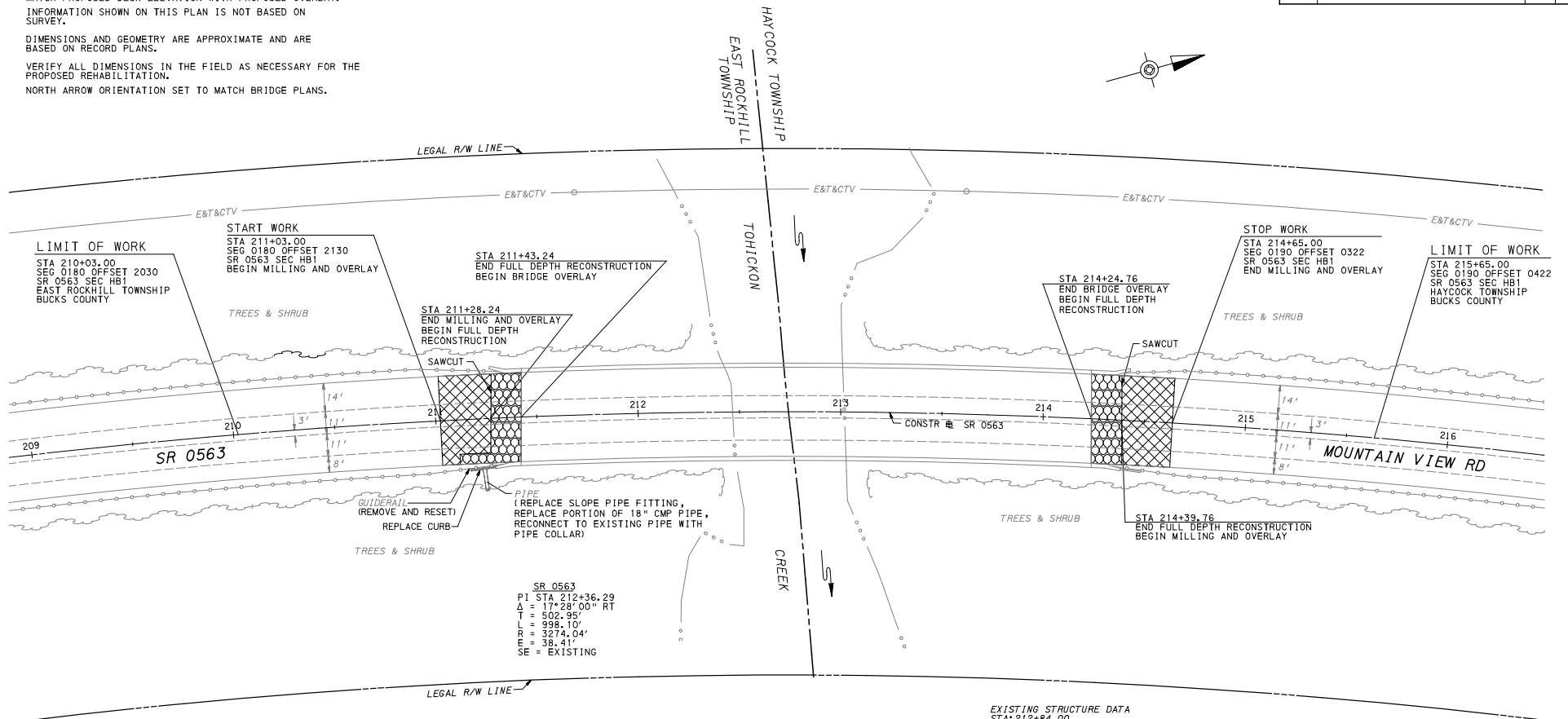




FILE NAME: p:\p\g\gnet\pw\ben\lev.com\gnet\pw-01\Documents\Projects\62315\_Group 1\OUTPUT\COMP\_02 - SR0563 Mountain View Road\Group X\Gannett Fleming\SR0563.rpt.dgn  
DATE: 12/26/2024

DISTRICT	COUNTY	ROUTE	SECTION	SHEET
6-0	BUCKS	0563	HB1	8 OF 13
EAST ROCKHILL AND HAYCOCK TOWNSHIPS				
REVISION NUMBER	REVISIONS	DATE	BY	

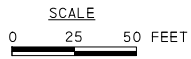
**NOTES:**  
MATCH PROPOSED DECK ELEVATION WITH PROPOSED OVERLAY.  
INFORMATION SHOWN ON THIS PLAN IS NOT BASED ON SURVEY.  
DIMENSIONS AND GEOMETRY ARE APPROXIMATE AND ARE BASED ON RECORD PLANS.  
VERIFY ALL DIMENSIONS IN THE FIELD AS NECESSARY FOR THE PROPOSED REHABILITATION.  
NORTH ARROW ORIENTATION SET TO MATCH BRIDGE PLANS.



**LEGEND**

- FULL DEPTH RECONSTRUCTION
- VARIABLE DEPTH MILLING 1-1/2" TO 1/4" AND OVERLAY 1-1/2" DEPTH (SEE PAVEMENT TRANSITION DETAIL)
- T — FRONTIER COMMUNICATIONS (AERIAL LINE)
- E — PPL ELECTRIC UTILITIES CORPORATION (AERIAL LINE)
- CTV — SERVICE ELECTRIC CABLE TV INC (AERIAL LINE)

ALL UTILITY INFORMATION HEREON IS DEPICTED TO QUALITY LEVEL "D" (QL-D) UNLESS OTHERWISE NOTED.



**EXISTING STRUCTURE DATA**  
STA: 212+84.00  
3-SPAN COMPOSITE PRESTRESSED CONCRETE I-BEAM  
SPAN 1 & 3: 92'-2 5/8"  
SPAN 2: 93'-0"  
CLEARANCE: 40'-10"  
SKEW: 85°55'40"  
CLEAR RDWY WIDTH: 44'-0"  
STRUCTURE #: S-9876

**PROPOSED STRUCTURE DATA**  
STA: 212+84.00  
3-SPAN COMPOSITE PRESTRESSED CONCRETE I-BEAM  
SPAN 1 & 3: 92'-2 5/8"  
SPAN 2: 93'-0"  
CLEARANCE: 40'-10"  
SKEW: 85°55'40"  
CLEAR RDWY WIDTH: 44'-0"  
STRUCTURE #: S-39636  
RECOMMENDED:

**SR 0563  
ROADWAY PLAN**

PREPARED BY:  
GANNETT FLEMING, INC.  
AUDUBON, PA

**PRELIMINARY  
NOT FOR  
CONSTRUCTION  
JUNE 2025**