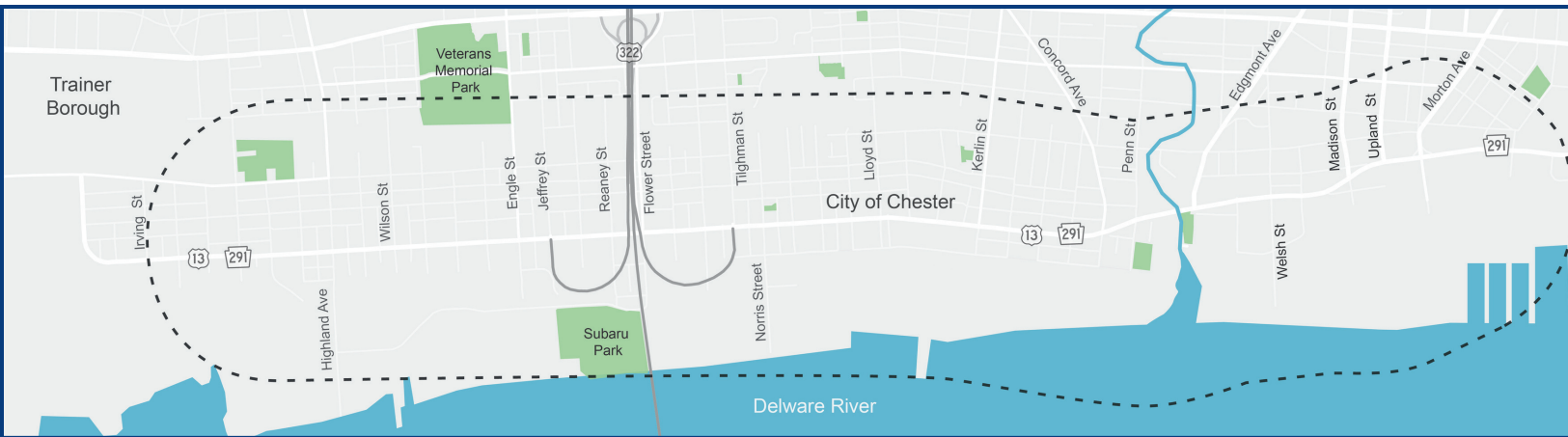


Route 291/U.S. 13 Complete Streets Safety Project

City of Chester and Trainer Borough, Delaware County



What is this project about?

PennDOT is planning a **Complete Streets project** to make Route 291/U.S. 13 safer and easier to use for everyone. The project covers **3.2 miles of the road**, from Ridley Creek to Irving Street in the City of Chester and Trainer Borough. This work builds on a **2024 Delaware County safety study** that suggested changes to make the roadway safer for all users.

Why is this project happening?

This project seeks to make the road safer and more comfortable for drivers, walkers, bike riders, and people who live along the corridor by:

- **Slowing down traffic** and reducing speeding and aggressive driving
- Making it easier and safer for people to **cross the street**
- **Adding a trail** for walking and biking

What is a Complete Street?

A Complete Street is designed so people of all ages and abilities can travel safely and comfortably. This includes:

- **People walking**
- **People riding bikes**
- **People driving**
- **People taking the bus**

Did you know?

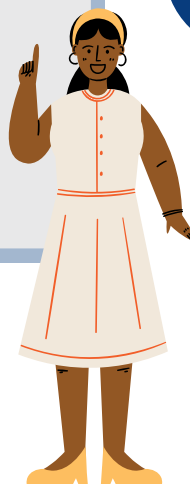
Route 291/U.S. 13 carries up to 14,000 vehicles per day, including many trucks.

Want to learn more?



SCAN THE QR CODE!

<https://bit.ly/route291US13cssp>



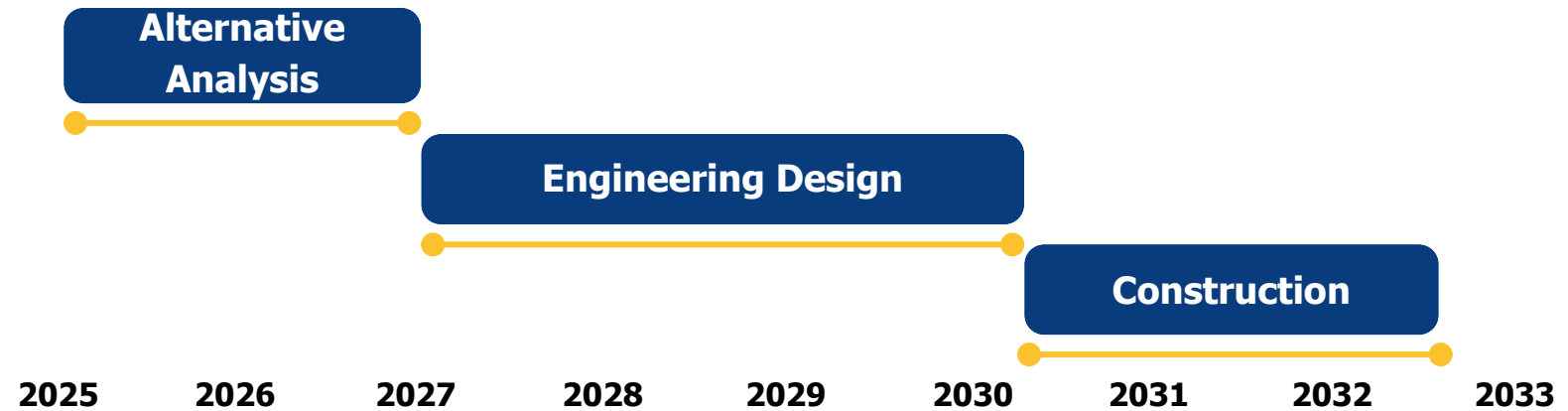
What is happening now?

The project team is currently **reviewing different improvement options** from the county's recent safety study, along with some new ideas. This review will help **decide which improvements should move forward into engineering design and later construction.**

How can you get involved?

PennDOT wants to hear from the community. **Public meetings** will be held so residents, community members, business owners, and interested citizens can learn more about the project and share their ideas. More details will be coming this **fall.**

Project Schedule (Subject to change)



Funding

The Route 291/U.S. 13 Complete Streets project is financed with **state and federal funds.**

Early Safety Improvements

Before this larger project began, PennDOT completed an **early-action safety improvement project on Route 291/U.S. 13** in 2024. The **\$434,000** project included:

- **Larger 35 mph speed limit** signs to increase driver awareness of the posted speed limit.
- **New pavement markings and high visibility crosswalks** to emphasize speed limits and pedestrian crossing areas.
- **Dark pavement markings** on concrete to improve their visibility.
- **"X" boxes at intersections** to stop illegal parking and improve driver visibility when entering Route 291/U.S. 13.
- **Dotted lines** to help drivers safely enter the roadway at unsignalized intersections.
- **Flexible posts on medians** to make them easier to see.

