

NEWARK ROAD AND BALTIMORE PIKE INTERSECTION IMPROVEMENT PROJECT

Presenters:

Josefina Brown, Highway Design Manager, PennDOT

Stephen C. Giampaolo, PE, Regional Design Service Lead, Bowman

Catherine Dress, Environmental Project Manager, NTM

December 4, 2025

CAPTIONS/Q&A

The image shows a Microsoft Teams interface with several panels and settings. At the top, there are icons for Captions (a speech bubble with a checkmark) and Q&A (a speech bubble with a question mark), both circled in red. To their right is a 'More' menu icon (three dots) and a red 'Leave' button. Below these icons, a 'Captions' panel is open, showing a 'CC' icon, a 'Caption language' dropdown, and a 'Spoken language: English (US)' dropdown. The 'Caption language' dropdown is open, showing options for 'English (US)' and 'Spanish'. The 'Spoken language: English (US)' dropdown is also open, showing options for 'English (US)' and 'Spanish'. A red arrow points from the 'Captions' icon in the top bar to the 'Captions' icon in the panel. A blue arrow points from the 'Q&A' icon in the top bar to the 'Ask a question' button in the Q&A panel. The Q&A panel is open, showing a 'Q&A' title, a close button (X), and two informational messages: 'The organizer has disabled new discussions.' and 'The organizer has disabled responses to posts.' Below these messages is an 'Ask a question' button with a yellow 'AU' icon. At the bottom of the Q&A panel, there are tabs for 'All', 'My posts', and 'Archived'. The 'All' tab is selected. Below the tabs is a large speech bubble icon and the text 'No posts published yet'. At the bottom left of the image, there is a small number '2'.

Captions

- CC Hide live captions
- Caption language
- Spoken language: English (US)
- Spoken language: English (US)
- Spanish

Q&A

- The organizer has disabled new discussions.
- The organizer has disabled responses to posts.
- Ask a question
- All My posts Archived
- No posts published yet



MEETING AGENDA

Introduction

Purpose and Need

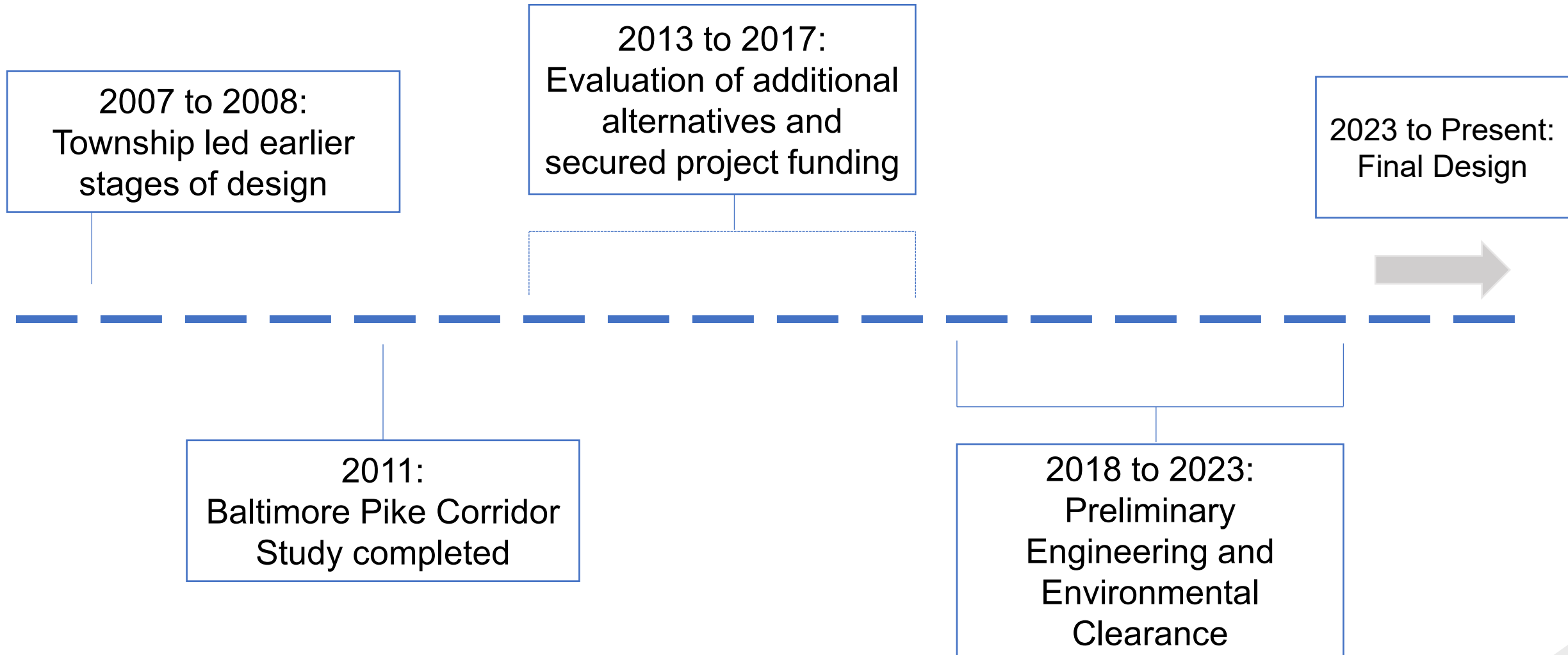
Design Improvements

Traffic Control During Construction

Project Timeline

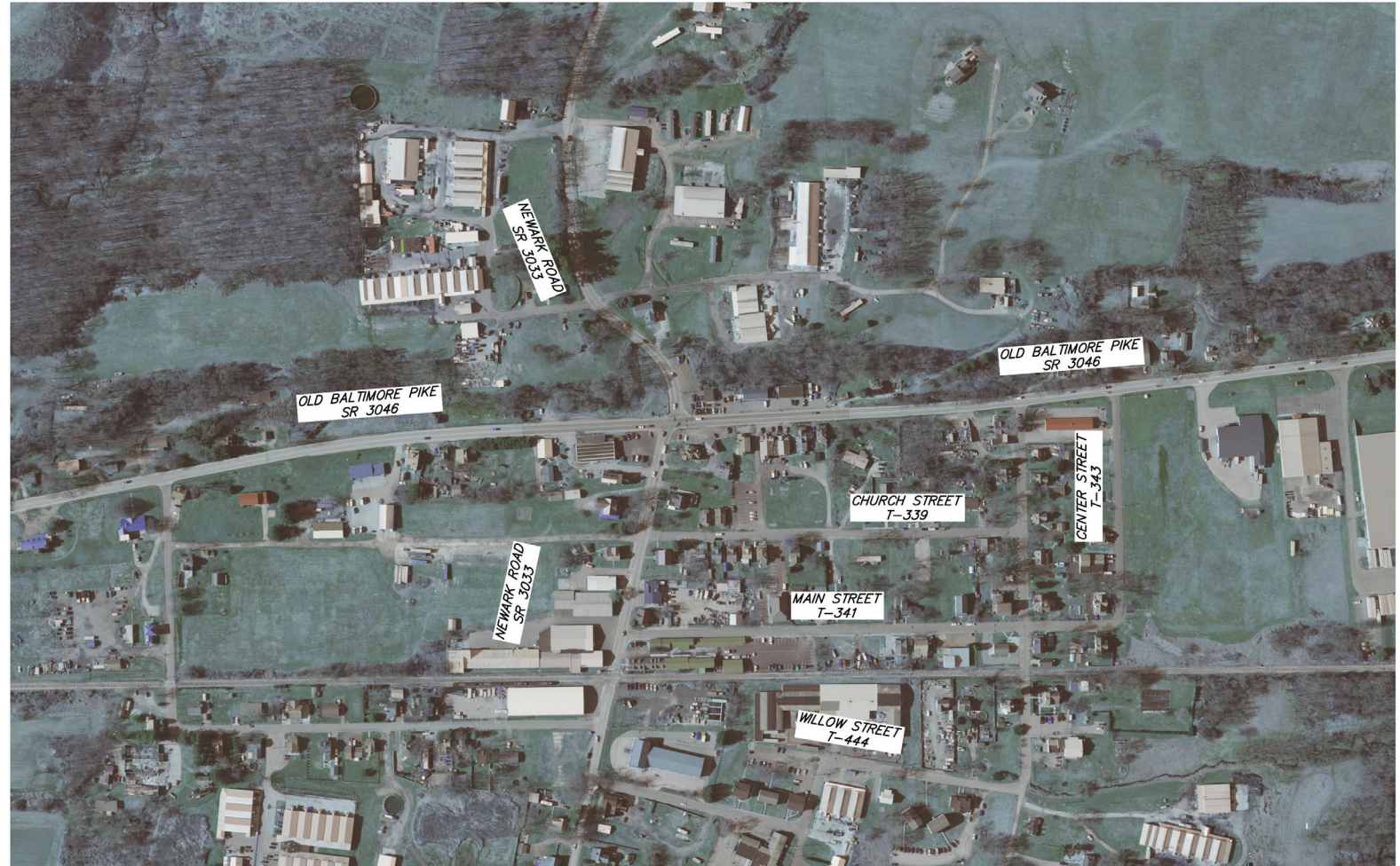


INTRODUCTION



PURPOSE AND NEED

- Existing alignment and geometric deficiencies
- Recurring congestion
- Incomplete pedestrian accommodations
- Unmanaged highway stormwater runoff



DESIGN IMPROVEMENTS

Traffic Operations – Existing Conditions

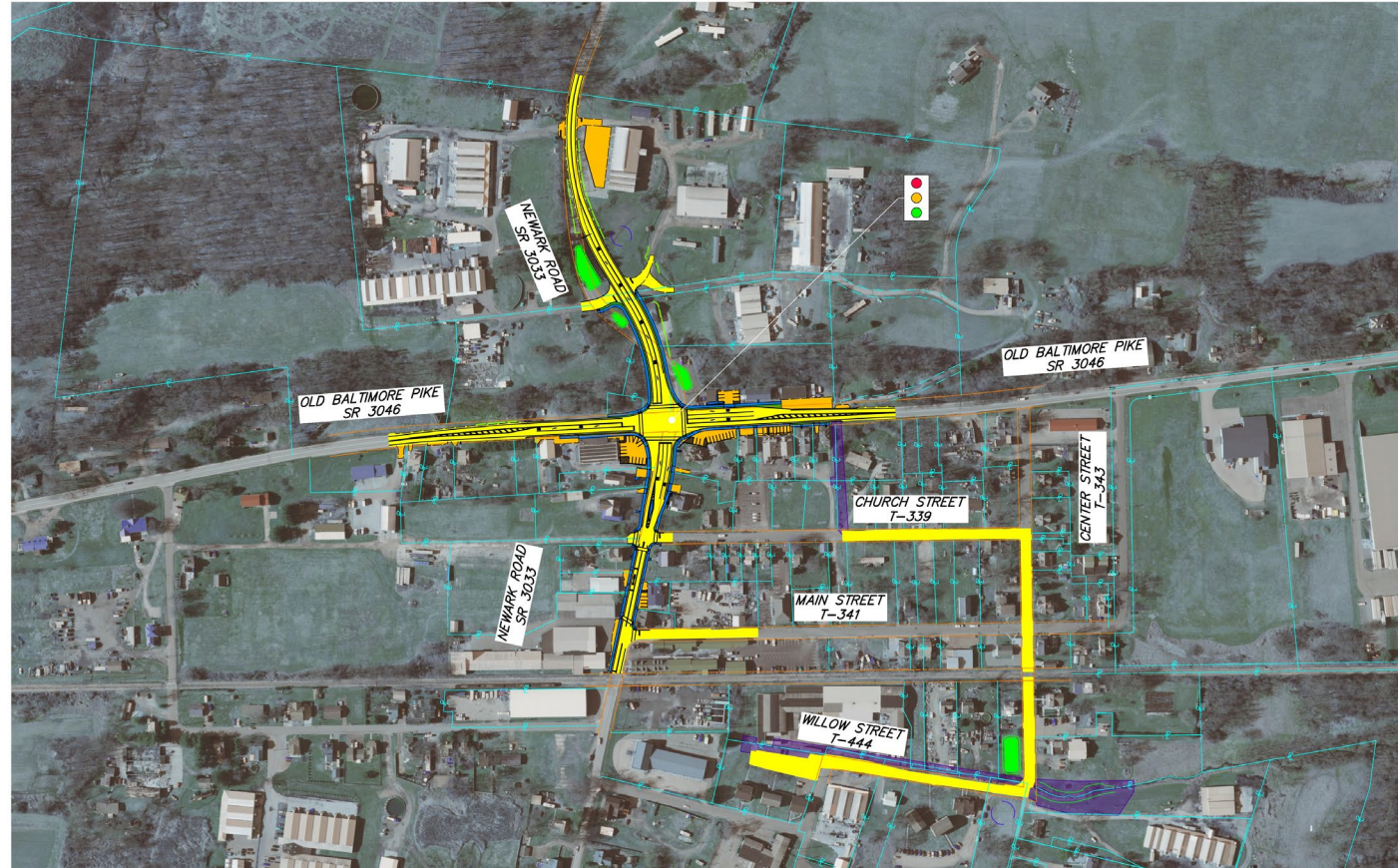
- Overall Intersection Delay:
 - Overall intersection delay of 1 minute
 - 2 minutes of delay (PM) for WB Baltimore Pike
- Traffic Backups:
 - 1000 feet plus (PM) for WB Baltimore Pike
 - 300 feet (AM/PM) for SB Newark Road
 - 400 feet plus (AM) for EB Baltimore Pike



DESIGN IMPROVEMENTS

Traffic Operations – Proposed Conditions

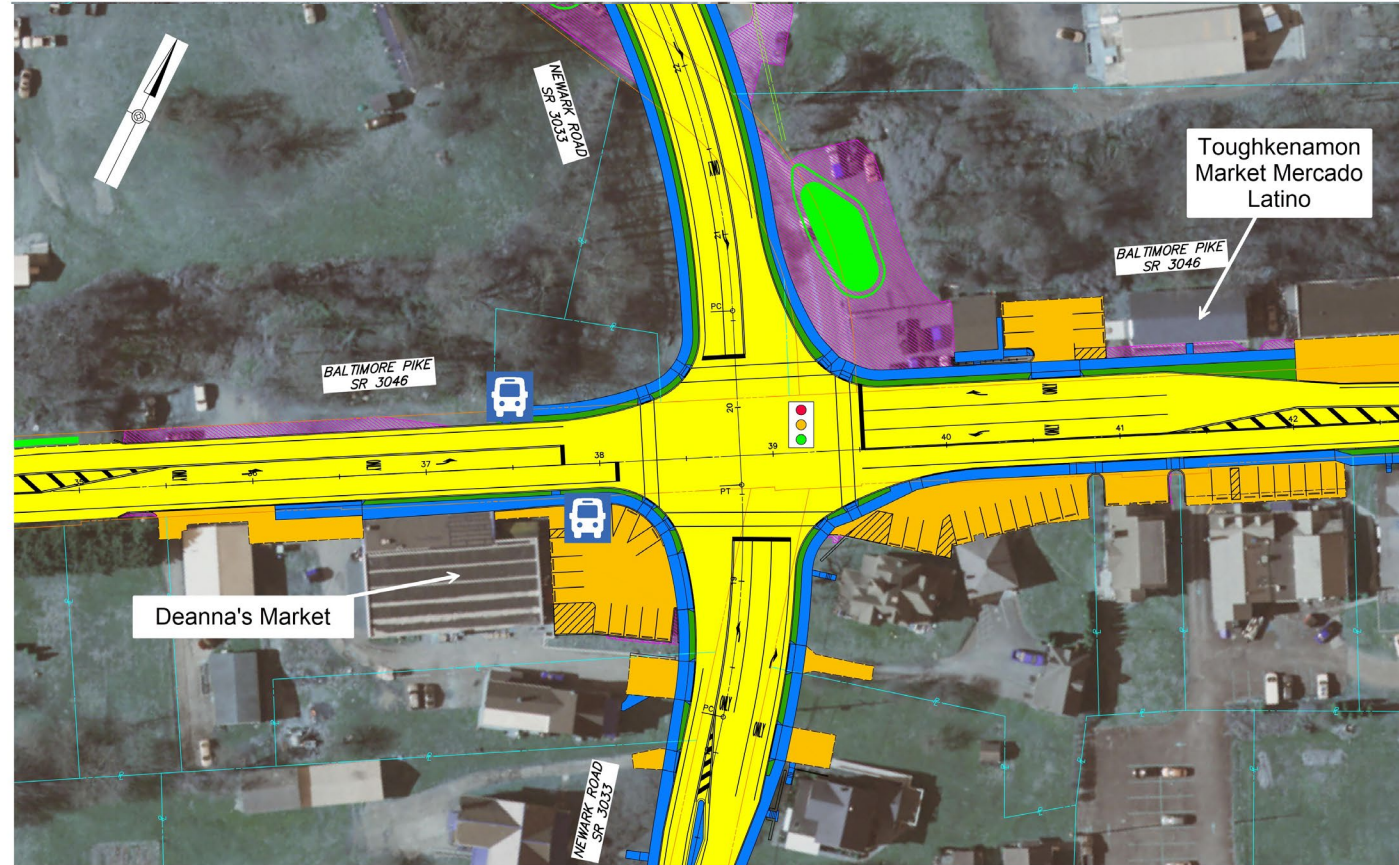
- Additional Lane Capacity
 - Northern leg of Newark Road:
 - 500-foot left-turn lane
 - Southern leg of Newark Road:
 - 100-foot left-turn lane and 150-foot right-turn lane
 - Western leg of Baltimore Pike:
 - 225-foot left-turn lane
 - Eastern leg of Baltimore Pike:
 - 175-foot left-turn lane and 250-foot right-turn lane



DESIGN IMPROVEMENTS

Traffic Operations – Proposed Conditions

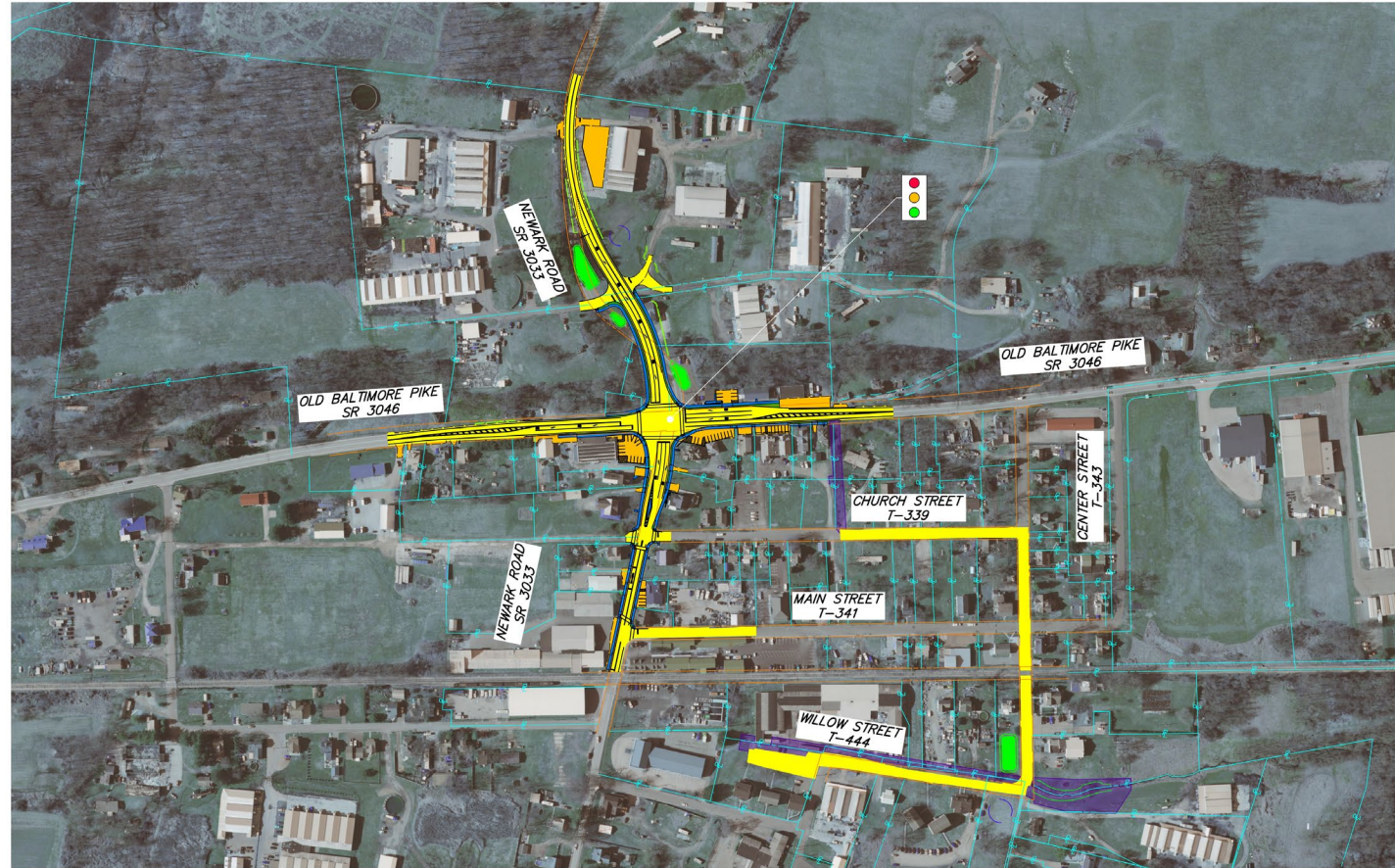
- Additional Lane Capacity
 - Northern leg of Newark Road:
 - 500-foot left-turn lane
 - Southern leg of Newark Road:
 - 100-foot left-turn lane and 150-foot right-turn lane
 - Western leg of Baltimore Pike:
 - 225-foot left-turn lane
 - Eastern leg of Baltimore Pike:
 - 175-foot left-turn lane and 250-foot right-turn lane



DESIGN IMPROVEMENTS

Traffic Operations – Proposed Conditions

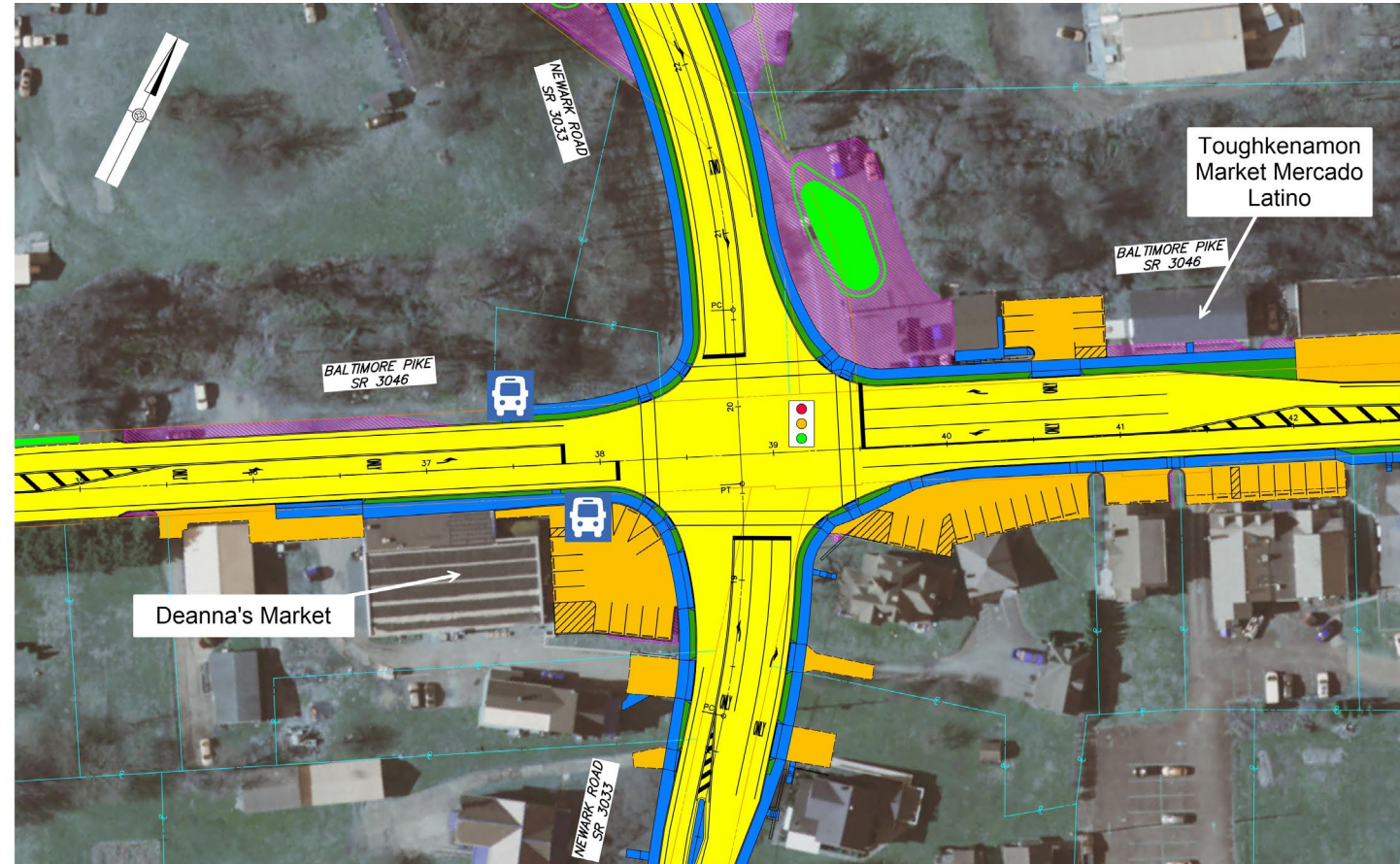
- No Build Conditions:
 - Increase in delay and traffic backups
- Overall Intersection Delay:
 - Overall intersection delay of 24-28 seconds
- Traffic Backups:
 - 240 feet (PM) for WB Baltimore Pike
 - 300 feet (AM/PM) for SB Newark Road
 - 400 feet (AM/PM) for EB Baltimore Pike



DESIGN IMPROVEMENTS

Traffic Operations – Proposed Conditions

- No Build Conditions:
 - Increase in delay and traffic backups
- Overall Intersection Delay
 - Overall intersection delay of 24-28 seconds
- Traffic Backups:
 - 240 feet (PM) for WB Baltimore Pike
 - 300 feet (AM/PM) for SB Newark Road
 - 400 feet (AM/PM) for EB Baltimore Pike



DESIGN IMPROVEMENTS

Intersection Realignment: Northern leg of Newark Road (S.R. 3033)

- Shift the intersection
- Flatten the reverse-curve along Northern Leg
- Desirable alignment with the Southern Leg of Newark Road (S.R. 3033)
- Improved turning radii



DESIGN IMPROVEMENTS

Intersection Realignment: Northern leg of Newark Road (S.R. 3033)

- Shift the intersection
- Flatten the reverse-curve along Northern Leg
- Desirable alignment with the Southern Leg of Newark Road (S.R. 3033)
- Improved turning radii



DESIGN IMPROVEMENTS

Intersection Realignment: Northern leg of Newark Road (S.R. 3033)

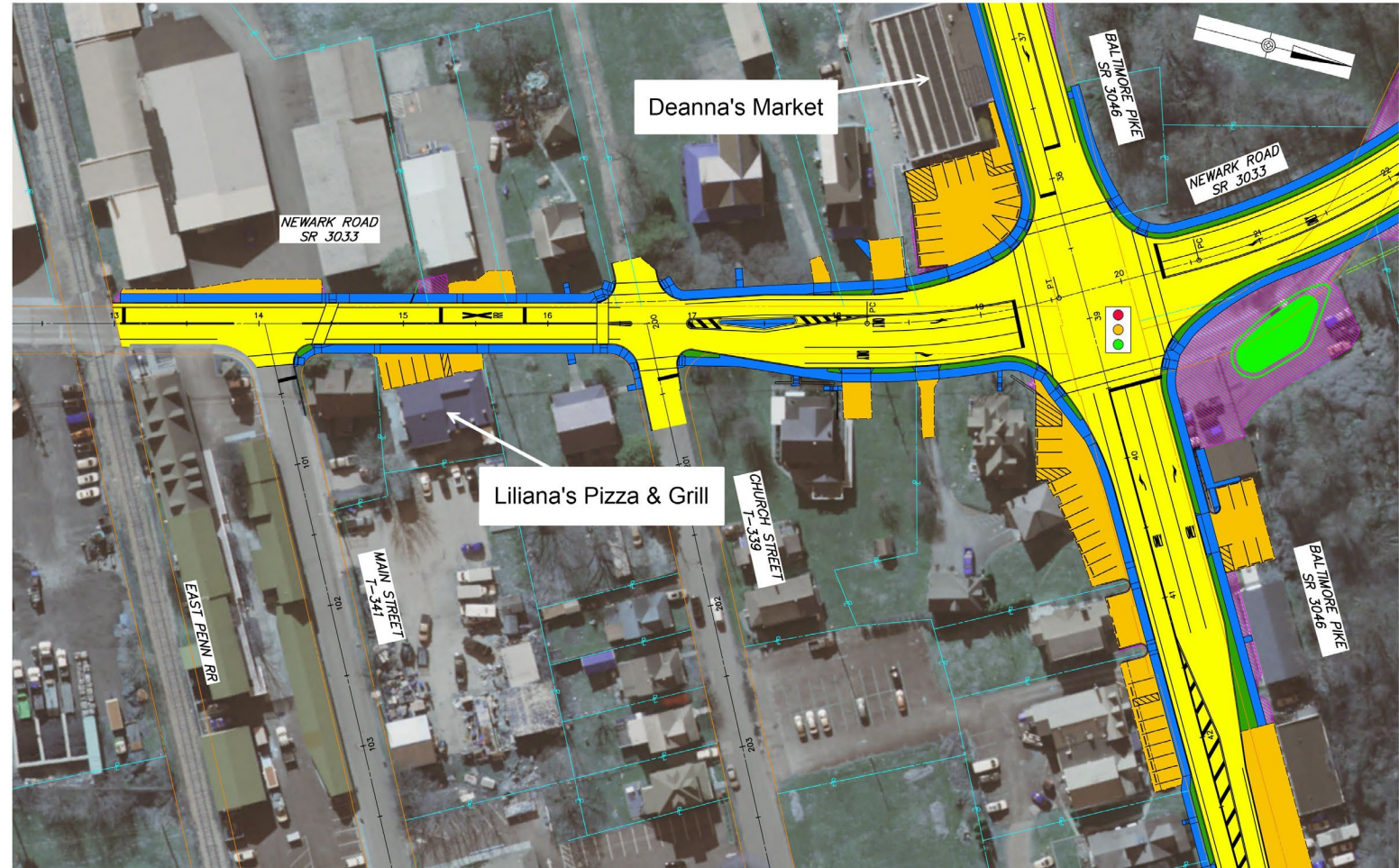
- Shift the intersection
- Flatten the reverse-curve along Northern Leg
- Desirable alignment with the Southern Leg of Newark Road (S.R. 3033)
- Improved turning radii



DESIGN IMPROVEMENTS

Intersection Realignment: Northern leg of Newark Road (S.R. 3033)

- Shift the intersection
- Flatten the reverse-curve along Northern Leg
- Desirable alignment with the Southern Leg of Newark Road (S.R. 3033)
- Improved turning radii



DESIGN IMPROVEMENTS

Other Roadway and Intersection Improvements

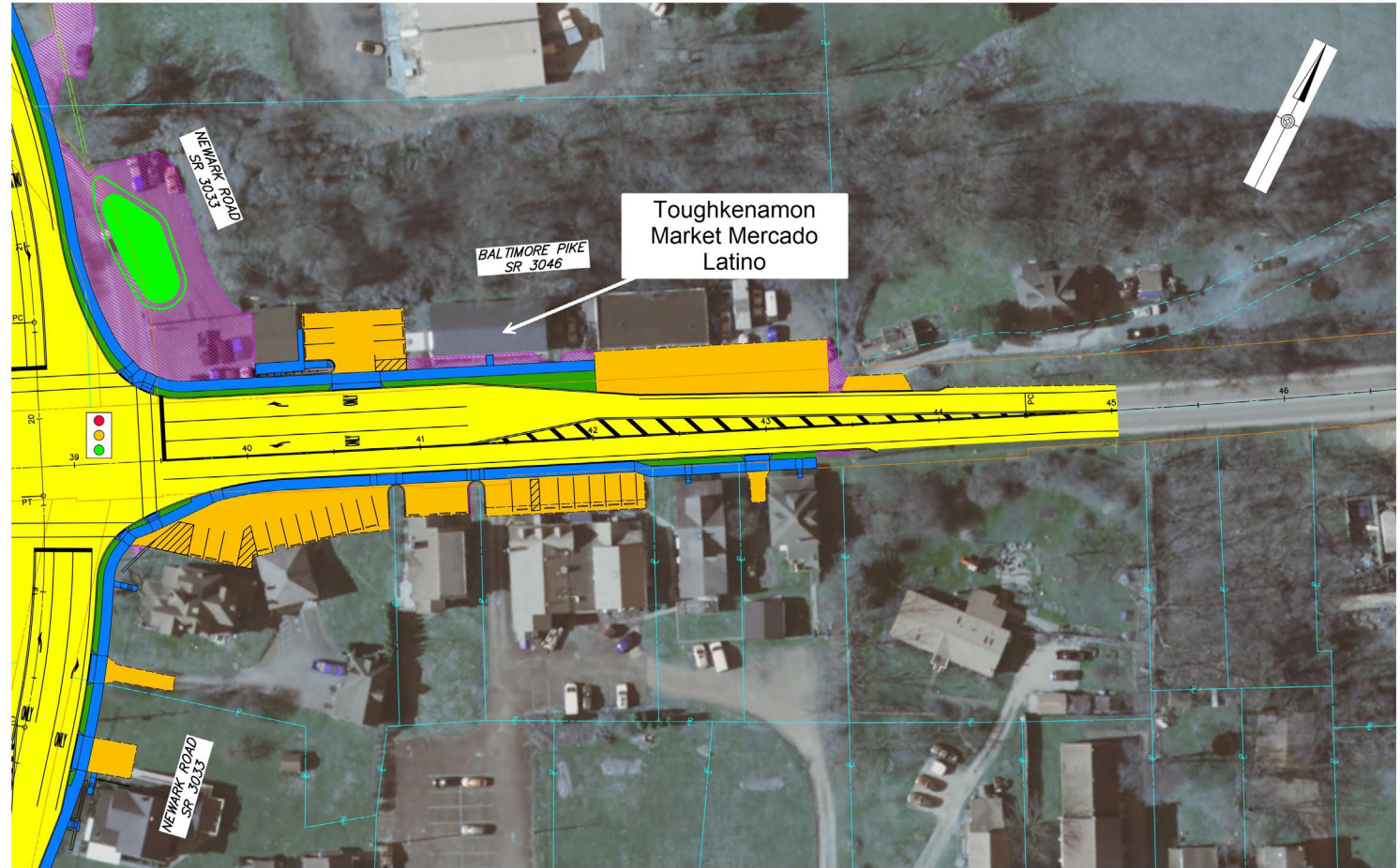
- Pedestrian Facilities – ADA compliant curb ramps and sidewalks along the east, west and south legs of the intersection
- Upgraded Traffic Signal at the Intersection
- Pedestrian-scale streetlights within the limits of the project



DESIGN IMPROVEMENTS

Other Roadway and Intersection Improvements

- Pedestrian Facilities – ADA compliant curb ramps and sidewalks along the east, west and south legs of the intersection
- Upgraded Traffic Signal at the Intersection
- Pedestrian-scale streetlights within the limits of the project



DESIGN IMPROVEMENTS

Other Roadway and Intersection Improvements

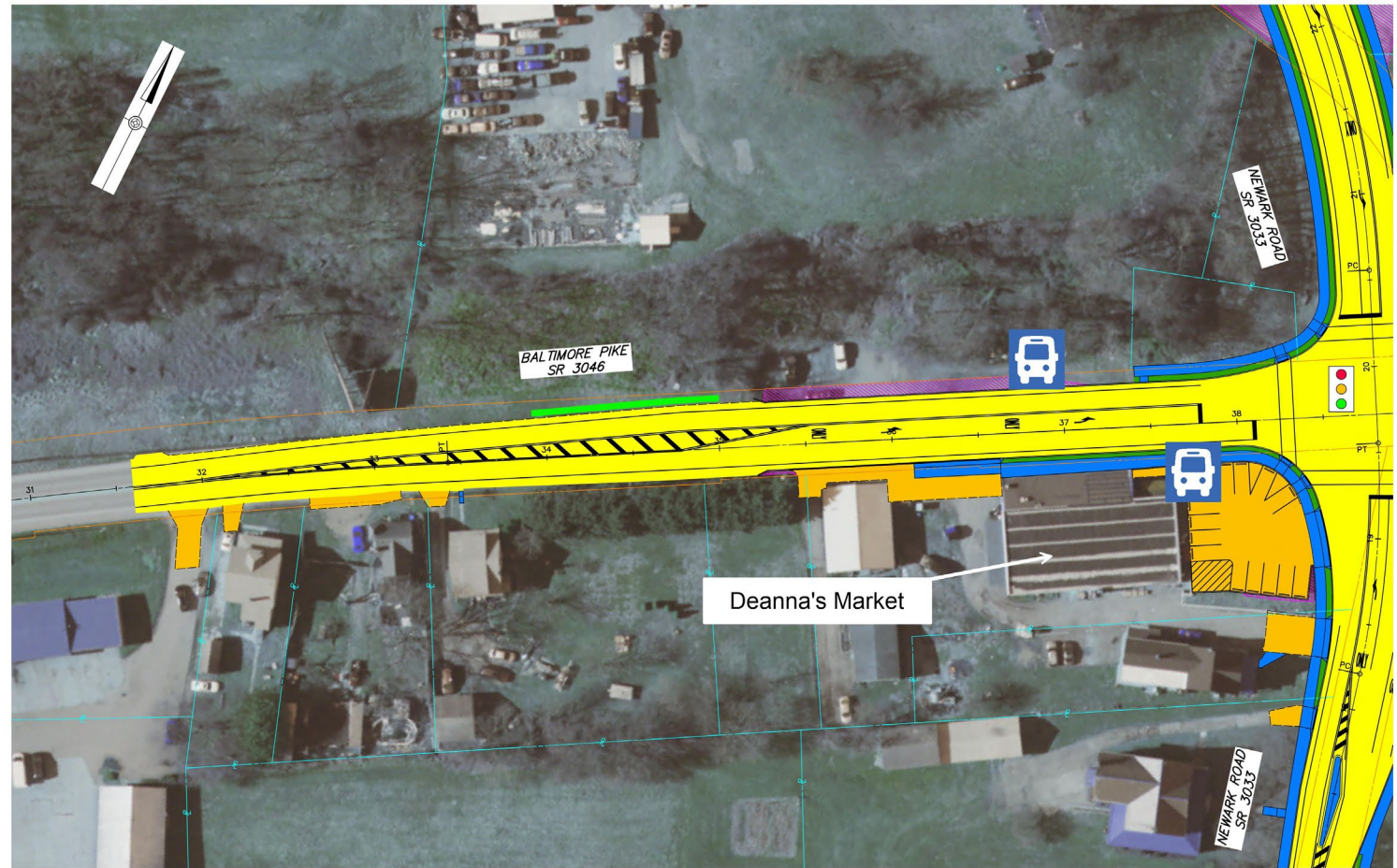
- Pedestrian Facilities – ADA compliant curb ramps and sidewalks along the east, west and south legs of the intersection
- Upgraded Traffic Signal at the Intersection
- Pedestrian-scale streetlights within the limits of the project



DESIGN IMPROVEMENTS

Other Roadway and Intersection Improvements

- Pedestrian Facilities – ADA compliant curb ramps and sidewalks along the east, west and south legs of the intersection
- Upgraded Traffic Signal at the Intersection
- Pedestrian-scale streetlights within the limits of the project



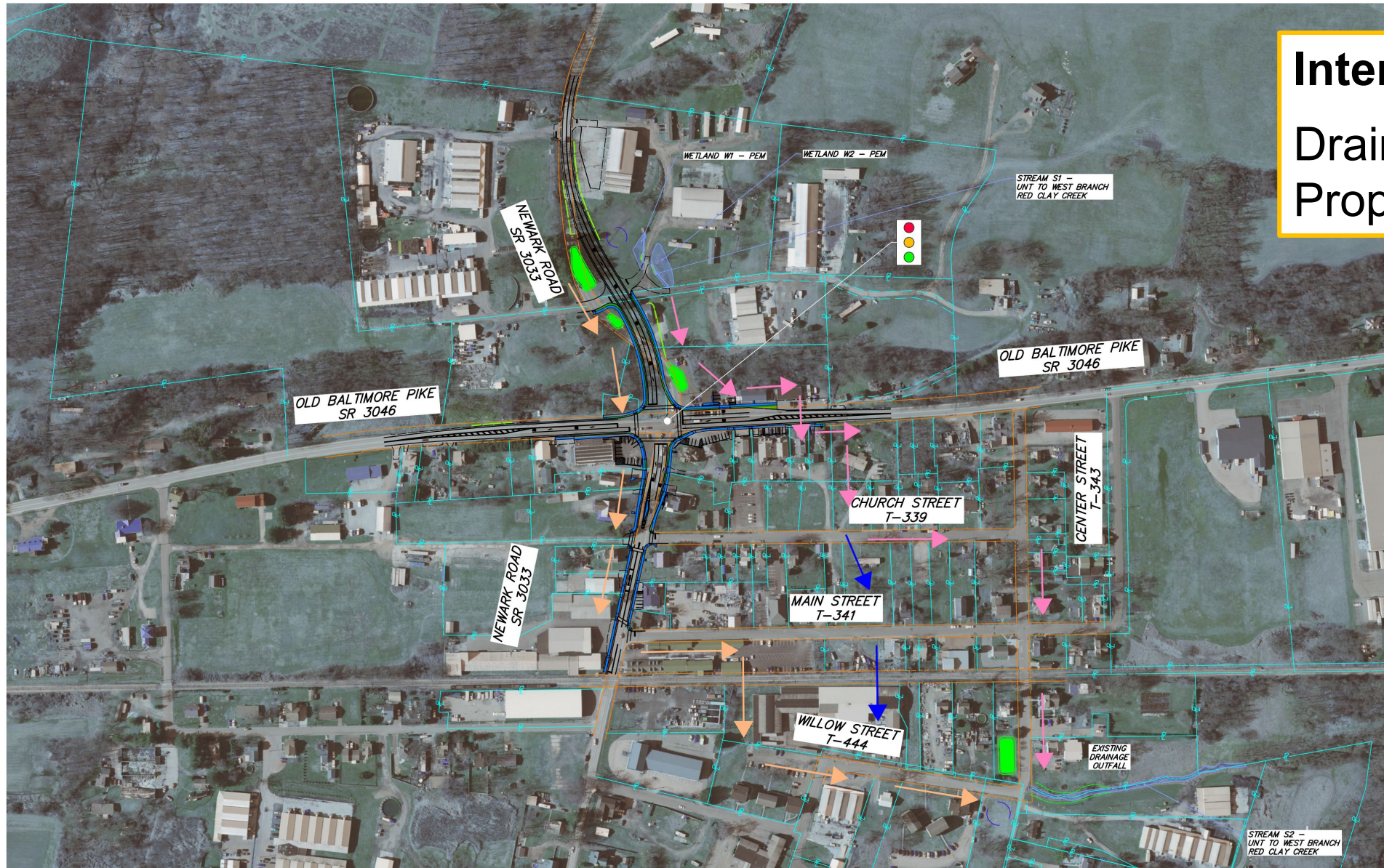
DESIGN IMPROVEMENTS

Intersection Drainage
Drainage Conveyance
Existing Condition:



DESIGN IMPROVEMENTS

Intersection Drainage
Drainage Conveyance
Proposed Condition:



DESIGN IMPROVEMENTS

Drainage Network and Stormwater Management Improvements

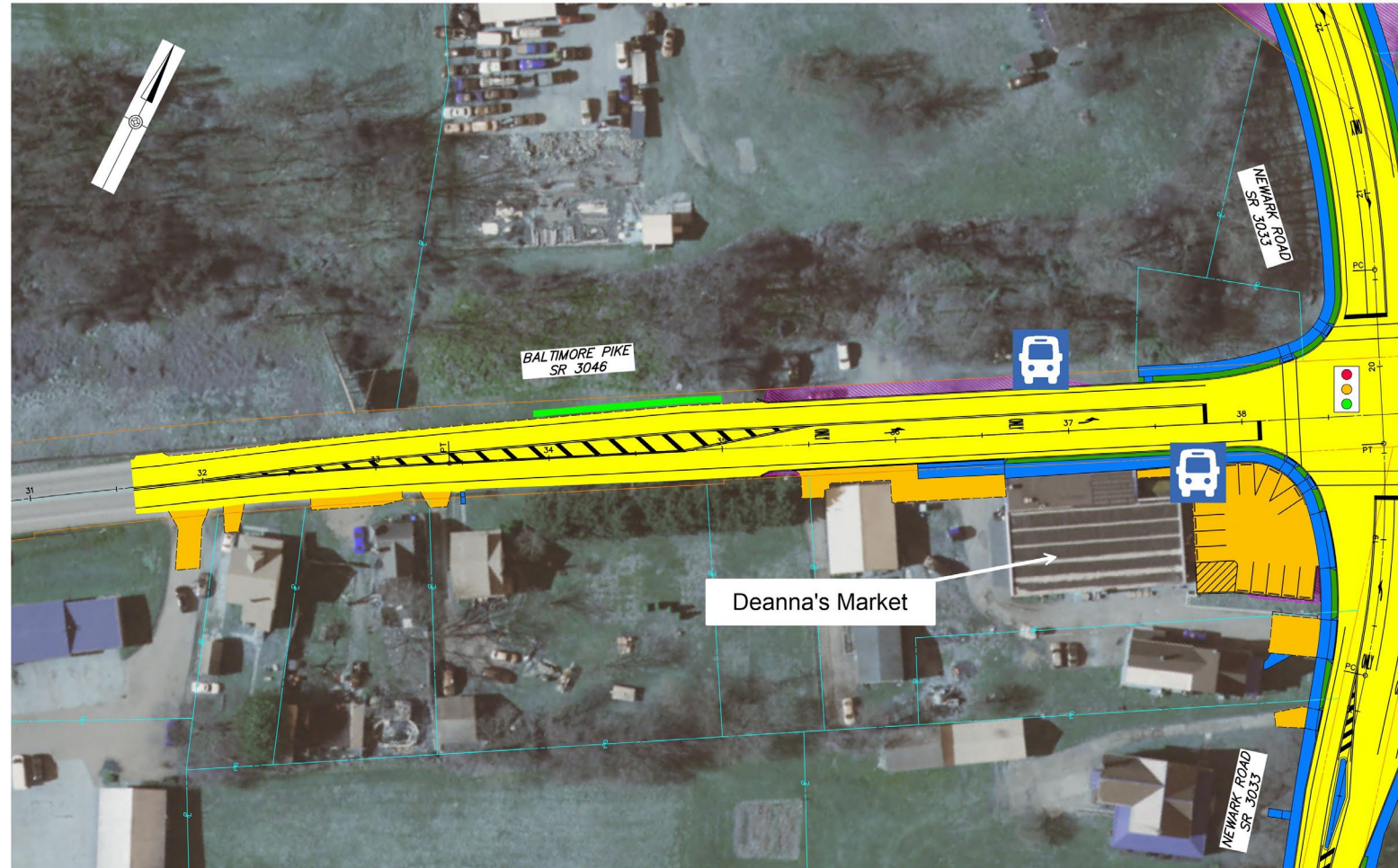
- Upgraded roadway inlets and storm pipe network
- Four (4) Stormwater Basins
- Four (4) Vegetated Swales
- One (1) Infiltration Trench
- Upgrades to the downstream storm pipe network within the Village of Toughkenamon along Main Street, Church Street, Center Street and Willow Street



DESIGN IMPROVEMENTS

Drainage Network and Stormwater Management Improvements

- Upgraded roadway inlets and storm pipe network
- Four (4) Stormwater Basins
- Four (4) Vegetated Swales
- One (1) Infiltration Trench
- Upgrades to the downstream storm pipe network within the Village of Toughkenamon along Main Street, Church Street, Center Street and Willow Street



DESIGN IMPROVEMENTS

Drainage Network and Stormwater Management Improvements

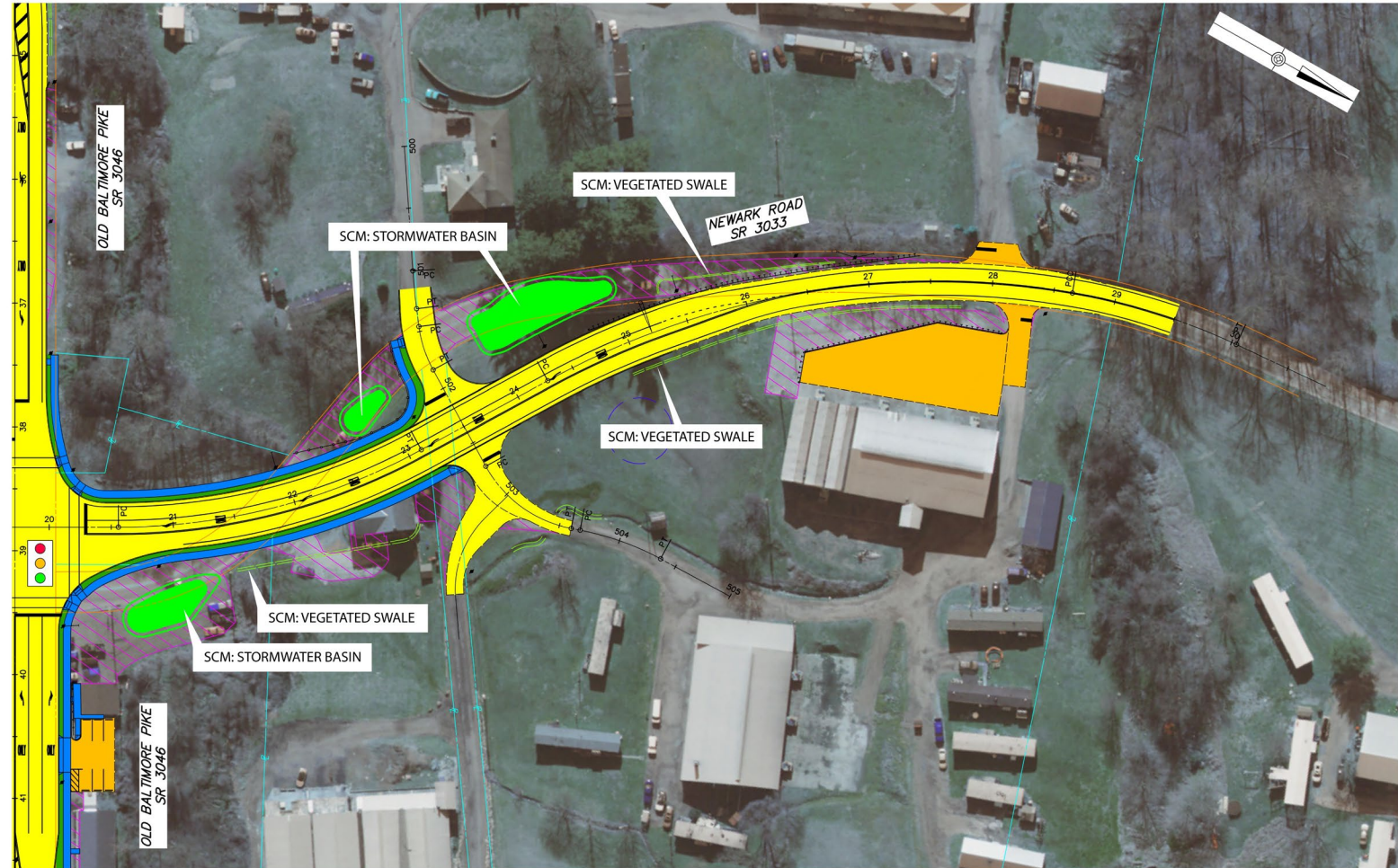
- Upgraded roadway inlets and storm pipe network
- Four (4) Stormwater Basins
- Four (4) Vegetated Swales
- One (1) Infiltration Trench
- Upgrades to the downstream storm pipe network within the Village of Toughkenamon along Main Street, Church Street, Center Street and Willow Street



DESIGN IMPROVEMENTS

Drainage Network and Stormwater Management Improvements

- Upgraded roadway inlets and storm pipe network
- Four (4) Stormwater Basins
- Four (4) Vegetated Swales
- One (1) Infiltration Trench
- Upgrades to the downstream storm pipe network within the Village of Toughkenamon along Main Street, Church Street, Center Street and Willow Street



DESIGN IMPROVEMENTS

Drainage Network and Stormwater Management Improvements

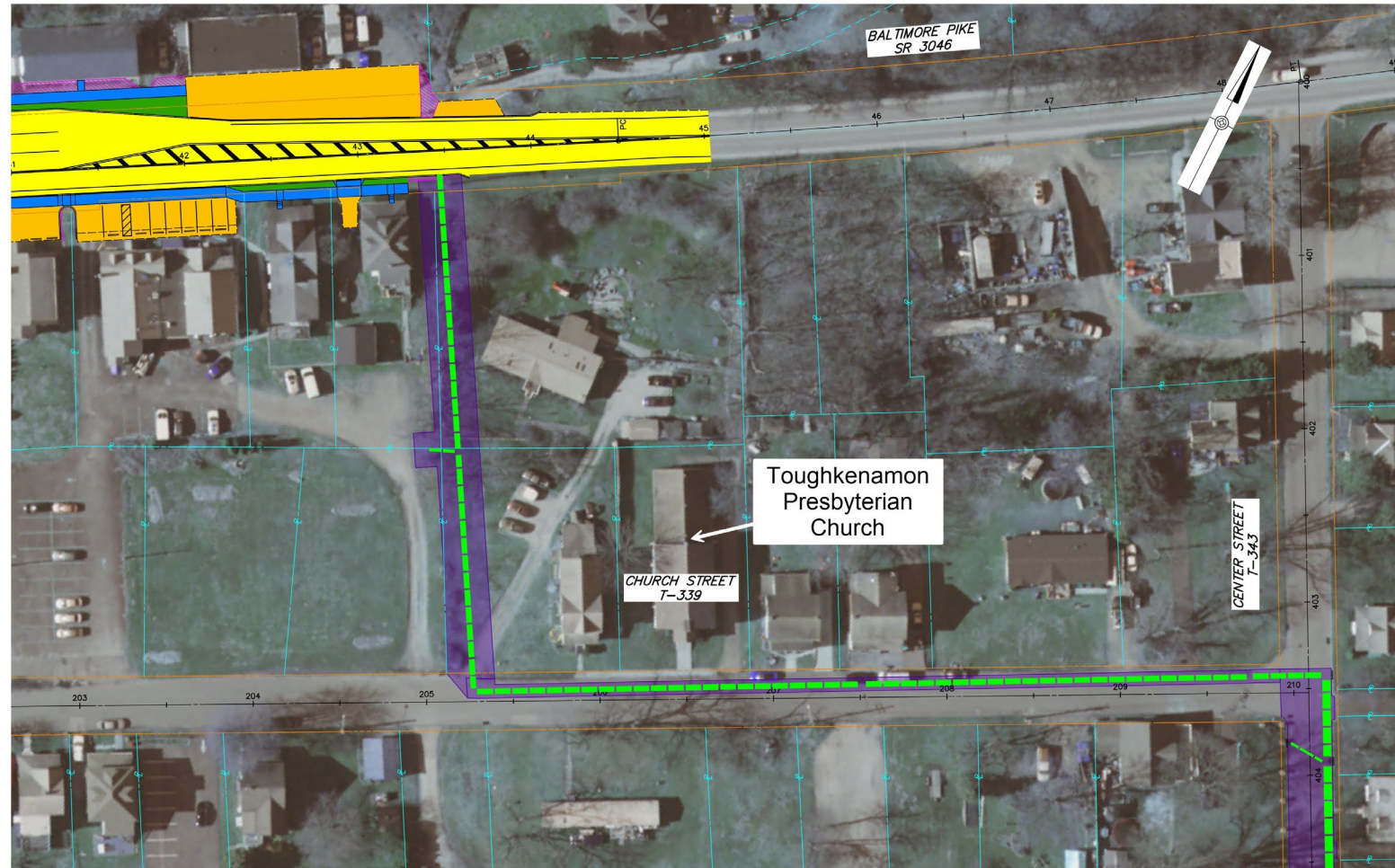
- Upgraded roadway inlets and storm pipe network
- Four (4) Stormwater Basins
- Four (4) Vegetated Swales
- One (1) Infiltration Trench
- Upgrades to the downstream storm pipe network within the Village of Toughkenamon along Main Street, Church Street, Center Street and Willow Street



DESIGN IMPROVEMENTS

Drainage Network and Stormwater Management Improvements

- Upgraded roadway inlets and storm pipe network
- Four (4) Stormwater Basins
- Four (4) Vegetated Swales
- One (1) Infiltration Trench
- Upgrades to the downstream storm pipe network within the Village of Toughkenamon along Main Street, Church Street, Center Street and Willow Street



DESIGN IMPROVEMENTS

Drainage Network and Stormwater Management Improvements

- Upgraded roadway inlets and storm pipe network
- Four (4) Stormwater Basins
- Four (4) Vegetated Swales
- One (1) Infiltration Trench
- Upgrades to the downstream storm pipe network within the Village of Toughkenamon along Main Street, Church Street, Center Street and Willow Street



DESIGN IMPROVEMENTS

Drainage Network and Stormwater Management Improvements

- Upgraded roadway inlets and storm pipe network
- Four (4) Stormwater Basins
- Four (4) Vegetated Swales
- One (1) Infiltration Trench
- Upgrades to the downstream storm pipe network within the Village of Toughkenamon along Main Street, Church Street, Center Street and Willow Street



DESIGN IMPROVEMENTS

Drainage Network and Stormwater Management Improvements

- Upgraded roadway inlets and storm pipe network
- Four (4) Stormwater Basins
- Four (4) Vegetated Swales
- One (1) Infiltration Trench
- Upgrades to the downstream storm pipe network within the Village of Toughkenamon along Main Street, Church Street, Center Street and Willow Street



DESIGN IMPROVEMENTS

Drainage Network and Stormwater Management Improvements

- Upgraded roadway inlets and storm pipe network
- Four (4) Stormwater Basins
- Four (4) Vegetated Swales
- One (1) Infiltration Trench
- Upgrades to the downstream storm pipe network within the Village of Toughkenamon along Main Street, Church Street, Center Street and Willow Street



DESIGN IMPROVEMENTS

Permitting

- Joint Permit (PADEP/USACE) for impacts to upstream wetland and drainage outfall to an Unnamed Tributary to the Red Clay Creek
- National Pollution Discharge Elimination System (NPDES) Permit for stormwater discharges
- Erosion and Sediment Pollution Control adequacy from the Chester County Conservation District



DESIGN IMPROVEMENTS

Utilities

- Relocation of utility poles and overhead facilities
- Relocation of underground facilities (water, gas, electric/communication and sewer)
- Proposed storm sewer crossing with the East Penn Railway crossing at Center Street



TRAFFIC CONTROL DURING CONSTRUCTION

Construction Staging Agenda

Stage 1:

- Utility relocations
- Drainage installation along Church Street, Center Street, Main Street and Willow Street
- Southern Leg of Newark Road
- Stage 1 Detour for a section of Newark Road

Stage 2:

- Stage 2A – Left side of Baltimore Pike
- Stage 2B – Right side of Baltimore Pike

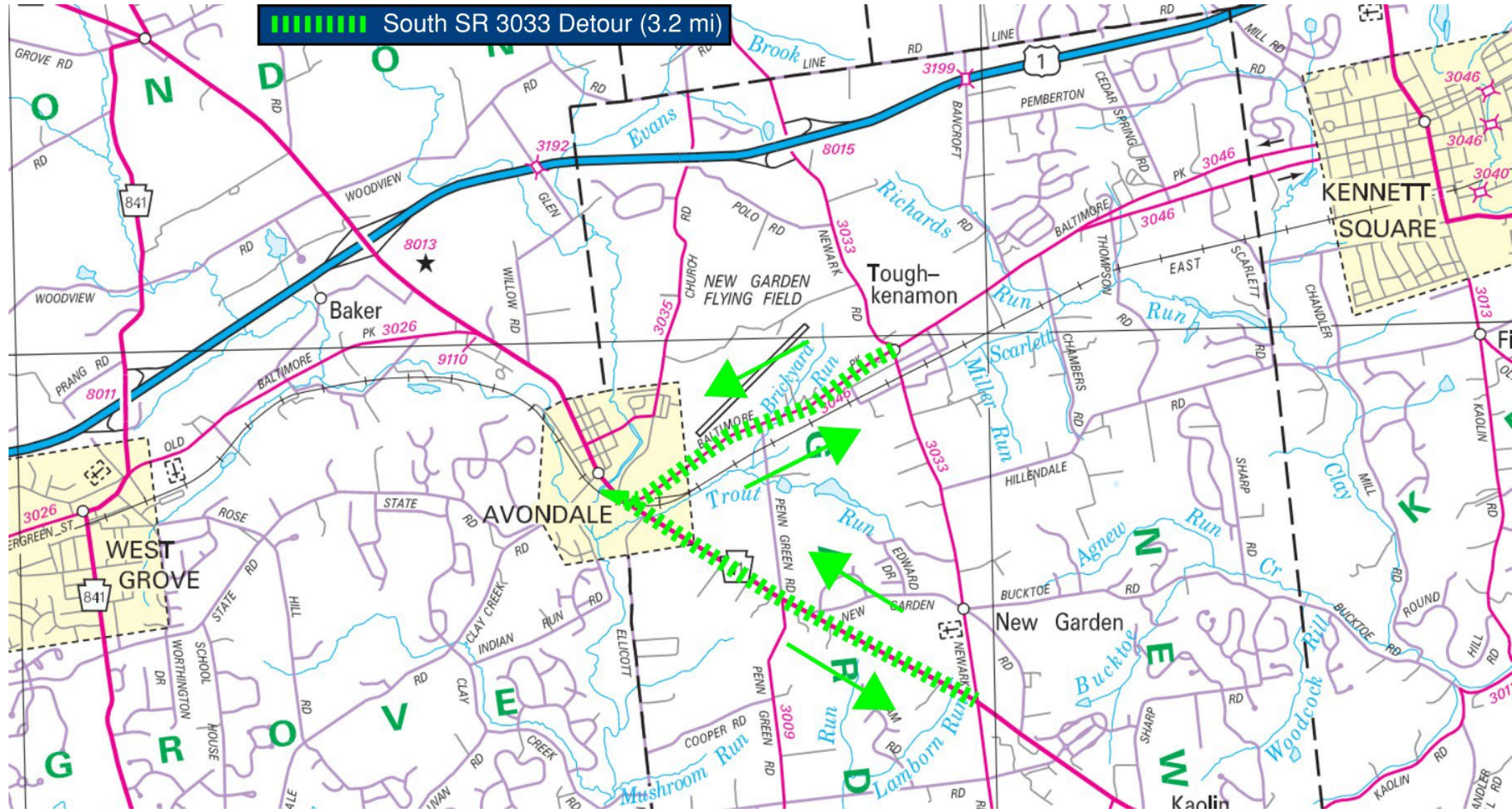
Stage 3:

- Northern Leg of Newark Road
- Stage 3 Long Term Detour



TRAFFIC CONTROL DURING CONSTRUCTION

STAGE 2A – Long-Term Detour



PROJECT TIMELINE

| | November 2025 | December 2025 | Q1 2026 | | | Q2 2026 | | | Q3 2026 | | | Q4 2026 | | | Q1 2027 | | | Q2 2027 | | | Q3 2027 | | | Q4 2027 | | | Q1 2028 | | | April 2028 | May 2028 |
|---------------------------------------|---------------|---------------|---------|--|--|---------|--|--|---------|--|--|---------|--|--|---------|--|--|---------|--|--|---------|--|--|---------|--|--|---------|--|--|------------|----------|
| Final Design | | | | | | | | | | | | | | | | | | | | | | | | | | | | | | | |
| Permitting | | | | | | | | | | | | | | | | | | | | | | | | | | | | | | | |
| Right-of-Way Process | | | | | | | | | | | | | | | | | | | | | | | | | | | | | | | |
| Utility Coordination and Clearances | | | | | | | | | | | | | | | | | | | | | | | | | | | | | | | |
| Preparation of Plans, Project Bidding | | | | | | | | | | | | | | | | | | | | | | | | | | | | | | | |
| Construction NTP | | | | | | | | | | | | | | | | | | | | | | | | | | | | | | | |



THANK YOU FOR PARTICIPATING!

FOR MORE INFORMATION, VISIT THE PENNDOT DISTRICT 6 WEBSITE
WWW.PENNDOT.PA.GOV/REGIONALOFFICES/DISTRICT-6

PROJECT WEBSITE:
BIT.LY/NEWARK-BALTIMORE