

CREAMERY ROAD OVER TOHICKON CREEK BRIDGE

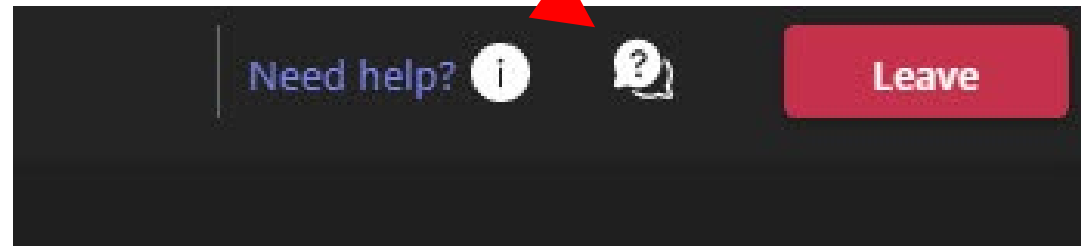
Bedminster Township and
Tinicum Township
Bucks County



RYAN WHITTINGTON, P.E. MAY 28, 2024

QUESTIONS?

Questions can be submitted by clicking on the Q&A feature located at the top of your screen



Please note the slide number in your question

PROJECT TEAM



Ryan Whittington – PennDOT Project Manager



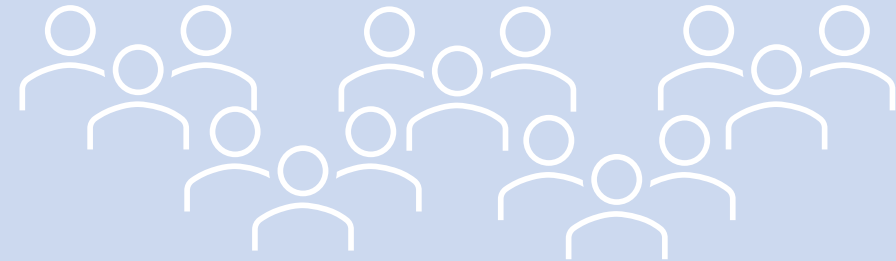
Jason Besz – Design Team Project Manager

Presenter

- Michael Krakosky – *Lead Highway Engineer*
- Barbara Idhaw – *Lead Structural Engineer*
- Xavier Riva – *Environmental and Cultural Resources*



MEETING AGENDA

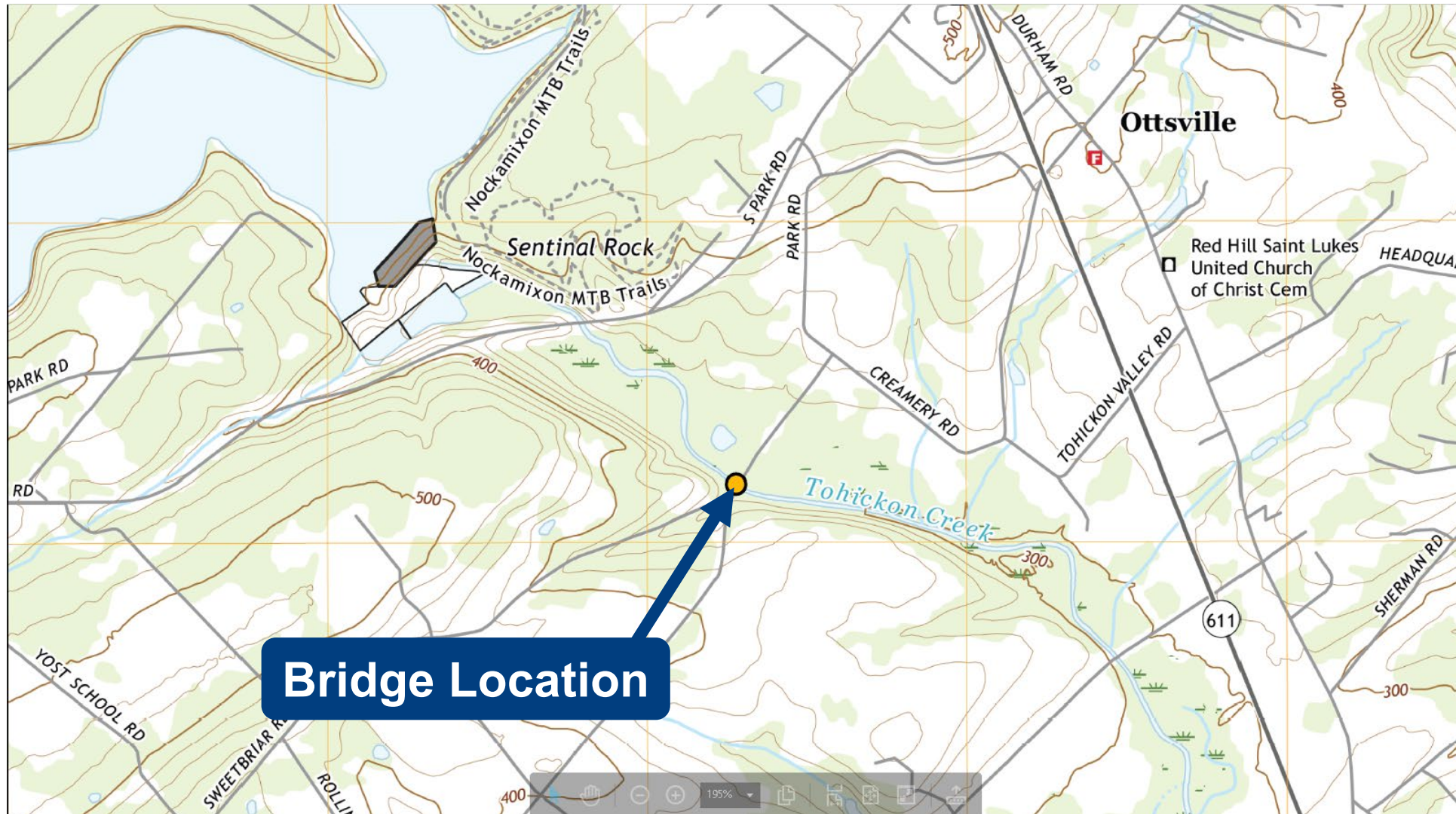


**Presentation is being
RECORDED
and will be posted to the
PROJECT WEBSITE**

- Project Location
- Project Update
- Site Constraints and Resources
- Project Purpose and Needs Area of Potential Effect
- Detour Route (To Be Determined)
- Next Steps and Timing
- Q&A (via TEAM chat)



PROJECT LOCATION



PROJECT UPDATE

- Recent and ongoing activities:
 - Survey updates
 - Environmental studies (wetlands, habitat, archeology)
 - Preliminary Line and Grade/Bridge width evaluation complete
 - Field meeting with local farm owner
 - Completed PennDOT Connects coordination



GENERAL DESCRIPTION OF THE EXISTING BRIDGE

- 199' long, 8 spans, 15' wide curb to curb
- Concrete deck with asphalt overlay, metal pipe and concrete pylon bridge barrier
- Concrete encased steel I-Beam bridge with stone masonry piers and abutments
- Superstructure, abutments, wingwalls and Piers 1, 6 & 7 constructed in 1932
- Piers 2 through 5 constructed of large stone masonry estimated circa 1850
- Planned rehabilitation executed in 1972
- Several subsequent emergency repairs
- The bridge is not individually eligible or a contributing resource to an eligible historic district on the National Register of Historic Places



View of Pier 6 (Pier 1 is southernmost)

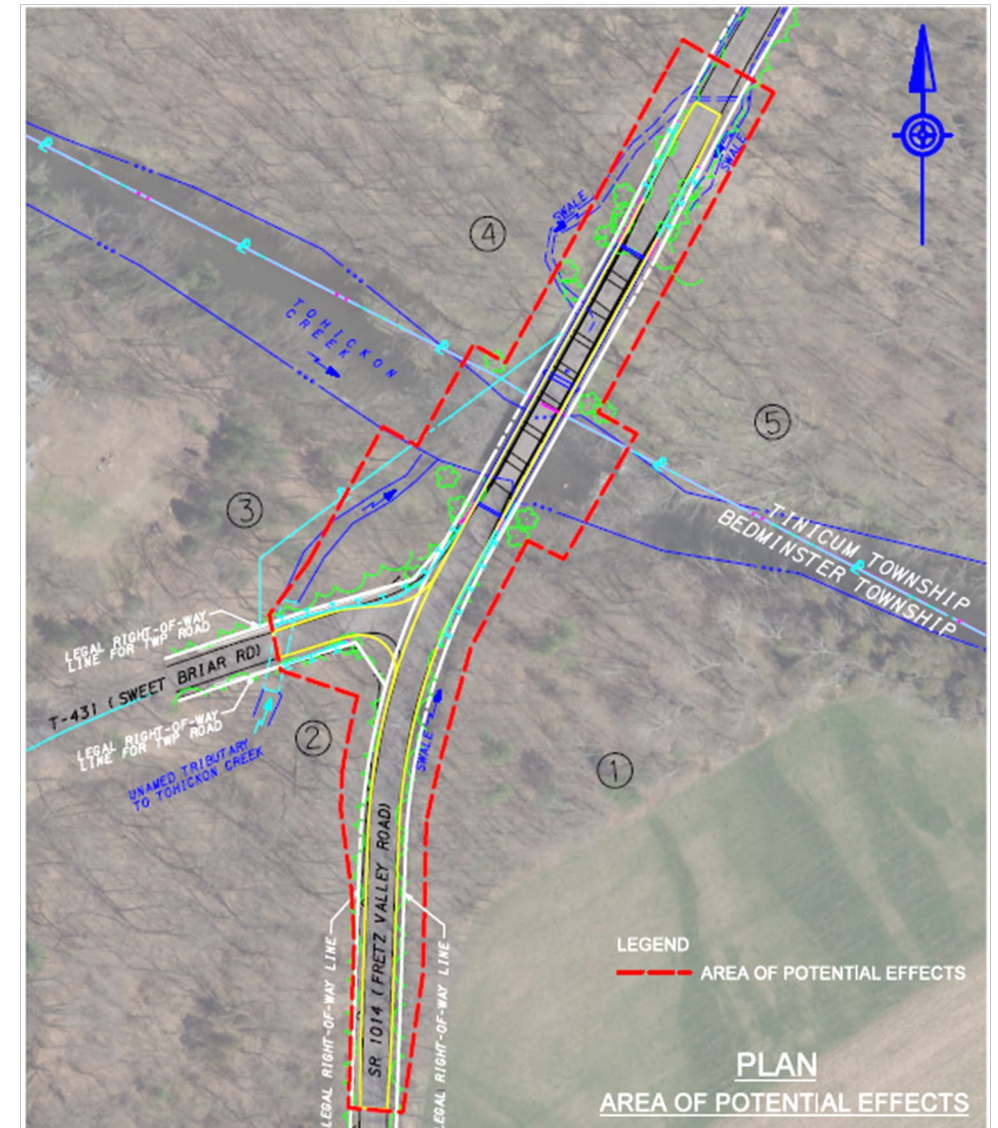


View of Pier 4 (Pier 1 is southernmost)



SITE CONSTRAINTS AND RESOURCES

- Tohickon Creek – designated by National Park Service as Wild and Scenic
- Unnamed tributary to Tohickon Creek near intersection with Sweetbriar Road
- Wetlands upstream of bridge, on north bank of Tohickon Creek
- Threatened and Endangered Species
- Potential for archeological resources
- Bridge approaches
- Intersection with Sweetbriar Road



BRIDGE APPROACHES



View of south approach to bridge, looking north



View of north approach to bridge, looking south

CREAMERY & SWEET BRIAR ROADS INTERSECTION



View of intersection from Creamery Road, looking south.



View of intersection from Creamery Road, looking north.

PROJECT PURPOSE



The purpose of the project is to **maintain transportation mobility** along Creamery Road by providing a **structure capable of effectively supporting the modern transportation needs** of the surrounding community and roadway network.

PROJECT NEEDS

1. The existing bridge does not accommodate **two-way traffic** for:
 - a. Passenger cars and school buses
 - b. Fire/EMS
 - c. Snowplows/deicing activities
 - d. Farm equipment



PROJECT NEEDS

2. The sight distance on the approaches to the bridge, and the roadway cross slope on the north approach are deficient
3. The existing bridge barrier cannot safely redirect errant vehicles
4. The stone wingwall parapets are an unmitigated hazard for errant vehicles



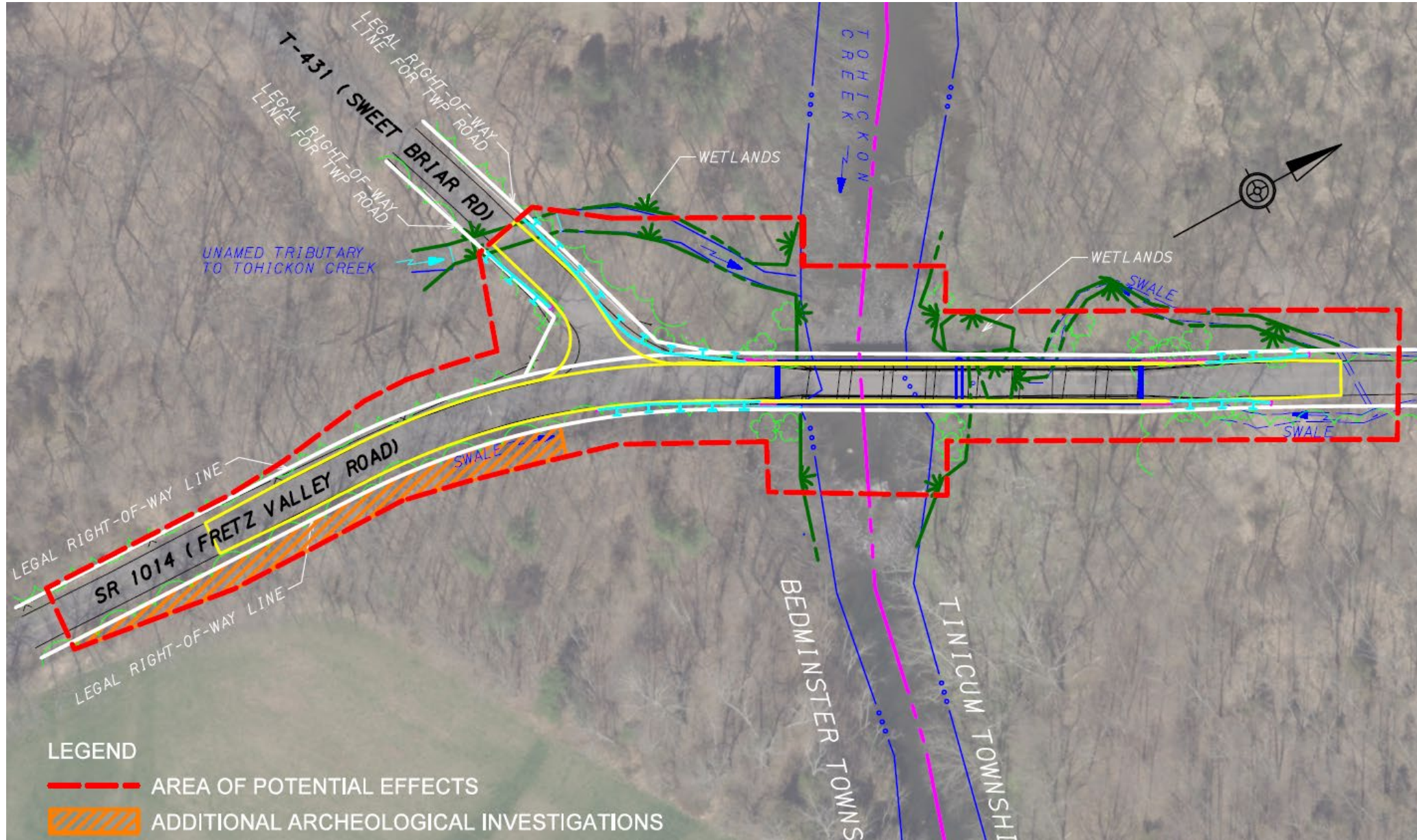
View of the south approach to the bridge, looking north.



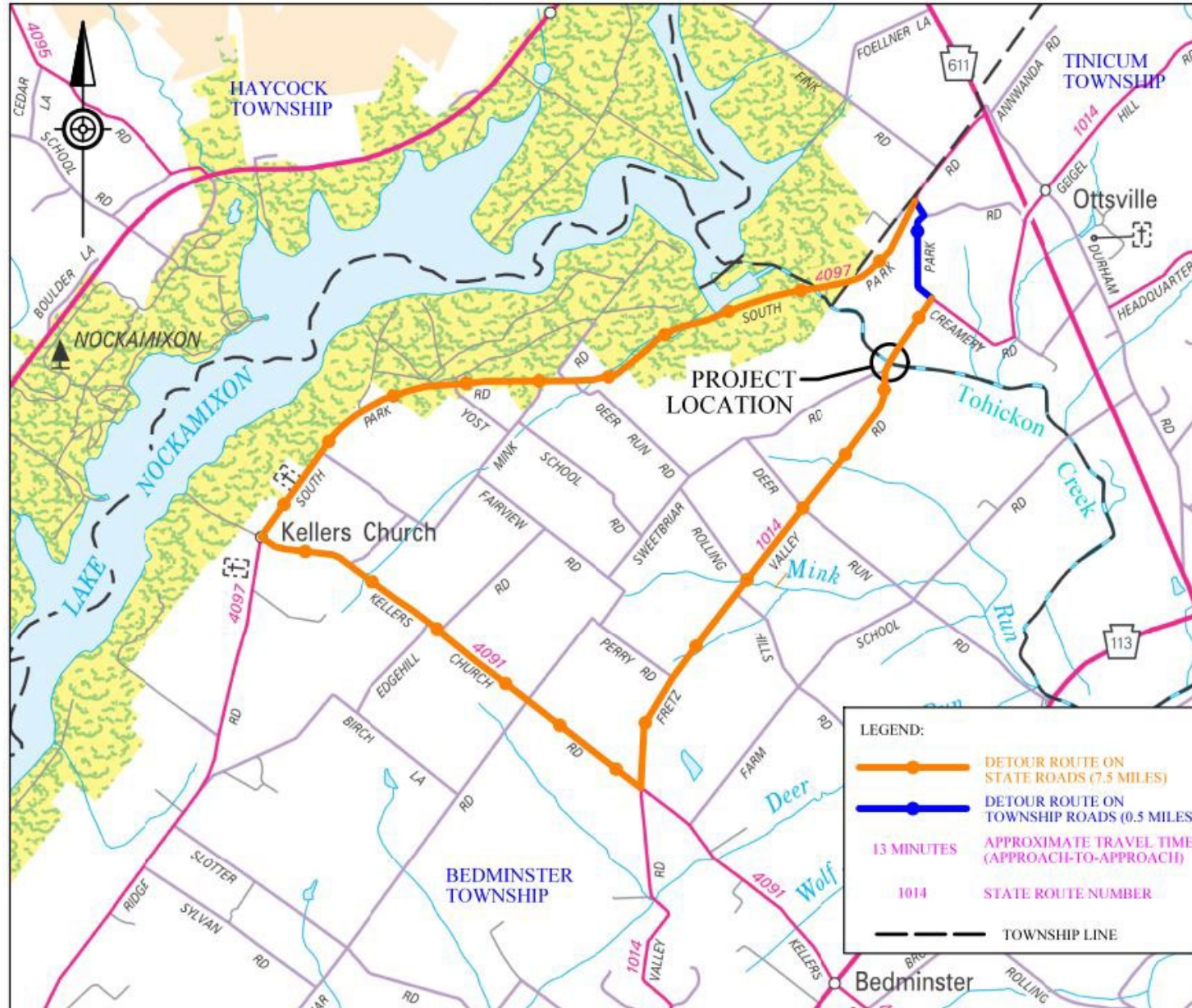
View of the north approach to the bridge, looking south.



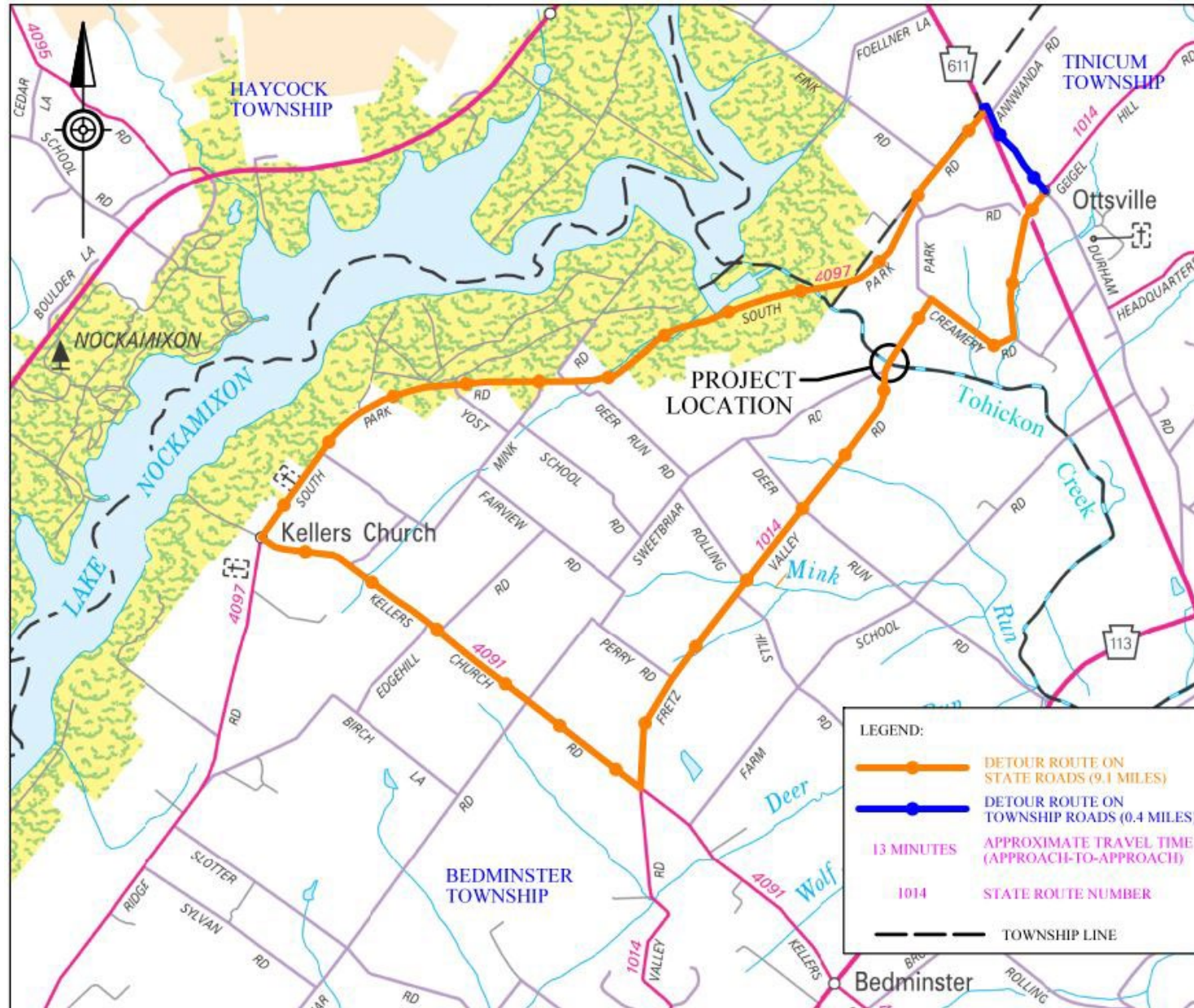
AREA OF POTENTIAL EFFECTS



DETOUR ROUTE – ALTERNATIVE 1



DETOUR ROUTE – ALTERNATIVE 2



NEXT STEPS AND TIMING

Preliminary Engineering

Final Design

Begin Construction

Present

- Structure type, size and location
- Traffic control – detour development and coordination
- Preliminary Hydraulic and Hydrologic study
- Environmental studies, coordination and documentation
- National Environmental Policy Act document
- Bridge aesthetics feedback

Winter 2024

- Finalize bridge and roadway design
- Right-of-way acquisition
- Coordinate utility relocations
- Environmental permits
- Additional public involvement/stakeholder meetings
- Bid package development, advertisement and contractor selection

2026





Project Manager Contact:
Ryan Whittington, PE
610-205-6871
c-rwhittin@pa.gov



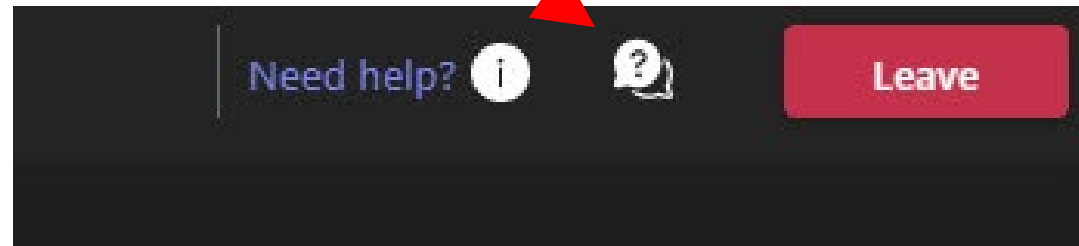
**For additional information
and project updates:**
[Creamery Road over Tohickon Creek
Bridge Project \(pa.gov\)](https://www.penndot.pa.gov/RegionalOffices/district-6/ConstructionsProjectsAndRoadwork/BucksCounty/Pages/Creamery-Road-over-Tohickon-Creek-Bridge-Project-.aspx)

<https://www.penndot.pa.gov/RegionalOffices/district-6/ConstructionsProjectsAndRoadwork/BucksCounty/Pages/Creamery-Road-over-Tohickon-Creek-Bridge-Project-.aspx>



QUESTIONS?

Questions can be submitted by clicking on the Q&A feature located at the top of your screen



Please note the slide number in your question



THANK YOU FOR PARTICIPATING!

FOR MORE INFORMATION, VISIT THE PENNDOT DISTRICT 6 WEBSITE

WWW.PENNDOT.PA.GOV/REGIONALOFFICES/DISTRICT-6