

Byberry Road Bridge Replacement over CSX

Presented by:

Paul Valliere, PE, Consultant Project Manager, PennDOT District 6-0

Candace Funston, PE, Project Manager, TranSystems

December 13, 2022

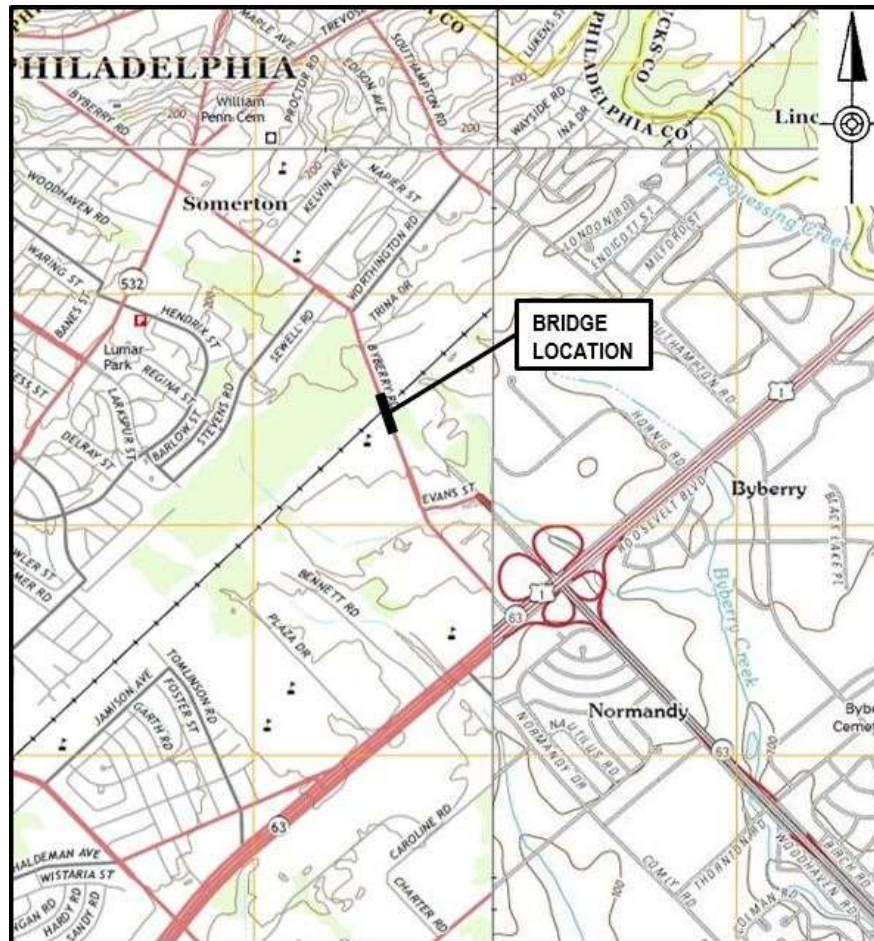


Welcome and Introductions

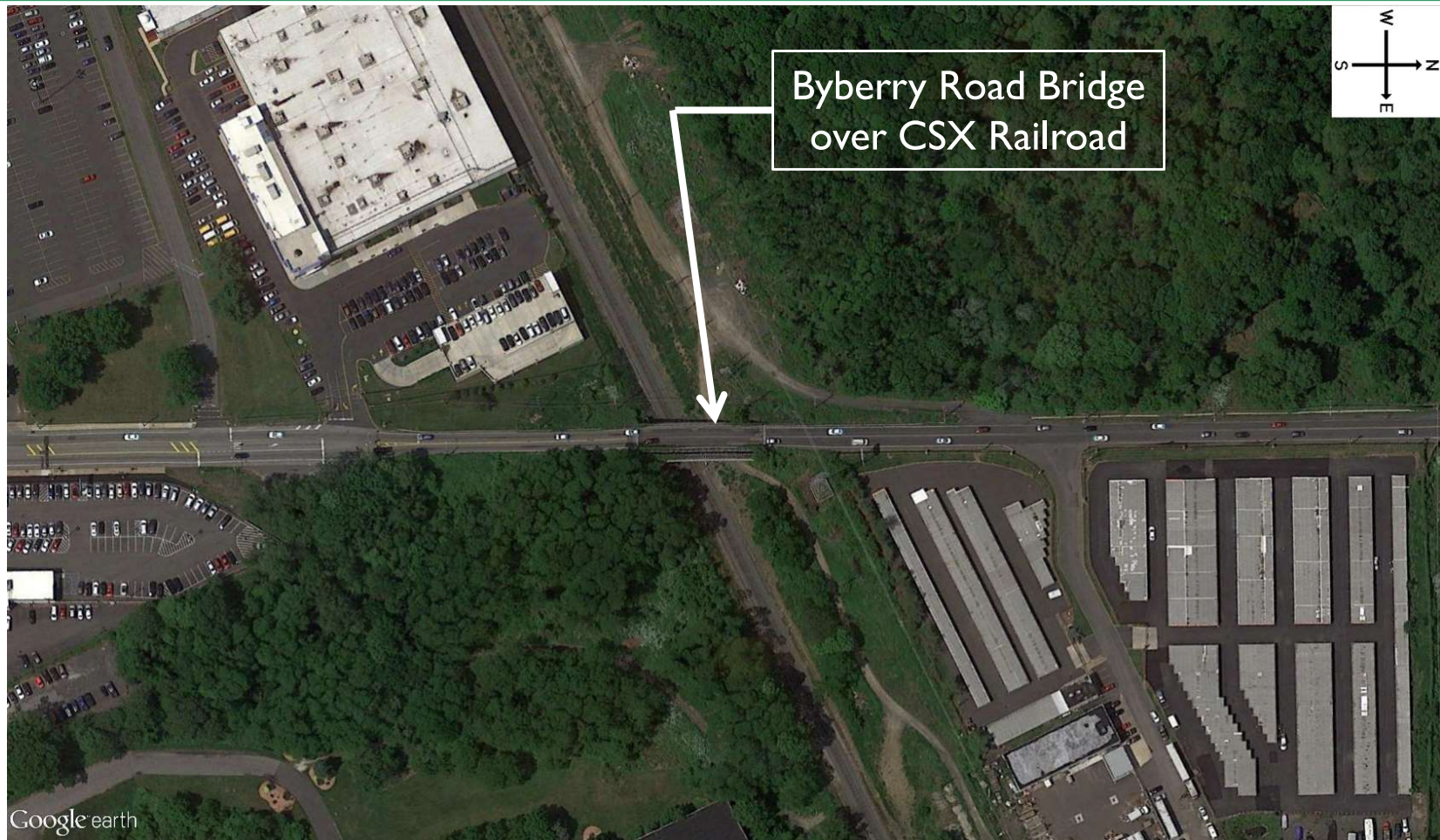
Purpose & Need

- ▶ **Public Utility Commission (PUC) Order to replace Byberry Road Bridge**
- ▶ **PennDOT replaced existing bridge with a temporary structure in 1996**
 - ▶ **Poor Condition**
 - ▶ **Approaching end of service life**
- ▶ **City Street and City Bridge**

Project Location Map



Aerial View



Existing Bridge



Byberry Road (Looking Toward Bustleton Ave)



Byberry Road (Looking Toward Roosevelt Blvd)



MaST Charter School Driveway



Proposed Bridge Replacement

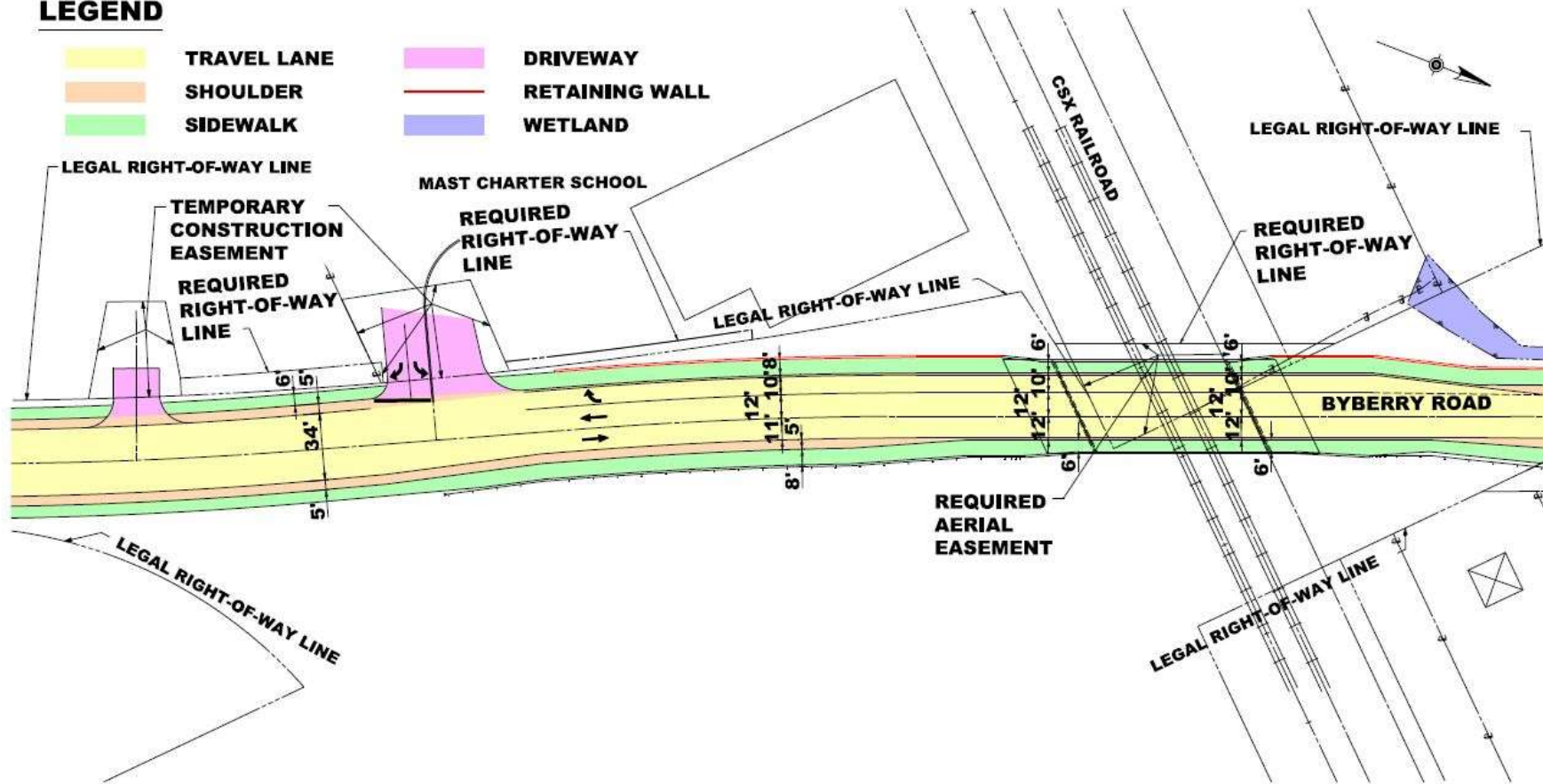
Proposed Replacement Bridge

- ▶ **New Bridge carries two thru-lanes, one eastbound right turn lane and two 6-foot-wide sidewalks.**
- ▶ **Designed to accommodate full legal loads (eg. School buses, emergency service vehicles, delivery trucks). Byberry Road has been load restricted by City of Philadelphia and this will remain.**
- ▶ **Two lanes of traffic will be maintained utilizing staged construction.**

Preliminary Plan

LEGEND

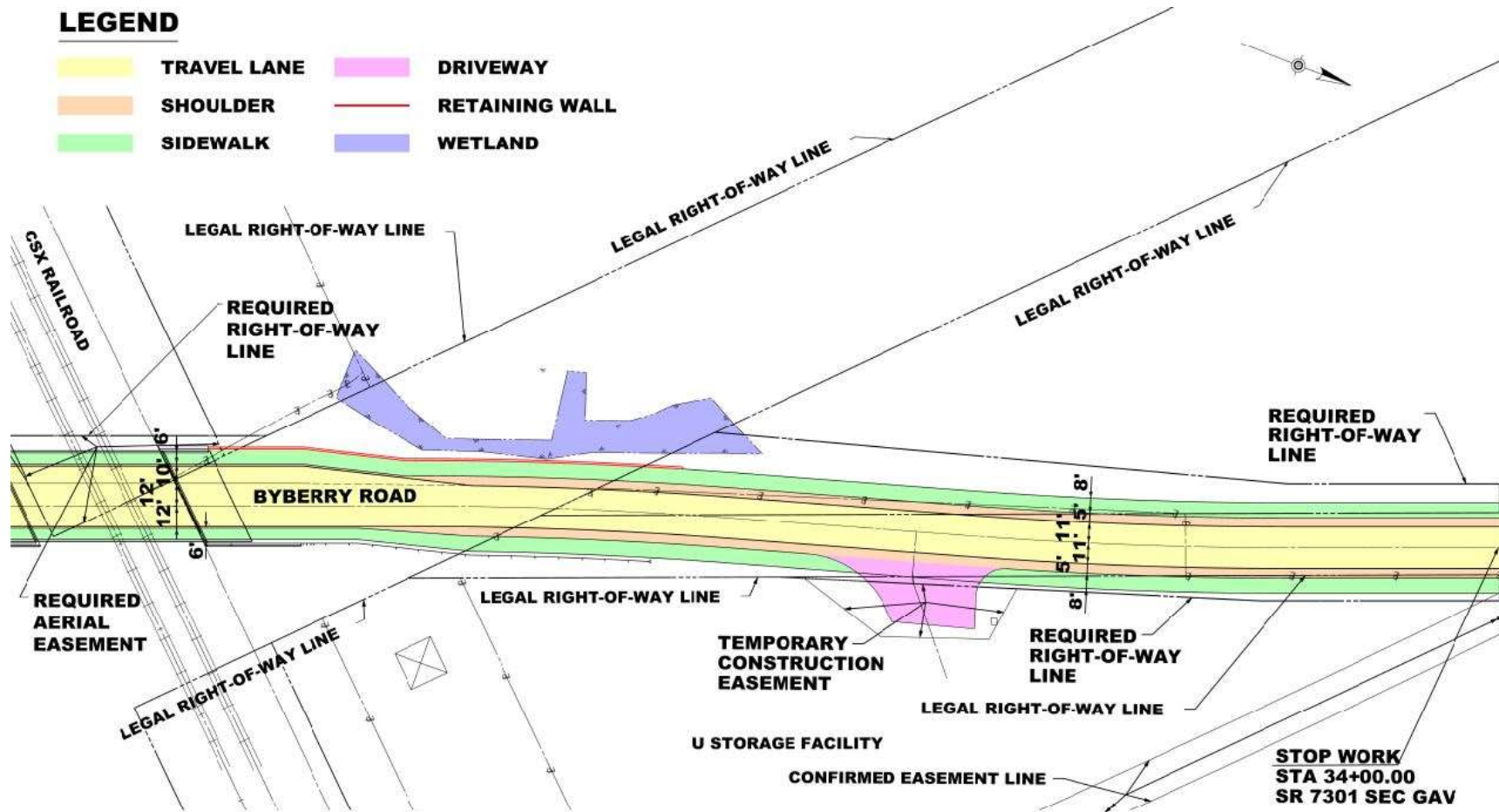
	TRAVEL LANE		DRIVEWAY
	SHOULDER		RETAINING WALL
	SIDEWALK		WETLAND



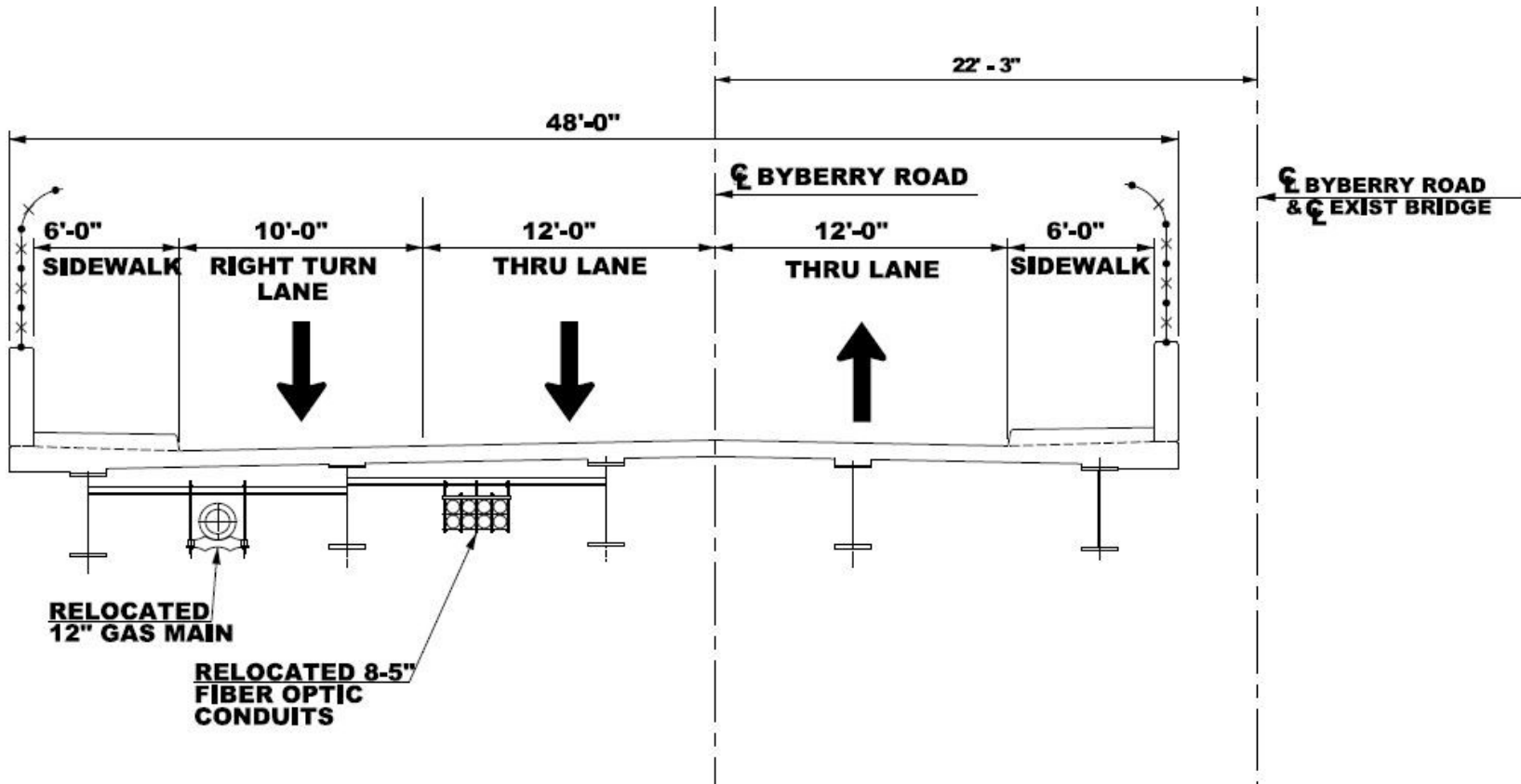
Preliminary Plan

LEGEND

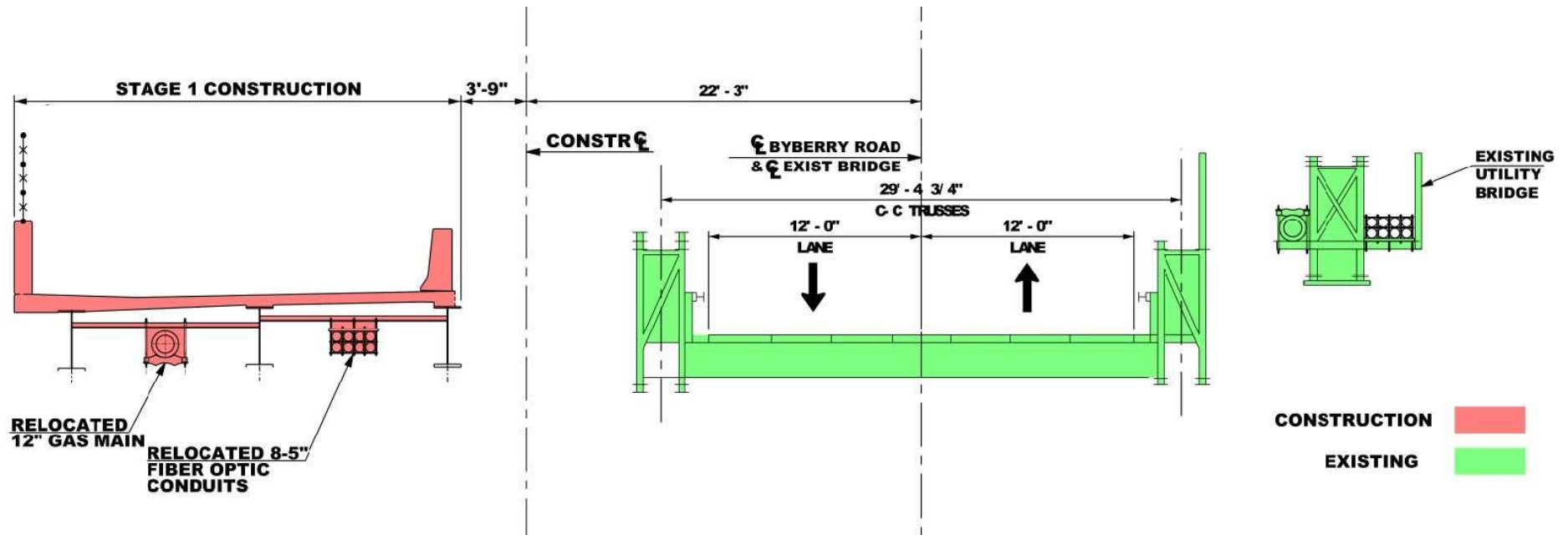
	TRAVEL LANE		DRIVEWAY
	SHOULDER		RETAINING WALL
	SIDEWALK		WETLAND



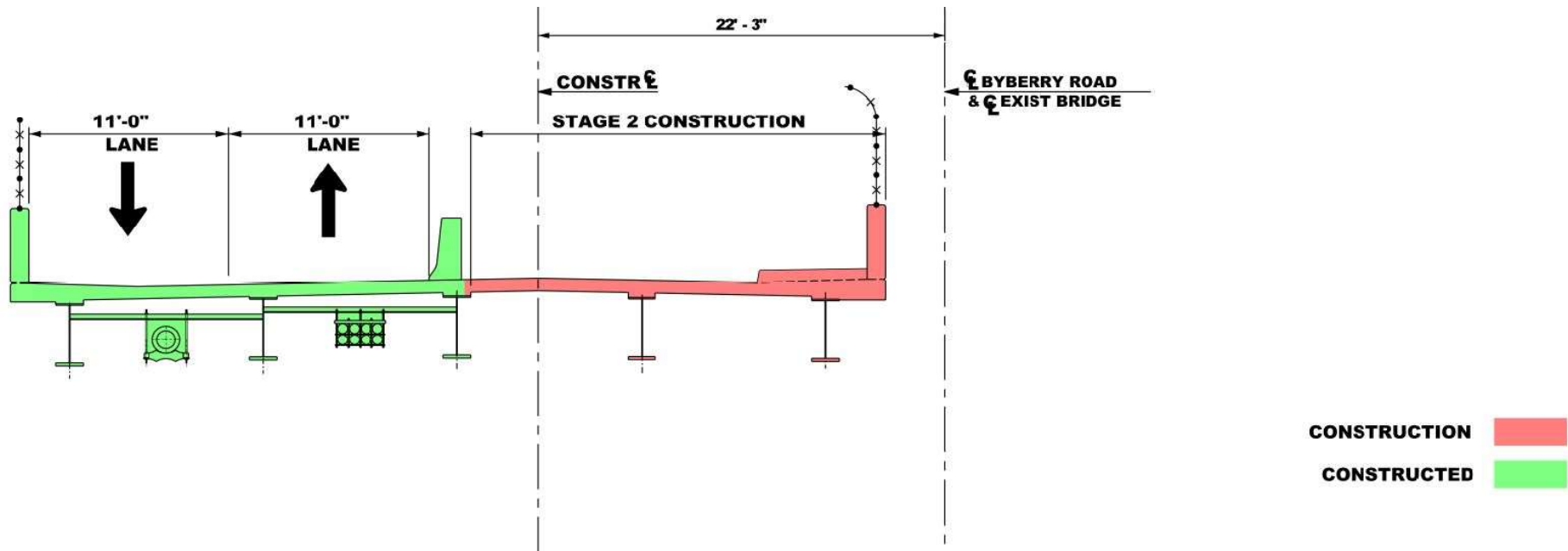
Bridge Section (Looking Toward Bustleton Ave)



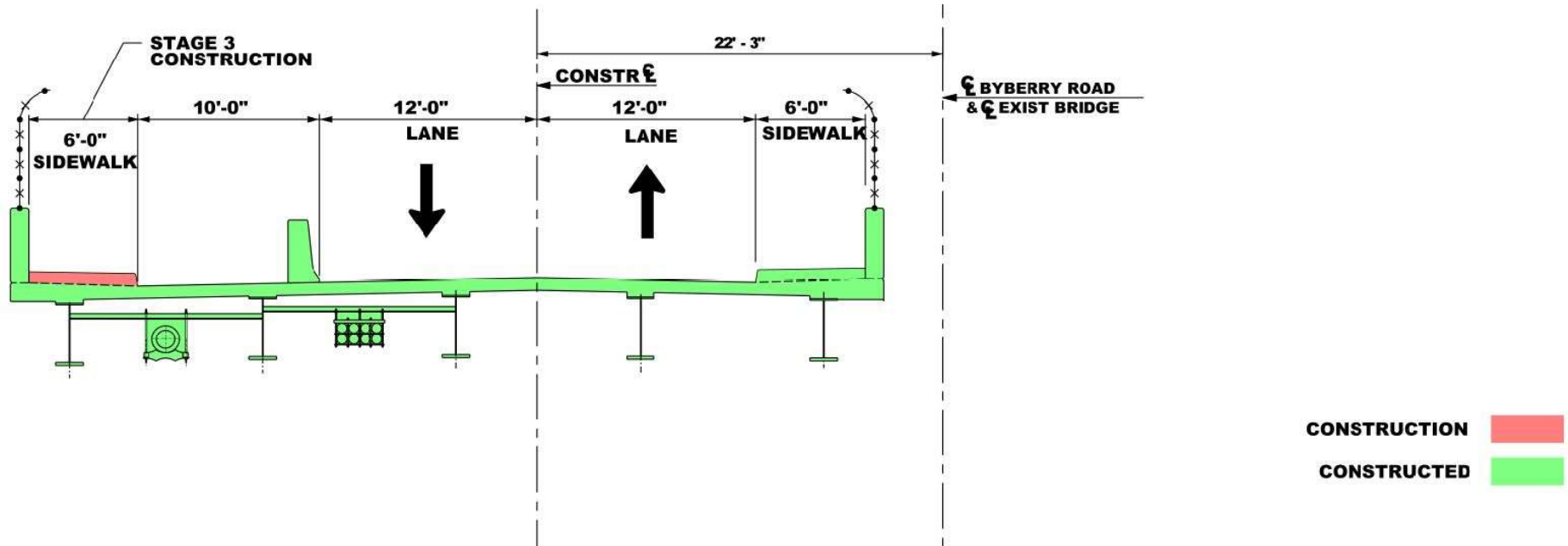
Construction—Stage I (Looking Toward Bustleton Ave)



Construction-Stage 2 (Looking Toward Bustleton Ave)



Construction-Stage 3 (Looking Toward Bustleton Ave)



Feedback Questions and Answers