

AIRY STREET BRIDGE REPLACEMENT OVER MARKLEY STREET



JOSEFINA BROWN (PENNDOT)

THOMAS STORRS, PE (AECOM)

OCTOBER 9, 2025

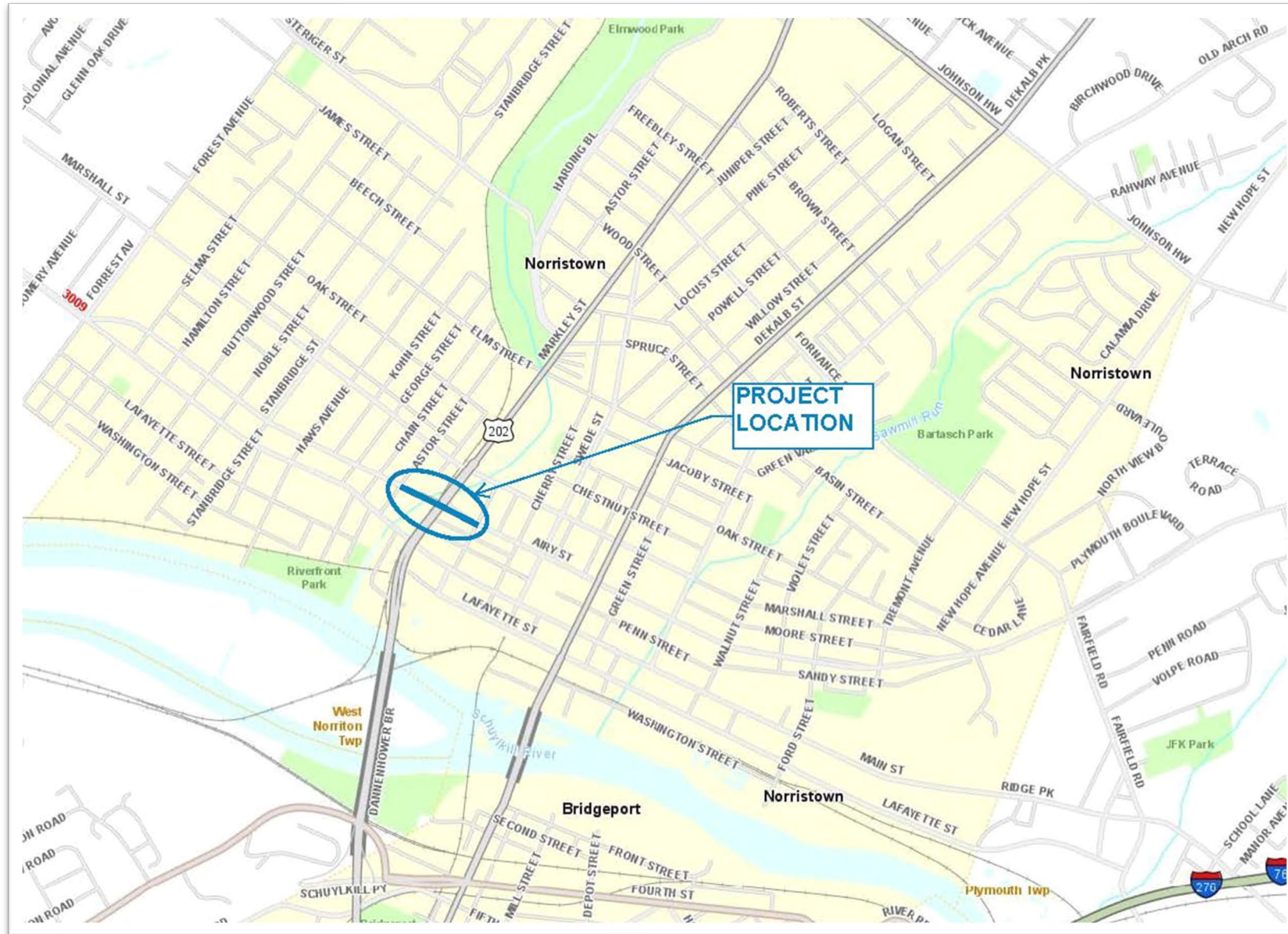
MUNICIPALITY OF NORRISTOWN, MONTGOMERY COUNTY

AGENDA

- Project Location
- Purpose and Need
- Existing Bridge Description
- Environmental Resources
- Project Improvements
- Traffic Control
- Project Schedule



PROJECT LOCATION

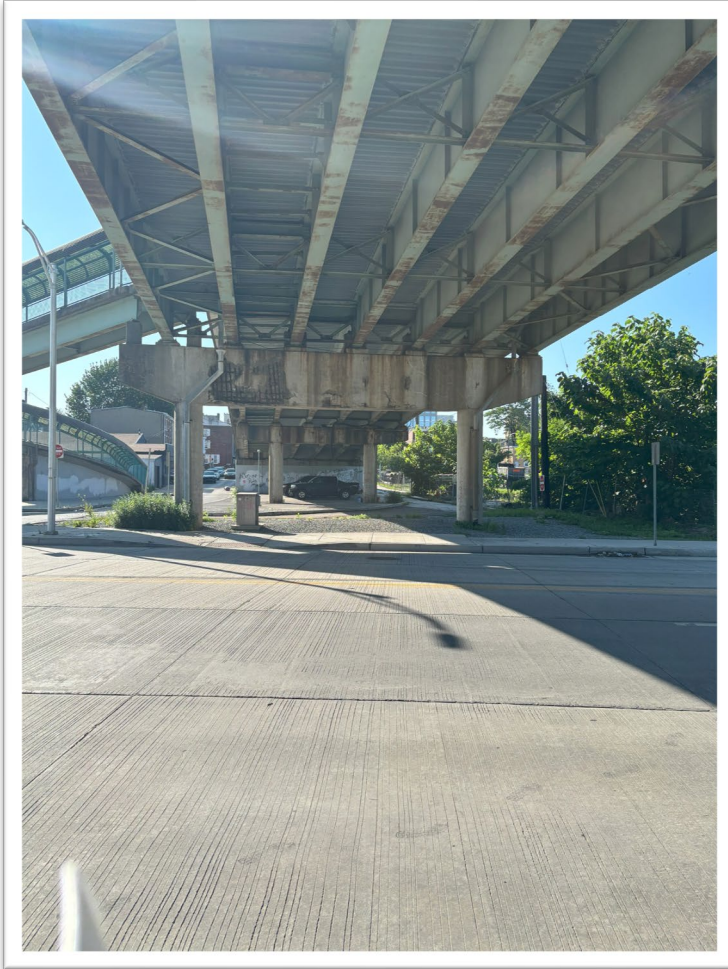


PROJECT PURPOSE



The purpose of the Project is to provide a safe and efficient crossing of the Airy Street bridge over Markley Street, SEPTA railroad line and Stony Creek for both vehicular and pedestrian traffic.

PROJECT NEED



The existing bridge is in overall poor condition.



The existing pedestrian bridge ramp from the Airy Street Bridge to Markley St. doesn't meet current (ADA) standards.



The existing vertical clearance above SEPTA railroad tracks doesn't meet current PennDOT or SEPTA requirements.

EXISTING BRIDGE DESCRIPTION

- Steel I-beam multi-girder bridge with concrete piers and abutments built in 1977
- 529 feet long with five spans
- Curb to curb width of 36 feet
- 7 foot-wide pedestrian bridge on north side
- Carries two lanes of westbound traffic (one-way)
- 7,164 vehicles use the bridge each day

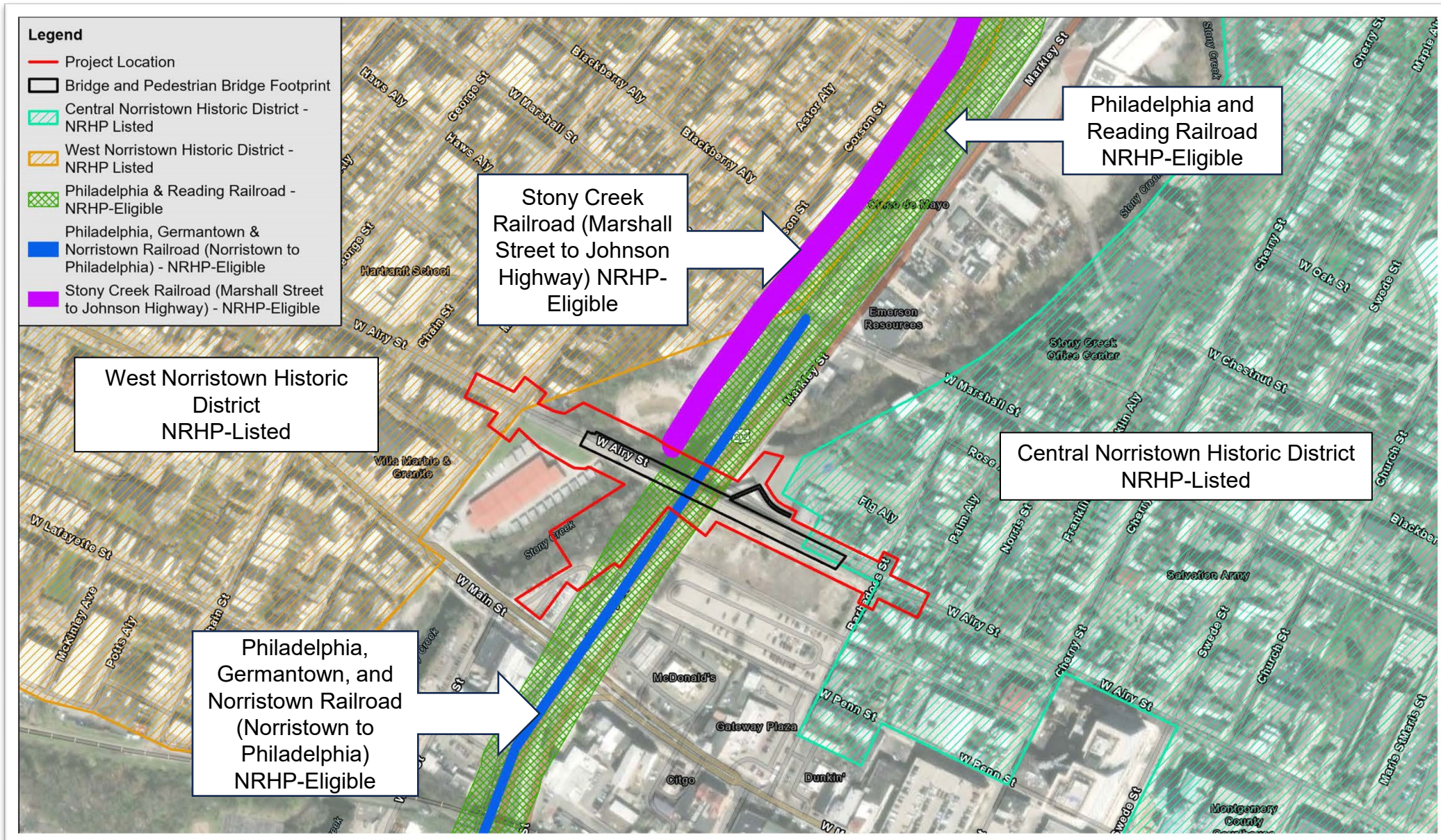


ENVIRONMENTAL RESOURCES

- Historic Resources
- Stream (Stony Creek)
- Poley Park (Section 4f)



ABOVE-GROUND CULTURAL RESOURCES



AQUATIC RESOURCES

Pennsylvania Water Quality Regulations – 25 PA Code, Chapter 93

- Stony Creek is designated as a Trout Stocked Fishery (TSF) with Migratory Fish (MF)
- Stony Creek is identified by the PA Fish and Boat Commission as a Stocked Trout Water*

*with the lower limit of the stocked portion ending approximately 2,000 feet upstream of the project area



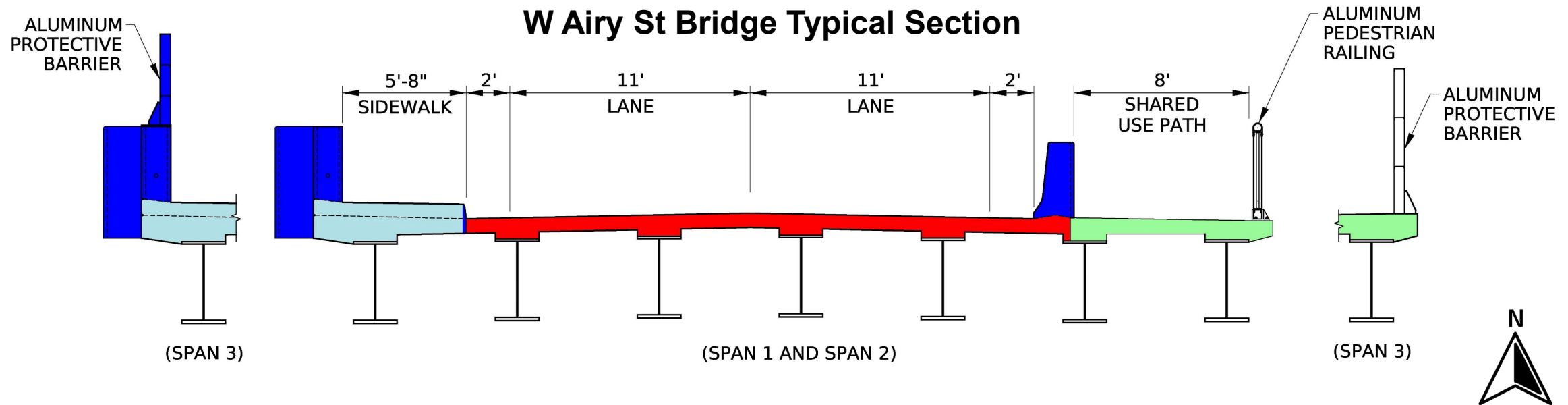
SECTION 4(F) RESOURCES

- **Poley Park** – not impacted by proposed bridge replacement
- **Proposed Skate Park** – not impacted by proposed bridge replacement



Poley Park

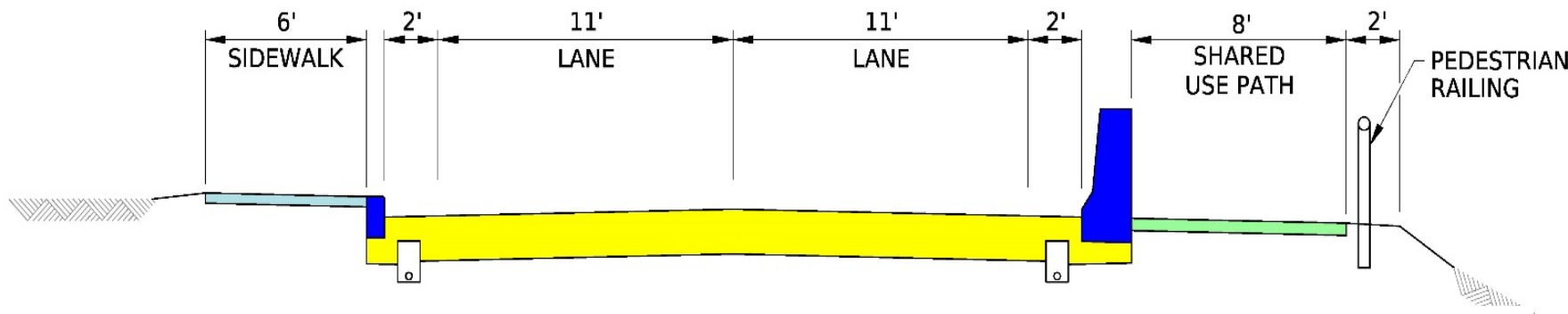
PROPOSED BRIDGE TYPICAL SECTION



- The anticipated proposed bridge will be a 3-span, steel plate girder bridge, approximately 386 feet long.
- The proposed bridge will carry two (2) westbound travel lanes.
- A 5-foot wide sidewalk will be provided on the north side.
- An 8-foot wide shared use path will be provided on the south side.

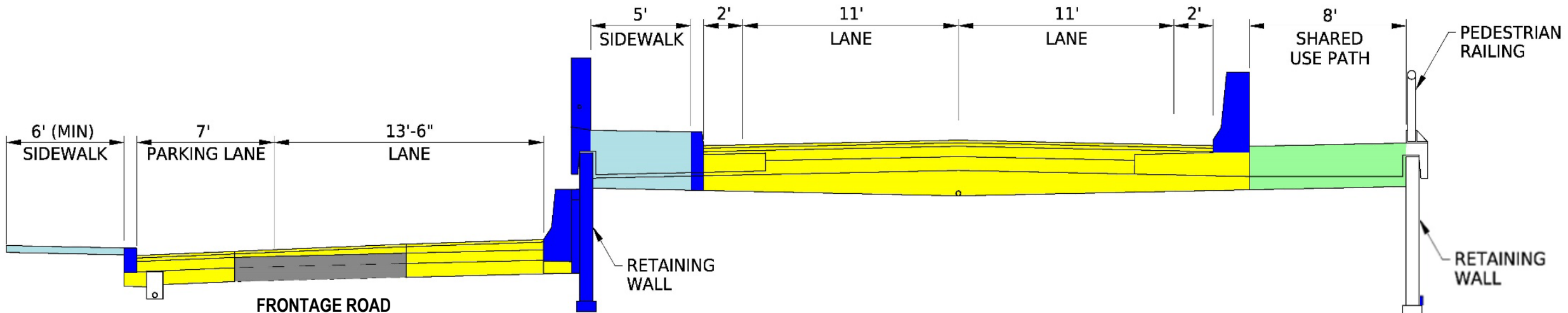


PROPOSED ROADWAY TYPICAL SECTIONS



W Airy St Roadway Typical Section – Astor St to Bridge

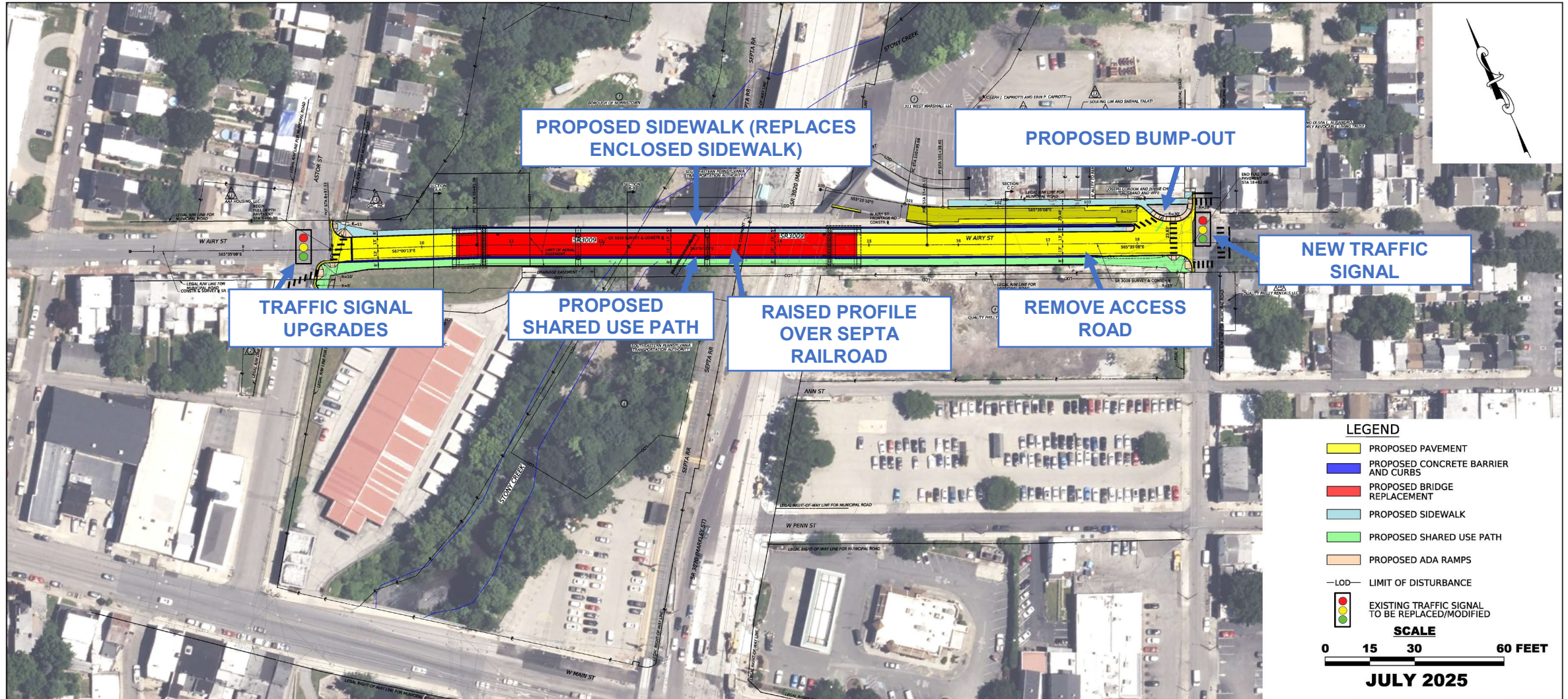
- Airy St. will be reconstructed between Astor St. and Barbadoes St.
- Airy St. will have retaining walls on both sides between Markley St. and Barbadoes St.



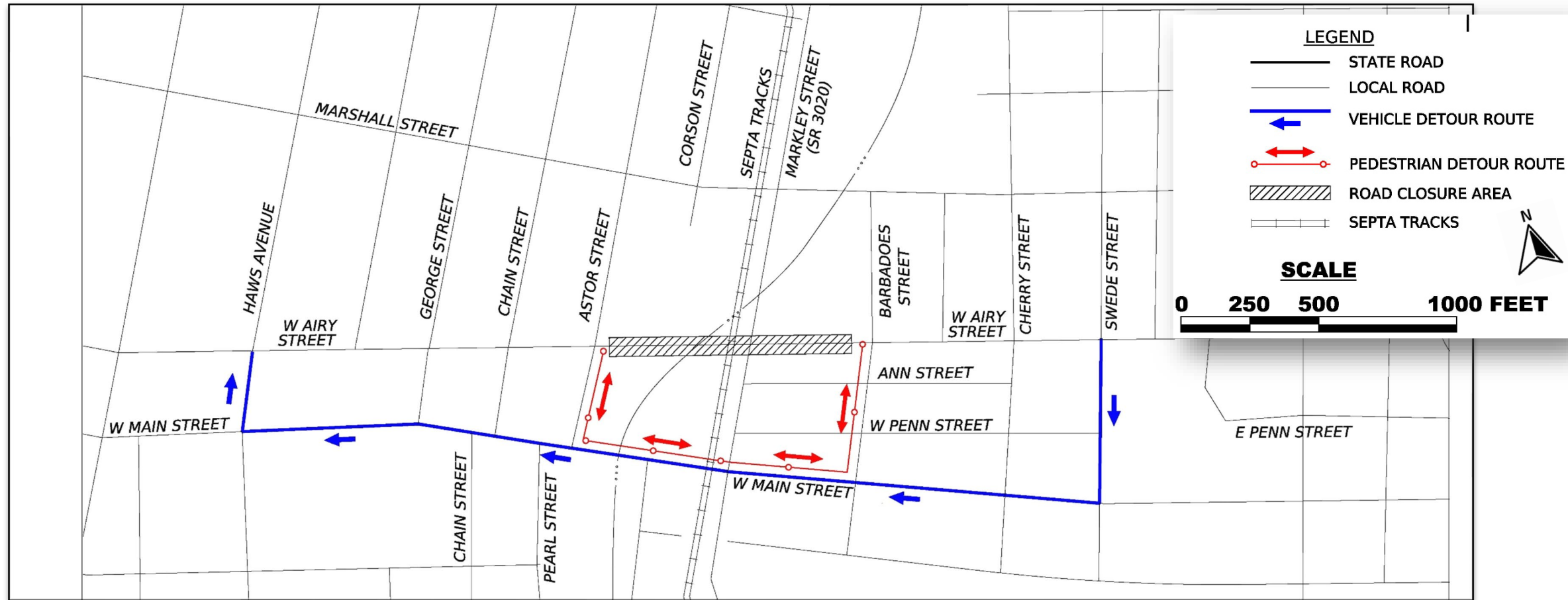
W Airy St Roadway Typical Section – Bridge to Barbadoes St



BRIDGE AND ROADWAY IMPROVEMENTS



TRAFFIC CONTROL – DETOUR PLAN



- Vehicular detour will use Swede St., Main St. and Haws Ave.
- Access will be maintained to properties on W. Airy St.
- Pedestrian detour use Barbadoes St., Main St. and Astor St.



ANTICIPATED PROJECT SCHEDULE

| | 2022 | 2023 | 2024 | 2025 | 2026 | 2027 | 2028 | 2029 | 2030 |
|---|------|------|------|------|------|------|------|------|------|
| Preliminary Engineering | | | | | | | | | |
| Final Design, ROW, Permitting & Utility Coordination | | | | | | | | | |
| Anticipated Construction | | | | | | | | | |

