

U.S. 422 CORRIDOR IMPROVEMENTS PROGRAM

U.S. 422 Projects Completed:

U.S. 422 Pleasantview Road and Park Road Bridges (U.S. 422, Section MAB)

- Cost: \$7.2 million
- Funding: 80% Federal, 20% State
- Started: May 2020
- Completed: April 2022
- Contractor: H&K Group, Inc.

This project involved the replacement of two overhead bridges carrying Pleasantview Road and Park Road over U.S. 422 in Lower Pottsgrove Township, Montgomery County.

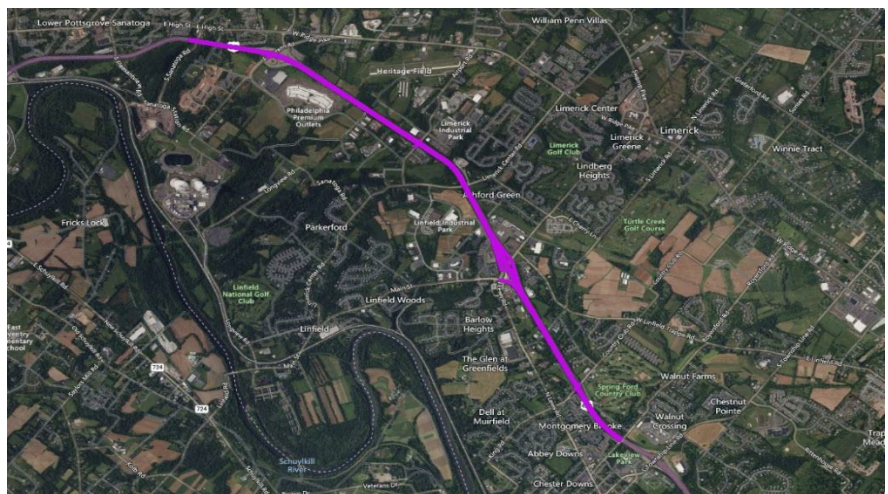


The overhead bridges were advanced to expedite the replacement a poor condition bridge carrying U.S. 422 over Sanatoga Road before a full reconstruction could occur. This replacement project was originally incorporated into the U.S. 422, Section M1B project that is under construction with Notice to Proceed issued on November 13, 2023, and an anticipated substantial completion date of January 9, 2028.

U.S. 422 Pavement & Bridge Preservation (U.S. 422, Section PM2)

- Cost: \$19.3 million
- Funding: 100% Federal
- Started: January 2019
- Completed: July 2022
- Contractor: H&K Group, Inc.

This project rehabilitated pavement and seven structures along a five-mile section of U.S. 422 between the Royersford / Trappe and Sanatoga Interchanges in Limerick and



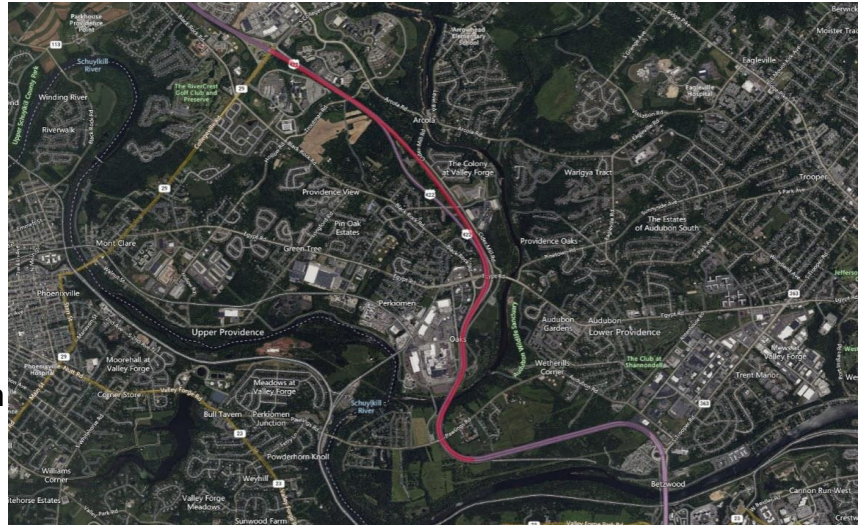
Lower Pottsgrove Townships, Montgomery County.

PennDOT's contractor milled, overlaid and rehabilitated existing U.S. 422 pavement; performed bridge deck repairs, concrete and joint patching, sealing and drainage improvements; installed new guide rail and rumble strips; and repaired or replaced damaged traffic signs along the corridor.

U.S. 422 East: PA 29 to Pawlings Road (U.S. 422, Section MCP)

- Cost: \$6.89 million
- Funding: 100% State
- Started: August 2023
- Completed: November 2024
- Contractor: J.D. Eckman, Inc.

This project repaired pavement and performed accelerated concrete patching on a four-mile section of eastbound U.S. 422 from just east of Route 29 (Collegeville Road) to just east of the Pawlings Road overpass in Upper Providence and Lower Providence townships, Montgomery County.

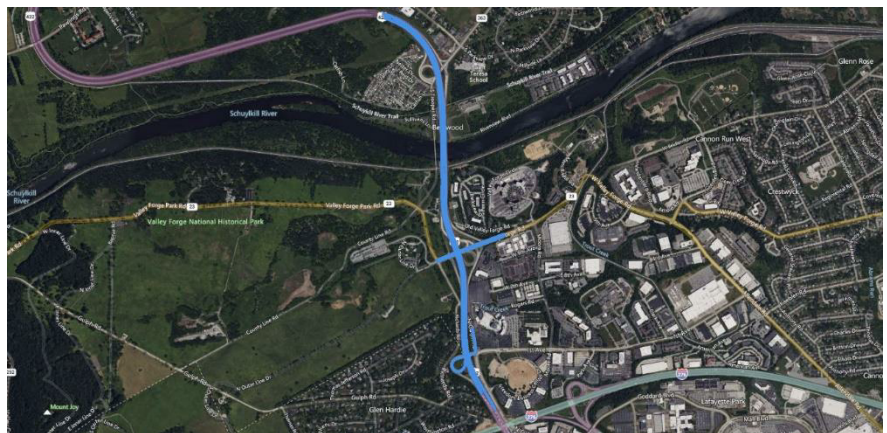


PennDOT's contractor repaired the existing pavement with accelerated concrete patching; performed bridge deck repair, diamond grinding, and joint sealing; and installed reflective pavement markings.

U.S. 422 Schuylkill River Bridges (U.S. 422, Section SRB)

- Cost: \$97.4 million
- Funding: 80% Federal, 20% State
- Started: February 2016
- Completed: November 2020
- Contractor: J.D. Eckman, Inc.

This project built new, wider bridges on U.S. 422 and reconstructed a one-mile section of the expressway in Upper Merion, West Norriton and Lower Providence Townships, Montgomery County.



Construction included a new structure to carry U.S. 422 westbound traffic over the Schuylkill River, Norfolk Southern Railroad, South Trooper Road and the Schuylkill River Trail. The existing U.S. 422 bridges were rebuilt to provide new structures for eastbound travelers.

This project also included widening U.S. 422 between the Route 23 (Valley Forge Road) and Route

363 (Trooper Road) Interchanges; upgrading Route 23 (Valley Forge Road) at its interchange with U.S. 422; improving ramps at the Route 363 (Trooper Road), Route 23 (Valley Forge Road) and First Avenue Interchanges; and repairing and resurfacing approximately 900 feet of eastbound and westbound U.S. 422, just west of the Route 363 (Trooper Road) Interchange.

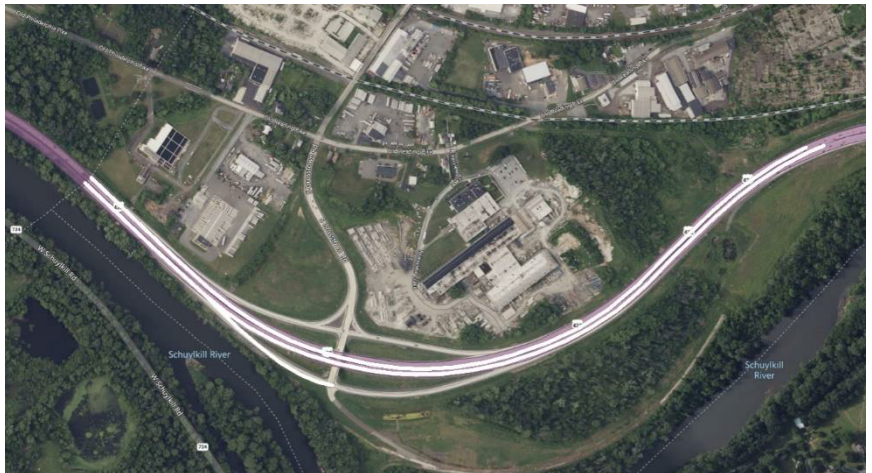
This U.S. 422 improvement project is part of the Schuylkill River Crossing Complex of transportation improvement projects, which consists of four separate projects to improve multi-modal travel and reduce congestion between the Route 363 (Trooper Road) and Route 23 (Valley Forge Road) Interchanges.

In December 2015, two new ramps opened at the nearby U.S. 422/Route 363 Interchange in West Norriton Township to provide motorists with ramp connections in all directions. In August 2016, PennDOT opened Sullivan's Bridge to restore the crossing over the Schuylkill River for bicyclists and pedestrians in Valley Forge National Historical Park.

U.S. 422 Berks County Line to Schuylkill River Bridge (U.S. 422, Section M2C)

- Cost: \$35.6 million
- Funding: 100% State
- Started: August 2017
- Completed: October 2019
- Contractor: H&K Group, Inc.

This project involved realignment of the "S-curve" along U.S. 422 and reconfiguration of the Stowe Interchange. The Stowe Interchange was reconfigured from the existing trumpet configuration with tight loop ramps to a diamond configuration. The horizontal radii comprising the Stowe "S-curve" were increased to meet current design standards including stopping sight distance. The bridge carrying eastbound on-and-off ramps over U.S. 422 at the Stowe Interchange was reconstructed with the reconfigured interchange to provide 16 feet, 6 inches of vertical clearance over U.S. 422. The structural improvements also included replacement of one culvert. ITS elements along U.S. 422 west of Hanover Street Interchange were also deployed.



U.S. 422 Schuylkill River Bridge at Stowe Interchange (U.S. 422, Section M2A)

- Cost: \$36.3 million
- Funding: 100% State
- Started: November 2014
- Completed: September 2018
- Contractor: J.D. Eckman, Inc.

This project replaced the dual bridges carrying U.S. 422 over the Schuylkill River between the Route 100 and Stowe Interchanges. The



three-staged improvement plan consisted of replacing the existing westbound and eastbound U.S. 422 structures and reconstructing the median on both approaches. The new U.S. 422 crossing is 924 feet long and 95 feet wide. The concrete beam structure carries two 12-foot travel lanes, a 12-foot outside shoulder and an 8-foot inside shoulder.

U.S. 422 Route 724 Interchange to Norfolk Southern (U.S. 422, Section M1A)

- Cost: \$73.4 million
- Funding: 80% Federal, 20% State
- Started: September 2012
- Completed: December 2018
- Contractor: J.D. Eckman, Inc.

This project constructed new U.S. 422 structures over the Schuylkill River and over Norfolk Southern railroad tracks; rebuilt U.S. 422 from the Schuylkill River bridge to the Porter Road overpass; installed new median barrier; replaced the Armand Hammer Boulevard bridge over U.S. 422; improved and realigned ramps at the U.S. 422/Armand Hammer Boulevard Interchange; reconstructed and realigned the ramp from Route 724 to U.S. 422 East; improved stormwater drainage; erected three overhead sign structures; installed conduit for future Intelligent Transportation System (ITS) equipment; and installed new guide rail and signs.

