

U.S. 422 M1B Construction Update: Spring 2025

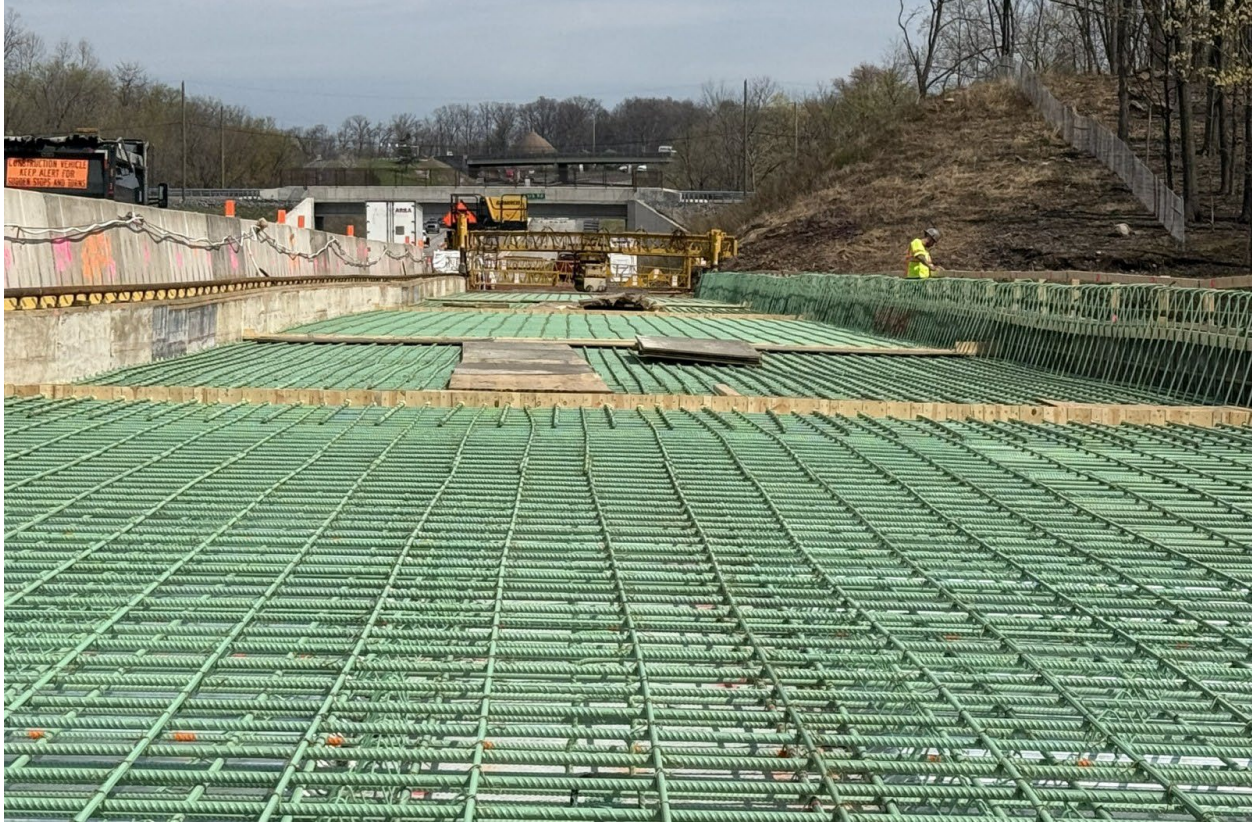
Eastbound Paving Begins This Spring

Spring 2025 – Paving begins this spring on the eastbound side of U.S. 422 under Stage 2 of PennDOT's \$83.6 million Section M1B project to reconstruct and improve 2.1 miles of the highway in Lower Pottsgrove Township, Montgomery County.



Over the winter, PennDOT's contractor made significant progress excavating and grading the eastbound side of U.S. 422 (*see above*) between the Norfolk Southern railroad tracks just west of Porter Road to the Sanatoga Interchange to make way for paving operations that will begin this spring and be completed in the fall.

Construction of bridge piers and abutments for the eastbound portion of the new structure carrying U.S. 422 over Sanatoga Road and the Sanatoga Creek were completed in early spring. With deck beams in place (*see below*), the contractor began placing the bridge's concrete riding surface in mid-April.



Further west, pier and abutment construction was completed last winter for the new eastbound bridge over Porter Road and Sprogels Run. Deck beams also were placed (see *below*), and the concrete deck will be poured this spring.

Stage 2 construction will continue until the fall of 2025. Eastbound traffic will then shift onto the new pavement and shoulder, and westbound traffic will shift onto the median area to allow for reconstruction of the westbound pavement and shoulder area.

Once the project is completed, the highway will have improved curve radii, shoulder widths, and vertical clearance that will enhance travel and safety for motorists.



Installation of Intelligent Transportation Systems (ITS) components — electronic message signs, and traffic cameras — included in the project also is underway on roadways that feed traffic onto U.S. 422 and adjacent arterials at various locations. ITS work this winter into next spring will find crews working on Route 23 in Chester County, in Spring City, Phoenixville, and Valley Forge areas.

Motorists will encounter regular off-peak daytime and overnight lane closures during Stage 2 construction.

In addition to reconstructing the travel lanes and shoulders in both directions to enhance travel and safety, improvements under this contract include:

- Constructing sound barriers along sections of westbound U.S. 422
- Improving the stormwater drainage system and stormwater management facilities with two new detention basins
- Upgrading highway signs



Work on the project is scheduled to finish in early 2028.

The construction contract, financed with 80 percent federal and 20 percent state funds, is the seventh project in PennDOT's initiative to rebuild and improve the U.S. 422 bypass near Pottstown. Since 2012, PennDOT has completed five projects, valued at \$263.4 million, to improve the U.S.422 corridor in Montgomery and Chester counties.

A sixth project (Section MCP) — addressing maintenance issues between the Trooper Road and Sanatoga Road exits — is also underway.

J.D. Eckman is the general contractor on Section M1B.