

SR 2027 (VERA CRUZ ROAD) OVER UNNAMED TRIBUTARY TO HOSENSACK CREEK BRIDGE PROJECT

Upper Milford and Lower Milford Townships, Lehigh County

BRIDGE FEATURES:

- BUILT IN 1938
(THREE CELL STEEL PIPE CULVERT)
- BRIDGE IS IN POOR CONDITION

PURPOSE:

- REPLACE THE EXISTING STRUCTURE IN A WAY THAT PROVIDES A SAFE CROSSING FOR THE TRAVELING PUBLIC WHILE MEETING CURRENT DESIGN STANDARDS

ANTICIPATED PROJECT SCHEDULE:

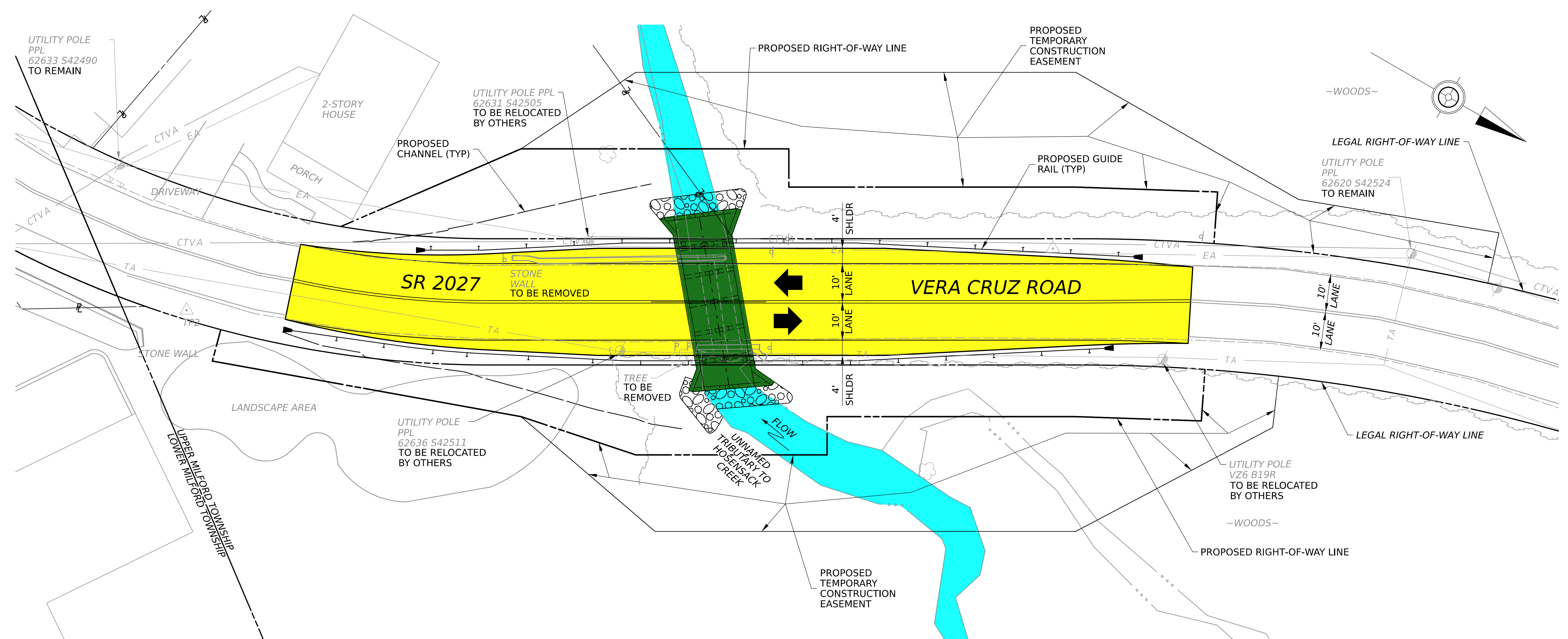
- (SUBJECT TO CHANGE)
- PRELIMINARY AND FINAL ENGINEERING
(PRESENT TO FALL 2026)
- AWARD CONTRACT
(FALL/WINTER 2026)
- CONSTRUCTION
(SPRING 2027 TO WINTER 2028)
- ANTICIPATED CONSTRUCTION
DURATION - 3 MONTHS



SR 2027 (VERA CRUZ ROAD) LOOKING NORTHWEST



SR 2027 (VERA CRUZ ROAD) LOOKING SOUTHEAST



PLAN VIEW

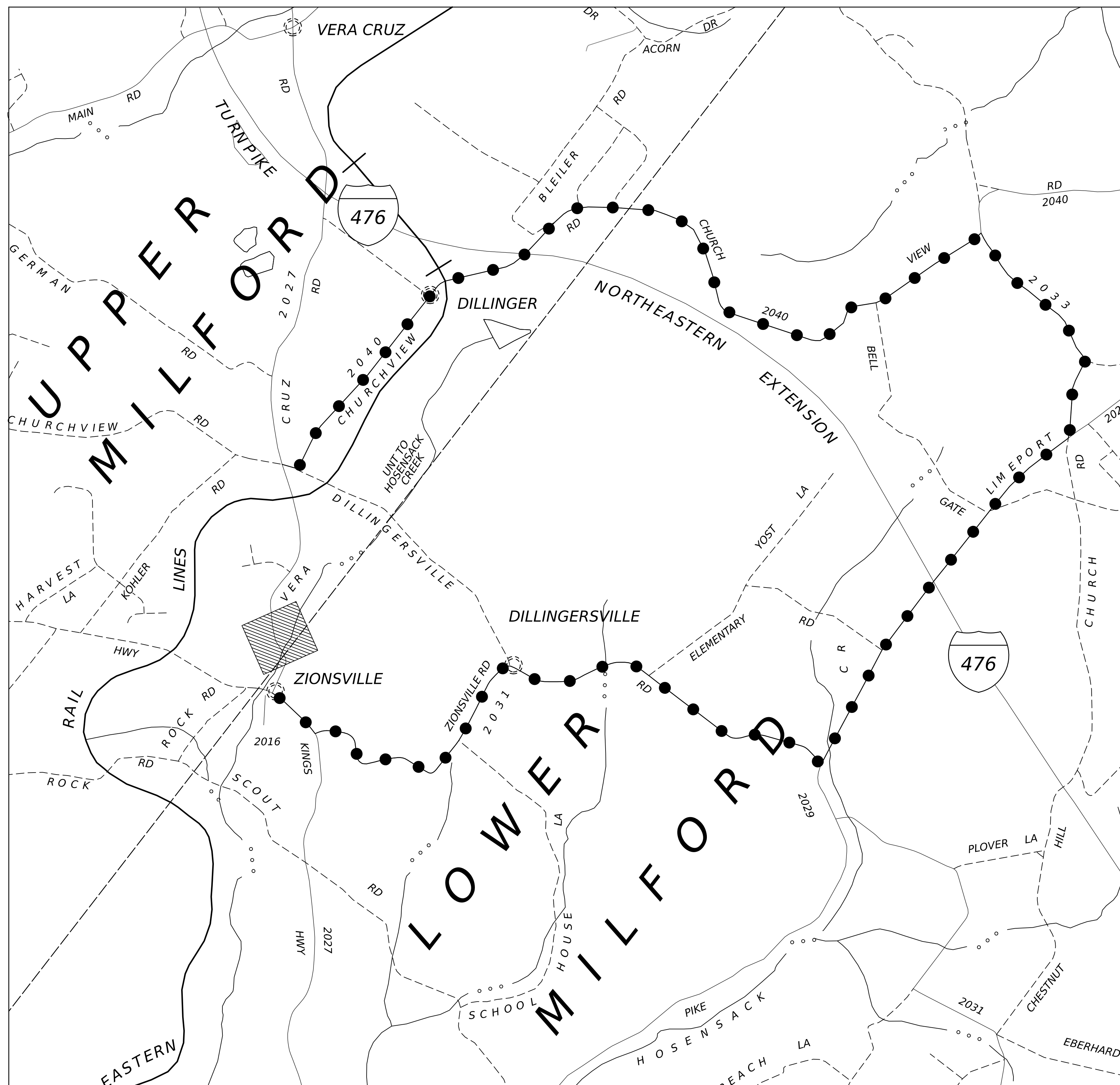
PRELIMINARY

LEGEND:

- PROPOSED FULL-DEPTH ROADWAY RECONSTRUCTION
- PROPOSED STRUCTURE
- UNNAMED TRIBUTARY TO HOSENSACK CREEK

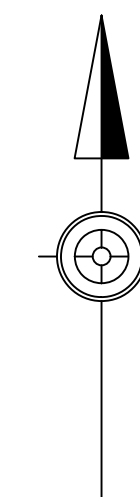
SR 2027 (VERA CRUZ ROAD) OVER UNNAMED TRIBUTARY TO HOSENSACK CREEK BRIDGE PROJECT

Upper Milford and Lower Milford Townships, Lehigh County



- LEGEND**
- PROJECT LOCATION
 - DETOUR (6.84 MILES)
 - STATE HIGHWAY
 - TOWNSHIP ROAD
 - MUNICIPAL BOUNDARY
 - STREAM

DETOUR MAP



SOUTH STRUCTURE ELEVATION



NORTH STRUCTURE ELEVATION

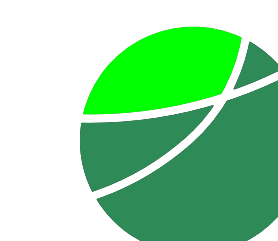
PRELIMINARY



pennsylvania
DEPARTMENT OF TRANSPORTATION

PROJECT OVERVIEW
Winter 2025

PREPARED BY:



benesch

250 Cetronia Road, Suite 150
Allentown, PA 18104
610-439-7066