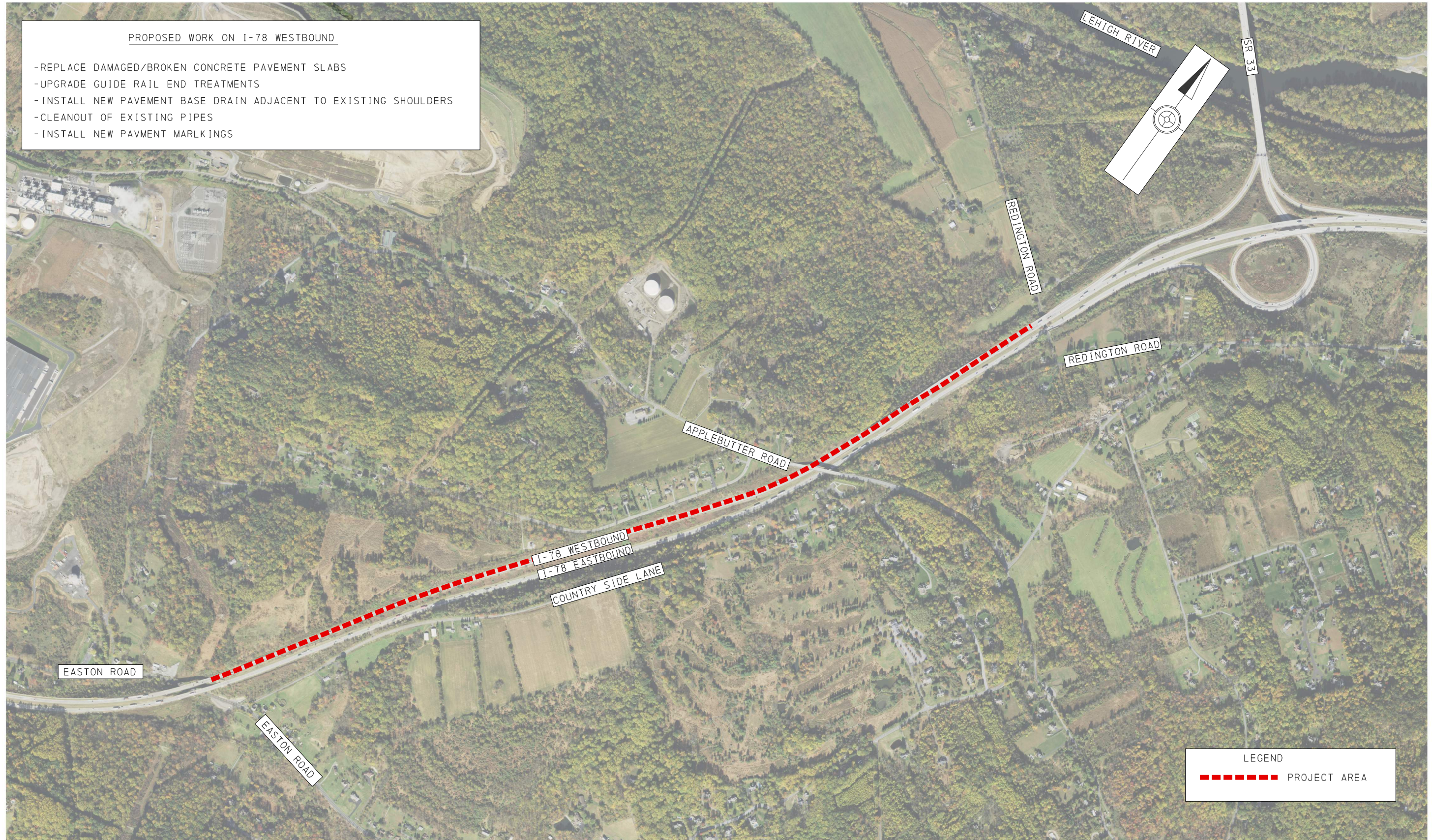


PROPOSED WORK ON I-78 WESTBOUND

- REPLACE DAMAGED/BROKEN CONCRETE PAVEMENT SLABS
- UPGRADE GUIDE RAIL END TREATMENTS
- INSTALL NEW PAVEMENT BASE DRAIN ADJACENT TO EXISTING SHOULDERS
- CLEANOUT OF EXISTING PIPES
- INSTALL NEW PAVMENT MARKINGS



pennsylvania
DEPARTMENT OF TRANSPORTATION

SR 78, SECTION 10M
CITY OF BETHLEHEM AND LOWER SAUCON TOWNSHIP
NORTHAMPTON COUNTY
PRELIMINARY

