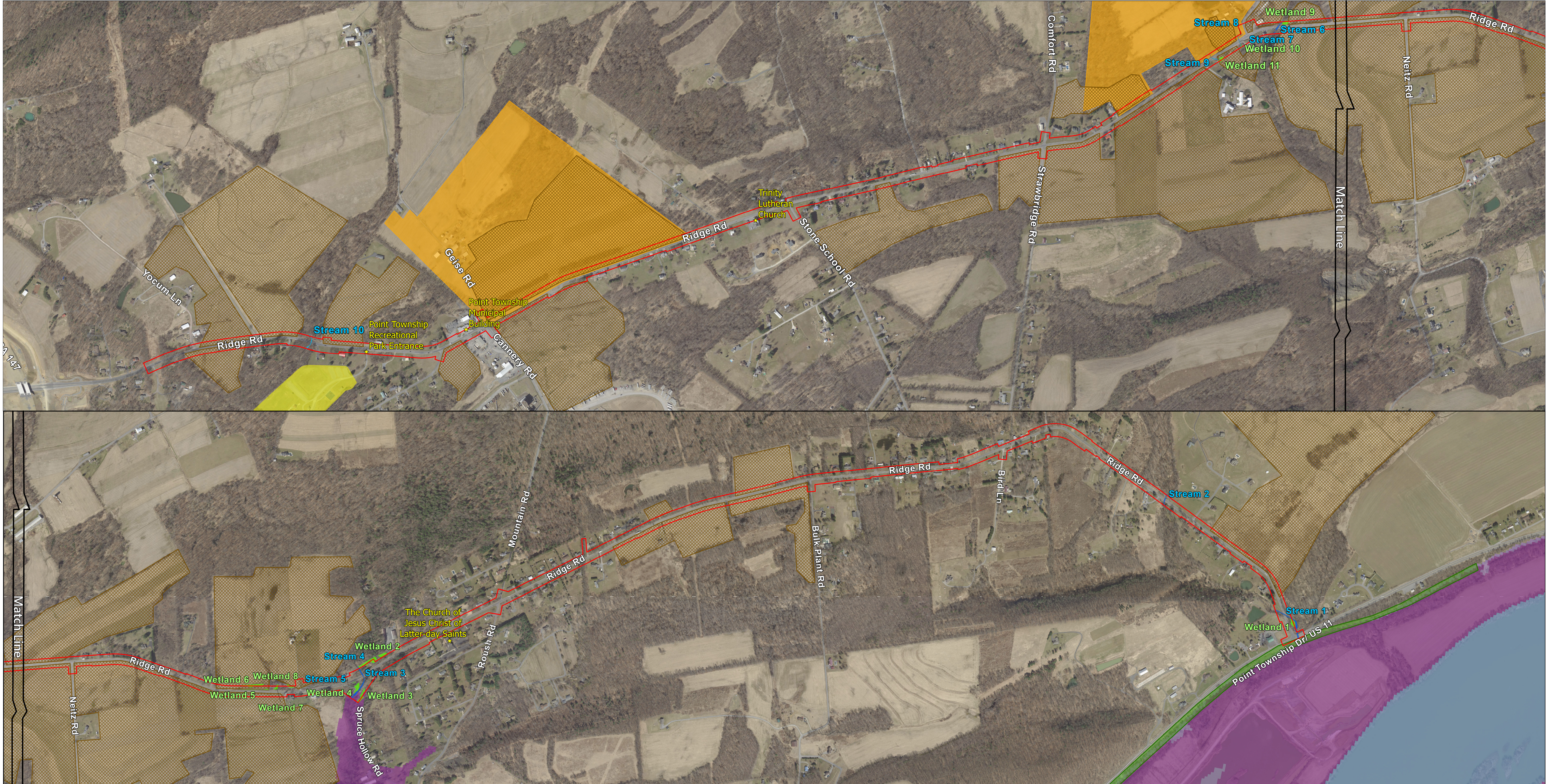
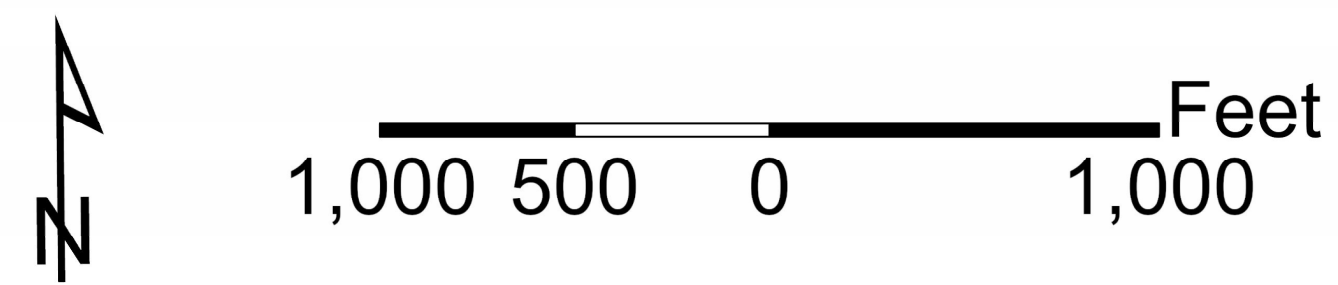


# SR 1024-88H - ENVIRONMENTAL FEATURES MAP



This map depicts key environmental features located along the project corridor. Active agricultural land was identified immediately adjacent to the project corridor based on aerial imagery. Wetlands and waterways were delineated in September 2025 by GFT environmental scientists. Other resources were identified through various online sources.



- ▬ Project Study Area
- ★ Community Facilities
- Active Farmland
- Eligible Historic Resource
- Potential Historic Resource
- Point Township Recreational Park
- Delineated Wetland
- Delineated Streams**
- Ephemeral
- Intermittent
- Perennial
- Stormwater
- FEMA Flood Zones**
- Regulatory Floodway
- 1% Annual Chance Flood Hazard
- 0.2% Annual Chance Flood Hazard