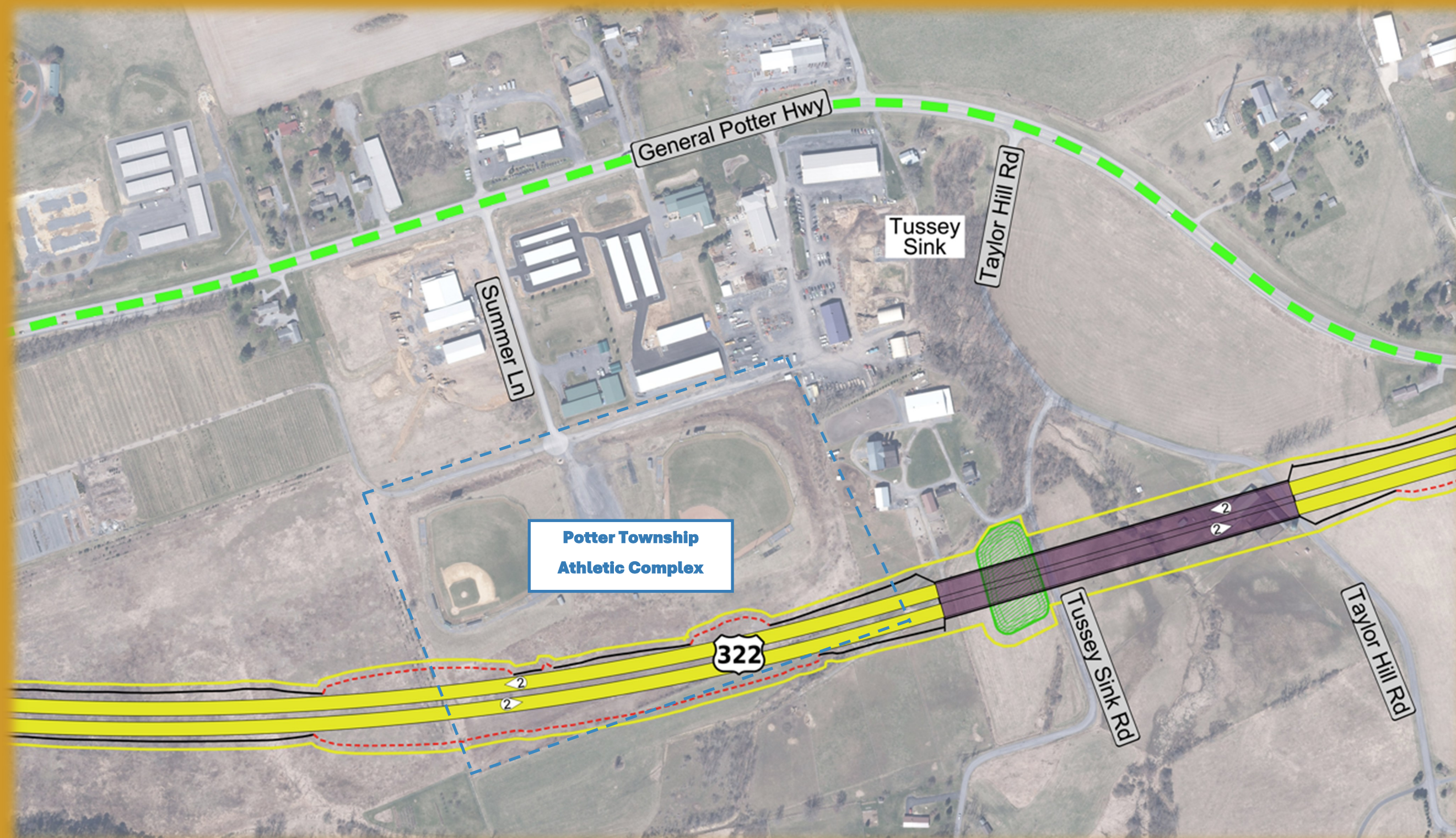


# state college area CONNECTOR



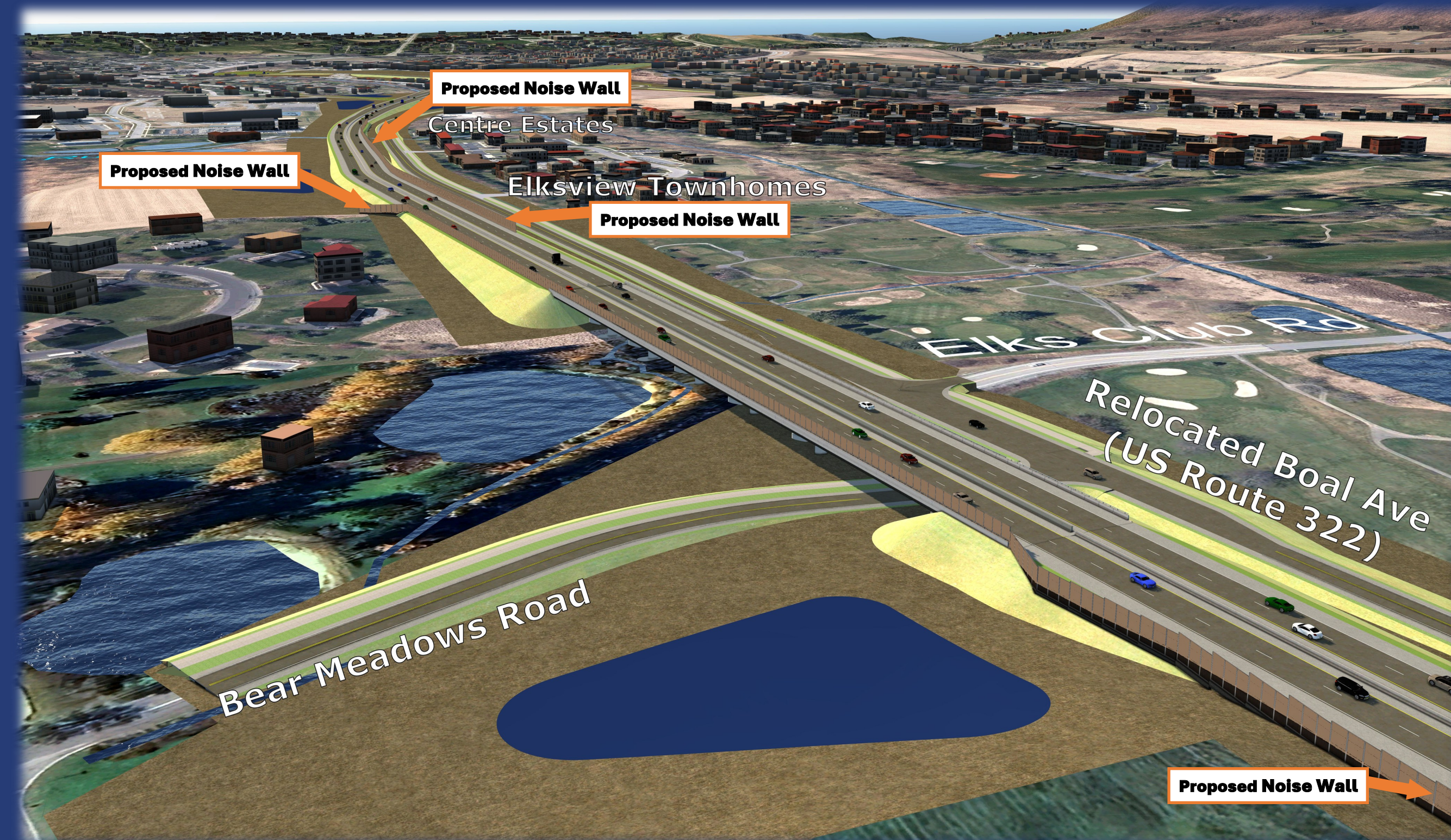
Pennsylvania  
Department of Transportation

[www.PennDOT.pa.gov/SCAC](http://www.PennDOT.pa.gov/SCAC)



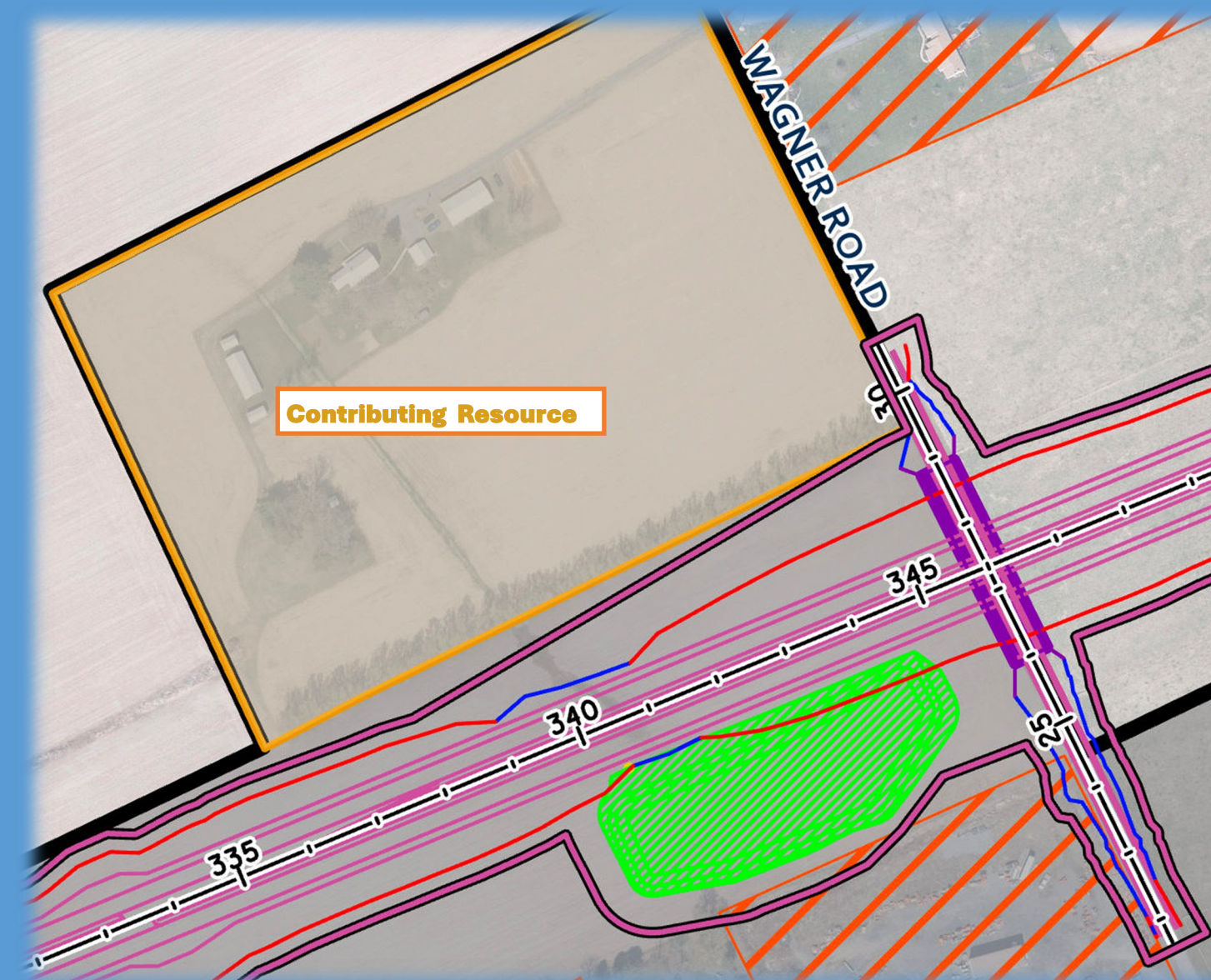
## Central Alternative Shift — Potter Township

The Central Alternative was shifted south to avoid impacting the two existing ballfields at the Potter Township Athletic Complex. This alternative impacts six acres of the Township's property. To address potential visual impacts to the complex, a visual berm is proposed as part of the project.



## All Alternatives — Harris Township

Noise walls are proposed from west of Jack's Mill Road to east of Bear Meadows Road.



## North Alternative Shift — Potter Township

The North Alternative was shifted near Wagner Road to avoid impacting a contributing resource to the Penns Valley/Brush Valley Rural Historic District.