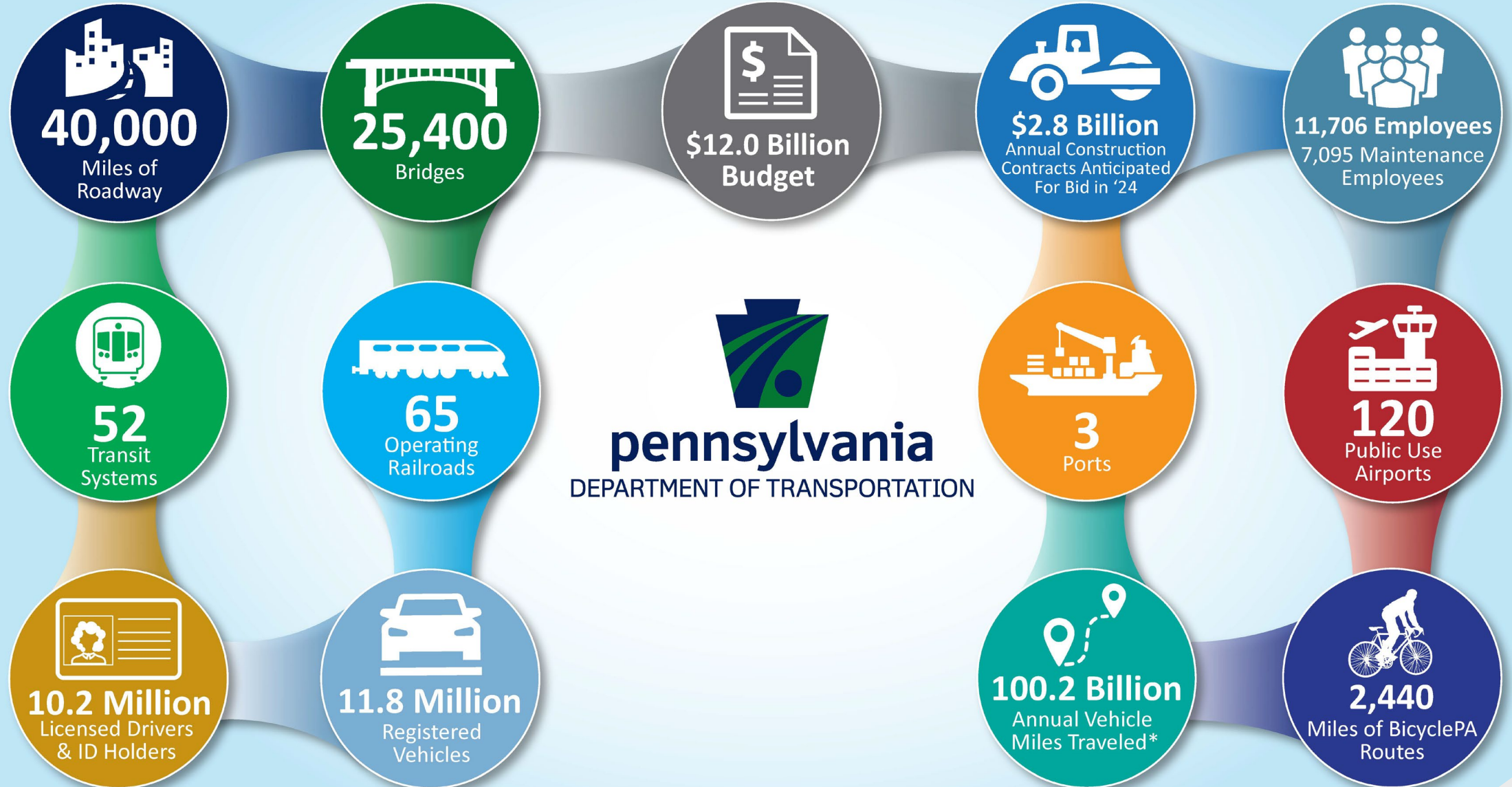


SR 3013 CRAIG ROAD BRIDGE PRESERVATION PROJECT MPMS # 117325



Pennsylvania
Department of Transportation

PENNDOT BY THE NUMBERS



*Total miles on all PA roadways



PROJECT PURPOSE

- The purpose of this project is to address identified deficiencies on the SR 3013 Craig Road Bridge located in Licking Township, Clarion County.
- The SR 3013 Craig Road Bridge spans over Licking Creek.

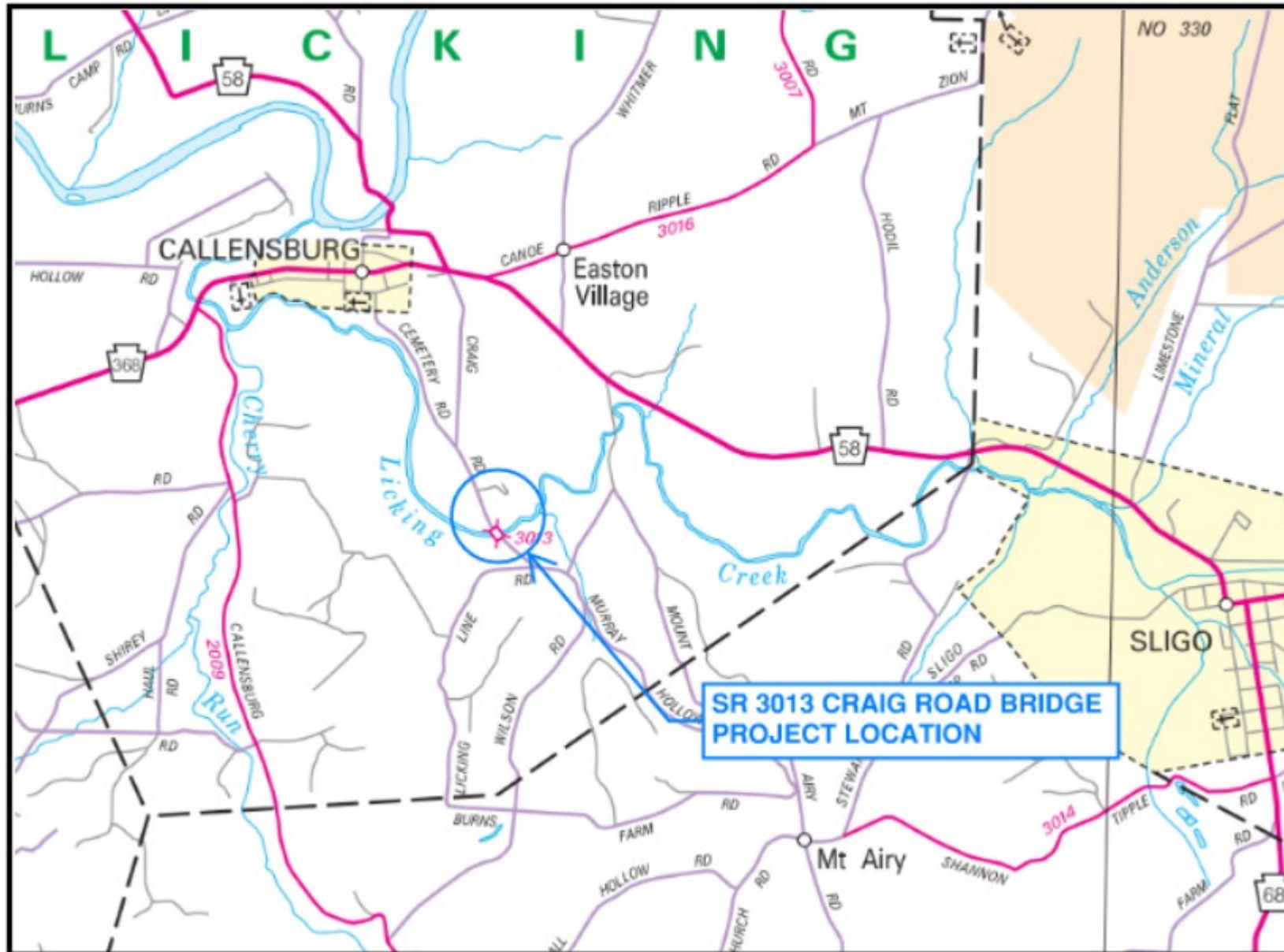


PROJECT NEEDS

- The bridge requires concrete deck repairs, scarification of the existing bridge deck, Polyester Polymer Concrete (PPC) overlay, minor substructure repairs, roadway mill and overlay at the bridge approaches and miscellaneous items to increase the service life of the existing bridge.



PROJECT LOCATION



PROJECT DETAILS

Location: Licking Township

SR 3013 Bridge carries Craig Road over Licking Creek

Currently in final design

Tentative advertisement date to contractors for bid in March 2026

Construction tentatively planned for 2026



SR 3013 Looking North



PROJECT DETAILS

Craig Road ADT is 19 vehicles

Speed limit is 55 MPH

Repairs include concrete deck repairs, bridge deck scarification, PPC overlay, minor substructure repairs and roadway mill and overlay at the bridge approaches in addition to miscellaneous item work.

No changes to the existing curb-to-curb width

Traffic maintained via detour

No utility impacts

No right-of-way impacts



West Elevation View



PROJECT PHOTOS



East Elevation View



PROJECT PHOTOS



SR 3013 Looking South



PROJECT PHOTOS



Looking South at Abutment 1



PROJECT PHOTOS



Looking East at Abutment 2



FOLLOW PENNDOT



www.PennDOT.pa.gov



www.DMV.pa.gov



[PennsylvaniaDepartmentofTransportation](#)



[PennDOTNews](#)



[PennsylvaniaDOT](#)



[PennDOTSec](#)



[/company/PennDOT](#)



[PennDOTSec](#)



[PennsylvaniaDOT](#)



Pennsylvania
Department of Transportation

QUESTIONS?

CONTACT PENNDOT PROJECT MANAGER IF
YOU HAVE ANY QUESTIONS/CONCERNS

BRANDON GABLER, PE

PHONE: 724.427.3526

EMAIL: BGABLER@PA.GOV



Pennsylvania
Department of Transportation