

## SUMMARY OF PROJECT COORDINATES

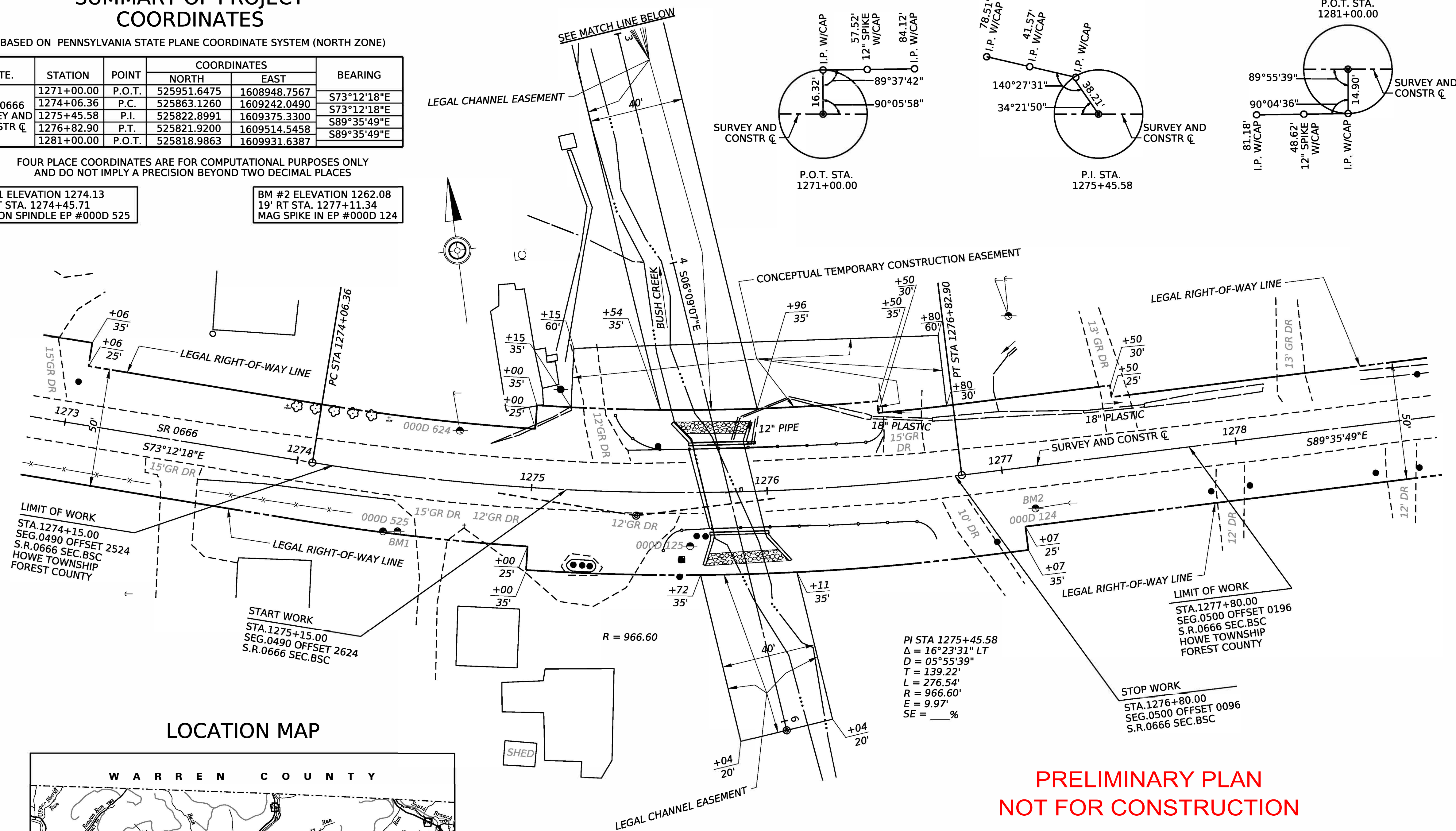
BASED ON PENNSYLVANIA STATE PLANE COORDINATE SYSTEM (NORTH ZONE)

RTE.	STATION	POINT	COORDINATES		BEARING
			NORTH	EAST	
S.R. 0666 SURVEY AND CONSTR C	1271+00.00	P.O.T.	525951.6475	1608948.7567	S73°12'18"E
	1274+06.36	P.C.	525863.1260	1609242.0490	S73°12'18"E
	1275+45.58	P.I.	525822.8991	1609375.3300	S89°35'49"E
	1276+82.90	P.T.	525821.9200	1609514.5458	S89°35'49"E
	1281+00.00	P.O.T.	525818.9863	1609931.6387	

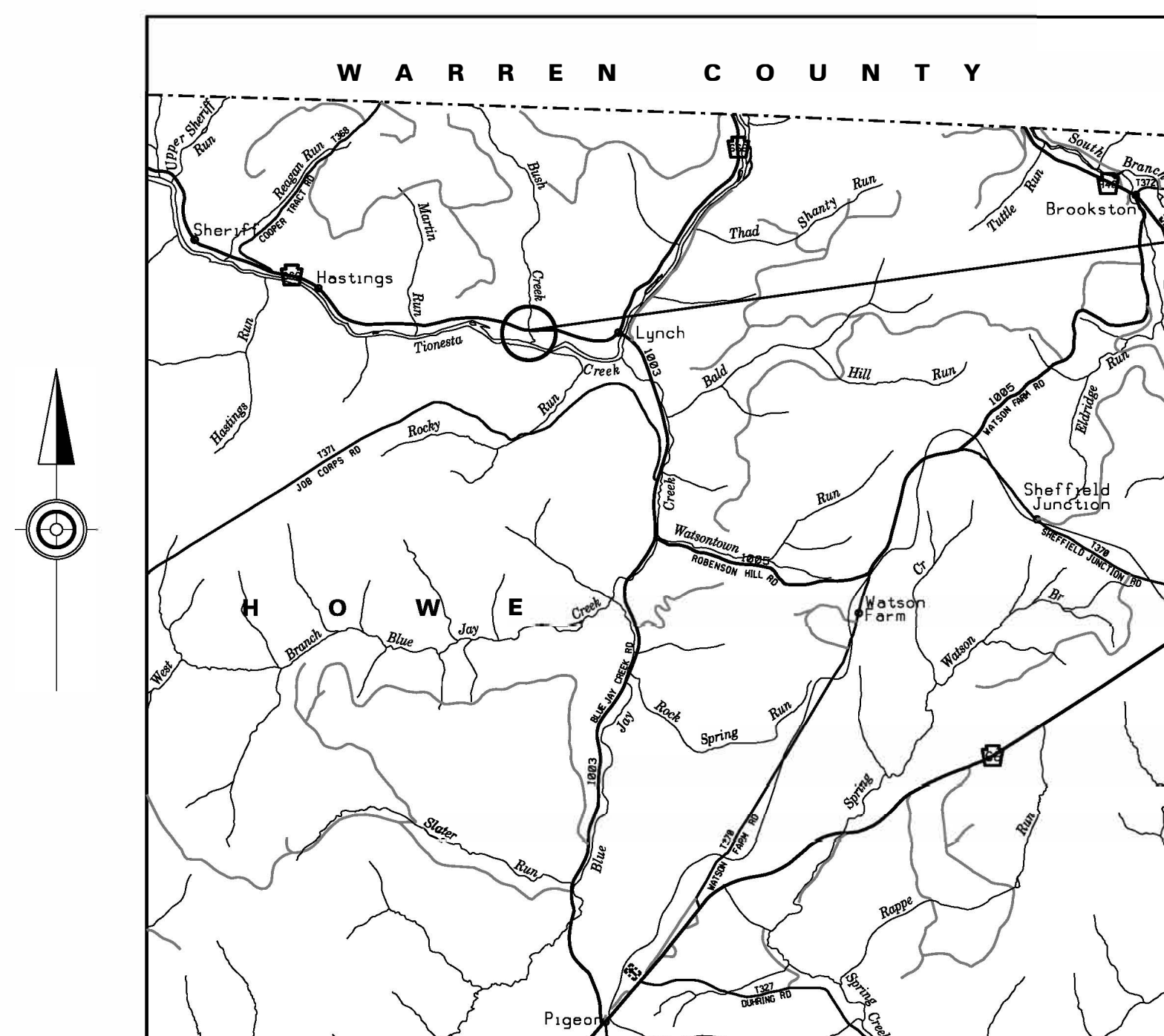
FOUR PLACE COORDINATES ARE FOR COMPUTATIONAL PURPOSES ONLY  
AND DO NOT IMPLY A PRECISION BEYOND TWO DECIMAL PLACES

BM #1 ELEVATION 1274.13  
24' RT STA. 1274+45.71  
COTTON SPINDLE EP #000D 525

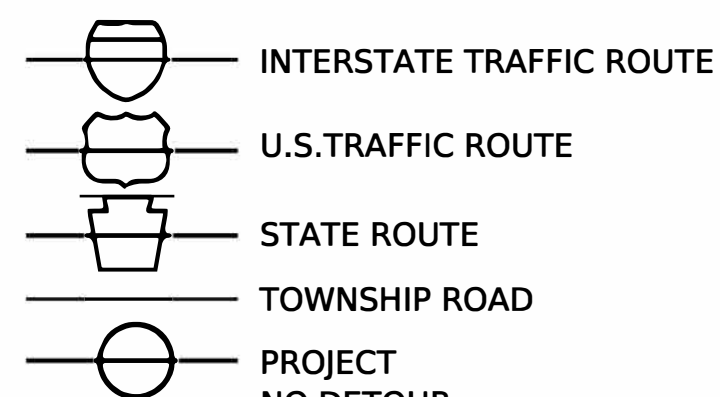
BM #2 ELEVATION 1262.08  
19' RT STA. 1277+11.34  
MAG SPIKE IN EP #000D 124



## LOCATION MAP



## LEGEND



## SCALE

0 0.5 1 2 3 MILES

SCALE  
HORIZONTAL



PRELIMINARY PLAN  
NOT FOR CONSTRUCTION

# CONCEPTUAL REQUIRED TEMPORARY CONSTRUCTION EASEMENT OFFSET COORDINATES

BASED ON PENNSYLVANIA STATE PLANE COORDINATE  
SYSTEM (NORTH ZONE)

STATION	OFFSET	COORDINATES	
		NORTH	EAST
1275+15.00	35.00 LT	525872.0696	1609353.8897
1275+15.00	60.00 LT	525896.6624	1609358.3834
1276+80.00	60.00 LT	525881.9417	1609512.2509
1276+80.00	30.00 LT	525851.9432	1609511.9500
1276+50.00	30.00 LT	525852.6857	1609482.8918
1276+50.00	35.00 LT	525857.6815	1609483.0970

FOUR PLACE COORDINATES ARE FOR COMPUTATIONAL PURPOSES ONLY  
AND DO NOT IMPLY A PRECISION BEYOND TWO DECIMAL PLACES

## GENERAL NOTES

LEGAL RIGHT-OF-WAY DATA:

S.R. 0666 PREVIOUSLY KNOWN AS L.R.00253.

THE LEGAL RIGHT-OF-WAY ON S.R.0666, FORMERLY KNOWN AS L.R. 00253, FROM STATION 1274+15.00 TO STATION 1277+80.00 VARIES IN WIDTH FROM FIFTY (50) FEET TO SEVENTY (70) FEET IN WIDTH BASED ON PLAN L.R.00253-1R SIGNED BY GOVERNOR DAVID LAWRENCE ON OCTOBER 30, 1962 AND RECORDED IN MAP BOOK 2, PAGE 1 ON FEBRUARY 21, 1963.

**THERE ARE NO NAVIGABLE STREAMS ON THIS PROJECT.**

CHANNEL EASEMENT. AN EASEMENT FOR THE CONSTRUCTION, INSPECTION, MAINTENANCE, REPAIR, RECONSTRUCTION AND ALTERATION OF THE COURSE OF THE CHANNEL. THE EASEMENT SHALL NOT PREVENT THE PROPERTY OWNER FROM MAKING ANY LEGAL USE OF THE AREA WHICH IS NOT DETRIMENTAL TO THE NECESSARY FLOW OF WATER.

TEMPORARY CONSTRUCTION EASEMENT. AN EASEMENT TO USE THE LAND AS NECESSARY DURING CONSTRUCTION OF THE PROJECT. THE EASEMENT IS REQUIRED ONLY UNTIL THE CONSTRUCTION OR WORK INDICATED BY THE PLAN IS COMPLETED, UNLESS SOONER RELINQUISHED IN WRITING BY THE DEPARTMENT.

ACCESS TO ALL PROPERTIES AFFECTED BY THIS PROJECT SHALL BE MAINTAINED DURING CONSTRUCTION, UNLESS EXPRESSLY STATED OTHERWISE WITHIN THIS PLAN.

THE VERTICAL CONTROL IS BASED UPON THE NORTH AMERICAN VERTICAL DATUM OF 1988 (NAVD 88).

THE PROJECT IS TIED TO THE PENNSYLVANIA STATE PLANE COORDINATE SYSTEM ZONE NORTH NAD 83(2011). A SCALE FACTOR OF 0.99990643 WAS USED FOR THIS PROJECT.

ALL WORK IS TO BE PERFORMED ON PRIVATE PROPERTY. NO WORK  
WILL BE PERFORMED ON UNITED STATES NATIONAL FOREST PROPERTY.

CONSTRUCTION PA ONE CALL INFORMATION IS AS FOLLOWS:

THREE TO TEN WORKING DAYS PRIOR TO EXCAVATION, BASED ON THE COMPLEXITY OF THE PROJECT, THE CONTRACTOR MUST CONTACT THE PA ONE CALL SYSTEM, INC. AT 1-800-242-1776.

SERIAL NO: \_\_\_\_\_ FOR HOWE TOWNSHIP/  
FOREST COUNTY

ADDITIONAL INFORMATION IS AVAILABLE AT  
<http://www.pa1call.org/PA811/Public/>.

THE CONTRACTOR IS REQUIRED TO NOTIFY THE DEPARTMENT AND  
SUBMIT AN ALLEGED VIOLATION REPORT (AVR) TO THE PA PUBLIC  
UTILITY COMMISSION THROUGH THE PA ONE CALL SYSTEM,  
WWW.PA1CALL.ORG, WITHIN TEN (10) BUSINESS DAYS AFTER A UTILITY  
LINE IS STRUCK, DAMAGED, OR PREVIOUS DAMAGE IS DISCOVERED AS  
REQUIRED BY PENNSYLVANIA'S UNDERGROUND UTILITY LINE  
PROTECTION LAW ACT 50 (P.L.852, NO. 287 AMENDED OCT.30,2017).

## PUBLIC UTILITIES

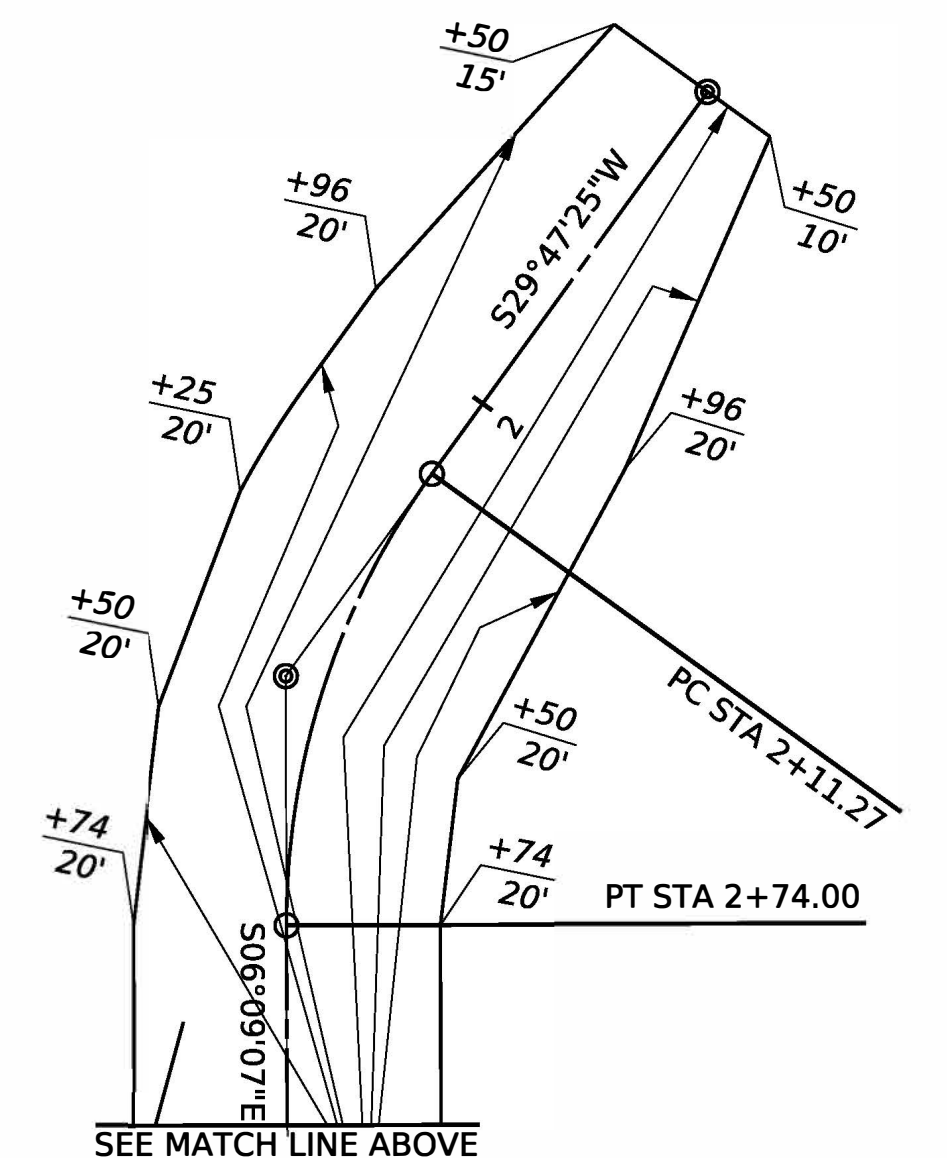
DESIGN PA ONE CALL INFORMATION IS AS FOLLOWS:

PA ONE CALL SYSTEM INC. PHONE NO.-1-800-242-1776

PRELIMINARY DESIGN  
SERIAL NO. 20252540354    HOWE TOWNSHIP/ FOREST COUNTY

DISTRICT	COUNTY	ROUTE	SECTION	SHEET	
1-0	FOREST	0666	BSC	1 OF 1	
HOWE TOWNSHIP					
REV NO	REVISIONS		DATE	BY	APPD

27-0666-0500-0000 MPMS 123095



SURVEY BOOK 20765