

OPERATOR: jljones  
FILE NAME: pw://PDEDPRAPPW01.penn.dot.icl:Connect\_Pjprojects/Documents/OpenRoads/Projects/D01/20-Crawford/20 0285 BSC (74646)/DESIGN/Roadway/CADD Files/27-0666-0220-0000/270666BSC\_PLAN.dgnPLOTTED: 5-JAN-2026 08:56

## SUMMARY OF PROJECT COORDINATES

BASED ON PENNSYLVANIA STATE PLANE COORDINATE SYSTEM (NORTH ZONE)

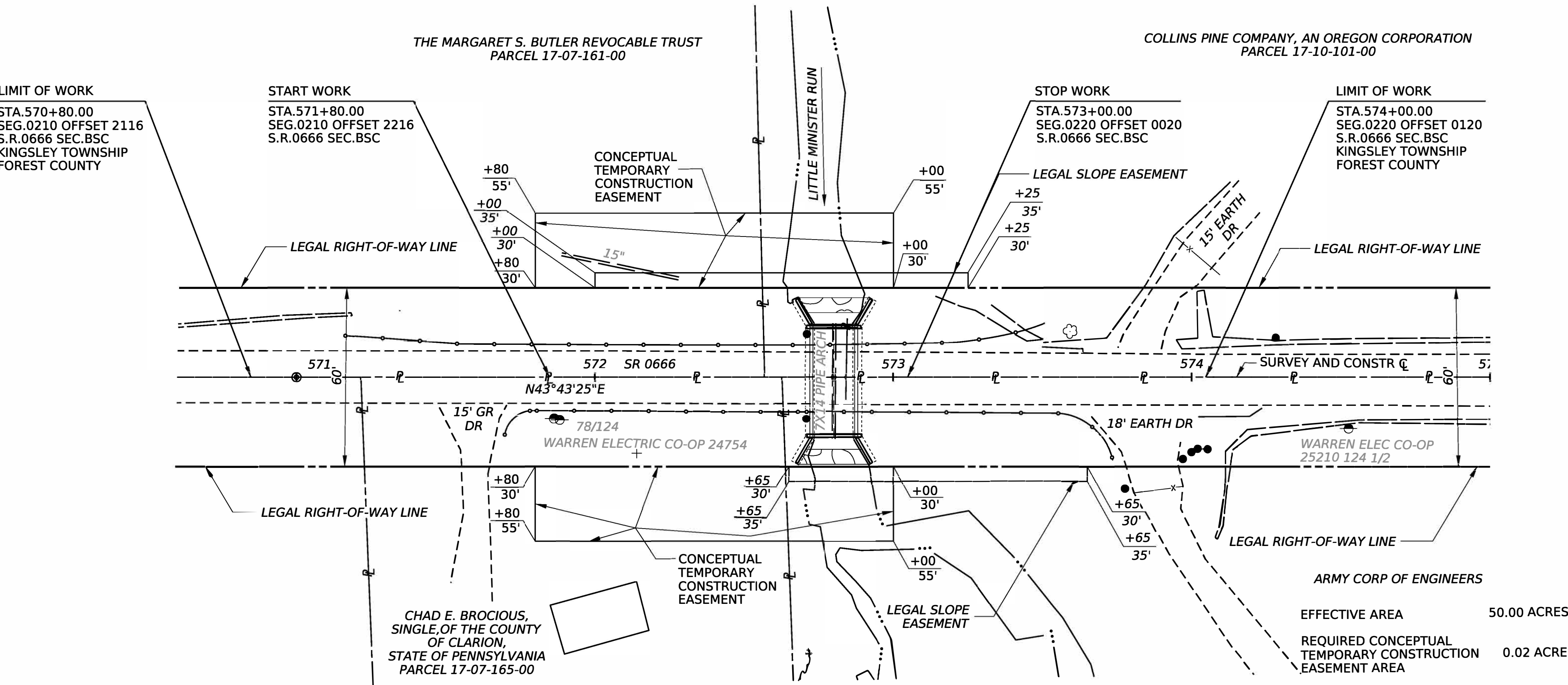
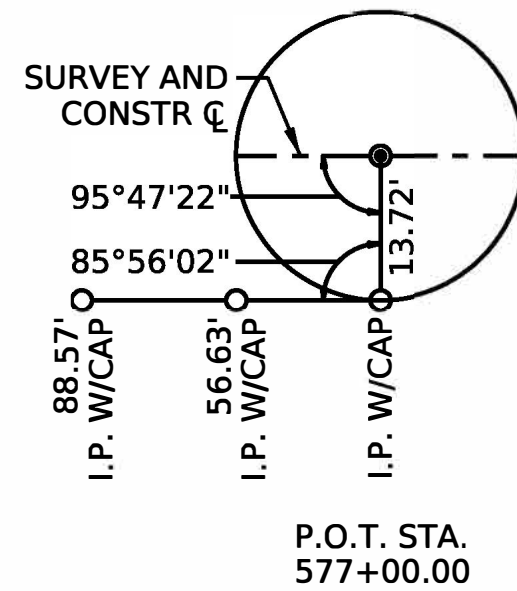
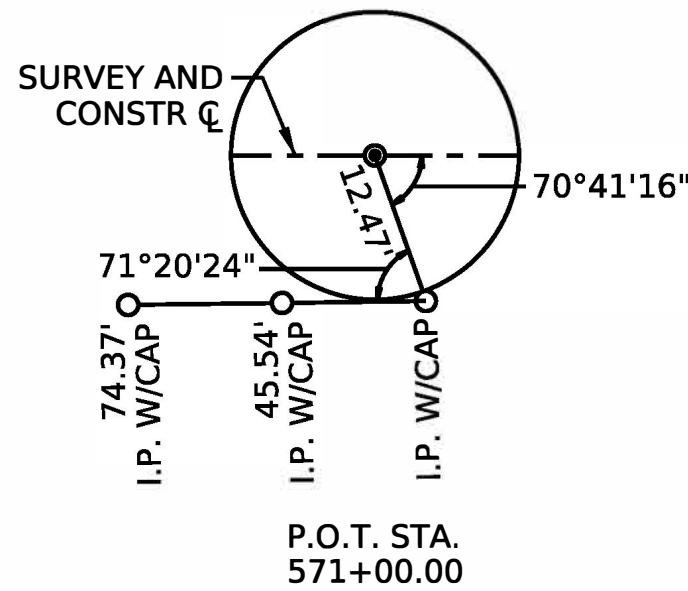
RTE.	STATION	POINT	COORDINATES		BEARING
			NORTH	EAST	
S.R. 0666	571+00.00	P.O.T	507969.3636	1557829.2706	N43°43'25"E
SURVEY AND CONSTR C	572+80.00	P.O.T.	508099.4464	1557953.6830	N43°43'25"E
	577+00.00	P.O.T	508402.9731	1558243.9787	

FOUR PLACE COORDINATES ARE FOR COMPUTATIONAL PURPOSES ONLY  
AND DO NOT IMPLY A PRECISION BEYOND TWO DECIMAL PLACES

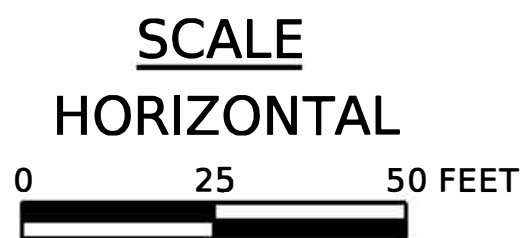
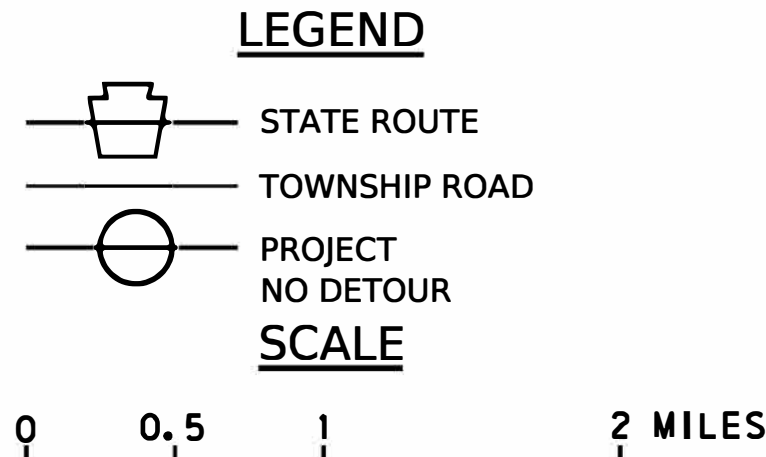
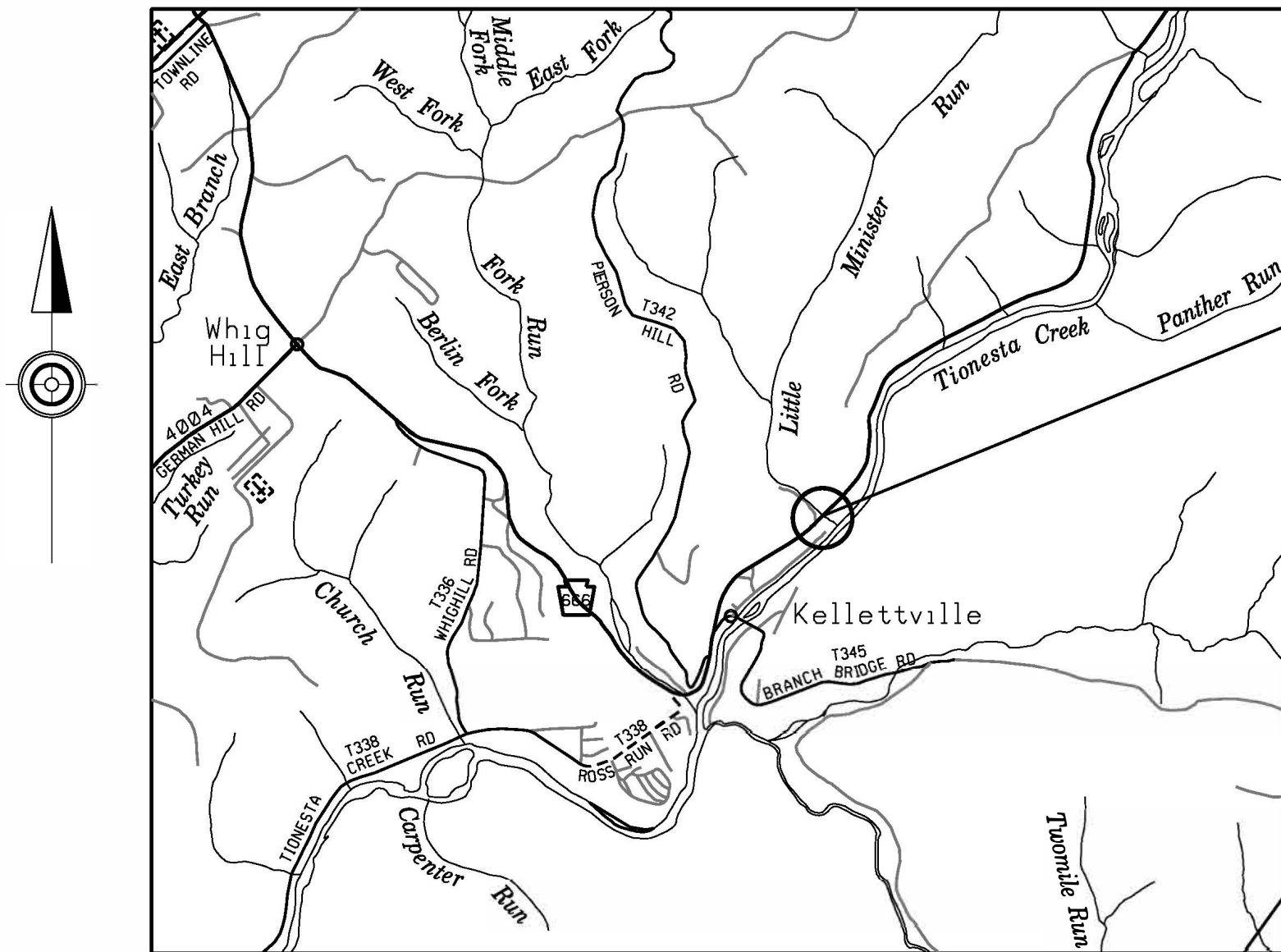
BM #1 ELEVATION 1172.35  
14' RT STA. 571+86  
COTTON SPINDLE IN EP #4024754

BM #2 ELEVATION 1178.48  
17' RT STA. 574+52  
MAG SPIKE IN EP #124 1/2

BM #3 ELEVATION 1169.03  
20.6' RT STA. 572+72  
BRASS DISC IN SE CORNER OF BRIDGE  
ON THE TOP OF THE AW



## LOCATION MAP



## CONCEPTUAL REQUIRED TEMPORARY CONSTRUCTION EASEMENT OFFSET COORDINATES

BASED ON PENNSYLVANIA STATE PLANE COORDINATE SYSTEM (NORTH ZONE)

STATION	OFFSET	COORDINATES	
		NORTH	EAST
571+80.00	30.00 LT	508047.9136	1557862.8845
571+80.00	55.00 LT	508065.1931	1557844.8175
573+00.00	55.00 LT	508151.9150	1557927.7591
573+00.00	30.00 LT	508134.8541	1557945.6922
571+80.00	30.00 RT	508006.4428	1557906.2455
571+80.00	55.00 RT	507989.1633	1557924.3126
573+00.00	55.00 RT	508075.8852	1558007.2542
573+00.00	30.00 RT	508093.1647	1557989.1871

FOUR PLACE COORDINATES ARE FOR COMPUTATIONAL PURPOSES ONLY  
AND DO NOT IMPLY A PRECISION BEYOND TWO DECIMAL PLACES

SURVEY BOOK 20766

DISTRICT	COUNTY	ROUTE	SECTION	SHEET
1-0	FOREST	0666	BSC	1 OF 1
KINGSLEY TOWNSHIP				
REV NO	REVISIONS		DATE	BY APPD

27-0666-0220-0000 MPMS 117571

PRELIMINARY PLAN  
NOT FOR CONSTRUCTION

## GENERAL NOTES

LEGAL RIGHT-OF-WAY DATA:

S.R. 0666 PREVIOUSLY KNOWN AS L.R.00253.

THE LEGAL RIGHT-OF-WAY ON S.R.0666, FORMERLY KNOWN AS L.R. 00253, FROM STATION 571+00.00 TO STATION 577+00.00 IS SIXTY (60) FEET IN WIDTH BASED ON PLAN L.R.27009, 253 SIGNED BY GOVERNOR ARTHUR JAMES ON FEBRUARY 14, 1941.

PRIVATE PROPERTY LINES ARE PLOTTED FROM THE DEED OF RECORD, RECORDED SUBDIVISION OR LOT PLANS, EXISTING TOPOGRAPHICAL FEATURES AND LIMITED FIELD DATA. PRIVATE PROPERTY LINES WERE NOT SURVEYED BY THE PROFESSIONAL LAND SURVEYOR RESPONSIBLE FOR THE PROJECT.

THERE ARE NO NAVIGABLE STREAMS ON THIS PROJECT.

SLOPE EASEMENT. AN EASEMENT FOR THE SUPPORT AND PROTECTION OF THE HIGHWAY. INCLUDING THE RIGHT TO CONSTRUCT, INSPECT, MAINTAIN, REPAIR, RECONSTRUCT, AND ALTER DRAINAGE FACILITIES AND THE CONTOUR OF THE LAND. THE EASEMENT SHALL NOT PREVENT THE PROPERTY OWNER FROM MAKING ANY LEGAL USE OF THE AREA WHICH IS NOT DETRIMENTAL TO THE NECESSARY SUPPORT AND PROTECTION OF THE HIGHWAY RIGHT-OF-WAY AND THE SAFETY OF THE TRAVELING PUBLIC.

TEMPORARY CONSTRUCTION EASEMENT. AN EASEMENT TO USE THE LAND AS NECESSARY DURING CONSTRUCTION OF THE PROJECT. THE EASEMENT IS REQUIRED ONLY UNTIL THE CONSTRUCTION OR WORK INDICATED BY THE PLAN IS COMPLETED, UNLESS SOONER RELINQUISHED IN WRITING BY THE DEPARTMENT.

THE VERTICAL CONTROL IS BASED UPON THE NORTH AMERICAN VERTICAL DATUM OF 1988 (NAVD 88).

THE PROJECT IS TIED TO THE PENNSYLVANIA STATE PLANE COORDINATE SYSTEM ZONE NORTH NAD 83(2011). A SCALE FACTOR OF 0.999908612 WAS USED FOR THIS PROJECT.

CONSTRUCTION PA ONE CALL INFORMATION IS AS FOLLOWS:

THREE TO TEN WORKING DAYS PRIOR TO EXCAVATION, BASED ON THE COMPLEXITY OF THE PROJECT, THE CONTRACTOR MUST CONTACT THE PA ONE CALL SYSTEM, INC. AT 1-800-242-1776.  
SERIAL NO: FOR KINGSLEY TOWNSHIP/  
FOREST COUNTY

ADDITIONAL INFORMATION IS AVAILABLE AT  
<http://www.pa1call.org/PA811/Public/>.

THE CONTRACTOR IS REQUIRED TO NOTIFY THE DEPARTMENT AND SUBMIT AN ALLEGED VIOLATION REPORT (AVR) TO THE PA PUBLIC UTILITY COMMISSION THROUGH THE PA ONE CALL SYSTEM, WWW.PA1CALL.ORG, WITHIN TEN (10) BUSINESS DAYS AFTER A UTILITY LINE IS STRUCK, DAMAGED, OR PREVIOUS DAMAGE IS DISCOVERED AS REQUIRED BY PENNSYLVANIA'S UNDERGROUND UTILITY LINE PROTECTION LAW ACT 50 (P.L.852, NO. 287 AMENDED OCT.30,2017).

## PUBLIC UTILITIES

DESIGN PA ONE CALL INFORMATION IS AS FOLLOWS:  
PA ONE CALL SYSTEM INC. PHONE NO.-1-800-242-1776

PRELIMINARY DESIGN  
SERIAL NO. 20252533984 KINGSLEY TOWNSHIP/  
FOREST COUNTY