

OPERATOR: jljones  
FILE NAME: pw:/PDEDPRAPPW01.penn.dot\c:\connect\_projects\Documents\OpenRoads\_Projects\Roadway\20 0285 BSC (74646)\DESIGN\Roadway\CADD Files\27-0036-0170-1709\270036BSC\_PLAN.dgnPLOTTED: 17-DEC-2025 10:03

## SUMMARY OF PROJECT COORDINATES

BASED ON PENNSYLVANIA STATE PLANE COORDINATE SYSTEM (NORTH ZONE)

RTE.	STATION	POINT	COORDINATES		BEARING
			NORTH	EAST	
S.R. 0036 SURVEY AND CONSTR C	38+00.00	P.O.T.	490207.3895	1498469.1693	N53°57'10"W
	41+05.94	P.C.	490387.4205	1498221.8069	N53°57'10"W
	46+34.69	P.I.	490698.5657	1497794.2937	N23°00'23"W
	51+37.61	P.T.	491185.2622	1497587.6406	N23°00'23"W
	53+00.00	P.O.T.	491334.7361	1497524.1735	N23°00'23"W

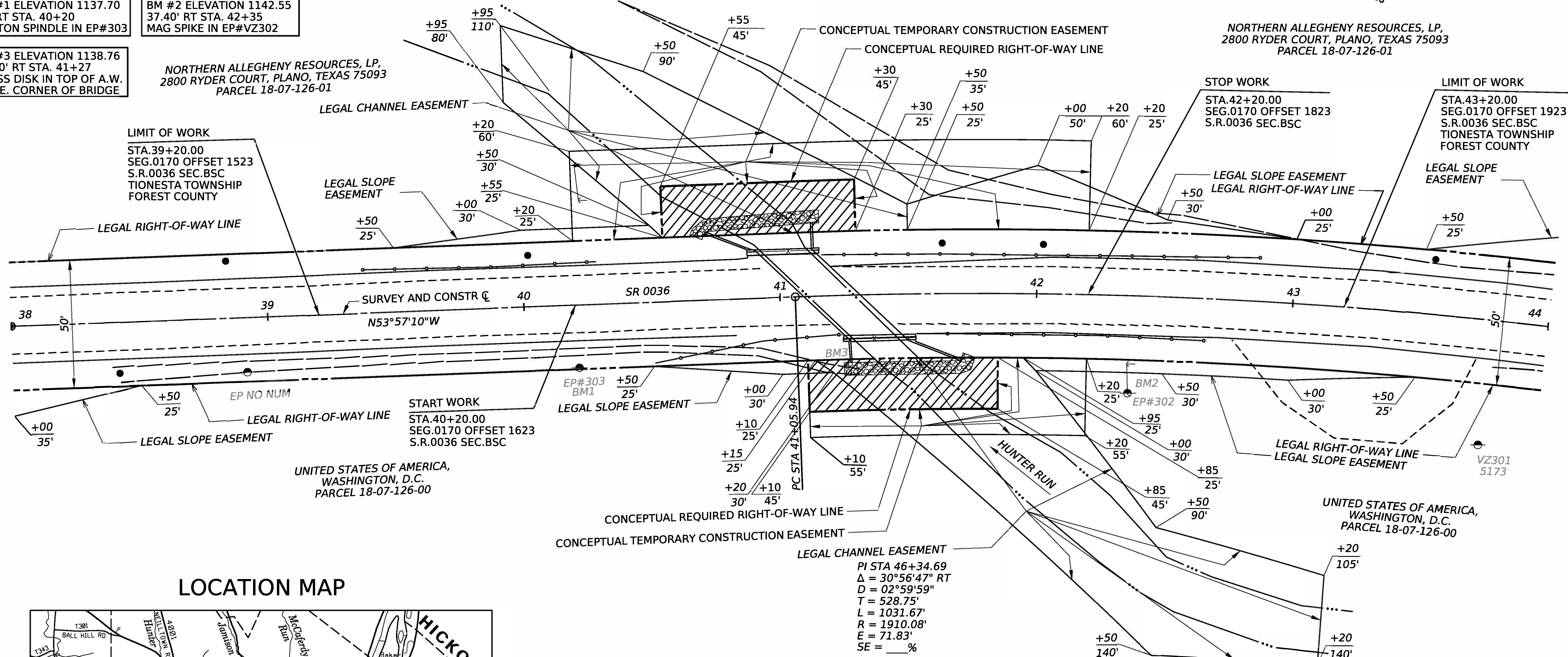
FOUR PLACE COORDINATES ARE FOR COMPUTATIONAL PURPOSES ONLY  
AND DO NOT IMPLY A PRECISION BEYOND TWO DECIMAL PLACES

BM #1 ELEVATION 1137.70  
24' RT STA. 40+20  
COTTON SPINDLE IN EP#303

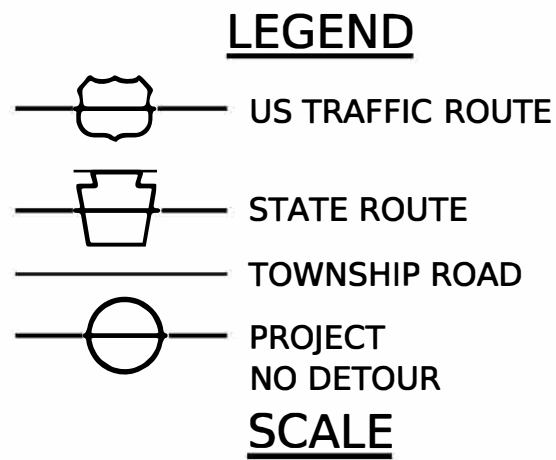
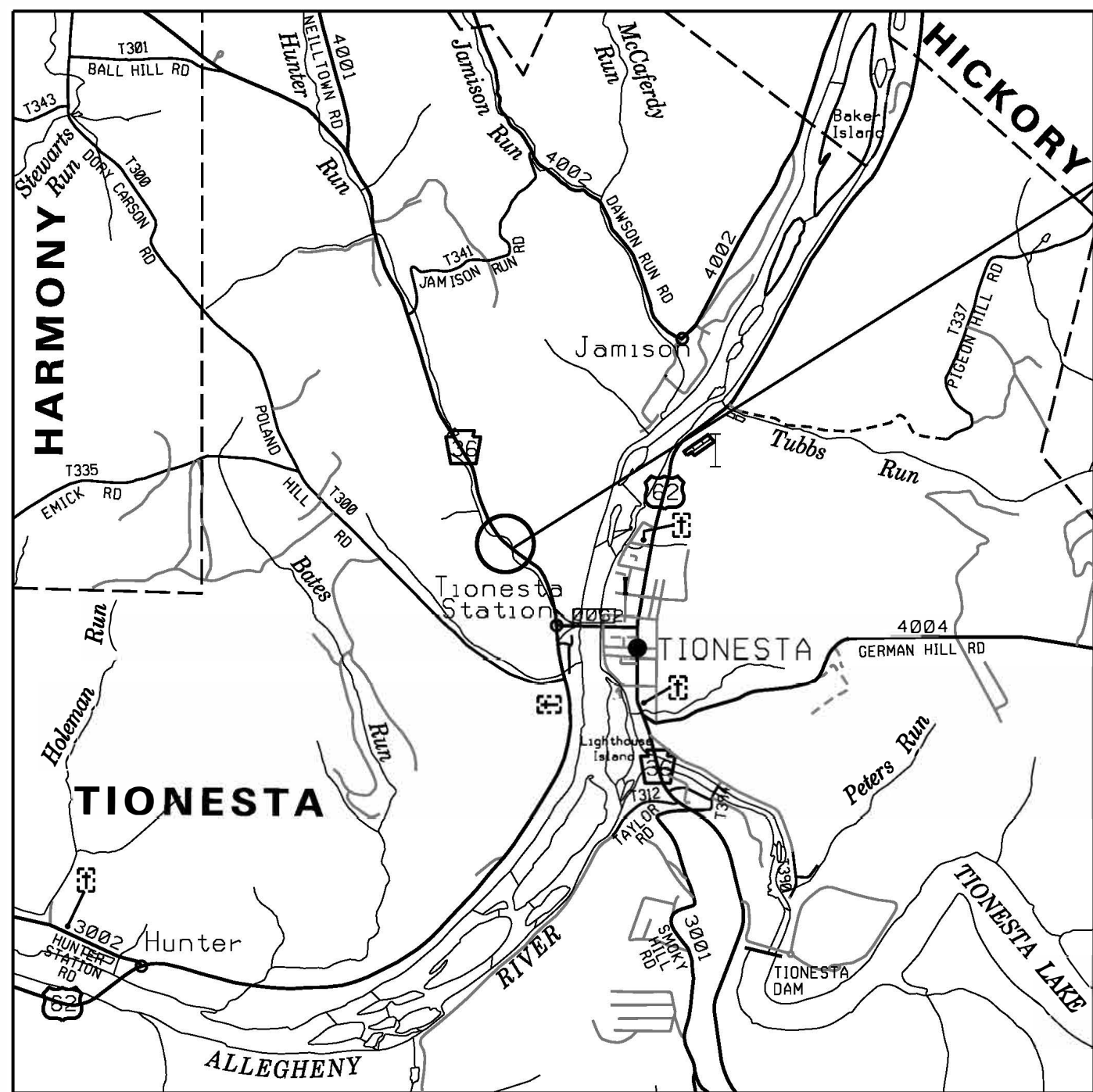
BM #2 ELEVATION 1142.55  
37.40' RT STA. 42+35  
MAG SPIKE IN EP#VZ302

BM #3 ELEVATION 1138.76  
18.40' RT STA. 41+27  
BRASS DISK IN TOP OF A.W.  
IN S.E. CORNER OF BRIDGE

NORTHERN ALLEGHENY RESOURCES, LP,  
2800 RYDER COURT, PLANO, TEXAS 75093  
PARCEL 18-07-126-01



## LOCATION MAP



0 0.5 1 2 MILES

## CONCEPTUAL REQUIRED RIGHT-OF-WAY OFFSET COORDINATES

BASED ON PENNSYLVANIA STATE PLANE COORDINATE SYSTEM (NORTH ZONE)

STATION	OFFSET	COORDINATES	
		NORTH	EAST
40+55.00	25.00 LT	490337.2314	1498248.2823
40+55.00	45.00 LT	490321.0608	1498236.5132
41+30.00	45.00 LT	490365.6532	1498175.5068
41+30.00	25.00 LT	490381.6744	1498187.4786
41+10.00	25.00 RT	490409.9951	1498233.2811
41+10.00	45.00 RT	490426.1406	1498245.0845
41+85.00	45.00 RT	490470.5100	1498186.8285
41+85.00	25.00 RT	490454.8402	1498174.4004

FOUR PLACE COORDINATES ARE FOR COMPUTATIONAL PURPOSES ONLY  
AND DO NOT IMPLY A PRECISION BEYOND TWO DECIMAL PLACES

**SCALE**  
HORIZONTAL

0 25 50 FEET

## CONCEPTUAL REQUIRED TEMPORARY CONSTRUCTION EASEMENT OFFSET COORDINATES

BASED ON PENNSYLVANIA STATE PLANE COORDINATE SYSTEM (NORTH ZONE)

STATION	OFFSET	COORDINATES	
		NORTH	EAST
40+20.00	25.00 LT	490316.6356	1498276.5809
40+20.00	60.00 LT	490288.3370	1498255.9851
42+20.00	60.00 LT	490410.9337	1498093.5046
42+20.00	25.00 LT	490437.9528	1498115.7526
41+30.00	25.00 LT	490381.6744	1498187.4786
41+30.00	45.00 LT	490365.6532	1498175.5068
40+55.00	45.00 LT	490321.0608	1498236.5132
40+55.00	25.00 LT	490337.2314	1498248.2823
41+10.00	45.00 RT	490426.1406	1498245.0845
41+10.00	55.00 RT	490434.2134	1498250.9861
42+20.00	55.00 RT	490499.7106	1498166.6050
42+20.00	25.00 RT	490476.5514	1498147.5353
41+85.00	25.00 RT	490454.8402	1498174.4004
41+85.00	45.00 RT	490470.5100	1498186.8285

FOUR PLACE COORDINATES ARE FOR COMPUTATIONAL PURPOSES ONLY  
AND DO NOT IMPLY A PRECISION BEYOND TWO DECIMAL PLACES



SURVEY BOOK 20771

DISTRICT	COUNTY	ROUTE	SECTION	SHEET		
1-0	FOREST	0036	BSC	1	OF 1	
TIONESTA TOWNSHIP						
REV NO	REVISIONS			DATE	BY	APPD

27-0036-0170-1709 MPMS 123094

**PRELIMINARY PLAN  
NOT FOR CONSTRUCTION**

## GENERAL NOTES

LEGAL RIGHT-OF-WAY DATA:

S.R. 0036 PREVIOUSLY KNOWN AS L.R.00511.

THE LEGAL RIGHT-OF-WAY ON S.R.0036, FORMERLY KNOWN AS L.R. 00511, FROM STATION 38+00.00 TO STATION 44+00.00 IS FIFTY (50) FEET IN WIDTH BASED ON PLAN OF LR 511-1R, 27002-1R, SIGNED BY GOVERNOR GEORGE LEADER ON MARCH 5, 1958 AND RECORDED IN RIGHT-OF-WAY BOOK VOLUME 1, PAGE 17 ON APRIL 30, 1958.

SLOPE EASEMENT. AN EASEMENT FOR THE SUPPORT AND PROTECTION OF THE HIGHWAY. INCLUDING THE RIGHT TO CONSTRUCT, INSPECT, MAINTAIN, REPAIR, RECONSTRUCT, AND ALTER DRAINAGE FACILITIES AND THE CONTOUR OF THE LAND. THE EASEMENT SHALL NOT PREVENT THE PROPERTY OWNER FROM MAKING ANY LEGAL USE OF THE AREA WHICH IS NOT DETRIMENTAL TO THE NECESSARY SUPPORT AND PROTECTION OF THE HIGHWAY RIGHT-OF-WAY AND THE SAFETY OR THE TRAVELING PUBLIC.

CHANNEL EASEMENT. AN EASEMENT FOR THE CONSTRUCTION, INSPECTION, MAINTENANCE, REPAIR, RECONSTRUCTION AND ALTERATION OF THE COURSE OF THE CHANNEL. THE EASEMENT SHALL NOT PREVENT THE PROPERTY OWNER FROM MAKING ANY LEGAL USE OF THE AREA WHICH IS NOT DETRIMENTAL TO THE NECESSARY FLOW OF WATER.

TEMPORARY CONSTRUCTION EASEMENT. AN EASEMENT TO USE THE LAND AS NECESSARY DURING CONSTRUCTION OF THE PROJECT. THE EASEMENT IS REQUIRED ONLY UNTIL THE CONSTRUCTION OR WORK INDICATED BY THE PLAN IS COMPLETED, UNLESS SOONER RELINQUISHED IN WRITING BY THE DEPARTMENT.

THERE ARE NO NAVIGABLE STREAMS ON THIS PROJECT.

ACCESS TO ALL PROPERTIES AFFECTED BY THIS PROJECT SHALL BE MAINTAINED DURING CONSTRUCTION, UNLESS EXPRESSLY STATED OTHERWISE WITHIN THIS PLAN.

THE VERTICAL CONTROL IS BASED UPON THE NORTH AMERICAN VERTICAL DATUM OF 1988 (NAVD 88).

THE PROJECT IS TIED TO THE PENNSYLVANIA STATE PLANE COORDINATE SYSTEM ZONE NORTH NAD 83(2011). A SCALE FACTOR OF 0.99990816 WAS USED FOR THIS PROJECT.

CONSTRUCTION PA ONE CALL INFORMATION IS AS FOLLOWS:

THREE TO TEN WORKING DAYS PRIOR TO EXCAVATION, BASED ON THE COMPLEXITY OF THE PROJECT, THE CONTRACTOR MUST CONTACT THE PA ONE CALL SYSTEM, INC. AT 1-800-242-1776.  
SERIAL NO: FOR TIONESTA TOWNSHIP/  
FOREST COUNTY

ADDITIONAL INFORMATION IS AVAILABLE AT  
<http://www.pa1call.org/PA811/Public/>.

THE CONTRACTOR IS REQUIRED TO NOTIFY THE DEPARTMENT AND SUBMIT AN ALLEGED VIOLATION REPORT (AVR) TO THE PA PUBLIC UTILITY COMMISSION THROUGH THE PA ONE CALL SYSTEM, [WWW.PA1CALL.ORG](http://WWW.PA1CALL.ORG), WITHIN TEN (10) BUSINESS DAYS AFTER A UTILITY LINE IS STRUCK, DAMAGED, OR PREVIOUS DAMAGE IS DISCOVERED AS REQUIRED BY PENNSYLVANIA'S UNDERGROUND UTILITY LINE PROTECTION LAW ACT 50 (P.L.852, NO. 287 AMENDED OCT.30,2017).

## PUBLIC UTILITIES

DESIGN PA ONE CALL INFORMATION IS AS FOLLOWS:  
PA ONE CALL SYSTEM INC. PHONE NO.-1-800-242-1776

PRELIMINARY DESIGN:  
SERIAL NO. 20252533904 TIONESTA TOWNSHIP/  
FOREST COUNTY