

OPERATOR: jljones
FILE NAME: pw:///PDEDPRAPPW01.penn.dot\ct:\Connect_P\Projects\Documents\OpenRoads\Projects\001\25-Erie\25 0430 BSC (72455)\DESIGN\Roadway\CADD Files\25-0699-0280-0873\CADD Files\25-0699-0280-0873\26-DEC-2025 14:49

SUMMARY OF PROJECT COORDINATES

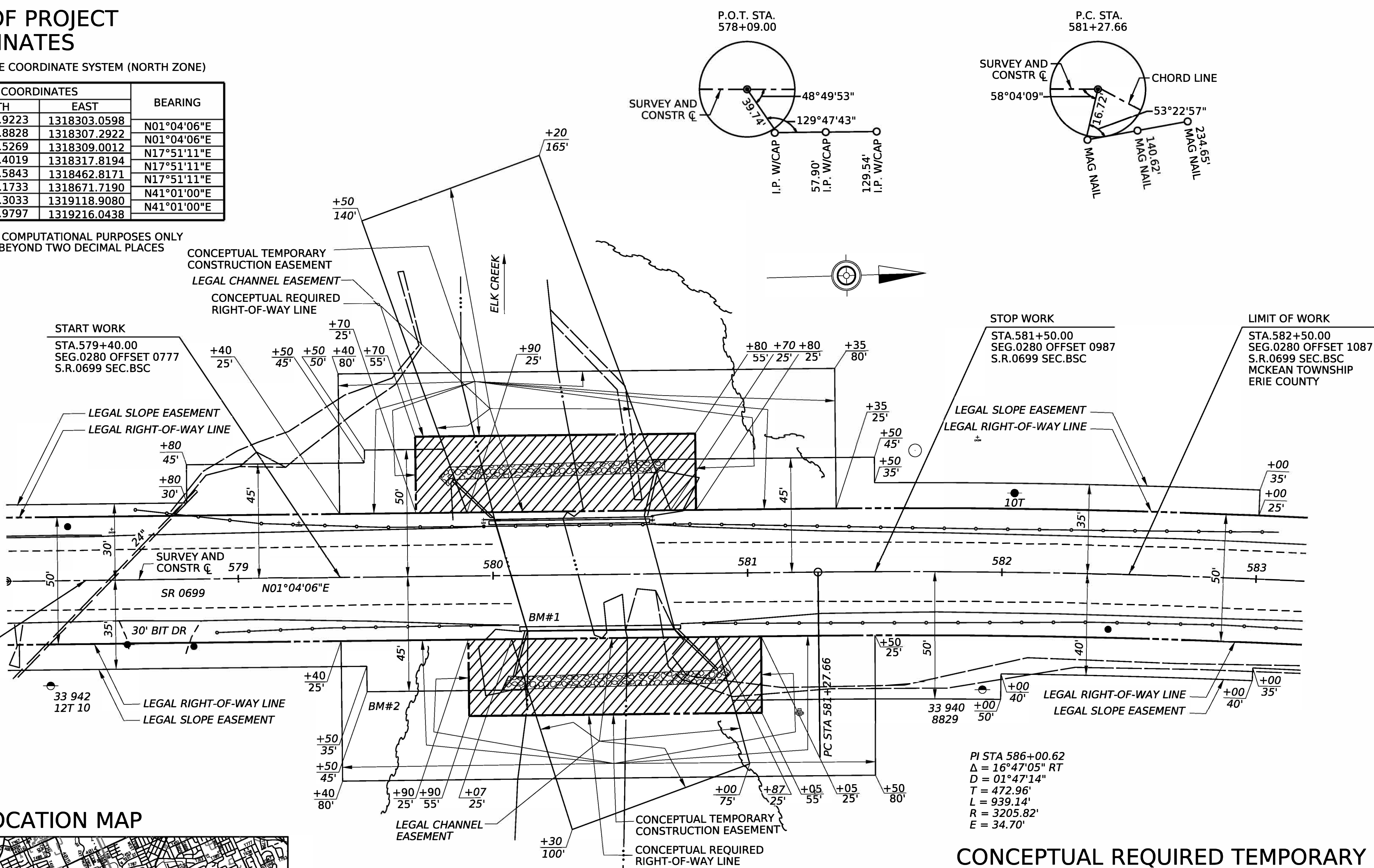
BASED ON PENNSYLVANIA STATE PLANE COORDINATE SYSTEM (NORTH ZONE)

RTE.	STATION	POINT	COORDINATES		BEARING
			NORTH	EAST	
S.R.0699 SURVEY AND CONSTR C	578+09.00	P.O.T	677110.9223	1318303.0598	N01°04'06"E
	580+36.00	P.O.T.	677337.8828	1318307.2922	N01°04'06"E
	581+27.66	P.C.	677429.5269	1318309.0012	N17°51'11"E
	586+00.62	P.I.	677902.4019	1318317.8194	N17°51'11"E
	590+66.80	P.C.C.	678352.5843	1318462.8171	N17°51'11"E
	597+48.20	P.I.	679001.1733	1318671.7190	N41°01'00"E
	604+10.99	P.T.	679515.3033	1319118.9080	N41°01'00"E
	605+59.00	P.O.T.	679626.9797	1319216.0438	N41°01'00"E

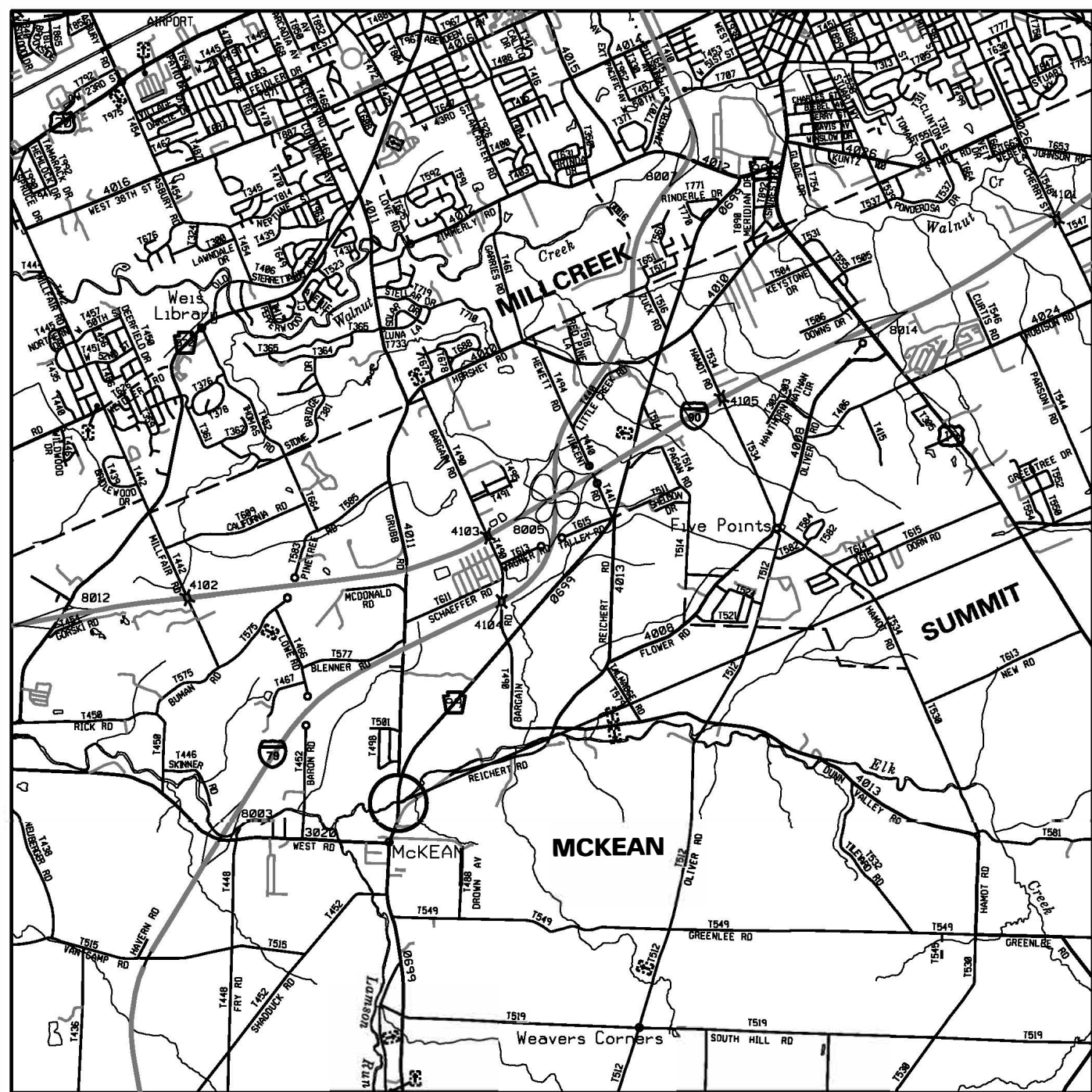
FOUR PLACE COORDINATES ARE FOR COMPUTATIONAL PURPOSES ONLY
AND DO NOT IMPLY A PRECISION BEYOND TWO DECIMAL PLACES

BM #1 ELEVATION 1008.36
23' RT STA. 580+13
PDH BRASS DISK PID ND0110

BM #2 ELEVATION 1014.53
44' RT STA. 579+50
MAG SPIKE IN EP# 33941



LOCATION MAP



CONCEPTUAL REQUIRED RIGHT-OF-WAY OFFSET COORDINATES

BASED ON PENNSYLVANIA STATE PLANE COORDINATE SYSTEM (NORTH ZONE)

STATION	OFFSET	COORDINATES	
		NORTH	EAST
579+70.00	25.00 LT	677272.3604	1318281.0660
579+70.00	55.00 LT	677272.9198	1318251.0712
580+80.00	55.00 LT	677382.9007	1318253.1221
580+80.00	25.00 LT	677382.3413	1318283.1169
579+90.00	25.00 RT	677291.4247	1318331.4302
579+90.00	55.00 RT	677290.8654	1318361.4250
581+05.00	55.00 RT	677405.8454	1318363.5691
581+05.00	25.00 RT	677406.4047	1318333.5743

FOUR PLACE COORDINATES ARE FOR COMPUTATIONAL PURPOSES ONLY
AND DO NOT IMPLY A PRECISION BEYOND TWO DECIMAL PLACES

SCALE
HORIZONTAL

- LEGEND**
- US TRAFFIC ROUTE
 - INTERSTATE TRAFFIC ROUTE
 - STATE ROUTE
 - TOWNSHIP ROAD
 - PROJECT NO DETOUR
- SCALE**
- 0 0.5 1 2 3 MILES

0 25 50 FEET

- LEGEND**
- CONCEPTUAL REQUIRED RIGHT-OF-WAY

CONCEPTUAL REQUIRED TEMPORARY CONSTRUCTION EASEMENT OFFSET COORDINATES

BASED ON PENNSYLVANIA STATE PLANE COORDINATE SYSTEM (NORTH ZONE)

STATION	OFFSET	COORDINATES	
		NORTH	EAST
579+40.00	25.00 LT	677242.3656	1318280.5066
579+40.00	80.00 LT	677243.3911	1318225.5162
581+35.00	80.00 LT	677438.5402	1318229.1640
581+35.00	25.00 LT	677437.3888	1318284.1519
580+80.00	25.00 LT	677382.3413	1318283.1169
580+80.00	55.00 LT	677382.9007	1318253.1221
579+70.00	55.00 LT	677272.9198	1318251.0712
579+70.00	25.00 LT	677272.3604	1318281.0660
579+40.00	25.00 RT	677241.4334	1318330.4979
579+40.00	80.00 RT	677240.4079	1318385.4884
581+50.00	80.00 RT	677449.8125	1318389.4693
581+50.00	25.00 RT	677451.2211	1318334.4873
581+05.00	25.00 RT	677406.4047	1318333.5743
581+05.00	55.00 RT	677405.8454	1318363.5691
579+90.00	55.00 RT	677290.8654	1318361.4250
579+90.00	25.00 RT	677291.4247	1318331.4302

FOUR PLACE COORDINATES ARE FOR COMPUTATIONAL PURPOSES ONLY
AND DO NOT IMPLY A PRECISION BEYOND TWO DECIMAL PLACES

DISTRICT	COUNTY	ROUTE	SECTION	SHEET		
1-0	ERIE	0699	BSC	1 OF 1		
MCKEAN TOWNSHIP/ MCKEAN BOROUGH						
REV NO	REVISIONS			DATE	BY	APPD

25-0699-0280-0873 MPMS 123232

PRELIMINARY PLAN
NOT FOR CONSTRUCTION

GENERAL NOTES

LEGAL RIGHT-OF-WAY DATA:

S.R. 0699 PREVIOUSLY KNOWN AS L.R.00258.

THE LEGAL RIGHT-OF-WAY ON S.R.0699, FORMERLY KNOWN AS L.R. 00258, FROM STATION 578+00.00 TO STATION 583+00.00 IS FIFTY (50) FEET IN WIDTH, BASED ON PLAN L.R.258, SECTION 3 SIGNED BY GOVERNOR JOHN FINE ON DECEMBER 04, 1951 AND RECORDED IN ERIE RIGHT-OF-WAY BOOK VOLUME 4, PAGE 8 ON DECEMBER 10, 1951.

SLOPE EASEMENT. AN EASEMENT FOR THE SUPPORT AND PROTECTION OF THE HIGHWAY, INCLUDING THE RIGHT TO CONSTRUCT, INSPECT, MAINTAIN, REPAIR, RECONSTRUCT AND ALTER DRAINAGE FACILITIES AND THE CONTOUR OF THE LAND. THE EASEMENT SHALL NOT PREVENT THE PROPERTY OWNER FROM MAKING ANY LEGAL USE OF THE AREA WHICH IS NOT DETRIMENTAL TO THE NECESSARY SUPPORT AND PROTECTION OF THE HIGHWAY RIGHT-OF-WAY AND THE SAFETY OF THE TRAVELING PUBLIC.

CHANNEL EASEMENT. AN EASEMENT FOR THE CONSTRUCTION, INSPECTION, MAINTENANCE, REPAIR, RECONSTRUCTION AND ALTERATION OF THE COURSE OF THE CHANNEL. THE EASEMENT SHALL NOT PREVENT THE PROPERTY OWNER FROM MAKING ANY LEGAL USE OF THE AREA WHICH IS NOT DETRIMENTAL TO THE NECESSARY FLOW OF WATER.

TEMPORARY CONSTRUCTION EASEMENT. AN EASEMENT TO USE THE LAND AS NECESSARY DURING CONSTRUCTION OF THE PROJECT. THE EASEMENT IS REQUIRED ONLY UNTIL THE CONSTRUCTION OR WORK INDICATED BY THE PLAN IS COMPLETED, UNLESS SOONER RELINQUISHED IN WRITING BY THE DEPARTMENT.

DO NOT INTERFERE WITH THE OPERATION OF ANY FIRE HYDRANT, FIRE CALL BOX OR POLICE CALL BOX.

THERE ARE NO NAVIGABLE STREAMS ON THIS PROJECT.

ACCESS TO ALL PROPERTIES AFFECTED BY THIS PROJECT SHALL BE MAINTAINED DURING CONSTRUCTION, UNLESS EXPRESSLY STATED OTHERWISE WITHIN THIS PLAN.

ALL CURVE DATA IS BASED ON THE ARC DEFINITION UNLESS OTHERWISE INDICATED.

THE VERTICAL CONTROL IS BASED UPON THE NORTH AMERICAN VERTICAL DATUM OF 1988 (NAVD 88).

THE PROJECT IS TIED TO THE PENNSYLVANIA STATE PLANE COORDINATE SYSTEM ZONE NORTH NAD 83(2011). A SCALE FACTOR OF 0.99996577 WAS USED FOR THIS PROJECT.

CONSTRUCTION PA ONE CALL INFORMATION IS AS FOLLOWS:

THREE TO TEN WORKING DAYS PRIOR TO EXCAVATION, BASED ON THE COMPLEXITY OF THE PROJECT, THE CONTRACTOR MUST CONTACT THE PA ONE CALL SYSTEM, INC. AT 1-800-242-1776.
SERIAL NO: FOR MCKEAN TOWNSHIP/ ERIE COUNTY

ADDITIONAL INFORMATION IS AVAILABLE AT
<http://www.pa1call.org/PA811/Public/>.

THE CONTRACTOR IS REQUIRED TO NOTIFY THE DEPARTMENT AND SUBMIT AN ALLEGED VIOLATION REPORT (AVR) TO THE PA PUBLIC UTILITY COMMISSION THROUGH THE PA ONE CALL SYSTEM, WWW.PA1CALL.ORG, WITHIN TEN (10) BUSINESS DAYS AFTER A UTILITY LINE IS STRUCK, DAMAGED, OR PREVIOUS DAMAGE IS DISCOVERED AS REQUIRED BY PENNSYLVANIA'S UNDERGROUND UTILITY LINE PROTECTION LAW ACT 50 (P.L.852, NO. 287 AMENDED OCT.30,2017).

PUBLIC UTILITIES

DESIGN PA ONE CALL INFORMATION IS AS FOLLOWS:
PA ONE CALL SYSTEM INC. PHONE NO.-1-800-242-1776

PRELIMINARY DESIGN
SERIAL NO. 20253070513 MCKEAN TOWNSHIP/ ERIE COUNTY

SURVEY BOOK 20785