

SUMMARY OF PROJECT COORDINATES

BASED ON PENNSYLVANIA STATE PLANE COORDINATE SYSTEM (NORTH ZONE)

RTE.	STATION	POINT	COORDINATES		BEARING
			NORTH	EAST	
S.R.0505 SURVEY AND CONSTR. C	986+23.63	P.O.T	709844.4058	1339314.1237	N58°13'21"W
	987+54.06	P.C.	709913.0934	1339203.2454	N58°13'21"W
	991+05.52	P.I.	710098.1819	1338904.4676	N05°58'54"W
	994+07.60	P.T.	710447.7309	1338867.8415	N05°58'54"W
	A996+00.00	P.O.T.	710633.6531	1338848.3604	

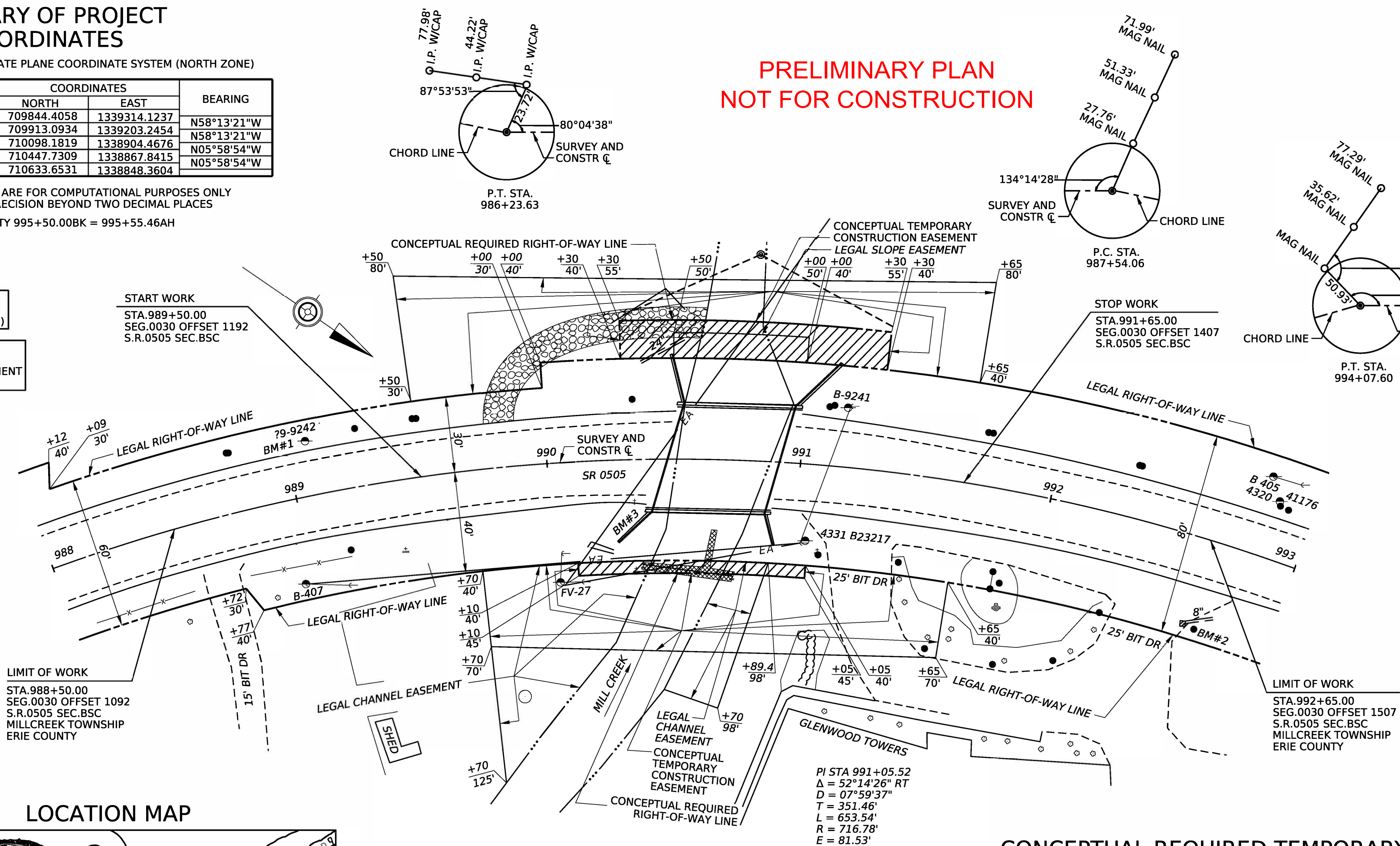
FOUR PLACE COORDINATES ARE FOR COMPUTATIONAL PURPOSES ONLY
AND DO NOT IMPLY A PRECISION BEYOND TWO DECIMAL PLACES

STATION EQUALITY 995+50.00BK = 995+55.46AH

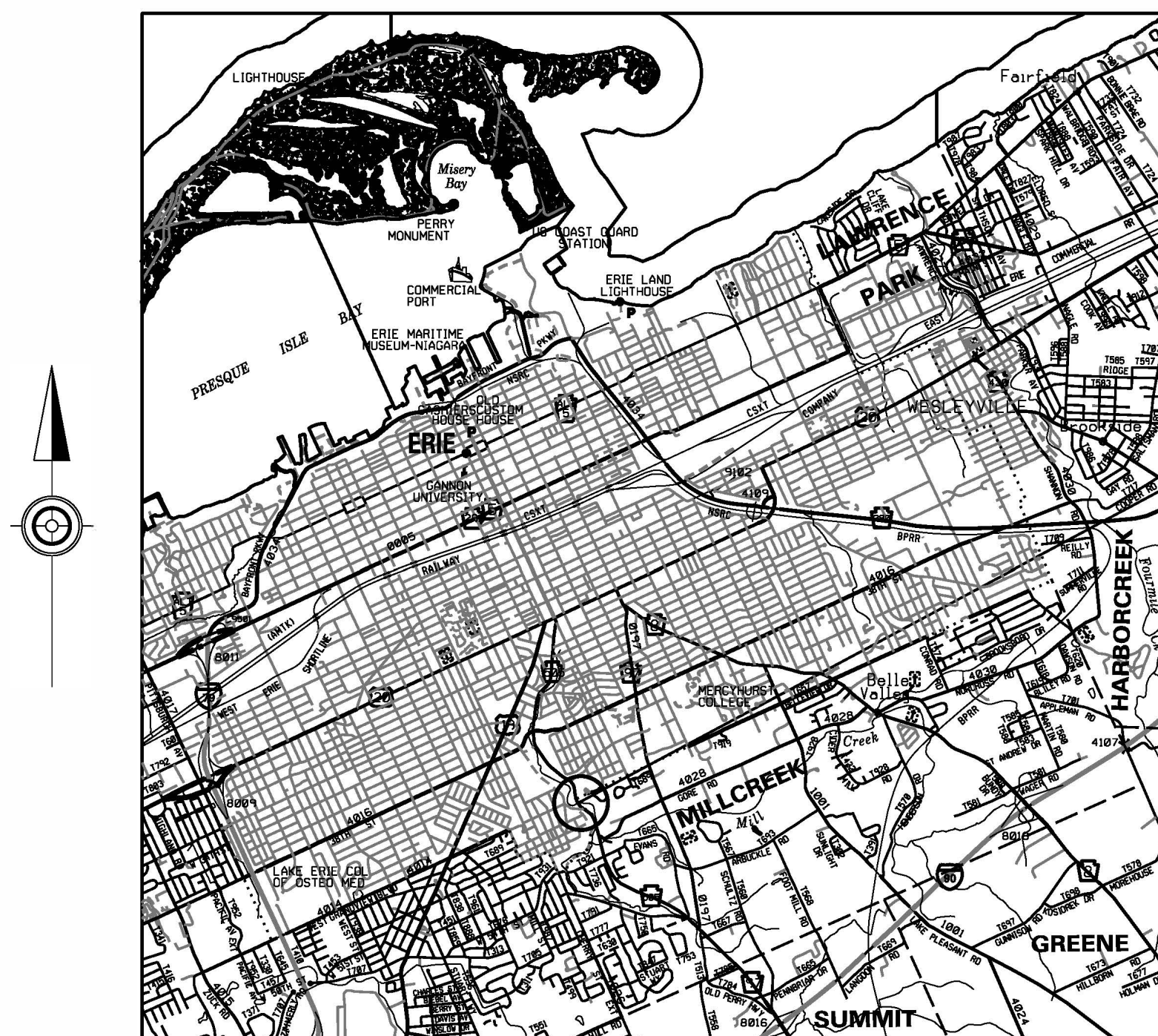
BM #1 ELEVATION 821.52
22' RT STA. 989+08
COTTON SPINDLE IN EP #9242

BM #2 ELEVATION 815.49
23' RT STA. 992+86
MAG SPIKE IN POP (ANTENNA POLE)

BM #3 ELEVATION 814.76
21' RT STA. 990+40
PDH BRASS DISK IN TOP OF ABUTMENT
WING ON SE CORNER OF BRIDGE



LOCATION MAP



CONCEPTUAL REQUIRED RIGHT-OF-WAY OFFSET COORDINATES

BASED ON PENNSYLVANIA STATE PLANE COORDINATE
SYSTEM (NORTH ZONE)

STATION	OFFSET	COORDINATES	
		NORTH	EAST
990+30.00	40.00 LT	710075.8402	1338969.7554
990+30.00	55.00 LT	710066.9885	1338957.6456
991+30.00	55.00 LT	710158.0586	1338900.3659
991+30.00	40.00 LT	710165.1403	1338913.5890
990+10.00	40.00 RT	710107.9614	1339045.6959
990+10.00	45.00 RT	710111.0235	1339049.6486
991+05.00	45.00 RT	710184.8122	1338999.9395
991+05.00	40.00 RT	710182.2994	1338995.6168

FOUR PLACE COORDINATES ARE FOR COMPUTATIONAL PURPOSES ONLY
AND DO NOT IMPLY A PRECISION BEYOND TWO DECIMAL PLACES

SCALE

HORIZONTAL



CONCEPTUAL REQUIRED TEMPORARY CONSTRUCTION EASEMENT OFFSET COORDINATES

BASED ON PENNSYLVANIA STATE PLANE COORDINATE
SYSTEM (NORTH ZONE)

STATION	OFFSET	COORDINATES	
		NORTH	EAST
989+50.00	30.00 LT	710017.3084	1339030.3975
989+50.00	80.00 LT	709983.5161	1338993.8342
991+65.00	80.00 LT	710180.9878	1338860.8037
991+65.00	40.00 LT	710198.1288	1338896.9450
991+30.00	40.00 LT	710165.1403	1338913.5890
991+30.00	55.00 LT	710158.0586	1338900.3659
990+30.00	55.00 LT	710066.9885	1338957.6456
990+30.00	40.00 LT	710075.8402	1338969.7554
990+00.00	40.00 LT	710050.6676	1338988.9764
990+00.00	30.00 LT	710056.9013	1338996.7956
989+70.00	40.00 RT	710078.7651	1339069.6461
989+70.00	70.00 RT	710098.4315	1339092.3007
991+65.00	70.00 RT	710245.2664	1338996.3333
991+65.00	40.00 RT	710232.4107	1338969.2274
991+05.00	40.00 RT	710182.2994	1338995.6168
991+05.00	45.00 RT	710184.8122	1338999.9395
990+10.00	45.00 RT	710111.0235	1339049.6486
990+10.00	40.00 RT	710107.9614	1339045.6955

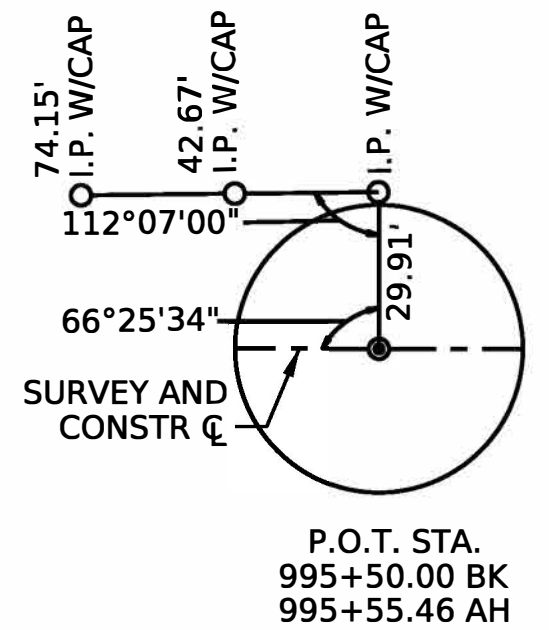
FOUR PLACE COORDINATES ARE FOR COMPUTATIONAL PURPOSES ONLY
AND DO NOT IMPLY A PRECISION BEYOND TWO DECIMAL PLACES

LEGEND

 CONCEPTUAL REQUIRED RIGHT-OF-WAY

DISTRICT	COUNTY	ROUTE	SECTION	SHEET	
1-0	ERIE	0505	BSC	1	OF 1
MILLCREEK TOWNSHIP					
REV NO	REVISIONS		DATE	BY	APPD

25-0505-0030-1312 MPMS 97213



GENERAL NOTES

LEGAL RIGHT-OF-WAY DATA:

S.R. 0505 PREVIOUSLY KNOWN AS L.R.00084.

THE LEGAL RIGHT-OF-WAY ON S.R.0505, FORMERLY KNOWN AS L.R. 00084, FROM STATION 988+00.00 TO STATION 993+00.00 VARIES FROM SIXTY (60) FEET TO EIGHTY (80) FEET IN WIDTH, BASED ON PLAN L.R.84, SECTION 8 SIGNED BY GOVERNOR JOHN FINE ON JANUARY 23, 1951 AND RECORDED IN ERIE RIGHT-OF-WAY BOOK VOLUME 3, PAGE 21 ON JANUARY 30, 1951.

SLOPE EASEMENT, AN EASEMENT FOR THE SUPPORT AND PROTECTION OF THE HIGHWAY, INCLUDING THE RIGHT TO CONSTRUCT, INSPECT, MAINTAIN, REPAIR, RECONSTRUCT AND ALTER DRAINAGE FACILITIES AND THE CONTOUR OF THE LAND. THE EASEMENT SHALL NOT PREVENT THE PROPERTY OWNER FROM MAKING ANY LEGAL USE OF THE AREA WHICH IS NOT DETRIMENTAL TO THE NECESSARY SUPPORT AND PROTECTION OF THE HIGHWAY RIGHT-OF-WAY AND THE SAFETY OF THE TRAVELING PUBLIC.

CHANNEL EASEMENT. AN EASEMENT FOR THE CONSTRUCTION, INSPECTION, MAINTENANCE, REPAIR, RECONSTRUCTION AND ALTERATION OF THE COURSE OF THE CHANNEL. THE EASEMENT SHALL NOT PREVENT THE PROPERTY OWNER FROM MAKING ANY LEGAL USE OF THE AREA WHICH IS NOT DETRIMENTAL TO THE NECESSARY FLOW OF WATER.

TEMPORARY CONSTRUCTION EASEMENT. AN EASEMENT TO USE THE LAND AS NECESSARY DURING CONSTRUCTION OF THE PROJECT. THE EASEMENT IS REQUIRED ONLY UNTIL THE CONSTRUCTION OR WORK INDICATED BY THE PLAN IS COMPLETED, UNLESS SOONER RELINQUISHED IN WRITING BY THE DEPARTMENT.

DO NOT INTERFERE WITH THE OPERATION OF ANY FIRE
HYDRANT, FIRE CALL BOX OR POLICE CALL BOX.

THERE ARE NO NAVIGABLE STREAMS ON THIS PROJECT.

ACCESS TO ALL PROPERTIES AFFECTED BY THIS PROJECT SHALL BE MAINTAINED DURING CONSTRUCTION, UNLESS EXPRESSLY STATED OTHERWISE WITHIN THIS PLAN.

ALL CURVE DATA IS BASED ON THE ARC DEFINITION
UNLESS OTHERWISE INDICATED.

THE VERTICAL CONTROL IS BASED UPON THE NORTH AMERICAN VERTICAL DATUM OF 1988 (NAVD 88).

THE PROJECT IS TIED TO THE PENNSYLVANIA STATE PLANE COORDINATE SYSTEM ZONE NORTH NAD 83(2011). A SCALE FACTOR OF 0.999992519 WAS USED FOR THIS PROJECT.

CONSTRUCTION PA ONE CALL INFORMATION IS AS FOLLOWS:

THREE TO TEN WORKING DAYS PRIOR TO EXCAVATION, BASED ON THE COMPLEXITY OF THE PROJECT, THE CONTRACTOR MUST CONTACT THE PA ONE CALL SYSTEM, INC. AT 1-800-242-1776.

ADDITIONAL INFORMATION IS AVAILABLE AT
<http://www.pa1call.org/PA811/Public/>.

PUBLIC UTILITIES

DESIGN PA ONE CALL INFORMATION IS AS FOLLOWS:
PA ONE CALL SYSTEM INC. PHONE NO.-1-800-242-1776

PRELIMINARY DESIGN
SERIAL NO. 20253070472 MILLCREEK TOWNSHIP/
ERIE COUNTY

SURVEY BOOK 20777