

OPERATOR: jljones
FILE NAME: pw://PDEDPRAPPW01.pennidot.lcl:Connect_Projects/Documents/OpenRoads_Projects/D01/25-Erie/25 0430 BSC (72455)/DESIGN/Roadway/CADD Files/25-0020-0894-0000/CADD Files/25-0020-0894-0000/25-0020-0894-0000.DWG: 29-DEC-2025 08:13

SUMMARY OF PROJECT COORDINATES

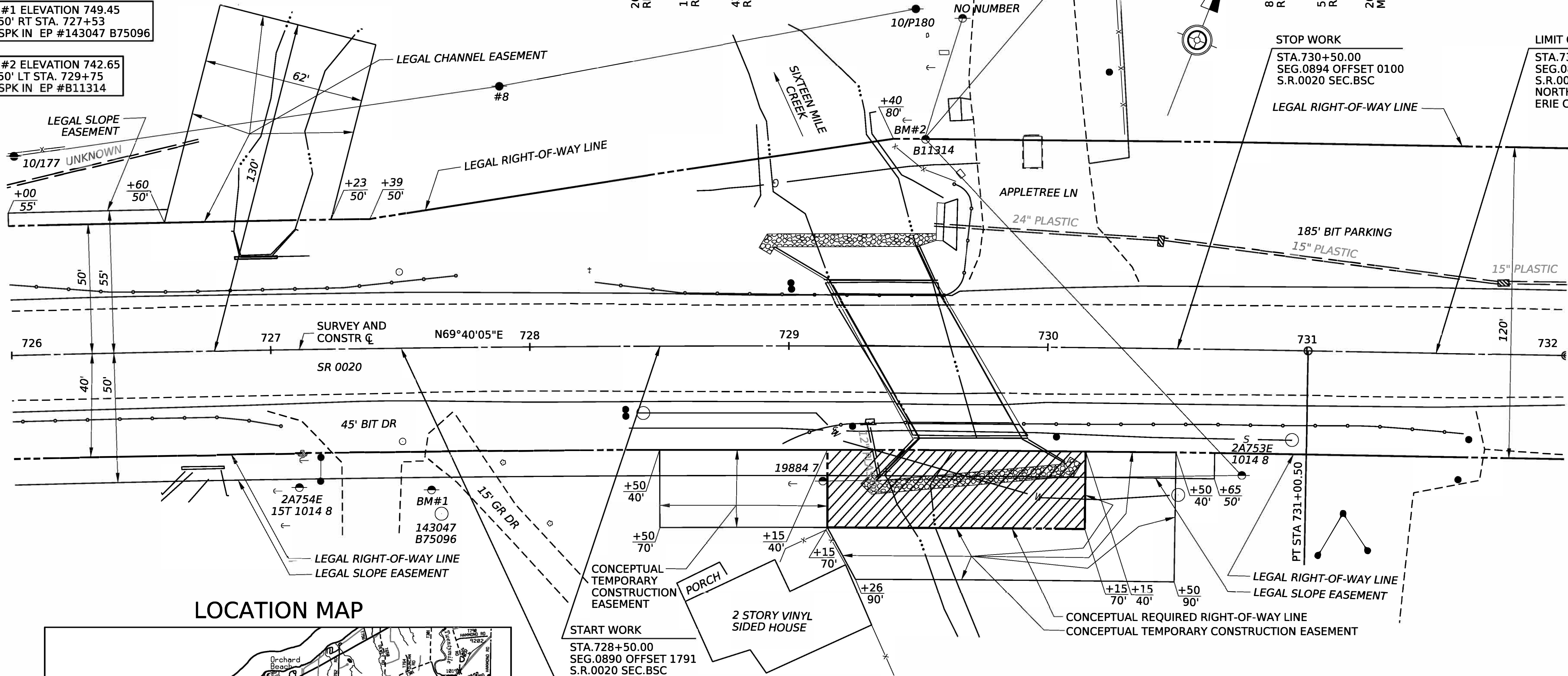
BASED ON PENNSYLVANIA STATE PLANE COORDINATE SYSTEM (NORTH ZONE)

RTE.	STATION	POINT	COORDINATES		BEARING
			NORTH	EAST	
S.R.0020 SURVEY AND CONSTR CL	716+00.00	P.O.T	750835.3954	1397925.1558	N62°29'05"E
	716+63.80	P.C.	750864.8700	1397981.7393	N62°29'05"E
	723+83.09	P.I.	751197.1728	1398619.6707	N69°40'05"E
	731+00.50	P.T.	751447.0974	1399294.1477	N69°40'05"E
	732+00.00	P.O.T.	751481.6696	1399387.4484	N69°40'05"E

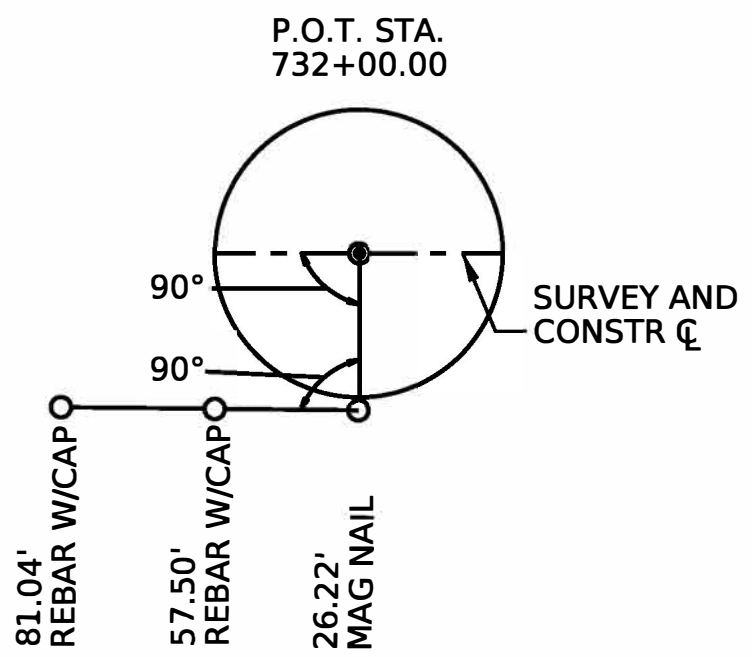
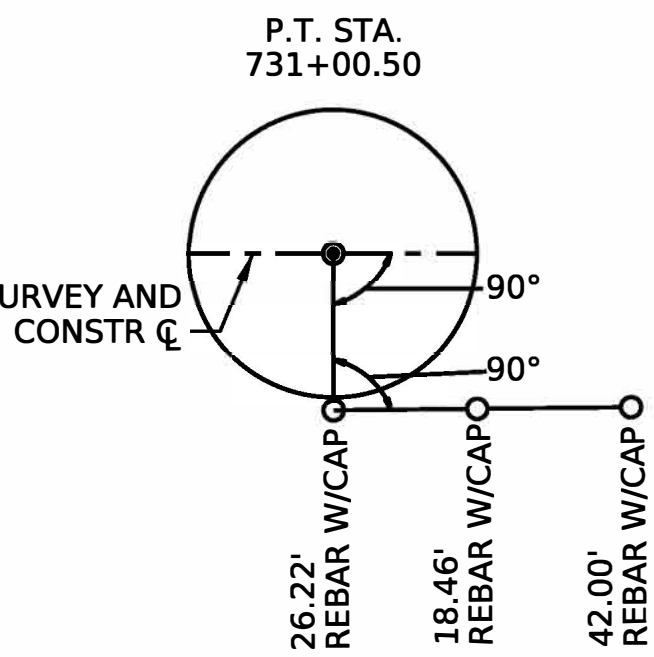
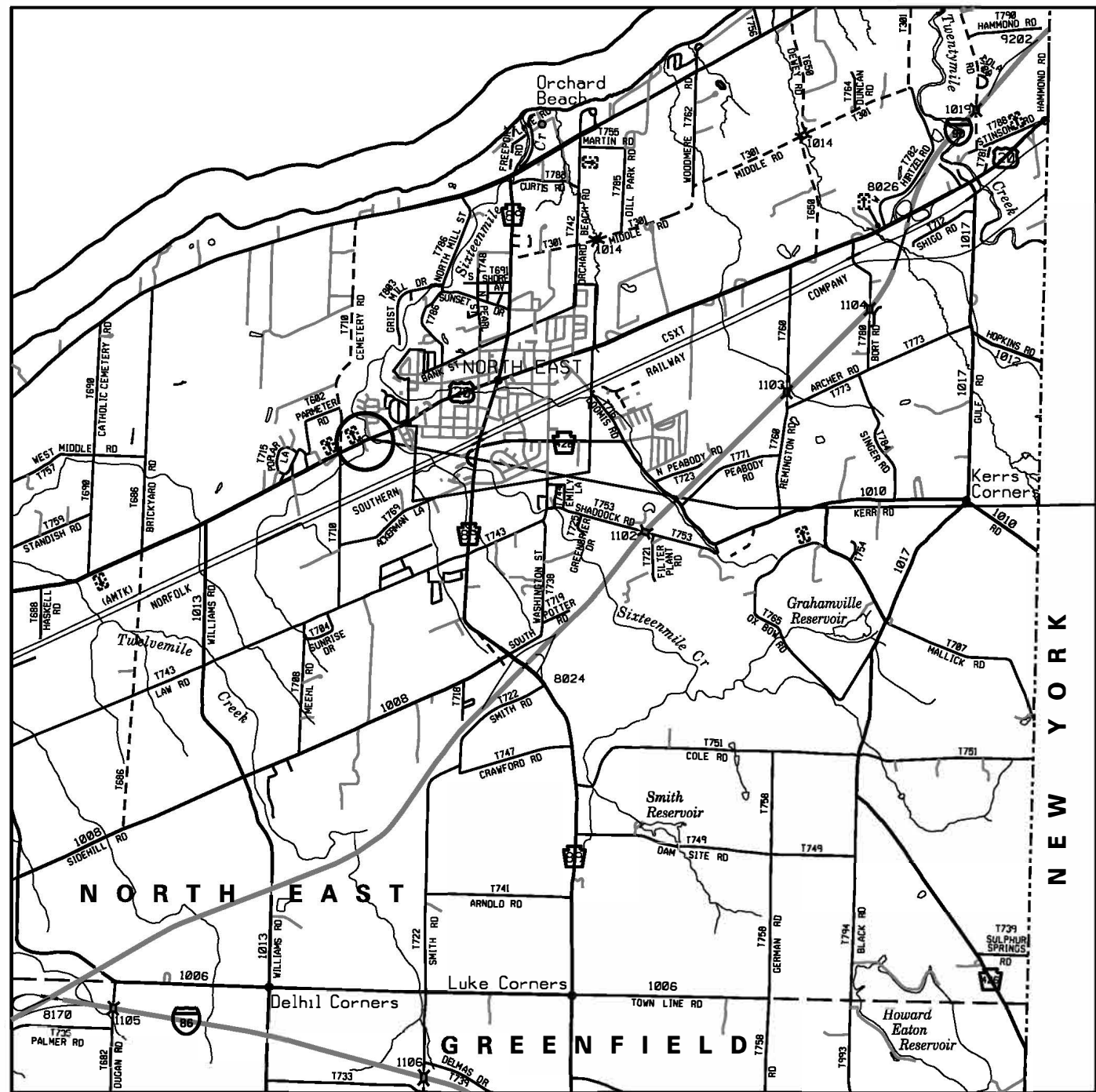
FOUR PLACE COORDINATES ARE FOR COMPUTATIONAL PURPOSES ONLY AND DO NOT IMPLY A PRECISION BEYOND TWO DECIMAL PLACES

BM #1 ELEVATION 749.45
55.50' RT STA. 727+53
WI SPK IN EP #143047 B75096

BM #2 ELEVATION 742.65
82.50' LT STA. 729+75
WI SPK IN EP #B11314



LOCATION MAP



- LEGEND**
- US TRAFFIC ROUTE
 - INTERSTATE TRAFFIC ROUTE
 - STATE ROUTE
 - TOWNSHIP ROAD
 - PROJECT NO DETOUR

0 0.5 1 2 3 MILES

CONCEPTUAL REQUIRED RIGHT-OF-WAY OFFSET COORDINATES

BASED ON PENNSYLVANIA STATE PLANE COORDINATE SYSTEM (NORTH ZONE)

STATION	OFFSET	COORDINATES	
		NORTH	EAST
729+15.00	40.00 RT	751343.9608	1399135.2382
729+15.00	70.00 RT	751316.0024	1399146.1159
730+15.00	70.00 RT	751351.6355	1399238.8975
730+15.00	40.00 RT	751379.6878	1399228.2641

FOUR PLACE COORDINATES ARE FOR COMPUTATIONAL PURPOSES ONLY AND DO NOT IMPLY A PRECISION BEYOND TWO DECIMAL PLACES

SCALE
HORIZONTAL

0 25 50 FEET

LEGEND
CONCEPTUAL REQUIRED RIGHT-OF-WAY

CONCEPTUAL REQUIRED TEMPORARY CONSTRUCTION EASEMENT OFFSET COORDINATES

BASED ON PENNSYLVANIA STATE PLANE COORDINATE SYSTEM (NORTH ZONE)

STATION	OFFSET	COORDINATES	
		NORTH	EAST
728+50.00	40.00 RT	751320.3952	1399075.1716
728+50.00	70.00 RT	751292.4073	1399085.9761
729+15.00	70.00 RT	751316.0024	1399146.1159
729+26.00	90.00 RT	751301.3157	1399163.5406
730+50.00	90.00 RT	751345.1925	1399278.4758
730+50.00	40.00 RT	751392.0002	1399260.8964
730+15.00	40.00 RT	751379.6878	1399228.2641
730+15.00	70.00 RT	751351.6355	1399238.8975
729+15.00	70.00 RT	751316.0024	1399146.1159
729+15.00	40.00 RT	751343.9608	1399135.2382

FOUR PLACE COORDINATES ARE FOR COMPUTATIONAL PURPOSES ONLY AND DO NOT IMPLY A PRECISION BEYOND TWO DECIMAL PLACES

DISTRICT	COUNTY	ROUTE	SECTION	SHEET
1-0	ERIE	0020	BSC	1 OF 1
NORTHEAST TOWNSHIP				
REV NO	REVISIONS		DATE	BY APPD

25-0020-0894-0000 MPMS 97205

PRELIMINARY PLAN
NOT FOR CONSTRUCTION

GENERAL NOTES

LEGAL RIGHT-OF-WAY DATA:

S.R. 0020 PREVIOUSLY KNOWN AS L.R.00087.

THE LEGAL RIGHT-OF-WAY ON S.R.0020, FORMERLY KNOWN AS L.R. 00087, FROM STATION 726+00.00 TO STATION 732+00.00 VARIES FROM NINETY (90) FEET TO ONE HUNDRED TWENTY (120) FEET IN WIDTH, BASED ON PLAN L.R.87, SECTION 8 SIGNED BY GOVERNOR ARTHUR JAMES ON MARCH 31, 1941.

CHANNEL EASEMENT. AN EASEMENT FOR THE CONSTRUCTION, INSPECTION, MAINTENANCE, REPAIR, RECONSTRUCTION AND ALTERATION OF THE COURSE OF THE CHANNEL. THE EASEMENT SHALL NOT PREVENT THE PROPERTY OWNER FROM MAKING ANY LEGAL USE OF THE AREA WHICH IS NOT DETRIMENTAL TO THE NECESSARY SUPPORT AND PROTECTION OF THE HIGHWAY RIGHT-OF-WAY AND THE SAFETY OF THE TRAVELING PUBLIC.

SLOPE EASEMENT. AN EASEMENT FOR THE SUPPORT AND PROTECTION OF THE HIGHWAY, INCLUDING THE RIGHT TO CONSTRUCT, INSPECT, MAINTAIN, REPAIR, RECONSTRUCT AND ALTER DRAINAGE FACILITIES AND THE CONTOUR OF THE LAND. THE EASEMENT SHALL NOT PREVENT THE PROPERTY OWNER FROM MAKING ANY LEGAL USE OF THE AREA WHICH IS NOT DETRIMENTAL TO THE NECESSARY SUPPORT AND PROTECTION OF THE HIGHWAY RIGHT-OF-WAY AND THE SAFETY OF THE TRAVELING PUBLIC.

TEMPORARY CONSTRUCTION EASEMENT. AN EASEMENT TO USE THE LAND AS NECESSARY DURING CONSTRUCTION OF THE PROJECT. THE EASEMENT IS REQUIRED ONLY UNTIL THE CONSTRUCTION OR WORK INDICATED BY THE PLAN IS COMPLETED, UNLESS SOONER RELINQUISHED IN WRITING BY THE DEPARTMENT.

THERE ARE NO NAVIGABLE STREAMS ON THIS PROJECT.

ACCESS TO ALL PROPERTIES AFFECTED BY THIS PROJECT SHALL BE MAINTAINED DURING CONSTRUCTION, UNLESS EXPRESSLY STATED OTHERWISE WITHIN THIS PLAN.

DO NOT INTERFERE WITH THE OPERATION OF ANY FIRE HYDRANT, FIRE CALL BOX OR POLICE CALL BOX.

THE VERTICAL CONTROL IS BASED UPON THE NORTH AMERICAN VERTICAL DATUM OF 1988 (NAVD 88).

THE PROJECT IS TIED TO THE PENNSYLVANIA STATE PLANE COORDINATE SYSTEM ZONE NORTH NAD 83(2011). A SCALE FACTOR OF 1.00001853 WAS USED FOR THIS PROJECT.

CONSTRUCTION PA ONE CALL INFORMATION IS AS FOLLOWS:

THREE TO TEN WORKING DAYS PRIOR TO EXCAVATION, BASED ON THE COMPLEXITY OF THE PROJECT, THE CONTRACTOR MUST CONTACT THE PA ONE CALL SYSTEM, INC. AT 1-800-242-1776.
SERIAL NO: FOR NORTHEAST TOWNSHIP/ERIE COUNTY

ADDITIONAL INFORMATION IS AVAILABLE AT
<http://www.pa1call.org/PA811/Public/>.

THE CONTRACTOR IS REQUIRED TO NOTIFY THE DEPARTMENT AND SUBMIT AN ALLEGED VIOLATION REPORT (AVR) TO THE PA PUBLIC UTILITY COMMISSION THROUGH THE PA ONE CALL SYSTEM, WWW.PA1CALL.ORG, WITHIN TEN (10) BUSINESS DAYS AFTER A UTILITY LINE IS STRUCK, DAMAGED, OR PREVIOUS DAMAGE IS DISCOVERED AS REQUIRED BY PENNSYLVANIA'S UNDERGROUND UTILITY LINE PROTECTION LAW ACT 50 (P.L.852, NO. 287 AMENDED OCT.30,2017).

PUBLIC UTILITIES

DESIGN PA ONE CALL INFORMATION IS AS FOLLOWS:
PA ONE CALL SYSTEM INC. PHONE NO.-1-800-242-1776

PRELIMINARY DESIGN
SERIAL NO. 20253070289 NORTHEAST TOWNSHIP/ERIE COUNTY

SURVEY BOOK 20788