

Predictive Analysis for Work Zones

Minimizing Congestion and Delays

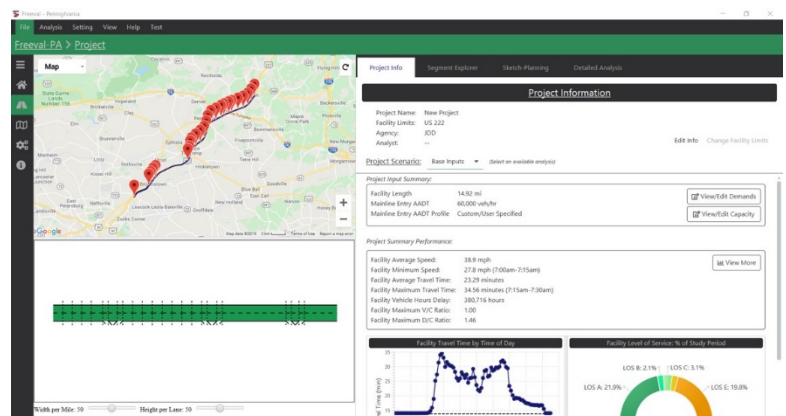
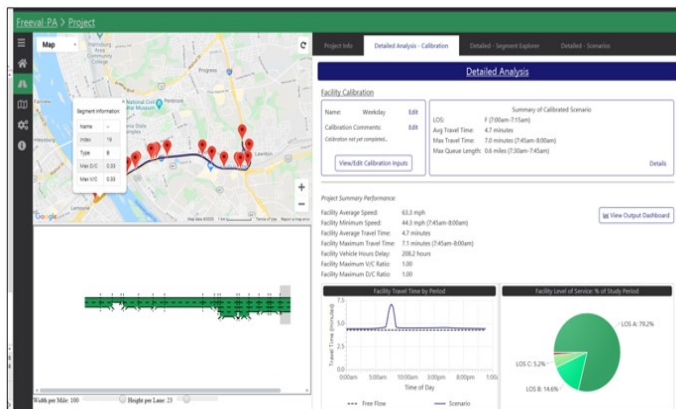
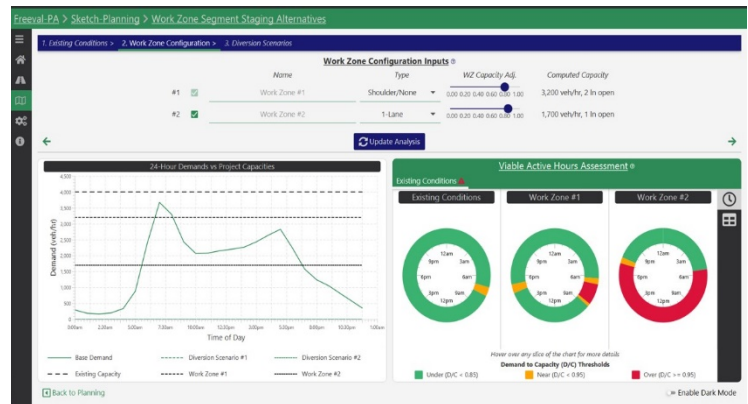
Planning for efficient and effective work zones on Pennsylvania's roadways will minimize congestion and delays. FREeway EVALuation-Pennsylvania, or [FREEVAL-PA](#), is a predictive work zone assessment tool created to analyze work zones' effect on traffic flow. It guides PennDOT's decision-making process to implement lane closures, crossovers, or other traffic control methods to minimize congestion and delays during construction or maintenance projects.

What are the benefits?

- **Saves time** evaluating freeway performance
- **More efficient** and **effective** work zone planning and set-up
- **Reduces congestion** and **delays** in work zones

How does it work?

Roadway characteristics of every freeway segment in Pennsylvania, along with traffic volume and speed data, weather data, terrain data, and a computational engine powered by the Highway Capacity Manual, are programmed into FREEVAL-PA. The software provides planners and engineers with the ability to quickly test the impacts of different work zone scenarios and quantify the effects of congestion over time. The software allows the user to create new analyses, open and review existing research, and test incident planning scenarios.



How do I learn more?

To learn more about this innovation, visit www.penndot.pa.gov/stic or email penndotstic@pa.gov.