



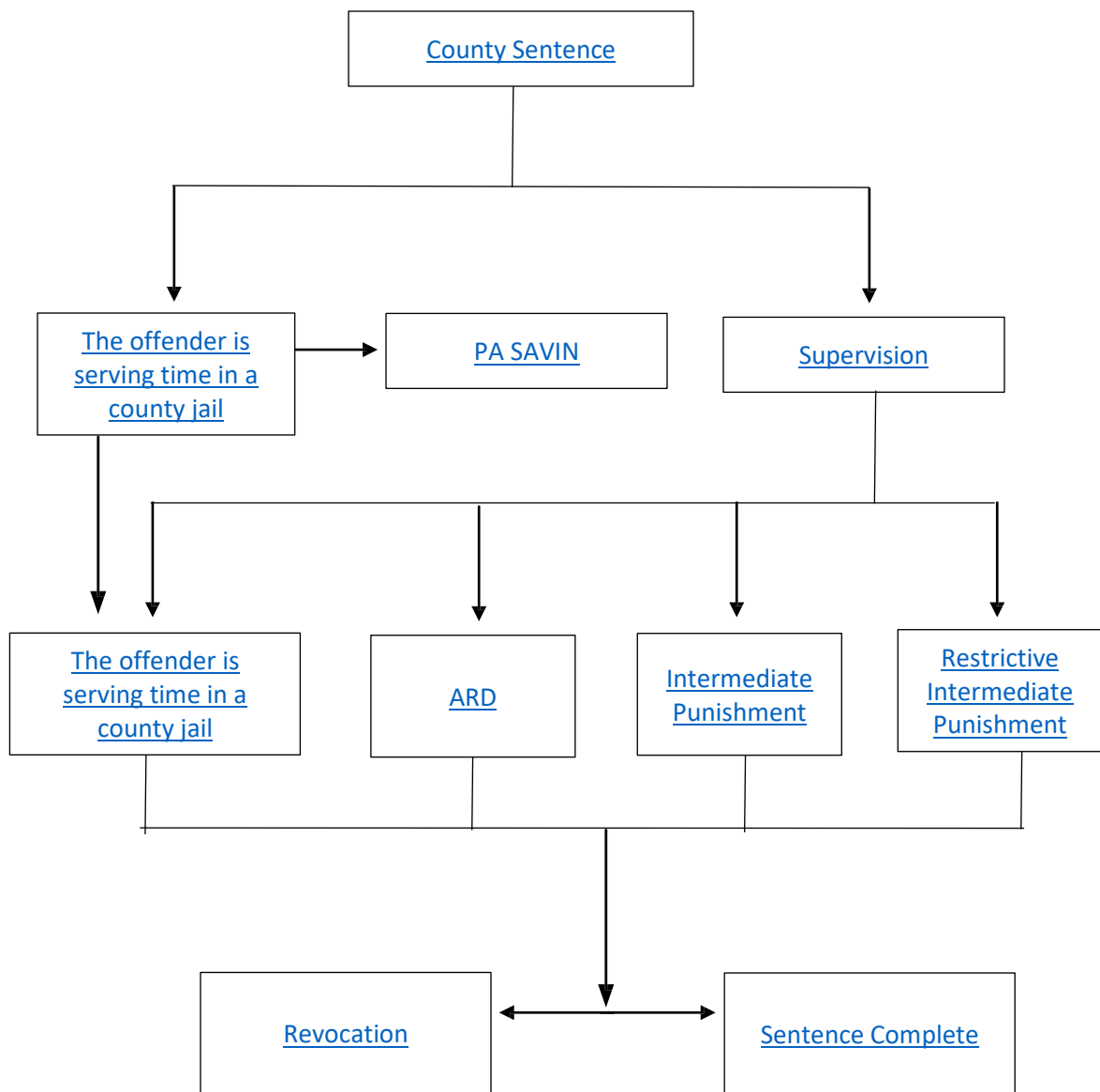
Pennsylvania  
**Commission on Crime  
and Delinquency**

---

# **County Court Walkthrough**

---

Pennsylvania Commission on Crime and Delinquency (PCCD)  
Office of Victims' Services (OVS)



## County sentence

An offender whose maximum term of confinement is less than two years is confined in a county jail.

If the offender is serving a maximum sentence of two years or more, and by a judge's order the offender is serving that time in a county jail instead of a state prison, you must register with both PA SAVIN and the Office of the Victim Advocate to receive proper notifications.

An offender may also be given a sentence which requires them to participate in one of the various Community Supervision programs instead of being confined in the county jail.

## The Offender is Serving Time in a County Jail

Jails, sometimes called local correctional facilities, are normally owned and operated by the county. There are 63 county jails in Pennsylvania. The four counties that do not have their own jails are Cameron, Forest, Fulton and Sullivan. Those counties place their prisoners in jails in other counties.

Usually offenders with a maximum sentence of less than two years are sent to a county jail. The court can decide to send offenders with sentences of two years to less than five years to a county jail or to state prison.

You may register to be notified when an offender is transferred, escapes or is released from a county jail by using PA SAVIN.

## Supervision

Community supervision is placing an offender under supervision, with rules set by a court for a specific time period during which:

- the trial may be delayed without the offender admitting guilt;
- a jail sentence is determined and the sentence is put off in part or all together; or a person is placed under supervision after being released from prison or jail, with rules set by the releasing authority for a specified period.

Community supervision provides an inexpensive means to hold offenders responsible, while at the same time addressing the causes of criminal behavior and reducing the risk of future criminal behavior.

Each part of community supervision - punishment, and services - is important to this approach. County community supervision departments develop restrictions, such as electronic monitoring, community work crews, day reporting centers, residential work centers, intermediate punishment, parole and intensive supervision programs. Services, such as alcohol/drug treatment, sex offender treatment, employment, and mental health services are also important for long-term behavioral change and public safety.

## PA SAVIN

PA SAVIN is a service that will help you receive your notifications rights.

You have the right to receive notice of the release of an adult offender from a local correctional facility including work release, furlough, parole and release from a boot camp or community treatment center placement.

You have the right, in personal injury crimes, to be provided with immediate notice of escape of the adult and subsequent apprehension.

You have the right to be provided immediate notification of an adult offender's pretrial escape from a local correctional facility and of the offender's subsequent apprehension.

## **Accelerated Rehabilitative Disposition (ARD)**

The ARD Program is usually for first time offenders. The program is intended to encourage offenders to make a fresh start after participating in a rehabilitative program and offers them the possibility of dismissal of charges and the expungement of the offender's arrest record upon completion of the program.

## **Intermediate Punishment (IP)**

A sentencing alternative available to the court for eligible offenders who would otherwise be sentenced to partial or total confinement in a county correctional facility.

## **Restrictive Intermediate Punishment (RIP)**

Programs used within an intermediate punishment sentence which either:

- House the offender full or part time; or
- Significantly restrict the offender's movement and monitor the offender's compliance with the programs; or
- Involve a combination of programs that meet the standards set forth above.

## **Revocation**

While on probation/supervision or parole, an offender may be returned to jail at any time for failing to follow the rules and conditions set by the county probation department. If returned to jail, the inmate will continue serving their sentence but may be reviewed again in the future for parole.

## **Sentence Completed**

An offender's sentence is completed when they have reached their maximum sentence. This may be done either while the offender is participating in various programs such as county probation or parole. Or an inmate may serve their entire sentence in prison. If they were sentenced to a 5-10 year sentence, and they served the entire 10 years, they will be released from prison. This means that no one has jurisdiction over the offender and the offender will not be supervised by anyone.