

EXECUTIVE BOARD RESOLUTION

**RESOLUTION NO. OR-25-015
October 21, 2025**

WHEREAS, The Secretary of the Department of Revenue has requested, pursuant to Sections 212 and 709(b) of *The Administrative Code of 1929*, approval, in the Office of Administration, to abolish the Business Analysis and Process Improvement Division in the Bureau of Process Reinvention, Innovation, and Strategic Management (PRISM); in the Office of Tax Policy, Bureau of Audits, establish the Special Audit Division and rename the Computerized Audit Support Division to the Computerized Audit Support and Gaming Division, the Sales and Use/Personal Income Tax Audit Program Division to the Sales and Use Tax Audit Program Division, and the Liquid Fuels/Cigarette and Beverage Tax Audit Program Division to the Liquid Fuels and Cigarette Tax Audit Program Division; and abolish the Fiscal Analysis Division in the Bureau of Research; and

WHEREAS, The Secretary of the Department of Revenue has further requested approval in the Office of Taxation, Bureau of Business Taxpayer Accounting, to rename the Account Maintenance Division to the Corporation Tax Accounting Division, the Business Tax Payment Refund Division to the Business Tax Division, and the Motor and Alternative Fuel Taxes Payment Refund Division to the Motor and Alternative Fuel Tax Accounting Division; in the Bureau of Business Tax Return Processing, rename the Corporation Tax Division to the Corporation Tax Return Processing Division and the Motor and Alternative Fuel Tax Division to the Motor and Alternative Fuel Tax Return Processing Division; and in the Office of Compliance and Collections, Customer Experience Center, establish the Contact Center Division and abolish the Customer Service Division, eServices Division, Account Resolution Division, and Inheritance Tax Customer Service Division; and abolish the Performance/Analytics Division in the Bureau of Desk Review and Analysis; and

WHEREAS, The Secretary of the Department of Revenue has further requested approval to rename the Revenue HR Office to the Revenue and Insurance HR Office; Therefore, be it

RESOLVED, That the Secretary of the Department of Revenue is hereby granted approval to make the above-mentioned **changes shown by (bold) and an asterisk***; and, be it further

RESOLVED, That the attached organizational chart reflecting the above changes will be submitted to the Legislative Reference Bureau for publication in the *Pennsylvania Bulletin* and *Pennsylvania Code*.

❖ Secretary

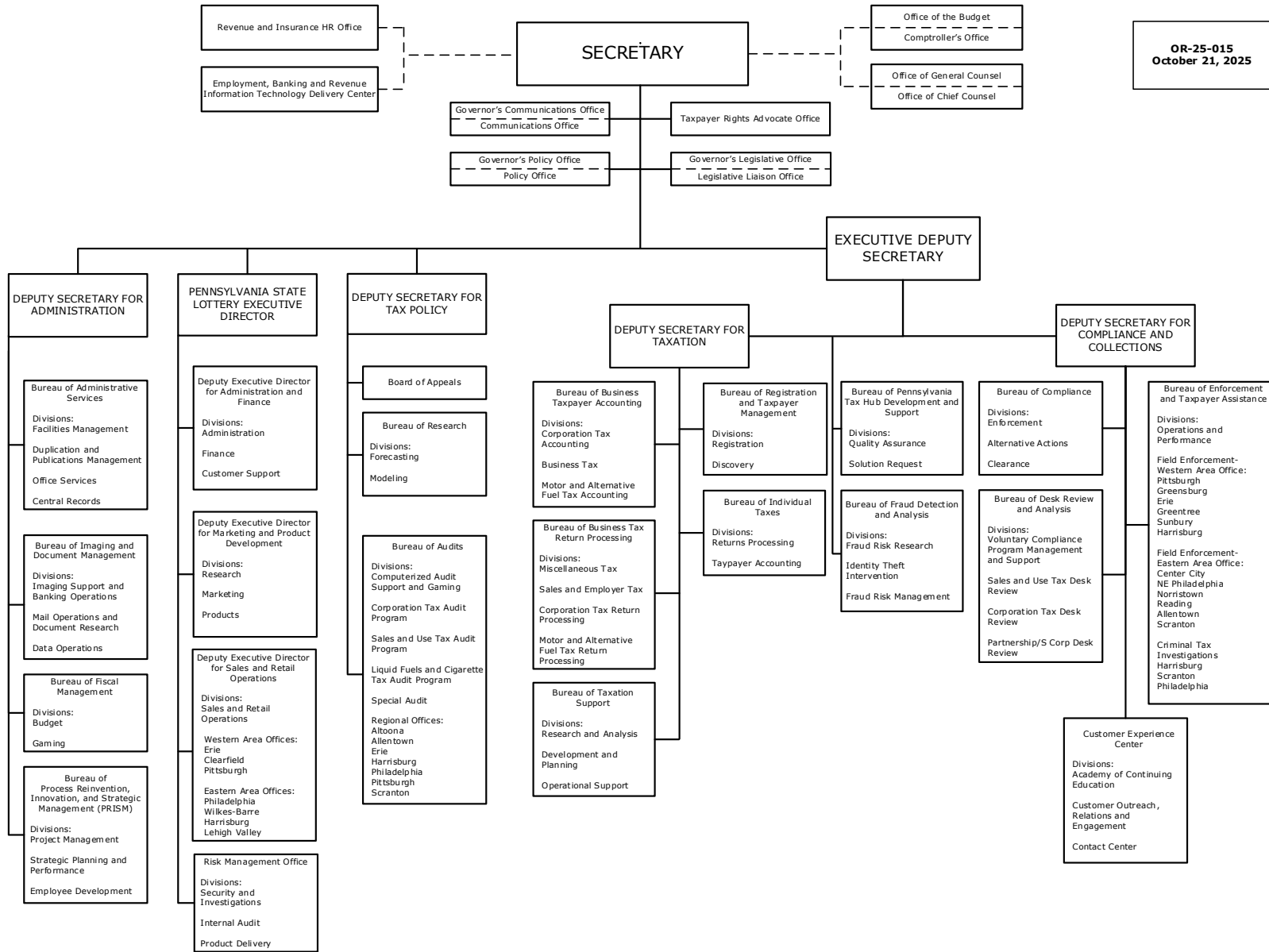
- Communications Office
- Policy Office
- Taxpayer Rights Advocate Office
- Legislative Liaison Office
- Deputy Secretary for Administration

- Bureau of Administrative Services
 - Facilities Management Division
 - Duplication and Publications Management Division
 - Office Services Division
 - Central Records Division
- Bureau of Imaging and Document Management
 - Imaging Support and Banking Operations Division
 - Mail Operations and Document Research Division
 - Data Operations Division
- Bureau of Fiscal Management
 - Budget Division
 - Gaming Division
- Bureau of Process Reinvention, Innovation, and Strategic Management (PRISM)
 - Project Management Division
 - Strategic Planning and Performance Division
 - Employee Development Division
- Pennsylvania State Lottery Executive Director
 - Deputy Executive Director for Administration and Finance
 - Administration Division
 - Finance Division
 - Customer Support Division
 - Deputy Executive Director for Marketing and Product Development
 - Research Division
 - Marketing Division
 - Products Division
 - Deputy Executive Director for Sales and Retail Operations
 - Sales and Retail Operations Division
 - ◆ Western Area Offices
 - Erie
 - Clearfield
 - Pittsburgh
 - ◆ Eastern Area Offices
 - Philadelphia
 - Wilkes-Barre
 - Harrisburg
 - Lehigh Valley
 - Risk Management Office
 - Security and Investigations Division
 - Internal Audit Division
 - Product Delivery Division
- Deputy Secretary for Tax Policy
 - Board of Appeals
 - Bureau of Research

- Forecasting Division
- Modeling Division
- Bureau of Audits
 - ***Computerized Audit Support and Gaming Division**
 - Corporation Tax Audit Program Division
 - ***Sales and Use Tax Audit Program Division**
 - ***Liquid Fuels and Cigarette Tax Audit Program Division**
 - ***Special Audit Division**
 - Altoona Region
 - Allentown Region
 - Erie Region
 - Harrisburg Region
 - Philadelphia Region
 - Pittsburgh Region
 - Scranton Region
- Executive Deputy Secretary
 - Deputy Secretary for Taxation
 - Bureau of Business Taxpayer Accounting
 - ◆ ***Corporation Tax Accounting Division**
 - ◆ ***Business Tax Division**
 - ◆ ***Motor and Alternative Fuel Tax Accounting Division**
 - Bureau of Business Tax Return Processing
 - ◆ Miscellaneous Tax Division
 - ◆ Sales and Employer Tax Division
 - ◆ ***Corporation Tax Return Processing Division**
 - ◆ ***Motor and Alternative Fuel Tax Return Processing Division**
 - Bureau of Taxation Support
 - ◆ Research and Analysis Division
 - ◆ Development and Planning Division
 - ◆ Operational Support Division
 - Bureau of Registration and Taxpayer Management
 - ◆ Registration Division
 - ◆ Discovery Division
 - Bureau of Individual Taxes
 - ◆ Returns Processing Division
 - ◆ Taxpayer Accounting Division
 - Bureau of Pennsylvania Tax Hub Development and Support
 - Quality Assurance Division
 - Solution Request Division
 - Bureau of Fraud Detection and Analysis
 - Fraud Risk Research Division
 - Identity Theft Intervention Division
 - Fraud Risk Management Division

- Deputy Secretary for Compliance and Collections
 - Bureau of Compliance
 - ◆ Enforcement Division
 - ◆ Alternative Actions Division
 - ◆ Clearance Division
 - Bureau of Desk Review and Analysis
 - ◆ Voluntary Compliance Program Management and Support Division
 - ◆ Sales and Use Tax Desk Review Division
 - ◆ Corporation Tax Desk Review Division
 - ◆ Partnership/S Corp Desk Review Division
 - Bureau of Enforcement and Taxpayer Assistance
 - ◆ Operations and Performance Division
 - ◆ Field Enforcement-Western Area Office
 - Pittsburgh
 - Greensburg
 - Erie
 - Greentree
 - Sunbury
 - Harrisburg
 - ◆ Field Enforcement-Eastern Area Office
 - Center City
 - NE Philadelphia
 - Norristown
 - Reading
 - Allentown
 - Scranton
 - ◆ Criminal Tax Investigations Division
 - Harrisburg
 - Scranton
 - Philadelphia
 - Customer Experience Center
 - ◆ Academy of Continuing Education Division
 - ◆ Customer Outreach, Relations and Engagement Division
 - ◆ ***Contact Center Division**

DEPARTMENT OF REVENUE



OR-25-015
October 21, 2025