



pennsylvania
FISH AND BOAT COMMISSION

Reeling in Success Restorative Justice Through Fishing Mentorship

Joseph Gifford, Dauphin County Probation

Scott Shea, Deputy Director of Cumberland County Probation

Rachael Hersh, PFBC SC Region Outreach and Education Coordinator

Mindy Musser, PFBC Environmental Education Specialist



Our Mission



pennsylvania
FISH AND BOAT COMMISSION

Protect



Conserve



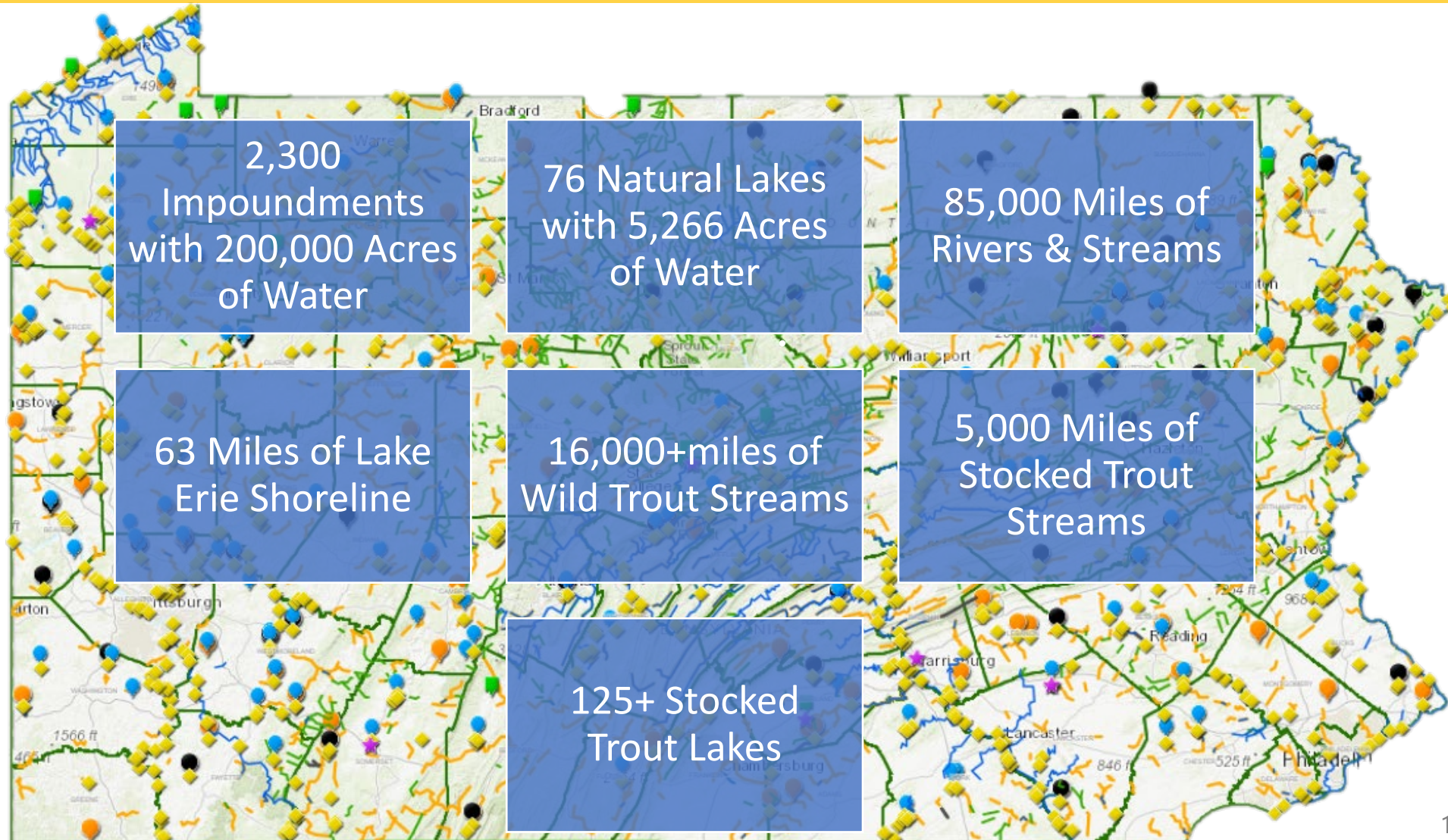
Enhance



Pennsylvania Waterways



pennsylvania
FISH AND BOAT COMMISSION



Why Do We Fish?



pennsylvania
FISH AND BOAT COMMISSION



What is a Fishing Skills Instructor (FSI)?



pennsylvania
FISH AND BOAT COMMISSION



Trained to teach introductory programs:

- **Fishing**
- **Conservation of our PA Waterways**



Fishing Skills Instructor Benefits



pennsylvania
FISH AND BOAT COMMISSION



Program Resources: Equipment & Tackle



pennsylvania
FISH AND BOAT COMMISSION



- Borrow from Partner
- Fishing Tackle Loaner Site (FTLP)
- Borrow from PFBC Region Office



Program Resources: Fishing Tackle Loaner Program

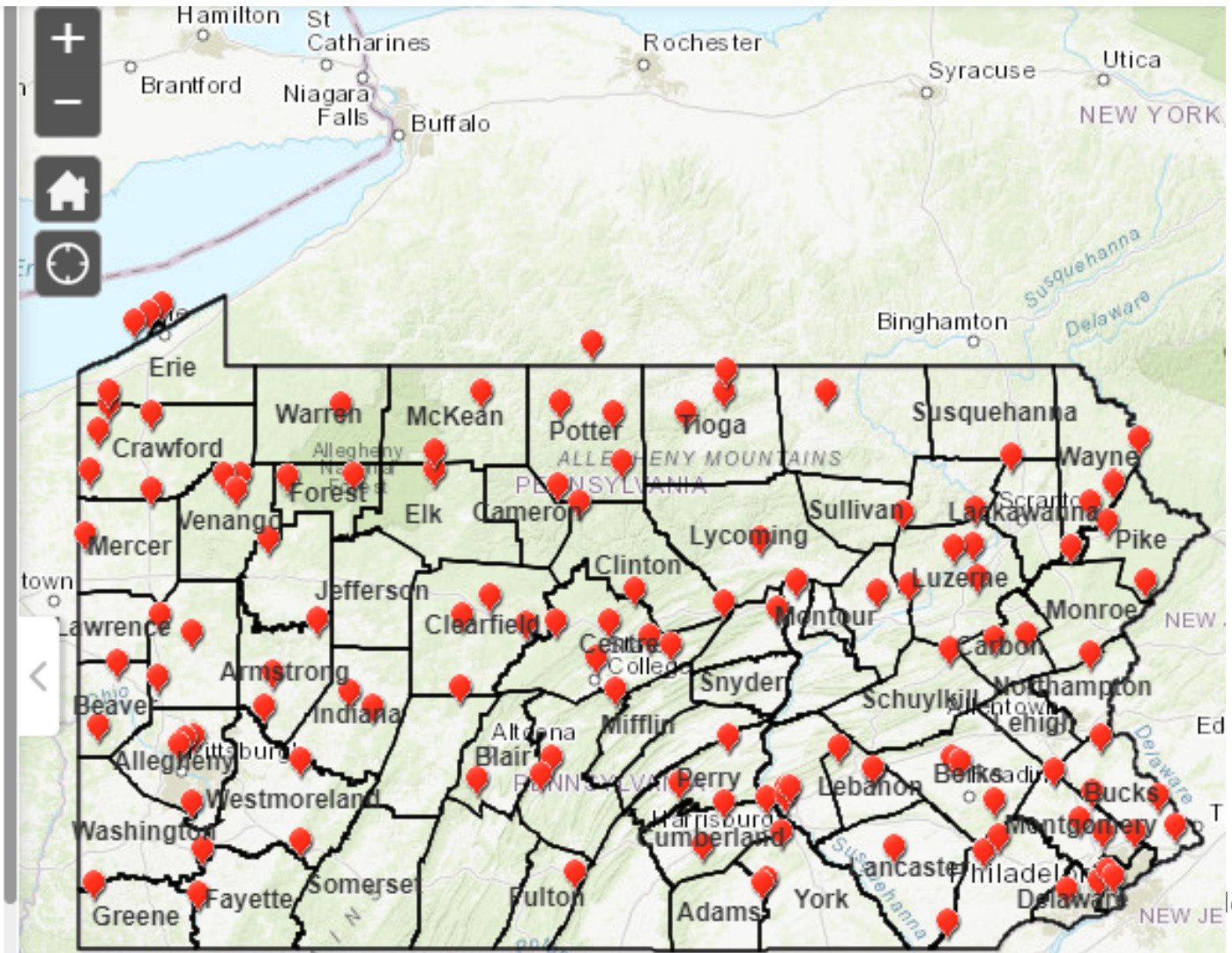


pennsylvania
FISH AND BOAT COMMISSION



The public can go to the locations identified and borrow rods, reels and a tackle box full of hooks and other terminal tackle. This equipment is borrowed in much the same way books are borrowed from a library. Those wanting to borrow gear complete a form and the loan is made. At the end of the loan period the equipment is returned to the site.

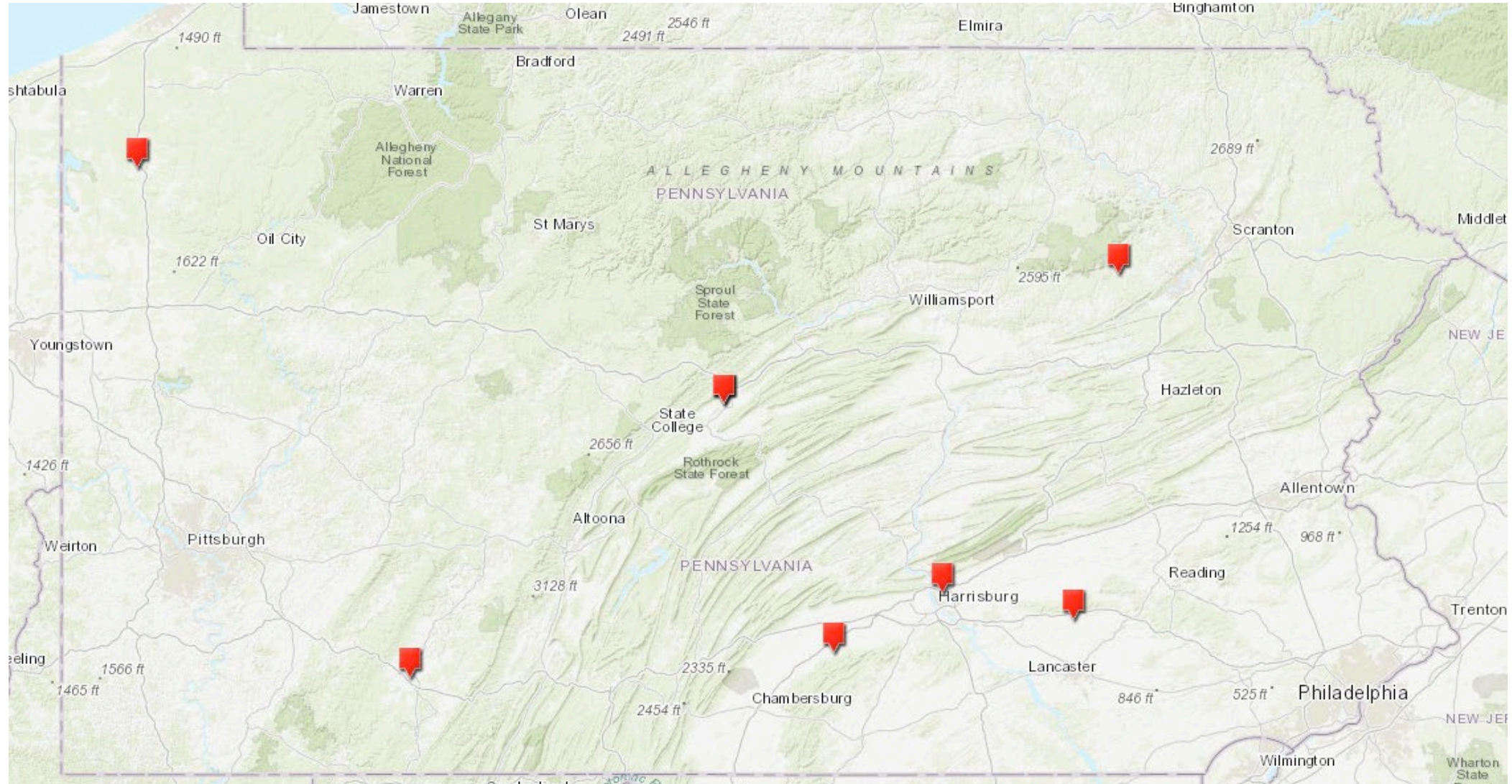
This program is a partnership between the Pennsylvania Fish and Boat Commission, the American Sportfishing Association, and the sponsors listed below. The program is designed to make it easy for anyone to access fishing tackle. Whether you are giving fishing a try for the first time, or returning to a childhood activity, these sites provide free tackle for loan. It's hoped that those making the loans will enjoy fishing so much they are hooked for life. This equipment may also be loaned to groups conducting angler education programs in the community.



Program Resources: Regional BOEM Offices



pennsylvania
FISH AND BOAT COMMISSION



Program Logistics



pennsylvania
FISH AND BOAT COMMISSION

Pre-Program

At least 5-6 weeks prior to program

- Order Publications
- Secure fishing equipment & tackle loans
- Program Registration
- License Exemption
- Program Promotion

Post – Program

- Program Report
- Repair & Return Equipment

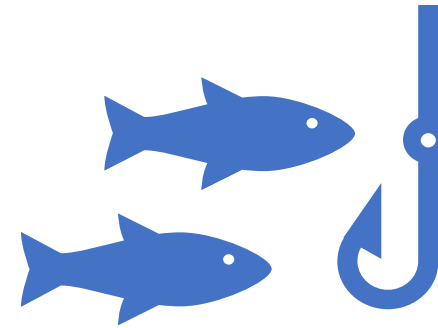
Pre-Program Logistics: Program Registration



pennsylvania
FISH AND BOAT COMMISSION



Register Program at our website:
www.fishandboat.com



License Exemption

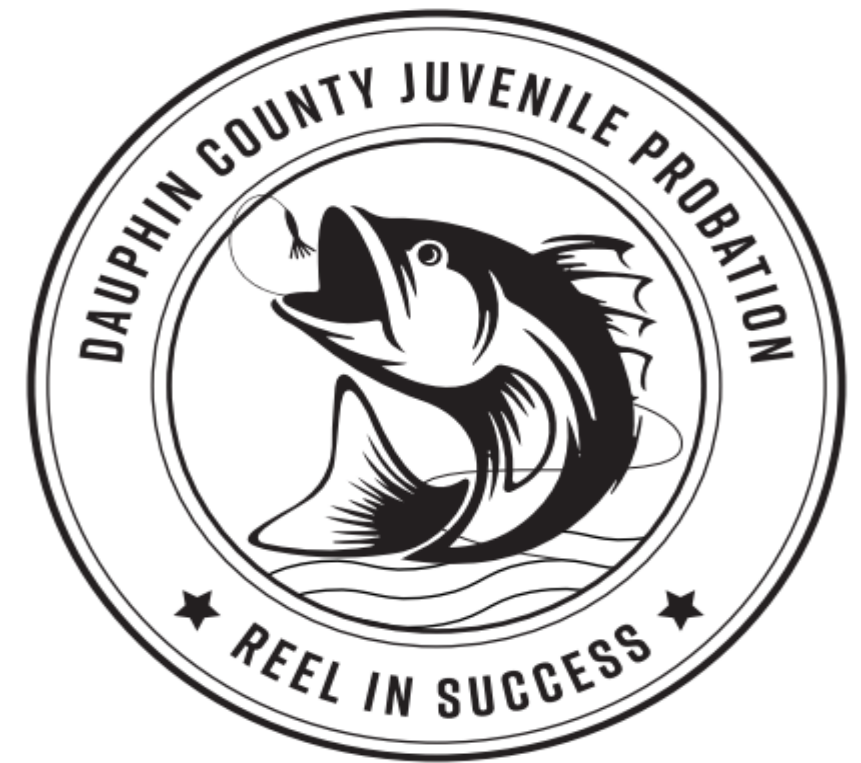
Angler education programs are eligible if the program includes instruction in fishing, and related skills and the time spent on that **education makes up at least 30% of the total program length**

Dauphin County: Probation and Fishing



pennsylvania
FISH AND BOAT COMMISSION

- Partnered with Fish and Boat in 2012
 - Officers attended FSI Workshop
- Mentorship/Community service and competency development
 - Provided CSP hours to juveniles who participate
- Have used as a graduated response
- Fish private water with signed permission or State Parks
- Catch and release



Dauphin County: Referral Process



pennsylvania
FISH AND BOAT COMMISSION

- Utilize intake and YLS to identify lack of positive activities or interests in outdoor activities.
 - Provides an opportunity for a constructive hobby that enhances competency development.
 - Juveniles are referred to the program by probation officers and courts by completing a Fishing Program Referral Form and sending it to the QA unit.
 - An instructor will complete an intake form that provides additional information including medical, physical abilities, and fishing experience.
 - A letter is mailed to juvenile and parent and then contacted by phone by an instructor to finalize transportation.
 - A discharge form is completed by an instructor and sent to the QA unit.

Dauphin County: Program Description



pennsylvania
FISH AND BOAT COMMISSION

- Fish from May until October serving 50 kids per year
 - Each session consists of 4 probation officers trained as PA FSI
 - Strong adult to juvenile ratio for safety
 - Each session consists of 3 weeks of in-person instruction in classroom and outdoor setting
 - Each week has a lesson plan and learning objective
 - Week 1: safety and outdoors, demonstrating skills
 - Week 2: appreciating clean water and demonstrating skills
 - Week 3: releasing catch and demonstrating skills
- Once a juvenile participates in three events, we give them a fishing rod and a tackle box.



Dauphin County: Details



pennsylvania
FISH AND BOAT COMMISSION

- Transportation- Designated Fishing SUV used to transport four juveniles. A second vehicle may be used. Two probation officers will be in each vehicle for transport. Juveniles and families may provide their own transportation.
- Fishing locations must have hand washing facilities and restrooms. Hand sanitizer will always be readily available for use.
- Meals are provided for each fishing event that occurs during the meal period.
- All personnel will be first aid and CPR trained. PFBC will certify instructors as Fishing Skills Instructors

Cumberland County Mentor Fishing Program Overview



pennsylvania
FISH AND BOAT COMMISSION

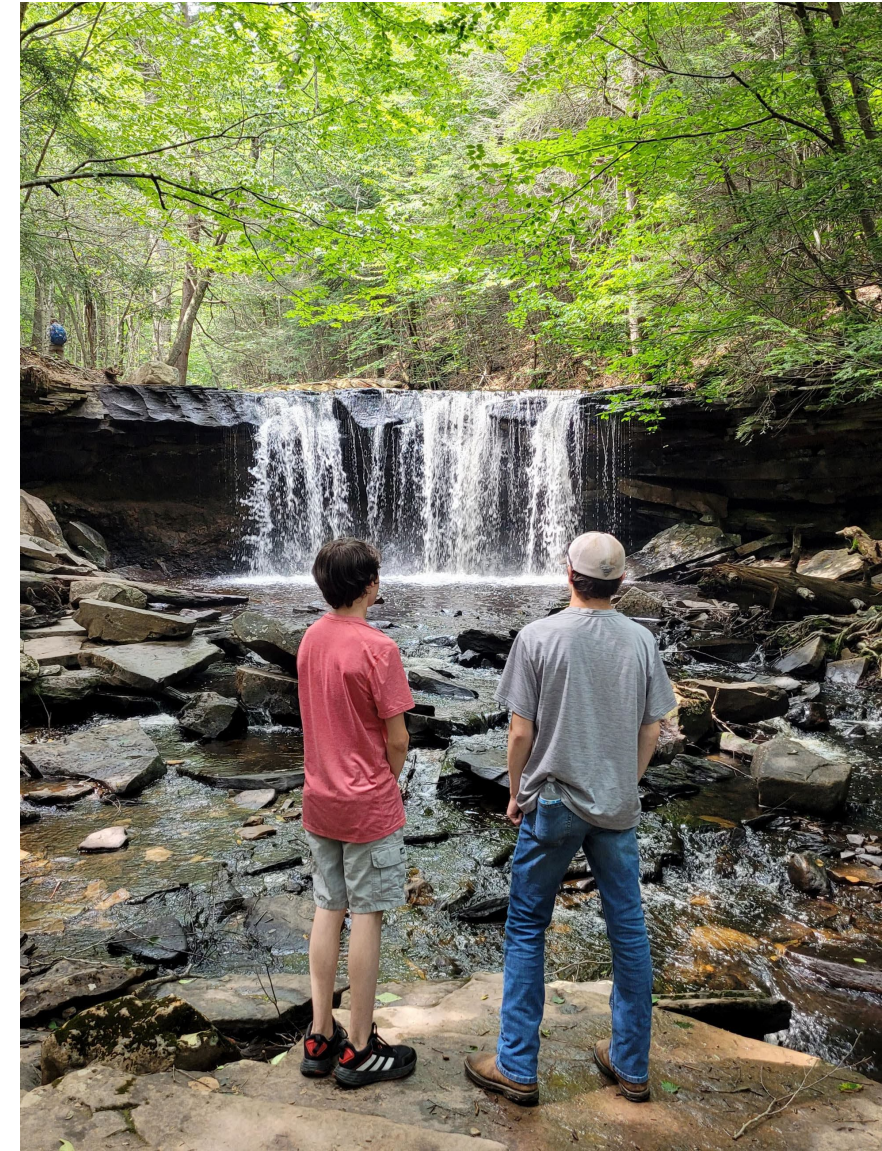
- The Cumberland County Juvenile Probation Department began a Mentor Fishing Program in 2024 with the goal of matching youth to an adult mentor and teaching them about fish habitats, water safety, equipment and techniques, outdoor manners and protecting our water resources.
- A secondary goal of the program is to enhance our Evidence Based Practices activities that address competency development in our youth by providing a positive outdoor activity to pursue.
- We have experienced improved professional alliance and overall behavior among many of the youth who have participated in the program.
- This year we have mentored over twenty (20) youth at various locations in Pennsylvania including Camp Hebron, Opossum Lake, Yellow Breeches Creek, Pinchot Lake, Lakeside Marine, Lake Jean, and Cowans Gap Lake.
- We appreciate the overwhelming support by the families and youth who we have served and appreciate the partnership with the Pennsylvania Fish and Boat Commission, Cumberland Valley Trout Unlimited and our private fishing locations. We also partner with other mentor fishing programs that have been established in Dauphin and Lebanon County.

Cumberland County: Program Goals



pennsylvania
FISH AND BOAT COMMISSION

- Educate Youth
 - Fish Habitats
 - Water Safety
 - Equipment and Fishing Techniques
 - Outdoor Manners
 - Protecting our Water Resources
- Provide a Positive Outdoor Activity for youth
 - Teach a new skill
 - Experience a new activity
 - Allow for future use of equipment to the youth and family
- Providing Mentorship to Youth
 - Builds professional alliance between youth and mentors
 - Improved communication by youth
 - Increase buy-in for future skill building activities
 - Decreased behavior problems in the home, school and community



Cumberland County: 2024 Highlights



pennsylvania
FISH AND BOAT COMMISSION

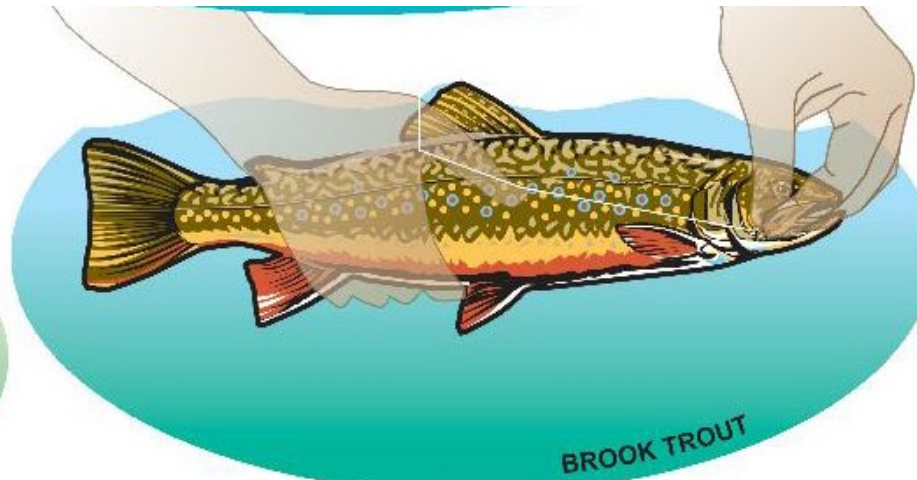
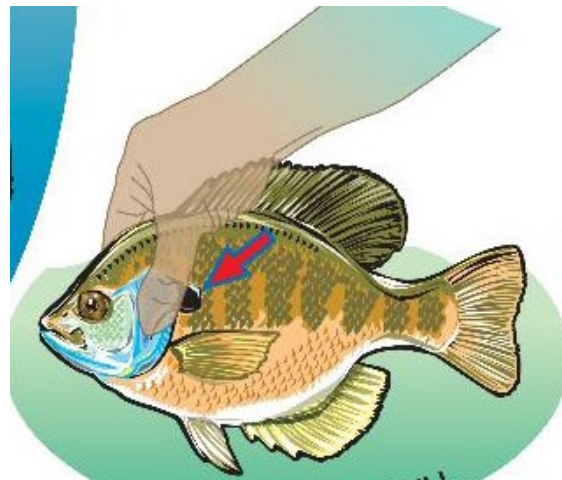
- Partnered with the Pennsylvania Fish and Boat Commission to get access to fishing equipment, tackle and training.
- Trained 4 Probation Officers through PAF&B Instructor Course
- Secured financial support through our CYS IL funds
- Cumberland County became an equipment loaner site for residence of the county
- Mentored 20 youth at 7 different locations in Pennsylvania
- Held a Fishing Derby Day with neighboring Dauphin County youth
- Purchased needed supplies and acquired an Enclosed Trailer for future community events

Break-Out Group Stations



pennsylvania
FISH AND BOAT COMMISSION

1. Form 3 groups
2. Each group will rotate through all stations
3. Groups will rotate after 10 minutes
 - Rigging and Knots
 - Casting
 - Fish Handling



Next Steps For You



pennsylvania
FISH AND BOAT COMMISSION

- Contact Your Regional PFBC Education Staff
 - Upcoming FSI Classes
 - Fishing Tackle Loaner Program Application
- Attend a Family Fishing Program
- Schedule & Provide Your Own Programs



PFBC Regional Contacts



pennsylvania
FISH AND BOAT COMMISSION

Northwest	Northcentral	Northeast
Jessica Rohrdanz	Amidea Daniel	Allan Schreffler
ra-nwedureach@pa.gov	ra-ncedureach@pa.gov	ra-needureach@pa.gov
814-336-2426	814-359-5127	570-477-2206
Southwest	Southcentral	Southeast
Mandy Smith	Rachael Hersh	Andy Desko
ra-swedureach@pa.gov	ra-scedureach@pa.gov	ra-seedureach@pa.gov
814-443-9841	717-75-7919	215-968-3631