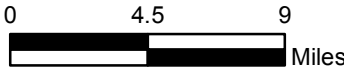
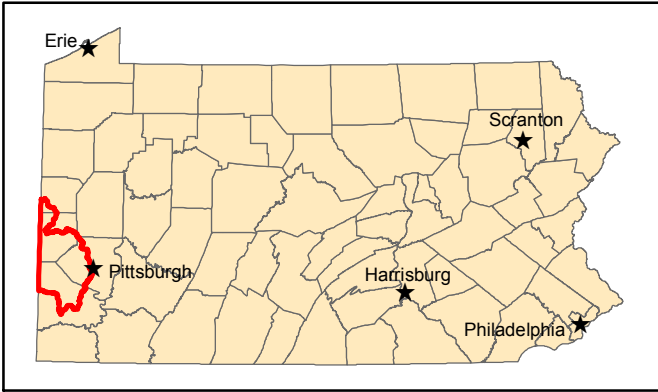
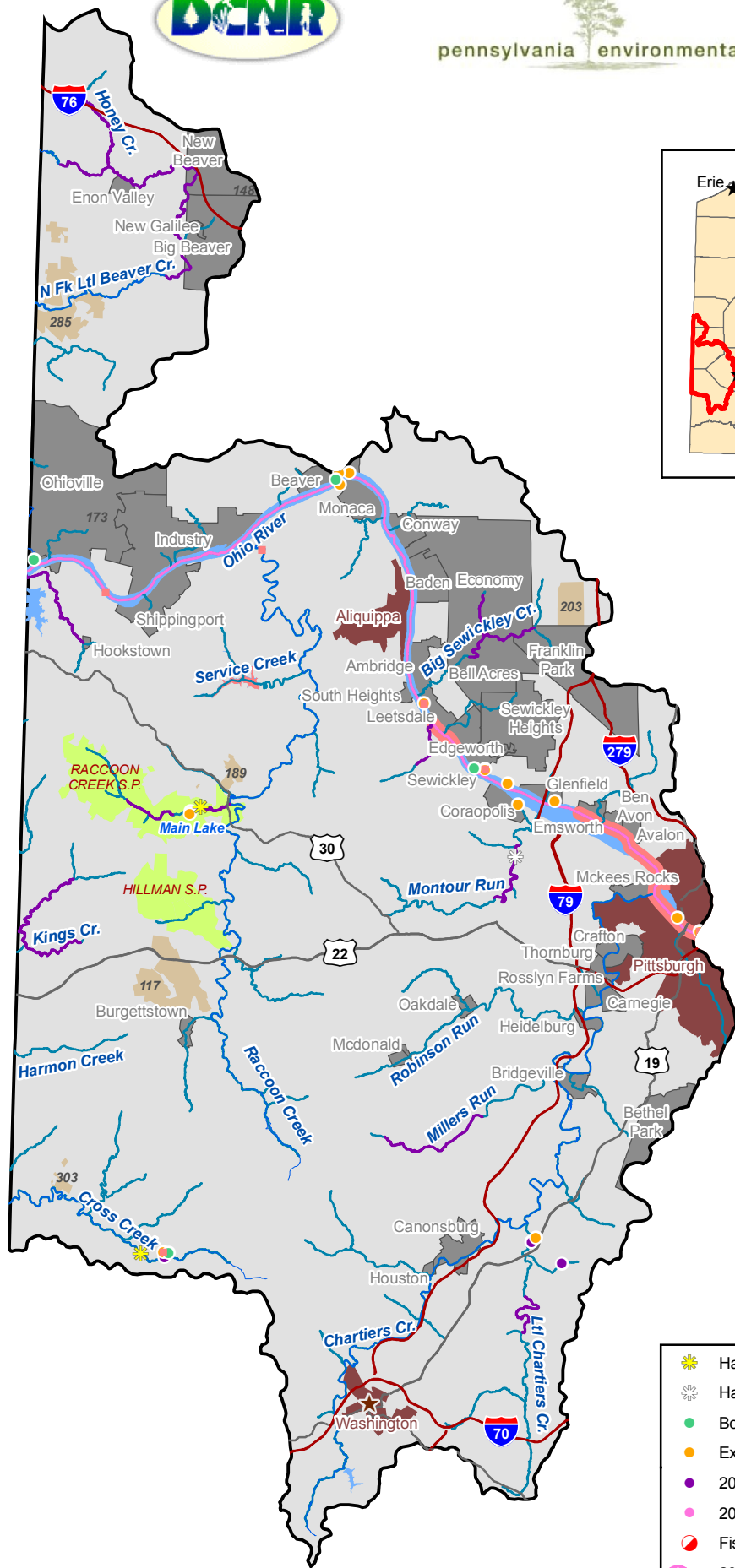


MAP 47. Pennsylvania Fishing and Boating Access Strategy Upper Ohio Watershed



- | | |
|-----------------------------------|--------------------------|
| Habitat Projects - Lakes | 2009 Trout Stocked Water |
| Habitat Projects - Flowing Waters | Water Trails |
| Boating Access Grant Location | Improvement Locations |
| Existing Accesses | State Gamelands |
| 2009 WW/CW Stocked Lakes | Borough |
| 2009 Trout Stocked Lakes | City |
| Fish Passage Projects | State Parks |
| 2009 WW/CW Stocked Water | State Forest |

Watershed: Upper Ohio

PFBC Region: Southeast

Priority: 26

General Description: Located in Washington, Allegheny, Beaver and Lawrence counties, this 622,680 acre watershed features the Ohio River. The Commission stocks the Ohio River, Honey Creek, N. Fork Little Beaver Creek, Millers Run, Little Chartiers Creek, Kings Creek, Big Sewickley Cree, Montour Run, Cross Creek Lake, Peters Lake Reservoir, and Boone Reservoir. Little Sewickley Creek is designated natural trout reproduction. The Montour Run Watershed, Upper Chartiers Creek, and Lower Chartiers Creek river conservation plans cover portions of the watershed.

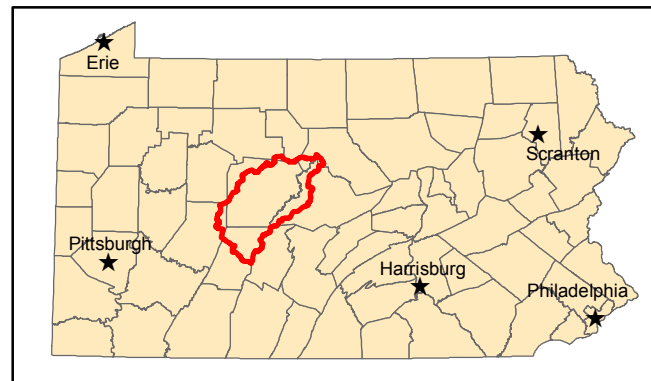
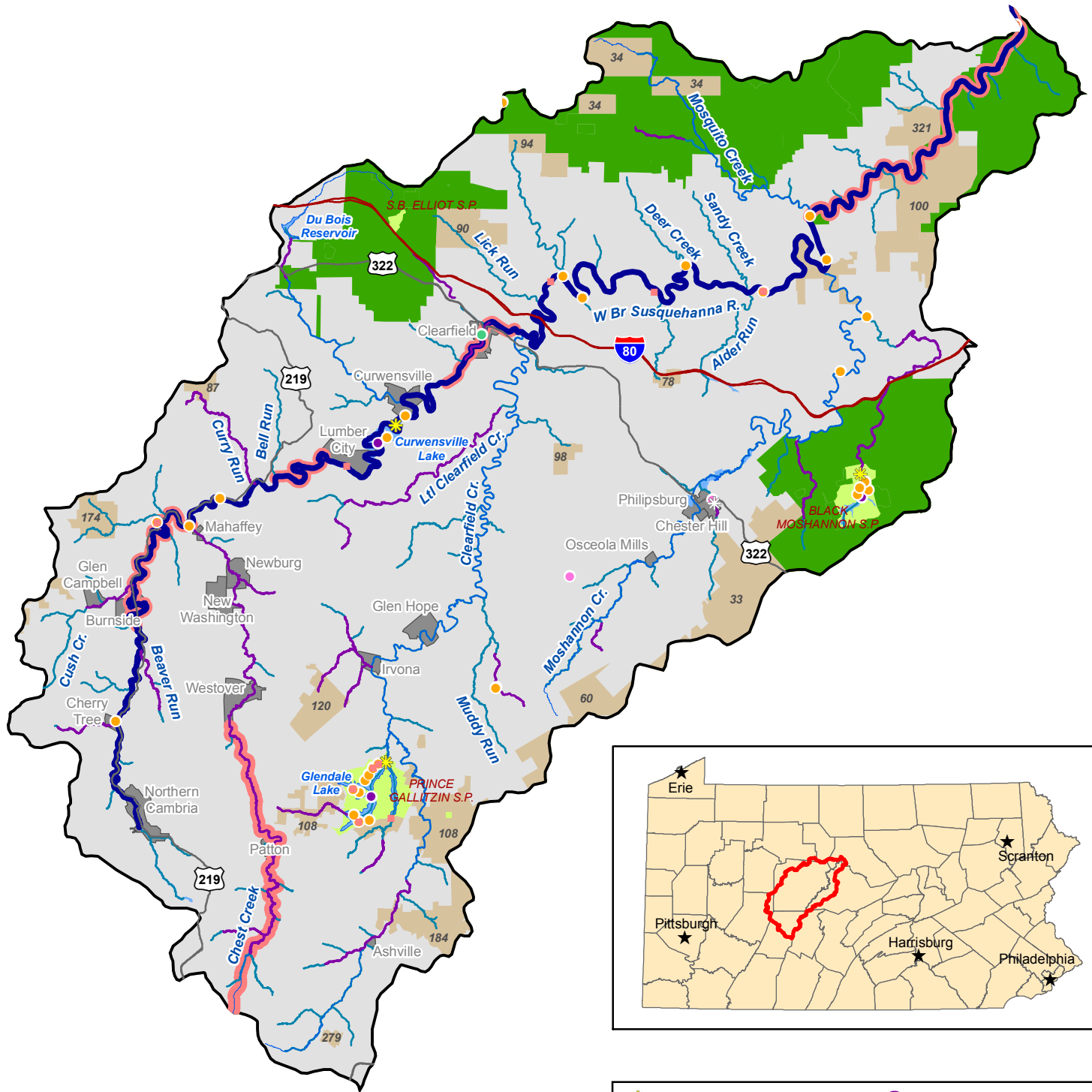
Stakeholder Input: The Ohio River below the Montgomery Dam and the Three Rivers area are recommended for additional access. A reclaimed brownfield between Lettsdale and Edgeworth could be a possible access location on the Ohio River. The Ambridge Reservoir access is currently closed. Raccoon Creek was recommended for additional boating access.

CRITERIA	Evaluation Result	SCORE	Fishing Access	Boating Access
Linear Miles Stocked	57.82	3	3	
Number Stocked Lakes	2	2	2	2
Number Boating Facility Grant	4	4		4
Number Fish Passage/Habitat Projects	3	2	2	
Water Trail/River Conservation Plan (RCP)	RCP	1	1	1
Number Access Improvements Identified by Stakeholders	12	3	3	3
Total Population	649,341	4	4	4
Population Change	0.36	1	1	1
Species Special Concern Density Per Square Mile	0.17	4	4	4
Percent Public Land	3.322	2	2	2
Number Access/10 Miles of Stream Order \geq 3	0.276	1	1	1
Current Number Fish Licenses	36,488	5	5	
Current Number Boat Registrants	14,581	5		5
Current Fish Licensees - Percent of Total Population	5.62	2	2	
Current Boat Registrants - Percent of Total Population	2.25	2		2
WW/CW Linear Miles Stocked	40.59	4	4	
WW/CW Trout Stocked Lakes	4	3	3	3
Number Accesses/10 Miles of Stream Order \geq 5	1.062	2		2
Total Score		50	37	34
Bonus- Funding Available		0	0	0
Final Score		50	37	34

MAP 48. Pennsylvania Fishing and Boating Access Strategy Upper West Branch Susquehanna Watershed



pennsylvania environmental council



- | | |
|-----------------------------------|--------------------------|
| Habitat Projects - Lakes | 2009 Trout Stocked Water |
| Habitat Projects - Flowing Waters | Water Trails |
| Boating Access Grant Location | Improvement Locations |
| Existing Accesses | Borough |
| 2009 WW/CW Stocked Lakes | City |
| 2009 Trout Stocked Lakes | State Parks |
| Fish Passage Projects | State Gamelands |
| 2009 WW/CW Stocked Water | State Forest |

Watershed: Upper West Branch Susquehanna

PFBC Region: Northcentral

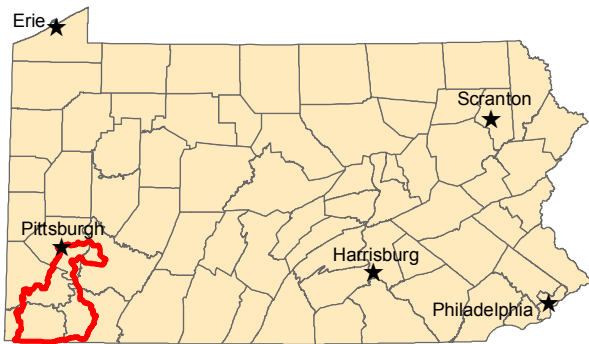
Priority: 27

General Description: This 1,022,970 acre watershed is located primarily in Clearfield County but also falls within portions of Centre, Cambria and Clinton Counties. The West Branch of the Susquehanna River and its tributaries provide boating and fishing opportunities. The West Branch Water Trail flows through the entire watershed. The Commission stocks portions of four streams (West Branch, Clearfield, Chest and Black Moshannon creeks) and three dam locations. Cole Run and Twelvemile Run are classified as wilderness trout streams. Tributaries of Chest Creek and Mosquito Creek have trout natural reproduction occurring. Moshannon and Sproul State Forests, Black Moshannon and Prince Gallitzen State Parks, and several Game Lands are located within the watershed. The *North Central Greenway Plan* is currently under development. The *West Branch Susquehanna River Water Trail Conservation and Stewardship Plan* provides detailed analysis of access opportunities.

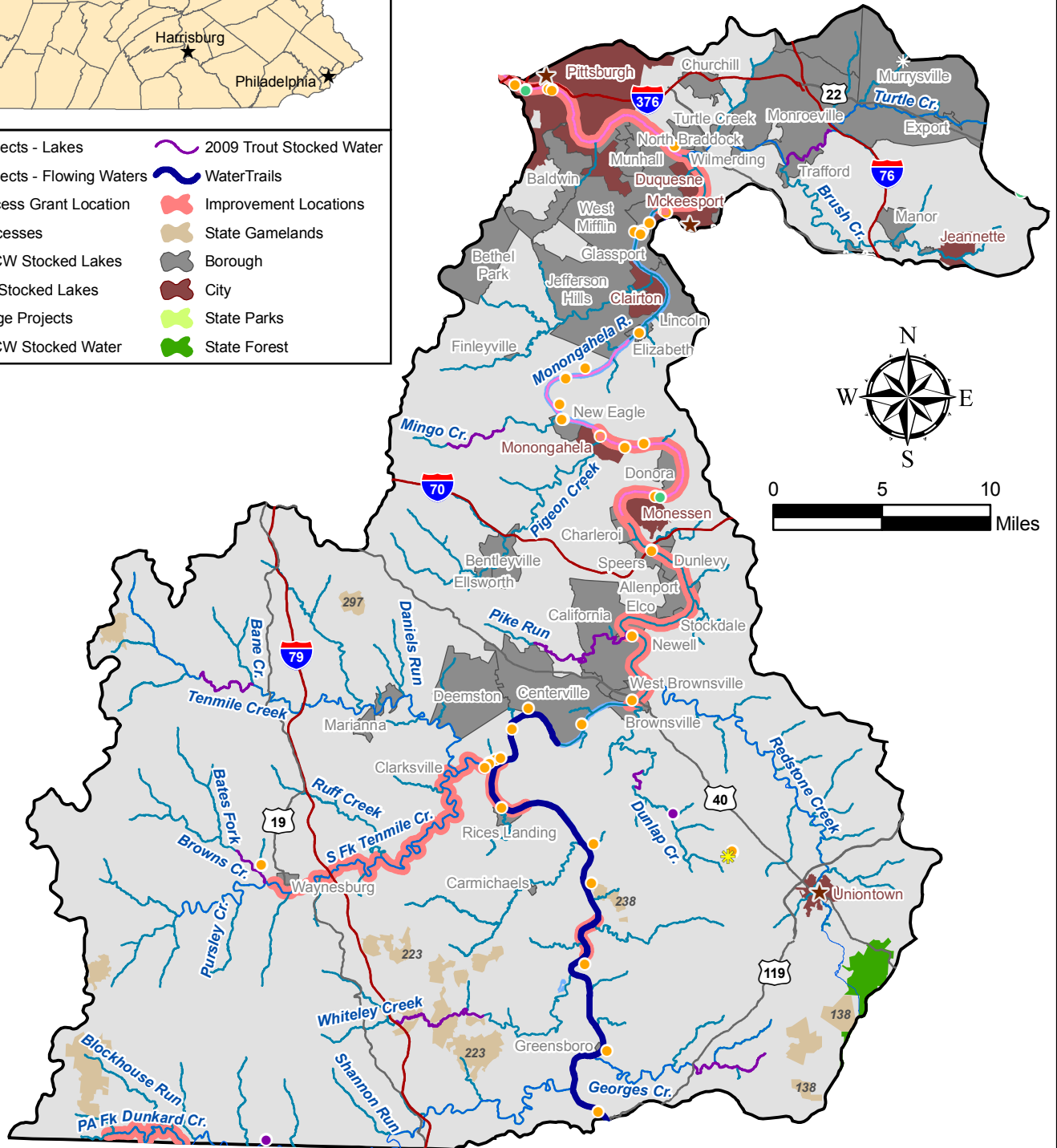
Stakeholder Input: Stakeholders noted the West Branch of the Susquehanna River could use additional access from Mahaffrey to Cherry Tree and at Lauder City. Chest Creek was noted for needing fishing access at Abutes Run Recreation Area. Glendale Lake was identified as needing launch improvements at several locations. Stakeholders recommended that seventeen miles of the West Branch of the Susquehanna River from the confluence of the First Fork of Sinnemahoning Creek to Mosquito Creek remain a wilderness experience.

CRITERIA	Evaluation Result	SCORE	Fishing Access	Boating Access
Linear Miles Stocked	144.83	5	5	
Number Stocked Lakes	3	3	3	3
Number BFG	1	1		1
Number Fish Passage/Habitat Projects	6	3	3	
Water Trail/River Conservation Plan	Both	3	3	3
Number Access Improvements Identified by Stakeholders	22	5	5	5
Total Population	102,550	2	2	2
Population Change	-5.52	0	0	0
SSC Density	0.02	1	1	1
Percent Public Land	24.690	4	4	4
Number Access/10 Miles of Stream Order \geq 3	0.430	3	3	3
Current Number Fish Licenses	12,590	3	3	
Current Number Boat Registrants	3,343	3		3
Current Fish Licensees - Percent of Total Population	12.28	5	5	
Current Boat Registrants - Percent of Total Population	3.26	3		3
WW/CW Linear Miles Stocked	0.00	0	0	
WW/CW Trout Stocked Lakes	6	4	4	4
Number Accesses/10 miles of Stream Order \geq 5	1.341	2		2
Total Score		50	41	34
Bonus- Funding Available		0	0	0
Final Score		50	41	34

MAP 49. Pennsylvania Fishing and Boating Access Strategy Lower Monongahela Watershed



- | | | | |
|--|-----------------------------------|--|--------------------------|
| | Habitat Projects - Lakes | | 2009 Trout Stocked Water |
| | Habitat Projects - Flowing Waters | | Water Trails |
| | Boating Access Grant Location | | Improvement Locations |
| | Existing Accesses | | State Gamelands |
| | 2009 WW/CW Stocked Lakes | | Borough |
| | 2009 Trout Stocked Lakes | | City |
| | Fish Passage Projects | | State Parks |
| | 2009 WW/CW Stocked Water | | State Forest |



Watershed: Lower Monongahela

PFBC Region: Southwest

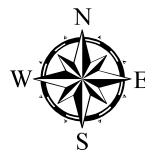
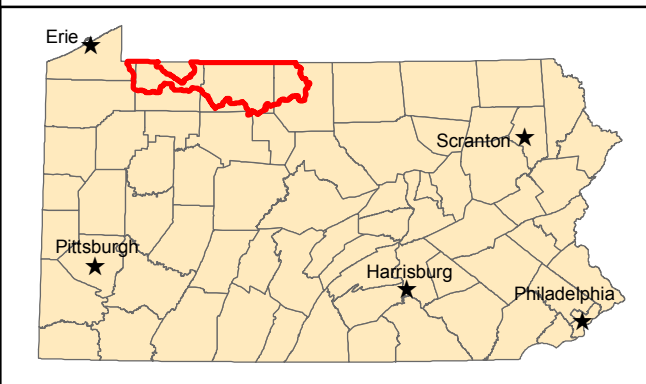
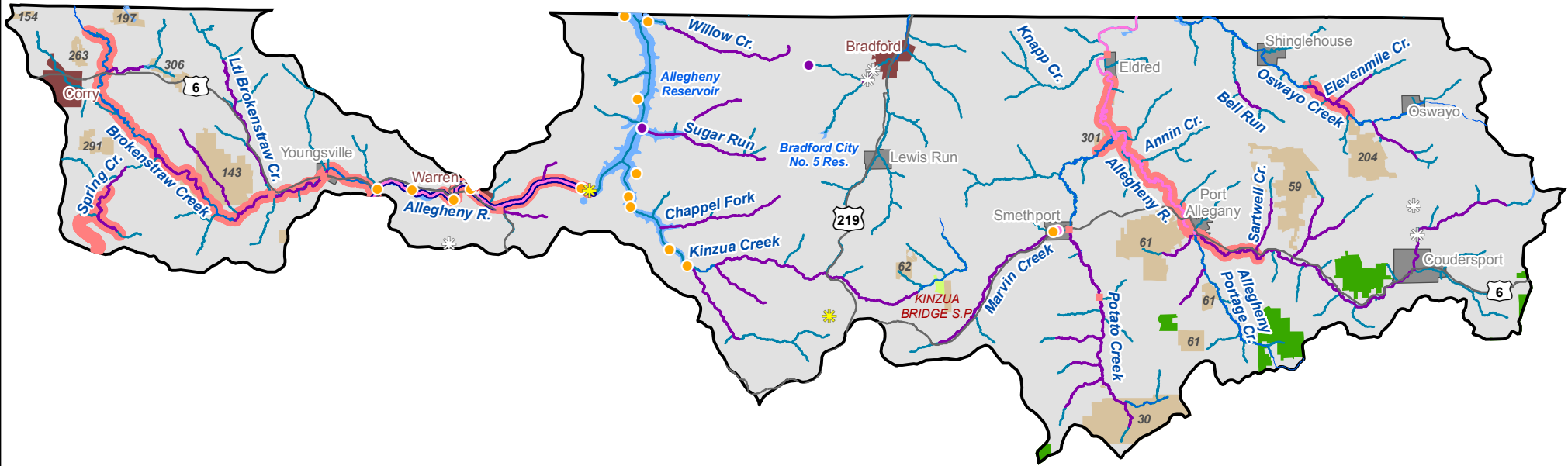
Priority: 28

General Description: Located in Greene, Washington, Allegheny, Westmoreland and Fayette counties, this sub-watershed covers 869,442 acres. The Monongahela River Water Trail begins in Centerville and continues to the Pennsylvania state line. The Dunkard Creek, Monongahela River and Monongahela River at Brownsville River Conservation plans cover portions of the watershed. Brownfield Hollow, a tributary of Mountain Creek, is designated natural trout reproduction. The Commission stocks Lake Wilma, Filbert Pond, Pike Run, Browns Creek, Turtle Creek, Georges Creek, Whiteley Creek, and the Monongahela River. A portion of DCNR’s Laurel Highlands Conservation Landscape Initiative is within the watershed.

Stakeholder Input: Access improvement was recommended for the Monongahela River from McKeesport to Pittsburg, Brownsville to Monongahela and at the Greensboro Pool. The McKeesport Access on the Monongahela River was listed for paving improvement. The potential exists for a new canoe/kayak launch between Ten Mile Creek and Rice Landing on the Monongahela. From Clarksville to Waynesburg on Ten Mile Creek additional access locations are needed according to a stakeholder.

CRITERIA	Evaluation Result	SCORE	Fishing Access	Boating Access
Linear Miles Stocked	34.73	2	2	
Number Stocked Lakes	2	2	2	2
Number Boating Facility Grant	2	2		2
Number Fish Passage/Habitat Projects	2	2	2	
Water Trail/River Conservation Plan (RCP)	Both	3	3	3
Number Access Improvements Identified by Stakeholders	12	3	3	3
Total Population	767,201	4	4	4
Population Change	-3.65	0	0	0
Species Special Concern Density Per Square Mile	0.07	2	2	2
Percent Public Land	2.112	1	1	1
Number Accesses/10 Miles of Stream Order \geq 3	0.586	4	4	4
Current Number Fish Licenses	43,158	5	5	
Current Number Boat Registrants	14,941	5		5
Current Fish Licensees - Percent of Total Population	5.63	2	2	
Current Boat Registrants - Percent of Total Population	1.95	1		1
WW/CW Linear Miles Stocked	29.85	3	3	
WW/CW Trout Stocked Lakes	4	3	3	3
Number Accesses/10 Miles of Stream Order \geq 5	2.328	4		4
Total Score		48	36	34
Bonus- Funding Available		0	0	0
Final Score		48	36	34

MAP 50. Pennsylvania Fishing and Boating Access Strategy Upper Allegheny Watershed



- | | |
|-----------------------------------|--------------------------|
| Habitat Projects - Lakes | 2009 Trout Stocked Water |
| Habitat Projects - Flowing Waters | WaterTrails |
| Boating Access Grant Location | Improvement Locations |
| Existing Accesses | Borough |
| 2009 WW/CW Stocked Lakes | City |
| 2009 Trout Stocked Lakes | State Parks |
| Fish Passage Projects | State Gamelands |
| 2009 WW/CW Stocked Water | State Forest |

Watershed: Upper Allegheny

PFBC Region: Northcentral and Northwest

Priority: 29

General Description: Located in Warren, McKean, and Potter counties, this 986,736 acre watershed hosts portions of the Allegheny River. A portion of the Middle Allegheny River Water Trail is located within the watershed. The watershed ranks 8th overall in linear miles stocked with streams and 3 lakes stocked by the Commission. Funding for access improvements may be available through the Sinnemahoning Creek Water Restoration funds (SCWR) for locations in Potter and McKean counties. The *North Central Greenway Plan* is currently in development. Stretches of Kinuza Creek, Chappel Fork, Sugar Run, Willow Creek, Marvin Creek, Potato Creek, Allegheny Portage Creek, Oswayo Creek and the Allegheny River are designated natural trout reproduction. The South Branch Kinuza Creek is designated a wilderness trout stream.

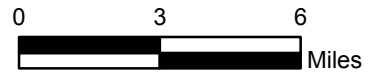
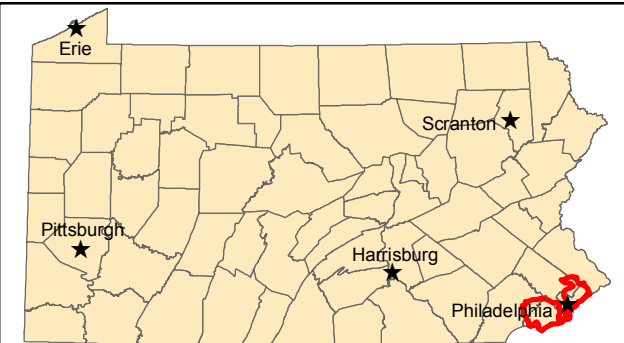
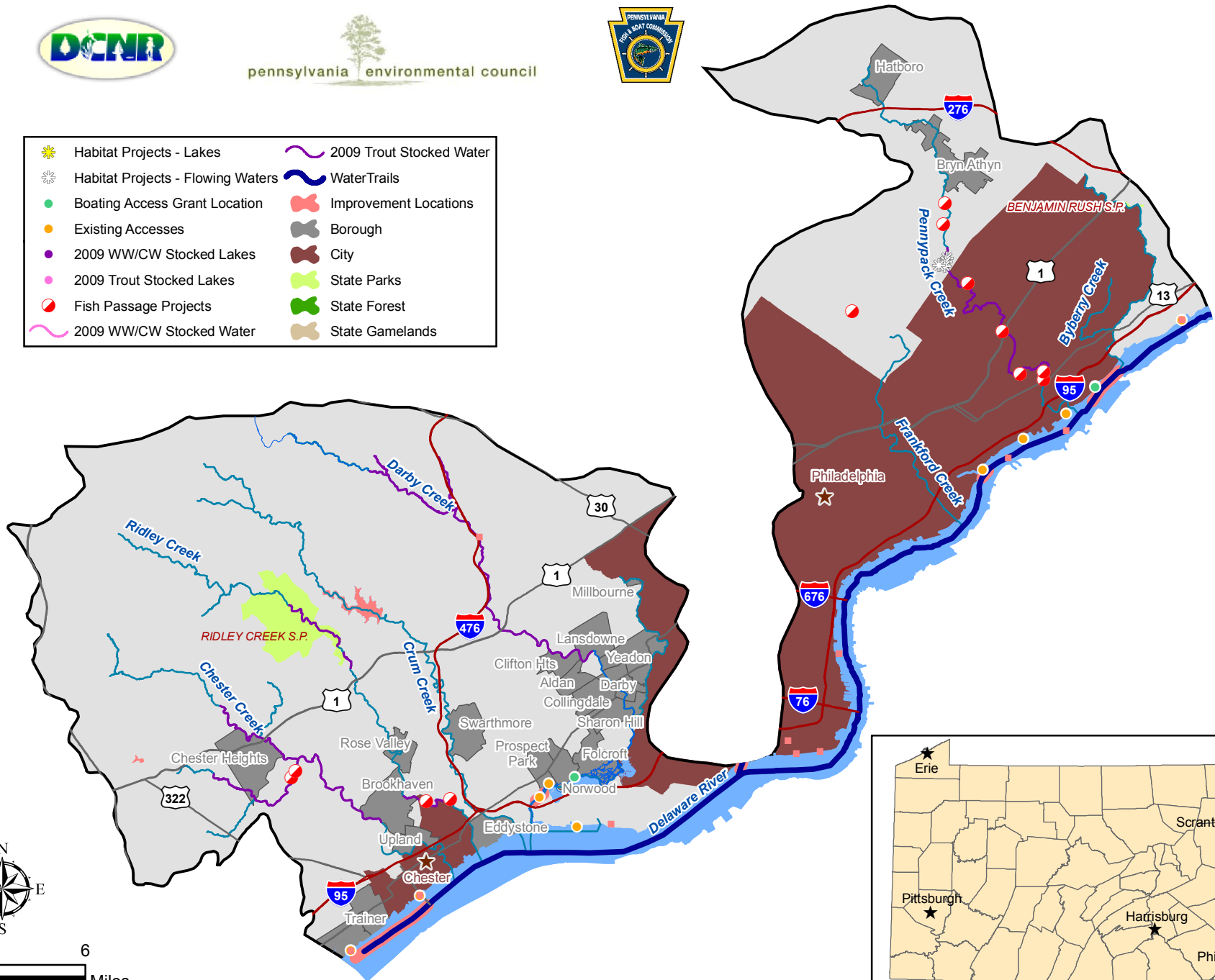
Stakeholder Input: Additional access was recommended for the Allegheny River from Kinazu Dam to Warren. Paddler camping access was suggested on the Allegheny for Karthus to Lock Haven. Wading access is needed on Oswayo Creek from Game Land #234 to Wildcat Creek. Brokenstraw Creek needs wading and boating access. The Crosby ball fields could be an access point for Potato Creek as well as the land at Rt. 6 Bridge at Smethport. Wading access was recommended for Spring Creek.

CRITERIA	Evaluation Result	SCORE	Fishing Access	Boating Access
Linear Miles Stocked	214.31	5	5	
Number Stocked Lakes	3	3	3	3
Number BFG	0	0		0
Number Fish Passage/Habitat Projects	7	3	3	3
Water Trail/River Conservation Plan (RCP)	WT	2	2	2
Number Access Improvements Identified by Stakeholders	25	5	5	5
Total Population	80,738	2	2	2
Population Change	-6.94	0	0	0
SSC Density	0.12	3	3	3
Percent Public Land	5.608	2	2	2
Number Accesses/10 Miles of Stream Order ≥ 3	0.227	1	1	1
Current Number Fish Licenses	7,289	2	2	
Current Number Boat Registrants	2,994	3		3
Current Fish Licensees - Percent of Total Population	9.03	4	4	
Current Boat Registrants - Percent of Total Population	3.71	3		3
WW/CW Linear Miles Stocked	43.45	4	4	
WW/CW Trout Stocked Lakes	3	2	2	2
Number Accesses/10 Miles of Stream Order ≥ 5	0.997	1		1
Total Score		45	38	30
Bonus- Funding Available	SCWR	5	5	5
Final Score		48	43	35

MAP 51. Pennsylvania Fishing and Boating Access Strategy Lower Delaware Watershed



- | | |
|-----------------------------------|--------------------------|
| Habitat Projects - Lakes | 2009 Trout Stocked Water |
| Habitat Projects - Flowing Waters | Water Trails |
| Boating Access Grant Location | Improvement Locations |
| Existing Accesses | Borough |
| 2009 WW/CW Stocked Lakes | City |
| 2009 Trout Stocked Lakes | State Parks |
| Fish Passage Projects | State Forest |
| 2009 WW/CW Stocked Water | State Gamelands |



Watershed: Lower Delaware

PFBC Region: Southeast

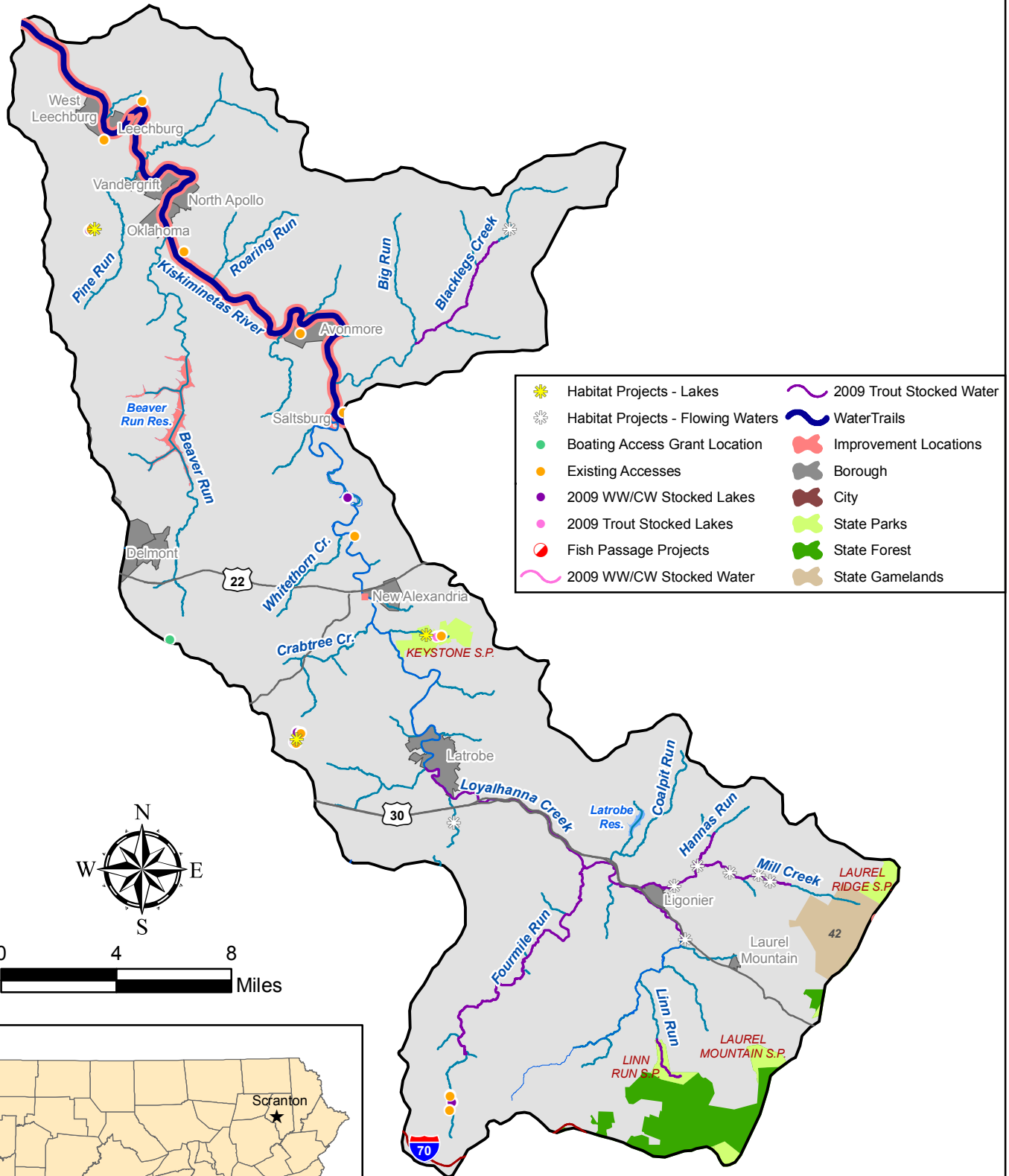
Priority: 30

General Description: Ranking number one in population, this 246,060 acre watershed is one of the most densely populated in the Commonwealth. Located in Delaware, Montgomery, and Philadelphia counties, the Tidal Delaware Water Trail continues through this watershed. The Delaware River City Corporation is implementing the *North Delaware Riverfront Greenway Master Plan* covering the river from Penn Treaty Park to the Bucks County Line. *The East Coast Greenway Plan* also includes portions of the Delaware River. The Commission stocks Darby, Ithan, Chester and Ridley Creeks. Ithan and Crum Creeks have stretches designated as natural trout reproduction.

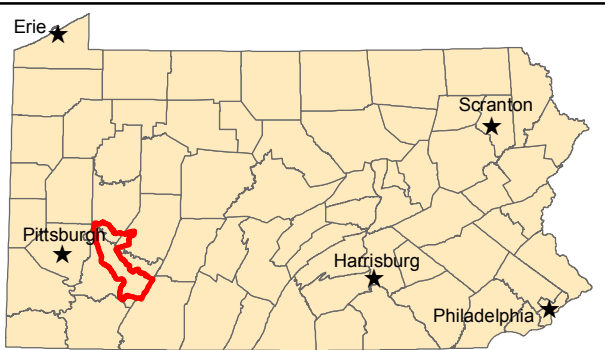
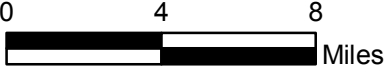
Stakeholder Input: The majority of the access improvements identified by stakeholders were on the Delaware River, both potential new locations and improvement to existing public sites. A new access location was suggested for a Darby Creek stretch that is designated natural trout reproduction.

CRITERIA	Evaluation Result	SCORE	Fishing Access	Boating Access
Linear Miles Stocked	41.47	2	2	
Number Stocked Lakes	0	0	0	0
Number Boating Facility Grants	2	2		2
Number Fish Passage/Habitat Projects	16	5	5	
Water Trail/River Conservation Plan (RCP)	Water Trail	2	2	2
Number Access Improvements Identified by Stakeholders	18	4	4	4
Total Population	1,923,572	6	6	6
Population Change	-0.10	0	0	0
Species Special Concern Density Per Square Mile	0.16	4	4	4
Percent Public Land	1.215	1	1	1
Number Accesses/10 Miles of Stream Order \geq 3	0.570	4	4	4
Current Number Fish Licenses	31,011	5	5	
Current Number Boat Registrants	10,746	5		5
Current Fish Licensees - Percent of Total Population	1.61	1	1	
Current Boat Registrants - Percent of Total Population	0.56	1		1
WW/CW Linear Miles Stocked	0	0	0	
WW/CW Trout Stocked Lakes	0	0		0
Number Accesses/10 Miles of Stream Order \geq 5	2.997	4	4	4
Total Score		46	38	33
Bonus- Funding Available		0	0	0
Final Score		46	38	33

MAP 52. Pennsylvania Fishing and Boating Access Strategy Kiskiminetas Watershed



- | | | | |
|--|-----------------------------------|--|--------------------------|
| | Habitat Projects - Lakes | | 2009 Trout Stocked Water |
| | Habitat Projects - Flowing Waters | | Water Trails |
| | Boating Access Grant Location | | Improvement Locations |
| | Existing Accesses | | Borough |
| | 2009 WW/CW Stocked Lakes | | City |
| | 2009 Trout Stocked Lakes | | State Parks |
| | Fish Passage Projects | | State Forest |
| | 2009 WW/CW Stocked Water | | State Gamelands |



Watershed: Kiskiminetas

PFBC Region: Southwest

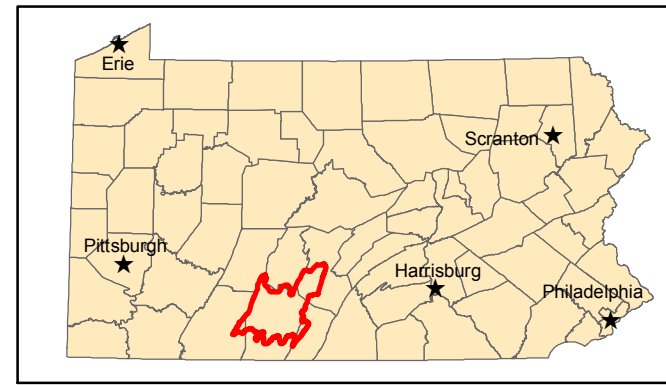
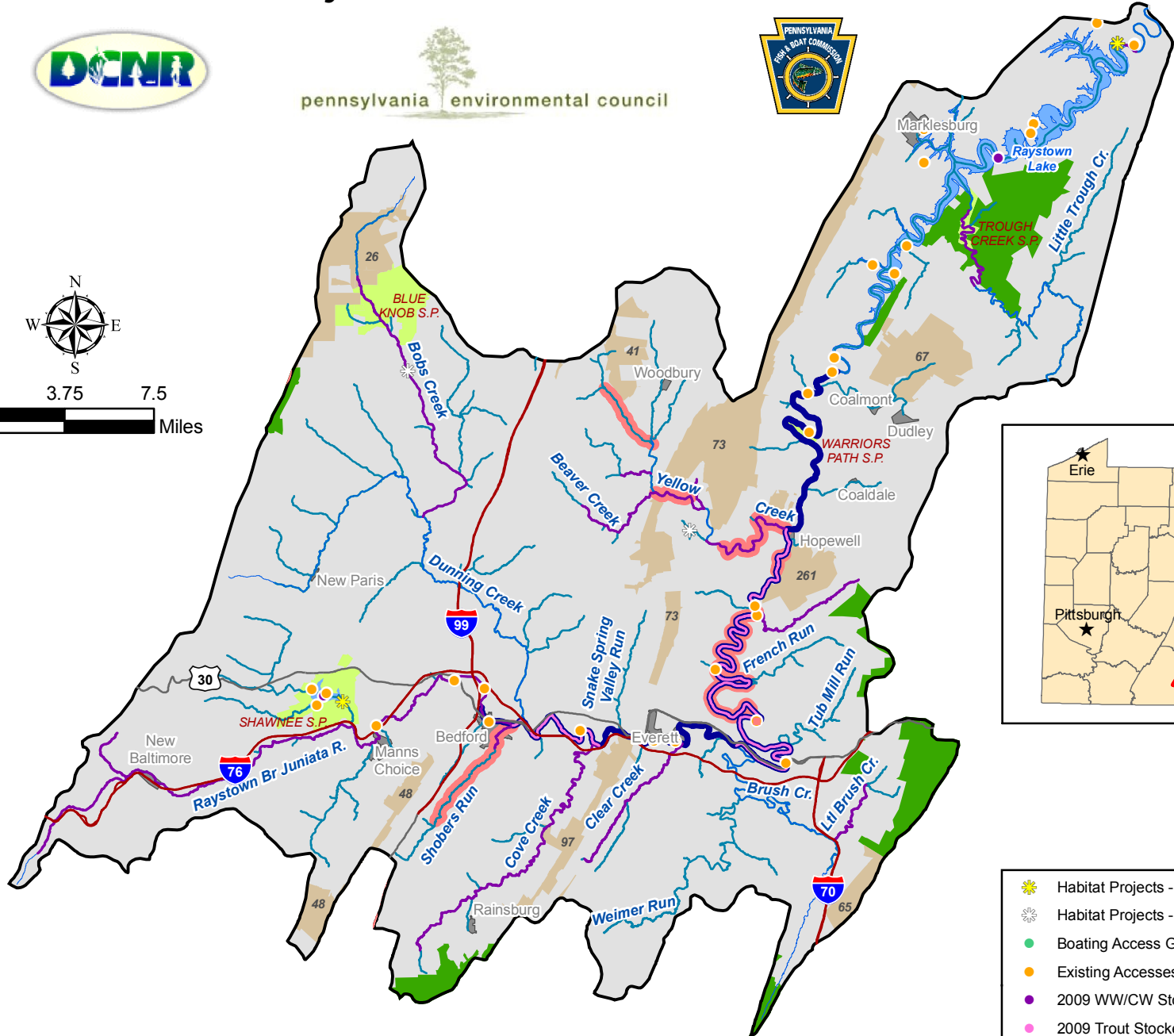
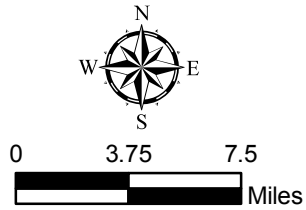
Priority: 31

General Description: Located in Westmoreland, Armstrong, and Indiana counties, this 326,075 acre watershed is located within DCNR’s Laurel Highlands Conservation Landscape Initiative. *The Kiski-Conemaugh River Basin Conservation Plan* covers the entire watershed. The Kiski-Conemaugh Water Trail flows for 28 miles through the watershed. Some tributaries to the Loyalhanna Creek are designated natural trout reproduction. The Right Fork, South Fork and Left Fork of Mill Creek are designated wilderness trout streams. The Commission stocks Blacklegs Creek, Loyalhanna Creek, Mill Creek, Fourmile Run and Hannas Run. A 2008 Western Pennsylvania Conservancy Canoe Access Development grant will improve the access site in Avonmore.

Stakeholder Input: Stakeholders indicated that Kiskiminetas River portion of the Kiski-Conemaugh Water Trail could use two to three more access location. Currently there are 5 access points along the Water Trail. The Frogtown Access was recommended for development. Stakeholders felt the owner of the Beaver Run Reservoir should be contacted regarding opening the reservoir to public fishing.

CRITERIA	Evaluation Result	SCORE	Fishing Access	Boating Access
Linear Miles Stocked	41.42	2	2	
Number Stocked Lakes	5	4	4	4
Number Boating Facility Grant	1	1		1
Number Fish Passage/Habitat Projects	11	4	4	
Water Trail/River Conservation Plan (RCP)	Both	3	3	3
Number Access Improvements Identified by Stakeholders	4	1	1	1
Total Population	98,311	1	1	1
Population Change	-0.67	0	0	0
Species Special Concern Density Per Square Mile	0.14	4	4	4
Percent Public Land	4.566	2	2	2
Number Accesses/10 Miles of Stream Order \geq 3	0.491	3	3	3
Current Number Fish Licenses	11,102	3	3	3
Current Number Boat Registrants	3,579	3		
Current Fish Licensees - Percent of Total Population	11.29	5	5	5
Current Boat Registrants - Percent of Total Population	3.64	3		
WW/CW Linear Miles Stocked	0	0	0	
WW/CW Trout Stocked Lakes	6	4	4	4
Number Accesses/10 Miles of Stream Order \geq 5	1.572	3		3
Total Score		46	36	34
Bonus- Funding Available		0	0	0
Final Score		46	36	34

MAP 53. Pennsylvania Fishing and Boating Access Strategy Raystown Watershed



- | | |
|-----------------------------------|--------------------------|
| Habitat Projects - Lakes | 2009 Trout Stocked Water |
| Habitat Projects - Flowing Waters | Water Trails |
| Boating Access Grant Location | Improvement Locations |
| Existing Accesses | Borough |
| 2009 WW/CW Stocked Lakes | City |
| 2009 Trout Stocked Lakes | State Parks |
| Fish Passage Projects | State Gamelands |
| 2009 WW/CW Stocked Water | State Forest |

Watershed: Raystown

PFBC Region: Southcentral

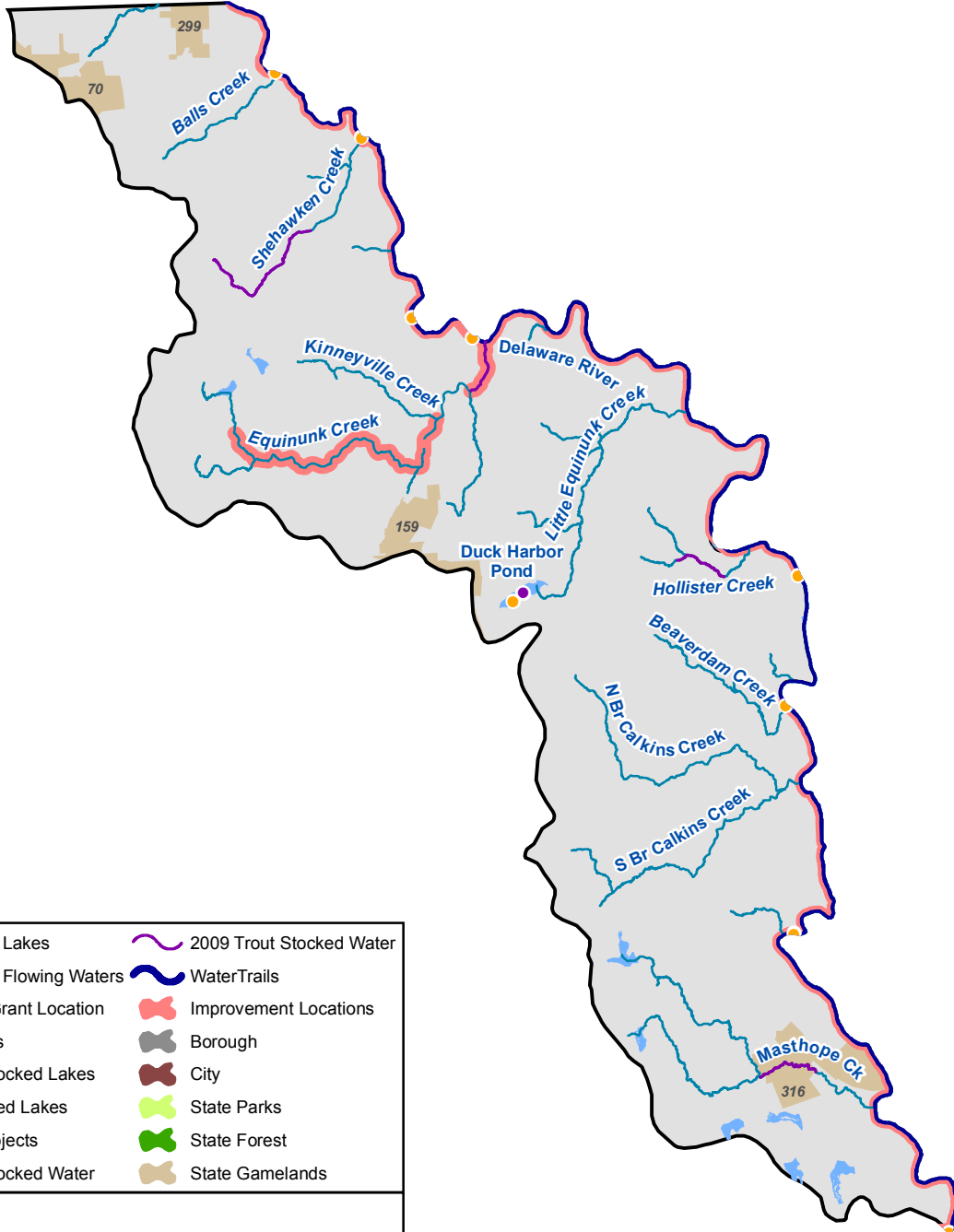
Priority: 32

General Description: Located in primarily in Bedford County, this 603,629 acre watershed includes Raystown Lake and the Raystown Branch of the Juniata River. The Commission stocks Cove Creek, Bobs Creek, Yellow Creek, Clear Creek, Little Brush Creek, Raystown Branch of the Juniata River, Raystown Lake and Shawnee Lake. Stretches of Bobs Creek, Sherman Valley Run, Cove Creek, Great Trough Creek, and Yellow Creek and its tributaries are designated natural trout reproduction. Portions of three state forests, Rothrock, Gallizen, and Buchanan, are located in the watershed. The watershed is included in the *Upper Juniata Watershed Rivers Conservation Plan*. The Juniata River Water Trail continues on the Raystown Branch. The area west of Rt. 99 falls within DCNR’s Laurel Highlands Conservation Landscape Initiative.

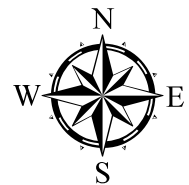
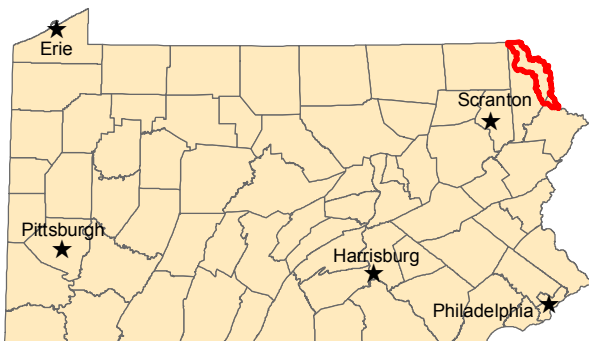
Stakeholder Input: Potter Creek has limited parking for anglers. Additional access is needed upstream of Riddlesburg on the Raystown Branch. A parking area could be created at an open field near Hopewell for the Raystown Branch. Shobers Run needs additional access from Bedford Middle School upstream to Bedford Springs Resort. A Trout Unlimited project is underway on Yellow Creek.

CRITERIA	Evaluation Result	SCORE	Fishing Access	Boating Access
Linear Miles Stocked	108.64	4	4	
Number Stocked Lakes	0	0	0	0
Number Boating Facility Grant	0	0		0
Number Fish Passage/Habitat Projects	5	2	2	
Water Trail/River Conservation Plan (RCP)	Both	3	3	3
Number Access Improvements Identified by Stakeholders	9	3	3	3
Total Population	49,645	1	1	1
Population Change	7.13	2	2	2
Species Special Concern Density Per Square Mile	0.02	1	1	1
Percent Public Land	12.610	4	4	4
Number Accesses/10 Miles of Stream Order \geq 3	0.556	4	4	4
Current Number Fish Licenses	5,765	2	2	
Current Number Boat Registrants	2,291	3		3
Current Fish Licensees - Percent of Total Population	11.61	5	5	
Current Boat Registrants - Percent of Total Population	4.61	4		4
WW/CW Linear Miles Stocked	32.95	3	3	
WW/CW Trout Stocked Lakes	2	1	1	1
Number Accesses/10 Miles of Stream Order \geq 5	1.800	3		3
Total Score		45	35	29
Bonus- Funding Available		0	0	0
Final Score		45	35	29

MAP 54. Pennsylvania Fishing and Boating Access Strategy Upper Delaware Watershed



- | | |
|-----------------------------------|--------------------------|
| Habitat Projects - Lakes | 2009 Trout Stocked Water |
| Habitat Projects - Flowing Waters | Water Trails |
| Boating Access Grant Location | Improvement Locations |
| Existing Accesses | Borough |
| 2009 WW/CW Stocked Lakes | City |
| 2009 Trout Stocked Lakes | State Parks |
| Fish Passage Projects | State Forest |
| 2009 WW/CW Stocked Water | State Gamelands |



Watershed: Upper Delaware

PFBC Region: Northeast

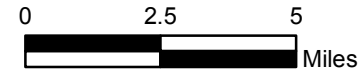
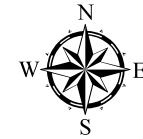
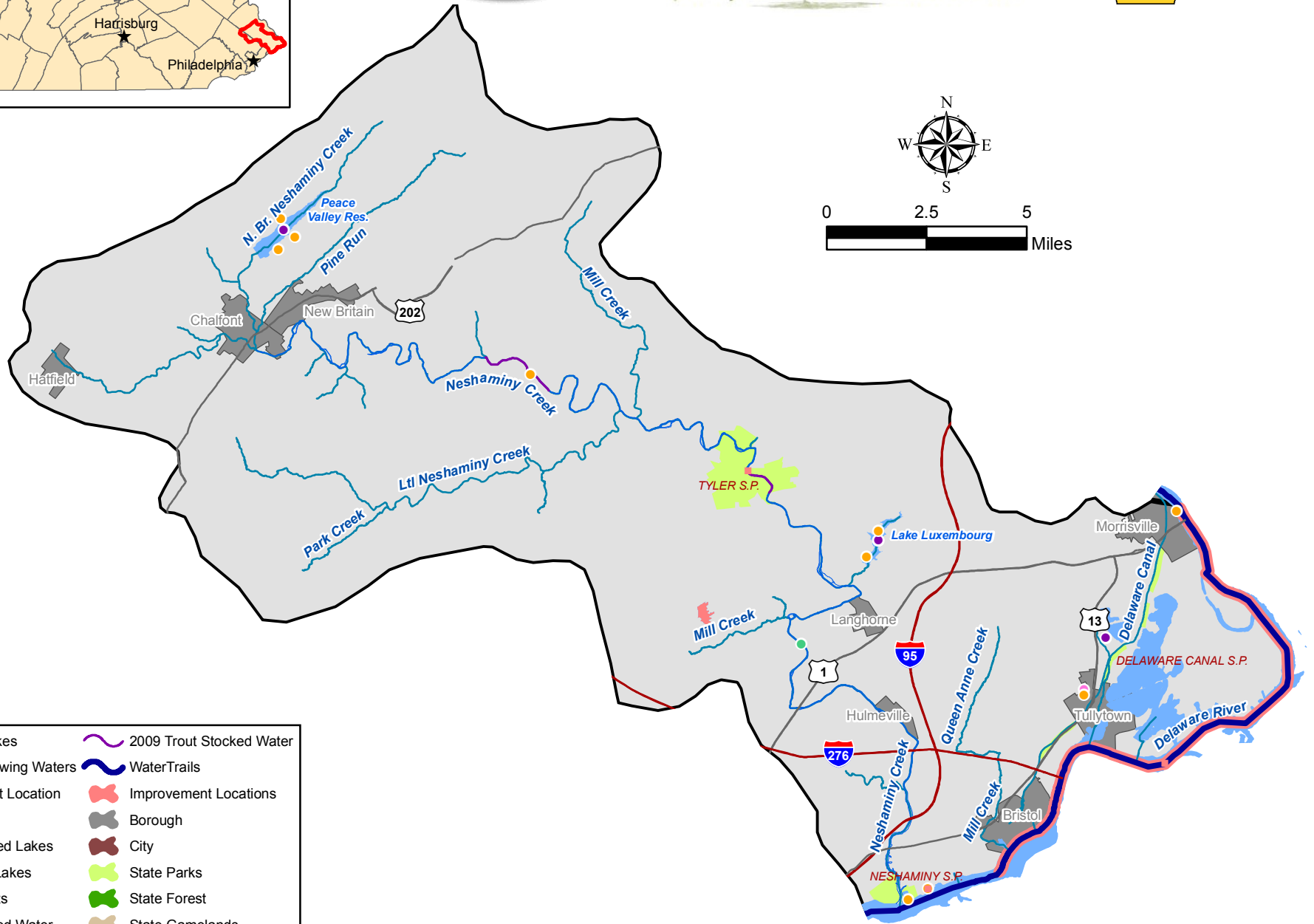
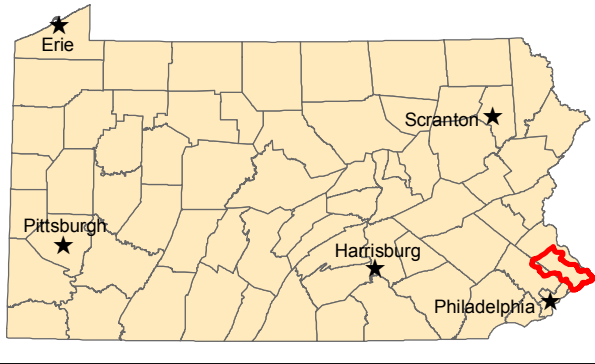
Priority: 33

General Description: Located primarily in Wayne County, this 188,369 acre watershed includes over forty miles of the Delaware River. A water trail exists for the Delaware River. Most of this section of the Delaware is designated a national scenic river. The entire watershed is located in DCNR’s Pocono Forests and Waters Conservation Landscape Initiative. The high number of accesses per ten miles of stream order five or greater is a result of the number of access locations on the Delaware River. The watershed ranks fifth in the State for percent of population change with a 35% increase in population expected between 2000 and 2020. The Commission stocks portions of five creeks and Duck Harbor Pond. However, the stocking area within the creeks represents only about ten miles of stocked waterway. The majority of the public land is owned by the Game Commission. Some tributaries of the Shehawken Creek are designated trout natural reproduction.

Stakeholder Input: Although there are eight existing access locations on the Delaware River, stakeholders suggested additional access is considered between these locations: Equinock and Callicoon, Shehawken and Buckingham, and Damascus and Narrowsburg. The Equinock Creek was identified for access improvement along most of the waterway.

CRITERIA	Evaluation Result	SCORE	Fishing Access	Boating Access
Linear Miles Stocked	10.36	1	1	
Number of Stocked Lakes	1	1	1	1
Number of Boating Facility Grant	0	0		0
Number of Fish Passage/Habitat Projects	0	0	0	
Water Trail /River Conservation Plan (RCP)	Water Trail	2	2	2
Number of Access Improvements Identified by Stakeholders	17	4	4	4
Total Population	9,272	1	1	1
Population Change	35.19	5	5	5
Species Special Concern Density Per Square Mile	0.16	4	4	4
Percent of Public Land	3.984	2	2	2
Number of Access/10Miles of Stream Order \geq 3	0.602	4	4	4
Current Number of Fish Licenses	1,315	1	1	
Current Number of Boat Registrants	818	1		1
Current Fish Licensees - % of Total Population	14.18	6	6	
Current Boat Registrants - % of Total Population	8.82	6		6
WW/CW Linear Miles Stocked	0.00	0	0	
WW/CW Trout Stocked Lakes	1	1	1	1
Number of Accesses/10 Miles of Stream Order \geq 5	3.348	5		5
Total Score		44	32	36
Bonus- Funding Available		0	0	0
Final Score		44	32	36

MAP 55. Pennsylvania Fishing and Boating Access Strategy Crosswicks-Neshaminy Watershed



- | | |
|-----------------------------------|--------------------------|
| Habitat Projects - Lakes | 2009 Trout Stocked Water |
| Habitat Projects - Flowing Waters | WaterTrails |
| Boating Access Grant Location | Improvement Locations |
| Existing Accesses | Borough |
| 2009 WW/CW Stocked Lakes | City |
| 2009 Trout Stocked Lakes | State Parks |
| Fish Passage Projects | State Forest |
| 2009 WW/CW Stocked Water | State Gamelands |

11

Watershed: Crosswicks-Neshaminy

PFBC Region: Southeast

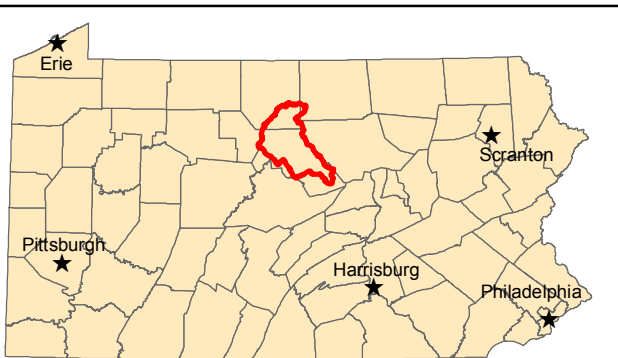
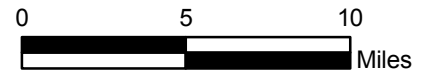
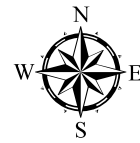
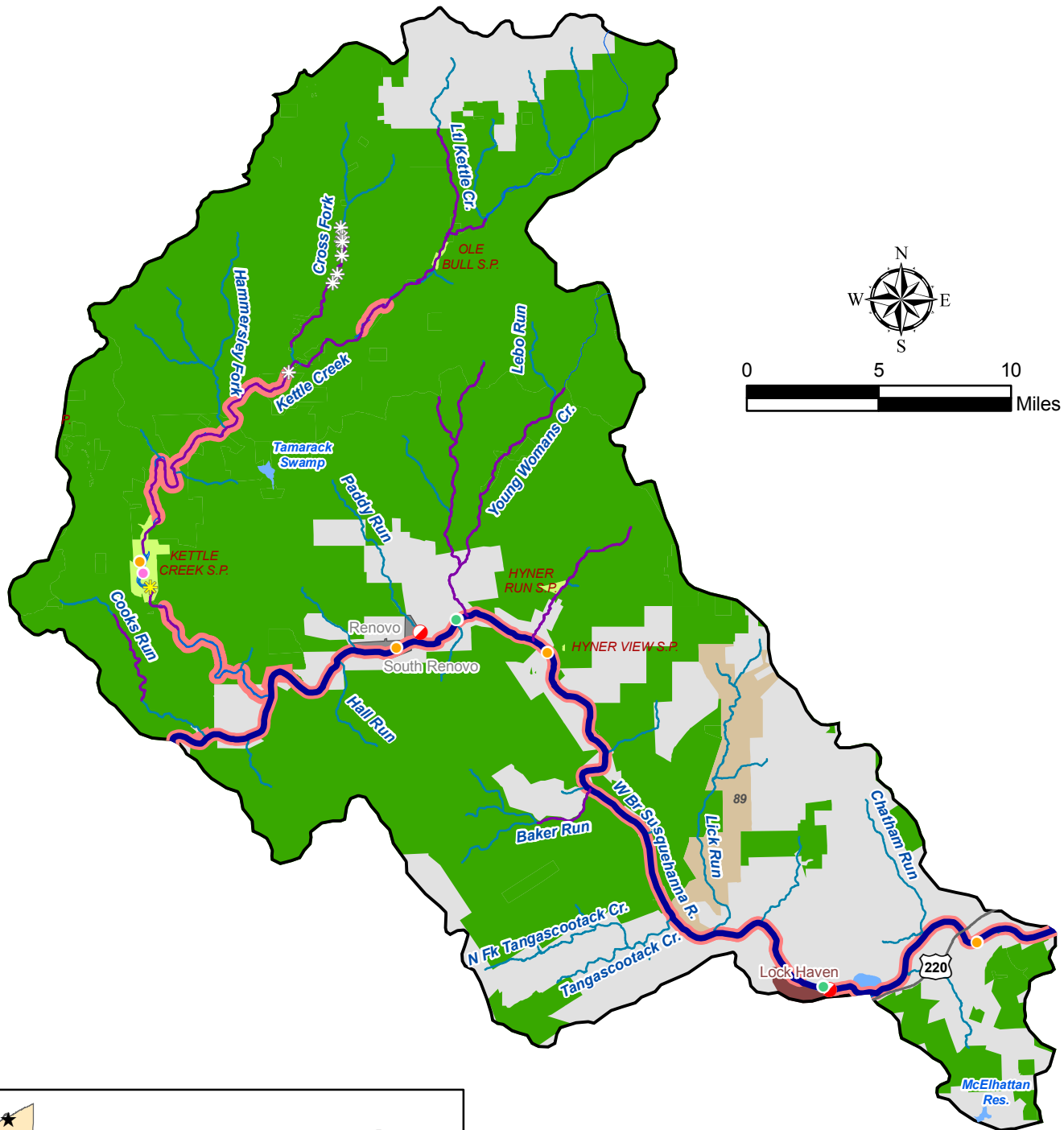
Priority: 34

General Description: Located in primarily Bucks County, the 187,742 acre watershed is densely populated in some areas due to its proximity to Philadelphia. A portion of the Delaware River Water Trail flows through the watershed. The Commission stocks Neshaminy Creek, Levittown Lake, Peace Valley Reservoir, Lake Luxembourg, and Falls Township Park Lake. Watson Creek, a tributary to Mill Creek, is designated trout natural reproduction. The majority of state-owned land is held by DCNR. The *Lower Delaware River Conservation Plan* covers a major portion of the watershed.

Stakeholder Input: Stakeholders identified a number of access points along the Delaware River that need either new access facilities or improvement to existing locations. Dock renovations were listed as way to improve the current access location on Neshaminy Creek. It was also noted that the Churchill Reservoir was now closed to fishing.

CRITERIA	Evaluation Result	SCORE	Fishing Access	Boating Access
Linear Miles Stocked	3.15	1	1	
Number Stocked Lakes	2	2	2	2
Number Boating Facility Grant	1	1		1
Number Fish Passage/Habitat Projects	0	0	0	
Water Trail/River Conservation Plan (RCP)	Both	3	3	3
Number Access Improvements Identified by Stakeholders	9	3	3	3
Total Population	484,066	4	4	4
Population Change	15.57	3	3	3
Species of Special Concern Density Per Square Mile	0.16	4	4	4
Percent Public Land	1.335	1	1	1
Number Accesses/10 miles of Stream Order \geq 3	0.713	4	4	4
Current Number Fish Licenses	19,977	4	4	4
Current Number Boat Registrants	9,864	5		5
Current Fish Licensees - Percent of Total Population	4.13	1	1	
Current Boat Registrants - Percent of Total Population	2.04	1		1
WW/CW Linear Miles Stocked	0	0	0	
WW/CW Trout Stocked Lakes	4	3	3	3
Number Accesses/10 Miles of Stream Order \geq 5	1.974	3		3
Total Score		43	33	41
Bonus- Funding Available		0	0	0
Final Score		44	33	41

MAP 56. Pennsylvania Fishing and Boating Access Strategy Middle West Branch Susquehanna Watershed



- | | | | |
|--|-----------------------------------|--|--------------------------|
| | Habitat Projects - Lakes | | 2009 Trout Stocked Water |
| | Habitat Projects - Flowing Waters | | Water Trails |
| | Boating Access Grant Location | | Improvement Locations |
| | Existing Accesses | | Borough |
| | 2009 WW/CW Stocked Lakes | | City |
| | 2009 Trout Stocked Lakes | | State Parks |
| | Fish Passage Projects | | State Gamelands |
| | 2009 WW/CW Stocked Water | | State Forest |

Watershed: Middle West Branch Susquehanna

PFBC Region: Northcentral

Priority: 35

General Description: This 498,391 acre watershed is located in Potter, Clinton, and Tioga Counties. The watershed is dominated by the Susquehanna and Sproul state forests. The West Branch of the Susquehanna River flows through the area as well as Kettle Creek, Young Woman’s and Hyner Run all of which are stocked by the Commission. The watershed is included in the *West Branch Susquehanna River Conservation Plan*. A portion of the West Branch Water Trail is located in the watershed and included in the *West Branch Susquehanna River Stewardship and Conservation Plan*. The *North Central Greenway Plan* under development will include this watershed.

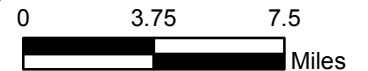
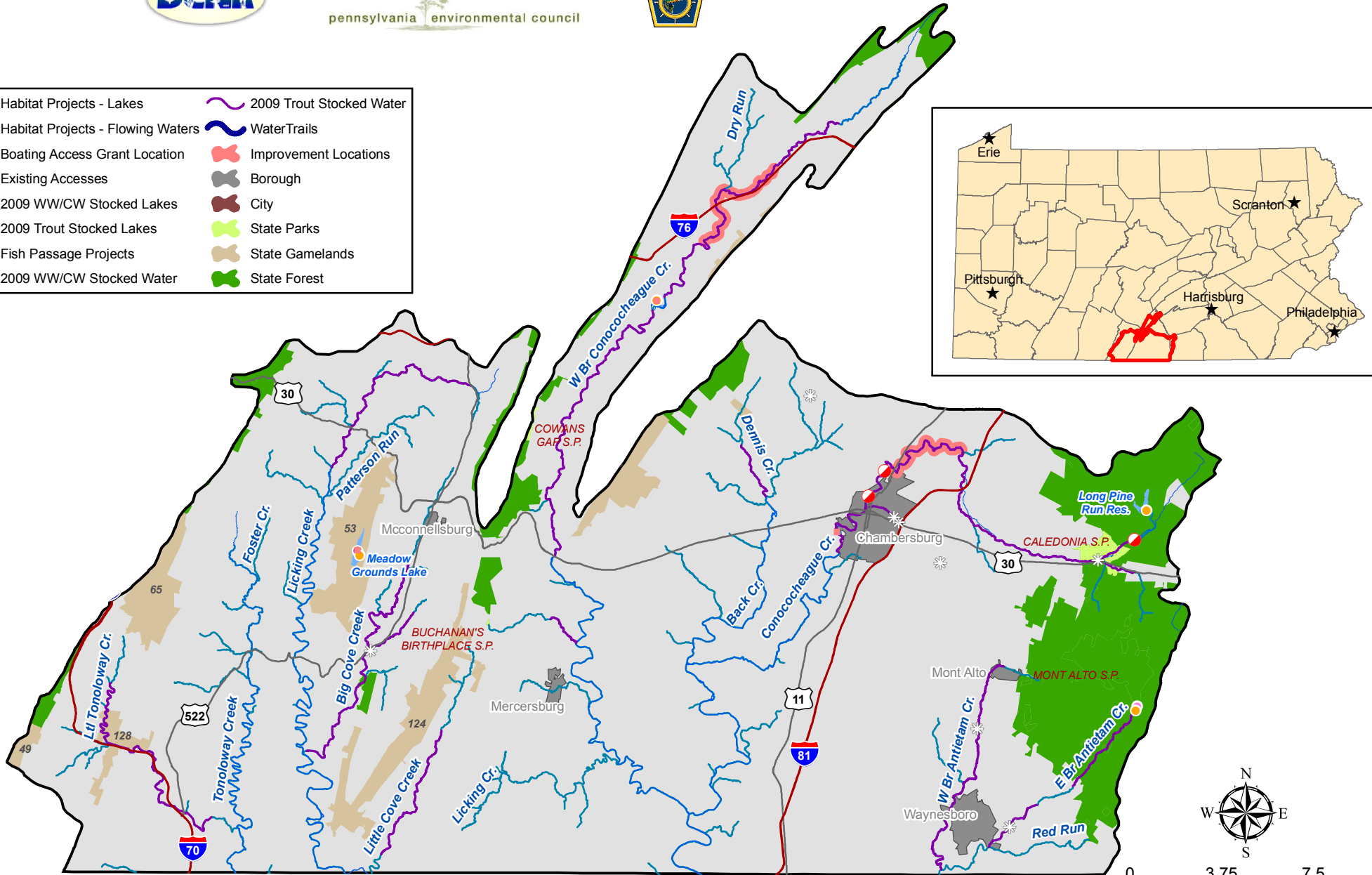
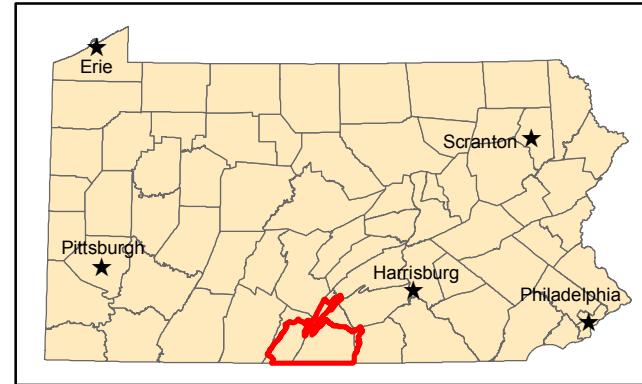
Stakeholder Input: Stakeholders noted that the improving water quality in Kettle Creek has resulted in interest in more access. Stretches of the West Branch of the Susquehanna River were also identified as needing access although no specific locations were provided. The *Stewardship and Conservation Plan* for the West Branch Susquehanna River provides recommendations for some of these stretches.

CRITERIA	Evaluation Result	SCORE	Fishing Access	Boating Access
Linear Miles Stocked	72.67	3	3	
Number Stocked Lakes	1	1	1	1
Number BFG	2	2		2
Number Fish Passage/Habitat Projects	11	4	4	
Water Trail/River Conservation Plan (RCP)	Both	3	3	3
Number Access Improvements Identified by Stakeholders	10	3	3	3
Total Population	19,924	1	1	1
Population Change	-4.55	0	0	0
SSC Density	0.06	2	2	2
Percent Public Land	75.078	6	6	6
Number Accesses/10 Miles of Stream Order ≥ 3	0.212	1	1	1
Current Number Fish Licenses	2,907	1	1	
Current Number Boat Registrants	1,093	2		2
Current Fish Licensees - Percent of Total Population	14.59	6	6	
Current Boat Registrants - Percent of Total Population	5.49	5		5
WW/CW Linear Miles Stocked	0.00	0	0	
WW/CW Trout Stocked Lakes	1	1	1	1
Number Accesses/10 Miles of Stream Order ≥ 5	0.782	1		1
Total Score		42	32	28
Bonus- Funding Available		0	0	0
Final Score		42	32	28

MAP 57. Pennsylvania Fishing and Boating Access Strategy Conococheague-Opequon Watershed



- Habitat Projects - Lakes
- Habitat Projects - Flowing Waters
- Boating Access Grant Location
- Existing Accesses
- 2009 WW/CW Stocked Lakes
- 2009 Trout Stocked Lakes
- Fish Passage Projects
- 2009 WW/CW Stocked Water
- Water Trails
- Improvement Locations
- Borough
- City
- State Parks
- State Gamelands
- State Forest



Watershed: Conococheague-Opequon

PFBC Region: Southcentral

Priority: 36

General Description: Located in Franklin, Fulton, and Huntingdon Counties, this 590,857 acre watershed ranks in the top ten in projected population growth. The Franklin County portion of the watershed east of Rt. 11 is located in DCNR’s South Mountain Conservation Landscape Initiative. The Commission stocks Conococheague Creek, West Branch Conococheague Creek, Big Cove Creek, Licking Creek, Dennis Creek, and Little Tondoway Creek. Carbaugh Run is designated as a Wilderness Trout Stream. Some tributaries of Antietam Creek, West Branch Conococheague Creek, and Conococheague Creek are designated natural trout reproduction.

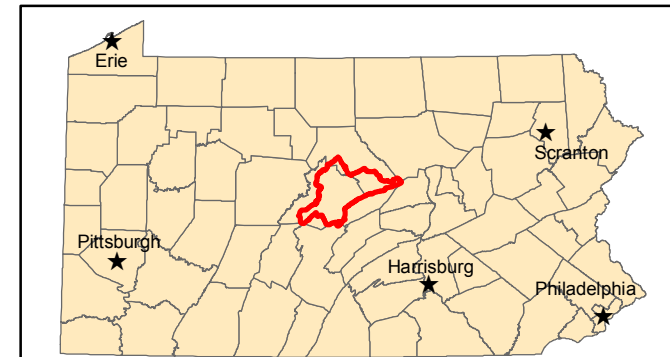
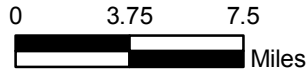
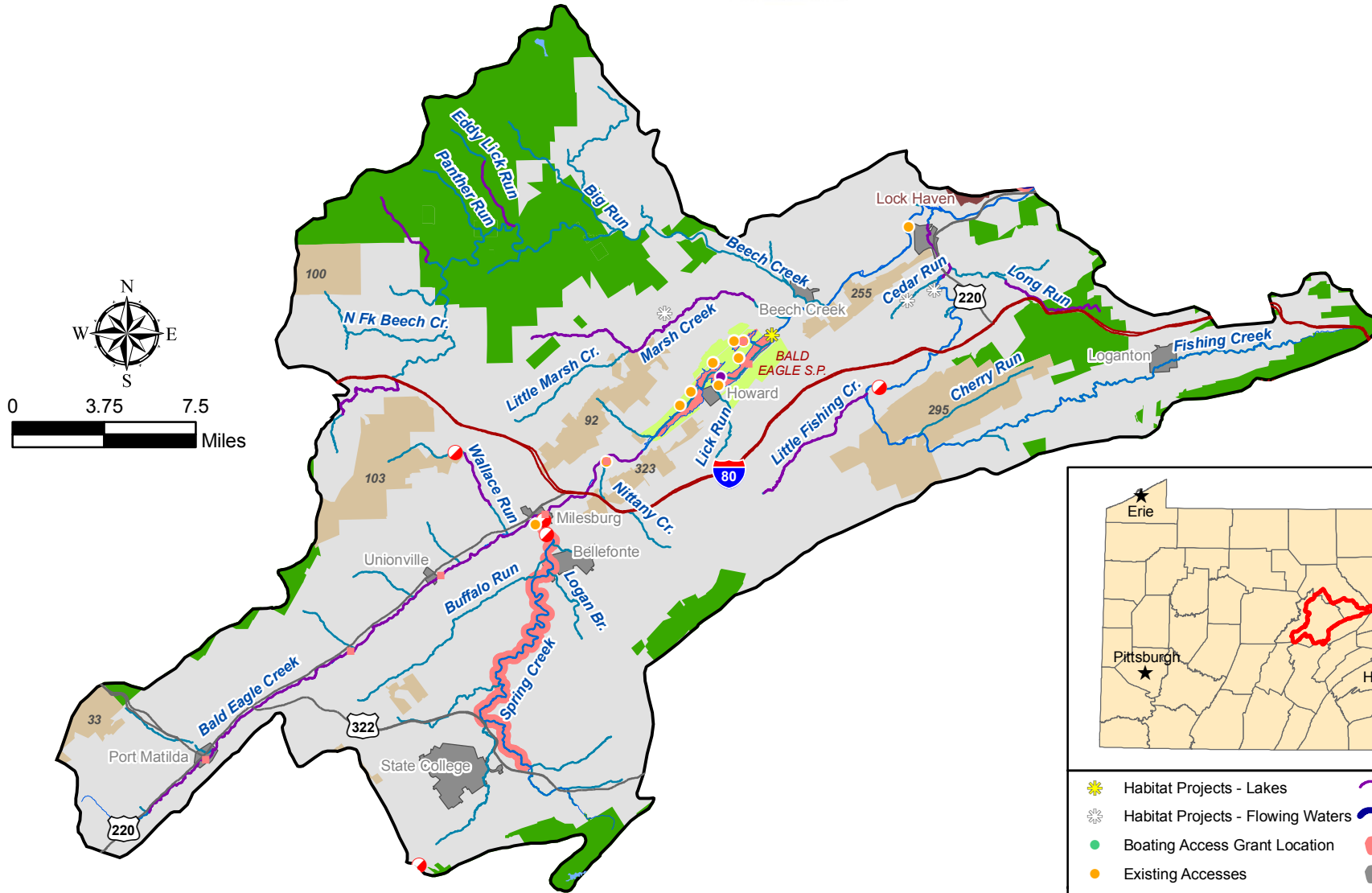
Stakeholder Input: The West Branch Conococheague Creek from Spring Run to Fort Loudon and the Conococheague Creek north of Chambersburg were identified for access improvement. The location where the Commission removed the Siloam Dam in Greene Township was provided as a possible new access site.

CRITERIA	Evaluation Result	SCORE	Fishing Access	Boating Access
Linear Miles Stocked	128.02	4	4	
Number Stocked Lakes	1	1	1	1
Number Boating Facility Grant Program	0	0		0
Number Fish Passage/Habitat Projects	11	4	4	
Water Trail/River Conservation Plan (RCP)	None	0	0	0
Number Access Improvements Identified by Stakeholders	5	2	2	2
Total Population	127,899	2	2	2
Population Change	18.51	4	4	4
Species Special Concern Density Per Square Mile	0.07	2	2	2
Percent Public Land	14.106	4	4	4
Number Access/10 Miles of Stream Order \geq 3	0.093	5	5	5
Current Number Fish Licenses	9,575	3	3	
Current Number Boat Registrants	3,767	3		3
Current Fish Licensees - Percent of Total Population	7.49	3	3	
Current Boat Registrants - Percent of Total Population	2.95	2		2
WW/CW Linear Miles Stocked	0	0	0	
WW/CW Trout Stocked Lakes	2	1	1	1
Number Accesses/10 Miles of Stream Order \geq 5	0.39	1		1
Total Score		41	35	27
Bonus- Funding Available		0	0	0
Final Score		41	35	27

MAP 58. Pennsylvania Fishing and Boating Access Strategy Bald Eagle Watershed



pennsylvania environmental council



- | | |
|-----------------------------------|--------------------------|
| Habitat Projects - Lakes | 2009 Trout Stocked Water |
| Habitat Projects - Flowing Waters | Water Trails |
| Boating Access Grant Location | Improvement Locations |
| Existing Accesses | Borough |
| 2009 WW/CW Stocked Lakes | City |
| 2009 Trout Stocked Lakes | State Parks |
| Fish Passage Projects | State Forest |
| 2009 WW/CW Stocked Water | State Gamelands |

Watershed: Bald Eagle

PFBC Region: Northcentral

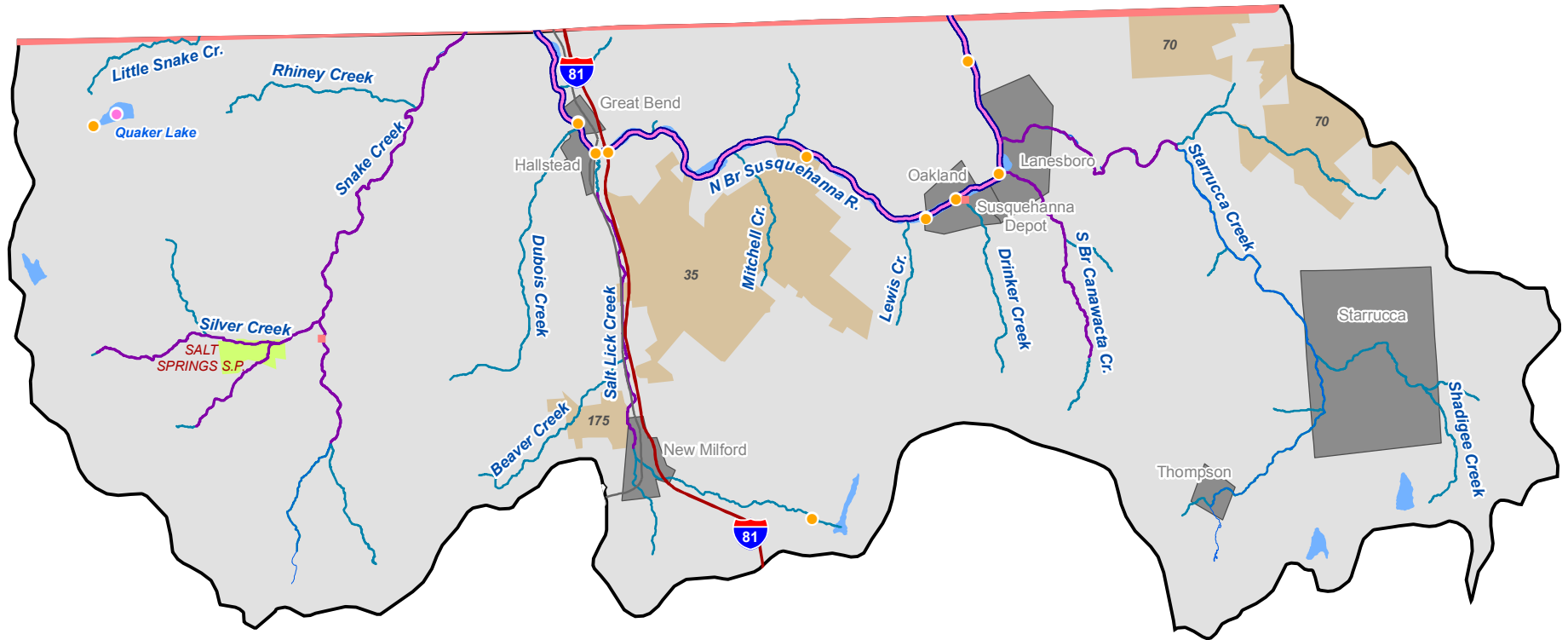
Priority: 37

General Description: Located primarily in Centre County, this 491,871 acre watershed includes Bald Eagle Creek, Spring Creek, Fishing Creek and Sayers Lake owned by DCNR. The Commission stocks nine streams in the watershed. The majority of the existing boating access sites are located on Sayers Lake. With 25 percent of the land area publicly owned, opportunities exist to improve access on DCNR and Game Commission lands should be explored. Bald Eagle’s growing population (ranks fourteenth in population change) is another reason to explore additional access.

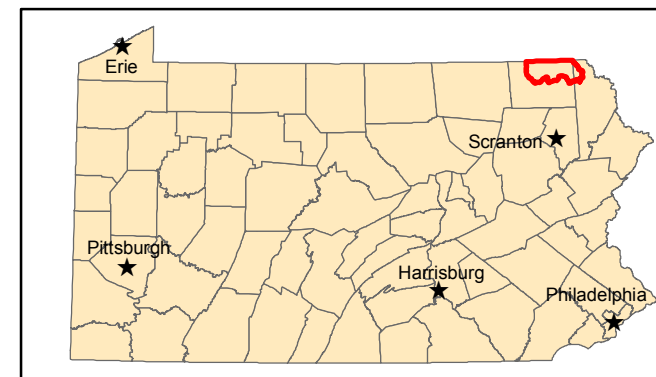
Stakeholder Input: Spring Creek was identified as needing access for almost the entire stretch in the watershed. Additional access points were recommended for Bald Eagle Creek.

CRITERIA	Evaluation Result	SCORE	Fishing Access	Boating Access
Linear Miles Stocked	68.59	3	3	
Number Stocked Lakes	0	0	0	0
Number Boating Facility Grants	0	0		0
Number Fish Passage/Habitat Projects	10	4	4	
Water Trail /River Conservation Plan (RCP)	RCP	1	1	1
Number Access Improvements Identified by Stakeholders	11	3	3	3
Total Population	116,962	2	2	2
Population Change	12.90	3	3	3
Species Special Concern Density Per Square Mile	0.04	1	1	1
Percent Public Land	25.696	5	5	5
Number Accesses/10Miles of Stream Order \geq 3	0.319	2	2	2
Current Fish Licenses - Total Population	8,774	2	2	
Current Boat Registrants -Total Population	2,920	3		3
Current Fish Licensees - Percent of Total Population	7.50	3	3	
Current Boat Licensees - Percent of Total Population	2.50	2		2
WW/CW Linear Miles Stocked	0.00	0	0	
WW/CW Trout Stocked Lakes	1.00	1	1	1
Number Accesses/10 miles of Stream Order \geq 5	2.31	4		4
Total Score		39	30	27
Bonus- Funding Available		0	0	0
Final Score		39	30	27

MAP 59. Pennsylvania Fishing and Boating Access Strategy Upper Susquehanna Watershed



- Habitat Projects - Lakes
- Habitat Projects - Flowing Waters
- Boating Access Grant Location
- Existing Accesses
- 2009 WW/CW Stocked Lakes
- 2009 Trout Stocked Lakes
- Fish Passage Projects
- 2009 WW/CW Stocked Water
- Water Trails
- Improvement Locations
- Borough
- City
- State Parks
- State Forest
- State Gamelands



Watershed: Upper Susquehanna

PFBC Region: Northeast

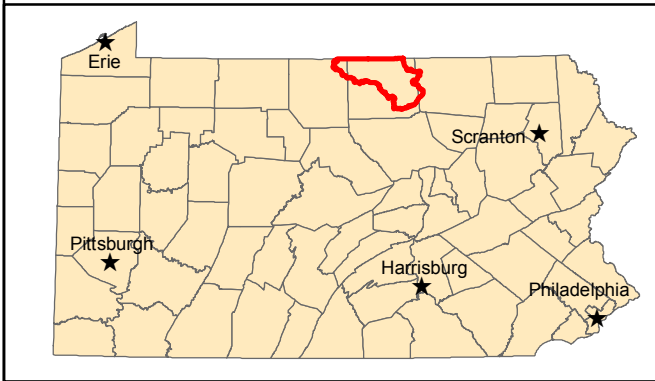
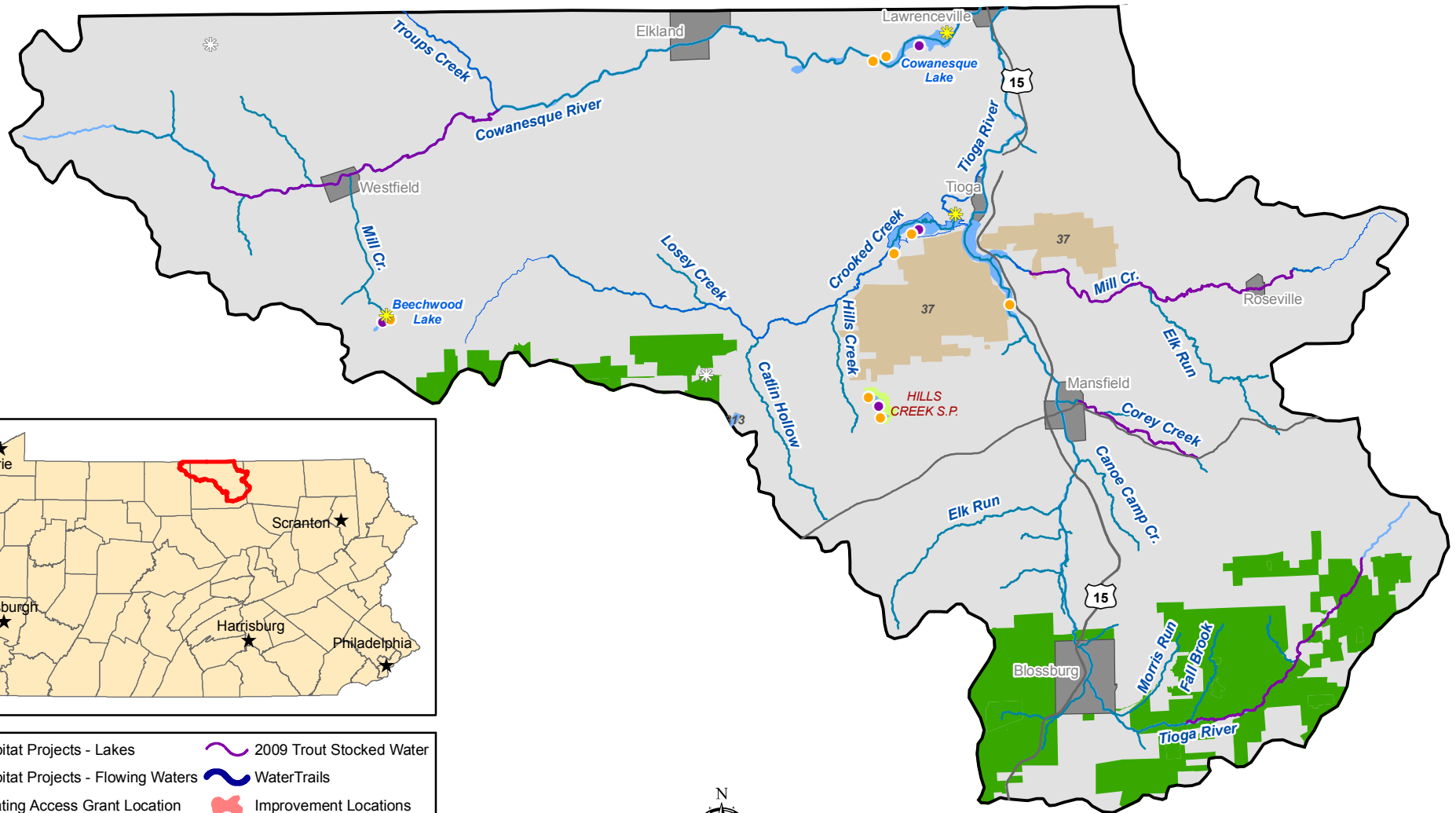
Priority: 38

General Description: Located primarily in Susquehanna County, this 176,613 acre watershed features the Susquehanna River with a continuation of the North Branch Susquehanna Water Trail. A small portion of the watershed is in Wayne County. The Commission stocks Snake Creek and the Canawacta Creek. Some tributaries of both these creeks have been documented by the Commission as having natural trout reproduction. Commonwealth owned lands are held by the Fish and Boat and Game Commissions. The Fish and Boat Commission own Quaker Lake and Stump Pond. The *North Branch Susquehanna River Conservation Plan* includes this watershed.

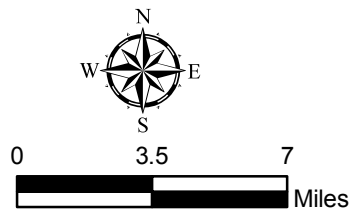
Stakeholder Input: One stakeholder felt that overall Susquehanna County needed more public access on lakes. The Susquehanna Depot area was identified as needing additional free public access to the Susquehanna River. Snake Creek in Franklin Township was noted for needing additional public access.

CRITERIA	Evaluation Result	SCORE	Fishing Access	Boating Access
Linear Miles Stocked	33.15	2	2	
Number Stocked Lakes	1	1	1	1
Number Boating Facility Grants	0	0		0
Number Fish Passage/Habitat Projects	0	0	0	
Water Trail/River Conservation Plan	Both	3	3	3
Number Access Improvements Identified by Stakeholders	3	1	1	1
Total Population	16,442	1	1	1
Population Change	2.32	1	1	1
Species Special Concern Density (Per square mile)	0.20	1	1	1
Percent Public Land	7.570	3	3	3
Number Access/10Miles of Stream Order \geq 3	0.795	5	5	5
Current Number Fish Licenses	1,568	1	1	
Current Number Boat Registrants	854	2		2
Current Fish Licensees - Percent of Total Population	9.54	4	4	
Current Boat Registrants - Percent of Total Population	5.19	5		5
WW/CW Linear Miles Stocked	16.01	2	2	
WW/CW Trout Stocked Lakes	1	1	1	1
Number Accesses/10 miles of Stream Order \geq 5	3.166	5		5
Total Score		38	26	29
Bonus- Funding Available		0	0	0
Final Score		38	26	29

MAP 60. Pennsylvania Fishing and Boating Access Strategy Tioga Watershed



- | | |
|-----------------------------------|--------------------------|
| Habitat Projects - Lakes | 2009 Trout Stocked Water |
| Habitat Projects - Flowing Waters | WaterTrails |
| Boating Access Grant Location | Improvement Locations |
| Existing Accesses | Borough |
| 2009 WW/CW Stocked Lakes | City |
| 2009 Trout Stocked Lakes | State Parks |
| Fish Passage Projects | State Forest |
| 2009 WW/CW Stocked Water | State Gamelands |



Watershed: Tioga

PFBC Region: Northcentral

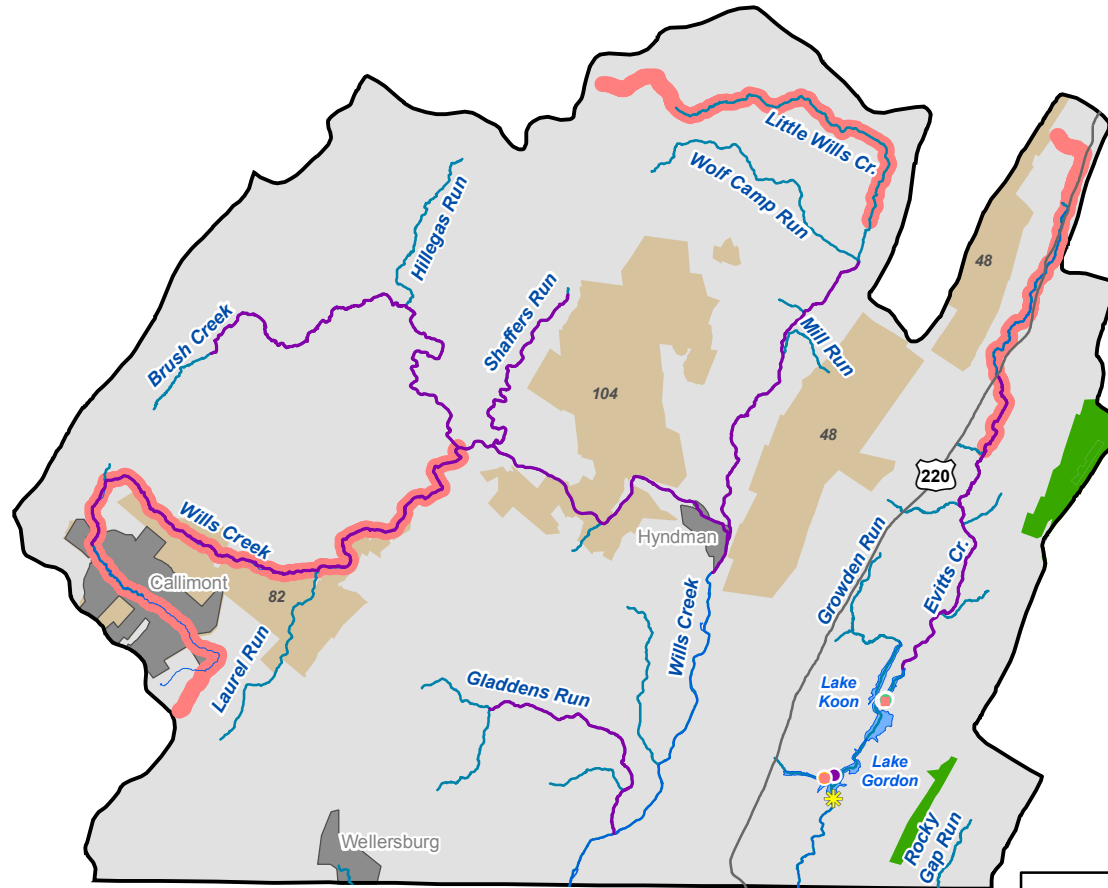
Priority: 39

General Description: Located almost entirely in Tioga County, this very rural 429,950 acre watershed hosts public lands owned by the Army Corp of Engineers and the Bureau of State Parks. Waterways found in the watershed are the Tioga River, Cowanesque River, Crooked Creek, Mill Creek and Troups Creek. Lakes include Beechwood, Hammond Hills Creek, Tioga and Cowanesque. Any access improvements projects undertaken in the portion of the watershed located in Potter County have the potential of being eligible for funding from the Sinnemahoning Creek Watershed Restoration Grant Program. The Commission stocks portions of Cowanesque River, Tioga River, Mill and Troups Creeks, and Beechwood Lake. The *North Central Greenway Plan* is currently in development.

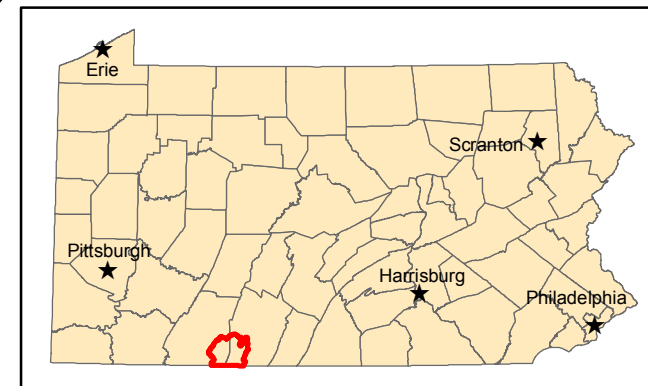
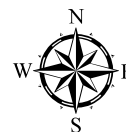
Stakeholder Input: No improvement locations were listed by stakeholders for this sub-watershed.

CRITERIA	Evaluation Result	SCORE	Fishing Access	Boating Access
Linear Miles Stocked	38.44	1	1	
Number Stocked Lakes	1	1	1	1
Number BFG	0	0		0
Number Fish Passage/Habitat Projects	5	2	2	
Water Trails/River Conservation Plan		0	0	0
Number Access Improvements Identified by Stakeholders	0	1	1	1
Total Population	29,525	1	1	1
Population Change	1.85	1	1	1
SSC Density	0.03	1	1	1
Percent Public Land	11.695	4	4	4
Number Accesses/10 Miles of Stream Order \geq 3	0.388	3	3	3
Current Number Fish Licenses	3,086	1	1	
Current Number Boat Registrants	1,176	2		2
Current Fish Licensees - Percent of Total Population	10.45	5	5	
Current Boat Registrants - Percent of Total Population	3.98	4		4
WW/CW Linear Miles Stocked	0.00	0	0	
WW/CW Trout Stocked Lakes	4	3	3	3
Number Accesses/10 Miles of Stream Order \geq 5	1.463	2		2
Total Score		32	24	23
Bonus- Funding Available	SCWR Grant	5	5	5
Final Score		37	29	28

MAP 61. Pennsylvania Fishing and Boating Access Strategy North Branch Potomac Watershed



- | | |
|-----------------------------------|--------------------------|
| Habitat Projects - Lakes | 2009 Trout Stocked Water |
| Habitat Projects - Flowing Waters | Water Trails |
| Boating Access Grant Location | Improvement Locations |
| Existing Accesses | Borough |
| 2009 WW/CW Stocked Lakes | City |
| 2009 Trout Stocked Lakes | State Parks |
| Fish Passage Projects | State Gamelands |
| 2009 WW/CW Stocked Water | State Forest |



Watershed: North Branch Potomac

PFBC Region: Southwest

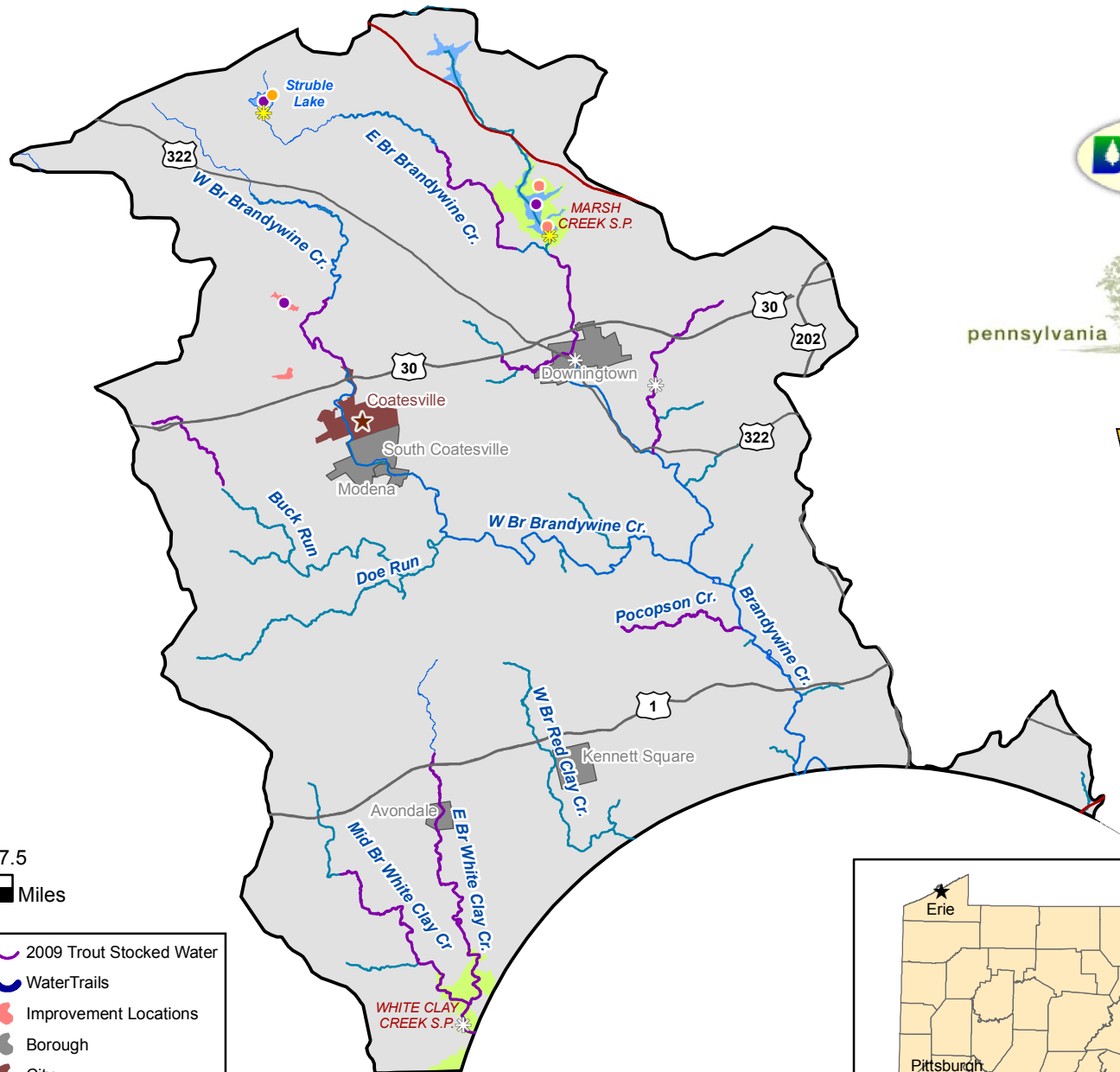
Priority: 40

General Description: This 165,548 acre watershed is located in Somerset and Bedford counties. A portion of the watershed is located in DCNR’s Laurel Highlands Conservation Landscape Initiative. The Commission stocks Wills Creek, Little Wills Creek, Evitts Creek, Shaffers Run, Gladdens Run, and Brush Creek. A portion of Buchanan State Forest is located in the watershed. Laurel Run, North Branch Jennings Run, Shoemaker Run, Shaffers Run, and Bruck Run all have stretches designated natural trout reproduction.

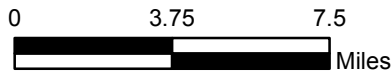
Stakeholder Input: Private lands along Little Wills Creek are currently open to the public but one stakeholder was concerned that the lands could eventually become posted. Wills Creek was noted for needing additional access outside of Game Lands #82. Evitts Creek has limited access due to posting of private land and the topography.

CRITERIA	Evaluation Result	SCORE	Fishing Access	Boating Access
Linear Miles Stocked	53.19	3	3	
Number Stocked Lakes	1	1	1	1
Number Boating Facility Grant	1	1		1
Number Fish Passage/Habitat Projects	1	1	1	
Water Trail/River Conservation Plan (RCP)	None	0	0	0
Number Access Improvements Identified by Stakeholders	5	2	2	2
Total Population	7,426	1	1	1
Population Change	0.23	1	1	1
Species Special Concern Density Per Square Mile	0.01	1	1	1
Percent Public Land	14.223	4	4	4
Number Accesses/10 Miles of Stream Order \geq 3	0.164	1	1	1
Current Number Fish Licenses	1,113	1	1	
Current Number Boat Registrants	384	1		1
Current Fish Licensees - Percent of Total Population	14.99	6	6	
Current Boat Registrants - Percent of Total Population	5.17	5		5
WW/CW Linear Miles Stocked	0	0	0	
WW/CW Trout Stocked Lakes	2	1	1	1
Number Accesses/10 miles of Stream Order \geq 5	0.997	1		1
Total Score		31	23	20
Bonus- Funding Available		0	0	0
Final Score		31	23	20

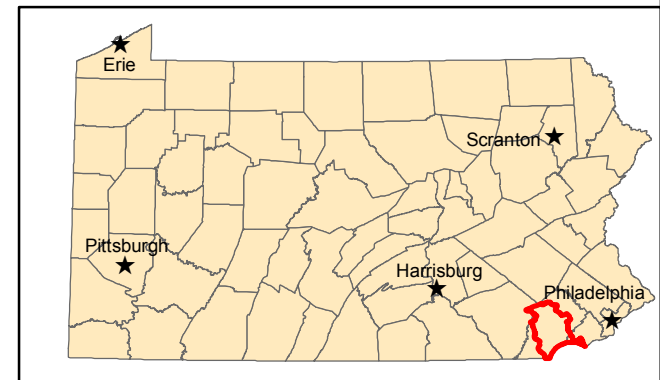
MAP 62. Pennsylvania Fishing and Boating Access Strategy Brandywine-Christina Watershed



pennsylvania environmental council



- | | |
|-----------------------------------|--------------------------|
| Habitat Projects - Lakes | 2009 Trout Stocked Water |
| Habitat Projects - Flowing Waters | Water Trails |
| Boating Access Grant Location | Improvement Locations |
| Existing Accesses | Borough |
| 2009 WW/CW Stocked Lakes | City |
| 2009 Trout Stocked Lakes | State Parks |
| Fish Passage Projects | State Forest |
| 2009 WW/CW Stocked Water | State Gamelands |



Watershed: Brandywine-Christina

PFBC Region: Southeast

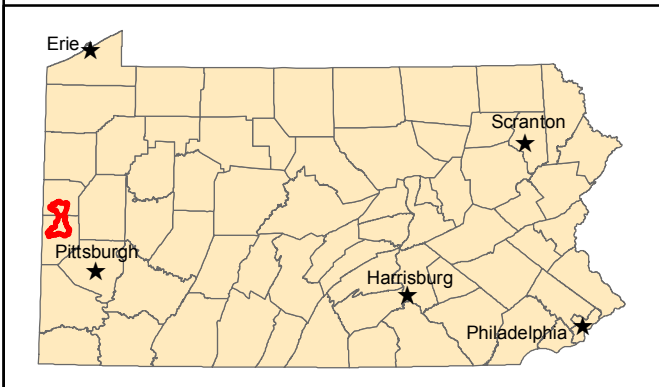
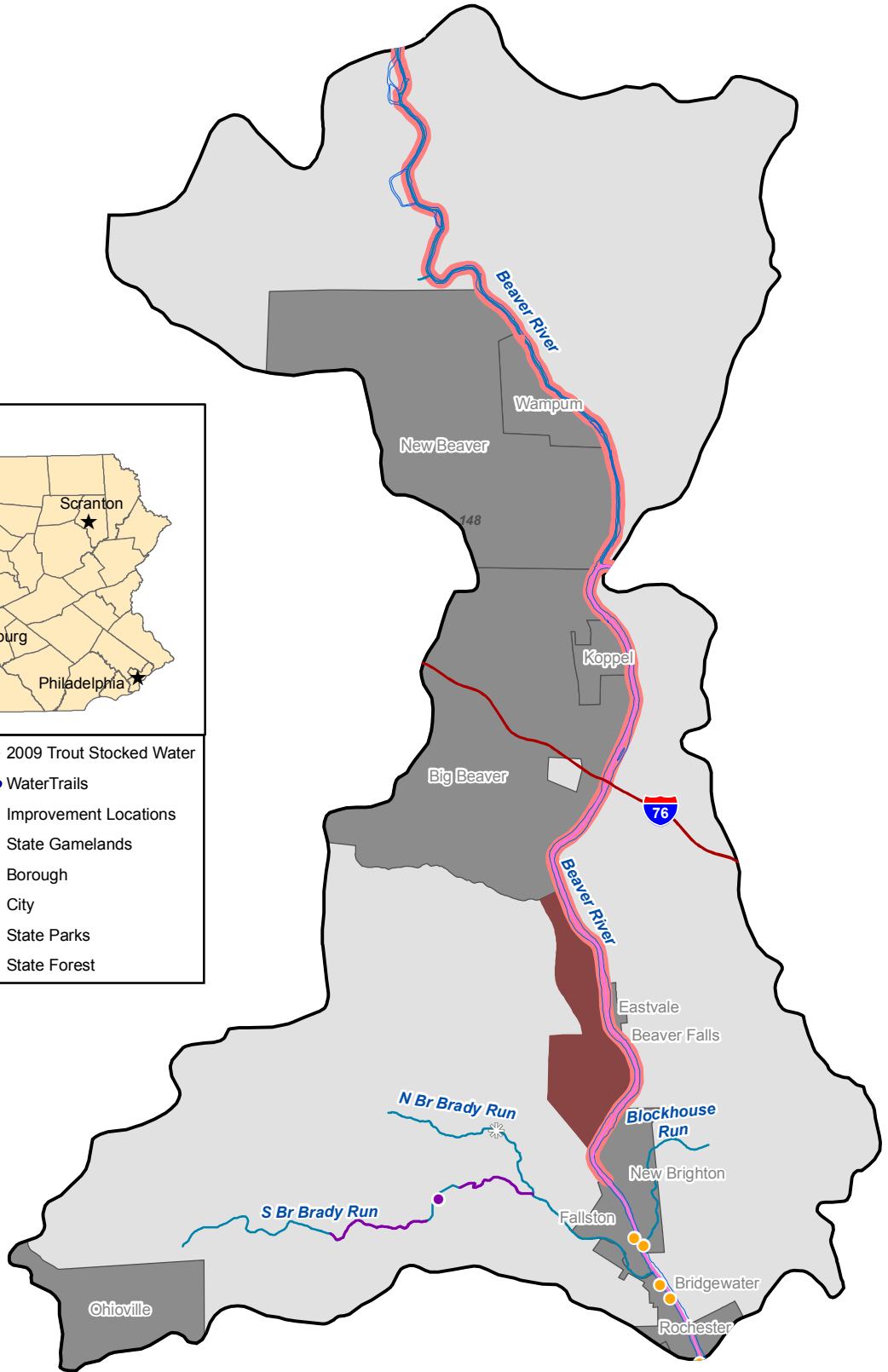
Rank: 41

General Description: Located primarily in Chester County, this 263,388 acre watershed is one of the fastest growing watersheds in the Commonwealth. The watershed includes the Brandywine Creek, East and West branches of the Brandywine Creek, White Clay Creek, Marsh Creek Lake, Chambers Lake and the Coatsville Reservoir. The Commission stocks portions of Brandywine Creek and its tributaries as well as White Clay Creek, Valley Creek, Buck Run and Pocoposon Creek. The lakes are also stocked by the Commission. Several small creeks have been identified as having natural reproduction of trout. With only 1 percent of the watershed in public ownership, expansion of public access on the streams and creeks would involve working with private landowners. The watershed is part of the *Lower Delaware River Conservation Plan*.

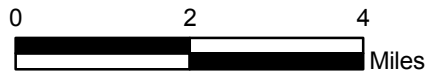
Stakeholder Input: Stakeholders believed access improvements were needed on Marsh Creek Lake (ramp and dock improvements), Chambers Lake (additional parking), and the Coatsville Reservoir.

CRITERIA	Evaluation Result	SCORE	Fishing Access	Boating Access
Linear Miles Stocked	48.35	2	2	
Number Stocked Lakes	0	0	0	0
Number Boating Facility Grant	0	0		0
Number Fish Passage/Habitat Projects	5	2	2	
Water Trail/River Conservation Plan (RCP)	RCP	1	1	1
Number Access Improvements Identified by Stakeholders	5	2	2	2
Total Population	256,170	3	3	3
Population Change	25.06	4	4	4
Species Special Concern Density Per Square Mile	0.11	3	3	3
Percent Public Land	1.133	1	1	1
Number Access/10Miles of Stream Order \geq 3	0.192	1	1	1
Current Number Fish Licenses	10,524	3	3	
Current Number Boat Registrants	4,202	3		3
Current Fish Licensees - Percent of Total Population	4.11	1	1	
Current Boat Registrants - Percent of Total Population	1.64	1		1
WW/CW Linear Miles Stocked	0	0	0	
WW/CW Trout Stocked Lakes	3	2	2	2
Number Accesses/10 miles of Stream Order \geq 5	0.945	1		1
Total Score		30	25	22
Bonus- Funding Available		0	0	0
Final Score		30	25	22

MAP 63. Pennsylvania Fishing and Boating Access Strategy Beaver Watershed



- | | |
|-----------------------------------|--------------------------|
| Habitat Projects - Lakes | 2009 Trout Stocked Water |
| Habitat Projects - Flowing Waters | Water Trails |
| Boating Access Grant Location | Improvement Locations |
| Existing Accesses | State Gamelands |
| 2009 WW/CW Stocked Lakes | Borough |
| 2009 Trout Stocked Lakes | City |
| Fish Passage Projects | State Parks |
| 2009 WW/CW Stocked Water | State Forest |



Watershed: Beaver

PFBC Region: Northwest and Southwest

Rank: 42

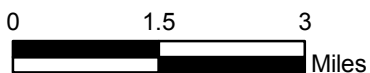
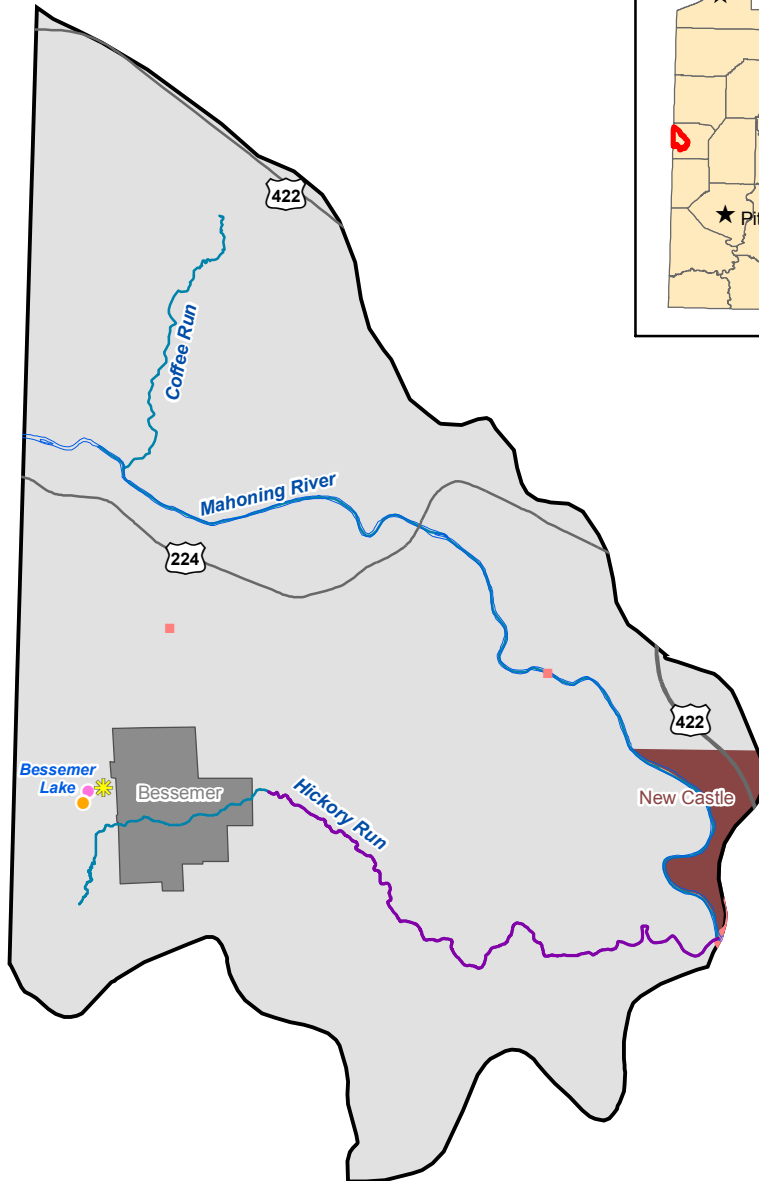
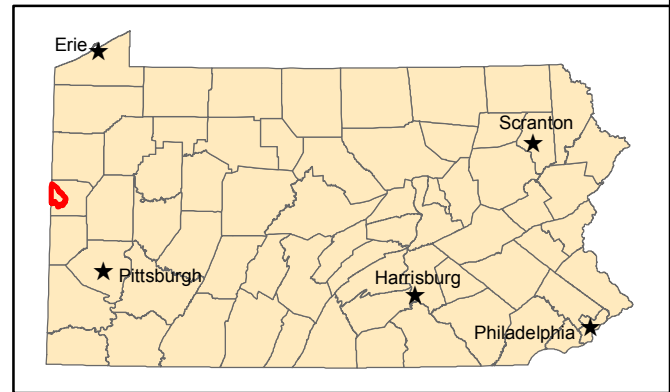
General Description: Located in Lawrence and Beaver Counties, this 70,639 acre watershed includes the Beaver River and Brady Run Lake. Access to the Beaver River is concentrated south of Jeffries Landing. The Commission stocks Brady Run Lake and the south branch of Brady Run. The watershed ranks forty-ninth in percent of state owned land indicating additional access opportunities would need to occur through some type private landowner participation or public acquisition of land.

Stakeholder Input:

Stakeholders believed the Beaver River as needing access improvements through the entire stretch north of Jeffries landing. Brady Run Lake was not identified by stakeholders for additional access improvements.

CRITERIA	Evaluation Result	SCORE	Fishing Access	Boating Access
Linear Miles Stocked	2.78	1	1	
Number Stocked Lakes	1	1	1	1
Number Boating Facility Grant	0	0		0
Number Fish Passage/Habitat Projects	1	1	1	
Water Trail/River Conservation Plan	0	0	0	0
Number Access Improvements Identified by Stakeholders	7	2	2	2
Total Population	54,738	1	1	1
Population Change	-5.64	0	0	0
Species Special Concern Density Per Square Mile	0.34	5	5	5
Percent Public Land	0.34	1	1	1
Number Access/10 Miles of Stream Order \geq 3	1.14	2	2	2
Current Number Fish Licenses	3,627	1	1	
Current Number Boat Registrants	1,502	2		2
Current Fish Licensees - Percent of Total Population	6.63	3	3	
Current Boat Registrants - Percent of Total Population	2.74	2		2
WW/CW Linear Miles Stocked	12.36	2	2	
WW/CW Trout Stocked Lakes	1	1	1	1
Number Access/10 Miles of Stream Order \geq 5	1.86	3		3
Total Score		28	21	20
Bonus-Funding Available		0	0	0
Final Score		28	21	20

MAP 64. Pennsylvania Fishing and Boating Access Strategy Mahoning Watershed



- | | |
|-----------------------------------|--------------------------|
| Habitat Projects - Lakes | 2009 Trout Stocked Water |
| Habitat Projects - Flowing Waters | Water Trails |
| Boating Access Grant Location | Improvement Locations |
| Existing Accesses | State Gamelands |
| 2009 WW/CW Stocked Lakes | Borough |
| 2009 Trout Stocked Lakes | City |
| Fish Passage Projects | State Parks |
| 2009 WW/CW Stocked Water | State Forest |

Watershed: Mahoning

PFBC Region: Northwest

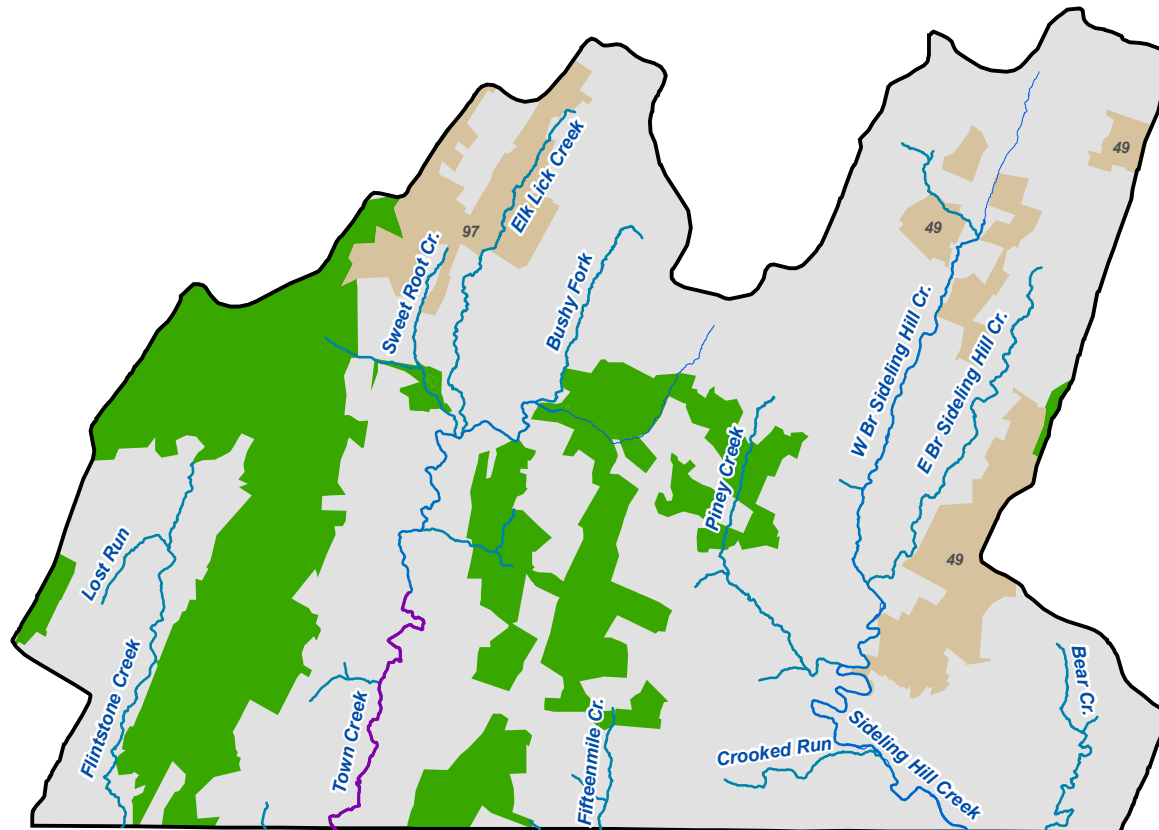
Priority: 43

General Description: This 35,055 acre watershed is located in Lawrence County. The Commission stocks Hickory Run and Bessemer Lake. The watershed has one of the highest concentrations of species of special concern density per square mile.

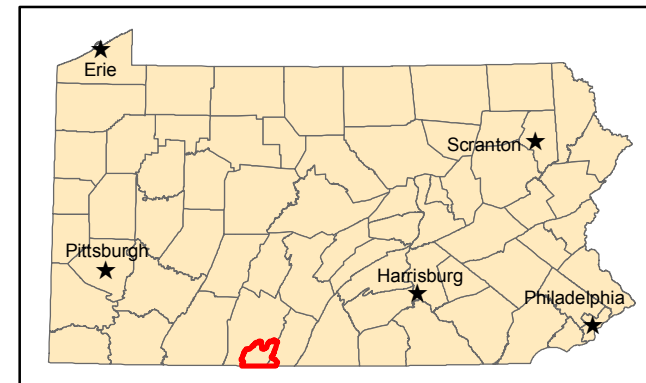
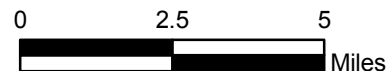
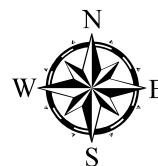
Stakeholder Input: In Mahoning Township, a boat launch was recommended along the Mahoning River. New fishing access areas were suggested for Bessemer Lake. Beaver River has limited public access from New Brighton to New Castle.

CRITERIA	Evaluation Result	SCORE	Fishing Access	Boating Access
Linear Miles Stocked	6.90	1	1	
Number Stocked Lakes	1	1	1	1
Number Boating Facility Grant	0	0		0
Number Fish Passage/Habitat Projects	1	1	1	
Water Trail /River Conservation Plan (RCP)	None	0	0	0
Number Access Improvements Identified by Stakeholders	3	1	1	1
Total Population	11,359	1	1	1
Population Change	-15.02	0	0	0
Species Special Concern Density Per Square Mile	0.42	6	6	6
Percent Public Land	0.000	0	0	0
Number Accesses/10 Miles of Stream Order \geq 3	0.413	3	3	3
Current Number Fish Licenses	1,013	1	1	
Current Number Boat Registrants	381	1		1
Current Fish Licensees - Percent of Total Population	8.92	4	4	
Current Boat Registrants - Percent of Total Population	3.35	3		3
WW/CW Linear Miles Stocked	0	0	0	
WW/CW Trout Stocked Lakes	1	1	1	1
Number Accesses/10 Miles of Stream Order \geq 5	0	0		0
Total Score		24	20	17
Bonus- Funding Available		0	0	0
Final Score		24	20	17

MAP 65. Pennsylvania Fishing and Boating Access Strategy Cacapon-Town Watershed



- | | |
|-----------------------------------|--------------------------|
| Habitat Projects - Lakes | 2009 Trout Stocked Water |
| Habitat Projects - Flowing Waters | Water Trails |
| Boating Access Grant Location | Improvement Locations |
| Existing Accesses | Borough |
| 2009 WW/CW Stocked Lakes | City |
| 2009 Trout Stocked Lakes | State Parks |
| Fish Passage Projects | State Gamelands |
| 2009 WW/CW Stocked Water | State Forest |



Watershed: Capacon-Town

PFBC Region: Southcentral

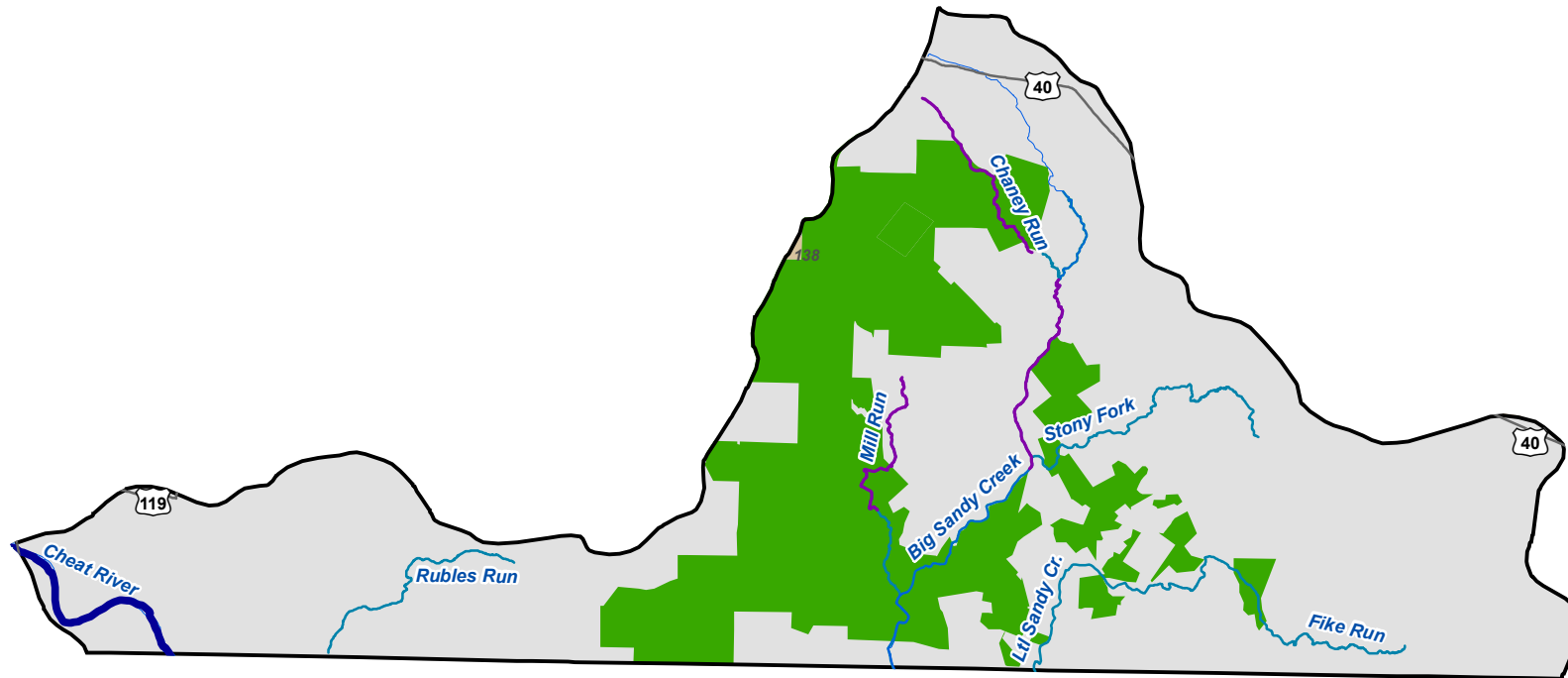
Rank: 44

General Description: Located primarily in Bedford County, this 116,949 acre watershed features Siding Hill, West Branch, and Town creeks. The Commission only stocks Town Creek. Sweet Root Creek has been identified as having natural trout reproduction. Buchanan State Forest makes up approximately 23 percent of the watershed’s acreage. The watershed is very rural but is expected to see additional population growth over the next ten years.

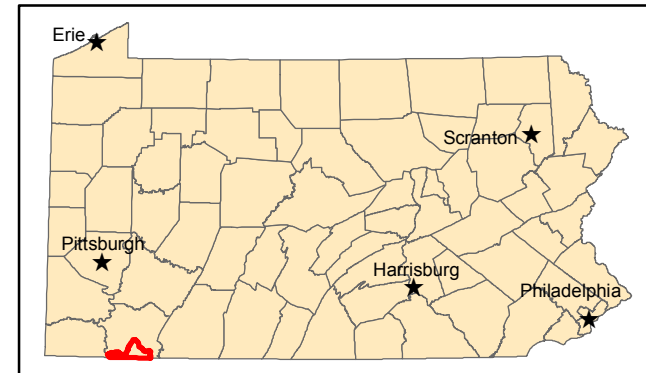
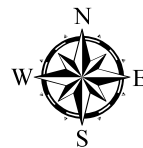
Stakeholder Input: No stakeholder comments were received for this watershed.

CRITERIA	Evaluation Result	SCORE	Fishing Access	Boating Access
Linear Miles Stocked	5.90	1	1	
Number Stocked Lakes	0	0	0	0
Number Boating Facility Grant	0	0		0
Number Fish Passage/Habitat Projects	0	0	0	
Water Trail/River Conservation Plan (RCP)	RCP	1	1	1
Number Access Improvements Identified by Stakeholders	0	0	0	0
Total Population	2,656	1	1	1
Population Change	12.29	3	3	3
Species Special Concern Density Per Square Mile	0.02	1	1	1
Percent Public Land	28.465	5	5	5
Number Access/10Miles of Stream Order > 3	0.000	0	0	0
Current Number Fish Licenses	274	1	1	
Current Number Boat Registrants	99	1		1
Current Fish Licensees - Percent of Total Population	10.32	5	5	
Current Boat Registrants - Percent of Total Population	3.73	3		3
WW/CW Linear Miles Stocked	0	0	0	
WW/CW Trout Stocked Lakes	0	0	0	0
Number Accesses/10 miles of Stream Order \geq 5	0	0		0
Total Score		22	18	15
Bonus- Funding Available		0	0	0
Final Score		22	18	15

MAP 66. Pennsylvania Fishing and Boating Access Strategy Cheat Watershed



- | | |
|-----------------------------------|--------------------------|
| Habitat Projects - Lakes | 2009 Trout Stocked Water |
| Habitat Projects - Flowing Waters | Water Trails |
| Boating Access Grant Location | Improvement Locations |
| Existing Accesses | Borough |
| 2009 WW/CW Stocked Lakes | City |
| 2009 Trout Stocked Lakes | State Parks |
| Fish Passage Projects | State Gamelands |
| 2009 WW/CW Stocked Water | State Forest |



Watershed: Cheat

PFBC Region: Southwest

Priority: 45

General Description: This 61,397 acre watershed is one of the smallest in land area to be evaluated. Located in Fayette County, waterways located in the watershed include Big Sandy Creek, the Monongahela River and the Cheat River. A small section of the Upper Monongahela Water Trail is located in the watershed. Stocked streams include Chaney Run, Mill Run and Big Sandy Creek.

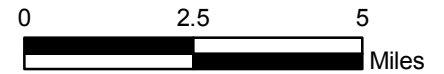
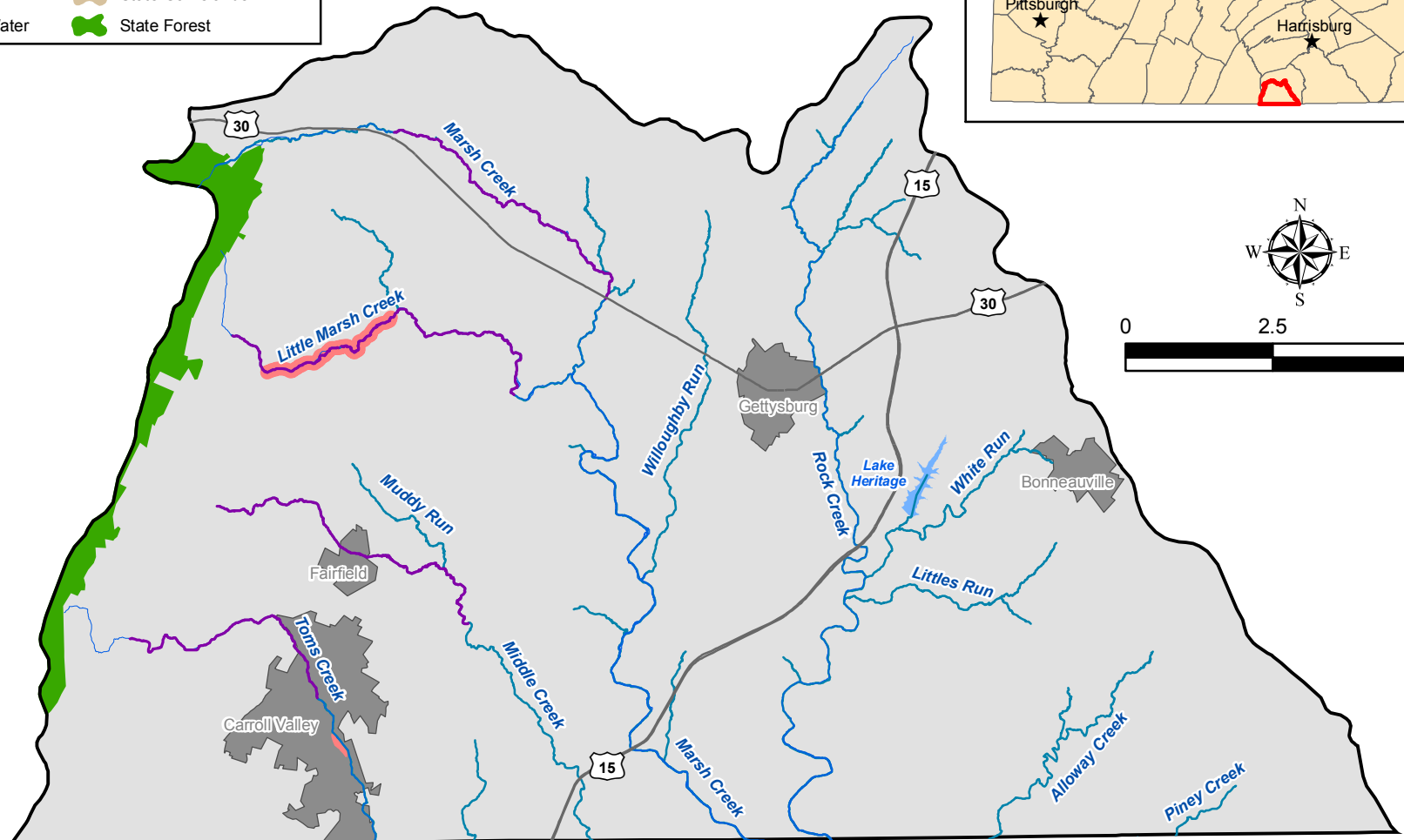
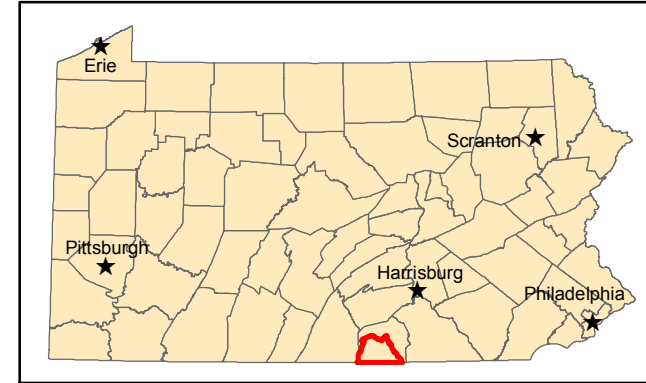
Stakeholder Input: No stakeholder comments were received for this watershed.

CRITERIA	Evaluation Result	SCORE	Fishing Access	Boating Access
Linear Miles Trout Stocked	9.36	1	1	
Number Stocked Lakes	0	0	0	0
Number Boating Facility Grant	0	0		0
Number Fish Passage/Habitat Projects	0	0	0	
Water Trail/River Conservation Plan (RCP)	Water Trail	1	1	1
Number Access Improvements Identified by Stakeholders	0	0	0	0
Total Population	5,232	1	1	1
Population Change	9.07	2	2	2
Species Special Concern Density Per Square Mile	0.10	3	3	3
Percent Public Land	25.61	5	5	5
Number Access/10Miles of Stream Order \geq 3	0.000	0	0	
Current Number Fish Licenses	431	1	1	
Current Number Boat Registrants	152	1		1
Current Fish Licensees - Percent of Total Population	8.24	4	4	
Current Boat Registrants - Percent of Total Population	2.91	2		2
WW/CW Linear Miles Stocked	0	0	0	
WW/CW Trout Stocked Lakes	0	0	0	0
Number Accesses/10 Miles of Stream Order \geq 5	0	0		0
Total Score		21	18	15
Bonus- Funding Available	0	0	0	0
Final Score		21	18	15

MAP 67. Pennsylvania Fishing and Boating Access Strategy Monocacy Watershed



- | | |
|-----------------------------------|--------------------------|
| Habitat Projects - Lakes | 2009 Trout Stocked Water |
| Habitat Projects - Flowing Waters | WaterTrails |
| Boating Access Grant Location | Improvement Locations |
| Existing Accesses | Borough |
| 2009 WW/CW Stocked Lakes | City |
| 2009 Trout Stocked Lakes | State Parks |
| Fish Passage Projects | State Gamelands |
| 2009 WW/CW Stocked Water | State Forest |



Watershed: Monocacy

PFBC Region: Southcentral

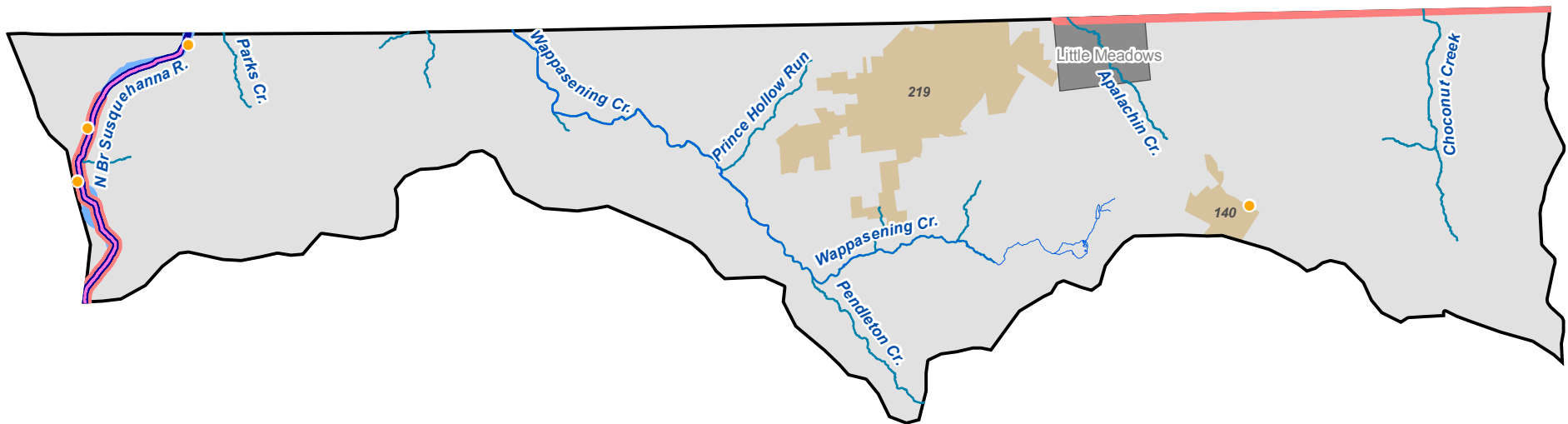
Priority: 46

General Description: Located in Adams County, this 145,581 acre watershed is within DCNR’s South Mountain Conservation Landscape Initiative. The Gettysburg battlefields are located in the watershed. The Commission stocks Marsh Creek, Little Marsh Creek, Tom’s Creek, and Middle Creek. Segments of Marsh Creek and Little Marsh Creek are designated natural trout reproduction. The Michaux State Forest creates the western boundary of the watershed. Carroll Valley Borough, the largest borough in the watershed in terms of land area, has two lakes that offer boating and fishing (Lake May and Lake Kay).

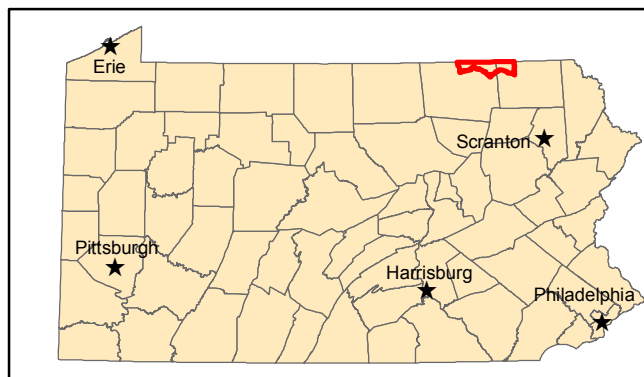
Stakeholder Input: Little Marsh Creek at the bridge at Railroad Lane down to Orrtanna needs more access. The boat launch and parking area at Lake May could use some improvements.

CRITERIA	Evaluation Result	SCORE	Fishing Access	Boating Access
Linear Miles Stocked	25.16	2	2	
Number Stocked Lakes	0	0	0	0
Number Boating Facility Grant	0	0		0
Number Fish Passage/Habitat Projects	0	0	0	
Water Trail/River Conservation Plan (RCP)	None	0	0	0
Number Access Improvements Identified by Stakeholders	2	1	1	1
Total Population	41,203	1	1	1
Population Change	86.86	6	6	6
Species Special Concern Density Per Square Mile	0.07	2	2	2
Percent Public Land	2.042	1	1	1
Number Accesses/10 Miles of Stream Order \geq 3	0.000	0	0	0
Current Number Fish Licenses	2,590	1	1	
Current Number Boat Registrants	1,315	2		2
Current Fish Licensees - Percent of Total Population	6.29	2	2	
Current Boat Registrants - Percent of Total Population	3.19	3		3
WW/CW Linear Miles Stocked	0	0	0	
WW/CW Trout Stocked Lakes	0	0	0	0
Number Accesses/10 miles of Stream Order \geq 5	0	0		0
Total Score		21	16	16
Bonus- Funding Available		0	0	0
Final Score		21	16	16

MAP 68. Pennsylvania Fishing and Boating Access Strategy Owego-Wappasening Watershed



- Habitat Projects - Lakes
- Habitat Projects - Flowing Waters
- Boating Access Grant Location
- Existing Accesses
- 2009 WW/CW Stocked Lakes
- 2009 Trout Stocked Lakes
- Fish Passage Projects
- 2009 WW/CW Stocked Water
- Water Trails
- Improvement Locations
- Borough
- City
- State Parks
- State Forest
- State Gamelands



Watershed: Owego-Wappasening

PFBC Region: Northeast

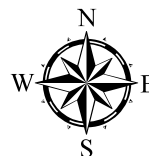
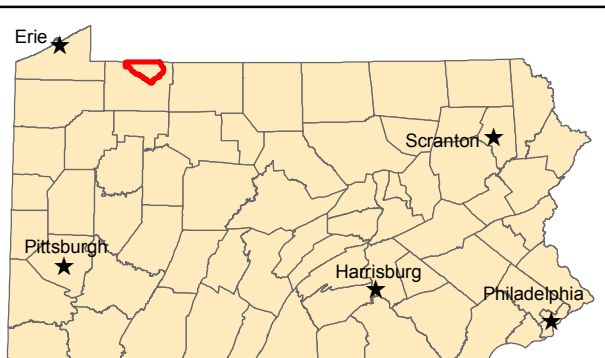
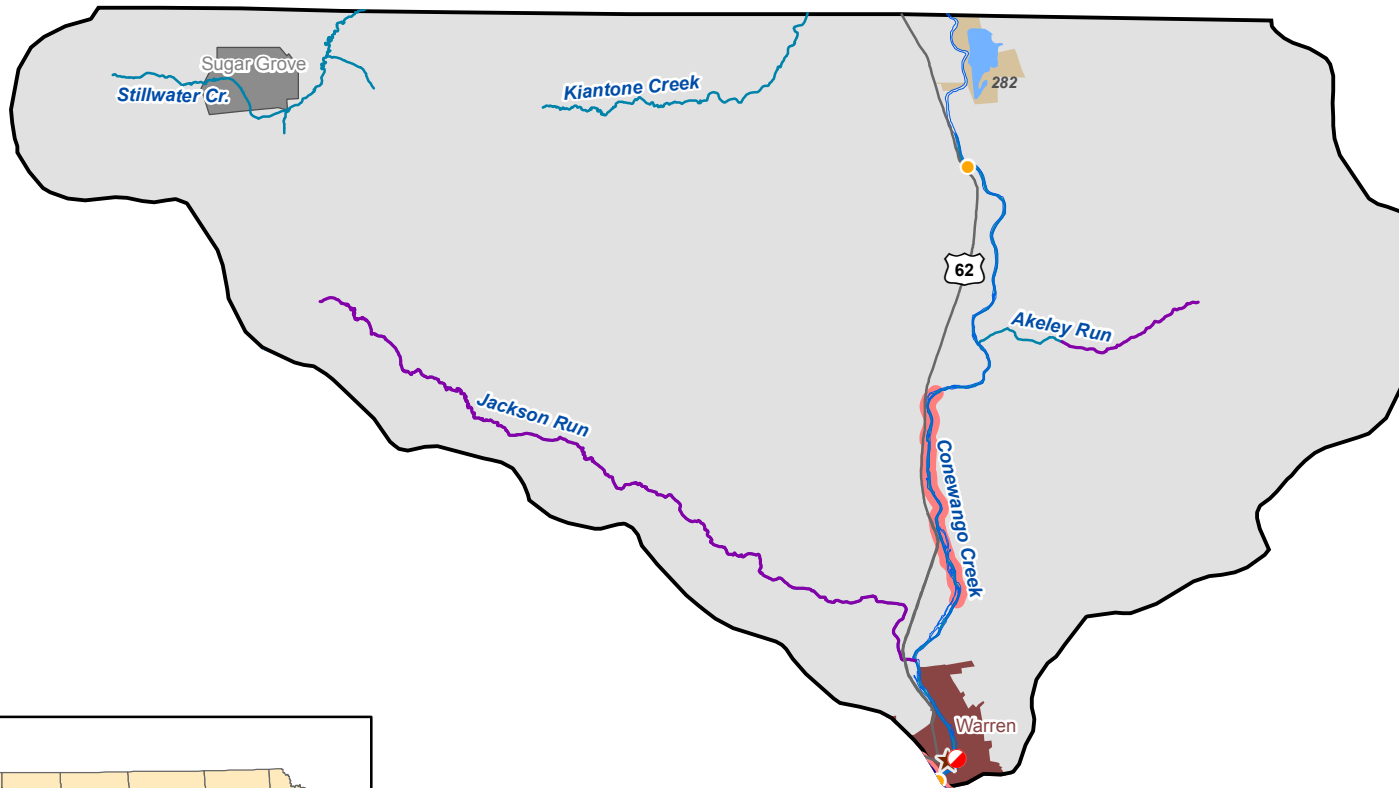
Priority: 47

General Description: Located in Susquehanna and Bradford counties, this watershed is 92,075 acres. The final stretch of the North Branch of the Susquehanna River, designated as a water trail, flows through the watershed. Generally, there is very little formal access on any of the streams and creeks in the watershed. The majority of the public land is owned by the Game Commission. The Apalachin Creek and its tributary are designated natural trout reproduction. The Commission does stock this stretch of the North Branch of the Susquehanna River.

Stakeholder Input: Stakeholders only suggested improving access on the North Branch of the Susquehanna River between Sayre and Sheshequn and Wysok.

CRITERIA	Evaluation Result	SCORE	Fishing Access	Boating Access
Linear Miles Stocked	0.00	0	0	
Number Stocked Lakes	0	0	0	0
Number Boating Facility Grant	0	0		0
Number Fish Passage/Habitat Projects	0	0	0	
Water Trail/River Conservation Plan (RCP)	WT	1	1	1
Number Access Improvements Identified by Stakeholders	2	1	1	1
Total Population	13,037	1	1	1
Population Change	-4.41	0	0	0
Species of Special Concern Density Per Square Mile	0.04	1	1	1
Percent Public Land	6.824	3	3	3
Number Accesses/10 Miles of Stream Order \geq 3	0.949	5	5	5
Current Number Fish Licenses	836	1	1	
Current Number Boat Registrants	440	1		1
Current Fish Licensees - Percent of Total Population	6.41	3	3	
Current Boat Registrants - Percent of Total Population	3.37	3		3
WW/CW Linear Miles Stocked	6.75	1	1	
WW/CW Trout Stocked Lakes	0	0	0	0
Number Accesses/10 Miles of Stream Order \geq 5	0	0		0
Total Score		21	17	16
Bonus- Funding Available		0	0	0
Final Score		21	17	16

MAP 69. Pennsylvania Fishing and Boating Access Strategy Conewango Watershed



- | | |
|-----------------------------------|--------------------------|
| Habitat Projects - Lakes | 2009 Trout Stocked Water |
| Habitat Projects - Flowing Waters | Water Trails |
| Boating Access Grant Location | Improvement Locations |
| Existing Accesses | Borough |
| 2009 WW/CW Stocked Lakes | City |
| 2009 Trout Stocked Lakes | State Parks |
| Fish Passage Projects | State Gamelands |
| 2009 WW/CW Stocked Water | State Forest |

Watershed: Conewango

PFBC Region: Northwest

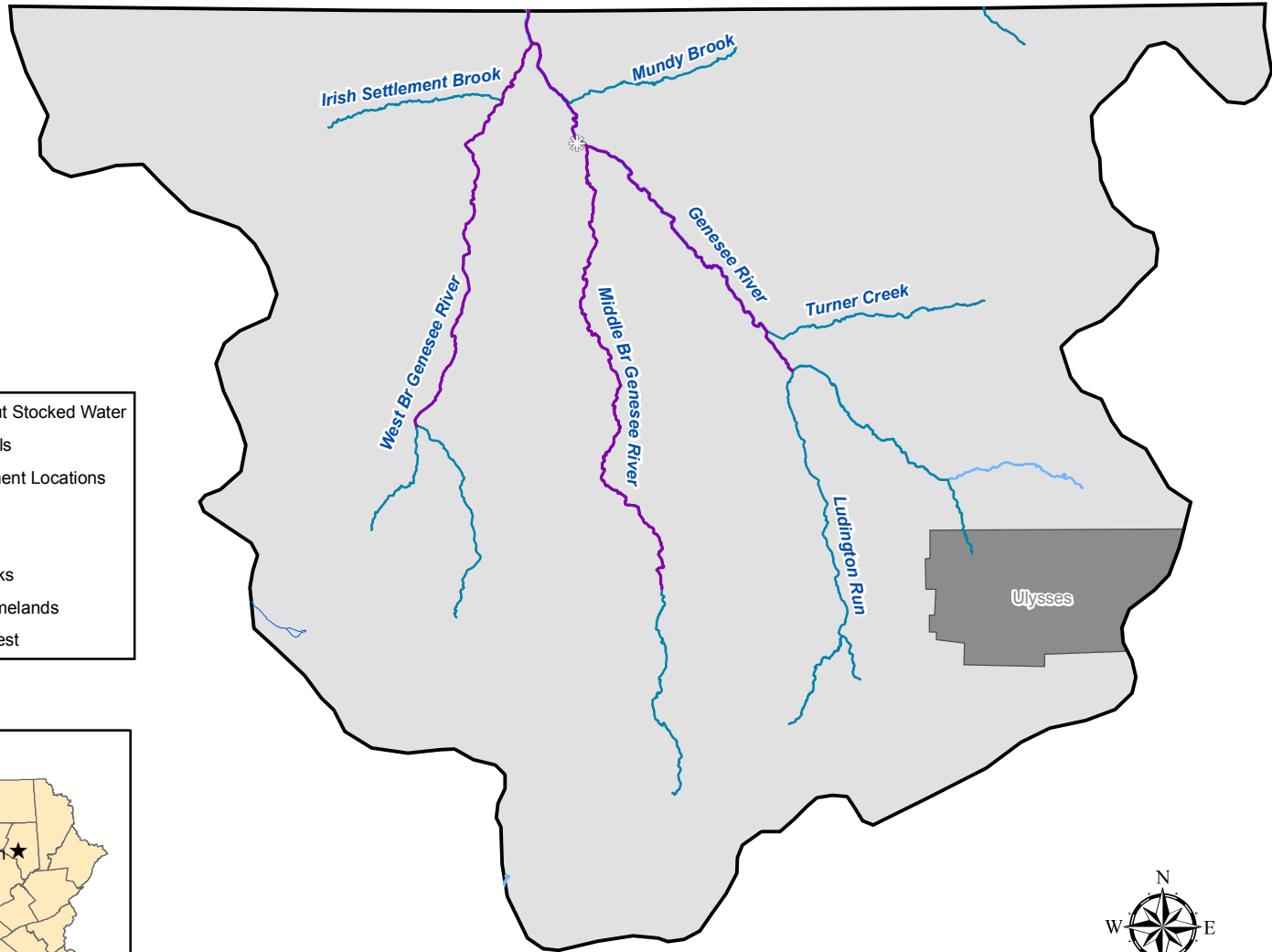
Priority: 48

General Description: Located entirely in Warren County, the Game Commission owns the only public lands in this 88,563 acre watershed. The Commission stocks Jackson Run and Akeley Run. Tributaries of Conewango Creek are designated trout natural reproduction. The Commission is in the process of removing a dam on Conewango Creek.

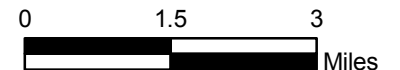
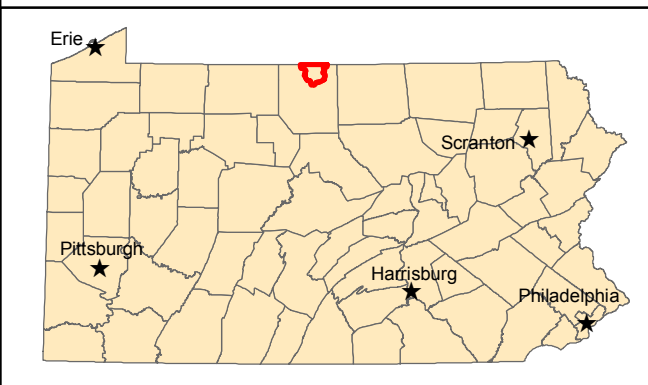
Stakeholder Input: Stakeholders noted there are no formalized public access locations on the Conewango Creek.

CRITERIA	Evaluation Result	SCORE	Fishing Access	Boating Access
Linear Miles Stocked	15.43	1	1	
Number Stocked Lakes	0	0	0	0
Number Boating Facility Grant	0	0		0
Number Fish Passage/Habitat Projects	1	1	1	
Water Trail/River Conservation Plan (RCP)	None	0	0	0
Number Access Improvements Identified by Stakeholders	1	1	1	1
Total Population	13,216	1	1	1
Population Change	-8.42	0	0	0
Species Special Concern Density Per Square Mile	0.21	5	5	5
Percent Public Land	0.488	1	1	1
Number Access/10 Miles of Stream Order \geq 3	0.268	1	1	1
Current Number Fish Licenses	767	1	1	
Current Number Boat Registrants	422	2		2
Current Fish Licensees - Percent of Total Population	5.80	2	2	
Current Boat Registrants - Percent of Total Population	3.19	3		3
WW/CW Linear Miles Stocked	0	0	0	
WW/CW Trout Stocked Lakes	0	0	0	0
Number Accesses/10 Miles of Stream Order \geq 5	0	0		0
Total Score		19	14	14
Bonus- Funding Available		0		
Final Score		19	14	14

MAP 70. Pennsylvania Fishing and Boating Access Strategy Upper Genesee Watershed



- | | |
|-----------------------------------|--------------------------|
| Habitat Projects - Lakes | 2009 Trout Stocked Water |
| Habitat Projects - Flowing Waters | Water Trails |
| Boating Access Grant Location | Improvement Locations |
| Existing Accesses | Borough |
| 2009 WW/CW Stocked Lakes | City |
| 2009 Trout Stocked Lakes | State Parks |
| Fish Passage Projects | State Gamelands |
| 2009 WW/CW Stocked Water | State Forest |



Watershed: Upper Genesee

PFBC Region: Northcentral

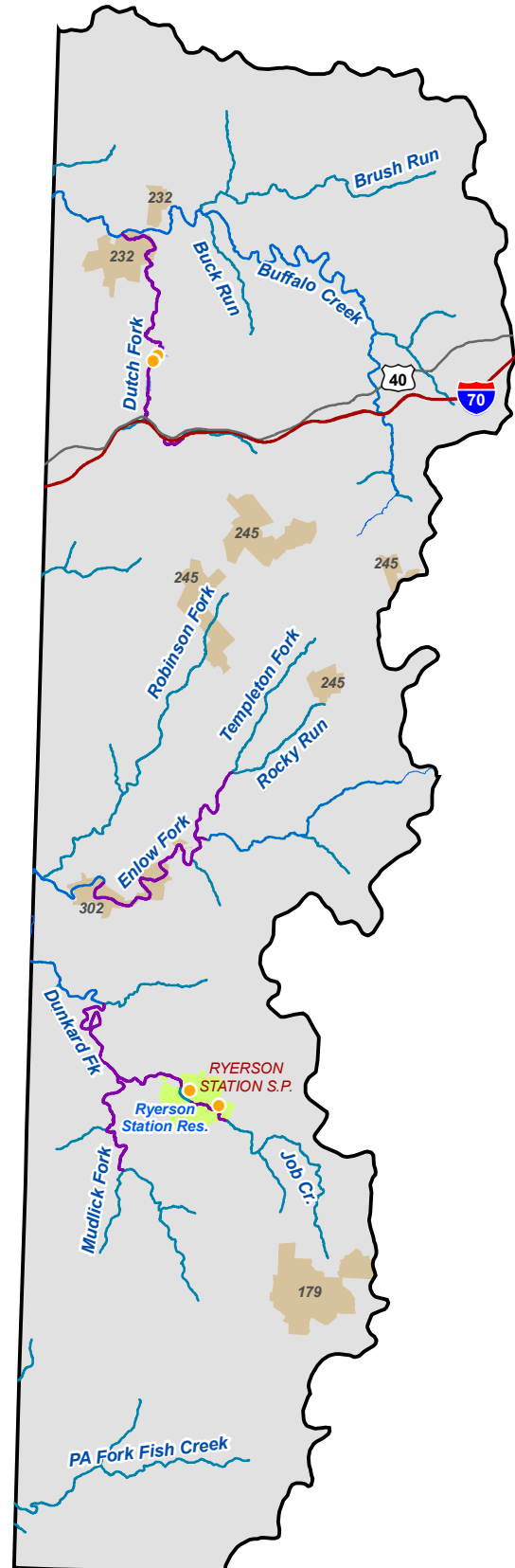
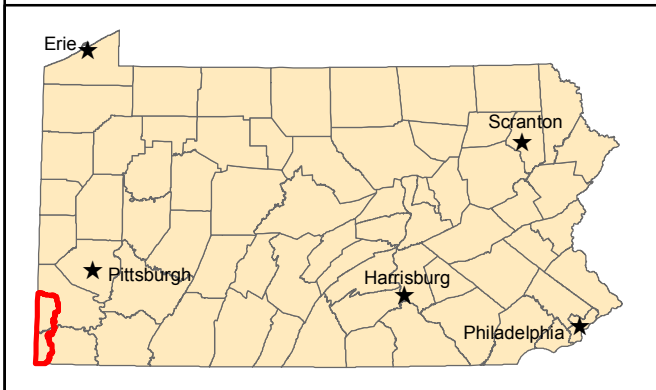
Priority: 49

General Description: One of the smaller watersheds both in acreage and population to be evaluated, this watershed is located within Potter County and the Pennsylvania Wilds. Within the 61,159 acres of the watershed, the Genesee River is the only major waterway. The Genesee is stocked in some stretches but natural trout reproduction is also taking place in other stretches. Funding the Sinnemahoning Creek Watershed Restoration funds (SCWR) could pay for access improvements identified at a later date because the watershed is located in Potter County. The *North Central Greenway Plan* is under development and should be consulted when this watershed is evaluated.

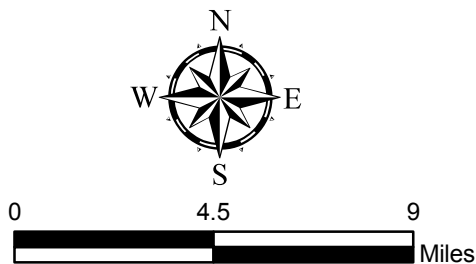
Stakeholder Input: No stakeholder input on access improvements.

CRITERIA	Evaluation Result	SCORE	Fishing Access	Boating Access
Linear Miles Stocked	17.58	1	1	
Number Stocked Lakes	0	0	0	0
Number BFG	0	0		0
Number Fish Passage/Habitat Projects	1	1	1	
Water Trail/River Conservation Plan (RCP)	None	0	0	0
Number Access Improvements Identified by Stakeholders	0	0	0	0
Total Population	2,180	1	1	1
Population Change	4.86	2	2	2
SSC Density	0.07	2	2	2
Percent Public Land	0.000	0	0	0
Number Accesses/10 Miles of Stream Order \geq 3	0.000	0	0	0
Current Number Fish Licenses	153	1	1	1
Current Number Boat Registrants	53	1		
Current Fish Licensees - Percent of Total Population	7.02	3	3	
Current Boat Registrants - Percent of Total Population	2.43	2		2
WW/CW Linear Miles Stocked	0.00	0	0	
WW/CW Trout Stocked Lakes	0	0	0	0
Number Accesses/10 Miles of Stream Order \geq 5	0.000	0		0
Total Score		14	11	8
Bonus- Funding Available	SCWR	5	5	5
Final Score		19	16	13

MAP 71. Pennsylvania Fishing and Boating Access Strategy Upper Ohio-Wheeling Watershed



- | | |
|-----------------------------------|--------------------------|
| Habitat Projects - Lakes | 2009 Trout Stocked Water |
| Habitat Projects - Flowing Waters | WaterTrails |
| Boating Access Grant Location | Improvement Locations |
| Existing Accesses | State Gamelands |
| 2009 WW/CW Stocked Lakes | Borough |
| 2009 Trout Stocked Lakes | City |
| Fish Passage Projects | State Parks |
| 2009 WW/CW Stocked Water | State Forest |



Watershed: Upper Ohio-Wheeling

PFBC Region: Southwest

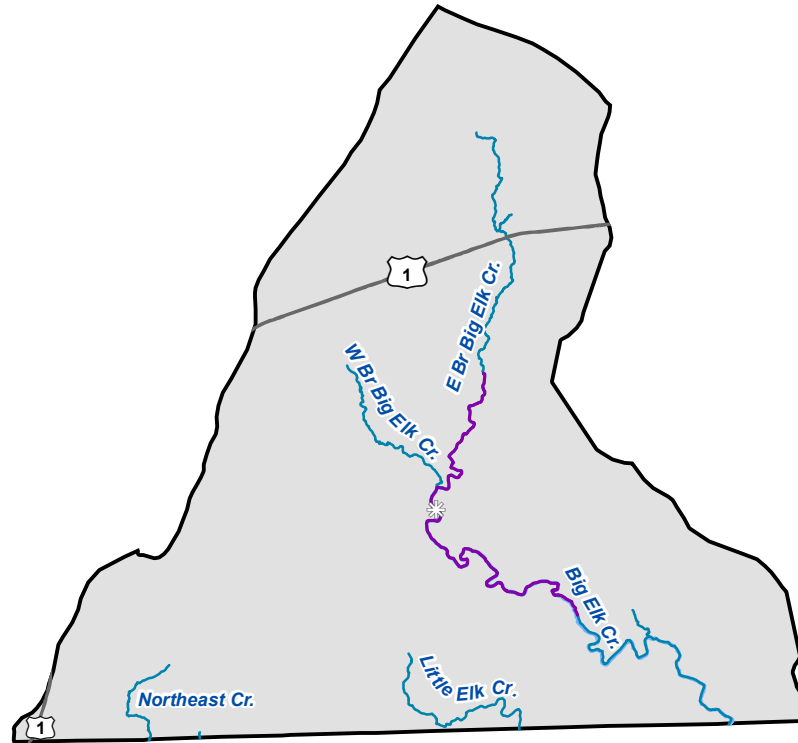
Priority: 50

General Description: The Commission stocks Dutch Fork, Enlow Fork, Mudlick Fork and Dunkard Fork in this 199,343 acre watershed located in Washington and Greene counties.

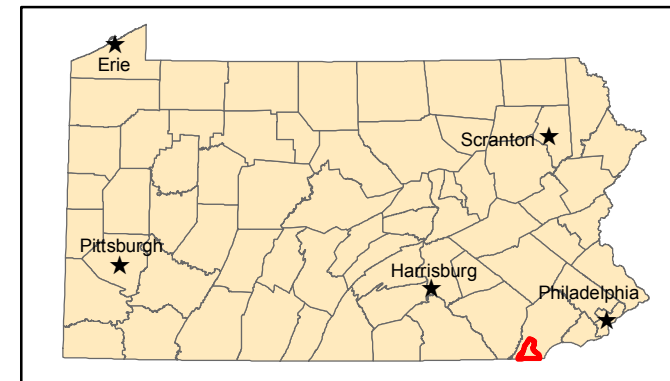
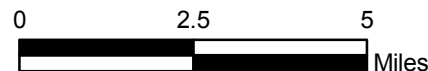
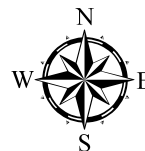
Stakeholder Input: No access improvements listed.

CRITERIA	Evaluation Result	SCORE	Fishing Access	Boating Access
Linear Miles Stocked	28.04	2	2	
Number Stocked Lakes	0	0	0	0
Number Boating Facility Grant	0	0		0
Number Fish Passage/Habitat Projects	0	0	0	
Water Trail/River Conservation Plan (RCP)	None	0	0	0
Number Access Improvements Identified by Stakeholders	0	0	0	0
Total Population	14,037	1	1	1
Population Change	-9.34	0	0	0
Species Special Concern Density Per Square Mile	0.03	1	1	1
Percent Public Land	4.020	2	2	2
Number Access/10 Miles of Stream Order ≥ 3	0.286	2	2	2
Current Number Fish Licenses	1,304	1	1	
Current Number Boat Registrants	434	2		2
Current Fish Licensees - Percent of Total Population	9.29	4	4	
Current Boat Registrants - Percent of Total Population	3.09	2		2
WW/CW Linear Miles Stocked	0.00	0	0	
WW/CW Trout Stocked Lakes	0	0	0	0
Number Accesses/10 miles of Stream Order ≥ 5	1.345	2		2
Total Score		19	13	12
Bonus- Funding Available		0	0	0
Final Score		19	13	12

MAP 72. Pennsylvania Fishing and Boating Access Strategy Chester-Sassafras Watershed



- | | |
|-----------------------------------|--------------------------|
| Habitat Projects - Lakes | 2009 Trout Stocked Water |
| Habitat Projects - Flowing Waters | Water Trails |
| Boating Access Grant Location | Improvement Locations |
| Existing Accesses | Borough |
| 2009 WW/CW Stocked Lakes | City |
| 2009 Trout Stocked Lakes | State Parks |
| Fish Passage Projects | State Gamelands |
| 2009 WW/CW Stocked Water | State Forest |



Watershed: Chester-Sassafras

PFBC Region: Southeast

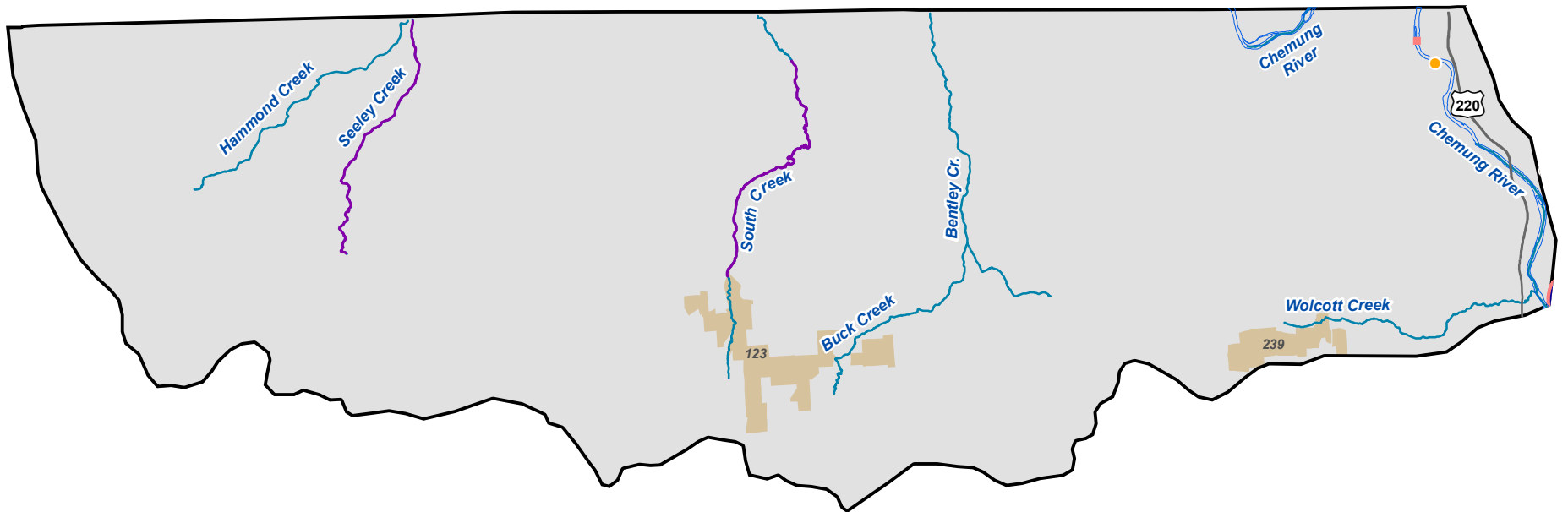
Priority: 51

General Description: Located in Chester County, this 140,204 acre watershed is expected to almost double its population by 2020. The Commission stocks Big Elk Creek. There are no documented formal access areas in this small watershed.

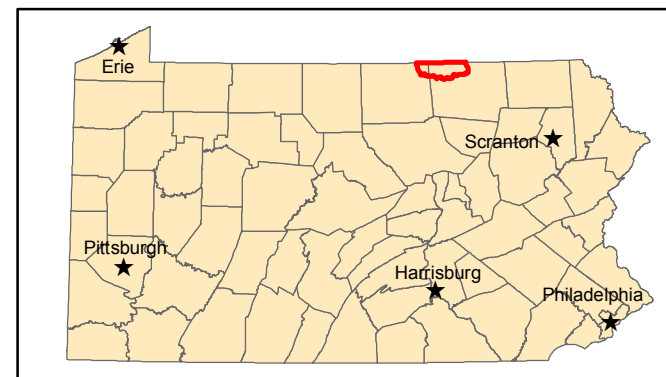
Stakeholder Input: No stakeholder input was received for this watershed.

CRITERIA	Evaluation Result	SCORE	Fishing Access	Boating Access
Linear Miles Stocked	7.38	1	1	
Number Stocked Lakes	0	0	0	0
Number Boating Facility Grant	0	0		0
Number Fish Passage/Habitat Projects	1	1	1	
Water Trail/River Conservation Plan (RCP)	RCP	1	1	1
Number Access Improvements Identified by Stakeholders	0	0	0	0
Total Population	17,092	1	1	1
Population Change	48.95	5	5	5
Species Special Concern Density Per Square Mile	0.17	4	4	4
Percent Public Land	0	0	0	0
Number Accesses/10 Miles of Stream Order \geq 3	0	0	0	0
Current Number Fish Licenses	882	1	1	
Current Number Boat Registrants	277	1		1
Current Fish Licensees - Percent of Total Population	5.16	2	2	
Current Boat Registrants - Percent of Total Population	1.62	1		1
WW/CW Linear Miles Stocked	0	0	0	
WW/CW Trout Stocked Lakes	0	0	0	0
Number Accesses/10 Miles of Stream Order \geq 5	0	0		0
Total Score		18	16	13
Bonus- Funding Available		0	0	0
Final Score		18	16	13

MAP 73. Pennsylvania Fishing and Boating Access Strategy Chemung Watershed



- Habitat Projects - Lakes
- Habitat Projects - Flowing Waters
- Boating Access Grant Location
- Existing Accesses
- 2009 WW/CW Stocked Lakes
- 2009 Trout Stocked Lakes
- Fish Passage Projects
- 2009 WW/CW Stocked Water
- Water Trails
- Improvement Locations
- Borough
- City
- State Parks
- State Forest
- State Gamelands



Watershed: Chemung

PFBC Region: Northeast

Priority: 52

General Description: Located in Bradford County, the watershed encompasses 117,084 acres. The Chemung River is the major waterway in the watershed. A small stretch of the North Branch Susquehanna Water Trail adjoins the eastern boundary line of the watershed. Stocked streams in the watershed are Seeley Creek and South Creek.

Stakeholder Input: Additional access was recommended for the Chemung River from Tozers Landing to the New York border.

CRITERIA	Evaluation Result	SCORE	Fishing Access	Boating Access
Linear Miles Stocked	10.37	1	1	
Number Stocked Lakes	0	0		0
Number BFG	0	0	0	0
Number Fish Passage/Habitat Projects	0	0	0	
Water Trail/River Conservation Plan (RCP)	Water Trail	1	1	1
Number Access Improvements Identified by Stakeholders	1	1	1	1
Total Population	12,935	1	1	1
Population Change	0.05	1	1	1
Species Special Concern Density Per Square Mile	0.00	0	0	0
Percent Public Land	1.911	1	1	1
Number Access/10Miles of Stream Order > <u>3</u>	0.245	1	1	
Current Number Fish Licenses	958	1	1	
Current Number Boat Registrants	409	1	0	1
Current Fish Licensees - Percent of Total Population	7.41	3	3	
Current Boat Registrants - Percent of Total Population	3.16	3		3
WW/CW Linear Miles Stocked	0	0	0	
WW/CW Trout Stocked Lakes	0	0	0	0
Number Accesses/10 miles of Stream Order > <u>5</u>	0	0	0	0
Total Score		15	11	9
Bonus- Funding Available		0	0	0
Final Score		15	11	9