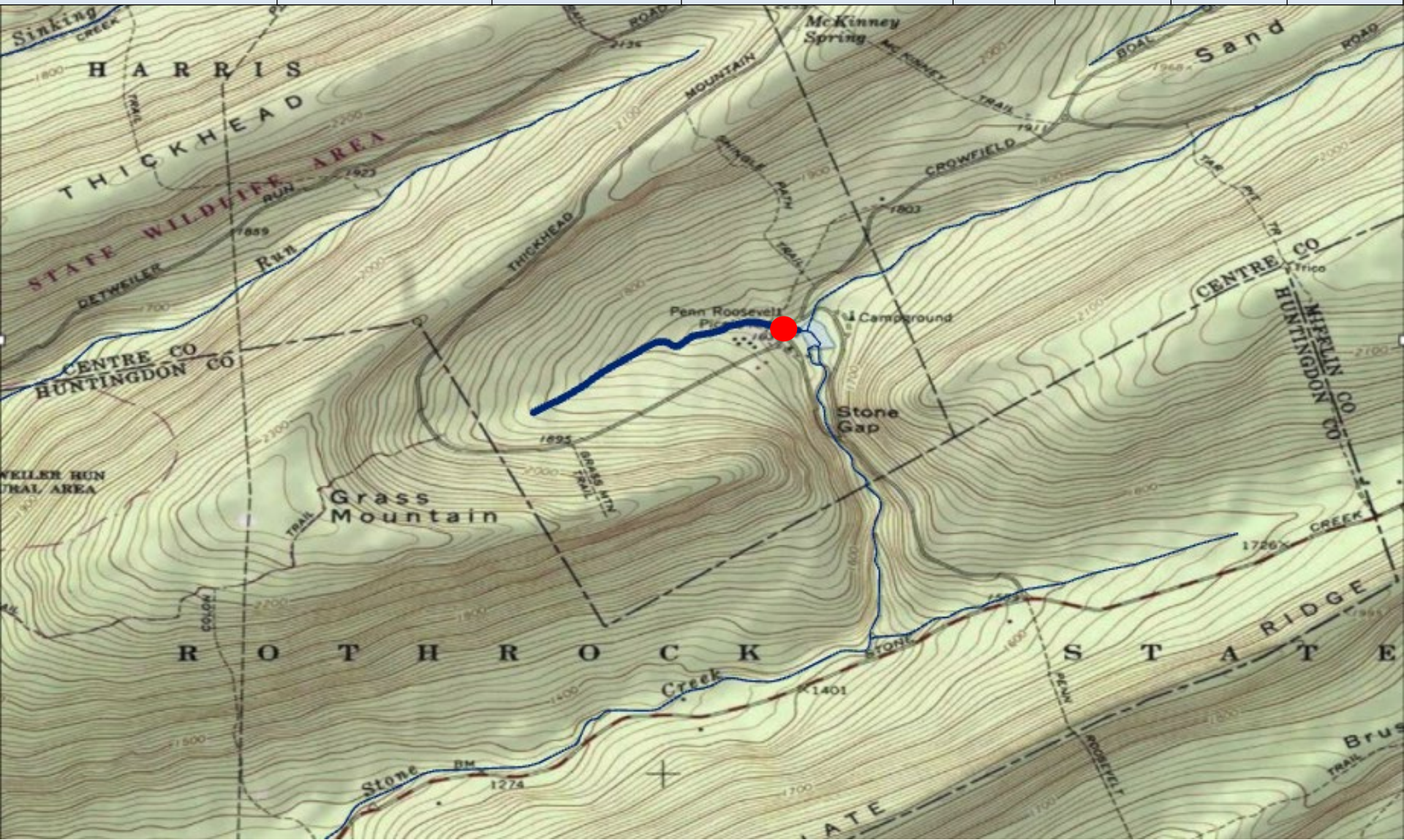


Wild Trout Additions

- Slides 2 - 40

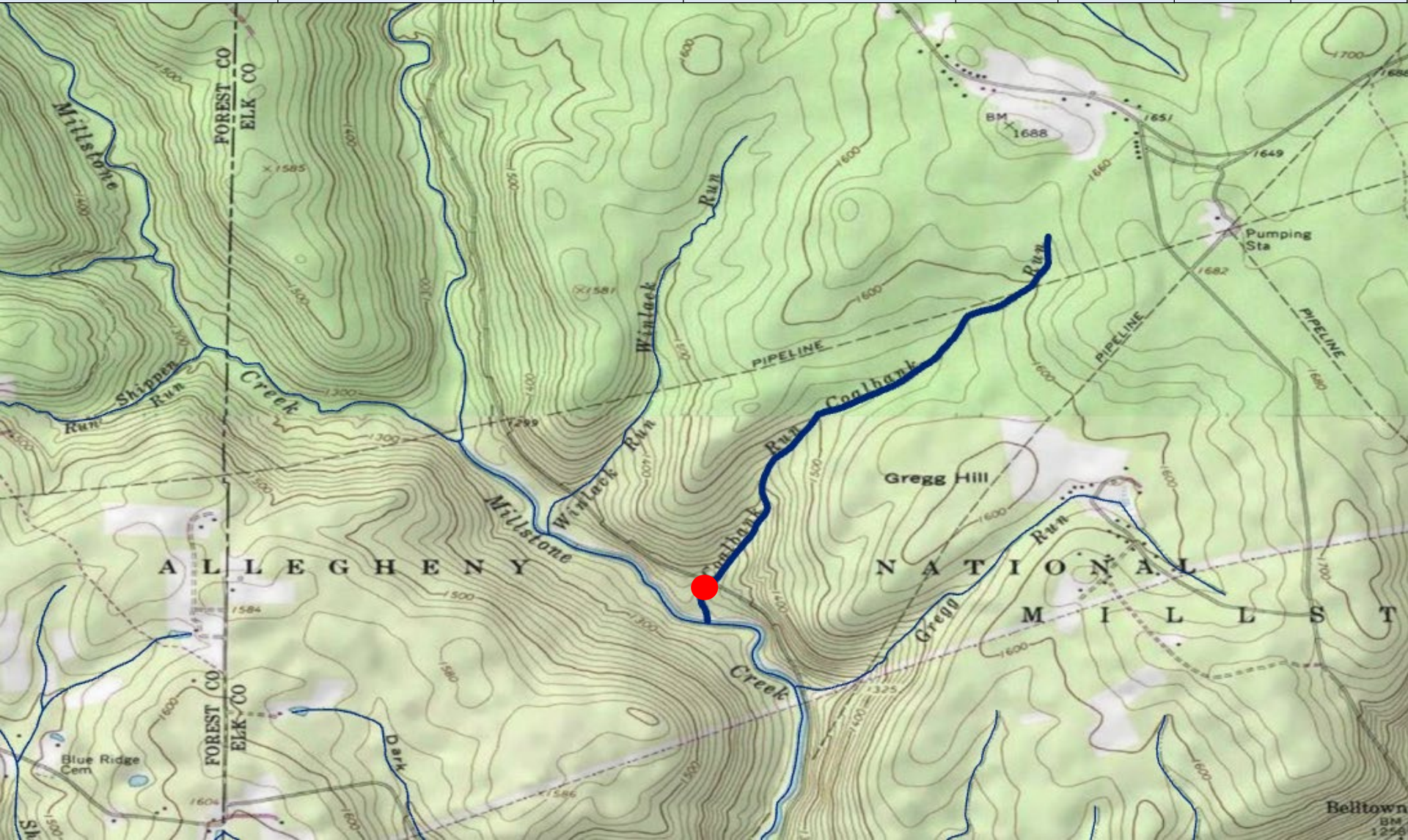
County of Mouth	Stream Name	Tributary To	Wild Trout Limits	Site River-mile ●	Species	Catch	Length (inches)
Centre	UNT to Standing Stone Creek (RM 34.29)	Standing Stone Creek	Headwaters to mouth	0.06	Brook Brown	97 1	1-6 8



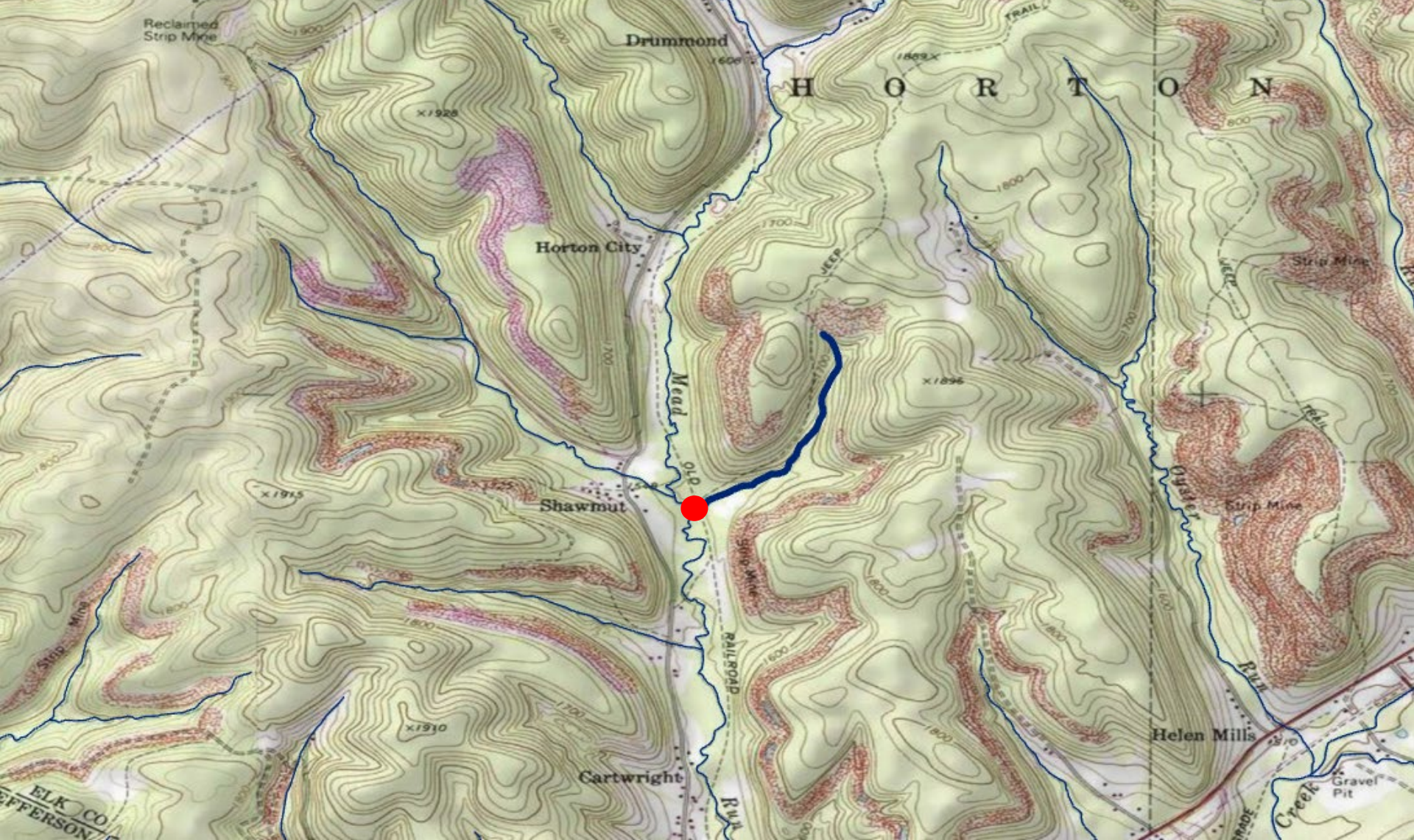
County of Mouth	Stream Name	Tributary To	Wild Trout Limits	Site River-mile ●	Species	Catch	Length (inches)
Centre	UNT to Wolf Run (RM 0.88)	Wolf Run	Headwaters to mouth	0.02	Brook	17	1-6



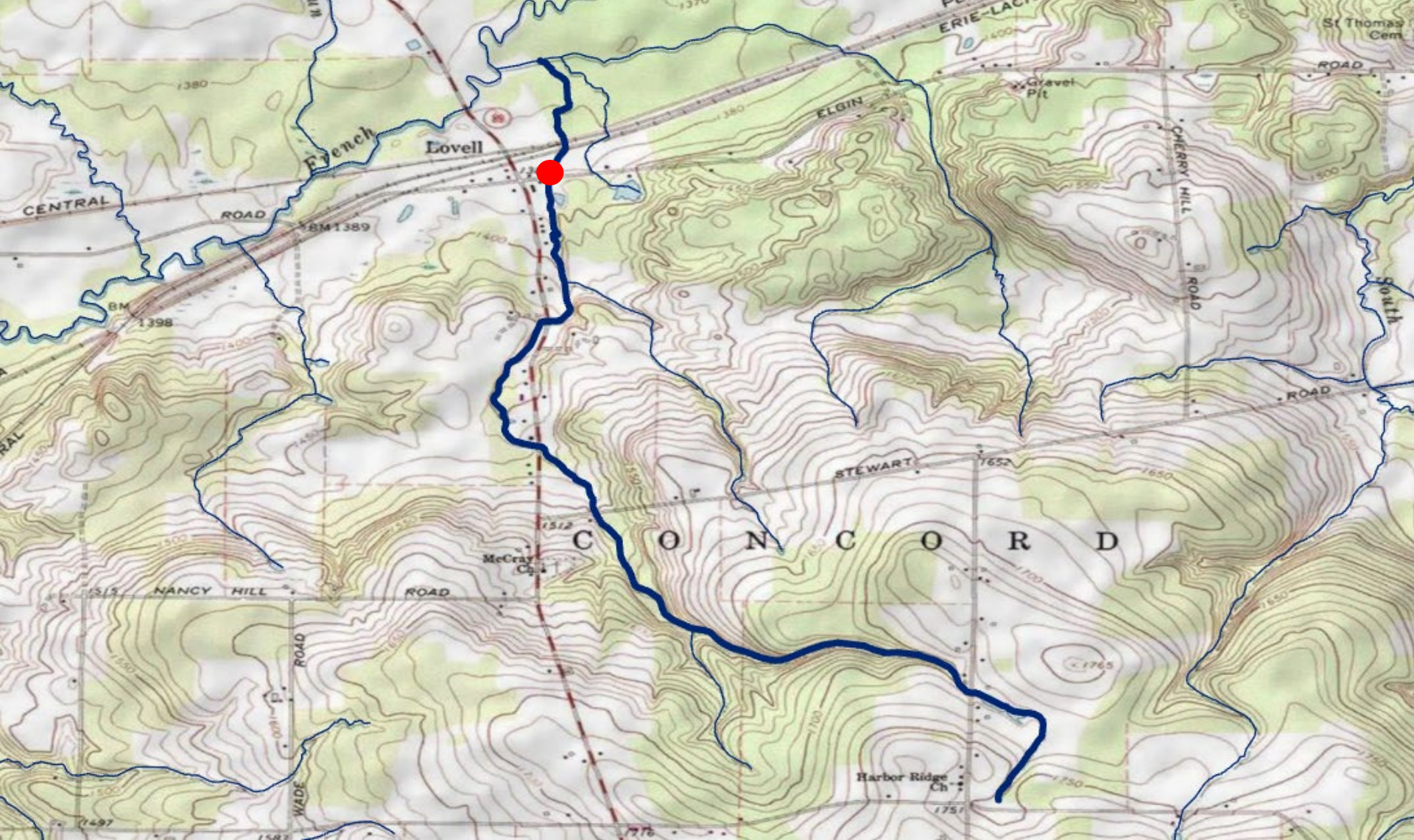
County of Mouth	Stream Name	Tributary To	Wild Trout Limits	Site River-mile ●	Species	Catch	Length (inches)
Elk	Coalbank Run	Millstone Creek	Headwaters to mouth	0.10	Brook Brown	6 1	2-6 5



County of Mouth	Stream Name	Tributary To	Wild Trout Limits	Site River-mile ●	Species	Catch	Length (inches)
Elk	UNT to Mead Run (RM 2.52)	Mead Run	Headwaters to mouth	0.01	Brook	29	2-8



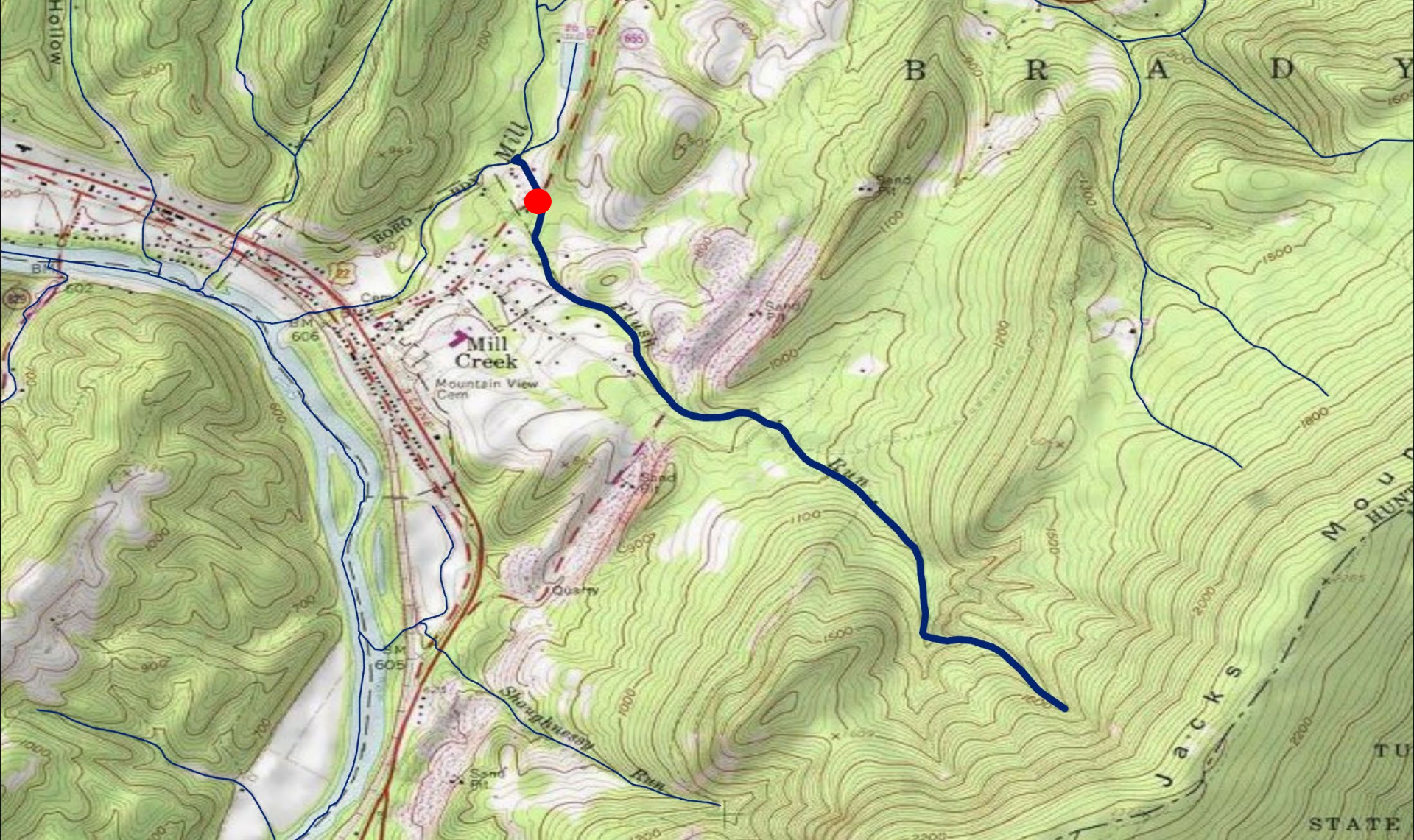
County of Mouth	Stream Name	Tributary To	Wild Trout Limits	Site River-mile ●	Species	Catch	Length (inches)
Erie	UNT (RM 0.10) to UNT to South Branch French Creek (RM 17.24)	UNT to South Branch French Creek (RM 17.24)	Headwaters to mouth	0.39	Brook	8	3-7



County of Mouth	Stream Name	Tributary To	Wild Trout Limits	Site River-mile ●	Species	Catch	Length (inches)
Erie	UNT to Spencer Creek (RM 1.94)	Spencer Creek	Headwaters to mouth	0.27	Brook	3	3-5



County of Mouth	Stream Name	Tributary To	Wild Trout Limits	Site River-mile ●	Species	Catch	Length (inches)
Huntingdon	Flush Run	Mill Creek	Headwaters to mouth	0.15	Brown	4	6-9



County of Mouth	Stream Name	Tributary To	Wild Trout Limits	Site River-mile ●	Species	Catch	Length (inches)
Huntingdon	Gensimore Run	Little Juniata River	Headwaters to mouth	0.01	Brown	3	1-2



County of Mouth	Stream Name	Tributary To	Wild Trout Limits	Site River-mile ●	Species	Catch	Length (inches)
Huntingdon	Saddler Creek	Mill Creek	Headwaters to mouth	0.44	Brown	13	2-14



County of Mouth	Stream Name	Tributary To	Wild Trout Limits	Site River-mile ●	Species	Catch	Length (inches)
Indiana	UNT to Dixon Run (RM 4.11)	Dixon Run	Headwaters to mouth	0.04	Brown	6	3-11



County of Mouth	Stream Name	Tributary To	Wild Trout Limits	Site River-mile ●	Species	Catch	Length (inches)
Lancaster	UNT to Mill Creek (RM 25.07)	Mill Creek	Headwaters to New Holland Reservoir	2.85	Brook	49	2-7



County of Mouth	Stream Name	Tributary To	Wild Trout Limits	Site River-mile ●	Species	Catch	Length (inches)
Lycoming	Frozen Run	Lycoming Creek	Headwaters to mouth	0.00	Brook Brown	1 7	3 2-6



County of Mouth	Stream Name	Tributary To	Wild Trout Limits	Site River-mile ●	Species	Catch	Length (inches)
Lycoming	Miners Run	Rock Run	Headwaters to mouth	0.06	Brook Brown	1 3	5 6-8



County of Mouth	Stream Name	Tributary To	Wild Trout Limits	Site River-mile ●	Species	Catch	Length (inches)
Lycoming	Red Run	Lycoming Creek	Headwaters to mouth	0.00	Brown	8	3-7



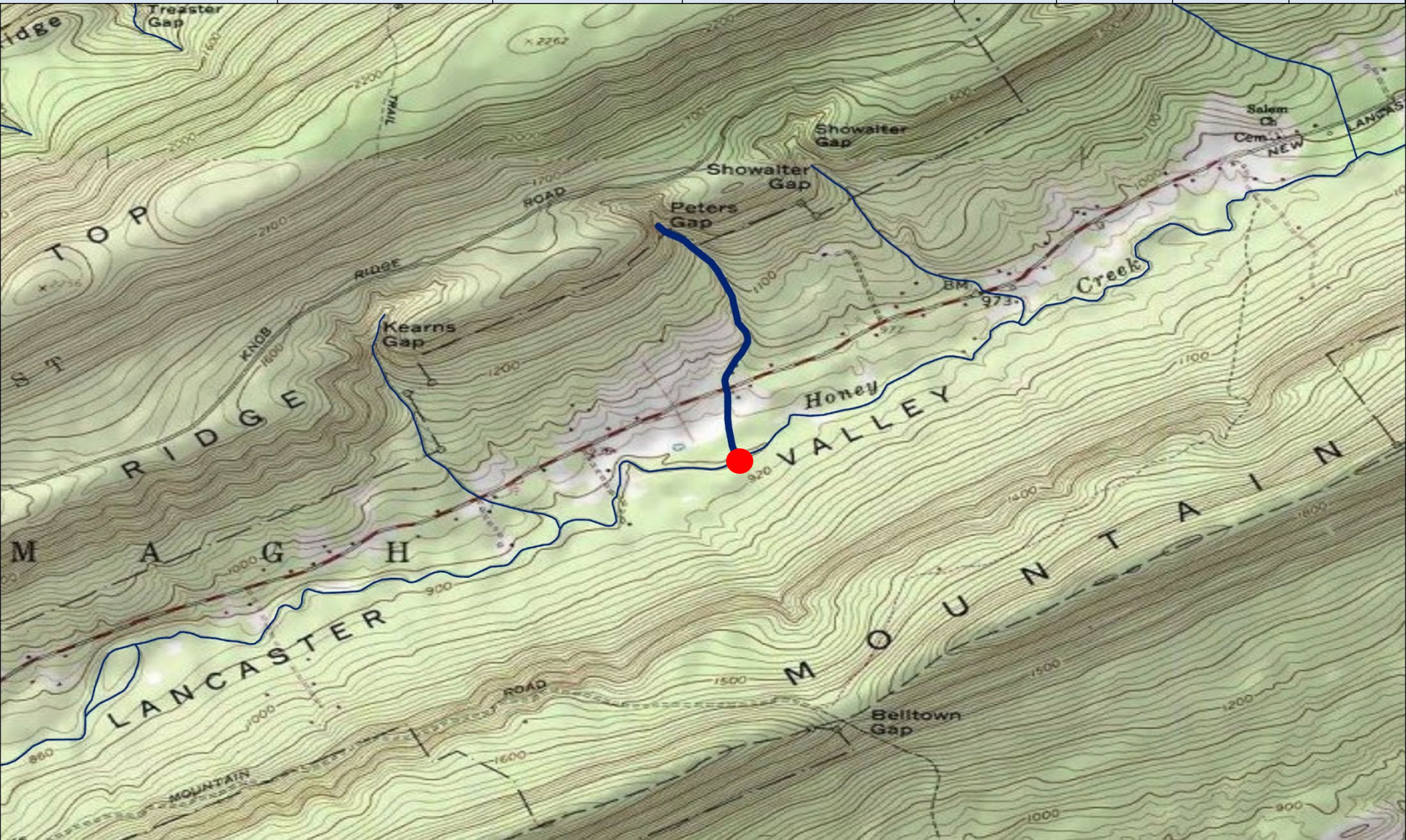
County of Mouth	Stream Name	Tributary To	Wild Trout Limits	Site River-mile ●	Species	Catch	Length (inches)
Mifflin	Black Gap Run	Treaster Run	Headwaters to mouth	0.02	Brook Brown	3 1	5 7



County of Mouth	Stream Name	Tributary To	Wild Trout Limits	Site River-mile ●	Species	Catch	Length (inches)
Mifflin	Chestnut Gap Run	Bear Gap Run	Headwaters to mouth	0.00	Brook Brown	72 1	2-7 7



County of Mouth	Stream Name	Tributary To	Wild Trout Limits	Site River-mile ●	Species	Catch	Length (inches)
Mifflin	Peters Gap Run	Honey Creek	Headwaters to mouth	0.00	Brook Brown	1 8	4 3-5



County of Mouth	Stream Name	Tributary To	Wild Trout Limits	Site River-mile ●	Species	Catch	Length (inches)
Mifflin	Reeds Gap Run	Honey Creek	Headwaters to mouth	0.03	Brook Brown	16 6	2-6 4-6



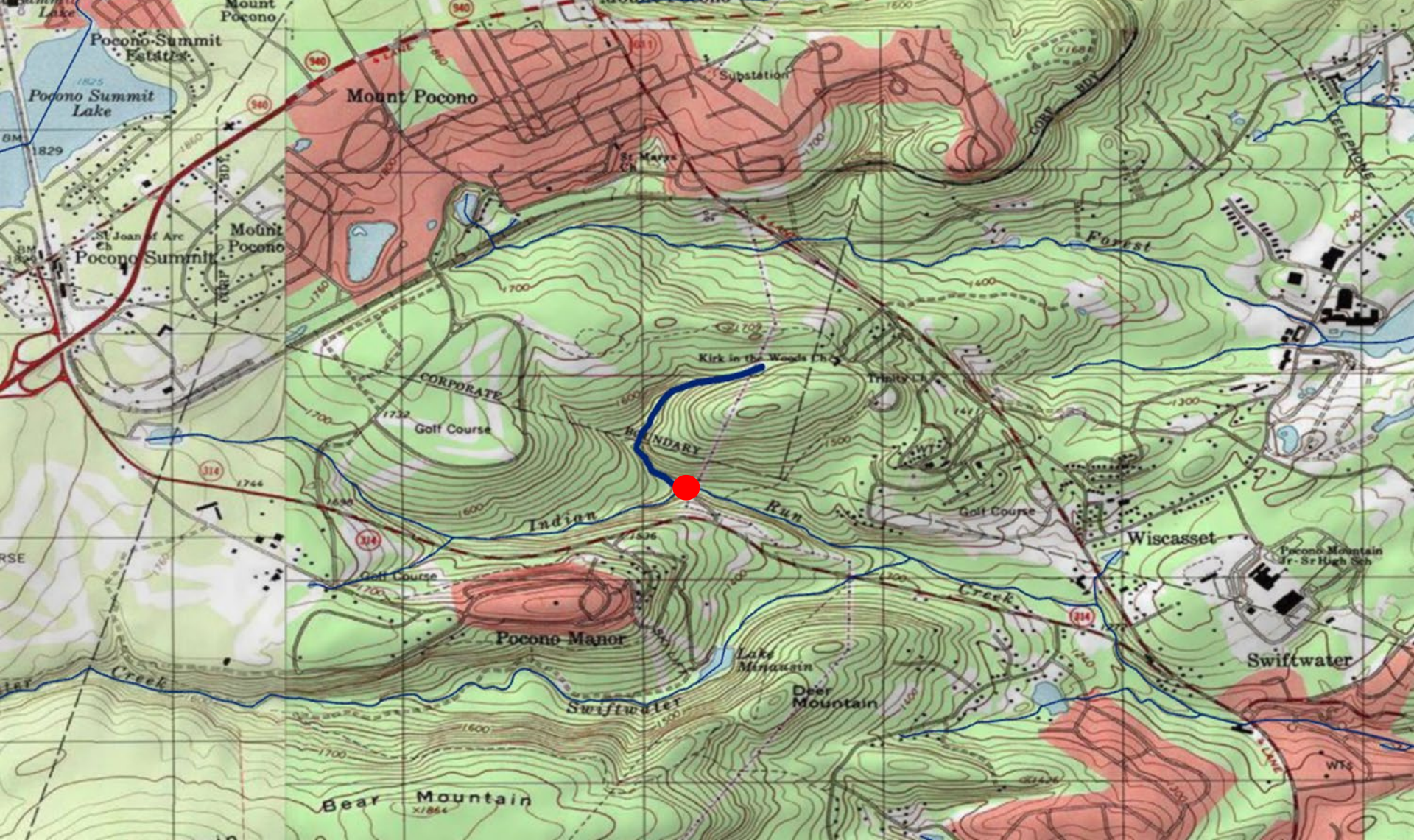
County of Mouth	Stream Name	Tributary To	Wild Trout Limits	Site River-mile ●	Species	Catch	Length (inches)
Mifflin	Showalter Gap Run	Honey Creek	Headwaters to mouth	0.00	Brook Brown	9 10	1-6 3-9



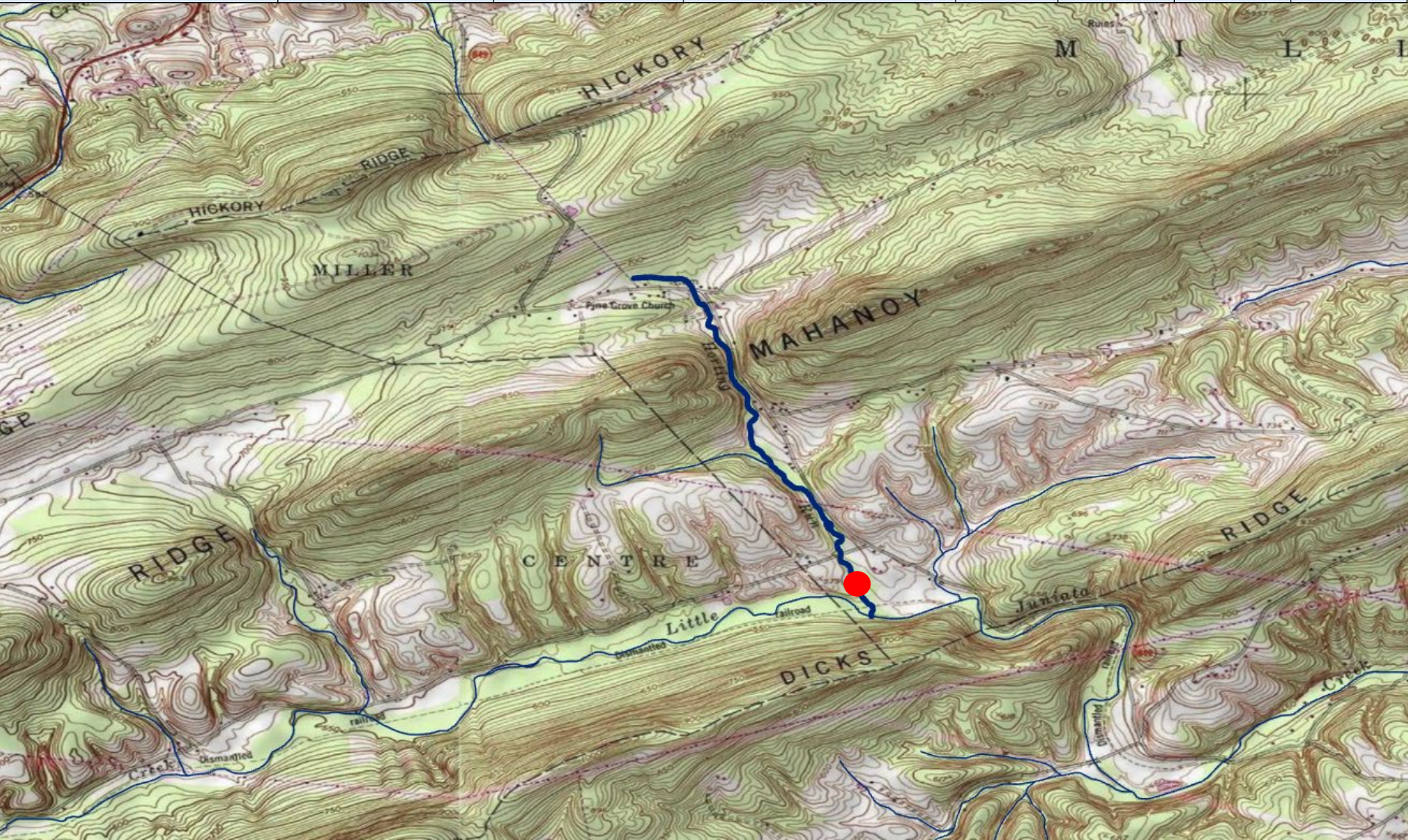
County of Mouth	Stream Name	Tributary To	Wild Trout Limits	Site River-mile ●	Species	Catch	Length (inches)
Mifflin	Weaver Gap Run	Honey Creek	Headwaters to mouth	0.00	Brook Brown	21 2	1-4 3-4



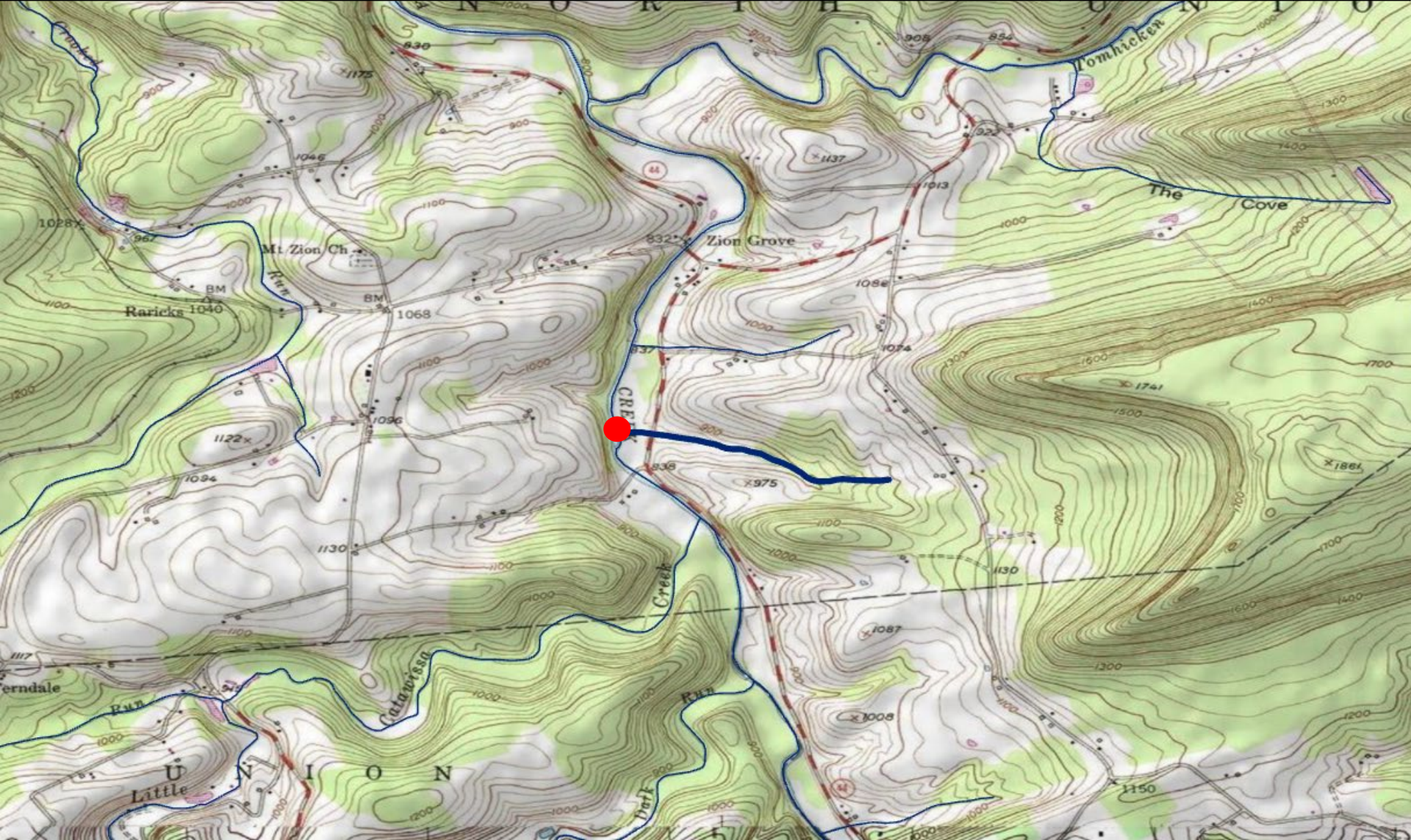
County of Mouth	Stream Name	Tributary To	Wild Trout Limits	Site River-mile ●	Species	Catch	Length (inches)
Monroe	UNT to Indian Run (RM 0.64)	Indian Run	Headwaters to mouth	0.00	Brook Brown	25 22	2-6 2-7



County of Mouth	Stream Name	Tributary To	Wild Trout Limits	Site River-mile ●	Species	Catch	Length (inches)
Perry	Horting Run	Little Juniata Creek	Headwaters to mouth	0.14	Brown	9	2-3



County of Mouth	Stream Name	Tributary To	Wild Trout Limits	Site River-mile ●	Species	Catch	Length (inches)
Schuylkill	UNT to Catawissa Creek (RM 23.85)	Catawissa Creek	Headwaters to mouth	0.00	Brook Brown	9 10	2-9 2-12



County of Mouth	Stream Name	Tributary To	Wild Trout Limits	Site River-mile ●	Species	Catch	Length (inches)
Somerset	UNT to Fall Creek (RM 1.75)	Fall Creek	Headwaters to mouth	0.00	Brook	6	2-9



County of Mouth	Stream Name	Tributary To	Wild Trout Limits	Site River-mile ●	Species	Catch	Length (inches)
Somerset	UNT to Higgins Run (RM 0.04)	Higgins Run	Headwaters to mouth	0.04	Brown	5	2



County of Mouth	Stream Name	Tributary To	Wild Trout Limits	Site River-mile ●	Species	Catch	Length (inches)
Somerset	UNT to Jones Mill Run (RM 2.72)	Jones Mill Run	Headwaters to mouth	0.00	Brook	33	1-6



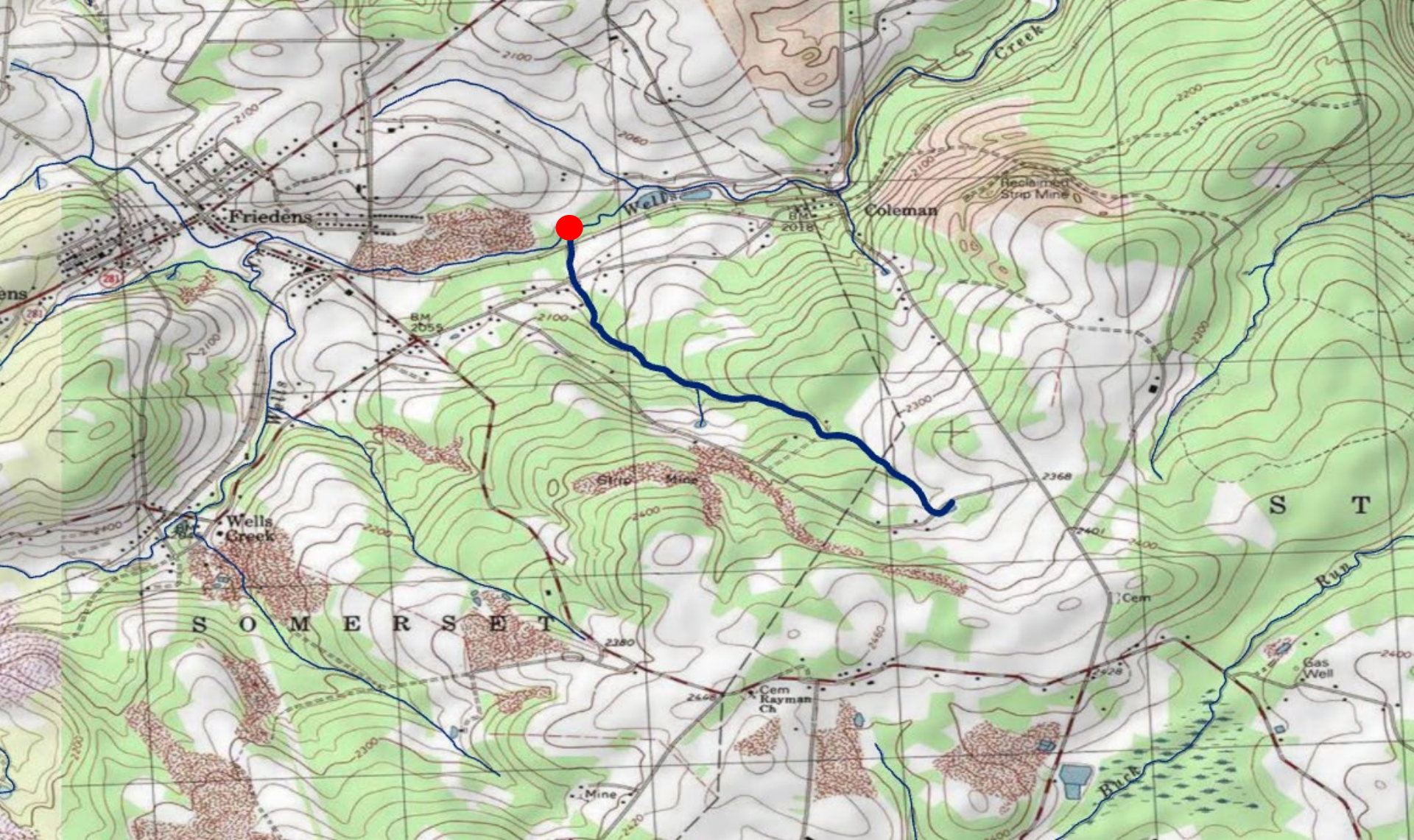
County of Mouth	Stream Name	Tributary To	Wild Trout Limits	Site River-mile ●	Species	Catch	Length (inches)
Somerset	UNT to Shafer Run (RM 2.63)	Shafer Run	Headwaters to mouth	0.02	Brown	4	4-11



County of Mouth	Stream Name	Tributary To	Wild Trout Limits	Site River-mile ●	Species	Catch	Length (inches)
Somerset	UNT to Shafer Run (RM 3.05)	Shafer Run	Headwaters to mouth	0.11	Brook Brown	6 18	4-6 1-8



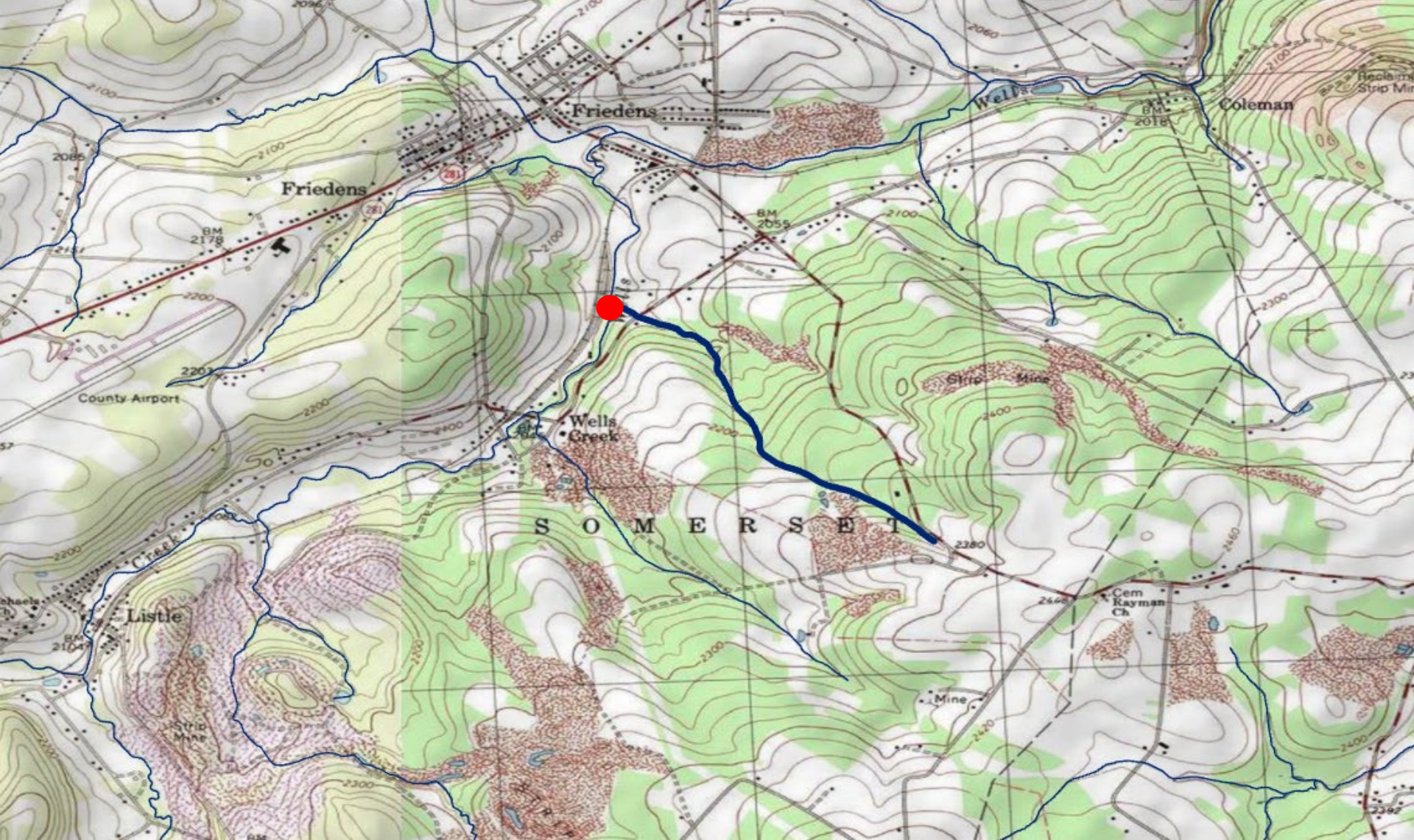
County of Mouth	Stream Name	Tributary To	Wild Trout Limits	Site River-mile ●	Species	Catch	Length (inches)
Somerset	UNT to Wells Creek (RM 2.96)	Wells Creek	Headwaters to mouth	0.00	Brown	3	3



County of Mouth	Stream Name	Tributary To	Wild Trout Limits	Site River-mile ●	Species	Catch	Length (inches)
Somerset	UNT to Wells Creek (RM 3.78)	Wells Creek	Headwaters to mouth	0.00	Brown	8	3-5



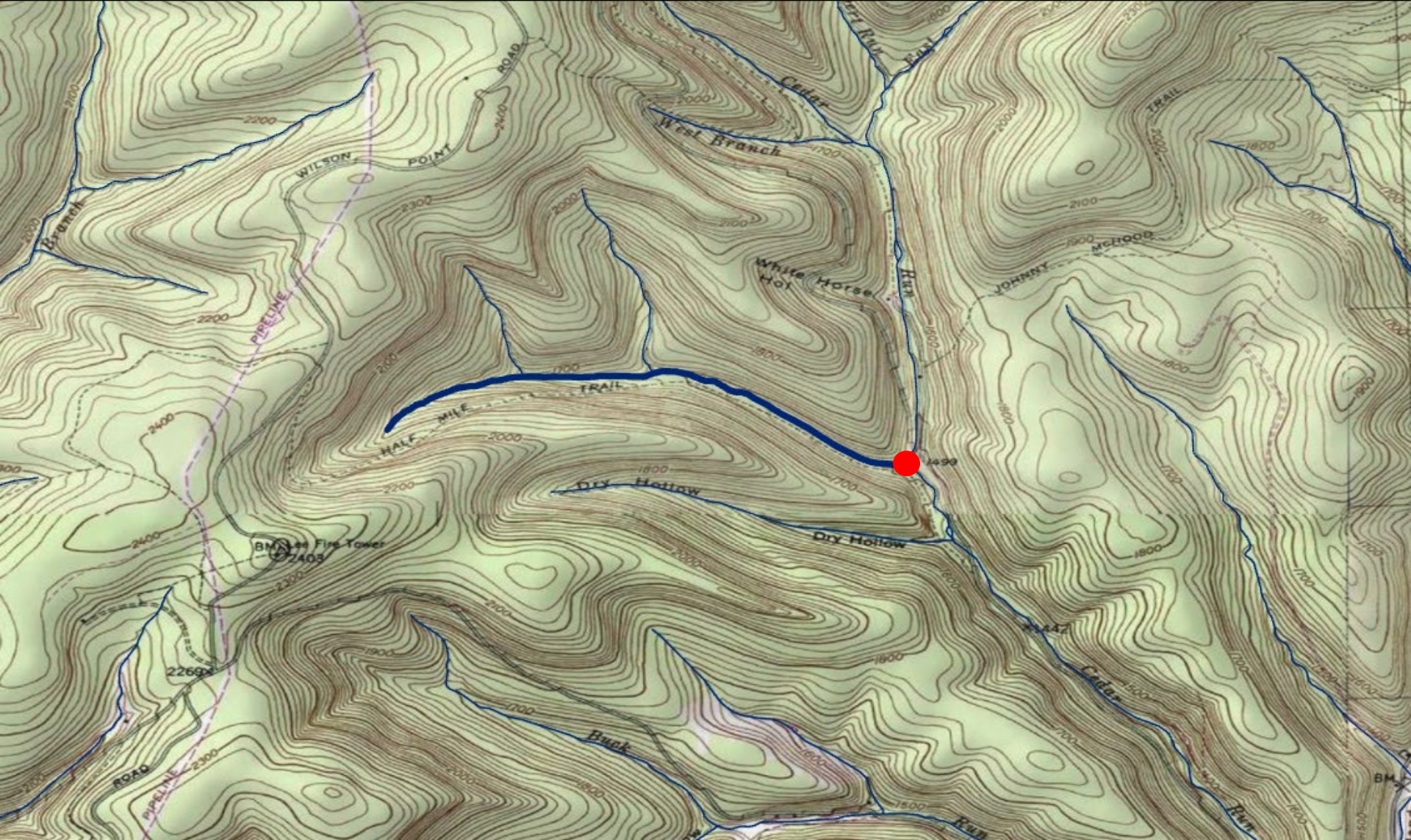
County of Mouth	Stream Name	Tributary To	Wild Trout Limits	Site River-mile ●	Species	Catch	Length (inches)
Somerset	UNT to Wells Creek (RM 4.48)	Wells Creek	Headwaters to mouth	0.00	Brown	5	2-8



County of Mouth	Stream Name	Tributary To	Wild Trout Limits	Site River-mile ●	Species	Catch	Length (inches)
Somerset	UNT to Wells Creek (RM 6.67)	Wells Creek	Headwaters to mouth	0.18	Brook Brown	5 3	4-9 3-11



County of Mouth	Stream Name	Tributary To	Wild Trout Limits	Site River-mile ●	Species	Catch	Length (inches)
Tioga	UNT to Cedar Run (RM 9.34)	Cedar Run	Headwaters to mouth	0.00	Brook Brown	93 12	2-8 1-8



County of Mouth	Stream Name	Tributary To	Wild Trout Limits	Site River-mile ●	Species	Catch	Length (inches)
Tioga	UNT to Slide Island Draft (RM 0.92)	Slide Island Draft	Headwaters to mouth	0.00	Brook Brown	196 14	2-8 3-8



County of Mouth	Stream Name	Tributary To	Wild Trout Limits	Site River-mile ●	Species	Catch	Length (inches)
Venango	UNT to Little Sandy Creek (RM 2.68)	Little Sandy Creek	Headwaters to mouth	0.00	Brook	10	2-7



County of Mouth	Stream Name	Tributary To	Wild Trout Limits	Site River-mile ●	Species	Catch	Length (inches)
Venango	UNT to Little Sandy Creek (RM 3.13)	Little Sandy Creek	Headwaters to mouth	0.01	Brook Brown	2 5	5 2-3



County of Mouth	Stream Name	Tributary To	Wild Trout Limits	Site River-mile ●	Species	Catch	Length (inches)
Venango	UNT to Little Sandy Creek (RM 5.11)	Little Sandy Creek	Headwaters to mouth	0.00	Brook Brown	17 1	2 2



County of Mouth	Stream Name	Tributary To	Wild Trout Limits	Site River-mile ●	Species	Catch	Length (inches)
Warren	UNT to Otter Branch (RM 0.97)	Otter Branch	Headwaters to mouth	0.00	Brook	15	2-5



County of Mouth	Stream Name	Tributary To	Wild Trout Limits	Site River-mile ●	Species	Catch	Length (inches)
Warren	UNT to West Branch Tionesta Creek (RM 21.59)	West Branch Tionesta Creek	Headwaters to mouth	0.02	Brook	13	2-4

