

Class A Additions

- Slides 2 - 61

Dry Gap Run, Blair County



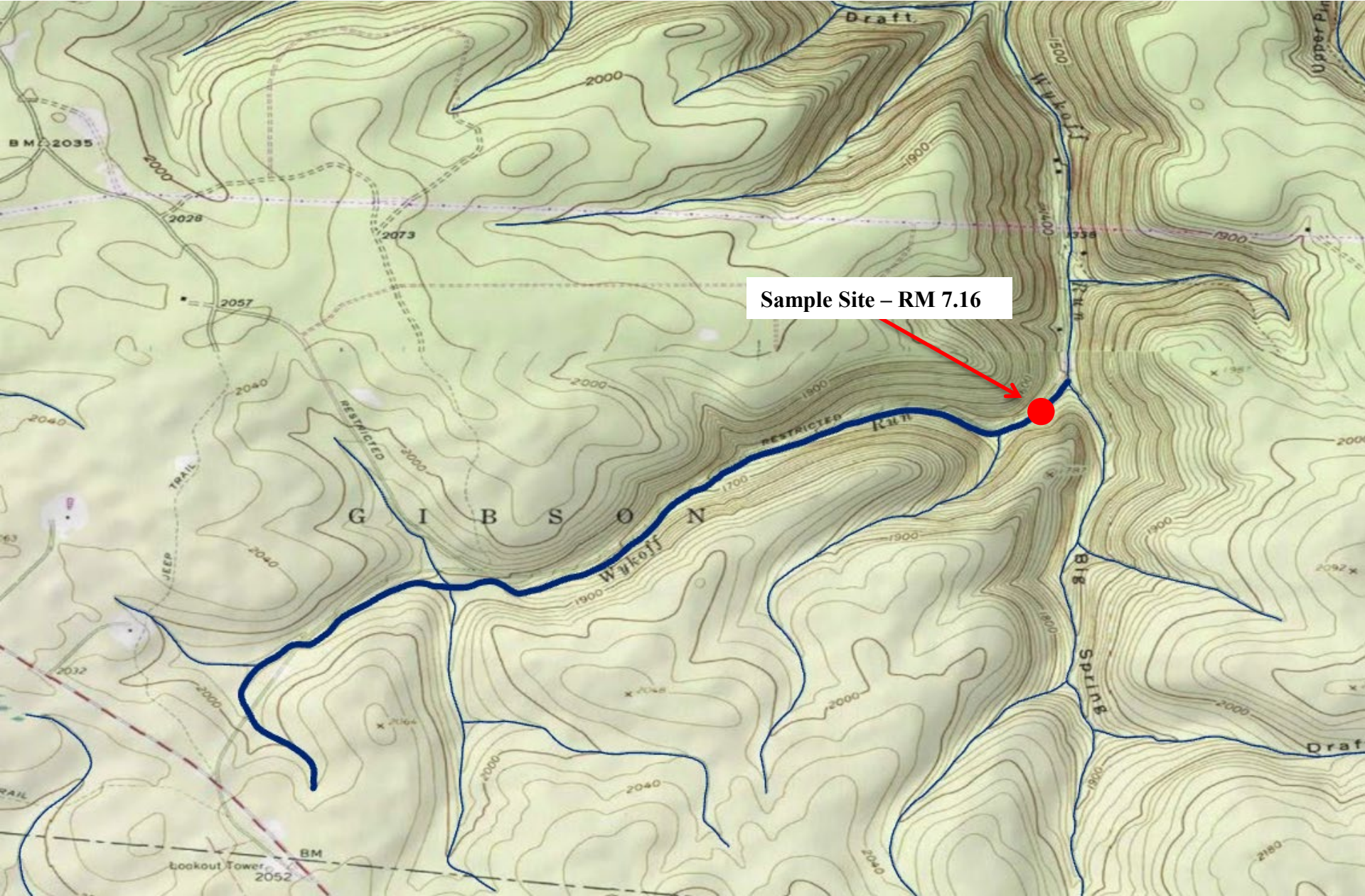
Sample Site - RM 0.05

Dry Gap Run, Blair County

Brook Trout RM – 0.05
Site Length – 280 meters

Length Group (inches)	Catch	Estimated Kg/Ha	Estimated Number/Km
1	2	0.03	7
2	30	0.97	107
3	1	0.08	4
4	11	1.96	39
5	38	12.09	136
6	27	14.45	96
7	4	3.33	14
Total	113	32.91	403

Wykoff Run, Cameron County



Wykoff Run, Cameron County

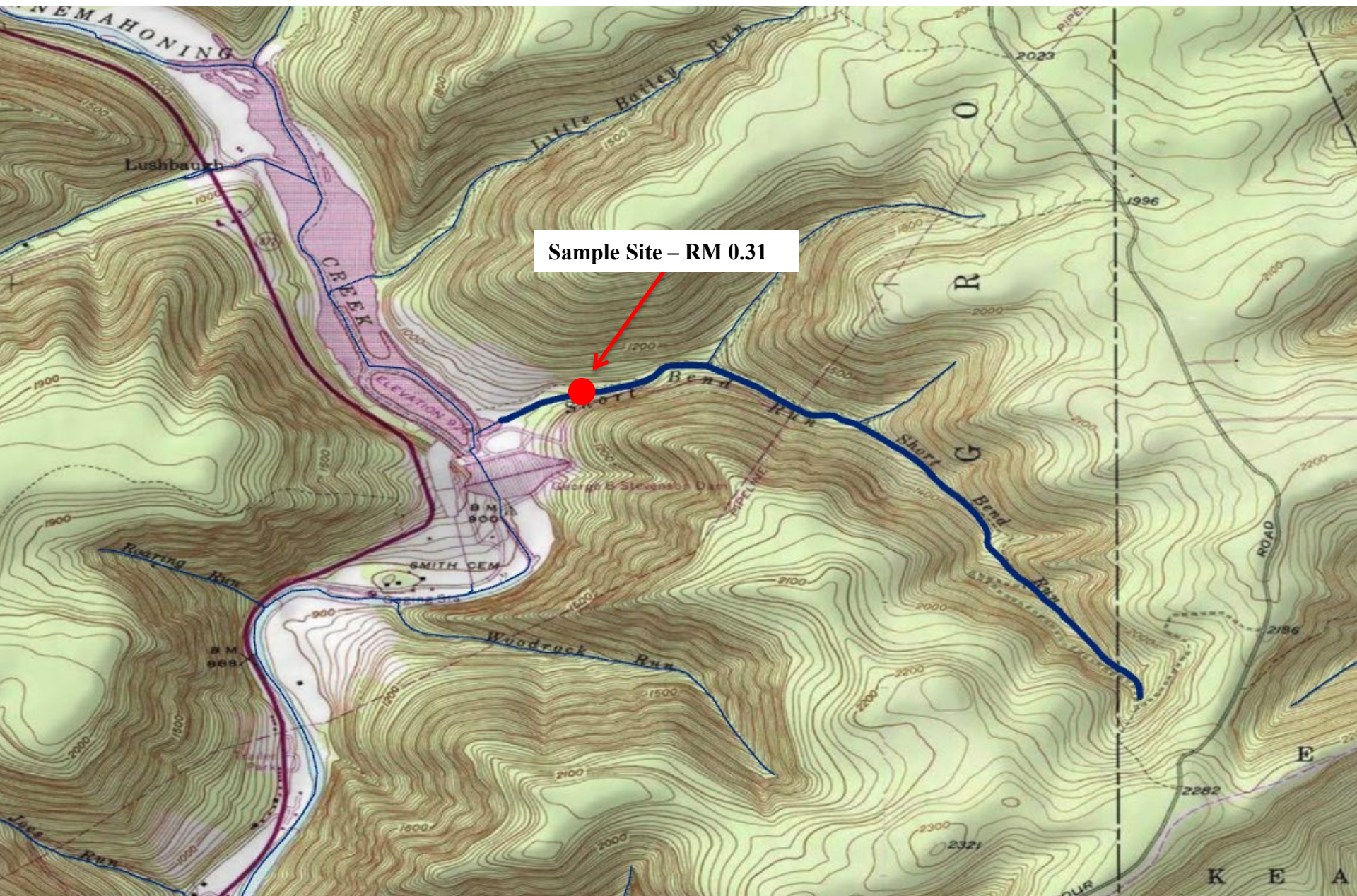
Brook Trout RM – 7.16
Site Length – 460 meters

Length Group (inches)	Catch	Estimated Kg/Ha	Estimated Number/Km
2	138	5.99	300
3	52	5.37	113
4	57	13.65	124
5	20	8.56	43
6	6	4.32	13
7	1	1.12	2
Total	274	39.01	595

Brown Trout RM – 7.16
Site Length – 460 meters

Length Group (inches)	Catch	Estimated Kg/Ha	Estimated Number/Km
5	2	0.92	4
Total	2	0.92	4

Short Bend Run, Cameron/Clinton Counties

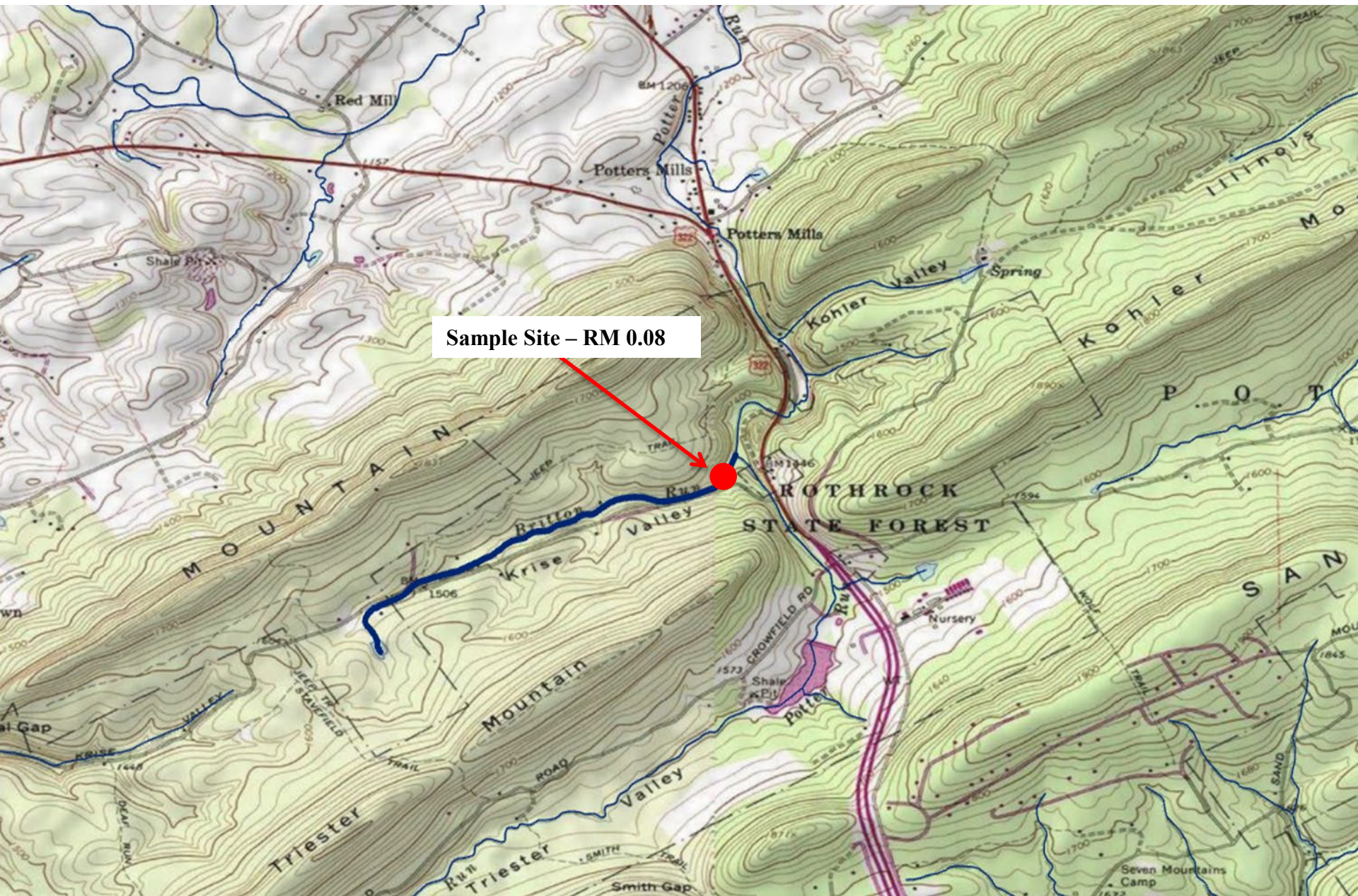


Short Bend Run, Cameron/Clinton Counties

Brook Trout RM – 0.31
Site Length – 360 meters

Length Group (inches)	Catch	Estimated Kg/Ha	Estimated Number/Km
2	117	4.56	325
3	17	1.58	47
4	26	5.60	72
5	18	6.93	50
6	11	7.12	31
7	8	8.06	22
8	4	5.84	11
Total	201	39.69	558

Britton Run, Centre County



Britton Run, Centre County

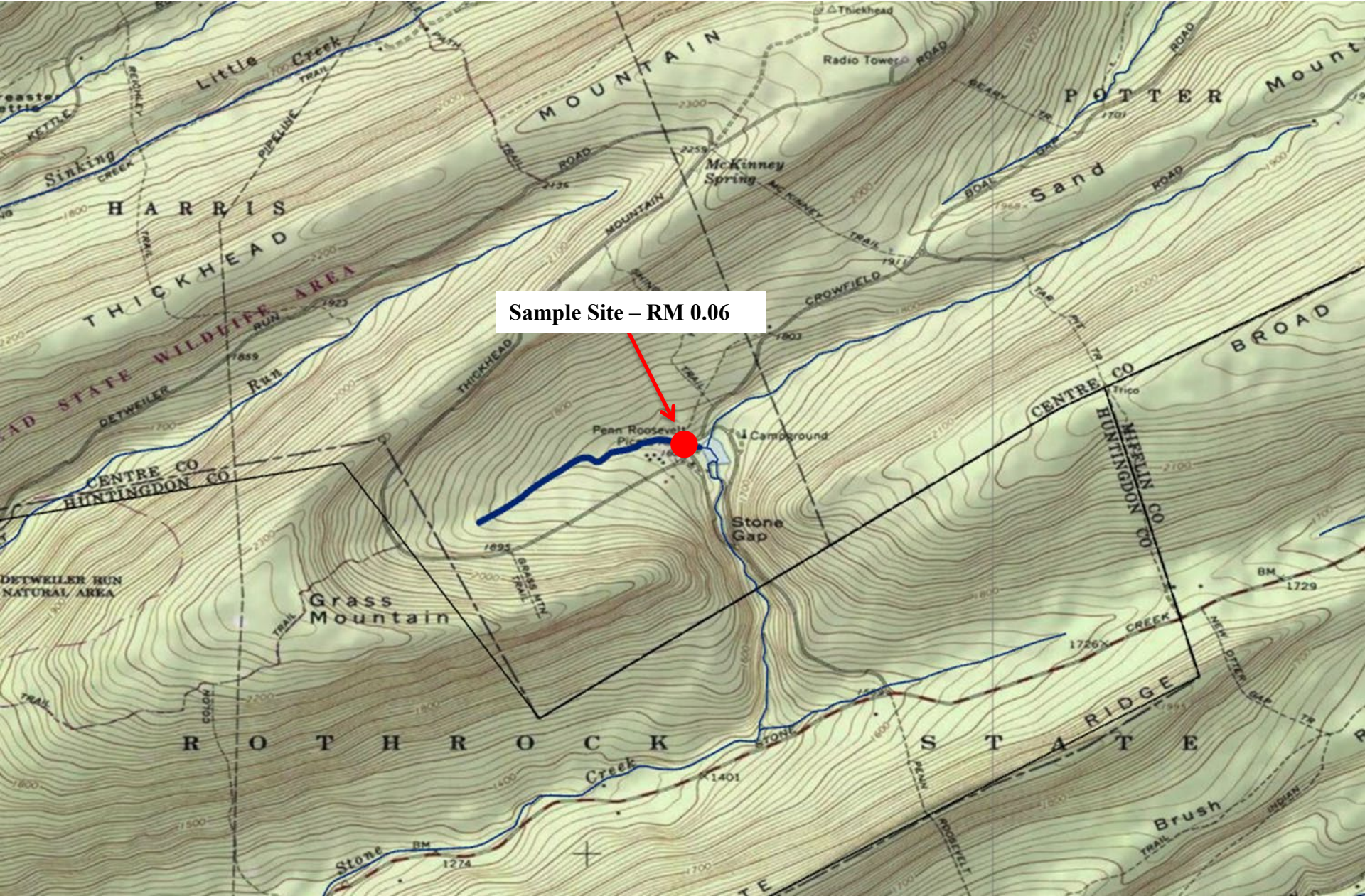
Brook Trout RM – 0.08
Site Length – 215 meters

Length Group (inches)	Catch	Estimated Kg/Ha	Estimated Number/Km
1	3	0.09	14
2	82	5.68	381
3	13	2.14	60
4	13	4.97	60
5	14	9.57	65
6	5	5.75	23
7	4	7.16	19
8	1	2.59	5
Total	135	37.95	627

Brown Trout RM – 0.08
Site Length – 215 meters

Length Group (inches)	Catch	Estimated Kg/Ha	Estimated Number/Km
2	2	0.14	9
4	2	0.80	9
5	4	2.94	19
6	1	1.23	5
Total	9	5.11	42

UNT to Standing Stone Creek (RM 34.29), Centre County



Sample Site – RM 0.06

UNT to Standing Stone Creek (RM 34.29), Centre County

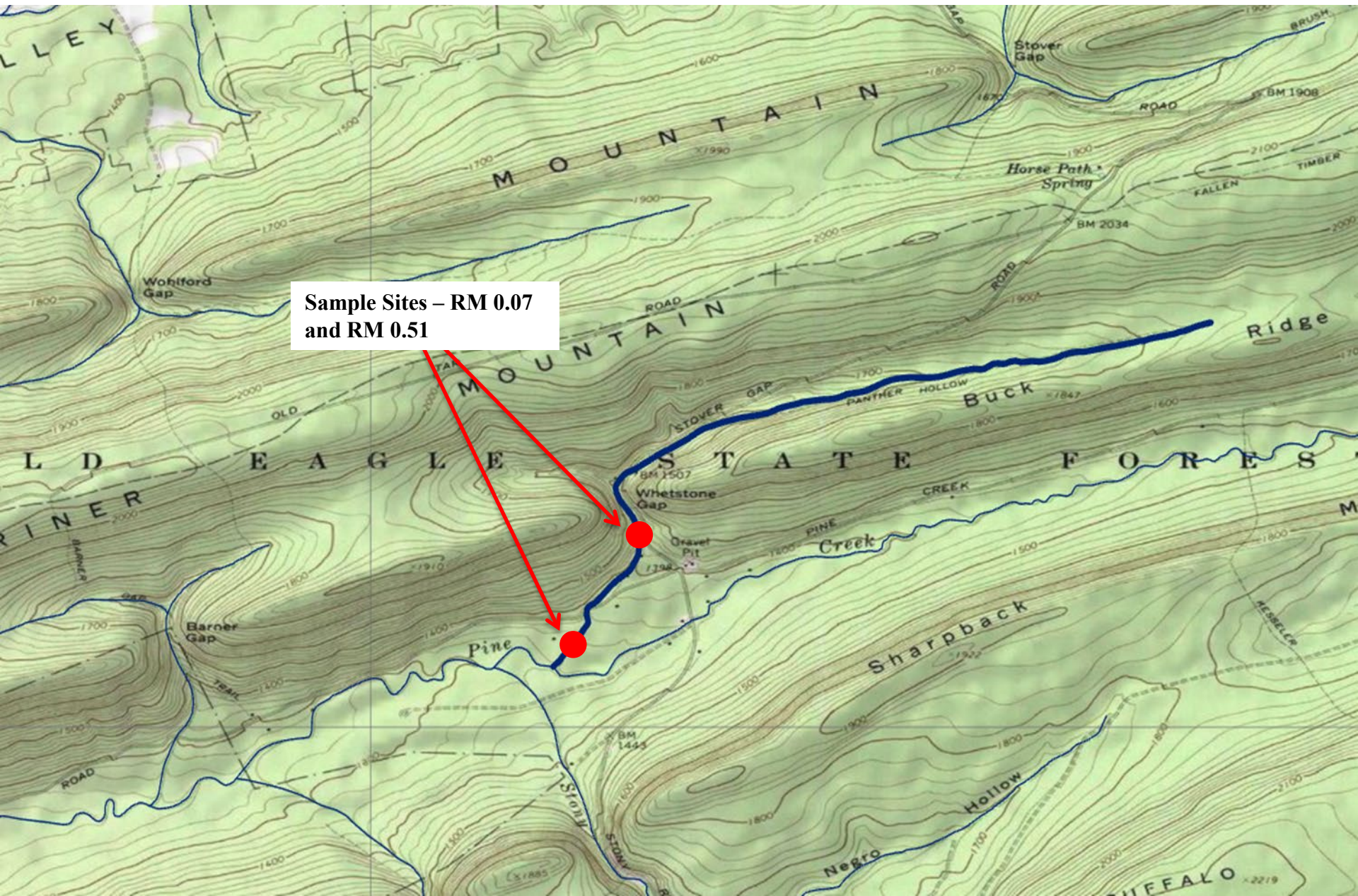
Brook Trout RM – 0.06
Site Length – 135 meters

Length Group (inches)	Catch	Estimated Kg/Ha	Estimated Number/Km
1	2	0.09	15
2	61	12.31	867
3	5	1.25	37
4	20	11.62	148
5	6	8.31	59
6	3	5.24	22
Total	97	38.82	1,148

Brown Trout RM – 0.06
Site Length – 135 meters

Length Group (inches)	Catch	Estimated Kg/Ha	Estimated Number/Km
8	1	4.13	7
Total	1	4.13	7

Whetstone Gap Run, Centre County



Sample Sites – RM 0.07
and RM 0.51

Whetstone Gap Run, Centre County

Brook Trout RM – 0.07
Site Length – 230 meters

Length Group (inches)	Catch	Estimated Kg/Ha	Estimated Number/Km
2	72	3.37	313
3	14	1.56	61
4	15	3.87	65
5	7	3.23	30
6	4	3.10	17
7	1	1.21	4
9	1	2.49	4
Total	114	18.33	494

Brown Trout RM – 0.07
Site Length – 230 meters

Length Group (inches)	Catch	Estimated Kg/Ha	Estimated Number/Km
1	1	0.02	4
2	2	0.10	9
3	1	0.12	4
4	2	0.54	9
5	1	0.50	4
6	3	2.49	13
7	4	5.08	17
8	1	1.84	4
9	1	2.55	4
13	1	7.22	4
Total	17	20.46	72

Whetstone Gap Run, Centre County

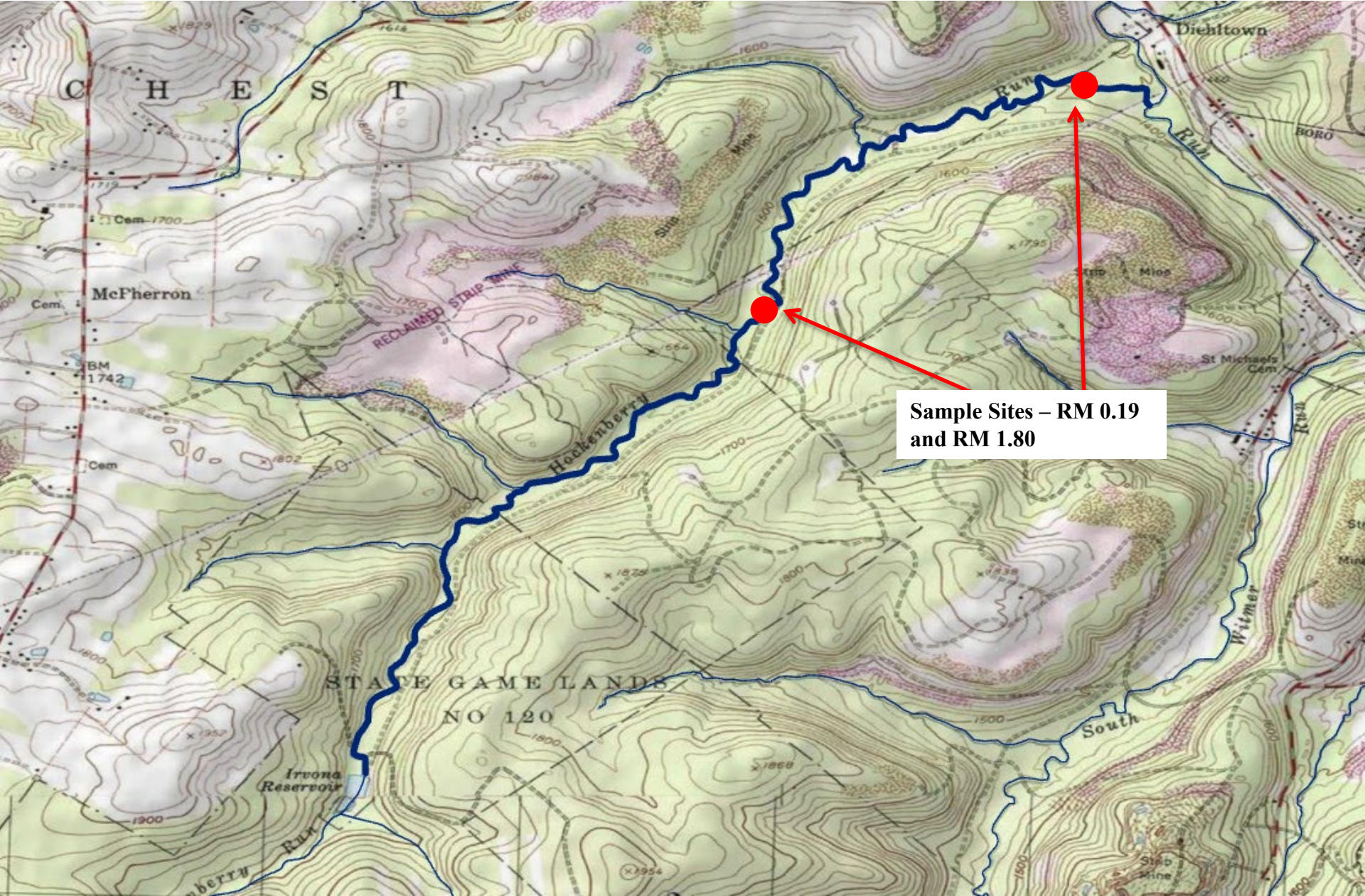
Brook Trout RM – 0.51
Site Length – 200 meters

Length Group (inches)	Catch	Estimated Kg/Ha	Estimated Number/Km
1	1	0.03	5
2	35	2.37	175
3	4	0.64	20
4	26	9.70	130
5	12	8.00	60
6	7	7.85	35
7	3	5.24	15
Total	88	33.83	440

Brown Trout RM – 0.51
Site Length – 200 meters

Length Group (inches)	Catch	Estimated Kg/Ha	Estimated Number/Km
7	1	1.83	5
9	1	3.69	5
12	1	8.29	5
16	1	19.02	5
Total	4	32.83	20

Hockenberry Run, Clearfield County



Sample Sites – RM 0.19
and RM 1.80

Hockenberry Run, Clearfield County

Brook Trout RM – 0.19
Site Length – 304 meters

Length Group (inches)	Catch	Estimated Kg/Ha	Estimated Number/Km
2	85	4.47	526
3	17	1.73	86
4	18	3.70	79
5	28	8.27	99
6	17	8.35	59
7	6	5.05	23
8	2	2.09	7
Total	173	33.66	879

Brown Trout RM – 0.19
Site Length – 304 meters

Length Group (inches)	Catch	Estimated Kg/Ha	Estimated Number/Km
2	1	0.03	3
4	1	0.16	3
Total	2	0.19	6

Hockenberry Run, Clearfield County

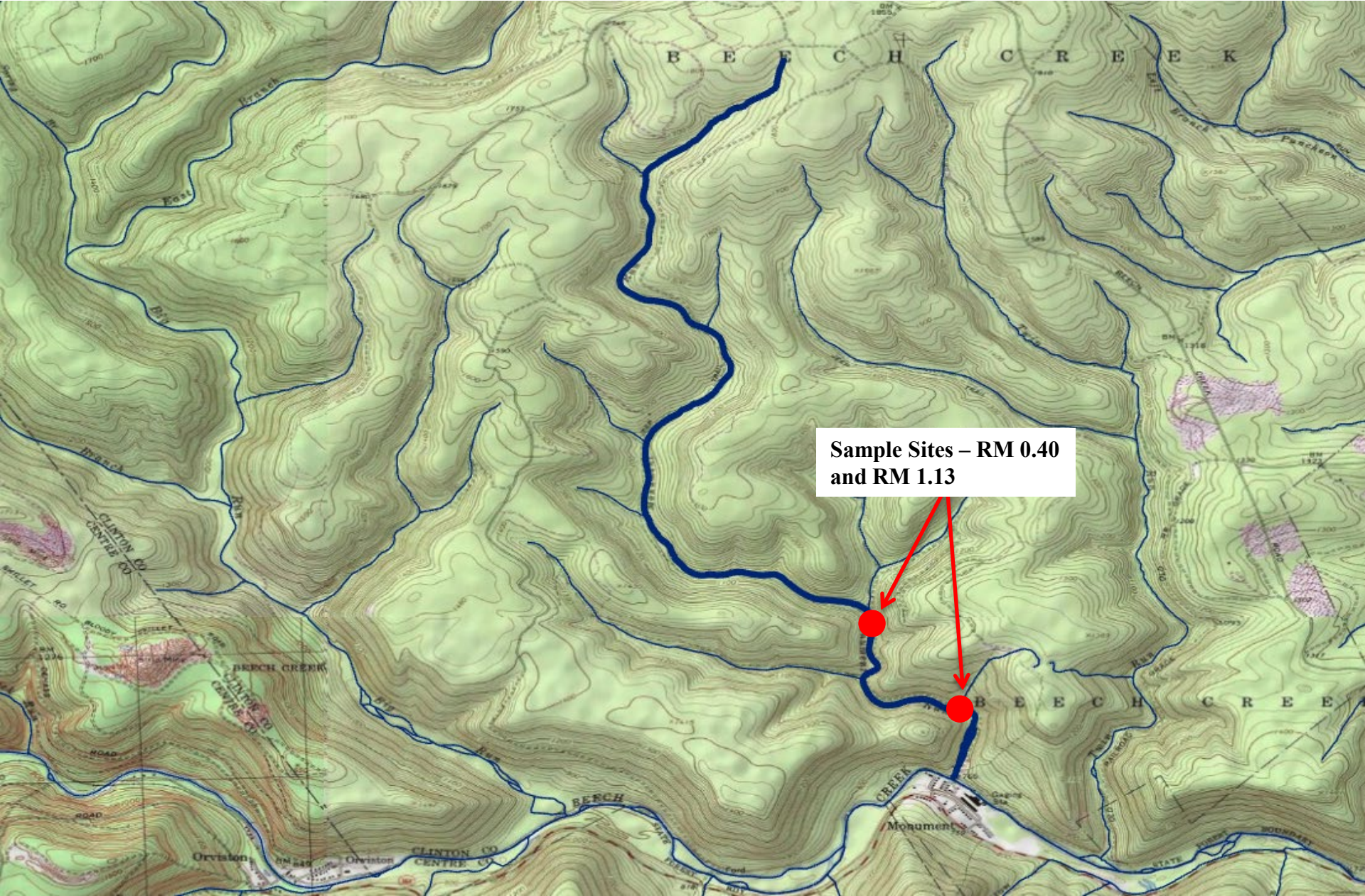
Brook Trout RM – 1.80
Site Length – 360 meters

Length Group (inches)	Catch	Estimated Kg/Ha	Estimated Number/Km
2	90	3.19	250
3	7	0.59	19
4	14	2.74	39
5	21	7.34	58
6	22	12.94	61
7	8	7.32	22
8	4	5.30	11
9	1	1.89	3
Total	167	41.31	463

Brown Trout RM – 1.80
Site Length – 360 meters

Length Group (inches)	Catch	Estimated Kg/Ha	Estimated Number/Km
3	1	0.09	3
4	1	0.21	3
Total	2	0.30	6

Monument Run, Clinton County



Monument Run, Clinton County

Brook Trout RM – 0.40
Site Length – 425 meters

Length Group (inches)	Catch	Estimated Kg/Ha	Estimated Number/Km
2	76	2.63	325
3	39	2.82	146
4	18	2.42	54
5	13	2.64	33
6	7	2.22	16
7	6	3.45	16
8	4	3.57	12
Total	163	19.75	602

Brown Trout RM – 0.40
Site Length – 425 meters

Length Group (inches)	Catch	Estimated Kg/Ha	Estimated Number/Km
12	1	2.34	2
Total	1	2.34	2

Monument Run, Clinton County

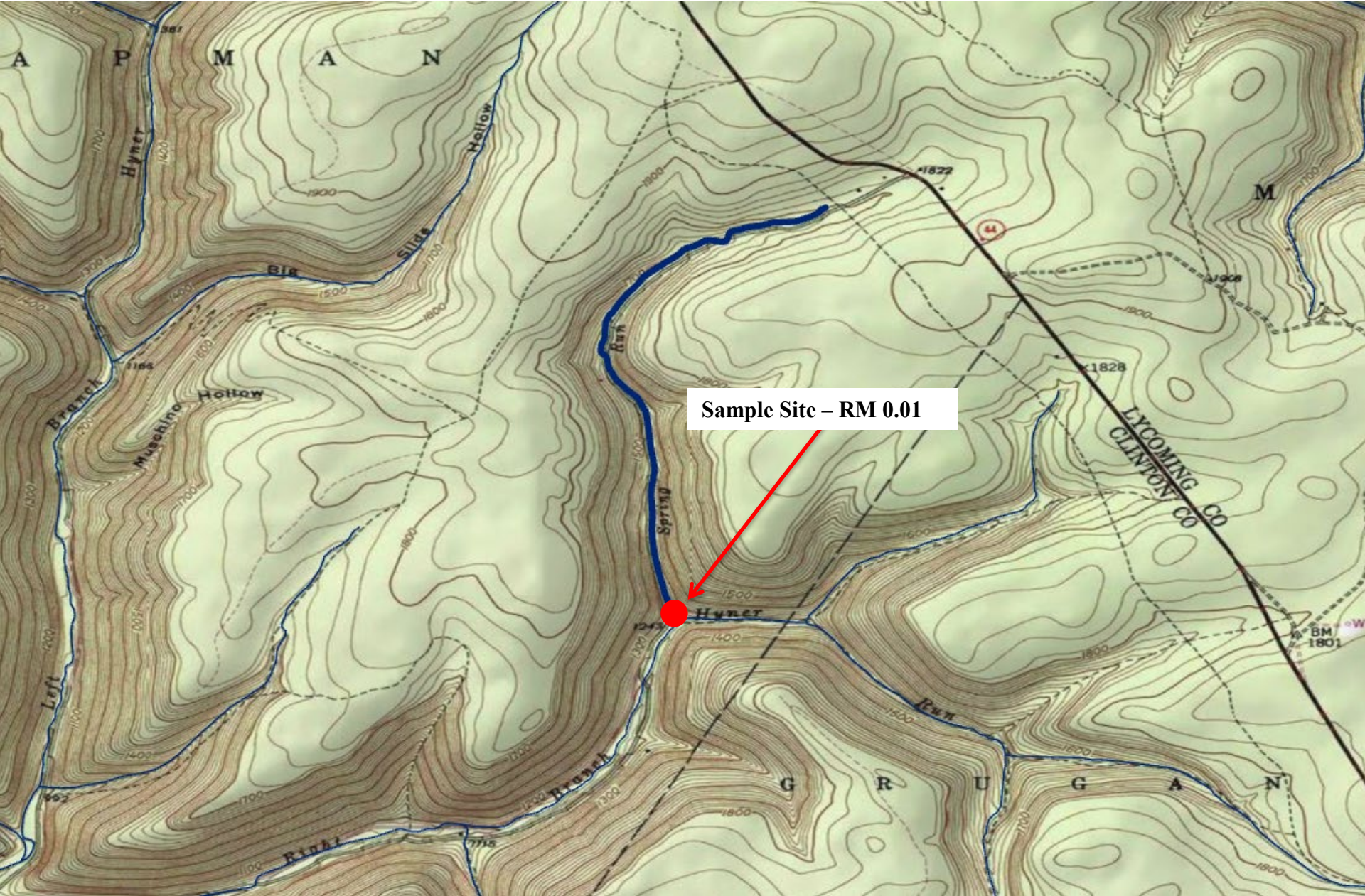
Brook Trout RM – 1.13
Site Length – 425 meters

Length Group (inches)	Catch	Estimated Kg/Ha	Estimated Number/Km
2	68	6.22	405
3	45	7.31	200
4	28	7.38	87
5	28	11.77	78
6	10	6.60	26
7	8	7.47	19
8	4	6.76	12
9	1	1.92	2
Total	192	55.43	829

Brown Trout RM – 1.13
Site Length – 425 meters

Length Group (inches)	Catch	Estimated Kg/Ha	Estimated Number/Km
6	2	1.28	5
13	1	5.59	2
Total	3	6.87	7

Spring Run, Clinton County



Sample Site - RM 0.01

Spring Run, Clinton County

Brook Trout RM – 0.01
Site Length – 285 meters

Length Group (inches)	Catch	Estimated Kg/Ha	Estimated Number/Km
1	36	0.76	126
2	6	0.29	21
3	4	0.47	14
4	22	6.77	88
5	20	16.46	119
6	12	11.40	49
7	3	3.80	11
Total	103	39.95	428

UNT to Monument Run (RM 0.86), Clinton County



UNT to Monument Run (RM 0.86), Clinton County

Brook Trout RM – 0.02
Site Length – 265 meters

Length Group (inches)	Catch	Estimated Kg/Ha	Estimated Number/Km
2	57	5.78	294
3	17	3.35	72
4	7	3.68	34
5	11	8.04	42
6	4	6.15	19
7	3	5.74	11
Total	99	32.74	472

UNT to Monument Run (RM 1.24), Clinton County

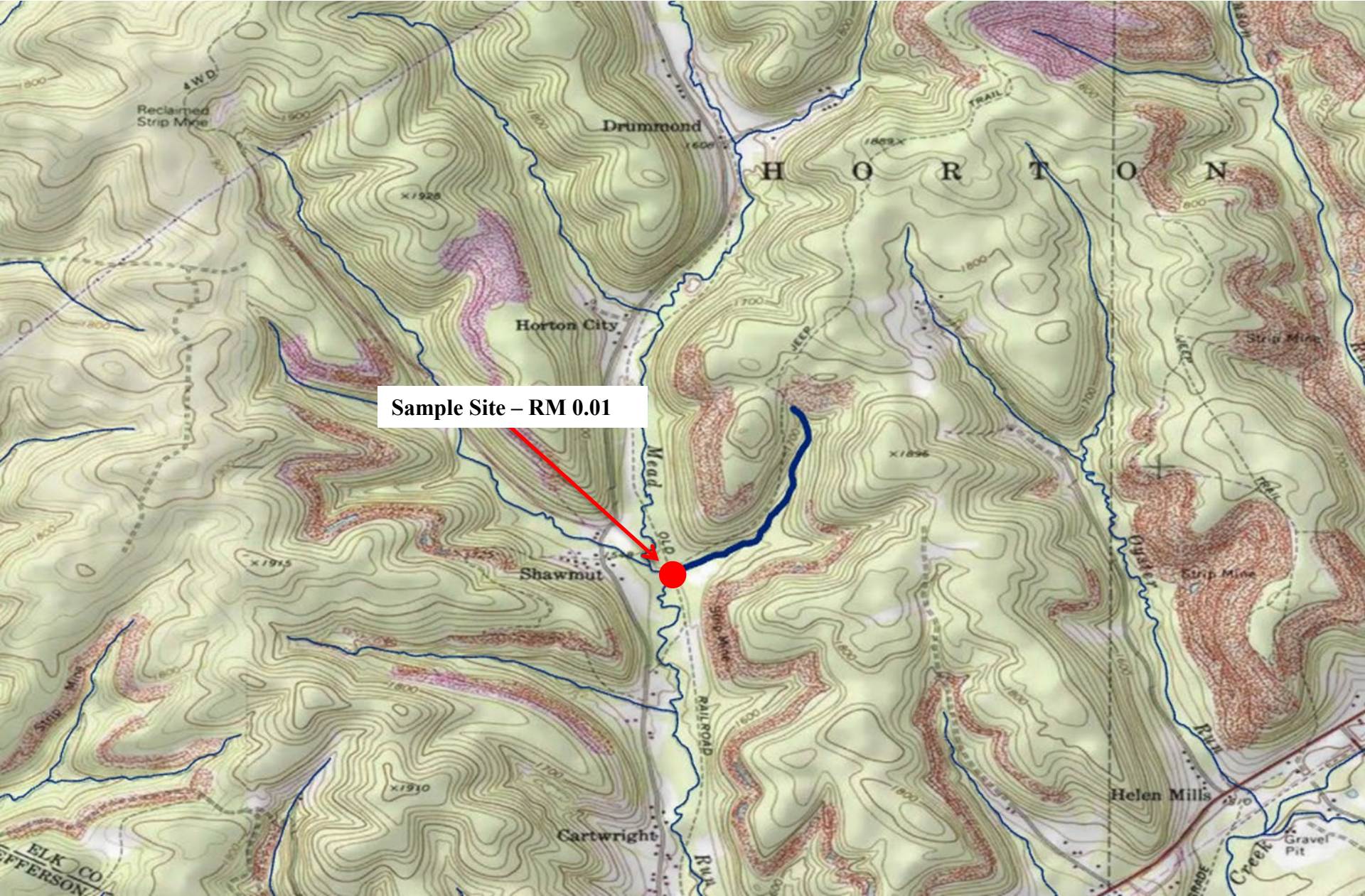


UNT to Monument Run (RM 1.24), Clinton County

Brook Trout RM – 0.00
Site Length – 155 meters

Length Group (inches)	Catch	Estimated Kg/Ha	Estimated Number/Km
2	30	4.85	194
3	4	1.54	26
4	13	11.60	84
5	15	23.92	97
6	12	32.20	77
Total	74	74.11	478

UNT to Mead Run (RM 2.52), Elk County

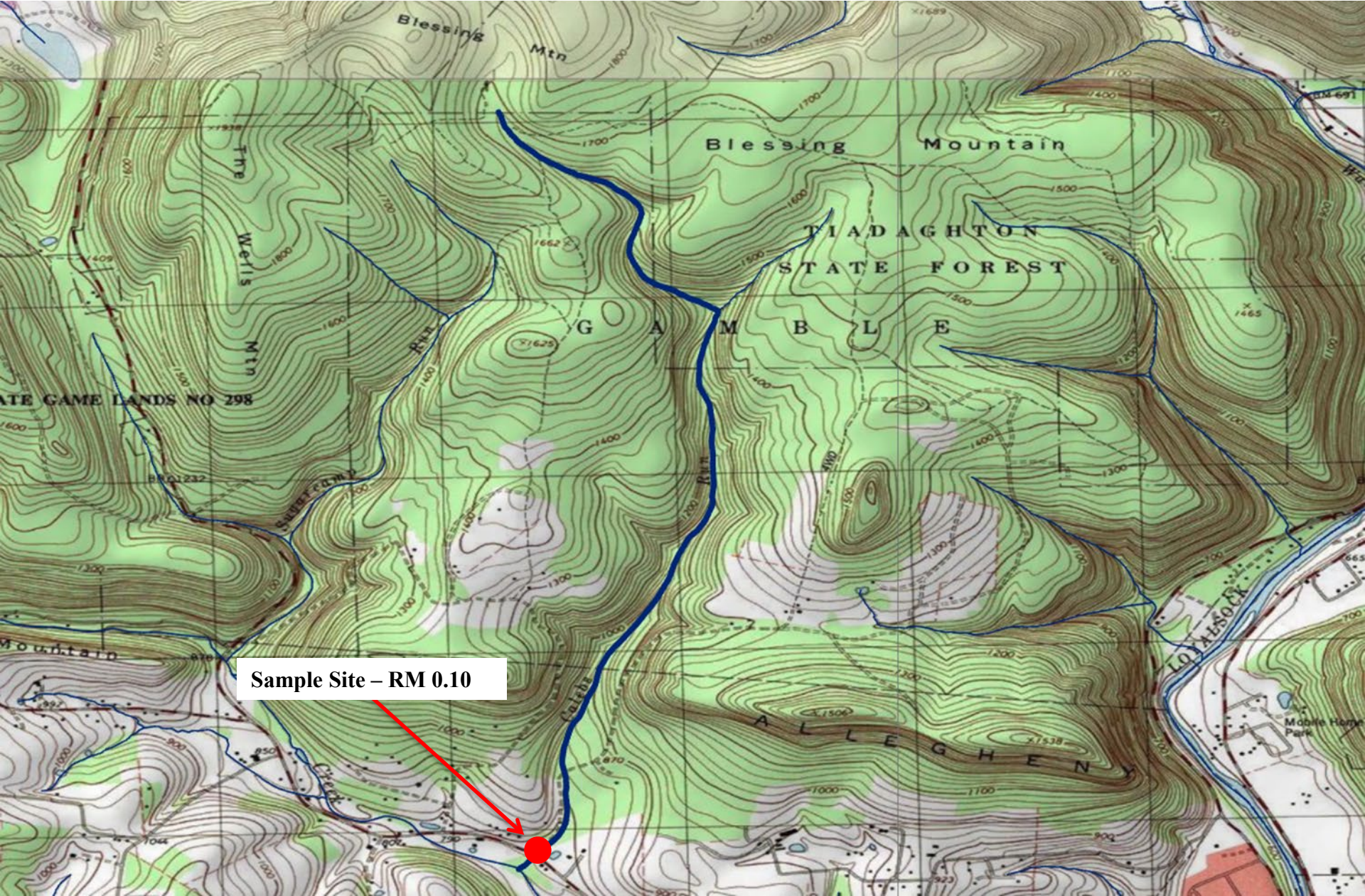


UNT to Mead Run (RM 2.52), Elk County

Brook Trout RM – 0.01
Site Length – 113 meters

Length Group (inches)	Catch	Estimated Kg/Ha	Estimated Number/Km
2	8	1.49	71
3	12	5.31	106
5	3	5.50	27
6	3	9.26	27
7	1	4.80	9
8	2	13.92	18
Total	29	40.28	258

Calebs Run, Lycoming County



Sample Site – RM 0.10

Calebs Run, Lycoming County

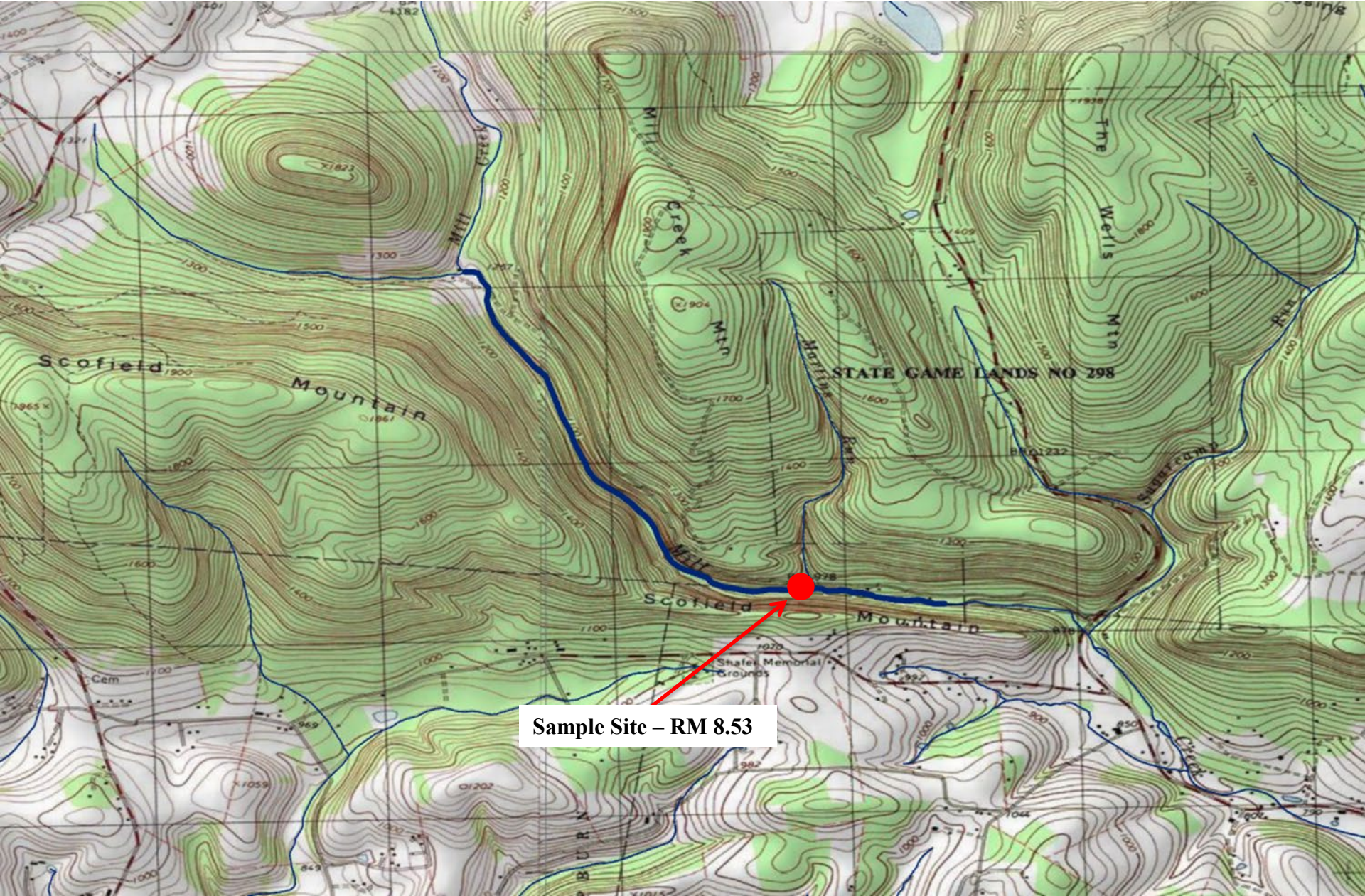
Brook Trout RM – 0.10
Site Length – 510 meters

Length Group (inches)	Catch	Estimated Kg/Ha	Estimated Number/Km
1	46	0.31	90
2	97	5.51	688
3	3	0.11	6
4	75	9.70	220
5	42	8.67	110
6	14	4.43	33
7	2	0.81	4
8	5	2.94	10
9	1	0.84	2
Total	285	33.32	1,163

Brown Trout RM – 0.10
Site Length – 510 meters

Length Group (inches)	Catch	Estimated Kg/Ha	Estimated Number/Km
4	6	0.55	12
5	11	2.16	25
6	2	0.56	4
7	2	0.85	4
8	2	1.23	4
9	2	1.71	4
10	3	3.47	6
12	1	1.93	2
13	1	2.42	2
Total	30	14.88	63

Mill Creek (Warrensville), Lycoming County



Sample Site - RM 8.53

Mill Creek (Warrensville), Lycoming County

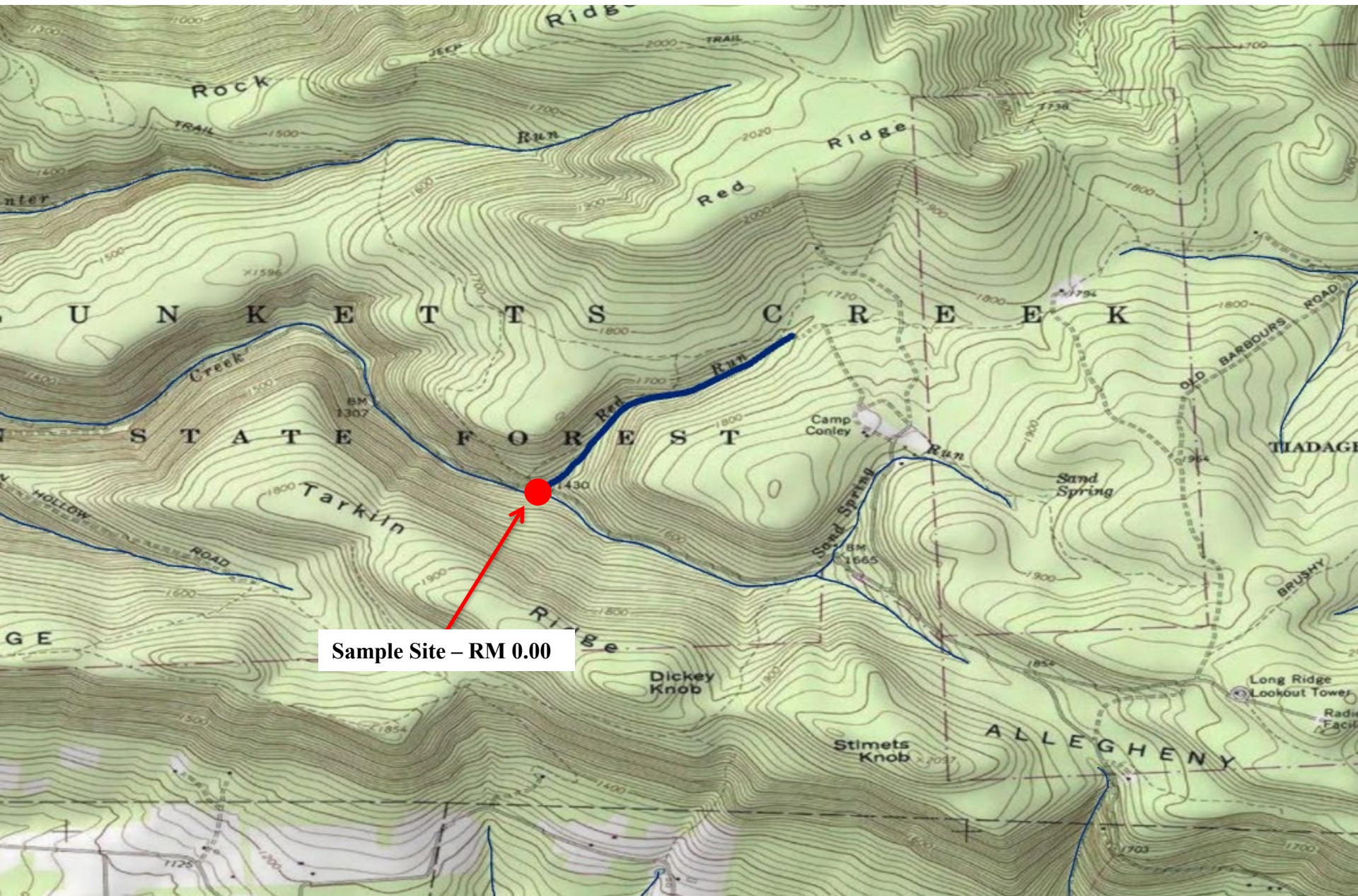
Brook Trout RM – 8.53
Site Length – 400 meters

Length Group (inches)	Catch	Estimated Kg/Ha	Estimated Number/Km
4	1	0.06	3
5	1	0.11	3
7	1	0.30	3
8	1	0.43	3
9	1	0.61	3
Total	5	1.51	15

Brown Trout RM – 8.53
Site Length – 400 meters

Length Group (inches)	Catch	Estimated Kg/Ha	Estimated Number/Km
1	5	0.02	13
2	14	0.17	35
4	9	0.60	23
5	63	12.03	248
6	19	3.86	48
7	16	6.84	55
8	15	8.54	48
9	6	5.00	20
10	12	10.97	33
11	4	5.48	13
12	2	2.81	5
13	4	7.08	10
15	1	2.67	3
Total	170	66.07	554

Red Run, Lycoming County



Sample Site - RM 0.00

Red Run, Lycoming County

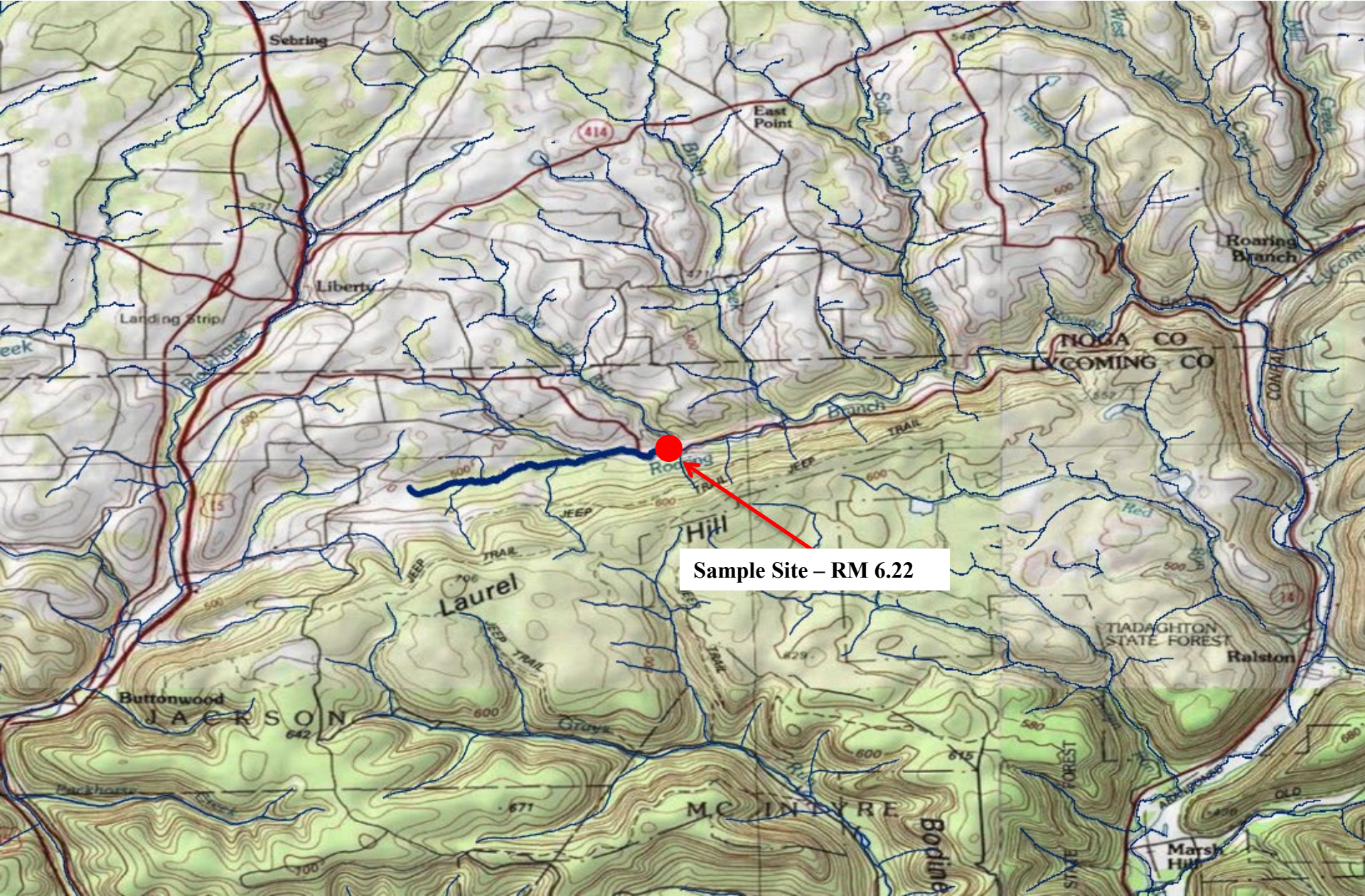
Brook Trout RM – 0.00
Site Length – 145 meters

Length Group (inches)	Catch	Estimated Kg/Ha	Estimated Number/Km
1	1	0.05	7
2	30	3.66	207
3	2	0.58	14
4	16	10.76	110
5	8	9.62	55
6	5	10.11	34
7	1	3.15	7
Total	63	37.93	434

Brown Trout RM – 0.00
Site Length – 145 meters

Length Group (inches)	Catch	Estimated Kg/Ha	Estimated Number/Km
4	1	0.71	7
6	1	2.16	7
Total	2	2.87	14

Roaring Branch, Lycoming County



Roaring Branch, Lycoming County

Brook Trout RM – 6.22
Site Length – 400 meters

Length Group (inches)	Catch	Estimated Kg/Ha	Estimated Number/Km
2	2	0.06	5
5	1	0.27	3
7	1	0.72	3
Total	4	1.05	11

Brown Trout RM – 6.22
Site Length – 400 meters

Length Group (inches)	Catch	Estimated Kg/Ha	Estimated Number/Km
1	4	0.05	10
2	78	2.24	195
3	1	0.07	3
4	7	1.13	18
5	28	8.28	70
6	9	4.44	23
7	13	9.83	33
8	11	12.03	28
9	11	16.74	28
10	7	14.37	18
11	2	5.34	5
12	2	6.84	5
14	2	10.65	5
Total	175	92.01	441

Sand Spring Run, Lycoming County

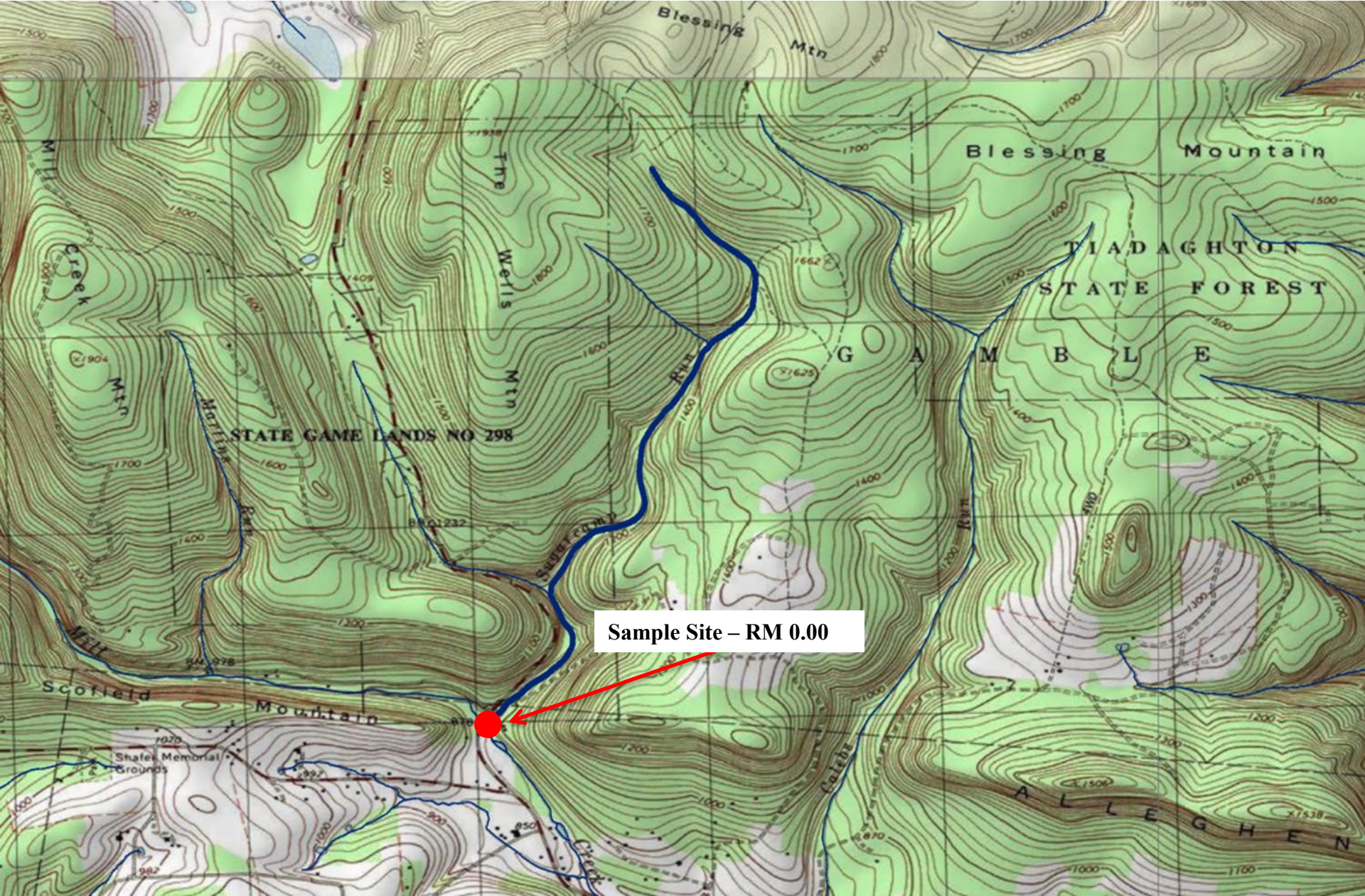


Sand Spring Run, Lycoming County

Brook Trout RM – 0.09
Site Length – 130 meters

Length Group (inches)	Catch	Estimated Kg/Ha	Estimated Number/Km
1	8	0.64	62
2	10	1.86	77
3	10	4.42	77
4	11	11.29	85
5	11	20.18	85
6	1	3.09	8
Total	51	41.48	394

Sugarcamp Run, Lycoming County



Sample Site - RM 0.00

Sugarcamp Run, Lycoming County

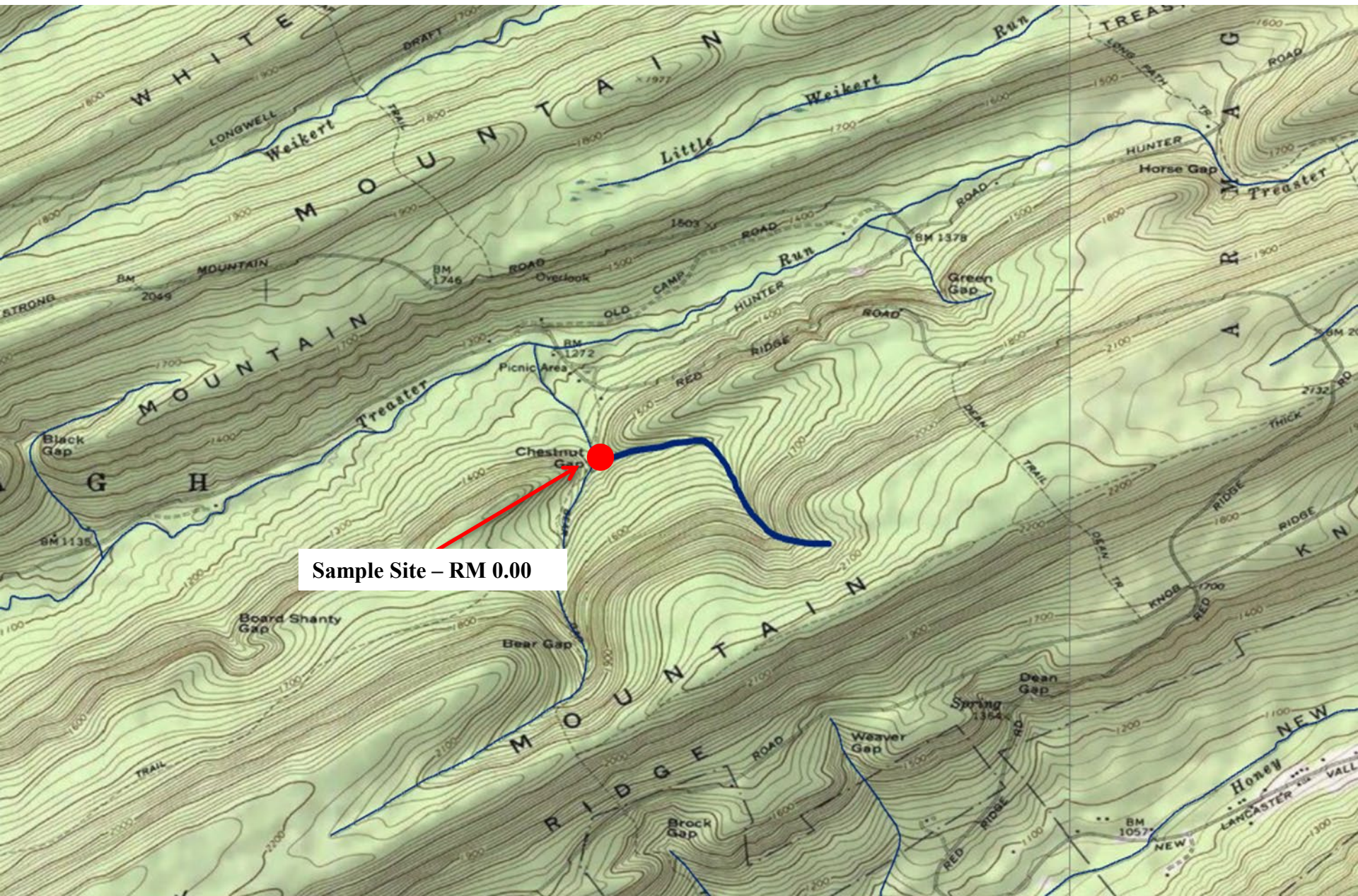
Brook Trout RM – 0.00
Site Length – 360 meters

Length Group (inches)	Catch	Estimated Kg/Ha	Estimated Number/Km
1	49	0.46	136
2	101	8.17	1,044
3	11	0.57	31
4	37	6.00	139
5	24	10.94	142
6	6	2.16	17
7	7	3.93	19
8	1	0.81	3
Total	236	33.04	1,531

Brown Trout RM – 0.00
Site Length – 360 meters

Length Group (inches)	Catch	Estimated Kg/Ha	Estimated Number/Km
1	12	0.11	33
3	5	0.33	17
4	24	4.66	103
5	5	1.15	14
6	1	0.39	3
7	1	0.59	3
8	1	0.85	3
9	3	3.56	8
10	1	1.60	3
11	1	2.08	3
13	1	3.36	3
Total	55	18.68	193

Chestnut Gap Run, Mifflin County



Sample Site – RM 0.00

Chestnut Gap Run, Mifflin County

Brook Trout RM – 0.00
Site Length – 135 meters

Length Group (inches)	Catch	Estimated Kg/Ha	Estimated Number/Km
2	29	3.32	215
3	7	1.91	52
4	22	13.90	163
5	11	12.43	81
6	2	3.80	15
7	1	2.96	7
Total	72	38.32	533

Brown Trout RM – 0.00
Site Length – 135 meters

Length Group (inches)	Catch	Estimated Kg/Ha	Estimated Number/Km
7	1	3.11	7
Total	1	3.11	7

Indian Run, Monroe County

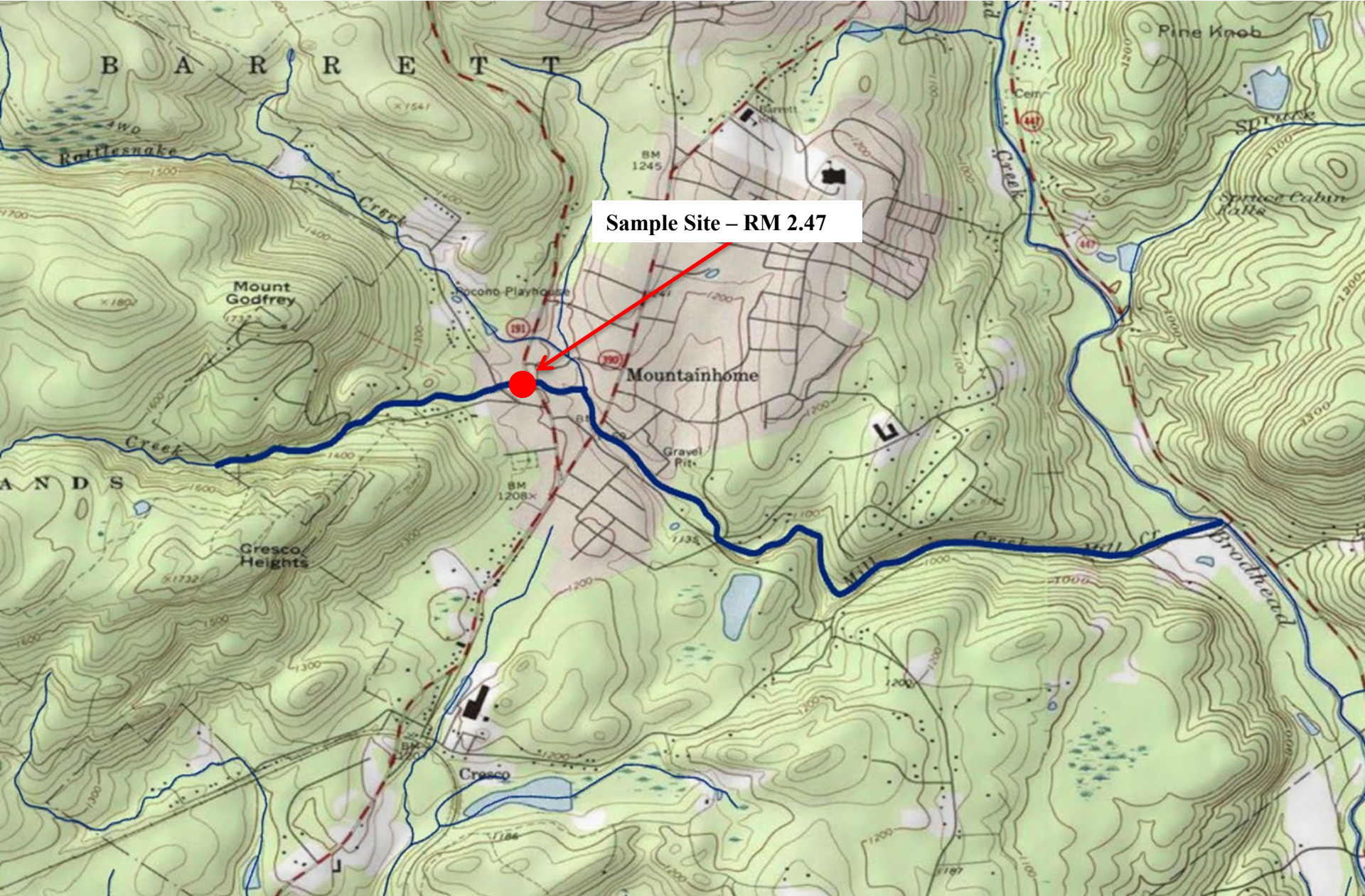
Brook Trout RM – 0.62
Site Length – 365 meters

Length Group (inches)	Catch	Estimated Kg/Ha	Estimated Number/Km
2	1	0.02	3
3	11	0.63	30
4	10	1.33	27
5	2	0.47	5
6	2	0.80	5
7	1	0.62	3
9	1	1.28	3
Total	28	5.15	76

Brown Trout RM – 0.62
Site Length – 365 meters

Length Group (inches)	Catch	Estimated Kg/Ha	Estimated Number/Km
2	14	0.35	38
3	38	2.34	104
4	1	0.14	3
5	10	2.55	27
6	23	9.80	63
7	26	16.97	71
8	9	8.49	25
9	12	15.76	33
11	1	2.30	3
Total	134	58.70	367

Mill Creek, Monroe County



Mill Creek, Monroe County

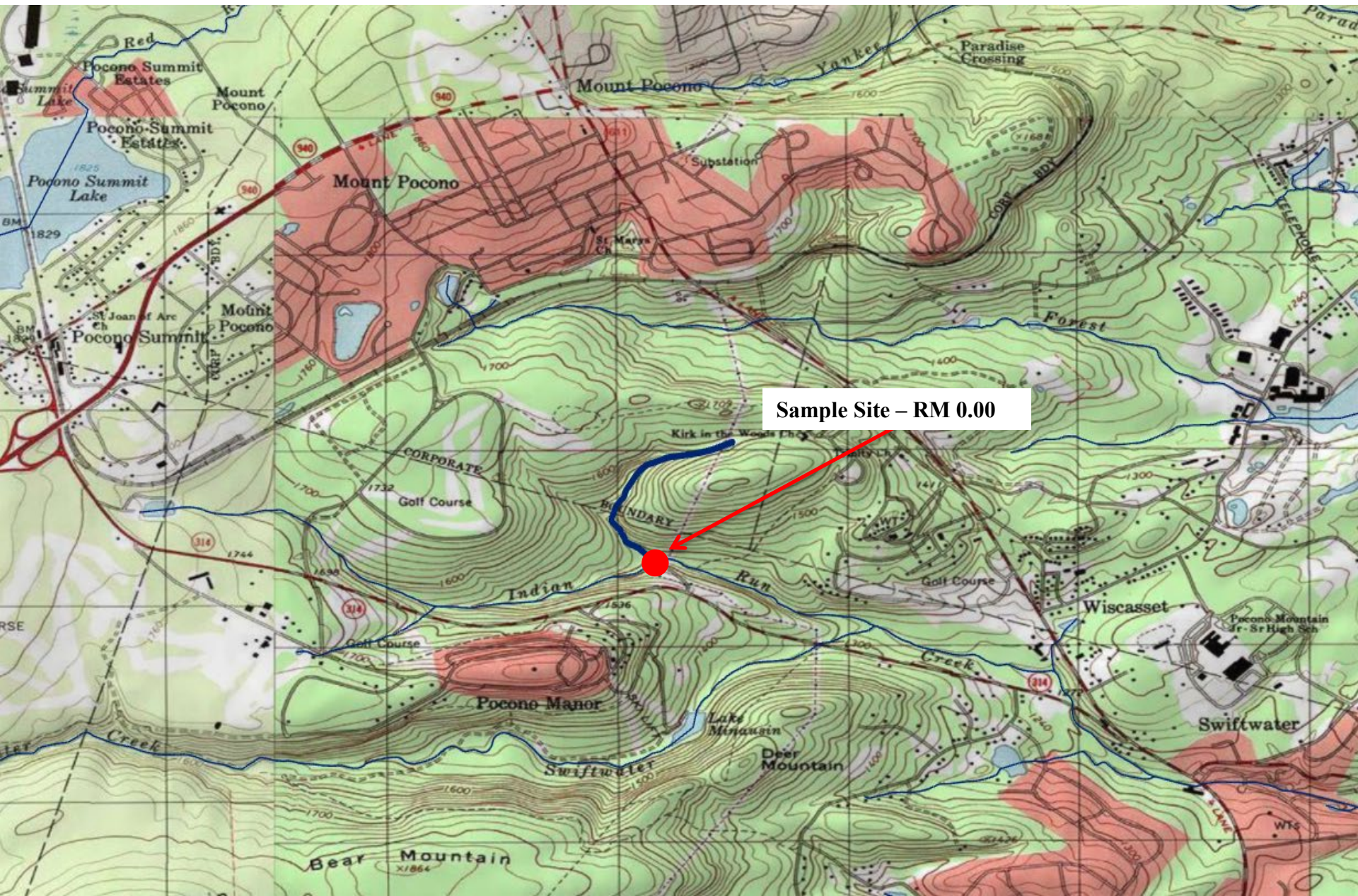
Brook Trout RM – 2.47
Site Length – 550 meters

Length Group (inches)	Catch	Estimated Kg/Ha	Estimated Number/Km
2	48	0.86	87
3	74	3.15	135
4	1	0.10	2
5	8	1.41	15
6	4	1.19	7
7	2	0.93	4
8	1	0.67	2
Total	138	8.31	252

Brown Trout RM – 2.47
Site Length – 550 meters

Length Group (inches)	Catch	Estimated Kg/Ha	Estimated Number/Km
2	76	1.40	138
3	22	1.01	40
4	19	1.97	35
5	97	18.44	176
6	50	15.87	91
7	31	15.08	56
8	31	21.79	56
9	11	10.76	20
10	3	3.96	5
11	3	5.15	5
12	1	2.20	2
13	1	2.77	2
16	1	5.04	2
Total	346	105.44	628

UNT to Indian Run (RM 0.64), Monroe County



UNT to Indian Run (RM 0.64), Monroe County

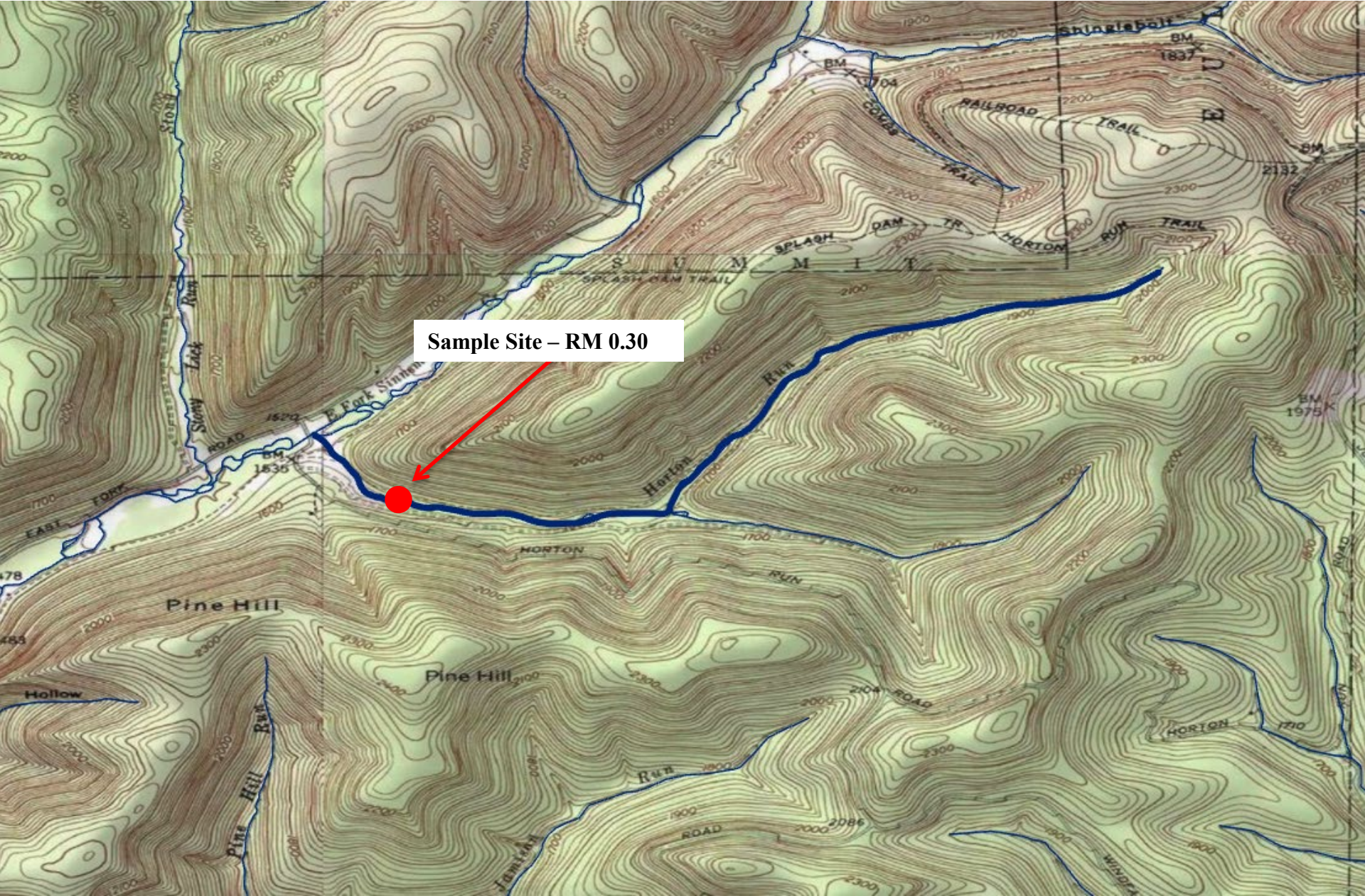
Brook Trout RM – 0.00
Site Length – 105 meters

Length Group (inches)	Catch	Estimated Kg/Ha	Estimated Number/Km
2	11	1.92	105
3	9	3.73	86
4	1	0.96	10
5	2	3.44	19
6	2	5.78	19
Total	25	15.83	239

Brown Trout RM – 0.00
Site Length – 105 meters

Length Group (inches)	Catch	Estimated Kg/Ha	Estimated Number/Km
2	6	1.08	57
4	4	4.04	38
5	3	5.55	29
6	6	18.52	57
7	3	14.19	29
Total	22	43.38	210

Horton Run, Potter County



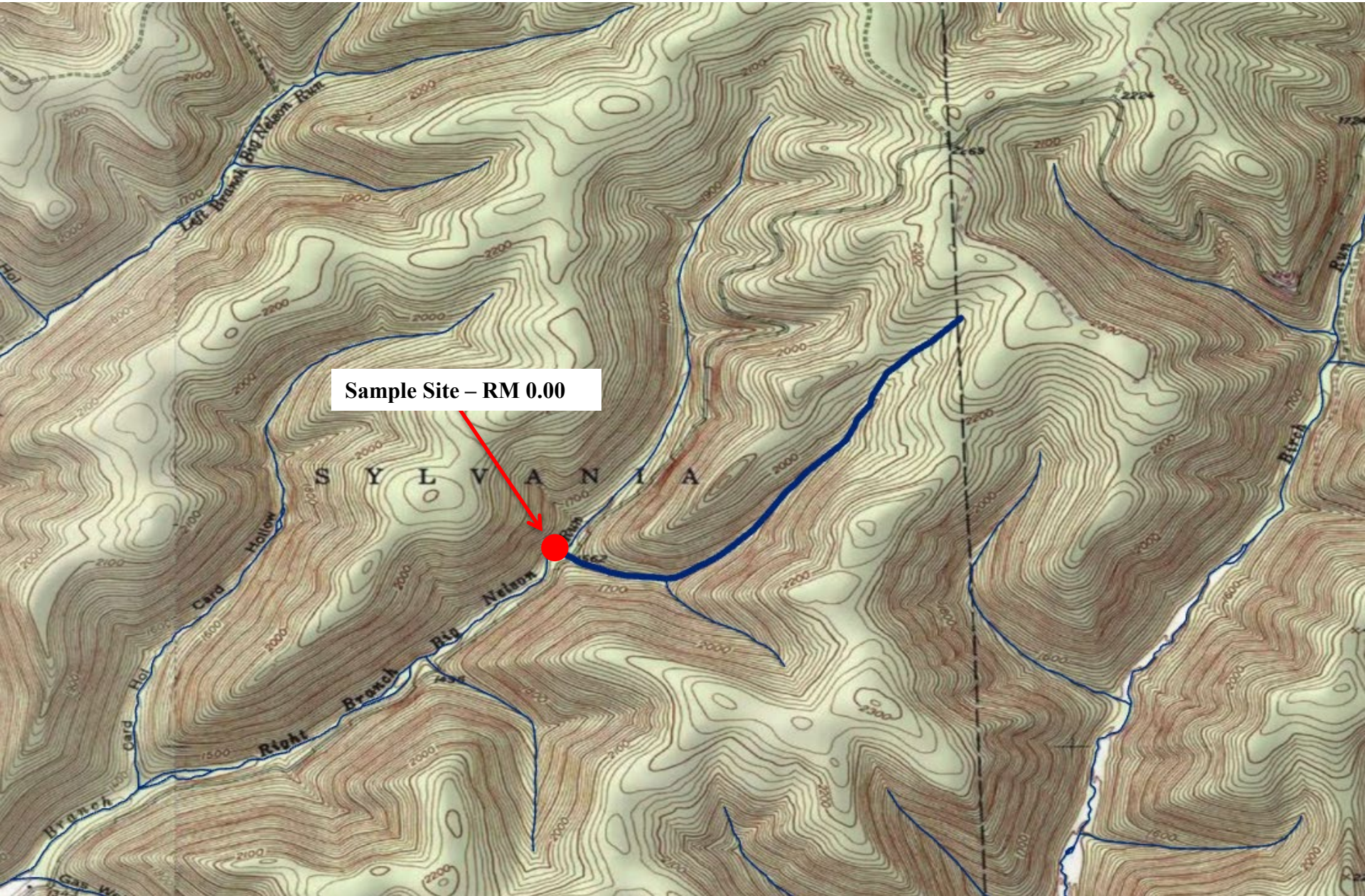
Sample Site - RM 0.30

Horton Run, Potter County

Brook Trout RM – 0.30
Site Length – 430 meters

Length Group (inches)	Catch	Estimated Kg/Ha	Estimated Number/Km
1	13	0.25	30
2	347	15.60	807
3	36	3.85	84
4	18	4.47	42
5	34	15.09	79
6	18	13.44	42
7	20	23.23	47
8	7	11.78	16
9	2	4.79	5
Total	495	92.50	1,152

UNT to Right Branch Big Nelson Run (RM 2.39), Potter County

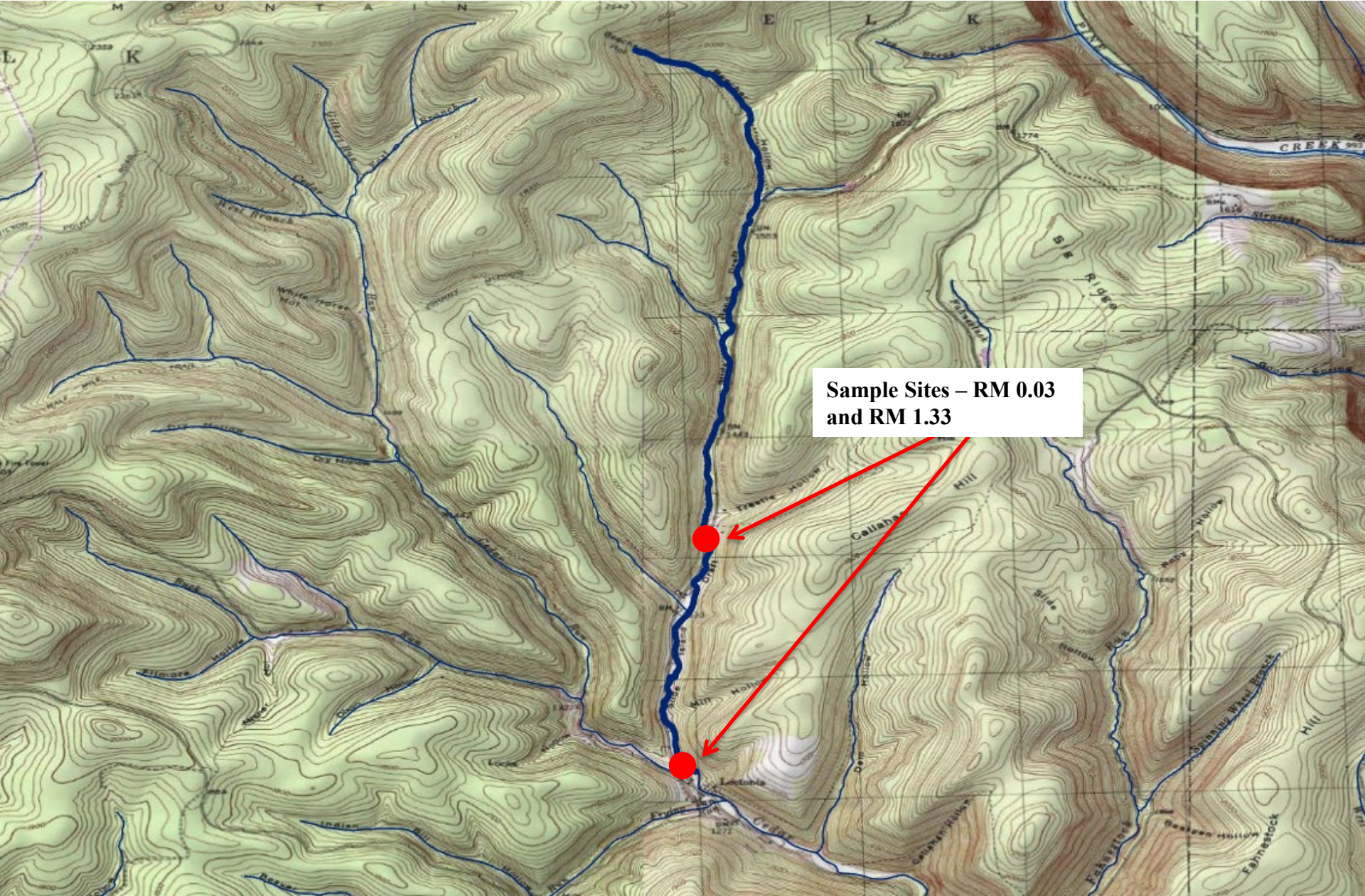


UNT to Right Branch Big Nelson Run (RM 2.39), Potter County

Brook Trout RM – 0.00
Site Length – 225 meters

Length Group (inches)	Catch	Estimated Kg/Ha	Estimated Number/Km
2	35	5.06	156
3	32	11.01	142
4	2	1.60	9
5	6	8.56	27
6	2	4.80	9
Total	77	31.03	343

Slide Island Draft, Tioga County



Sample Sites – RM 0.03
and RM 1.33

Slide Island Draft, Tioga County

Brook Trout RM – 0.03
Site Length – 380 meters

Length Group (inches)	Catch	Estimated Kg/Ha	Estimated Number/Km
2	35	1.15	92
5	7	2.26	18
6	7	3.80	18
8	1	1.22	3
Total	50	8.43	131

Brown Trout RM – 0.03
Site Length – 380 meters

Length Group (inches)	Catch	Estimated Kg/Ha	Estimated Number/Km
1	18	0.25	47
2	27	0.91	71
3	1	0.08	3
4	27	5.12	71
5	45	15.62	118
6	7	4.06	18
7	7	6.22	18
8	4	5.14	11
9	3	5.36	8
10	2	4.82	5
11	2	6.27	5
12	1	4.02	3
16	1	9.21	3
Total	145	67.08	381

Slide Island Draft, Tioga County

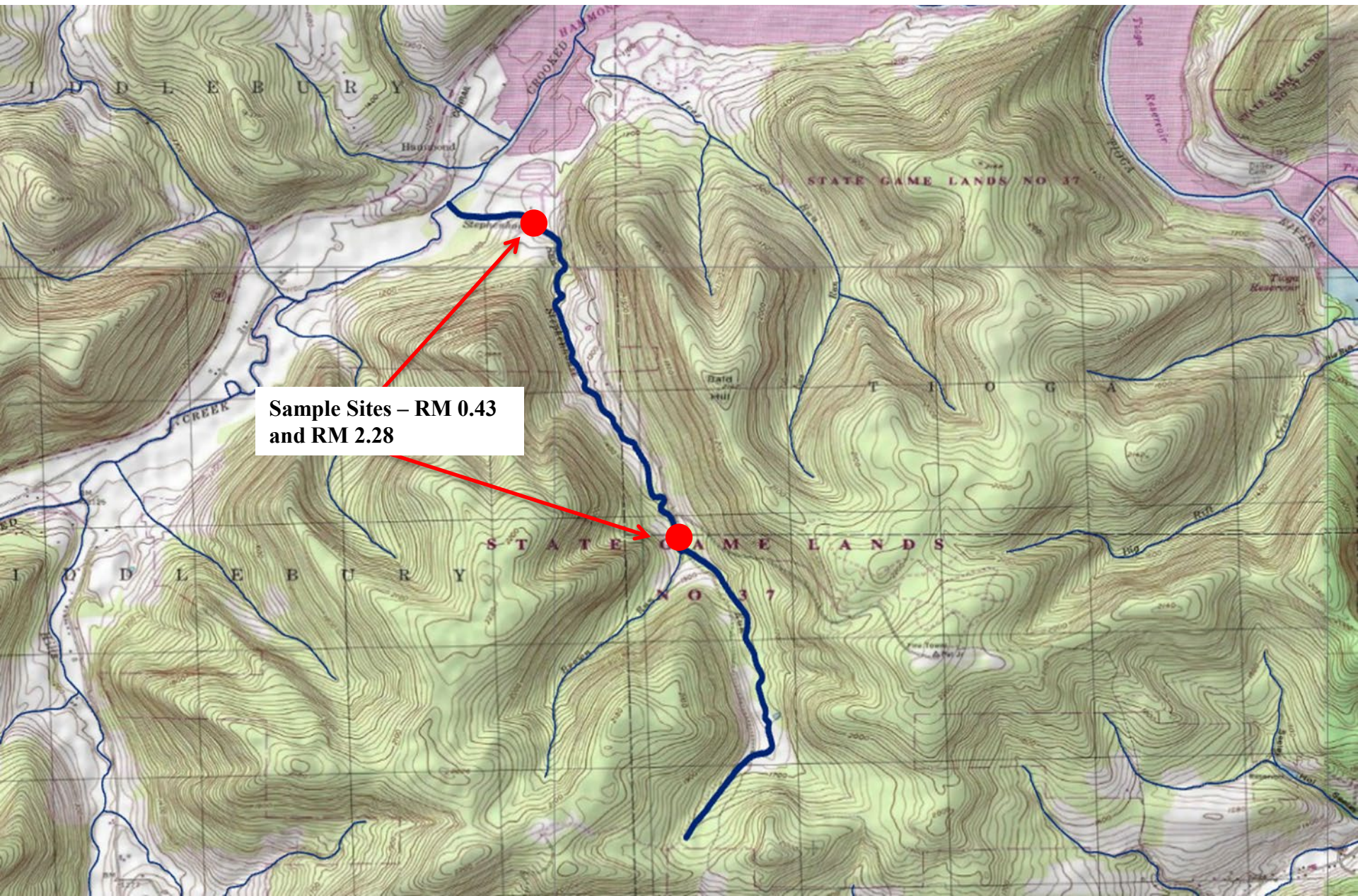
Brook Trout RM – 1.33
Site Length – 360 meters

Length Group (inches)	Catch	Estimated Kg/Ha	Estimated Number/Km
2	48	1.66	133
3	1	0.08	3
4	12	2.29	33
5	22	7.50	61
6	17	9.75	47
7	6	5.35	17
8	1	1.29	3
9	1	1.84	3
Total	108	29.76	300

Brown Trout RM – 1.33
Site Length – 360 meters

Length Group (inches)	Catch	Estimated Kg/Ha	Estimated Number/Km
4	13	2.60	36
5	10	3.67	28
6	15	9.18	42
7	5	4.69	14
8	3	4.07	8
9	1	1.89	3
10	1	2.55	3
Total	48	28.65	134

Stephenhouse Run, Tioga County



Sample Sites – RM 0.43
and RM 2.28

Stephenhouse Run, Tioga County

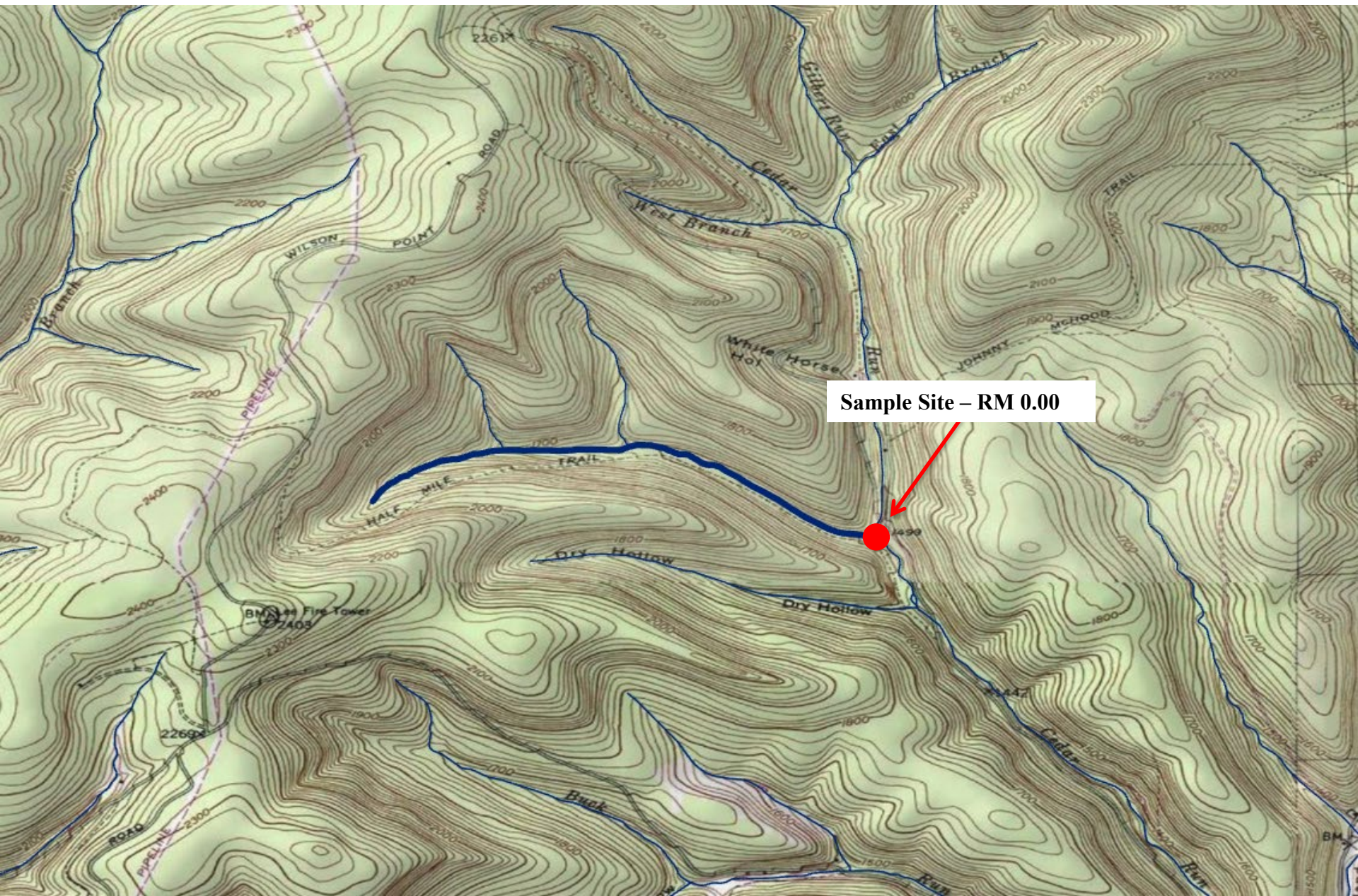
Brook Trout RM – 0.43
Site Length – 330 meters

Brook Trout RM – 2.28
Site Length – 330 meters

Length Group (inches)	Catch	Estimated Kg/Ha	Estimated Number/Km
1	1	0.01	3
2	44	1.73	258
4	12	1.68	45
5	16	3.61	55
6	6	2.36	21
7	5	3.15	18
8	3	2.28	9
Total	87	14.82	409

Length Group (inches)	Catch	Estimated Kg/Ha	Estimated Number/Km
1	4	0.06	12
2	137	10.68	855
3	1	0.09	3
4	26	6.69	97
5	32	13.45	109
6	25	17.60	85
7	9	11.74	36
8	2	2.83	6
Total	236	63.14	1,203

UNT to Cedar Run (RM 9.34), Tioga County



UNT to Cedar Run (RM 9.34), Tioga County

Brook Trout RM – 0.00
Site Length – 235 meters

Length Group (inches)	Catch	Estimated Kg/Ha	Estimated Number/Km
2	59	5.17	251
3	3	0.63	13
4	10	4.84	43
5	11	9.52	47
6	8	11.65	34
7	1	2.27	4
8	1	3.28	4
Total	93	37.36	396

Brown Trout RM – 0.00
Site Length – 235 meters

Length Group (inches)	Catch	Estimated Kg/Ha	Estimated Number/Km
1	2	0.07	9
2	4	0.36	17
3	1	0.23	4
6	4	6.22	17
8	1	3.44	4
Total	12	10.32	51

UNT to Slide Island Draft (RM 0.92), Tioga County

