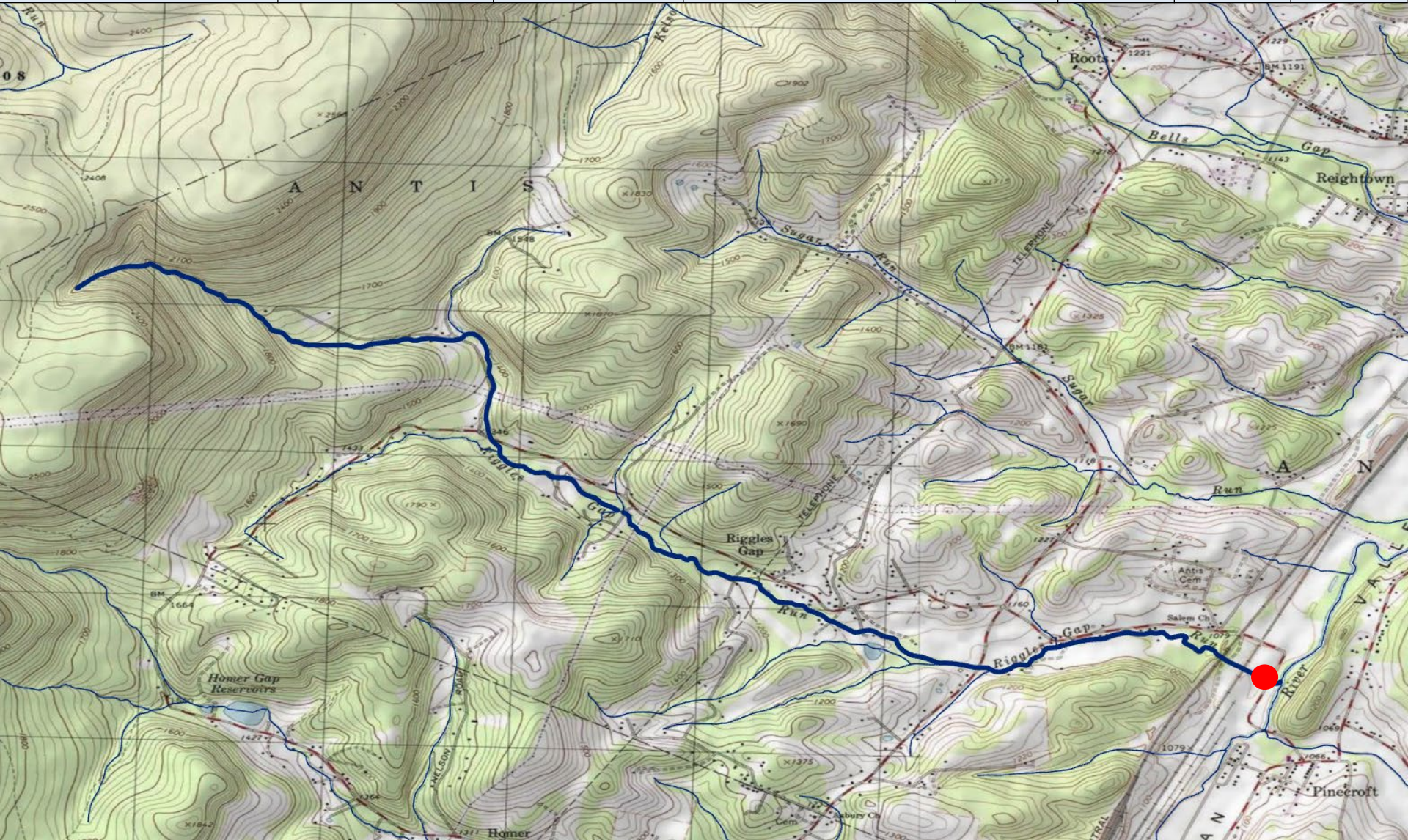


# EXHIBIT I

## Wild Trout Additions

County of Mouth	Stream Name	Tributary To	Wild Trout Limits	Site River-mile <span style="color: red;">●</span>	Species	Catch	Length (inches)
Blair	Riggles Gap Run	Little Juniata River	Headwaters to mouth	0.04	Brown	19	1-12





County of Mouth	Stream Name	Tributary To	Wild Trout Limits	Site River-mile <span style="color: red;">●</span>	Species	Catch	Length (inches)
Lycoming	Little Mill Creek	Mill Creek (Montoursville)	Headwaters to mouth	0.31	Brown	14	1-14



# Wild Trout Revisions



County of Mouth	Stream Name	Tributary To	Current Wild Trout Limits	Revised Wild Trout Limits	Site River-mile ●	Species	Catch	Length (inches)
Clearfield	Flegals Run	Lick Run	Headwaters to Brown Hollow Road	Headwaters to mouth	0.30	Brook	54	2-7

