

# Wild Trout Additions

County of Mouth	Stream Name	Tributary To	Wild Trout Limits	Site River-mile <span style="color: red;">●</span>	Species	Catch	Length (inches)
Bedford	UNT to Bobs Creek (RM 15.75)	Bobs Creek	Headwaters to mouth	0.00	Brook Brown	13 9	2-7 1-7



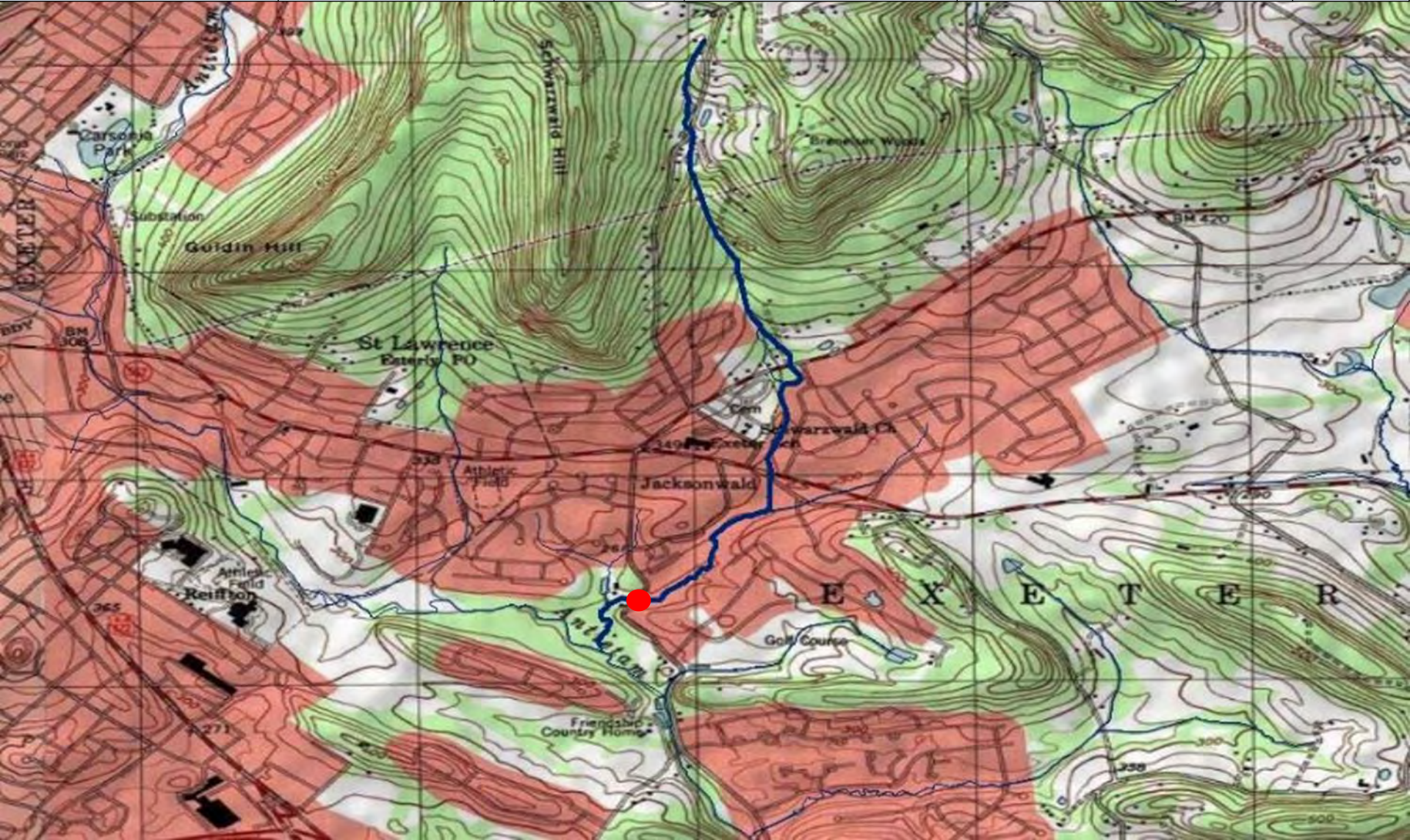


County of Mouth	Stream Name	Tributary To	Wild Trout Limits	Site River-mile <span style="color: red;">●</span>	Species	Catch	Length (inches)
Bedford	UNT to Potter Creek (RM 3.39)	Potter Creek	Headwaters to mouth	0.00	Brown	3	6-12





County of Mouth	Stream Name	Tributary To	Wild Trout Limits	Site River-mile ●	Species	Catch	Length (inches)
Berks	UNT to Antietam Creek (RM 2.93)	Antietam Creek	Headwaters to mouth	0.26	Brown	7	3-7





County of Mouth	Stream Name	Tributary To	Wild Trout Limits	Site River-mile <span style="color: red;">●</span>	Species	Catch	Length (inches)
Blair	Glenwhite Run	Burgoon Run	Headwaters to the first Veterans Memorial Highway bridge upstream of the mouth	1.91	Brook	11	6-9





County of Mouth	Stream Name	Tributary To	Wild Trout Limits	Site River-mile <span style="color: red;">●</span>	Species	Catch	Length (inches)
Cambria	Saint Clair Run	Conemaugh River	Headwaters to abandoned mine discharge at RM 2.57	2.57	Brook	10	2-5





County of Mouth	Stream Name	Tributary To	Wild Trout Limits	Site River-mile <span style="color: red;">●</span>	Species	Catch	Length (inches)
Cambria	UNT to Laurel Run (RM 3.13)	Laurel Run	Headwaters to mouth	0.11	Brook	14	3-5





County of Mouth	Stream Name	Tributary To	Wild Trout Limits	Site River-mile ●	Species	Catch	Length (inches)
Cambria	UNT to Laurel Run (RM 3.88)	Laurel Run	Headwaters to mouth	0.00	Brook	66	1-7





County of Mouth	Stream Name	Tributary To	Wild Trout Limits	Site River-mile <span style="color: red;">●</span>	Species	Catch	Length (inches)
Cambria	UNT to Little Killbuck Run (RM 1.93)	Little Killbuck Run	Headwaters to mouth	0.00	Brook	5	2-5





County of Mouth	Stream Name	Tributary To	Wild Trout Limits	Site River-mile <span style="color: red;">●</span>	Species	Catch	Length (inches)
Cameron	Butler Hollow Run	Sizer Run	Headwaters to mouth	0.00	Brook	3	4-5





County of Mouth	Stream Name	Tributary To	Wild Trout Limits	Site River-mile <span style="color: red;">●</span>	Species	Catch	Length (inches)
Cameron	Kreitner Hollow Run	Sinnemahoning Portage Creek	Headwaters to mouth	0.00	Brook	4	1-2





County of Mouth	Stream Name	Tributary To	Wild Trout Limits	Site River-mile <span style="color: red;">●</span>	Species	Catch	Length (inches)
Cameron	Slaughter House Hollow Run	Sinnemahoning Portage Creek	Headwaters to mouth	0.06	Brook	10	1






County of Mouth	Stream Name	Tributary To	Wild Trout Limits	Site River-mile <span style="color: red;">●</span>	Species	Catch	Length (inches)
Cameron	Weller Hollow Run	Sinnemahoning Portage Creek	Headwaters to mouth	0.00	Brook	3	2





County of Mouth	Stream Name	Tributary To	Wild Trout Limits	Site River-mile 	Species	Catch	Length (inches)
Carbon	Bear Creek	Nesquehoning Creek	Headwaters to mouth	0.05	Brook	33	2-7





County of Mouth	Stream Name	Tributary To	Wild Trout Limits	Site River-mile ●	Species	Catch	Length (inches)
Centre	UNT to Wolf Run (RM 4.55)	Wolf Run	Headwaters to mouth	0.00	Brook	19	2-5





County of Mouth	Stream Name	Tributary To	Wild Trout Limits	Site River-mile <span style="color: red;">●</span>	Species	Catch	Length (inches)
Centre	UNT to Wolf Run (RM 4.82)	Wolf Run	Headwaters to mouth	0.00	Brook	43	2-6





County of Mouth	Stream Name	Tributary To	Wild Trout Limits	Site River-mile <span style="color: red;">●</span>	Species	Catch	Length (inches)
Clearfield	Curleys Run	Mosquito Creek	Headwaters to mouth	0.06	Brook	37	2-6





County of Mouth	Stream Name	Tributary To	Wild Trout Limits	Site River-mile <span style="color: red;">●</span>	Species	Catch	Length (inches)
Clearfield	Grimes Run	Mosquito Creek	Headwaters to mouth	0.18	Brook	6	2-5



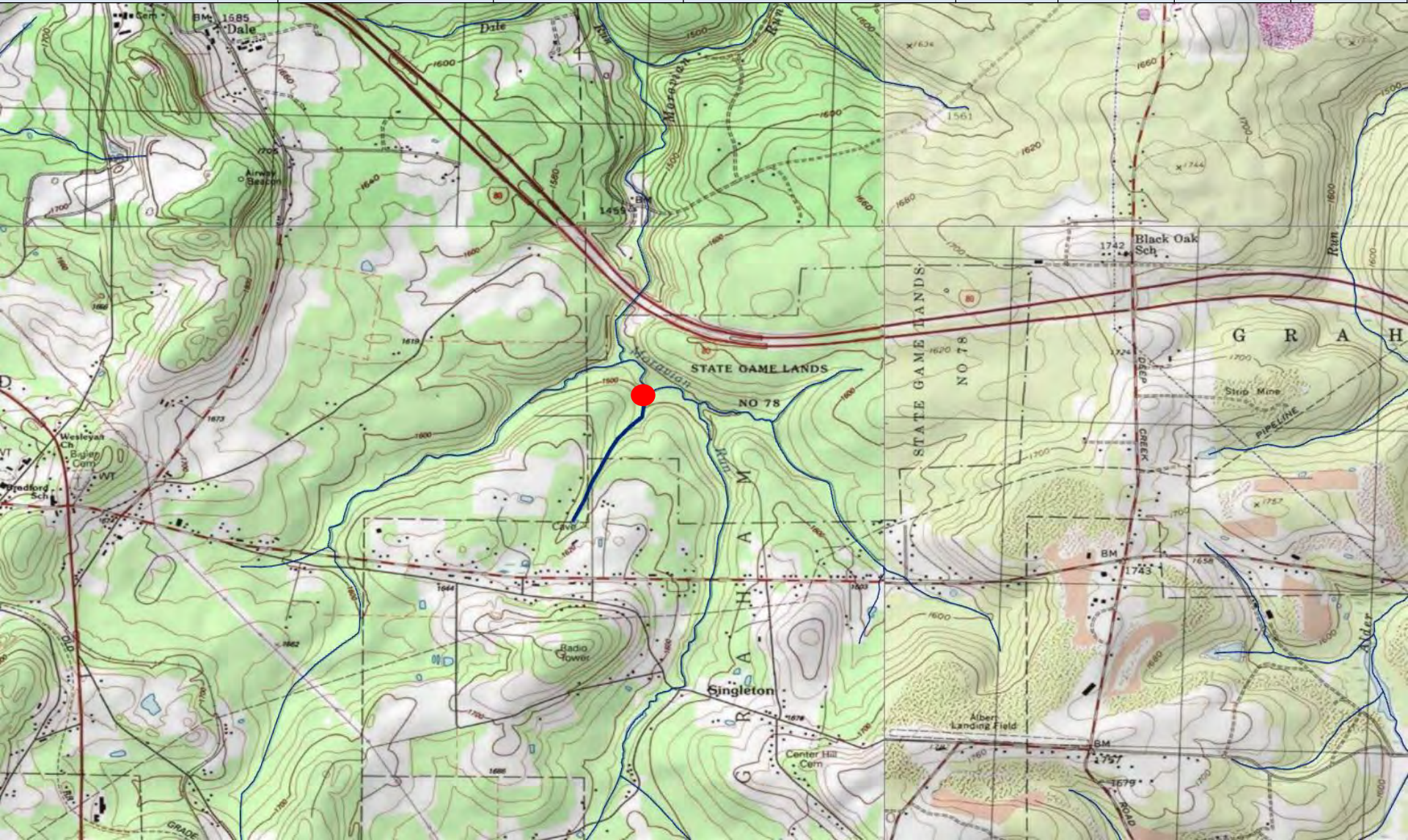


County of Mouth	Stream Name	Tributary To	Wild Trout Limits	Site River-mile <span style="color: red;">●</span>	Species	Catch	Length (inches)
Clearfield	UNT to Grimes Run (RM 1.10)	Grimes Run	Headwaters to mouth	0.00	Brook	5	3-5





County of Mouth	Stream Name	Tributary To	Wild Trout Limits	Site River-mile ●	Species	Catch	Length (inches)
Clearfield	UNT to Moravian Run (Cave Run)	Moravian Run	Headwaters to mouth	0.03	Brook	9	4-5






County of Mouth	Stream Name	Tributary To	Wild Trout Limits	Site River-mile <span style="color: red;">●</span>	Species	Catch	Length (inches)
Clearfield	UNT to South Witmer Run (RM 5.63)	South Witmer Run	Headwaters to mouth	0.01	Brook	13	2-6





County of Mouth	Stream Name	Tributary To	Wild Trout Limits	Site River-mile 	Species	Catch	Length (inches)
Clinton	UNT to Craig Fork (RM 2.54)	Craig Fork	Headwaters to mouth	0.00	Brook	16	2-7



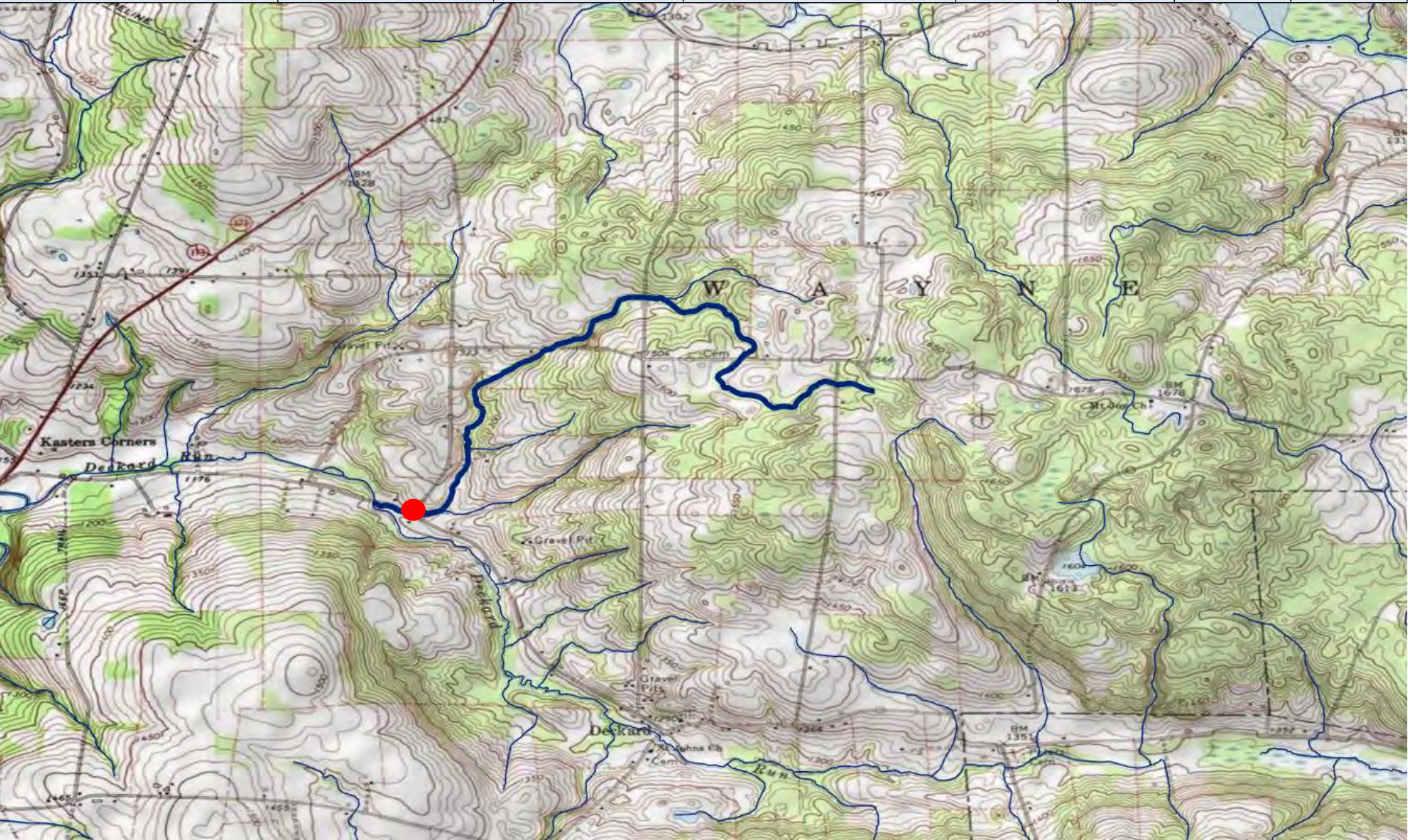


County of Mouth	Stream Name	Tributary To	Wild Trout Limits	Site River-mile <span style="color: red;">●</span>	Species	Catch	Length (inches)
Clinton	UNT to Lick Run (RM 11.12)	Lick Run	Headwaters to mouth	0.00	Brook Brown	10 7	1-5 3-5





County of Mouth	Stream Name	Tributary To	Wild Trout Limits	Site River-mile <span style="color: red;">●</span>	Species	Catch	Length (inches)
Crawford	UNT to Deckard Run (RM 1.16)	Deckard Run	Headwaters to mouth	0.05	Brown	3	6-7





County of Mouth	Stream Name	Tributary To	Wild Trout Limits	Site River-mile ●	Species	Catch	Length (inches)
Elk	South Branch Laurel Run	Laurel Run	Headwaters to mouth	0.01	Brook	8	2-6





County of Mouth	Stream Name	Tributary To	Wild Trout Limits	Site River-mile ●	Species	Catch	Length (inches)
Elk	UNT to Laurel Run (RM 2.01)	Laurel Run	Headwaters to mouth	0.07	Brook	4	2



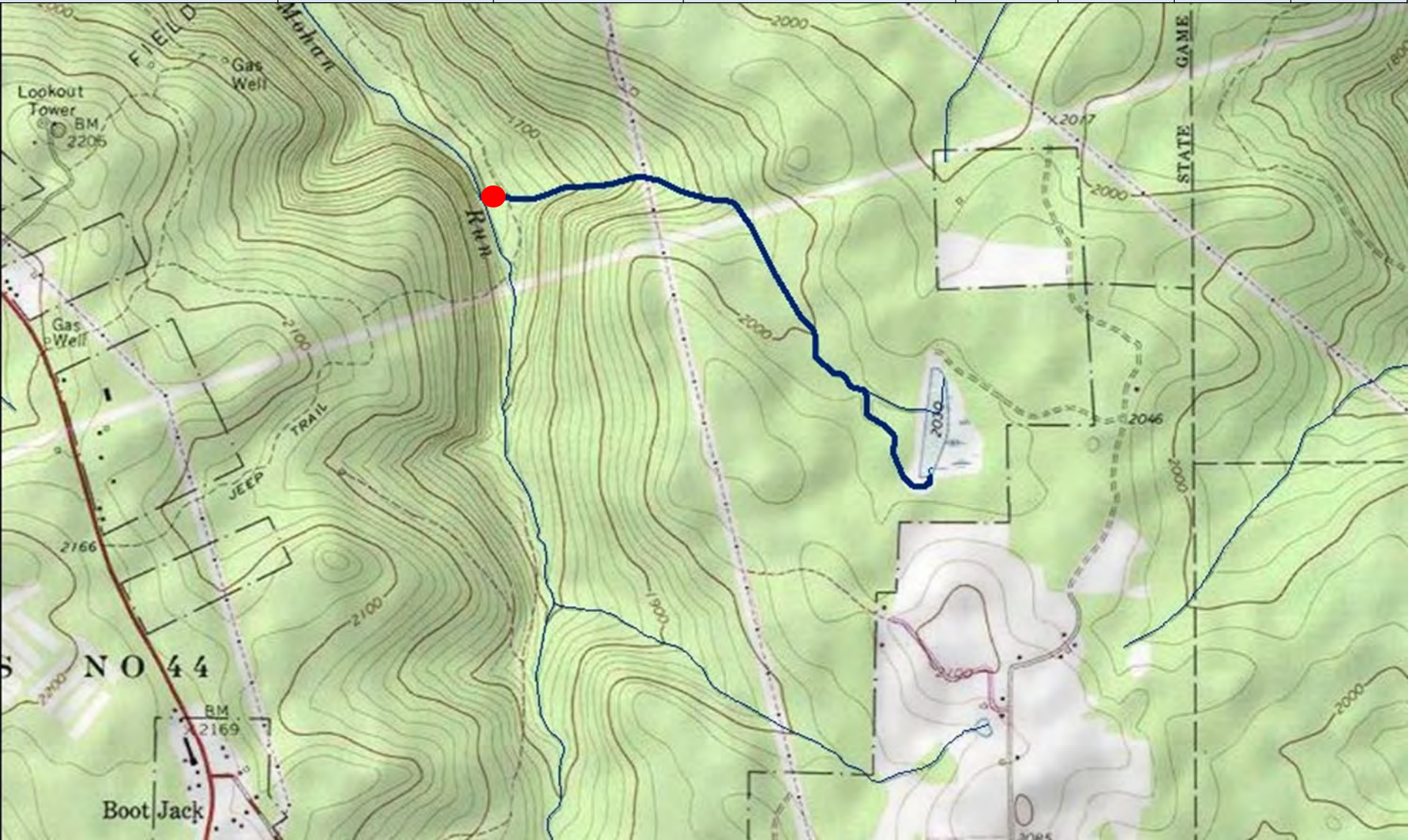


County of Mouth	Stream Name	Tributary To	Wild Trout Limits	Site River-mile <span style="color: red;">●</span>	Species	Catch	Length (inches)
Elk	UNT to Mead Run (RM 2.61)	Mead Run	Headwaters to mouth	0.23	Brook	5	2-5



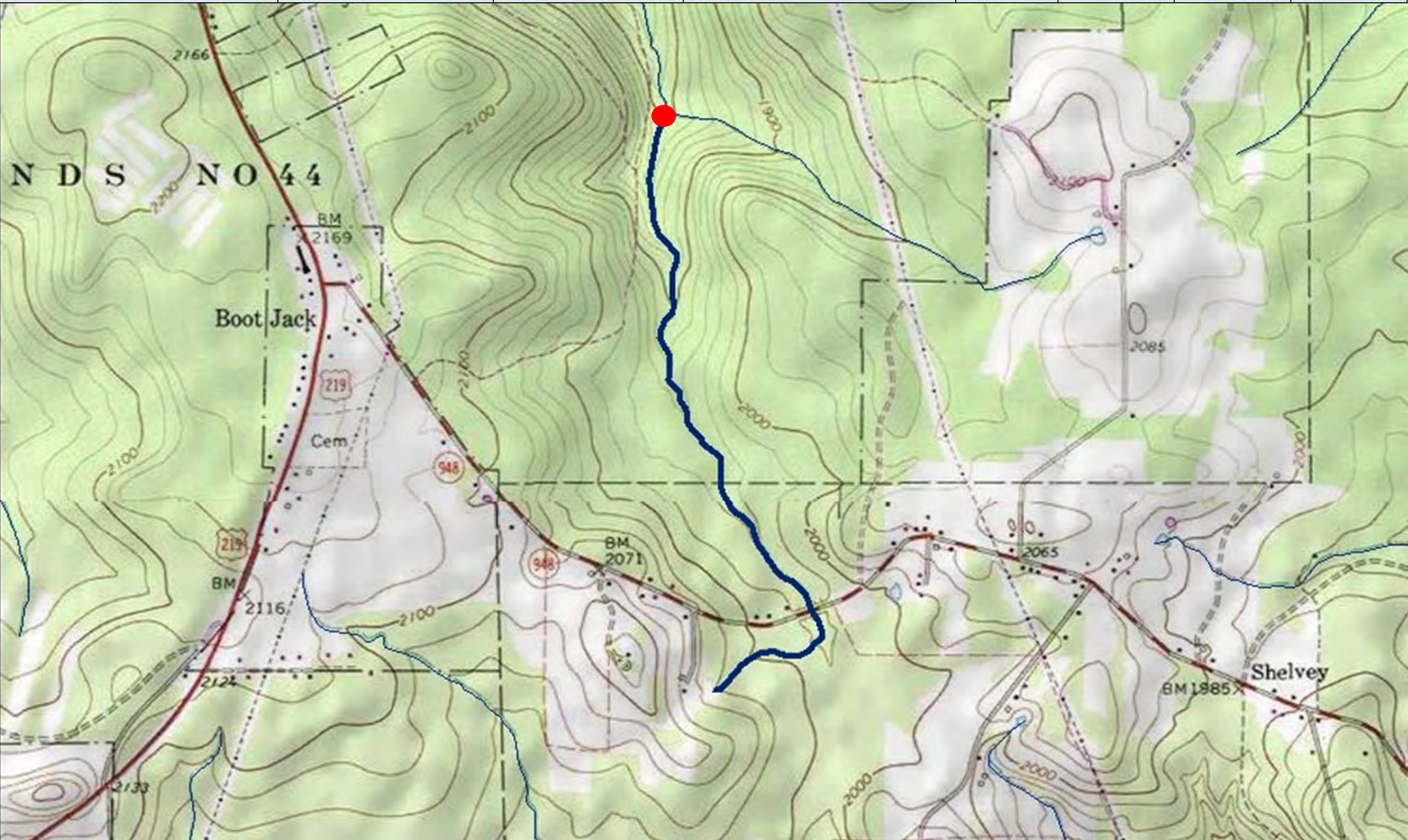


County of Mouth	Stream Name	Tributary To	Wild Trout Limits	Site River-mile ●	Species	Catch	Length (inches)
Elk	UNT to Mohan Run (RM 1.80)	Mohan Run	Headwaters to mouth	0.03	Brook	17	2-7




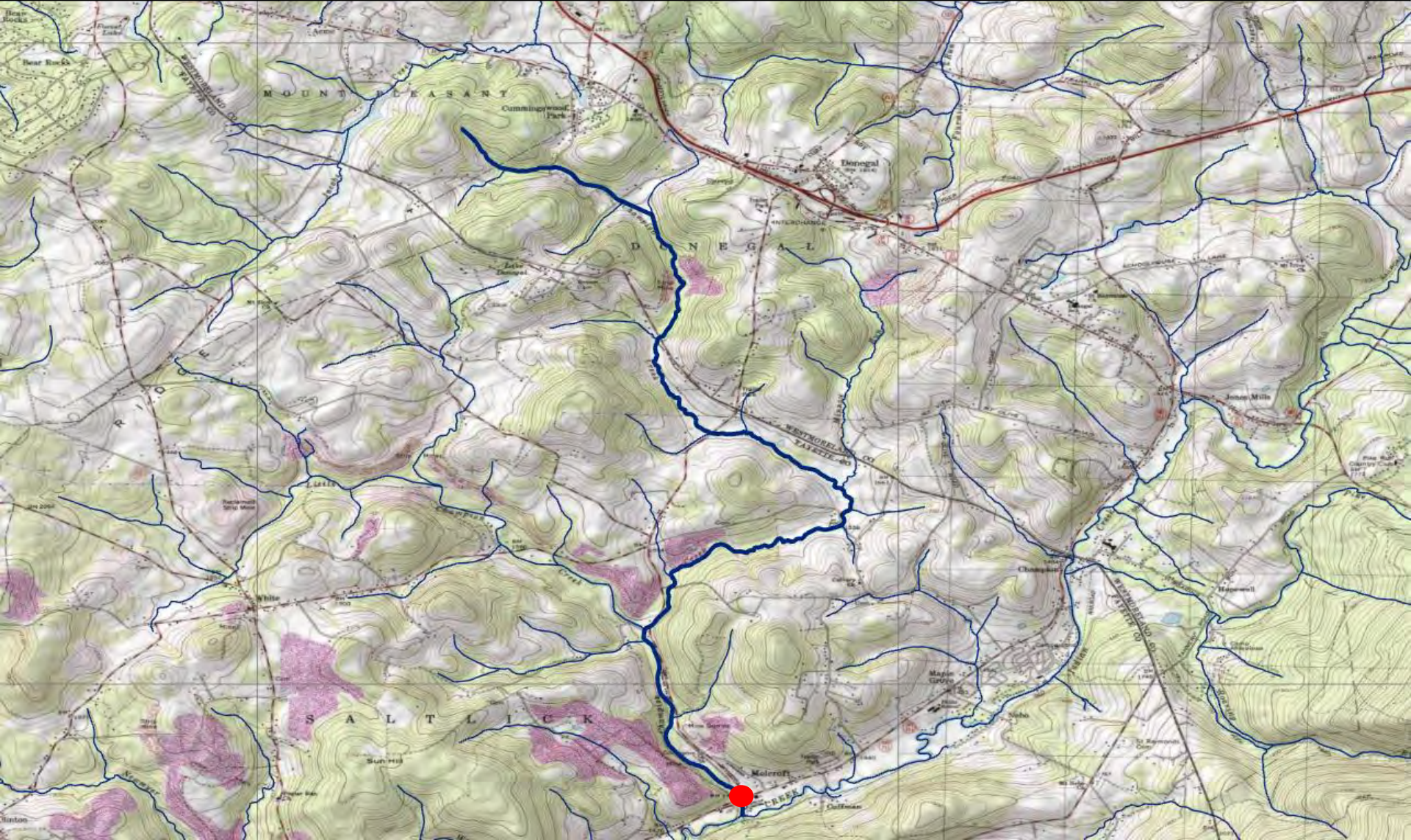


County of Mouth	Stream Name	Tributary To	Wild Trout Limits	Site River-mile <span style="color: red;">●</span>	Species	Catch	Length (inches)
Elk	UNT to Mohan Run (RM 2.66)	Mohan Run	Headwaters to mouth	0.02	Brook	3	2-5





County of Mouth	Stream Name	Tributary To	Wild Trout Limits	Site River-mile 	Species	Catch	Length (inches)
Fayette	Champion Creek	Indian Creek	Headwaters to mouth	0.10	Brown	16	3-17



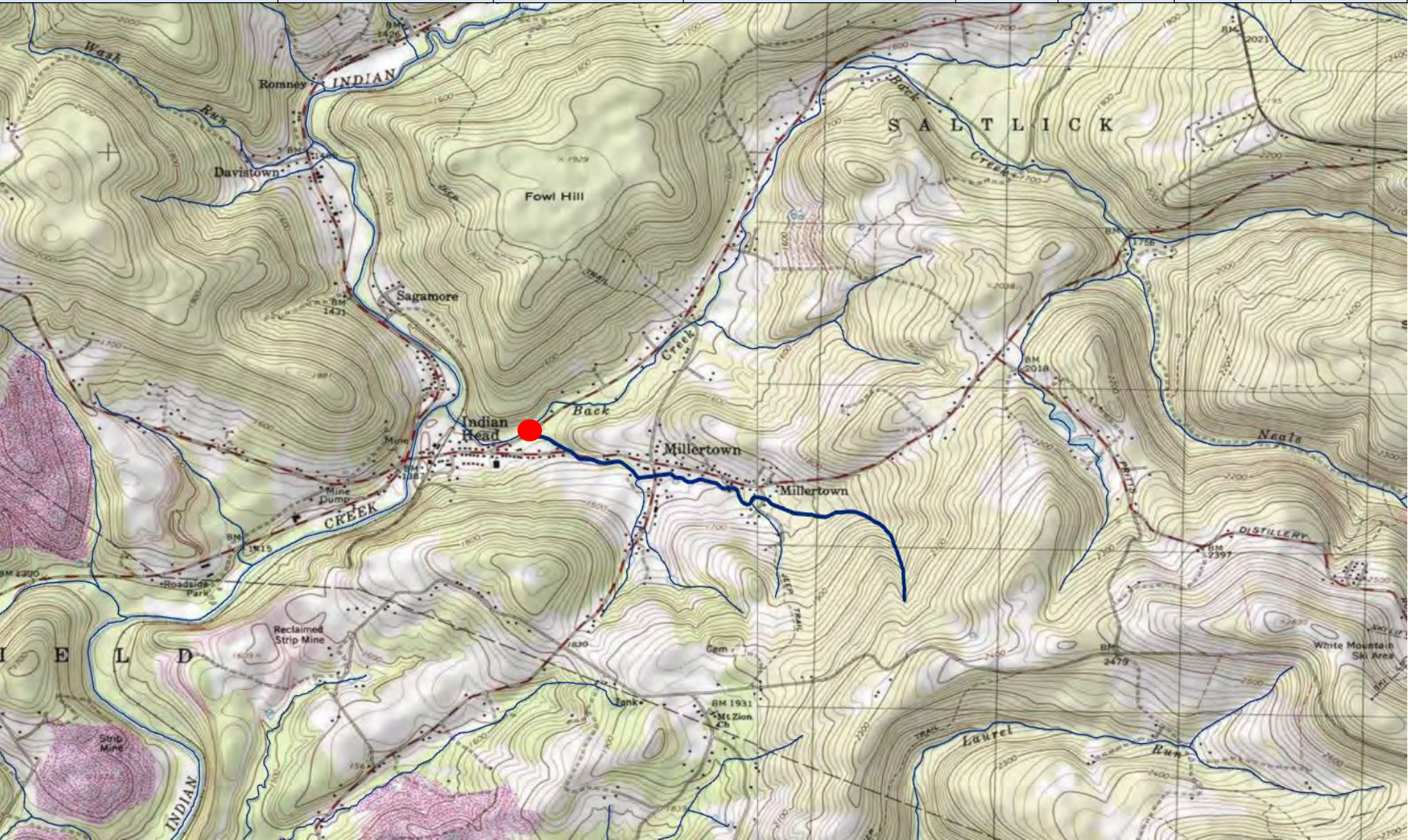


County of Mouth	Stream Name	Tributary To	Wild Trout Limits	Site River-mile <span style="color: red;">●</span>	Species	Catch	Length (inches)
Fayette	Little Champion Creek	Champion Creek	Headwaters to mouth	0.00	Brown	14	2-7






County of Mouth	Stream Name	Tributary To	Wild Trout Limits	Site River-mile <span style="color: red;">●</span>	Species	Catch	Length (inches)
Fayette	UNT to Back Creek (RM 0.36)	Back Creek	Headwaters to mouth	0.01	Brown	9	2-7





County of Mouth	Stream Name	Tributary To	Wild Trout Limits	Site River-mile 	Species	Catch	Length (inches)
Fulton	UNT to West Fork Roaring Run (RM 1.11)	West Fork Roaring Run	Headwaters to mouth	0.00	Brook	4	4-5





County of Mouth	Stream Name	Tributary To	Wild Trout Limits	Site River-mile <span style="color: red;">●</span>	Species	Catch	Length (inches)
Indiana	UNT to Dixon Run (RM 5.97)	Dixon Run	Headwaters to mouth	0.01	Brown	3	8-17



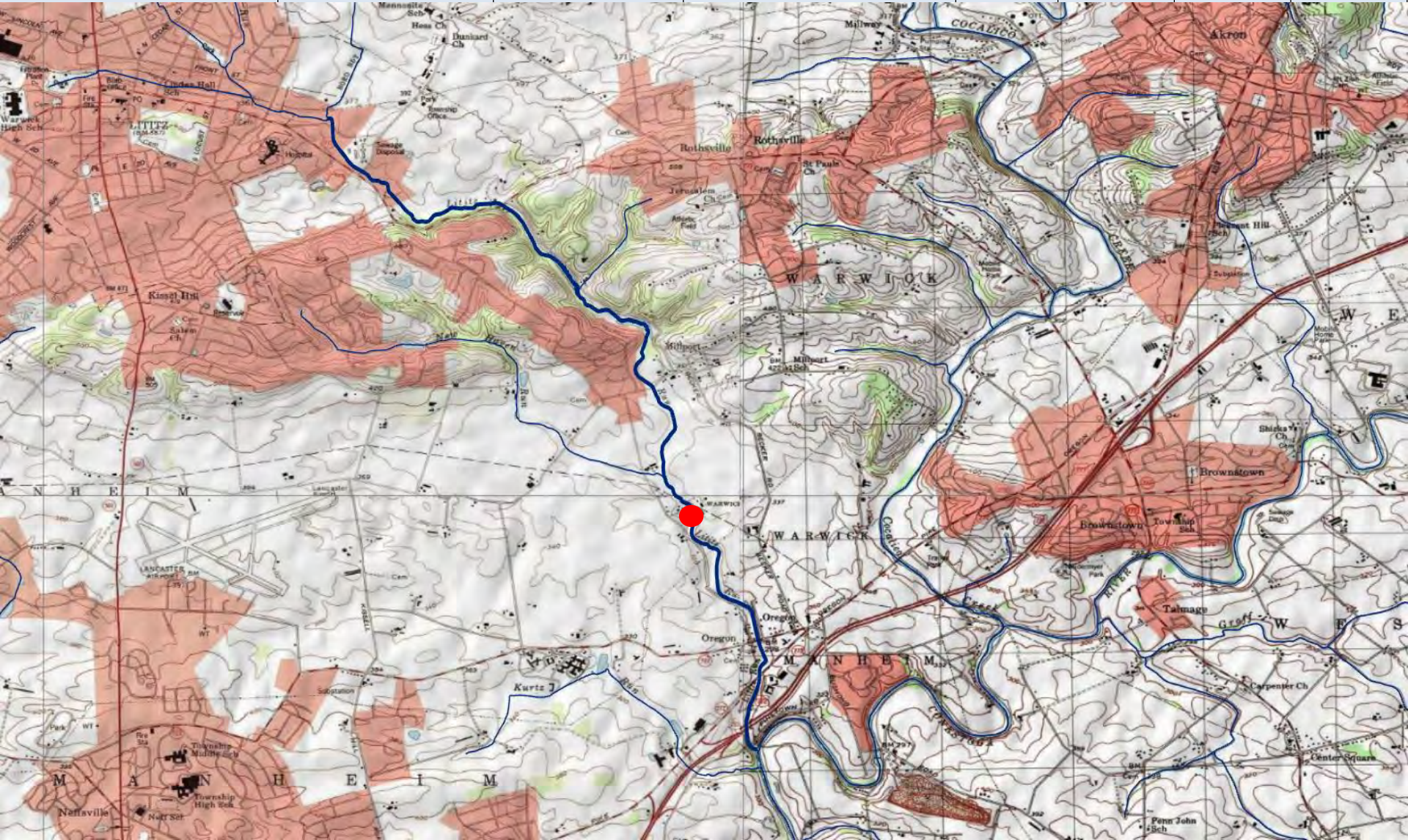


County of Mouth	Stream Name	Tributary To	Wild Trout Limits	Site River-mile ●	Species	Catch	Length (inches)
Indiana	UNT to Little Mahoning Creek (RM 1.54)	Little Mahoning Creek	Headwaters to mouth	0.05	Brown	3	7-12





County of Mouth	Stream Name	Tributary To	Wild Trout Limits	Site River-mile ●	Species	Catch	Length (inches)
Lancaster	Lititz Run	Conestoga River	Santo Domingo Creek to mouth	1.44	Brown Rainbow	2 40	12-18 4-6





County of Mouth	Stream Name	Tributary To	Wild Trout Limits	Site River-mile <span style="color: red;">●</span>	Species	Catch	Length (inches)
Lehigh	UNT to Little Lehigh Creek (RM 7.08)	Little Lehigh Creek	Headwaters to mouth	0.01	Brook Brown	1 6	5 2-7





County of Mouth	Stream Name	Tributary To	Wild Trout Limits	Site River-mile <span style="color: red;">●</span>	Species	Catch	Length (inches)
Lehigh	UNT to Mill Creek (RM 2.20)	Mill Creek	Headwaters to mouth	0.00	Brown	6	2-12





County of Mouth	Stream Name	Tributary To	Wild Trout Limits	Site River-mile ●	Species	Catch	Length (inches)
Lehigh	UNT to Swabia Creek (RM 4.79)	Swabia Creek	Headwaters to mouth	0.31	Brown	3	3-7





County of Mouth	Stream Name	Tributary To	Wild Trout Limits	Site River-mile <span style="color: red;">●</span>	Species	Catch	Length (inches)
Luzerne	UNT to Long Run (RM 1.08)	Long Run	Headwaters to mouth	0.01	Brook	19	2-6





County of Mouth	Stream Name	Tributary To	Wild Trout Limits	Site River-mile <span style="color: red;">●</span>	Species	Catch	Length (inches)
Lycoming	UNT to Blockhouse Creek (RM 8.18)	Blockhouse Creek	Headwaters to mouth	0.00	Brook	20	1-6





County of Mouth	Stream Name	Tributary To	Wild Trout Limits	Site River-mile <span style="color: red;">●</span>	Species	Catch	Length (inches)
Lycoming	UNT to Pine Creek (RM 9.04)	Pine Creek	Headwaters to mouth	0.00	Brook	3	1-3





County of Mouth	Stream Name	Tributary To	Wild Trout Limits	Site River-mile <span style="color: red;">●</span>	Species	Catch	Length (inches)
McKean	Little Fill Hollow Run	Sinnemahoning Portage Creek	Headwaters to mouth	0.01	Brook	10	2-5





County of Mouth	Stream Name	Tributary To	Wild Trout Limits	Site River-mile <span style="color: red;">●</span>	Species	Catch	Length (inches)
Mifflin	UNT to Hungry Run (RM 0.84)	Hungry Run	Headwaters to mouth	0.00	Brown	14	3-8





County of Mouth	Stream Name	Tributary To	Wild Trout Limits	Site River-mile ●	Species	Catch	Length (inches)
Monroe	Jim Smith Run	Tobyhanna Creek	Headwaters to mouth	0.51	Brook	10	2-7






County of Mouth	Stream Name	Tributary To	Wild Trout Limits	Site River-mile ●	Species	Catch	Length (inches)
Pike	UNT to Masthope Creek (RM 3.03)	Masthope Creek	Headwaters to mouth	0.01	Brook Brown	2 3	3 3





County of Mouth	Stream Name	Tributary To	Wild Trout Limits	Site River-mile 	Species	Catch	Length (inches)
Potter	UNT (RM 0.68) to UNT to Lyman Run (RM 5.85)	UNT to Lyman Run (RM 5.85)	Headwaters to mouth	0.00	Brook	3	1-6






County of Mouth	Stream Name	Tributary To	Wild Trout Limits	Site River-mile ●	Species	Catch	Length (inches)
Potter	UNT (RM 0.86) to UNT to Pine Creek (RM 83.96)	UNT to Pine Creek (RM 83.96)	Headwaters to mouth	0.00	Brook	5	4-7





County of Mouth	Stream Name	Tributary To	Wild Trout Limits	Site River-mile 	Species	Catch	Length (inches)
Potter	UNT to Cushing Hollow Run (RM 2.40)	Cushing Hollow Run	Headwaters to mouth	0.01	Brook	7	1-5





County of Mouth	Stream Name	Tributary To	Wild Trout Limits	Site River-mile <span style="color: red;">●</span>	Species	Catch	Length (inches)
Potter	UNT to Dry Run (RM 1.58)	Dry Run	Headwaters to mouth	0.01	Brook	41	2-7





County of Mouth	Stream Name	Tributary To	Wild Trout Limits	Site River-mile <span style="color: red;">●</span>	Species	Catch	Length (inches)
Potter	UNT to Hopper House Hollow Run (RM 0.90)	Hopper House Hollow Run	Headwaters to mouth	0.00	Brook	18	2-8





County of Mouth	Stream Name	Tributary To	Wild Trout Limits	Site River-mile <span style="color: red;">●</span>	Species	Catch	Length (inches)
Potter	UNT to Johnson Brook (RM 3.35)	Johnson Brook	Headwaters to mouth	0.00	Brook	6	2-6





County of Mouth	Stream Name	Tributary To	Wild Trout Limits	Site River-mile <span style="color: red;">●</span>	Species	Catch	Length (inches)
Potter	UNT to Meeker Hollow (RM 2.81)	Meeker Hollow	Headwaters to mouth	0.03	Brook	3	2-4





County of Mouth	Stream Name	Tributary To	Wild Trout Limits	Site River-mile ●	Species	Catch	Length (inches)
Potter	UNT to Meeker Hollow (RM 2.95)	Meeker Hollow	Headwaters to mouth	0.00	Brook	18	2-8





County of Mouth	Stream Name	Tributary To	Wild Trout Limits	Site River-mile <span style="color: red;">●</span>	Species	Catch	Length (inches)
Potter	UNT to Pine Creek (RM 80.54)	Pine Creek	Headwaters to mouth	0.00	Brook	11	1-8





County of Mouth	Stream Name	Tributary To	Wild Trout Limits	Site River-mile <span style="color: red;">●</span>	Species	Catch	Length (inches)
Potter	UNT to West Branch Pine Creek (RM 11.34)	West Branch Pine Creek	Headwaters to mouth	0.06	Brook Brown	3 1	1-2 1









County of Mouth	Stream Name	Tributary To	Wild Trout Limits	Site River-mile ●	Species	Catch	Length (inches)
Schuylkill	Beaver Creek	West Branch Schuylkill River	Headwaters to mouth	0.37	Brook Brown	2 9	2-3 2-6





County of Mouth	Stream Name	Tributary To	Wild Trout Limits	Site River-mile <span style="color: red;">●</span>	Species	Catch	Length (inches)
Schuylkill	Sinking Run	Lofty Creek	Headwaters to mouth	0.01	Brook	23	3-9





County of Mouth	Stream Name	Tributary To	Wild Trout Limits	Site River-mile <span style="color: red;">●</span>	Species	Catch	Length (inches)
Schuylkill	UNT (RM 0.36) to UNT to Beaver Creek (RM 1.56)	UNT to Beaver Creek (RM 1.56)	Headwaters to mouth	0.37	Brook	5	3-9









County of Mouth	Stream Name	Tributary To	Wild Trout Limits	Site River-mile ●	Species	Catch	Length (inches)
Schuylkill	UNT to Locust Creek (RM 2.64)	Locust Creek	Headwaters to mouth	0.01	Brook Brown	11 7	2-7 2-8





County of Mouth	Stream Name	Tributary To	Wild Trout Limits	Site River-mile <span style="color: red;">●</span>	Species	Catch	Length (inches)
Schuylkill	UNT to Pine Creek (RM 2.99)	Pine Creek	Headwaters to mouth	0.09	Brook	18	2-7





County of Mouth	Stream Name	Tributary To	Wild Trout Limits	Site River-mile <span style="color: red;">●</span>	Species	Catch	Length (inches)
Somerset	UNT to South Fork Bens Creek (RM 3.94)	South Fork Bens Creek	Headwaters to mouth	0.00	Brown	9	2-3





County of Mouth	Stream Name	Tributary To	Wild Trout Limits	Site River-mile <span style="color: red;">●</span>	Species	Catch	Length (inches)
Tioga	UNT to Blue Run (RM 1.51)	Blue Run	Headwaters to mouth	0.01	Brook	46	2-8





County of Mouth	Stream Name	Tributary To	Wild Trout Limits	Site River-mile ●	Species	Catch	Length (inches)
Tioga	UNT to Mill Run (RM 0.89)	Mill Run	Headwaters to mouth	0.25	Brook	26	2-6



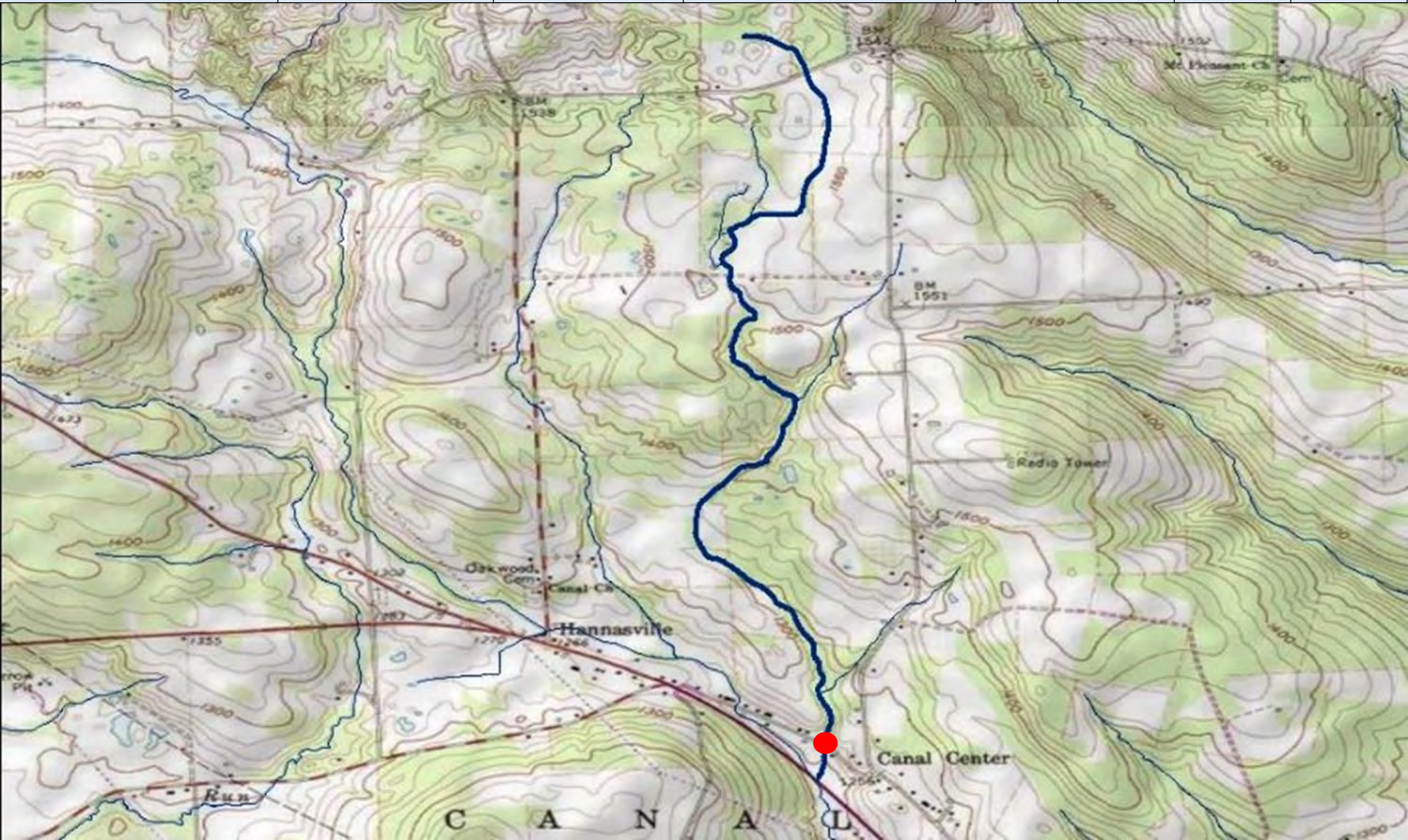


County of Mouth	Stream Name	Tributary To	Wild Trout Limits	Site River-mile <span style="color: red;">●</span>	Species	Catch	Length (inches)
Venango	UNT to Little Sugar Creek (RM 0.34)	Little Sugar Creek	Headwaters to mouth	0.11	Brown	3	4-5





County of Mouth	Stream Name	Tributary To	Wild Trout Limits	Site River-mile <span style="color: red;">●</span>	Species	Catch	Length (inches)
Venango	UNT to Warden Run (RM 4.17)	Warden Run	Headwaters to mouth	0.12	Brown	20	2-8



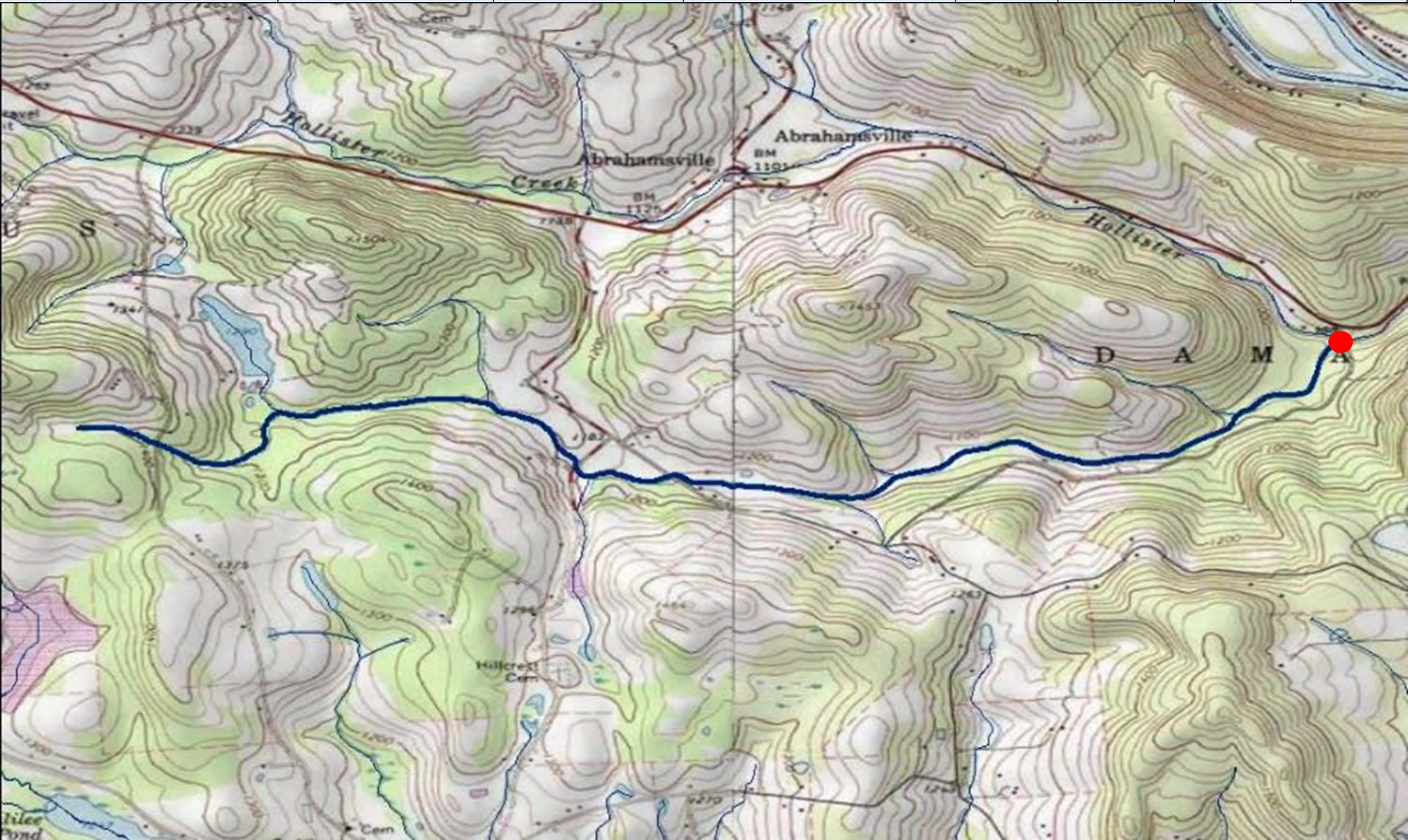


County of Mouth	Stream Name	Tributary To	Wild Trout Limits	Site River-mile <span style="color: red;">●</span>	Species	Catch	Length (inches)
Wayne	UNT to Big Brook (RM 6.19)	Big Brook	Headwaters to mouth	0.93	Brook	9	5-9





County of Mouth	Stream Name	Tributary To	Wild Trout Limits	Site River-mile <span style="color: red;">●</span>	Species	Catch	Length (inches)
Wayne	UNT to Hollister Creek (RM 1.32)	Hollister Creek	Headwaters to mouth	0.00	Brown Rainbow	8 5	1-5 1






County of Mouth	Stream Name	Tributary To	Wild Trout Limits	Site River-mile <span style="color: red;">●</span>	Species	Catch	Length (inches)
Wayne	UNT to North Branch Calkins Creek (RM 3.61)	North Branch Calkins Creek	Headwaters to mouth	0.00	Brown	3	2-5





County of Mouth	Stream Name	Tributary To	Wild Trout Limits	Site River-mile 	Species	Catch	Length (inches)
Wayne	UNT to North Branch Calkins Creek (RM 4.12)	North Branch Calkins Creek	Headwaters to mouth	0.03	Brown	6	2-3





County of Mouth	Stream Name	Tributary To	Wild Trout Limits	Site River-mile <span style="color: red;">●</span>	Species	Catch	Length (inches)
Wayne	UNT to West Branch Lackawaxen River (RM 7.83)	West Branch Lackawaxen River	Headwaters to mouth	0.00	Brook Brown	6 1	2-3 6

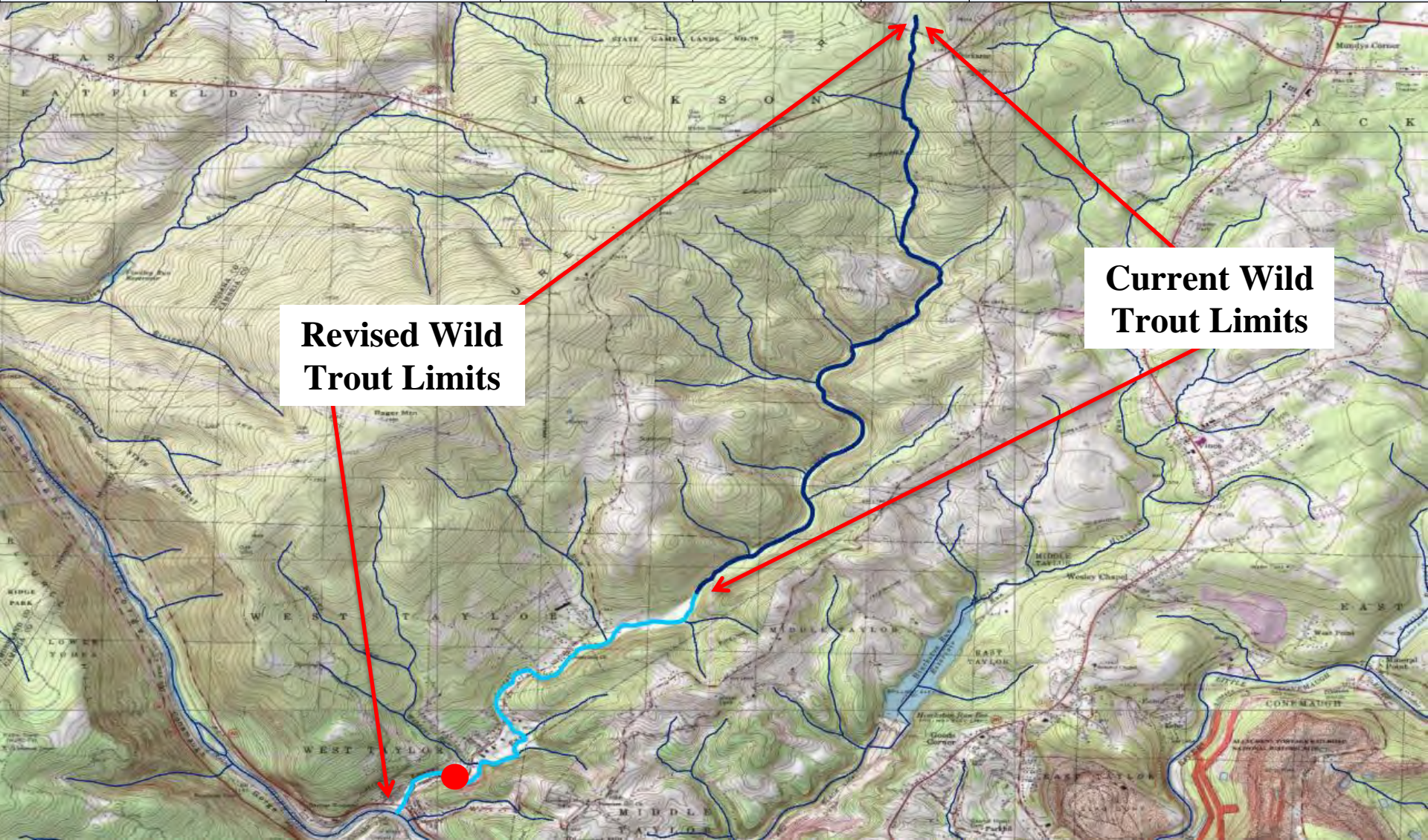




# Wild Trout Revisions

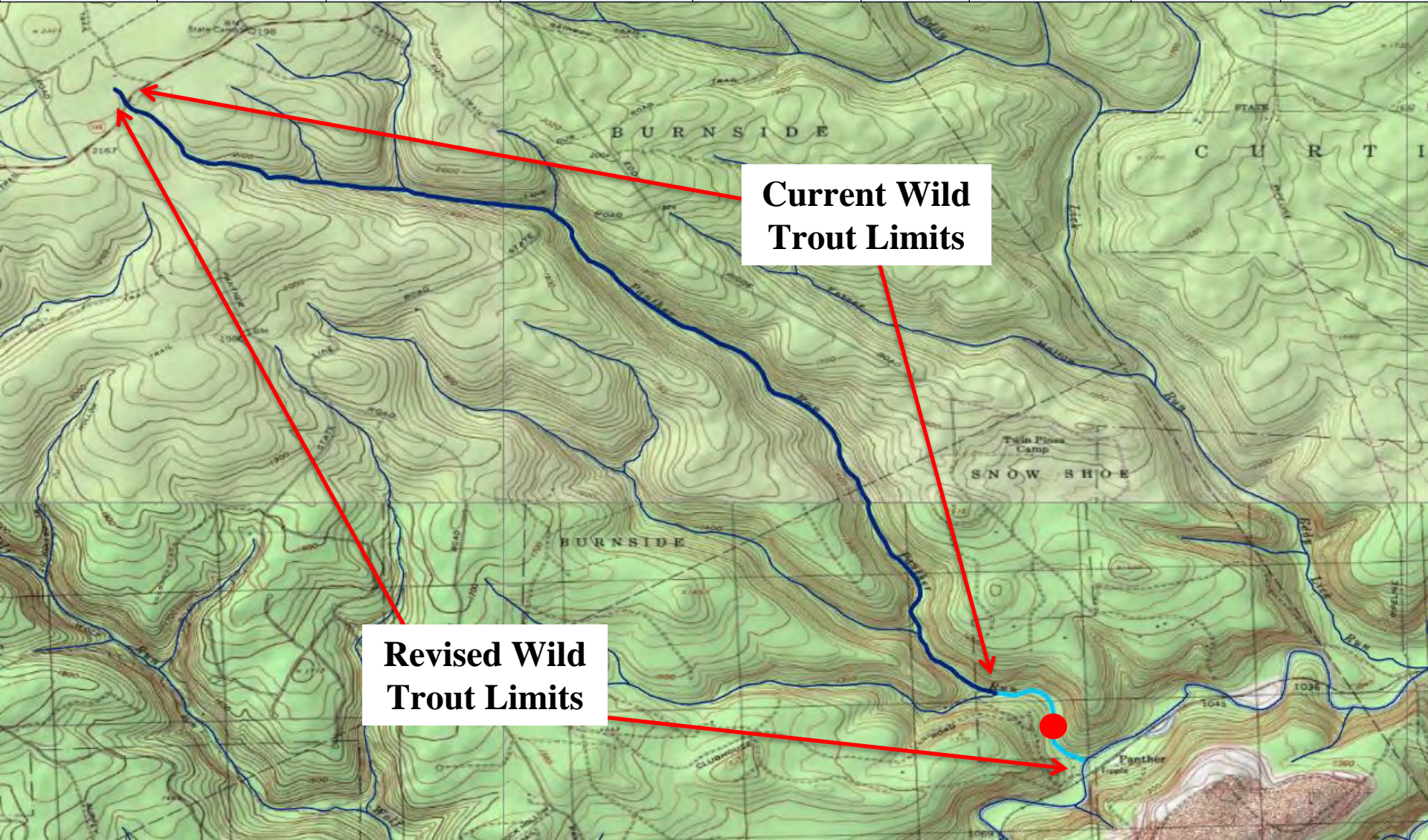


County of Mouth	Stream Name	Tributary To	Current Wild Trout Limits	Revised Wild Trout Limits	Site River-mile ●	Species	Catch	Length (inches)
Cambria	Laurel Run	Conemaugh River	Headwaters to 1.20 kilometers upstream of Red Run	Headwaters to mouth	0.53	Brook	5	2-6



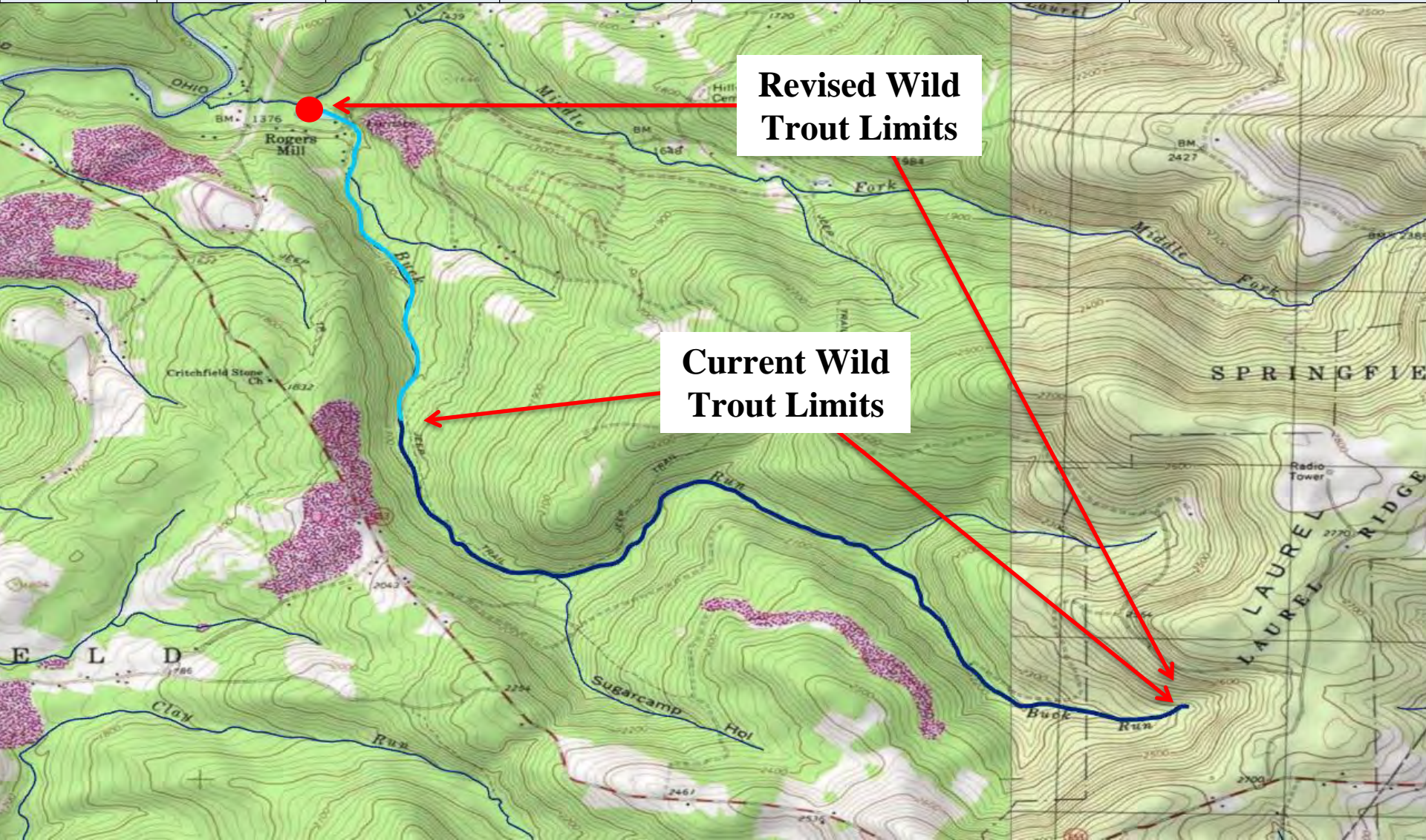


County of Mouth	Stream Name	Tributary To	Current Wild Trout Limits	Revised Wild Trout Limits	Site River-mile ●	Species	Catch	Length (inches)
Centre	Panther Run	Beech Creek	Headwaters to first UNT upstream of mouth	Headwaters to mouth	0.15	Brook	101	1-7



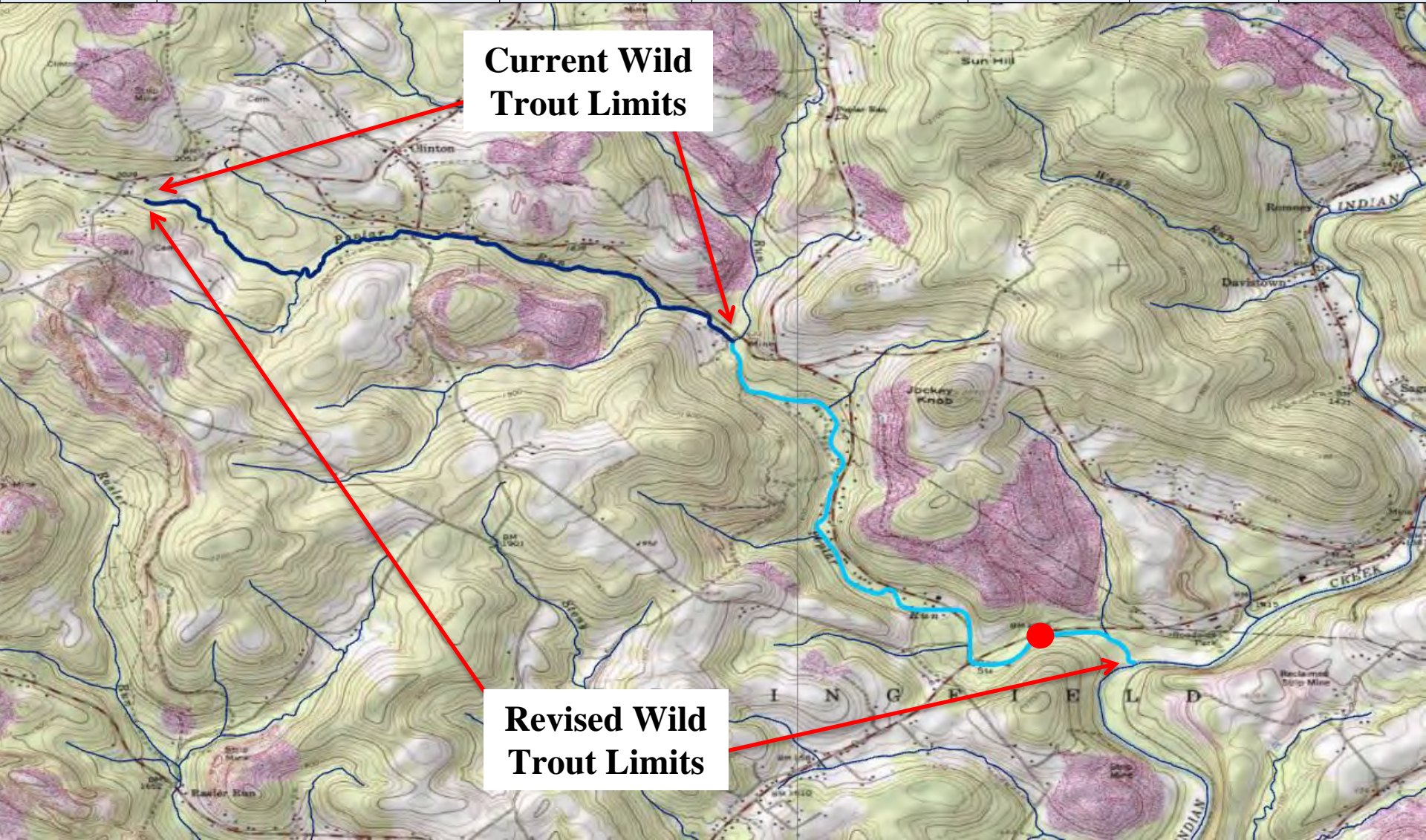


County of Mouth	Stream Name	Tributary To	Current Wild Trout Limits	Revised Wild Trout Limits	Site River-mile ●	Species	Catch	Length (inches)
Fayette	Buck Run	Laurel Run	Headwaters to 2300 meters upstream of mouth	Headwaters to mouth	0.00	Brook	14	2-6



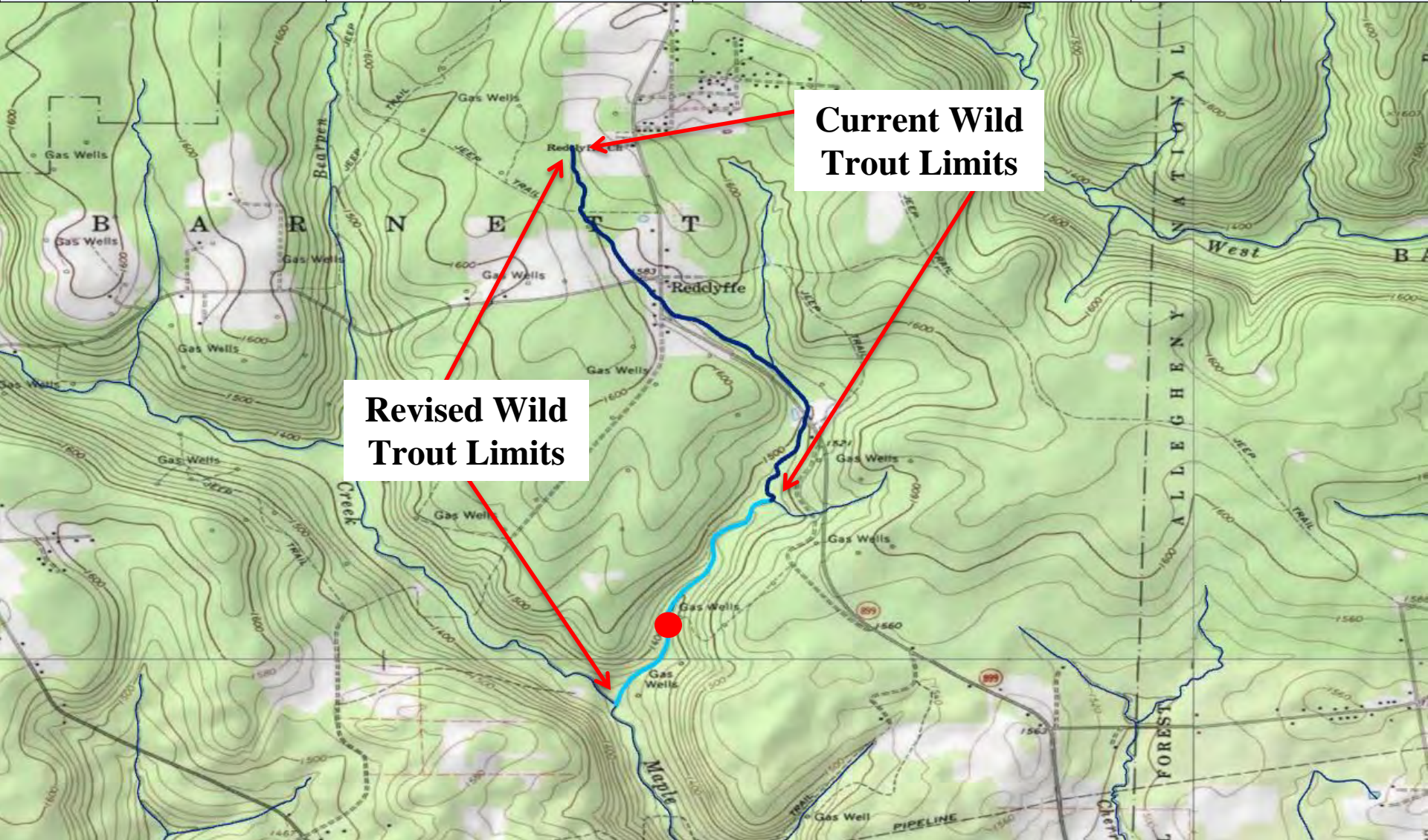


County of Mouth	Stream Name	Tributary To	Current Wild Trout Limits	Revised Wild Trout Limits	Site River-mile ●	Species	Catch	Length (inches)
Fayette	Poplar Run	Indian Creek	Headwaters to Newmeyer Run	Headwaters to mouth	0.42	Brown Rainbow	5 1	2-19 5





County of Mouth	Stream Name	Tributary To	Current Wild Trout Limits	Revised Wild Trout Limits	Site River-mile ●	Species	Catch	Length (inches)
Forest	UNT to Maple Creek (RM 2.65)	Maple Creek	Headwaters to UNT at RM 0.90	Headwaters to mouth	0.33	Brook	14	2-6



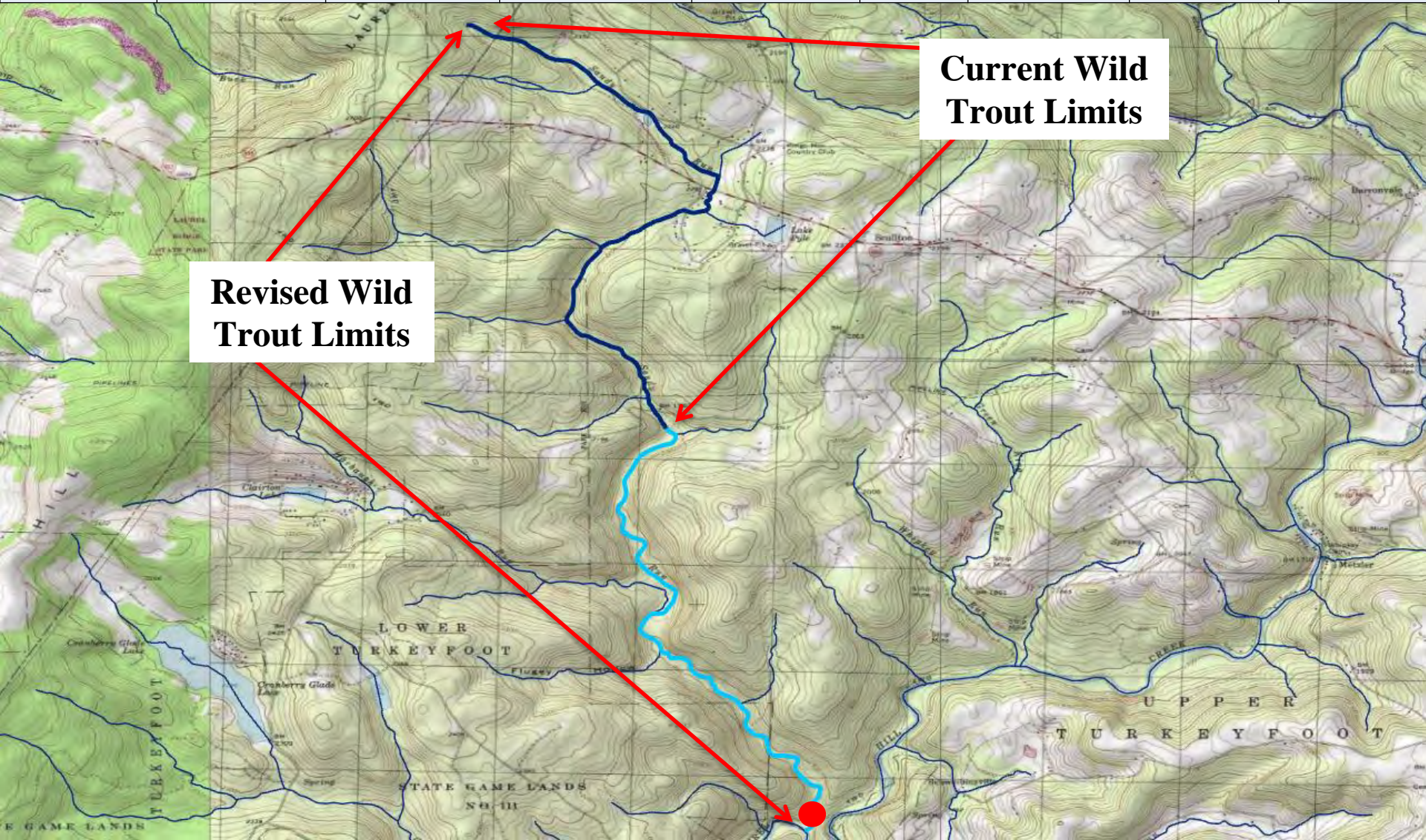


County of Mouth	Stream Name	Tributary To	Current Wild Trout Limits	Revised Wild Trout Limits	Site River-mile ●	Species	Catch	Length (inches)
Indiana	South Branch Blacklick Creek	Blacklick Creek	Headwaters to State Route 271 bridge	Headwaters to Coalpit Run	5.06	Brown	5	6-17





County of Mouth	Stream Name	Tributary To	Current Wild Trout Limits	Revised Wild Trout Limits	Site River-mile ●	Species	Catch	Length (inches)
Somerset	Sandy Run	Laurel Hill Creek	Headwaters to 200 meters downstream of T-455 bridge	Headwaters to mouth	0.07	Brook	21	2-8





County of Mouth	Stream Name	Tributary To	Current Wild Trout Limits	Revised Wild Trout Limits	Site River-mile ●	Species	Catch	Length (inches)
Venango	UNT to East Branch Sugar Creek (RM 2.63)	East Branch Sugar Creek	Headwaters to UNT at 1.60	Headwaters to mouth	0.00	Brown	11	4-9

