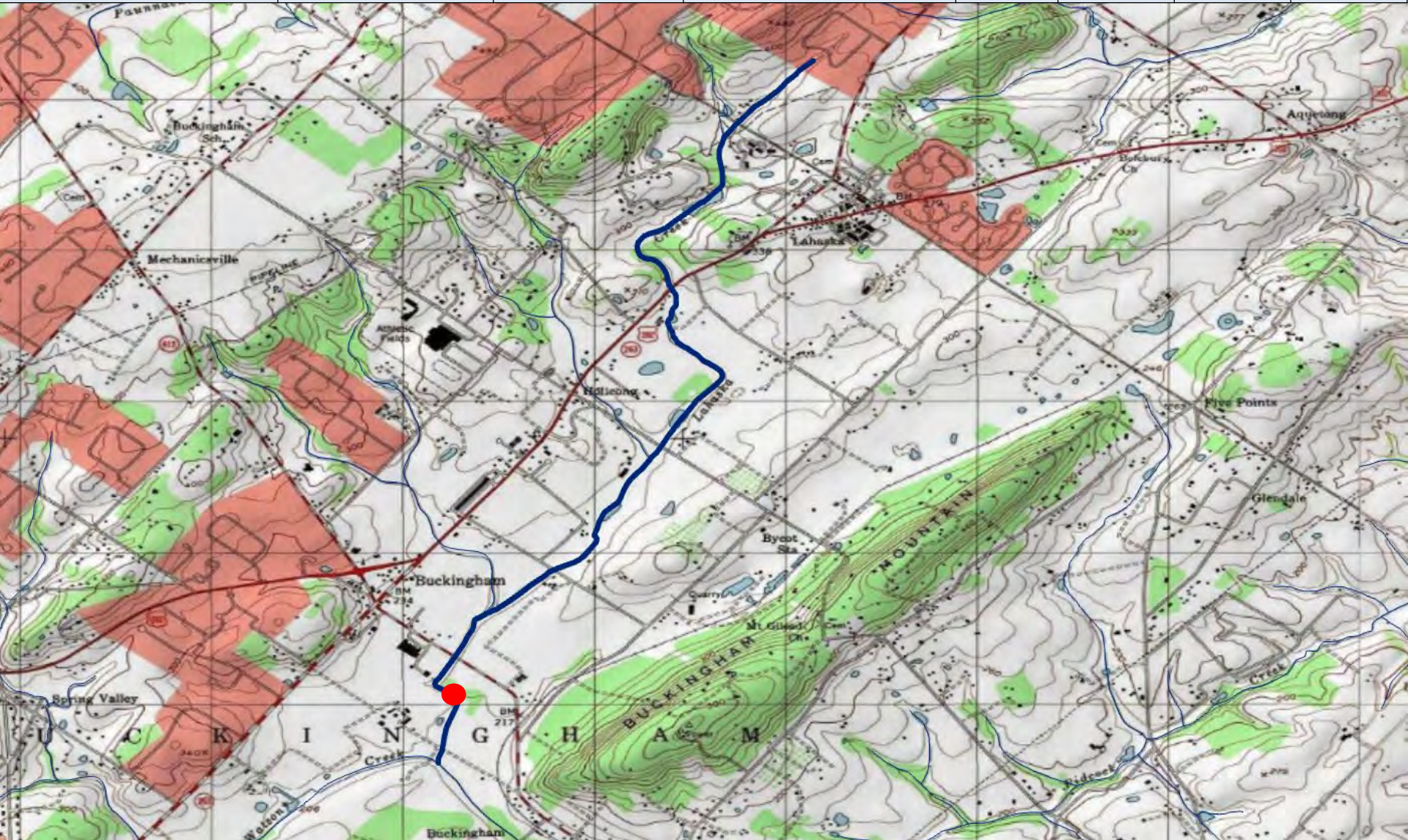


Wild Trout Additions

County of Mouth	Stream Name	Tributary To	Wild Trout Limits	Site River-mile ●	Species	Catch	Length (inches)
Bedford	UNT (RM 0.15) to UNT to Raystown Branch Juniata River (RM 39.23)	UNT to Raystown Branch Juniata River (RM 39.23)	Headwaters to mouth	0.01	Brown	3	2-6



County of Mouth	Stream Name	Tributary To	Wild Trout Limits	Site River-mile ●	Species	Catch	Length (inches)
Bucks	Lahaska Creek	Mill Creek	Headwaters to mouth	0.31	Brown	3	8-13



County of Mouth	Stream Name	Tributary To	Wild Trout Limits	Site River-mile ●	Species	Catch	Length (inches)
Cameron	UNT to Driftwood Branch Sinnemahoning Creek (RM 12.15)	Driftwood Branch Sinnemahoning Creek	Headwaters to mouth	0.01	Brook	12	2-4



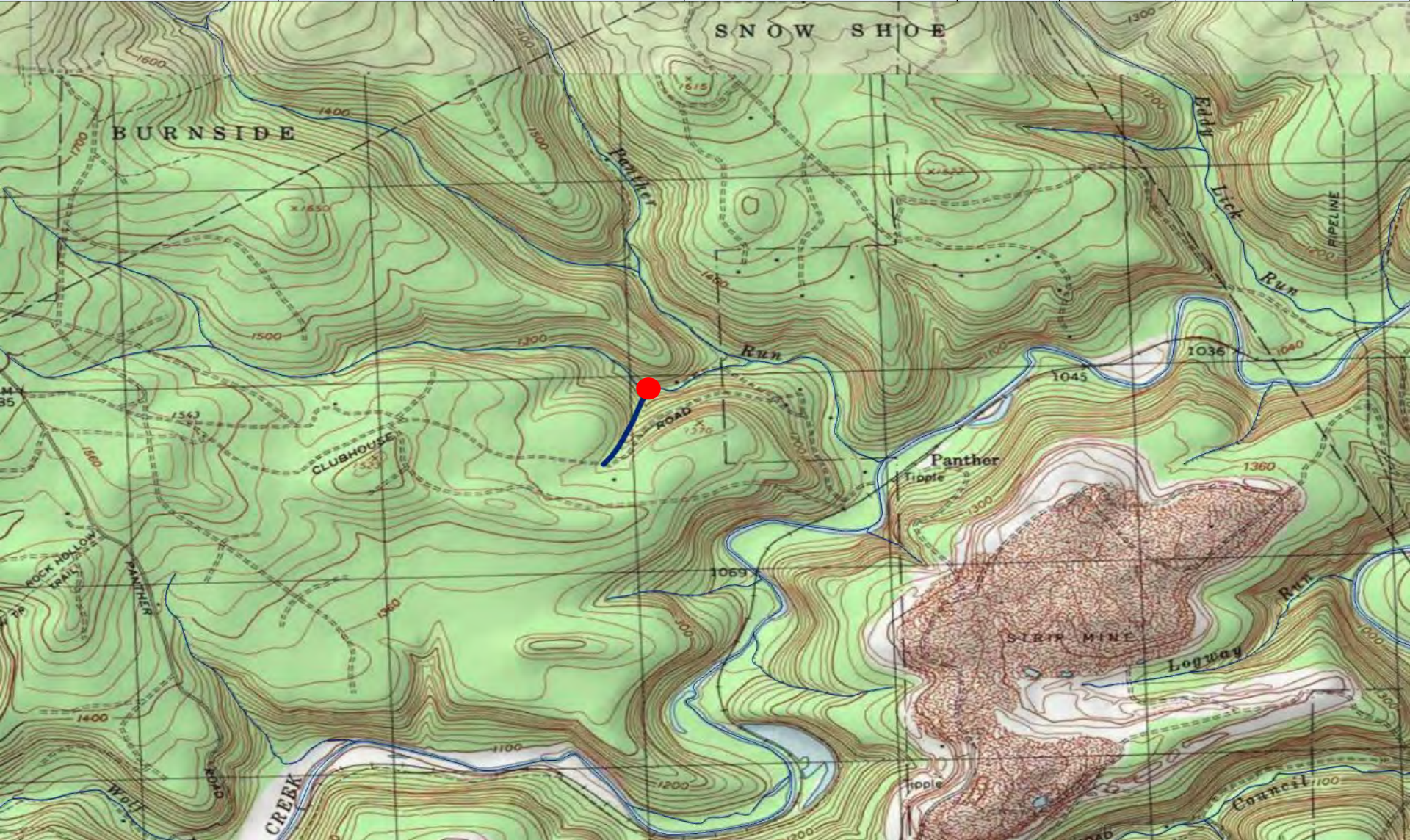
County of Mouth	Stream Name	Tributary To	Wild Trout Limits	Site River-mile ●	Species	Catch	Length (inches)
Centre	Beech Creek	Bald Eagle Creek	Headwaters to Sandy Run	25.35	Brook Brown	43 19	2-10 5-13



County of Mouth	Stream Name	Tributary To	Wild Trout Limits	Site River-mile ●	Species	Catch	Length (inches)
Centre	North Fork Beech Creek	Beech Creek	AMD treatment facility to mouth	0.04	Brook Brown	11 10	4-8 6-11



County of Mouth	Stream Name	Tributary To	Wild Trout Limits	Site River-mile ●	Species	Catch	Length (inches)
Centre	UNT (RM 0.27) to UNT to Panther Run (RM 0.57)	UNT to Panther Run (RM 0.57)	Headwaters to mouth	0.00	Brook	3	3-5



County of Mouth	Stream Name	Tributary To	Wild Trout Limits	Site River-mile ●	Species	Catch	Length (inches)
Centre	UNT to Buffalo Run (RM 10.92)	Buffalo Run	Headwaters to mouth	2.01	Brown	4	3-9



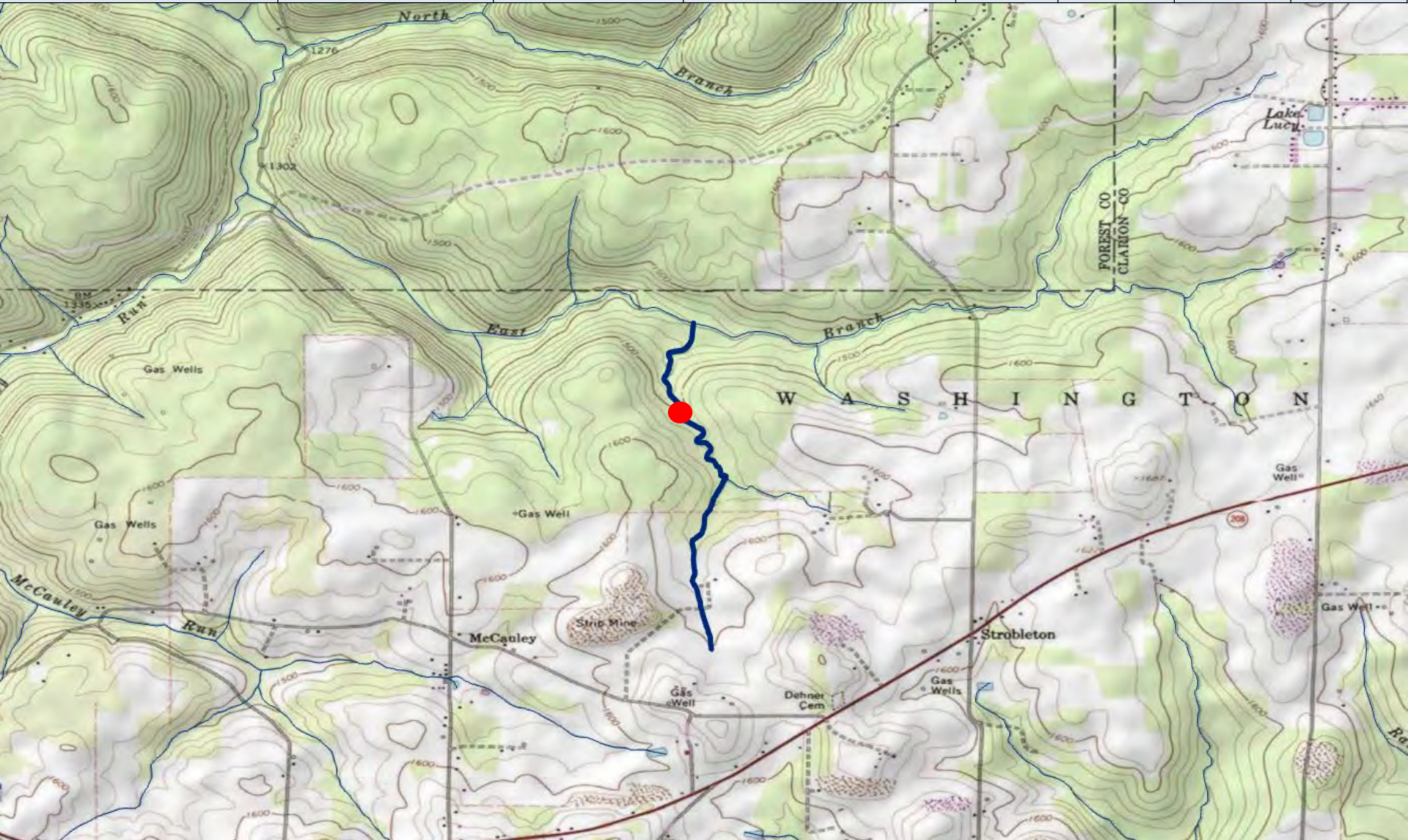
County of Mouth	Stream Name	Tributary To	Wild Trout Limits	Site River-mile ●	Species	Catch	Length (inches)
Centre	UNT to Panther Run (RM 0.57)	Panther Run	Headwaters to mouth	0.09	Brook	167	1-8



County of Mouth	Stream Name	Tributary To	Wild Trout Limits	Site River-mile ●	Species	Catch	Length (inches)
Centre	UNT to Penns Creek (RM 63.29)	Penns Creek	Headwaters to sink	1.53	Brook	91	2-9



County of Mouth	Stream Name	Tributary To	Wild Trout Limits	Site River-mile ●	Species	Catch	Length (inches)
Clarion	UNT to East Branch Hemlock Creek (RM 2.25)	East Branch Hemlock Creek	Headwaters to mouth	0.39	Brook	9	2-10



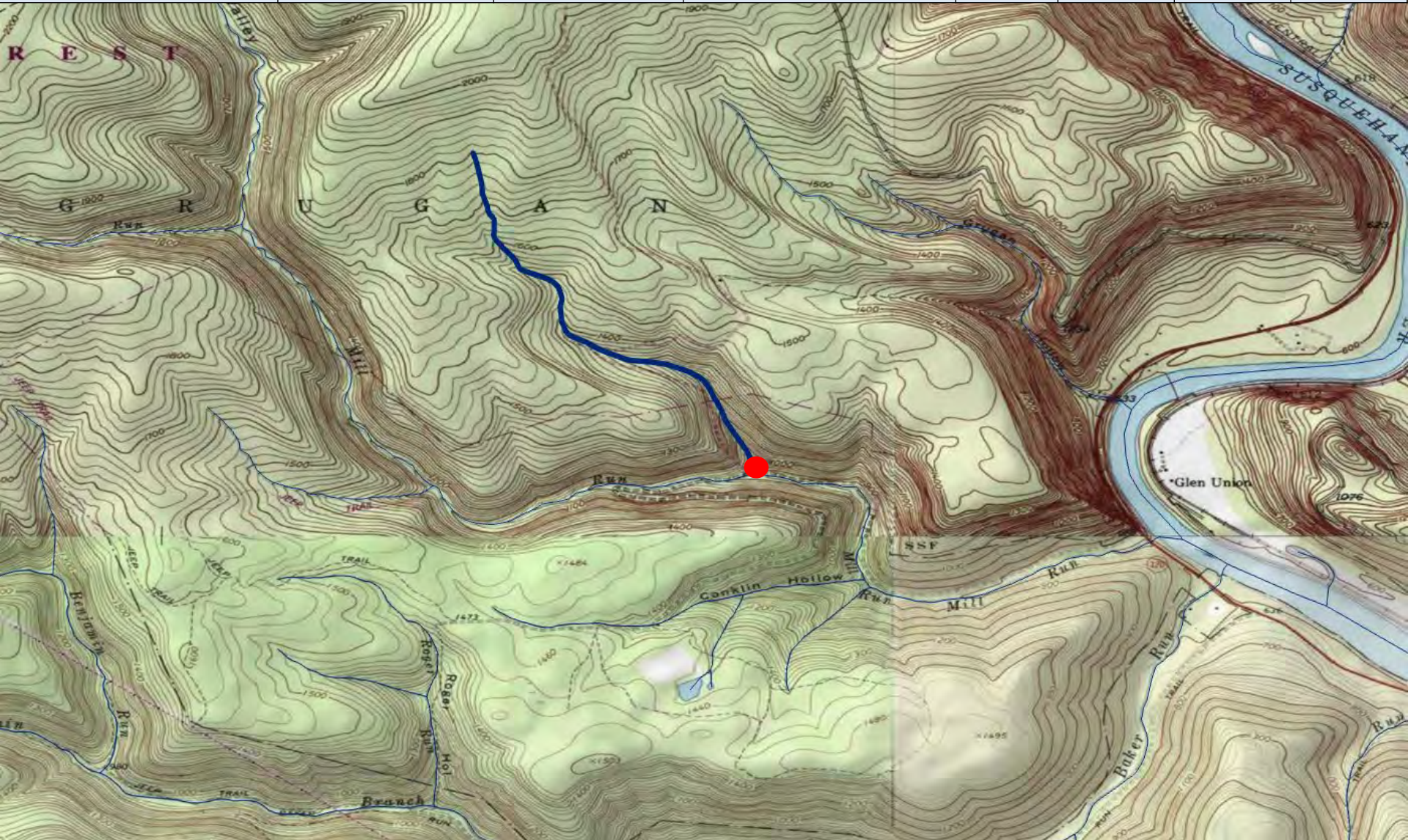
County of Mouth	Stream Name	Tributary To	Wild Trout Limits	Site River-mile ●	Species	Catch	Length (inches)
Clearfield	Blue Run	Clearfield Creek	Headwaters to UNT at RM 0.31	0.31	Brook	13	1-7



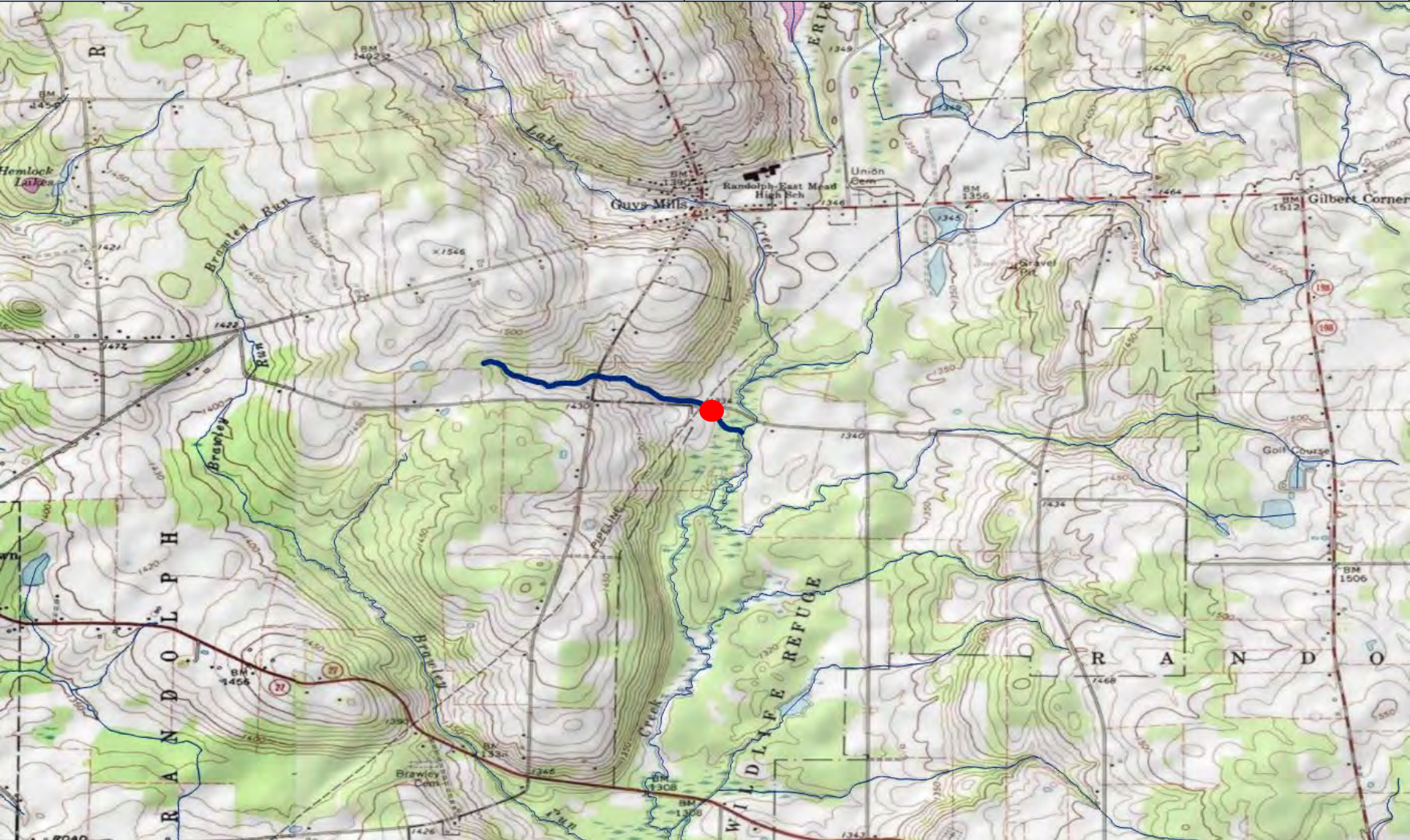
County of Mouth	Stream Name	Tributary To	Wild Trout Limits	Site River-mile ●	Species	Catch	Length (inches)
Clearfield	UNT to Muddy Run (RM 1.01)	Muddy Run	Headwaters to mouth	0.03	Brook Brown	60 2	1-8 5



County of Mouth	Stream Name	Tributary To	Wild Trout Limits	Site River-mile ●	Species	Catch	Length (inches)
Clinton	UNT to Mill Run (RM 1.63)	Mill Run	Headwaters to mouth	0.00	Brook	10	2-7



County of Mouth	Stream Name	Tributary To	Wild Trout Limits	Site River-mile ●	Species	Catch	Length (inches)
Crawford	UNT to Lake Creek (RM 14.74)	Lake Creek	Headwaters to mouth	0.10	Brook	4	2-8



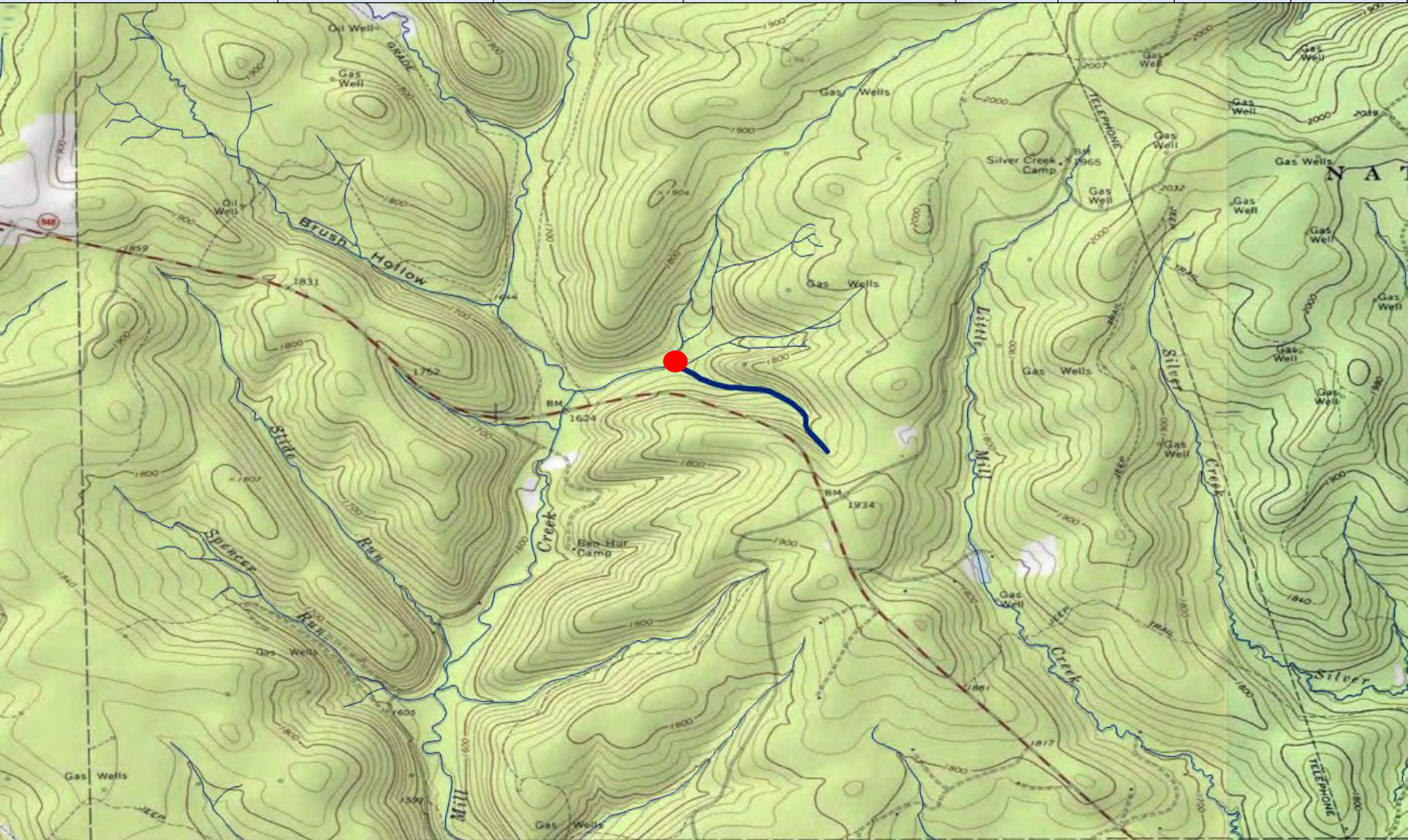
County of Mouth	Stream Name	Tributary To	Wild Trout Limits	Site River-mile ●	Species	Catch	Length (inches)
Elk	Cherry Run	Big Mill Creek	Headwaters to mouth	0.06	Brook	49	1-4




County of Mouth	Stream Name	Tributary To	Wild Trout Limits	Site River-mile ●	Species	Catch	Length (inches)
Elk	Ellithorpe Run	Big Mill Creek	Headwaters to mouth	0.06	Brook	15	2-8



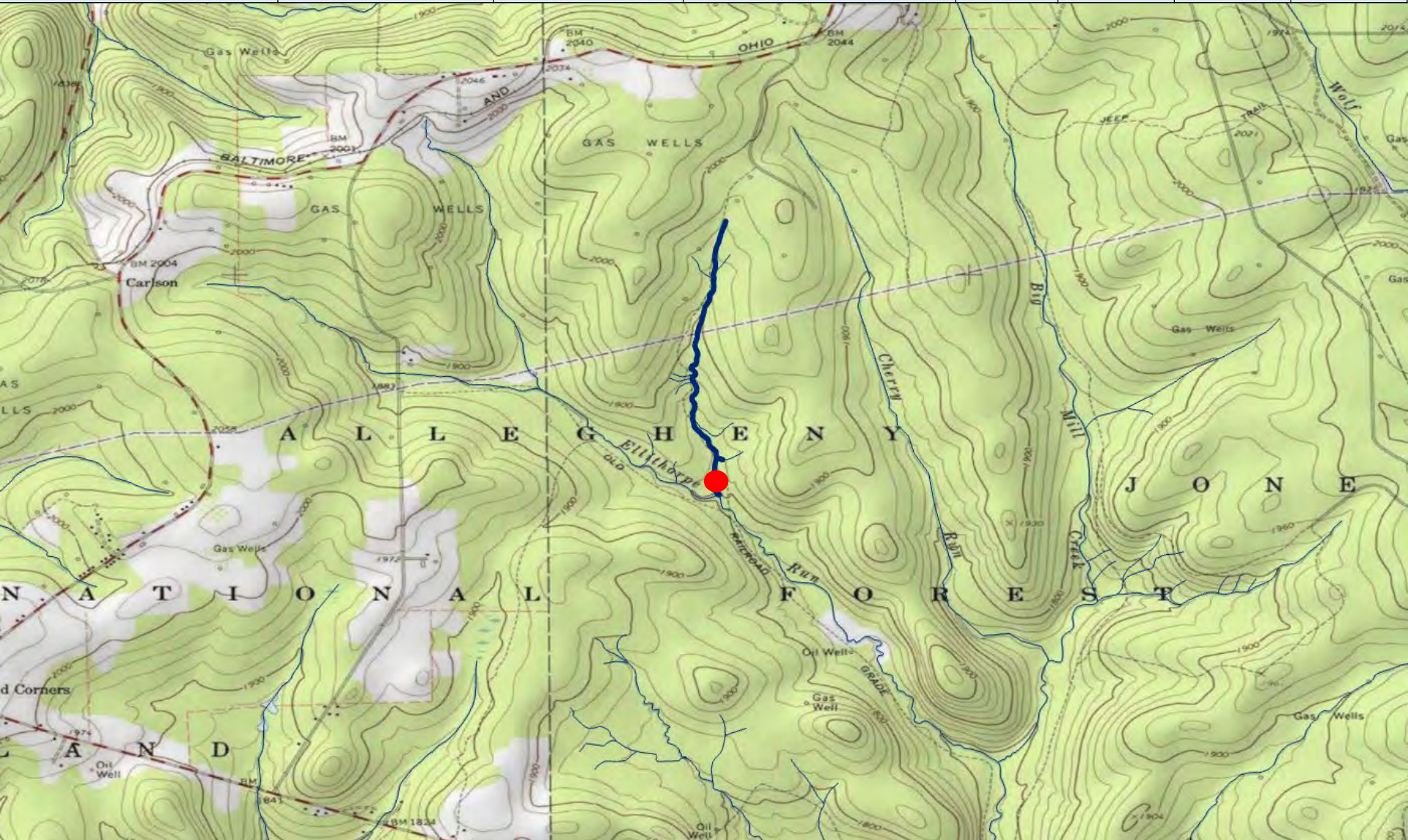
County of Mouth	Stream Name	Tributary To	Wild Trout Limits	Site River-mile ●	Species	Catch	Length (inches)
Elk	UNT (RM 0.30) to UNT to Big Mill Creek (RM 12.32)	UNT to Big Mill Creek (RM 12.32)	Headwaters to mouth	0.01	Brook	14	2-7



County of Mouth	Stream Name	Tributary To	Wild Trout Limits	Site River-mile 	Species	Catch	Length (inches)
Elk	UNT (RM 0.44) to UNT to Hoffman Run (RM 0.53)	UNT to Hoffman Run (RM 0.53)	Headwaters to mouth	0.01	Brook	27	2-5



County of Mouth	Stream Name	Tributary To	Wild Trout Limits	Site River-mile ●	Species	Catch	Length (inches)
Elk	UNT to Ellithorpe Run (RM 1.58)	Ellithorpe Run	Headwaters to mouth	0.02	Brook	5	2-4



County of Mouth	Stream Name	Tributary To	Wild Trout Limits	Site River-mile ●	Species	Catch	Length (inches)
Elk	UNT to Hoffman Run (RM 4.17)	Hoffman Run	Headwaters to mouth	0.02	Brook	26	2-6



County of Mouth	Stream Name	Tributary To	Wild Trout Limits	Site River-mile ●	Species	Catch	Length (inches)
Huntingdon	Hill Valley Creek	Juniata River	Headwaters to mouth	0.07	Brown	9	2-11



County of Mouth	Stream Name	Tributary To	Wild Trout Limits	Site River-mile ●	Species	Catch	Length (inches)
Huntingdon	UNT (RM 0.11) to UNT to George Creek (RM 3.95)	UNT to George Creek (RM 3.95)	Headwaters to mouth	0.36	Brook Brown	2 4	7-8 3-7



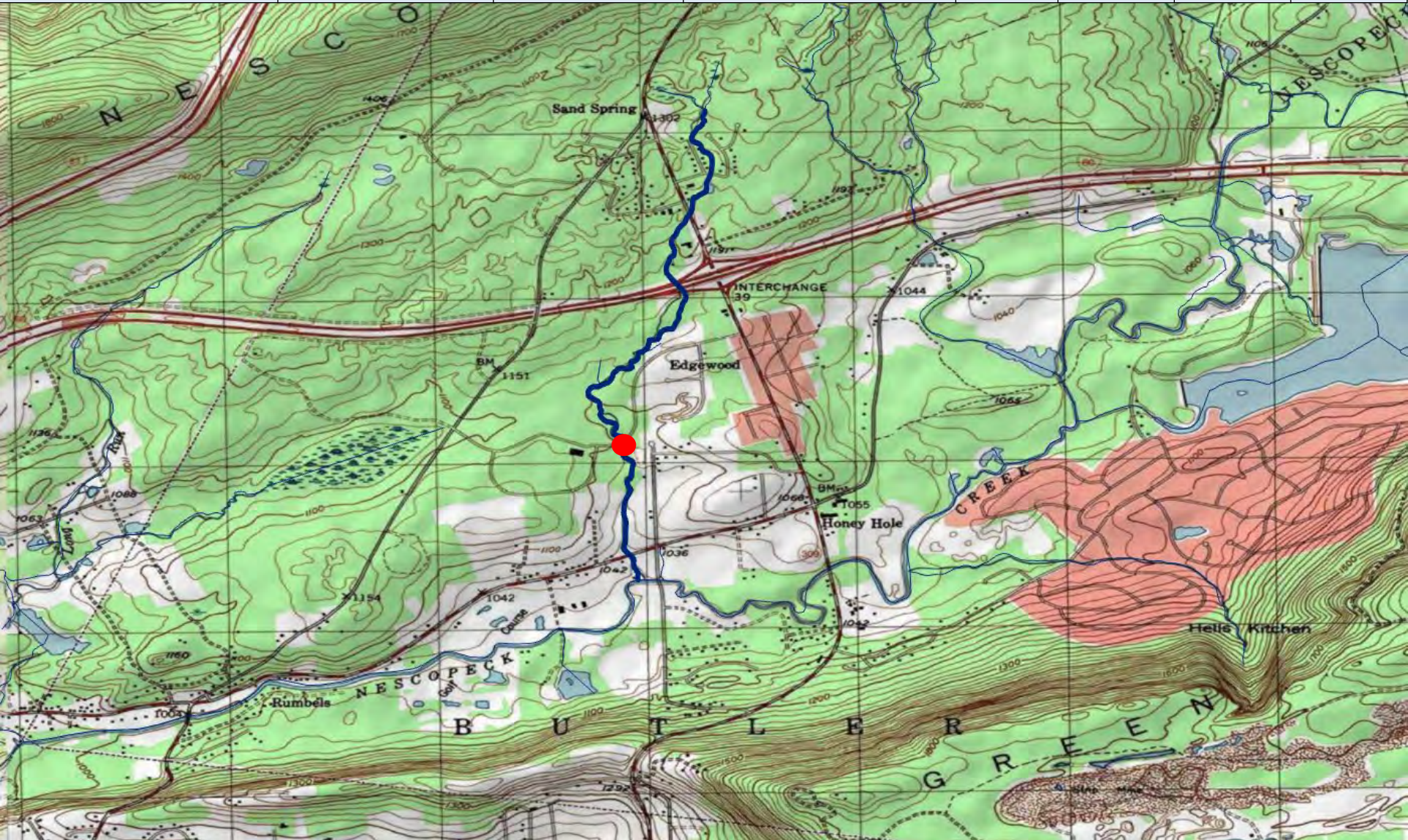
County of Mouth	Stream Name	Tributary To	Wild Trout Limits	Site River-mile ●	Species	Catch	Length (inches)
Indiana	UNT to Dixon Run (RM 4.36)	Dixon Run	Headwaters to mouth	0.00	Brown	4	3-7



County of Mouth	Stream Name	Tributary To	Wild Trout Limits	Site River-mile ●	Species	Catch	Length (inches)
Lancaster	Cocalico Creek	Conestoga River	Headwaters to Lancaster/ Lebanon County Line	26.50	Brook	24	1-7



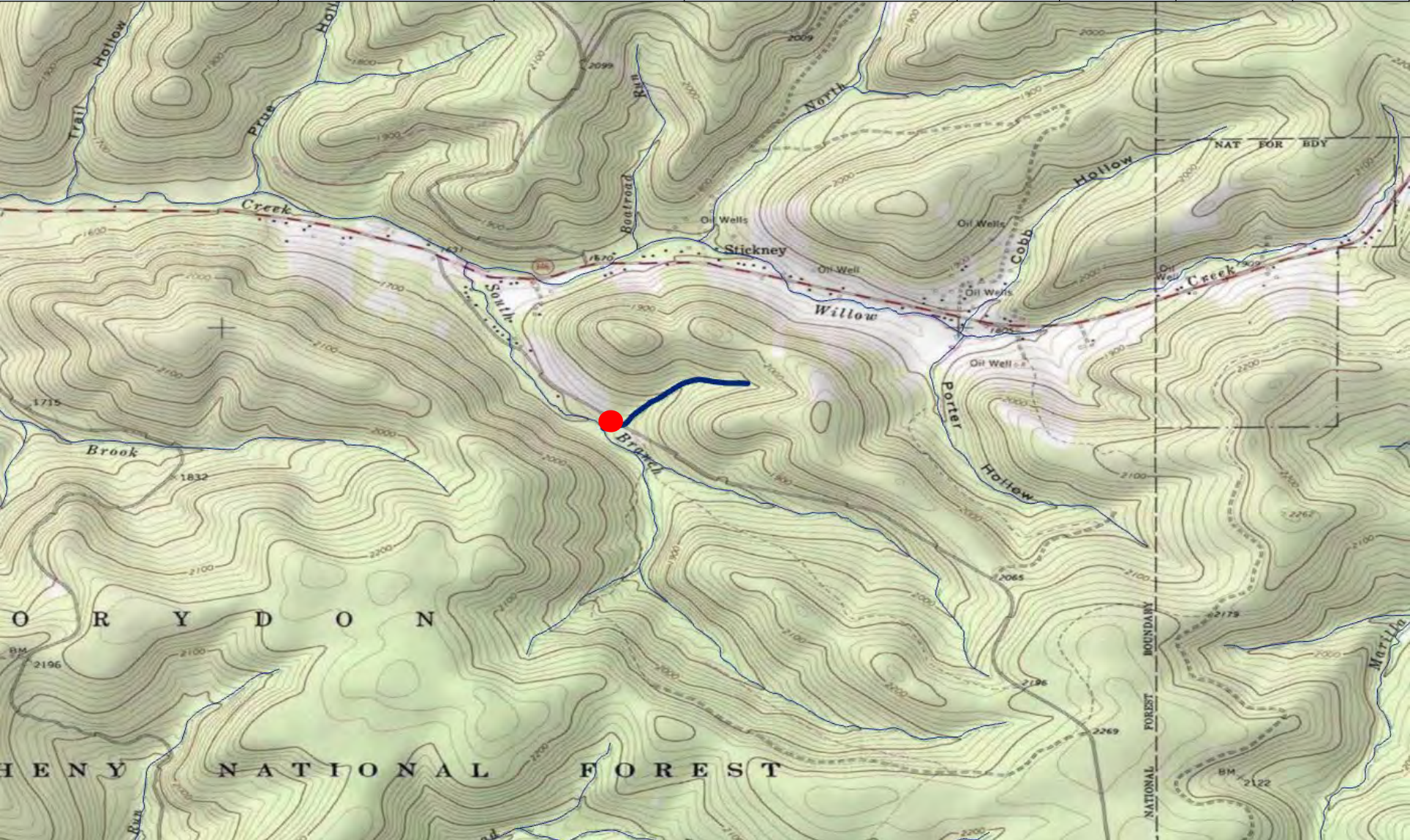
County of Mouth	Stream Name	Tributary To	Wild Trout Limits	Site River-mile ●	Species	Catch	Length (inches)
Luzerne	UNT to Nescopeck Creek (RM 23.95; 10)	Nescopeck Creek	Headwaters to mouth	0.49	Brook	4	2-7



County of Mouth	Stream Name	Tributary To	Wild Trout Limits	Site River-mile ●	Species	Catch	Length (inches)
McKean	UNT to North Branch Willow Creek (RM 0.78)	North Branch Willow Creek	Headwaters to mouth	0.02	Brook Brown	6 1	2-8 4



County of Mouth	Stream Name	Tributary To	Wild Trout Limits	Site River-mile ●	Species	Catch	Length (inches)
McKean	UNT to South Branch Willow Creek (RM 0.83)	South Branch Willow Creek	Headwaters to mouth	0.01	Brook	5	2-3



County of Mouth	Stream Name	Tributary To	Wild Trout Limits	Site River-mile ●	Species	Catch	Length (inches)
Mifflin	Bear Gap Run	Treaster Run	Headwaters to mouth	0.01	Brook Brown	42 1	2-7 4



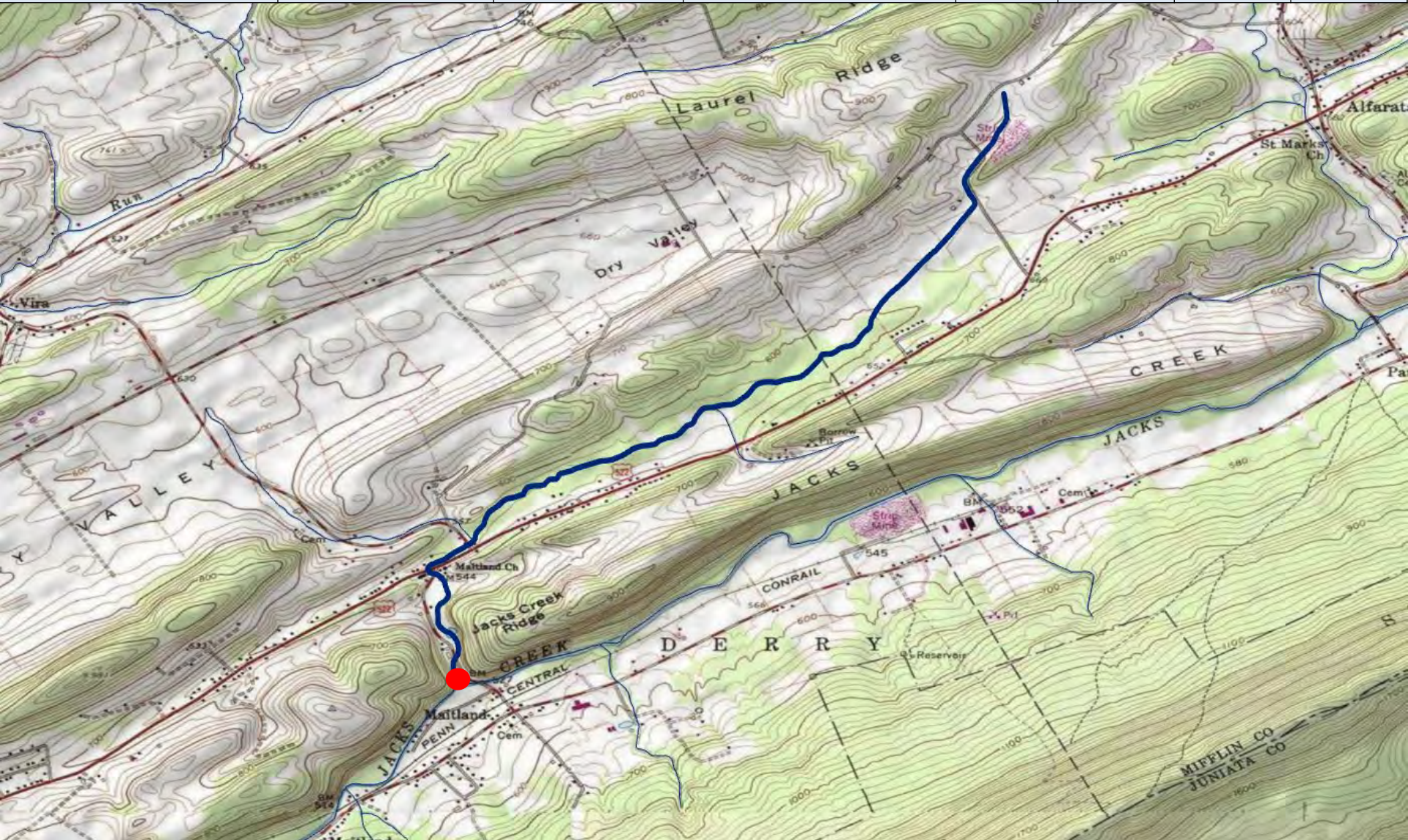
County of Mouth	Stream Name	Tributary To	Wild Trout Limits	Site River-mile ●	Species	Catch	Length (inches)
Mifflin	UNT to Hungry Run (RM 1.73)	Hungry Run	Headwaters to mouth	0.00	Brown	7	3-6



County of Mouth	Stream Name	Tributary To	Wild Trout Limits	Site River-mile ●	Species	Catch	Length (inches)
Mifflin	UNT to Hungry Run (RM 3.86)	Hungry Run	Headwaters to mouth	0.00	Brown	35	3-12



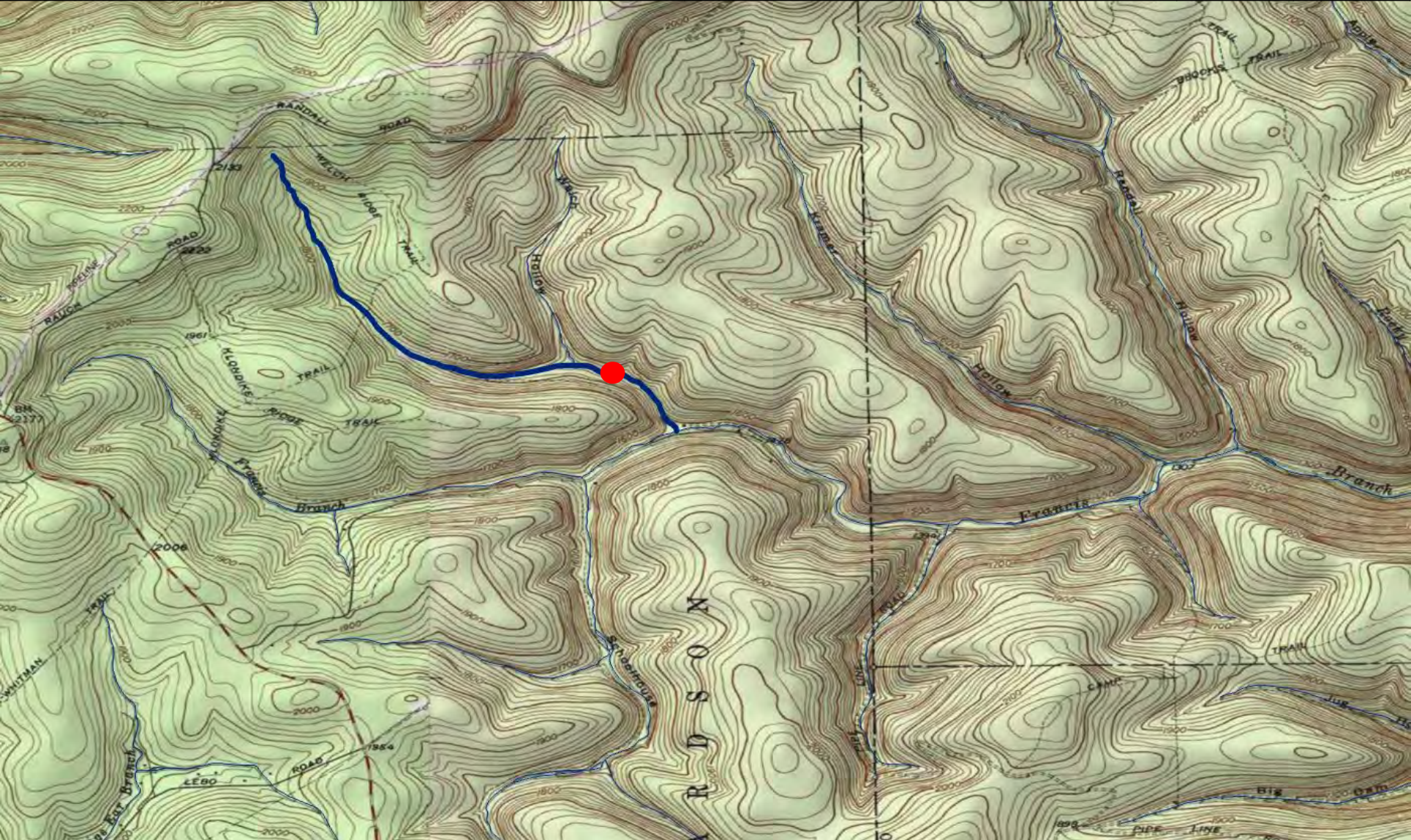
County of Mouth	Stream Name	Tributary To	Wild Trout Limits	Site River-mile ●	Species	Catch	Length (inches)
Mifflin	UNT to Jacks Creek (RM 5.12)	Jacks Creek	Headwaters to mouth	0.00	Brown	32	1-15



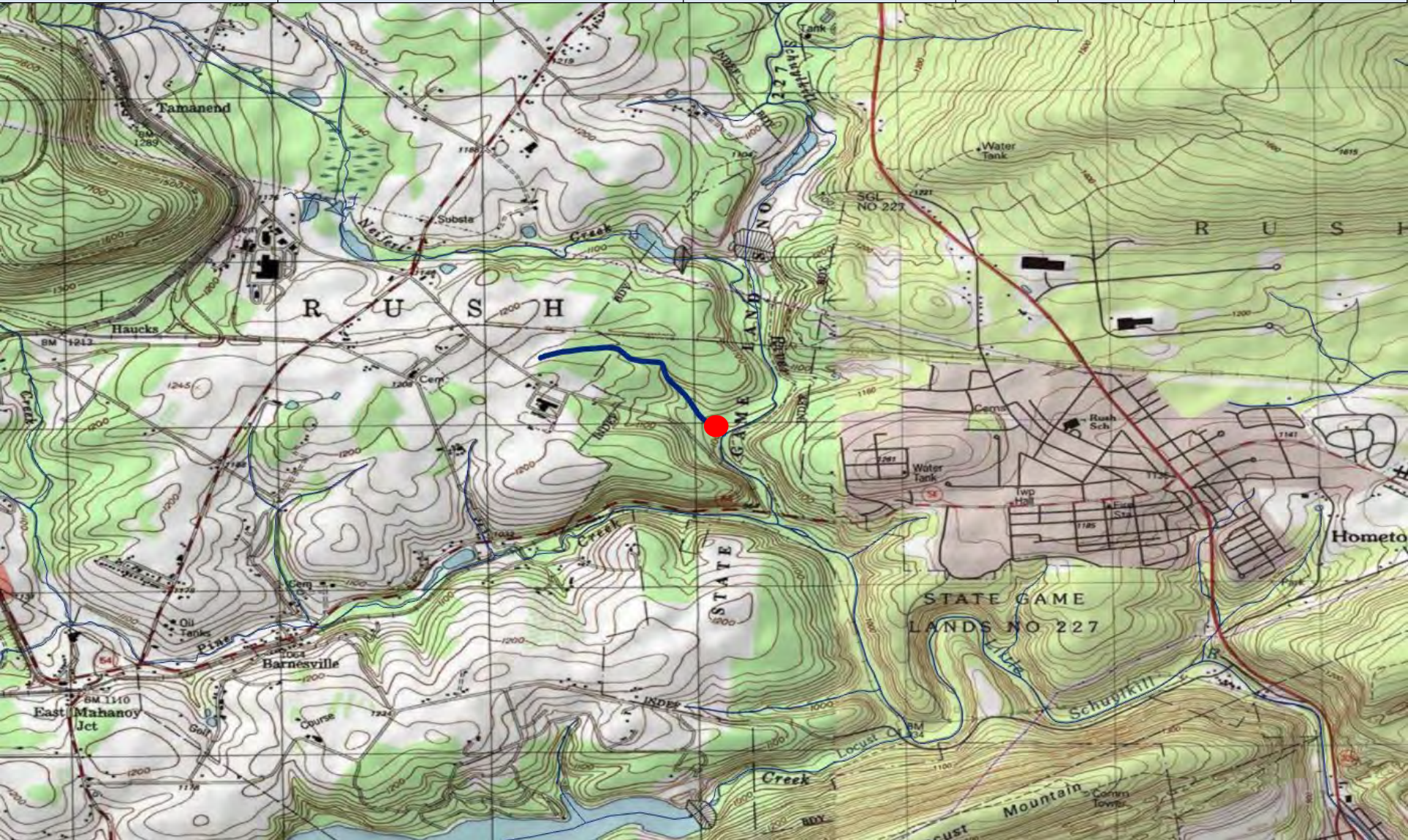
County of Mouth	Stream Name	Tributary To	Wild Trout Limits	Site River-mile ●	Species	Catch	Length (inches)
Mifflin	UNT to Treaster Run (RM 5.58)	Treaster Run	Headwaters to mouth	0.01	Brook Brown	74 11	1-7 1-7



County of Mouth	Stream Name	Tributary To	Wild Trout Limits	Site River-mile ●	Species	Catch	Length (inches)
Potter	UNT to Francis Branch (RM 3.44)	Francis Branch	Headwaters to mouth	0.21	Brook Brown	126 25	2-7 3-6



County of Mouth	Stream Name	Tributary To	Wild Trout Limits	Site River-mile ●	Species	Catch	Length (inches)
Schuylkill	UNT to Little Schuylkill River (RM 27.25)	Little Schuylkill River	Headwaters to mouth	0.01	Brook	37	2-6



County of Mouth	Stream Name	Tributary To	Wild Trout Limits	Site River-mile ●	Species	Catch	Length (inches)
Schuylkill	UNT to Swope Valley Run (RM 1.30)	Swope Valley Run	Headwaters to mouth	0.31	Brook	20	2-8



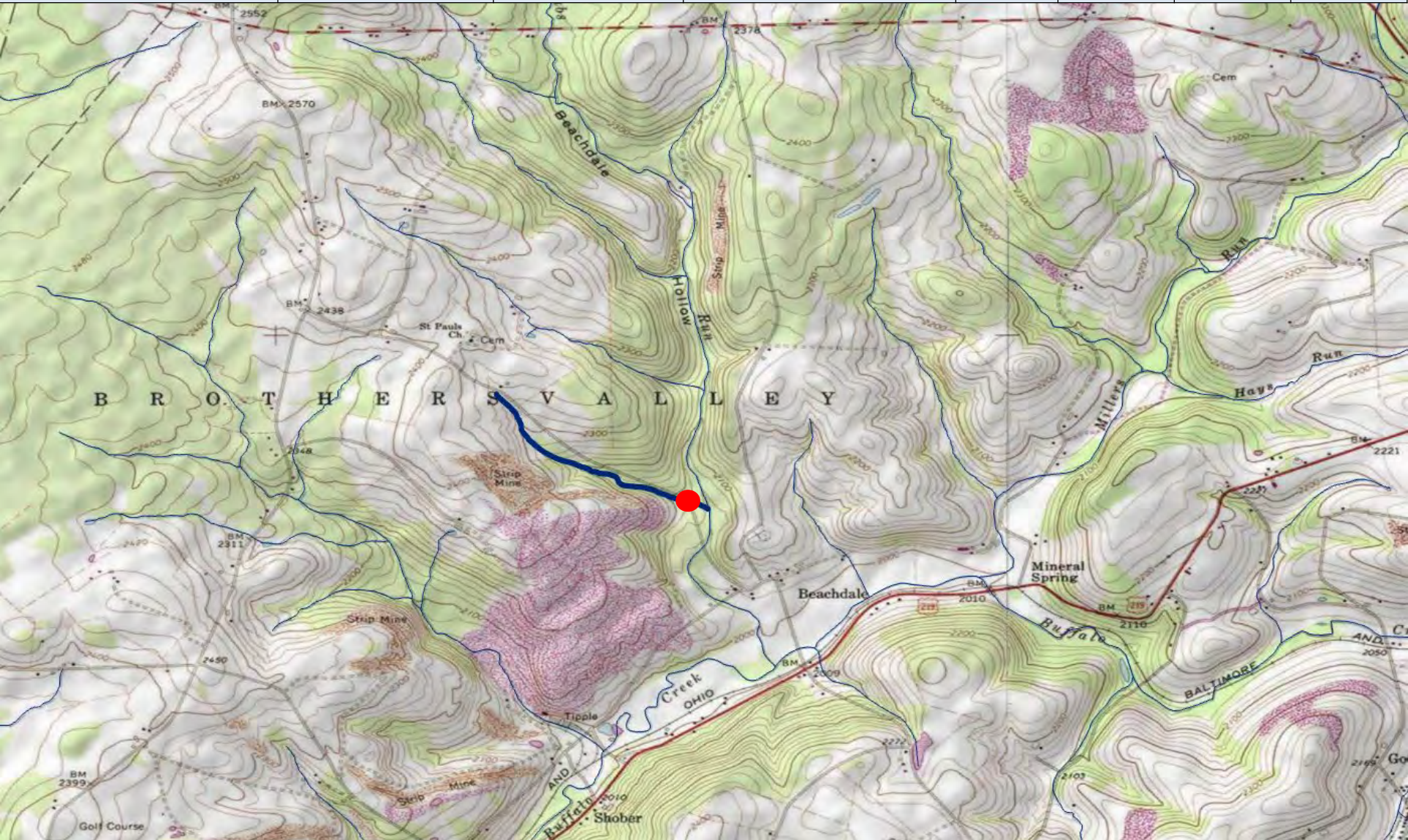
County of Mouth	Stream Name	Tributary To	Wild Trout Limits	Site River-mile ●	Species	Catch	Length (inches)
Schuylkill	UNT to Swope Valley Run (RM 1.81)	Swope Valley Run	Headwaters to mouth	0.25	Brook Brown	4 2	2-5 2



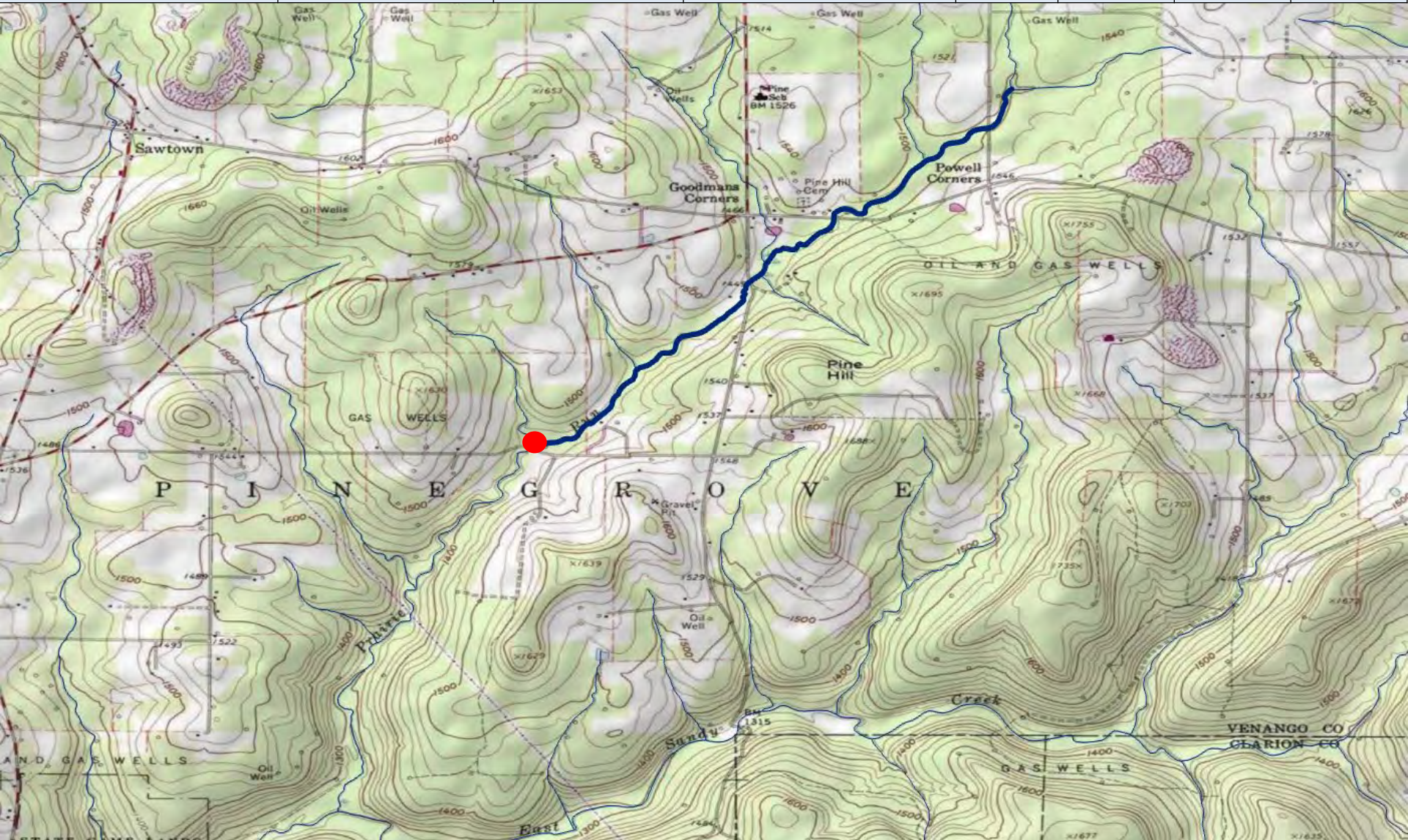
County of Mouth	Stream Name	Tributary To	Wild Trout Limits	Site River-mile ●	Species	Catch	Length (inches)
Somerset	Braddocks Run	Youghiogheny River Lake	Headwaters to mouth	0.26	Brook Brown	9 3	2-9 6-7



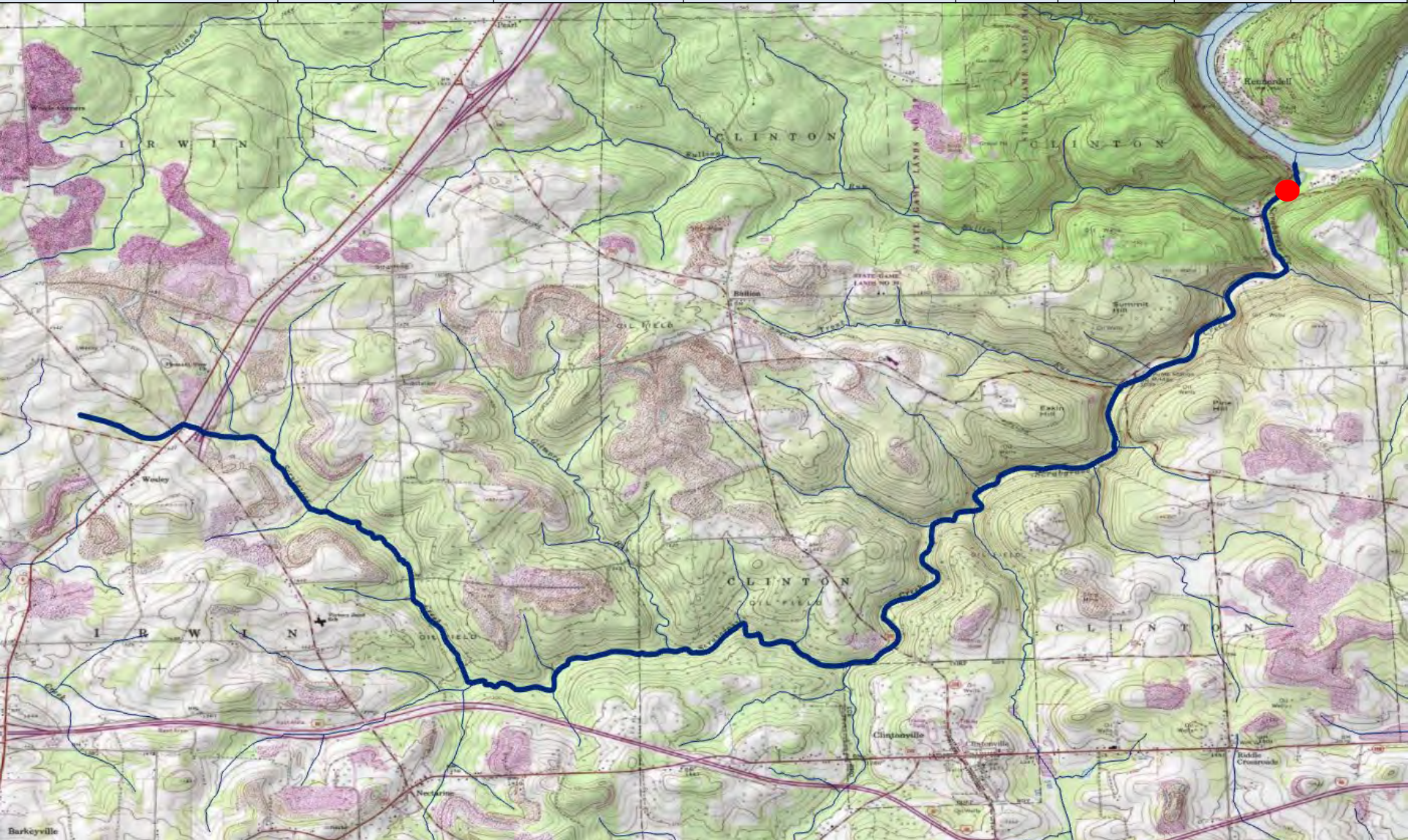
County of Mouth	Stream Name	Tributary To	Wild Trout Limits	Site River-mile ●	Species	Catch	Length (inches)
Somerset	UNT to Tubs Run (RM 0.74)	Tubs Run	Headwaters to mouth	0.07	Brook	6	5-8



County of Mouth	Stream Name	Tributary To	Wild Trout Limits	Site River-mile ●	Species	Catch	Length (inches)
Venango	Prairie Run	East Sandy Creek	Headwaters to Keister Road bridge	1.79	Brook	3	2-6



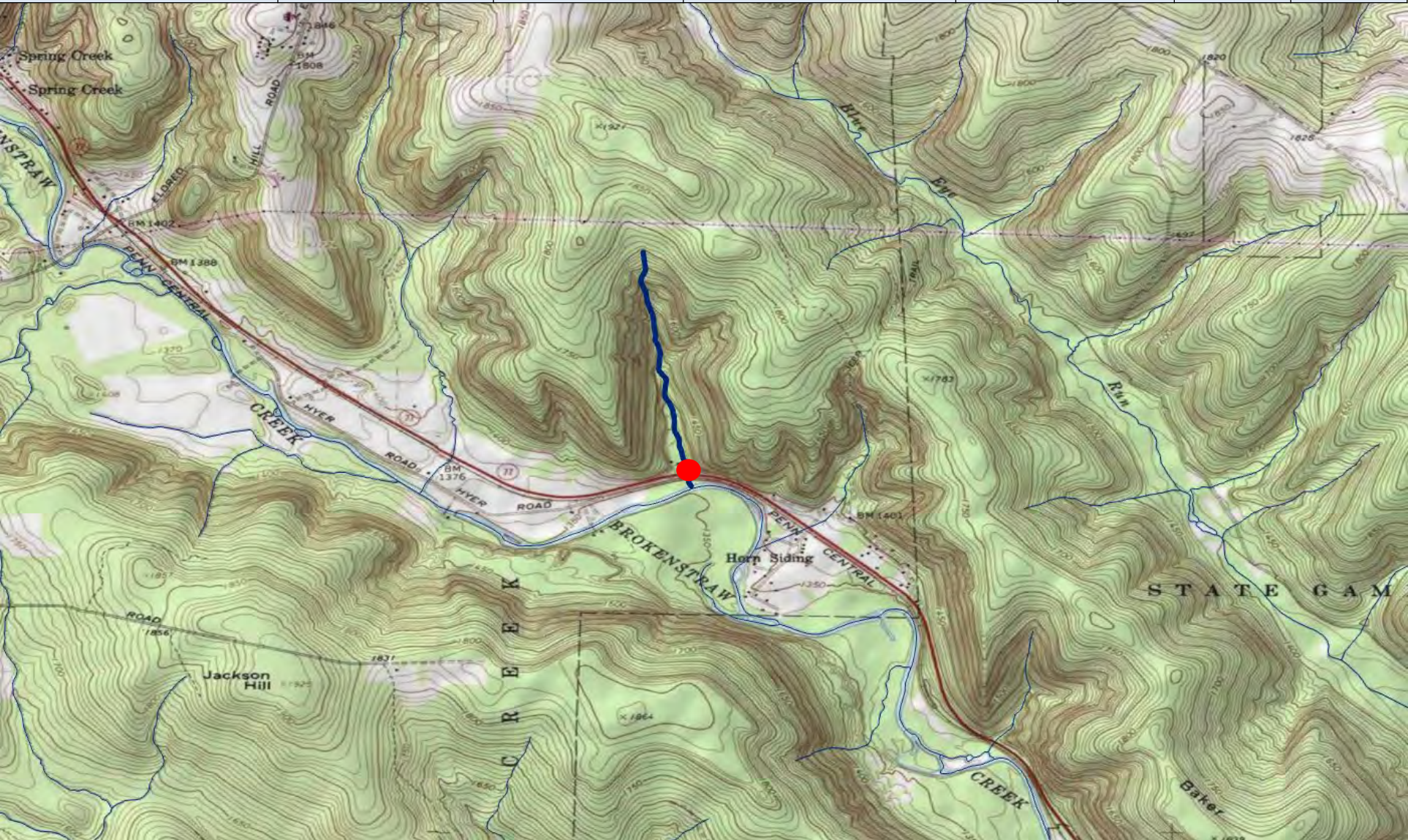
County of Mouth	Stream Name	Tributary To	Wild Trout Limits	Site River-mile ●	Species	Catch	Length (inches)
Venango	Scrubgrass Creek	Allegheny River	Headwaters to mouth	0.23	Brown	11	5-15



County of Mouth	Stream Name	Tributary To	Wild Trout Limits	Site River-mile ●	Species	Catch	Length (inches)
Venango	UNT to Allegheny River (RM 112.58)	Allegheny River	Headwaters to mouth	0.00	Brook Brown	19 1	2-6 2



County of Mouth	Stream Name	Tributary To	Wild Trout Limits	Site River-mile ●	Species	Catch	Length (inches)
Warren	UNT to Brokenstraw Creek (RM 17.32)	Brokenstraw Creek	Headwaters to mouth	0.06	Brook Brown	1 5	5 2-5



County of Mouth	Stream Name	Tributary To	Wild Trout Limits	Site River-mile ●	Species	Catch	Length (inches)
Westmoreland	Coalpit Run	Loyalhanna Creek	Headwaters to mouth	0.15	Brown	3	6-12

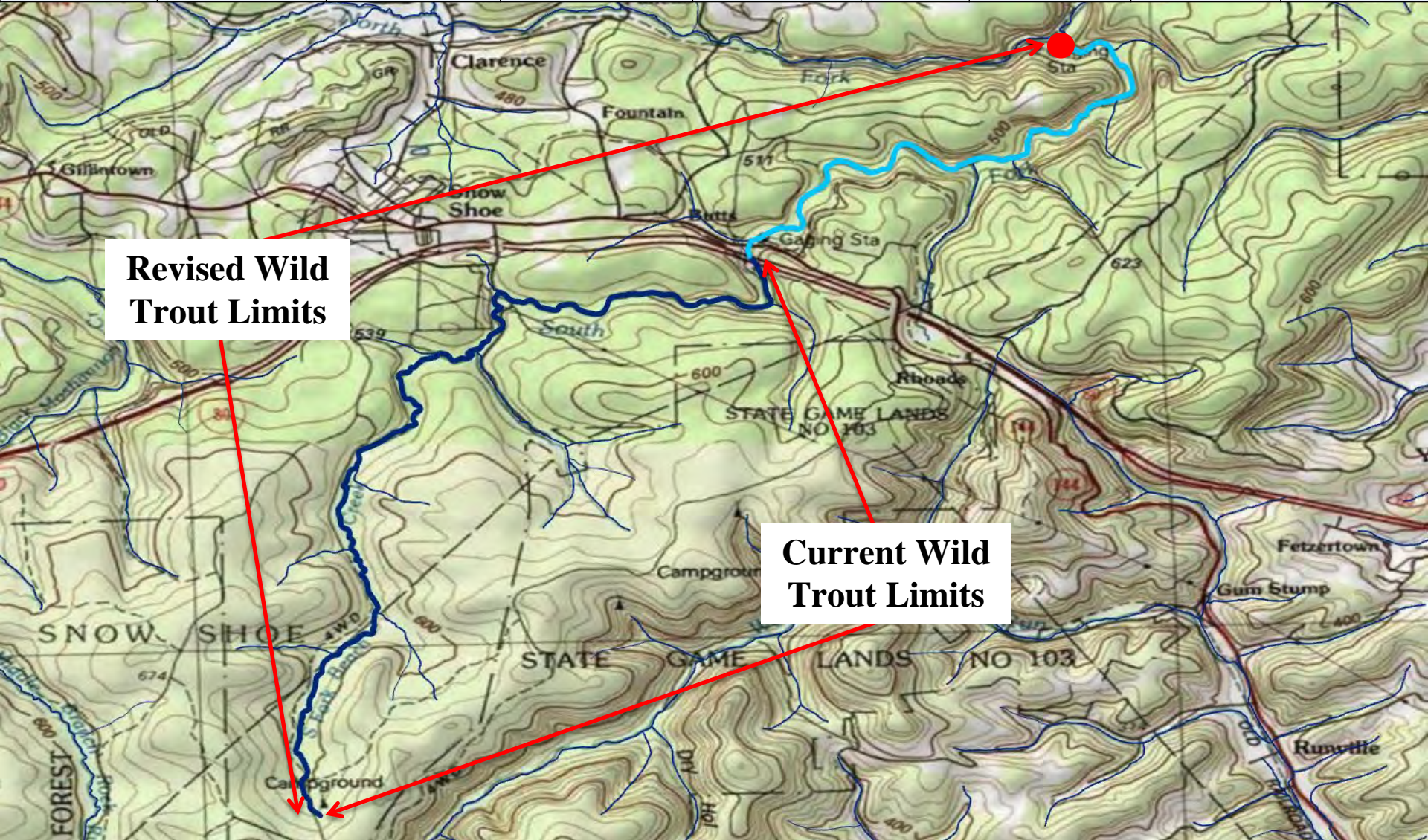


County of Mouth	Stream Name	Tributary To	Wild Trout Limits	Site River-mile ●	Species	Catch	Length (inches)
Westmoreland	Dark Hollow	North Fork Coalpit Run	Headwaters to mouth	0.36	Brook	9	2-9

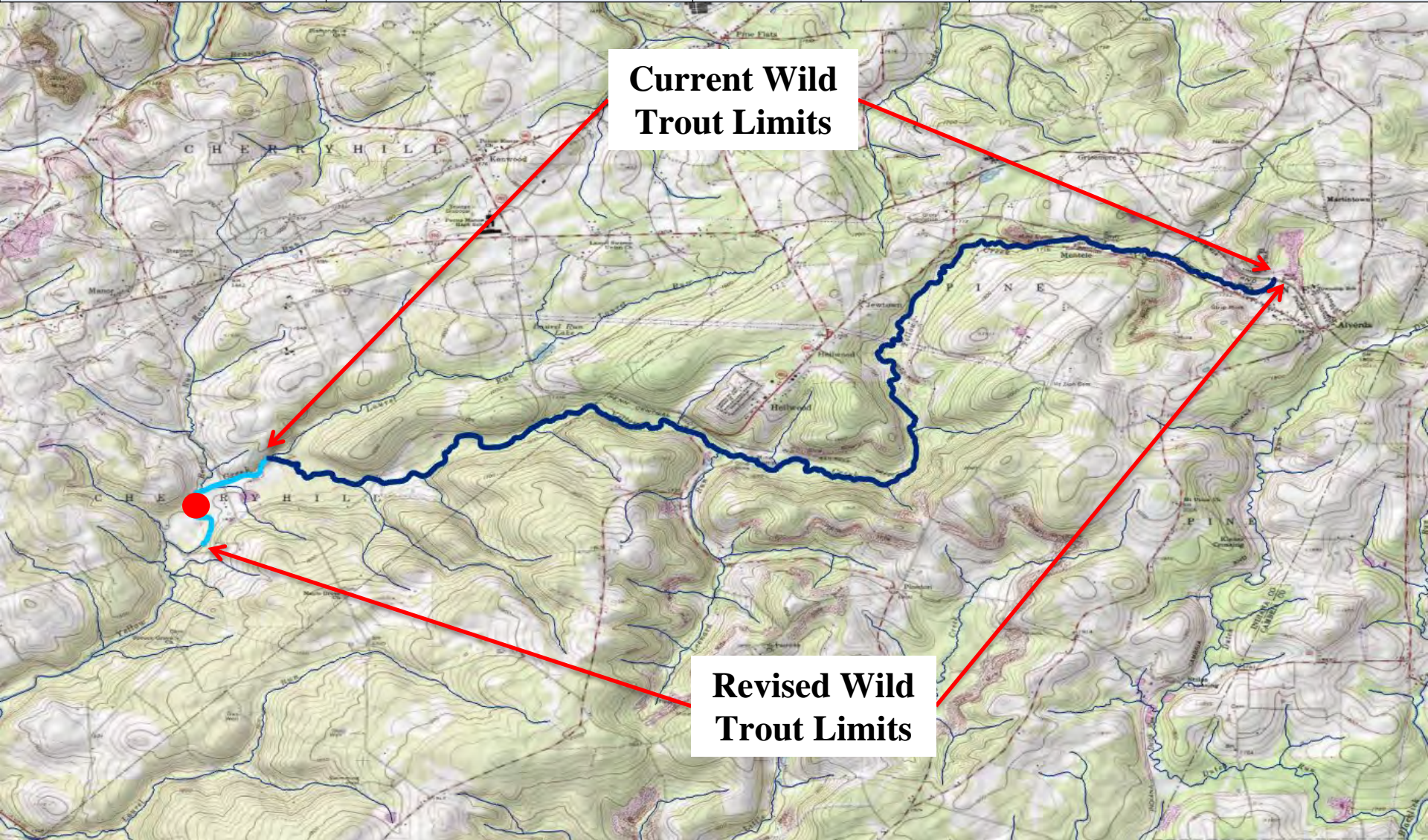


Wild Trout Revisions

County of Mouth	Stream Name	Tributary To	Current Wild Trout Limits	Revised Wild Trout Limits	Site River-mile ●	Species	Catch	Length (inches)
Centre	South Fork Beech Creek	Beech Creek	Headwaters to I-80 bridge	Headwaters to mouth	0.02	Brook Brown	88 126	2-9 3-14



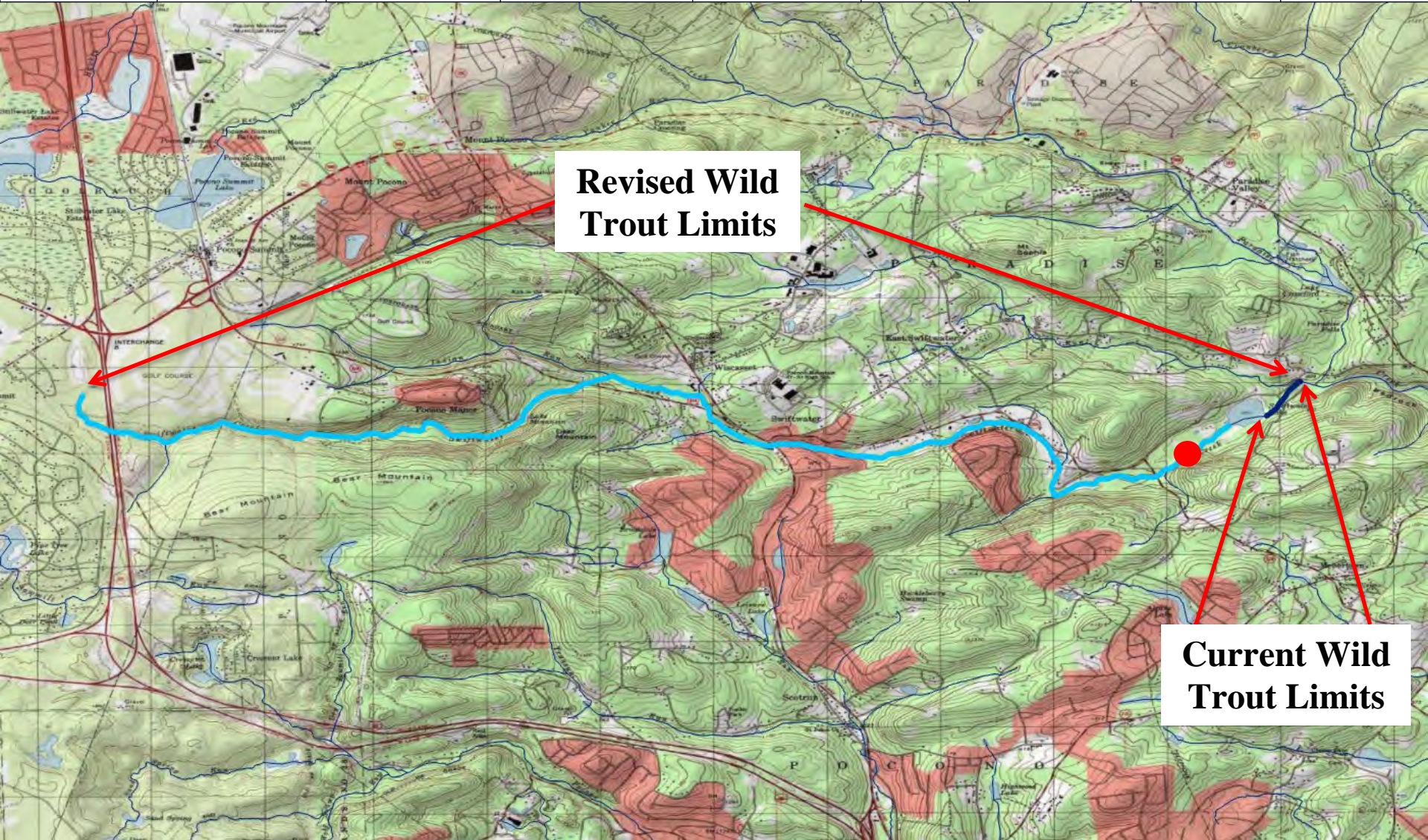
County of Mouth	Stream Name	Tributary To	Current Wild Trout Limits	Revised Wild Trout Limits	Site River-mile ●	Species	Catch	Length (inches)
Indiana	Yellow Creek	Two Lick Creek	Headwaters to Laurel Run	Headwaters to 300 meters upstream Diehl Road Bridge	16.46	Brown	85	2-15



County of Mouth	Stream Name	Tributary To	Current Wild Trout Limits	Revised Wild Trout Limits	Site River-mile ●	Species	Catch	Length (inches)
Monroe	Forest Hills Run	Paradise Creek	Unnamed Lake near East Swiftwater to Paradise Creek	Headwaters to mouth	3.41	Brown	336	2-14



County of Mouth	Stream Name	Tributary To	Current Wild Trout Limits	Revised Wild Trout Limits	Site River-mile ●	Species	Catch	Length (inches)
Monroe	Swiftwater Creek	Forest Hills Run	Swiftwater Lake to mouth	Headwaters to mouth	0.96	Brook Brown	4 36	3-6 2-14



County of Mouth	Stream Name	Tributary To	Current Wild Trout Limits	Revised Wild Trout Limits	Site River-mile ●	Species	Catch	Length (inches)
Montgomery	Perkiomen Creek	Schuylkill River	Headwaters to Tollgate Road (T-540)	Headwaters to Green Lane Reservoir	26.59	Brown	3	8-12

