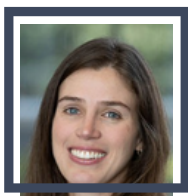
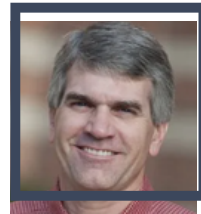


# 2026 PA FARM SHOW

## DEPARTMENT 14 - HAY AND STRAW

### MEET YOUR COMMITTEE CHAIR PEOPLE!

**Ronald Hoover** is a familiar name when talking Grains in Pennsylvania. Ron is a senior project extension with Penn State Extension and the coordinator of the On-Farm Research Program.



**Daniela Carrijo** is an Assistant Professor and Extension Specialist in grain crop production, specializing in corn, soybean, and small grains. Her expertise supports farmers through research and outreach, and she is a valuable member of the Farm Show grain committee.

**Guogie Wang** serves as the Assistant Professor of Forage Crop Systems for Penn State Department of Plant Science.



### ENTRY DEADLINE

All entries must be made online using FairEntry software no later than 6:00 p.m., January 7, 2026.

Please be sure to review all general rules and department rules prior to entering.



#### *New for 2026*

#### *New Co-Chairs*

Help us welcome new Co-Chairs Daniela Carrijo and Guogie Wang



PA Secretary of Agriculture, Russell C. Redding

Pennsylvania's State Fair showcases top competitors from 108 county and local fairs, and the diversity and quality of Pennsylvania's agriculture industry, the innovative people who make it thrive, and the faces of our proud past and promising future. The show offers visitors a peek into the industry that supports 593,000 Pennsylvania jobs and contributes \$132.5 billion to Pennsylvania's economy every year. See you at the PA Farm Show!

# RULES AND REGULATIONS

Hay Delivery	1. The Hay Show is located inside the Harrington Building at the end of East 5th Street. Hay samples delivered to Ag Progress Days on Tuesday, August 12 should be dropped off at the special HAY SAMPLE DROP OFF POINT located along the East entrance to Ag Progress Days or at the Harrington Building. Deadline for sample delivery is 10:00 a.m. on August 12.
Growing Requirements	2. The Hay and/or Straw shown must have been grown by the exhibitor in Pennsylvania since the 2025 Farm Show.
Entry Limits	3. Exhibitors may enter in as many classes as they wish, but no exhibitor shall make more than one entry in a class, either in her/his own name, the name of a farm, or the name of some other person. Samples which in the opinion of the hay and straw show committee are not suitable quality for competition will be disqualified prior to chemical evaluation.
Disqualification	4. Any entries delivered without pre-registration and full payment will be disqualified.
Judging	5. Hay exhibits will be judged on the basis of both visual and chemical evaluation. Straw exhibits will be judged on the basis of visual evaluation, color, and cleanliness.
Amount	6. All hay, straw, and baleage exhibits shall consist of a small bale section (14"x18", maximum) 4" to 6" thick, or the equivalent amount if cut from hay or straw in a large bale. Long hay and straw only. All silage & baleage exhibits shall consist of a least 1 gallon of product in a sealed clear plastic container.
Entry Blank	7. Every exhibitor must place on inside of package containing her/his exhibitor exhibits an entry blank for each exhibit, giving name, address, county, and class in which the exhibit is entered. Unclassed exhibits will be disqualified. The entry blank will be removed and a number substituted until the judging is completed.
Delivery Deadline	8. All straw samples must be delivered to the Pennsylvania Farm Show Complex & Expo Center by 6:00 p.m. on Thursday, January 8, 2026. Entries may also be mailed to the complex AND BE <b>RECEIVED AT THE PA FARM SHOW COMPLEX AND EXPO CENTER BY DECEMBER 26, 2025.</b> ITEMS RECEIVED IN THE MAIL AFTER THIS DATE WILL BE ACCEPTED IN THE SHOW.
End of Show	9. All exhibits will be destroyed at the close of the show. No exhibits will be returned to the exhibitor.
Judging Time	10. Judging will begin at 8:00 a.m. on Friday, January 9, 2026.

# REGISTRATION

See General Rules, Regulations & Health Requirements online at  
<https://www.farmshow.pa.gov/pafarmshow/exhibit/rules-regulations>

Use general entry blank online at <https://www.farmshow.pa.gov/pafarmshow/exhibit/forms-registration>

**An entry fee of \$1 per straw, silage, or baleage entry will be charged for each entry registered by 12/15/2025.**  
**An entry fee of \$2 per straw, silage, or baleage entry will be charged for each entry registered after 12/15/2025.**

2026 HAY ENTRIES CLOSE AT 10:00 A.M., AUGUST 12, 2025.

**NEW:** ALL OTHER 2026 ENTRIES CLOSE AT 6:00 P.M., JANUARY 7, 2026.

ALL OTHER 2026 ENTRIES MUST BE POSTMARKED PRIOR TO DECEMBER 1, 2025.

## HOW TO ENTER



Use Google Chrome or Mozilla Firefox for best results.



Register all entries for each exhibitor in the family before proceeding to payment section.



Be sure to click the SUBMIT button when you have completed your entries.



Check your email inbox for a confirmation email with a list of your entries and invoice.



Be sure you receive the second email when your entries are approved by the Farm Show.



[Step by step entry video](#)



[Step by step entry document](#)



# HAY

## JUDGES

TBA

## DATE/TIME

### Hay, Forage, & Straw Judging

Friday, January 9, 2026

8:00 a.m.

Location TBD

## DIVISION 0001 - HAY: FIELD CURED (NO HEAT OR HAY PRESERVATIVES)

<b>Class 1</b>	<b>Alfalfa - First Cutting.</b> Alfalfa from stands at least one year old with <i>not over</i> 10% grasses.	<b>Class 8</b>	<b>Clover-Grass Mixed - Any Cutting.</b> A mixture of clover and grass with <i>not over</i> 50% grasses.
<b>Class 2</b>	<b>Alfalfa - Later Cutting.</b> Alfalfa with <i>not over</i> 10% grasses.	<b>Class 9</b>	<b>Orchardgrass - First Cutting.</b> Pure species at least 90% Orchardgrass.
<b>Class 3</b>	<b>Alfalfa-Grass Mixed - First Cutting.</b> A mixture of alfalfa and grass with <i>over</i> 50% being alfalfa.	<b>Class 10</b>	<b>Timothy - First Cutting.</b> Pure species at least 90% Timothy.
<b>Class 4</b>	<b>Grass-Alfalfa Mixed - First Cutting.</b> A mixture of alfalfa and grass with <i>over</i> 50% being grass.	<b>Class 11</b>	<b>Other Species Grass - First Cutting.</b> Pure species (e.g. brome, fescue, etc.) at least 90%.
<b>Class 5</b>	<b>Alfalfa-Grass Mixed - Later Cutting.</b> A mixture of alfalfa and grass with <i>over</i> 50% being alfalfa.	<b>Class 12</b>	<b>Mixed Grass - First Cutting.</b> A mixture of two or more grass species, must be 90% grass.
<b>Class 6</b>	<b>Grass-Alfalfa Mixed - Later Cutting.</b> A mixture of alfalfa and grass with <i>over</i> 50% being grass.	<b>Class 13</b>	<b>Grass - Later Cutting.</b> Must be 90% grass.
<b>Class 7</b>	<b>Clover -</b> Clover with <i>not over</i> 20% grasses.		

## DIVISION 0002 - HAY: HEAT OR MECHANICALLY DRIED OR WITH PRESERVATIVES

<b>Class 21</b>	<b>Alfalfa - First Cutting.</b> Alfalfa from stands at least one year old with <i>not over</i> 10% grasses.	<b>Class 28</b>	<b>Clover-Grass Mixed - Any Cutting.</b> A mixture of clover and grass with <i>not over</i> 50% grasses.
<b>Class 22</b>	<b>Alfalfa - Later Cutting.</b> Alfalfa with <i>not over</i> 10% grasses.	<b>Class 29</b>	<b>Orchardgrass - First Cutting.</b> Pure species at least 90% Orchardgrass.
<b>Class 23</b>	<b>Alfalfa-Grass Mixed - First Cutting.</b> A mixture of alfalfa and grass with <i>over</i> 50% being alfalfa.	<b>Class 30</b>	<b>Timothy - First Cutting.</b> Pure species at least 90% Timothy.
<b>Class 24</b>	<b>Grass-Alfalfa Mixed - First Cutting.</b> A mixture of alfalfa and grass with <i>over</i> 50% being grass.	<b>Class 31</b>	<b>Other Species Grass - First Cutting.</b> Pure species (e.g. brome, fescue, etc.) at least 90%.
<b>Class 25</b>	<b>Alfalfa-Grass Mixed - Later Cutting.</b> A mixture of alfalfa and grass with <i>over</i> 50% being alfalfa.	<b>Class 32</b>	<b>Mixed Grass - First Cutting.</b> A mixture of two or more grass species, must be 90% grass.
<b>Class 26</b>	<b>Grass-Alfalfa Mixed - Later Cutting.</b> A mixture of alfalfa and grass with <i>over</i> 50% being grass.	<b>Class 33</b>	<b>Grass - Later Cutting.</b> Must be 90% grass.
<b>Class 27</b>	<b>Clover -</b> Clover with <i>not over</i> 20% grasses.		

## DIVISION 0003 - HAY CHAMPIONS

<b>Class 61</b>	Grand Champion - All Classes Competing	<b>Class 62</b>	Reserve Grand Champion
-----------------	--	-----------------	------------------------

## HAY PREMIUMS

Class #	1st	2nd	3rd	4th	5th
<b>1-13, 21-33</b>	\$28.05	\$17.95	\$13.46	\$11.22	\$8.98
<b>61 &amp; 62</b>	Ribbon				

# STRAW, FORAGE, AND BALEAGE

## DIVISION 0004 - STRAW & FODDER

<b>Class 65</b>	Wheat Straw	<b>Class 69</b>	Other Straw
<b>Class 66</b>	Barley Straw	<b>Class 70</b>	Grand Champion - All Classes Competing
<b>Class 67</b>	Oat Straw	<b>Class 71</b>	Reserve Grand Champion
<b>Class 68</b>	Rye Straw		

## STRAW & FODDER PREMIUMS

Class #	1st	2nd	3rd	4th	5th
<b>65-69</b>	\$28.05	\$17.95	\$13.46	\$11.22	\$8.98
<b>70 &amp; 71</b>	Ribbon				

## DIVISION 0005 - SILAGE

<b>Class 73</b>	Oat Silage	<b>Class 77</b>	Alfalfa Silage
<b>Class 74</b>	Triticale Silage	<b>Class 78</b>	Other Silage
<b>Class 75</b>	Rye Silage	<b>Class 79</b>	Grand Champion - All Classes Competing
<b>Class 76</b>	Corn Silage	<b>Class 80</b>	Reserve Grand Champion

## SILAGE PREMIUMS

Class #	1st	2nd	3rd	4th	5th
<b>73-78</b>	\$28.05	\$17.95	\$13.46	\$11.22	\$8.98
<b>79 &amp; 80</b>	Ribbon				

## DIVISION 0006 - BALEAGE

<b>Class 81</b>	<b>Alfalfa - First Cutting.</b> Alfalfa from stands at least one year old with <i>not over</i> 10% grasses.	<b>Class 87</b>	<b>Clover</b> - Clover with <i>not over</i> 20% grasses.
<b>Class 82</b>	<b>Alfalfa - Later Cutting.</b> Alfalfa with <i>not over</i> 10% grasses.	<b>Class 88</b>	<b>Clover-Grass Mixed - Any Cutting.</b> A mixture of clover and grass with <i>not over</i> 50% grasses.
<b>Class 83</b>	<b>Alfalfa-Grass Mixed - First Cutting.</b> A mixture of alfalfa and grass with <i>over</i> 50% being alfalfa.	<b>Class 89</b>	<b>Orchardgrass - First Cutting.</b> Pure species at least 90% Orchardgrass.
<b>Class 84</b>	<b>Grass-Alfalfa Mixed - First Cutting.</b> A mixture of alfalfa and grass with <i>over</i> 50% being grass.	<b>Class 90</b>	<b>Mixed Grass - First Cutting.</b> A mixture of two or more grass species, must be 90% grass.
<b>Class 85</b>	<b>Alfalfa-Grass Mixed - Later Cutting.</b> A mixture of alfalfa and grass with <i>over</i> 50% being alfalfa.	<b>Class 91</b>	<b>Grand Champion - All Classes Competing</b>
<b>Class 86</b>	<b>Grass-Alfalfa Mixed - Later Cutting.</b> A mixture of alfalfa and grass with <i>over</i> 50% being grass.	<b>Class 92</b>	<b>Reserve Grand Champion</b>

## BALEAGE PREMIUMS

Class #	1st	2nd	3rd	4th	5th
<b>81-90</b>	\$28.05	\$17.95	\$13.46	\$11.22	\$8.98
<b>91 &amp; 92</b>	Ribbon				

# FIRE REGULATIONS

1. All exit corridors and emergency exits must be kept clear; no partial blocking will be permitted.
2. All fire alarm pull stations must be kept clear.
3. Fire extinguishers may not be covered by any drapes or hidden by any type of displays.
4. No motorized camping units or vehicles may contain more than one (1) gallon of fuel while on display.
5. All pressurized fuel tanks may be drained.
6. All fuel fills must be locked and fuel caps must be taped closed with duct tape.
7. Any living trees and shrubs are acceptable as long as the shrubbery is individually bagged and baled.
8. Artificial trees and shrubbery must be treated with a flame proofing material. The fire official may request certification of flame proofing.
9. Any type of mulch materials must be treated with a flame proofing material or watered daily. If treated with a flame proofing material, certification may be requested by the fire official.
10. Smoking is prohibited in the Pennsylvania Farm Show Complex & Expo Center.
11. No open flames, fires or burning of any kind will be permitted within the Complex. No exterior burning is allowed unless the Department of Environmental Protection and the Bureau of Fire grant permission.
12. Vendors setting up tents, canopies and membrane covering must provide fire department with fire rating of material. Vendors must also provide any required portable fire extinguishers as needed.
13. Outside propane tanks shall be protected by posts or other approved physical barriers (Jersey barriers).
14. Extinguishers need to be visible, accessible and located in a conspicuous location where they will be readily accessible and immediately available for uses. These locations shall be along normal paths of travel.
15. Doors shall never be blocked or tied off.
16. The Fire Prevention Code of Harrisburg will be strictly enforced.

Contact the Harrisburg Bureau of Fire with any questions regarding the above regulations at 717-255-6464 or fax to 717-255-6448.

**R. E. Gallatin Jr.**  
**Fire Inspector**  
**123 Walnut St. Suite 220**  
**Harrisburg, PA 17101**  
**Phone: 717-225-3105**



# 2026 PA FARM SHOW

## EMERGENCY PREPAREDNESS TIPS

### EARLY DETECTION

- Early detection is the most effective way to prevent emergencies or lessen their impacts.
- Vendors and exhibitors will likely be the first to witness, experience, or report incidents.
- You can be the difference in preventing something harmful from happening.
- To report any type of threat or emergency incident, notify the PA State Police Command Post.

### BOMB THREATS

- Threats can be made in person, by phone, or in written message.
- Collect as much detailed information as possible about the threat (when, why, how, exact wording of threat, type of voice, personal appearance, clothing description, name, gender, phone number, physical address).
- It is especially important to know the perpetrator's timeline for activation of the device (when will it occur?).
- Immediately report the threat to the State Police Command Post.
- Authorities will investigate the threat and make the proper decisions accordingly in coordination with facility management.

### LOST CHILDREN

- Be sure to get the full name of the lost child and keep them safe with you. Notify the Farm Show security desk or closest security/law enforcement team. PSP or Farm Show staff will help to reunite lost children with loved ones.

**STATE POLICE**  
**717-787-4171**

-----  
**FARM SHOW SECURITY**  
**717-231-6565**

### SHELTER IN PLACE

- Although rare, there could be incidents that occur outside the facility that could put people at risk (chemical fire, very severe weather). In these instances, a shelter-in-place plan will be implemented for the welfare of all occupants.

### SUSPICIOUS OBJECT

- Do not touch or disturb the object.
- Maintain a safe distance from the object and attempt to isolate the area.
- Notify the State Police Command Post with a description and location of the object.

### SUSPICIOUS PERSON

- Observe the circumstances and behavior of the suspicious activity.
- Notify the State Police Command Post and provide as much detail as possible.
- Details about the person should include direction of travel, appearance, height and weight, build, clothing, speech, and anything about the behavior that indicates suspicion.

## SEE SOMETHING? SAY SOMETHING!

Security and Law Enforcement Stations are located at the Cameron Street Lobby entrance and the Crossroads Security Office

# EMERGENCY

## PREPAREDNESS TIPS

### STATE POLICE

**717-787-4171**

-----

### FARM SHOW SECURITY

**717-231-6565**

## FLOODING

- Facility management will attempt to mitigate the effects of flooding and natural disasters before they happen and will work with all show vendors during this type of event.
- The Maclay and West parking lots are susceptible to flash flooding.
- Avoid contact with flood water.
- If major interstates or surrounding roads are being closed, facility management will make announcements accordingly.

## MEDICAL EMERGENCY

- Notify the State Police Command Post and they will dispatch emergency medical services to the location.
- Describe the nature and severity of the medical incident and location of the victim.
- Do not attempt to move the person unless you are a trained medical responder.
- Stay with the victim and seek help from others if necessary.
- If rendering aid due to your training, be careful not to expose yourself to hazards such as fire, electricity, hazardous materials, or blood borne pathogens

## FIRE & EVACUATION

- If you see a fire, activate the nearest alarm or notify the Farm Show Security Desk.
- The City of Harrisburg Bureau of Fire will respond to the alarm.
- When the building evacuation alarm is activated, leave by the closest and safest exit and alert others to do the same.
- Quickly take all personal belongings.
- Please listen to the instructions of the PA system announcements, Farm Show Complex employees, or responders.
- Do not use elevators!
- The facility is equipped with sprinklers and ABC fire extinguishers.
- Once outside, move a safe distance from the building.
- Do not return to an evacuated building until the 'all-clear' sign is provided by the Fire Chief, a Police Officer, or any other official first responder.
- Do not operate cell phones during an evacuation until the 'all-clear' is given

## VIOLENT BEHAVIOR

- Your safety comes first. Use your best judgement to preserve your life.
- Report any physical abuse to the State Police Command Post.
- If there's an active shooter in the facility but not in your area, evacuate the facility and find safety.
- If the active shooter is near your area and preventing your escape, go to a room that can be lock or barricaded or hide and remain silent.
- If the shooter knows you are there but you feel you can flee, quickly evacuate the area.
- If you feel like fleeing is not possible, you can either confront, or attempt to overpower the person.
- If there is a shooter, messages regarding the known location of that person may be broadcast over the PA System.

## SEE SOMETHING? SAY SOMETHING!

Security and Law Enforcement Stations are located at the Cameron Street Lobby entrance and the Crossroads Security Office

# FAMILIAR FACES

## MAIN HALL

### **Lizzie Bailey and Madi Shaw**

have once again committed to being your Main Hall floor managers. In addition, they will coordinate and host all activities on the Main Hall stage.

Interested in giving a presentation? Reach out!



**PAFARMSHOW.GOV**