



Pennsylvania
**Farm Show Complex
and Expo Center**

Event Guide

July 2025 - June 2026



Welcome



The Pennsylvania Farm Show Complex & Expo Center is the premiere event facility that boasts the most versatile accommodations in the state! With over one million square feet of conference rooms, large exposition halls, arenas and banquet facilities, our convention center is limitless in its capabilities. We are home to countless expositions, sporting events, competitions, private dinners, and much more.

As a current or future customer, we are committed to assisting you in every aspect of your event planning. We take great pride in our high level of customer service, and we are anxious to begin working closely with you as you plan. This event guide is the first step in that process. An abridged version of this manual and some additional information regarding the facility are available on our website **farmshow.pa.gov**

Heidi Svonavec
Executive Director


  **717-724-6941**

Administration


Morgan Firestine
Events Director

  **717-724-6940**

Ryan Webster
Events Manager

  **717-783-9657**



Doug Cleckner
Events Manager

  **717-787-5374**

Nessa Rodriguez
Meetings Manager

  **717-772-0522**

Deb Trump
Sr. Events Coordinator

  **717-724-6942**

C&J Catering
Exclusive Caterer

 **717-576-1610**

24 Hr Security

 **717-231-6565**

Maintenance

Jason Morgenstern
Engineering Director

  **717-877-7026**

Ann Brown
Operations Director

  **717-461-6061**

HVAC Supervisor

  **717-772-3510**

Mike Wilbert

Bldg Maintenance Manager

  **717-787-5465**

Jeff Martz

Bldg Services Supervisor

  **717-787-5465**

Security

Rich Gagliano
Security Chief

  **717-346-4233**

Jodi Bannon
Security Captain

  **717-783-1394**



Address: 2300 N Cameron St
Harrisburg, PA 17110-9443

GPS Coordinates: Approx. 40.3, -76.9

Phone: 717-787-5373 **Fax:** 717-783-8710



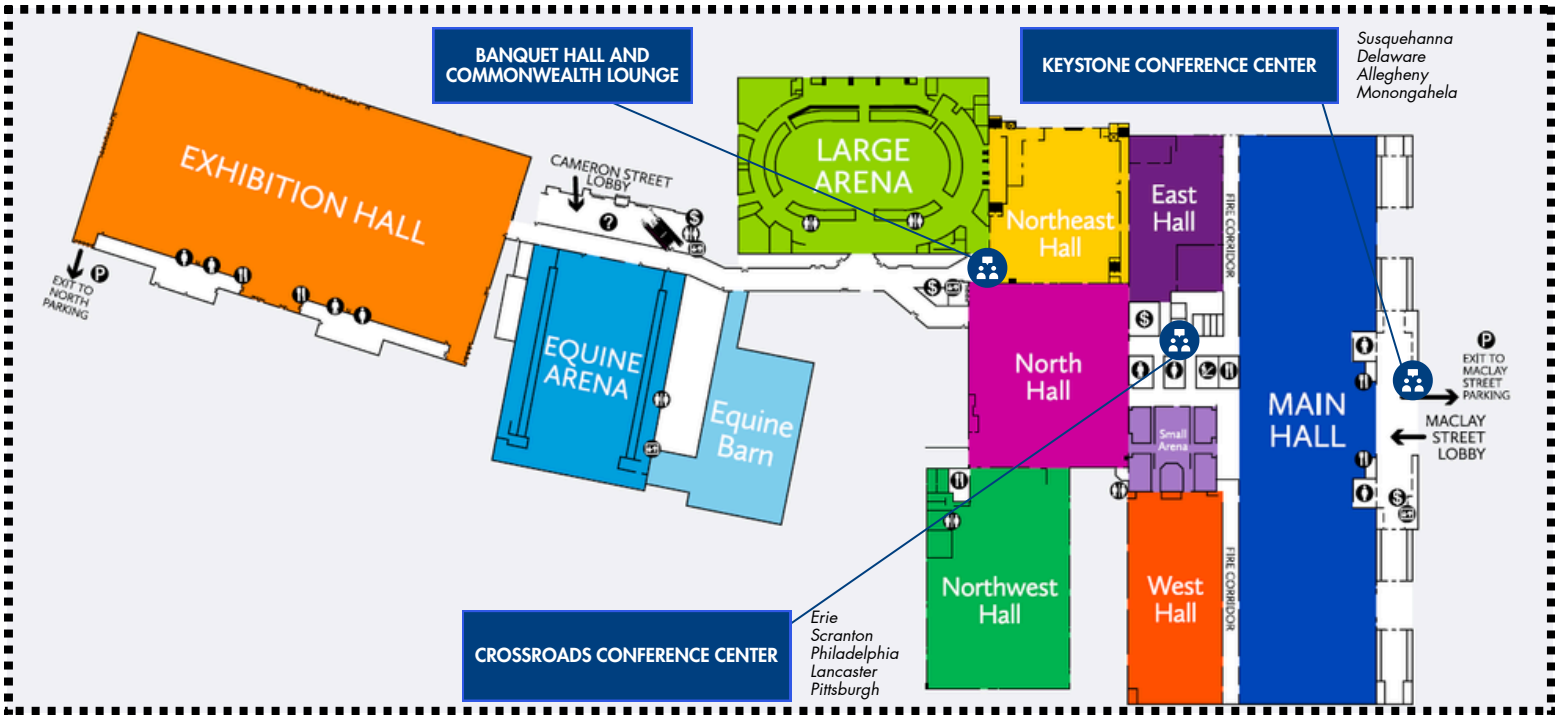
farmshow.pa.gov

3	<i>Index</i>
4	<i>Facility Overview</i>
5	<i>Parking and Hookup Information</i>
6	<i>Guidelines</i>
7	<i>Hall Rentals</i>
8	<i>Arena and Lobby Rentals</i>
9	<i>Information for Large Events</i>
10	<i>Meeting Room Rentals</i>
11	<i>Small Multipurpose Rooms</i>
12-13	<i>Service Charges</i>
14	<i>Labor and Electric</i>
15	<i>Wireless Internet Service</i>
16	<i>Fire Regulations</i>
17	<i>EMS & Security</i>
18	<i>Catering and Concessions</i>
19	<i>Package and Freight Delivery</i>
20	<i>Service Providers</i>

Facility Overview



Our entire complex is handicap accessible



KEY

Information Desk	Female Restroom	Stairs
Restroom	Parking	ATM
Male Restroom	Elevator	Food/Dining

24/7 Security

717-231-6565

General Inquiries

717-787-5373

More than **1 million** square feet under **1** roof

Spread throughout **11** halls and **3** arenas



11+

8,957 Parking Spaces



Meeting Spaces



60+ Staff with

Superior Service

Parking and Hookup Information



Nearly 3,000 total spaces

● North Lot

858 spaces

● Northwest Lot

1,209 spaces

● Equine Lot

242 spaces

● West Lot

170 spaces

● Maclay St Lot

300 spaces

○ Elmerston Lot*

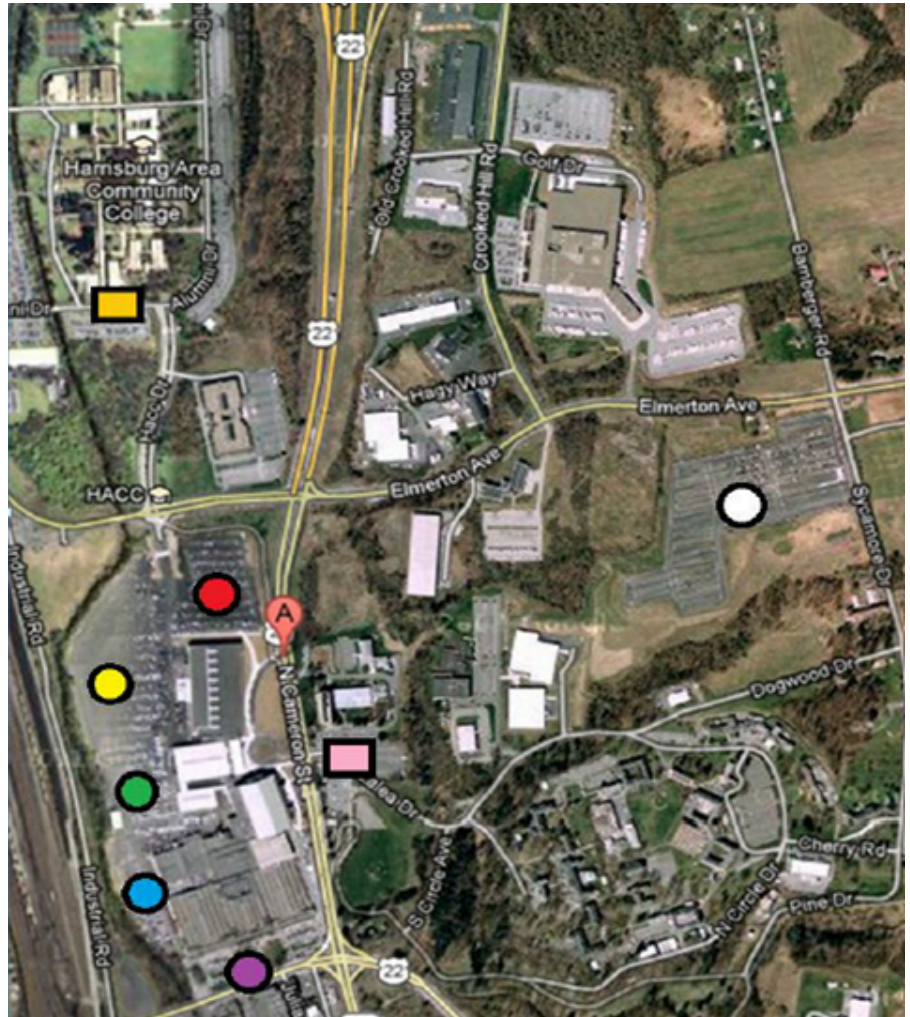
3,000 additional spaces

As needed optional lots*

Dept of Agriculture 500 spaces

HACC 2,500 spaces

**shuttle service available based on need*



On-Site Camper Hook Up Information

24 - 50 AMP Camper Electric Services
130 - 30 AMP Camper Electric Services
270 - 20 AMP Camper Electric Services

Contact security personnel prior to hooking up any camper.

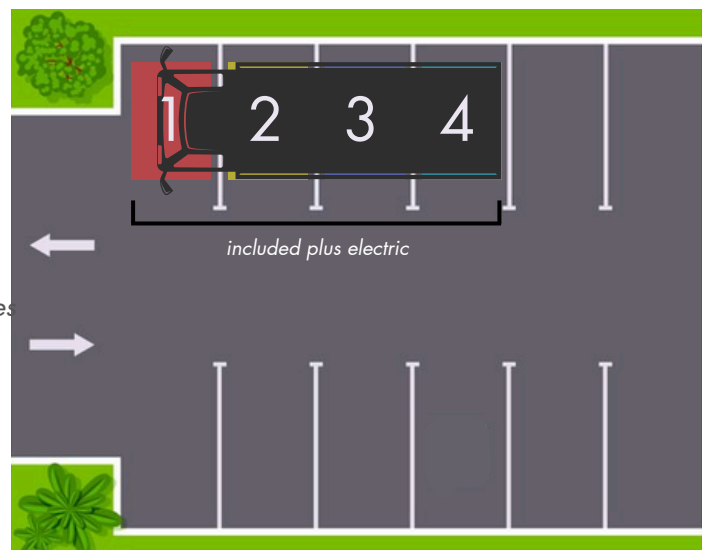
\$95 for the first day

\$40 each additional day

No water – no dumping facilities.

If camper requires more than four parking spaces, additional parking spaces can be purchased for \$15 per space per day.

1,291 spaces



Guidelines



- A detailed maintenance checklist and floor plan **must be submitted** to show management **thirty days prior to event**. A late fee will apply if not received in time.
- The PA Farm Show Complex reserves the right to increase the mandatory insurance cost in the case of potentially hazardous shows and events. These may include, but are not limited to, events involving weapons, operating motorized equipment and vehicles, and/or sporting events.
- Outside food and beverage is prohibited. Please contact C&J Catering at **717-576-1610** for all your catering and concession needs.
- Please only park where assigned, as directed by security. Please do not block overhead or pedestrian doors. This is a fire safety requirement. All emergency doors must have an 8' unobstructed clearance.
- Only Farm Show Complex employees are permitted to operate facility owned or leased equipment including forklifts, high-lifts, automobiles, trucks, golf carts, power equipment, etc.
- Smoking is prohibited throughout the PA Farm Show Complex & Expo Center and is only permitted 20' away from the building.
- Hanging signs from water lines, gas lines, heating pipes, electrical lines/equipment or telecommunication lines is specifically prohibited.
- When posting flyers or signage, please **only** use painter's tape. Painter's tape available onsite upon request. All other adhesives, including duct and scotch tapes, are not permitted.
- When marking floors, please only use "railroad chalk". Chalk is available onsite upon request. Paint, tape and aerosol type sprays are prohibited.
- Please refrain from placing decals on walls, floors or on any Complex property. The distribution of decals or stickers is prohibited.
- Please do not use the passenger elevators to move freight.



Giant Expo Hall

Hall Rentals



GIANT EXPO HALL	A/C <input checked="" type="checkbox"/>	EAST HALL	A/C <input type="checkbox"/>
30' Ceiling 172,000 sq ft \$14,573.44		13'6" Ceiling 16,500 sq ft \$1,118.43	
MAIN HALL	A/C <input type="checkbox"/>	WEST HALL	A/C <input type="checkbox"/>
13'6" Ceiling 146,527 sq ft \$9,932.54		13'6" Ceiling 38,000 sq ft \$2,575.77	
NORTH HALL	A/C <input type="checkbox"/>	EQUINE BARN	A/C <input type="checkbox"/>
13'6" Ceiling 56,000 sq ft \$3,795.88		13'6" Ceiling 27,000 sq ft \$2,019.95	
NORTHEAST HALL	A/C <input type="checkbox"/>	LOWER CONNECTOR LINK	A/C <input type="checkbox"/>
19' Ceiling 38,600 sq ft \$2,616.42		10' Ceiling 17,310 sq ft \$1,181.64	
NORTHWEST HALL	A/C <input checked="" type="checkbox"/>	UPPER CONNECTOR LINK	A/C <input checked="" type="checkbox"/>
13'6" Ceiling 55,000 sq ft \$4,349.44		9.6'-16' Ceiling 8,100 sq ft \$568.60	



Your hall rental includes:

- An ad on our electronic street signage
- Tables and chairs within catering areas*
- FREE Show Office**
- Radios for setup/event days to keep streamlined communication with FS Staff
- **Setup and teardown days are discounted at a 50% rate**

**Excessive table and chair counts may incur additional fees.*

***Additional small rooms within the halls are not included with the rates listed.*

Arena and Lobby Rentals



NEW HOLLAND ARENA (NHA) <i>Seats 7,318</i>			A/C ✓	SMALL ARENA <i>Seats 918</i>			A/C ✓
90' Ceiling	28,000 sq ft	\$5,648.63		17' Ceiling	4,000 sq ft	\$1,129.73	
NHA 1ST LVL CONCOURSE			A/C ✓	ROTUNDA			A/C ✓
12' Ceiling	23,000 sq ft	\$1,559.02		18' Ceiling	2,642 sq ft	\$282.43	
NHA 2ND LVL CONCOURSE			A/C ✓	CAMERON ST LOBBY			A/C ✓
12' Ceiling	21,000 sq ft	\$1,422.94		20' Ceiling	7,816 sq ft	\$903.78	
EQUINE ARENA <i>Seats 1,660</i>			A/C ✓	MACLAY ST LOBBY			A/C ○
30' Ceiling	39,200 sq ft	\$5,309.71		12' Ceiling	12,376 sq ft	\$699.31	



Your arena and lobby rental includes:

- An ad on our electronic street signage
- Tables and chairs within catering areas*
- FREE Show Office**
- Radios for setup/event days to keep streamlined communication with FS Staff
- **Setup and teardown days are discounted at a 50% rate**

**Excessive table and chair counts may incur additional fees.*

***Additional small rooms within the halls are not included with the rates listed.*

Information for Large Events



Event Discounts:

- Agricultural, youth, and commonwealth agency events may be eligible.
- Nonprofit groups do not qualify.

Taxes:

- City of Harrisburg 5% Tax
- Amusement Tax 5% Tax
- Payment of this tax is the sole responsibility of the Lessee.
- City Hall's Tax and Enforcement Office

717-255-6513

Parking:

- The Complex charges \$10.00 per vehicle.

Promoter Parking Passes:

- 20 complimentary passes
- Additional multi-day passes for vendors are available for purchase up to 2 weeks prior to the first rental day at a 20% discount.

Trailer Parking Pass Fee

- \$50.00 per day, includes two parking spaces
- Additional spaces - \$25.00 per space per day
- Additional trailers may be directed to park at an off site lot.
- Unauthorized trailers will be towed or booted.

Trailer Boot Removal Fee:

- \$100 per day
- Fee is charged at the time of unhooking
- All fees must be paid within 30 days.

Service Charges:

- Service fees are billed upon completion of your event.
- See page 12-13 for all options and details.



Equine Arena

Meeting Rooms Rentals



PA PREFERRED BANQUET HALL

Full Hall <i>Seats 1,100</i>	15,368 sq ft	\$1,129.73
Side A <i>Seats 550</i>		\$621.35
Side B <i>Seats 450</i>		\$508.38

COMMONWEALTH VIP LOUNGE

<i>Seats 300</i>	5,075 sq ft	\$338.92
------------------	-------------	----------

KEYSTONE CONFERENCE CENTER

All 4 Rooms <i>Seats 360</i>	8,588 sq ft	\$903.80
Susquehanna <i>Seats 60</i>	1,672 sq ft	\$225.95
Delaware <i>Seats 100</i>	2,288 sq ft	\$225.95
Allegheny <i>Seats 100</i>	2,340 sq ft	\$225.95
Monongahela <i>Seats 100</i>	2,288 sq ft	\$225.95

CROSSROADS CONFERENCE CENTER

Erie <i>Seats 100</i>	2,555 sq ft	\$225.95
Scranton <i>Seats 30</i>	700 sq ft	\$169.46
Philadelphia <i>Seats 25</i>	665 sq ft	\$169.46
Lancaster <i>Seats 25</i>	660 sq ft	\$169.46
Pittsburgh <i>Seats 25</i>	652 sq ft	\$169.46

Meeting room rentals utilize a sliding scale based on food and beverage purchases from *C&J Catering*. 20% of your catering total will be deducted off the room rent, noted on your final invoice. Discounts do not apply to service charges.

ADDITIONAL MEETING ROOMS

Board Room <i>Seats 20</i>	630 sq ft	\$169.46
Pennsylvania** <i>Seats 60</i>	1,425 sq ft	\$112.97
Exhibition Room B** <i>Seats 100</i>	2,650 sq ft	\$198.10
Exhibition Room C** <i>Seats 100</i>	2,650 sq ft	\$198.10



PA Preferred Banquet Hall

Your meeting room rental includes:

- Tables*
- Chairs*
- FREE onsite parking
- Air conditioning on the day of your event**

*Tables and chairs outside of a meeting space may incur additional fees.

**No A/C in PA Room, Ex. B or Ex. C



Monongahela Room

Small Multipurpose Spaces



ROOM 102	SHOW OFFICE (PSP)
1 st Concourse - New Holland Arena \$50.00/day	Near Expo Hall in 1 st Level Connector Spine \$50.00/day
ROOM 111	COAT ROOM
1 st Concourse - New Holland Arena \$50.00/day	Cameron Lobby \$50.00/day
ROOM 112	SALE ARENA OFFICE
1 st Concourse - New Holland Arena \$75.00/day	Sale Arena \$50.00/day
ROOM 118	MILKING PARLOR
1 st Concourse - New Holland Arena \$75.00/day	North Hall \$50.00/day
ROOM 149	VET'S OFFICE
1 st Concourse - New Holland Arena \$50.00/day	Outside North Hall \$100.00/day
ROOM 210/211	WASH RACK
2 nd Concourse - New Holland Arena \$80.00/day	North, Northwest, Expo, Outside Expo \$75.00/day
ROOM 215/216	DORM ROOM <u>1st Night</u> <u>2+ Nights</u>
2 nd Concourse - New Holland Arena \$80.00/day	Maclay Street - 2 nd Level \$80.00 \$20.00/night
PROMOTER OFFICE 1	BLUE & GOLD ROOM
1 st Level Connector Spine \$50.00/day	2 nd Concourse - New Holland Arena \$50.00/day
PROMOTER OFFICE 2	NORTHEAST HALL OFFICE
Between East Hall and Tan Hallway \$50.00/day	Northeast Hall \$50.00/day



Scan below for more information and to schedule a tour!



View our
facility photos



Contact an event
coordinator

Service Charges



CHAIRS

	FIRST DAY	ADDITIONAL DAYS
Steel Single	\$1.25	\$0.50
Steel Doubles	\$2.00	\$0.75
Steel Triples	\$3.00	\$0.75
Steel Quadruples	\$4.00	\$0.75
Directors	\$3.00	\$1.00
Plastic Stacking	\$1.00	\$0.50
High Stools	\$2.00	\$1.00
Banquet Hall Chairs	\$2.00	\$1.00
Park Benches	\$10.00	\$5.00
Bleachers	\$40.00	\$10.00
Office Chairs (Limited Availability)	\$2.00	\$2.00

TABLES

	FIRST DAY	ADDITIONAL DAYS
30" x 8' Rectangular	\$5.00	\$2.00
5' Banquet Rounds <i>banquet hall & food courts only</i>	\$8.00	\$2.00
6' Banquet Rounds <i>banquet hall & food courts only</i>	\$9.00	\$2.00
Picnic Tables	\$10.00	\$5.00

BLACK STEEL FRAME STAGING

Total Size	992 sq ft
Unit Size	4' x 8' per section
	4" 16" 32" or 40" heights available
Cost	31 sets at \$100.00 per section
	<i>Includes safety railing</i>
Steps	4 Sets at \$15.00 each
	16/24" or 32/40" height



AUDIOVISUAL

	FIRST DAY	ADDITIONAL DAYS
PA Sound System with Wireless Mic	\$150.00/HALL	\$150.00/HALL
Portable PA System with Wireless Mic	\$150.00	\$100.00
Portable PA System with Wired Mic	\$100.00	\$50.00
Additional Wireless Microphones	\$70.00	\$70.00
Additional Wired Microphones	\$50.00	\$20.00
Mic Cord	\$35.00	\$15.00
Additional Speakers or Monitors	\$50.00	\$30.00
CD Players	\$50.00	\$30.00
External Tie-In <i>for phones, laptops, etc.</i>	\$30.00	\$30.00
Mini Mixer	\$50.00	\$30.00
Mixer Console	\$100.00	\$100.00
Projector Screens	\$50.00	

No projectors available.

Please note your needs on your maintenance and security checklist and forward to Farm Show Management no less than 30 days prior to your event to be sure we are prepared for your event.

Renter is liable for any unreturned or damaged items.

Additional Service Charges



RENTABLE ITEMS

EACH

Steps	\$30.00
Auctioneers Stand	\$50.00
Black & Gold Barriers	\$10.00
Black Bike Rack	\$10.00
Coat Racks	\$20.00
Cones	\$5.00/day
Dog Waste Stations	\$10.00
Dorm Beds	\$20.00
Easels	\$10.00
Set of American and PA Flags	\$10.00
Flatbed Wagon	\$25.00
Fuel	Market Price
Hand Sanitizer Stations	Market Price
Handicap Lift	\$10.00
Jersey/Concrete Barriers	\$30.00
Ladder	\$5.00
Mirror Table	DAY 1 DAY 2+
	\$20.00 \$8.00
Oil Dry	Market Price
Pallet Jack	\$10.00
Pedestal Fan	\$20.00
Picket Fence (Wood)	\$10.00
Picket Fence Post (Wood)	\$5.00
Podiums	\$25.00
Push Carts (Flatbed)	\$20.00
Refrigerator Curtains	\$20.00
Scaffold	\$20.00
Sheds	\$200.00
Snow Fence	\$20.00
Stainless Steel Sinks (3 Bay)	\$60.00
Table Skirting	\$10.00
Tensa Barriers/Stanchions	\$6.00
Televisions	\$150.00
Single Ticket Booths	\$70.00
Double Ticket Booths	\$80.00
Ticket Boxes	\$20.00
Water Heater	\$100.00
Whiteboard	\$20.00
White Cement Pole Fencing	\$6.00
White Chain Fence	\$20.00
Wooden Fencing/Barricades	\$10.00

LIVESTOCK ONLY

EACH

Barn Snow (Lime) + Spreader	Market Price
Floor Scale	\$50.00
Cinderblock	\$100/skid
Gate A Steps + Swing Gate	\$200.00
Gate A Setup	\$500.00
Gate A Puzzle Mat Only	\$100.00
Gate A Blue Floor Rails	\$50.00
Gate F Swing Gate	\$200.00
Loading Chutes	\$50.00
Pipe Rails	\$10.00
Portable Livestock Scales	\$100.00
Poultry Water Dishes	\$1.00
Rolled Rubber Mats	\$5.00
SA Pipe Rails	\$20.00
SA Animal Control Fence	\$20.00
SA Fence	\$20.00
SA Post & Rope	\$20.00
Sharp Containers	Market Price
Shovels/Rakes	\$10.00
Squeeze Pen	\$50.00
Filled Water Wagon	\$110.00/load
Water Only	\$0.15/cu ft
Wheelbarrows	\$10.00

STALLING PER PANEL

EACH

Horse Stall Panel*	\$37.50
WW Panels	\$20.00
Swine and Sheep Panels	\$12.50
Cattle Backers	\$11.00
Starter Poles	\$10.00

**Horse stall fees will be set at \$150 per stall. Rental includes back, side panels, & front panel (w/a door).*

PENS

EACH

Large Fowl	\$9.00
Turkey	\$10.00
Chicken - Small Double	\$4.00
Chicken - Large Double	\$7.50
Bantam Pen - Lg Double Quad	\$10.00

Excessive cleanup fees for rentals or service charges may apply.

*All items may be subject to late fees.
Renter is liable for any unreturned or damaged items. Pricing is subject to change.*

Labor and Electric



Labor

- Order more than 15 days prior to your event to ensure availability and avoid late fees.
- Available in half hour increments.

GENERAL LABOR FEES

Equipment Operator
Laborer
Electrician
Trades Worker
Security

FLOOR RATE

\$112.50
\$67.50
\$150.00
\$112.50
\$32.25

PER HOUR

\$75.00
\$45.00
\$100.00
\$75.00
\$21.50

Electric Policies

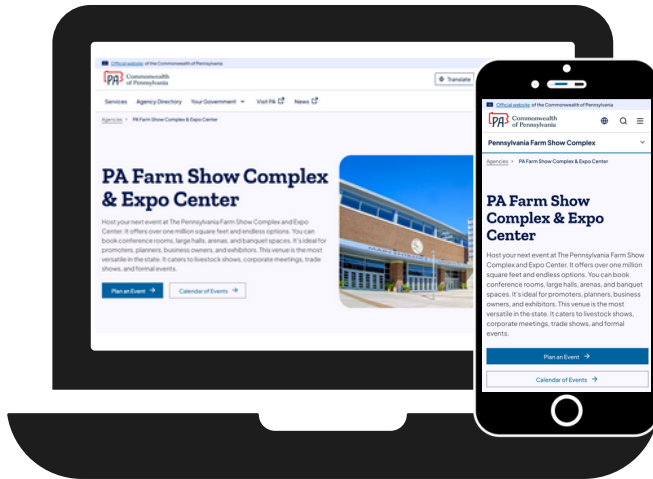
To process your requests as smoothly as possible, a detailed layout must be received by the Pennsylvania Farm Show Complex & Expo Center at least 30 days prior to the first day of show. A \$50 fee will apply to any late service requests.

- All equipment, regardless of source of power, must comply with all national, state and local safety codes.
- Unless specially authorized by the Complex's Electrical Department, no one other than the house electrician shall make electrical connections. They are authorized to cut floor covering to permit installation of service.
- All equipment must be properly tagged and wired with complete information as to type of current, wattage, voltage, phase cycle, horsepower, etc.
- All material and equipment furnished by the Complex for this service order shall remain the Complex's property and shall be removed only by the Complex at close of the show.
- Standard Rate: 208/120v single or three phase
- All exposed non-current carrying metal parts of fixed equipment, which are liable to be energized, shall be grounded.
- All exhibitors' cords must be rated to operate the equipment that you are using and should be at least 12/3 wire grounded type. Farm Show staff will inspect and if proper cords are not utilized, cords will be confiscated.
- All fountains and pumps should have Ground Fault Interruption (G.F.I.) protection.

DESCRIPTION	FIRST DAY	ADD'L DAY	ADVANCE RATE	FLOOR RATE
Up to 1500w	\$55.00	\$10.00	\$55.00	\$105.00
<i>Shows with more than 6 event days will be capped at a 6 day rate of \$105.</i>				
208V Single Phase				
20 AMP			\$135.00	\$175.00
30 AMP			\$150.00	\$185.00
50 AMP			\$240.00	\$290.00
60 AMP			\$275.00	\$325.00
100 AMP			\$400.00	\$450.00
208V Three Phase				
20 AMP			\$175.00	\$225.00
30 AMP			\$225.00	\$275.00
50 AMP			\$300.00	\$350.00
60 AMP			\$350.00	\$400.00
100 AMP			\$400.00	\$500.00
200 AMP			\$750.00	\$800.00

Rates cover bringing service to the booth in the most convenient manner and do not include connecting equipment or special wiring. Limited power available in certain locations. Pricing subject to change.

Wireless Internet Service



- The Complex offers free wireless internet service.
- The connectivity level will vary throughout the Complex due to your location and other variables.
- The free internet is not secure. You should take precautions to ensure your computers and other devices are protected.

Network: FreeFarmshowWifi

All of 2025: *farmshow2025*

All of 2026: *farmshow2026*

Wireless access is provided on an "as is" and "as available" basis and the Farm Show Complex & Expo Center does not warrant that this service will be uninterrupted, error-free, or free of viruses or other harmful components. Users should be aware that there are security, privacy, and confidentiality risks inherent in wireless communications and technology, and the Farm Show Complex & Expo Center does not make any assurances or warranties relating to such risks. By using wireless Internet access, a user agrees that the Farm Show Complex & Expo Center is not liable for any costs or damages arising from use of this service and the Farm Show Complex & Expo Center does not control any materials, information, products, or services on the Internet.

External Internet Provider

To conduct business, we strongly recommend that you contact a service provider to install a wired connection. Make sure you have dates needed, location of connection, and type of service required.



C&J Catering

717-576-1610

it@candjcatering.com

Fire Regulations



Harrisburg Bureau of Fire
123 Walnut Street Suite 220
Harrisburg, PA 17101
Phone: 717-255-6464
Fax: 717-255-6448
R. E. Gallatin Jr. Fire Inspector
(717)255-3105

- Smoking is prohibited in the Farm Show Complex & Expo Center.
- No open flames, fires, or burning of any kind will be permitted within the complex.
- No exterior burning will be allowed unless permission is given from the Fire Chief or his Designee.
- The Fire Prevention Code of Harrisburg will be strictly enforced and all events are subject to inspection by the Fire Chief or his Designee.

- Fire extinguishers may not be covered by any drapes or hidden by any type of display.
- Extinguishers must be visible, accessible, and in locations where they are ready and available for immediate use along normal paths of travel.
- The owner or operator of any tent shall provide approved fire extinguishing equipment in the type, amount, and locations specified by the Fire Chief or designee.
- Equipment must be maintained in working order, and personnel must be able to operate it and demonstrate proficiency upon request.
- All structures should have at least (1) portable fire extinguisher.
- All motorsports events should provide onsite fire protection for the event and have special agent extinguishers readily available. (e.g., Foam, Purple K)

- All tents, canopies, and membrane structures must comply with the Building Code and NFPA 102 when applicable.
- A battery-operated smoke alarm must be placed in every compartmentalized room within a temporary structure.
- If a structure has a full roof, a temporary auto suppression system is required.
- If the structure has a half or no roof, no auto suppression system is required.
- If the structure has electrical power, it must be shut off at the end of the night (unplugged or at the breaker).

- All fire alarm pull stations must be kept clear.
- No owner, agent, or operator may secure fire or exit doors in a way that restricts use.
- Automatic fire doors must remain unblocked.
- Aisles, passageways, and stairways must stay clear during public hours. Aisles must be at least 8 feet wide.
- Draperies or other hangings shall not be placed over exit doors or obscure visibility of any exit.
- All required exits, exit accesses, and discharges shall be continuously kept clear—no partial blocking permitted.
- All fire and exit doors shall have a clearance of 8 feet.
- It is unlawful to manually override or prop open any interior egress or fire door required to be self-closing.
- All exit signs shall be maintained, legible, and clearly illuminated whenever the building is occupied.
- Decorations, furnishings, or equipment that impair visibility of egress or exit signs are not permitted.
- Supplemental egress signs will be installed as necessary.

- Motorized vehicles can only be fueled/refueled using approved dispensing units.
- Fueling/refueling inside the building is prohibited.
- Equipment for fueling must be at least 10 feet from the building.
- No motorized vehicles may contain more than 1 gallon of fuel while on display.
- All pressurized fuel tanks must be drained.
- All RVs, trailers, etc., must have a working smoke detector while inside the building.

- Only propane tanks 10 lbs. or less are allowed inside the Farm Show building.
- All propane tanks, whether on an appliance or stored outside, must be secured at all times.
- Only the tank on the appliance is permitted inside the building—no extra tanks (full or empty) may be stored inside.
- Tanks over 10 lbs. may be set up outside and piped in according to propane company guidelines.
- Propane tanks stored outside must be protected by approved physical barriers (e.g., jersey barriers, metal cages).
- Anyone using propane is subject to inspection at any time on the premises.

- Living trees or shrubs must be individually bagged, baled, and watered daily.
- Mulch materials must be either flame-proofed or watered daily. Certification of flame-proofing may be required by the Fire Chief or Designee.

Questions? Please contact the Harrisburg Bureau of Fire.



Emergency Medical Services

- EMS will be provided with a radio from the complex that they must monitor and respond to.
- An emergency service provider is required to be on the Pennsylvania Farm Show Complex & Expo Center property during show hours of all events. As each event is unique and has its' own set up and tear down needs, event promoters are strongly encouraged to have an emergency service provider on duty during set up and tear down hours, depending upon the nature of the show.
- All emergency service providers must sign in at the Security Desk in the Cameron Street lobby upon arrival at the PA Farm Show Complex & Expo Center.
- All emergency service providers must have a current certification by the Pennsylvania Department of Health. In the event that the medical provider is a doctor or nurse, they must provide a copy of their active Pennsylvania Medical License or current and active Nurses Certificate respectively.
- Providers must supply the Farm Show Complex & Expo Center with a copy of their certification or license.
- Providers offering services at the Farm Show Complex & Expo Center must provide proof of insurance to the Complex & Expo Center prior to the event.
- Any Provider hired for an event at the Farm Show Complex & Expo Center must be able to communicate with Dauphin County Communications Center via radio.
- A First Aid Station must be located within the show area or in an area immediately adjoining the show area.
- All First Aid Stations must be well marked.
- If the Provider needs to leave the Complex & Expo Center to transport a patient they must have replacements available.
- All EMS units must bring their own supplies. The Farm Show Complex & Expo Center does not furnish supplies such as wheeled stretcher, AED, Oxygen, basic EMS supplies, radio to communicate with Dauphin County Command and all other standard equipment.
- Providers must be neat, clean and in uniform.
- Providers will be responsible for the clean up of any bodily fluids or debris and items must be properly disposed of.
- Dauphin County Communications Center requires any EMS Unit that will be providing first aid for an event to notify them 10 days in advance when (dates and times) they will be at the Complex. They may be reached at (717) 558-6900.

Medical Contacts

UPMC Community Life Team
717-236-5947

J.E.T. Response Medical Transport
717-462-0365

Susquehanna Township EMS
717-545-0842



Security

- It is the promoter's responsibility to provide necessary personnel to conduct internal security within the event areas during their show.
- Please provide the Farm Show Complex and Expo Center with your specific written security plans.
- Armed personnel must be properly certified and licensed. A list of those on duty at the facility must be provided.
- Service Providers must comply with current traffic control and flow plans provided by the Complex, in addition to following all State and Federal Laws.
- Designated parking areas will be provided to all shows and events. Please do not park in undesignated areas, or areas that block people or overhead doors.

Private Security Contacts

Harrisburg City Police
717-255-6447

Capital Police
717-787-9013

Dauphin County Sheriff
717-780-6590

KRE Security
Dave Bardo: 570-764-7888

It is your responsibility to ensure these guidelines are followed. We encourage you to share this information with your service providers.

Exclusive Caterer and Concessionaire



The PA Farm Show Complex and Expo Center is proud to partner with C&J Catering, our exclusive catering and concessions provider. C&J Catering is proud to serve as the exclusive catering and concessions provider for the PA Farm Show Complex & Expo Center. What began in 2004 as a small, two-woman operation has evolved into one of Central Pennsylvania's leading catering and event service companies. Today, we operate a wide range of commercial kitchens, cafes, micro markets, and venue-based services across the region.

Retail Food Services

As a PA Preferred caterer, we prioritize the use of fresh, local ingredients. Our team helps clients make thoughtful menu decisions based on seasonality and availability, supporting the local economy while delivering delicious, high-quality food. Whether you're planning a public event or need branded concessions, we can customize a menu tailored to your guests and your goals.

Full Service Catering

From intimate luncheons to large-scale galas, C&J Catering brings over 20 years of experience to the table. Our team handles every detail to ensure your guests have a seamless experience, from setup to service to clean-up. We offer everything from casual breakfast spreads and coffee bars to multi-course plated dinners with customized menus and presentation.

Call 717-576-1610 to start planning.

James Conrad
Concessions Contact

Ext. 110
jamesconrad@candjcatering.com

Samantha Demmy
Catering Contact

Ext. 116
samanthademmy@candjcatering.com

Package and Freight Delivery



For smooth delivery, all packages delivered to the Complex must include:

- Full name of show or event
- Contact person
- Contact phone number
- Booth number
- Return address



**Pennsylvania
Farm Show Complex
and Expo Center**

From: Farm Show 2025
John Smith
555-555-5555
Booth #11
2300 N Cameron Street
Harrisburg PA 17110

To: Farm Show Complex & Expo Center
2300 N Cameron Street
Harrisburg PA 17110

Package Delivery Procedure:

1. All shipments will be delivered to the Security Desk, located in the Cameron Street Lobby.
2. A security officer will retrieve your package upon delivery and log the date/time it was received.
3. A staff member will call the number listed on the parcel label to inform you that your package has arrived.
4. Please check in at the security desk upon arrival to collect your packages. A signature is required.

Please note: No freight may be delivered to the Complex more than 15 days prior to show date.

Questions? Contact Captain Jodi Bannon at (717) 783-1394



Cameron Lobby

External Service Providers

Decorators, Expo Services, and Rental Companies

**Penn State
Expo
Services**
717-965-2886



Visit Website

*Have any questions
or concerns about
**PA Farm Show
Complex &
Expo Center**
rented AV Equipment
or Services?
Please reach
out to your
Events Coordinator.*

**General
Exposition
Services**
717-540-8866



Visit Website



Audiovisual Production Services and Technology

**J.P. Lilley
& Son, Inc.**

717-238-8123



Visit Website

**PA Entertainment
Group**

717-540-9430



Visit Website

**Ross
Productions**

717-799-7529



Visit Website

Reminders



KEYS

Stop by the Cameron Street Lobby to gain facility access and pick up your keys.

RADIOS

3 radios are provided (2 show staff, 1 EMT).
Additional radios may be rented for \$35 each.



MAINTENANCE

Reach Maintenance on CHANNEL 1 (trash, cleaning, extra tables/chairs, area temperature).

SECURITY

Contact Security on CHANNEL 2 (unlock doors, change lighting, parking lot and safety concerns).



FOOD SERVICE

C&J Catering is the exclusive food and beverage provider. No outside items permitted.

SMOKING/VAPING

Smoking and vaping are prohibited inside the facility and only permitted 20' from the building.



SECURITY 24/7 ● 717-231-6565



SAFETY

Safety is everyone's responsibility, and taking it seriously helps protect the entire facility. If you see something unusual or suspicious—whether it's inside the building or around the premises—don't ignore it. Reporting these activities immediately can prevent accidents, theft, or potential threats. Stay alert, speak up, and help keep our environment safe for everyone.



PARKING

Park smart and do not block people or overhead doors.