



Pennsylvania  
**Department of Education**

# ANNUAL RESTRAINT INFORMATION SYSTEM COLLECTION (RISC) REPORT **2023-2024 School Year**



Pennsylvania  
**Department of Education**

**Commonwealth of Pennsylvania**

Josh Shapiro, Governor

**Department of Education**

Dr. Khalid Mumin, Secretary

**Office of Elementary and Secondary Education**

Dr. Carrie Rowe, Deputy Secretary

**Bureau of Special Education**

Dr. Carole L. Clancy, Director

The Pennsylvania Department of Education (PDE) does not discriminate in its educational programs, activities, or employment practices, based on race, color, national origin, [sex] gender, sexual orientation, disability, age, religion, ancestry, union membership, gender identity or expression, AIDS or HIV status, or any other legally protected category. Announcement of this policy is in accordance with State Law including the Pennsylvania Human Relations Act and with Federal law, including Title VI and Title VII of the Civil Rights Act of 1964, Title IX of the Education Amendments of 1972, Section 504 of the Rehabilitation Act of 1973, the Age Discrimination in Employment Act of 1967, and the Americans with Disabilities Act of 1990.

The following information has been provided to handle inquiries regarding the Pennsylvania Department of Education's nondiscrimination policies:

**For Inquiries Concerning Nondiscrimination in Employment:**

Pennsylvania Department of Education  
Equal Employment Opportunity Representative  
Bureau of Human Resources  
333 Market Street, 11th Floor, Harrisburg, PA 17126-0333  
Voice Telephone: (717) 787-4417, Fax: (717) 783-9348

**For Inquiries Concerning Nondiscrimination in All Other Pennsylvania Department of Education Programs and Activities:**

Pennsylvania Department of Education  
School Services Unit Director  
333 Market Street, 7th Floor, Harrisburg, PA 17126-0333  
Voice Telephone: (717) 783-3750, Fax: (717) 783-6802

**If you have any questions about this publication or for additional copies, contact:**

Pennsylvania Department of Education  
Bureau of Special Education  
333 Market Street, 7th Floor, Harrisburg, PA 17126-0333  
Voice: (717) 783-6913, Fax: (717) 783-6139  
[www.education.pa.gov](http://www.education.pa.gov)

**All Media Requests/Inquiries: Contact the Office of Press and Communications at (717) 783-9802**

## Contents

Introduction.....	5
Total Number of Incidents of Restraints (by Academic Level) .....	6
Total Number of Unique Student Restraints (by Academic Level) .....	7
Total Number of Students Restrained (by Disability Category).....	8
Location Where Restraints Occurred – Disaggregated.....	9
Types of Restraints Implemented – Disaggregated .....	10
Injuries to Staff/Injuries to Students.....	11
Types of Restraints Resulting in Injuries .....	12
Restraints with Injuries by Location .....	13
Duration of Time per Restraints.....	14
Staff Title Breakdown.....	15
Individualized Education Program (IEP) Meetings After Restraint .....	17

## Introduction

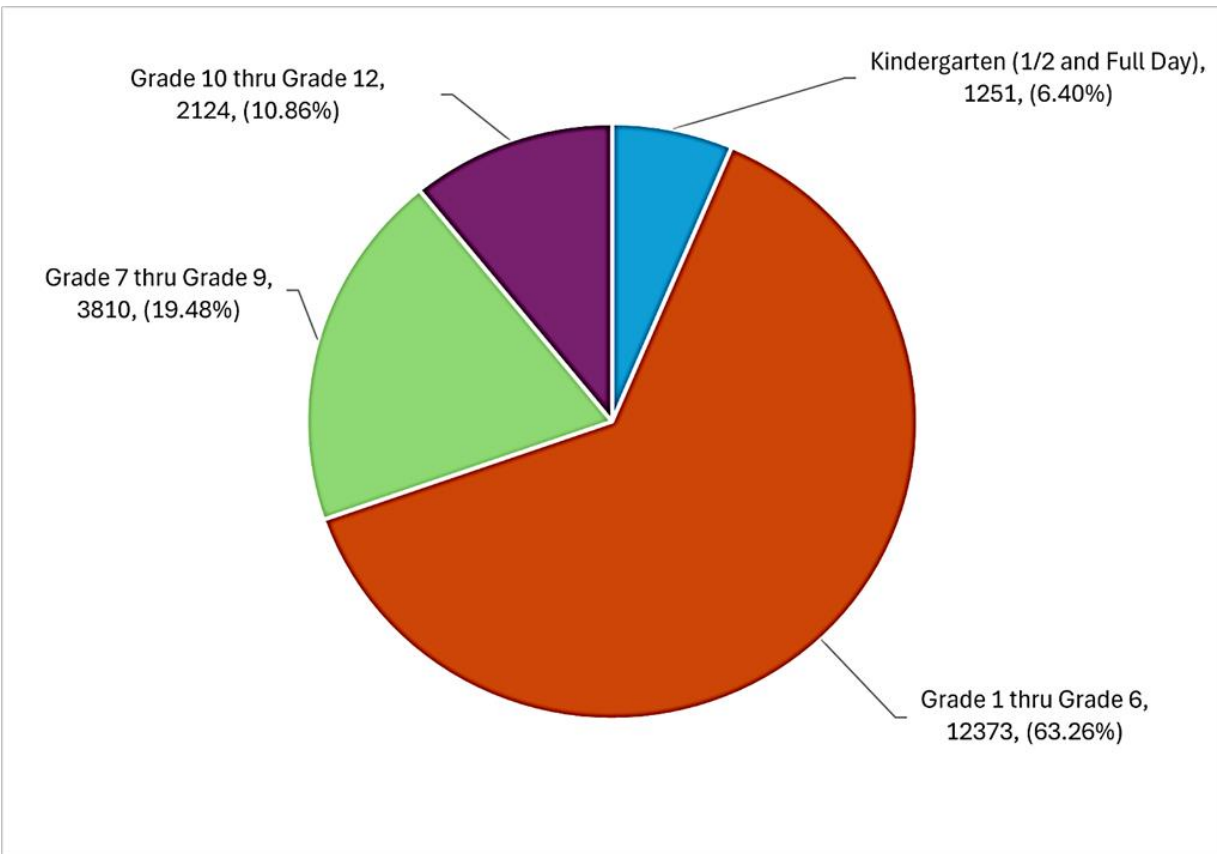
The Restraint Information System Collection (RISC) is a data collection system for all restraints across the Commonwealth of Pennsylvania occurring with school-aged students in educational programs that have an Individualized Education Program (IEP). RISC was developed by the Pennsylvania Department of Education (PDE), in conjunction with recommendations from the state Special Education Advisory Panel (SEAP). Annually, this report is presented to the Secretary of Education.

The Bureau of Special Education (BSE) closely monitors the use of positive behavior support and restraints by Local Educational Agencies (LEAs) across the Commonwealth. LEAs are required to comply with 22 Pa. Code § 14.133 (related to school entities) and 22 Pa. Code § 711.46 (related to charter schools and cyber charter schools). This includes reporting RISC data quarterly every school year. 22 Pa. Code §§ 14.133(c)(5) and 711.46(c)(5). This also includes training of personnel in specific procedures, methods, and techniques of restraint. 22 Pa. Code §§ 14.133(f) and 711.46(f). The training of personnel should provide varied intervention and strategies needed to address problem behaviors. PDE asserts the use of restraints is considered a measure of last resort, only to be used after other less restrictive measures, including de-escalation techniques. PDE utilizes the Pennsylvania Training and Technical Assistance Network (PaTTAN) and the 29 Intermediate Units to provide ongoing training to LEAs in Positive Behavior Intervention and Support programs (PBIS) and other research-based practices and techniques to develop and maintain skills that enhance an educator's ability to prevent restraints.

In conjunction with training and technical assistance, BSE also closely monitors LEA compliance with positive behavior support during the Cyclical Monitoring for Continuous Improvement (CMCI) process and conducts ongoing restraint reviews as data reported in the RISC system throughout the school year. When necessary, BSE conducts further investigation with LEAs when the following instances occur: mechanical restraints (handcuff), electric shock intervention (taser), excessive restraints lasting longer than 60 minutes, multiple injuries occurring with student and/or staff, patterns of excessive holds of a specific student, patterns of excessive holds that have not decreased over time, excessive law enforcement interventions, high waiver count without reconvening the student's IEP team, serious injury warranting a BSE investigation, law enforcement intervention without reconvening the student's IEP team, restraint of a student with an IEP who committed an incident listed in section 1303-A(b)(4.1) or (4.2) of the Safe Schools Act (22 Pa. Code § 10.23), and staff not trained in de-escalation and restraint programs.

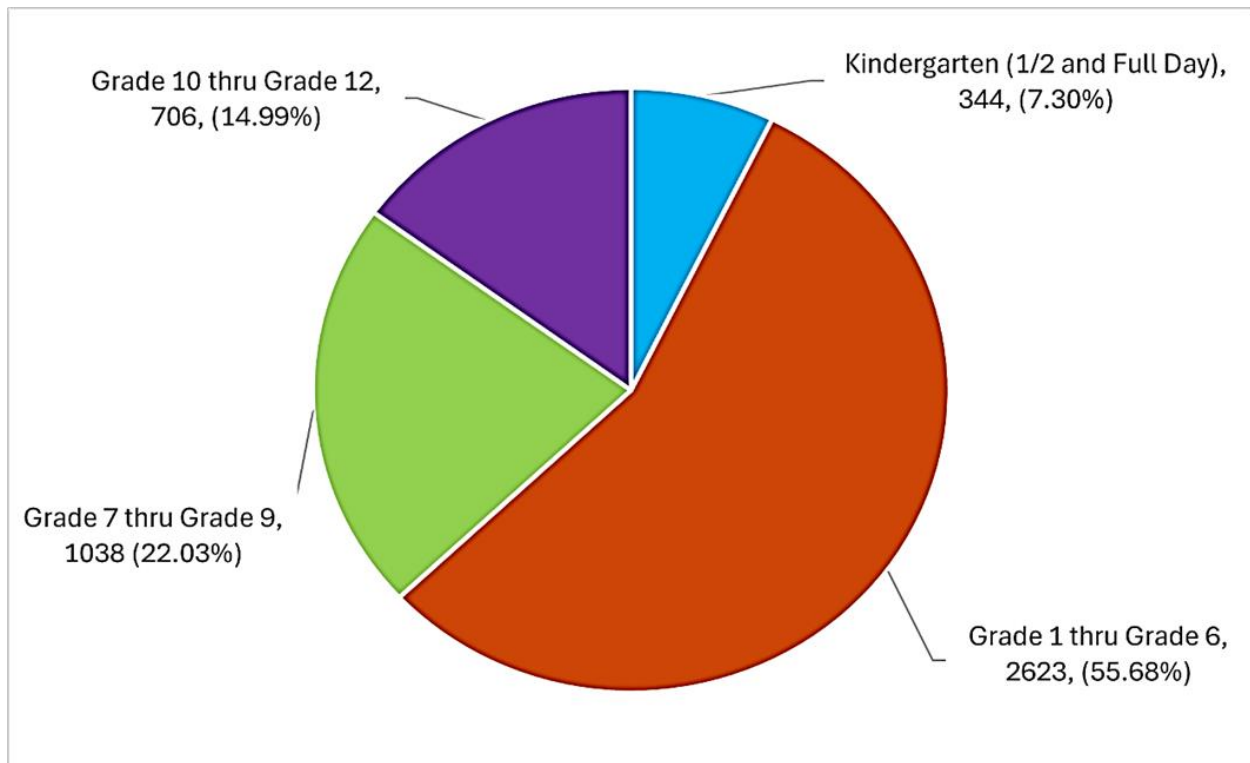
## Total Number of Incidents of Restraints (by Academic Level)

The total number of restraint entries for the 2023-2024 school year was 19,558.



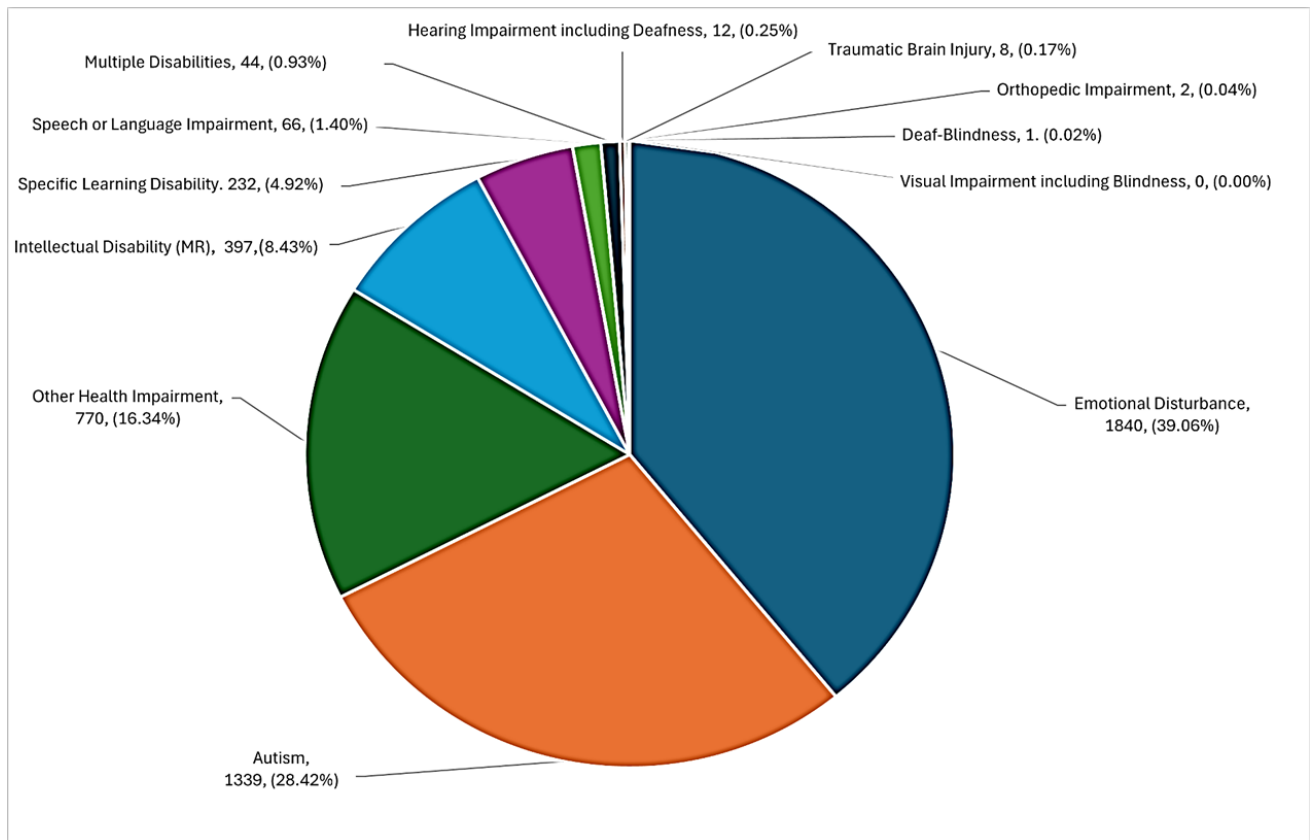
## Total Number of Unique Student Restraints (by Academic Level)

The total number of unique student restraints for the 2023-2024 school year was 4,711.



## Total Number of Students Restrained (by Disability Category)

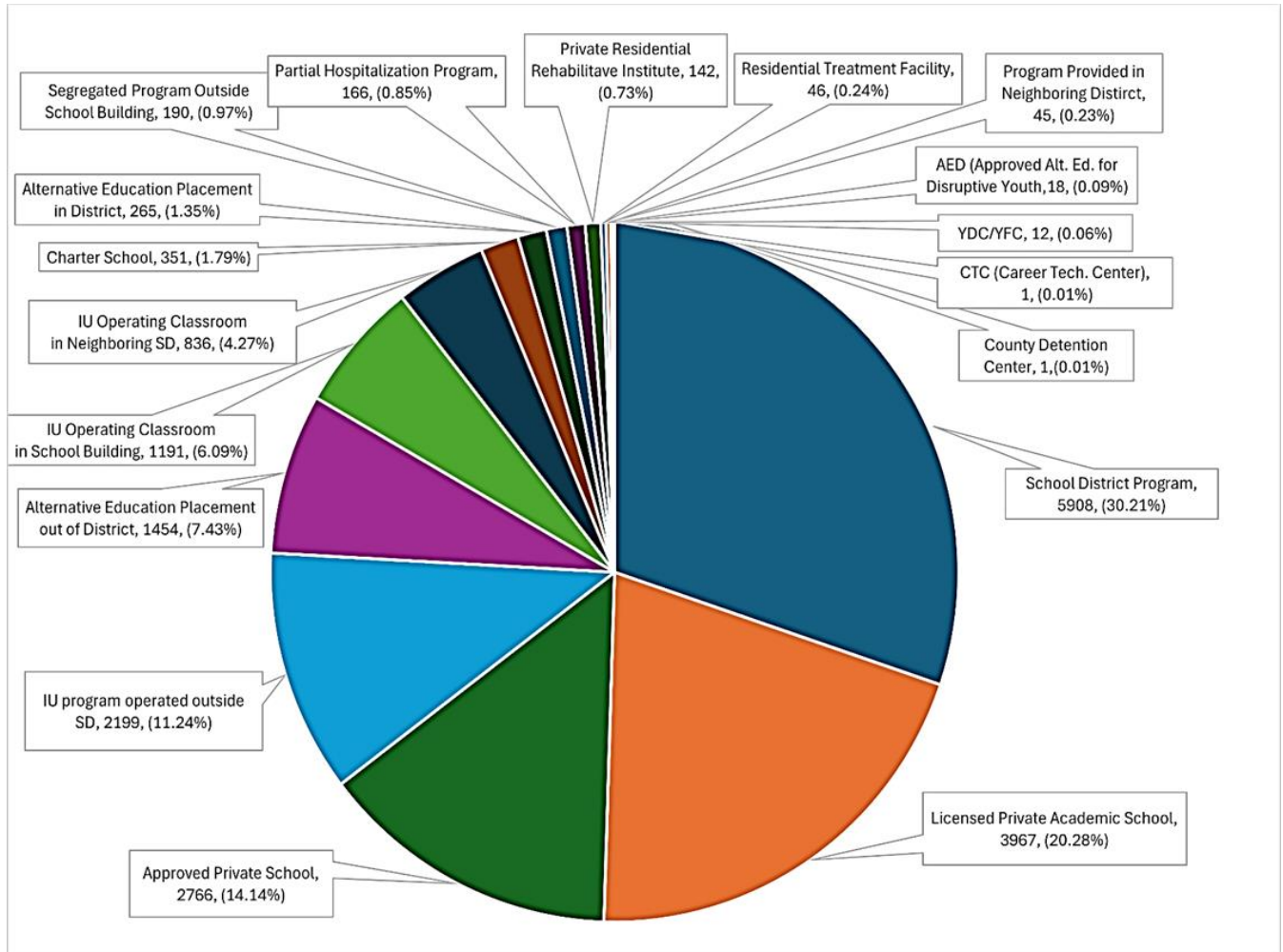
Of the 4,711 students restrained, the number of restraints by disability category is detailed below.





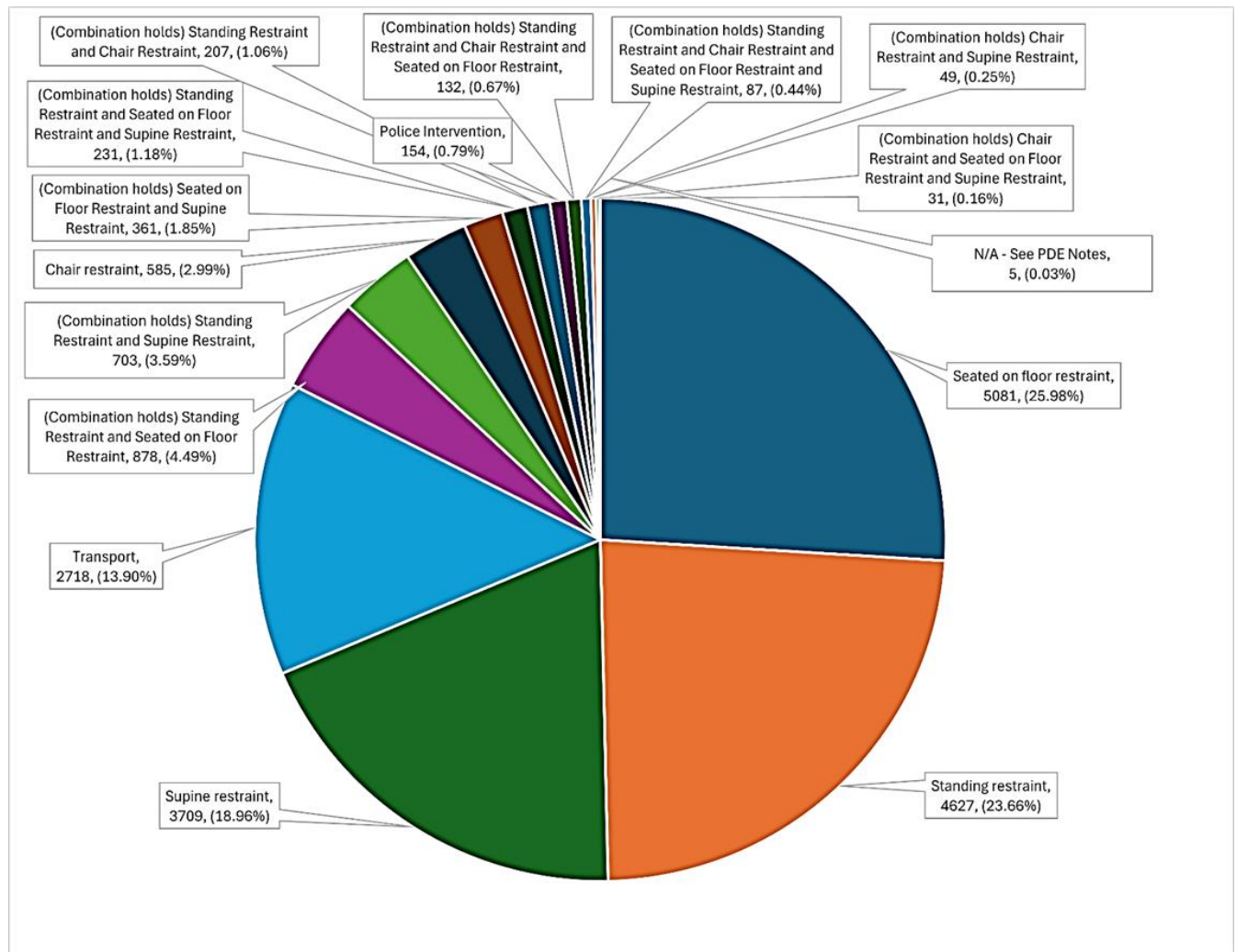
## Location Where Restraints Occurred – Disaggregated

Location of the 19,558 restraints in school-age programs for the 2022-2023 school year:



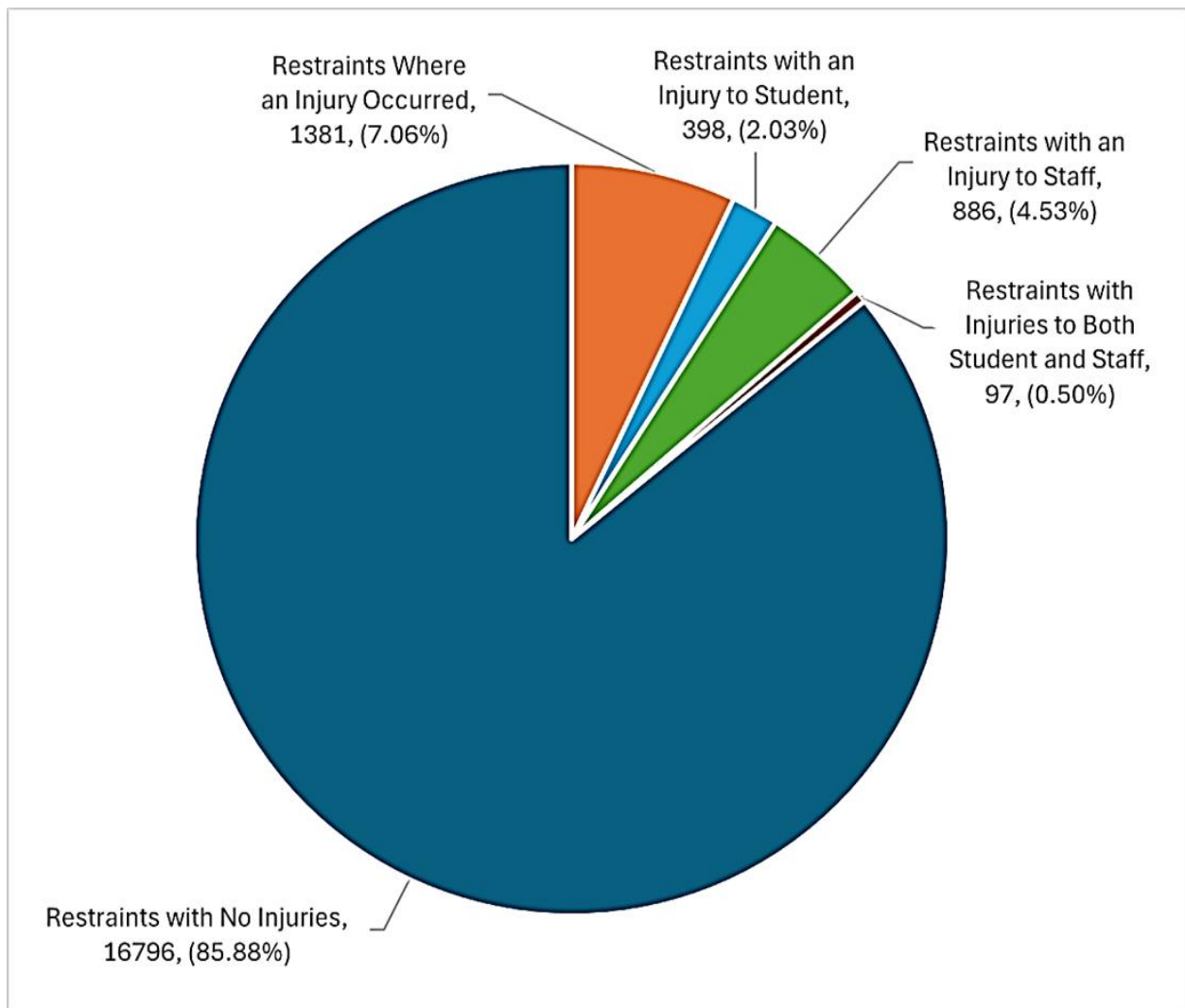
## Types of Restraints Implemented – Disaggregated

Of the 19,558 restraints, below are the types of restraints utilized:



## Injuries to Staff/Injuries to Students

Of the 19,558 restraints during the 2023-2024 school year, 2762 resulted in an injury (14.12%). There were 886 injuries to staff; 398 injuries to students; and 97 restraints that involved an injury to both a staff member and a student.



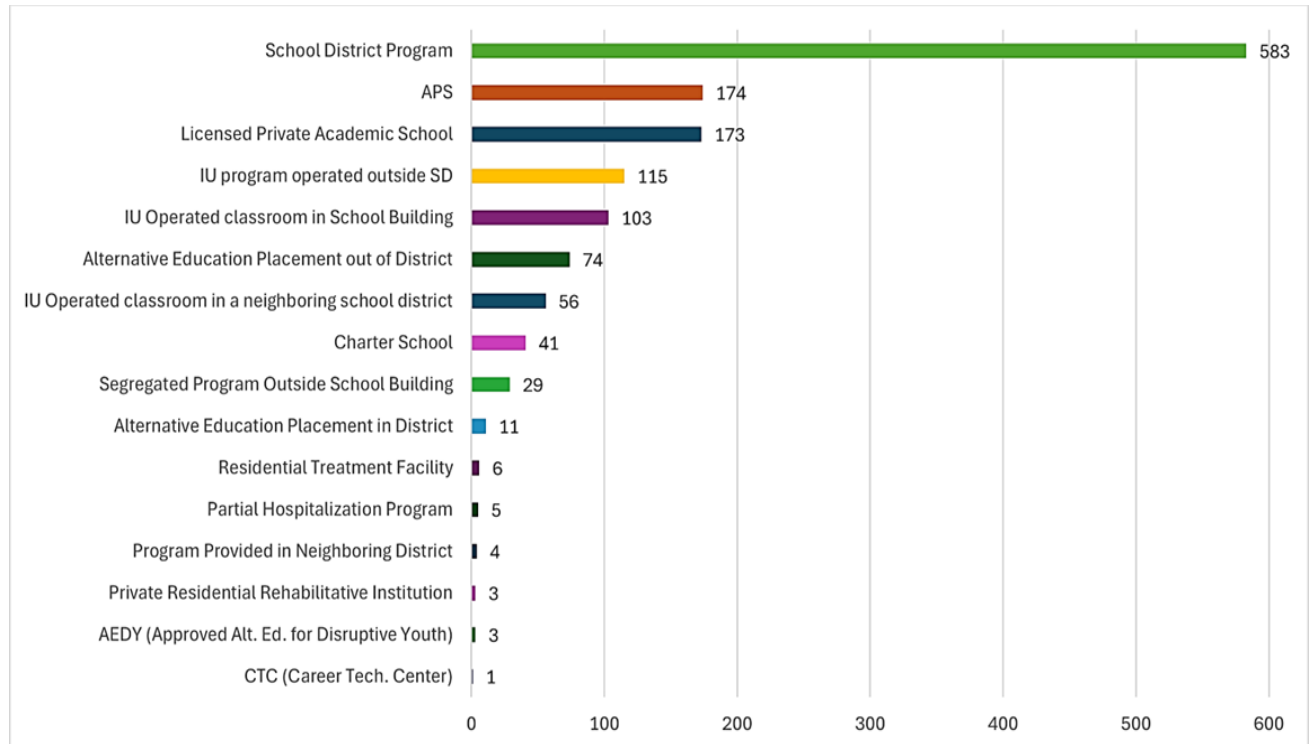
## Types of Restraints Resulting in Injuries

Of the 1381 injuries to students and staff, the types of restraints utilized are outlined below:

Type of Restraint	Restraint Count	Injury to Student Only	Injury to Staff Only	Injury to Both
Seated on floor restraint	381	108	248	25
Standing restraint	295	69	204	22
Supine restraint	197	77	106	14
Transport	138	34	99	5
(Combination holds) Standing Restraint and Seated on Floor Restraint	103	22	74	7
Chair restraint	62	16	41	5
(Combination holds) Standing Restraint and Supine Restraint	75	35	35	5
(Combination holds) Seated on Floor Restraint and Supine Restraint	31	14	14	3
(Combination holds) Standing Restraint and Chair Restraint	21	5	16	0
Police Intervention	25	7	13	5
(Combination holds) Standing Restraint and Chair Restraint and Seated on Floor Restraint	18	3	12	3
(Combination holds) Standing Restraint and Seated on Floor Restraint and Supine Restraint	21	4	16	1
(Combination holds) Chair Restraint and Supine Restraint	5	2	2	1
(Combination holds) Standing Restraint and Chair Restraint and Seated on Floor Restraint and Supine	7	2	4	1
(Combination holds) Chair Restraint and Seated on Floor Restraint and Supine Restraint	2	0	2	0
<b>TOTAL</b>	<b>1381</b>	<b>398</b>	<b>886</b>	<b>97</b>

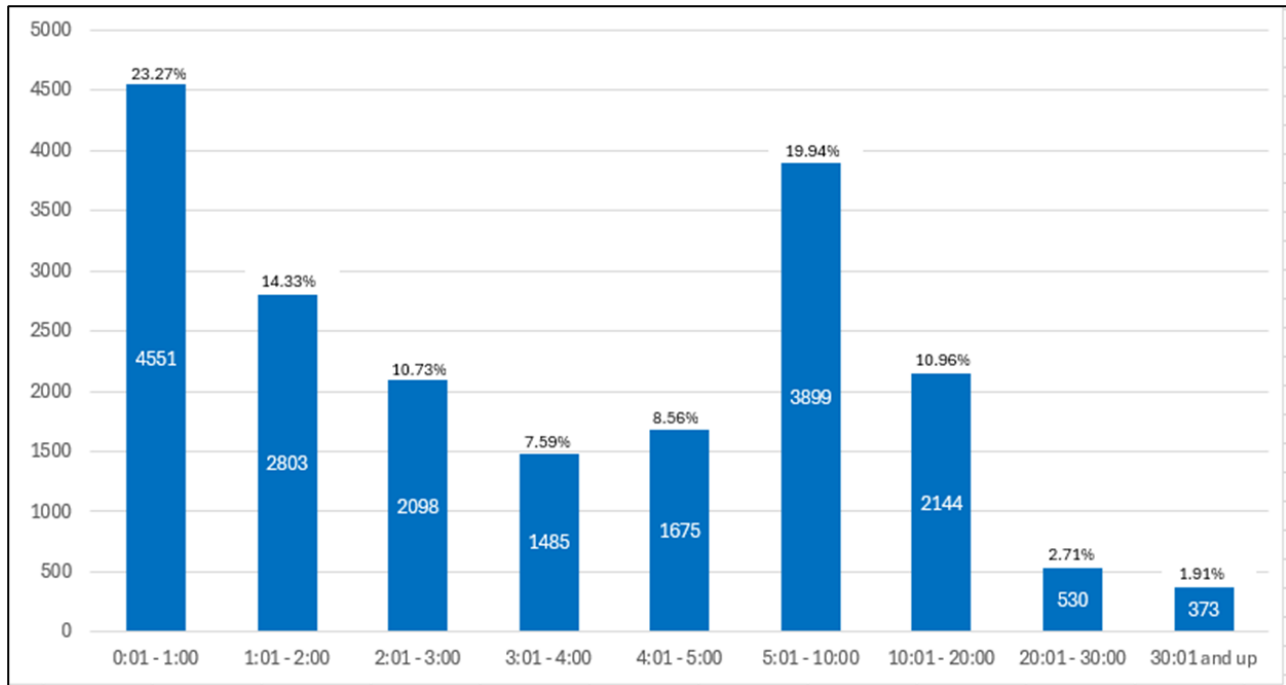
## Restraints with Injuries by Location – SY 2022-2023

Of the 2762 injuries in the 2023-2024 school year, the location of restraint where injuries occurred are listed below:



## Duration of Time per Restraints

The 19,558 restraints that occurred in the 2023-2024 school year ranged from under one minute to over 30 minutes. The chart below details the length of time of the restraint in minute increments.



## Staff Title Breakdown

LEAs identify the staff involved in the restraint through the RISC process. Additionally, the report requires information as to whether the staff were trained in a restraint system. Below is a compilation of staff involved and the number of staff that have been trained.

Note: There are duplicate staff reported in the Staff Title Breakdown Report as some reported restraints have multiple staff assisting in the process.

Staff Type	Total Count	Total Count/ Staff Member is Trained	Percentage Trained
Administrator	1585	1570	99.05%
BCBA	1641	1638	99.82%
Behavior Asst.	4674	4656	99.61%
Behavior Counselor/Specialist	6611	6600	99.83%
Behavior Mentor	1258	1256	99.84%
Behavior Therapist	1883	1873	99.47%
Bus Driver	4	4	100.00%
Cafeteria Worker	2	2	100.00%
Case Manager	249	248	99.60%
Classroom Asst.	1308	1298	99.24%
Clinical Director	612	612	100.00%
Community Integration Specialist	129	129	100.00%
Coordinator	434	434	100.00%
Counselor	1023	1013	99.02%
CPI Instructor	33	33	100.00%
Crisis Staff	634	634	100.00%
Custodian	2	2	100.00%
Dean of Students	381	374	98.16%
Director	568	567	99.82%
Gym Teacher	113	109	96.46%
Hall Monitors	28	28	100.00%
Instructional Assistant	448	448	100.00%
Job Coach	34	34	100.00%
MH employee	2108	2107	99.95%
Mobile Therapist	9	9	100.00%
Nurse	291	287	98.63%

## ANNUAL RESTRAINT INFORMATION SYSTEM COLLECTION (RISC) REPORT

### Staff Title Breakdown, continued

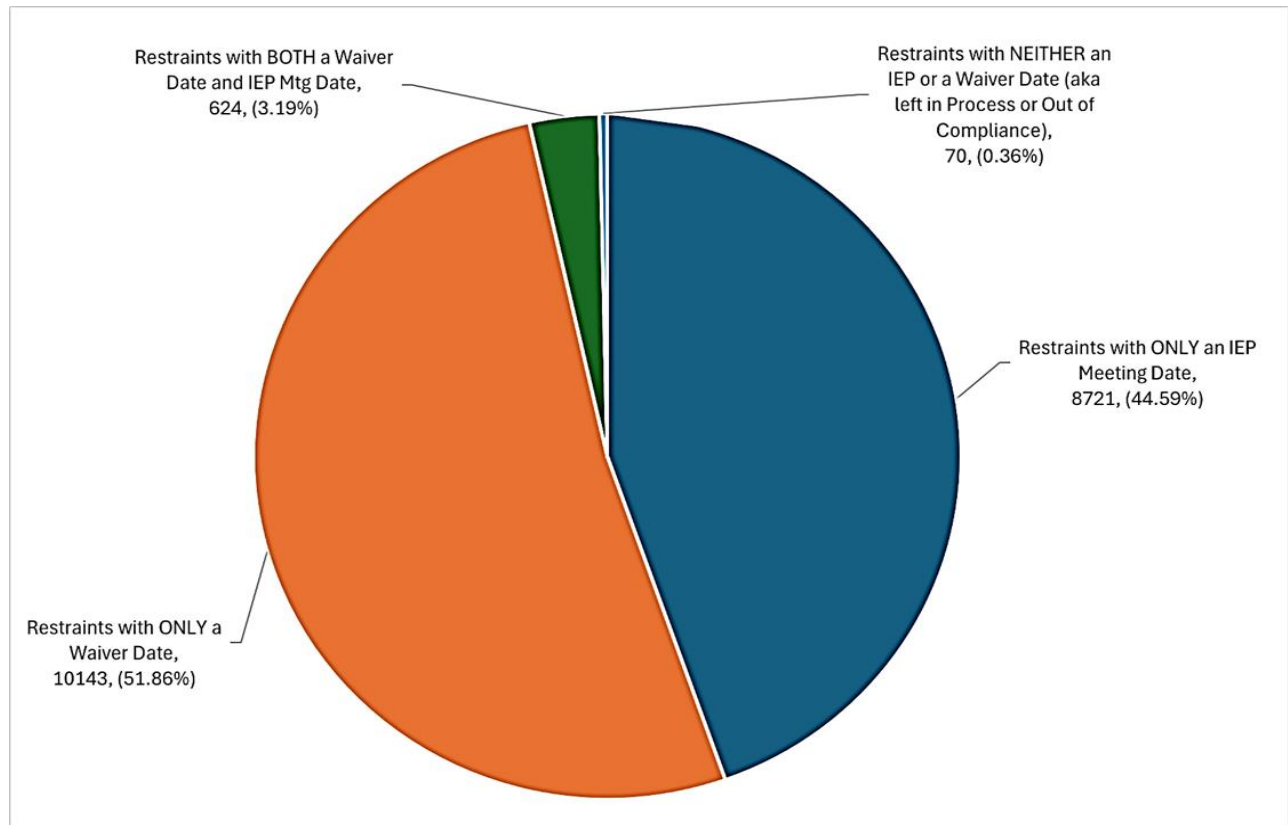
Staff Type	Total Count	Total Count/ Staff Member is Trained	Percentage Trained
One to One	110	106	96.36%
OT	482	480	99.59%
Paraprofessional	6189	6163	99.58%
Parent	4	4	100.00%
PBI Staff	425	425	100.00%
Personal Care Aide	1235	1225	99.19%
Police Officer	163	139	85.28%
Principal	1202	1192	99.17%
Principal/Assistant	493	485	98.38%
Program Coordinator	306	304	99.35%
Psychologist	195	192	98.46%
Regular Education Teacher	825	798	96.73%
RTF Direct Service Staff	301	301	100.00%
School Resource Officer	251	231	92.03%
School Secretary	72	71	98.61
School Security	341	320	93.84%
Social Worker	514	513	99.81%
Special Education Aide	913	909	99.56%
Special Education Supervisor	802	800	99.75%
Special Education Teacher	8537	8484	99.38%
Specialist	276	276	100.00%
Speech Therapist	419	418	99.76%
Student Teacher	47	47	100.00%
Substitute Teacher	65	64	98.46%
Support Aide	1592	1587	99.69%
Team Coordinator	153	153	100.00%
Therapist	405	404	99.75%
Treatment Manager	49	49	100.00%
TSS	19	17	89.47%
YDC Counselor Aide	39	39	100.00%



## Individualized Education Program (IEP) Meetings After Restraint

### IEP Meetings Held, Waived, or Left in Process

Of the 19,558 restraints, the number of waivers and IEP meetings are shown in the chart below:





Pennsylvania  
**Department of Education**

September 2024