



Pennsylvania
Department of Education

ANNUAL RESTRAINT INFORMATION SYSTEM COLLECTION (RISC) REPORT **2022-2023 School Year**



Pennsylvania
Department of Education

Commonwealth of Pennsylvania

Josh Shapiro, Governor

Department of Education

Dr. Khalid Mumin, Secretary

Office of Elementary and Secondary Education

Dr. Carrie Rowe, Deputy Secretary

Bureau of Special Education

Dr. Carole L. Clancy, Director

The Pennsylvania Department of Education (PDE) does not discriminate in its educational programs, activities, or employment practices, based on race, color, national origin, [sex] gender, sexual orientation, disability, age, religion, ancestry, union membership, gender identity or expression, AIDS or HIV status, or any other legally protected category. Announcement of this policy is in accordance with State Law including the Pennsylvania Human Relations Act and with Federal law, including Title VI and Title VII of the Civil Rights Act of 1964, Title IX of the Education Amendments of 1972, Section 504 of the Rehabilitation Act of 1973, the Age Discrimination in Employment Act of 1967, and the Americans with Disabilities Act of 1990.

The following information has been provided to handle inquiries regarding the Pennsylvania Department of Education's nondiscrimination policies:

For Inquiries Concerning Nondiscrimination in Employment:

Pennsylvania Department of Education
Equal Employment Opportunity Representative
Bureau of Human Resources
333 Market Street, 11th Floor, Harrisburg, PA 17126-0333
Voice Telephone: (717) 787-4417, Fax: (717) 783-9348

For Inquiries Concerning Nondiscrimination in All Other Pennsylvania Department of Education Programs and Activities:

Pennsylvania Department of Education
School Services Unit Director
333 Market Street, 7th Floor, Harrisburg, PA 17126-0333
Voice Telephone: (717) 783-3750, Fax: (717) 783-6802

If you have any questions about this publication or for additional copies, contact:

Pennsylvania Department of Education
Bureau of Special Education
333 Market Street, 7th Floor, Harrisburg, PA 17126-0333
Voice: (717) 783-6913, Fax: (717) 783-6139
www.education.pa.gov

All Media Requests/Inquiries: Contact the Office of Press and Communications at (717) 783-9802

Contents

Introduction.....	5
Total Number of Incidents of Restraints (by Academic Level)	6
Total Number of Unique Student Restraints (by Academic Level)	7
Total Number of Students Restrained (by Disability Category).....	8
Location Where Restraints Occurred – Disaggregated.....	9
Types of Restraints Implemented – Disaggregated	10
Injuries to Staff/Injuries to Students.....	11
Types of Restraints Resulting in Injuries	12
Restraints with Injuries by Location	13
Duration of Time per Restraints.....	14
Staff Title Breakdown.....	15
Individualized Education Program (IEP) Meetings After Restraint	17

Introduction

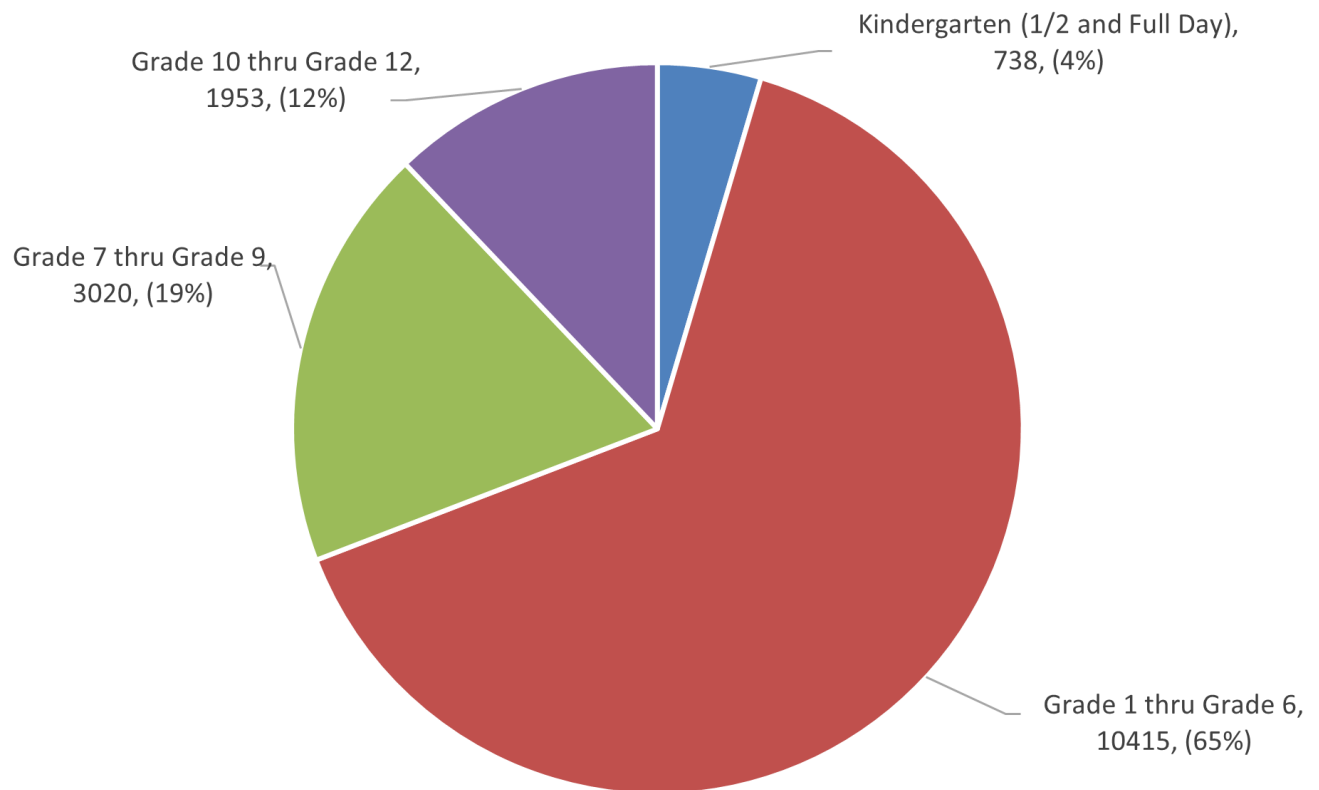
The Restraint Information System Collection (RISC) is a data collection system for all restraints across the Commonwealth of Pennsylvania occurring with school-aged students in educational programs that have an Individualized Education Program (IEP). RISC was developed by the Pennsylvania Department of Education (PDE), in conjunction with recommendations from the state Special Education Advisory Panel (SEAP). Annually, this report is presented to the Secretary of Education.

The Bureau of Special Education (BSE) closely monitors the use of positive behavior support and restraints by Local Educational Agencies (LEAs) across the Commonwealth. LEAs are required to comply with 22 Pa. Code § 14.133 (related to school entities) and 22 Pa. Code § 711.46 (related to charter schools and cyber charter schools). This includes reporting RISC data quarterly every school year. 22 Pa. Code §§ 14.133(c)(5) and 711.46(c)(5). This also includes training of personnel in specific procedures, methods, and techniques of restraint. 22 Pa. Code §§ 14.133(f) and 711.46(f). The training of personnel should provide varied intervention and strategies needed to address problem behaviors. PDE asserts the use of restraints is considered a measure of last resort, only to be used after other less restrictive measures, including de-escalation techniques. PDE utilizes the Pennsylvania Training and Technical Assistance Network (PaTTAN) and the 29 Intermediate Units to provide ongoing training to LEAs in Positive Behavior Intervention and Support programs (PBIS) and other research-based practices and techniques to develop and maintain skills that enhance an educator's ability to prevent restraints.

In conjunction with training and technical assistance, BSE also closely monitors LEA compliance with positive behavior support during the Cyclical Monitoring for Continuous Improvement (CMCI) process and conducts ongoing restraint reviews of data reported in the RISC system throughout the school year. When necessary, BSE conducts further investigation with LEAs when the following instances occur: mechanical restraints (handcuff), electric shock intervention (taser), excessive restraints lasting longer than 60 minutes, multiple injuries occurring with student and/or staff, patterns of excessive holds of a specific student, patterns of excessive holds that have not decreased over time, excessive law enforcement interventions, high waiver count without reconvening the student's IEP team, serious injury warranting a BSE investigation, law enforcement intervention without reconvening the student's IEP team, restraint of a student with an IEP who committed an incident listed in section 1303-A(b)(4.1) or (4.2) of the Safe Schools Act (22 Pa. Code § 10.23), and staff not trained in de-escalation and restraint programs.

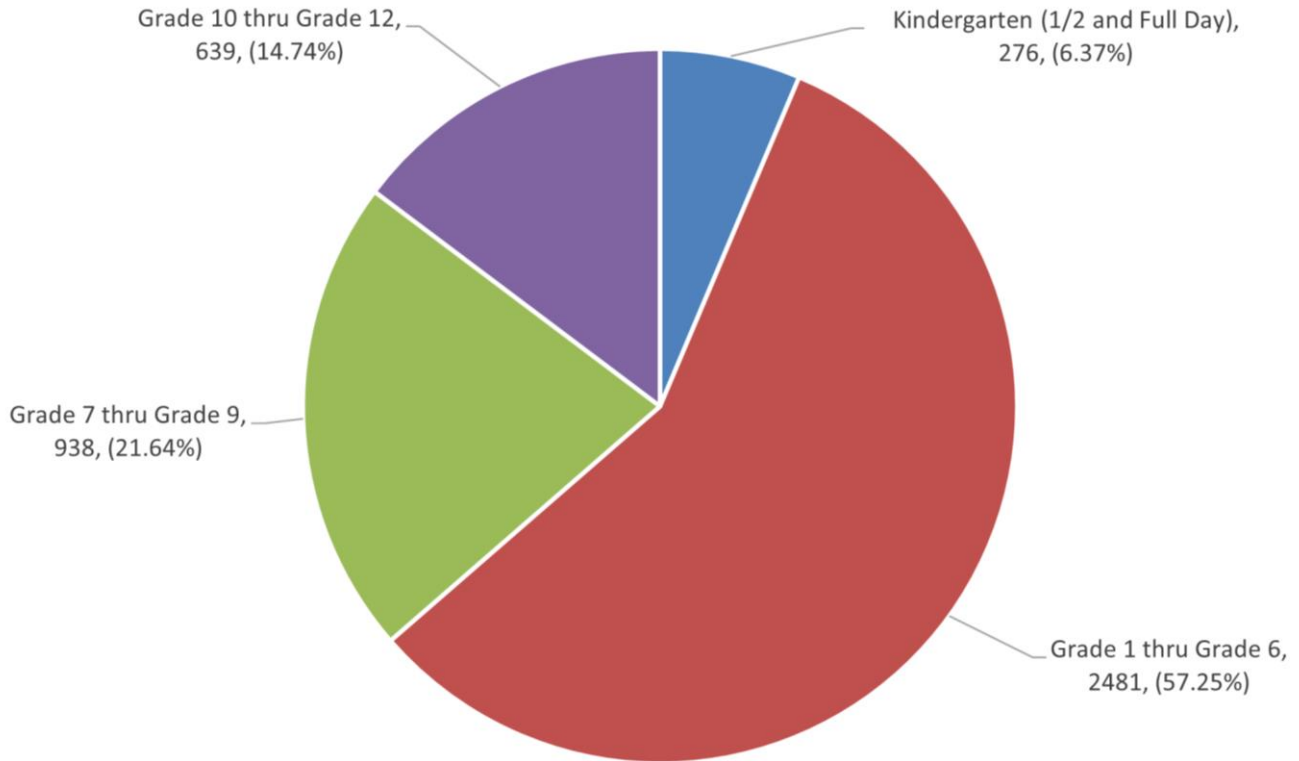
Total Number of Incidents of Restraints (by Academic Level)

The total number of restraint entries for the 2022-2023 school year was 16,126.



Total Number of Unique Student Restraints (by Academic Level)

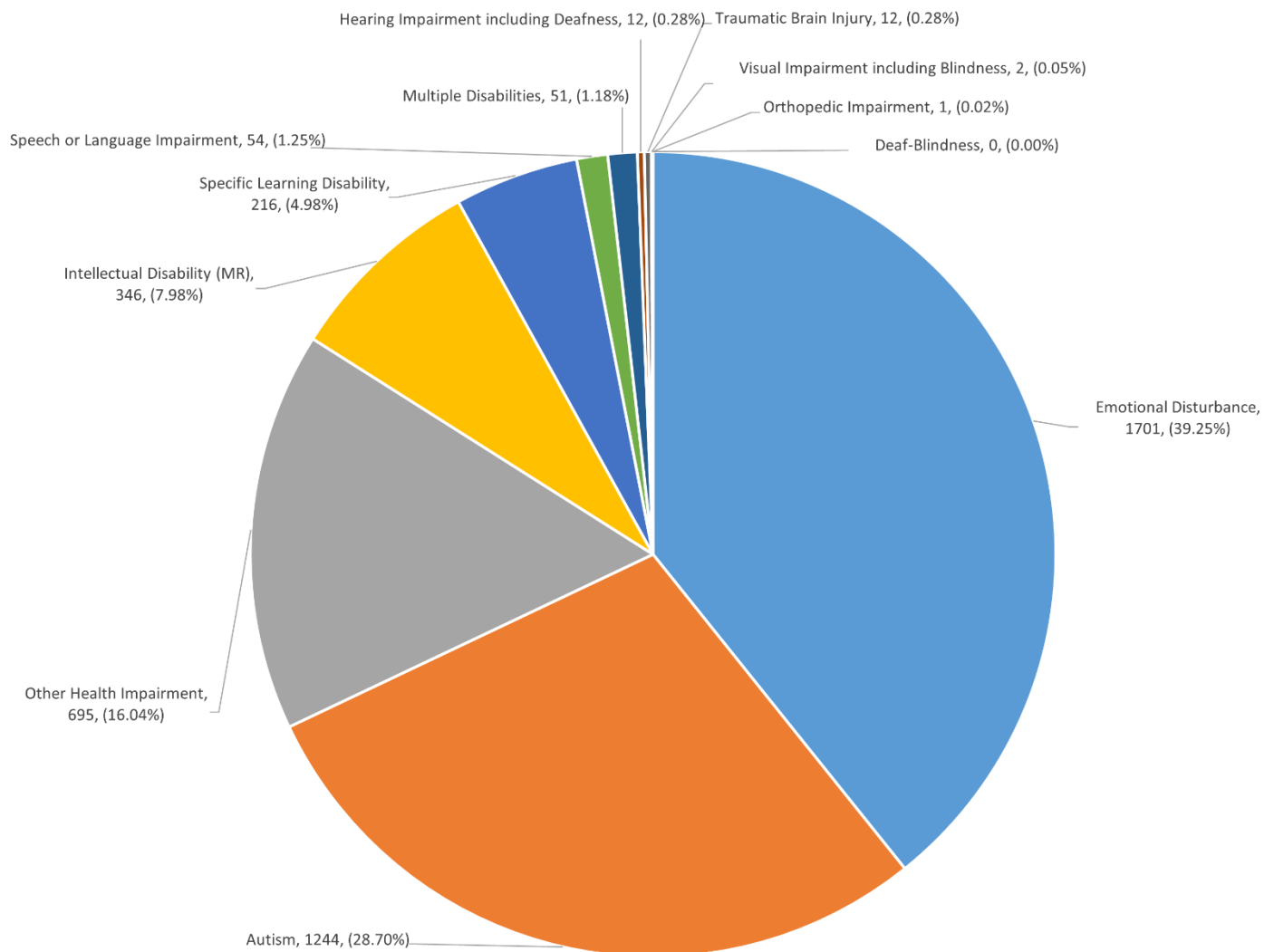
The total number of unique student restraints for the 2022-2023 school year was 4,334.



Total Number of Students Restrained (by Disability Category)

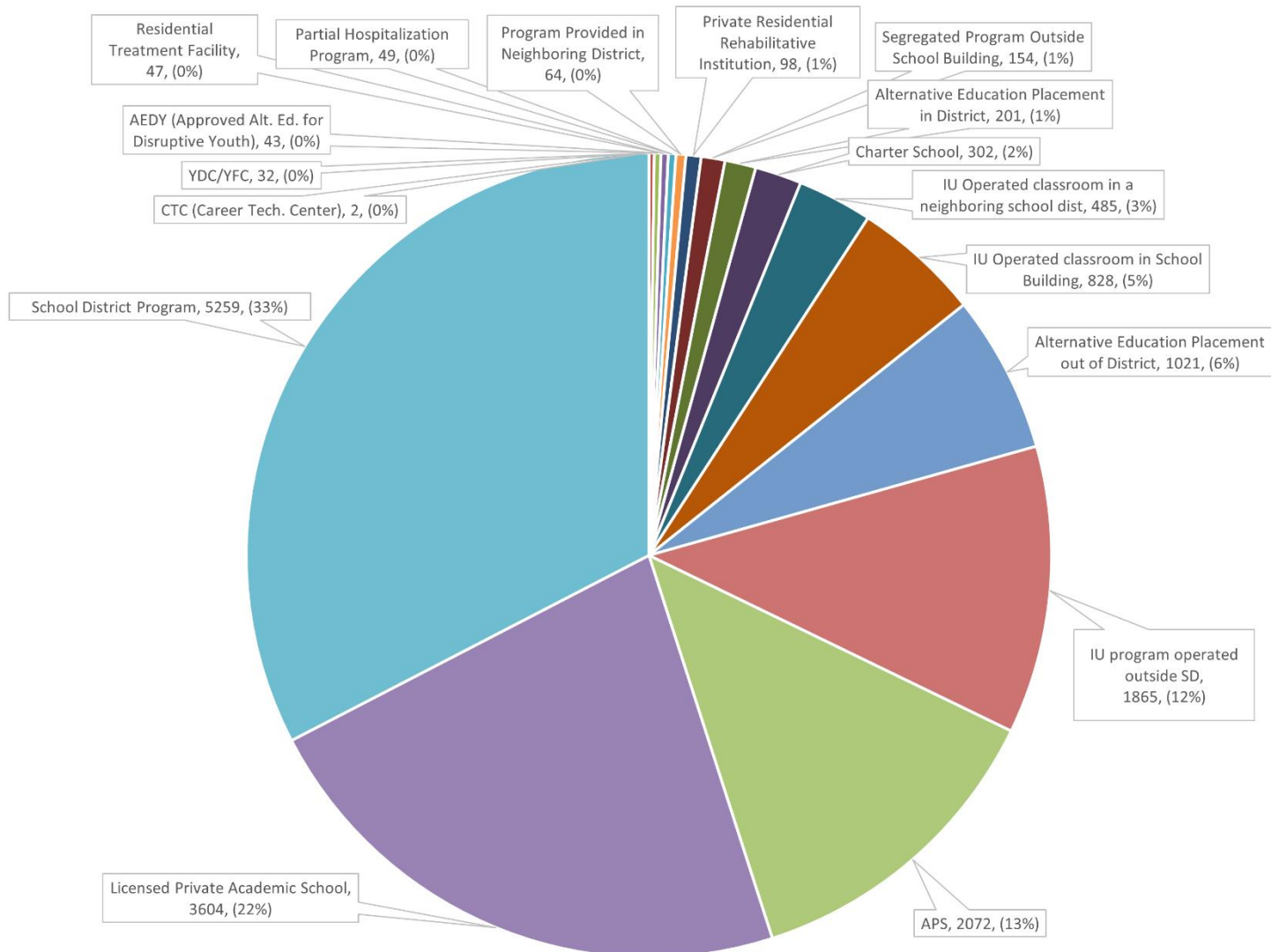
Of the 4,334 students restrained, the number of restraints by disability category is detailed below.

The total percentage of the disaggregated data points (Disability Categories) does not equal 100% as the data points were not rounded.



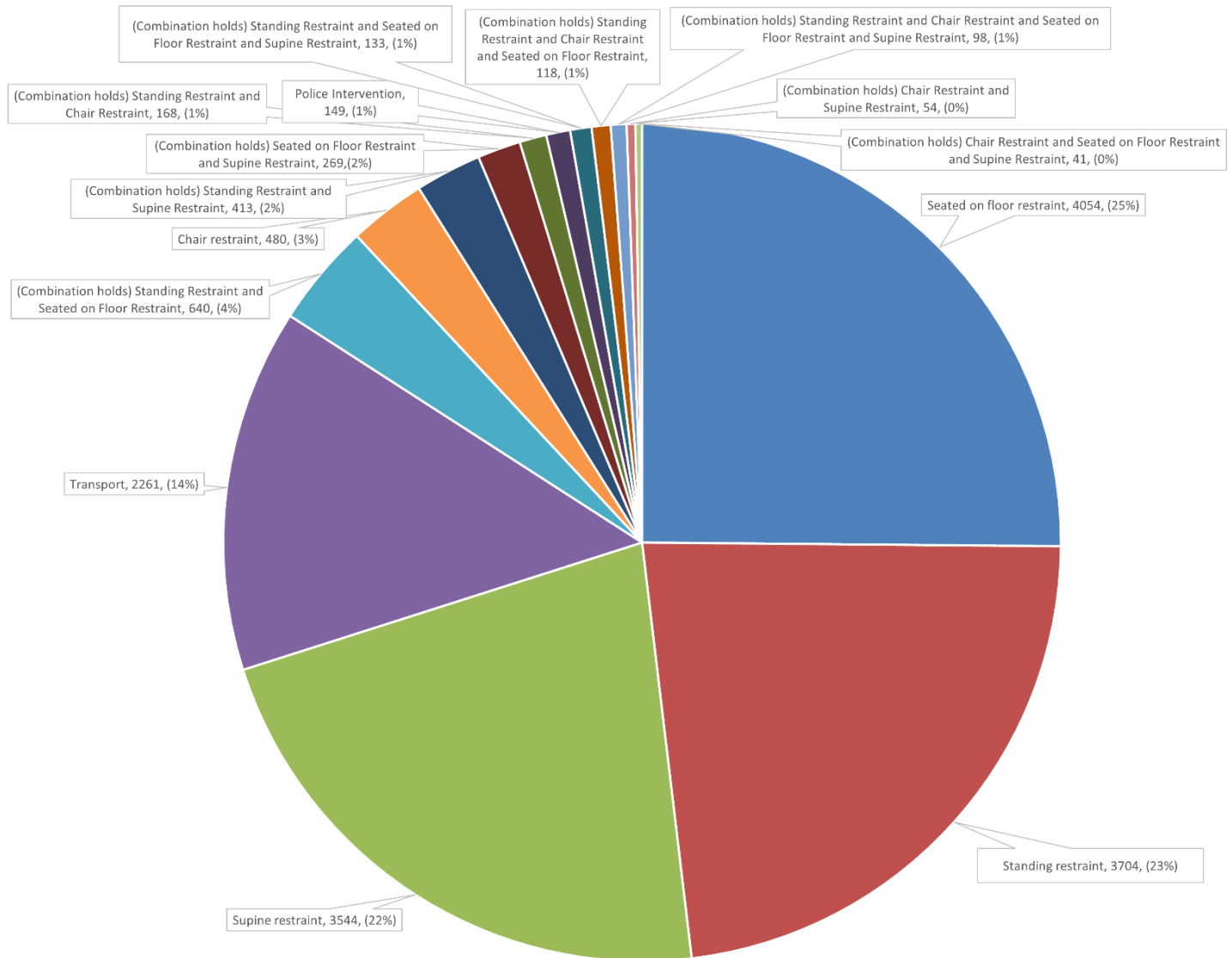
Location Where Restraints Occurred – Disaggregated

Location of the 16,126 restraints in school-age programs for the 2022-2023 school year:



Types of Restraints Implemented – Disaggregated

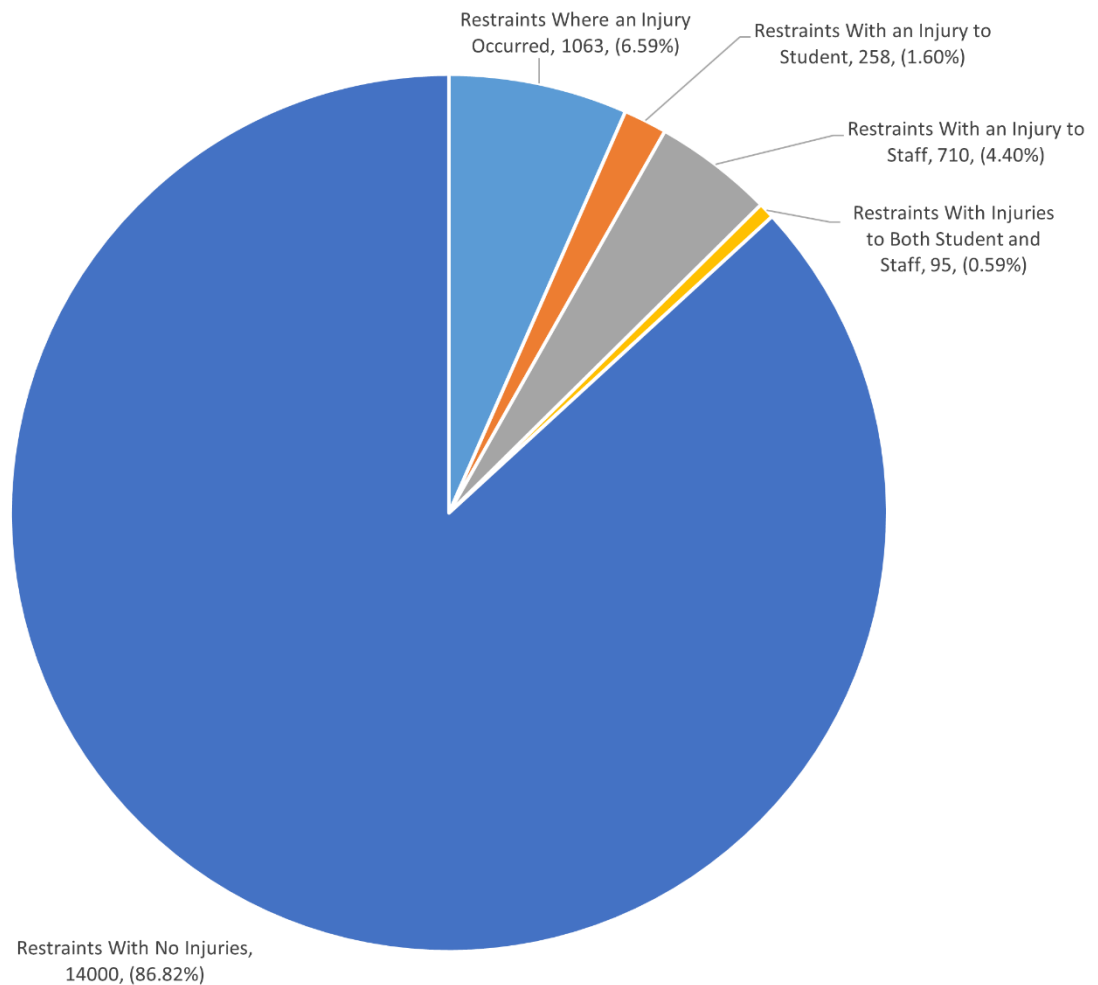
Of the 16,126 restraints, below are the types of restraints utilized:



Note: The total percentage of the disaggregated data points (Types of Restraints Implemented) does not total 100% as the data points were not rounded.

Injuries to Staff/Injuries to Students

Of the 16,126 restraints during the 2022-2023 school year, 2126 resulted in an injury (13.18%). There were 710 injuries to staff; 258 injuries to students; and 95 restraints that involved an injury to both a staff member and a student.



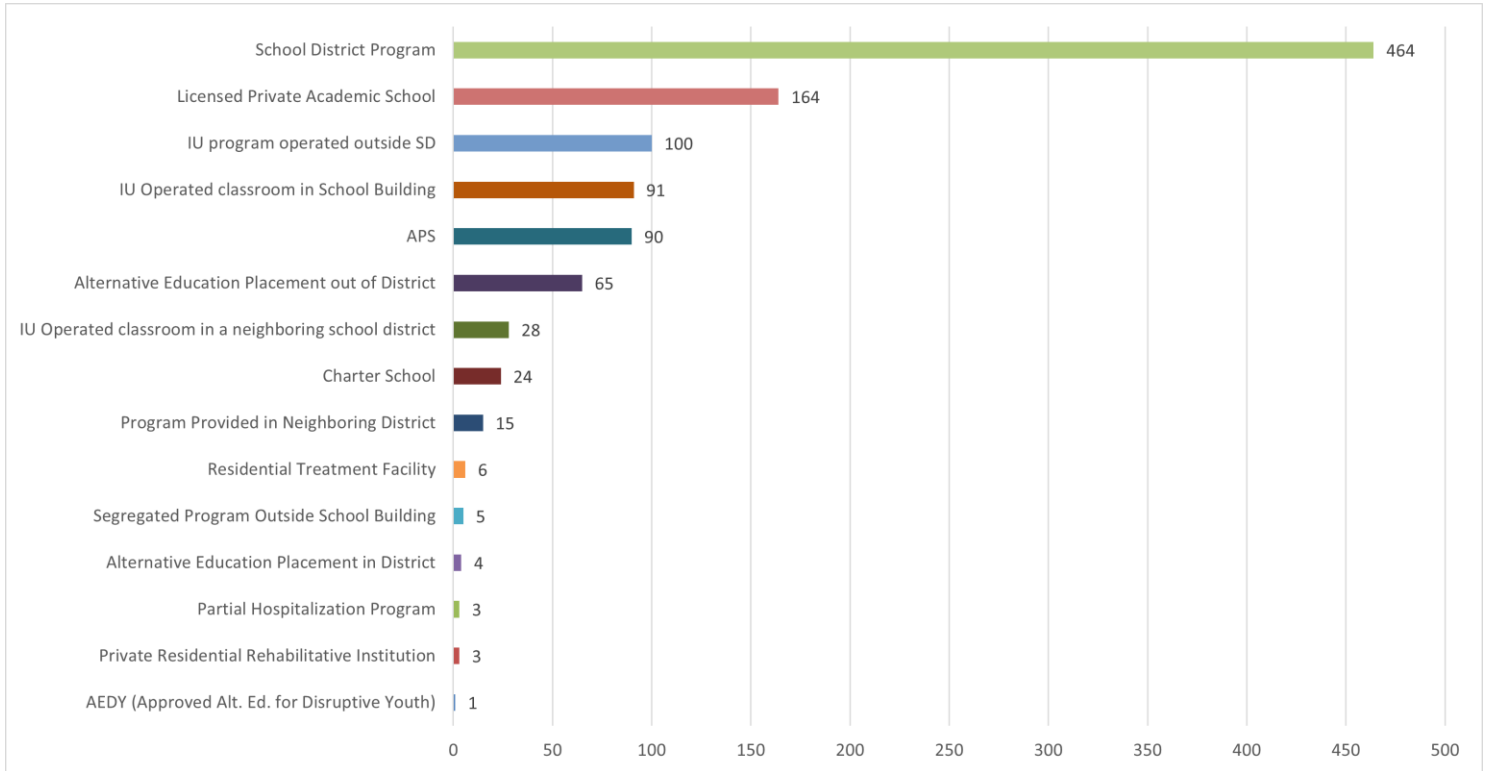
Types of Restraints Resulting in Injuries

Of the 1063 injuries to students and staff, the types of restraints utilized are outlined below:

Type of Restraint	Restraint Count	Injury to Student Only	Injury to Staff Only	Injury to Both
Seated on floor restraint	274	65	184	25
Standing restraint	238	54	170	14
Supine restraint	183	53	109	21
Transport	126	29	83	14
(Combination holds) Standing Restraint and Seated on Floor Restraint	68	20	42	6
Chair restraint	42	7	30	5
(Combination holds) Standing Restraint and Supine Restraint	29	8	16	5
(Combination holds) Seated on Floor Restraint and Supine Restraint	27	6	20	1
(Combination holds) Standing Restraint and Chair Restraint	19	5	12	2
Police Intervention	17	3	14	0
(Combination holds) Standing Restraint and Chair Restraint and Seated on Floor Restraint	14	2	11	1
(Combination holds) Standing Restraint and Seated on Floor Restraint and Supine Restraint	9	2	7	0
(Combination holds) Chair Restraint and Supine Restraint	8	2	5	1
(Combination holds) Standing Restraint and Chair Restraint and Seated on Floor Restraint and Supine	5	1	4	0
(Combination holds) Chair Restraint and Seated on Floor Restraint and Supine Restraint	4	1	3	0
TOTAL	1063	258	710	95

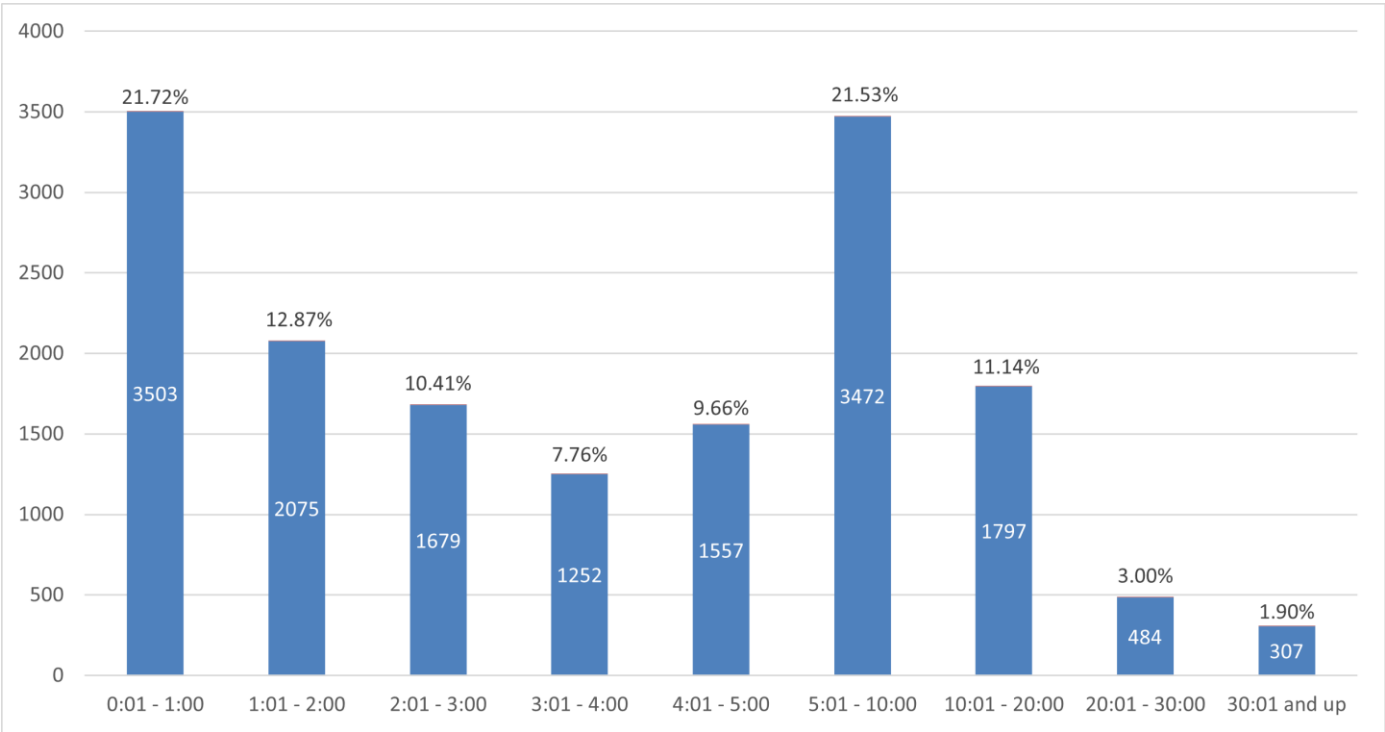
Restraints with Injuries by Location – SY 2022-2023

Of the 2126 injuries in the 2022-2023 school year, the location of restraint where injuries occurred are listed below:



Duration of Time per Restraints

The 16,126 restraints that occurred in the 2022-2023 school year ranged from under one minute to over 30 minutes. The chart below details the length of time of the restraint in minute increments.



Staff Title Breakdown

LEAs identify the staff involved in the restraint through the RISC process. Additionally, the report requires information as to whether the staff were trained in a restraint system. Below is a compilation of staff involved and the number of staff that have been trained.

Note: There are duplicate staff reported in the Staff Title Breakdown Report as some reported restraints have multiple staff assisting in the process.

Staff Type	Total Count	Total Count/ Staff Member is Trained	Percentage Trained
Administrator	1030	1015	98.54%
BCBA	1155	1154	99.91%
Behavior Asst.	3717	3716	99.97%
Behavior Counselor/Specialist	4751	4745	99.87%
Behavior Mentor	409	409	100.00%
Behavior Therapist	1817	1816	99.94%
Bus Driver	2	2	100.00%
Case Manager	189	188	99.47%
Classroom Asst.	954	950	99.58%
Clinical Director	538	538	100.00%
Community Integration Specialist	18	17	94.44%
Coordinator	377	377	100.00%
Counselor	1046	1033	98.76%
CPI Instructor	35	35	100.00%
Crisis Staff	529	529	100.00%
Custodian	4	2	50.00%
Dean of Students	352	347	98.58%
Director	524	522	99.62%
Gym Teacher	68	66	97.06%
Hall Monitors	16	15	93.75%
Instructional Assistant	279	277	99.28%
Job Coach	26	26	100.00%
MH employee	1973	1973	100.00%
Mobile Therapist	9	9	100.00%
Nurse	227	223	98.24%
One to One	149	146	97.99%

ANNUAL RESTRAINT INFORMATION SYSTEM COLLECTION (RISC) REPORT

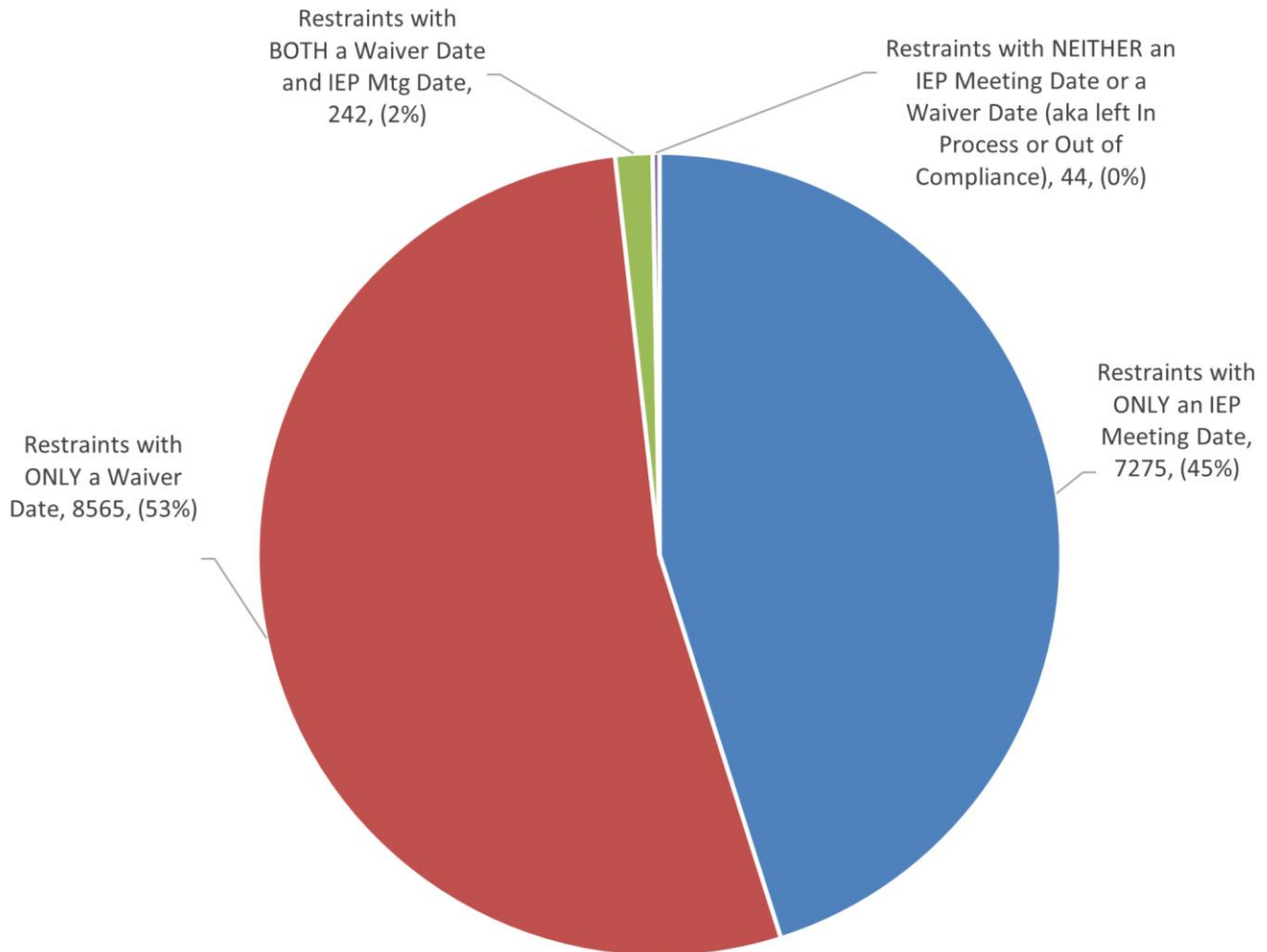
Staff Title Breakdown, continued

Staff Type	Total Count	Total Count/ Staff Member is Trained	Percentage Trained
OT	429	429	100.00%
Paraprofessional	5064	5049	99.70%
Parent	6	3	50.00%
PBI Staff	351	351	100.00%
Personal Care Aide	884	878	99.32%
Police Officer	174	156	89.66%
Principal	1089	1073	98.53%
Principal/Assistant	478	472	98.74%
Program Coordinator	322	319	99.07%
Psychologist	398	397	99.75%
Regular Education Teacher	590	560	94.92%
RTF Direct Service Staff	85	85	100.00%
School Resource Officer	176	167	94.89%
School Secretary	41	41	100.00%
School Security	374	361	96.52%
Social Worker	413	412	99.76%
Special Education Aide	1031	1030	99.90%
Special Education Supervisor	851	844	99.18%
Special Education Teacher	7378	7342	99.51%
Specialist	254	253	99.61%
Speech Therapist	382	382	100.00%
Student Teacher	89	89	100.00%
Substitute Teacher	51	47	92.16%
Support Aide	1210	1205	99.59%
Team Coordinator	216	216	100.00%
Therapist	353	353	100.00%
Treatment Manager	40	40	100.00%
TSS	20	19	95.00%
YDC Counselor Aide	61	61	100.00%

Individualized Education Program (IEP) Meetings After Restraint

IEP Meetings Held, Waived, or Left in Process

Of the 16,126 restraints, the number of waivers and IEP meetings are shown in the chart below:



Note: The above number of waivers plus the number of IEP meetings held is more than 100% as some parents signed a waiver and then additionally had an IEP meeting.

Remaining restraints were left In-Process. This means more information was needed at the time of this report in the required fields of the individual restraint report and the LEA had not yet fulfilled the process. The In-Process restraint report can still be read by the BSE adviser.



Pennsylvania
Department of Education