

Commonwealth of Pennsylvania 2022 Child Care Market Rate Survey

Summary Report

December 2022



PennState
Harrisburg

Institute of State
and Regional Affairs

Submitted to:

Shante' Brown
Acting Deputy Secretary, Pennsylvania Office of Child Development & Early Learning

Principal Investigator

Philip Sirinides, Ph.D.
Associate Professor of Education
Director, Institute of State and Regional Affairs
Penn State Harrisburg
pzs5539@psu.edu

Contributors

Institute of State and Regional Affairs
Steph Wehnau, M.S.
Nicole Sturges
Neil Shook
Ellory Dabbs, M.A.
Kristina Diefenderfer, M.S.
Michael Flasher

The Pennsylvania Key
Marnie Aylesworth, D.Ed.
Colin Day

Acknowledgments

We are grateful to staff at OCDEL and The Pennsylvania Key who provided input and guidance, the team at the Institute of State and Regional Affairs who reviewed earlier versions of this report, and to the many child care providers who participated in the 2022 Market Rate Survey.

About the Institute of State and Regional Affairs (ISRA)

Since 1973, ISRA has supported academic researchers, government agencies, non-profit organizations, and private industry with research, data services, and training. The Institute of State and Regional Affairs unites researchers and data specialists from the Center for Survey Research and the Pennsylvania State Data Center to complete complex data collection, management, and analysis. Its projects benefit from Penn State's institutional resources, highly skilled staff, and technological infrastructure to support multiple complex research efforts, including the ability to store project data on secure servers. ISRA has a strong, unrivaled commitment to applied social science research and public service focused on Pennsylvania's communities. To learn more about ISRA, visit our website at isra.hbg.psu.edu.

Table of Contents

Section 1: Market Rate Survey Background	1
Section 2: Market Rate Survey Plan and Administration	2
Section 3: Market Rate Survey Results	5
Section 4: Summary	9
Appendix A. Pennsylvania Early Learning Resource Center (ELRC) Regions	10
Appendix B. Current Maximum Child Care Allowance (MCCA) Percentiles	11

Table of Figures

Figure 1. Percentage of Maximum Child Care Allowances (MCCAs) by Percentile.....	8
--	---

Table of Tables

Table 1: Market Rate Survey Activity Timeline.....	2
Table 2. Tuition Rate Conversions	4
Table 3. Child Care Provider Characteristics and Response Rates	6
Table 4. Percentage of Maximum Child Care Allowances (MCCAs) Percentiles by Provider Type	8

Section 1: Market Rate Survey Background

The Pennsylvania Department of Human Services, Office of Child Development and Early Learning (OCDEL) is the lead agency for the implementation of the Child Care Development Fund (CCDF) program. The CCDF program provides resources to States, Indian tribes, and territories to enable low-income parents to work, and in some cases, pursue education/training so that they can better support their families while promoting positive child development outcomes. Pennsylvania supports the initiative through a subsidized child care program known as Child Care Works (CCW).

Activities implemented through the CCDF program are authorized under the Child Care Development and Block Grant of 2014 (CCDBG). Section 658E(c)(4) of CCDBG, and accompanying CCDF regulations at 45 CFR Part 98, require OCDEL to certify that CCW base rates are sufficient to ensure equal access as compared to families paying private tuition. The payment rates, also known as the Maximum Child Care Allowances (MCCAs) or base subsidy rates, are established by OCDEL in regulation and disaggregated by region as well as care-level, provider type, and type of care (i.e. part-time vs. full-time). CCDF regulations require OCDEL to either 1) conduct a market rate survey (MRS) of child care providers every three years or 2) utilize a pre-approved alternative methodology to affirm low-income families are provided equal access. To meet this requirement, OCDEL partnered with the Institute of State and Regional Affairs at Penn State Harrisburg (the ISRA team) and The Pennsylvania Key (PA Key) to conduct an MRS between July 11, 2022, and October 11, 2022.

An MRS is the collection and analysis of rates charged by child care providers in an open market, where the parents/guardians and the provider do not have a relationship that could affect the charged amount. A well-planned and conducted MRS provides quantitative insight into provider business practices and prices by location, setting, children's ages, and the time children are in care. The purpose is to guide state agencies, such as OCDEL, in setting base subsidy rates within the context of market conditions so they are sufficient to provide equal access to low-income families served in the CCW program. The 75th percentile of private pay tuition rates was established as a benchmark for CCDF by the preamble to the 1998 Final Rule (63 FR 39959); the federal Office of Child Care (OCC) considers base subsidy rates set at or above the benchmark as providing equal access.

Following the completion of a MRS, OCDEL is required to issue a publicly available report detailing the results. The following analysis is provided to meet the requirement. Additional information and guidance on market rate surveys, rate setting requirements of CCDBG, and other related topics can be found on the OCC webpage.

Section 2: Market Rate Survey Plan and Administration

From April to June 2022, OCDEL and ISRA developed an MRS strategy that would maximize participation from Pennsylvania’s child care provider community. In addition to collecting full-time and part-time private tuition rates, the MRS included questions about staffing, enrollment, payments and fees, and operations to provide additional context to the private pay tuition rates and supplement an additional cost of care analysis.

Three options for completing the 2022 MRS were offered: 1) return a paper survey in the mail using a pre-paid envelope, 2) complete the survey online using an individualized survey link, or 3) share information via telephone. The survey was available to providers in both English and Spanish. This multipronged approach allowed child care providers to participate in a way that was most convenient and accessible to them.

As a thank you for participating, providers that completed the MRS could enter an optional drawing for one of 100 gift cards. To promote early participation, providers could triple their chances to win by completing the survey by September 1, 2022. Winning providers were selected at the conclusion of the survey in October, and the ISRA team emailed gift cards in early November.

To encourage participation, a variety of strategies were used to contact non-responding providers during the survey fielding period. This included sending up to two paper surveys and up to three emails with the provider’s unique web survey link. The ISRA team also called all non-responding providers to give them the opportunity to complete the survey over the phone, answer questions, or identify an email address for sending the web survey link. Table 1 includes a detailed MRS activity timeline. Throughout the survey fielding period, the ISRA team helped providers access and complete their survey through a project email address and toll-free phone number. The survey fielding period ran from July 11 to October 11, 2022.

Table 1: Market Rate Survey Activity Timeline

DATE(S)	MRS ACTIVITY
JULY 6, 2022	Mailing #1 sent to 6,562 providers
JULY 11, 2022	Mailing #1 received by providers / survey launched
AUGUST 17, 2022	Mailing #2 sent to 5,167 providers
AUGUST 22, 2022	Mailing #2 received by providers
AUGUST 23, 2022	Email #1 sent to 4,901 providers
SEPTEMBER 8, 2022	Email #2 sent to 3,610 providers
SEPTEMBER 9 – OCTOBER 6, 2022	Phone calls to approx. 3,000 non-responding providers
SEPTEMBER 21, 2022	Email #3 sent to 2,843 providers
OCTOBER 11, 2022	Survey closed

OCDEL also utilized a robust communications strategy to notify providers of the importance of MRS participation. In addition to the ISRA team's efforts as noted above, OCDEL and various partners also promoted the survey in the following ways:

- The Pennsylvania Key posted and shared MRS information on their website
- Announcements were sent to subscribers of the following newsletters:
 - PA Early Ed News
 - July 2022 (pre-survey notification)
 - August 2022
 - September 2022
 - October 2022
 - OCDEL Early Childhood Education (ECE) Recaps
 - July 11, 2022
 - July 18, 2022
 - July 25, 2022
 - August 1, 2022
 - August 15, 2022
 - August 22, 2022
 - August 29, 2022
 - September 12, 2022
 - September 19, 2022
 - September 26, 2022
 - October 3, 2022
 - October 10, 2022
 - Certification Services News
 - August 31, 2022
- Social media releases between July and October 2022 via the following accounts:
 - PA Promise for Children (Facebook)
 - PD Registry (Facebook)
 - PA Promise for Children (Twitter)
 - PA Promise for Children (LinkedIn)
- Various communication efforts from community partners, including:
 - Early Learning Resource Centers
 - Pennsylvania Child Care Association (PACCA)
 - Child Care Professionals Network
 - First Up: Champions for Early Education
 - Trying Together
 - First Up
- The ISRA team presented at Pennsylvania Child Care Association's (PACCA) Webinar on August 18, 2022, entitled *2022 Market Rate Survey and YOU*

At the conclusion of the survey fielding period, the ISRA team conducted a thorough data preparation process, which included the following steps:

- Partial responses, in which the provider filled out a portion of the survey but did not reach the end, were included as a valid response if they completed the private pay tuition rate section.
- Survey responses that were submitted but did not provide any tuition rates were not included as valid responses in the final dataset.
- Providers that responded to the MRS but were no longer operating at the end of the survey period were not included as a valid response. Of the 6,562 providers that were operating in June 2022, when the initial survey list was developed, 184 were no longer operating by the end of the survey period in October 2022, leaving 6,378 providers in operation throughout the entire survey period.
- Providers that supplied multiple tuition rates or submitted duplicate survey responses were examined and the highest tuition rates were included in the final dataset (per survey instructions) for each rate supplied.
- Tuition rates that were clearly reported in error (e.g., incorrect daily, weekly, or monthly unit selected; rates that did not match those that were requested) were inspected closely. The ISRA team followed up directly with a number of providers to ensure that reported rates were accurate. In cases where the provider could not be contacted or where rates were clearly erroneous, rates were excluded from the final dataset.

After the data preparation procedure was completed, all private pay tuition rates reported by providers were converted to a daily equivalent using the conversions in Table 2. These are conversion rates which are currently utilized in OCDEL’s PELICAN system. Note that while the survey only offered options for providing daily, weekly, or monthly tuition rates, some providers instead wrote their hourly or yearly rates on the survey.)

Table 2. Tuition Rate Conversions

REPORTED RATE	CONVERSION TO DAILY EQUIVALENT
HOURLY (PART-TIME)	Multiply by 4.5
HOURLY (FULL-TIME)	Multiply by 9
DAILY	No conversion needed
WEEKLY	Divide by 5
MONTHLY	Divide by 21.67
YEARLY	Divide by 260

The final daily equivalent tuition rates were used for the analyses in the remainder of this report.

Section 3: Market Rate Survey Results

Provider Details

A total of 4,383 child care providers participated in the 2022 MRS. Of the providers that responded, 2,324 (53.0%) completed the survey online, 1,537 (35.1%) participated via paper survey, 485 (11.1%) shared their information over the telephone, and 37 (0.8%) sent their survey in some other way (e.g., scanned and delivered via email; sent to Early Learning Resource Center and was forwarded to ISRA).

Overall, **68.7%** of providers in operation during the entire survey period (4,383 out of 6,378) participated.

Table 3 summarizes the key characteristics of the providers participating in the MRS, including provider type, Keystone STARS designation, Early Learning Resource Center (ELRC) region, and whether the provider currently has a Child Care Works (CCW) agreement. A CCW agreement permits certified providers (e.g. Family Child Care Homes, Group Child Care Homes, Child Care Centers) to serve children enrolled in the CCW subsidy child care program. A map of Pennsylvania's 19 ELRC regions appears in Appendix A.

As seen in Table 3, in addition to achieving a 68.7% overall participation rate, more than 50% of providers from each of these key attributes participated in the MRS.

Table 3. Child Care Provider Characteristics and Response Rates

	Number of MRS Responses	Percentage of MRS Responses	Number of Providers Statewide	MRS Response Rate
All Providers	4,383	---	6,378	68.7%
Provider Type				
Child Care Centers	3,268	74.6%	4,645	70.4%
Group Child Care Homes	399	9.1%	607	65.7%
Family Child Care Homes	716	16.3%	1,126	63.6%
Keystone STARS Designation				
STAR 1 / No STAR level	2,185	49.9%	3,447	63.4%
STAR 2	803	18.3%	1,120	71.7%
STAR 3	264	6.0%	357	73.9%
STAR 4	1,131	25.8%	1,454	77.8%
ELRC Region				
Region 1	160	3.7%	227	70.5%
Region 2	89	2.0%	111	80.2%
Region 3	138	3.1%	190	72.6%
Region 4	190	4.3%	234	81.2%
Region 5	403	9.2%	588	68.5%
Region 6	184	4.2%	254	72.4%
Region 7	72	1.6%	84	85.7%
Region 8	115	2.6%	136	84.6%
Region 9	286	6.5%	372	76.9%
Region 10	302	6.9%	422	71.6%
Region 11	159	3.6%	197	80.7%
Region 12	170	3.9%	215	79.1%
Region 13	141	3.2%	185	76.2%
Region 14	287	6.5%	388	74.0%
Region 15	188	4.3%	296	63.5%
Region 16	201	4.6%	269	74.7%
Region 17	313	7.1%	415	75.4%
Region 18	823	18.8%	1,567	52.5%
Region 19	162	3.7%	228	71.1%
Child Care Works (CCW) Agreement				
Has CCW agreement	4,044	92.3%	5,759	70.2%
Does not have agreement	339	7.7%	619	54.8%

Private Pay Tuition Rates

Each provider's highest full-time and part-time private pay tuition rate by care level was captured. Matching the definitions in OCDEL's PELICAN system, the MRS defined full-time care as five or more hours of care per day (one or more days each week) and part-time as less than five hours of care per day (one or more days each week). If providers offered multiple tuition rates (e.g., families can choose to pay daily or monthly; there are different rates during the school year and the summer), providers were instructed to enter the rate that is the highest.

The private pay tuition rates collected in the MRS were compared to the current MCCAs (base subsidy rates). MCCAs vary by ELRC region, provider type, care level, and type of care (full-time or part-time), yielding 570 unique rates¹ throughout the commonwealth. Each current MCCA was analyzed in relation to the private pay tuition rates reported on the MRS to determine which percentile each MCCA met. Percentiles were calculated by determining the percentage of private pay tuition rates that were at or below a given MCCA. For example, if 55 percent of the private pay tuition rates collected on the MRS were at or below the MCCA, the MCCA was calculated as meeting the 55th percentile.

Figure 1 displays the distribution of percentiles for each of the 570 current MCCAs. Although OCC considers payment rates set at or above the 75th percentile as providing equal access, a majority of MCCAs did not meet the threshold. Approximately one-quarter (27.0%) of MCCAs met at least the 50th percentile of current private pay tuition rates.

¹ Relative child care providers also have unique MCCAs, though these providers are not included in the MRS and are therefore not included in this analysis.

Figure 1. Percentage of Maximum Child Care Allowances (MCCAs) by Percentile

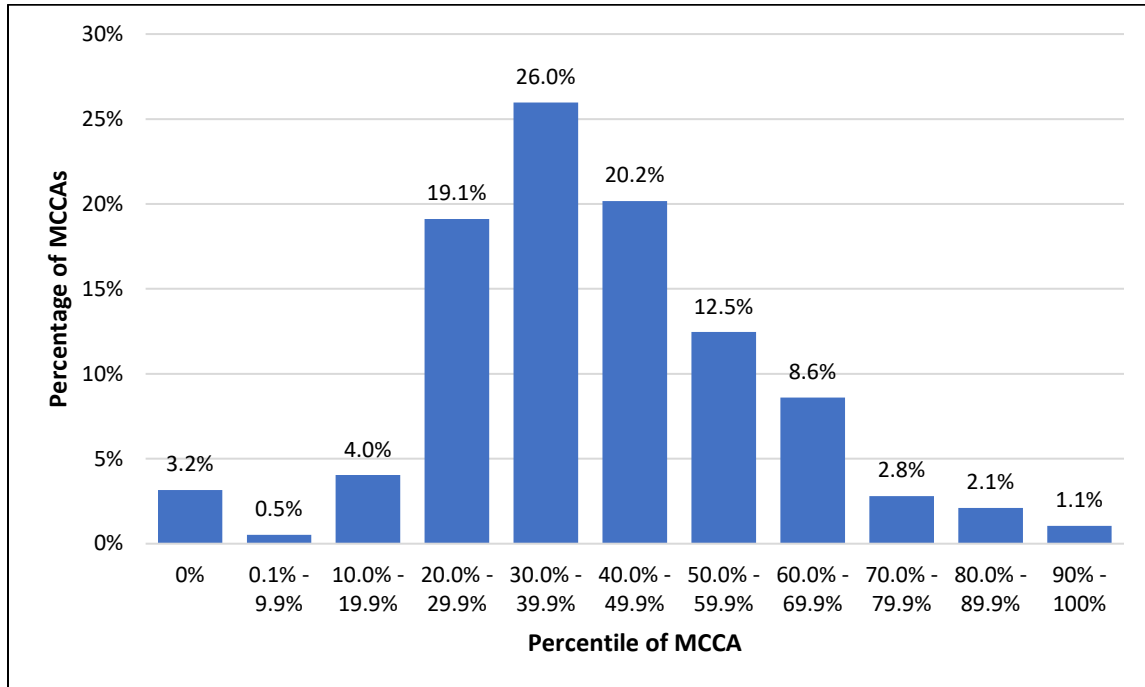


Table 4 shows the percentage of MCCAs by percentile and provider type. MCCA percentiles are generally consistent across the three provider types, with only 23.7% of Child Care Center MCCAs, 29.5% of Group Child Care Home MCCAs, and 27.9% of Family Child Care Home MCCAs meeting the 50th percentile or above. A full table of all current MCCA rates and percentiles can be found in Appendix B.

Table 4. Percentage of Maximum Child Care Allowances (MCCAs) Percentiles by Provider Type

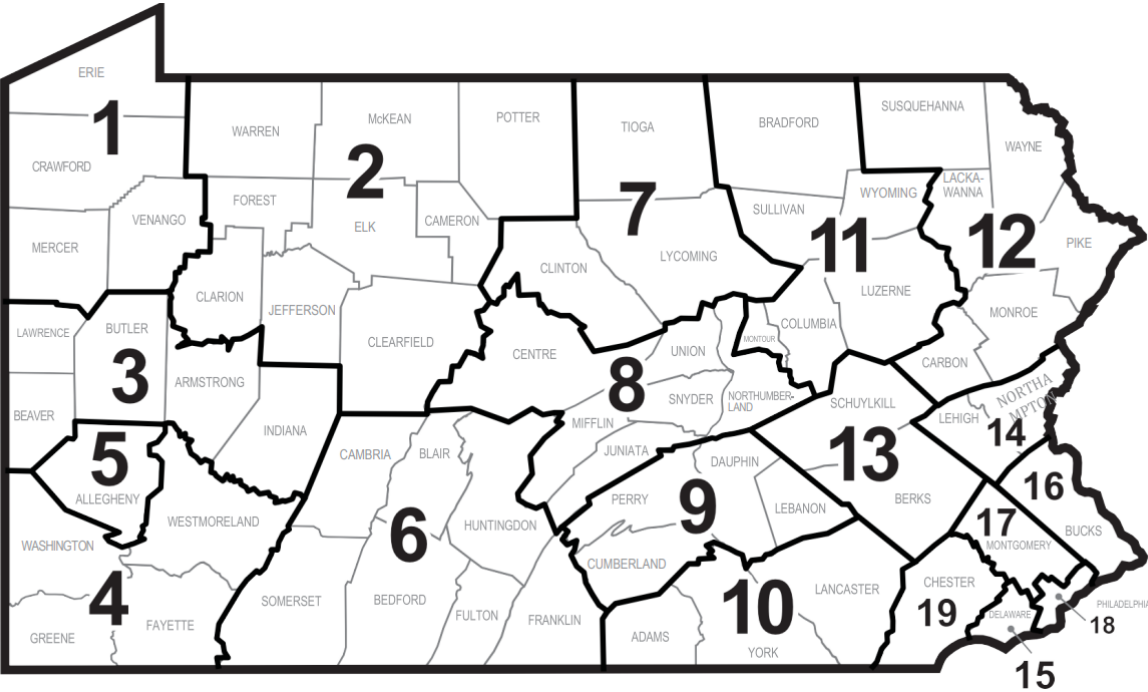
MCCA Percentile	All MCCAs	Child Care Center MCCAs	Group Child Care Home MCCAs	Family Child Care Home MCCAs
0%	3.2%	0.0%	8.9%	0.5%
0.1% - 9.9%	0.5%	0.0%	0.0%	1.6%
10.0% - 19.9%	4.0%	1.1%	5.3%	5.8%
20.0% - 29.9%	19.1%	17.9%	19.5%	20.0%
30.0% - 39.9%	26.0%	31.1%	20.0%	26.8%
40.0% - 49.9%	20.2%	26.3%	16.8%	17.4%
50.0% - 59.9%	12.5%	11.6%	12.1%	13.7%
60.0% - 69.9%	8.6%	9.5%	7.4%	8.9%
70.0% - 79.9%	2.8%	2.1%	3.7%	2.6%
80.0% - 89.9%	2.1%	0.5%	3.2%	2.6%
90% - 100%	1.1%	0.0%	3.2%	0.0%

Section 4: Summary

The results of the 2022 MRS provide insight into evaluating the current MCCAs to providers serving CCW enrollments, but also the level to which low-income families in the program have equal access to child care. ISRA recommends that OCDEL utilize the results to inform MCCA rate changes in the future.

In addition to private pay tuition rates, the MRS collected provider data on staffing, enrollment, payments/fees, and operations. These indicators, along with a parallel Narrow Cost Analysis of child care, will be analyzed and included in a comprehensive final report.

Appendix A. Pennsylvania Early Learning Resource Center (ELRC) Regions



Appendix B. Current Maximum Child Care Allowance (MCCA) Percentiles

ELRC Region	Type		Infant		Younger toddler		Older toddler		Preschool		School-age	
			MCCA	Perc.	MCCA	Perc.	MCCA	Perc.	MCCA	Perc.	MCCA	Perc.
Region 1	CCC	FT	\$40.00	34.25%	\$39.00	34.67%	\$38.00	34.67%	\$35.00	37.23%	\$32.20	43.84%
		PT	\$37.00	42.31%	\$35.00	42.59%	\$34.00	42.59%	\$32.00	57.35%	\$25.00	40.00%
	GCCH	FT	\$35.00	50.00%	\$34.00	42.11%	\$33.00	40.00%	\$31.60	40.00%	\$30.00	38.89%
		PT	\$28.00	47.06%	\$28.00	58.82%	\$26.00	41.18%	\$26.00	35.29%	\$25.00	50.00%
	FCCH	FT	\$30.00	51.28%	\$30.00	58.54%	\$30.00	59.52%	\$28.00	39.02%	\$27.91	39.47%
		PT	\$24.00	37.93%	\$23.00	33.33%	\$22.00	32.26%	\$21.00	35.48%	\$20.00	35.48%
Region 2	CCC	FT	\$31.50	34.21%	\$30.60	37.50%	\$30.05	46.51%	\$28.00	40.00%	\$26.09	28.95%
		PT	\$29.00	65.52%	\$27.00	70.97%	\$26.00	72.73%	\$22.50	60.00%	\$20.30	63.64%
	GCCH	FT	\$30.39	57.14%	\$30.39	57.14%	\$30.39	57.14%	\$30.39	62.50%	\$27.00	57.14%
		PT	\$26.00	50.00%	\$26.00	60.00%	\$26.00	60.00%	\$26.00	63.64%	\$20.00	58.33%
	FCCH	FT	\$25.27	29.17%	\$25.27	40.00%	\$25.00	46.15%	\$25.00	48.15%	\$25.00	53.85%
		PT	\$20.00	50.00%	\$20.00	60.00%	\$20.00	61.90%	\$20.00	63.64%	\$20.00	65.22%
Region 3	CCC	FT	\$39.00	27.47%	\$38.00	29.03%	\$37.00	25.81%	\$36.00	33.68%	\$35.00	50.57%
		PT	\$32.00	51.79%	\$32.00	52.54%	\$30.00	49.15%	\$29.25	46.88%	\$25.00	50.75%
	GCCH	FT	\$36.00	41.67%	\$35.00	41.67%	\$33.00	41.67%	\$32.00	41.67%	\$32.00	50.00%
		PT	\$30.00	33.33%	\$30.00	33.33%	\$29.00	37.50%	\$29.00	33.33%	\$24.60	33.33%
	FCCH	FT	\$32.50	52.38%	\$30.03	45.83%	\$30.03	53.85%	\$30.00	60.00%	\$30.00	63.16%
		PT	\$25.42	37.50%	\$25.00	50.00%	\$25.00	57.89%	\$25.00	60.00%	\$25.00	66.67%
Region 4	CCC	FT	\$43.50	32.76%	\$40.20	36.00%	\$40.00	37.01%	\$38.00	41.54%	\$36.00	44.19%
		PT	\$36.00	44.59%	\$35.00	44.44%	\$34.40	39.76%	\$32.00	47.67%	\$25.00	45.00%
	GCCH	FT	\$35.00	54.55%	\$34.00	45.45%	\$33.47	54.55%	\$31.21	45.45%	\$29.98	27.27%
		PT	\$25.42	25.00%	\$25.42	25.00%	\$25.42	37.50%	\$25.27	50.00%	\$25.27	100.00%
	FCCH	FT	\$35.00	36.00%	\$35.00	36.00%	\$32.50	32.00%	\$32.50	32.00%	\$32.50	37.50%
		PT	\$25.00	28.57%	\$25.00	33.33%	\$25.00	47.62%	\$25.00	42.86%	\$23.00	14.29%
Region 5	CCC	FT	\$50.00	30.26%	\$47.34	26.05%	\$45.80	26.53%	\$43.00	31.95%	\$40.00	40.18%
		PT	\$41.00	36.51%	\$39.40	35.11%	\$38.00	38.19%	\$34.50	40.37%	\$27.00	44.39%
	GCCH	FT	\$39.00	21.62%	\$36.00	28.21%	\$35.00	28.21%	\$34.00	23.08%	\$33.00	35.14%
		PT	\$31.65	24.24%	\$30.00	32.35%	\$29.80	26.47%	\$28.00	35.29%	\$27.00	42.42%
	FCCH	FT	\$35.00	42.50%	\$33.00	29.27%	\$31.00	31.71%	\$30.00	29.27%	\$30.00	36.59%
		PT	\$27.00	31.03%	\$26.50	29.03%	\$25.00	30.30%	\$25.00	30.30%	\$25.00	31.25%

Notes: CCC = Child Care Center; GCCH = Group Child Care Home; FCCH = Family Child Care Home; FT = Full-time tuition rate; PT = Part-time tuition rate; MCCA = Current Maximum Child Care Allowance tuition rate; Perc. = Percentile of current MCCA rate.

Appendix B (continued). Current Maximum Child Care Allowance (MCCA) Percentiles

ELRC Region	Type		Infant		Younger toddler		Older toddler		Preschool		School-age	
			MCCA	Perc.	MCCA	Perc.	MCCA	Perc.	MCCA	Perc.	MCCA	Perc.
Region 6	CCC	FT	\$32.44	41.46%	\$32.44	45.78%	\$30.39	36.05%	\$30.39	50.00%	\$26.29	53.19%
		PT	\$28.00	56.10%	\$26.00	54.76%	\$26.00	60.00%	\$24.00	52.94%	\$21.47	55.88%
	GCCH	FT	\$27.00	31.25%	\$25.00	29.41%	\$25.00	36.84%	\$25.00	36.36%	\$24.00	33.33%
		PT	\$24.00	54.55%	\$22.70	27.27%	\$21.53	27.27%	\$20.00	31.25%	\$20.00	47.37%
	FCCH	FT	\$25.75	40.74%	\$25.00	46.43%	\$25.00	48.28%	\$25.00	50.00%	\$25.00	64.29%
		PT	\$21.00	40.91%	\$20.00	36.36%	\$20.00	39.13%	\$20.00	41.67%	\$17.00	40.00%
Region 7	CCC	FT	\$35.00	48.39%	\$32.00	46.88%	\$30.80	40.62%	\$29.37	30.77%	\$26.29	52.63%
		PT	\$32.00	66.67%	\$29.00	60.00%	\$28.18	55.00%	\$25.00	57.14%	\$26.29	87.18%
	GCCH	FT	\$27.00	100.00%	\$26.00	80.00%	\$26.00	75.00%	\$26.00	80.00%	\$25.00	75.00%
		PT	\$22.35	100.00%	\$20.00	66.67%	\$20.00	66.67%	\$19.27	33.33%	\$20.65	66.67%
	FCCH	FT	\$25.00	36.36%	\$25.00	36.36%	\$26.00	33.33%	\$26.00	36.36%	\$25.00	42.86%
		PT	\$25.00	66.67%	\$22.00	66.67%	\$22.00	66.67%	\$22.00	80.00%	\$20.00	80.00%
Region 8	CCC	FT	\$49.75	67.92%	\$46.66	67.86%	\$45.00	64.91%	\$42.91	68.33%	\$40.00	76.36%
		PT	\$46.65	65.62%	\$42.77	68.57%	\$39.72	68.57%	\$30.95	41.46%	\$33.83	75.68%
	GCCH	FT	\$33.06	72.22%	\$30.39	83.33%	\$29.98	68.42%	\$28.96	63.16%	\$25.00	47.06%
		PT	\$26.00	54.55%	\$24.00	58.33%	\$23.00	58.33%	\$22.00	61.54%	\$20.00	71.43%
	FCCH	FT	\$26.00	31.58%	\$25.00	31.58%	\$25.00	31.58%	\$25.00	31.58%	\$25.00	38.46%
		PT	\$25.00	85.71%	\$25.00	85.71%	\$24.00	57.14%	\$24.00	57.14%	\$22.00	50.00%
Region 9	CCC	FT	\$47.60	27.91%	\$45.60	36.23%	\$42.20	31.21%	\$39.60	29.53%	\$36.75	59.26%
		PT	\$40.00	26.23%	\$37.20	29.73%	\$36.20	34.18%	\$35.20	38.37%	\$24.00	44.19%
	GCCH	FT	\$40.00	45.00%	\$36.54	36.36%	\$36.00	43.48%	\$33.00	45.45%	\$31.00	40.00%
		PT	\$35.00	36.36%	\$30.00	25.00%	\$30.00	46.15%	\$28.00	38.46%	\$26.00	33.33%
	FCCH	FT	\$34.00	36.00%	\$32.00	40.35%	\$30.00	44.07%	\$30.00	47.46%	\$28.00	47.92%
		PT	\$30.00	44.83%	\$28.00	38.71%	\$26.00	34.38%	\$25.00	41.94%	\$20.00	37.50%
Region 10	CCC	FT	\$46.40	29.51%	\$45.00	40.15%	\$42.00	35.92%	\$38.00	32.91%	\$33.40	51.22%
		PT	\$42.00	37.93%	\$39.00	46.48%	\$36.40	44.16%	\$32.00	40.22%	\$24.00	61.31%
	GCCH	FT	\$35.00	22.22%	\$32.00	22.22%	\$30.00	16.67%	\$30.00	20.00%	\$30.00	44.44%
		PT	\$30.00	28.57%	\$26.60	28.57%	\$25.00	28.57%	\$25.00	31.25%	\$23.00	28.57%
	FCCH	FT	\$30.00	31.82%	\$29.00	21.92%	\$27.00	19.44%	\$26.00	20.83%	\$25.00	28.57%
		PT	\$25.00	33.33%	\$25.00	36.59%	\$24.00	28.57%	\$22.00	29.27%	\$20.00	38.46%

Notes: CCC = Child Care Center; GCCH = Group Child Care Home; FCCH = Family Child Care Home; FT = Full-time tuition rate; PT = Part-time tuition rate; MCCA = Current Maximum Child Care Allowance tuition rate; Perc. = Percentile of current MCCA rate.

Appendix B (continued). Current Maximum Child Care Allowance (MCCA) Percentiles

ELRC Region	Type		Infant		Younger toddler		Older toddler		Preschool		School-age	
			MCCA	Perc.	MCCA	Perc.	MCCA	Perc.	MCCA	Perc.	MCCA	Perc.
Region 11	CCC	FT	\$36.40	22.92%	\$34.00	15.53%	\$34.00	21.50%	\$32.00	25.00%	\$31.00	39.58%
		PT	\$32.00	32.69%	\$30.00	31.34%	\$30.00	37.14%	\$27.00	29.41%	\$21.32	26.39%
	GCCH	FT	\$30.39	29.41%	\$28.34	31.58%	\$27.32	20.00%	\$26.00	21.05%	\$25.00	33.33%
		PT	\$25.00	33.33%	\$24.55	35.71%	\$24.55	31.25%	\$24.55	35.71%	\$20.19	38.46%
	FCCH	FT	\$30.00	27.78%	\$30.00	31.58%	\$29.98	5.26%	\$29.98	5.56%	\$29.98	6.67%
		PT	\$29.98	50.00%	\$29.98	45.45%	\$29.98	45.45%	\$29.98	50.00%	\$29.98	44.44%
Region 12	CCC	FT	\$42.49	46.67%	\$37.40	32.17%	\$36.00	36.97%	\$34.00	37.78%	\$32.00	55.36%
		PT	\$35.67	39.71%	\$33.27	41.56%	\$30.00	37.50%	\$28.00	47.83%	\$25.42	51.14%
	GCCH	FT	\$35.00	27.27%	\$34.00	25.00%	\$31.00	16.67%	\$30.00	16.67%	\$30.00	33.33%
		PT	\$30.00	0.00%	\$25.42	0.00%	\$24.50	0.00%	\$24.00	0.00%	\$23.00	0.00%
	FCCH	FT	\$31.83	50.00%	\$31.42	50.00%	\$31.42	61.54%	\$27.50	46.15%	\$25.88	50.00%
		PT	\$26.45	66.67%	\$26.45	66.67%	\$26.45	70.00%	\$21.32	50.00%	\$20.00	70.00%
Region 13	CCC	FT	\$42.00	35.44%	\$39.80	37.50%	\$38.20	36.67%	\$35.00	39.22%	\$32.00	48.91%
		PT	\$38.00	41.51%	\$35.00	40.98%	\$32.99	34.92%	\$29.00	38.16%	\$23.80	40.70%
	GCCH	FT	\$32.44	16.67%	\$31.42	16.67%	\$30.39	14.29%	\$26.50	12.50%	\$25.00	42.86%
		PT	\$30.03	20.00%	\$26.45	0.00%	\$26.96	0.00%	\$22.00	42.86%	\$20.00	40.00%
	FCCH	FT	\$30.00	33.33%	\$30.00	41.67%	\$30.00	42.86%	\$30.00	50.00%	\$30.00	54.55%
		PT	\$24.00	22.22%	\$24.00	12.50%	\$24.00	22.22%	\$24.00	20.00%	\$20.00	40.00%
Region 14	CCC	FT	\$40.00	29.20%	\$38.60	27.81%	\$37.00	27.56%	\$35.00	34.78%	\$33.20	51.88%
		PT	\$33.00	25.88%	\$32.60	38.24%	\$31.20	40.74%	\$29.80	41.23%	\$25.00	50.36%
	GCCH	FT	\$37.00	42.86%	\$35.00	37.50%	\$33.00	37.50%	\$32.00	37.50%	\$30.00	76.92%
		PT	\$30.00	60.00%	\$29.00	40.00%	\$28.00	40.00%	\$27.00	40.00%	\$25.00	80.00%
	FCCH	FT	\$34.00	24.19%	\$30.00	13.85%	\$30.00	23.44%	\$28.00	16.13%	\$26.00	22.03%
		PT	\$27.00	27.78%	\$25.00	19.64%	\$25.00	23.21%	\$25.00	24.07%	\$23.80	26.92%
Region 15	CCC	FT	\$50.00	37.50%	\$48.40	28.70%	\$45.40	26.23%	\$43.00	31.34%	\$40.00	53.12%
		PT	\$39.00	31.34%	\$37.00	33.33%	\$35.20	40.00%	\$33.00	39.77%	\$28.62	41.05%
	GCCH	FT	\$40.00	60.00%	\$37.00	40.00%	\$36.00	28.57%	\$35.00	37.50%	\$32.00	50.00%
		PT	\$33.00	71.43%	\$33.00	71.43%	\$31.00	53.85%	\$30.00	60.00%	\$27.40	50.00%
	FCCH	FT	\$40.00	23.08%	\$37.00	25.00%	\$34.00	15.38%	\$33.00	23.08%	\$30.00	55.56%
		PT	\$31.00	18.18%	\$30.00	45.45%	\$28.00	27.27%	\$26.00	40.00%	\$25.00	77.78%

Notes: CCC = Child Care Center; GCCH = Group Child Care Home; FCCH = Family Child Care Home; FT = Full-time tuition rate; PT = Part-time tuition rate; MCCA = Current Maximum Child Care Allowance tuition rate; Perc. = Percentile of current MCCA rate.

Appendix B (continued). Current Maximum Child Care Allowance (MCCA) Percentiles

ELRC Region	Type	Infant		Younger toddler		Older toddler		Preschool		School-age		
		MCCA	Perc.	MCCA	Perc.	MCCA	Perc.	MCCA	Perc.	MCCA	Perc.	
Region 16	CCC	FT	\$55.00	29.29%	\$52.40	25.64%	\$50.80	26.98%	\$47.80	24.06%	\$50.00	61.98%
		PT	\$48.00	43.14%	\$43.00	36.36%	\$40.20	41.30%	\$36.00	42.42%	\$30.80	60.68%
	GCCH	FT	\$39.00	0.00%	\$39.00	16.67%	\$36.40	0.00%	\$33.80	0.00%	\$35.00	100.00%
		PT	\$32.00	0.00%	\$32.00	0.00%	\$32.00	0.00%	\$32.00	100.00%	\$32.00	100.00%
	FCCH	FT	\$36.00	33.33%	\$36.00	33.33%	\$36.00	44.44%	\$36.00	44.44%	\$30.00	42.86%
PT		\$30.00	50.00%	\$30.00	50.00%	\$30.00	33.33%	\$30.00	33.33%	\$30.00	50.00%	
Region 17	CCC	FT	\$61.00	26.40%	\$57.40	28.28%	\$55.43	29.76%	\$51.44	31.19%	\$50.00	49.32%
		PT	\$50.20	40.21%	\$46.20	40.62%	\$43.00	44.14%	\$39.00	53.09%	\$27.25	36.31%
	GCCH	FT	\$46.00	50.00%	\$44.00	42.86%	\$44.00	42.86%	\$40.00	14.29%	\$40.50	25.00%
		PT	\$30.00	0.00%	\$30.00	0.00%	\$30.00	0.00%	\$25.00	0.00%	\$25.75	33.33%
	FCCH	FT	\$40.00	35.71%	\$40.00	37.50%	\$40.00	41.18%	\$38.00	29.41%	\$35.00	57.14%
PT		\$40.00	85.71%	\$40.00	75.00%	\$39.00	62.50%	\$38.00	71.43%	\$27.00	66.67%	
Region 18	CCC	FT	\$49.40	19.41%	\$46.00	23.46%	\$42.00	23.21%	\$39.80	21.46%	\$35.00	38.79%
		PT	\$41.00	35.56%	\$39.00	35.24%	\$36.00	35.07%	\$32.00	29.60%	\$29.00	37.19%
	GCCH	FT	\$42.69	25.26%	\$40.00	29.47%	\$37.00	26.32%	\$34.00	21.28%	\$30.60	36.78%
		PT	\$36.00	29.41%	\$33.00	29.41%	\$31.00	33.72%	\$28.00	29.41%	\$25.30	33.33%
	FCCH	FT	\$40.00	25.82%	\$38.00	24.59%	\$36.00	26.49%	\$34.00	24.44%	\$31.00	31.95%
PT		\$34.00	24.84%	\$32.00	26.83%	\$30.00	26.22%	\$29.00	23.31%	\$26.29	26.49%	
Region 19	CCC	FT	\$63.00	30.12%	\$60.14	31.03%	\$58.00	35.56%	\$51.50	28.12%	\$47.00	66.32%
		PT	\$55.00	44.19%	\$50.00	42.59%	\$47.00	44.26%	\$40.15	32.35%	\$27.95	66.27%
	GCCH	FT	\$40.00	20.00%	\$40.00	16.67%	\$40.00	20.00%	\$40.00	42.86%	\$40.00	83.33%
		PT	\$44.00	40.00%	\$44.00	50.00%	\$43.00	50.00%	\$40.00	60.00%	\$25.00	80.00%
	FCCH	FT	\$40.00	22.22%	\$40.00	36.36%	\$35.00	0.00%	\$40.00	36.36%	\$40.00	37.50%
PT		\$37.50	20.00%	\$34.00	16.67%	\$34.00	16.67%	\$30.00	16.67%	\$25.00	25.00%	

Notes: CCC = Child Care Center; GCCH = Group Child Care Home; FCCH = Family Child Care Home; FT = Full-time tuition rate; PT = Part-time tuition rate; MCCA = Current Maximum Child Care Allowance tuition rate; Perc. = Percentile of current MCCA rate.