



Pennsylvania
Department of Human Services



Pennsylvania
Department of Health



PENNSYLVANIA
RURAL HEALTH TRANSFORMATION



Pennsylvania
Department of Aging



Pennsylvania
Insurance Department



Pennsylvania
Department of Drug and
Alcohol Programs

Pennsylvania's Rural Health Transformation Plan

Content of presentation was reviewed and approved and branding is used as required by the U.S. Department of Health and Human Services and Centers for Medicare & Medicaid Services as required in terms outlined in the Rural Health Transformation Program Notice of Award.

This project is supported by the Centers for Medicare & Medicaid Services (CMS) of the U.S. Department of Health and Human Services (HHS) as part of a financial assistance award totaling \$193 million, pending final budget approval, with 100 percent funded by CMS/HHS. The contents are those of the author(s) and do not necessarily represent the official views of, nor an endorsement, by CMS/HHS, or the U.S. Government.

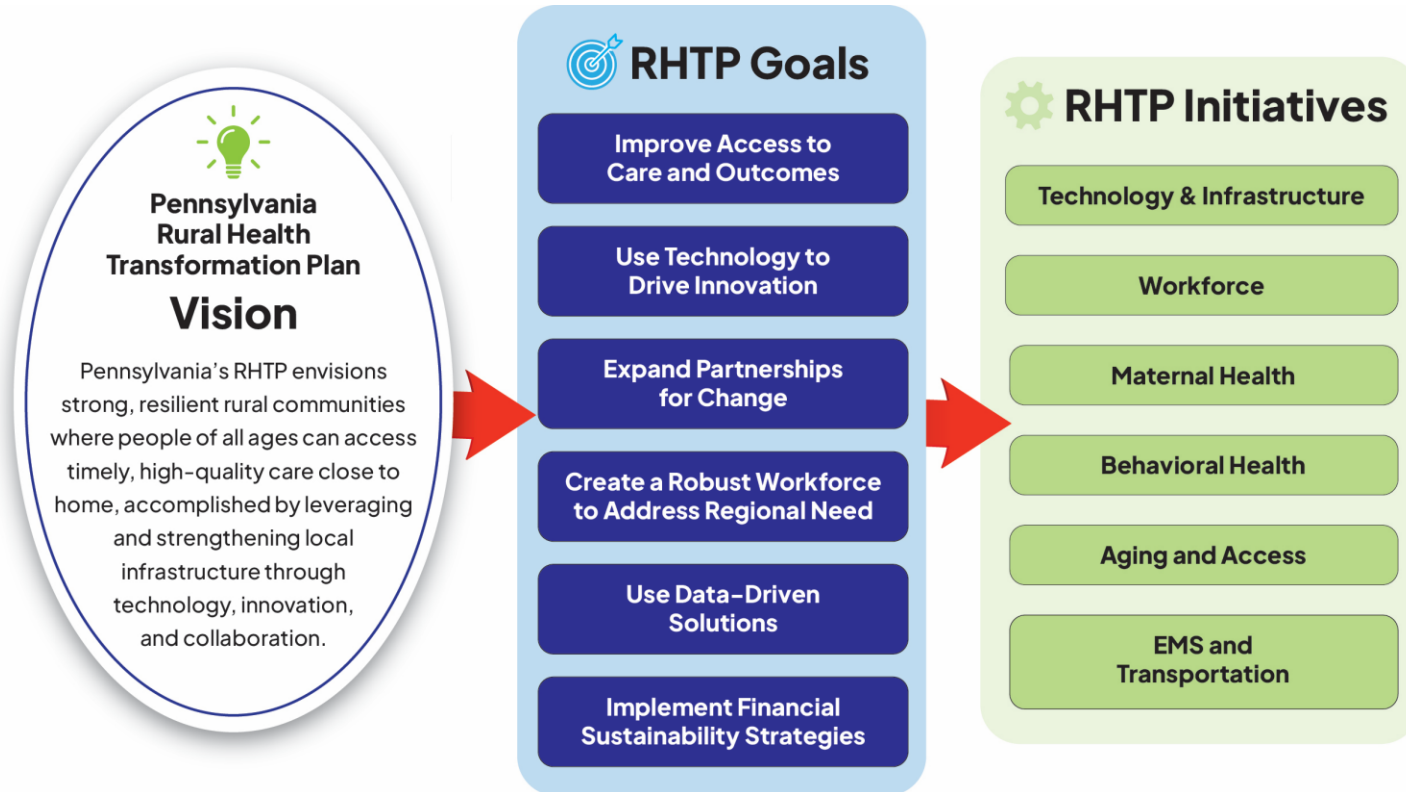


Pennsylvania
Department of Human Services

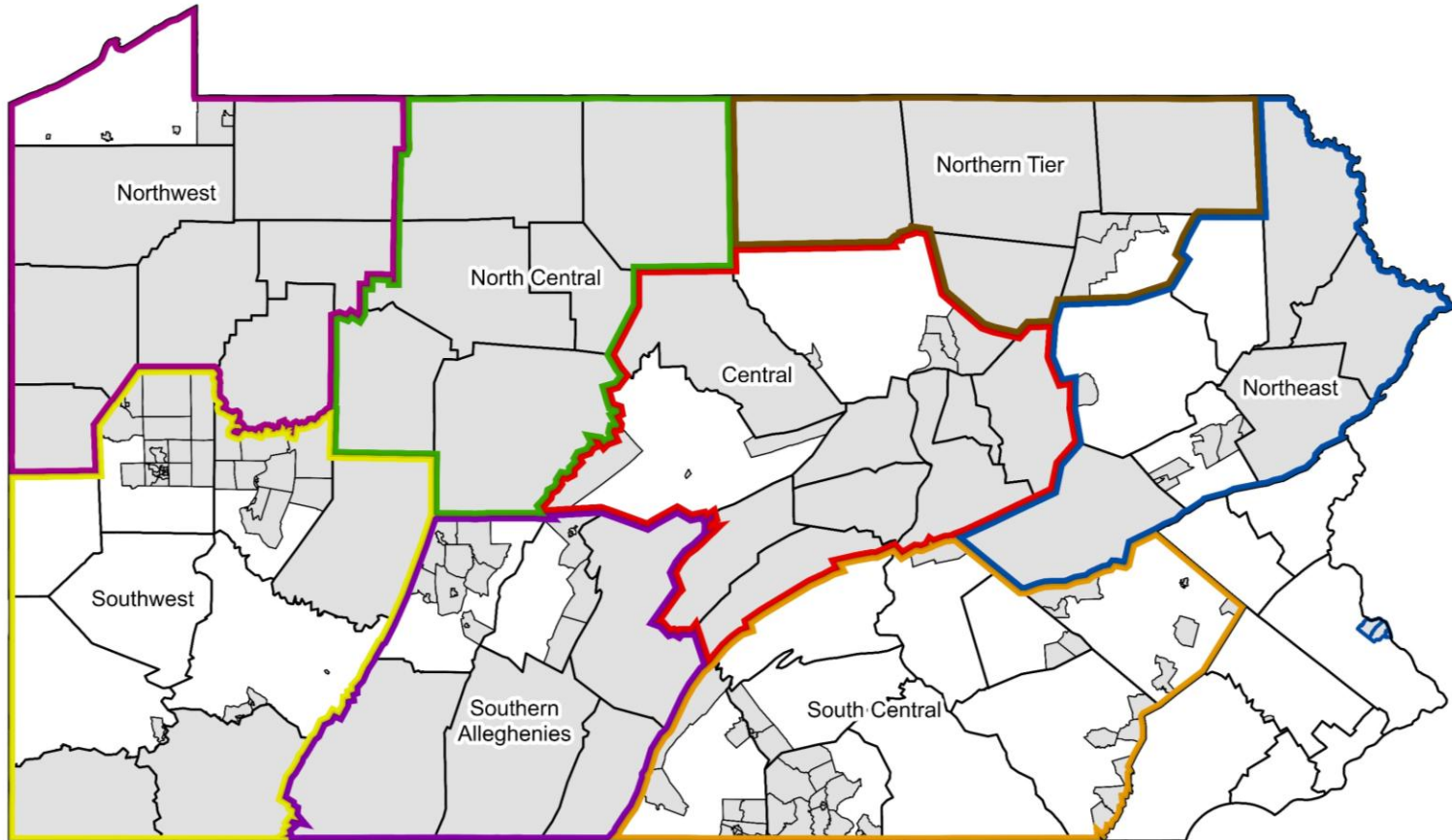
Deadlines

- **July 31, 2026 → end of first reporting period**
- **August 30, 2026 → first annual report due**
 - Rescoring for the Year 2 award will be based on this report
- **October 30, 2026 → Year 1 funds must be obligated**
- **October 31, 2026 → Year 2 funding awarded**
- **November 29, 2026 → quarterly report due**
 - Covers August 1st through October 30th
- **March 1, 2027 → quarterly report due**
 - Covers October 31st through January 30th, 2027
- **May 30, 2027 → quarterly report due**
 - Covers January 31st through April 30th
- **September 30, 2027 → Year 1 spending deadline**

Pennsylvania's RHTP: Supporting Strong, Resilient Rural Communities



Rural Care Collaboratives



Governance Structure



How to Get Involved

- Submit a nomination to the Advisory Council or RCC
- Participate in RCC convenings
 - RCC convenings are the place for engagement



Funding Mechanism Breakdown

The chart below lists the different ways we plan to distribute Year 1 funding

Funding Mechanism	Description	Example
Expansion of Existing Programs	Funding for existing agency programs and funding streams	988
Program Payment	Funding for specific tangible items or projects	Mobile health units
Intergovernmental Agreement	Agreement for a government-affiliated entity to perform work an agency would otherwise do	University of Pittsburgh Medicaid Research Center
Grant Agreements	Award method where the agency makes an agreement with an external entity	Educational awards

Year 1 State Projects

- 988 Outreach and Expansion
- Medical Assistance Transportation Program Car Seat Pilot
- MyOMHSAS Expansion
- Increase and Expand Integration for Dual Eligible Rural Pennsylvanians
 - LIFE expansion and behavioral health integration
- Perinatal TiPS Expansion
- Hospital-to-Home care by EMS agencies
- Long Term Care Quality Investment Program (QIP)
- Redesign of Pennsylvania's Aging & Disability Resource Center (ADRC)

Grant Agreements

- Service Linked Educational Awards
- Rapid Response Program
- Maternal monitoring
- Technology investments
 - P3N HIO Onboarding
- Indiana University of Pennsylvania College of Osteopathic Medicine (IUP COM) rural workforce initiative
- Regional Dental Training Centers and Clinics

Program Payments

- Rapid Response Program
- Technology investments
 - EHR for behavioral health providers
 - EHR for FQHCs
- Mobile Health Units
- Ambulance Enhancements

Intergovernmental Agreement

- University of Pittsburgh Medicaid Research Center



Important Considerations

- The projects in this presentation are examples. This presentation does not include all projects.
- Every project must tie back to the project narrative
 - Six initiatives: Aging and Access, Behavioral Health, EMS and Transportation, Maternal Health, Technology and Infrastructure, Workforce
- Qualified entities are defined in state law
 - Hospitals, health care providers, rural health facilities, government agencies, community partners, or other person that demonstrates its ability to administer a component of the Department's federally-approved application
- Year 1 is the first step in sustainable planning for rural Pennsylvania
- Use the best suited funding mechanism for your program and project
- Stay up to date by signing up for the listserv
 - dhs.pa.gov/ruralhealth

Questions?