

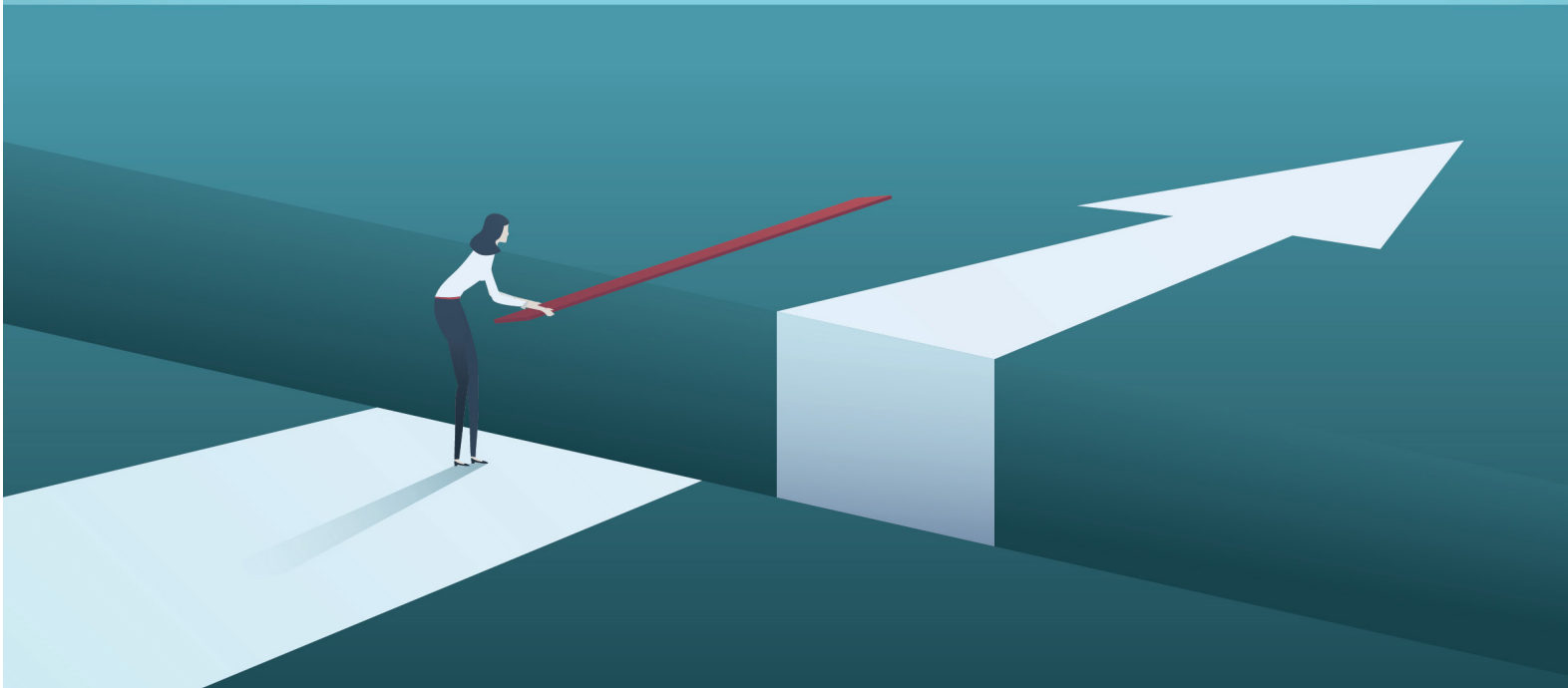


Pennsylvania
Department of Human Services



BRIDGES TO SUCCESS:
**INVESTMENTS IN HEALTH
IN PENNSYLVANIA**

**ENGAGEMENT
GUIDE**



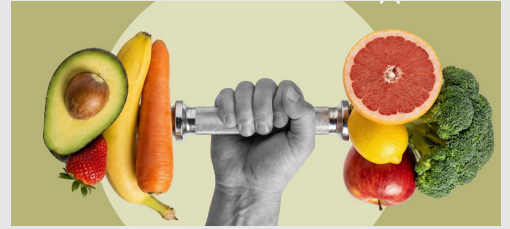


The success of Investments in Health is built upon the support of diverse providers, leaders, experts, and advocates within the reentry, housing, and food is medicine community. Help us continue this work by engaging with your network and learning how this program will support your work and help Pennsylvanians live healthy, enriching, and vibrant lives.



Pennsylvania
Department of Human Services

What is Investments in Health?



Food is Medicine

Medically tailored meals to Medicaid recipients with diet-sensitive health conditions to support better health and lower health care use.



Housing Stability

Connect Pennsylvanians experiencing homelessness to housing and supportive services to create a bridge to long-term stability and increase access to primary and behavioral health care.



Reentry Supports

Pre-release Medicaid coverage and intensive case management for incarcerated individuals returning to their communities from State Correctional Institutions to support stability and success during this critical period.

Now is the time to invest in Pennsylvanians!

Funding for Investments in Health was proposed by Governor Shapiro in the 2026-2027 Budget.

If fully funded, this program will allow the Department of Human Services to leverage additional federal resources through the Medicaid program to support these pilots and give us new tools to address health-related social needs that are extremely influential on a person's overall health and health care spending. Governor Josh Shapiro's 2026-2027 proposed budget includes \$2.8 million state funding for Investments in Health that would leverage \$4.7 million in federal dollars, totaling \$7.5 million. This includes:

- **Food is Medicine:** \$900,000 in state funds to leverage federal investment for a total of \$2.3 million to support a pilot program that will bring medically tailored meals to Medicaid recipients experiencing food insecurity with diet-sensitive health conditions.
- **Reentry Supports:** \$900,000 in state funds to leverage additional federal funding for a total of \$2.7 million that will support pre-release Medicaid coverage for incarcerated individuals with high-risk health conditions returning to their communities from State Correctional Institutions.
- **Housing Stability:** \$1 million in state funding to leverage additional federal funding for a total of \$2.5 million to launch a pilot program that will help Pennsylvanians with high-risk health conditions experiencing homelessness connect to stable housing and services.

North Carolina's Healthy Opportunities pilot, a similar program that invests in food, housing, and other social supports for Medicaid recipients with greater health needs, is seeing tangible success. In June 2026, North Carolina [released data](#) showing that embedding food and housing supports for a cohort of approximately 31,000 Medicaid recipients saved an average of \$164 per member per month — driving more than \$61 million in Medicaid savings annually.

\$7.5 million

TOTAL INVESTMENT

\$2.8m + **\$4.7m**
STATE FEDERAL



\$2.3 million

FOOD IS MEDICINE

**\$900,000 in state funding +
\$1.4 million in federal funding**



\$2.7 million

HOUSING STABILITY

**\$1 million in state funding +
\$1.8 million in federal funding**



\$2.5 million

REENTRY SUPPORTS

**\$900,000 in state funding +
\$1.5 million in federal funding**





Food is Medicine

BRIDGES TO SUCCESS: INVESTMENTS IN HEALTH IN PENNSYLVANIA

Addressing social needs such as food insecurity or difficulty accessing fresh, healthy foods not only helps meet this essential need but also has been shown to reduce hospital admissions by half for individuals with chronic conditions. Investments in Health proposes to provide food and nutrition services to specific Medicaid populations facing food insecurity, specifically beneficiaries with diet-sensitive conditions. A similar pilot in North Carolina's Medicaid program found participants decreased by an average of \$164 per person each month, compared to expected costs without a pilot. This savings is inclusive of the cost of service and administrative overhead. Program statistics show that 89% of participants surveyed at 6 months improved their health and had significantly fewer emergency department visits and hospital stays, and more visits with outpatient providers compared to what would have happened without the pilot program.



Targeted short-term interventions that create a bridge through a critical high-risk period. With the Food is Medicine program, we can:

- Improve health outcomes for high-risk conditions;
- Decrease avoidable health care use;
- Reduce cost of care;
- Build relationships between nutrition and health care providers; and,
- Reduce food insecurity among high-risk individuals.

Available Services

The available services will help bring medically tailored meals to Medicaid recipients with diet-sensitive health conditions for up to six months.

- Provide fully prepared meals approved by a dietitian tailored to a specific medical condition;
- Offer up to 14 meals per week for individuals; and
- Connect individuals with community partners who can provide cooking and healthy eating education to support the transition out of the Food is Medicine program while setting them up for long-term success.

Who are we helping?

This pilot will focus on highest risk populations with diet-sensitive conditions and food insecurity such as:

- Congestive heart failure;
- End stage renal disease;
- Diabetes (including gestational diabetes); and,
- Cancer with active chemotherapy.



Housing Stability

BRIDGES TO SUCCESS: INVESTMENTS IN HEALTH IN PENNSYLVANIA

Individuals experiencing homelessness are often faced with chronic health conditions, impacting both mental and physical well-being. Stable housing, a recognized cornerstone of good health, can serve as a bridge for homeless adults with chronic illnesses, leading to a nearly 30% reduction in hospital stays. Investments in Health proposes to add new Medicaid services to help beneficiaries without stable housing find and keep a place to live. Having stable housing makes it easier to find and use health care.



Available Services

Housing interventions and supportive services that connect people with primary care, mental health and substance use disorder treatment, and recovery supports can decrease avoidable emergency room use or hospitalizations. Ultimately, stable housing serves as a foundation for both individual well-being and more efficient, cost-effective health care delivery. Housing interventions include:

- Connecting people to existing housing supports and services;
- Helping during transitions with moving expenses, necessary household items;
- Providing short-term help paying rent up to six months; and,
- Providing education and support to keep housing.

Who are we helping?

These services will focus on beneficiaries with behavioral health needs and chronic conditions who experience avoidable emergency department visits and hospitalizations, where health outcomes are greatly impacted by improved consistency of care and medication access.

This pilot will focus on individuals experiencing homelessness and incarcerated individuals at risk of homelessness with the conditions below:

- Serious Mental Illness;
- Substance Use Disorder;
- Pregnancy; and,
- Serious chronic conditions (including cancer, Type 1 or 2 diabetes, end-stage renal disease).



Reentry Supports

BRIDGES TO SUCCESS: INVESTMENTS IN HEALTH IN PENNSYLVANIA

Leaving correctional facilities exposes individuals to a heightened risk of health challenges, including mental health and substance use disorders. Two-thirds of incarcerated individuals have a history of substance use disorder and are at 12 times the risk of death immediately following release. Investments in Health helps create a path for improved services to incarcerated individuals and continued support as they transition back into the community, reduce overdose deaths, and reduce recidivism. Just a five percent reduction in recidivism would save approximately \$2 million in taxpayer resources for the Commonwealth in just one year.



Available Services

The available services will focus on improving transitions to community-based health care and social services with a particular emphasis on those with significant health care needs such as serious mental illness and substance use disorder. Services for individuals pre- and post- release include:

- Provide Medicaid coverage to up to 90 days prior to release;
- Substance use disorder care, including medications for opioid use disorder;
- Intensive case management to support warm hand-offs for post-release clinical and social services to set people up for success; and,
- Facilitate transition to Medicaid managed care plan upon release, if eligible.

Who are we helping?

Incarcerated individuals with a high-risk condition or circumstance including:

- Serious mental illness or substance use disorder;
- Certain high-risk physical health conditions such as cancer, End Stage Renal Disease, severe lung disease or diabetes;
- Pregnant or post-partum; and,
- Other populations with unique reentry needs include inmates with Autism Spectrum Disorder and inmates who will be eligible for Medicaid 1915(c) home and community-based services.



Social Media Posts

BRIDGES TO SUCCESS: INVESTMENTS IN HEALTH IN PENNSYLVANIA

INVESTMENTS IN HEALTH

Building Bridges to Success to Support a Thriving Pennsylvania

Food is Medicine: Who We are Helping

Investments in Health proposes to provide food and nutrition services to specific Medicaid populations facing food insecurity, including pregnant beneficiaries and beneficiaries with diet-sensitive conditions.

INVESTMENTS IN HEALTH

Building Bridges to Success to Support a Thriving Pennsylvania

Food is Medicine: Why it Matters

Addressing social needs such as food insecurity not only enhances the diet of individuals but also has been shown to reduce hospital admissions by half for individuals with chronic conditions. Services would include direct food support such as medically-tailored meals with a goal of also connecting eligible beneficiaries to long-term food assistance, like SNAP.

Food is Medicine

↓ [DOWNLOAD: Food is Medicine — Who We Are Helping Graphic](#)

↓ [DOWNLOAD: Food is Medicine — Why It Matters Graphic](#)

INVESTMENTS IN HEALTH

Building Bridges to Success to Support a Thriving Pennsylvania

Housing Supports: Who We are Helping

Investments in Health proposes to add new Medicaid services to help beneficiaries without stable housing find and keep a place to live. These services will focus on beneficiaries with behavioral health issues and chronic conditions where health outcomes are greatly impacted by improved consistency of care and medication access.

INVESTMENTS IN HEALTH

Building Bridges to Success to Support a Thriving Pennsylvania

Housing Supports: Why it Matters

Individuals experiencing homelessness are often faced with chronic health conditions, impacting both mental and physical well-being. Stable housing, a recognized cornerstone of good health, can serve as a bridge for homeless adults with chronic illnesses, leading to a nearly 30% reduction in hospital stays.

Housing Supports

↓ [DOWNLOAD: Housing Supports — Who We Are Helping Graphic](#)

↓ [DOWNLOAD: Housing Supports — Why It Matters Graphic](#)

INVESTMENTS IN HEALTH

Building Bridges to Success to Support a Thriving Pennsylvania

Reentry Initiative: Who We are Helping

Investments in Health aims to improve transitions to the community for beneficiaries reentering society from correctional facilities. The available services will focus on improving transitions to community-based health care and social services with a particular emphasis on those with significant health care needs such as serious mental illness and substance use disorder.

INVESTMENTS IN HEALTH

Building Bridges to Success to Support a Thriving Pennsylvania

Reentry Initiative: Why it Matters

Leaving correctional facilities exposes individuals to a heightened risk of health challenges, including mental health and substance use disorders. Two thirds of incarcerated individuals have a history of substance use disorder and are at 12 times the risk of death immediately following release.

Reentry Initiative

↓ [DOWNLOAD: Reentry Initiative — Who We Are Helping Graphic](#)

↓ [DOWNLOAD: Reentry Initiative — Why It Matters Graphic](#)