

Pennsylvania eHealth Partnership Advisory Board Meeting

November 1, 2024



**PA PATIENT &
PROVIDER NETWORK**
PRIVATE & PROTECTED



Pennsylvania
Department of Human Services

This Session is being Recorded

The Wiretap Act

It is against the law in Pennsylvania to record oral conversations without the permission of the individuals involved, in most circumstances.

Consent to Recording

This session is being recorded for record-keeping purposes. By participating in this session, you are consenting to the recording of this session for preparation of meeting minutes. At any time if you have a question or comment, feel free to place that in the chat, and we will respond to you as soon as possible. If you would like to ask your question or to comment verbally – please note that by doing so, you are consenting to the recording of your statements for preparation of meeting minutes.

Please Note: The Commonwealth does not approve having Artificial Intelligence (AI) bots interacting with Commonwealth meetings.

Agenda

- 10 a.m. Welcome and Introductions
- 10:05 Minutes of August 2, 2024, Advisory Board Meeting
- 10:10 Health Information Exchange Trust Community Committee Updates
- 10:30 PA eHealth Partnership Program Initiatives
- 11:00 PA Department of Health (DOH) Data Modernization Initiatives and Priorities
- 11:30 Central Pennsylvania Connect HIE Overview
- 12 p.m. Networking Luncheon
- 12:30 PA eHealth Partnership Program SFY 2023-2024 Annual Report Review
- 1:10 PA NAVIGATE Project Implementation
- 1:25 New TEFCA Developments
- 1:40 Vice Chairperson Election
- 1:45 New Business
- 1:50 Public Comment
- 2 p.m. Adjournment



Welcome and Introductions

Paul McGuire

Post-Acute Care Representative

and

PA eHealth Advisory Board Chair



PA eHealth Advisory Board

Ms. CAROLINE BEOHM, Policy Director, Pennsylvania Insurance Department
(Insurance Commissioner Designee)

Mr. MARTIN CICCOCIOPPO, Director, PA eHealth Partnership Program
Pennsylvania Department of Human Services (Secretary of DHS Designee)

Ms. PAMELA E. CLARKE, Senior Director, Quality, Health Promotion Council
(House Appointed HIO Representative)

Dr. ROBERT DANOFF, Director of Family Medicine Residency Program
Jefferson Health Northeast (Physician or Nurse Representative)

Mr. JOSEPH FISNE, Associate Chief Information Officer
Geisinger Health System (Senate Appointed HIO Representative)

Mr. SCOTT FRANK, Chief Information Officer
Capital Blue Cross (Insurer Representative)

Ms. TERI L. HENNING, AVP Government Affairs
Aveanna Healthcare (Home Care or Hospice Representative)



PA eHealth Advisory Board continued

Ms. MUNEEZA IQBAL, Deputy Secretary for Health Resources and Services
Pennsylvania Department of Health (Secretary of Health Designee)

Ms. JULIE KORICK (Vice Chair), Director of Finance & Business Development
Pennsylvania Association of Community Health Centers (Underserved Representative)

Ms. MINTA LIVENGOOD, Vice Chair, Consumer Subcommittee of the MAAC
(Consumer Representative)

Mr. PAUL MCGUIRE (Chair), Chief Operating Officer, Carbondale Nursing Home
(Post-Acute Care Facility Representative)

Dr. MICHAEL A. SHEINBERG, Chief Medical Information Officer
Penn Medicine Lancaster General Health (House Appointed HIO Representative)

Mr. MARK VOLOVIC, VP & Chief Information Officer, Indiana Regional Medical Center and
Punxsutawney Area Hospital (Hospital Representative)

Dr. MARGARETE ZALON, Professor Emeritus, Department of Nursing
The University of Scranton (Consumer Representative)

Ex Officio Members

Ms. PHYLLIS SZYMANSKI, President
ClinicalConnect HIE (Nominated as Senate HIO Appointee)

Mr. DON REED, Chief Operating Officer
HealthShare Exchange (Nominated as House HIO Appointee)



HIE Trust Community Committee Updates

Philip Coady

Corrections Health Care Administrator

PA Department of Corrections

and

Erica Gipe

EHR Project Manager

PA Department of Corrections

HIE Trust Community Committee

Chairperson:

- Richard Kerr, R.Ph., Admin., Clinical/Revenue Cycle Software Applications Management LVHN Technology

HIE Trust Community Committee Meeting Summaries:

- HIETCC Meeting Agenda, October 2, 2024
- HIETCC Meeting Minutes, September 4, 2024
- HIETCC Meeting Minutes, August 7, 2024
- HIETCC Meeting Minutes, July 10, 2024

Recent HIE Trust Community Committee Topics

- P3N Performance Workgroup
- Consent Workgroup
- Strategic Plan Metrics
- Annual Certification Package Review
- PA NAVIGATE Implementation and Integration Efforts
- Admission Discharge Transfer (ADT) Message Sharing
- Trusted Exchange Framework and Common Agreement (TEFCA)
- P3N Operations and Transparency
- Master Patient Index Maintenance
- Cybersecurity Exercise

PA eHealth Partnership Program Initiatives

Martin Ciccocioppo

Director

Pennsylvania eHealth Partnership Program

Office of Medical Assistance Programs

Pennsylvania Department of Human Services



Pennsylvania Patient and Provider Network (P3N)

Statewide Connections with five Certified Participating HIOs

- ClinicalConnect Health Information Exchange (Connected: November 2016)
- Central Pennsylvania Connect HIE administered by Penn Medicine Lancaster General Health (Connected: May 2019)
- HealthShare Exchange of Southeastern Pennsylvania (Connected: April 2016)
- Keystone Health Information Exchange (Connected: May 2016)
- Lehigh Valley Health Network (Connected: May 2022)

State Agency EHR Connections

- PA Department of Corrections (Connected: September 2019)
- OMHSAS State Hospitals' NetSmart EHR (Connected: August 2024)

Interstate Connections

- Delaware Health Information Network (ADTs only: January 2022)
- CRISP Shared Services for Maryland, West Virginia, District of Columbia, Connecticut, and Alaska HIEs (ADTs only: August 2023)
- Ohio Health Information Partnership (ADTs only, Anticipated CY2025)

Acute Care Hospitals Not Affiliated with a P3N HIO

BARNES-KASSON COUNTY HOSPITAL
BRADFORD REGIONAL MEDICAL CENTER
BUCKTAIL MEDICAL CENTER, THE
CHAN SOON-SHIONG MEDICAL CENTER AT WINDBER
GEISINGER ST. LUKE'S HOSPITAL
LECOM HEALTH CORRY MEMORIAL HOSPITAL
LOWER BUCKS HOSPITAL
PENN HIGHLANDS BROOKVILLE
PENN HIGHLANDS CLEARFIELD
PENN HIGHLANDS CONNELLSVILLE
PENN HIGHLANDS DUBOIS
PENN HIGHLANDS ELK
PENN HIGHLANDS HUNTINGDON
PENN HIGHLANDS MON VALLEY
PENN HIGHLANDS TYRONE

REGIONAL HOSPITAL OF SCRANTON
ROXBOROUGH MEMORIAL HOSPITAL
SHARON REGIONAL HEALTH SYSTEM
ST. LUKE'S HOSPITAL - ALLENTOWN CAMPUS
ST. LUKE'S HOSPITAL - ANDERSON CAMPUS
ST. LUKE'S HOSPITAL - BETHLEHEM CAMPUS
ST. LUKE'S HOSPITAL - CARBON CAMPUS
ST. LUKE'S HOSPITAL - EASTON CAMPUS
ST. LUKE'S HOSPITAL - MINERS CAMPUS
ST. LUKE'S HOSPITAL - MONROE CAMPUS
ST. LUKE'S HOSPITAL - SACRED HEART CAMPUS
ST. LUKE'S HOSPITAL - UPPER BUCKS CAMPUS
SUBURBAN COMMUNITY HOSPITAL
WARREN GENERAL HOSPITAL
WILKES-BARRE GENERAL HOSPITAL



GOAL 1: Enable ubiquitous, robust health data sharing

| WBS <small>(Goal-OBJ-Metric)</small> | Data Driven Metrics | Baseline | Goal | | Current | Achieved |
|---|--|-----------------|-----------|--------|---------|----------|
| | | Value | Inc / Dec | Target | | |
| 1.A.1 | Increase number of long-term care facilities participating in HIE by 2% per year | 173 | 2.00% | 176 | 173 | No |
| 1.A.2 | Increase number of hospitals connected to certified HIOs by 2% per year | | | | | |
| 1.A.2 (a) | Increase number of All hospitals connected to certified HIOs by 2% per year | 161 | 2.00% | 164 | 165 | Yes |
| 1.A.2 (b) | Increase number of Acute Care hospitals connected to certified HIOs by 2% per year | 142 | 2.00% | 145 | 146 | Yes |
| 1.B.1 | Increase patient portal usage by 5% per year | | | | | |
| 1.B.1 (a) | Increase Total Logins by 5% per year | 17 | 5.00% | 18 | 27 | Yes |
| 1.B.1 (b) | Increase Unique Logins by 5% per year | 4 | 5.00% | 4 | 7 | Yes |
| 1.B.1 (c) | Increase Clinical Reads by 5% per year | 0 | 5.00% | 0 | 17 | Yes |
| 1.B.2 | Increase number of Pa eHealth website hits by 5% per year | 652 | 5.00% | 685 | 4,550 | Yes |
| Date Driven Metrics | | Achieved | | | | |
| Meet in SFY 2025 | | | | | | |
| 1.C.1 | Secure contract with new P3N vendor that meets federal requirements by 1Q2026 | No | | | | |



GOAL 2: Increase timely access to usable information

| WBS <small>(Goal-OBJ-Metric)</small> | Data Driven Metrics | Baseline | Goal | | Current | Achieved |
|---|---|-----------------|-----------|--------|---------|----------|
| | | Value | Inc / Dec | Target | | |
| 2.C.1 | Increase number of organizations integrated with Pa Navigate by 5% per year | | 5.00% | | 0 | No |
| Date Driven Metrics | | Achieved | | | | |
| 2.A.2 | Investigate possibility of paying for MA in lieu of services through PA Navigate in SFY 2024/2025 | No | | | | |
| 2.B.1 | Expose closed-loop referrals to Compass in CY2025 | No | | | | |
| 2.B.2 | Expose Compass program participation | No | | | | |
| 2.A.1 | Complete MMIS integration by 2Q2027, including exposing MA claims information to the P3N | No | | | | |



GOAL 3: Improve upon existing P3N services

| WBS <small>(Goal-OBJ-Metric)</small> | Data Driven Metrics | Baseline | Goal | | Current | Achieved |
|---|--|-----------------|-----------|---------|---------|----------|
| | | Value | Inc / Dec | Target | | |
| 3.B.1 | | | | | 0 | No |
| 3.B.1 (a) | Increase operational efficiency by reducing XCA errors by 3% per year | 69,672 | -3.00% | 67,582 | 76,585 | No |
| | Error Read | 128 | | 124 | 803 | No |
| | SOAP | 40,412 | | 39,200 | 79,484 | No |
| | Socket | 2,455 | | 2,381 | 9,465 | No |
| | Timed Out | 26,677 | | 25,877 | 54,460 | No |
| | Parser Error | 0 | | 0 | 77 | No |
| 3.B.1 (b) | Increase operational efficiency by reducing ADT errors by x% per year | 604,646 | -3.00% | 586,507 | 647,136 | No |
| Date Driven Metrics | | Achieved | | | | |
| Meet in SFY 2025 | | | | | | |
| 3.A.1 | Hosting ONAF forms in P3N clinical data repository by end of CY2024 | No | | | | |
| 3.A.2 | Hosting Department of Aging SAMS care plans by | No | | | | |
| 3.A.3 | Automated identity proofing and enrollment of patients in the P3N patient portal in CY2025 | No | | | | |



GOAL 4: Expand care coordination

| WBS <small>(Goal-OBJ-Metric)</small> | Data Driven Metrics | Baseline | Goal | | Current | Achieved |
|---|---|-----------------|-----------|------------|------------|----------|
| | | Value | Inc / Dec | Target | | |
| 4.A.1 | Increase inter-state ADT sharing by 1 state per year | 6 | 1 | 7 | 8 | Yes |
| 4.A.2 | Increase volume of ADTs sent from the P3N by 5% per year | 62,270,222 | 5.00% | 65,383,733 | 20,869,829 | No |
| 4.C.1 | Increase the number of reports accessed by P3N participants by 10% annually | 13,684,111 | 10.00% | 15,052,522 | 2,856,512 | No |
| Date Driven Metrics | | Achieved | | | | |
| 4.B.1 (a) | Create ADT surveillance system for support of abuse and neglect in CY2024 | No | | | | |
| 4.B.1 (b) | Create ADT surveillance system for support of poison control in CY2025 | No | | | | |



Goal 5: Increase closed loop referrals for HRSNs

| WBS <small>(Goal-OBJ-Metric)</small> | Data Driven Metrics | Baseline | Goal | | Current | Achieved |
|---|--|-----------------|-----------|--------|---------|----------|
| | | Value | Inc / Dec | Target | | |
| 5.A.1 | 10% increase in number of closed-loop referrals in PA annually | 100 | 10.00% | 110 | 0 | No |
| Date Driven Metrics | | Achieved | | | | |
| Meet in SFY 2025 | | | | | | |
| 5.B.1 | Leverage the P3N MPI with Pa Navigate by CY2025 | No | | | | |
| 5.B.2 | Leverage the P3N for closed-loop referral | No | | | | |



GOAL 6: Expand our collaboration with commonwealth agencies

| WBS <small>(Goal-OBJ-Metric)</small> | Data Driven Metrics | Baseline | Goal | | Current | Achieved |
|---|--|-----------------|-----------|-----------|---------|----------|
| | | Value | Inc / Dec | Target | | |
| 6.A.1 | Increase the volume of messages traversing the public health gateway by 5% per year | 5,108,700 | 5.00% | 5,364,135 | | No |
| 6.A.2 | Increase the number of registries participating in the public health gateway by one per year | 4 | 1 | 5 | | No |
| 6.C.1 | Increase number of county prisons connected to certified HIOs by 2 per year | 0 | 2 | 2 | | No |
| 6.B.1 | Increase the number of state programs accessing the P3N by 1 per year | 2 | 1 | 3 | | No |
| 6.B.2 | Increase number of PA county and local programs using PA Navigate by 5% per year | 0 | 5.00% | 0 | | No |
| Date Driven Metrics | | Achieved | | | | |
| 6.b.3 (a) | Integrate P3N with state EHRs (OMHSAS) by CY2024. | Yes | | | | |
| 6.B.2 | Integrate P3N with the Enterprise Case | No | | | | |
| 6.B.3 (b) | Integrate P3N with state EHRs (DMVA) by CY2025) | No | | | | |



GOAL 7: Advocate for sustainable HIO funding

| WBS <small>(Goal-OBJ-Metric)</small> | Data Driven Metrics | Baseline | Goal | | Current | Achieved |
|---|---|-----------------|-----------|--------|-------------|----------|
| | | Value | Inc / Dec | Target | | |
| 7.A.2 | Continue and increase MA Care Coordination Grants each year | 0 | \$1 | \$1 | \$2,000,000 | YES |
| Date Driven Metrics | | Achieved | | | | |
| 7.B.1 | Enhance the P3N ADT service to meet HIO needs for alerts and notifications by CY 2024 | No | | | | |
| 7.A.1 | Implement MA Care Coordination Grants in FFY2025 | Yes | | | | |



Cognosante P3N Services

Core P3N Services

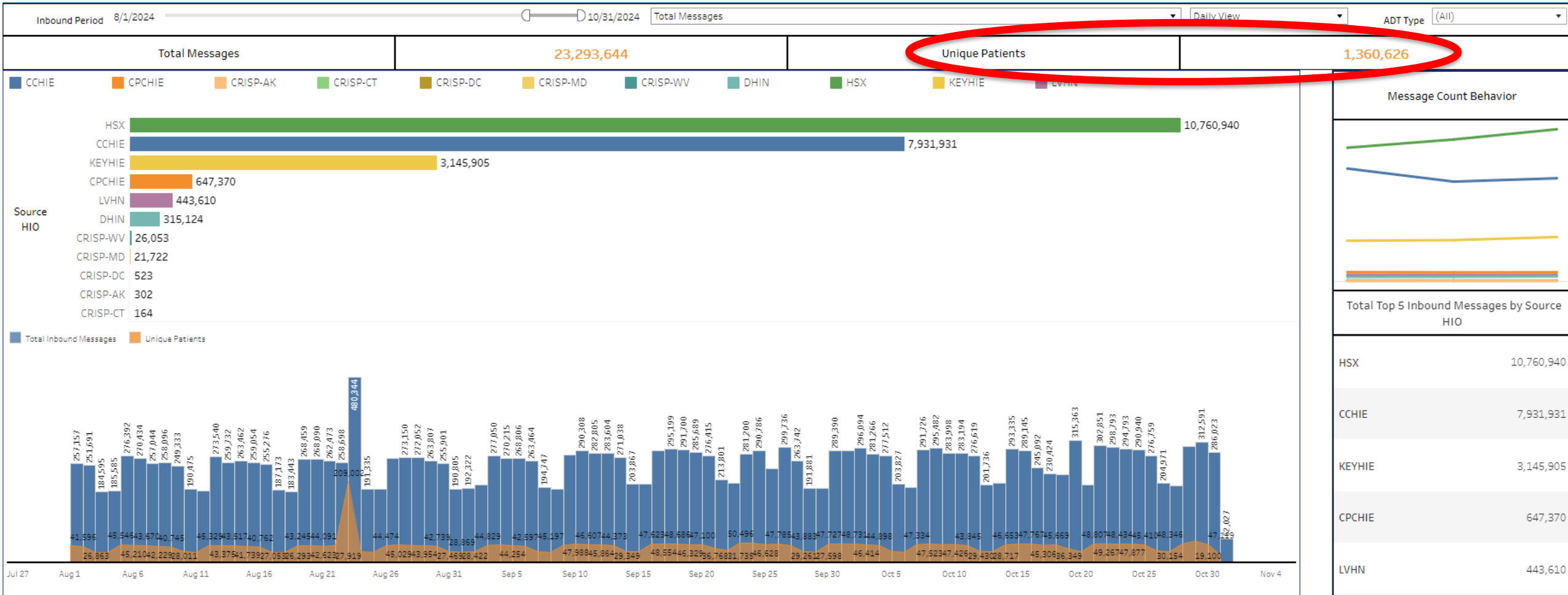
- **P3N Master Patient Identifier (Verato)**
- **Statewide Query and Retrieve**
- **Statewide and Interstate Alerting**

P3N Enhancements

- **Care Plan Registry**
 - Integrated Care Plan
 - OB Needs Assessment Form (ONAF)
 - Pediatric Shift Nursing Care Plans
 - Area Agency on Aging SAMS Care Plans
- **Public Health Gateway**
 - PA Immunization Electronic Registry System (PIERS)
 - Electronic Lab Registry (eLR)
 - Prescription Drug Monitoring Program (PDMP)
 - Cancer Registry
- **Individual Access Services (Patient Portal)**
- **Provider Directory (<https://portal.p3nphg.org/public/providers>)**



P3N Inbound ADTs and Unique Patients (Aug-Oct 2024)

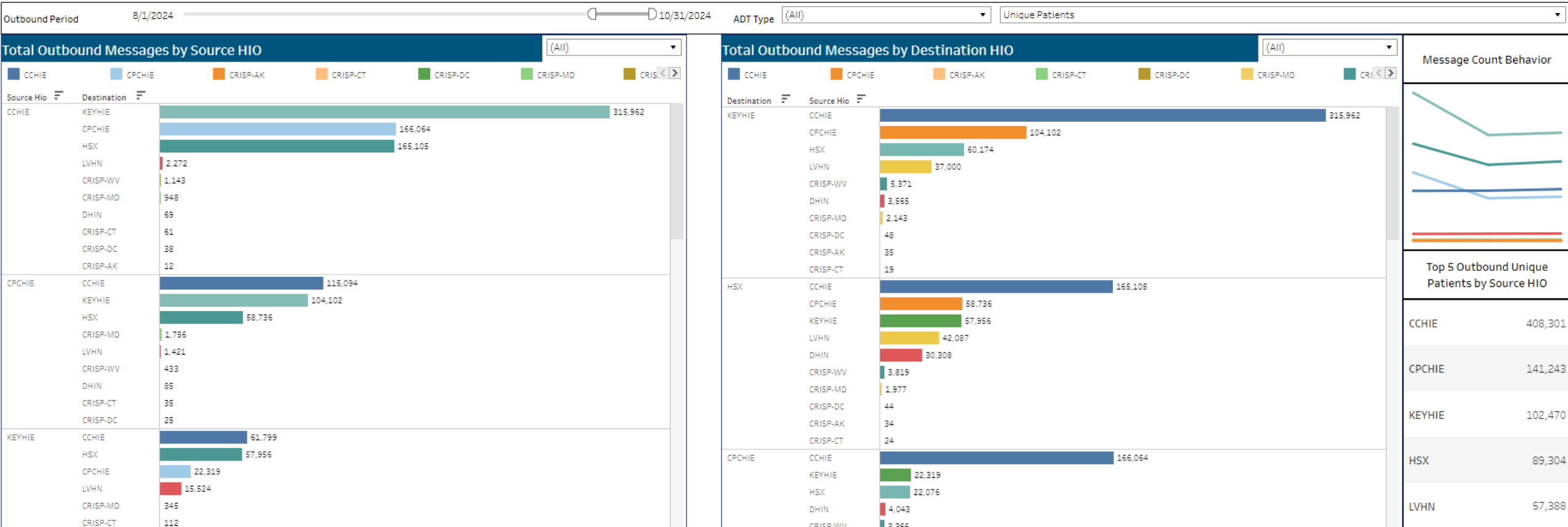


P3N ADT Service Unique Patients Sent (Aug-Oct 2024)

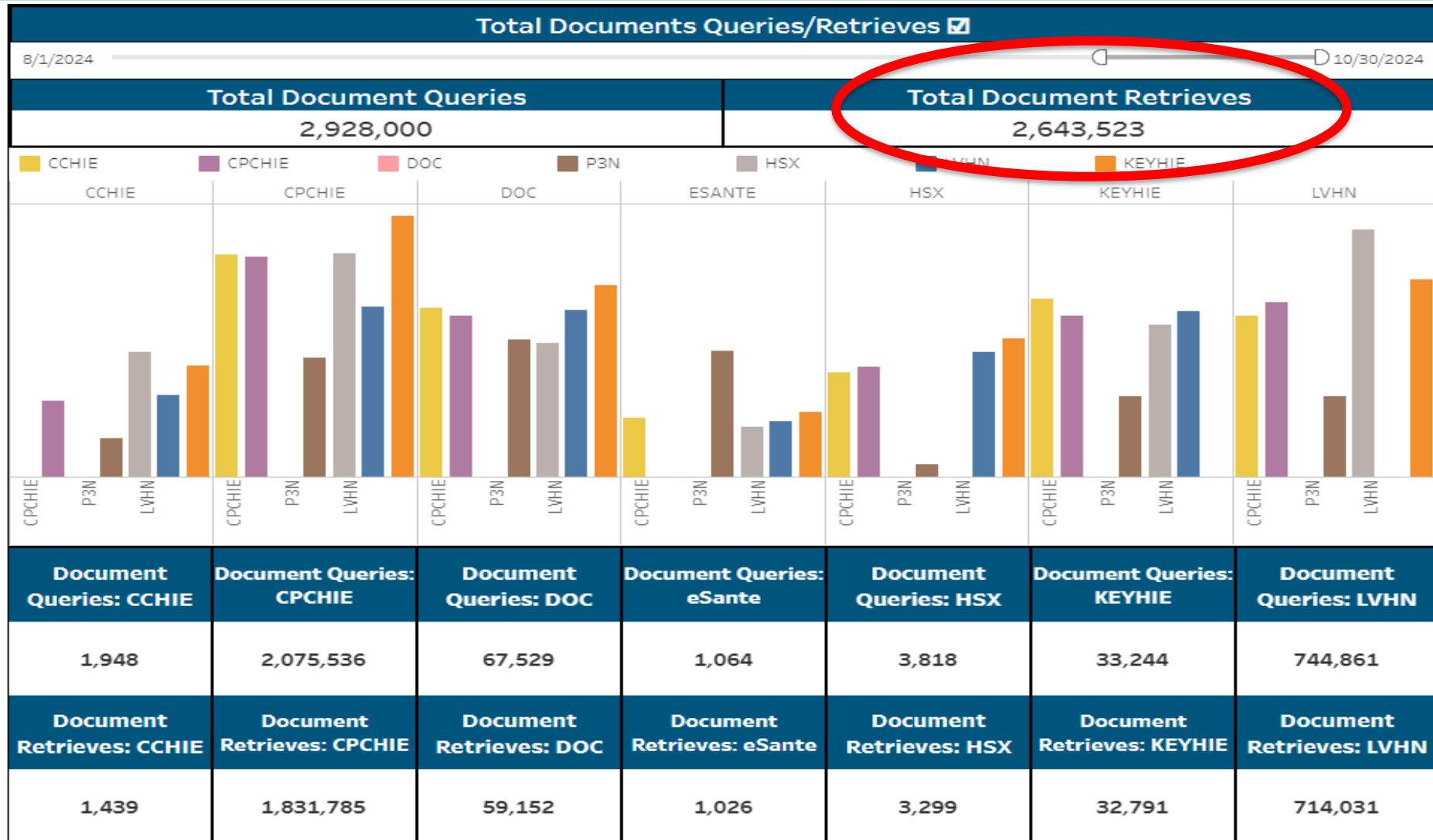
Outbound Totals

Unique Patients Outbound Messages by Source HIO

820,350



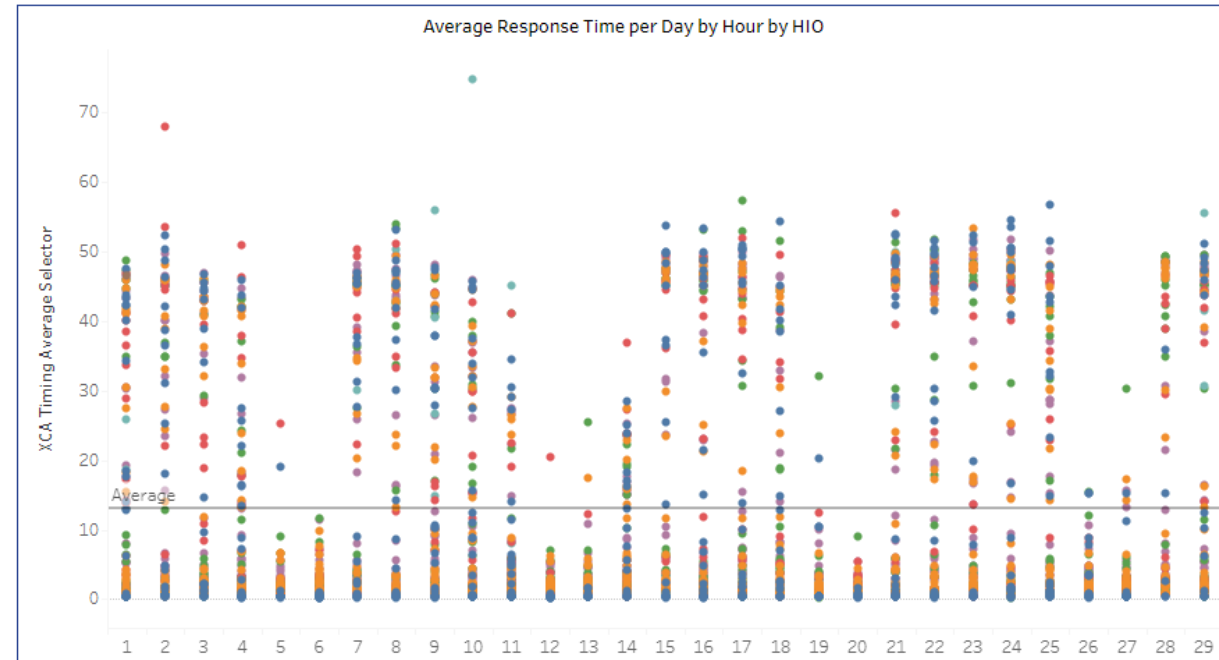
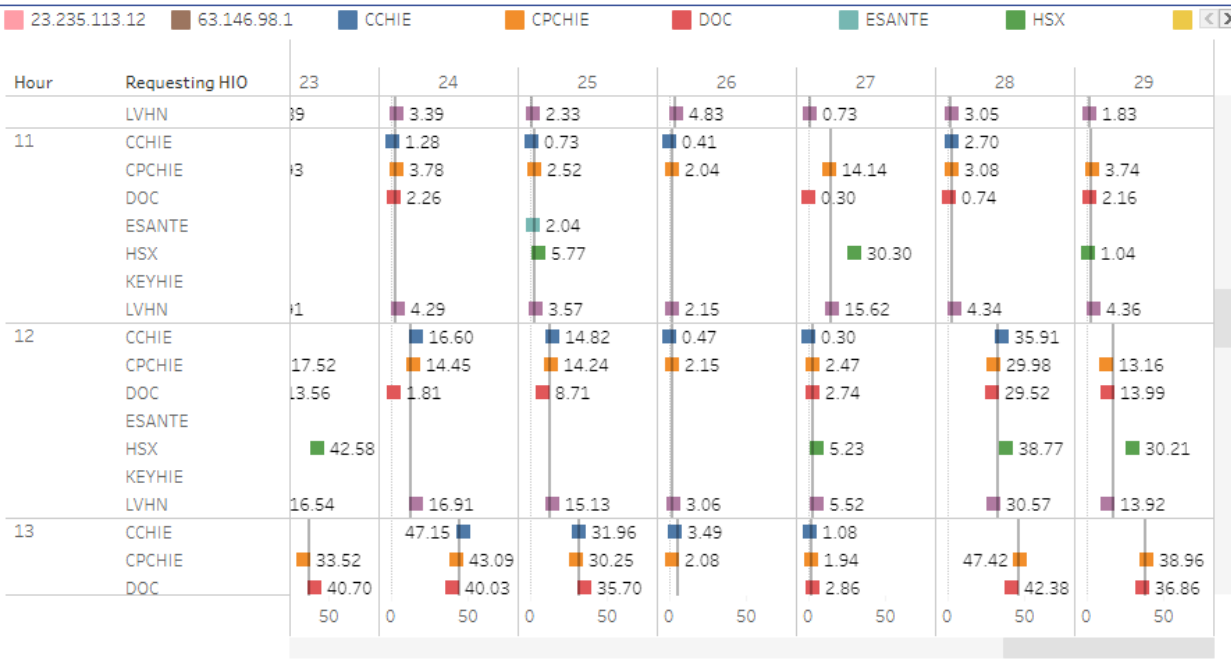
P3N Interop Report (Aug-Oct 2024)



P3N Participant XCA Retrieve Timing Report (Jul 2024)

Overall Monthly Averages (seconds)

| CCHIE | CPC | eSante | HSX | KEYHIE | LVHN |
|-----------------------|---------|---------|------------------------|---------|---------|
| October | October | October | October | October | October |
| 12.67 | 4.968 | 0.2771 | 9.101 | 13.02 | 1.208 |
| Requesting HIO: (All) | | | Responding HIO: KEYHIE | | |



PA DOH Data Modernization Initiative Priorities & Projects

Muneeza Iqbal

Deputy Secretary, Health Resources & Services

PA Department of Health

and

Rae-Ann Ginter

Director, Health Informatics Office

PA Department of Health



DMI Overview

CDC Public Health Data Strategy (PHDS) & Council for State and Territorial Epidemiologists (CSTE) Data Modernization Initiative (DMI) Principles



Building the Right Foundation with an *Enterprise Approach*



Accelerate Data into Action



Develop State-of-the-Art *Workforce*

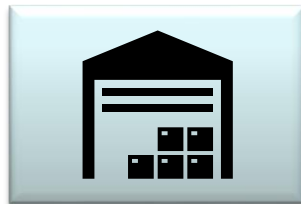


Support and Extend Partnerships & *Innovation*

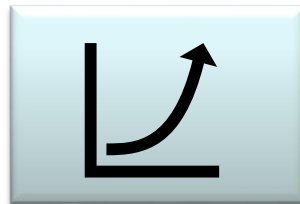


Manage *Security, Change and Governance*

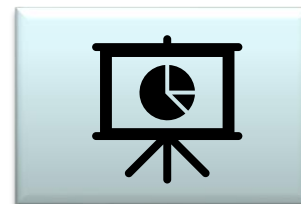
2024-2025 PHDS Goals



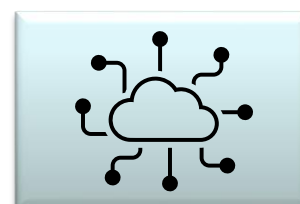
Strengthen the core public health data



Accelerate access to analytic and automated solutions to support public health investigations and advance health equity



Visualize and share insights to inform public health action



Advance more open and interoperable public health data



DOH Alignment with the PHDS

Strategy

Improve population health by ensuring secure and timely access to quality health data and statistics.

Through our partnership with public health professionals, enhance and expand upon the use of data and statistics to drive public health policy and program decisions

DOH Alignment with the PHDS

Goals

Ensuring the use of accessible, timely, reliable & meaningful data & statistics.

Focus Areas

Building the appropriate infrastructure foundation, accelerating data into action, support and extend partnerships and manage change and governance.

DOH Alignment with the PHDS

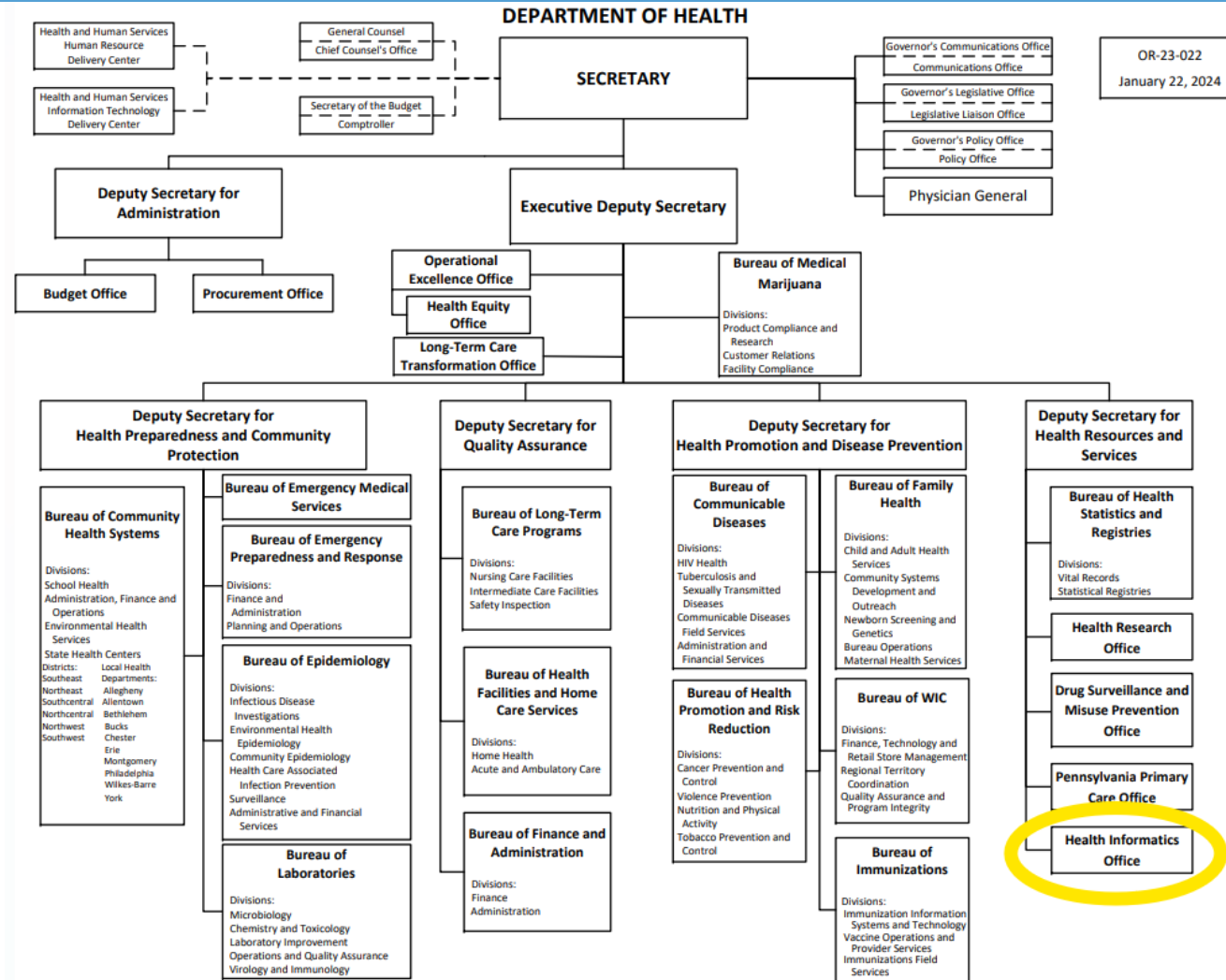
Goals

Ensuring the use of accessible, timely, reliable & meaningful data & statistics.

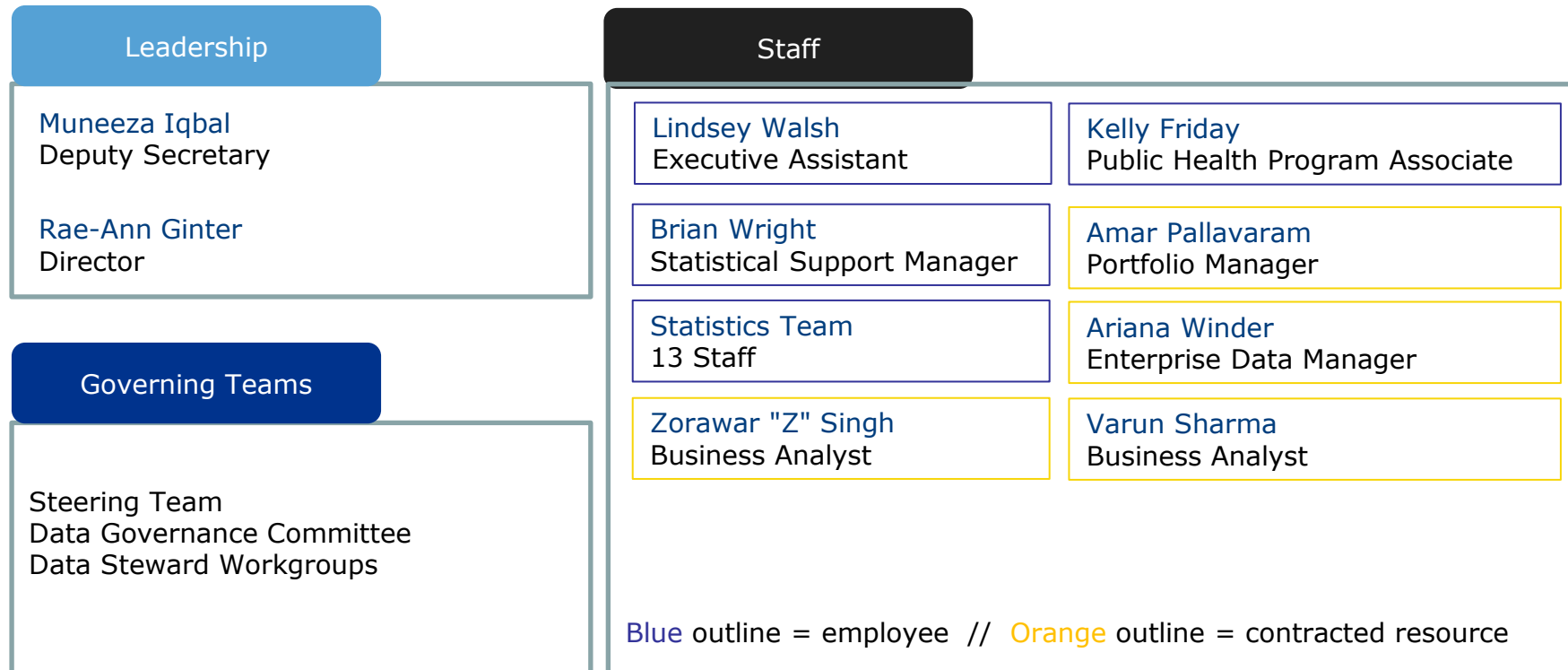
Focus Areas

Building the appropriate infrastructure foundation, accelerating data into action, support and extend partnerships and manage change and governance.

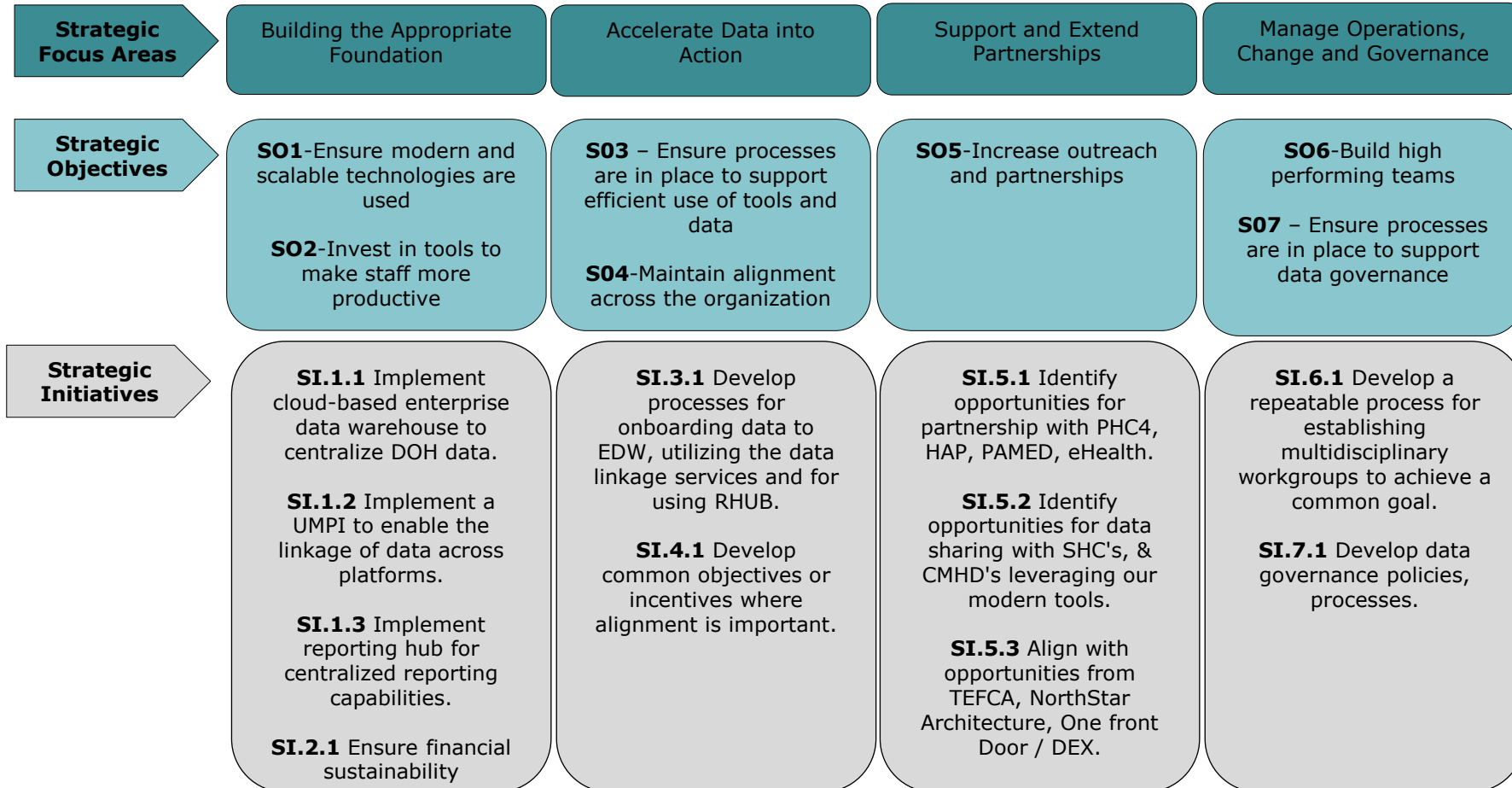
DOH Health Informatics Office



DOH Health Informatics Office



DOH DMI Strategic Objectives / Initiatives



Projects aligned to strategic initiatives

SI.1.1 Implement cloud-based enterprise data warehouse to centralize DOH data.

- ✓ *Data from PDMP has been onboarded and are currently onboarding PANEDSS data to this data lake and synapse environment.*

SI.1.2 Implement a UMPI to enable the linkage of data across platforms.

- ✓ Provide capabilities to uniquely identify individuals and enrich demographic data. These services have been leveraged by PDMP, PANEDSS and IIS, totaling 25+ million unique identities.

SI.1.3 Implement reporting hub for centralized reporting capabilities.

- ✓ Provide secure data sharing capabilities for record level data. STD Morbidity Data sharing with Allentown Health Department and will soon be working on sharing PDMP dispensation data with Philadelphia and Allegheny County Health Departments.

Projects aligned to strategic initiatives (continued)

SI.2.1 Ensure financial sustainability

- *Partnership with EDO cost sharing for Verato at the Commonwealth level.*
- *PRR request for staffing and ongoing costs*
- *Cost sharing with programs*

SI.3.1 Develop processes for onboarding data to EDW, utilizing the data linkage services and for using RHUB.

- *EDW has established a project intake process*
- *Currently working on a process for reporting HUB.*

SI.4.1 Develop common objectives or incentives where alignment is important.

- *Working to maintain alignment through education.*

Projects aligned to strategic initiatives (continued)

SI.5.1 Identify opportunities for partnership with PHC4, HAP, PAMED, eHealth.

- *Meet monthly with our partners to provide updates and collaborate on opportunities when appropriate.*
- *BCHS evaluating eHealth P3N provider portal.*

SI.5.2 Identify opportunities for data sharing with SHC's, & CMHD's leveraging our modern tools.

- *Met with CMHD's in October requesting feedback on their data needs / challenges.*

SI.5.3 Align with opportunities from TEFCA, NorthStar Architecture, One front Door / DEX.

- *Continue to attend meetings and collaborate on opportunities when appropriate.*
- *Submitted project request to the Implementation Center's Program for assistance with conducting a FHIR and TEFCA readiness assessment.*



Projects aligned to strategic initiatives (continued)

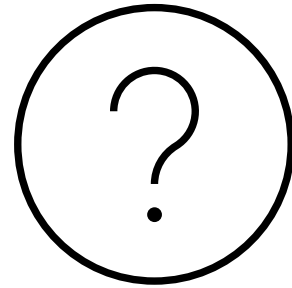
SI.6.1 Develop a repeatable process for establishing multidisciplinary workgroups to achieve a common goal.

- *Not started. Plan to spend time on this in 2025.*

SI.7.1 Develop data governance policies, processes.

- *Established DMI Steering Team, DMI Governance Committee*
- *Multiple deliverables from the DGC*
 - *Standard definitions*
 - *Data Catalog*
 - *Data Sharing Guidebook*

QUESTIONS



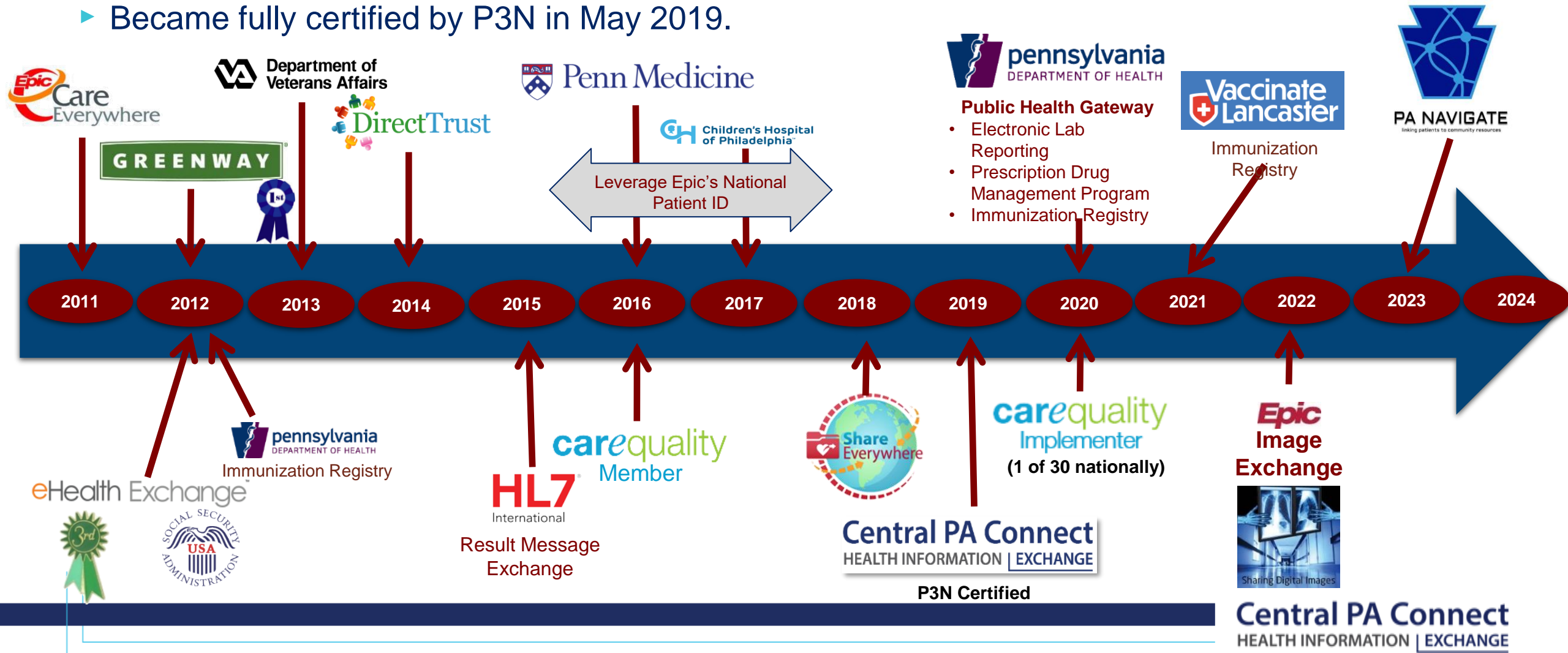
P3N Advisory Board Update

Keith Cromwell, M.Ed.
Senior Program Director

November 1, 2024

Background

- ▶ Founded and administered by Penn Medicine Lancaster General Health
- ▶ Became fully certified by P3N in May 2019.



Service Offerings



- ▶ CCD exchange (CPC & P3N) with deep integration
- ▶ Encounter Notification Service (ADT)
- ▶ Opt Out Management
- ▶ HIE Education
- ▶ Maintenance of Digital Certificates



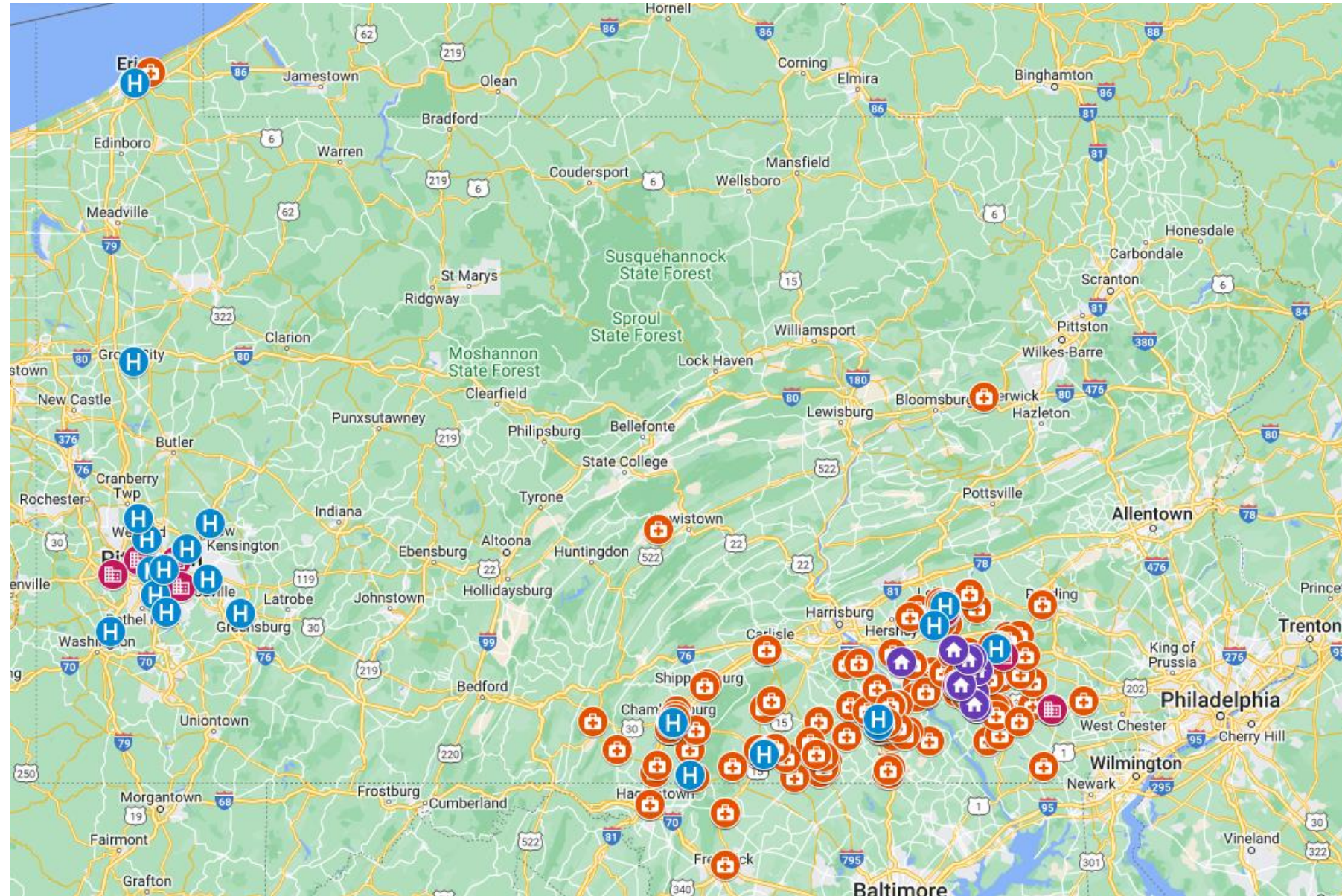
All offered in Connect in addition to:

- ▶ Discrete sharing of orders/results for laboratory, radiology, and select cardiology
- ▶ Discrete sharing of clinical notes
- ▶ Public Health Gateway Connection
 - ▶ PIERS (Immunization Registry)
 - ▶ Prescription Drug Management Program
 - ▶ Electronic Laboratory Reporting



Coverage Area

- ▶ 25 Hospitals
- ▶ 13 Urgent Care Centers
- ▶ 10 Post Acute Long Term Care Facilities
- ▶ 500+ Physician Practices



Penn Medicine
Lancaster General Health

Impacts

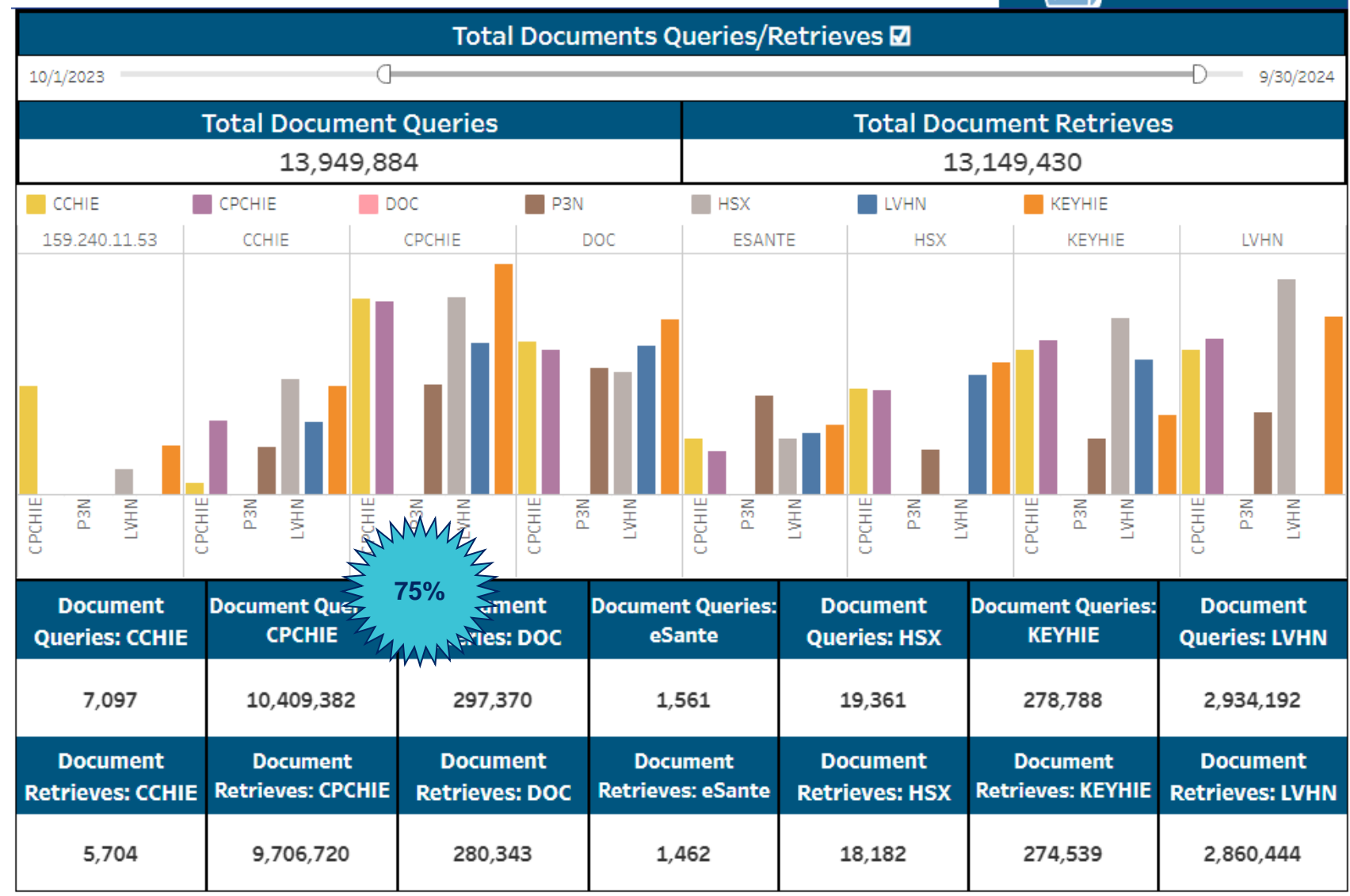
(10/1/23 -9/30/24)

CCD

- ▶ Processed over 10M document queries 75% of document queries across the P3N
- ▶ 93% of documents listed are actually retrieved by our members.
- ▶ Representing over 1.9M distinct patients.

ADT

- ▶ Processed over 2.6M ADT messages
- ▶ Furthest - Allegheny General Hospital to Guam (8072 mi)



PA Navigate

Connections Live:



Penn Medicine
Lancaster General Health



PA NAVIGATE
linking patients to community resources

Signed – Implementation Phase:



Penn Medicine

Targets / Contract Negotiations:



United Way
of Lancaster County



Central PA Connect
HEALTH INFORMATION | EXCHANGE

Questions

Kay Shaffer

Project Manager

Pennsylvania eHealth Partnership Program

Office of Medical Assistance Programs

Pennsylvania Department of Human Services



pennsylvania
DEPARTMENT OF HUMAN SERVICES

Pennsylvania eHealth Partnership Program

***Annual Report to the Governor and General Assembly
Under Act 76 of 2016
July 1, 2023-June 30, 2024***



Draft Letter from the Secretary

To: Governor Josh Shapiro
President Pro Tempore, Kim L. Ward
Speaker of the House of Representatives, Joanna E. McClinton

The Pennsylvania Department of Human Services (DHS) is pleased to present the Pennsylvania eHealth Partnership Program (PA eHealth) Annual Report, which covers state fiscal year 2023-2024 from July 1, 2023, to June 30, 2024.

PA eHealth is responsible for the infrastructure that enables health information exchange within the state. Since 2012, PA eHealth has led stakeholders from the public and private sectors in designing, implementing, and improving Pennsylvania's secure health information exchange, known as the PA Patient and Provider Network, or P3N. The P3N serves as the singular hub to inter-connect P3N Certified Health Information Organizations (HIOs) and their participating healthcare provider and payer entities to each other, and to select state agencies and public health registries.



Draft Letter from the Secretary (cont.)

Initial work was focused on establishing the P3N, certifying and onboarding the five Pennsylvania HIOs, incentivizing health care providers to transition from paper medical “charts” to electronic health records (EHR), and incentivizing medical facilities and Medicaid (MA) managed care organizations (MCOs) to participate with HIOs. Now, PA eHealth’s efforts are focused on modernizing and expanding the capabilities of the P3N, increasing participation in health information exchange (HIE) and leveraging the P3N to address health related social needs (HRSN) and monitor public health – with the main objective of providing all Pennsylvanians with more coordinated, better-informed health care and more effective tools to address their social needs.

PA eHealth is instrumental in helping DHS achieve its goals of delivering integrated whole-person care and controlling health care costs. We are proud of the progress we’ve made this year, especially implementing a statewide closed-loop referral system to address HRSNs.

Draft Letter from the Secretary (cont.)

PA Navigate is a groundbreaking resource that enables greater collaboration between health care and social services organizations by allowing them to more easily and effectively work together to treat and support the whole person. A person's individual situation is complex, and factors like poverty, lack of stable housing, and food insecurity often impact an individual's or family's health. We must consider the whole person when delivering health care, and no single provider or community-based organization can help someone fully address all their needs. PA Navigate, funded by DHS with American Rescue Plan Act (ARPA) has been integrated with HIEs to make it easier for health and service providers to coordinate and collaborate, easing barriers to care and improving health outcomes, to provide a better quality of life for all Pennsylvanians.

This report provides a summary of PA eHealth's activities and accomplishments, a summary of receipts and expenditures, a list of contracts entered, and a summary of reportable breaches.

Sincerely,

Valerie A. Arkoosh, MD, MPH

Secretary, Department of Human Services



1. Enable ubiquitous, robust HIE

Fiscal Year 2023-2024 Accomplishments:

- Began real-time bi-directional Admission/Discharge/Transfer (ADT) message exchange with Chesapeake Regional Information System for our Patients (CRISP) for the states of Maryland, West Virginia, Connecticut, Alaska, and the District of Columbia.
- The Lehigh Valley Health Network (LVHN) began ingesting P3N ADTs in August 2023.
- PA Navigate HIOs contracted with findhelp as the statewide platform to facilitate closed-loop referrals for Health-Related Social Needs (HRSN); PA Navigate launched in January 2024.
- Began discussions with Ohio on exchanging ADTs with the P3N.
- Successfully completed testing for new state hospital electronic health record (EHR) system; first one to go live in August 2024.
- CCHIE added three hospitals (Millcreek, Conemaugh, and Indiana).
- LVHN added three new hospitals (Gilbertsville, Macungie, and Highland Avenue) to the P3N.
- National presentations on PA Navigate at the Civitas Annual Meeting and the State Health IT Connect Summit.
- Began using P3N Patient Portal on a pilot basis.

▶ 1. Enable ubiquitous, robust HIE (cont.)

Fiscal Year 2023-2024 Accomplishments:

- Moderated extensive discussions throughout the year with the P3N Health Information Exchange Trust Community Committee (HIETCC) and the PA eHealth Partnership Advisory Board regarding the Trusted Exchange Framework and Common Agreement (TEFCA) and the potential chilling effect it could have on regional and statewide HIE as EHR vendors become QHINs.
- Raised TEFCA concerns directly with Civitas, the Office of the National Coordinator for Health Information Technology (ONC), and the Center for Medicare and Medicaid Services (CMS).

2. Increase timely access, accuracy, and availability

Fiscal Year 2023-2024 Accomplishments:

- Onboarded Washington Health and Punxsutawney Area Hospital to the P3N Public Health Gateway (PHG) for reporting high risk findings to the Pennsylvania electronic Laboratory Registry
- Onboarded Penn Medicine to the P3N PHG to reduce the cost of querying the Pennsylvania Prescription Drug Monitoring Program (PDMP).
- Educated health care providers on the electronic Case Reporting (eCR).
- Created new P3N Performance Workgroup, which began monthly meetings in January 2024.
- Created new P3N Consent Workgroup, which began monthly meetings in January 2024.
- Developed and deployed more detailed monitoring dashboards/reports for Inbound ADTs and HIO response time to P3N queries.
- Continued work with the DHS Office of Developmental Programs (ODP) on condition-specific surveillance of ADTs.
- Implemented PA Navigate.
- Secured DHS access to PA Navigate activity dashboard/reports.
- Secured additional incentive funding for community-based organizations (CBOs) to claim their PA Navigate listings and respond to PA Navigate referrals.

3. Improve upon our existing P3N services

Fiscal Year 2023-2024 Accomplishments:

- Expanded monthly reporting to CMS.
- Secured enhanced MMIS funding (75/25) for P3N maintenance and operations.
- Facilitated extensive discussions with DHS and findhelp towards enabling bi-directional data sharing to improve state operations and enhance PA Navigate experiences for navigators and persons in need of social services.
- Renewed discussions with Department of Aging on hosting AAA care plans to the P3N Care Plan registry.

4. Alert patient care teams to relevant patient encounters

Fiscal Year 2023-2024 Accomplishments:

- Began real-time bi-directional ADT message exchange with CRISP for the states of MD, WV, DC, CT, and AK.
- Encouraged HIOs to onboard Nursing homes to the P3N ADT Service.
- Conemaugh Memorial Medical Center began sending ADTs to the P3N ADT Service with incentives from UPMC Health Plan
- Increased the number of emergency departments (ED) sending ADTs to the P3N ADT Service by 161% to 391 EDs.
- Increased the number of inpatient facilities sending ADTs to the P3N ADT Service by 122% to 436 inpatient facilities.
- Increased the number of ADT messages sent by the P3N by 15%, more than 62 million.
- New enhanced P3N Inbound ADT Dashboard provides facility-specific ADT message information for mapping and for various patient demographic characteristics.
- Continued developing capability to identify possible abuse/neglect cases for ODP program participants.

5. Support care coordination to improve quality

Fiscal Year 2023-2024 Accomplishments:

- Major health system saved hundreds of thousands of dollars per year by switching from Bamboo Health to the P3N PHG for accessing the Pennsylvania PDMP.
- PA Navigate went live in January 2024 as a statewide closed-loop referral network to address health-related social needs (HRSN) and integrate with P3N-certified HIOs.
- DHS submitted 1115 Waiver Request to CMS to address HRSNs and leverage PA Navigate.
- Met with Medical Assistance Managed Care Organizations (MCO) and HIOs to ensure valuable access to alerts, clinical, and quality data to improve whole-person care.
- Conemaugh Health and Indiana Regional Medical Center onboarded to the P3N ADT Service.
- Pursued a P3N change request to better support ClinicalConnect HIEs ability to deliver alerts to its members when their patients access health care services.
- Participated in extensive discussion with the Department of Health about allowing HIOs to facilitate health plan access to immunization information for their enrollees.

6. Improve patient outcomes and satisfaction

Fiscal Year 2023-2024 Accomplishments:

- Worked with the Office for Information Technology, Pennsylvania Office of Administration, on requirements for newer technology for identity-proofing P3N patient portal access.
- Worked with Optum and MCOs to authorize the sharing of Obstetrics Needs Assessment Forms (ONAF) with the P3N.
- Incorporated Tableau heat mapping in new P3N monitoring dashboard/reports.
- Developed and received CMS approval for an RFP for a competitive re-procurement of the P3N.
- Successfully transitioned P3N PHG participants from the old Pennsylvania State Immunization Information System (PA-SIIS) to the new Pennsylvania Immunization Electronic Registry System (PIERS), providing improved access to immunization information through the PHG.

7. Optimize HIE stakeholders' experience

Fiscal Year 2023-2024 Accomplishments:

- P3N Performance Work Group has helped to identify problems with HIO responsiveness to P3N queries.
- Created new P3N Tableau Dashboards for understanding ADT activity and P3N HIO responsiveness.
- Trained HIOs on the use of P3N Tableau Dashboards

Summary of Receipts and Expenditures

Receipts Detail Report

PA eHealth Partnership Program (July 1, 2023–June 30, 2024)

Business Area 21

| Description | Transaction Amount | Notes |
|-----------------------|-------------------------|-----------------------------------|
| Budget Amount | \$ 16,117,677.00 | SFY 23/24 Budget Across all Funds |
| Deposit - Interagency | \$ 630,300.00 | SFY 23/24 P3N HIO User Fees |
| TOTAL | \$ 16,747,977.00 | |

Summary of Expenditures

PA eHealth Partnership Program (July 1, 2023–June 30, 2024)

Business Area 21

| Expenditure Type | Expended Amount |
|------------------|-------------------------|
| Personnel | \$ 675,109.39 |
| Operational | \$ 1,416,578.75 |
| Grants | \$ 10,313,750.00 |
| Total | \$ 12,405,438.14 |



List of Contracts

List of Contracts Executed by the Pennsylvania eHealth Partnership Program (July 1, 2023-June 30, 2024)

Business Area 21

| Contract Type | Grantee Name | PA Vendor # | Contract # | Contract Amount | Notes |
|-----------------------------|--------------|---------------|------------|-----------------------|--------------------------------|
| Funds Commitment Adjustment | CCHIE | 793238 | 4100093499 | \$1,535,000.00 | Resource & Referral Tool Grant |
| Funds Commitment Adjustment | CPCHIE | 117652 | 4100093500 | \$1,535,000.00 | Resource & Referral Tool Grant |
| Funds Commitment Adjustment | HSX | 777978 | 4100093501 | \$1,535,000.00 | Resource & Referral Tool Grant |
| Funds Commitment Adjustment | KeyHIE | 556001 793238 | 4100093502 | \$1,535,000.00 | Resource & Referral Tool Grant |
| TOTAL | | | | \$6,100,000.00 | |



Reportable Security Breaches

- The Pennsylvania Patient and Provider Network (P3N) experienced no reportable security breaches in 2023-2024.





PA NAVIGATE
linking patients to community resources

Central PA Connect **KeyHiE**
HEALTH INFORMATION | EXCHANGE
Keystone Health Information Exchange®

HSX **ClinicalConnect**
Health Information Exchange

 **pennsylvania**
DEPARTMENT OF HUMAN SERVICES

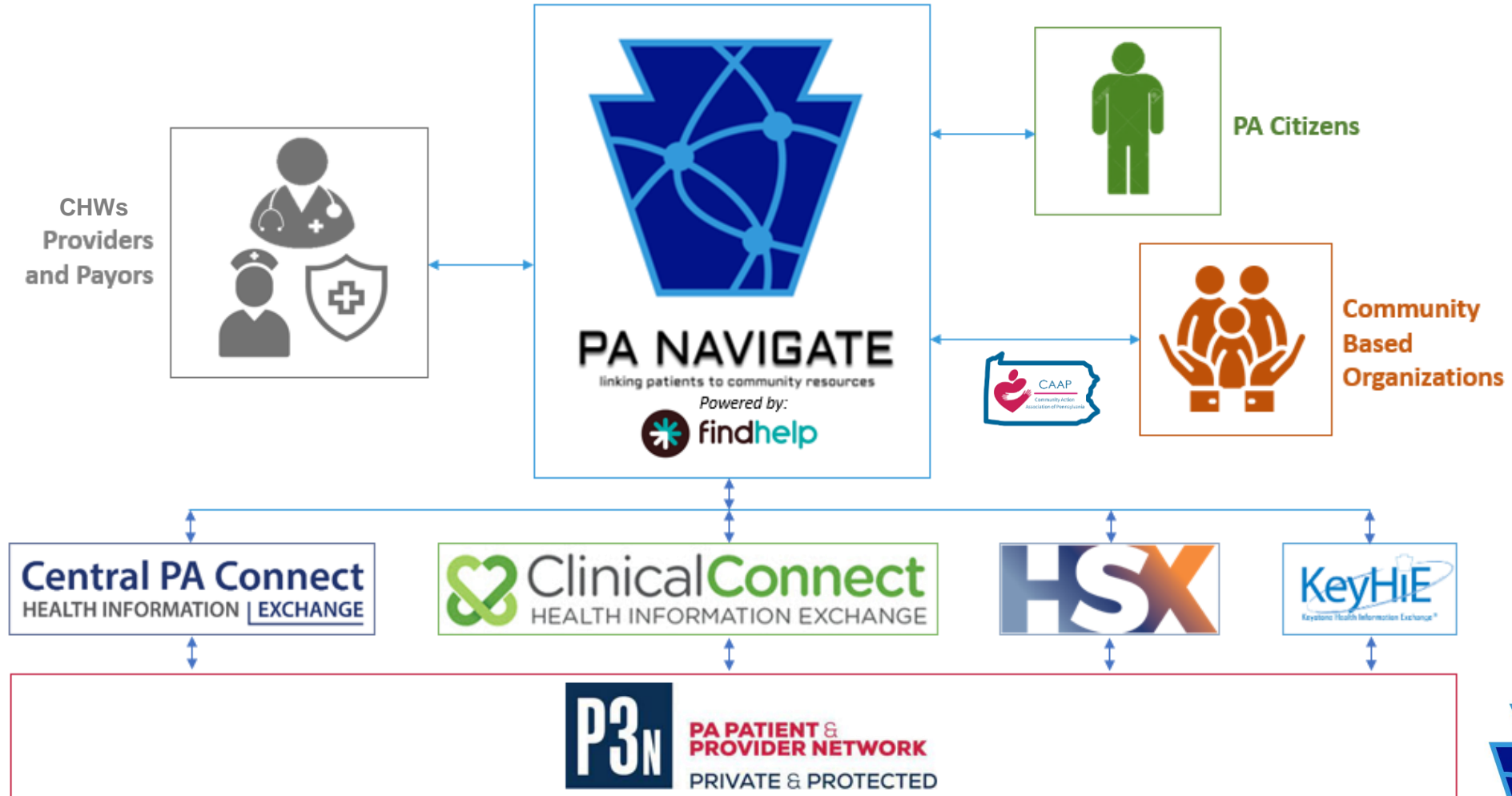
PA Navigate Update

Keith Cromwell, M.Ed.
Senior Program Director, Central PA Connect HIE

November 1, 2024



PA Navigate



Additional Funding & Enhancements

Additional Funding (\$6.1M in total)

- ▶ \$2M – to HIE's for ongoing operations to make PA Navigate Successful
- ▶ \$2M – to enhance and grow the CBO incentive program (adding to the initial \$1M in CBO incentive dollars)
- ▶ \$2.1M – to support Community Action Association of Pennsylvania (CAAP) and its members in creating infrastructure to support the rollout of PA Navigate to the CBO community.

Enhancements

- ▶ Extended the deadline of utilization of onboarding grants to September 30, 2025.
- ▶ Allows swaps of integration partners with email approval from PA eHealth as opposed to contract amendments.



Education Sessions / Conferences

- ▶ 8/5: SEPA Regional HEAT group
- ▶ 8/13: PMCH NEPA Knowledge Cafe
- ▶ 8/13: Perry County Provider Fair
- ▶ 9/5: PA VETCON (Military & Veteran Affairs)
- ▶ 9/10: DHS/Maximus PA Enrollment Program
- ▶ 9/19: PA Senate Democratic Caucus Retreat
- ▶ 9/25: CHC Partnership Meeting (BH MCOs)
- ▶ 10/7: PA Perinatal Quality Collaborative
- ▶ 10/21: Philadelphia Health Equity Collaborative
- ▶ 10/21-24: Community Action Association of Pennsylvania CBO Convening & Conference
- ▶ 10/24: PA Association of County Human Service Administrators



Current Integration / Onboarding Status

- ▶ 11 Currently Live on PA Navigate (natively or via Coalition Sharing)

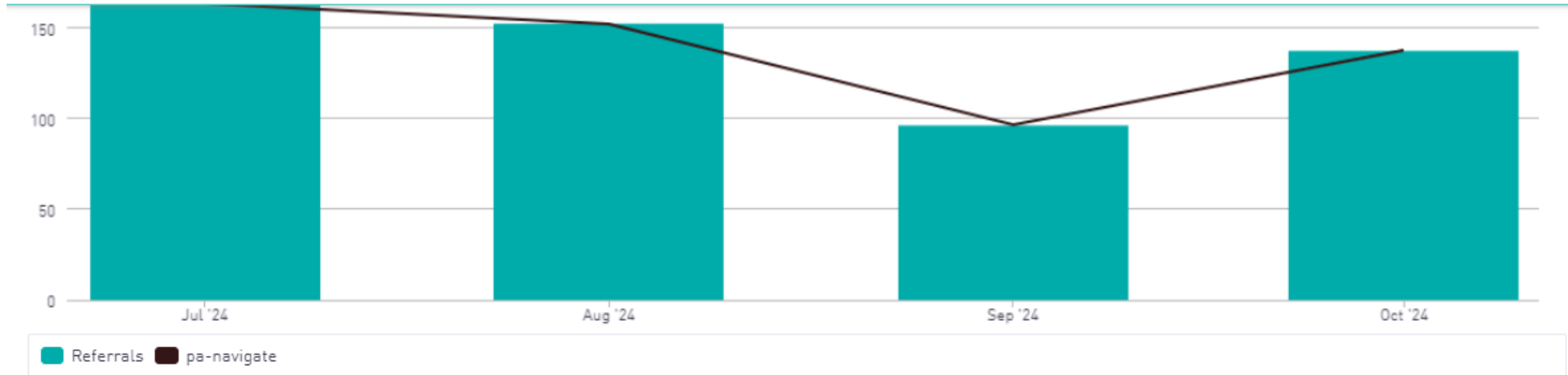


- ▶ 12 organization in active implementation
- ▶ Many in contract negotiations

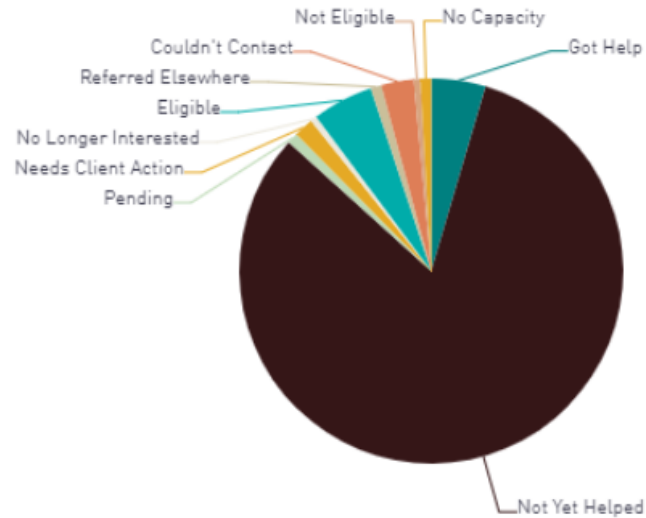


Current Statistics

(4 months 7/1/24 - 10/28/24)



① Current Referral Statuses | 2024-07-01 to 2024-10-28



①

300

Seekers Referred

①

98

Referrals with Responses

①

56

Closed Loop Referrals

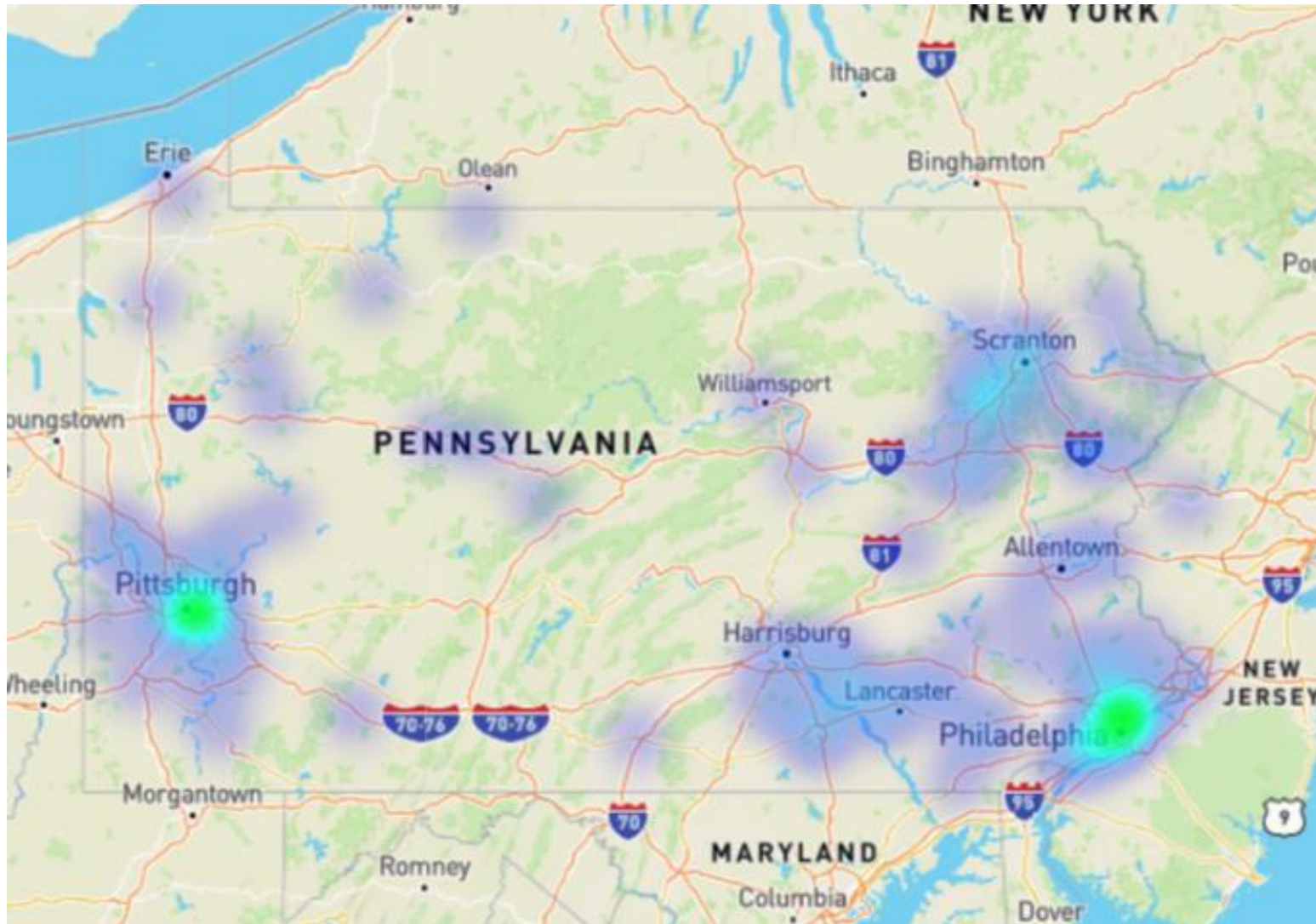
①

21

Seekers that Got Help



Concentration of Search Activities



Questions & Open Discussion

New TEFCA Developments

Martin Ciccocioppo

Director

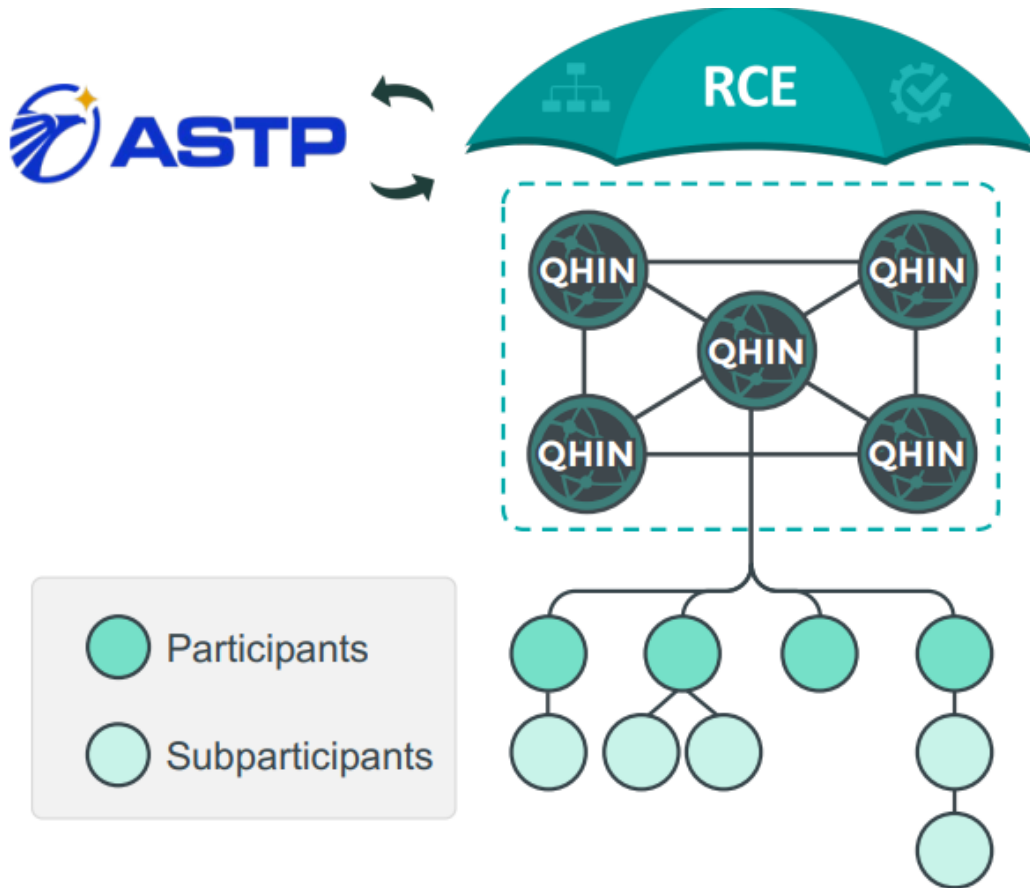
Pennsylvania eHealth Partnership Program

Office of Medical Assistance Programs

Pennsylvania Department of Human Services



Exchange Under TEFCA



ASTP defines overall policy and certain governance requirements

RCE provides oversight and governing approach for QHINs

QHINs connect directly to each other to facilitate nationwide interoperability

Each QHIN connects Participants, which connect Subparticipants

Participants and Subparticipants connect to each other through TEFCA Exchange

- Participants contract directly with a QHIN and may choose to also provide connectivity to others (Subparticipants), creating an expanded network of networks
- Participants and Subparticipants sign the same Terms of Participation and can generally participate in TEFCA Exchange in the same manner

Framework Agreements

Framework Agreements and TEFCA connections

Common Agreement

Each QHIN voluntarily enters into the same contractual agreement with the RCE by signing the Common Agreement

Participant/Subparticipant Terms of Participation

All Participants and Subparticipants voluntarily agree to the Terms of Participation without modification as part of their agreements with their TEFCA connector

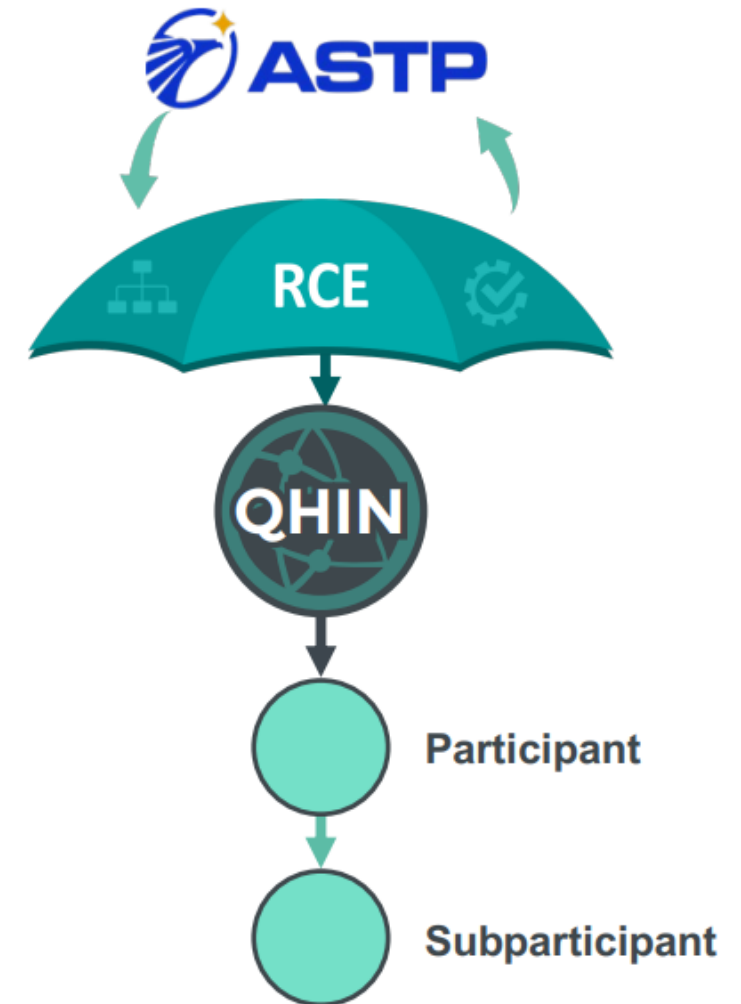
TEFCA connector

A QHIN, Participant, or Subparticipant that offers services to connect into TEFCA exchange

TEFCA connected entity

A QHIN, Participant, or Subparticipant that has signed a Framework Agreement

Entities may connect into exchange at any level



QHIN Application and Onboarding & Designation

Letters of Intent

- Inactive – 10
- Active – 3

Completeness Review

•0

Applications Accepted

•1

Partner Testing & Project Plan Completion

•1

Submitting Application

•0

Definitive Review

•0

Conformance Testing

•1

Designated

•7

TEFCA QHINs and Candidate QHINs



Meet The Candidate QHINs



Participation in TEFCA is Ramping Up!

10,385 entries in the RCE Directory:

- 1,697 total organizations are live
 - 7 QHINs
 - 112 Participants
 - 1,578 Subparticipants
- 8,688 Child entries (parts of the above, not individual organizations with Framework Agreements)

TEFCA and Public Health

Rationale: Access to health information is an important tool for Public Health Authorities (PHAs) to, among other things:

- Assess and monitor population health
- Investigate, diagnose, and address health hazards and root causes.

Initial Use Cases: The XP Implementation SOP includes specifications for two use cases that allow PHAs to identify disease trends, track and monitor outbreaks, and prevent and control future outbreaks:

- Electronic Case Reporting, and
- Electronic Laboratory Reporting

Jurisdiction: Given the importance of jurisdiction in public health reporting, the technical specifications referenced in the XP Implementation SOP include both the Health Care Provider's location and the patient's residence.

Chilling Effect of TEFCA on HIE in Pennsylvania

TEFCA is like a national version of the federated health information exchange ecosystem we have in Pennsylvania.

In Pennsylvania we have a very robust federated statewide health information exchange (i.e., Verato referential MPI, two-way access to public health registries, query and retrieve, Admission Discharge Transfer (ADT) message alerting service, care plan registry, and patient portal) that we call the Pennsylvania Patient and Provider Network (P3N) with a newly integrated statewide closed-loop referral system for addressing health-related social needs (HRSN) that we call PA Navigate.

Our participants include: Department of Human Services, which hosts the P3N; five P3N-certified health information organizations (HIOs); Department of Health, which hosts several state registries (i.e., PIERS, PDMP, eLR, cancer) our participants access through the P3N; Department of Corrections, which has a P3N-integrated EHR; and neighboring state HIEs for ADT sharing.

TEFCA became operational in the last year with a very limited query and retrieve use case. Since health care provider EHRs can only be connected to a single TEFCA Qualified Health Information Network (QHIN), and several EHR vendors and national HIEs are now Designated QHINs or Candidate QHINs, TEFCA participation growth in Pennsylvania is a threat to our much more robust health information exchange in Pennsylvania.

Chilling Effect of TEFCA on HIE in Pennsylvania continued

At this time, all P3N-Certified HIOs have opted out of the National eHealth Exchange (eHX) QHIN and have opted out of the Epic QHIN, because so many of their provider members use EHR vendors that are, or are becoming, designated HIO. While Epic is not mandating customer participation in its QHIN, Epic is forcing our Epic-based HIOs to join the Epic QHIN in order to stay on the Epic Honor Roll to get up to 10% Epic fee rebates.

The firm requirement that a health care provider's EHR can only be a participant, or downstream participant, in a single QHIN poses a very real threat not only to our regional and statewide HIE, but many local HIEs across the country.

TEFCA was designed for HIEs like the P3N to become QHINs, not for EHR vendors to become QHINs. Now that EHR vendors are QHINs, HIEs are largely prevented from participating in TEFCA for fear that their participants will not be able to be a member of their EHR vendor's QHIN and a local HIE that participates in a QHIN.

The first TEFCA QHINs were designated in December 2023; we are still waiting to see what impact HIO members' participation in their EHR vendor operated QHIN in Pennsylvania will have on P3N HIO participation.

Advisory Board Vice Chair Election

Pennsylvania eHealth Partnership Advisory Board Bylaws

Section 4. Vice Chairperson.

The Advisory Board members shall annually elect, by a majority vote of the members, a vice chairperson from among the appointed members of the Advisory Board, who shall serve as acting Chairperson in the absence of the Chairperson or if there is a vacancy in said Chairpersonship.

Nominations for Vice Chairperson were opened during the August 2, 2024, Advisory Board Meeting.

Current Vice Chairperson, Julie Korick, was nominate and agreed to serve if re-elected.

Nomination are open and the Vice Chairperson election is to be held during the November 1, 2024, Advisory Board for Calendar Year 2025.

2025 Advisory Board Meetings

- Friday, February 7, 2025, in-person at 2525 Seventh Street, Harrisburg, 10 a.m. – 2 p.m.
- Friday, May 2, 2025, in-person at 2525 Seventh Street, Harrisburg, 10 a.m. – 2 p.m.
- Friday, August 1, 2025, in-person at 2525 Seventh Street, Harrisburg, 10 a.m. – 2 p.m.
- Friday, November 7, 2025, in-person at 2525 Seventh Street, Harrisburg, 10 a.m. – 2 p.m.



Public Comment

- Name of submitter for written comment submission acknowledged by chair
- Verbal comment (3 minutes per commenter)

Online Resources

PA eHealth further information:

[eHealth Partnership | Department of Human Services | Commonwealth of Pennsylvania](#)

PA eHealth Partnership Advisory Board:

[eHealth Advisory Board | Department of Human Services | Commonwealth of Pennsylvania](#)

P3N HIO Certification Package:

[HIO Connection | Department of Human Services | Commonwealth of Pennsylvania](#)

P3N Certified Health Information Organizations (HIO) Information:

[Choose your HIO July 2023 v8.pdf \(pa.gov\)](#)

List of clinical documents available by each HIO and HIO Member Organizations:

https://www.pa.gov/content/dam/copapwp-pagov/en/dhs/documents/ehealth/documents/Discrete%20Data_October%202023.xlsx

List of facilities sending ADTs through their HIO to the P3N:

[23-APRIL-2024_WEBPOST-P3N-ADT-Onboarding.xlsx \(live.com\)](#)

PA Navigate:

<http://pa-navigate.org>