

Pennsylvania eHealth Partnership Advisory Board Meeting

February 6, 2026



**PA PATIENT &
PROVIDER NETWORK**
PRIVATE & PROTECTED



Pennsylvania
Department of Human Services

This Session is being Recorded

The Wiretap Act

It is against the law in Pennsylvania to record oral conversations without the permission of the individuals involved, in most circumstances.

Consent to Recording

This session is being recorded for record-keeping purposes. By participating in this session, you are consenting to the recording of this session for preparation of meeting minutes. At any time if you have a question or comment, feel free to place that in the chat, and we will respond to you as soon as possible. If you would like to ask your question or to comment verbally – please note that by doing so, you are consenting to the recording of your statements for preparation of meeting minutes.

Please Note: The Commonwealth does not approve of having Artificial Intelligence (AI) bots interacting with Commonwealth meetings.

Agenda

- 10 a.m. Welcome and Introductions
- 10:05 Minutes of November 7, 2025, Advisory Board Meeting
- 10:10 Health Information Exchange Trust Community Committee Updates
- 10:30 PA eHealth Partnership Program Initiatives
- 11:00 Six-Month Achievements and Metrics
- 11:30 PA Navigate State of the State and Future Collaboration
- 12:15 New Business
- 12:20 Public Comment
- 12:30 Adjournment



Welcome and Introductions

Paul McGuire

PA eHealth Advisory Board Chair



PA eHealth Advisory Board

Mr. NICK BARBERA, Senior Manager, SunStone Consulting
(Consumer Representative)

Ms. CAROLINE BEOHM, Policy Director, Pennsylvania Insurance Department
(Insurance Commissioner Designee)

Dr. MEGHAN MCNELLY BRECKLE, Vice President of Quality Improvement, PA Health & Wellness
(Health Plan/Payer Representative)

Mr. MARTIN CICCOCIOPPO, Director, PA eHealth Partnership Program
Pennsylvania Department of Human Services (Secretary of DHS Designee)

Ms. PAMELA E. CLARKE, Senior Director, Quality, Health Promotion Council
(House-Appointed HIO Representative)

Dr. ROBERT DANOFF, Director of Family Medicine Residency Program
Jefferson Health Northeast (Physician or Nurse Representative)

Mr. TRAVIS DAVIS, Executive Director of Long-Term Care, Department of Military and Veterans Affairs
(Long-term Care/Post Acute Representative)

Mr. JOSEPH FISNE, Associate Chief Information Officer, Geisinger Health System
(Senate-Appointed HIO Representative)

PA eHealth Advisory Board continued

Ms. MIA HANEY, Chief Executive Officer

PA Homecare Association (Home Care or Hospice Representative)

Ms. MUNEEZA IQBAL, Deputy Secretary for Health Resources and Services

Pennsylvania Department of Health (Secretary of Health Designee)

Mr. PAUL MCGUIRE, Senior Vice President, Country Meadows (Chair)

Mr. ISAIAH NATHANIEL, Senior Vice President and Chief Information Officer

Delaware Valley Community Health, Inc. (Community Health Center Representative)

Dr. MICHAEL A. SHEINBERG, Chief Medical Information Officer

Penn Medicine Lancaster General Health (House-Appointed HIO Representative)

Mr. MARK VOLOVIC, VP & Chief Information Officer, Indiana Regional Medical Center and Punxsutawney Area Hospital

(Hospital Representative)

Dr. MARGARETE ZALON, Professor Emeritus, Department of Nursing

The University of Scranton (Consumer Representative)

Mr. DON REED, Chief Operating Officer

HealthShare Exchange (Ex Officio Member - Nominated as House HIO Appointee)

Ms. PHYLLIS SZYMANSKI, President

ClinicalConnect HIE (Ex Officio Member - Nominated as Senate HIO Appointee)



HIE Trust Community Committee Updates

Phyllis Szymanski

President

ClinicalConnect HIE



HIE Trust Community Committee

Chairperson:

Alice Vuong, Director of Technology, HealthShare Exchange (HSX)

HIE Trust Community Committee Meeting Summaries:

- HIETCC Meeting Agenda, January 7, 2026
- HIETCC Meeting Minutes, December 3, 2025
- HIETCC Meeting Minutes, October 15, 2025

Recent HIE Trust Community Committee Topics

- PA NAVIGATE State of the State and Future Collaboration
- P3N Disaster Recovery Exercise, October 1, 2025
- HIETCC Cybersecurity Exercise, October 15, 2025
- Exploring Ways to Share Discrete Lab Results Across the P3N
- P3N Verato Master Patient Identifier Maintenance
- P3N Performance Workgroup
- P3N Query Qualifiers
- Admission Discharge Transfer (ADT) Message Sharing and Data Quality
- P3N and HIO Alignment with the CMS Health Tech Ecosystem
- Trusted Exchange Framework and Common Agreement (TEFCA)
- Rural Health Transformation Plan/Application
- Leveraging P3N Clinical Data for HR1 Community Engagement Requirement
- P3N Operations and Transparency
- Super Protected Data Filtering

PA eHealth Partnership Program Initiatives

Martin Ciccocioppo

Director

Pennsylvania eHealth Partnership Program

Office of Medical Assistance Programs

Pennsylvania Department of Human Services



Pennsylvania Patient and Provider Network (P3N)

Statewide Connections with five Certified Participating HIOs

- ClinicalConnect Health Information Exchange (Connected: November 2016)
- Central Pennsylvania Connect HIE administered by Penn Medicine Lancaster General Health (Connected: May 2019)
- HealthShare Exchange of Southeastern Pennsylvania (Connected: April 2016)
- Keystone Health Information Exchange (Connected: May 2016)
- Lehigh Valley Health Network (Connected: May 2022)

State Agency EHR Connections

- PA Department of Corrections (Connected: September 2019)
- OMHSAS State Hospitals' NetSmart EHR (Connected: August 2024)
- Office of Developmental Programs State Centers (Anticipated February 2026)

Interstate Connections

- Delaware Health Information Network (ADTs only: January 2022)
- CRISP Shared Services for Maryland, West Virginia, District of Columbia, Connecticut, Rhode Island, South Carolina, Alaska, and US Virgin Islands HIEs (ADTs only: August 2023)
- Ohio Health Information Partnership (ADTs only, Anticipated CY2026)

Accenture P3N Services

Core P3N Services

- **P3N Master Patient Identifier (Verato)**
- **Statewide Query and Retrieve**
- **Statewide and Interstate Alerting**

P3N Enhancements

- **Care Plan Registry**
 - Obstetrics Needs Assessment Form (ONAF)
- **Public Health Gateway**
 - PA Immunization Electronic Registry System (PIERS)
 - Electronic Lab Registry (ELR)
 - Prescription Drug Monitoring Program (PDMP)
 - Cancer Registry
- **Individual Access Services (Patient Portal)**
- **Provider Directory (<https://portal.p3nphg.org/public/providers>)**

Acute Care Hospitals Not Affiliated with a P3N HIO

BARNES-KASSON COUNTY HOSPITAL
BRADFORD REGIONAL MEDICAL CENTER
BUCKTAIL MEDICAL CENTER, THE
CHAN SOON-SHIONG MEDICAL CENTER AT
WINDBER
GEISINGER ST. LUKE'S HOSPITAL
LECOM HEALTH CORRY MEMORIAL HOSPITAL
LOWER BUCKS HOSPITAL
PENN HIGHLANDS BROOKVILLE
PENN HIGHLANDS CLEARFIELD
PENN HIGHLANDS CONNELLSVILLE
PENN HIGHLANDS DUBOIS
PENN HIGHLANDS ELK
PENN HIGHLANDS HUNTINGDON
PENN HIGHLANDS MON VALLEY
PENN HIGHLANDS TYRONE

REGIONAL HOSPITAL OF SCRANTON
ROXBOROUGH MEMORIAL HOSPITAL
SHARON REGIONAL
ST. LUKE'S HOSPITAL - ALLENTOWN CAMPUS
ST. LUKE'S HOSPITAL - ANDERSON CAMPUS
ST. LUKE'S HOSPITAL - BETHLEHEM CAMPUS
ST. LUKE'S HOSPITAL - CARBON CAMPUS
ST. LUKE'S HOSPITAL - EASTON CAMPUS
ST. LUKE'S HOSPITAL - GRAND VIEW CAMPUS (was
HSX)
ST. LUKE'S HOSPITAL - MINERS CAMPUS
ST. LUKE'S HOSPITAL - MONROE CAMPUS
ST. LUKE'S HOSPITAL - SACRED HEART CAMPUS
ST. LUKE'S HOSPITAL - UPPER BUCKS CAMPUS
SUBURBAN COMMUNITY HOSPITAL
WARREN GENERAL HOSPITAL
WILKES-BARRE GENERAL HOSPITAL

PA eHealth Partnership Projects

P3N Reprourement

- In contract execution phase
- Seamless transition to new P3N contract expected January 1, 2027

Department of Health

- Nearly 160 DOH disease investigators and Community Health Center nurses now have access to the P3N Provider Portal for treatment use cases
- Birth and Death Registries could be added to P3N Public Health Gateway
- Maryland PDMP to be added to PA PDMP PHG responses

P3N Enhancements

- Receiving/hosting Obstetric Needs Assessment Forms (ONAFs) to P3N – Need more Medicaid IDs
- Live with Enhanced ENS for ADT delivery to select HIO participants
- Continuing development of new dashboard for Office of Developmental Programs participants
- First county prison EHR is testing integration with a P3N HIO
- Expect to open P3N Patient Portal with Identity Access Management Solution in 2026

February 9, 2024 19

Beginning to parse P3N CCDs into FHIR to enhance P3N Patient Portal user experience



Rural Health Transformation Plan

The Department of Human Services is not currently accepting applications or proposals for the Rural Health Transformation Plan.

Please refer to dhs.pa.gov/ruralhealth for updates on the Rural Health Transformation Plan and to sign-up to receive updates.

Questions can be submitted using this [form](#). Once submitted, we will review your inquiry as soon as possible.

PA Navigate

- **Completed 45 integrations with Providers, Payers, and CBO EHRs and case management systems.**
- **Returned \$1,530,000 in ARPA funding to HIOs to support PA Navigate vendor platform.**
- **DHS completed a data sharing agreement with Findhelp to begin sharing MA and SNAP enrollment information with PA Navigate; working through implementation steps.**
- **PA Navigate now allows seekers to find CBO volunteer opportunities to help support HRI community engagement requirements for SNAP and MA.**

Strategic Plan Six-Month Review

Lisa McCutcheon

Project Manager

and

Patrick Weiss

Senior Data Analyst

Pennsylvania eHealth Partnership Program

Office of Medical Assistance Programs

Pennsylvania Department of Human Services



Strategic Plan Six-Month Review

The PA eHealth Partnership is six months into the second year of our Strategic plan. This plan has incorporated the Advisory boards' suggestion to use Specific, Measurable, Achievable, Relevant, and Time-bound (SMART) goals and objectives

During this Six-Month review, we will assess progress toward our objectives and review relevant data-driven metrics.

Six-Month Accomplishments - Goal 1

Enable ubiquitous, robust health data sharing while maintaining privacy and security.

- Neighborhood Acute Care Hospitals going Live:
 - Hospitals have an Emergency room and 10 Inpatient beds.
 - LVHN: LEHIGH VALLEY HOSPITAL - POCONO CREEK 1/26/2026, Hellertown 6/30/2026
 - WELLSPAN: Newberry (Feb), Shrewsbury (March), and Carlisle (April)
- ODP dashboard development continues due to work in the fall to develop a no-cost solution for uniquely identifying ODP clients in the P3N
- Requested P3N Patient Portal be one of the first citizen-facing applications for new Keystone Login
- Completed P3N contract negotiations
- Interoperability on Rural Health Initiatives
 - The Rural Health Transformation Program (RHTP) includes alignment with the CMS Health Tech Ecosystem
 - One HIO parent is successfully onboarded to TEFCA without impacting P3N connections
 - Facilitated industry discussion of the CMS 0057 Rule

Six-Month Accomplishments - Goal 2

Increase timely access to usable health and community information.

- Continued discussions to leverage PA Navigate to volunteer opportunities, record volunteer hours, and pay for MA In Lieu of services
- Automated ODP client listing to feed New ODP Dashboards
- PA Navigate
 - Completed grant-funded integrations
 - Extended the Resource and Referral grant Performance Period to give them more time to utilize grant funds
 - PA Navigate usage continues to grow at the provider level, so the physician can access PA Navigate when a Patient is receiving health-related services but presents a social need
- Fully executed data sharing agreement with Findhelp for sharing MA and SNAP enrollment information

Six-Month Accomplishments - Goal 3

Improve upon existing Pennsylvania Patient and Provider Network (P3N) services.

- ONAF Forms
 - Went live July 14, 2025
 - Hosted on the P3N
 - Available via patient query on the portal
- Applied to have the P3N portal accessible via the new IAMS project in their Non-Production environment; this is the first step toward providing citizen access
- ADT parsing errors are virtually eliminated; when errors arise, they are quickly identified and reported to HIOs for resolution
- Improved access to Lab Results in development.
 - Defined use case for sharing discrete lab data and identified a great deal of variability from one provider and lab system to another
 - Accenture will extract discrete lab data from shared documents to determine whether that data can be used across the P3N without painstaking mapping

Six-Month Accomplishments - Goal 4

Expand care coordination to improve quality and reduce health care costs.

- CCHIE is now sending ambulatory Observation ADTs to the P3N
- Ohio ADT Exchange is making forward progress.
 - Previously, they could not commit to deleting ADTS from PA after two weeks
 - After a recent upgrade, they can do this and want to start exchanging ADTs
 - While we may not complete this work during the SFY, we hope to have it through Legal and through the signing process by the end of March and begin onboarding in 2Q 2026
- The P3N HIE Management tools can extract ADT data and provide customizable tools for the user
 - We have initiated efforts with the DOH Epidemiologists to provide access to the tool
 - They want to explore opportunities to visualize data for specific diseases and allow drilling down to the facility and patient levels, with links to open records for case management
 - We have edited our DOH Data Sharing agreement and policy to submit to legal
- Encounter Notification Service (ENS) Change request, Phase 1, was implemented for CCHIE
- Provided New Access to P3N for the DOH Disease Investigators and Community Health Nurses

Six-Month Accomplishments - Goal 5

Increase closed-loop referrals for health-related social needs.

- Continued growth for Pa Navigate closed-loop referrals
- Hundreds of new program added to PA Navigate service directory
- Volunteer opportunities are now discoverable through PA Navigate

Six-Month Accomplishments - Goal 6

Expand our collaboration with commonwealth agencies.

- Continued working with PIERS & Envision to clear the high-volume error (intended system is unavailable) to improve access
- Azure Upgrade underway
- Added DOH Disease investigators and Community Health Nurses to P3N Provider Portal
- Started to transition license-based Tableau dashboards to the P3N Portal Dashboard
 - Currently, Tableau limits us to 20 licenses, all of which are in use between HIOs and the State
 - This transition will allow us to provide access to more Stakeholders, HIO, and State agencies without additional license costs

Six-Month Accomplishments - Goal 7

Advocate for sustainable HIO funding.

- Notice of Increased Funding for PA Navigate
- Rural Health Transformation Program grant:
 - \$193,294,054 awarded to Pennsylvania
 - PA Rural Health Transformation Plan includes leveraging existing interoperability services to better address rural health care services
- Provided Enhanced P3N Encounter Notification Services (ENS) to CCHIE
 - Improves completeness and quality of ADT reporting to health plan members
 - Plan to move from batch to real-time ADT alerting
- Reduced the cost of troubleshooting and resolving issues related to individual facilities not sending ADTs
 - Innovative use of the P3N ADT Dashboard export functionality
 - Identifies facilities not sending ADTs so issues can be identified and resolved quickly, saving time, expense, and Increasing data availability

Strategic Plan Metrics Jan 2026 – PA Hospital Coverage – Goal



PA Hospital Coverage	Target for 06/30/2026	07/01/2025 – 12/31/2025	Comments
Increase number of long-term care facilities participating in HIE by 2% per year	177	174	
Increase number of All hospitals connected to certified HIOs by 2% per year	170	167	Not including the updates in January 2026. LVHN Pocono Creek was added recently (168).
Increase number of Acute Care hospitals connected to certified HIOs by 2% per year	146	143	Anticipating 5 new community hospitals to open and be connected by June 30, 2026



Strategic Plan Metrics Jan 2026 – User Access – Goal 1 cont.

Below Target

On Target

Met or Exceeds Target

User Access	Target for 06/30/2026	07/01/2025 – 12/31/2025	Comments
Increase Total Logins by 5% per year	596	328	
Increase Unique Logins by 5% per year	51	26	
Increase Clinical Reads by 5% per year	596	328	
Increase number of PA eHealth website hits by 5% per year (Goal 1)	22,579	4,004	Switch from Google Analytics to Adobe Analytics in the last quarter of FY25. Both programs use different methodologies to calculate the web hits. The webmaster does not have any control over this, therefore we will be using the July 2025 web hits as the baseline for FY26 because we can articulate the websites we are counting. Previously, there was no definable, repeatable and measurable process for FY25.
Increase the number of reports accessed by P3N participants by 10% annually	10,361,754	5,427,396	



Strategic Plan Metrics Jan 2026 – Data Quality – Goal

Below Target

On Target

Met or Exceeds Target

Data Quality	Target for 06/30/2026	07/01/2025 – 12/31/2025	Comments
Increase operational efficiency by reducing XCA errors by 3% per year	864,971	110,553	
Increase operational efficiency by reducing ADT errors by 3% per year	4,129,682	2,215	ADT parsing error issue was resolved in the last quarter of FY25.
Reduce number of records with missing information by 3% per year	11,263,645	5,077,238	No site-level data is available; therefore we do not know which facilities to contact for correction.



Strategic Plan Metrics – Growth – Goals 4 through 6

Below Target

On Target

Met or Exceeds Target

Growth	Target for 06/30/2026	07/01/2025 – 12/31/2025	Comments
Increase interstate ADT sharing by 1 state per year	10	9	Talks with Ohio
Increase volume of ADTs sent from the P3N by 5% per year	93,390,565	48,837,581	
Increase the volume of messages traversing the Public Health Gateway by 5% per year	8,781,637	4,942,221	
Increase the number of registries participating in the Public Health Gateway by one per year	5	4	
Increase number of county prisons connected to certified HIOs by 2 per year	2	0	No county prisons connected
Increase the number of state programs accessing the P3N by 1 per year	5	5	Onboarding of DOH- Infectious Disease and Community Health Nurses



Strategic Plan Metrics Jan 2026 – PA Navigate – Goal 5 and 6

Below Target

On Target

Met or Exceeds Target

PA Navigate	Target for 06/30/2026	07/01/2025 – 12/31/2025	Comments
10% increase in number of closed-loop referrals in PA annually	2,471	2,546	Target met in 6 months.
Increase number of organizations integrated with Pa Navigate by 5% per year	25	43	Currently meeting target.
Increase number of PA county and local programs using PA Navigate by 5% per year	574	426	



PA NAVIGATE

linking patients to community resources

“State of the State”

Keith Cromwell, Central PA Connect HIE

February 6, 2026

Agenda

PA Navigate Overview

Major Successes

Challenges & Opportunities

DHS Continued Engagement

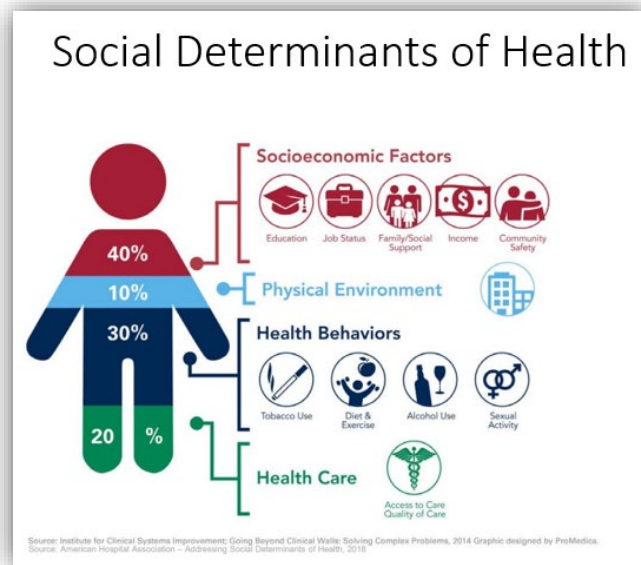
Next Steps & Future Vision

Discussion



What is PA Navigate?

A statewide community information network designed to address health and social care needs for Pennsylvanians by connecting them to community services.



GOALS



Build a statewide platform connecting patients to social services



Making SDOH/HRSN data as shareable as clinical data



Understanding citizens' needs and capacity to meet them



Help make Social Care sustainable



A DIVERSE NETWORK OF PARTNERS

From large health systems to payers to HIE's to grassroots CBO's, diverse partners all play a part of the success of the network





Major Successes

HIE Goals and Milestones

In DHS contract with HIEs:

- ✓ HIEs ran procurement, selected statewide platform vendor
- ✓ HIEs contracted/integrated with Findhelp
- ✓ HIEs contracted with 45 Member Orgs/CBOs for PA Navigate participation, contributing assessment & referral data
- ✓ Data sharing with P3N
- ✓ CBO engagement & incentive plan

Value-Add Achievements

- ✓ Leveraging HIE governance framework for SDOH data sharing
- ✓ Coding of referral and assessment data
- ✓ Exceeding privacy requirements for super-protected data
- ✓ Focusing CBO recruitment & incentives with member priorities
- ✓ HIE case studies: social care impact on utilization & outcomes
- ✓ Peer group meetings to build relationships between health and social care orgs

Member/CBO Integrations

Central PA Connect

Penn Medicine
Union Community Care
WellSpan
Family First
Homelessness Coalition
CAP Lancaster
Silverstein
TriCounty Community Action
United Disabilities Services
United Way of Lancaster/PA 211*

Clinical Connect HIE

Heritage Valley Health System
Indiana Regional Medical Center
UPMC Health Services
UPMC Health Plan
Community Care Behavioral Health
Tableland Services, Inc.
Volunteers of America of Pennsylvania

KeyHIE

Geisinger
Meadows Nursing & Rehabilitation
Sadler Health
Scranton Primary
The Wright Center

HealthShare Exchange

Aetna
AmeriHealth Caritas
Bucks Co Opportunity Council
ChesPenn
Community Behavioral Health
Health Fed of Phila
Education Plus Health
Esperanza
DVCH
Family Practice/Counseling Network*
Project HOME*
Public Health Management Corporation
Jefferson Health Plan
Jefferson Health

Lehigh Valley Health Network
Magellan HealthCare
Main Line Health System
MANNA
Merakey
Neighborhood Health Centers of Lehigh Valley
PA Health & Wellness
PerformCare
Spectrum Health
Tandigm Health
Temple Health
Trinity Health Mid-Atlantic
United HealthCare of PA

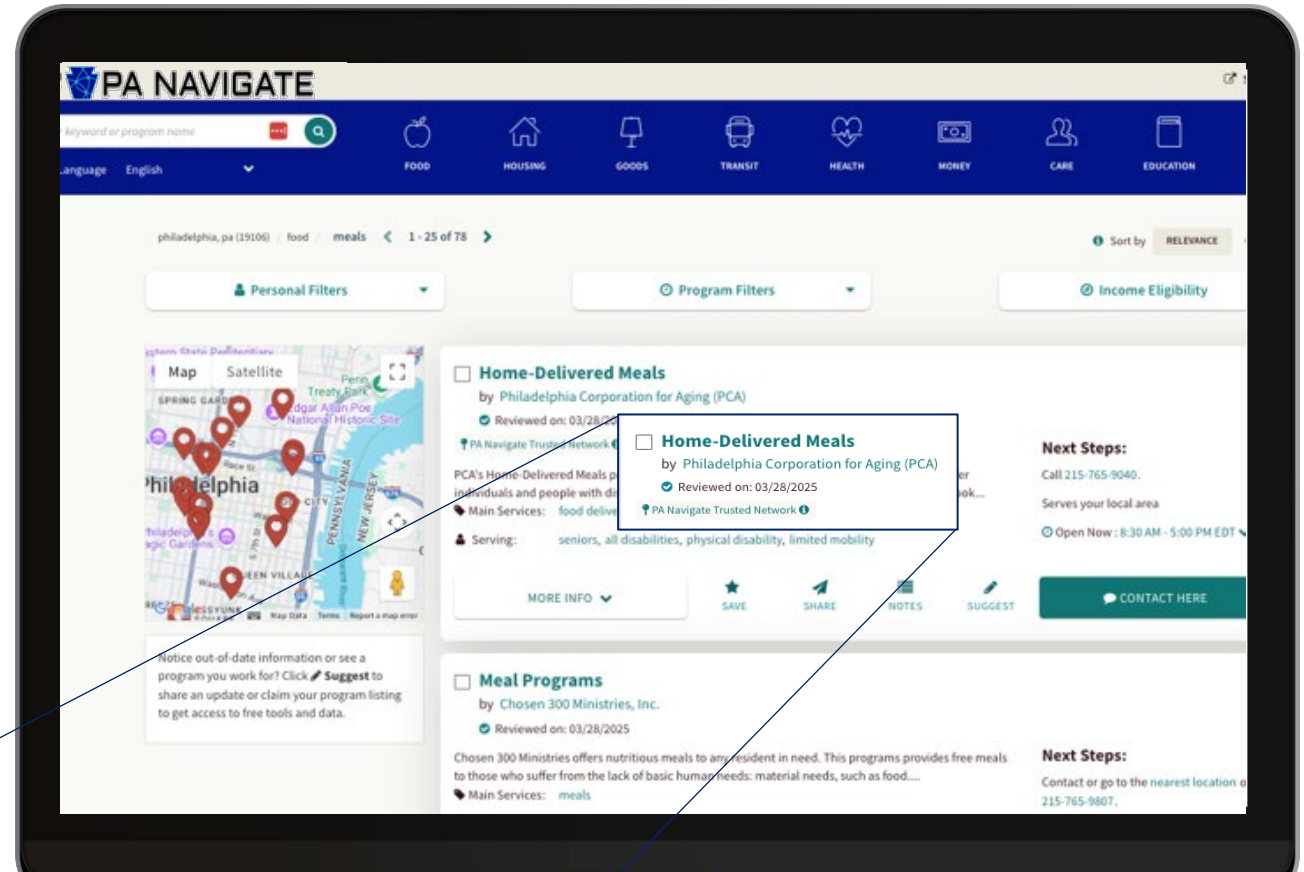
45 Member/CBO integrations complete

*3 In progress



Value to Member Orgs

- Support of HealthChoices contract requirements, value-based programs
- Some saving money by using PA Navigate natively as their referral platform
- Cultivating PA Navigate Trusted Network
 - CBO engagement & responsiveness
 - Incentive program
 - Elevating Trusted Network CBOs in search results
- Data sharing through Coalition Sharing



CBO Engagement Strategy

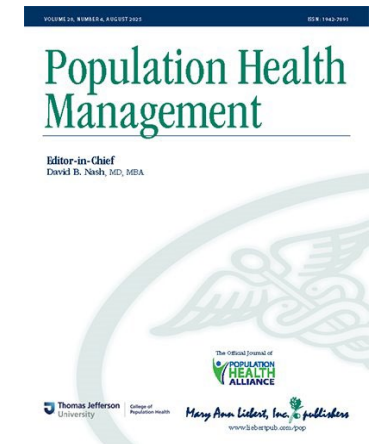
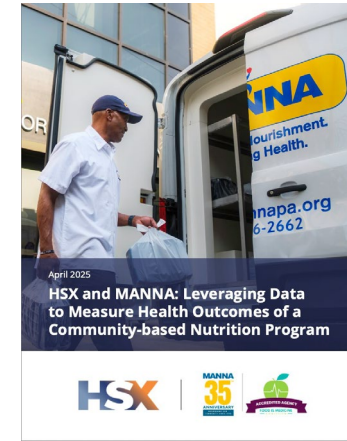


- ▶ **Relationship building**
 - Priority CBOs identified by HIO members
 - Elevation of Trusted Network CBOs among coalition partners
- ▶ **Infrastructure support**
 - Training and technical assistance provided by CAAP
 - ARPA and grant support for infrastructure build and integrations
 - Financial incentives to support engagement
- ▶ **Demonstrating value**
 - Promoting value of CBOs with high response/closed loop rates
 - Case studies revealing impact/ROI of social care on clinical utilization and health outcomes



Helping CBOs Demonstrate Impact

- Compared healthcare utilization one year before/after enrollment
- MANNA:
 - 20% decline in IP, 18% decline in ED visits.
 - 5% decline in A1c among pts with diabetes and 4% decline in BMI among obese pts
- Pathways:
 - 32% decline in ED visits
 - 5% increase in IP, but 8% drop in LOS

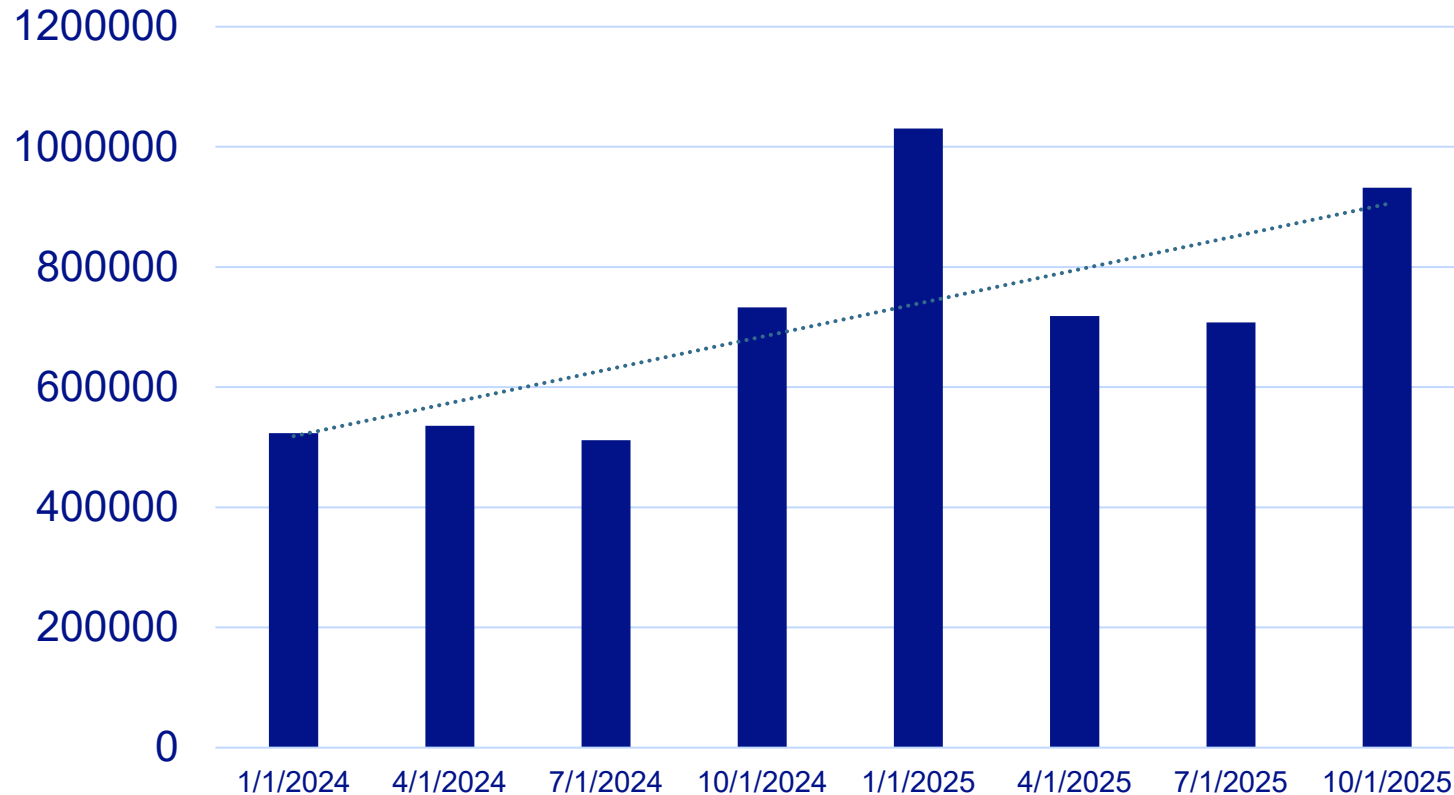


Increasing Utilization

Searches

(seeker or healthcare provider searching for assistance)

Searches



Based on total searches done in Pennsylvania 1/1/24 – 12/31/25 on PA-Navigate.org

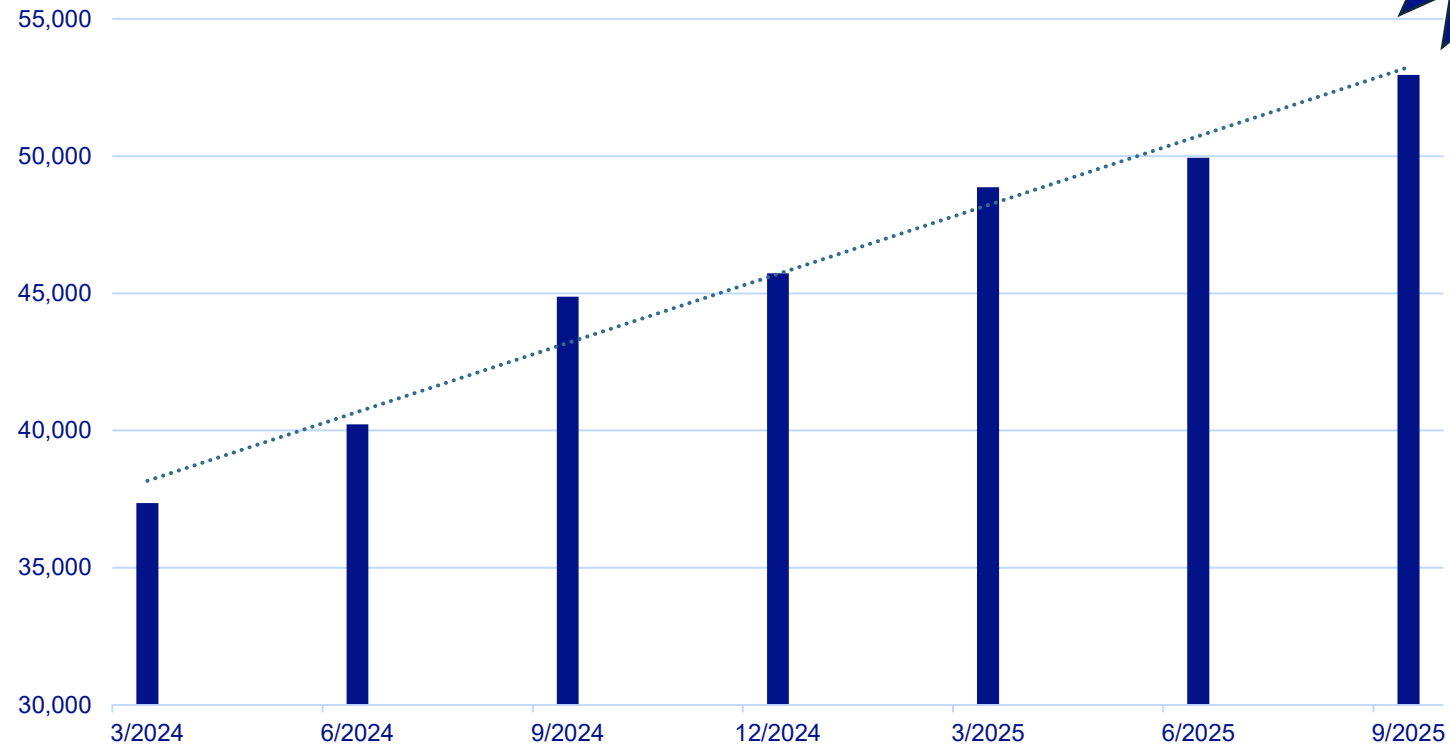


Increasing Utilization

Referral Activity

Total Referrals

42% Increase!



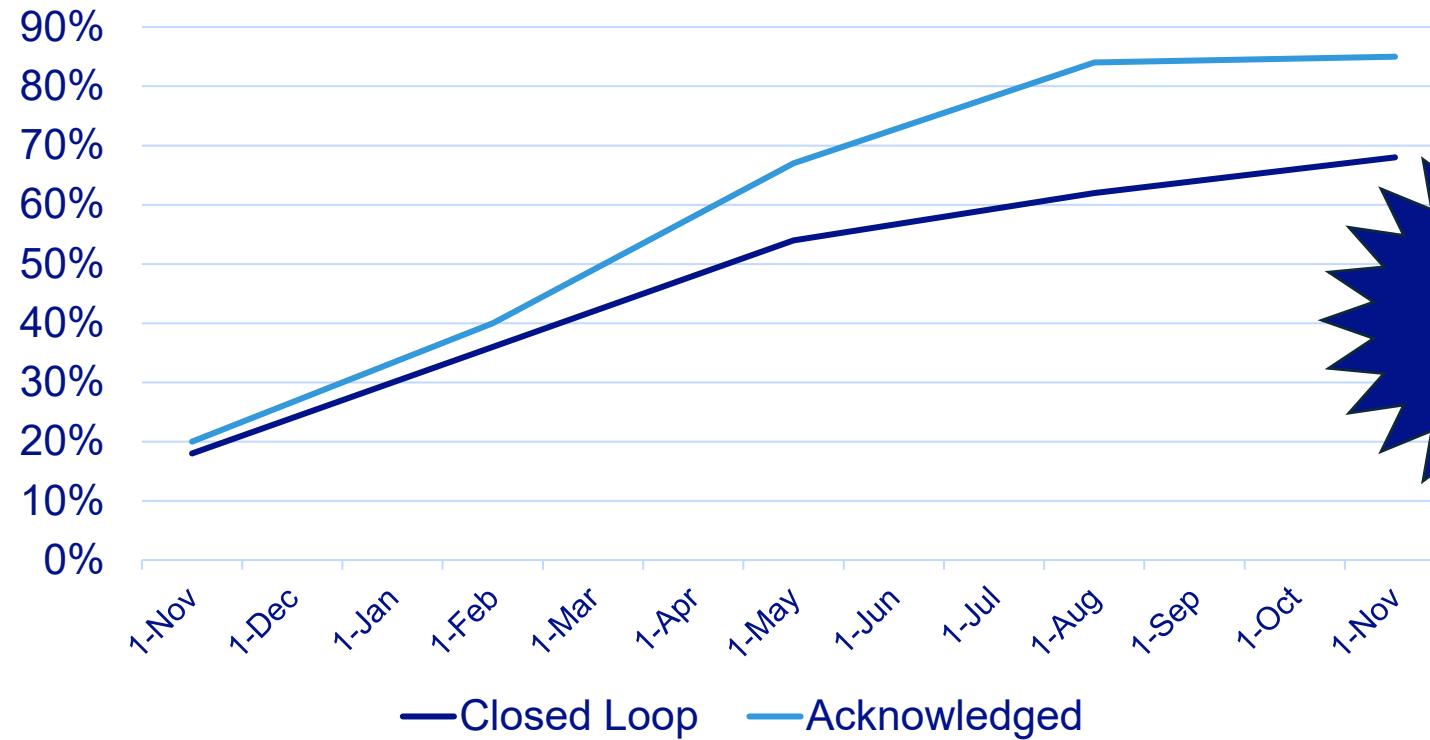
Based on total referrals place in Pennsylvania 1/1/24 – 9/30/25 on PA-Navigate.org



Increasing Responsiveness

Referral Activity

Closed Loop Referral Status



278% Increase!

Based on outcome of all referrals place in the PA Navigate Trusted Network 9/1/24 – 11/30/25 on PA-Navigate.org



Challenges/Opportunities

Adoption Hurdles

- Gaps in community-based organization (CBO) coverage
- Privacy concerns re: data sharing with CBOs
- Gaps in rural health systems and CBOs engaged

Data and Integration Challenges

- Assessments starting to come through EHRs
- Limited CBO system integration capabilities
- Data & reporting quality

CBO Capacity

- Small CBOs struggling with technology, staffing, or follow-up
- Federal funding cuts, state budget impasse

Sustainability

- Funding beyond initial grant
- Incentives for provider and payer participation
- Continued CBO Incentives



DHS Continued Engagement



Policy levers

- Requiring PA Navigate participation in Medicaid contracts (e.g., Maximus, service providers)
- Mandate state agencies participation in PA Navigate and support their contractors (e.g., Aging, Labor)



Operational levers

- Finalize data sharing agreement for Medicaid/SNAP enrollment/eligibility



Funding levers

- Use PA Navigate data to prioritize funding for critical CBOs (e.g., SNAP, food pantries, housing)
- Supporting payment for administrative and direct services under Keystones of Health
- Leverage Rural Health Transformation funding to support ongoing development of PA Navigate



Next Steps and Future Vision

Scaling: deepen / expand coverage and utilization across all counties

Use Navigate data to inform DHS policy and measure SDOH impact

Integration with DHS programs: aligning with maternal health, behavioral health, housing and employment initiatives

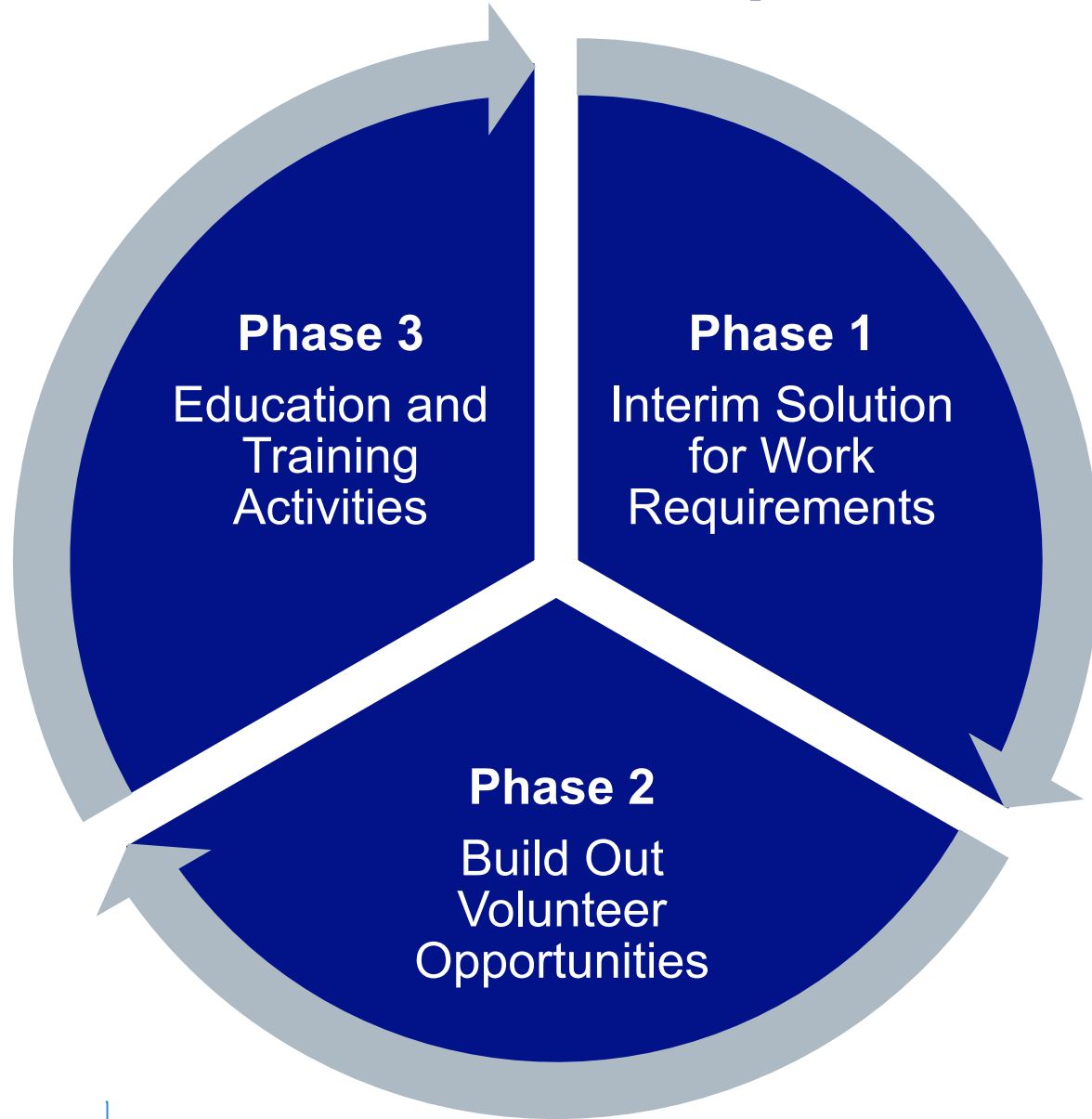
Sustainability strategy: blending state funding, payer contributions, and provider participation

Platform enhancements to support PA Navigate adoption, including technical & functionality improvements and the expansion of benefit eligibility checks via Uno eCheck

PA Navigate Medicaid Work Requirements expansion & automation



Medicaid Work Requirements



Phase 1 – PA Navigate is being used to provide an interim solution for Work Requirements

- Search for Volunteer Opportunities
- Adding a Service Tag to the platform and link for DHS info
- Community Action Association of PA (CAAP) to connect CBOs

Phase 2 – Build out of Volunteer Opportunities

- Automation of the entire process
- Addition of Screeners to ensure appropriate connections
- In place by September 2026

Phase 3 – Addition of Education and Training Activities





Discussion/Questions?



Who Can I Contact?

Central PA Connect

HEALTH INFORMATION | EXCHANGE

Keith Cromwell, Senior Program Director
keith@centralpaconnect.org
717-544-5269



Phyllis Szymanski, President
szymanski@clinicalconnecthie.com
412-628-0179

Laura Mosesso, Client Service Manager
Mosessol@clinicalconnecthie.com
412-855-0404



Marianne DeJesús, Senior Program Manager
marianne.dejesus@healthshareexchange.org
954-651-0907



Mary Honicker, IT Program Director
mhonicker@geisinger.edu
570-214-9438



2026 Advisory Board Meetings

- Friday, May 1, 2026, in-person at 2525 Seventh Street, Harrisburg, 10 a.m. – 2 p.m.
- Friday, August 7, 2026, in-person at 2525 Seventh Street, Harrisburg, 10 a.m. – 2 p.m.
- Friday, November 6, 2026, in-person at 2525 Seventh Street, Harrisburg, 10 a.m. – 2 p.m.

Public Comment

- Name of submitter for written comment submission acknowledged by chair
- Verbal comment (3 minutes per commenter)

Online Resources

PA eHealth further information:

[eHealth Partnership | Department of Human Services | Commonwealth of Pennsylvania](#)

PA eHealth Partnership Advisory Board:

[eHealth Advisory Board | Department of Human Services | Commonwealth of Pennsylvania](#)

PA Navigate:

<http://pa-navigate.org>