

Pennsylvania eHealth Partnership Advisory Board Meeting

February 7, 2025



**PA PATIENT &
PROVIDER NETWORK**
PRIVATE & PROTECTED



Pennsylvania
Department of Human Services

This Session is being Recorded

The Wiretap Act

It is against the law in Pennsylvania to record oral conversations without the permission of the individuals involved, in most circumstances.

Consent to Recording

This session is being recorded for record-keeping purposes. By participating in this session, you are consenting to the recording of this session for preparation of meeting minutes. At any time if you have a question or comment, feel free to place that in the chat, and we will respond to you as soon as possible. If you would like to ask your question or to comment verbally – please note that by doing so, you are consenting to the recording of your statements for preparation of meeting minutes.

Please Note: The Commonwealth does not approve of having Artificial Intelligence (AI) bots interacting with Commonwealth meetings.

Agenda

- 10 a.m. Welcome and Introductions
- 10:05 Minutes of November 1, 2024, Advisory Board Meeting
- 10:10 Health Information Exchange Trust Community Committee Updates
- 10:30 PA eHealth Partnership Program Initiatives
- 11:00 Debrief on P3N Master Patient Index (MPI) Quality Improvement Efforts
- 12 p.m. Networking Luncheon
- 12:30 PA eHealth Partnership Program Strategic Plan Metrics
- 1:00 PA NAVIGATE Project Implementation
- 1:20 New TEFCA Developments
- 1:45 New Business
- 1:50 Public Comment
- 2 p.m. Adjournment



Welcome and Introductions

Julie Korick

Underserved Representative

and

PA eHealth Advisory Board Vice Chair



PA eHealth Advisory Board

Ms. CAROLINE BEOHM, Policy Director, Pennsylvania Insurance Department
(Insurance Commissioner Designee)

Mr. MARTIN CICCOCIOPPO, Director, PA eHealth Partnership Program
Pennsylvania Department of Human Services (Secretary of DHS Designee)

Ms. PAMELA E. CLARKE, Senior Director, Quality, Health Promotion Council
(House Appointed HIO Representative)

Dr. ROBERT DANOFF, Director of Family Medicine Residency Program
Jefferson Health Northeast (Physician or Nurse Representative)

Mr. JOSEPH FISNE, Associate Chief Information Officer
Geisinger Health System (Senate Appointed HIO Representative)

Mr. SCOTT FRANK, former Chief Information Officer
Capital Blue Cross (Insurer Representative)

Ms. TERI L. HENNING, AVP Government Affairs
Aveanna Healthcare (Home Care or Hospice Representative)

To be replaced by Mia Haney, CEO
PA Homecare Association



PA eHealth Advisory Board continued

Ms. MUNEEZA IQBAL, Deputy Secretary for Health Resources and Services
Pennsylvania Department of Health (Secretary of Health Designee)

Ms. JULIE KORICK (Vice Chair), Director of Finance & Business Development
Pennsylvania Association of Community Health Centers (Underserved Representative)

Ms. MINTA LIVENGOOD, Vice Chair, ConSub of the MAAC
(Consumer Representative)

Prospective replacement: Nick Barbera, Sr. Manager,
SunStone Consulting

Mr. PAUL MCGUIRE (Chair), Chief Operating Officer, Carbondale Nursing Home
(Post-Acute Care Facility Representative)

Dr. MICHAEL A. SHEINBERG, Chief Medical Information Officer
Penn Medicine Lancaster General Health (House Appointed HIO Representative)

Mr. MARK VOLOVIC, VP & Chief Information Officer, Indiana Regional Medical Center and Punxsutawney Area Hospital (Hospital Representative)

Dr. MARGARETE ZALON, Professor Emeritus, Department of Nursing
The University of Scranton (Consumer Representative)

Ex Officio Members

Ms. PHYLLIS SZYMANSKI, President
ClinicalConnect HIE (Nominated as Senate HIO Appointee)

Mr. DON REED, Chief Operating Officer
HealthShare Exchange (Nominated as House HIO Appointee)



HIE Trust Community Committee Updates

Alice Vuong

Director of Technology

HealthShare Exchange



HIE Trust Community Committee

Chairperson:

- Mary Honicker, IT Program Director, External Customer Relations
Keystone Health Information Exchange (KeyHIE)

HIE Trust Community Committee Meeting Summaries:

- HIETCC Meeting Agenda, January 8, 2025
- HIETCC Meeting Minutes, December 4, 2024
- HIETCC Meeting Minutes, November 6, 2024
- HIETCC Meeting Minutes, October 2, 2024

Recent HIE Trust Community Committee Topics

- P3N Verato Master Patient Identifier Mismatch Issues
- P3N Performance Workgroup
- Consent Workgroup
- Strategic Plan Metrics
- Annual Certification Package Review
- PA NAVIGATE Implementation and Integration Efforts
- Admission Discharge Transfer (ADT) Message Sharing
- Trusted Exchange Framework and Common Agreement (TEFCA)
- P3N Operations and Transparency
- Cybersecurity Exercise
- HIETCC CY2025 Chairperson Election
- P3N Data Persistence Testing

PA eHealth Partnership Program Initiatives

Martin Ciccocioppo

Director

Pennsylvania eHealth Partnership Program

Office of Medical Assistance Programs

Pennsylvania Department of Human Services



Pennsylvania Patient and Provider Network (P3N)

Statewide Connections with five Certified Participating HIOs

- ClinicalConnect Health Information Exchange (Connected: November 316)
- Central Pennsylvania Connect HIE administered by Penn Medicine Lancaster General Health (Connected: May 2019)
- HealthShare Exchange of Southeastern Pennsylvania (Connected: April 2016)
- Keystone Health Information Exchange (Connected: May 2016)
- Lehigh Valley Health Network (Connected: May 2022)

State Agency EHR Connections

- PA Department of Corrections (Connected: September 2019)
- OMHSAS State Hospitals' NetSmart EHR (Connected: August 2024)
- Office of Developmental Programs State Centers (Anticipated Late-2025)

Interstate Connections

- Delaware Health Information Network (ADTs only: January 2022)
- CRISP Shared Services for Maryland, West Virginia, District of Columbia, Connecticut, and Alaska HIEs (ADTs only: August 2023)
- Ohio Health Information Partnership (ADTs only, Anticipated CY2025)

Updated P3N Certification Package

P3N Application for Participation

Version 5; Effective January 1, 2025

Appendix A: P3N Technical Requirements

Version 5; Effective January 1, 2025

P3N Policy 1: Terms and Definitions

Version 5; Effective January 1, 2025

P3N Policy 2: Documentation Change Management

Version 5; Effective January 1, 2025

P3N Policy 3: Certification Policy and Process

Version 5; Effective January 1, 2025

P3N Policy 4: User Management Policy

Version 5; Effective January 1, 2025

P3N Policy 5: Privacy Policy

Version 5; Effective January 1, 2025

P3N Policy 6: Auditing Policy

Version 5; Effective January 1, 2025

P3N Policy 7: Data and Privacy Breach Policy

Version 5; Effective January 1, 2025

P3N Policy 8: Reporting Policy

Version 5; Effective January 1, 2025

P3N Policy 9: HIETCC Participation Policy

Version 5; Effective January 1, 2025

P3N Policy 10: Security Policy

Version 5; Effective January 1, 2025

P3N Policy 11: Downtime Notification Policy

Version 5; Effective January 1, 2025

P3N Policy 12: Security Incident Response Policy

Version 5; Effective January 1, 2025

HIO Fee Model and Schedule

Effective March 2024



Acute Care Hospitals Not Affiliated with a P3N HIO

BARNES-KASSON COUNTY HOSPITAL
BRADFORD REGIONAL MEDICAL CENTER
BUCKTAIL MEDICAL CENTER, THE
CHAN SOON-SHIONG MEDICAL CENTER AT WINDBER
GEISINGER ST. LUKE'S HOSPITAL
LECOM HEALTH CORRY MEMORIAL HOSPITAL
LOWER BUCKS HOSPITAL
PENN HIGHLANDS BROOKVILLE
PENN HIGHLANDS CLEARFIELD
PENN HIGHLANDS CONNELLSVILLE
PENN HIGHLANDS DUBOIS
PENN HIGHLANDS ELK
PENN HIGHLANDS HUNTINGDON
PENN HIGHLANDS MON VALLEY
PENN HIGHLANDS TYRONE

REGIONAL HOSPITAL OF SCRANTON
ROXBOROUGH MEMORIAL HOSPITAL
ST. LUKE'S HOSPITAL - ALLENTOWN CAMPUS
ST. LUKE'S HOSPITAL - ANDERSON CAMPUS
ST. LUKE'S HOSPITAL - BETHLEHEM CAMPUS
ST. LUKE'S HOSPITAL - CARBON CAMPUS
ST. LUKE'S HOSPITAL - EASTON CAMPUS
ST. LUKE'S HOSPITAL - MINERS CAMPUS
ST. LUKE'S HOSPITAL - MONROE CAMPUS
ST. LUKE'S HOSPITAL - SACRED HEART CAMPUS
ST. LUKE'S HOSPITAL - UPPER BUCKS CAMPUS
SUBURBAN COMMUNITY HOSPITAL
WARREN GENERAL HOSPITAL
WILKES-BARRE GENERAL HOSPITAL



Cognosante P3N Services

Core P3N Services

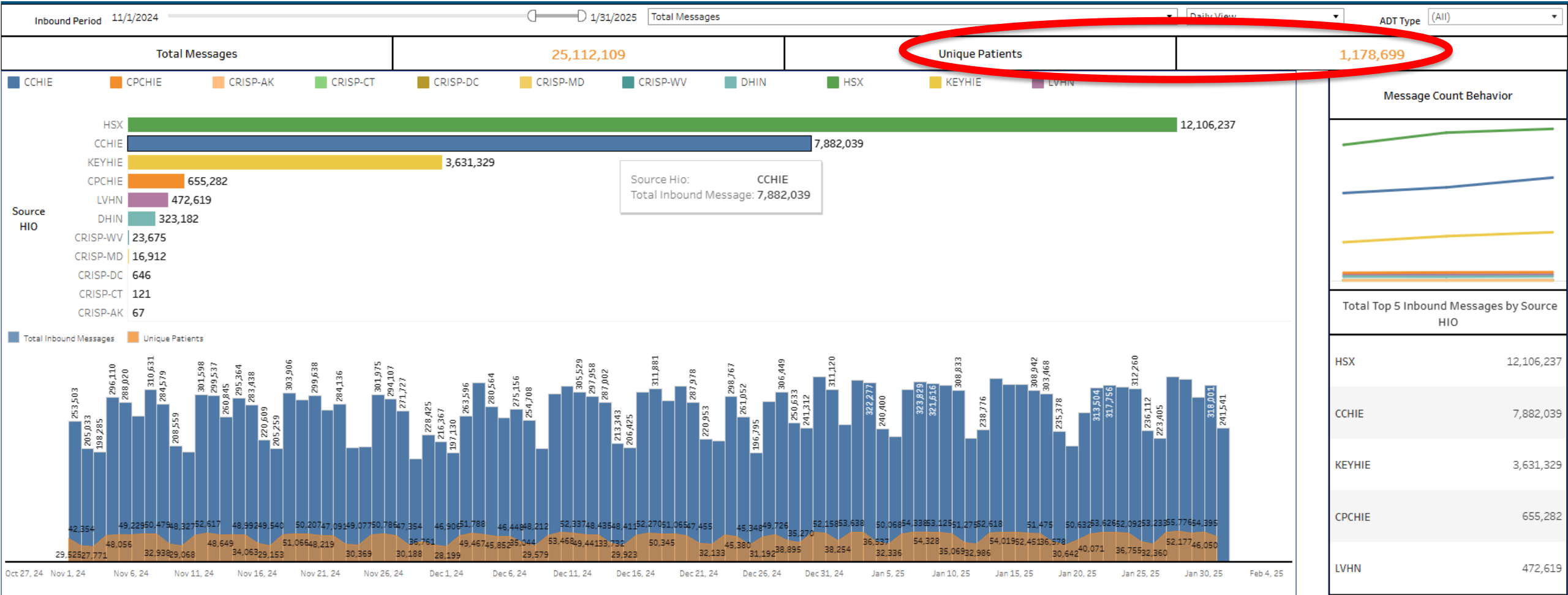
- **P3N Master Patient Identifier (Verato)**
- **Statewide Query and Retrieve**
- **Statewide and Interstate Alerting**

P3N Enhancements

- **Care Plan Registry**
 - Integrated Care Plan
 - OB Needs Assessment Form (ONAF)
 - Pediatric Shift Nursing Care Plans
 - Area Agency on Aging SAMS Care Plans
- **Public Health Gateway**
 - PA Immunization Electronic Registry System (PIERS)
 - Electronic Lab Registry (eLR)
 - Prescription Drug Monitoring Program (PDMP)
 - Cancer Registry
- **Individual Access Services (Patient Portal)**
- **Provider Directory (<https://portal.p3nphg.org/public/providers>)**



P3N Inbound ADTs and Unique Patients (Nov 2024-Jan 2025)

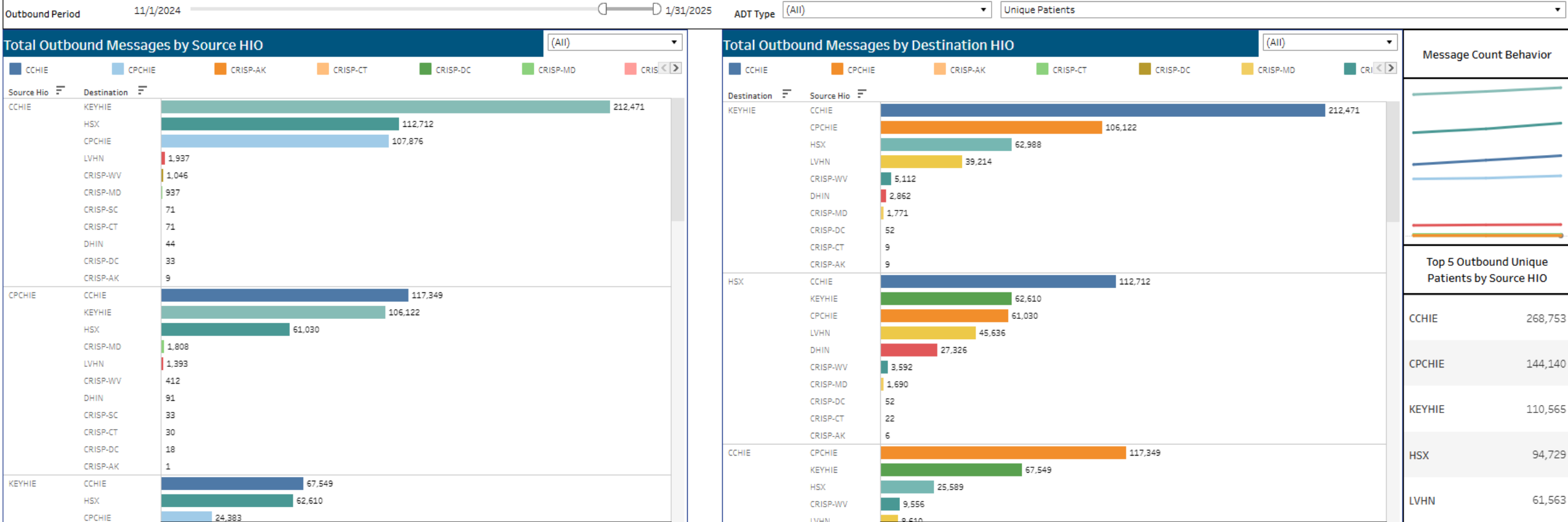


P3N ADT Service Unique Patients Sent (Nov 2024-Jan 2025)

Outbound Totals

Unique Patients Outbound Messages by Source HIO

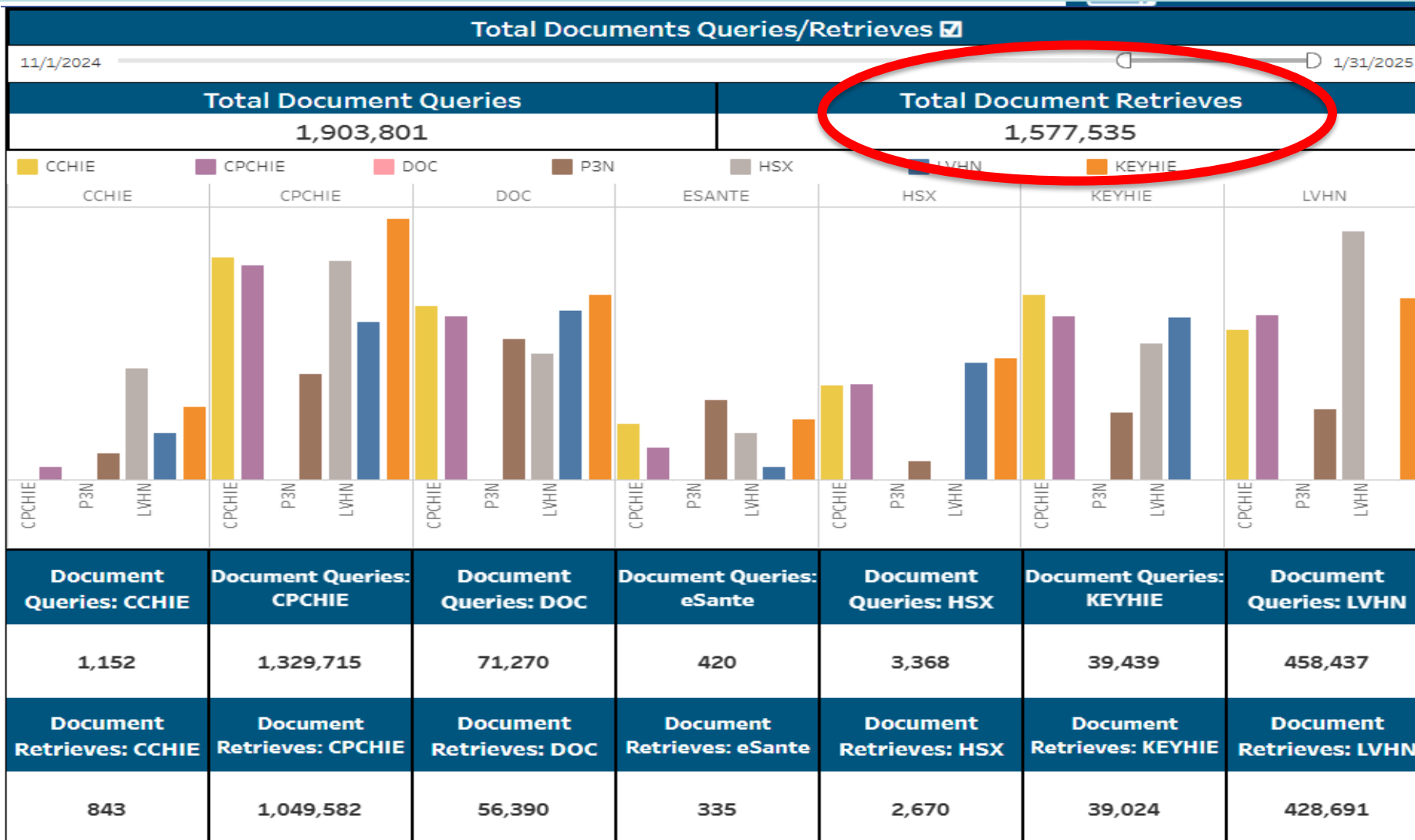
702,529



Note: Some P3N Outbound ADT Messages were purged between 12/24/2024-1/13/2025



P3N Interop Report (Nov 2024-Jan 2025)



Note: P3N Query and Retrieve Service was suspended 12/24/2024-1/21/2025
February 7, 2025



P3N Participant XCA Retrieve Timing Report (Jan 2025)

Overall Monthly Averages (seconds)

CCHIE	CPC	eSante	HSX	KEYHIE	LVHN
January	January	January	January	January	January
4.186	4.683	0.3173	5.634	15.80	1.382

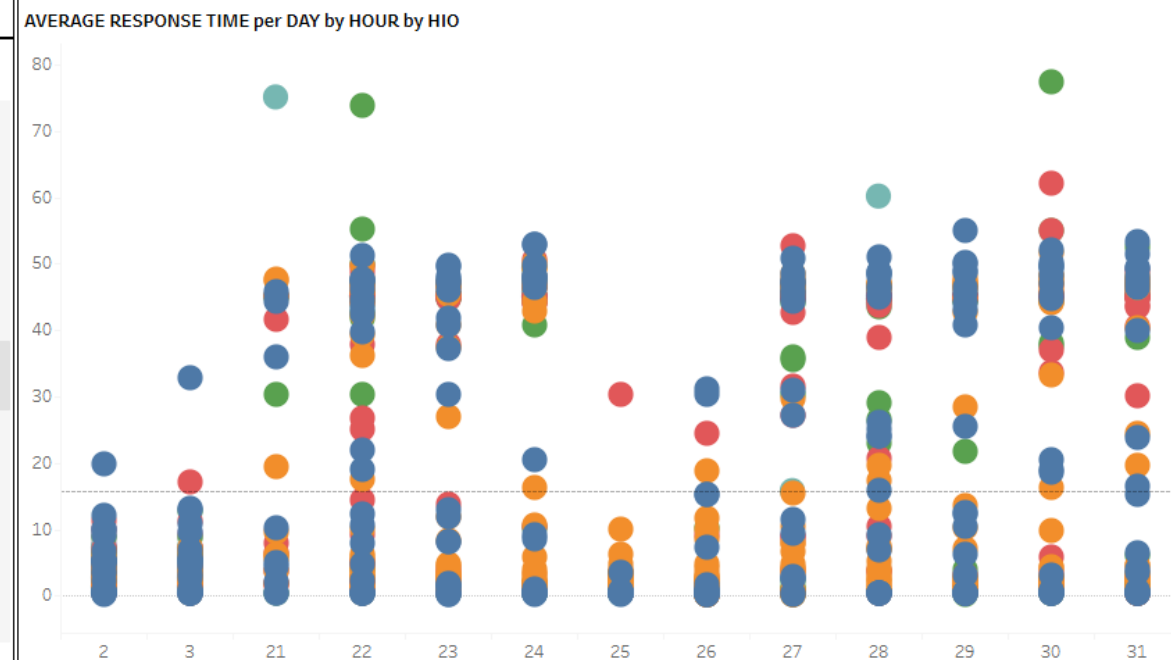
REQUESTING HIO

(All)

HOURLY	REQUESTING HIO	January 2, 2025	January 3, 2025	January 21, 2025	January 22, 2025	January 23, 2025	January 24, 2025	January 25, 2025	January 26, 2025	January 27, 2025
12	DOC	0.37	0.37		2.04				1.46	
	ESANTE	1.36	1.36					0.32		
	HSX	1.83	1.83					0.40		
	KEYHIE									
	LVHN	2.84	2.86							
	CCHIE	3.35	3.42		18.99	13.00	9.27	0.33		11.56
	CPCHIE	2.93	3.58		10.01	8.35	16.26	1.43	1.28	7.94
13	DOC	2.03	2.03		14.47		10.52			31.5
	HSX	1.17	1.17					0.36		1.35
	KEYHIE									
	LVHN	4.48	4.59							
	CCHIE	5.28	5.36		44.65	37.16	46.51	0.52	15.27	4
	CPCHIE	5.56	7.40		44.54	37.52	44.42	1.87	3.27	4
	DOC	1.34	1.34		44.21	37.95	44.20	0.39		4
14	ESANTE	0.48	0.48				45.08			
	HSX	6.23	1.51		41.88	45.11				
	KEYHIE									
	LVHN	6.97	7.05							
	CCHIE	6.66	6.80		47.69	48.11	48.17	0.71	0.81	4
	CPCHIE	4.07	5.74		46.06	46.64	47.47	2.16	4.11	4

RESPONDING HIO

KEYHIE



PA eHealth Partnership Projects

P3N Reprourement

- **Proposals were due on October 7, 2024**

Department of Health

- **Potential use of P3N for active disease investigation**
- **Potential use of P3N for patient treatment in Health Centers**
- **Potential DOH EHR Implementation with P3N integration**
- **Birth and Death Registries could be added to P3N Public Health Gateway**

P3N Enhancements

- **Will open P3N Patient Portal in 2025**
- **New audit functionality being added to eSante**
- **Enhanced Encounter Notification Service for ADT delivery to select HIO participants**
- **Developing new dashboard for Office of Developmental Programs participants**
- **Adding Obstetric Needs Assessment Forms to P3N**

1115 Waiver

- **Approved by CMS in late 2024**

PA eHealth Staff Retirements

Kay Shaffer

Kay has been a project manager helping to develop and manage statewide health information exchange since it was part of the Governor's Office of Health Care Reform in 2009. Kay plans to retire from Commonwealth service on March 7, 2025. She is leaving us in great shape, but she will be deeply missed.

Debra Kochel

Deb joined PA eHealth in September 2020 as a Human Services Program Specialist, after an extensive career across several state agencies. Deb plans to retire from Commonwealth service on April 11, 2025. Deb's support for P3N Operations and program oversight will be tough to replace.

Please join us in thanking these wonderful ladies for their service to the Commonwealth and in wishing them all the best of life in retirement

Debrief on P3N MPI Quality Improvement Efforts

Joel Lange

P3N Project Manager

Cognosante/Accenture

and

Lacey Mendoza

P3N Operations Manager

Cognosante/Accenture



P3N PA eHealth Advisory Board

P3N Master Patient Index (MPI) Quality Improvement Efforts

February 7, 2025

Timeline of Events

- December 17th – HIO-specific Linkage Reports were distributed to HIO's.
- December 23rd – PA eHealth team & Cognosante leadership met to discuss concerns raised by data source(s).
- December 24th – Verato, Cognosante, PA eHealth and P3N stakeholders met to review initial findings. Decision was made to halt ADT Forwarding & Query/Retrieve service.
- December 30th – Community met to review Frequency Analyzer and Large Patient reports.
- January 6th – Health Check findings were shared, identifying suspect patient identities. Reviewed 5-Point Plan...
- January 7th – ~28k suspect LinkID's were unlinked by Verato.
- January 9th – Data Source Identified system bug causing errant A40 merge messages to be sent to the P3N MPI.
- January 10th – Special HIETCC meeting was held. Decision was made to resume ADT Forwarding between 1/10 & 1/13.
- January 13th – Bug fix was put in place at Data Source to block errant merge messages.
- January 17th – Special HIETCC meeting was held. Decision was made to enable ADT Query/Retrieve service pending additional ~1.6k suspect LinkID's being unlinked by Verato.
- January 21st – Full ADT Query/Retrieve service was restored.

Root Cause Analysis

- Issues identified:
 1. Large Link Identities consisting of hundreds of individual source records merged and linked together.
 2. Merging of individual source records through merge transactions, and subsequent linking thereafter.
- Several factors compounded the situation:
 1. Bug identified at Data Source that sent A40 Patient Merge messages if the patients were marked as reviewed while working Potential Duplicates.
 2. Inconsistent policies among Data Sources for trauma patients, newborns, homeless, patients in the care of social services or the DOC, etc.

Critical: no loss of data, no known data breaches. No ADT's sent to ~28k suspect identities.

5-Point Plan

1. Perform Initial Health Check – **complete.**
2. Quarantine Likely Mismatched Patients or Unlink Mismatched Patients – **complete.**
3. Implement Prevention Methods to Improve Patient Matching
 - Prevent generic attribute values used in patient placeholder records from being scored upon and triggering match by adding them to Verato's default value configuration. – **complete.**
 - Performance Workgroup addressing universal MPI Data Quality Policies.
4. Develop and Implement HIO Participant Reports
 - Patient Merge reporting – **complete.**
 - Same-source Duplicate reports – **complete.**
 - Investigate Verato Secondary Overlay Process. – **complete.**
5. Implement Monitoring Methods for Future Mismatches
 - Monthly reporting on Large LinkID's.
 - Perform on-going quarterly Health Checks.

PA eHealth Partnership Program Strategic Plan Metrics

Lisa McCutcheon

Senior Data Analyst

Pennsylvania eHealth Partnership Program

Office of Medical Assistance Programs

Pennsylvania Department of Human Services



Strategic Plan Metrics – PA Hospital Coverage

PA Hospital Coverage	Baseline Jun 2024	Current Dec 2024	Target	Achieved?
Increase number of long-term care facilities participating in HIE by 2% per year (Goal 1 Objective A Metric 1)	173	174	176	No
Increase number of All hospitals connected to certified HIOs by 2% per year (Goal 1 Objective A Metric 2a)	161	165	164	Yes
Increase number of Acute Care hospitals connected to certified HIOs by 2% per year (Goal 1 Objective A Metric 2b)	142	146	145	Yes

Strategic Plan Metrics – User Access

User Access	Baseline Jun 2024	Current Dec 2024	Target	Achieved?
Increase Total Logins by 5% per year (Goal 1 Objective B Metric 1a)	17	131	18	Yes
Increase Unique Logins by 5% per year (Goal 1 Objective B Metric 1b)	4	25	4	Yes
Increase Clinical Reads by 5% per year (Goal 1 Objective B Metric 1c)	0	336	0	Yes
Increase number of Pa eHealth website hits by 5% per year (Goal 1 Objective B Metric 2)	652	12,667	685	Yes
Increase the number of reports accessed by P3N participants by 10% annually (Goal 4 Objective C Metric 1)	13,684,111*	5,022,201*	15,052,522	No

* Numbers are accumulative by SFY



Strategic Plan Metrics – PA Navigate

PA Navigate	Baseline Jun 2024	Current Dec 2024	Target	Achieved?
10% increase in number of closed-loop referrals in PA annually (Goal 5 Objective A Metric 1)	37	119	41	Yes
Increase number of organizations integrated with Pa Navigate by 5% per year (Goal 2 Objective C Metric 1)	0	11	4	Yes
Increase number of PA county and local programs using PA Navigate by 5% per year (Goal 6 Objective C Metric 2)	195	352	205	Yes



Strategic Plan Metrics – Data Quality

Data Quality	Baseline Jun 2024	Current Dec 2024	Target	Achieved?
Increase operational efficiency by reducing XCA errors by 3% per year (Goal 3 Objective B Metric 1a)	69,672	100,105*	67,582	No
Increase operational efficiency by reducing ADT errors by x% per year (Goal 3 Objective B Metric 1b)	604,646	598,992	586,507	No
Reduce number of records with missing information by 3% per year (Goal 3 Objective B Metric 2)	901,154	860,027	874,119	No

* KeyHIE is meeting weekly with Cognosante and Orion to improve and HSX is migrating to a new platform.



Strategic Plan Metrics – Growth

Growth	Baseline Jun 2024	Current Dec 2024	Target	Achieved?
Increase inter-state ADT sharing by 1 state per year (Goal 4 Objective A Metric 1)	6	8	7	Yes
Increase volume of ADTs sent from the P3N by 5% per year (Goal 4 Objective A Metric 2)	62,270,222*	35,452,799*	65,383,733	No
Increase the volume of messages traversing the public health gateway by 5% per year (Goal 6 Objective A Metric 1)	5,108,700	5,022,201	5,364,135	Yes
Increase the number of registries participating in the public health gateway by one per year (Goal 6 Objective A Metric 2)	4	4	5	No
Increase number of county prisons connected to certified HIOs by 2 per year (Goal 6 Objective C Metric 1)	0	0	2	No
Increase the number of state programs accessing the P3N by 1 per year (Goal 6 Objective B Metric 1)	2	3	3	Yes

* Numbers are accumulative by SFY



Strategic Plan Metrics – Date Driven

Date Driven Metrics due in SFY 2025	Target Date	Date Completed	Achieved?
Create ADT surveillance system for support of abuse and neglect in CY2024 (Goal 4 Objective B Metric 1a)	31-Dec-24		No
Integrate P3N with state EHRs (OMHSAS) by CY2024 (Goal 6 Objective B Metric 3a)	31-Dec-24	07-Aug-24	Yes
Hosting ONAF forms in P3N clinical data repository by end of CY2024 (Goal 3 Objective A Metric 1)	31-Dec-24		No
Enhance the P3N ADT service to meet HIO needs for alerts and notifications by CY 2024 (Goal 4 Objective C Metric 1)	31-Dec-24		No
Investigate possibility of paying for MA in lieu of services through PA Navigate in SFY 2024/2025 (Goal 7 Objective B Metric 1)	30-Jun-25		No

PA NAVIGATE Project Implementation

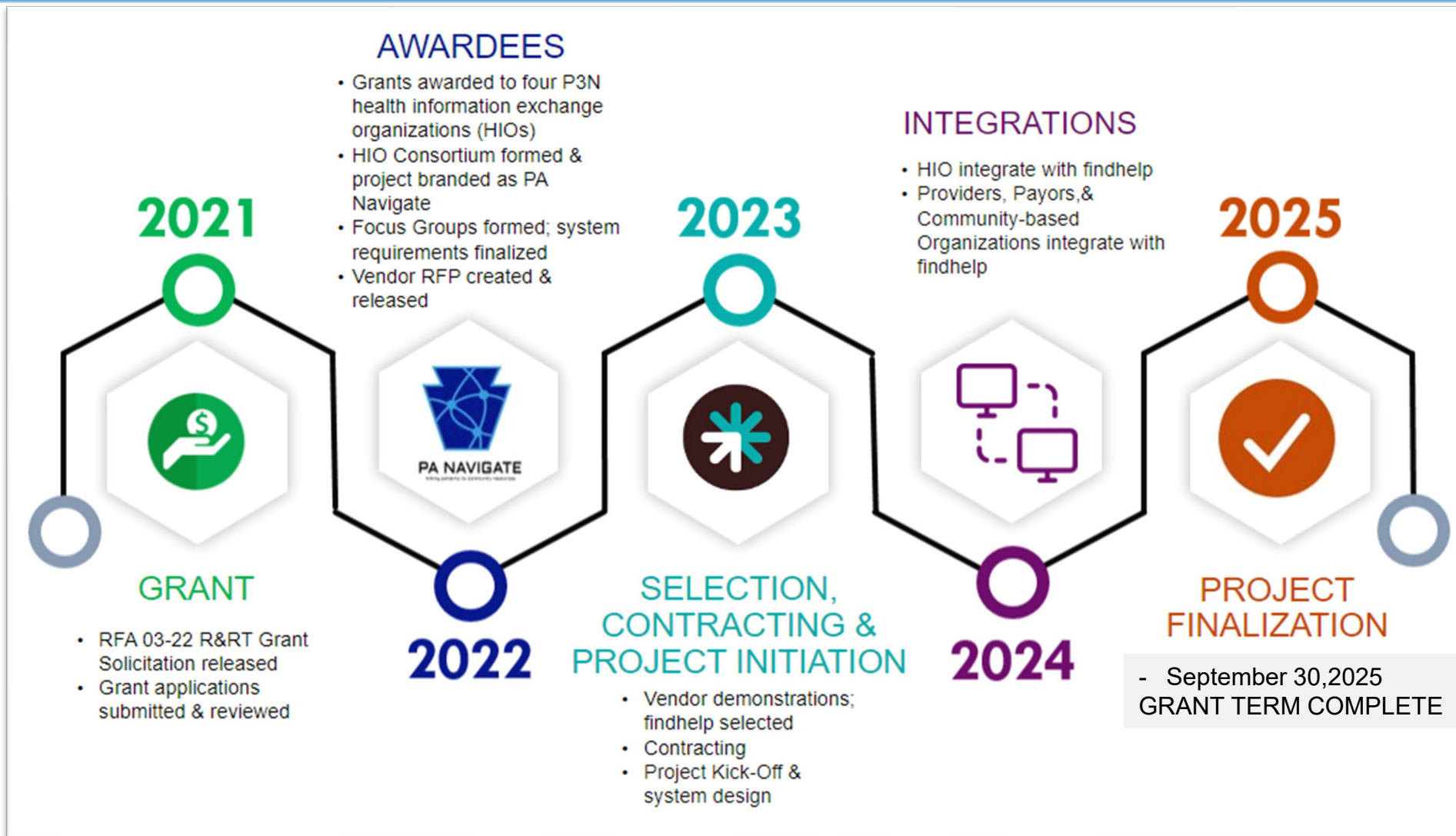
Keith Cromwell

HIE Program Director

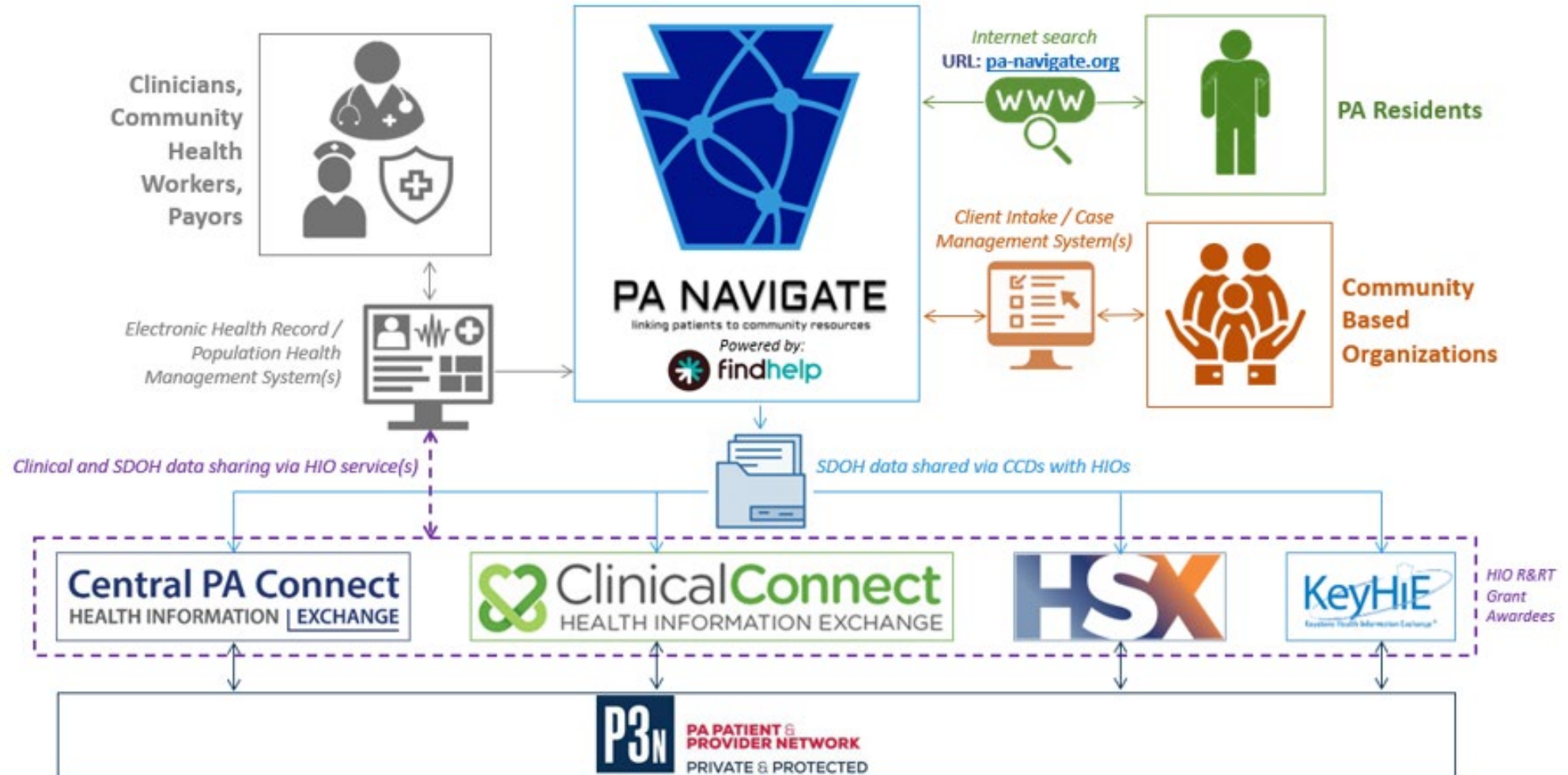
Penn Medicine Lancaster General Hospital



PA Navigate Grant Timeline



PA Navigate Participants & Data Flow



PA Navigate Landing Page

https://pa-navigate.org

PA NAVIGATE

Support Sign Up Log In

Free or reduced-cost help starts here!

PA Navigate connects Pennsylvanians with health and social care services in their local community.

Find help now with food, housing, utilities, transportation and more by entering your:

ZIP

15108

Search



If you or someone you know is in crisis, call or text 988 to reach the [Suicide and Crisis Lifeline](#), chat with them online via their website, or text HOME to 741741 (multiple languages available). If this is an emergency, call 911.

Organizations who need help with participating

Non-Profits and Community Based Organizations: Visit www.PANavigateHelp.org to get started and learn more and connect with a community engagement manager.

Healthcare Organizations: Interested in participating in PA Navigate? Contact your respective Health Information Organization (HIO) to discuss options for participation. If you don't know your local HIO, contact us at info@pa-navigate.org for more information.

About PA Navigate

PA Navigate is a statewide network that connect people in Pennsylvania with the health and social care services they need. It's designed to help Pennsylvanians access community resources more easily.

Are you a CBO on PA
Navigate?

Are you a Community Based Organization or nonprofit
that would like more information about the PA
Navigate network? [Click here to learn more](#)

VISIT PANAVIGATEHELP.ORG

PA Navigate Programs by Category (CY 2024)

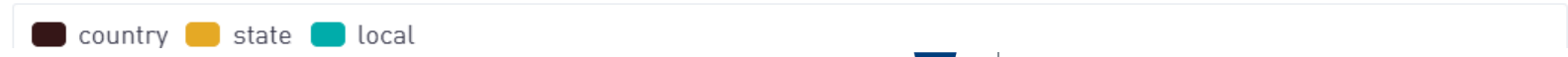
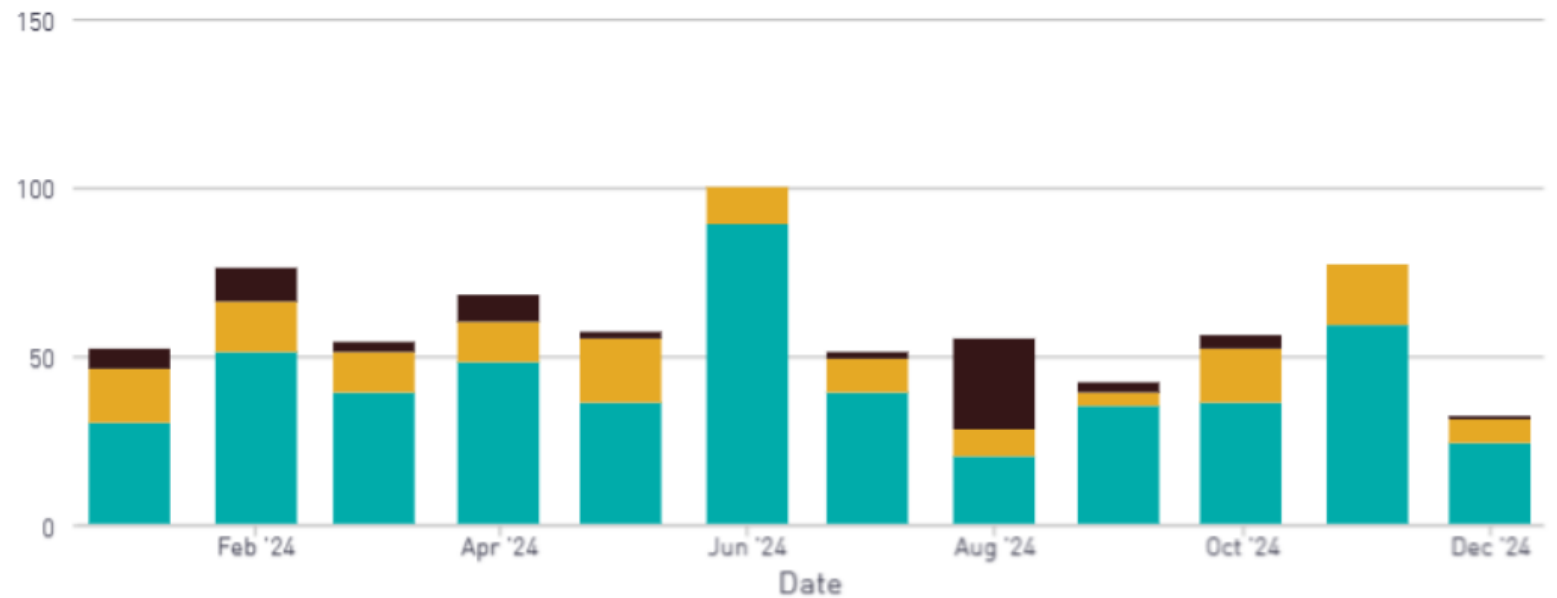
COVERAGE	ORGANIZATIONS	PROGRAMS	FOOD	HOUSING	GOODS	TRANSIT	HEALTH	MONEY	CARE	EDUCATION	WORK	LEGAL
country	730	907	30	49	67	27	426	349	529	303	53	88
state	1,072	1,292	41	80	138	58	637	488	743	364	88	107
local	5,028	9,159	2,060	1,489	875	393	4,078	1,516	5,046	2,728	763	559
	6,830	11,358	2,131	1,618	1,080	478	5,141	2,353	6,318	3,395	904	754

①

720

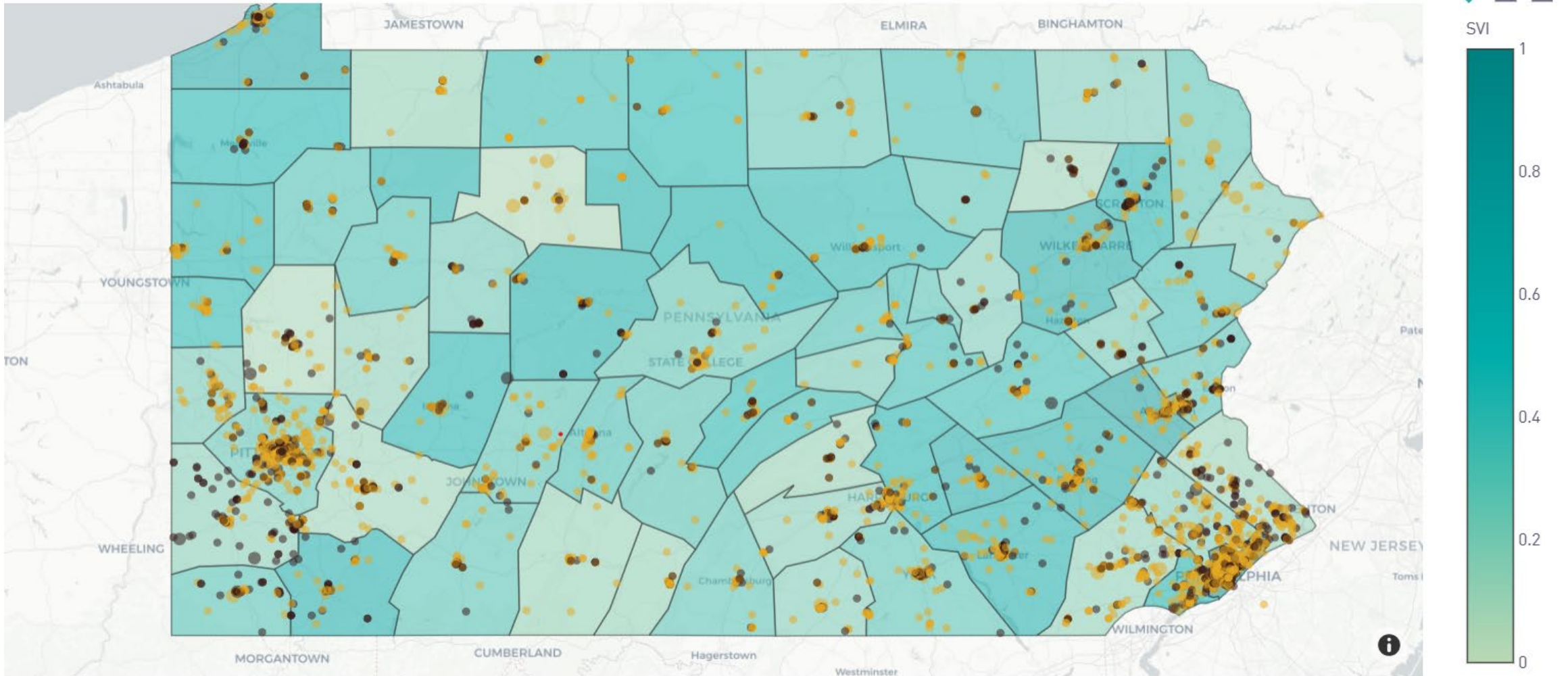
Programs Added | 2024-01-01 to 2024-12-31

① Programs Added | 2024-01-01 to 2024-12-31



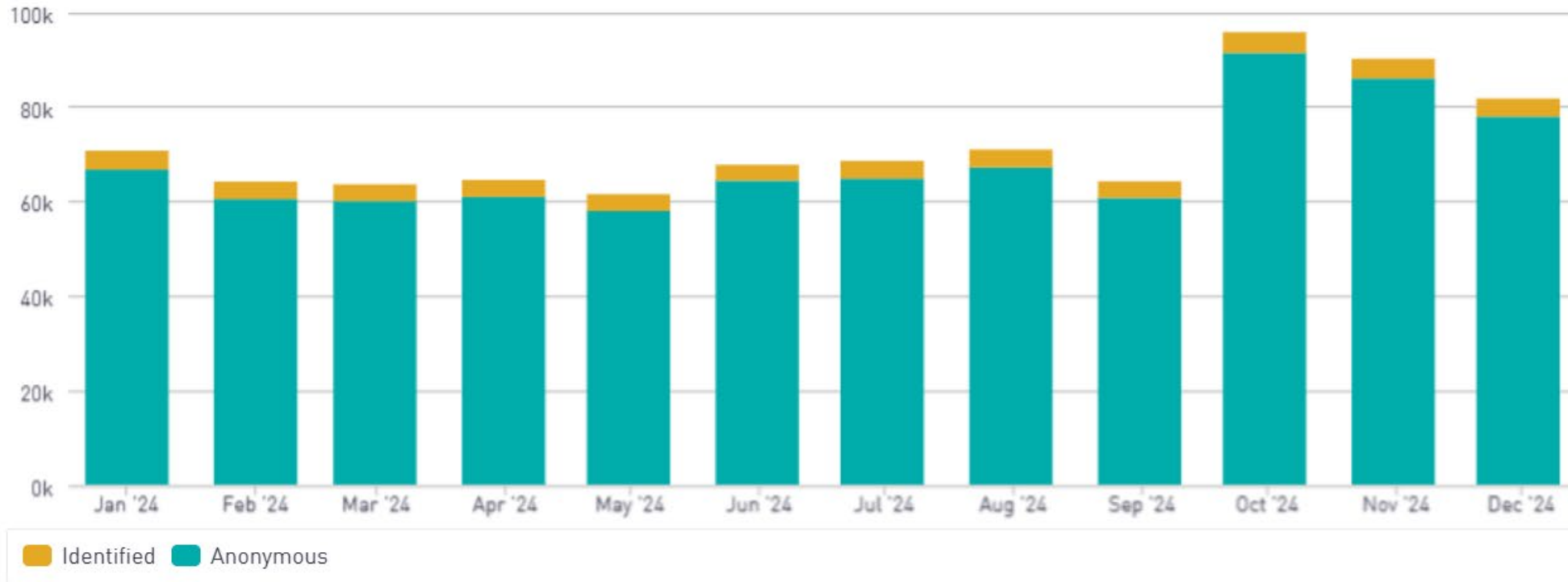
PA Navigate CBO Network (Dec 2024)

Office Locations



PA Navigate Users (CY 2024)

Users | 2024-01-01 to 2024-12-31



①

22,462

Distinct Identified Users

①

746,039

Distinct Anonymous Users



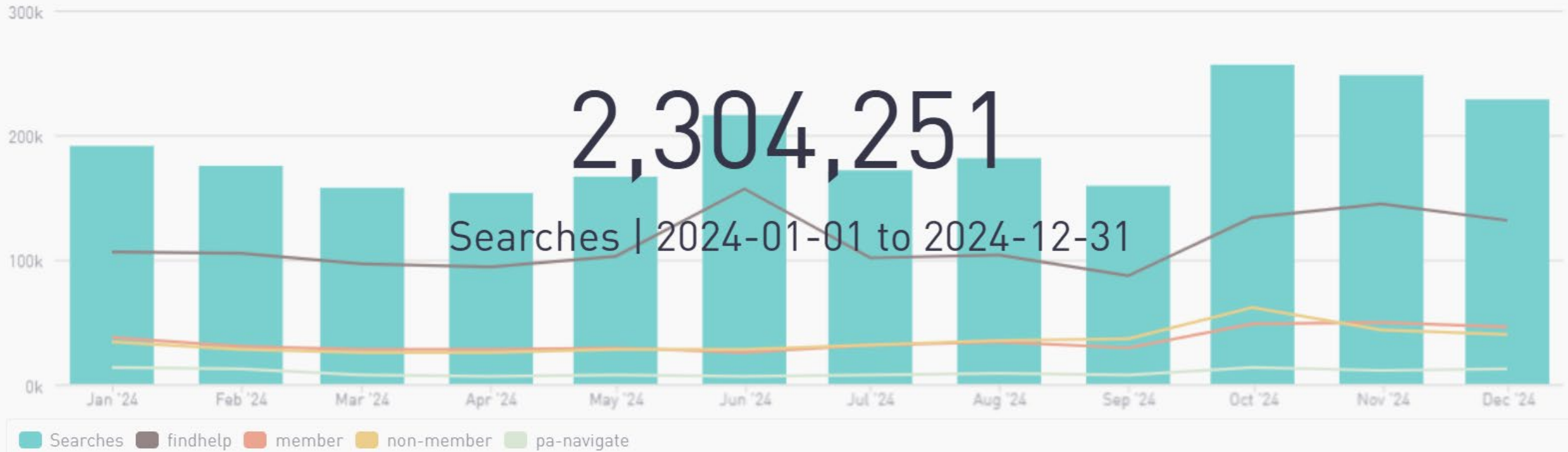
PA Navigate Sessions (CY 2024)

Sessions | 2024-01-01 to 2024-12-31



PA Navigate Searches (CY 2024)

① Searches | 2024-01-01 to 2024-12-31



PA Navigate Search Terms (CY 2024)

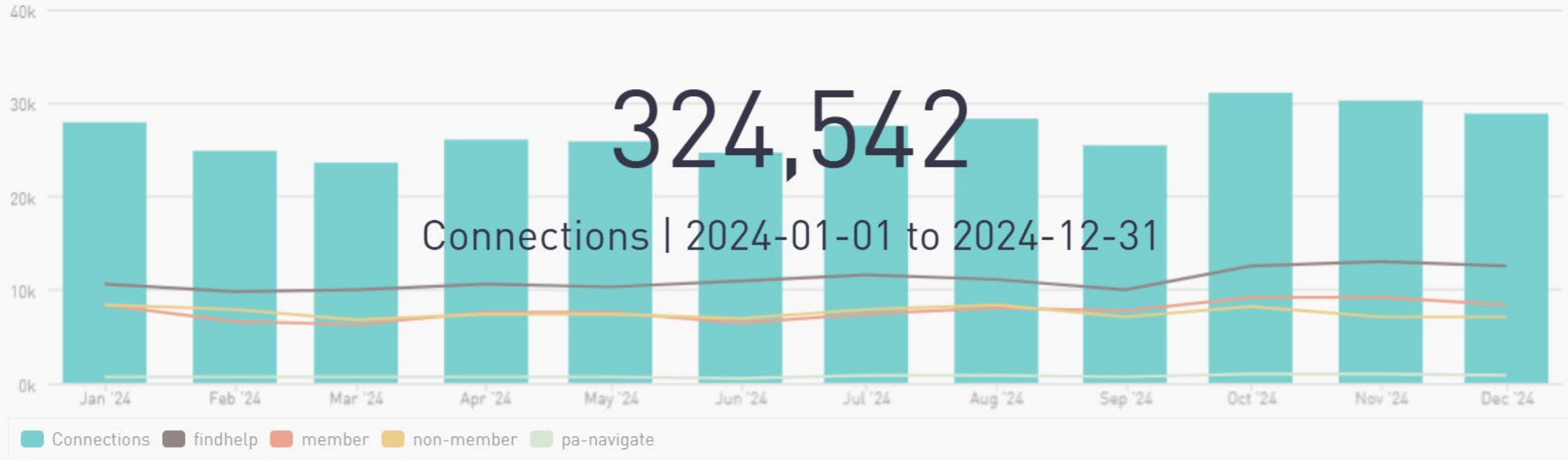
① Most Common Search Terms on My Site(s) | 2024-01-01 to 2024-12-31

TERM	DOMAIN	PERCENTAGE
food pantry	food	6.93%
help pay for housing	housing	5.65%
help pay for utilities	housing	4.79%
help find housing	housing	4.58%
emergency food	food	2.76%
food delivery	food	2.47%
transportation for healthcare	transit	2.09%
housing vouchers	housing	1.91%
temporary shelter	housing	1.78%
transportation	transit	1.49%
help pay for food	food	1.41%
help pay for car	money	1.37%
bus passes	transit	1.34%
meals	food	1.24%
help pay for gas	transit	1.19%



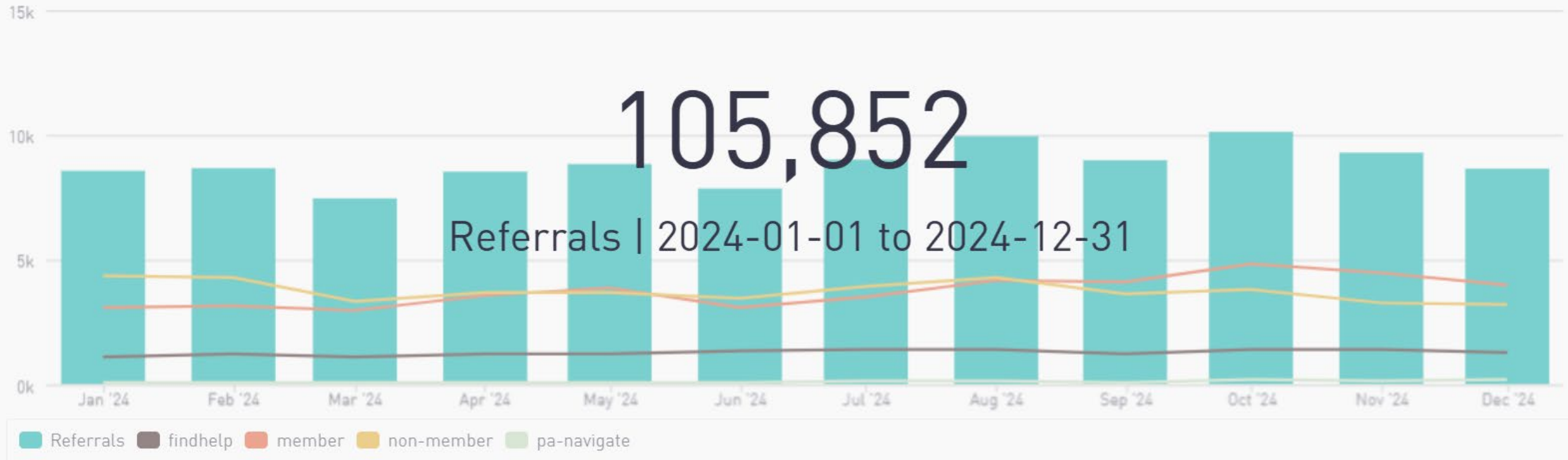
PA Navigate Connections (CY 2024)

① Connections | 2024-01-01 to 2024-12-31



PA Navigate Referrals (CY 2024)

Referrals | 2024-01-01 to 2024-12-31



PA Navigate Users Funnel (CY 2024)

① Users Funnel | 2024-01-01 to 2024-12-31



New TEFCA Developments

Martin Ciccocioppo

Director

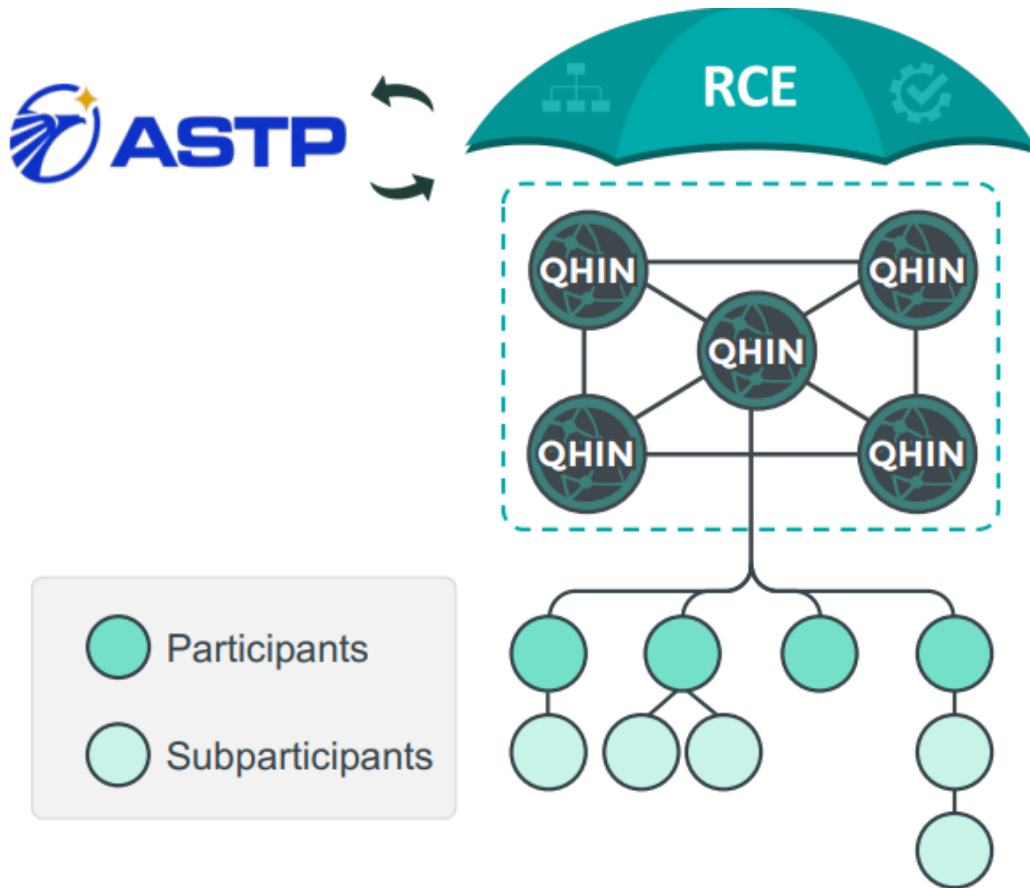
Pennsylvania eHealth Partnership Program

Office of Medical Assistance Programs

Pennsylvania Department of Human Services



Exchange Under TEFCA



ASTP defines overall policy and certain governance requirements

RCE provides oversight and governing approach for QHINs

QHINs connect directly to each other to facilitate nationwide interoperability

Each QHIN connects Participants, which connect Subparticipants

Participants and Subparticipants connect to each other through TEFCA Exchange

- Participants contract directly with a QHIN and may choose to also provide connectivity to others (Subparticipants), creating an expanded network of networks
- Participants and Subparticipants sign the same Terms of Participation and can generally participate in TEFCA Exchange in the same manner

Framework Agreements

Framework Agreements and TEFCA connections

Common Agreement

Each QHIN voluntarily enters into the same contractual agreement with the RCE by signing the Common Agreement

Participant/Subparticipant Terms of Participation

All Participants and Subparticipants voluntarily agree to the Terms of Participation without modification as part of their agreements with their TEFCA connector

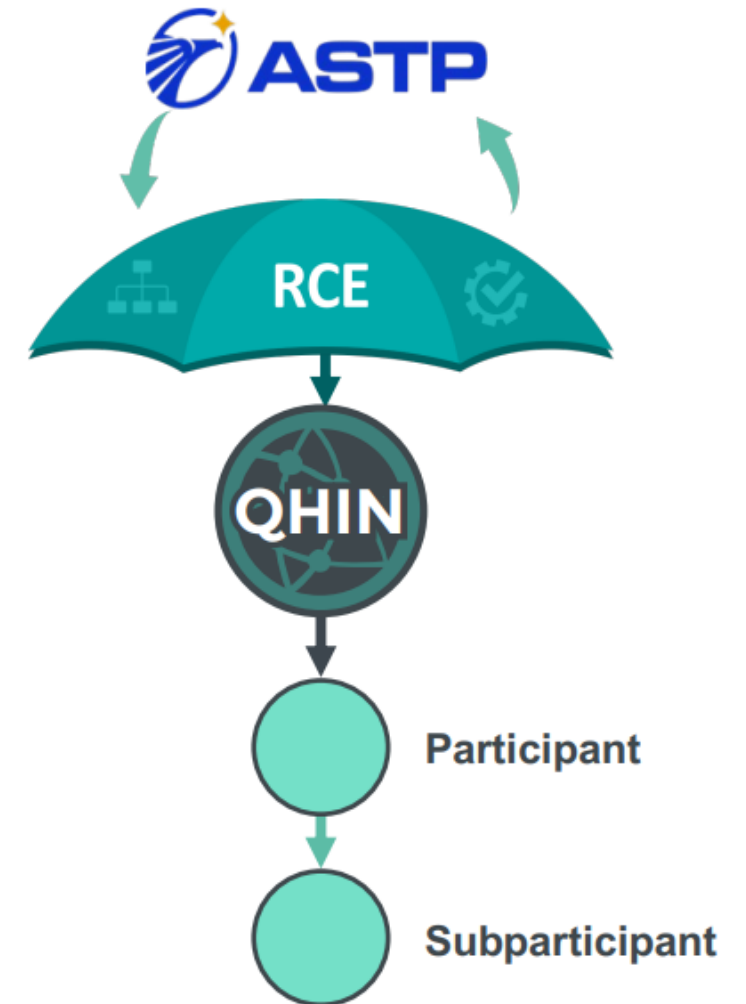
TEFCA connector

A QHIN, Participant, or Subparticipant that offers services to connect into TEFCA exchange

TEFCA connected entity

A QHIN, Participant, or Subparticipant that has signed a Framework Agreement

Entities may connect into exchange at any level



TEFCA QHINs



Chilling Effect of TEFCA on HIE in Pennsylvania

TEFCA is like a national version of the federated health information exchange ecosystem we have in Pennsylvania.

In Pennsylvania we have a very robust federated statewide health information exchange (i.e., Verato referential MPI, two-way access to public health registries, query and retrieve, Admission Discharge Transfer (ADT) message alerting service, care plan registry, and patient portal) that we call the Pennsylvania Patient and Provider Network (P3N) with a newly integrated statewide closed-loop referral system for addressing health-related social needs (HRSN) that we call PA Navigate.

Our participants include: Department of Human Services, which hosts the P3N; five P3N-certified health information organizations (HIOs); Department of Health, which hosts several state registries (i.e., PIERS, PDMP, eLR, cancer) our participants access through the P3N; Department of Corrections and State Hospitals, which have P3N-integrated EHRs; and neighboring state HIEs for ADT sharing.

TEFCA became operational in the last year with a very limited query and retrieve use case. Since health care provider EHRs can only be connected to a single TEFCA Qualified Health Information Network (QHIN), and several EHR vendors and national HIEs are now Designated QHINs or Candidate QHINs, TEFCA participation growth in Pennsylvania is a threat to our much more robust health information exchange in Pennsylvania.

Chilling Effect of TEFCA on HIE in Pennsylvania continued

At this time, all P3N-Certified HIOs have opted out of the National eHealth Exchange (eHX) QHIN and have opted out of the Epic QHIN, because so many of their provider members use EHR vendors that are, or are becoming, designated HIO. While Epic is not mandating customer participation in its QHIN, Epic is forcing our Epic-based HIOs to join the Epic QHIN in order to stay on the Epic Honor Roll to get up to 10% Epic fee rebates.

The firm requirement that a health care provider's EHR can only be a participant, or downstream participant, in a single QHIN poses a very real threat not only to our regional and statewide HIE, but many local HIEs across the country.

TEFCA was designed for HIEs like the P3N to become QHINs, not for EHR vendors to become QHINs. Now that EHR vendors are QHINs, HIEs are largely prevented from participating in TEFCA for fear that their participants will not be able to be a member of their EHR vendor's QHIN and a local HIE that participates in a QHIN.

The first TEFCA QHINs were designated in December 2023; we are still waiting to see what impact HIO members' participation in their EHR vendor operated QHIN in Pennsylvania will have on P3N HIO participation.

2025 Advisory Board Meetings

- Friday, May 2, 2025, in-person at 2525 Seventh Street, Harrisburg, 10 a.m. – 2 p.m.
- Friday, August 1, 2025, in-person at 2525 Seventh Street, Harrisburg, 10 a.m. – 2 p.m.
- Friday, November 7, 2025, in-person at 2525 Seventh Street, Harrisburg, 10 a.m. – 2 p.m.

Public Comment

- Name of submitter for written comment submission acknowledged by chair
- Verbal comment (3 minutes per commenter)

Online Resources

PA eHealth further information:

[eHealth Partnership | Department of Human Services | Commonwealth of Pennsylvania](#)

PA eHealth Partnership Advisory Board:

[eHealth Advisory Board | Department of Human Services | Commonwealth of Pennsylvania](#)

P3N HIO Certification Package:

[HIO Connection | Department of Human Services | Commonwealth of Pennsylvania](#)

P3N Certified Health Information Organizations (HIO) Information:

[Choose your HIO July 2023 v8.pdf \(pa.gov\)](#)

List of clinical documents available by each HIO and HIO Member Organizations:

https://www.pa.gov/content/dam/copapwp-pagov/en/dhs/documents/ehealth/documents/Discrete%20Data_October%202023.xlsx

List of facilities sending ADTs through their HIO to the P3N:

[23-APRIL-2024_WEBPOST-P3N-ADT-Onboarding.xlsx \(live.com\)](#)

PA Navigate:

<http://pa-navigate.org>