



pennsylvania

DEPARTMENT OF HUMAN SERVICES
OFFICE OF MENTAL HEALTH AND
SUBSTANCE ABUSE SERVICES



Pennsylvania State Hospital Risk Management Summary and Indicator Report

December 2024

Prepared by:
Christina Sterner, M.S. CPIE
Wernersville State Hospital
E-Mail: csterner@pa.gov
Contributors:
SMH CPIEs & PI Staff
Valerie Minnich, RPh
June 13, 2025

Introduction

The State Hospital Risk Management System defines an incident as any patient-related event that has the potential for, or which results in, a negative impact upon the quality of patient care or services, including injury or death of a person served in the state hospital system. Past reports can be found on the DHS website using the following link.

<http://www.dhs.pa.gov/publications/forproviders/statehospitalriskmanagementsummaryreports/>

The data dictionary for the measurement system was updated on October 1, 2008, and is available for review as attachments to OMHSAS Bulletin titled Management of Incidents: SI-815 Incident Reporting and Risk Management Policy and Procedural Change. (Available via bulletin search at <http://www.dhs.pa.gov/> .)

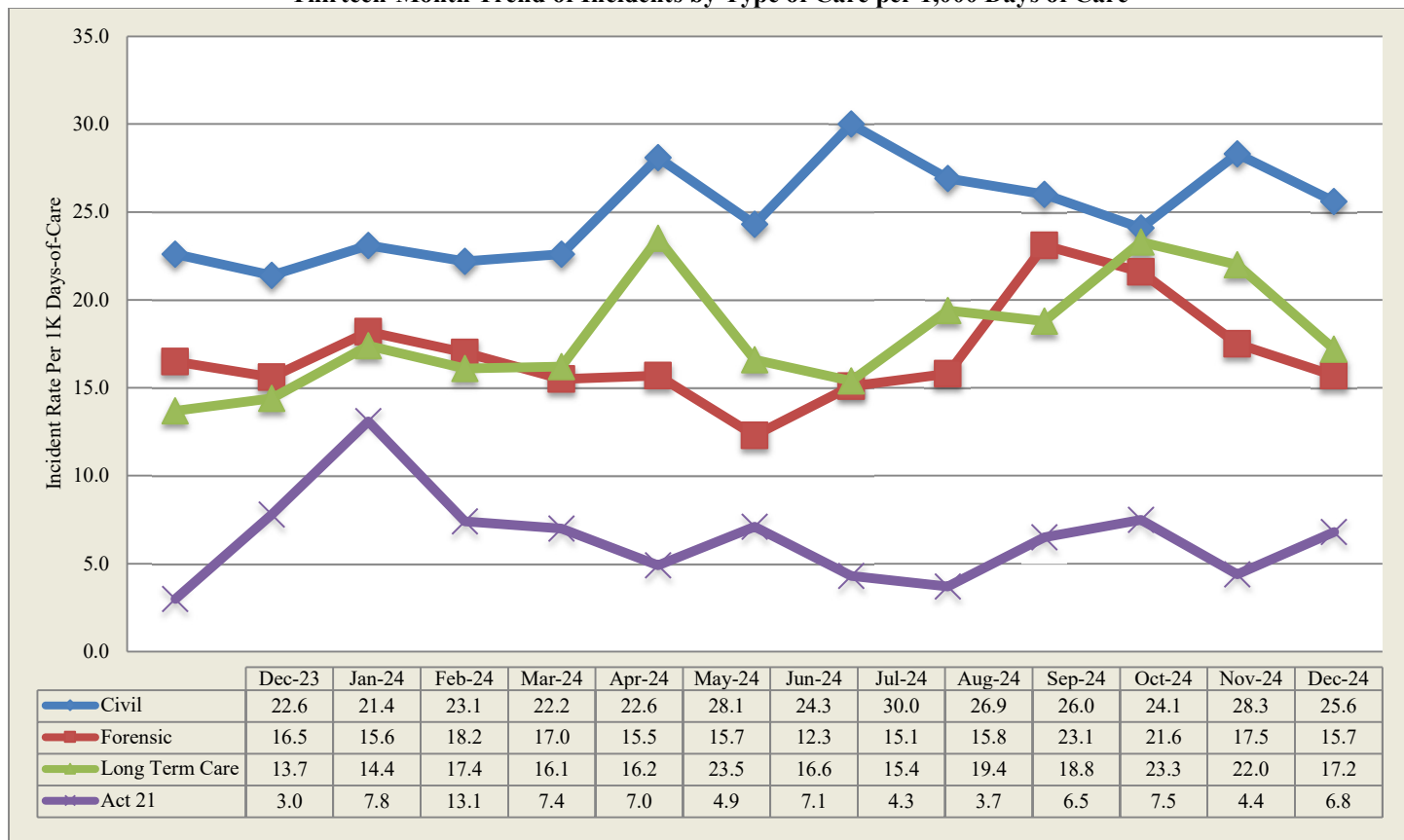
Table of Contents		
Indicator/Measure	Table	Page
Risk Management Indicators		
Census and Rates of Incidents	1	3
Thirteen-Month Trend of Incidents		3
Six-Month Summary of Selected Events		4
Category or Cause of Incidents: Civil	2	5
Primary Effect of Incidents: Civil	3	6
Category or Cause of Incidents: Forensic	4	7
Effect of Incidents: Forensic	5	7
Cause of Incidents: Long Term Care	6	8
Effect of Incidents: Long Term Care	7	8
Cause of Incidents: SRTP	8	9
Effect of Incidents: SRTP	9	9
13-Month Rate of Type 1 Falls per 1,000 Days of Care	10	10
13-Month Trend of Type 1 Falls		10
Hours of Seclusion Use	11	11
Number of Seclusion Events	12	11
Total Hours of Mechanical Restraint by Unit	13	11
Hours of Mechanical Restraint Use: 12 Months	14	11
Number of Mechanical Restraint Events: 12 Months	15	11
Hours of Physical Restraint Use by Unit	16	12
Hours of Physical Restraint Use: 12 Months	17	12
Number of Physical Restraint Events: 12 Months	18	12
24-Month Trend of Restraint and Seclusion Hours		13
Patient-to-Patient Assaults by Unit	19	14
13-Month Rate of Patient-to-Patient Assault Events with Injury per 1,000 Days-of-Care	20	14
Patient-to-Staff Assaults by Unit	21	15
13-Month Rate of Patient-to-Staff Assaults with Injury to Staff per 1,000 Days-of-Care	22	15
Risk Adjusted Table of Selected Safety Indicators	23	16
Wellness Indicators		
Reasons for Hospitalization as a Result of an Incident	24	17
Medication Use Indicators (On hold)		
Benzodiazepines	25	18
Multiple Atypicals	26	18
Typical-Atypical	27	18
STAT Medication Usage		
Civil	28	19
Forensic	29	20
ACT 21 (SRTP)	30	20

During **December 2024**, a total of **1001** incident reports were completed by the state hospital system. Additional records addressing specific categories from the previous month were included on page 4 of this report. The following is a breakdown of incidents by individual facility and type of care:

Table 1 - Number of Incident Reports

	Census 12/31/2024	Days Provided	Incidents	Per 1000 Days-of-Care
Clarks Summit	140	4370	55	12.6
Danville	159	4897	250	51.1
Norristown	120	3700	52	14.1
Torrance	156	4747	189	39.8
Warren	149	4634	123	26.5
Wernersville	263	8134	112	13.8
Total Civil	987	30482	781	25.6
Forensic				
Norristown	230	7118	111	15.6
Torrance	100	3100	49	15.8
Total Forensic	330	10218	160	15.7
Act 21				
Act 21	60	1616	11	6.8
Total Act 21	60	1616	11	6.8
Long Term Care				
South Mountain	91	2843	49	17.2
Total L. T. C.	91	2843	49	17.2
Total	1468	45159	1001	22.2

Thirteen-Month Trend of Incidents by Type of Care per 1,000 Days of Care



*Note: Rules regarding the reporting of incidents involving patient-to-patient assaults require a separate incident report form on each person involved in an altercation. This includes both the aggressor, when known and any other person involved. The numbers reported above reflect the monthly, total number of SI-815 reports coded as Patient-to-Patient Assaults and not the actual number of altercations.

The following table is refreshed each month from the most recent data (recent 6-month period) available from the State Hospital System RM database.

CATEGORY	Count	Jul_24	Aug_24	Sep_24	Oct_24	Nov_24	Dec_24
Accident-Injury	164	29	27	27	28	27	26
Adverse Drug Reaction	3		1			2	
Aggression	1050	198	169	158	162	169	194
Airway Obstruction type 1 Intervention	15	2		5	3	2	3
Airway Obstruction type 2 No Intervention	10	2	3	3			2
Alcohol Use/Possession/Suspected or Confirmed	1				1		
Alleged Nonconsensual Sexual Activity	8	2			4	2	
Alleged Pt. Abuse	32	2	6	7	6	2	9
Assault, Pt./Pt	1442	249	197	256	238	283	219
Assault, Pt./Staff	401	65	92	66	58	65	55
AWOL/UA	35	4	13	3	4	6	5
AWOL-Attempt	36	7	9	8	9	1	2
AWOL-Late	29	3	3	3	4	11	5
Change in Medical Status-Stabilized	47	10	8	7	10	6	6
Change in Medical Status-Transferred	330	57	60	47	56	52	58
Communications Sys. Misuse	40	7	5	6	9	8	5
Contraband Possession	98	28	11	7	17	17	18
Fall Type 1-Injury with treatment	234	36	48	32	45	30	43
Fall Type 2-No treatment needed	803	129	124	137	155	123	135
Family Concern	9		3	1	2	2	1
Illicit Substance Use/Possession	5			2		2	1
Indeterminate/Unconfirmed Cause of Injury	84	11	10	16	19	17	11
Medication Error	65	10	10	11	14	8	12
Missing Property	10	1	1	1	4		3
Other	429	74	60	74	76	87	58
Procedural Treatment Error	34	4	10	5	1	7	7
Property Damage	56	17	7	11	5	7	9
Seizure	34	4	9	2	8	7	4
Self-Injurious behavior	583	111	102	114	74	106	76
Sexual Behavior	67	8	11	10	10	9	19
Smoking Violation	8	3		2	2		1
Substantiated Patient Abuse	11	1	3	2	1	1	3
Sudden Acute Illness	2		1				1
Suicide Attempt	7	1	1	3			2
Suicide threat/plan	27	5	2	2	5	5	8
Theft	66	23	19	15	4	1	4
Unknown	6		2	1		3	
Unsubstantiated Nonconsensual Sexual Activity	8	1	2	3	1	1	
Unsubstantiated Patient Abuse	14	1	2	2	5	4	

Table 2 - Category or Cause of Incidents in the Civil Hospitals

Primary Cat #	CLA	DAN	NOR	TOR	WAR	WER	Count
Accident-Injury	1	3	0	3	5	1	13
Aggression	4	51	5	39	31	14	144
Airway Obstruction type 1 Intervention	0	0	1	0	1	0	2
Airway Obstruction type 2 No Intervention	0	0	2	0	0	0	2
Alleged Pt. Abuse	8	0	0	0	0	0	8
Assault, Pt./Pt	12	42	13	37	25	33	162
Assault, Pt./Staff	0	22	1	7	6	5	41
AWOL/UA	0	1	0	2	0	1	4
AWOL-Attempt	1	1	0	0	0	0	2
AWOL-Late	0	1	0	1	3	0	5
Change in Medical Status-Stabilized	0	0	1	1	1	0	3
Change in Medical Status-Transferred	3	8	3	11	9	8	42
Communications Sys. Misuse	2	2	0	0	1	0	5
Contraband Possession	1	1	2	11	1	0	16
Fall Type 1-Injury with treatment	3	0	5	12	2	6	28
Fall Type 2-No treatment needed	6	28	8	23	29	26	120
Family Concern	0	0	0	0	0	1	1
Illicit Substance Use/Possession	0	0	0	0	1	0	1
Indeterminate/Unconfirmed Cause of Injury	0	8	0	2	1	0	11
Medication Error	3	2	2	1	0	0	8
Missing Property	2	0	0	1	0	0	3
Other	1	20	4	15	1	1	42
Procedural Treatment Error	0	0	0	0	0	6	6
Property Damage	2	2	1	1	1	0	7
Seizure	0	0	0	1	0	1	2
Self-Injurious behavior	4	40	4	11	1	9	69
Sexual Behavior	2	8	0	7	0	0	17
Smoking Violation	0	0	0	0	1	0	1
Substantiated Patient Abuse	0	3	0	0	0	0	3
Sudden Acute Illness	0	0	0	1	0	0	1
Suicide Attempt	0	1	0	0	0	0	1
Suicide threat/plan	0	6	0	1	0	0	7
Theft	0	0	0	1	3	0	4
Totals	55	250	52	189	123	112	781

Table 3 - Primary Effect of Incidents in the Civil Hospitals

Primary effect	CLA	DAN	NOR	TOR	WAR	WER	Count
Unknown	0	1	0	0	0	0	1
Abrasion/scrape/scratch/hematoma	3	25	0	8	2	17	55
Allergic reaction	0	1	0	0	0	0	1
Asphyxiation	0	0	1	0	0	0	1
Bite-Human	0	7	0	0	0	0	7
Bite-Insect	0	0	0	1	0	0	1
Blister	0	1	0	0	0	0	1
Body System Illness	0	6	1	3	5	0	15
Bruise/contusion/discoloration	2	8	2	4	3	1	20
Death	1	0	0	0	0	0	1
Edema/swelling	2	4	2	3	0	2	13
Emesis	1	0	1	1	2	1	6
Epistaxis	0	1	0	0	0	0	1
Erythema/redness	1	3	0	2	3	1	10
Fever	0	1	0	0	1	0	2
Fracture	0	0	0	0	2	0	2
Ingestion of foreign body	1	3	0	1	1	3	9
Laceration: NO sutures/staples/steri-strips	0	0	2	1	0	0	3
Lethargy	0	0	0	1	0	2	3
Muscle pull/strain/sprain	0	0	1	1	0	0	2
No Injury/NA	39	184	35	128	90	76	552
Other	2	1	2	26	1	3	35
Pain unspecified	0	0	1	0	1	0	2
Pain, Specified	3	3	4	5	9	5	29
Respiratory Distress	0	0	0	2	3	0	5
Seizure	0	1	0	0	0	1	2
Skin Irritation/Rash	0	0	0	1	0	0	1
Unconscious/Unresponsive	0	0	0	1	0	0	1
Totals	55	250	52	189	123	112	781

Table 4 - Cause of Incidents in the Forensic Units Category or Cause of Incidents in the Forensic Service by Unit

	NSH											TSH					Sys
Primary Cat #	51A1	51A2	51B1	51B2	51C1	51C2	10D1	10D2	10E1	10E2	Total	FB3	FB4	FC1	FC2	Total	Count
Accident-Injury				1							1					0	1
Aggression		1	4		3	4	3	4	6	4	29	1	2	8	6	17	46
Airway Obstruction type 1 Intervention				1							1					0	1
Alleged Pt. Abuse					1						1					0	1
Assault, Pt./Pt		6	2	2	4	4	10	6	2	2	38			3	10	13	51
Assault, Pt./Staff			1		3	1	2				7	1		3		4	11
AWOL/UA		1									1					0	1
Change in Medical Status-Stabilized	1				1						2		1			1	3
Change in Medical Status-Transferred		1			1					1	3	1	1			2	5
Contraband Possession											0	1			1	2	2
Fall Type 1-Injury with treatment				1	3	1	1				6		1			1	7
Fall Type 2-No treatment needed								1			1		3			3	4
Medication Error					1	1					2					0	2
Other	1		2		2	2	1			3	11		1	1	1	3	14
Procedural Treatment Error								1			1					0	1
Property Damage			2								2					0	2
Self-Injurious behavior			1	1	2						4	1				1	5
Sexual Behavior			1								1					0	1
Suicide Attempt											0	1				1	1
Suicide threat/plan											0				1	1	1
Totals	2	9	13	6	21	13	17	12	8	10	111	6	9	15	19	49	160

Table 5 - Effect of Incidents in the Forensic Service by Unit

	NSH											TSH					Sys
EFFECT	51A1	51A2	51B1	51C1	51C2	51B2	10D1	10D2	10E1	10E2	Total	FB3	FB4	FC1	FC2	Total	Count
Abrasion/scrape/scratch/hematoma			2	2				2			6					0	6
Allergic reaction	1										1					0	1
Bruise/contusion/discoloration					1	1	1				3			1	1	2	5
Burn/Scald						1					1					0	1
Edema/swelling				1							1					0	1
Erythema/redness			1		1						2					0	2
Laceration: NO sutures/staples/steri-strips		2		1							3					0	3
Laceration: with steri strips/glue					1				1		2					0	2
Lethargy		1									1		1			1	2
Muscle pull/strain/sprain					1						1					0	1
No Injury/NA		5	10	13	9	2	16	10	7	8	80	3	5	11	18	37	117
Other	1			2						2	5	3	1	3		7	12
Pain unspecified				1							1					0	1
Pain, Specified		1				2					3		2			2	5
Seizure				1							1					0	1
Totals	2	9	13	21	13	6	17	12	8	10	111	6	9	15	19	49	160

Table 6 -Cause of Incidents in the Long Term Care Facility

Cause	3A	5A	6A	6B	Count
Accident-Injury	6	1	1	3	11
Aggression			2		2
Assault, Pt./Pt			1	1	2
Assault, Pt./Staff	1		2		3
Change in Medical Status-Transferred	2		2	6	10
Fall Type 1-Injury with treatment	1		3	2	6
Fall Type 2-No treatment needed	2		8	1	11
Medication Error			2		2
Other				1	1
Sexual Behavior				1	1
Totals	12	1	21	15	49

Table 7 - Effect of Incidents in the Long Term Care Facility

EFFECT	3A	5A	6A	6B	Count
Abrasion/scrape/scratch/hematoma	2	1	2	4	9
Bruise/contusion/discoloration	3			1	4
Burn/Scald	1				1
Death				1	1
Laceration: NO sutures/staples/steri-strips			1		1
Laceration: with steristrips/glue			1		1
Laceration: with sutures/staples			1		1
Lethargy	2		1	6	9
No Injury/NA	4		15	3	22
Totals	12	1	21	15	49

Act-21-Sexual Responsibility & Treatment Program at Torrance State Hospital

In July 2003, the Pennsylvania Legislature enacted Act 21 for adjudicated youth, aging out of the juvenile justice system who have a "mental abnormality" that renders them unable to control their violent sexual impulses. The Act mandates the state to provide mental health and sex-offense specific treatment to an identified population that had been adjudicated of certain sex crimes, received treatment in a juvenile program, yet remains a significant risk to sexually re-offend after reaching the age of 21, an age when oversight by the juvenile justice system typically ends. The Act requires the referral of such individuals who have committed these specific crimes to the Pennsylvania Sexual Offenders Assessment Board (SOAB) ninety days prior to their 20th birthday for purposes of determining if the individual has "serious difficulty in controlling sexually violent behavior." If so determined, a petition for a mental health hearing will be made for determination of civil commitment to the Sexual Responsibility and Treatment Program (S RTP) on the grounds of Torrance State Hospital. On July 1, 2006, the operation of this program transferred from an independent contractor to the Torrance State Hospital.

Table 8 - Cause of Incidents in the Sexual Responsibility and Treatment Program

Cause	TOR	Count
Accident-Injury	1	1
Assault, Pt./Pt	2	2
Change in Medical Status-Transferred	1	1
Fall Type 1-Injury with treatment	2	2
Other	1	1
Seizure	2	2
Self-Injurious behavior	2	2
Totals	11	11

Table 9 - Effect of Incidents in the Sexual Responsibility and Treatment Program

Primary effect	TOR	Count
Abrasion/scrape/scratch/hematoma	2	2
Bruise/contusion/discoloration	1	1
Edema/swelling	1	1
Laceration: with steristrips/glue	1	1
No Injury/NA	3	3
Seizure	2	2
Syncopal episode	1	1
Totals	11	11

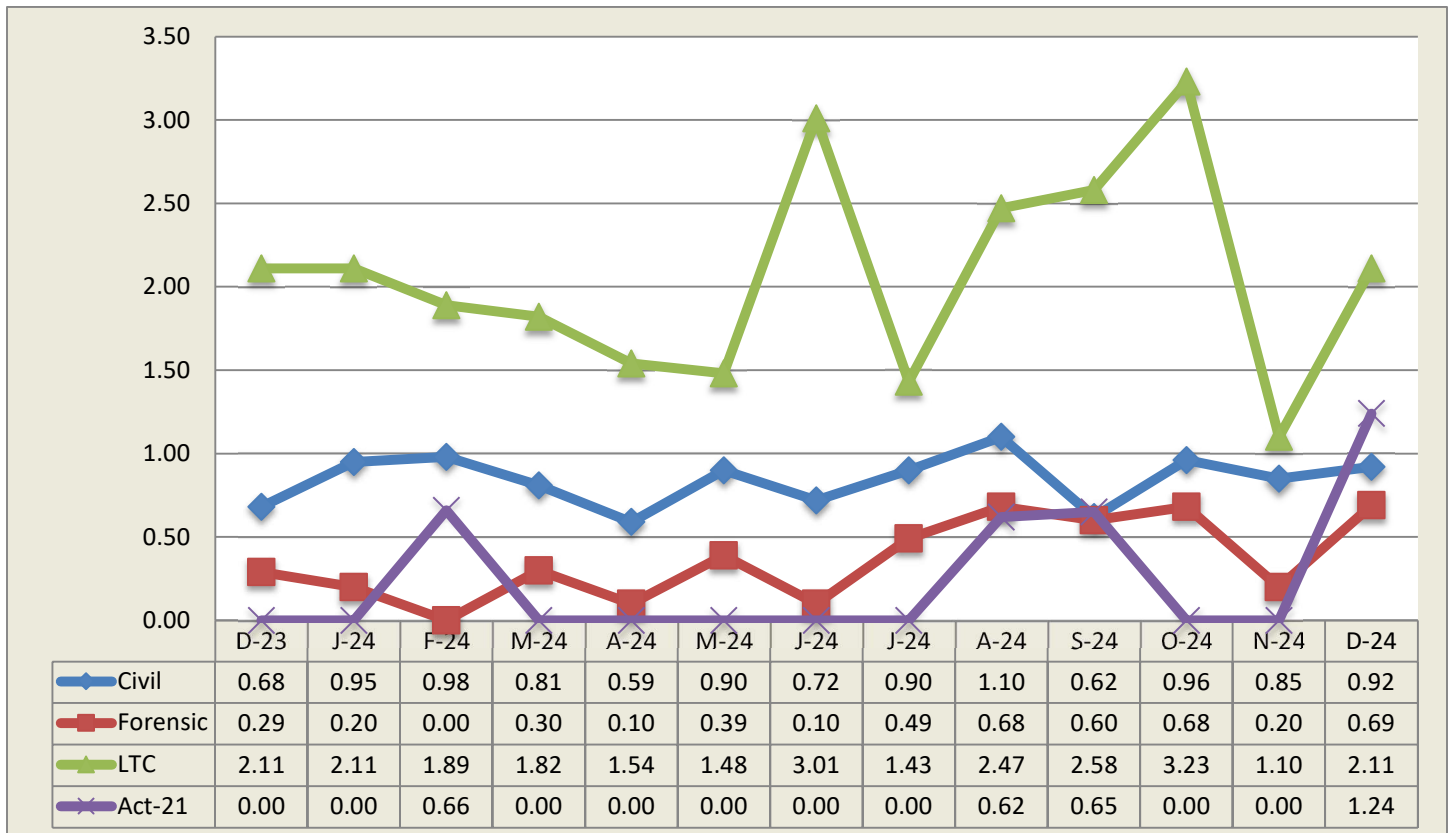
Falls

Falls within the state hospital risk management system are divided into two categories, type 1 and type 2, with the need for medical intervention or lack thereof defining the difference. The following data relates to falls, type 1 which are defined as an involuntary descent to a lower position, excluding seizures, that is witnessed or reported and requires medical intervention.

Table 10 - 13-Month Rate of Type 1 Falls Per 1,000 Days-of-Care

M/Year	Civil Hospital							Forensic			A21	LTC	Sys Avg
	Cl	Dan	Nor	Tor	War	Wer	Ttl	Nor	Tor	Total	A21	SMRC	
Dec-23	0.47	0.00	0.59	1.96	0.00	0.87	0.68	0.28	0.32	0.29	0.00	2.11	0.66
Jan-24	1.90	0.20	1.20	1.33	0.00	1.11	0.95	0.14	0.33	0.20	0.00	2.11	0.82
Feb-24	1.00	0.00	0.63	2.82	0.25	1.05	0.98	0.00	0.00	0.00	0.66	1.89	0.80
Mar-24	0.46	0.00	0.58	2.18	0.00	1.23	0.81	0.42	0.00	0.30	0.00	1.82	0.72
Apr-24	0.94	0.00	0.00	1.59	0.00	0.76	0.59	0.00	0.33	0.10	0.00	1.54	0.51
May-24	0.68	0.40	0.55	2.86	0.00	0.86	0.90	0.14	0.95	0.39	0.00	1.48	0.78
Jun-24	0.23	0.00	1.69	1.79	0.00	0.77	0.72	0.00	0.33	0.10	0.00	3.01	0.69
Jul-24	0.91	0.00	1.94	1.49	0.00	1.12	0.90	0.57	0.32	0.49	0.00	1.43	0.81
Aug-24	0.23	0.00	0.84	2.51	0.46	1.86	1.10	0.84	0.32	0.68	0.62	2.47	1.07
Sep-24	0.71	0.00	0.57	1.97	0.00	0.51	0.62	0.72	0.33	0.60	0.65	2.58	0.74
Oct-24	0.45	0.41	1.08	2.40	0.22	1.12	0.96	0.98	0.00	0.68	0.00	3.23	1.00
Nov-24	1.17	0.00	1.13	3.15	0.00	0.26	0.85	0.15	0.33	0.20	0.00	1.10	0.69
Dec-24	0.69	0.00	1.35	2.53	0.43	0.74	0.92	0.84	0.32	0.69	1.24	2.11	0.95

13-Month Trend of Type 1 Falls by Type of Care per 1,000 Days-of-Care



State Hospital Use of Seclusion

Civil and Forensic

Data on seclusion use for psychiatric reasons includes the civil and forensic populations and is reported for both monthly and yearly totals.

Table 11 - Hours of Seclusion Use, Monthly Totals for Past Year

No Use of Seclusion in PA State Hospital system since July 2013

Table 12 - Number of Seclusion Events, Monthly Totals for Past Year

No Use of Seclusion in PA State Hospital system since July 2013

State Hospital Use of Mechanical Restraint

Civil and Forensic

Data on mechanical restraint use for psychiatric reasons includes the forensic and civil populations and is reported for both monthly and yearly totals.

Table 13 - Total Hours of Mechanical Restraint Use by Hospital and Unit In Month

No use of Mechanical Restraint in PA State Hospital system since September 2015

Table 14 - Hours of Mechanical Restraint Use, Monthly Totals for Past Year

No use of Mechanical Restraint in PA State Hospital system since September 2015

Table 15 - Number of Mechanical Restraint Events, Monthly Totals for Past Year

No use of Mechanical Restraint in PA State Hospital system since September 2015

State Hospital Use of Physical Holds

Data on physical holds use for psychiatric reasons includes all level of care populations and is reported for both monthly and yearly totals. Physical hold events lasting less than 60 seconds are reflected as 0.00 hours.

Table 16 - Hours of Physical Holds (Restraint) Used by Hospital & Unit

ABV	WARD	Total		ABV	WARD	Total		ABV	WARD	Total
TOR	FC1	0.20		CLA	6	0.05		NOR	10E1	0.01
DAN	210	0.08		NOR	51B1	0.02		CLA	4	0.01
NOR	10D2	0.06		WER	37-4	0.02		NOR	10D1	0.003
NOR	51A2	0.06		NOR	51C1	0.01		DAN	312	0.001
NOR	51C2	0.05		NOR	01A2	0.01				

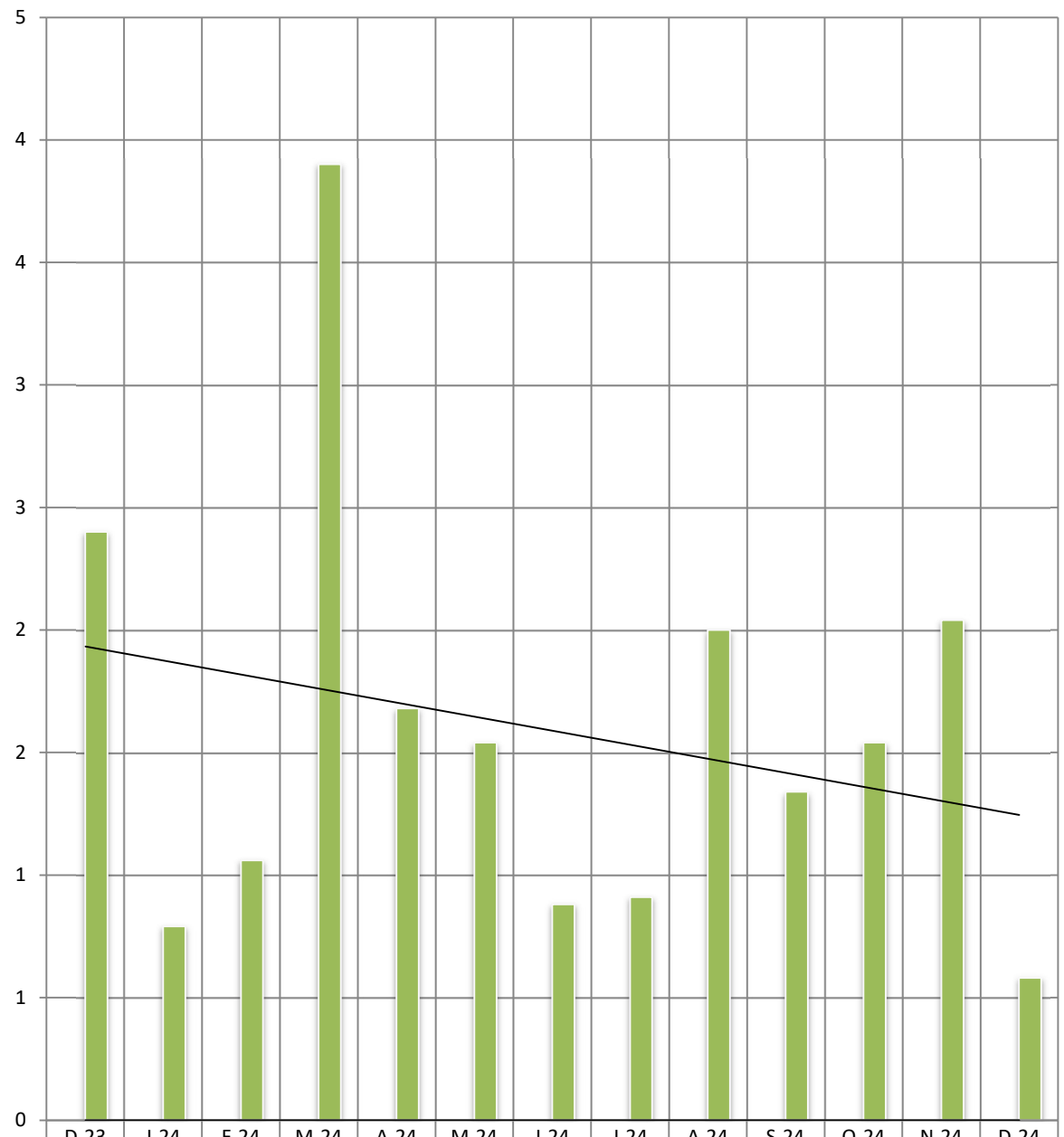
Table 17 - Hours of Physical Holds (Restraint) Use, Monthly Totals for Past Year

ABV	Total	Jan_24	Feb_24	Mar_24	Apr_24	May_24	Jun_24	Jul_24	Aug_24	Sep_24	Oct_24	Nov_24	Dec_24
CLA	1.23	0.00	0.02	0.15	0.58	0.18	0.05	0.10	0.05	0.00	0.02	0.02	0.06
DAN	1.95	0.18	0.24	0.26	0.28	0.33	0.08	0.13	0.04	0.11	0.00	0.03	0.08
NOR	5.80	0.18	0.33	0.28	0.53	0.42	0.18	0.42	1.06	0.67	0.69	1.34	0.22
TOR	5.14	0.40	0.47	2.78	0.20	0.21	0.45	0.00	0.35	0.00	0.20	0.03	0.20
WAR	7.55	0.00	0.00	0.08	0.07	3.85	0.00	0.25	0.18	0.48	0.62	0.70	0.00
WER	1.61	0.03	0.00	0.35	0.02	0.01	0.16	0.01	0.32	0.08	0.12	0.14	0.02
Total	23.28	0.79	1.05	3.90	1.68	5.00	0.92	0.91	2.00	1.34	1.64	2.25	0.58

Table 18 - Number of Physical Holds (Restraint) Events, Monthly Totals for Past Year

ABV	Total	Jan_24	Feb_24	Mar_24	Apr_24	May_24	Jun_24	Jul_24	Aug_24	Sep_24	Oct_24	Nov_24	Dec_24
CLA	33	0	1	5	13	4	2	2	1	0	2	1	2
DAN	66	9	10	9	9	7	3	5	2	5	0	1	6
NOR	319	21	27	11	18	25	15	30	34	46	34	40	18
TOR	39	6	2	17	3	3	1	0	2	0	2	1	2
WAR	78	0	0	2	2	21	0	8	2	11	20	12	0
WER	26	2	0	5	1	1	4	1	3	1	1	6	1
Total	561	38	40	49	46	61	25	46	44	63	59	61	29

Total Hours by Month



Mechanical Restraint	0.00	0.00	0.00	0.00	0.00	0.00	0.00	0.00	0.00	0.00	0.00	0.00	0.00
Physical Restraint	2.40	0.79	1.06	3.90	1.68	1.54	0.88	0.91	2.00	1.34	1.54	2.04	0.58

Mechanical Restraint Physical Restraint Linear (Mechanical Restraint) Linear (Physical Restraint)

Assaults

Assaults within the state hospital system are defined as any aggressive act by a patient, involving physical contact that may or may not result in injury. Assaults can be directed at a peer, staff or any other individual. The system was designed to require an incident report (form SI-815) on any patient involved in a physical altercation regardless of who may have started the assault. Therefore, every patient-to-patient altercation will result in at least two incident reports.

Table 19 - Patient-to-Patient Assaults by Unit, All Levels of Care

ABV	WARD	Cnt		ABV	WARD	Cnt		ABV	WARD	Cnt
WER	35-3	20		WER	35-2	5		DAN	211	2
DAN	210	19		NOR	51C2	4		WAR	3CM	2
WAR	2NM	15		NOR	51C1	4		DAN	310	2
TOR	012	13		CLA	5	4		NOR	01C2	2
TOR	024	12		DAN	311	4		TOR	062	2
NOR	10D1	10		TOR	022	4		NOR	10E2	2
TOR	FC2	10		WER	37-1	4		NOR	51B2	2
DAN	212	9		TOR	FC1	3		CLA	3	2
WAR	3SW	9		NOR	01C1	3		NOR	51B1	2
DAN	312	6		TOR	014	3		TOR	011	2
NOR	01A2	6		TOR	013	3		NOR	10E1	2
NOR	10D2	6		NOR	01A1	2		SMO	6A	1
CLA	4	6		WER	37-4	2		WAR	3IF	1
NOR	51A2	6		WER	34-3	2		SMO	6B	1

Table 20 - Rate of Patient-to-Patient Assaults Events with Patient Injury per 1,000 Days-of-Care

	Civil							Forensic			S RTP
Pt.-to-Pt. Assault w/ any Injury	Cla	Dan	Nor	Tor	War	Wer	Tot.	Nor	Tor	Tot.	S RTP
Dec-23	0.71	1.02	2.65	0.87	0.23	0.99	1.02	3.08	1.27	2.53	0.00
Jan-24	0.24	0.82	2.99	0.89	0.24	0.98	0.95	4.33	0.33	3.13	0.00
Feb-24	0.50	0.44	2.84	0.47	0.50	1.05	0.91	5.30	0.34	3.77	0.00
Mar-24	0.00	0.61	2.90	1.09	0.23	0.49	0.77	2.96	0.33	2.17	0.00
Apr-24	0.24	0.64	1.45	0.45	0.23	0.38	0.52	2.01	0.33	1.50	0.00
May-24	0.68	2.01	0.83	0.88	0.69	1.10	1.06	2.63	1.58	2.31	0.00
Jun-24	0.23	0.63	0.85	0.90	1.19	0.64	0.72	1.86	0.00	1.30	0.00
Jul-24	0.00	0.81	2.49	1.06	2.10	0.87	1.13	1.85	0.32	1.38	0.00
Aug-24	0.46	1.21	0.56	0.63	0.69	0.25	0.60	2.09	0.64	1.65	0.00
Sep-24	0.47	0.63	1.43	0.44	1.85	0.77	0.89	4.47	0.33	3.21	0.65
Oct-24	0.00	0.81	1.35	0.65	0.22	0.62	0.60	3.93	0.95	3.02	0.00
Nov-24	0.23	0.63	2.25	2.03	2.47	0.77	1.30	3.49	1.33	2.83	0.00
Dec-24	0.23	1.23	1.08	0.84	0.86	1.23	0.95	1.55	1.29	1.47	0.00

Table 21 - Patient-to-Staff Assault Events by Unit, All Levels of Care

ABV	WARD	Cnt		ABV	WARD	Cnt		ABV	WARD	Cnt
DAN	210	9		NOR	51C1	3		TOR	012	1
DAN	311	6		SMO	6A	2		WER	37-4	1
DAN	310	4		WAR	2SW	2		TOR	013	1
WAR	2NM	4		NOR	10D1	2		TOR	021	1
TOR	024	4		NOR	01C1	1		TOR	FB3	1
WER	35-3	3		NOR	51B1	1		WER	34-3	1
TOR	FC1	3		NOR	51C2	1		SMO	3A	1
DAN	312	3								

Table 22 - Rate of Patient-to-Staff Assault Events with Injury to Staff per 1,000 Days-of-Care

	Civil							Forensic			SRT P
Pt/Staff Assault w/ Staff Inj per 1K days	Cla	Dan	Nor	Tor	War	Wer	Tot.	Nor	Tor	Tot.	SRT P
Dec-23	0.00	1.43	0.00	0.00	0.70	1.24	0.68	0.14	0.00	0.10	0.00
Jan-24	0.00	0.61	0.00	0.22	0.00	0.12	0.17	0.14	0.00	0.10	0.00
Feb-24	0.50	0.00	0.32	0.24	0.00	0.92	0.40	0.45	0.00	0.31	0.00
Mar-24	0.23	0.00	0.00	0.00	0.00	0.86	0.27	0.42	0.00	0.30	0.62
Apr-24	0.24	0.43	0.00	0.45	0.00	0.25	0.24	0.00	0.00	0.00	0.00
May-24	0.68	0.00	0.00	0.44	0.69	0.12	0.30	0.00	0.00	0.00	0.00
Jun-24	0.23	0.42	0.00	0.22	0.00	0.13	0.17	0.14	0.00	0.10	0.00
Jul-24	0.00	0.00	0.00	1.06	0.23	0.50	0.33	0.00	0.32	0.10	0.00
Aug-24	0.23	0.00	0.00	2.30	0.23	0.37	0.50	0.97	0.00	0.68	0.00
Sep-24	0.00	0.21	0.00	0.88	0.00	0.39	0.27	1.30	0.00	0.90	0.00
Oct-24	0.23	0.00	0.00	0.00	0.00	0.37	0.13	0.42	0.32	0.39	0.00
Nov-24	0.23	0.00	0.56	0.23	1.35	0.38	0.44	0.58	0.33	0.51	0.00
Dec-24	0.00	0.00	0.00	0.63	0.00	0.25	0.16	0.14	0.65	0.29	0.00

Table 23 - Risk Adjusted Safety Indicators

Dec-24	Civil							Forensic					
Month	Cla	Dan	Nor	Tor	War	Wer	C. Tota	Nor	Tor	F. Total	LTC	SRTP	System
Patient Days	4370	4897	3700	4747	4634	8134	30482	7118	3100	10218	2843	1616	45159
Census	140	159	120	156	149	263	987	230	100	330	91	60	1468
Safety Indicators													
Type 1 Falls (count)	3	0	5	12	2	6	28	6	1	7	6	2	43
Num Per 1,000 Pt Days	0.69	0.00	1.35	2.53	0.43	0.74	0.92	0.84	0.32	0.69	2.11	1.24	0.95
Total Falls (count)	9	28	13	35	31	32	148	7	4	11	17	2	178
Num Per 1,000 Pt Days	2.06	5.72	3.51	7.37	6.69	3.93	4.86	0.98	1.29	1.08	5.98	1.24	3.94
PT:PT Assaults w/Injury(count)	1	6	4	4	4	10	29	11	4	15	0	0	44
Num Per 1,000 Pt Days	0.23	1.23	1.08	0.84	0.86	1.23	0.95	1.55	1.29	1.47	0.00	0.00	0.97
Total PT:PT Assault Events (count)	12	42	13	37	25	33	162	38	13	51	2	2	217
Num Per 1,000 Pt Days	2.75	8.58	3.51	7.79	5.39	4.06	5.31	5.34	4.19	4.99	0.70	1.24	4.81
PT:Staff Assaults w/Injury(count)	0	0	0	3	0	2	5	1	2	3	0	0	8
Num Per 1,000 Pt Days	0.00	0.00	0.00	0.63	0.00	0.25	0.16	0.14	0.65	0.29	0.00	0.00	0.18
Total PT:Staff Assault Events (count)	0	22	0	7	6	5	40	7	4	11	3	0	54
Num Per 1,000 Pt Days	0.00	4.49	0.00	1.47	1.29	0.61	1.31	0.98	1.29	1.08	1.06	0.00	1.20
SIB Events (count)	4	40	4	11	1	9	69	4	1	5	0	2	76
Num Per 1,000 Pt Days	0.92	8.17	1.08	2.32	0.22	1.11	2.26	0.56	0.32	0.49	0.00	1.24	1.68
Total Physical Restraint Hours	0.06	0.08	0.011	0.00	0.00	0.02	0.17	0.21	0.2	0.41		0.00	0.58
Num Per 1,000 Pt Days	0.01	0.02	0.00	0.00	0.00	0.00	0.01	0.03	0.06	0.04		0.00	0.01
Medication Measures (On hold)													
Benzodiazepines							0			0			0
Percentage of Census	0.00	0.00	0.00	0.00	0.00	0.00	0.00	0.00	0.00	0.00		0.00	0.00
Multiple Atypicals							0			0			0
Percentage of Census	0.00	0.00	0.00	0.00	0.00	0.00	0.00	0.00	0.00	0.00		0.00	0.00
Typical- Atypical							0			0			0
Percentage of Census	0.00	0.00	0.00	0.00	0.00	0.00	0.00	0.00	0.00	0.00		0.00	0.00

Wellness Indicators

The National Association of State Mental Health Program Directors (NASMHPD) issued a report in October 2006 about mortality and morbidity in people with serious mental illness (SMI). According to Mental Health America's *Survey of People with Schizophrenia and Providers* (www.mentalhealthamerica.net), the NASMHPD report revealed that people with SMI die on average 25 years earlier than the general population. The major natural causes of death for people with SMI are heart disease, diabetes, respiratory disease and infectious disease. Many of the risk factors for these diseases are modifiable.

Table 24 - Reasons for Hospitalizations as the Result of an Incident, All Levels of Care

The Risk Management System requires that an incident report form be completed anytime a person is transported from a state hospital to an acute care hospital. This includes if the person was only seen in the emergency room, received diagnostic tests and/or was actually admitted. It does **not** include hospitalizations for a preplanned procedure, test or surgery.

Cause	CLA	DAN	NOR	TOR	WAR	WER	Count
Alleged Pt. Abuse	1						1
Change in Medical Status-Transferred	3	8	6	4	9	8	38
Fall Type 2-No treatment needed		1				1	2
Self-Injurious behavior		2				2	4
Totals	4	11	6	4	9	11	45

Medication Measures

Beginning in September 2008 the OMHSAS Bureau of Community and Hospital Operations identified the following three medication measures for inclusion in this monthly report. The table information is compiled from the QS1 pharmacy software and reflects the unique count of the number of people served at each hospital on the last day of the month for each measure.

These charts are currently on hold.

Table 25 - Benzodiazepines

Measure Definition: *Benzodiazepines refers to the number of unique patients served at each hospital, by level-of-care, who have an active, straight order for any benzodiazepine medication on the last day of each month.*

Table 26 - Multiple Atypicals

Measure Definition: *Multiple Atypicals refers to the number of unique patients served at each hospital, by level-of-care, who have an active, straight order for two or more atypical antipsychotic medications on the last day of each month.*

Table 27 - Typical-Atypical

Measure Definition: *Typical-Atypicals refers to the number of unique patients served at each hospital, by level-of-care, who have an active, straight order for a typical and an atypical antipsychotic medication on the last day of each month.*

Table 28 - STAT Medication Usage – Civil

Measure Definition: *STAT medication are counted as psychiatric medications that have been administered. If two STAT medications are administered, it is counted as one event. Each STAT medication event is documented by “Route of Administration” and “Requested by”. This measure includes all levels of care.*

CLARKS SUMMIT (FY 2024-25)							
Month	Total Number of STATs	Route of Admin			Requested by:		
		PO	IM	PEG Tube:	Indv	MD/DO	RN
Dec-24	22	19	3	0	9	11	2

DANVILLE (FY 2024-25)							
Month	Total Number of STATs	Route of Admin			Requested by:		
		PO	IM	Peg Tube:	Indv	MD/OD	RN
Dec-24	162	24	138	0	45	1	116

NORRISTOWN - CIVIL (FY 2024-25)							
Month	Total Number of STATs	Route of Admin			Requested by:		
		PO	IM	Peg Tube:	Indv	MD/DO	RN
Dec-24	21	15	6	0	2	0	19

TORRANCE - CIVIL (FY 2024-25)							
Month	Total Number of STATs	Route of Admin			Requested by:		
		PO	IM	Peg Tube:	Indv	MD/DO	RN
Dec-24	28	5	23	0	4	3	21

WARREN (FY 2024-25)							
Month	Total Number of STATs	Route of Admin			Requested by:		
		PO	IM	Peg Tube	Indv	MD/DO	RN
Dec-24	22	12	10	0	3	3	16

WERNERSVILLE (FY 2024-25)							
Month	Total Number of STATs	Route of Admin			Requested by:		
		PO	IM	Peg Tube:	Indv	MD/DO	RN
Dec-24	77	53	24	0	28	26	23

Table 29 - STAT Medication Usage – Forensic

NORRISTOWN - FORENSIC (FY 2024-25)							
Month	Total Number of STATs	Route of Admin			Requested by:		
		PO	IM	Peg Tube/other	Indv	MD/DO	RN
Dec-24	137	65	72	0	36	13	88

TORRANCE - FORENSIC (FY 2024-25)							
Month	Total Number of STATs	Route of Admin			Requested by:		
		PO	IM	Peg Tube:	Indv	MD/DO	RN
Dec-24	47	30	17	0	14	5	28

Table 30 - STAT Medication Usage – ACT 21 (SRTP)

TORRANCE - ACT 21 (FY 2024-25)							
Month	Total Number of STATs	Route of Admin			Requested by:		
		PO	IM	Peg Tube:	Indv	MD/DO	RN
Dec-24	1	1	0	0	0	0	1