



pennsylvania
DEPARTMENT OF HUMAN SERVICES

Monthly Data Report

May 2025

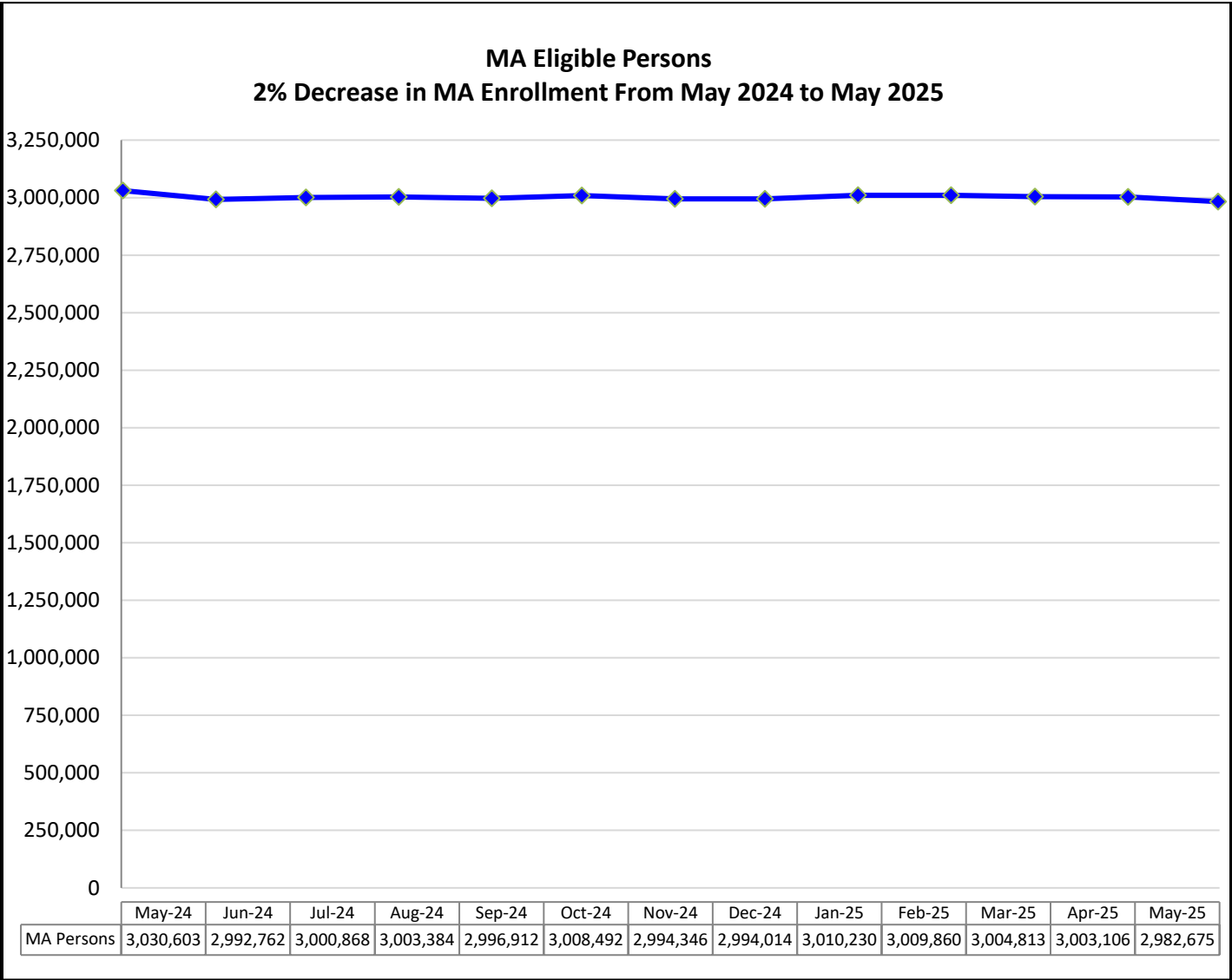
Contact David Chu (dchu@pa.gov) for questions on report

TABLE OF CONTENTS

CTRL+Click on one of the major headings below will link you to that section.

MEDICAL ASSISTANCE AND OTHER HEALTH CARE SERVICES.....	2
MA Eligible Persons.....	2
MA Children and CHIP	3
State Hospital Admissions/Census	4
BENEFIT ASSISTANCE PROGRAMS FOR CHILDREN AND FAMILIES	5
TANF Individuals.....	5
Number and Percent: Non-disabled TANF Adults Working	5
Number and Percent: Non-disabled TANF Adults Working/Training 20 or More Hours/Week	5
TANF Workforce Participation Rates.....	6
TANF Budgets Leaving for Employment.....	6
SNAP Eligible Persons	7
Non-disabled SNAP Adults Working	8
SSI Adults and Children.....	9
Child Support Measures	9
CHILD WELFARE SERVICES.....	10
Monthly YDC Admissions.....	10
CHILD CARE AND EARLY LEARNING SERVICES	10
Child Care Subsidies-Enrollment-Waiting List.....	11
Regulated Child Care Usage.....	11
Subsidized Child Care: Regulated vs. Unregulated Settings.....	11
Children in STARS 3 or 4.....	12
ITF Waiver and EI: Enrollment	12
LONG TERM SUPPORTS FOR PERSONS WITH DISABILITIES AND OLDER PENNSYLVANIANS	13
Waiver Enrollments (OLTL):	
Act 150	15
OBRA	15
LIFE.....	16
Community Health Choices.....	16
Wavier Enrollments (ODP):	
Consolidated and Adult Autism.....	17
P/FDS and Community Living	18
Community Living Waiver	18
Intermediate Care Facilities: Enrollments.....	19
OTHER METRICS	19

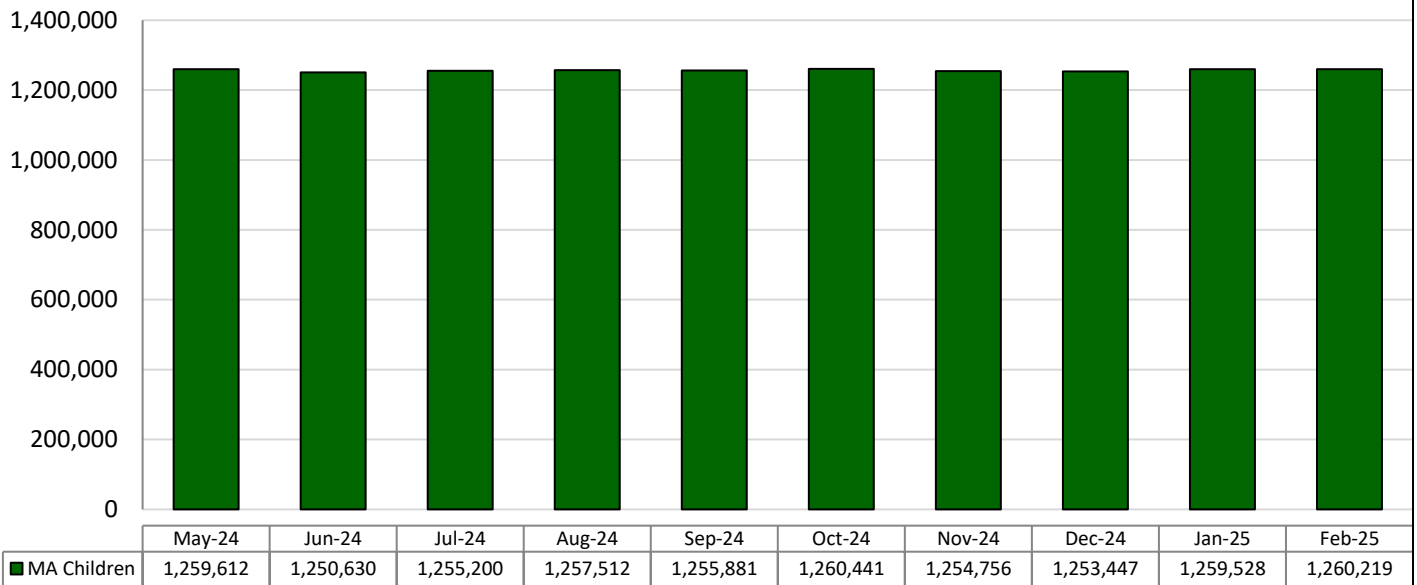
MEDICAL ASSISTANCE AND OTHER HEALTH CARE SERVICES



Data Source: DHS ListServ

NOTE: MA numbers now reflect data pulled on the second Tuesday of the month after the reported month. Previous months are not updated to show retroactive eligibility.

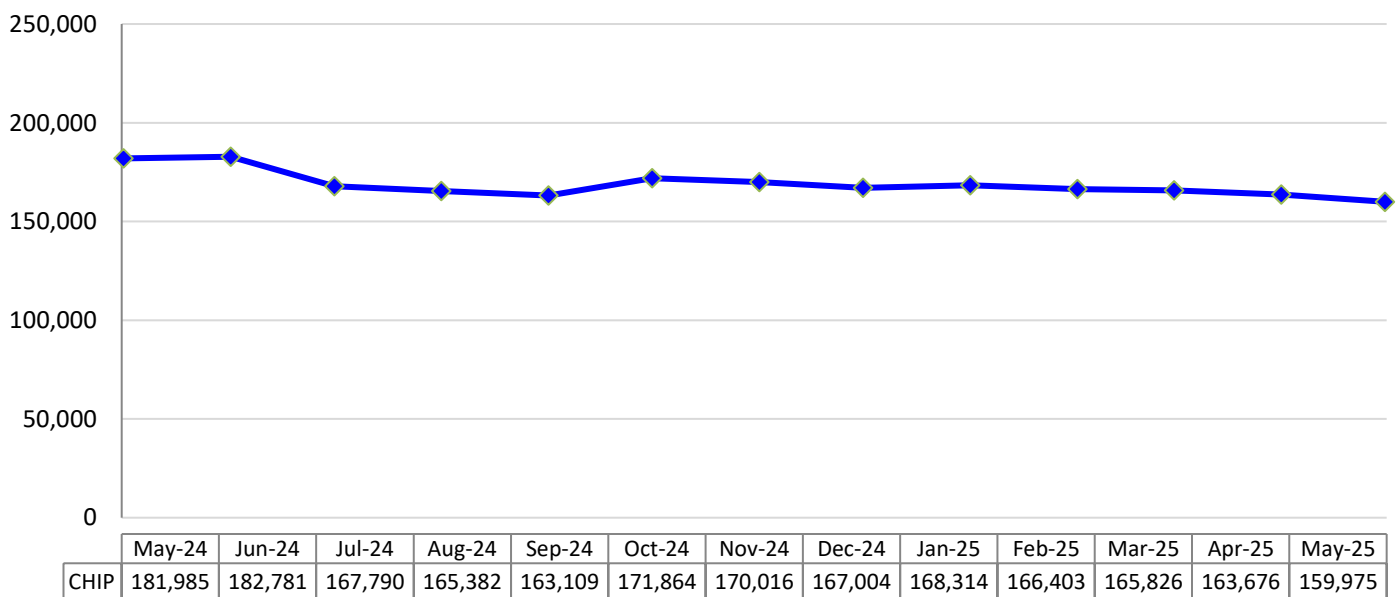
MA Children Preliminary Estimates ("children" can include persons up to 21 years old)



Data Source: DHS Data Enterprise Warehouse

Note: Children are those recipients under the age of 21. (EC (eligible child) is no longer used for determining MA children).

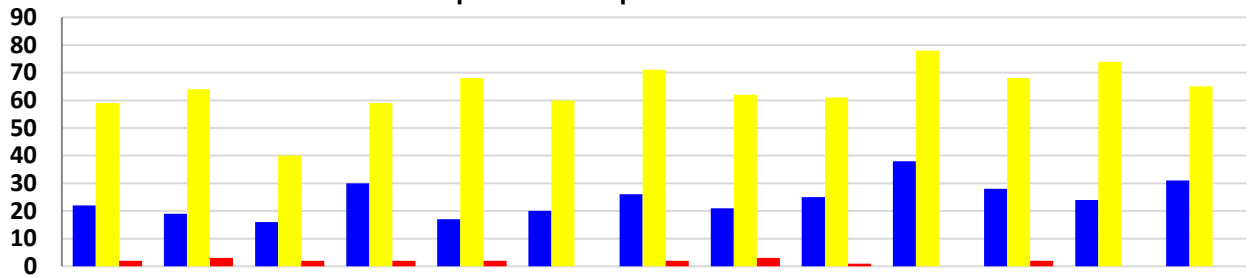
Children's Health Insurance Program (CHIP) Enrollment 12% Decrease in CHIP Enrollment From May 2024 to May 2025



Data Source: DHS Data Enterprise Warehouse

*Individuals have been deemed eligible for CHIP. They are not enrolled until they have enrolled into a Managed Care Organization (MCO)

State Hospital Admissions 16% Increase in State Hospital Admissions from April 2024 to April 2025



	Apr-24	May-24	Jun-24	Jul-24	Aug-24	Sep-24	Oct-24	Nov-24	Dec-24	Jan-25	Feb-25	Mar-25	Apr-25
Civil	22	19	16	30	17	20	26	21	25	38	28	24	31
Forensic	59	64	40	59	68	60	71	62	61	78	68	74	65
Long Term Care	<11	<11	<11	<11	<11	0	<11	<11	<11	0	<11	0	0

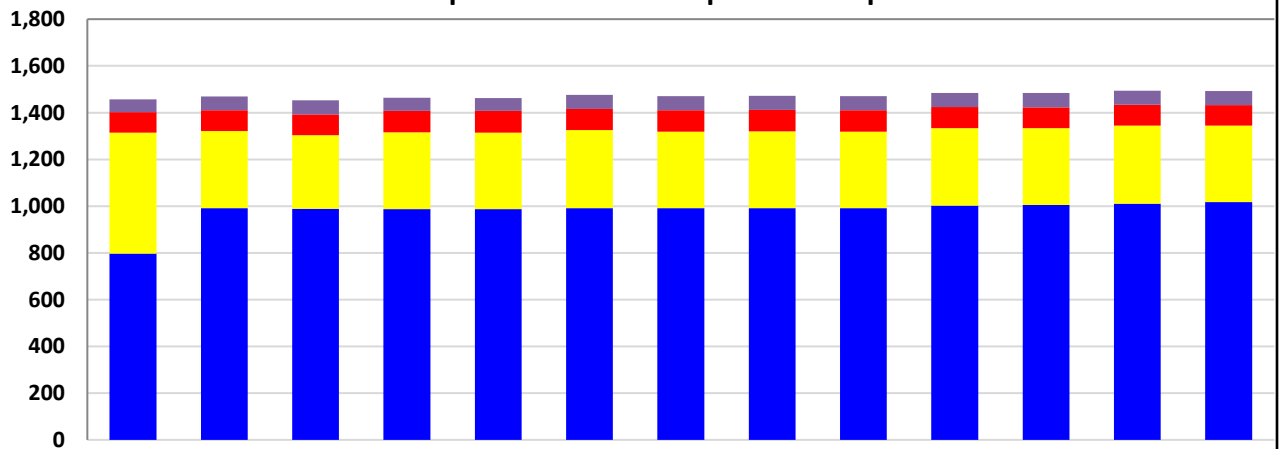
Data Source: Patient Census Information System

Civil: Unduplicated count of civil admissions of patients during the reporting month to: Clarks Summit State Hospital, Danville State Hospital, Norristown State Hospital, Torrance State Hospital, Warren State Hospital and Wernersville State Hospital.

Forensic: Unduplicated count of forensic admissions of patients during the reporting month to: Norristown State Hospital and Torrance State Hospital forensic units.

Long Term Care: Unduplicated count of admissions of patients during the reporting period to: South Mountain Restoration Center.

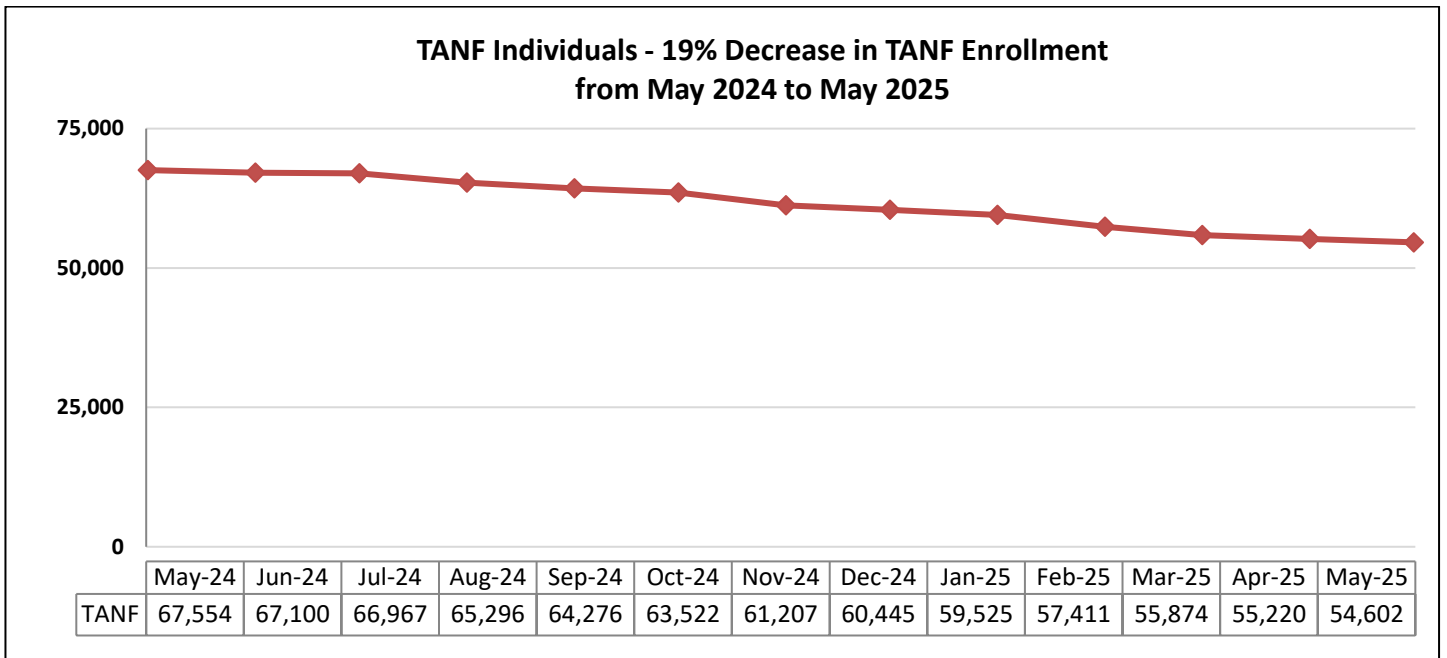
State Hospitals Census 3% Increase in State Hospital Census from April 2024 - April 2025



	Apr-24	May-24	Jun-24	Jul-24	Aug-24	Sep-24	Oct-24	Nov-24	Dec-24	Jan-25	Feb-25	Mar-25	Apr-25
Act 21	55	59	60	56	56	60	61	60	60	60	61	61	61
Long Term Care	88	88	90	92	93	91	91	92	92	90	89	89	87
Forensic	517	331	314	328	327	334	328	328	328	332	329	333	328
Civil	797	991	989	988	987	991	991	992	991	1,002	1,005	1,011	1,017

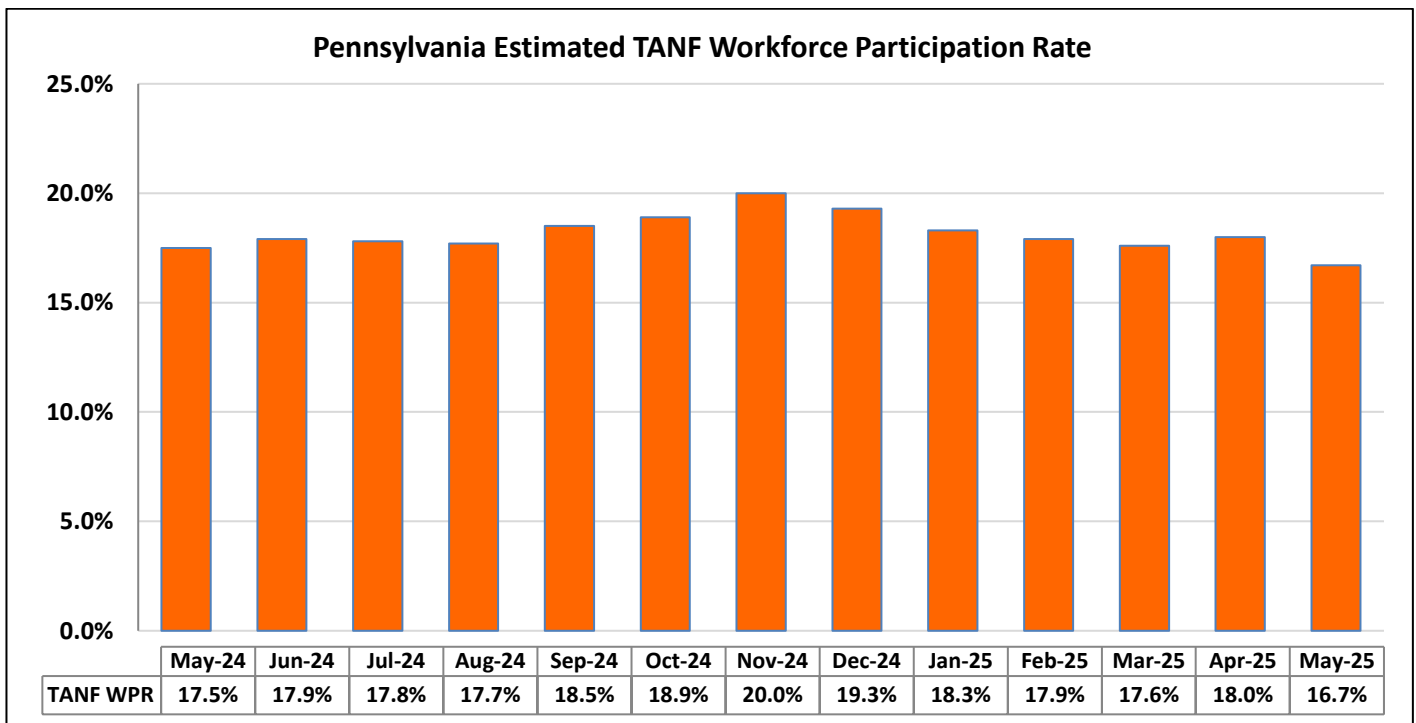
Data Source: Patient Census Information System

BENEFIT ASSISTANCE PROGRAMS FOR CHILDREN AND FAMILIES



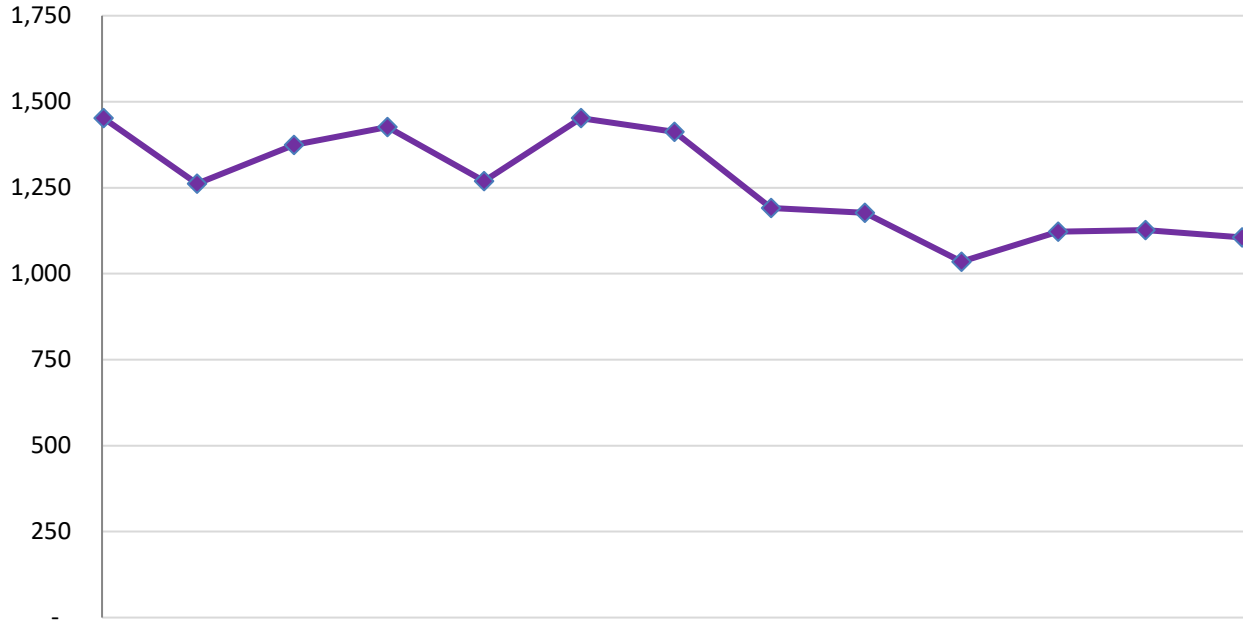
Data Source: DHS ListServ/EDW

NOTE: TANF numbers now reflect data pulled on the second Tuesday of the month after the reported month.



Data Source: TNF22 Report

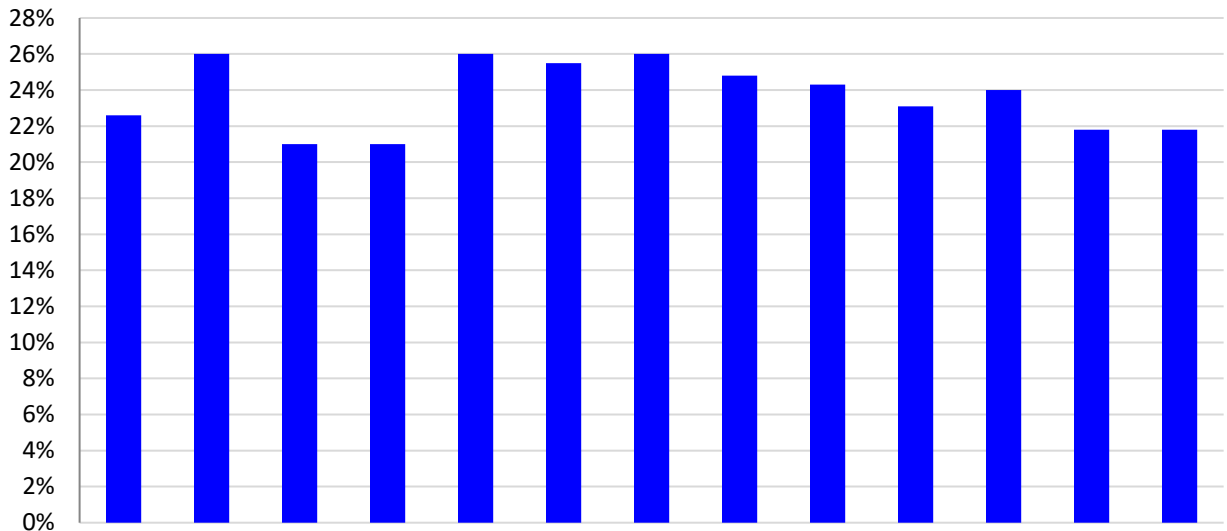
TANF Individuals that Obtain Employment
24% Decrease from April 2024 to April 2025



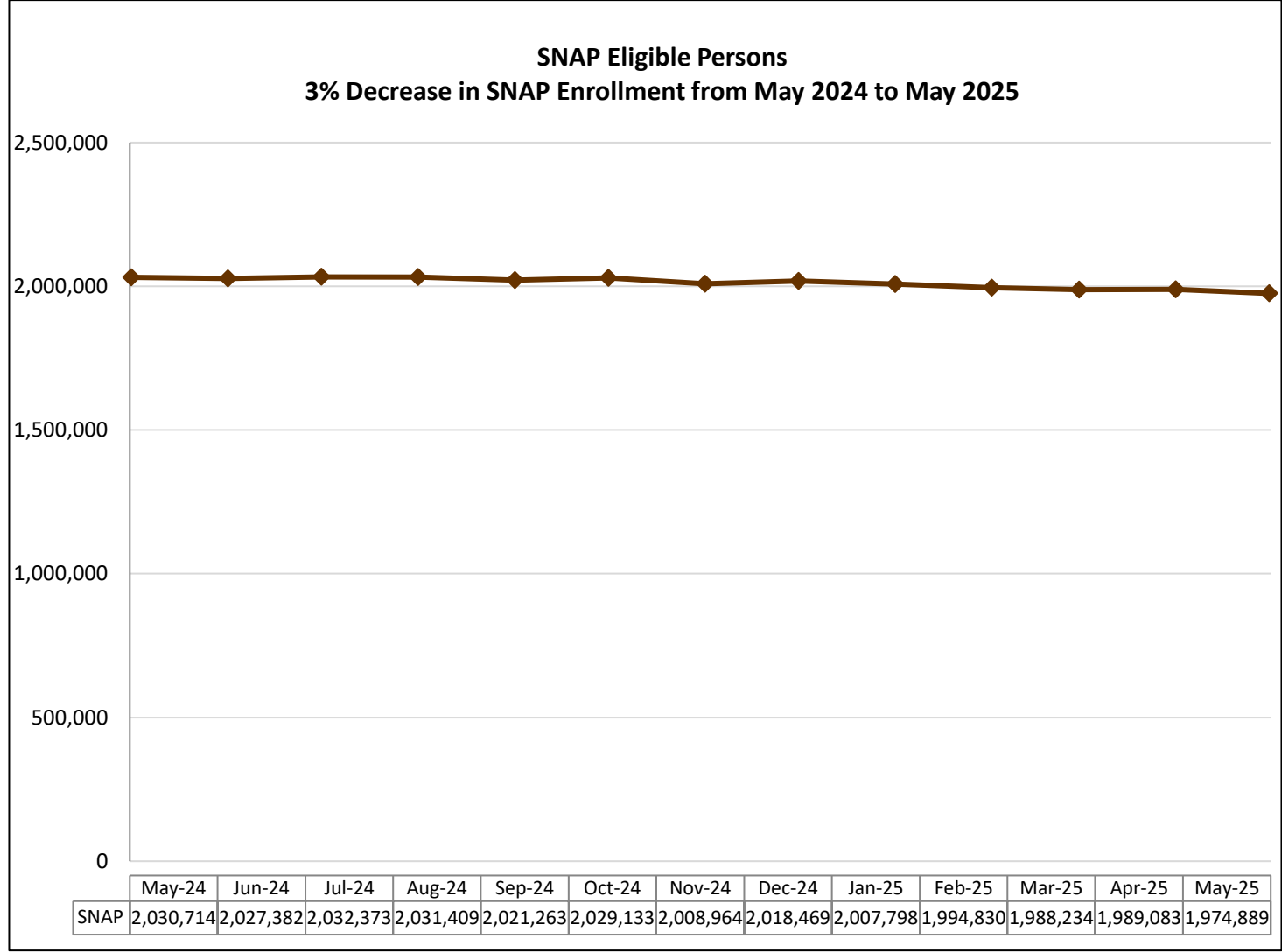
DHS Data Enterprise Warehouse

A budget is one or more related or unrelated individuals who occupy a common residence or would occupy a common residence if they were not homeless, and whose needs are considered together in determining eligibility for assistance are considered together in determining eligibility for assistance under one category of assistance.

TANF Budgets Leaving for Employment as Percent of All Budgets that Left TANF



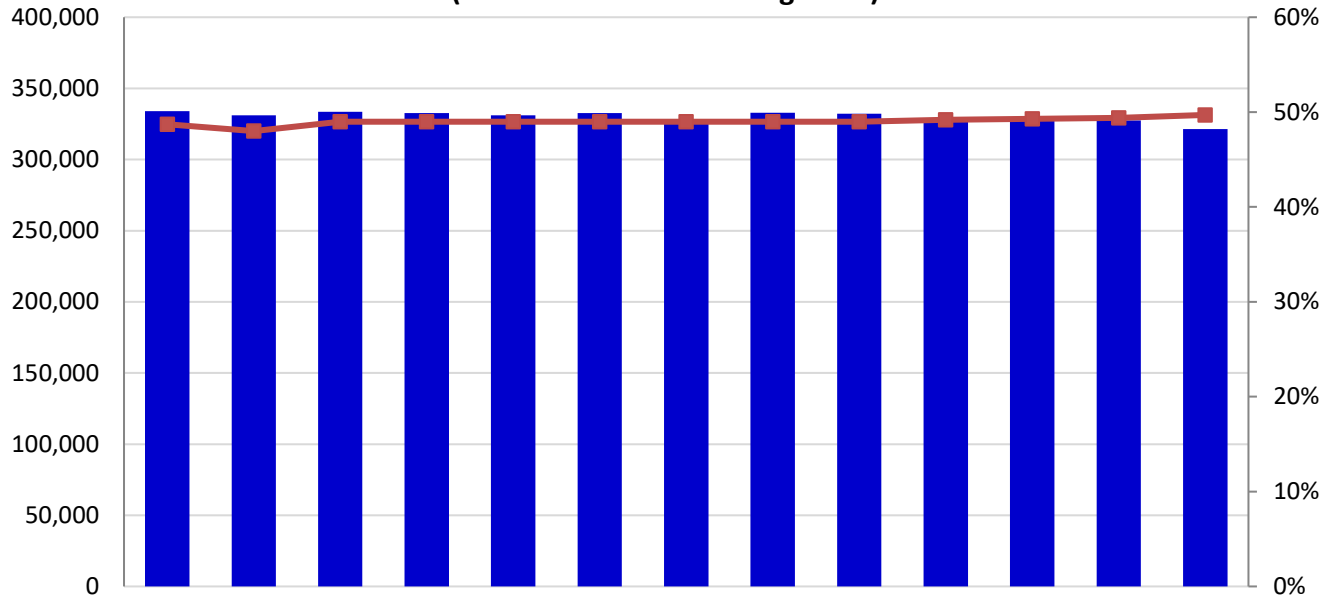
DHS Data Enterprise Warehouse



Data Source: DHS ListServ/EDW

NOTE: SNAP numbers now reflect data pulled on the second Tuesday of the month after the reported month.

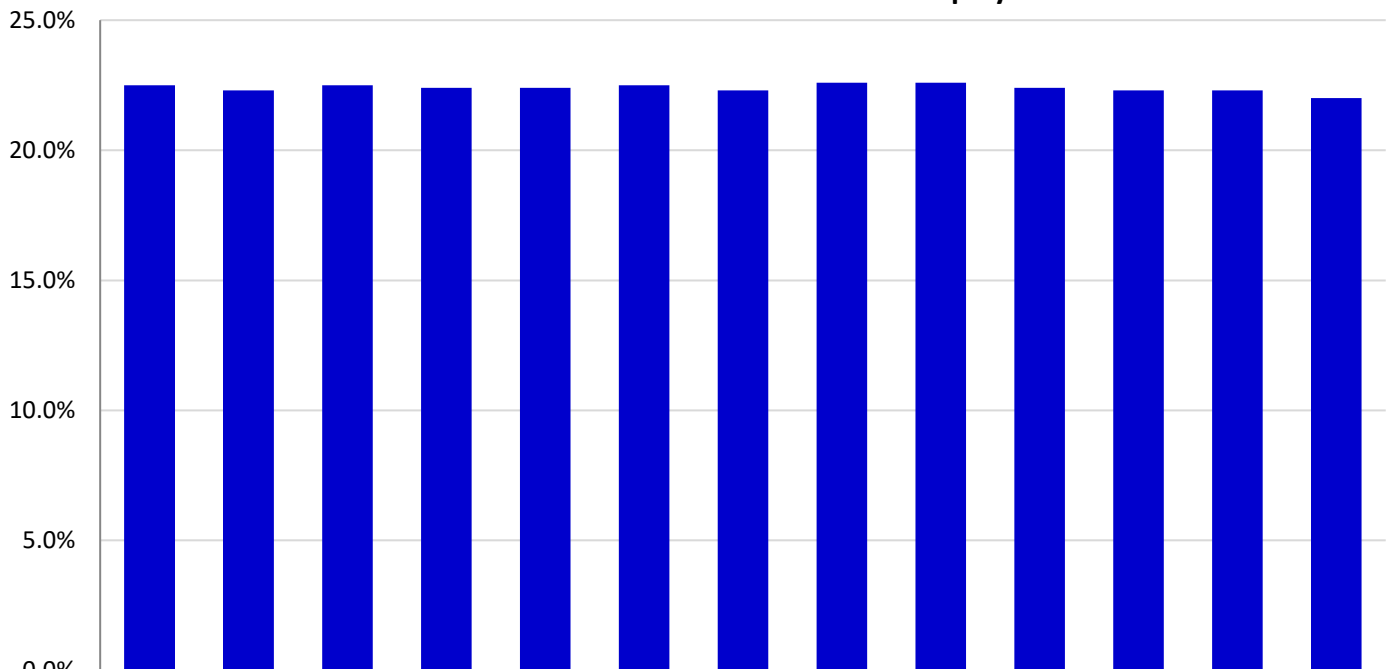
Number and Percent of Non-disabled SNAP Adults Working (Excludes Those Receiving TANF)*



*Beginning in Jan 2018, SNAP Adults working includes non-elderly only.

Data Source: DHS Enterprise Data Warehouse

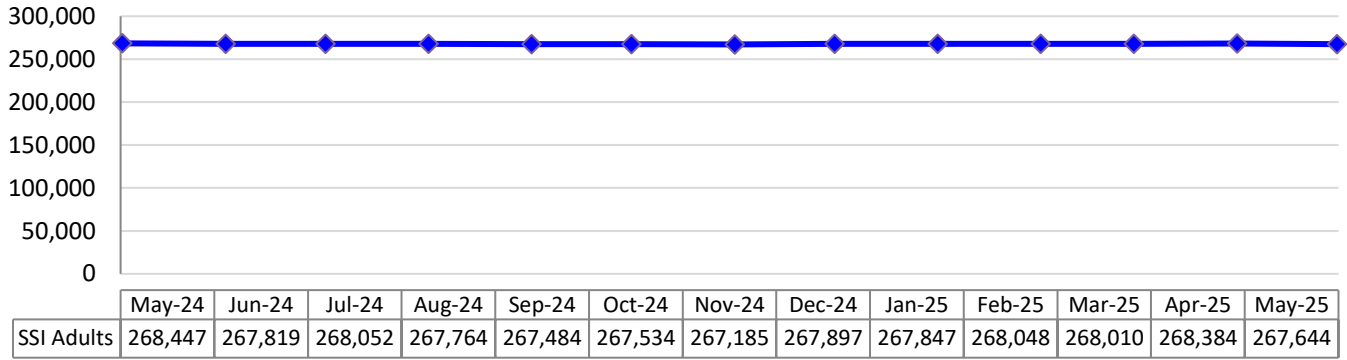
Percent of Non-disabled SNAP Adults with Full-time Employment*



*Full-time status according to CIS Employment Status Code

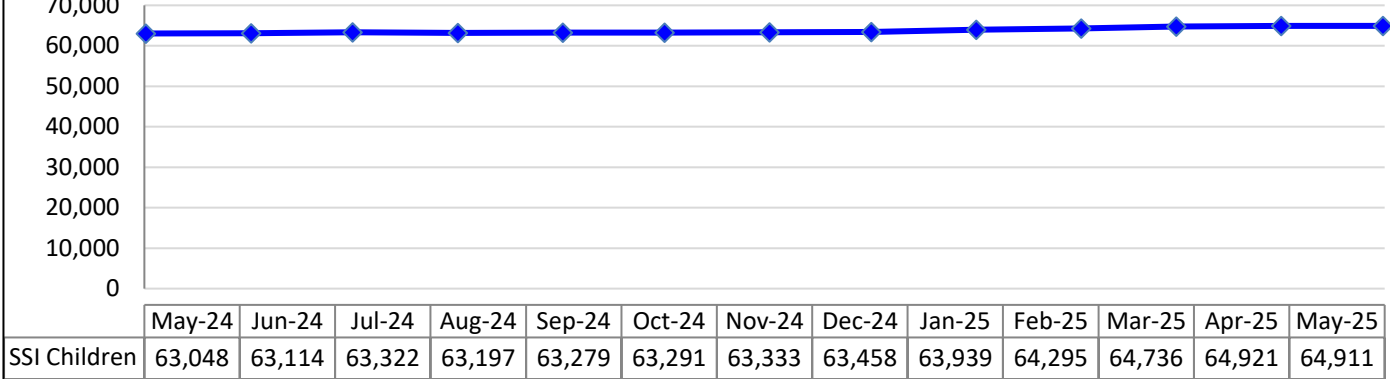
Data Source: DHS Enterprise Data Warehouse

**SSI Adults -- 0.3% Decrease in Total Adult SSI Enrollment
from May 2024 to May 2025**



Data Source: DHS Enterprise Data Warehouse

**SSI Children -- 3% Increase in Total Child SSI Enrollment
from May 2024 to May 2025**



Data Source: DHS Enterprise Data Warehouse

Child Support Measures

Child Support	Federal Target	Pennsylvania Rate												
		May 2024	Jun 2024	Jul 2024	Aug 2024	Sept 2024	Oct 2024	Nov 2024	Dec 2024	Jan 2025	Feb 2025	Mar 2025	Apr 2025	May 2025
Child Support - Cases with Paternity Establishments**	80%	103%	104%	106%	107%	108%	95%	96%	97%	99%	100%	101%	102%	104%
Child Support - Current Supports Collected	80%	83%	83%	83%	83%	83%	84%	83%	83%	83%	83%	83%	83%	83%
Child Support - Percent of Cases Paying Arrears	80%	81%	82%	83%	84%	84%	49%	56%	66%	72%	74%	78%	80%	81%
Cases with Orders	80%	92%	91%	92%	92%	92%	91%	92%	92%	92%	92%	92%	93%	93%
Cost Effectiveness (FFY)	\$5.00	FFY 2020-21: \$5.13			FFY 2021-22: \$4.80			FFY 2022-23: \$4.31			FFY 2023-24: \$3.99			FFY 2024-25: \$3.97

*Drop from September to October due to starting of new Federal Fiscal Year (compare with previous year) Data Source: OCSE Reports

CHILD WELFARE SERVICES

Category: YDC/YFC's	Current	Average
Monthly Admissions	44 (May 2025)	Rolling Year Average 38 (Feb 2024 – Jan 2025)
Level of Improvement in Life Skills from Intake to Discharge for all YDC/YFC participants completing program	12% (May 2025)	Rolling Year Average 12.4% (Feb 2024 – Jan 2025)

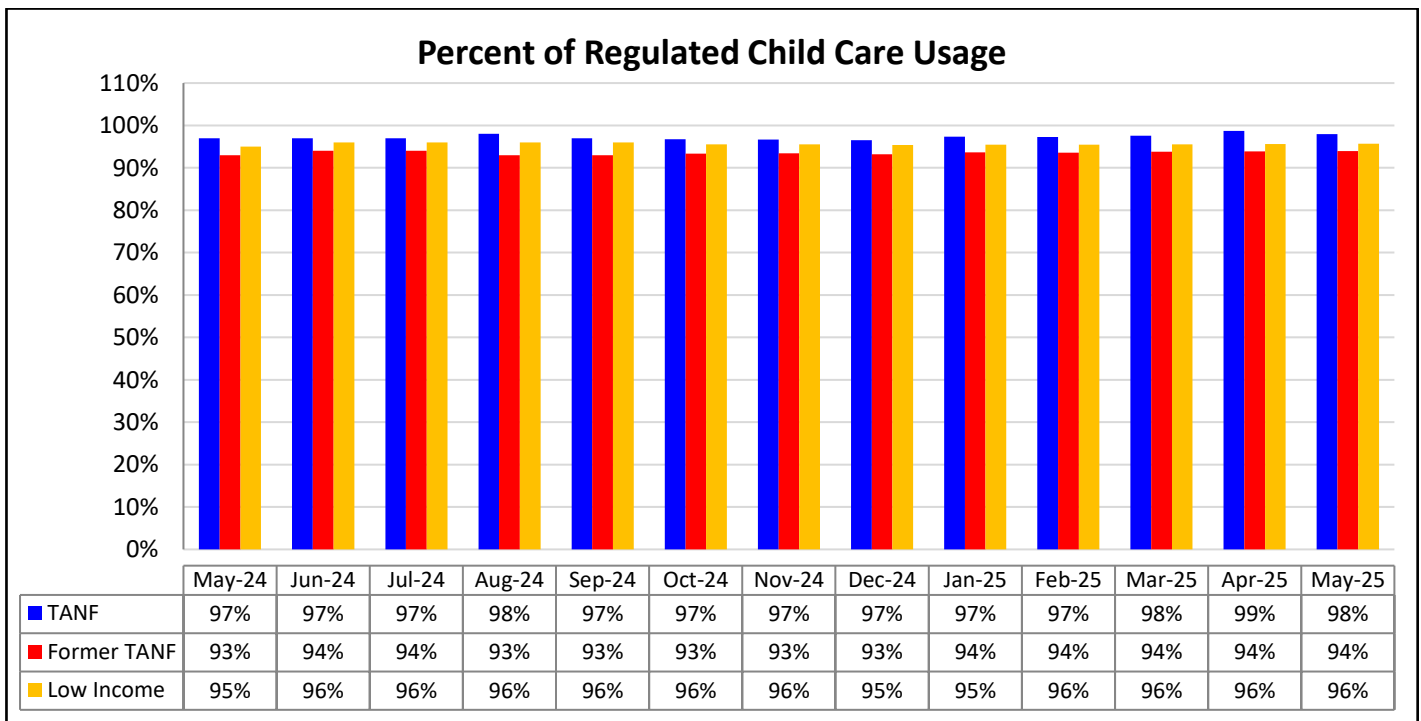
Data Source: Automatic Intake and Incident Reporting System (admissions); Ansell-Casey Life Skills Assessment (life skills)

CHILD CARE AND EARLY LEARNING SERVICES

Child Care Subsidies	Number of Children Receiving* (May 2025)	Encumbrance (May 2025)	# on Waiting List (May 2025)
TANF	3,603	77.0%	0
Former TANF	11,856	80.8%	0
Low Income	77,150	94.1%	0

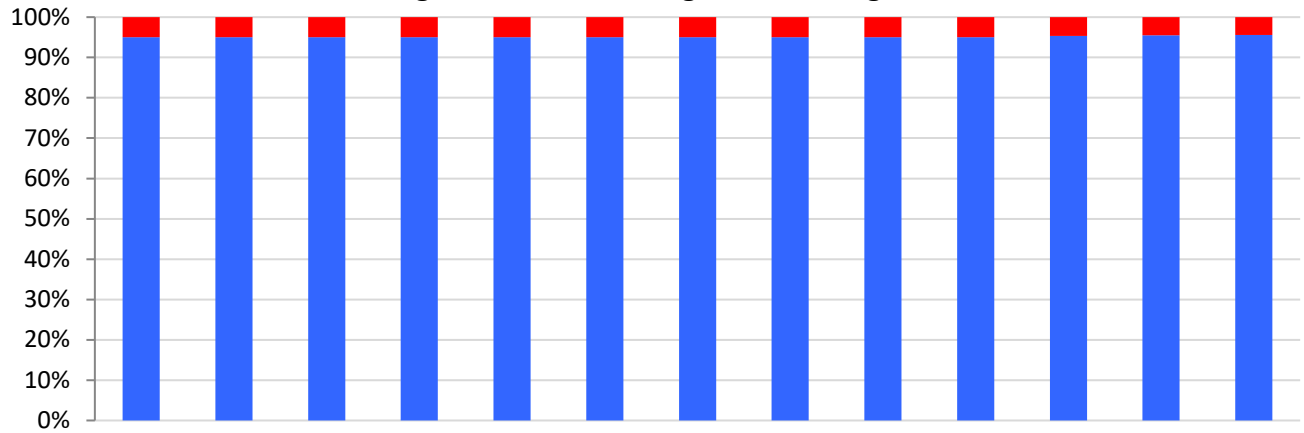
Data Sources: PELICAN CCW and PELICAN Child Care DW

*Preliminary Number – final number will be determined as additional data becomes available.



Data Source: PELICAN CCW

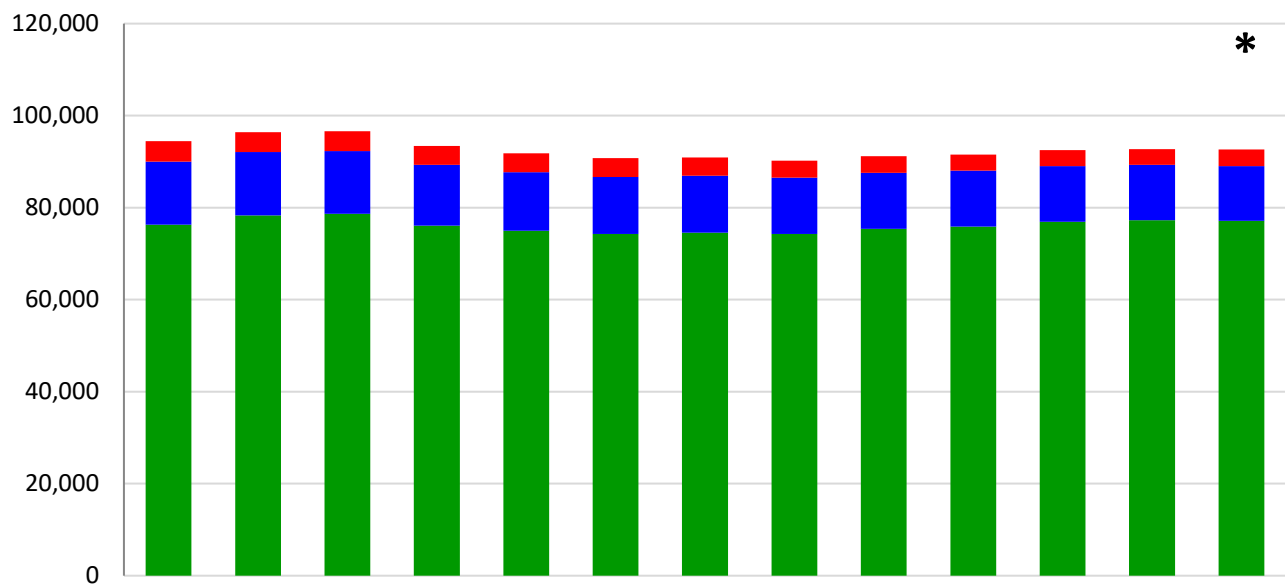
Percent of Children Receiving Subsidized Child Care in Regulated Versus Unregulated Settings



	May-24	Jun-24	Jul-24	Aug-24	Sep-24	Oct-24	Nov-24	Dec-24	Jan-25	Feb-25	Mar-25	Apr-25	May-25
■ Unregulated	5%	5%	5%	5%	5%	5%	5%	5%	5%	5%	5%	5%	4%
■ Regulated	95%	95%	95%	95%	95%	95%	95%	95%	95%	95%	95%	96%	96%

Data Source: PELICAN CCW

Children Receiving Subsidized Child Care



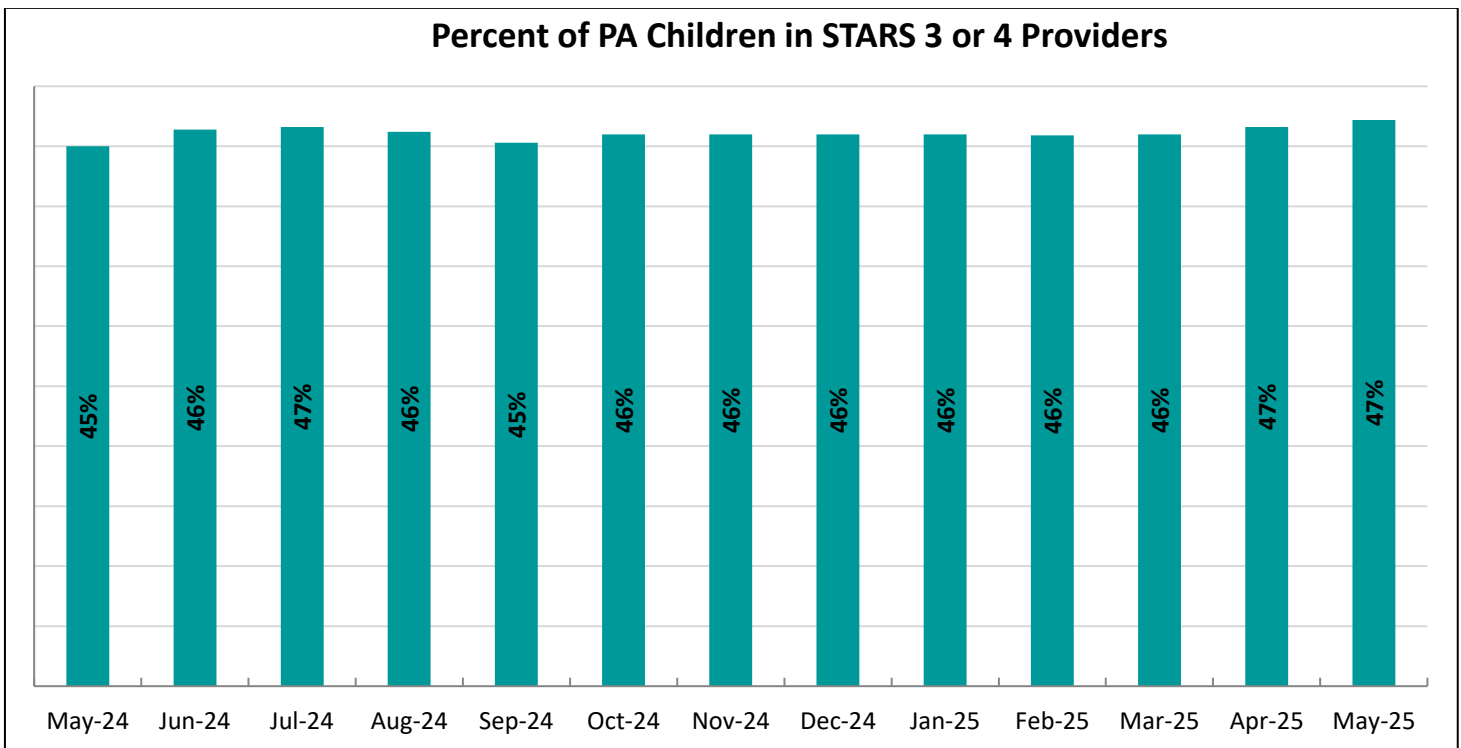
	May-24	Jun-24	Jul-24	Aug-24	Sep-24	Oct-24	Nov-24	Dec-24	Jan-25	Feb-25	Mar-25	Apr-25	May-25
■ TANF	4,440	4,364	4,322	4,097	4,097	4,096	3,988	3,710	3,602	3,465	3,498	3,435	3,603
■ Former TANF	13,671	13,737	13,638	13,253	12,736	12,404	12,339	12,238	12,209	12,124	12,083	12,022	11,856
■ Low Income	76,327	78,331	78,661	76,068	74,963	74,263	74,586	74,265	75,385	75,912	76,916	77,282	77,150

*Preliminary Numbers – final numbers will be determined as additional data becomes available Data Source: PELICAN CCW

NOTE: Beginning July 2012, number of children being served has decreased due to correction of a contractor error where children on the waiting list were being counted as receiving services.

Keystone STARS	Current	Historical
% of Keystone STARS Providers at STAR 3 or STAR 4	33% (May 2025)	33% (Apr 2025)

Data Source: PELICAN KTQ



Data Source: PELICAN CCW

Infants, Toddlers, and Families Waiver and Early Intervention (0-3)	Current	Historical
Early Intervention (0-3) Active with Plan	26,344 (May 2025)	25,895 (Apr 2025)
Early Intervention (0-3) Tracking	3,287 (May 2025)	3,318 (Apr 2025)
Children Participating in Early Intervention Services (0-3)	49,263 (2023-2024)	48,199 (2022-2023)

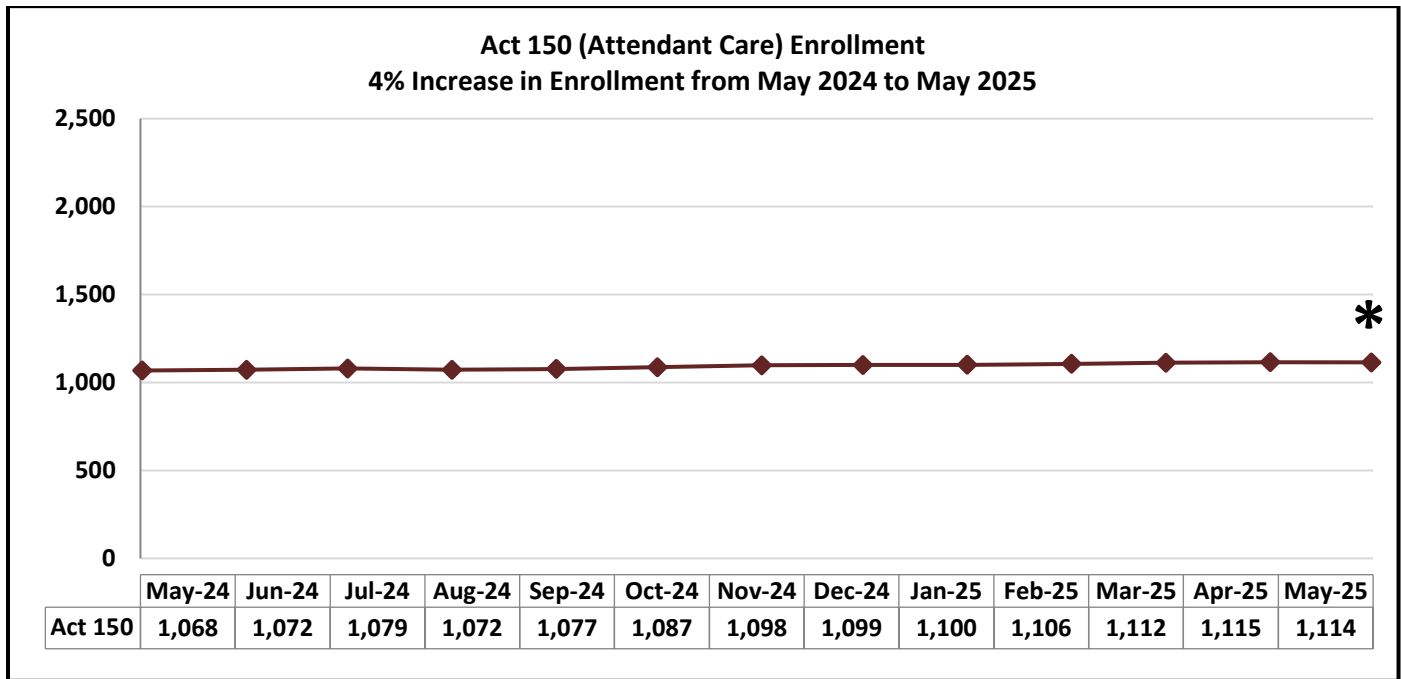
Data Sources: HCSIS DW, EI Ad Hoc Reporting Tool

Early Intervention (0-3) Active with Plan: The unduplicated total number of children aged birth to three who received early intervention services by month during the fiscal year. This count includes children with a 25% delay in one or more of the following areas: cognitive development, physical development (including vision and hearing), communication development, social or emotional development, or adaptive development (learning, movement, communication, social skills, or self-help).

Early Intervention (0-3) Tracking: The unduplicated total of children birth to three who are receive developmental screening and tracking services during each month of the fiscal year. This count includes children who are ineligible for early intervention services but who are at risk for developing a delay.

Children Participating in Early Intervention Services (0-3) - The unduplicated total number of children aged birth to three who received early intervention services during the fiscal year. This count includes children with a 25% delay in one or more of the following areas: cognitive development, physical development (including vision and hearing), communication development, social or emotional development, or adaptive development (learning, movement, communication, social skills, or self-help).

LONG TERM SUPPORTS FOR PERSONS WITH DISABILITIES AND OLDER PENNSYLVANIANS

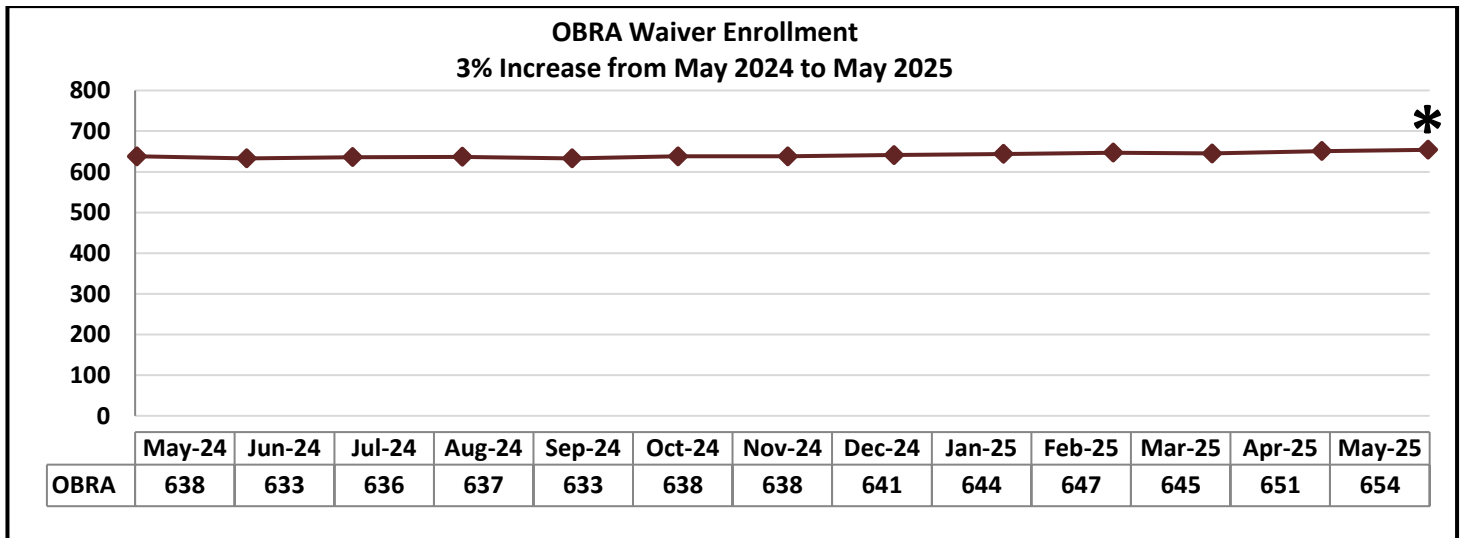


Source: DHS Enterprise Data Warehouse

***Preliminary Number – will be updated as additional data becomes available**

Data is for statewide Fee for Service enrollment only.

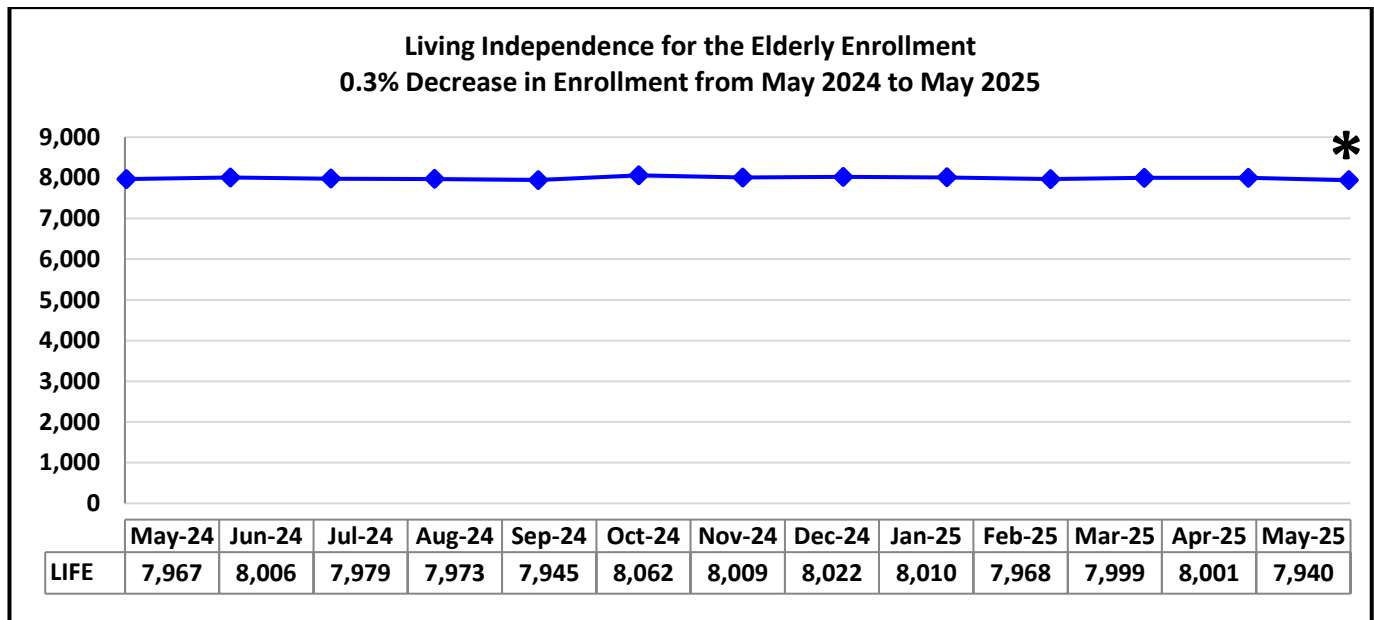
Point-in-time (last day of month) count of unduplicated participants with an Approved Service Plan in DHS's case management system. The Act 150 provides service coordination, personal assistance and personal emergency response system to individuals with physical disabilities, age 18 through 59, who are mentally alert. This waiver also provides community transition services. This is a state funded program. Participants must be NFCE but are not financially eligible for Medicaid.



Source: DHS Enterprise Data Warehouse

***Preliminary Number – will be updated as additional data becomes available**

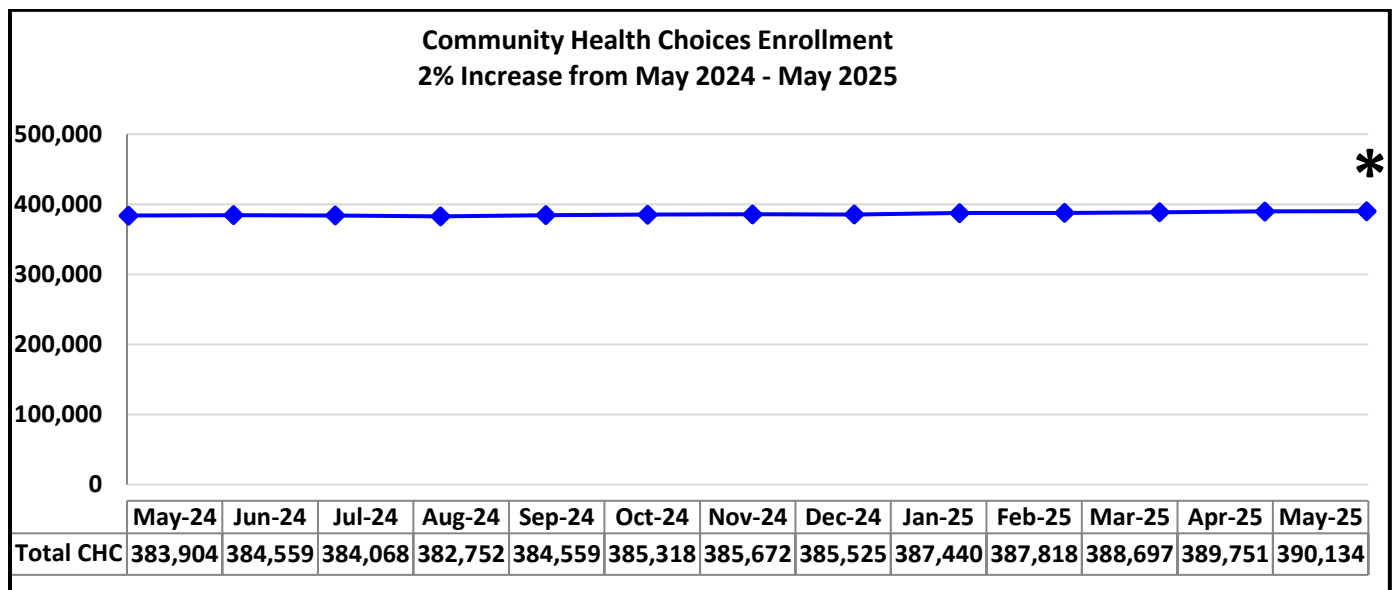
In December 2019, individuals in this waiver were reassessed and some were moved into the Community Health Choices Waiver. Point-in-time (last day of month) count of unduplicated participants with an Approved Service Plan in DHS's case management system. This waiver provides services to recipients who have developmental physical disabilities which results in at least three substantial functional limitations, age 18 through 59; disability manifested prior to age 22, and the disability is expected to continue indefinitely; requires ICF/ORC level of care.



Source: DHS Enterprise Data Warehouse

***Preliminary Number – will be updated as additional data becomes available.**

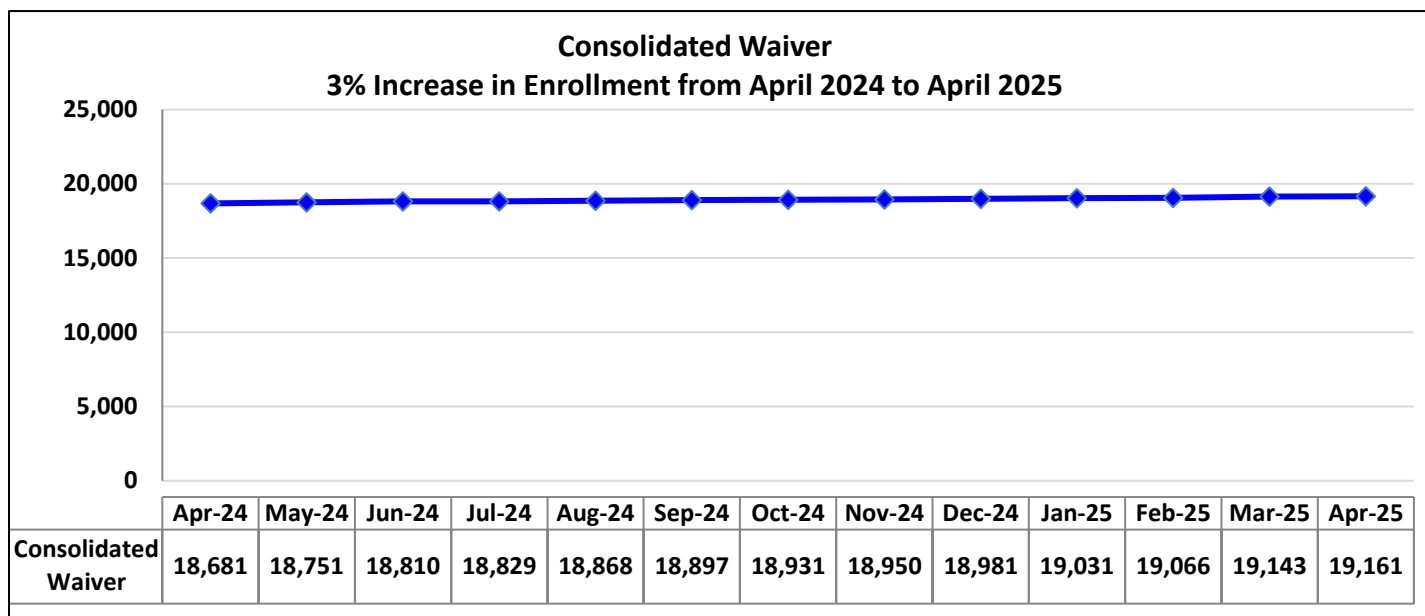
Unduplicated count of recipients which had claims in the month requested. LIFE is a managed care program and provides a comprehensive all-inclusive package of services for Pennsylvanians age 55 or older who meet the level of care needs for a Skilled Nursing Facility or a Special Rehabilitation Facility to enable them to maintain independence in their homes for as long as possible. Be age 55 or older, meet NFCE or a special rehabilitation facility, reside in an area served by a LIFE provider and be able to be safely served in the community as determined by a LIFE provider.



***Preliminary Number – will be updated as additional data becomes available**

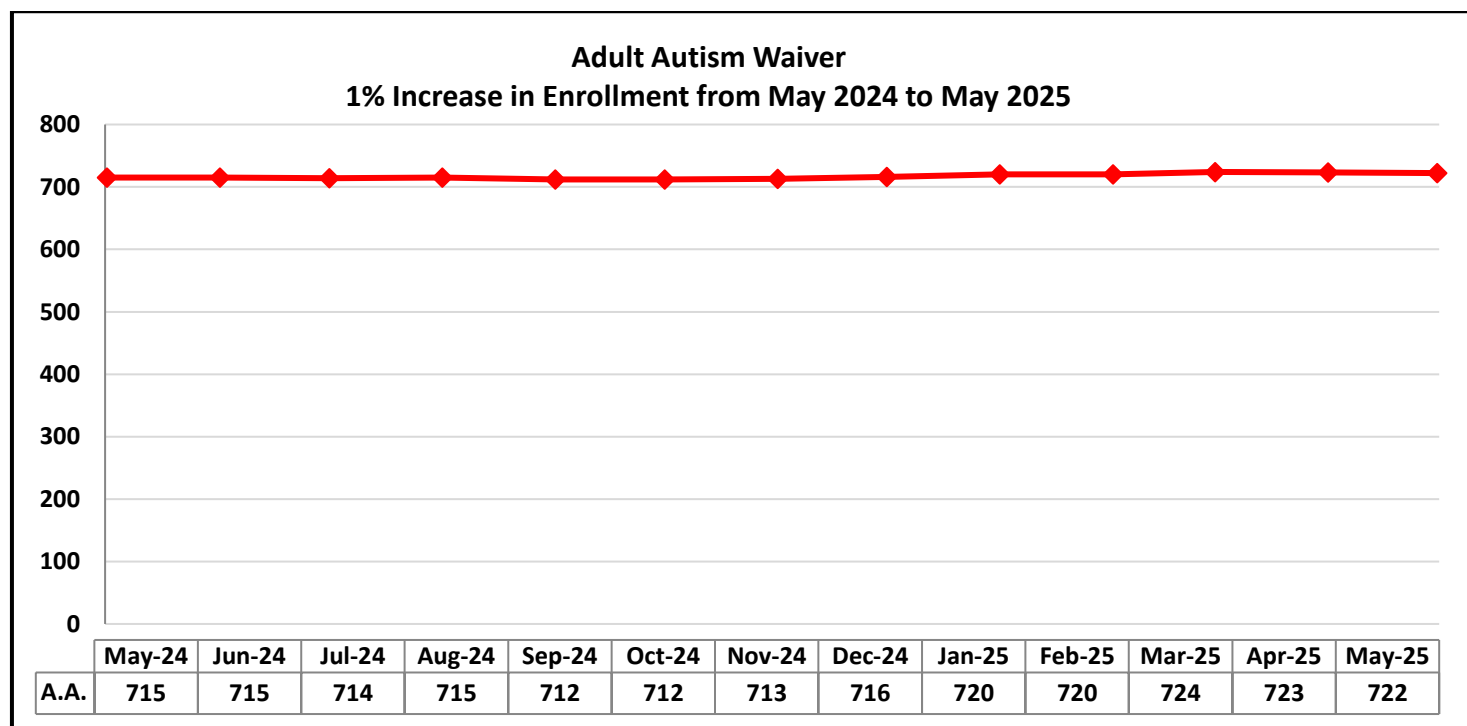
In January 2020, all counties were moved into CHC

CHC includes individuals who are 21 years of age or older and dually eligible for Medicare and Medicaid, and Individuals who are 21 years of age or older and eligible for Medicaid (LTSS) because they need the level of care provided by a nursing facility.



Source: DHS Enterprise Data Warehouse

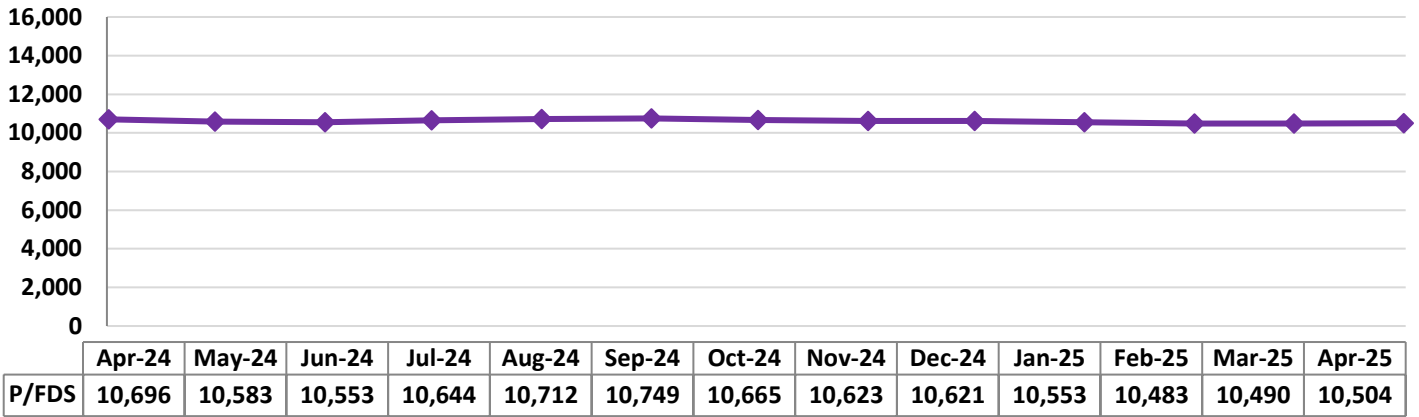
Provides home and community services, including supports coordination and environmental accessibility adaptations, for individuals with intellectual disabilities who require an intermediate care facility level of care.



Source: DHS Enterprise Data Warehouse

Provides home and community services to persons, age 21 and over, with autism spectrum disorder to help them participate in their communities.

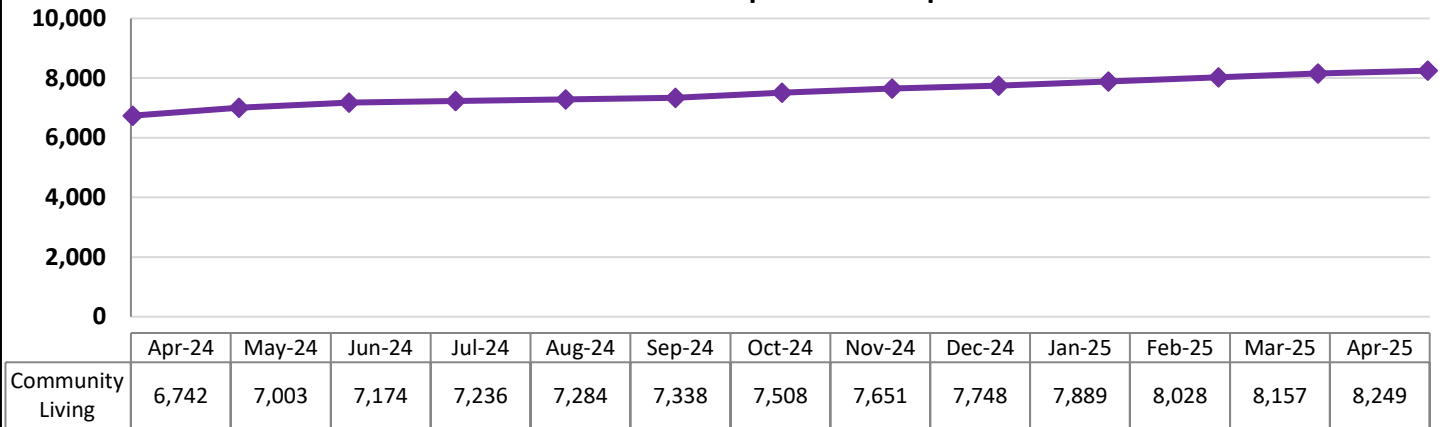
Person/Family Directed Support Waiver
2% Decrease in Enrollment from April 2024 to April 2025



Source: DHS Enterprise Data Warehouse

Provides a limited array of services and supports, such as therapy and nursing and personal support, to individuals with intellectual disabilities who require an intermediate care facility level of care. Aimed primarily at those residing in their homes or with family members.

Community Living Waiver
22% Increase in Enrollment from April 2024 to April 2025



Source: DHS Enterprise Data Warehouse

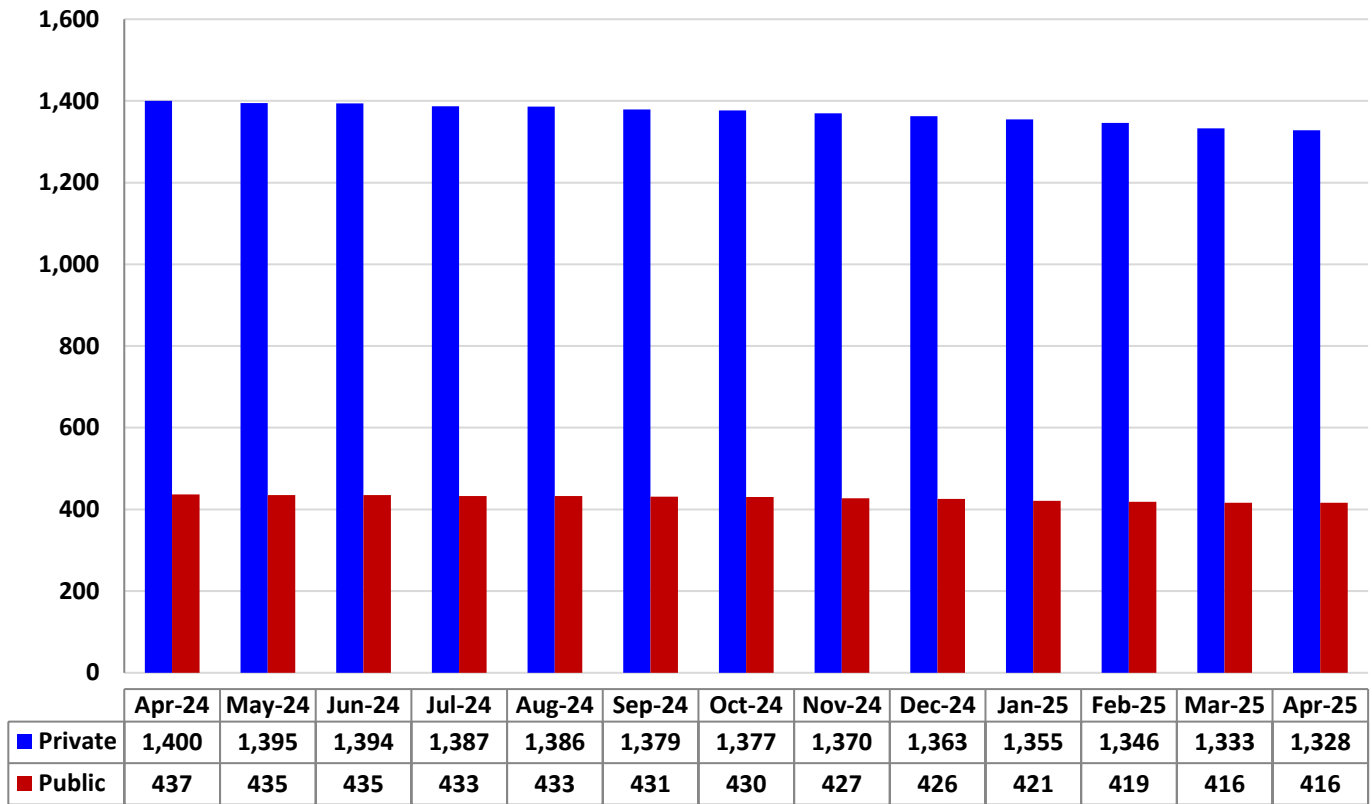
The Community Living Waiver is a new waiver that became effective in January 2018. It will support individuals to live more independently in their homes and communities through the provision of a variety of services that promote community living, employment, communication, self-direction, choice and control.

Residents in Intermediate Care Facilities for Persons with Intellectual Disabilities

(Last Day of Month)

Private ICFs/ID: 5% Decrease in Enrollment from Apr 2024 to Apr 2025

Public ICFs/ID: 5% Decrease in Enrollment from Apr 2024 to Apr 2025



Source: DHS Enterprise Data Warehouse and Mapper/FACT system

OTHER METRICS

Third Party Liability

	Previous Month	Current Month	FYTD
Recoveries (Casualty, Estate, Health Insurance and HMS)	\$17,639,376 (Feb 2025)	\$19,785,132 (Mar 2025)	\$156,723,459
Cost Avoidance (HIPP and Health Insurance)	\$17,537,945 (Feb 2024)	\$19,372,446 (Mar 2025)	\$164,299,655

Data Source: TPL Financial Accounting System

Bureau of Program Integrity

	Current Month	FYTD
Recipient Restriction Cost Avoidance*	\$337,500 (Mar 2025)	\$3,313,800

Data Source: DHS Executive Dashboard