

# **Medical Assistance Advisory Committee (MAAC)**

## **Office of Developmental Programs Overview**

February 26, 2026

# Overview

- **ODPs Mission and Organizational Structure**
- **Our values embedded into “Everyday Lives”**
- **Home and Community-Based Services and Waivers**
- **System Structure**
  - Administrative Entities
  - Supports Coordination Organizations
  - Providers
- **Eligibility criteria, PUNS, and the Waiting List**
- **Current Initiatives:**
  - Multi Year Program Growth Strategy (end the Adult Em WL)
  - Community Participation Supports Workgroup
  - Performance-Based Contracting
  - Supportive Housing Pilot
- **Resources**



Pennsylvania  
Department of Human Services

# ODP Mission, Structure, and “Everyday Lives”

The mission of the Office of Developmental Programs (ODP) is to support Pennsylvanians with developmental disabilities (*and their families*) to achieve greater **independence**, **choice** and **opportunity** in their lives.

ODP's Mission

# Information Sharing & Advisory Committee (*ISAC*)

- ODP's stakeholder advisory committee
- Majority of membership is self-advocates or family members
- Serves as ODP's quality council
- Subcommittees
  - Housing
  - Provider Performance Review



# An Everyday Life...Everyday Lives Recommendations



1. Assure effective communication
2. Promote self-direction, choice and control
3. Increase employment
4. Support families throughout the life span
5. Promote health, wellness and
6. Support people with complex needs
7. Develop and support qualified staff
8. Simplify the system
9. Improve quality
10. Expand options for community living
11. Increase community participation
12. Provide community services to everyone
13. Innovations follow Everyday Lives Principles
14. Promote Racial Equity



# ODP Population: Characteristics

- Diagnosis of intellectual disability, Developmental Disability or autism, any age, developmental disability birth through age 8; children with complex medical conditions, and
- Level of care for an intermediate care facility
- Impairments in adaptive behavior: substantial functional limitation in three or more of the following areas of major life activity:
  - self-care,
  - receptive and expressive language,
  - learning,
  - mobility,
  - self-direction,
  - capacity for independent living
- Significant need for supervision and safety related support
- Eligibility birth through death, intellectual disability and/or autism
- Lifelong services for basic health and safety, life sustaining support, improved function, integration, independence and quality of life

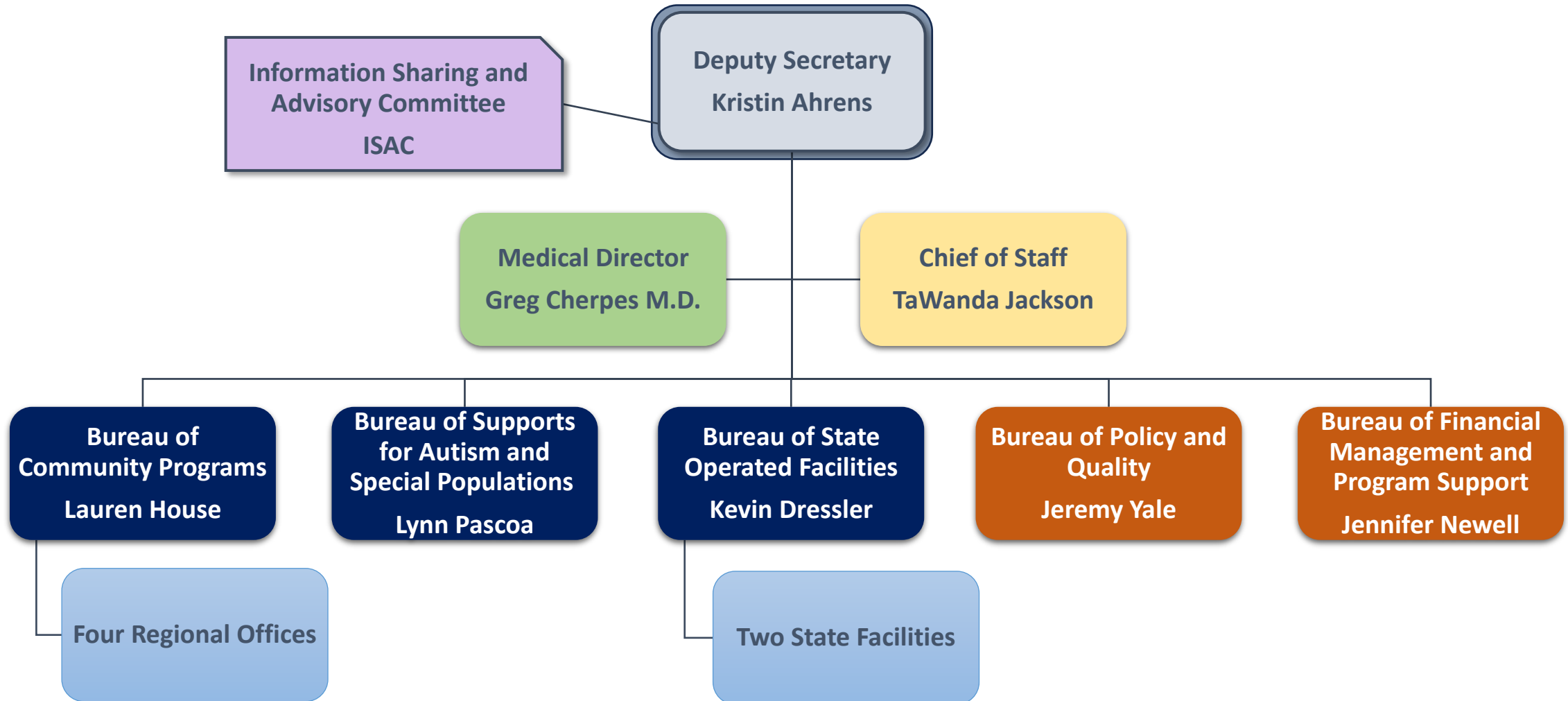


# ODP Basics

- 62,000 people enrolled for services
  - of all ages with intellectual disability, autism
  - children with medically complex conditions
- Services Administration
  - Medicaid Home and community-based services (HCBS)
  - Medicaid Target Supports Management
  - Base (state funded) HCBS
  - Intermediate Care Facility (ICFs) – Medicaid funded public and privately operated



# Office of Developmental Programs: Table of Organization



# Shift in Service Delivery – Building Community Services

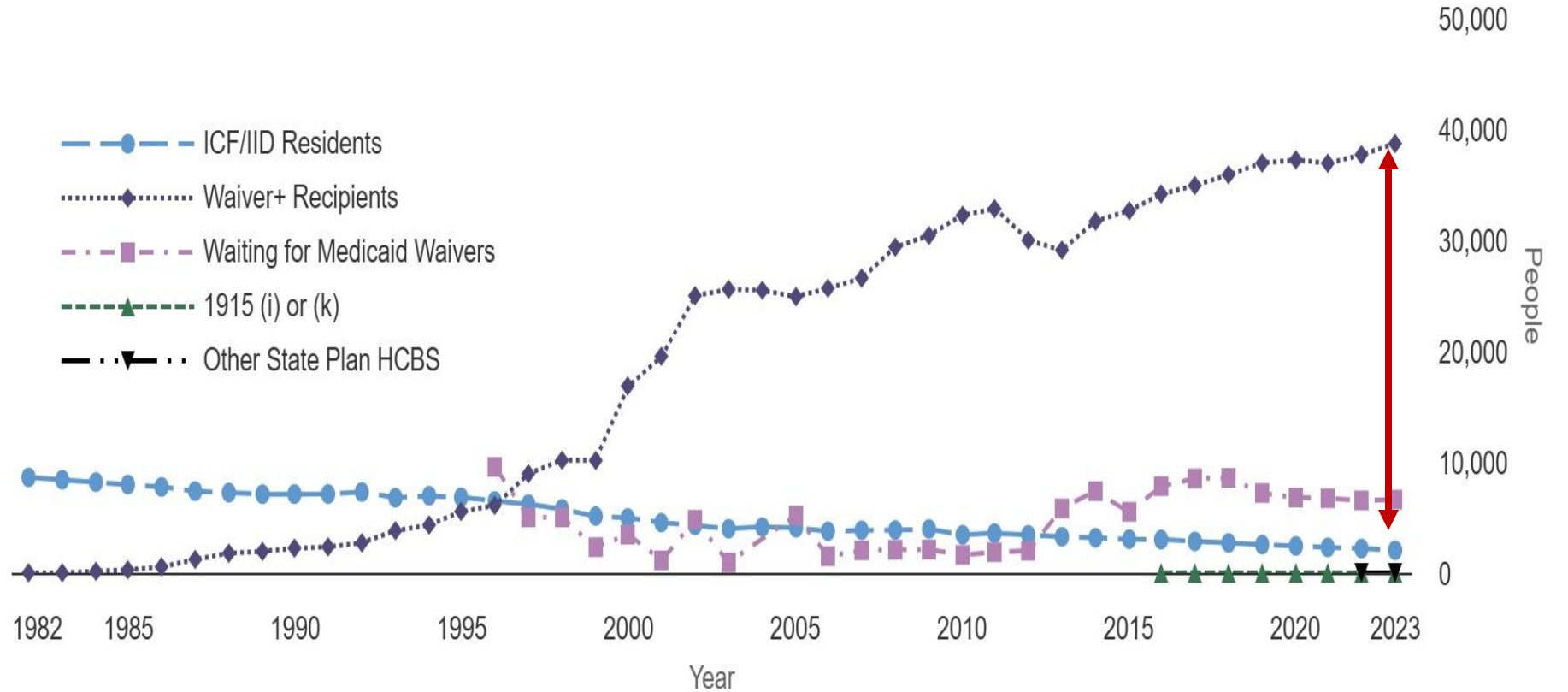
Medicaid Recipients by Funding Authority 1982 through 2023

**1966  
MH/ID Act**

13,600 in public institutions  
1,483 private institutions  
0 community services

**FY2024-2025**

413 in public institutions  
1,559 in private institutions  
58,825 in community services



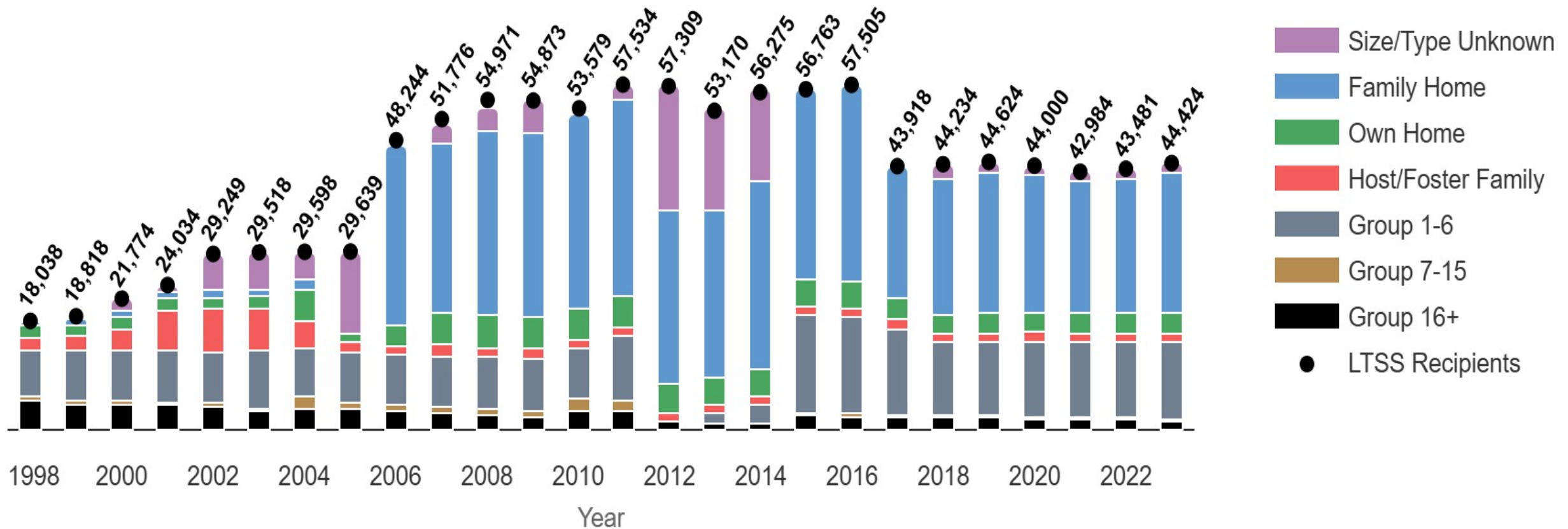
Residential Information Systems Project (RISP) at the University of Minnesota



Waiver: 1115; 1915 (a) (b) (b/c); 1915 (c). Family is Family Home, Other is own home, host or foster family, or group homes.  
ICF: Intermediate Care Facility for Individuals with Intellectual Disabilities (ICF/IID).



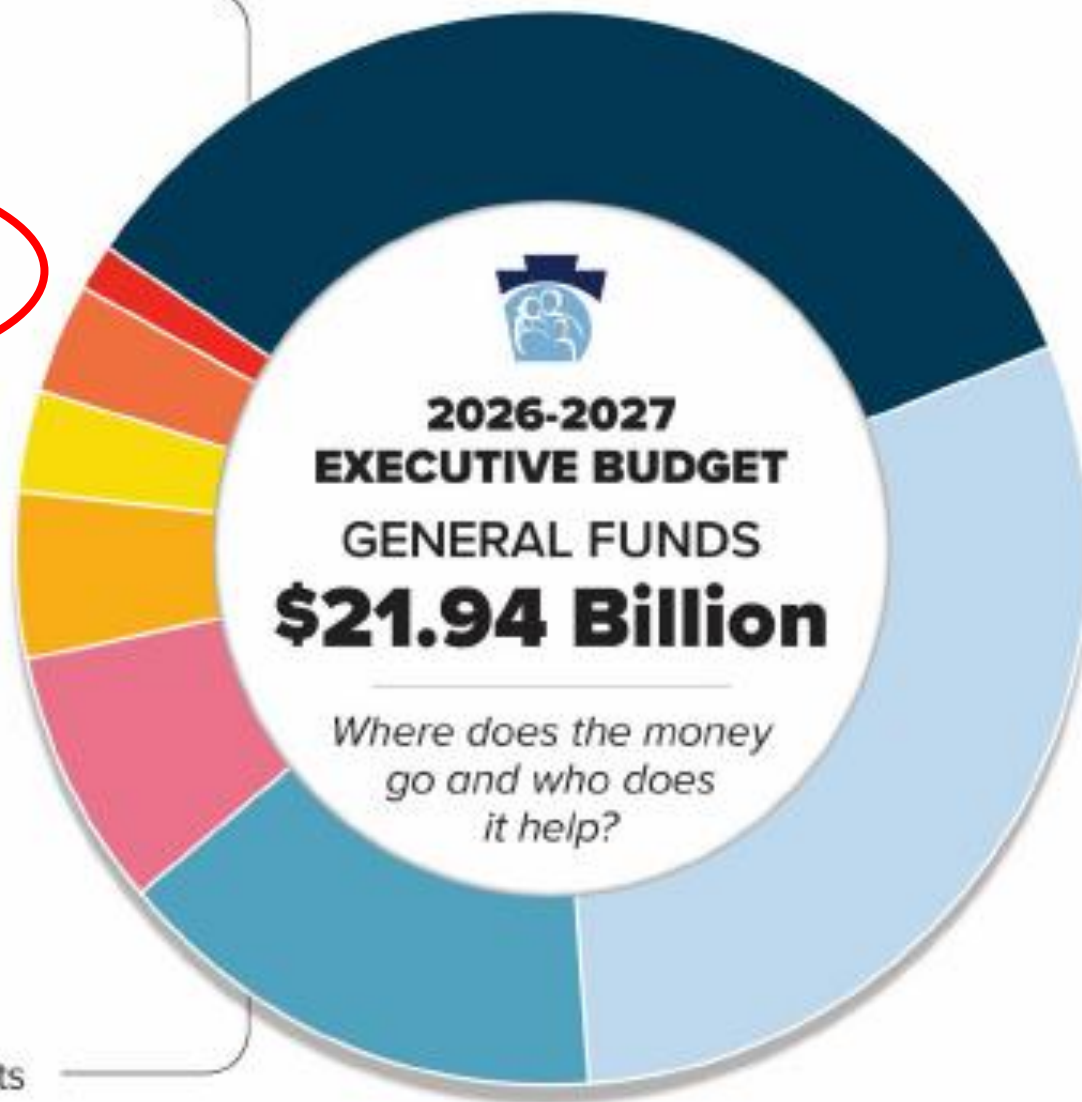
## Long Term Supports and Services Recipients with IDD by Residence Type and Year



Residential Information Systems Project (RISP) at the University of Minnesota

## Projected Spending Across DHS

- \$7.61 billion**  
Long-Term Living
- \$6.57 billion**  
Medicaid/Healthcare
- \$3.28 billion**  
Intellectual Disabilities/  
Autism Services (ID/A)
- \$1.73 billion**  
Human Services &  
County Child Welfare
- \$1.06 billion**  
Mental Health &  
Substance Abuse
- \$720 million**  
Income Maintenance
- \$702 million**  
Child Development
- \$274 million**  
Human Services Supports



DHS Budget  
State Funds  
Only



Pennsylvania  
Department of Human Services

# System Overview

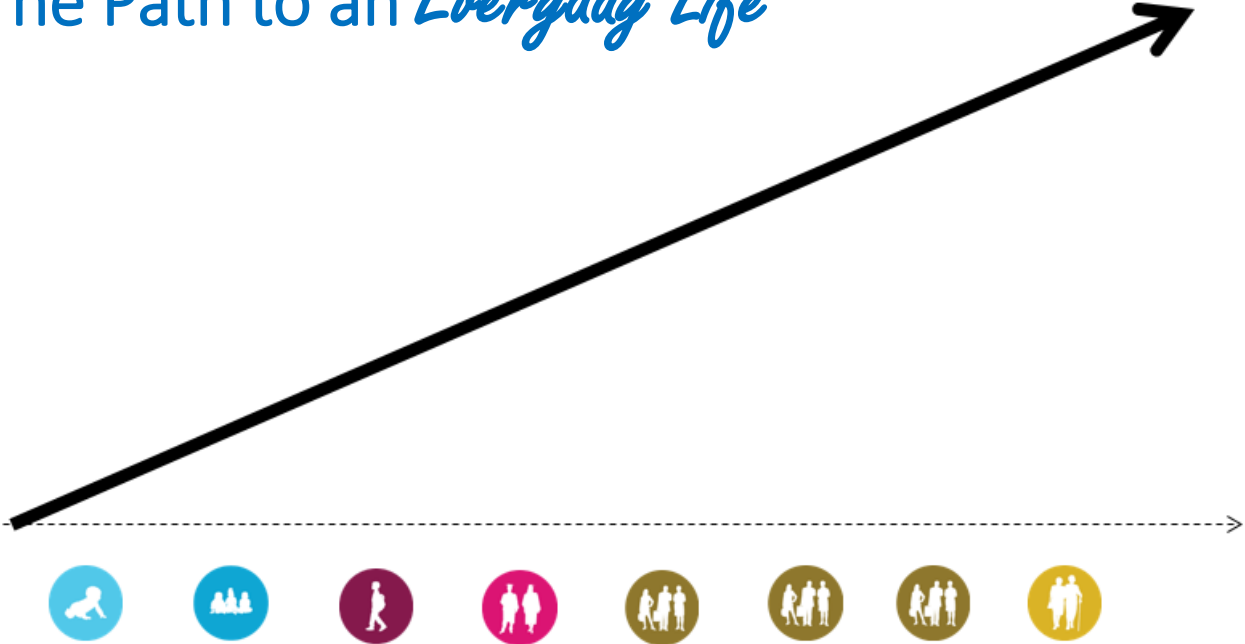
# ODP System Overview



# Life Stages and Trajectory Toward the Good Life

Life Course Thinking

The Path to an *Everyday Life*



What is my vision  
of an everyday  
life?

What do I know I  
DON'T want?



Pennsylvania  
Department of Human Services

# Home and Community-Based Services

# ODP's Waivers – People Served



Waiver	Consolidated	Person/Family Directed Supports	Community Living	Adult Autism Waiver
Population Served	Intellectual Disability (any age)	Intellectual Disability (any age)	Intellectual Disability (any age)	
	Autism (any age)	Autism (any age)	Autism (any age)	Autism (21 and older)
	Developmental Disability (age 0 to 8)	Developmental Disability (age 0 to 8)	Developmental Disability (age 0 to 8)	
	Medically Complex Condition (age 0-21)	Medically Complex Condition (age 0-21)	Medically Complex Condition (age 0-21)	
Number of People Served (24/25)	<b>20,000</b>	<b>13,400</b>	<b>9,000</b>	<b>750</b>

# ODP's Waivers – Annual Limits



Waiver	Consolidated	P/FDS	Community Living	Adult Autism Waiver
<b>Annual Limit on Services</b>	None	\$47,000	\$97,000	None
<b>Excluded from annual limit (Cap)</b>		Supports Coordination and Supports Broker	Supports Coordination	
<b>Employment</b>		Additional \$15,000 for Supported Employment or Advanced Supported Employment		

# Home and Community Based Waiver Services

- American Sign Language (ASL) — English Interpreter services
- Behavioral Support/Behavioral Specialist
- In-Home and Community Support/Community Support
- Community Participation Support/Day Habilitation
- Residential Habilitation and Life Sharing
- Respite
- Employment Services
- Supports Coordination
- Therapies
- Assistive Technology
- Home and Vehicle Modifications
- Shift Nursing (only in the ID/A waivers)

2/26/2026





Pennsylvania  
Department of Human Services

# Eligibility Criteria and Waiting List Management

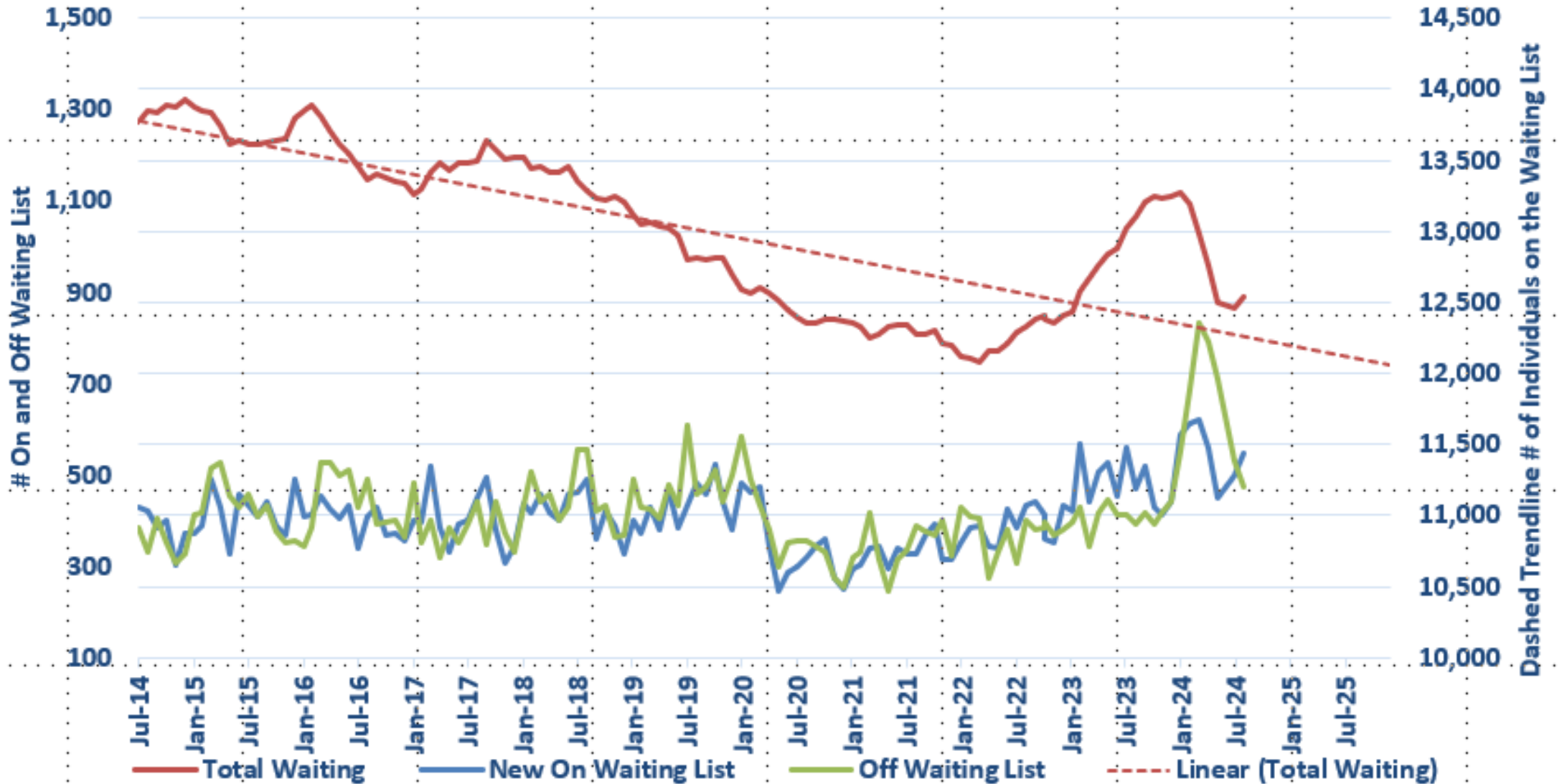
# General Eligibility Requirements



1. Program Eligibility Must have a diagnosis of one of the following:
  - Intellectual disability with a full scale IQ of 70 or below that occurred prior to the age of 22
  - Autism diagnosis based on diagnostic tools that occurred prior to the age of 22
  - Developmental disability between age 0 through 8 with a high probability of an intellectual disability or autism
  - Medically complex condition between age 0 through 21 with a current medical evaluation from a licensed medical provider
2. And also have:
  - Substantial adaptive skill deficits in 3 or more of these major life activities: self-care, understanding and use of receptive and expressive language, learning, mobility, self-direction, capacity for independent living
  - Intermediate care facility (ICF) level of care
3. Medicaid eligibility



## Number of Individuals ALL AGES On and Off the Waiting List Compared to Number of Individuals on the Waiting List





## Priority of Urgency of Need for Services (PUNS)

- The PUNS was developed to gather information in order to categorize the needs of individuals who have requested services.
- The PUNS form determines the urgency of need for services.
- The PUNS includes three categories of need: Emergency, Critical and Planning
- The PUNS provides a way to collect information that the County/Administrative Entity and ODP use to develop budget requests
- The PUNS is completed by the Supports Coordinator and includes an individual's team.



Pennsylvania  
Department of Human Services

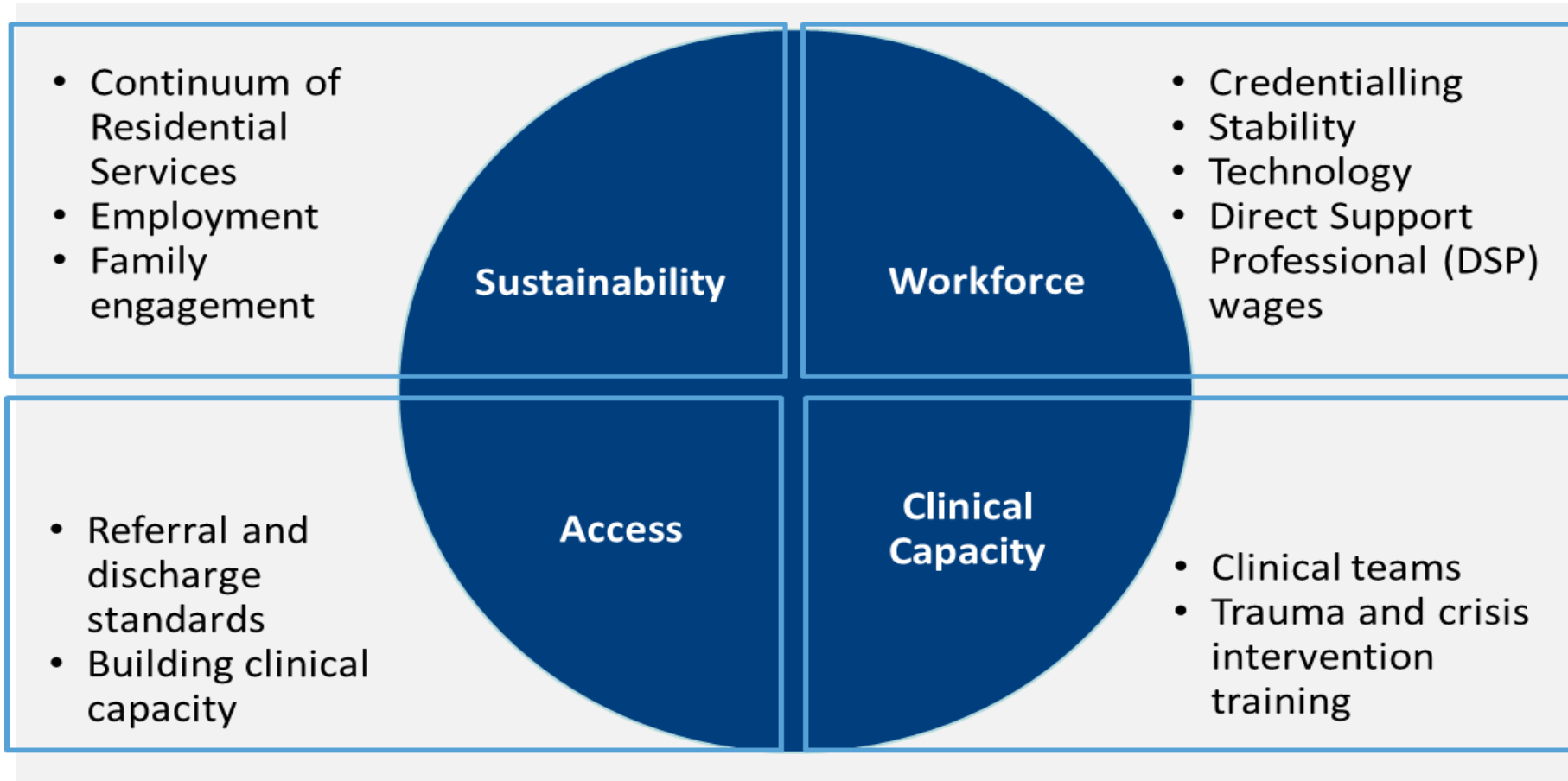
# Current Initiatives

# Multi-Year Program Growth Strategy

- February 2024, the Shapiro Administration announced the ODP Multi-Year Program Growth Strategy aimed at eliminating the emergency waiting list for adults.
- Program expansion will be accomplished through
  1. **adding waiver capacity** to the Community Living and Consolidated waivers
  2. **altering the management** of waiver capacity in order to serve more people.
- Launch coupled with supplemental payment and Governor's proposed budget for \$214M in rate increases because people should have access to high quality HCBS.
- **31% reduction in adult emergency waiting list since announcement**



# Performance-Based Contracting: Performance Standard Areas



# Performance-Based Contracting: Rollout



## ***Effective January 1, 2025***

- Residential Habilitation (licensed and unlicensed)
- Lifesharing (licensed and unlicensed)
- Supported Living

## ***Effective January 1, 2026***

- Supports Coordination



# Performance-Based Contracting: Aligning Payment with Outcomes

## 1915(b)(4) Alternative Payment Methodology

- New rate methodology – Supports Coordination
- Enhanced rates – Residential rate add-ons
- Pay for Performance (P4P)

## Performance Standards

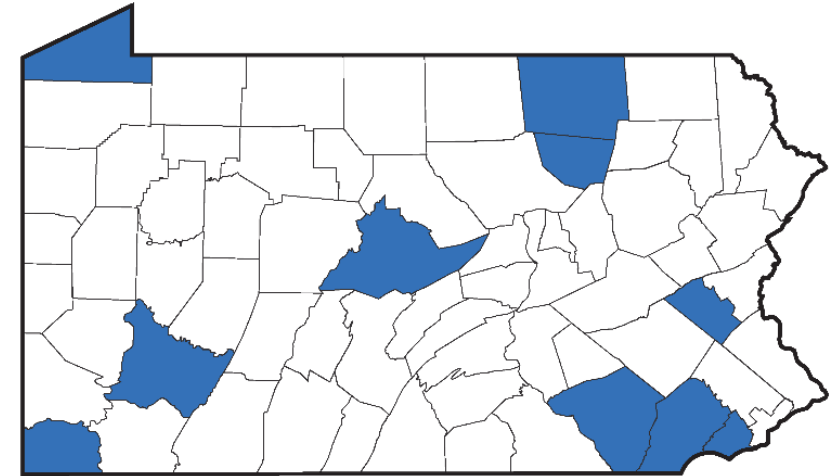
- Contracted providers must meet established performance standards targeting individual and population health/systems outcomes

# ID/A Supportive Housing Pilot

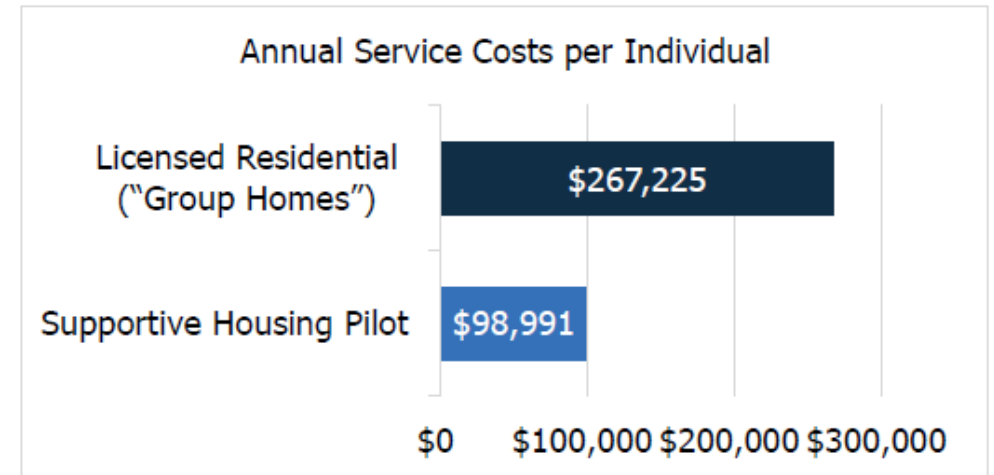
- Began **March 1, 2024**, includes **10 Counties**
- Funded by the **HCBS Augmentation Fund**
- Design: provide **financial assistance** with supportive services to live in the community in their own home

As of 1/1/2026

- 129 individuals enrolled
- 22 transitioned off subsidy
- \$724/mo average subsidy
- **\$75,117.34** Average Yearly Savings for individuals that transitioned from Residential Habilitation (Group Homes)



■ County in Supportive Housing Pilot

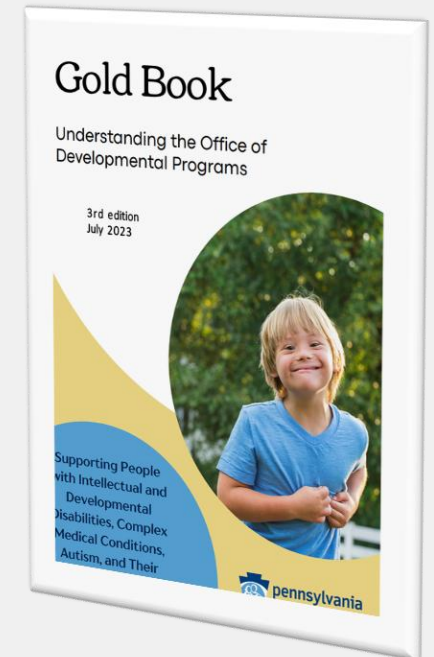


# Resources, Training, and Partners



Pennsylvania  
Department of Human Services  
Office of Developmental Programs

- [Everyday Lives](#)
- [MyODP](#) (information and training)
- [Gold Book: Understanding ODP](#)
- [Charting the LifeCourse - https://www.lifecoursetools.com/](https://www.lifecoursetools.com/)
- Autism Services, Education, Resources, and Training Collaborative (ASERT) - [PA Autism.org](http://PAAutism.org)
- [Temple University Institute on Disabilities](#)
- [Health Care Quality Units](#)
- [Pediatric Complex Care Resource Centers](#)
- Advocacy
  - [Self Advocates United AS 1 \(SAU1\)](#)
  - [Pa Family Network \(PAFN\)](#)



Questions

