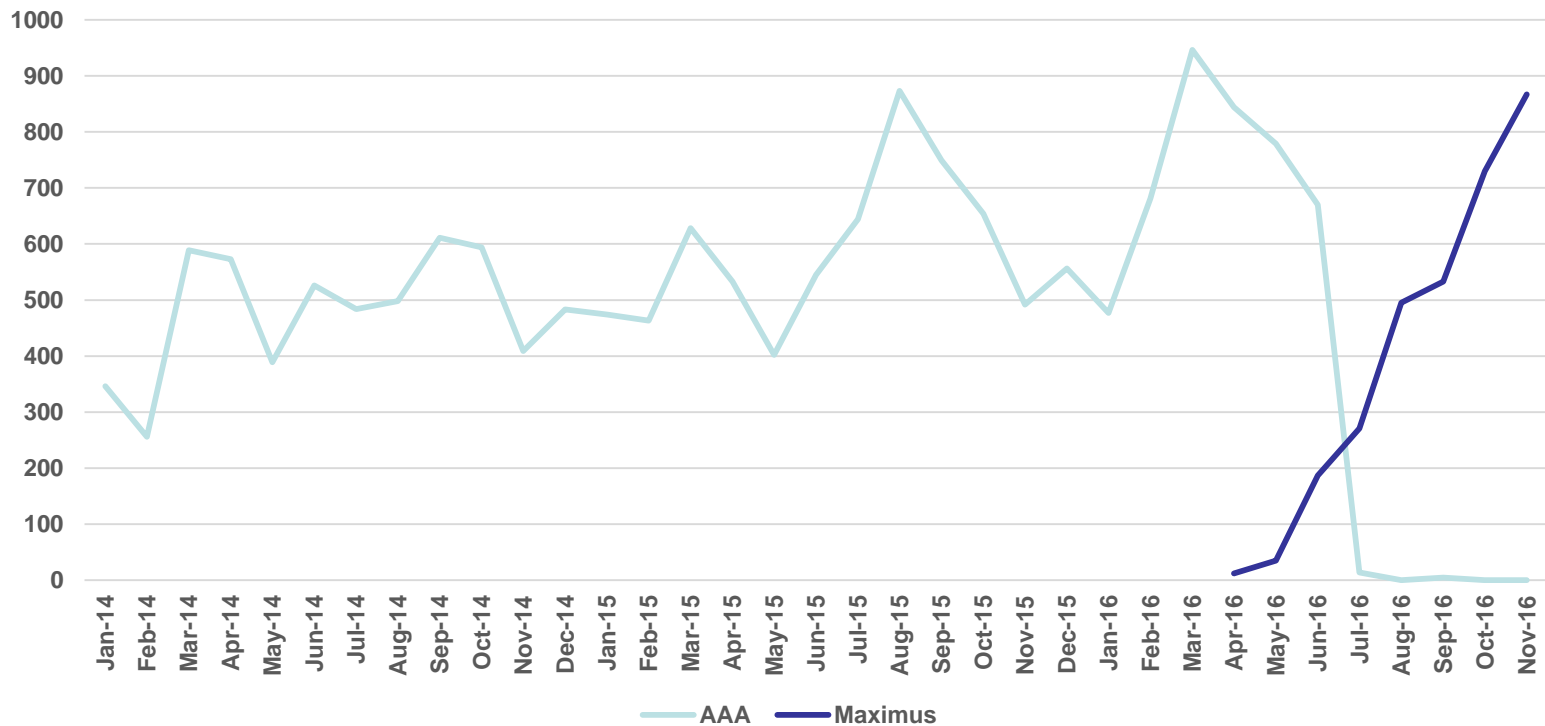


Aging Waiver Enrollment

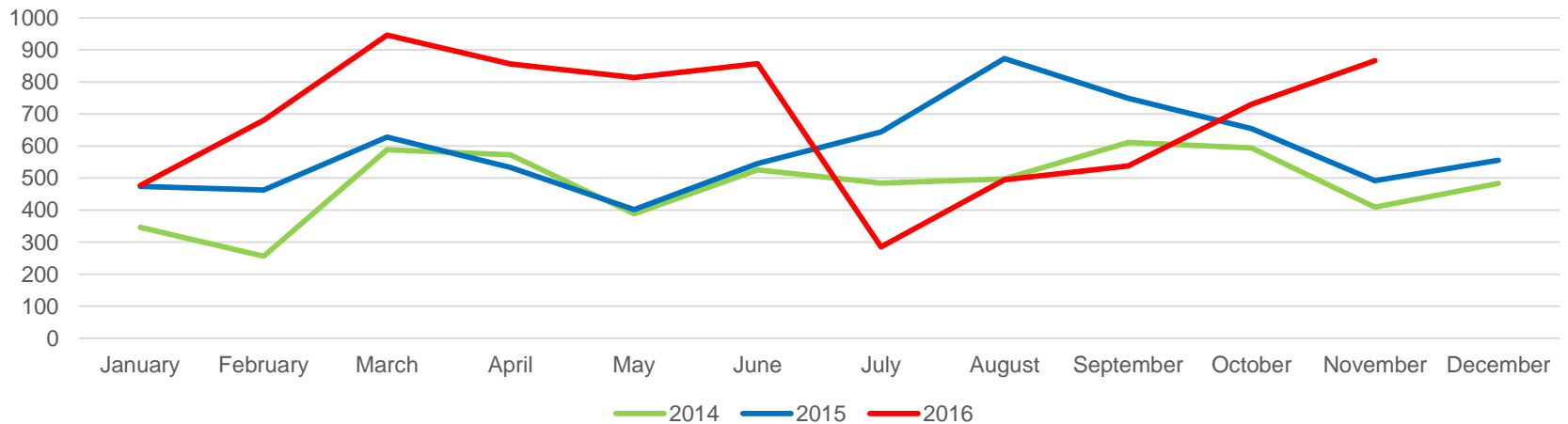
Aging Waiver Enrollments Since April, 2016 by Enrolling agent



Aging Waiver Enrollment

Aging Waiver Enrollment Volumes			
Month	2014	2015	2016
January	346	474	477
February	256	463	681
March	589	628	946
April	573	533	856
May	389	402	814
June	526	545	857
July	484	644	285
August	498	873	495
September	611	749	538
October	594	654	730
November	409	492	867
December	483	556	

Aging Waiver Enrollments by Year



Consumer and Churn Reports – Snap Shot

Section	Waiver/Act 150 Program Descriptions	Sep-15	Apr-16	May-16	Jun-16	Jul-16	Aug-16	Sep-16	Budget
A	Active Consumers authorized for services at the end of the period								
	Act 150	1,791	1,743	1,745	1,747	1,734	1,728	1,715	1,705
	Aging	28,843	29,548	29,692	29,838	29,585	29,440	29,204	36,421
	Attendant Care	11,918	13,211	13,322	13,385	13,391	13,525	13,745	12,892
	COMMCARE	790	897	901	909	911	921	925	884
	Independence	12,262	13,689	13,811	13,911	13,922	14,023	14,257	13,309
	OBRA	1,367	1,414	1,416	1,423	1,422	1,427	1,435	1,694
	LIFE	-	5,458	5,485	5,547	5,587	5,690	5,834	
	Total Active Authorized Consumers	56,971	65,908	66,392	66,608	67,080	67,244	67,533	66,905
B	Consumers added								
	Act 150	12	11	15	11	2	2	4	
	Aging	821	786	680	692	206	367	340	
	Attendant Care	244	237	203	125	138	201	321	
	COMMCARE	12	17	8	8	9	11	9	
	Independence	283	241	186	156	146	163	276	
	OBRA	4	10	6	8	6	7	11	
	LIFE	-	188	168	191	163	196	232	
	Total Consumers added	1,376	1,496	1,315	1,014	658	931	1,155	
C	Consumers that left								
	Act 150	2	5	9	5	1	5	3	
	Aging	531	548	541	571	506	580	585	
	Attendant Care	111	93	58	57	69	101	91	
	COMMCARE	18	12	-	9	8	16	11	
	Independence	119	65	55	61	64	43	52	
	OBRA	3	4	1	4	2	2	3	
	LIFE	-	144	130	120	94	91	108	
	Total Consumers that left	784	983	782	831	736	855	861	
D	Net Consumers (Section B minus Section C)	592	513	533	183	(78)	76	294	

*Active Service Plans

**Act 150 from OLTL Budget; All others CMS slots