

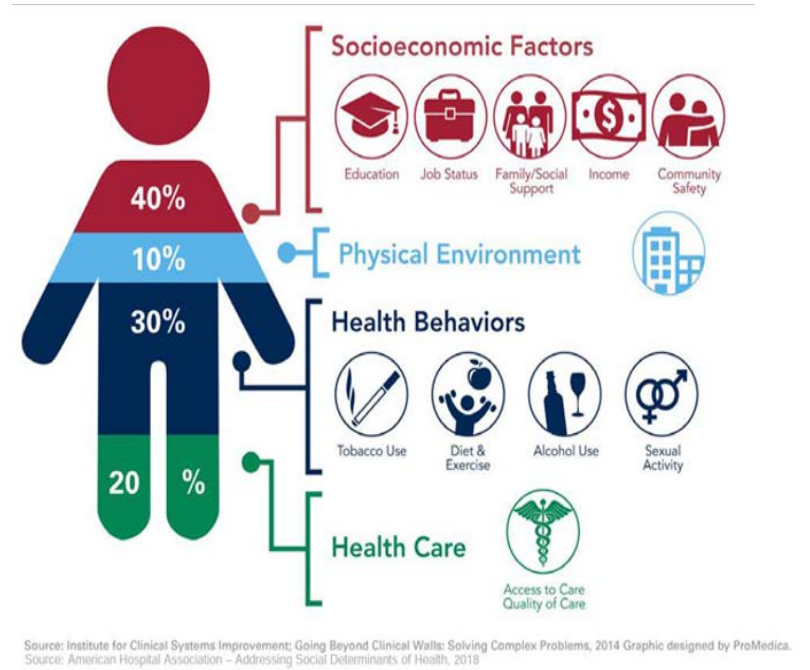
Office of Medical Assistance Programs Consumer Subcommittee Updates

Sally A. Kozak MHA, RN
Deputy Secretary

- Deputy Secretary Updates
 - Transforming Maternal Health Model
 - Removal of Daily Dose of Buprenorphine
 - CMS School-Based Services Grant Opportunity
 - Doula and Pharmacist Enrollment Updates
 - Community Health Worker (CHW)
 - Pediatric Shift Nursing
 - Pa Navigate

PA Navigate Goals

- **Building a Statewide platform for connecting patients to social services**
- **Making SDOH data as shareable as clinical data**
- **Enabling a Population-level view of citizens' needs and CBO capacity to meet them**
- **Help make Social Care sustainable**



QUESTIONS?



pennsylvania
DEPARTMENT OF HUMAN SERVICES

