

# Ainsworth Inc & Pennsylvania Department of General Services

*Expanding Our Partnership to Keep Pennsylvania's Spaces Efficient, Reliable, and Ready for the Future*

**Project Name:** Project No. DGS C-0948-0090 Phase 3 - Capitol Complex Central Plant - Building Renovations, Chiller System Replacement

**Project Location:** Pennsylvania Capitol Complex, Harrisburg, Dauphin County, PA 17120

**Date:** January 20, 2026



# NOTICE TO READERS

This document is confidential and the information it contains must not be disclosed or used for any purpose other than for consultation.

Reproduction or publication of this document, in whole or in part, without the written consent of Ainsworth Inc. is strictly prohibited.

**Please note that this proposal is valid for a period of 90 days.**



**Attention:** Susan Stanisic, Procurement Specialist ; Email: [sstanisic@pa.gov](mailto:sstanisic@pa.gov)

**Dear Susan,**

Ainsworth Inc. is pleased to submit our proposal for the Phase 3 Capitol Complex Central Plant Building Renovations and Chiller System Replacement. We appreciate the opportunity to support this high-visibility, mission-critical project for the Pennsylvania State Capitol Complex.

Ainsworth is a nationally recognized provider of technical services and construction solutions, with a strong record delivering complex mechanical, electrical, and mission-critical infrastructure upgrades across active and restricted-access facilities. Our team excels in environments requiring precise coordination, disciplined safety practices, and uninterrupted operations capabilities essential to the success of this project.

*Partnering with Ainsworth offers the Commonwealth key advantages:*

- **Proven Expertise in Central Utility Plant Projects**  
*We have extensive experience replacing chillers, pumps, switchgear, distribution systems, and major HVAC infrastructure in fully operational campuses. Our team understands phasing, shutdown coordination, and maintaining system capacity throughout construction.*
- **A Highly Qualified, Integrated Team**  
*Ainsworth’s personnel are specialists in mission-critical upgrades, underground utility and vault work, constrained-plant equipment replacement, and multi-trade coordination. Our management systems reinforce schedule adherence, quality, safety, and clear communication.*
- **Strong Commitment to Safety and Quality**  
*We emphasize risk-based planning, incident prevention, and robust QA/QC processes that reduce rework, improve predictability, and maintain cost stability from start to finish.*
- **Long-Term Value for the Commonwealth**  
*Ainsworth is committed to delivering a modern, reliable, and efficient Central Plant aligned with the Commonwealth’s long-term operational, resilience, and sustainability goals.*

We look forward to the opportunity to collaborate with the Department of General Services on this important initiative. Thank you for your consideration. Please contact us if any additional information is required.

Sincerely,

**Jordan Rhen- Estimating Manager**

Ph: 717-507-7159

Email: [Jordan.Rhen@ainsworth.com](mailto:Jordan.Rhen@ainsworth.com)

203 Lynndale Court, Mechanicsburg, Pa. 17050

## Contents

<b>CORPORATE OVERVIEW .....</b>	<b>6</b>
<b>CORPORATE HISTORY .....</b>	<b>9</b>
<b>Responsive, Tech-Enabled Mobile Service Team .....</b>	<b>11</b>
<b>Contact Information .....</b>	<b>12</b>
<b>TECHNICAL SUBMITTAL REQUIREMENTS .....</b>	<b>13</b>
<b>TECHNICAL SECTION 1 - PROJECT TEAM’S QUALIFICATIONS, EXPERIENCE &amp; PAST PERFORMANCE ..</b>	<b>13</b>
<b>TECHNICAL SECTION 2 - PROJECT MANAGEMENT PLAN.....</b>	<b>30</b>
<b>TECHNICAL SECTION 3 - STAFFING PLAN .....</b>	<b>54</b>
<b>TECHNICAL SECTION 4 - SUPPORTING DOCUMENTATION .....</b>	<b>59</b>
<b>Section T-4A Proposal Signature Page (Appendix A) .....</b>	<b>59</b>
<b>Section T-4B Non-Collusion Affidavit (Appendix B).....</b>	<b>62</b>

OVERVIEW



**CORPORATE OVERVIEW**

# STRENGTH IN NUMBERS

**1 BILLION**

sq. ft. serviced and counting

**30,000**

dedicated employees

**52**

acquisitions since 2008

**92**

years in service

**90%**of Canada's population is  
within 1 hour of a branch**2,440**

technical experts

**TSX:GDI**

Publicly Traded



## MISSION

To consistently deliver the best, most trusted facility services and innovative solutions to meet our client's needs and standards.

# OUR VALUES ARE PART OF OUR DNA



## **Respect People & Planet**

*Protecting all people and our planet*

We are committed to providing a safe, healthy, and inclusive workplace while minimizing our negative impact on the environment.



## **Be Honest & Accountable**

*Taking responsibility for our actions, words, and their impact*

We build the trust of our stakeholders by being transparent, fair, and meeting our commitments.



## **Strive for Excellence**

*Holding ourselves to higher standards*

We deliver quality solutions and best-in-class value for our clients, while keeping a positive outlook and consistently working hard to improve.



## **Promote Collaboration**

*One company, one culture!*

We are stronger together. Through our collaborative approach, we bring added value to our stakeholders and increased success for the Company as a whole.



## **Foster Innovation**

*Embracing new perspectives, ideas, and technology*

We value personal, professional and organizational growth and welcome innovation, adapting to emerging trends and customer needs.

# ABOUT AINSWORTH

Ainsworth, a subsidiary of GDI Integrated Facility Services Inc. (TSX:GDI), is a premier provider of integrated, multi-trade facility solutions. We deliver a full suite of services, including HVAC, electrical, mechanical, IT (data structured cabling), and comprehensive technical maintenance.

Our expertise spans a diverse client base, serving commercial, governmental, industrial, institutional, and residential property owners across Canada and internationally. Together with GDI, we provide end-to-end facility solutions, combining hard and soft services essential to the real estate sector.

With robust in-house capabilities and localized expertise, Ainsworth ensures exceptional quality, reliability, and efficiency, consistently meeting and exceeding our clients' needs.



## Corporate Overview

# CORPORATE HISTORY

Since 1933, Ainsworth has been a trusted provider of integrated multi-trade facility services, employing over 2,800 skilled professionals across North America. Headquartered in Toronto, Ainsworth operates coast-to-coast with strategically located offices, allowing us to deliver rapid, 24/7 support for all client needs.

Ainsworth is one of North America's premier technical services providers, offering a full spectrum of trades solutions in HVAC, refrigeration, mechanical, electrical, data cabling, and building and industrial automation. We specialize in end-to-end service for institutional, commercial, and industrial facilities, ensuring comprehensive support for maintenance and capital projects.

Our HVAC and Plumbing divisions bring deep expertise in maintaining, repairing, and replacing

equipment across all major OEM brands, including York, Daikin, Mitsubishi, Carrier, and Lennox. Ainsworth's teams are well-versed in managing large-scale facilities, such as commercial towers exceeding 500,000 square feet, as well as smaller commercial buildings, property portfolios, and schools. Our extensive knowledge and hands-on experience position us to meet diverse client needs efficiently and reliably.

Ainsworth's commitment to innovation and integrity builds trust with our clients, as we work to enhance operational resilience, reduce environmental impact, and improve the occupant experience. From technical to "soft" services, Ainsworth is dedicated to helping clients achieve peak performance and measurable value across all aspects of their facility operations.



## Corporate Overview

# WHAT SETS US APART

AINSWORTH BRINGS UNIQUE STRENGTHS TO OUR CLIENTS, STEMMING FROM TWO FUNDAMENTAL PILLARS:

### ✓ MARKET COVERAGE

This 'critical mass' provides Ainsworth the ability to support and service all major cities from coast to coast.

### ✓ VAST IN-HOUSE MULTI-TRADE EXPERTISE

Ainsworth offers services in virtually every aspect of building operation.

## North America's Technical Experts

### Mechanical Services

- Preventative Maintenance
- HVAC Services
- Plumbing Services
- Chiller Services
- Insulation

### Electical Services

- Electrical installation
- Electrical Services
- Power Systems
- Motor Rewind & Repairs

### Connected Buildings

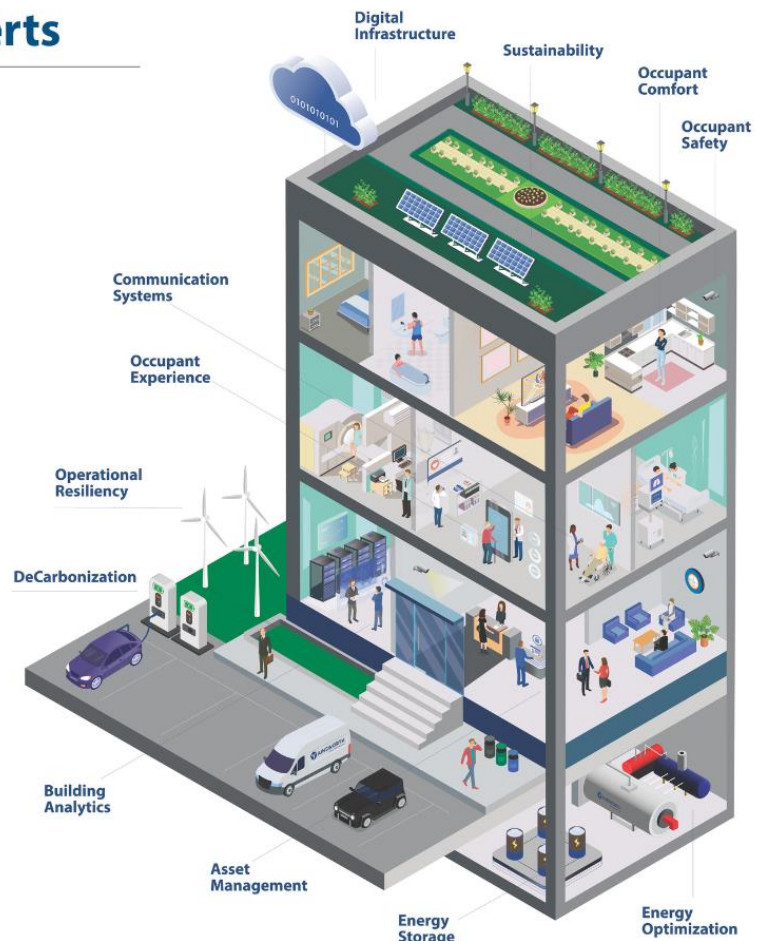
- Building Automation
- Lighting Controls
- Security
- Master System Integrator (MSI)
- Digital Twin Solutions
- Fault Detection

### Energy Performance

- Building Analytics
- Planning + Optimization
- Energy Retrofit
- Energy As A Service
- Onsite Power Generation

### Integrated Technical Solutions

- General Building Maintenance
- Tenant Services & Comfort Care
- Concierge Service
- Loading Dock & Mailroom Management
- Subcontractor Management
- 24/7 Call Centre Support



## Responsive, Tech-Enabled Mobile Service Team

Our technicians are qualified and mobile to respond to your calls when you need them. We combine a qualified and experienced service team with the latest technology to respond to the changing needs of our clients. Our technicians are equipped with smart technology to keep them connected to you with our 24/7 Bilingual National Call Centre to respond to service requests in the quickest possible time.



### **Mobile dispatch & work order App**

Mobile work management app for technicians to be scheduled and deployed promptly based on the criticality of the issue. The app ensures that work order life cycle KPI's are met.

### **Modern fleet with GPS tracking**

GPS capabilities allow transparency and efficiency across all units.

### **Our Technology is Your Quality Assurance**

- Response time analysis
- HS&E summary reports
- Trending & Failure Analysis reports
- PM vs. additional costs and trends
- Annual Capital Planning guidance and information
- Guidance about energy costs, cost predictability
- Providing a constant flow of new perspectives and ideas (innovation)
- Emissions reporting
- ABS Quality Evaluation - ISO 9001: 2015
- TSSA Certification

### **Ainsworth eCompliance**

- Profiled training requirements for each employee, through in-house and external training programs
- Ainsworth monitors industry-specific training through eCompliance
- Each employee has an assigned job profile to them which populates the appropriate training and keeps track of all valid and expired courses
- We strive for a 20 / 20 training commitment
- COR™ Certification

*20hrs HS&E and 20hrs Industry-specific Training*

## Contact Information

**National Operations Support Centre (NOSC)** 1.888.393.5553.  
email us at [NOSC@ainsworth.com](mailto:NOSC@ainsworth.com).

### Hours of Operation

Our standard hours of operation are Monday to Friday (excluding Federal/Provincial Statutory Holidays) are 7:30 AM to 5:00 PM. Saturday, Sunday & Stat Holidays.

Ainsworth has after-hours support and on-call technicians available for all trades through our bilingual National Operations Support Centre - NOSC. Also, Ainsworth's remote building automation services are available 24/7/365.

### Call Centre

Ainsworth has invested significantly in resources and technology to ensure that when our customers call us, they receive prompt response and support.

- Our state-of-the-art bilingual National Operations Support Centre is available 24/7/365 days/year.
- All calls are assigned on a priority basis.
- 95% of all customer calls are answered within 20 seconds.
- Initial contact with the customer within 1 hour.
- Our technicians carry real-time handheld devices to allow NOSC to track their location — anytime and anywhere — and send them to the nearest job site for immediate support.

### After Hours Service Calls

After-hours service requests are received and responded to accordingly based on the service priority. Our customers are provided with a toll-free service phone number that route to our Ottawa-based 24/7/365 live Bilingual National Operations Support Centre (NOSC).

*95% of all calls are answered within 20 seconds*

NOSC is always professionally staffed, and our customers experience no deviations in our receipt, triaging, solution, and confirmation processes, even after hours.

During non-business hours, the process remains the same, except that our NOSC now engages in solving service requests from a selection of “on-call” technicians serving each region. Staffing levels are determined by the number of sites within a specific area, site criticality, size, volume, type of equipment, seasonal operation and weather conditions, and remote access to sites (RBAS).

Our “on-call” resources include multi-trade technicians, supervisors, operations managers, and Health, Safety & Environment personnel. All our technicians carry real-time handheld devices to allow our call centre to track their location and send them to the nearest job site for immediate support.

# TECHNICAL SUBMITTAL REQUIREMENTS

## TECHNICAL SECTION 1 - PROJECT TEAM'S QUALIFICATIONS, EXPERIENCE & PAST PERFORMANCE

### Section T-1A Introduction to the Project Team

- Clearly identify the Project Team personnel and their roles and responsibilities on the project

#### **Ainsworth Inc. Construction Team**

##### **Mike McHenry- Vice President,**

Mike is responsible for overseeing all business operations for our Mid-Atlantic division, driving strategic growth, and ensuring successful project execution. Mike manages both our construction and HVAC service departments which has over 40 highly trained technicians. Mike's role combines leadership, technical knowledge, and business acumen to support our company's long-term success.

##### **Tyler Wilson- Director of Engineering,**

Although Ainsworth is not the Engineering firm for the project, He will support the Ainsworth team in changes and value engineering opportunities that may occur.

##### **Jordan Rhen- Estimating Manager,**

Jordan leads the estimating team in preparing accurate and competitive cost estimates and plans of execution for HVAC construction projects. Mr. Rhen analyzes project plans, specifications, and schedules to develop bids, coordinate with vendors and subcontractors, and ensure estimates align with company goals and client expectations.

##### **Tim Wolf- Director of Construction,**

Tim leads and oversees all HVAC construction operations, ensuring projects are executed efficiently, safely, and to high-quality standards. Tim manages multiple project teams, develops construction strategies, and coordinates with clients, contractors, and internal departments to meet company and client goals and deadlines.

##### **Sean Wurster- Vice President, Health, Safety and Environment**

Sean is responsible for developing, implementing, and overseeing safety programs and policies to ensure a safe working environment on all of our construction sites. Sean and his team conduct training, perform site inspections, ensure compliance with OSHA and industry regulations, and lead incident investigations to promote a culture of safety throughout the organization.

**Quinten Balmer- CAD Manager**

Quinten will oversee the development and management of HVAC installation drawings and models using computer-aided design (CAD) software. He will lead the project coordination team, ensure accuracy and consistency in design, maintain CAD standards, and collaborate with engineers and project managers to support construction planning and coordination.

**Ryan Raves- Senior Project Manager,**

Mr. Raves leads complex HVAC construction projects from planning through completion, ensuring they are delivered on time, within budget, and exceeding quality standards. He coordinates cross-functional teams, manage client relationships, resolve issues, and oversee project schedules, budgets, and compliance with safety and regulatory requirements.

**Parker Yeakel- Project Manager,**

The Project Manager is responsible for the detailed planning, coordinating, and overseeing HVAC construction projects from start to finish. Parker will manage schedules, budgets, subcontractors, and materials to ensure timely and cost-effective project delivery while maintaining quality and safety standards.

**Emily Parks- Project Coordinator,**

Emily supports project managers and field teams by organizing project documentation, tracking schedules, coordinating materials and subcontractors, and ensuring smooth communication between stakeholders.

Emilys detailed coordination skills ensure materials and equipment arrive on time but not too early to keep projects running smooth and without interference. She keeps HVAC construction projects on track and aligned with timelines, budgets, and quality standards.

**Bob Phillips- General Superintendent,**

Mr. Phillips oversees all field operations for Ainsworth construction projects, ensuring work is performed safely, efficiently, and to exceed quality standards. Bob manages site supervisors and crews, coordinates with project managers, and ensure schedules, and safety protocols are maintained across multiple job sites.

**Brett Walker- Project Superintendent,**

Brett will manage daily on-site operations for this HVAC construction project, ensuring work is performed safely, efficiently, and according to plans and specifications. Brett will supervise field crews, coordinate with subcontractors, monitor progress, and resolve issues to keep the project on schedule.

**Tom Murray- Account Manager,**

Tom leads and oversees our chiller department. Tom has a team of highly trained and certified technicians that service several central utility plants throughout central pa. These technicians will be involved in the disassembly of the existing chillers and assembly of the new chillers.

**Matt Stover- Chiller Mechanic,**

Matt is our lead chiller mechanic. Matt will oversee all critical chiller operations, including safely and properly disassembling of the existing chillers, assembly of the new chillers, and be thoroughly involved in the start up and trainings for the new chillers.

- Describe any history of working relationship between firms or team members, including subcontractors performing critical work

The Ainsworth construction team thrives on communication and collaboration to bring success to projects like this Capitol Complex Chiller Plant Renovation. Each team member brings their own skillset and knowledge of the industry to help ensure success when we work together as a team. Our attention to detail and understanding of critical systems ensures successful, safe, and on-time delivery of the final product that the Commonwealth of Pennsylvania is seeking.

Ainsworth is planning on subcontracting out the CAD/BIM coordination and modeling for this project. Luckily, we have Skywrite as a trusted ally, and they are more than capable of leading this charge with the oversight from our own CAD manager Quinten Balmer who will stay involved and help push other Prime contractors in their coordination efforts.

Johnson Controls will be performing the HVAC controls portion of this project. Ainsworth and Johnson Controls has completed countless projects together and we are certain this will be another successfully executed project together.

Our temporary Chiller equipment will be provided by *Aggreko*. Aggreko has been providing temporary cooling and heating equipment for facilities like this Central Utility plants for years. Aggreko understands the importance of these critical systems and has technicians available in central Pa 24/7 in case of potential service interruptions.

Testing and Balancing of the systems are another critical piece to a project like this. We are excited to partner with Flood and Sterling to work on this project. Flood and Sterling has a great understanding of the chilled water systems and is a great fit for a project of this magnitude.

Water treatment was designated by the Facility to be performed by PROASYS. We are excited to work with them on this project since they are so familiar with the current system and they know what the facility will be expecting to receive as a final product.

- Clearly describe Proposer's understanding of the services and materials to be provided on the project

Ainsworth recognizes the critical role that precise HVAC temperature control and cooling plays in maintaining optimal performance and environmental stability for both people and infrastructure. We understand the importance of proper piping and component installation within the hydronic system as well as the importance of proper equipment installation and start up. With these chillers needing to be positioned into place in several pieces, Ainsworth has qualified technicians who can properly assemble these chillers and maintain the quality and precision that is needed to maintain the factory warranty and ensure optimal operation for years to come.

- Describe the Project Team's experience with projects of similar nature, size and complexity (i.e. large complex mechanical and electrical central utility plants serving a multiple-building campus).

The Ainsworth team has performed several Central Utility plant type projects in the past, and Ainsworth is the contractor that is currently helping to maintain the existing system within the PA Capitol complex plant.

Ainsworth is also currently working on the PSU Harrisburg new academic learning center and new chiller plant construction project. On this project we are installing 2pc 560ton chillers and associated 150hp pumps. The new central plant piping system will also be able to accommodate an additional 6 chillers and associated pumps and cooling towers for future campus expansion. This chilled water will be distributed throughout the Penn State Harrisburg campus.

In 2019 the Ainsworth team replaced two 1200ton chillers and 100hp pumps for the Lebanon VA Medical centers central utility plant. During this work we provided two 500ton temporary chillers and associated pumps to cover the redundancy needed by the VA Medical.

In 2017 Ainsworth replaced two 1000ton chillers for the Mechanicsburg Naval Support facility. This project also required the installation of two 500ton temporary chillers during the replacement of their permanent chillers. This project was so critical to their high security that it required escorts for all personnel while working within the facility. Although the project was not for a Central Utility plant, this project was as complex and difficult as can be imagined. After the completion of this project the end user was extremely happy, and Ainsworth was invited to bid the replacement of their boilers and hot water system.

- Describe the Project Team's experience with working in restricted and controlled access facilities where the scheduling and sequencing of the work is critical to maintaining operations in a high-profile environment.

The Ainsworth Team has completed several projects of similar nature. Here are a few examples from key members of the team.

*Tom Murray* and his team have been servicing the Chillers and working in the PA Capitol complex for the past 2 years. Prior to that Tom had been responsible to maintain the chillers from 1990 to

2010. We fully understand the importance of security and coordination with the facility maintenance staff to ensure smooth operations of these critical HVAC systems.

*Ryan Raves's* most recent chiller replacement project was at the Silver Spring shopping center in Silver Spring MD. During this project Ryan had to coordinate the replacement of an 875-ton water cooled chiller including new isolation and modulating control valves that were added for efficiency and future operations of the building. Due to the nature of this crane pick and magnitude of the necessary road closure, our team had to coordinate all activities with the White House secret service division due to the proximity to Washington DC. Within the past year Ryan also managed a project on the Mechanicsburg PA Naval Support Facility where we replaced chilled water pumps for a critical systems building. All our employees were properly badged, trained and had to follow very strict security protocols, and we did so without any issues.

*Bob Phillips* has overseen many projects on secure facilities, including Military bases, schools, and detention facilities. Bob understands the importance of keeping the crew focused on the importance of following protocol and schedules to ensure our manpower can continue working on the project without causing concern with the operators of the facility.

*Brett Walker* has been working on "secure" facilities for much of his career. This includes educational facilities, government buildings, and detention facilities. Bret was a site superintendent at the Benner State correctional institution where he oversaw construction and turnover to the state while following strict security protocols and detailed coordination.

- Describe the Project Team's experience with working on projects that include special consideration for the historic preservation of the project area.

Our team does have experience working on Historic buildings. We understand that existing structures and finishes need to all be considered un-alterable until specific direction is given from the facility. We also understand that archeologists will be overseeing the excavation processes and the importance of working with them to ensure nothing is disturbed that should not be disturbed.

- Describe the team's experience with maintaining the overall project schedule, milestones, and completion dates to meet critical path requirements.

The Ainsworth construction team is very accustomed to working on "critical path" projects, where key milestones must be completed on time to maintain the schedule and sequencing to keep progress tracking as planned. This will be accomplished by our management team ensuring tools, materials, equipment, and manpower are on site when the tasks require them .

- Describe experience working on a multi-prime contract.

The Ainsworth Team has performed countless Multi-prime projects throughout the past several years. We fully understand the importance of working as a team with other prime contractors to achieve a safe, on-time, and quality product. Contractors that are bidding on a project of this magnitude should understand that proper communication and coordination will help everyone involved complete a successful project.

### ONLY .2 HVAC

- Describe the Proposer's experience with the installation of at least Three (3) 450-Ton (or larger) temporary air-cooled chillers and associated connection to existing piping.

Ainsworth has extensive experience with providing temporary chilled water systems. In 2022 Messiah college had a chiller go down and our service department was able to bring in a 500ton temporary chiller, add temporary connections, and keep the facility up and running until we were able to get the necessary replacement parts and get their permanent system back online.

In 2019 the Ainsworth team installed two 1200ton chillers and 100hp pumps for the Lebanon VA medical center. During this work we needed to provide two 500ton temporary chillers and associated pumps to cover the redundancy needed by the VA Medical center.

In 2017 Ainsworth replaced two 1000ton chillers for the Mechanicsburg Naval Support facility. This project also required the installation of two 500ton temporary chillers for during the replacement of their permanent chillers. This project also required extremely high security measures. This project required escorts for all personnel while working within the facility. Although this project was not for a Central Utility plant, this project was as complex and difficult as can be imagined. After the completion of this project the end user was extremely happy, and Ainsworth was invited to bid the replacement of their hot water system.

- Describe the Proposer's experience with the replacement of at least three (3) 1200-Ton (or larger) indoor water-cooled chillers.

Ainsworth partnered with York International and installed the existing system in the Capitol complex. This was included the installation of the 2500ton YK chillers and associated pumps.

In 2019 the Ainsworth team installed two 1200ton chillers and 100hp pumps for the Lebanon VA medical center. During this work we needed to provide two 500ton temporary chillers and associated pumps to cover the redundancy needed by the VA Medical center.

In 2015 the Ainsworth team installed the 1500ton chiller that serves strawberry square. This was another project where the chillers had to be disassembled and re-assembled to get them into their permanent position within the facility.

- Describe the Proposer's experience with the replacement of at least four (4) 250 HP (or larger) chilled water pumps and at least two (2) 200 HP (or larger) condenser water pumps.

Ainsworth partnered with York International and installed the existing system in the Capitol complex. This was installing the 2500ton YK chillers and associated pumps. Unfortunately, in the central PA region there are not many pumps 200hp and larger.

Other than the existing pumps in the Capitol Complex we have not installed pumps over 200hp. We typically see pumps between 75 and 150hp for large hydronic systems. We have several factory trained technicians who can install, align, service, and rebuild pumps of any size, but we just don't see them in our area.

- Describe the Proposer's experience with the replacement and modification of large diameter steam, condenser water and chilled water piping and valves throughout a large complex mechanical central utility plant serving a multiple-building campus.

As previously mentioned, Ainsworth partnered with York International in replacing the existing system in the Capitol complex. Ainsworth was solely responsible for all the large diameter piping that is currently being used within the capital chiller plant. This included the demolition of existing piping and the installation of new piping.

Removal of large HVAC equipment and piping is something we perform very often. Pipes of this size are not common, but we do have certified riggers who are more than qualified to perform this project.

- Modifications to and coordination with an existing open-loop and closed loop hydronic chemical water treatment chemical treatment system as part of a large complex mechanical central utility plant serving a multiple building campus.

Ainsworth fully understands the importance of properly treating the water within the hydronic system. This can protect critical components from failing and ensure longer life span for all equipment in the system. We will work closely with PROASYS to give them the access points into the system that they need to properly treat and maintain the water quality the system needs.

- Describe the Proposer's experience with ventilation and exhaust for an underground electrical switchgear vault.

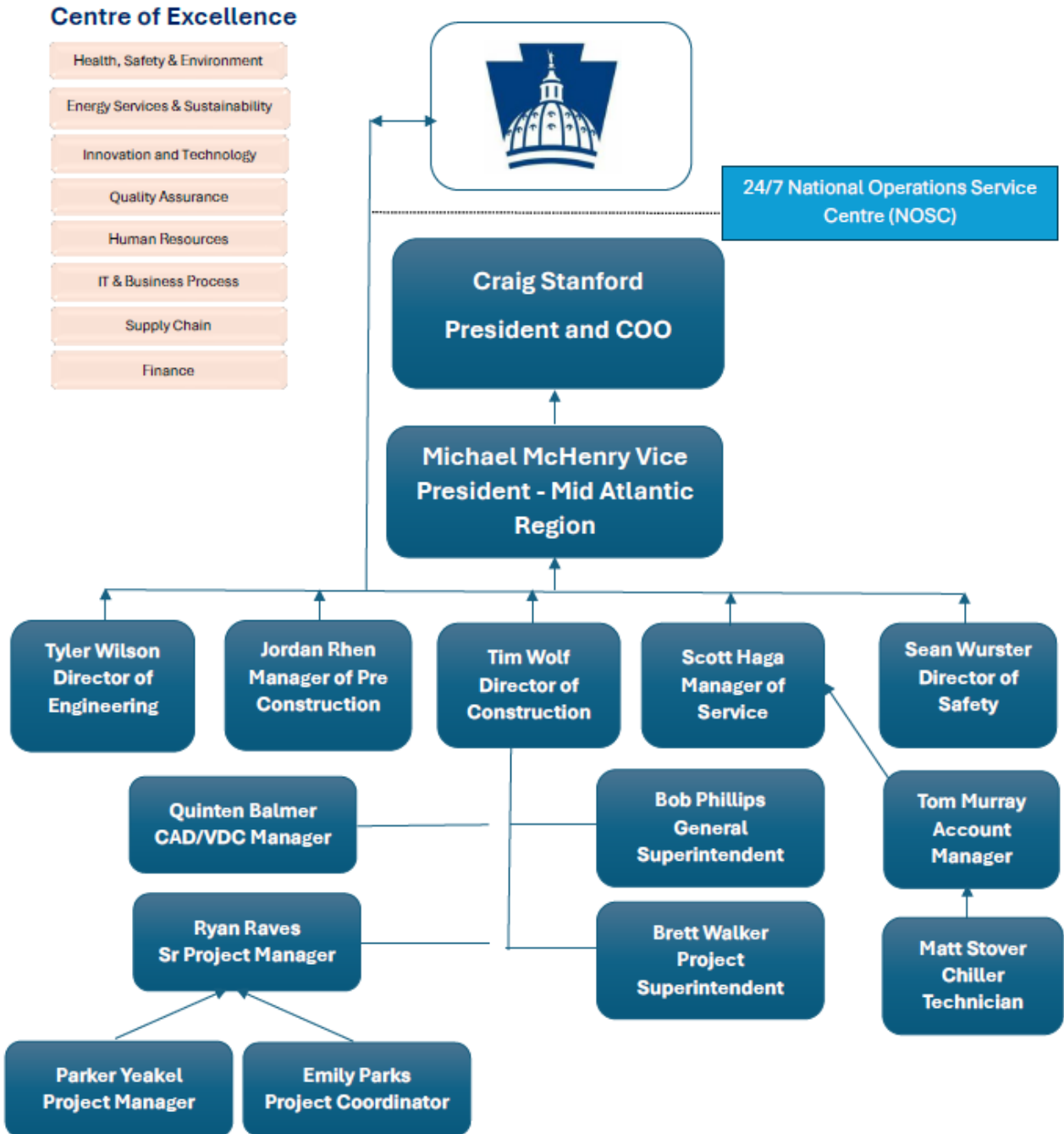
Ainsworth has recently performed a project at the Mechanicsburg Naval support facility where we supplied ventilation and exhaust for a critical underground electrical vault. This vault carries power for emergency backup generators at one of the facilities most critical buildings. Ainsworth supplied 10pc 24" diameter air intake ducts to partner with their 12,000-cfm exhaust fan. This fan was operated by occupancy sensors as well as temperature sensors.

- Describe the Proposer's experience with general demolition in an existing chiller plant to support equipment and large diameter piping replacements and relocations.

As previously mentioned, Ainsworth partnered with York International in replacing the existing system in the Capitol complex. Ainsworth was solely responsible for all the large diameter piping that is currently being used within the capital chiller plant. This included the demolition of existing piping and the installation of new piping.

Removal of large HVAC equipment and piping is something we perform very often. Pipes of this size are not common, but we do have certified riggers who are more than qualified to perform this project.

➤ Organizational Chart



**Section T-1B Prime Contractor: Qualifications, Experience and Past Performance**

➤ Appendix F

**APPENDIX F  
PRIME CONTRACTOR  
QUALIFICATION STATEMENT**COVER SHEETDGS Project Name Capitol Complex Central Plant- Building Renovations, Chiller SystemDGS Project Number DGS C-0948-0090 Phase 003Check One: Corporation, Partnership, Individual, Joint Venture, Other \_\_\_\_\_Name of Firm Ainsworth IncorporatedAddress 203 Lynndale Court, Mechanicsburg, Pa. 17050Principal Office 131 Bermondsey Rd, Toronto, Ontario, M4A 1X4Owner or Authorized Representative Jordan Rhen, Mid Atlantic Estimating Manager

**SECTION 1 – INFORMATION ON FIRM**

**1.1 Background Information**

- a) How many years has the firm been in business? 24
- b) How many years has the firm been doing business in the proposed contract field? 24

Under what former names has the firm conducted business?  
Enginuity LLC was founded in 2002, and was later acquired by  
Ainsworth Incorporated in 2022.

- c) Provide an **Attachment 1** to this Qualifications Statement identifying all jurisdictions in which the firm is licensed or otherwise qualified to do business. List and provide copies of any business or trade licenses, certificates or registrations (to the extent that they apply to the Contract Work) held by the firm.
- d) If the firm is a corporation, provide the following information:  
Date of incorporation August, 21, 2018  
State of incorporation Delaware  
President's name Craig Stanford  
Vice President's name(s) Michael McHenry  
Secretary's name Christian Marcoux  
Treasurer's name Paulo Mota

- ~~e) If the firm is a partnership, provide the following information:  
Date of formation \_\_\_\_\_  
Type of partnership \_\_\_\_\_  
Names of partners \_\_\_\_\_~~

- ~~f) If the firm is individually owned, provide the following information:  
Date of formation \_\_\_\_\_  
Name of owner \_\_\_\_\_~~

- ~~g) If the form of the firm is other than those listed above, describe it and name the principals:  
\_\_\_\_\_  
\_\_\_\_\_~~

## SECTION 2 - EXPERIENCE AND PERFORMANCE

### 2.1 General

- a) Provide the annual construction volume in dollars completed by the firm in the past three years:

Year 2025 \$ 45,000,000

Year 2024 \$ 45,000,000

Year 2023 \$ 55,000,000

- b) Identify the percentage of work on similar projects the firm typically performs with its own work force 80%.
- c) List the categories of work that the firm normally performs with its own forces on similar projects.

Demo of piping and equipment, Piping, and Equipment installation.

### 2.2 Project Experience and References

Submit as **Attachment 2** to this Qualifications Statement:

- a) Suggested number of Sheets/Pages:

- 3 sheets/(6 pages)

Three (3) detailed project descriptions for relevant projects that are similar in size and scope to the Contract Work. The project descriptions shall include, at a minimum, the following information presented in the order listed below:

- Name of project, type of project and location
- Description of the project and relevance of work to the Contract Work
- Contact information for an owner representative familiar with the firm's work performed on this project. Include name, address, telephone number(s) and e-mail address.
- The original bid/proposal price and the final contract price. If the project is ongoing, project the final price and relation to proposal price. Contract value for which the firm was/is responsible.
- The original date for project completion and the actual completion date. If the project is ongoing, project the completion date and relation to original schedule.
- As available, performance ratings of the work evaluated by owner or owner's representative.

### 2.3 Contractor Safety Record

Submit as **Attachment 3** to this Qualifications Statement the information specified herein and verify this information by providing copies of OSHA 300/200 Forms or appropriate documentation from insurance carriers, as applicable. The firm may submit written explanations to comment on or clarify its safety record.

- a) Provide the firm's Workers Compensation Experience Modification Rating for the past three years, beginning with the most recent year available:

Year 1: 3/1/25-3/1/26 .642

Year 2: 3/1/24-3/1/25 .856

Year 3: 7/1/23-7/1/24 .858

- b) Provide the firm's Total Lost Workday Incidence Rate (LWDIR) for the past three years, beginning with the most recent year available:

Year 1: 2024 0.00

Year 2: 2023 0.00

Year 3: 2022 0.00

\*LWDIR Rate = Number of Lost Time Injuries & Illnesses x 200,000 ÷ Total Hours Worked

- c) Provide the firm's Recordable Incidence Rate (RIR) for the past three years:

Year 1: 2024 1.1

Year 2: 2023 3.3

Year 3: 2022 1.6

\*RIR Rate = Number of Injuries x 200,000 ÷ Total Hours Worked

- d) Provide in an **Attachment 4** to this Qualifications Statement a list of any health or safety citations issued by federal or state agencies for serious or willful violations issued in the past 3 years. Include a separate statement for any such violations and include the citation number, a brief description of the violation and the amount of penalty, if any, for each violation and current status of violation.

### SECTION 3 - REQUIRED DISCLOSURES

The firm shall answer the following questions with regard to the past three (3) years. If any question is answered in the affirmative, the firm shall submit in an **Attachment 5** to this Qualifications Statement, for each affirmative answer, a written explanation which shall provide details concerning the matter in question, including applicable dates, locations, names of projects/project owners and current status of any such matter.

- 3.1 Has the firm ever been debarred or suspended from doing business with any federal, state or local government agency or private entity?

Yes \_\_\_ No X

- 3.2 Is the firm currently or has the firm been otherwise prohibited from doing business with any federal, state or local government agency or private entity?

Yes \_\_\_ No X

- 3.3 Has the firm been denied prequalification (not including short listing), declared non-responsible, or otherwise declared ineligible to submit bids or proposals for work by any federal, state or local government agency or private entity?

Yes \_\_\_ No X

- 3.4 Has the firm defaulted, been terminated for cause or otherwise failed to complete any project that it was awarded?

Yes \_\_\_ No X

- 3.5 Has the firm been assessed or required to pay liquidated damages in connection with work performed on any project?

- Yes \_\_\_ No X
- 3.6 Has the firm had any business or professional license, registration, certificate or certification suspended or revoked?  
Yes \_\_\_ No X
- 3.7 Have any liens been filed against the firm as a result of its failure to pay subcontractors, suppliers, or workers?  
Yes \_\_\_ No X
- 3.8 Has the firm been denied bonding or insurance coverage or been discontinued by a surety or insurance company?  
Yes \_\_\_ No X
- 3.9 Has the firm been found in violation of any laws, including but not limited to contracting or antitrust laws, tax or licensing laws, labor or employment laws or environmental laws by a final decision of a court or government agency?  
Yes \_\_\_ No X
- \*Note: information regarding health and safety violations is addressed in a previous section.
- 3.10 Has the firm or its owners, officers, directors or managers been the subject of any criminal indictment or criminal investigation concerning any aspect of the firm's business?  
Yes \_\_\_ No X
- 3.11 Has the firm been the subject to any bankruptcy proceeding?  
Yes \_\_\_ No X

#### **SECTION 4 - REQUIRED REPRESENTATIONS**

In submitting this Qualifications Statement, along with the representations and authorizations listed on the Proposal Signature page and in the RFP, the firm also makes the following representations, which it understands are required as a condition of performing the Contract Work and receiving payment for same.

- 4.1 The firm will possess all applicable professional, business and trade licenses required for performing the Contract Work.
- 4.2 The firm satisfies all bonding and insurance requirements as stipulated in the solicitation for the Contract Work.
- 4.3 The firm and all subcontractors it employs in execution of the Contract Work shall be in full compliance with the Commonwealth's requirements for workers' compensation insurance according to all applicable laws, and unemployment insurance according to all applicable laws.
- 4.4 The firm and all subcontractors it employs in execution of the Contract Work shall be in full compliance with all requirements of the Commonwealth's prevailing wage law and Public Works Employment Verification Act.
- 4.5 If awarded the Contract Work, the firm represents that it will not exceed its current bonding limitations when the Contract Work is combined with the total aggregate amount of all unfinished work for which the Contractor is responsible.

- 4.6 The firm represents that it has no conflicts of interests with the Commonwealth of Pennsylvania and, if awarded the Contract Work, any potential conflicts of interest that may arise in the future will be disclosed immediately to the Department of General Services.
- 4.7 The firm represents the price offered in connection with its proposal for the Contract Work was arrived at independently without consultation, communication or agreement with any other Proposer or competitor.
- 4.8 The firm will ensure that employees and applicants for employment are not discriminated against because of their race, color, religion, sex or national origin.

➤ Experience and Qualifications

**OSHA Form 300A**  
**Summary of Work-Related Injuries and Illnesses**

**Year 20 23**

Department of Consumer & Business Services  
Oregon Occupational Safety & Health Division (OR-OSHA)

Form approved OMB no. 1218-0176

All establishments covered by OAR 437-001-0700 must complete this Summary, even if no work-related injuries or illnesses occurred during the year. Remember to review the Log to verify that the entries are complete and accurate before completing this summary. Using the Log, count the individual entries you made for each category, write the totals below, make sure you've added the entries from every page of the Log. If you haven't had any cases, write "0". Employees, former employees, and their representatives, have the right to review the OSHA Form 300 in its entirety. They also have limited access to the DCBS Form 801 or its equivalent. See OAR 437-001-0700(20)

**Number of Cases**

Total number of deaths	Total number of cases with days away from work	Total number of cases with job transfer or restriction	Total number of other recordable cases
0 (G)	0 (H)	0 (I)	9 (J)

**Number of Days**

Total number of days away from work	Total number of days of job transfer or restriction
0 (K)	0 (L)

**Injury and Illness Types**

Total number of... (M)			
(1) Injuries	9	(4) Poisonings	0
(2) Skin disorders	0	(5) Hearing Loss	0
(3) Respiratory conditions	0	(6) All other illnesses	0

**Establishment Information**

Your establishment name Ainsworth Inc  
 Street 203 Lynndale Court  
 City Mechanicsburg State Pa ZIP 17050  
 Industry description (e.g., Manufacturer of motor truck trailers) Plumbing, Heating, and Air Conditioning  
 Standard Industrial Classification (NAICS), if known (e.g., 336212) 1 7 1

**Employment Information** (If you don't have these figures, see the worksheet on the back of this page to estimate.)

Annual average number of employees 309  
 Total hours worked by all employees last year 542,834

**Sign here**  
 Knowingly falsifying this document may result in a fine.

I certify that I have examined this document and that, to the best of my knowledge, the entries are true, accurate, and complete.

[Signature] Sr VP Mid-Atlantic  
 Company Executive Title  
 Phone: (717) 792-9226 Date: 1 / 10 / 24

Keep this Summary posted from February 1 to April 30 of the year following the year covered by this form.





Marsh McLennan Agency  
825 Maryville Centre Drive | Suite 200  
St. Louis | MO 63017  
T +1 314 594 2700  
MarshMMA.com

September 11, 2025

RE: Ainsworth Inc. Experience Modification Rating  
State of Pennsylvania

To Whom It May Concern:

Pennsylvania is a state that produces its own experience modification rating. The rating for the captioned client for the current policy year and the prior two years is as follows:

Policy Year	Experience Modification Rating
3/1/2025 to 3/1/2026	0.642
3/1/2024 to 3/1/2025	0.856
7/1/2023 to 7/1/2024	0.858

If you require any additional information, please do not hesitate to contact me.

Sincerely,

*Travis M. Blair*

**Travis M. Blair, MBA, CPCU, ARM**  
Senior Vice President | Construction Practice Leader  
Business Insurance, St. Louis & Overland Park

Phone: 314-624-5085  
Email: [travis.blair@marshmma.com](mailto:travis.blair@marshmma.com)

➤ Past Performance

### **Ainsworth Mid-Atlantic Qualifications and Relevant Project Experience**

The Ainsworth Mid-Atlantic team is fully qualified to perform HVAC and plumbing construction and renovation work throughout Pennsylvania, Maryland, Delaware, and Virginia. Our organization maintains multiple master plumbing licenses and professional engineering licenses across these regions. In addition, our technicians hold certifications in refrigeration abatement, installation, and transportation, ensuring full compliance with state and federal regulations.

Below is a summary of representative projects demonstrating our experience with chiller plants, central utility plant upgrades, and large-scale HVAC infrastructure installations.

#### **Project: PSU Harrisburg – Chiller Plant & Academic Learning Center**

**Role:** HVAC & Plumbing Contractor

**Owner Contact:** Dan Barlup – 717-805-5896 | [deb39@psu.edu](mailto:deb39@psu.edu)

Ainsworth is currently contracted to construct a new central chiller plant for the Penn State Harrisburg campus. The project scope includes installation of base chiller plant equipment, associated piping systems, and full HVAC and plumbing support.

- **Contract Value:** \$6,800,000 (current)
- **Potential Additional Scope:** Six additional chillers, twelve pumps, and two cooling towers (pricing pending)
- **Schedule:** On track for completion by **August 2026**

Should Penn State authorize the future expansion equipment, our team will integrate the new equipment while maintaining continuous operation of the base system.

#### **Project: VAMC Lebanon – Chiller Replacement (Project No. 19000013)**

**Role:** HVAC Contractor (Subcontractor to Arthur Funk & Sons – Prime Contractor)

**Owner Contact:** Nicholas Bierman – 717-675-3619 | [Nicholas.Bierman@va.gov](mailto:Nicholas.Bierman@va.gov)

Ainsworth completed a comprehensive chiller replacement project at the Lebanon VA Medical Center, including full demolition of existing equipment, installation of new chillers provided by others, and piping installation for the central utility plant.

- **Contract Value:** \$3,150,000
- **Schedule:** November 2019 – March 2020

The project was completed prior to significant COVID-19 restrictions and delivered on schedule.

**Project: Strawberry Square – Chiller Replacement****Role:** HVAC Subcontractor to Siemens (Ainsworth/Enginuity)**Owner Contact:** Matt Peterson – 717-686-0628

Ainsworth replaced a 1,500-ton chiller and performed numerous system upgrades throughout the Strawberry Square facility. Scope included VAV box replacements, repair and replacement of exhaust fans, and upgrades to steam and water metering systems.

- **Contract Value:** \$1,072,000
- **Schedule:** March 2015 – July 2017

This multi-year project was completed successfully while maintaining building operations.

**Section T-1C Designated Critical Work: Qualifications, Experience and Past Performance**  
*(Appendix G with attachments + 6 pages for exp and past performance)***ONLY .2 HVAC**

- Temporary chilled water systems, Water-cooled chillers and system pumps – **Aggreko**
- Central plant piping and valve Demolition and replacement (steam, chilled and condenser water) - **Ainsworth**
- HVAC central plant controls and optimization strategy – **JCI**
- Testing, adjusting, and balancing – **Flood and Sterling**
- Chemical treatment – **PROASYS**

***Please find enclosed the Appendix G and its relevant attachments as required***

**TECHNICAL SECTION 2 - PROJECT MANAGEMENT PLAN****Section T-2A Project Management Team**

- Identified personnel will be assigned to this project full time and have experience managing projects of similar scope, value, and complexity

- **Mike McHenry (Vice President)** and **Tim Wolf (Director of Construction)** provide executive-level leadership and oversight for the chiller system replacement. Their combined experience managing large-scale mechanical, HVAC, and central utility plant projects ensures strategic execution, resource alignment, and operational excellence throughout all phases of the work.

- **Ryan Raves (Senior Project Manager)** and **Parker Yeakel (Project Manager)** will oversee the chiller replacement project from planning through final commissioning. Their responsibilities include detailed scheduling, budgeting, subcontractor and vendor coordination, risk mitigation, and issue resolution. Both bring extensive experience managing high-value, technically complex HVAC and chiller system projects.

- **Bob Phillips (General Superintendent)** and **Brett Walker (Project Superintendent)** provide hands-on field supervision for all phases of chiller demolition, installation, piping, and system integration. Their leadership ensures field crews work safely, efficiently, and in strict accordance with project specifications, sequencing requirements, and quality standards.

- **Tom Murray (Account Manager – Chiller Department)** and **Matt Stover (Lead Chiller Mechanic)** bring specialized expertise in chiller disassembly, installation, and commissioning. Their experience with large-tonnage chiller systems and central utility plants ensures the replacement is performed safely, accurately, and with full operational reliability.

- **Emily Parks (Project Coordinator)** supports the construction team by managing documentation, tracking materials and deliveries, coordinating with subcontractors, and maintaining efficient communication across all project stakeholders—ensuring work progresses smoothly and on schedule.

- **Jordan Rhen (Estimating Manager)** and **Quinten Balmer (CAD Manager)** ensure the project is fully supported from cost development through construction coordination, providing accurate estimates, constructible drawings, and coordinated field-ready installation documents to minimize conflicts and support efficient execution.

This team structure provides full-time, experienced personnel with extensive backgrounds in chiller replacement, central plant upgrades, and large-scale mechanical construction. Their collective expertise ensures the project is managed and executed to the highest standards of safety, quality, and performance.

- Identified personnel have the knowledge and proven capability to provide high quality management and coordination of all skills, trades, and subcontractors

Yes, the Ainsworth Inc. team has the demonstrated knowledge and proven capability to manage and coordinate all trades, skills, and subcontractors required for a successful chiller system replacement project:

- **Mike McHenry (Vice President)** provides executive-level leadership and oversight, ensuring operational alignment, resource support, and strategic decision-making across all project phases.
- **Tim Wolf (Director of Construction)** brings extensive experience managing large mechanical construction programs and ensures seamless coordination across project teams, subcontractors, and field operations.
- **Ryan Raves (Senior Project Manager)** and **Parker Yeakel (Project Manager)** have strong track records managing HVAC and chiller plant projects of similar scope, overseeing detailed scheduling, budgeting, subcontractor coordination, and issue resolution to maintain quality and safety compliance.
- **Emily Parks (Project Coordinator)** plays an essential role in organizing documentation, tracking schedules, coordinating materials and subcontractors, and ensuring clear communication among all project stakeholders.
- **Bob Phillips (General Superintendent)** and **Brett Walker (Project Superintendent)** deliver daily on-site leadership, supervising field crews and subcontractors, maintaining work sequencing, enforcing safety protocols, and ensuring construction adheres to plans and specifications.
- **Sean Wurster (Vice President, Health, Safety & Environment)** adds a dedicated level of safety oversight, ensuring subcontractors and field teams meet OSHA and industry requirements while promoting a culture of safe work practices.
- **Quinten Balmer (CAD Manager)** ensures that coordinated drawings and installation models are accurate, consistent, and fully aligned across all trades, enabling efficient field installation and minimizing conflicts.
- **Tom Murray (Account Manager – Chiller Department)** and **Matt Stover (Lead Chiller Mechanic)** provide specialized expertise in chiller disassembly, installation, and commissioning, coordinating closely with mechanical, electrical, controls, and rigging subcontractors to ensure proper system integration.

Together, this team demonstrates the depth of knowledge, coordination capability, and multidisciplinary experience required to successfully manage and execute a complex chiller system replacement project from start to finish.

➤ [Resumes](#)



***Tyler Wilson, PE***  
***Director of Engineering***



**Work History**

*Ainsworth Inc (formerly Enginuity)*

2023 – Present

Director of Engineering  
Director of Service Operations  
Service Operations Manager

*Enginuity, LLC*

2018 - 2022

Sales Engineer / Account Manager  
Project Engineer

**Education**

*Penn State University | 2018*

BS - Mechanical Engineering

*Shippensburg University | 2018*

BS - Applied Physics, Minor Mathematics

**Licenses**

Professional Engineer – Multiple States

PA - PE095630

MD - 64024

DE - 31245

**Affiliations**

Leadership Harrisburg Area

Harrisburg Young Professionals

West Shore Young Professionals

ASHRAE Central PA Chapter

Mechanical Service Contractors of America (MSCA)

Ainsworth Inc.  
203 Lynndale Court  
Mechanicsburg, PA 17050  
www.ainsworth.com

**Work Summary**

Mr. Wilson began his career in the mechanical industry with Enginuity, LLC in 2018. He has held roles within construction projects, service sales, operations management, and engineering.

In the role of Project Engineer, Mr. Wilson's primary function was to assist Project Managers with construction execution to remain on schedule and on budget. Responsibilities included: submittal management, change order pricing/negotiation/tracking, subcontractor coordination, and labor productivity tracking across all ongoing construction work.

As a Sales Engineer/Account Manager, Mr. Wilson oversaw a client maintenance contract base of approximately \$800k annually, spinning off total revenue of approximately \$3.2MM annually. Responsibilities included contract sales, project design and sales, estimating, subcontractor coordination, and project management.

As part of Enginuity's transition to Ainsworth in 2023, Mr. Wilson took the role of Service Operations Manager overseeing the day-to-day operations of the \$25MM+ service department. Core responsibilities include labor management (field and office), fleet management, P&L analysis, sales, estimating, and providing engineering assistance to salespeople and technicians. He was promoted to Director in 2024.

Later in 2024, Mr. Wilson obtained his Professional Engineer license in the state of Pennsylvania and switched roles to lead Ainsworth Mid-Atlantic's engineering work as the Director of Engineering. Primary responsibilities in this role include heat load analysis, system design, specifying equipment, and working with EITs and CAD Draftsmen on staff to develop design-build and special projects. Mr. Wilson also holds Professional Engineering licenses in Maryland and Delaware.

◆ **DEPENDABLE**  
◆ **ECO-FRIENDLY**  
◆ **TRUSTWORTHY**



**Jordan Rhen**  
**Estimating Manager**



**Work History**

*Ainsworth Inc*  
2023 – Present  
Estimating Manager

*W.G Tomko*  
2019 - 2023  
Site Superintendent/ PM

*Enginuity*  
2016-2019  
Project Manager

**Education**

*Northern Lebanon Jr./Sr High School*  
*Local Union 520 Apprenticeship*

**Licenses**

*Harrisburg Master Plumber*

**Affiliations**

*American Society of Professional Estimators*  
*Mechanical Contractors Association of America*  
*Local Union 520 Plumbers and Pipefitters*

Ainsworth Inc.  
203 Lynndale Court  
Mechanicsburg, PA 17050  
www.ainsworth.com

**Work Summary**

Mr. Rhen launched his career in 2006 by entering the Local 520 apprenticeship program, where he received his first assignment with W.G. Tomko.

As an apprentice with Tomko, Jordan quickly distinguished himself through his dedication and skill, earning a Foreman position on projects by his third year in the program.

During his apprenticeship, Mr. Rhen participated in the Pennsylvania Pipe Trades Competition, where he competed against top apprentices from across the state. His exceptional performance earned him the prestigious title of Pennsylvania '2011 Plumber of the Year.'

Following his apprenticeship, Mr. Rhen spent several years successfully managing a variety of projects at food manufacturing and healthcare facilities throughout Central Pennsylvania.

In 2016, Jordan joined Enginuity as a Project Manager and Field Labor Coordinator, where he was responsible for overseeing the entire construction labor force and managing multiple projects from planning through completion.

In 2019, Mr. Rhen returned to W.G. Tomko to lead the construction of the new Federal Courthouse in Harrisburg, PA. Originally planned as a shorter-term project, it evolved into a four-year endeavor due to COVID-19 restrictions and significant disruptions in the supply chain.

After completing the Federal Courthouse project in 2023, Mr. Rhen rejoined Ainsworth/Enginuity as the Estimating Manager. In this role, he leads the estimation of projects ranging from \$5,000 to \$80 million, including complex design-build initiatives across various sectors.

◆ **DEPENDABLE**  
◆ **ECO-FRIENDLY**  
◆ **TRUSTWORTHY**



**Tim Wolf**  
**Director of Construction**



**Work History**

*Ainsworth Inc (formerly Enginuity)*  
2024 – Present

- Director of Construction
- Sr Project Manager

*James Craft & Son, Inc*  
1998 - 2024

- Business Development/Sales Engineer
- Director of Mechanical Estimating
- Operations Mgr./Sr Project Mgr.
- Project Manager – Large Projects
- Project Manager – Special Projects
- Field Superintendent – HVAC/Plumbing

**Education**

P.E. in MD - BSME-University of Maryland  
Apprenticeships for both Sheet Metal & Plumbing.  
PMP Certification – Clemson University  
LEED AP Certification – Green Bldg. Tech for Adv Engineering  
ASHE – Healthcare Construction Certification

**Licenses**

Professional Engineer- MD  
Project Management Professional -PMP  
LEED Accredited Professional  
OSHA 30 hour Certified.  
Plumbing License  
ASHE – Healthcare Construction Certification

**Affiliations**

*Early to Rise Professionals*

Ainsworth Inc.  
203 Lynndale Court  
Mechanicsburg, PA 17050  
www.ainsworth.com

**Career Summary**

Mr. Wolf has been in the mechanical construction industry full time since 1992. His career path in the mechanical construction industry through the years has taken him from earning his Engineering degree, earning his journeyman's' through both the sheet metal and plumbing apprenticeships, and towards working his way through the various leadership positions while gaining decades of mechanical system and customer relationship experiences.

Mr. Wolf's motivation for the mechanical industry is to provide leadership of teams backed with integrity, communication, trustworthiness, and accountability. While continuing to provide a higher level of professionalism for further growth and reaching company goals while delivering above our client's expectations.

Mr. Wolf has gained decades of experience working through challenging projects ranging from \$500K up to \$35 Million in value, with various project types such as Laboratories, Clean Rooms, Large Healthcare Surgical Towers, Pharmaceutical and Manufacturing Plants.

During Mr. Wolf's career, he has built Teams who are able to innovate better communication formats to forecast planning between workforce, prefabrication shops, project coordination, purchasing, and design engineering departments. Delivered projects safely, as scheduled, and within the contract value by overseeing project teams, subcontractors, job cost reports, progress reports, change orders, and logs.

Mr. Wolf strives for continuous improvement for the customers benefit by identifying project team member's strengths and conducting value engineering reviews with the Team members.

Mr. Wolf's approach to overall project management exceeds customer expectations through collaboration and enforcing quality control through adherence to contractual obligations and listening.

- ◆ DEPENDABLE
- ◆ ECO-FRIENDLY
- ◆ TRUSTWORTHY



**Sean Wurster, CRSP**  
**Vice President, HSE**



**Work History**

*Ainsworth Inc*  
2024 – Present  
Vice President HSE

*Colas Canada Ltd.*  
2019 - 2024  
Corporate Director HSE

*Ainsworth Inc*  
2015 - 2019  
Director HSE

*Flynn Group of Companies*  
2007 – 2015  
Director of Health & Safety

**Education**

*University of New Haven | 2006*  
BS – Occupational Health and Safety

**Affiliations**

Board of Canadian Registered Safety Professionals  
Institution for Occupational Safety and Health  
Health and Safety Professionals Canada  
American Society of Safety Professionals

**Work Summary**

Mr. Wurster is a senior health, safety, and environment (HSE) executive with over 20 years of experience leading HSE strategy and operations across North America. As Vice President, Health, Safety and Environment at Ainsworth Inc., Mr. Wurster is responsible for overseeing the development and implementation of HSE programs that support a wide range of projects throughout Canada and the United States. These include multi-million-dollar capital projects exceeding \$100 million, as well as smaller-scale service, maintenance, and retrofit work in commercial, industrial, and institutional sectors.

Mr. Wurster provides strategic leadership to a team of HSE professionals, ensuring consistent execution of policies, compliance with regulatory requirements, and alignment with corporate objectives. His role involves managing risk across diverse operational environments, supporting both unionized and non-unionized workforces, and driving continuous improvement through data-informed decision-making and performance monitoring.

Before joining Ainsworth, Mr. Wurster held senior HSE leadership roles at Colas Canada and the Flynn Group of Companies, where he directed large-scale safety programs impacting thousands of employees and job sites across North America. His expertise includes enterprise-level HSE system implementation, legislative analysis, crisis response planning, and executive advisory on risk and compliance matters.

Throughout his career, Mr. Wurster has led HSE efforts across geographically dispersed and operationally complex organizations, maintaining a strong focus on standardization, accountability, and measurable outcomes across North American operations

Ainsworth Inc.  
203 Lynndale Court  
Mechanicsburg, PA 17050  
www.ainsworth.com

◆ **DEPENDABLE**  
◆ **ECO-FRIENDLY**  
◆ **TRUSTWORTHY**



**Tom Murray**  
**Central Heating and Cooling Plant**  
**Manager**



**Work History**

*Ainsworth Inc*  
*2018-Present*

*McClure Company*  
*2011-2018*

*York International*  
*1989-2011*

**Education**

*1985, Graduated from Red Land HS*

*1994, Completed Local 520*

*Apprenticeship*

*1995, York International Service Training*

*Countless other training and*  
*certifications along the way.*

**Licenses**

*Certified York International Master*

*Mechanic*

**Affiliations**

*Mechanical Contractors Association of America*

*Local Union 520 Plumbers and Pipefitters*

**Work Summary**

Started Carrer at Harrisburg Area CC in 1985

Started with Local 520 as an apprentice and sent to York International 1989. Worked on chiller and cooling plants throughout central pa in the industrial, commercial, healthcare and educational sectors. Worked the PM service agreement with DGS Central Plant from 1991 to 2011. Was a foreman during the DGS Central Plant YK Chiller install in 2007. Oversaw assembly of the new YK Chillers and Medium Voltage Drives. Started and commissioned the chillers and drives on that project. Started, commissioned and maintained chillers throughout the central pa region.

Accepted position as Chiller Service Manager for McClure Co in 2011. Provided support and managed chiller service team which serviced chillers and systems throughout all sectors in central PA including several DGS sites including the DGS Central Plant

Accepted position of Central Heating and Cooling Plant Project Manager with Enginuity/Ainsworth in 2018. Provided support and managed chiller and boiler service team as well as assisting other service account managers with chiller and boiler plant services in all service sectors. Recently acquired service agreement with DGS Central Plant and several other Harrisburg DGS buildings. Acquired and managed broad multi year service agreement with WellSpan Health System as well as GSK Pharmaceuticals, Harristown Property Services just to highlight a few.

Ainsworth Inc.  
203 Lynndale Court  
Mechanicsburg, PA 17050  
[www.ainsworth.com](http://www.ainsworth.com)

◆ **DEPENDABLE**  
◆ **ECO-FRIENDLY**  
◆ **TRUSTWORTHY**



**Matt Stover**  
**Chiller Mechanic**



**Education**

2004, PA College of Technology, Degree  
in Applied Science in HVAC tech.

2009, Completed Local Union 520  
Apprenticeship

2011-2023, Various Equipment  
certifications including York Chillers  
installation, Start up, and service.

2018, Factory Training for Johnson  
Controls FX Field Controller  
Engineering.

**Work Summary**

December, 2018 to Present – Enginuity/Ainsworth, 203  
Lynndale Court, Mechanicsburg, PA 17050

Supervisor: Tom Murray, Chiller Service

Job Title: Chiller Mechanic Journeyman

Duties include troubleshooting, servicing/maintaining, and starting up high- and low-pressure centrifugal chillers, screw chillers, reciprocating chillers, and scroll chillers. Service, troubleshooting, maintaining, and starting up ABB variable speed drives. Servicing and maintaining air handling units. Servicing and maintaining cooling towers. Install, setup, and service York E-Link BAS interface to York chillers.

Troubleshooting/maintaining and safety trained on York Medium Voltage variable speed drives. Servicing and maintaining York Magnetic Bearing YMC2 chillers. Service, maintain, and upgrade of Johnson Controls N2 BAS controllers. Service and maintain Tridium Niagara AX BAS control system. Service and maintain Trane CentraVac chiller controls. Service and maintain Pool Pak and Dectron indoor dehumidification pool units.

February, 2012 to December, 2018- McClure Company,  
4101 N. 6<sup>th</sup> St., Harrisburg, PA 17110

Supervisor: Tom Murray, Chiller Service Manager

Job Title: Chiller Mechanic Journeyman

Duties include troubleshooting, servicing/maintaining, and starting up high- and low-pressure centrifugal chillers, screw chillers, reciprocating chillers, and scroll chillers. Service, troubleshooting, maintaining, and starting up ABB variable speed drives. Servicing and maintaining air handling units. Servicing and maintaining cooling towers. Install, setup, and service York E-Link BAS interface to York chillers.

Troubleshooting/maintaining and safety trained on York Medium Voltage variable speed drives. Servicing and maintaining York Magnetic Bearing YMC2 chillers.

Ainsworth Inc.  
203 Lynndale Court  
Mechanicsburg, PA 17050  
www.ainsworth.com

◆ DEPENDABLE  
◆ ECO-FRIENDLY  
◆ TRUSTWORTHY



**Quinten Balmer**  
**CAD Manager**



**Work History**

*Ainsworth Inc (formerly Engenuity)*  
2024 – Present  
CAD Manager

Lugaila Mechanical Inc.  
2016 – 2024  
*Journeyman Plumber/Pipefitter*  
Foreman

Local 520  
2016 – Present  
*Journeyman Plumber/Pipefitter*  
Foreman

**Education**

Dauphin County Technical School  
Local 520 Apprenticeship

**Licenses**

Journeyman Plumber/Pipefitter  
Local Plumbing License  
Medical Gas Certified Installer  
OSHA 10/30

**Work Summary**

Mr. Balmer began his career in the mechanical industry in 2016 as an apprentice with the Local 520 Plumbers and Pipefitters Union. He successfully completed a comprehensive apprenticeship program, earning his journeyman status. Initially placed with Lugaila Mechanical, Mr. Balmer quickly demonstrated strong leadership and technical skills, earning a promotion to Foreman while still completing his apprenticeship.

Following his promotion to Foreman, Mr. Balmer led a wide range of construction projects, beginning with school renovations and new builds. Over the years, he gained extensive experience in commercial construction, developing strong organizational skills and a leadership style focused on uniting teams toward shared goals. As his expertise grew, he transitioned to more technically demanding projects, including expansions at the Bayer Pharmaceutical Plant and various food processing facilities across Pennsylvania. His work included long-term assignments at major plants such as Wolfgang Chocolate, Nestlé Purina, and multiple Hershey Chocolate facilities.

With a broad and diverse background in the construction industry, Mr. Balmer was recruited to join the Ainsworth team, taking on a multifaceted role that includes CAD Detailer/ Manager, and Fabrication Coordinator. His responsibilities involve high-level LOD 500 coordination throughout construction projects, bridging the gap between design and execution by producing fabrication-ready models and detailed construction drawings.



**Ryan Raves**  
**Sr. Project Manager**



**Work History**

*Ainsworth Inc (formerly Engenuity)*  
2022 – Present  
Project Manager

*Olde Mill Impressions*  
2011-2022  
Director of Operations

*Olde Mill Impressions*  
2001-2011  
Project Manager

**Education**

*Penn State University* 2003  
*HACC* 2001-2003

**Certificates**

PIPM (MCAA)  
Leadership Management Institute

**Work Summary**

Mr. Raves is a seasoned and results-oriented Project Manager with over 20 years of prior experience managing and operating a successful prior company. Mr. Raves brings a rare combination of executive leadership, field expertise, and project management acumen to every job. His deep understanding of mechanical systems, budgeting, scheduling, and team coordination allows him to drive projects forward with efficiency and precision.

Leveraging his background as an operations manager, Mr. Raves also possesses a strong grasp of company financials—including cost control, forecasting, and profitability—which informs sound decision-making across all phases of a project. In his current role, he continues to deliver outstanding results on complex commercial builds through industry knowledge, strong subcontractor relationships, and a hands-on approach to problem-solving. Mr. Raves is highly respected for his commitment to quality, safety, and client satisfaction, making him a valuable asset to any construction team.

A proven leader in mechanical construction, Mr. Raves consistently delivers with expertise, reliability, and results.



***Parker Yeakel***  
***Project Manager***



**Work History**

*Ainsworth Inc (formerly Engenuity)*  
2024 – Present  
Project Manager

*Ainsworth Inc (formerly Engenuity)*  
2022 - 2024  
Project Engineer Intern  
Project Engineer

**Education**

*Penn State University | 2023*  
BS - Mechanical Engineering

**Sample Projects Managed**

- *High-pressure compressed natural gas fueling stations (piping), including locations such as:*
  - o *Wilkes-Barre, PA*
  - o *Scranton, PA*
  - o *Pottsville, PA*
  - o *Hazleton, PA*
  - o *Boston, MA*
- *Williamsport Area School District – Boiler replacement (design/build)*
- *Hagerstown Volvo/Mack Truck Plant - Domestic water line replacement (2"-12" pipe)*

**Work Summary**

Mr. Yeakel began his career in the mechanical industry with Ainsworth Inc in 2022. He has held roles within engineering, and project management.

In the role of Project Engineer, Mr. Yeakel's primary function was to assist Project Managers with construction execution to remain on schedule and on budget. Responsibilities included: submittal management, change order pricing/negotiation/tracking, subcontractor coordination, and labor productivity tracking across all ongoing construction work.

As a Project Manager, Mr. Yeakel oversees all phases of construction projects from planning to completion, ensuring they are completed on time, within scope, and on budget. Coordinates with architects, engineers, contractors, and clients to define project requirements and timeline. Manages budgets, schedules, permits, procurement, safety compliance, and quality control. Resolves issues, mitigates risk, and ensures adherence to contractual requirements while maintaining clear communication among all parties involved.

Mr. Yeakel contributes to engineering efforts by performing heat load calculations, AutoCAD design work, and pipe & duct sizing.



**Emily Parks**  
**Construction Project Coordinator**



**Work History**

*Ainsworth Inc.*  
2024- Present  
Construction Project Coordinator

*Robillard, Inc.*  
2022-2023  
Contract Administrator  
Plumbing Project Coordinator

**Education**

*West Virginia University | 2021*  
BS – Recreation, Parks, and Tourism  
Resources

**Affiliations**

National Parks and Recreation Association  
National Association for Interpretation  
North American Association for Environmental  
Education

Ainsworth Inc.  
203 Lynndale Court  
Mechanicsburg, PA 17050  
[www.ainsworth.com](http://www.ainsworth.com)

**Work Summary**

Ms. Parks started her career in the mechanical industry in 2022 with Robillard, Inc. after transitioning from the parks and recreation industry. Since then, she's held roles within construction project coordination and administration.

In the role of Contract Administrator, Ms. Parks' primary function was to review and coordinate the execution of incoming contracts. While in this role, she implemented a standard internal subcontractor procedure. She also maintained all areas of compliance, including permitting, insurance, and safety documentation.

In 2023, Ms. Parks moved to a Plumbing Project Coordinator role where her responsibilities expanded to include creating and submitting RFIs, submittals, closeout documentation, change orders, and bid proposals. Most notably, she was heavily involved with the execution of Assembly Studios in Atlanta, GA, a \$2.5m contract for HVAC and plumbing with high quality control standards and schedule challenges. Through this role, she gained experience in all aspects of the project life cycle, from the initial bid to project completion.

After her time with Robillard, Inc., Ms. Parks moved to her current position of Construction Project Coordinator with Ainsworth Inc. in 2024. She has coordinated a wide array of projects, ranging from \$50k-\$10m. Her responsibilities include the creation and distribution of submittals and RFIs, administrative support for Project Managers, and maintaining project documentation.

Ms. Parks has been able to find success in the mechanical industry through her strong organizational, problem-solving, and communication skills. Her commitment to excellence ensures that all projects are well documented, executed efficiently, and produce high quality results.

◆ **DEPENDABLE**  
◆ **ECO-FRIENDLY**  
◆ **TRUSTWORTHY**



***Bob Phillips***  
***General Superintendent***



**Work History**

Ainsworth Inc  
2024 – Present  
General Superintendent

Lugaila Mechanical  
2012-2024  
Site Superintendent/ PM

W.G. Tomko  
2001-2012  
Site Superintendent

**Education**

*Susquenita HS.*  
*Local Union 520 Apprenticeship*

**Licenses**

*Harrisburg Plumber*  
*Medical Gas Installer*  
*OSHA 10/30*

**Affiliations**

*Mechanical Contractors Association of America*  
*Local Union 520 Plumbers and Pipefitters*

Ainsworth Inc.  
203 Lynndale Court  
Mechanicsburg, PA 17050  
[www.ainsworth.com](http://www.ainsworth.com)

**Work Summary**

Mr. Phillips began his career in 2001 by enrolling in the Local 520 apprenticeship program, where he received his first assignment with W.G. Tomko, laying the foundation for his future in the mechanical trades.

As an apprentice with W.G. Tomko, Mr. Phillips quickly stood out for his dedication and technical proficiency, earning a Foreman role on major projects by his fourth year in the program.

After completing his apprenticeship, Mr. Phillips successfully managed a wide range of projects across food manufacturing and healthcare facilities throughout Central Pennsylvania, demonstrating strong leadership and industry expertise.

In 2012, Mr. Phillips joined Lugaila Mechanical as a Site Superintendent, where he was responsible for supervising the construction workforce and managing multiple projects from initial planning through final completion.

In 2018, Mr. Phillips expanded his role at Lugaila Mechanical by taking on Project Management responsibilities for multiple projects, while continuing to serve as a Site Superintendent.

In 2024, Mr. Phillips joined Ainsworth as General Superintendent. In this role, he oversees all field labor operations and ensures seamless coordination between the fabrication shop, CAD department, and field teams. His leadership helps maintain high standards of craftsmanship and supports the timely, efficient installation of mechanical systems.

◆ **DEPENDABLE**  
◆ **ECO-FRIENDLY**  
◆ **TRUSTWORTHY**



**Brett walker**  
**Site Superintendent**



**Work History**

*W.G Tomko*  
1999 - 2024  
Site Superintendent

Enginuity/Ainsworth  
2024-present  
Site Superintendent

**Education**

New Oxford graduate 1997

Pennsylvania technical institute  
associates degree in hvac and a  
certificate license in plumbing.

*Local 520 Apprenticeship*

**Licenses**

*Harrisburg Master Plumber*

*Medical gas license*

*OSHA 10/30*

*UA Welding Certs*

**Work Summary**

Mr. walker started his career in 1997 at Penn Tech in Williamsport Pa. He graduated with honors and a reward for top pipefitter in his class. After Graduation he entered into local 520 to begin his apprenticeship.

As an apprentice with Mr. Walker was dispatched to W.G. Tomko where he would remain for the next several years. He was able to use hard work and dedication to establish a steady flow of work at Penn State main campus where he would build several high profile campus facilities over the years including the Edward Steidle Building for the Department of Materials Science and Engineering.

In 2017 W.G. Tomko opened a division in Baltimore Maryland and Mr. Walker was recruited to move south and be a foundation cornerstone member of the team. Mr. Walker spent the next few years successfully managing a variety of projects at various university research centers and healthcare facilities in the Maryland and Washington DC areas.

In 2024 Mr. Walker had the opportunity to move back to the Central Pa region and join the Ainsworth team where he has already managed a 10 million dollar Centre county government facility in just over a years time.

Ainsworth Inc.  
203 Lynndale Court  
Mechanicsburg, PA 17050  
www.ainsworth.com

◆ **DEPENDABLE**  
◆ **ECO-FRIENDLY**  
◆ **TRUSTWORTHY**

## Section T-2B Work Plan and Schedule

- Proposer addressed and discussed the critical issues for the specific contract identified in Section T-2B a) of the RFP
- Proposer demonstrated understanding of critical material and equipment, including an explanation of long lead items, and explained why these items are critical and how they will be managed and scheduled
- Proposer demonstrated understanding of construction challenges, proposed solutions and how their plan will minimize risk to the project
- Proposer described the site operations, logistics, jobsite controls and practices
- Proposer described the Information Technology solutions and systems Proposer intends to utilize for document control
- Schedule narrative describes challenges and proposed solutions and critical path
- Proposer's schedule is logical, credible and complete

Ainsworth will perform the required system shutdown and complete all tie-ins for the temporary chilled water connections. Conduct a 3D laser scan of the central plant to capture accurate existing-condition data for coordination and verification.

Install temporary chiller supply and return piping to the designated temporary chiller location. Place and start the temporary chillers to confirm operational readiness, including proper functionality of control interfaces, before initiating decommissioning of the existing units.

Isolate the existing chillers and associated controls scheduled for removal and prepare them for disassembly. Drain the isolated sections of the chilled water system and commence demolition activities. Demolition will follow a predetermined sequence designed to maintain access routes for equipment removal and delivery of new piping and components.

Perform supplemental 3D laser scanning as required to support prefabrication accuracy for new piping assemblies. Once all existing equipment and piping have been removed, begin transporting new components into the mechanical space.

The replacement chillers will arrive in modular sections to accommodate pathway constraints. Chiller assembly will begin with the chiller installation team while the piping team concurrently stages and installs prefabricated piping sections.

Piping installation will prioritize setting large-diameter mains first, followed by the installation of smaller-diameter distribution piping to complete system routing around the chillers. After installation, each piping section will undergo pressure testing, and all approved segments will be documented and insulated.

Upon completion of mechanical work, verify controls integration readiness and fill the new system with water. Final commissioning activities will include starting, running, and performance-testing the new chillers in coordination with the testing, adjusting, and balancing subcontractor to confirm system flow rates and temperature performance.

## 1. Project Milestones and Contract Duration

**Challenge:** Complex sequencing and milestone adherence under tight timelines.

**Proposed Solution:** Use critical path method scheduling, early procurement of long-lead items, and proactive risk mitigation strategies. We will also keep everyone up to date with weekly meetings for coordination.

**Contract duration:** 991 days

Key milestone dates (start, phased completions, final completion): All our work will fit within the given sequence in the project manual 013100

Activity	Start Day	Finish Day
Mobilization & Initial Job Conference	0	30
Long-Lead Equipment Submittals	0	28
Long-Lead Equipment Procurement	30	180
Coordination Drawings	14	90
Temporary Chillers Installation & Operation	31	205
Plant Isolation & Shutdown	206	338
Demolition of Existing Chillers #3, # 4 and #5	206	338
New Piping & Pumps Installation	206	338
New Chillers #3 & #4 Operational	339	368
Remove Temporary Cooling Equipment	368	368
New Chiller #5 Operational	369	442
Commissioning of Chilled Water System	443	503
Final Inspection & Punch List	976	991

## 2. HVAC Scope of Work Details

**Temporary chillers:** 3 units, Aggreko RTAF 500 air-cooled screw chillers, 500 nominal tons each

**Replacement chillers:** 3 York centrifugal chillers, Model YKPCPLK2\_EBH, 1,200 tons each, R-513A refrigerant, 460V/3-phase/60Hz, operating weight ~53,533 lbs, dimensions approx. 21 ft L x 9.4 ft W x 11 ft H, MCA 1106A, Max breaker 1600A, AHRI certified, ASHRAE 90.1 compliant

**Pumps:** 4 Grundfos KPVS chilled water pumps, 3,666 GPM @ 180 ft head, 250 HP, 460V/3-phase/60 Hz; 2 Grundfos KPVS condenser water pumps, 7,410 GPM @ 73.4 ft head, 200 HP, 460V/3-phase/60 Hz

**Controls and chemical treatment modifications (details):** Johnson Controls will provide BAS integration, control valves, flow meters, pump and cooling tower controls, and chemical treatment system integration.

### 3. Procurement and Long-Lead Items

**Challenge:** Delays in delivery of critical equipment such as chillers and pumps can impact the schedule.

**Proposed Solution:** Place orders immediately upon approval, monitor vendor schedules, and maintain contingency plans with alternate suppliers if needed/wanted.

### 4. Site Logistics and Constraints

**Challenge:** Jobsite is in a highly visible, publicly accessible campus with limited staging areas and strict security requirements.

#### Proposed Solutions:

**Site access and staging areas:** Adequate space will be required for crane setup, counterweight trailers, and rigging operations. Clear access routes must be maintained for delivery trucks and crane movement.

**Rigging and crane requirements:** Dickinson Crane Service will provide multiple cranes for different tasks: Rough Terrain Crane for chiller lifts; Hydraulic Truck Crane for vault installation (60,000 lbs. at 70' radius); Rough Terrain Crane for pipe lifts (capacity 5,600 lbs at 80' radius).

**Public access and safety considerations:** Walkways and any areas within crane operating radius will be safely diverted. Barricades and signage will be installed to protect pedestrians and site personnel.

**Delivery and storage plans:** Just-in-time deliveries will be coordinated to minimize laydown space. Staging areas will be designated for temporary equipment and prefabricated piping.

### 5. Temporary Systems Plan

**Challenge:** Maintain continuous operation of chilled water systems and other critical systems during demolition and installation phases.

**Proposed Solution:** We will install temporary chillers and pumps with integrated controls to ensure uninterrupted service during transitions.

**Temporary chilled water plant setup:** 3 Aggreko RTAF 500T air-cooled chillers (~1,500 tons total), pumps, piping

**Temporary power and controls integration:** Single-point 460V/60Hz/3-phase per unit, MCA ~934A, MOP ~1000A

## 6. Coordination and Communication

**Challenge:** Multiple prime contractors working concurrently increases risk of schedule conflicts and scope overlaps. Risk of miscommunication and document loss across multiple teams and platforms.

### Proposed Solutions:

**Weekly meeting schedules:** We will attend weekly meetings to coordinate and work with other contractors, as well as keeping the project schedule throughout the demolition process and new installations.

**Communication tools and platforms (e.g., e-Builder):** We will and have used many platforms for digital documentation and communication such as Procore, PlanGrid, Autodesk Construction Cloud, Bluebeam, Revit and others to track submittals, quality control, RFI's, test reports etc. We will use whatever is necessary to ensure a smooth process.

**Coordination protocols with other prime contractors:** We will have BIM Coordination with the other contractors as well as scheduled meetings and lift plans and any plans for the shutdown work.

Through careful planning, we will do what is necessary to keep the integrity of the existing buildings and their systems intact.

## 7. Systems Testing and Commissioning

**Challenge:** Complex integration of BAS, chillers, pumps, and optimization algorithms.

### Proposed Solutions:

**Procedures for testing, balancing, and commissioning all HVAC systems:** Johnson Controls will perform BAS programming, integration, and commissioning, including monitoring for temporary systems and full integration of new York chillers, pumps, and cooling towers.

**Integration with BAS and verification of control sequences:** Johnson Controls will update Metasys GUI, trends, alarms, and OptimumLOOP algorithms for plant optimization.

**Documentation of performance tests and final acceptance criteria:** Includes technical programming, checkout, startup, and 80 hours of commissioning assistance with Optimum Energy.

We will provide assistance as needed in the commissioning process.

## **8. Additional Information**

**Challenge:** Extreme temperatures, precipitation, and high winds can delay critical activities like concrete work and crane operations.

### **Proposed Solutions:**

#### **HVAC Contract Contingency Plan with Weather Constraints**

##### **1. Purpose**

To minimize weather-related disruptions and maintain project schedule integrity during the HVAC system replacement and upgrades at the PA Capitol Complex Central Chiller Plant.

##### **2. Weather Constraints Impacting HVAC Work**

- **Cold Weather (Below 40°F / 4°C):**
  - Restrictions on concrete placement and curing for foundations, pads, and equipment bases.
  - Temporary heating required for enclosed spaces and equipment rooms (e.g., elevator machine room, electrical vault).
  - Safety risks for workers during excavation, shoring, and installation.
- **Hot Weather (Above 85°F / 29°C):**
  - Accelerated concrete curing requires shading and moisture control.
  - Heat stress mitigation for workers during mechanical and electrical installation.
  - Potential impact on sensitive equipment and materials during storage and installation.
- **Rain, Snow, and Moisture:**
  - Delays in excavation, trenching, and underground electrical vault construction.
  - Protection of electrical equipment, temporary chillers, and HVAC components from water damage.
  - Erosion and sediment control measures required on site.
  - Temporary roads and paved areas must be maintained for safe access.
- **High Winds:**
  - Suspension of crane and hoisting operations for HVAC equipment and electrical gear.

- Secure temporary fencing, tree protection zones, and construction trailers.

### **3. Preventive Measures**

- **Planning and Scheduling:**

- Monitor weather forecasts daily and adjust work sequences accordingly.
- Schedule critical concrete work and plant isolation during favorable weather windows.
- Prioritize indoor and weather-independent tasks during adverse weather.

- **Site and Equipment Protection:**

- Use temporary enclosures, tarps, and heating/cooling equipment to protect work areas and materials.
- Implement erosion and sediment control per specifications and county conservation district requirements.
- Maintain temporary utilities (power, water, heat) as specified.

- **Safety and Compliance:**

- Follow OSHA and local regulations for cold weather protection and worker safety.
- Coordinate with commissioning agent and other contractors to minimize weather-related risks.

### **4. Response Actions**

- **Cold Weather:**

- Provide temporary heat in equipment rooms and enclosures (e.g., elevator machine room, electrical vault).
- Use cold-weather concrete admixtures and curing blankets for HVAC equipment pads and foundations.

- **Hot Weather:**

- Provide shade and hydration stations for workers.
- Use curing compounds and wind breaks to control concrete curing.

- **Rain/Snow:**

- Suspend excavation and concrete work during heavy precipitation.
- Use pumps and drainage to keep work areas dry.
- Reschedule outdoor work as needed.

- **High Winds:**

- Halt crane and hoisting operations when wind speeds exceed safety limits.
- Inspect and reinforce temporary fencing and tree protection zones.

## 5. Communication and Documentation

- Maintain daily weather logs and work status reports.
- Document all weather-related delays and mitigation efforts.
- Hold regular coordination meetings to review weather impacts and adjust plans.

**Environmental or historic preservation considerations:** We will comply with all environmental protection requirements and historic preservation guidelines outlined in the project manual. Implement dust, vibration, and noise control measures; protect historic finishes and structures during rigging and demolition. We will ensure the proper disposal of refrigerants and chemicals per EPA and DEP standards.

### Section T-2C Safety Plan

- Proposer’s knowledge and understanding of the capabilities of all skills, trades, and subcontractors and their corresponding on-site safety requirements and also compliance with OSHA and applicable state safety requirements

#### **Ainsworth Inc. – Health and Safety Program and Project Customization**

Ainsworth Inc. recognizes that the responsibility for health and safety is shared across all levels of the organization. All employees, customers, subcontractors, and visitors are required to comply with Ainsworth Inc.’s Health and Safety Policy and procedures. We are committed to:

- Assessing, understanding, and managing risk
- Enabling a positive safety culture and promoting mutual accountability
- Supporting employee health and wellbeing
- Empowering all personnel to work safely
- Recognizing every worker’s right to a safe workplace
- Intervening when unsafe conditions or behaviors are observed
- Preventing workplace incidents and minimizing accident risks
- Learning from both successes and incidents, and sharing lessons learned
- Collaborating with suppliers, partners, and workers to achieve best practices
- Continuously improving by setting measurable HSE objectives
- Complying with all legislative and regulatory requirements

Ainsworth Inc. maintains a robust Health and Safety Management System that is essential to creating and sustaining a safe work environment for our employees and subcontractors. This system is focused on reducing incidents, promoting compliance, and driving continuous improvement. Our approach includes:

### **Management Commitment and Leadership**

Health and safety are core values at Ainsworth Inc. Leadership at all levels is accountable for safety outcomes. We maintain a full-time team of Health and Safety professionals across Canada and the United States. Management ensures all workers have the necessary training, PPE, and tools to work safely.

### **Employee Involvement and Participation**

We promote employee engagement through active participation in safety committees, regular toolbox talks, and a culture that encourages feedback and collaboration on safety improvements.

### **Incident Reporting and Investigation**

We have established systems for reporting all types of incidents. Every incident is investigated to determine root causes, and corrective actions are shared company-wide to prevent recurrence and strengthen our safety practices.

### **Project-Specific Customization of the Safety Plan**

Ainsworth Inc. ensures full compliance with all applicable federal, state, and local safety regulations, including those set forth by the Pennsylvania Department of Labor & Industry and the U.S. Occupational Safety and Health Administration (OSHA).

For this project, Ainsworth Inc. will customize its Health and Safety Plan to address the unique conditions, scope of work, client requirements, and regulatory environment. Specific customization strategies include:

- **Site-Specific Safety Orientation:**  
All workers, subcontractors, and visitors will receive a tailored orientation covering project-specific hazards, emergency procedures, site logistics, and client protocols.
- **Task-Specific Risk Assessments (JHA/FLRA):**  
We will perform daily Field Level Risk Assessments and Job Hazard Analyses specific to the tasks and conditions on this site, using our eCompliance safety management platform.
- **Collaboration:**  
We will work closely with the client's safety representatives to align our safety procedures, participate in joint safety meetings, and ensure all project goals are met collaboratively.
- **Emergency Response Plan (ERP):**  
A comprehensive, site-specific ERP will be developed and communicated to all personnel, ensuring readiness for any emergency scenario unique to the site conditions and environment.
- **Performance Monitoring and Reporting:**  
We will implement and track project-specific safety KPIs, both leading and lagging

indicators, and use the data to adapt strategies and ensure continuous safety performance improvement.

By combining our corporate Health and Safety Management System with these strategies, Ainsworth Inc. will deliver a safe, compliant, and efficient work environment that meets and exceeds project-specific requirements.

### **Section T-2D Quality Control Plan**

- Proposer demonstrated an understanding of the complexities of this project and possesses the capabilities, to accomplish, coordinate and manage the project tasks, to monitor and report project tasks and deliverables, to control project costs and to maintain the project schedule

#### **Ainsworth Inc, Quality Control Plan**

The purpose of our Quality Control Plan (QCP) is to ensure that our Construction Team conducts and completes this project in accordance with contract specifications and drawings. Our Quality Control Team (QCT) has the responsibility for ensuring that this project is completed in accordance with the contract.

##### *Proactive Prevention Plan for Documenting Quality Control Procedures:*

- Review and Management of all quality control documentation is the direct responsibility of our QCT.
- The QCT or their Designee shall be responsible for completing the following:
  - Complete Daily Reports as required of work completed on the site every day.
  - Maintain Testing Logs of everything done on site and from off site, independent testing laboratories as applicable.
  - Maintain an Advisory Log to include all advisory notices, Non-conformance Reports, and Corrective Action Requests issued to us. The log will include recipients, distribution date, date of correction and action done.
  - Constantly Inspect the quality and completeness of the work being performed by all Employees and sub-contractors maintaining the utmost adherence to drawings, specifications, codes, OSHA, and other subcontract requirements.
  - Submit Request for Information (RFI) for any discrepancy in the drawings and/or specifications, including suggestive measures of how to proceed.
  - Ensure that all Record Drawings, including as-built drawings, are kept up to date and reviewed weekly.
  - Conduct 3<sup>rd</sup> party Tests as required by contract documents and submit reports to engineering agency.

Ainsworth Utilizes PlanGrid, and Microsoft project integrated with Microsoft Excell for tracking of Submittals, RFI's, and Test report logs. These logs remain available for Owners, Construction Managers, and General Contractors throughout the project execution.

*Our Quality Control Team will consist of the following members:*

**BIM Modeling and Coordination- Quinten Balmer,** Quinten will ensure all piping is laid out according to codes and allow necessary maintenance clearance to ensure longevity of the systems.

**Fabrication Shop- Doug Boring,** Doug keeps our shop running efficiently and maintains quality production by tracking each, and every piece of pipe and fitting that comes in and goes out. He also follows strict testing procedures and invites 3<sup>rd</sup> party testing agencies access to our facility to ensure they are happy with all the welding and testing procedures as they are happening.

**Field Installation- Brett Walker,** With Brett's experience, he is able to maintain quality installations of these systems while keeping up with the fast pace of today's construction industry. Brett understands the importance of installation testing and tracking these test reports to ensure all parties involved are confident in the final product before turnover.

**Reports and Tracking- Emily Parks,** as project coordinator Emily will be the final Ainsworth employee handling the testing documentation and providing this information to the Owners construction team. Emily's attention to detail will ensure all the necessary information is properly provided at the first submission of reports.

### TECHNICAL SECTION 3 - STAFFING PLAN

#### Section T-3A Staffing Resources

- Proposer's ability to demonstrate that it and its subcontractors have adequate resources to provide a timely, reliable and adequate supply of workers in all necessary crafts in order to complete this project safely and on schedule

Information for T-3A is combined with T-3B.

#### Section T-3B Skill Training

- Proposer has explained the steps taken to provide a work force that has been properly trained and prepared to perform the Work on the contract.

Ainsworth will utilize its existing qualified skilled employees as needed to staff the project, as well as Plumbers, Pipefitters, and HVACR Service Technicians Local Union 520, for all additional manpower needs. Local 520 has over 1,000 working men and women, including over 150 registered apprentices, who are properly trained to meet the demands of today's construction market and advances in trade technology. Local 520 uses a daily dispatch system for the referral of journey persons and apprentices to signatory contractors. Local 520 also utilizes a nationwide network of skilled plumbers and pipefitters for those times when the local workforce is temporarily insufficient for a project's manpower needs.

The Plumbers, Pipefitters, and HVACR Service Technicians of Local Union 520 have served Central Pennsylvania for over a century. Their members have built many military bases, power plants, factories, hospitals, and many learning institutions. Penn State University, Hershey Chocolate, Three Mile Island, Indiantown Gap National Guard Base, and many other

facilities. In today's world, they are the leader in piping systems of all kinds. There is a new industrial and construction market that seems to be on the upswing.

Local 520 will be there to answer the call to deliver skilled craftsmen to move into the future. They believe in continuing education with practical application. Training is available to apprentices and ongoing journeyman upgrades, in order to keep up with the ever-changing technology of the 21st century and beyond. They will continue to be the workforce of choice through education and the philosophy of 8 hours of work for eight hours of pay, completed on time and within budget.

The mission of the Local 520 Training Department is to provide the building trades with a highly skilled, certified workforce through current and relevant classroom, shop, and on-the-job training for apprentice and journeyman plumbers, pipefitters, pipe welders, and HVAC service technicians. The Plumbers and Pipefitters LU520 Apprenticeship School has standards of apprenticeship on file with the U.S. Department of Labor. Inquiries regarding this registration should be addressed to:

**U.S. Department of Labor, Bureau of Apprenticeship and Training**  
170 S. Independence Mall West, Suite 820 East  
Philadelphia, PA 19106

The Plumbers and Pipefitters LU520 Apprentice School is also accredited with the Council on Occupational Education. Inquiries regarding this accreditation should be addressed to:

**The Council on Occupational Education**  
7840 Roswell Road Building 300, Suite 325  
Atlanta, GA 30350

Apprentices are **required** to obtain 9,000 hours of on-the-job training and classroom training. Journey person training is available year-round to all members of Local 520.

Construction Curriculum by year:

**YEAR ONE**

- Science 25.50
- Materials 29.75
- Mathematics 89.25
- Introduction to Rigging 25.50
- Copper 8.50
- PVC 8.50
- Heritage 12.00
- Orientation 8.50
- OSHA30 30.00
- Standards for Excellence & UA Heritage 8.50

**YEAR TWO**

- Food Grade Stainless Weld 17.00
- Welding & Fab #2 17.00

- Drawing 42.50
- Gas Installations 25.50
- Hydronics 25.50
- Pumps 42.50
- Heritage 12.00
- Orientation 8.50
- Victaulic 8.50
- Tech in the Trade 17.00

### **YEAR THREE**

- Air Conditioning 25.50
- Aquatherm 8.50
- Drainage 29.75
- CPR First Aid/CPR 8.50
- Plumbing Fixture & Water Supply 25.50
- Steam 59.50
- Heritage 12.00
- Orientation 8.50
- Tube Bending 8.50
- Welding & Fab #3 29.75

### **YEAR FOUR**

- Aquatherm 8.50
- Crane Signaling 34.00
- Swadgelok 8.50
- Welding & Fab #4 85.00
- Heritage 12.00
- Orientation 8.50
- Plumbing Code 42.50
- Food Grade Stainless Weld 17.00

### **YEAR FIVE**

- Tube Bending 4.25
- Medical Gas 68.00
- Rigging 85.00
- Welding & Fab #5 38.25
- Heritage 12.00
- Orientation 8.50

## Section T-3C Workforce Safety

- Proposer has explained their firm’s workforce safety training program(s) and/or safety certification programs including but not limited to their worker’s comp risk factor.

### Workforce Safety Training and Incident Avoidance Programs

Ainsworth Inc. is committed to ensuring that all employees possess the knowledge, skills, and abilities required to perform their work safely. This is achieved through comprehensive and ongoing safety training, which includes onboarding for new hires, refresher courses, and equipment- or task-specific instruction.

To foster a safe working environment, both Ainsworth Inc. and its subcontractors actively participate in a wide range of workforce safety training and certification programs for craft labor personnel. Training frequency is based on the course type and provider requirements.

#### Core Safety Training and Certification Programs Include:

- Employee Safety Training Programs
- Hazard Identification and Risk Assessment
- Emergency Preparedness Programs
- Equipment Safety Training
- Occupational Health and Wellness Programs

#### Specific Courses Offered:

- OSHA 10-Hour and 30-Hour Training
- First Aid / CPR / AED
- Fall Protection
- Confined Space Entry
- Lockout/Tagout (LOTO)
- Aerial Lift Operation
- Driver and Vehicle Safety

Ainsworth Inc. fosters a proactive safety culture rooted in continuous improvement and risk mitigation. Our approach emphasizes training, accountability, hazard awareness, and shared responsibility at all levels of the organization. The following key programs support incident and accident avoidance on all project sites:

#### Safety and Risk Mitigation Programs:

- **Jobsite Hazard Analysis (JHA) / Field Level Risk Assessment (FLRA):**  
Employees are required to perform FLRAs through our **eCompliance safety management software**. A competent person conducts a hazard assessment before starting any job, especially when the scope changes or new hazards are identified. The FLRA tool is used to outline tasks, assess hazards, and establish control measures—ensuring risks are mitigated before work begins.

- **Site-Specific Safety Orientation:**  
All workers receive a project-specific orientation covering the scope of work, site conditions, emergency procedures, reporting protocols, and PPE requirements. This ensures that every team member is aligned with the safety expectations of the project.
- **Safety Audits and Inspections:**  
Regular safety inspections are conducted by operational support staff, safety personnel, and onsite supervisors to identify and correct potential hazards before incidents occur. These audits ensure compliance with safety protocols and foster continuous improvement.

Through these structured programs and a culture of proactive engagement, Ainsworth Inc. ensures that safety remains the foundation of every project we undertake.

**Workers' Compensation Risk Factor / EMR (Experience Modification Rate):**

Ainsworth Inc. maintains a strong safety performance record, reflected in our low Experience Modification Rate (EMR). Our current EMR is 0.772 which is below the industry average, indicating a lower-than-average frequency and severity of workplace injuries. This is a direct result of our robust safety management system and proactive incident prevention strategies.

**Safety Performance Metrics:**

In addition to our EMR, Ainsworth Inc. tracks and reports key safety performance indicators such as the Total Recordable Incident Rate (TRIR) and Lost Time Incident Rate (LTIR). These metrics are used internally to monitor performance and externally to demonstrate our commitment to jobsite safety.

**TECHNICAL SECTION 4 - SUPPORTING DOCUMENTATION****Section T-4A Proposal Signature Page (Appendix A)****APPENDIX A  
PROPOSAL SIGNATURE PAGE**

**Proposer's Representations and Authorizations.** Proposer by signing this Proposal Signature page and submitting its proposal understands, represents, acknowledges, and certifies that:

- a. All information provided by, and representations made by, the Proposer in the proposal are material and important and will be relied upon by the Proposal Evaluation Committee in reviewing the Proposal and by DGS in awarding the contract. Any misrepresentation of a material fact or omission of material fact by the entity submitting the proposal shall be treated as fraudulent concealment from the Commonwealth of the true facts relating to the submission of the proposal. If the misrepresentation and/or omission of material fact is discovered during the review of the proposal, the proposal will be automatically disqualified. Discovery of the misrepresentation and/or omission of material fact after contract award constitutes grounds for defaulting on the contractor and may lead to debarment procedures being instituted against the contractor. A misrepresentation shall be punishable under 18 Pa. C.S. § 4904.
- b. The proposer acknowledges that they have received, read and understood all Addenda issued for the Project.
- c. The price and amount of this proposal have been arrived at independently and without consultation, communication or agreement with any other Proposer or potential Proposer.
- d. Neither the price nor the amount of the proposal, and neither the approximate price nor the approximate amount of this proposal, have been disclosed to any other firm or person who is a Proposer or potential Proposer, and they will not be disclosed on or before the proposal submission deadline specified in the Notice to Proposers and the Calendar of Events.
- e. No attempt has been made or will be made to induce any firm or person to refrain from submitting a proposal on this contract, or to submit a proposal higher than this proposal, or to submit any intentionally high or noncompetitive proposal or other form of complementary proposal.
- f. The proposal is made in good faith and not pursuant to any agreement or discussion with, or inducement from, any firm or person to submit a complementary or other noncompetitive proposal.
- g. To the best knowledge of the person signing the proposal for the Proposer, the Proposer, its affiliates, subsidiaries, officers, directors, and employees are not currently under investigation by any local, state or federal governmental agency and

have not in the last four (4) years been convicted or found liable for any act prohibited by State or Federal law in any jurisdiction, involving conspiracy or collusion with respect to bidding or proposing on any public contract, except as disclosed by the Proposer in its proposal.

- h. To the best of knowledge of the person signing the proposal for the Proposer and except as otherwise disclosed by the Proposer in its proposal, the Proposer has no outstanding, delinquent obligations to Commonwealth including, but not limited to, any state tax liability not being contested on appeal or other obligation of the Proposer that is owed to Commonwealth.
- i. The Proposer is not currently under suspension or debarment by Commonwealth, or any other local, state, or the federal government. If the Proposer cannot so certify, then it shall submit along with its proposal a written explanation of why it cannot make such certification.
- j. The Proposer has not, under a separate contract with the DGS made any recommendations to DGS concerning the need for the services described in the proposal or the specifications for the services described in the proposal.
- k. Each Proposer, by submitting its proposal, authorizes all Commonwealth agencies to release to Commonwealth information related to liabilities to Commonwealth of Pennsylvania including, but not limited to, taxes, unemployment compensation, workers' compensation liabilities and Prevailing Wage Act.
- l. Until the selected Proposer receives a fully executed and approved written contract from the DGS, there is no legal and valid contract in law or in equity, and the Proposer should not begin to perform work. If a Letter of Intent has been issued, the Proposer may proceed in accordance with the terms of the Letter.
- m. Proposer is not currently engaged and will not during the duration of the contract engage, in a boycott of a person or an entity based in or doing business with a jurisdiction which the Commonwealth is not prohibited by Congressional statute from engaging in trade or commerce; and is eligible to contract with the Commonwealth under Section 3604 of the Procurement Code.
- n. The proposer agrees and certifies to abide by, but not be limited to, the Commonwealth of Pennsylvania Acts, Provisions, Clauses, and Statements stated in the Contract Documents.

I am authorized to sign this proposal on behalf of the Proposer and I agree and state that Ainsworth Incorporated (Name of Firm) understands and acknowledges that the above representations are material and important, and will be relied upon by the Proposal Evaluation Committee and the Department of General Services in awarding the contract(s) for which this proposal is submitted. I understand and my firm understands that any misstatement shall be treated as fraudulent concealment from the Department of General Services of the true facts relating to the submission of this proposal.


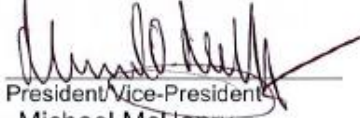
**PROPOSER IS A CONTRACTOR/INDIVIDUAL:**

~~Witness: \_\_\_\_\_ By: \_\_\_\_\_  
Contractor / Individual~~

**PROPOSER IS A LIMITED LIABILITY COMPANY (LLC) OR PARTNERSHIP:**

~~Witness: \_\_\_\_\_ By: \_\_\_\_\_  
General Partner / Authorized LLC Member  
By: \_\_\_\_\_  
Limited Partnership~~

**PROPOSER IS A CORPORATION:**

Attest: By:  \_\_\_\_\_  
Secretary/Treasurer  
By:  \_\_\_\_\_  
President Vice-President  
Michael McHenry

**PROPOSER IS A JOINT VENTURE:**

~~Attest: By: \_\_\_\_\_  
Secretary \_\_\_\_\_ President \_\_\_\_\_  
Attest: \_\_\_\_\_ By: \_\_\_\_\_  
Secretary \_\_\_\_\_ President \_\_\_\_\_~~

**Section T-4B Non-Collusion Affidavit (Appendix B)**

**NONCOLLUSION AFFIDAVIT**

State of Pennsylvania : DGS Project Number: DGS C-9048-0090 Phase3  
County of Cumberland : s.s.

I state that I am the Estimating manager (Title) of Ainsworth Incorporated (Name of Firm) and that I am authorized to make this affidavit on behalf of my firm, and its owners, directors, and officers. I am the person responsible in my firm for the prices(s) and the amount of this proposal.

I state that:

1. The price(s) and amount of this proposal have been arrived at independently and without consultation, communication or agreement with any other contractor, proposer, or potential proposer.
2. Neither the price(s) nor the amount of this proposal, and neither the approximate price(s) nor approximate amount of this proposal, have been disclosed to any other firm or person who is a proposer or potential proposer, and they will not be disclosed before the proposal submission date.
3. No attempt has been made or will be made to induce any firm or person to refrain from proposing on this contract, or to submit a proposal higher than this proposal, or to submit any intentionally high or noncompetitive proposal or other form of complementary proposal.
4. The proposal of my firm is made in good faith and not pursuant to any agreement or discussion with, or inducement from, any firm or person to submit a complementary or other noncompetitive proposal.
5. Ainsworth Incorporated (Name of Firm) its affiliates, subsidiaries, officers, directors, and employees are not currently under investigation by any governmental agency and have not in the last three years been convicted or found liable for any act prohibited by state or federal law in any jurisdiction, involving conspiracy or collusion with respect to proposing and/or bidding on any public contract, except as follows:

None

I state that Ainsworth Incorporated (Name of Firm) understands and acknowledges that the above representations are material and important, and will be relied upon by the Department of General Services in awarding the contract(s) for which this proposal is submitted. I understand and my firm understands that any misstatement in this affidavit is and shall be treated as fraudulent concealment from the Department of General Services of the true facts relating to the submission of this proposal.

Jordan Rhen  
(Signature)

Jordan Rhen  
(Signatory's Printed Name)

Estimating Manager  
(Signatory's Title)

SWORN TO AND SUBSCRIBED  
BEFORE ME THIS 14th DAY OF  
January, 2026

Chloe Castranio  
Notary Public

My Commission Expires  
April 5, 2028

Commonwealth of Pennsylvania - Notary Seal  
Chloe Castranio, Notary Public  
Cumberland County  
My commission expires April 5, 2028  
Commission number 1445723  
Member, Pennsylvania Association of Notaries

**APPENDIX G  
DESIGNATED CRITICAL WORK  
QUALIFICATIONS STATEMENT**

**COVER SHEET**

DGS Project Name Capitol Complex Central Plant- Building Renovations, Chiller System Replacement

DGS Project Number DGS C-0948-0090 Phase 3

**DESIGNATED CRITICAL WORK: For proper evaluation, the Proposer MUST submit at least one "Designated Critical Work Qualification Statement" for each Work item listed in T-1C for the respective contract. NOTE: The selected Proposer shall enter subcontracts with each listed subcontractor in T-1C.**

Check One Work item for which this Qualification Statement is being submitted:

General Construction (.1 contract)

- Below grade utility (electrical) vault, below grade tunneling
- High security (impact) bollards
- Freight elevator
- Structural correction repair (plant and cooling tower)
- Multiple prime contract coordination and sequencing of work

HVAC Construction (.2 contract)

- Temporary chilled water systems
- Water-cooled chillers and system pumps
- Central plant piping and valve demolition and replacement (steam, chilled and condenser water)
- HVAC central plant controls and optimization strategy
- Testing, adjusting, and balancing
- Chemical Treatment

Electrical (.4 contract)

- Switchgear (main-tie-main with automatic transfer and closed transition transfer)
- Coordination of multiple voltage distribution (medium/low)
- Substations
- Duct bank (vault and tunnel)
- Busway feeders
- Fire pumps
- Panelboards
- Power conditioning and uninterruptible power supply
- Variable frequency drives
- Short-circuit, coordination, arc flash study

Name of Firm Aggreko LLC

Address \_\_\_\_\_

Principal Office 4607 West Admiral Doyle Drive, New Iberia, LA 70560

Owner or Authorized Representative Matt Connearney

**SECTION 1 – FIRM INFORMATION**

1.1 Background Information

a) How many years has the firm been in business? 25

b) How many years has the firm been doing business in the proposed contract field? 25

Under what former names has the firm conducted business?

\_\_\_\_\_  
\_\_\_\_\_  
\_\_\_\_\_  
\_\_\_\_\_

c) Identify all jurisdictions in which the firm is licensed or otherwise qualified to do business.

North America      \_\_\_\_\_      \_\_\_\_\_  
\_\_\_\_\_      \_\_\_\_\_      \_\_\_\_\_

d) If the firm is a corporation, provide the following information:

Date of incorporation 12/31/2001  
State of incorporation Delaware  
President's name Laura Nador  
Vice President's name(s) Charley Royce  
Secretary's name \_\_\_\_\_  
Treasurer's name \_\_\_\_\_

e) If the firm is a partnership, provide the following information:

Date of formation \_\_\_\_\_  
Type of partnership \_\_\_\_\_  
Names of partners \_\_\_\_\_

f) If the firm is individually owned, provide the following information:

Date of formation \_\_\_\_\_  
Name of owner \_\_\_\_\_

g) If the form of the firm is other than those listed above, describe it and name the principals:

\_\_\_\_\_  
\_\_\_\_\_

## SECTION 2 - EXPERIENCE AND PERFORMANCE

### 2.1 General

- a) Provide the annual construction volume in dollars completed by the firm in the past three years:
- Year 2025 \$ 67,450,646  
Year 2024 \$ 64,589,053  
Year 2023 \$ 62,399,047
- b) Identify the percentage of work on similar projects the firm typically performs with its own work force 75
- c) List the categories of work that the firm normally performs with its own forces on similar projects.  
**Set-up, Start-up, and maintaining proper operation for duration of project as needed.**

### 2.2 Project Experience and References

Submit as **Attachment 1** to this Qualifications Statement:

- a) Suggested number of Sheets/Pages:

- 3 sheets/(6 pages)

Three (3) detailed project descriptions for relevant projects similar in size and scope to the Contract Work. The project descriptions shall include, at a minimum, the following information presented in the order listed below:

- vii. Name of project, type of project and location
- viii. Description of the project and relevance of work to the Contract Work
- ix. Contact information for an owner representative familiar with the firm's work performed on this project. Include name, address, telephone number(s) and e-mail address.
- x. The original bid/proposal price and the final contract price. If the project is ongoing, project the final price and relation to proposal price. Contract value for which the firm was/is responsible.
- xi. The original date for project completion and the actual completion date. If the project is ongoing, project the completion date and relation to original schedule.
- xii. As available, performance ratings of the work evaluated by owner or owner's representative.

### 2.3 Contractor Safety Record

Submit as **Attachment 2** to this Qualifications Statement the information specified herein and verify this information by providing copies of OSHA 300/200 Forms or appropriate documentation from insurance carriers, as applicable. The firm may submit written explanations to comment on or clarify its safety record.

- a) Provide the firm's Workers Compensation Experience Modification Rating for the past three years, beginning with the most recent year available:

Year 1:	<u>2025</u>	<u>0.81</u>
Year 2:	<u>2024</u>	<u>0.79</u>
Year 3:	<u>2023</u>	<u>0.90</u>

- b) Provide the firm's Total Lost Workday Incidence Rate (LWDIR) for the past three years, beginning with the most recent year available:

Year 1:	<u>2024</u>	<u>.06</u>
Year 2:	<u>2023</u>	<u>.19</u>
Year 3:	<u>2022</u>	<u>.20</u>

\*LWDIR Rate = Number of Lost Time Injuries & Illnesses x 200,000 ÷ Total Hours Worked

- c) Provide the firm's Recordable Incidence Rate (RIR) for the past three years:

Year 1:	<u>2024</u>	<u>.70</u>
Year 2:	<u>2023</u>	<u>.50</u>
Year 3:	<u>2022</u>	<u>.87</u>

\*RIR Rate = Number of Injuries x 200,000 ÷ Total Hours Worked

- d) Provide in an **Attachment 3** to this Qualifications Statement a list of any health or safety citations issued by federal or state agencies for serious or willful violations issued in the past 3 years. Include a separate statement for any such violations and include the citation number, a brief description of the violation and the amount of penalty, if any, for each violation and current status of violation.

### **SECTION 3 - REQUIRED DISCLOSURES**

The firm shall answer the following questions with regard to the past three (3) years. If any question is answered in the affirmative, the firm shall submit in an **Attachment 5** to this Qualifications Statement, for each affirmative answer, a written explanation which shall provide details concerning the matter in question, including applicable dates, locations, names of projects/project owners and current status of any such matter.

- 3.1 Is the firm currently debarred or suspended from doing business with any federal, state or local government agency or private entity?  
Yes \_\_\_ No X
- 3.2 Has the firm ever been debarred or suspended from doing business with any federal, state or local government agency or private entity?  
Yes \_\_\_ No X
- 3.3 Is the firm currently or has the firm been otherwise prohibited from doing business with any federal, state or local government agency or private entity?  
Yes \_\_\_ No X
- 3.4 Has the firm been denied prequalification (not including short listing), declared non-responsible, or otherwise declared ineligible to submit bids or proposals for work by any federal, state or local government agency or private entity?  
Yes \_\_\_ No X
- 3.5 Has the firm defaulted, been terminated for cause or otherwise failed to complete any project that it was awarded?  
Yes \_\_\_ No X

- 3.6 Has the firm been assessed or required to pay liquidated damages in connection with work performed on any project?  
Yes \_\_\_ No X
- 3.7 Has the firm had any business or professional license, registration, certificate or certification suspended or revoked?  
Yes \_\_\_ No X
- 3.8 Have any liens been filed against the firm as a result of its failure to pay subcontractors, suppliers, or workers?  
Yes \_\_\_ No X
- 3.9 Has the firm been denied bonding or insurance coverage or been discontinued by a surety or insurance company?  
Yes \_\_\_ No X
- 3.10 Has the firm been found in violation of any laws, including but not limited to contracting or antitrust laws, tax or licensing laws, labor or employment laws or environmental laws by a final decision of a court or government agency?  
Yes \_\_\_ No X
- \*Note: information regarding health and safety violations is addressed in a previous section.
- 3.11 Has the firm or its owners, officers, directors or managers been the subject of any criminal indictment or criminal investigation concerning any aspect of the firm's business?  
Yes \_\_\_ No X
- 3.12 Has the firm been subject to any bankruptcy proceeding?  
Yes \_\_\_ No X

#### **SECTION 4 - REQUIRED REPRESENTATIONS**

In submitting this Qualifications Statement, along with the other representations and authorizations listed in the RFP, the firm also makes the following representations, which it understands are required as a condition of performing the Contract Work and receiving payment for same.

- 4.1 The firm will possess all applicable professional, business and trade licenses required for performing the Contract Work.
- 4.2 The firm satisfies all bonding and insurance requirements as stipulated in the solicitation for the Contract Work.
- 4.3 The firm and all subcontractors it employs in execution of the Contract Work shall be in full compliance with the Commonwealth's requirements for workers' compensation insurance according to all applicable laws, and unemployment insurance according to all applicable laws.
- 4.4 The firm and all subcontractors it employs in execution of the Contract Work shall be in full compliance with all requirements of the Commonwealth's prevailing wage law and Public Works Employment Verification Act.

- 4.5 If awarded the Contract Work, the firm represents that it will not exceed its current bonding limitations when the Contract Work is combined with the total aggregate amount of all unfinished work for which the Contractor is responsible.
- 4.6 The firm represents that it has no conflicts of interests with the Commonwealth of Pennsylvania and, if awarded the Contract Work, any potential conflicts of interest that may arise in the future will be disclosed immediately to the Department of General Services.
- 4.7 The firm represents the price offered in connection with its proposal for the Contract Work was arrived at independently without consultation, communication or agreement with any other Proposer or competitor.
- 4.8 The firm will ensure that employees and applicants for employment are not discriminated against because of their race, color, religion, sex or national origin.

## **Projects of similar size and scope.**

Simon Property Group – Langhorne, PA – 5/23-8/23 - \$533K

Their existing water cooled chillers went down and needed emergency cooling onsite.

We were able to get 2 x 200T chillers, 2 x pumps, all hoses and cables, a generator, fuel for the duration, and distribution onsite to provide the cooling required.

Aggreko provided the labor to run all hoses and cables to the mechanical room on the 2<sup>nd</sup> floor. Others completed wall coring, final mechanical and electrical connections.

Hershey Milton School – Hershey, PA – 9/24-5/25 - \$532K

While doing renovation work, 2 x 500T chillers were required to be onsite on standby.

2 x trailer mounted 500T chillers with onboard pumps were provided along with cables.

No Aggreko technical service was required other than to help identify contacts for controls, startup, and orientation. Hard piping was provided by others.

LVHN -Allentown, PA – 12/25-ongoing

While doing renovation work, 2 x 500T chillers were required to be onsite, one running and one redundant.

2 x trailer mounted 500T chillers with onboard pumps were provided along with cables.

All mechanical lines were hard piped by others. All cables were run by others. Aggreko technical assistance included orientation and startup.



November 11, 2025

Aggreko Holdings, Inc.  
4607 W. Admiral Doyle Dr.  
New Iberia, LA 70560

Re: Experience Modification Rating [EMR]

To Whom it May Concern:

We are pleased to provide three years of Experience Modification Ratings for Aggreko as follows:

- **2022 EMR 0.71 effective 12/01/2022 to 12/01/2023**
- **2023 EMR 0.90 effective 12/01/2023 to 12/01/2024**
- **2024 EMR 0.79 effective 12/01/2024 to 12/01/2025**
- **2025 EMR 0.81 effective 12/01/2025 to 12/01/2026**

Please note the above ratings are based on the Mod Factor from the National Council on Compensation Insurance, Inc. [NCCI].

Thank you for this opportunity to be of service to your account. We trust you will feel free to contact our office with any questions.

Sincerely,

*Diann Willis*

Diann Willis  
Account Executive

CC: Chris Mulvey

**RE: 2022 Aggreko OSHA Citation Explanation****Citation number: 1574797**

To whom it may concern,

In January 2022, an employee was seriously injured while working on a 60kW generator. With the fan guard removed and the fan blades still rotating, the employee attempted to spray lubricant onto a pulley. He got too close, and the blade struck his right hand. This resulted in the loss of part of his index finger.

Following the incident, Aggreko contacted the local OSHA office to report the partial amputation. As a result, Aggreko received an Other Than Serious citation.

In response to this incident, Aggreko implemented the following Corrective Measures:

- A local safety stand down with focus on Safety Leadership, Energy Safety Rules, Isolation, Lock Out Tag Out and Machine Guarding was held with the team at the location where the incident occurred.
- A North American wide safety stand down was held throughout the business with the same focus.
- The incident and corrective actions were again communicated to the North American business in a February 2022 HSE monthly safety meeting.
- North American Managers conducted a series of several facility walks and employee interactions across the business focusing on LOTO and Machine Guarding.
- The Lead Technician Role was examined, redefined, and reintroduced with an emphasis on defining accountability, mentorship and providing HSE leadership to the team.
- Aggreko created a video recounting the incident and the corrective actions and identifying the proper troubleshooting techniques for the task that the employee was performing when the injury occurred. This video was distributed to the entire Aggreko global business.

Aggreko recognizes our responsibility for assuring all personnel go home injury free at the end of every workday. We are confident that our business has become more risk averse because of this unfortunate incident.

Aggreko appreciates your business and looks forward to providing your temporary utility needs now and in the future.

Regards,

Huey Bourque  
Head of HSE



**RE: 2024 Aggreko OSHA Other than Serious Citation Explanation**

**Citation number: 1778910**

**Chicago, IL**

To whom it may concern,

In September 2024, a technician was testing a 1500 cfm Dryer. The dryer was being filled by a 1500cfm compressor when a safety valve projected out of the unit and hit the purge muffler then the ground. The technician was approximately two or three feet from the dryer, when he was hit by the large volume of air released from the 1 1/2" hole.

Following the incident, Aggreko will provide training for technicians that work with this specific equipment. OSHA conducted an inspection, and it was determined that no OSHA standard applied, and no citation will be issued for this hazard. An Other-than-Serious citation was issued for not reporting an in-patient hospitalization within 24 hours.

In response to this incident, Aggreko implemented the following Corrective Measures:

- Aggreko has reviewed and educated managers about the OSHA requirements for reporting an in-patient hospitalization and the definition of the standard.

Aggreko recognizes our responsibility for assuring all personnel go home injury free at the end of every workday. We are confident that our business has become more risk averse because of this incident.

Aggreko appreciates your business and looks forward to providing your temporary utility needs now and in the future.

Regards,

Huey Bourque  
Head of HSE



# OSHA's Form 300 (Rev. 01/2004) Log of Work-Related Injuries and Illnesses

Attention: This form contains information relating to employee health and must be used in a manner that protects the confidentiality of employees to the extent possible while the information is being used for occupational safety and health purposes.

Year 2024  
U.S. Department of Labor  
Occupational Safety and Health Administration

You must record information about every work-related injury or illness that involves loss of consciousness, restricted work activity or job transfer, days away from work, or medical treatment beyond first aid. You must also record significant work-related injuries and illnesses that are diagnosed by a physician or licensed health care professional. You must also record work-related injuries and illnesses that meet any of the specific recording criteria listed in 29 CFR 1904.8 through 1904.12. Feel free to use two lines for a single case if you need to. You must complete an injury and illness incident report (OSHA Form 301) or equivalent form for each injury or illness recorded on this form. If you're not sure whether a case is recordable, call your local OSHA office for help.

Form approved OMB no. 1218-0176

Establishment name Aggreko, LLC  
City New Iberia State LA

Identify the person		Describe the case				Classify the case				Enter the number of days the injured or ill worker was:							
(A) Case No.	(B) Employee's Name	(C) Job Title (e.g., Welder)	(D) Date of injury or onset of illness (mo./day)	(E) Where the event occurred (e.g., Loading dock north end)	(F) Describe injury or illness, parts of body affected, and object/substance that directly injured or made person ill (e.g., Second degree burns on right forearm from acetylene torch)	CHECK ONLY ONE box for each case based on the most serious outcome for that case:				Enter the number of days the injured or ill worker was:		Check the "injury" column or choose one type of illness:					
						Death	Days away from work	Remained at work		Away From Work (days)	On job transfer or restriction (days)	(M)					
						(G)	(H)	Job transfer or restriction	Other recordable cases	(K)	(L)	Injury	Skin Disorder	Respiratory Condition	Poisoning	Hearing Loss	All other illnesses
								(I)	(J)			(1)	(2)	(3)	(4)	(5)	(6)
1		Technician	1/26/2024	Service Center	Slipped off of trailer, hit head, stitches			X			11	X					
2		Technician	2/14/2024	Office	Tripped same level, resulted in shoulder dislocation				X			X					
3		Technician	2/28/2024	Service Center	Working with tools, pry bar slipped hitting jaw				X			X					
4		Technician	4/20/2024	Customer Site	Handling sheet metal, sheet slipped resulting in cutting of hand			X			10	X					
5		Technician	5/1/2024	Service Center	Working with tools, removed glove, cut finger, stitches			X			3	X					
6		Technician	5/31/2024	Customer Site	Gripping sheet metal, grip slipped resulting in laceration of left hand, stitches				X			X					
7		Technician	6/1/2024	Customer Site	Working with tools, removed glove, cut finger, stitches				X			X					
8		Technician	7/31/2024	Service Center	Working with tools, not wearing proper gloves, cut to fingers				X			X					
9		Technician	8/5/2024	Service Center	Tripped on shoelace while in bed of truck, hit head			X			18	X					
10		Technician	9/19/2024	Service Center	Safety valve deployed, multiple injuries		X				66	X					
11		Project Manager	10/26/2024	Customer Site	Oncoming vehicle hit employees UTV, neck and shoulder soreness				X			X					
12		Technician	11/6/2024	Customer Site	Tripped over ground rod in rainy conditions, sprain			X			49	X					
<b>Page totals</b>						<b>0</b>	<b>1</b>	<b>5</b>	<b>6</b>	<b>66</b>	<b>91</b>	<b>12</b>	<b>0</b>	<b>0</b>	<b>0</b>	<b>0</b>	<b>0</b>

Be sure to transfer these totals to the Summary page (Form 300A) before you post it.

Public reporting burden for this collection of information is estimated to average 14 minutes per response, including time to review the instruction, search and gather the data needed, and complete and review the collection of information. Persons are not required to respond to the collection of information unless it displays a currently valid OMB control number. If you have any comments about these estimates or any aspects of this data collection, contact: US Department of Labor, OSHA Office of Statistics, Room N-3644, 200 Constitution Ave, NW, Washington, DC 20210. Do not send the completed forms to this office.

# OSHA's Form 300A (Rev. 01/2004) Summary of Work-Related Injuries and Illnesses

Year 2024



U.S. Department of Labor  
Occupational Safety and Health Administration

Form approved OMB no. 1218-0176

All establishments covered by Part 1904 must complete this Summary page, even if no injuries or illnesses occurred during the year. Remember to review the Log to verify that the entries are complete.

Using the Log, count the individual entries you made for each category. Then write the totals below, making sure you've added the entries from every page of the log. If you had no cases write "0."

Employees former employees, and their representatives have the right to review the OSHA Form 300 in its entirety. They also have limited access to the OSHA Form 301 or its equivalent. See 29 CFR 1904.35, in OSHA's Recordkeeping rule, for further details on the access provisions for these forms.

## Number of Cases

Total number of deaths	Total number of cases with days away from work	Total number of cases with job transfer or restriction	Total number of other recordable cases
0	1	5	6
(G)	(H)	(I)	(J)

## Number of Days

Total number of days away from work	Total number of days of job transfer or restriction
66	91
(K)	(L)

## Injury and Illness Types

Total number of... (M)			
(1) Injury	12	(4) Poisoning	0
(2) Skin Disorder	0	(5) Hearing Loss	0
(3) Respiratory Condition	0	(6) All Other Illnesses	0

Post this Summary page from February 1 to April 30 of the year following the year covered by the form

Public reporting burden for this collection of information is estimated to average 58 minutes per response, including time to review the instruction, search and gather the data needed, and complete and review the collection of information. Persons are not required to respond to the collection of information unless it displays a currently valid OMB control number. If you have any comments about these estimates or any aspects of this data collection, contact: US Department of Labor, OSHA Office of Statistics, Room N-3644, 200 Constitution Ave, NW, Washington, DC 20210. Do not send the completed forms to this office.

## Establishment information

Your establishment name Aggreko, LLC  
 Street 4607 W Admiral Doyle Dr.  
 City New Iberia State Louisiana Zip 70560  
 Industry description (e.g., Manufacture of motor truck trailers)  
Equipment Rental / Leasing  
 Standard Industrial Classification (SIC), if known (e.g., SIC 3715)  
7 3 5 9  
 OR North American Industrial Classification (NAICS), if known (e.g., 336212)  
5 3 2 4 9 0

## Employment information

Annual average number of employees 1,474  
 Total hours worked by all employees last year 3,411,202

Sign here

*Huey Bourque*

Knowingly falsifying this document may result in a fine.

I certify that I have examined this document and that to the best of my knowledge the entries are true, accurate, and complete.

Huey Bourque  
 Company executive  
337-367-7884  
 Phone

HSE Manager  
 Title  
1/15/2025  
 Date

# OSHA's Form 300 (Rev. 01/2004) Log of Work-Related Injuries and Illnesses

**Attention:** This form contains information relating to employee health and must be used in a manner that protects the confidentiality of employees to the extent possible while the information is being used for occupational safety and health purposes.

Year 2022  
**U.S. Department of Labor**  
 Occupational Safety and Health Administration



You must record information about every work-related injury or illness that involves loss of consciousness, restricted work activity or job transfer, days away from work, or medical treatment beyond first aid. You must also record significant work-related injuries and illnesses that are diagnosed by a physician or licensed health care professional. You must also record work-related injuries and illnesses that meet any of the specific recording criteria listed in 29 CFR 1904.8 through 1904.12. Feel free to use two lines for a single case if you need to. You must complete an injury and illness incident report (OSHA Form 301) or equivalent form for each injury or illness recorded on this form. If you're not sure whether a case is recordable, call your local OSHA office for help.

Form approved OMB no. 1218-0176

Establishment name Aggreko, LLC  
 City New Iberia State LA

Identify the person		Describe the case				Classify the case											
(A) Case No.	(B) Employee's Name	(C) Job Title (e.g., Welder)	(D) Date of injury or onset of illness (mo./day)	(E) Where the event occurred (e.g. Loading dock north end)	(F) Describe injury or illness, parts of body affected, and object/substance that directly injured or made person ill (e.g. Second degree burns on right forearm from acetylene torch)	CHECK ONLY ONE box for each case based on the most serious outcome for that case:				Enter the number of days the injured or ill worker was:		Check the "injury" column or choose one type of illness:					
						Death	Days away from work	Remained at work		Away From Work (days)	On job transfer or restriction (days)	(M)					
								Job transfer or restriction	Other recordable cases			Injury	Skin Disorder	Respiratory Condition	Poisoning	Hearing Loss	All other illnesses
						(G)	(H)	(I)	(J)	(K)	(L)	(1)	(2)	(3)	(4)	(5)	(6)
1		Technician	1/19/2022	At Shop	Moving/Rotating Equipment, finger caught in radiator fan blade.				X			X					
2		Sales Rep	2/16/2022	At Contractor Site	Working at Heights, extension ladder slipped while climbing down		X			169	11	X					
3		SelecTech	2/27/2022	At Customer Site	Pinch Points, finger caught between boxes				X			X					
4		Technician	3/24/2022	At Shop	Projectiles, muffler separated from the base of equipment		X			81	30	X					
5		Technician	5/17/2022	At Shop	Power/Hand Tools, utility knife slipped while cutting rubber gasket			X			48	X					
6		Technician	6/27/2022	At Shop	Sharp Edge, utility knife dropped while in use			X			5	X					
7		Technician	7/8/2022	At Customer Site	Working at Heights, lost footing off of a drop deck trailer		X			84		X					
8		Technician	7/13/2022	At Customer Site	Falling Objects, carrying objects overhead			X			69	X					
9		Technician	9/19/2022	At Customer Site	Slips/Trips Same Level, stepped into a deep unmarked hole in the grass			X			41	X					
10		Technician	10/5/2022	At Shop	Power/Hand Tools, swinging tool to remove a part			X			76	X					
11		Technician	10/5/2022	At Shop	Projectiles, tossing cable into a bin a lug nut flew off			X			40	X					
12		Technician	10/21/2022	At Customer Site	Sharp Edge, looking in coworkers tool bag, sharp edge				X			X					
13		Technician	11/30/2022	At Shop	Slips/Trips Same Level, tripped over grate in the washbay			X			23	X					
<b>Page totals</b>						<b>0</b>	<b>3</b>	<b>7</b>	<b>3</b>	<b>334</b>	<b>343</b>	<b>13</b>	<b>0</b>	<b>0</b>	<b>0</b>	<b>0</b>	<b>0</b>

Be sure to transfer these totals to the Summary page (Form 300A) before you post it.

Public reporting burden for this collection of information is estimated to average 14 minutes per response, including time to review the instruction, search and gather the data needed, and complete and review the collection of information. Persons are not required to respond to the collection of information unless it displays a currently valid OMB control number. If you have any comments about these estimates or any aspects of this data collection, contact: US Department of Labor, OSHA Office of Statistics, Room N-3644, 200 Constitution Ave, NW, Washington, DC 20210. Do not send the completed forms to this office.

Injury (1)  
 Skin Disorder (2)  
 Respiratory Condition (3)  
 Poisoning (4)  
 Hearing Loss (5)  
 All other illnesses (6)

# OSHA's Form 300A (Rev. 01/2004) Summary of Work-Related Injuries and Illnesses

Year 2022



U.S. Department of Labor  
Occupational Safety and Health Administration

Form approved OMB no. 1218-0176

All establishments covered by Part 1904 must complete this Summary page, even if no injuries or illnesses occurred during the year. Remember to review the Log to verify that the entries are complete

Using the Log, count the individual entries you made for each category. Then write the totals below, making sure you've added the entries from every page of the log. If you had no cases write "0."

Employees former employees, and their representatives have the right to review the OSHA Form 300 in its entirety. They also have limited access to the OSHA Form 301 or its equivalent. See 29 CFR 1904.35, in OSHA's Recordkeeping rule, for further details on the access provisions for these forms.

## Number of Cases

Total number of deaths	Total number of cases with days away from work	Total number of cases with job transfer or restriction	Total number of other recordable cases
<u>0</u>	<u>3</u>	<u>7</u>	<u>3</u>
(G)	(H)	(I)	(J)

## Number of Days

Total number of days away from work	Total number of days of job transfer or restriction
<u>334</u>	<u>343</u>
(K)	(L)

## Injury and Illness Types

Total number of... (M)			
(1) Injury	<u>13</u>	(4) Poisoning	<u>0</u>
(2) Skin Disorder	<u>0</u>	(5) Hearing Loss	<u>0</u>
(3) Respiratory Condition	<u>0</u>	(6) All Other Illnesses	<u>0</u>

Post this Summary page from February 1 to April 30 of the year following the year covered by the form

Public reporting burden for this collection of information is estimated to average 58 minutes per response, including time to review the instruction, search and gather the data needed, and complete and review the collection of information. Persons are not required to respond to the collection of information unless it displays a currently valid OMB control number. If you have any comments about these estimates or any aspects of this data collection, contact: US Department of Labor, OSHA Office of Statistics, Room N-3644, 200 Constitution Ave. NW, Washington, DC 20210. Do not send the completed forms to this office.

## Establishment information

Your establishment name Aggreko, LLC

Street 4607 W Admiral Doyle Dr.

City New Iberia State Louisiana Zip 70560

Industry description (e.g., Manufacture of motor truck trailers)  
Equipment Rental / Leasing

Standard Industrial Classification (SIC), if known (e.g., SIC 3715)  
7 3 5 9

OR North American Industrial Classification (NAICS), if known (e.g., 336212)  
5 3 2 4 9 0

## Employment information

Annual average number of employees 1250

Total hours worked by all employees last year 2,997,330

Sign here

Knowingly falsifying this document may result in a fine.

I certify that I have examined this document and that to the best of my knowledge the entries are true, accurate, and complete.

Huey Bourque  
Company executive

HSE Manager  
Title

337-367-7884  
Phone

1/23/2023  
Date

# OSHA's Form 300 (Rev. 01/2004) Log of Work-Related Injuries and Illnesses

**Attention:** This form contains information relating to employee health and must be used in a manner that protects the confidentiality of employees to the extent possible while the information is being used for occupational safety and health purposes.



You must record information about every work-related injury or illness that involves loss of consciousness, restricted work activity or job transfer, days away from work, or medical treatment beyond first aid. You must also record significant work-related injuries and illnesses that are diagnosed by a physician or licensed health care professional. You must also record work-related injuries and illnesses that meet any of the specific recording criteria listed in 29 CFR 1904.8 through 1904.12. Feel free to use two lines for a single case if you need to. You must complete an injury and illness incident report (OSHA Form 301) or equivalent form for each injury or illness recorded on this form. If you're not sure whether a case is recordable, call your local OSHA office for help.

Form approved OMB no. 1218-0176

Establishment name Aggreko, LLC  
City New Iberia State LA

Identify the person		Describe the case				Classify the case											
(A) Case No.	(B) Employee's Name	(C) Job Title (e.g., Welder)	(D) Date of injury or onset of illness (mo./day)	(E) Where the event occurred (e.g. Loading dock north end)	(F) Describe injury or illness, parts of body affected, and object/substance that directly injured or made person ill (e.g. Second degree burns on right forearm from acetylene torch)	CHECK ONLY ONE box for each case based on the most serious outcome for that case:				Enter the number of days the injured or ill worker was:		Check the "injury" column or choose one type of illness:					
						Death	Days away from work	Remained at work		Away From Work (days)	On job transfer or restriction (days)	(M)					
								Job transfer or restriction	Other recordable cases			Injury	Skin Disorder	Respiratory Condition	Poisoning	Hearing Loss	All other illnesses
						(G)	(H)	(I)	(J)	(K)	(L)	(1)	(2)	(3)	(4)	(5)	(6)
1		Utility Technician	1/4/2023	At local service center	Working at heights, slipped off of ladder		X			92	88	X					
2		Utility Technician	2/6/2023	At local service center	Falling object, piece of overhead door fell onto worker			X			7	X					
3		Technician	4/24/2023	At local service center	Working at heights, stepping down off of trailer		X			204		X					
4		Technician	7/25/2023	At local service center	Hand Tools, opened valve with nitrogen			X			16	X					
5		Technician	9/7/2023	At local service center	Falling object, working overhead gasket slipped and hit face/lip			X			3	X					
6		Technician	9/7/2023	At local service center	Working with Electricity, burn on hand			X			3	X					
7		Technician	8/1/2023	Customer Site	Moving/Rotating Equipment, cranking equipment, heard pop in shoulder		X			81		X					
8		Technician	12/8/2023	Customer Site	Pinch points, gust of wind caused equipment door to slam shut on hand			X			8	X					
<b>Page totals</b>						<b>0</b>	<b>3</b>	<b>5</b>	<b>0</b>	<b>377</b>	<b>125</b>	<b>8</b>	<b>0</b>	<b>0</b>	<b>0</b>	<b>0</b>	<b>0</b>

Be sure to transfer these totals to the Summary page (Form 300A) before you post it.

Public reporting burden for this collection of information is estimated to average 14 minutes per response, including time to review the instruction, search and gather the data needed, and complete and review the collection of information. Persons are not required to respond to the collection of information unless it displays a currently valid OMB control number. If you have any comments about these estimates or any aspects of this data collection, contact: US Department of Labor, OSHA Office of Statistics, Room N-3644, 200 Constitution Ave, NW, Washington, DC 20210. Do not send the completed forms to this office.

Injury (1)  
 Skin Disorder (2)  
 Respiratory Condition (3)  
 Poisoning (4)  
 Hearing Loss (5)  
 All other illnesses (6)

# OSHA's Form 300A (Rev. 01/2004) Summary of Work-Related Injuries and Illnesses

Year 2023



U.S. Department of Labor  
Occupational Safety and Health Administration

Form approved OMB no. 1218-0176

All establishments covered by Part 1904 must complete this Summary page, even if no injuries or illnesses occurred during the year. Remember to review the Log to verify that the entries are complete

Using the Log, count the individual entries you made for each category. Then write the totals below, making sure you've added the entries from every page of the log. If you had no cases write "0."

Employees former employees, and their representatives have the right to review the OSHA Form 300 in its entirety. They also have limited access to the OSHA Form 301 or its equivalent. See 29 CFR 1904.35, in OSHA's Recordkeeping rule, for further details on the access provisions for these forms.

## Number of Cases

Total number of deaths	Total number of cases with days away from work	Total number of cases with job transfer or restriction	Total number of other recordable cases
<u>0</u>	<u>3</u>	<u>5</u>	<u>0</u>
(G)	(H)	(I)	(J)

## Number of Days

Total number of days away from work	Total number of days of job transfer or restriction
<u>377</u>	<u>125</u>
(K)	(L)

## Injury and Illness Types

Total number of... (M)			
(1) Injury	<u>8</u>	(4) Poisoning	<u>0</u>
(2) Skin Disorder	<u>0</u>	(5) Hearing Loss	<u>0</u>
(3) Respiratory Condition	<u>0</u>	(6) All Other Illnesses	<u>0</u>

Post this Summary page from February 1 to April 30 of the year following the year covered by the form

Public reporting burden for this collection of information is estimated to average 58 minutes per response, including time to review the instruction, search and gather the data needed, and complete and review the collection of information. Persons are not required to respond to the collection of information unless it displays a currently valid OMB control number. If you have any comments about these estimates or any aspects of this data collection, contact: US Department of Labor, OSHA Office of Statistics, Room N-3644, 200 Constitution Ave. NW, Washington, DC 20210. Do not send the completed forms to this office.

## Establishment information

Your establishment name Aggreko, LLC

Street 4607 W Admiral Doyle Dr.

City New Iberia State Louisiana Zip 70560

Industry description (e.g., Manufacture of motor truck trailers)  
Equipment Rental / Leasing

Standard Industrial Classification (SIC), if known (e.g., SIC 3715)  
7 3 5 9

OR North American Industrial Classification (NAICS), if known (e.g., 336212)  
5 3 2 4 9 0

## Employment information

Annual average number of employees 1,277

Total hours worked by all employees last year 3,128,043

Sign here

Knowingly falsifying this document may result in a fine.

I certify that I have examined this document and that to the best of my knowledge the entries are true, accurate, and complete.

Huey Bourque  
Company executive

HSE Manager  
Title

337-367-7884  
Phone

1/15/2024  
Date

**APPENDIX G  
DESIGNATED CRITICAL WORK  
QUALIFICATIONS STATEMENT**

**COVER SHEET**

DGS Project Name Capitol Complex Central Plant- Building Renovations, Chiller System Replacement

DGS Project Number DGS C-0948-0090 Phase 3

**DESIGNATED CRITICAL WORK: For proper evaluation, the Proposer MUST submit at least one "Designated Critical Work Qualification Statement" for each Work item listed in T-1C for the respective contract. NOTE: The selected Proposer shall enter subcontracts with each listed subcontractor in T-1C.**

Check One Work item for which this Qualification Statement is being submitted:

General Construction (.1 contract)

- Below grade utility (electrical) vault, below grade tunneling
- High security (impact) bollards
- Freight elevator
- Structural correction repair (plant and cooling tower)
- Multiple prime contract coordination and sequencing of work

HVAC Construction (.2 contract)

- Temporary chilled water systems
- Water-cooled chillers and system pumps
- Central plant piping and valve demolition and replacement (steam, chilled and condenser water)
- HVAC central plant controls and optimization strategy
- Testing, adjusting, and balancing
- Chemical Treatment

Electrical (.4 contract)

- Switchgear (main-tie-main with automatic transfer and closed transition transfer)
- Coordination of multiple voltage distribution (medium/low)
- Substations
- Duct bank (vault and tunnel)
- Busway feeders
- Fire pumps
- Panelboards
- Power conditioning and uninterruptible power supply
- Variable frequency drives
- Short-circuit, coordination, arc flash study

Name of Firm Ainsworth Incorporated  
Address 203 Lynndale Court, Mechanicsburg, Pa. 17050  
Principal Office 131 Bermondsey Rd, Toronto, Ontario, M4A 1X4  
Owner or Authorized Representative Jordan Rhen, Mid Atlantic Estimating Manager

## SECTION 1 – FIRM INFORMATION

### 1.1 Background Information

a) How many years has the firm been in business? 24

b) How many years has the firm been doing business in the proposed contract field? 24

Under what former names has the firm conducted business?  
Engenuity LLC was founded in 2002, and was later acquired by  
Ainsworth Incorporated in 2022.

c) Identify all jurisdictions in which the firm is licensed or otherwise qualified to do business.

Pennsylvania                      Delaware  
Maryland

d) If the firm is a corporation, provide the following information:

Date of incorporation August, 21, 2018  
State of incorporation Delaware  
President's name Craig Stanford  
Vice President's name(s) Michael McHenry  
Secretary's name Christian Marcoux  
Treasurer's name Paulo Mota

~~e) If the firm is a partnership, provide the following information:~~

~~Date of formation \_\_\_\_\_  
Type of partnership \_\_\_\_\_  
Names of partners \_\_\_\_\_~~

~~f) If the firm is individually owned, provide the following information:~~

~~Date of formation \_\_\_\_\_  
Name of owner \_\_\_\_\_~~

~~g) If the form of the firm is other than those listed above, describe it and name the principals:~~

~~\_\_\_\_\_~~

## SECTION 2 - EXPERIENCE AND PERFORMANCE

### 2.1 General

- a) Provide the annual construction volume in dollars completed by the firm in the past three years:
- Year 2025 \$ 45,000,000
- Year 2024 \$ 45,000,000
- Year 2023 \$ 55,000,000
- b) Identify the percentage of work on similar projects the firm typically performs with its own work force 80%
- c) List the categories of work that the firm normally performs with its own forces on similar projects.

Demo of piping and equipment, Piping, and Equipment installation.

### 2.2 Project Experience and References

Submit as **Attachment 1** to this Qualifications Statement:

- a) Suggested number of Sheets/Pages:

- 3 sheets/(6 pages)

Three (3) detailed project descriptions for relevant projects similar in size and scope to the Contract Work. The project descriptions shall include, at a minimum, the following information presented in the order listed below:

- vii. Name of project, type of project and location
- viii. Description of the project and relevance of work to the Contract Work
- ix. Contact information for an owner representative familiar with the firm's work performed on this project. Include name, address, telephone number(s) and e-mail address.
- x. The original bid/proposal price and the final contract price. If the project is ongoing, project the final price and relation to proposal price. Contract value for which the firm was/is responsible.
- xi. The original date for project completion and the actual completion date. If the project is ongoing, project the completion date and relation to original schedule.
- xii. As available, performance ratings of the work evaluated by owner or owner's representative.

### 2.3 Contractor Safety Record

Submit as **Attachment 2** to this Qualifications Statement the information specified herein and verify this information by providing copies of OSHA 300/200 Forms or appropriate documentation from insurance carriers, as applicable. The firm may submit written explanations to comment on or clarify its safety record.

- a) Provide the firm's Workers Compensation Experience Modification Rating for the past three years, beginning with the most recent year available:

Year 1: 3/1/25-3/1/26 .642

Year 2: 3/1/24-3/1/25 .856

Year 3: 7/1/23-7/1/24 .858

- b) Provide the firm's Total Lost Workday Incidence Rate (LWDIR) for the past three years, beginning with the most recent year available:

Year 1:	<u>2024</u>	<u>0.00</u>
Year 2:	<u>2023</u>	<u>0.00</u>
Year 3:	<u>2022</u>	<u>0.00</u>

\*LWDIR Rate = Number of Lost Time Injuries & Illnesses x 200,000 ÷ Total Hours Worked

- c) Provide the firm's Recordable Incidence Rate (RIR) for the past three years:

Year 1:	<u>2024</u>	<u>1.1</u>
Year 2:	<u>2023</u>	<u>3.3</u>
Year 3:	<u>2022</u>	<u>1.6</u>

\*RIR Rate = Number of Injuries x 200,000 ÷ Total Hours Worked

- d) Provide in an **Attachment 3** to this Qualifications Statement a list of any health or safety citations issued by federal or state agencies for serious or willful violations issued in the past 3 years. Include a separate statement for any such violations and include the citation number, a brief description of the violation and the amount of penalty, if any, for each violation and current status of violation.

### **SECTION 3 - REQUIRED DISCLOSURES**

The firm shall answer the following questions with regard to the past three (3) years. If any question is answered in the affirmative, the firm shall submit in an **Attachment 5** to this Qualifications Statement, for each affirmative answer, a written explanation which shall provide details concerning the matter in question, including applicable dates, locations, names of projects/project owners and current status of any such matter.

- 3.1 Is the firm currently debarred or suspended from doing business with any federal, state or local government agency or private entity?  
Yes \_\_\_ No X
- 3.2 Has the firm ever been debarred or suspended from doing business with any federal, state or local government agency or private entity?  
Yes \_\_\_ No X
- 3.3 Is the firm currently or has the firm been otherwise prohibited from doing business with any federal, state or local government agency or private entity?  
Yes \_\_\_ No X
- 3.4 Has the firm been denied prequalification (not including short listing), declared non-responsible, or otherwise declared ineligible to submit bids or proposals for work by any federal, state or local government agency or private entity?  
Yes \_\_\_ No X
- 3.5 Has the firm defaulted, been terminated for cause or otherwise failed to complete any project that it was awarded?  
Yes \_\_\_ No X

- 3.6 Has the firm been assessed or required to pay liquidated damages in connection with work performed on any project?  
Yes \_\_\_ No X
- 3.7 Has the firm had any business or professional license, registration, certificate or certification suspended or revoked?  
Yes \_\_\_ No X
- 3.8 Have any liens been filed against the firm as a result of its failure to pay subcontractors, suppliers, or workers?  
Yes \_\_\_ No X
- 3.9 Has the firm been denied bonding or insurance coverage or been discontinued by a surety or insurance company?  
Yes \_\_\_ No X
- 3.10 Has the firm been found in violation of any laws, including but not limited to contracting or antitrust laws, tax or licensing laws, labor or employment laws or environmental laws by a final decision of a court or government agency?  
Yes \_\_\_ No X
- \*Note: information regarding health and safety violations is addressed in a previous section.
- 3.11 Has the firm or its owners, officers, directors or managers been the subject of any criminal indictment or criminal investigation concerning any aspect of the firm's business?  
Yes \_\_\_ No X
- 3.12 Has the firm been subject to any bankruptcy proceeding?  
Yes \_\_\_ No X

#### **SECTION 4 - REQUIRED REPRESENTATIONS**

In submitting this Qualifications Statement, along with the other representations and authorizations listed in the RFP, the firm also makes the following representations, which it understands are required as a condition of performing the Contract Work and receiving payment for same.

- 4.1 The firm will possess all applicable professional, business and trade licenses required for performing the Contract Work.
- 4.2 The firm satisfies all bonding and insurance requirements as stipulated in the solicitation for the Contract Work.
- 4.3 The firm and all subcontractors it employs in execution of the Contract Work shall be in full compliance with the Commonwealth's requirements for workers' compensation insurance according to all applicable laws, and unemployment insurance according to all applicable laws.
- 4.4 The firm and all subcontractors it employs in execution of the Contract Work shall be in full compliance with all requirements of the Commonwealth's prevailing wage law and Public Works Employment Verification Act.

- 4.5 If awarded the Contract Work, the firm represents that it will not exceed its current bonding limitations when the Contract Work is combined with the total aggregate amount of all unfinished work for which the Contractor is responsible.
- 4.6 The firm represents that it has no conflicts of interests with the Commonwealth of Pennsylvania and, if awarded the Contract Work, any potential conflicts of interest that may arise in the future will be disclosed immediately to the Department of General Services.
- 4.7 The firm represents the price offered in connection with its proposal for the Contract Work was arrived at independently without consultation, communication or agreement with any other Proposer or competitor.
- 4.8 The firm will ensure that employees and applicants for employment are not discriminated against because of their race, color, religion, sex or national origin.

Please see Ainsworth information attachments previously located in appendix F for Safety reports and past project history.

**APPENDIX G  
DESIGNATED CRITICAL WORK  
QUALIFICATIONS STATEMENT**

**COVER SHEET**

DGS Project Name Capitol Complex Central Plant  
DGS Project Number DGS C-0948-0090 P3.2

**DESIGNATED CRITICAL WORK: For proper evaluation, the Proposer MUST submit at least one "Designated Critical Work Qualification Statement" for each Work item listed in T-1C for the respective contract. NOTE: The selected Proposer shall enter subcontracts with each listed subcontractor in T-1C.**

Check One Work item for which this Qualification Statement is being submitted:

General Construction (.1 contract)

- Below grade utility (electrical) vault, below grade tunneling
- High security (impact) bollards
- Freight elevator
- Structural correction repair (plant and cooling tower)
- Multiple prime contract coordination and sequencing of work

HVAC Construction (.2 contract)

- Temporary chilled water systems
- Water-cooled chillers and system pumps
- Central plant piping and valve demolition and replacement (steam, chilled and condenser water)
- HVAC central plant controls and optimization strategy
- Testing, adjusting, and balancing
- Chemical Treatment

Electrical (.4 contract)

- Switchgear (main-tie-main with automatic transfer and closed transition transfer)
- Coordination of multiple voltage distribution (medium/low)
- Substations
- Duct bank (vault and tunnel)
- Busway feeders
- Fire pumps
- Panelboards
- Power conditioning and uninterruptible power supply
- Variable frequency drives
- Short-circuit, coordination, arc flash study

Name of Firm Johnson Controls Building Solutions, LLC.

Address 195 Limekiln Road New Cumberland, PA 17070

Principal Office 5757 North Green Bay Avenue, Milwaukee, WI 53209

Owner or Authorized Representative Christopher Barlow

## SECTION 1 – FIRM INFORMATION

### 1.1 Background Information

a) How many years has the firm been in business? 141 years

b) How many years has the firm been doing business in the proposed contract field? 141 years

Under what former names has the firm conducted business?

Johnson Service Company July 10, 1902 - November 11, 1974

Johnson Electric Service Company July 31, 1900-July 10, 1902

Johnson Controls, Inc. 1974-2025

c) Identify all jurisdictions in which the firm is licensed or otherwise qualified to do business.

Johnson Controls is qualified to do business in all states in the United States.

d) If the firm is a corporation, provide the following information:

Date of incorporation Johnson Controls was initially formed and began in 1885 but not incorporate until July 31, 1900

State of incorporation State of Wisconsin

President's name \_\_\_\_\_

Vice President's name(s) \_\_\_\_\_

Secretary's name \_\_\_\_\_

Treasurer's name \_\_\_\_\_

e) If the firm is a partnership, provide the following information:

Date of formation Not applicable

Type of partnership Not applicable

Names of partners Not applicable

f) If the firm is individually owned, provide the following information:

Date of formation Not applicable

Name of owner Not applicable

g) If the form of the firm is other than those listed above, describe it and name the principals:

Not applicable

## SECTION 2 - EXPERIENCE AND PERFORMANCE

### 2.1 General

- a) Provide the annual construction volume in dollars completed by the firm in the past three years:
- Year 2025 \$ 1,723,914,043
- Year 2024 \$ 1,145,142,869
- Year 2023 \$ 1,018,367,354
- b) Identify the percentage of work on similar projects the firm typically performs with its own work force nearly 100%
- c) List the categories of work that the firm normally performs with its own forces on similar projects. BAS Controls and installation and other HVAC services

### 2.2 Project Experience and References

Submit as **Attachment 1** to this Qualifications Statement:

- a) Suggested number of Sheets/Pages:

- 3 sheets/(6 pages)

Three (3) detailed project descriptions for relevant projects similar in size and scope to the Contract Work. The project descriptions shall include, at a minimum, the following information presented in the order listed below:

- vii. Name of project, type of project and location
- viii. Description of the project and relevance of work to the Contract Work
- ix. Contact information for an owner representative familiar with the firm's work performed on this project. Include name, address, telephone number(s) and e-mail address.
- x. The original bid/proposal price and the final contract price. If the project is ongoing, project the final price and relation to proposal price. Contract value for which the firm was/is responsible.
- xi. The original date for project completion and the actual completion date. If the project is ongoing, project the completion date and relation to original schedule.
- xii. As available, performance ratings of the work evaluated by owner or owner's representative.

### 2.3 Contractor Safety Record

Submit as **Attachment 2** to this Qualifications Statement the information specified herein and verify this information by providing copies of OSHA 300/200 Forms or appropriate documentation from insurance carriers, as applicable. The firm may submit written explanations to comment on or clarify its safety record.

- a) Provide the firm's Workers Compensation Experience Modification Rating for the past three years, beginning with the most recent year available:

Year 1:	<u>2025</u>	<u>.35</u>
Year 2:	<u>2024</u>	<u>.34</u>
Year 3:	<u>2023</u>	<u>.42</u>

- b) Provide the firm's Total Lost Workday Incidence Rate (LWDIR) for the past three years, beginning with the most recent year available:

Year 1:	<u>2024</u>	<u>578</u>
Year 2:	<u>2023</u>	<u>299</u>
Year 3:	<u>2022</u>	<u>920</u>

\*LWDIR Rate = Number of Lost Time Injuries & Illnesses x 200,000 ÷ Total Hours Worked

- c) Provide the firm's Recordable Incidence Rate (RIR) for the past three years:

Year 1:	<u>2024</u>	<u>.59</u>
Year 2:	<u>2023</u>	<u>.52</u>
Year 3:	<u>2022</u>	<u>.52</u>

\*RIR Rate = Number of Injuries x 200,000 ÷ Total Hours Worked

- d) Provide in an **Attachment 3** to this Qualifications Statement a list of any health or safety citations issued by federal or state agencies for serious or willful violations issued in the past 3 years. Include a separate statement for any such violations and include the citation number, a brief description of the violation and the amount of penalty, if any, for each violation and current status of violation.

### **SECTION 3 - REQUIRED DISCLOSURES**

The firm shall answer the following questions with regard to the past three (3) years. If any question is answered in the affirmative, the firm shall submit in an **Attachment 5** to this Qualifications Statement, for each affirmative answer, a written explanation which shall provide details concerning the matter in question, including applicable dates, locations, names of projects/project owners and current status of any such matter.

- 3.1 Is the firm currently debarred or suspended from doing business with any federal, state or local government agency or private entity?  
Yes \_\_\_ No x
- 3.2 Has the firm ever been debarred or suspended from doing business with any federal, state or local government agency or private entity?  
Yes \_\_\_ No x
- 3.3 Is the firm currently or has the firm been otherwise prohibited from doing business with any federal, state or local government agency or private entity?  
Yes \_\_\_ No x
- 3.4 Has the firm been denied prequalification (not including short listing), declared non-responsible, or otherwise declared ineligible to submit bids or proposals for work by any federal, state or local government agency or private entity?  
Yes \_\_\_ No x
- 3.5 Has the firm defaulted, been terminated for cause or otherwise failed to complete any project that it was awarded?  
Yes \_\_\_ No x

- 3.6 Has the firm been assessed or required to pay liquidated damages in connection with work performed on any project?  
Yes \_\_\_ No x
- 3.7 Has the firm had any business or professional license, registration, certificate or certification suspended or revoked?  
Yes \_\_\_ No x
- 3.8 Have any liens been filed against the firm as a result of its failure to pay subcontractors, suppliers, or workers?  
Yes x No \_\_\_
- 3.9 Has the firm been denied bonding or insurance coverage or been discontinued by a surety or insurance company?  
Yes \_\_\_ No x
- 3.10 Has the firm been found in violation of any laws, including but not limited to contracting or antitrust laws, tax or licensing laws, labor or employment laws or environmental laws by a final decision of a court or government agency?  
Yes \_\_\_ No x
- \*Note: information regarding health and safety violations is addressed in a previous section.
- 3.11 Has the firm or its owners, officers, directors or managers been the subject of any criminal indictment or criminal investigation concerning any aspect of the firm's business?  
Yes \_\_\_ No x
- 3.12 Has the firm been subject to any bankruptcy proceeding?  
Yes \_\_\_ No x

#### **SECTION 4 - REQUIRED REPRESENTATIONS**

In submitting this Qualifications Statement, along with the other representations and authorizations listed in the RFP, the firm also makes the following representations, which it understands are required as a condition of performing the Contract Work and receiving payment for same.

- 4.1 The firm will possess all applicable professional, business and trade licenses required for performing the Contract Work.
- 4.2 The firm satisfies all bonding and insurance requirements as stipulated in the solicitation for the Contract Work.
- 4.3 The firm and all subcontractors it employs in execution of the Contract Work shall be in full compliance with the Commonwealth's requirements for workers' compensation insurance according to all applicable laws, and unemployment insurance according to all applicable laws.
- 4.4 The firm and all subcontractors it employs in execution of the Contract Work shall be in full compliance with all requirements of the Commonwealth's prevailing wage law and Public Works Employment Verification Act.

- 4.5 If awarded the Contract Work, the firm represents that it will not exceed its current bonding limitations when the Contract Work is combined with the total aggregate amount of all unfinished work for which the Contractor is responsible.
- 4.6 The firm represents that it has no conflicts of interests with the Commonwealth of Pennsylvania and, if awarded the Contract Work, any potential conflicts of interest that may arise in the future will be disclosed immediately to the Department of General Services.
- 4.7 The firm represents the price offered in connection with its proposal for the Contract Work was arrived at independently without consultation, communication or agreement with any other Proposer or competitor.
- 4.8 The firm will ensure that employees and applicants for employment are not discriminated against because of their race, color, religion, sex or national origin.



Dana J. Robinson  
Vice President  
Marsh USA LLC  
200 Public Square  
Suite 3760  
Cleveland, OH 44114  
T +1 216 937 1495  
Dana.Robinson@marsh.com  
www.marsh.com

CONFIDENTIAL

Mr. Craig Davis  
Associate Director, Global Insurance & Claims  
Corporate Risk Management  
Johnson Controls International plc  
5757 N. Green Bay Ave.  
Glendale, WI 53209

October 1, 2025

Subject: Verification of Experience Modification

Dear Craig,

This letter is to verify insured program NCCI Interstate experience modification factors applicable for the current year and five prior years for Johnson Controls US Holdings, Inc. and all subsidiaries and majority owned entities, including Johnson Controls, Inc., Johnson Controls Fire Protection LP, and Johnson Controls Security Solutions LLC. The factors are as follows:

Effective Date of Experience Modification Factor	Experience Modification Factor - JCI	Production Date Experience Modification Factor - JCI	Applies to the Johnson Controls Policy Term
October 1, 2025	0.35	09/03/2025	10/01/2025
October 1, 2024	0.34	08/19/2025	10/01/2024
October 1, 2023	0.42	05/19/2025	10/01/2023
October 1, 2022	0.53	05/19/2025	10/01/2022
October 1, 2021	0.51	09/10/2024	10/01/2021
October 1, 2020	0.51	06/24/2024	10/01/2020

Regards,

*Dana J. Robinson*

Dana J. Robinson

**Health and Safety Violations 2020-2024**  
**Johnson Controls, Building Solutions North America, HVAC Domain**

Inspection due to	Agency/ Inspection No.	Date of Action	Citation/Violation Description	Citation Classification/ Penalty	Outcome	Corrective Action
Accident	MOSH 1761511.015	7/12/2024	1. 1910.147(c)(4)(i) Procedures shall be developed, documented and utilized for the control of potentially hazardous energy when employees are engaged in the activities covered by this section.	1 Serious	\$3,550	Employee terminated for violating company policy.
Referral	MOSH 159841.015	5/25/2022	1.1910.147(d)(5)(i) Following the application of lockout or tagout devices to energy isolating devices, all potentially hazardous stored or residual energy shall be relieved, disconnected, restrained, and otherwise rendered safe.	1 Other than Serious	\$4,900	Employee terminated for violating company policy.
Referral	OSHA 1509458.015	1/6/2021	1. WAC 296-155-120-1 The employer did not ensure "First-aid training and certification." The employer could not provide a valid first aid certificate to ensure all employees are afforded quick and effective first aid attention in the event of an on the job injury.	1 General	\$0	Trained the initial site within 60 days. Plan to train the rest of the state's personnel (WA).

**Health and Safety Violations 2020-2024**  
**Johnson Controls, Building Solutions North America, HVAC Domain**

Inspection due to	Agency/ Inspection No.	Date of Action	Citation/Violation Description	Citation Classification/ Penalty	Outcome	Corrective Action
Accident	MOSH 1761511.015	7/12/2024	1. 1910.147(c)(4)(i) Procedures shall be developed, documented and utilized for the control of potentially hazardous energy when employees are engaged in the activities covered by this section.	1 Serious	\$3,550	Employee terminated for violating company policy.
Referral	MOSH 159841.015	5/25/2022	1.1910.147(d)(5)(i) Following the application of lockout or tagout devices to energy isolating devices, all potentially hazardous stored or residual energy shall be relieved, disconnected, restrained, and otherwise rendered safe.	1 Other than Serious	\$4,900	Employee terminated for violating company policy.
Referral	OSHA 1509458.015	1/6/2021	1. WAC 296-155-120-1 The employer did not ensure "First-aid training and certification." The employer could not provide a valid first aid certificate to ensure all employees are afforded quick and effective first aid attention in the event of an on the job injury.	1 General	\$0	Trained the initial site within 60 days. Plan to train the rest of the state's personnel (WA).

Johnson Controls, Building Solutions North America, HVAC Domain  
Safety Summary

Pre-bid support team: [FieldSafetyTeam@jci.com](mailto:FieldSafetyTeam@jci.com)

CALENDAR YEAR	EXPOSURE HOURS	AVERAGE # OF EMPLOYEES	FATALITIES	CASES WITH DAYS AWAY FROM WORK	LOST TIME INCIDENT RATE (LTIR)	# LOST DAYS	LOST DAY SEVERITY RATE	CASES WITH JOB TRANSFER OR RESTRICTION	CASES WITH DAYS AWAY RESTRICTION OR TRANSFER RATE (DART)	OTHER RECORDABLE (MEDICAL ATTENTION ONLY) CASES	RECORDABLE (MEDICAL ATTENTION ONLY) INCIDENT RATE	TOTAL RECORDABLE CASES	TOTAL RECORDABLE INCIDENT RATE (TRIR)
2024	17,322,384	8,661	0	9	0.10	578	6.67	23	0.37	19	0.22	51	0.59
2023	17,285,844	7,957	0	6	0.07	299	3.46	20	0.30	19	0.22	45	0.52
2022	20,307,608	9,496	0	12	0.12	920	9.06	20	0.32	21	0.21	53	0.52
2021	19,675,755	10,366	0	11	0.11	738	7.50	28	0.40	18	0.18	57	0.58
2020	18,284,491	9,142	0	15	0.16	1937	21.19	24	0.43	22	0.24	61	0.67

Rate Calculations:	
<b>TRIR:</b>	$\frac{\text{(total recordable only cases)} \times (200,000)}{\text{(hours worked)}}$
<b>LTIR:</b>	$\frac{\text{(lost time cases)} \times (200,000)}{\text{(hours worked)}}$
<b>LOST DAY SEVERITY RATE:</b>	$\frac{\text{(# of actual days lost)} \times (200,000)}{\text{(hours worked)}}$
<b>DART:</b>	$\frac{\text{(lost time cases + restricted work cases)} \times (200,000)}{\text{(hours worked)}}$

Note: 200,000 is an industry standard representing 100 workers working 40 hours per week, 50 weeks per year.

Johnson Controls, Inc. has the following Safety Programs & Processes in place. Copies can be downloaded from the safety prequalification page.

Program / Safety Work Practice	Yes	Program / Safety Work Practice	Yes
Incident Reporting Process	X	Hot Work Program	X
Asbestos Control Program	X	Housekeeping Program	X
Confined Space Program	X	Ladder Safety Program	X
Cranes/Hoisting/Rigging Program	X	Lead Awareness Program	X
Demolition Program	X	Leading Edge Program	X
Electrical Safety Program	X	Lockout/Tagout Program	X
Excavation/Trenching/Shoring Program	X	Material Handling Program	X
Fall Protection Program	X	Personal Protective Equipment Program	X
Fire Prevention/Protection Program	X	Respiratory Protection Program	X
Hazard Communication Program	X	Audit & Inspection Process	X
Job Hazard Analysis Process	X	Substance Abuse Program	X
New Employee Orientation Process	X	Aerial Work Program	X
Disciplinary Action Process	X	Compressed Air & Gas Program	X
Sub Contractor Prequalification Process*	X	Hand & Power Tools Program	X
Fire Protection & Prevention Program	X	Assured Equipment Grounding Conductor/GFCI Program	X

\*Based on customer requirements.

# OSHA's Form 300A

## Summary of Work-Related Injuries and Illnesses

Year 2020



U.S. Department of Labor  
Occupational Safety and Health Administration

Form approved OMB no. 1218-0176

All establishments covered by Part 1904 must complete this Summary page, even if no injuries or illnesses occurred during the year. Remember to review the Log to verify that the entries are complete

Using the Log, count the individual entries you made for each category. Then write the totals below making sure you've added the entries from every page of the log. If you had no cases write "0."

Employees former employees, and their representatives have the right to review the OSHA Form 300 in its entirety. They also have limited access to the OSHA Form 301 or its equivalent. See 29 CFR 1904.35, in OSHA's Recordkeeping rule, for further details on the access provision for these forms

### Number of Cases

Total number of deaths	Total number of cases with days away from work	Total number of cases with job transfer or restriction	Total number of other recordable cases
<u>0</u>	<u>15</u>	<u>24</u>	<u>22</u>
(G)	(H)	(I)	(J)

### Number of Days

Total number of days away from work	Total number of days of job transfer or restriction
<u>887</u>	<u>1,937</u>
(K)	(L)

### Injury and Illness Types

Total number of ... (M)	
(1) Injury	<u>60</u>
(2) Skin Disorder	<u>0</u>
(3) Respiratory Condition	<u>0</u>
(4) Poisoning	<u>0</u>
(5) Hearing	<u>0</u>
(6) All other illnesses	<u>1</u>

Post this Summary page from February 1 to April 30 of the year following the year covered by the form

Public reporting burden for this collection of information is estimated to average 50 minutes per response, including time to review the instruction, search and gather the data needed, and complete and review the collection of information. Persons are not required to respond to the collection of information unless it displays a currently valid OMB control number. If you have any comments about these estimates or any aspects of this data collection, contact: US Department of Labor. OSHA Office of Statistics, Room N-3644, 200 Constitution Ave. NW. Washington. DC 20210. Do not send the completed forms to this office.

### Establishment Information

Your establishment name Johnson Controls Inc - Systems and Services North America

Street 507 E Michigan St

City Milwaukee State WI Zip 53202

Industry description (e.g., Manufacture of motor truck trailers)  
Plumbing Heating and Air Conditioning

Standard Industrial Classification (SIC), if known (e.g., SIC 3715)  
1 7 1 1

North American Industry Classification System (NAICS)  
2 3 8 2 2 0

### Employment information

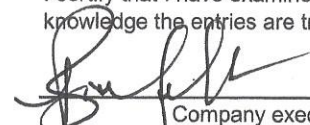
Annual average number of employees 9,142

Total hours worked by all employees last year 18,284,491

### Sign here

Knowing falsifying this document may result in a fine.

I certify that I have examined this document and that to the best of my knowledge the entries are true, accurate, and complete

  
Company executive EHS Director - North America  
Title

262 227 5368 1/22/21  
Phone Date

# OSHA's Form 300A

## Summary of Work-Related Injuries and Illnesses

Year 2021



U.S. Department of Labor  
Occupational Safety and Health Administration

Form approved OMB no. 1218-0176

All establishments covered by Part 1904 must complete this Summary page, even if no injuries or illnesses occurred during the year. Remember to review the Log to verify that the entries are complete

Using the Log, count the individual entries you made for each category. Then write the totals below making sure you've added the entries from every page of the log. If you had no cases write "0."

Employees former employees, and their representatives have the right to review the OSHA Form 300 in its entirety. They also have limited access to the OSHA Form 301 or its equivalent. See 29 CFR 1904.35, in OSHA's Recordkeeping rule, for further details on the access provision for these forms

### Number of Cases

Total number of deaths	Total number of cases with days away from work	Total number of cases with job transfer or	Total number of other recordable cases
0	11	28	18
(G)	(H)	(I)	(J)

### Number of Days

Total number of days away from work	Total number of days of job transfer or restriction
738	1,803
(K)	(L)

### Injury and Illness Types

Total number of ...	(M)	(N)	(O)
(1) Injury	54	(4) Poisoning	0
(2) Skin Disorder	0	(5) Hearing	0
(3) Respiratory Condition	0	(6) All other illnesses	3

Post this Summary page from February 1 to April 30 of the year following the year covered by the form

Public reporting burden for this collection of information is estimated to average 50 minutes per response, including time to review the instruction, search and gather the data needed, and complete and review the collection of information. Persons are not required to respond to the collection of information unless it displays a currently valid OMB control number. If you have any comments about these estimates or any aspects of this data collection, contact: US Department of Labor, OSHA Office of Statistics, Room N-3644, 200 Constitution Ave. NW, Washington, DC 20210. Do not send the completed forms to this office.

### Establishment Information

Your establishment name Johnson Controls Systems and Services North America

Street 507 E Michigan St

City Milwaukee State WI Zip 53202

Industry description (e.g., Manufacture of motor truck trailers)  
Plumbing Heating and Air Conditioning

Standard Industrial Classification (SIC), if known (e.g., SIC 3715)  
\_\_\_\_\_

North American Industry Classification System (NAICS)  
2 3 8 2 2 0

### Employment information

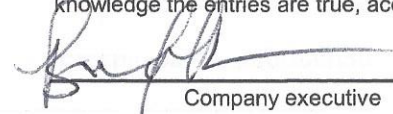
Annual average number of employees 10,366

Total hours worked by all employees last year 19,675,755

### Sign here

Knowing falsifying this document may result in a fine.

I certify that I have examined this document and that to the best of my knowledge the entries are true, accurate, and complete

  
EHS Director - North America  
Company executive Title

414-524-6033

Phone

1/25/22  
Date



# Summary of Work-Related Injuries and Illnesses

U.S. Department of Labor  
Occupational Safety and Health Administration

Form approved OMB no. 1218-0176

All establishments covered by Part 1904 must complete this Summary page, even if no work-related injuries or illnesses occurred during the year. Remember to review the Log to verify that the entries are complete and accurate before completing this summary.

Using the Log, count the individual entries you made for each category. Then write the totals below, making sure you've added the entries from every page of the Log. If you had no cases, write "0."

Employees, former employees, and their representatives have the right to review the OSHA Form 300 in its entirety. They also have limited access to the OSHA Form 301 or its equivalent. See 29 CFR Part 1904.35, in OSHA's recordkeeping rule, for further details on the access provisions for these forms.

### Number of Cases

Total number of death	Total number of cases with days away from work	Total number of cases with job transfer or restriction	Total number of other recordable cases
0	12	20	21
(G)	(H)	(I)	(J)

### Number of Days

Total number of days away from work	Total number of days of job transfer or restriction
920	1,755
(K)	(L)

### Injury and Illness Types

Total number of . . . (M)			
(1) Injuries	53	(4) Poisonings	0
		(5) Hearing loss	0
(2) Skin disorders	0	(6) All other illnesses	0
(3) Respiratory conditions	0		

Post this Summary page from February 1 to April 30 of the year following the year covered by the form.

Public reporting burden for this collection of information is estimated to average 50 minutes per response, including time to review the instructions, search and gather the data needed, and complete and review the collection of information. Persons are not required to respond to the collection of information unless it displays a currently valid OMB control number. If you have any comments about these estimates or any other aspects of this data collection, contact: US Department of Labor, OSHA Office of Statistical Analysis, Room N-3644, 200 Constitution Avenue, NW, Washington, DC 20210. Do not send the completed forms to this office.

### Establishment information

Your establishment name Johnson Controls Systems and Services North America

Street : 507 E Michigan St

City : Milwaukee State : Wisconsin ZIP : 53202

Industry description (e.g., *Manufacture of motor truck trailers*)

Plumbing Heating and Air Conditioning

Standard Industrial Classification (SIC), if known (e.g., 3715)

OR

North American Industrial Classification (NAICS), if known (e.g., 336212)

238220

**Employment information** (If you don't have these figures, see the Worksheet on the back of this page to estimate.)

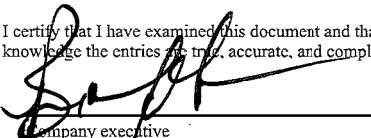
Annual average number of employees 9,496

Total hours worked by all employees last year 20,307,608

Sign here

Knowingly falsifying this document may result in a fine.

I certify that I have examined this document and that to the best of my knowledge the entries are true, accurate, and complete.

  
EHS Director - North America

Company executive

Title

262 227 5348  
Phone

1/29/23  
Date



# Summary of Work-Related Injuries and Illnesses

Form approved OMB no. 1218-017

All establishments covered by Part 1904 must complete this Summary page, even if no work-related injuries or illnesses occurred during the year. Remember to review the Log to verify that the entries are complete and accurate before completing this summary.

Using the Log, count the individual entries you made for each category. Then write the totals below, making sure you've added the entries from every page of the Log. If you had no cases, write "0."

Employees, former employees, and their representatives have the right to review the OSHA Form 300 in its entirety. They also have limited access to the OSHA Form 301 or its equivalent. See 29 CFR Part 1904.35, in OSHA's recordkeeping rule, for further details on the access provisions for these forms.

### Number of Cases

Total number of death	Total number of cases with days away from work	Total number of cases with job transfer or restriction	Total number of other recordable cases
0	6	20	19
(G)	(H)	(I)	(J)

### Number of Days

Total number of days away from work	Total number of days of job transfer or restriction
299	2296
(K)	(L)

### Injury and Illness Types

Total number of . . . (M)	(1) Injuries	(2) Skin disorders	(3) Respiratory conditions	(4) Poisonings	(5) Hearing loss	(6) All other illnesses
	45	0	0	0	0	0

Post this Summary page from February 1 to April 30 of the year following the year covered by the form.

Public reporting burden for this collection of information is estimated to average 50 minutes per response, including time to review the instructions, search and gather the data needed, and complete and review the collection of information. Persons are not required to respond to the collection of information unless it displays a currently valid OMB control number. If you have any comments about these estimates or any other aspects of this data collection, contact: US Department of Labor, OSHA Office of Statistical Analysis, Room N-3644, 200 Constitution Avenue, NW, Washington, DC 20210. Do not send the completed forms to this office.

### Establishment information

Your establishment name Johnson Controls Systems & Services North America

Street : 507

City : Milwaukee State : Wisconsin ZIP : 53202

Industry description (e.g., *Manufacture of motor truck trailers*)

Plumbing Heating AC

Standard Industrial Classification (SIC), if known (e.g., 3715)

OR

North American Industrial Classification (NAICS), if known (e.g., 336212)

238220

Employment information (If you don't have these figures, see the Worksheet on the back of this page to estimate.)

Annual average number of employees 7957

Total hours worked by all employees last year 17285844

Sign here

Knowingly falsifying this document may result in a fine.

I certify that I have examined this document and that to the best of my knowledge the entries are true, accurate, and complete.

[Signature] Exec EHS Director  
Company executive Title

414 524 6033 1/25/24  
Phone Date



# Summary of Work-Related Injuries and Illnesses

U.S. Department of Labor

Occupational Safety and Health Administration

Form approved OMB no. 1218-0176

All establishments covered by Part 1904 must complete this Summary page, even if no work-related injuries or illnesses occurred during the year. Remember to review the Log to verify that the entries are complete and accurate before completing this summary.

Using the Log, count the individual entries you made for each category. Then write the totals below, making sure you've added the entries from every page of the Log. If you had no cases, write "0."

Employees, former employees, and their representatives have the right to review the OSHA Form 300 in its entirety. They also have limited access to the OSHA Form 301 or its equivalent. See 29 CFR Part 1904.35, in OSHA's recordkeeping rule, for further details on the access provisions for these forms.

## Number of Cases

Total number of death	Total number of cases with days away from work	Total number of cases with job transfer or restriction	Total number of other recordable cases
0	9	23	19
(G)	(H)	(I)	(J)

## Number of Days

Total number of days away from work	Total number of days of job transfer or restriction
578	1,530
(K)	(L)

## Injury and Illness Types

Total number of . . . (M)	(1) Injuries	(2) Skin disorders	(3) Respiratory conditions	(4) Poisonings	(5) Hearing loss	(6) All other illnesses
	51	0	0	0	0	0

Post this Summary page from February 1 to April 30 of the year following the year covered by the form.

Public reporting burden for this collection of information is estimated to average 50 minutes per response, including time to review the instructions, search and gather the data needed, and complete and review the collection of information. Persons are not required to respond to the collection of information unless it displays a currently valid OMB control number. If you have any comments about these estimates or any other aspects of this data collection, contact: US Department of Labor, OSHA Office of Statistical Analysis, Room N-3644, 200 Constitution Avenue, NW, Washington, DC 20210. Do not send the completed forms to this office.

### Establishment information

Your establishment name Johnson Controls Systems and Services NA

Street : 5757 North Green Bay Avenue

City : Milwaukee State : Wisconsin ZIP : 53209

Industry description (e.g., *Manufacture of motor truck trailers*)

Plumbing Heating AC

Standard Industrial Classification (SIC), if known (e.g., 3715)

OR

North American Industrial Classification (NAICS), if known (e.g., 336212)

238220

**Employment information** (If you don't have these figures, see the Worksheet on the back of this page to estimate.)

Annual average number of employees **8661**

Total hours worked by all employees last year **17322384**

**Sign here**

**Knowingly falsifying this document may result in a fine.**

I certify that I have examined this document and that to the best of my knowledge the entries are true, accurate, and complete.

Sr. EHS Manager

Company executive

Title

715-735-7411

1/28/25

Phone

Date

# Jason A. Hockenberry

---

## Education

Pennsylvania State University  
State College, PA  
**BS – Mechanical Engineering**

Graduation Date  
May 1992

## Experience

### Work Experience

- Johnson Controls, Inc. – Controls Systems Team Leader 2019 ~ Present
  - Responsible for managing control technicians and ensuring success in all technical aspects of central PA branch projects.
  - Training and managing of control technicians.
  - Manage Branch Systems Operations Team consisting of Systems Technicians. Assign appropriate resources (Systems Technicians, specialized tools/equipment, etc.) to the Lead Systems Specialists Projects. Provide site coordination support on Projects of higher complexity as needed.
- Johnson Controls, Inc. – Controls System Engineer 1995 ~ 2019
  - Responsible for the design, configuration, and operation of complete building control systems and data networks to meet the intent of the project requirements. Responsible for the development, commissioning and troubleshooting of complex software programs to ensure proper operation of the building control systems.

### Relevant Project Experience:

- Competence in execution of Chilled Water Plants
  - Capitol Chilled Water Plant (Engineer) – Original controls project renovation 2019
  - Penn State Hershey Medical Center, Children’s Hospital
  - Penn State Hershey Medical Center, Chiller Plant Optimization – Multi-Chiller Plant requiring 24/7 operation during cooling season DDC Controls Upgrade / Retrofit Implemented software to automate systems previously operated manually Improved the stability of systems that had long been difficult to control Coordinated integration requirements with Optimum Energy’s platform
  - Hershey Foods Data Center, Chiller Plant –Multi-Chiller Plant requiring 24/7 operation\_DDC Controls Upgrade / Retrofit\_Complete hardware / software design and system commissioning
  - PA Turnpike Commission Data Center, Chiller Plant –Fully Redundant Chilled Water Plant requiring 24/7 operation New Construction\_Complete software design and system commissioning
  - The Hershey Company – New Chocolate Plant including 2 large CHWPs, Y+S CHWP expansion and, various other projects / retrofits
  - Penn State Health– Lancaster Medical Center, Hampden Medical Center, Childrens Hospital, all with CHWP.
  - UPMC York Memorial Hospital – New hospital with chilled water plant
  - Various others

# Christopher J. Barlow

---

## Education

Drexel University  
Philadelphia, PA  
**Master of Science**  
**Construction Management**  
• Concentration - Sustainability and Green Construction

Graduation Date  
Spring 2016  
GPA  
3.9

Pennsylvania College of Technology  
Williamsport, PA  
**Bachelors of Science**  
**Heating, Ventilation & Air Conditioning Design Technology**  
• The National Scholars Honors Society (Cum Laude)  
• Dean's List  
• ASHRAE Student Design Competition: HVAC System Selection

Graduation Date  
May 2010  
GPA  
3.7

## Certifications and Competencies

- Dale Carnegie Course Graduate - 2016
- Member of ASHRAE and AEE
- Universal RSES Refrigerant Usage Certification

## Experience

### Work Experience

- Johnson Controls, Inc. – Account Executive 2022 ~ Present
- Johnson Controls, Inc. – Branch Installation Manager 2018 ~ 2022
  - Successfully managed central PA business ~50M portfolio.
- Johnson Controls, Inc. – Senior Project Engineer (Inside Sales) 2013 ~ 2018
  - Responsible for executing equipment projects. This includes selecting applied and commercial HVAC equipment for engineers, owners, and contractors.
- Johnson Controls, Inc. – Controls System Technician 2010 ~ 2013
  - Field programming, commissioning, and troubleshooting of building automation systems.

### Relevant Project Experience:

- Competent in sales and execution of Chilled Water Plants
  - Capitol Chilled Water Plant (Installation Manager) – Original controls project renovation 2019
  - Geisinger Health (Account Manager / Installation Manager) – Over 35 chillers and multiple chilled water plants.
  - The Hershey Company (Account Manager / Installation Manager) – New Chocolate Plant including 2 large CHWPs, Y+S CHWP expansion and, various other projects / retrofits
  - Penn State Health (Installation Manager)– Lancaster Medical Center, Hampden Medical Center, Childrens Hospital, all with CHWP.
  - Church and Dwight (Account Manager) – New chilled water plant, plant controls upgrade.
  - Various others – First Quality, TE connectivity, Ft Meade, etc.

# Eric Kendig

---

## Education

Pennsylvania College of Technology  
Williamsport, PA  
**Associate of Science**  
**Electromechanical Technology**

Graduation Date  
May 2007

## Experience

### Work Experience

- Johnson Controls, Inc. – Branch Installation Manager 2022 ~ Present
- Johnson Controls, Inc. – Project Manager 2021 ~ 2022
  - Responsible for managing a portfolio of major control projects
- Johnson Controls, Inc. – Lead System Specialist 2016 ~ 2021
  - Responsible for managing a portfolio of control projects including hardware design and software development.
- Johnson Controls, Inc. – Controls System Technician 2010 ~ 2016
  - Field programming, commissioning, and troubleshooting of building automation systems.

### Relevant Project Experience:

- Competence in execution of Chilled Water Plants
  - Geisinger Health (Installation Manager) – Over 35 chillers and multiple chilled water plants.
  - The Hershey Company (Installation Manager) – New Chocolate Plant including 2 large CHWPs, Y+S CHWP expansion and, various other projects / retrofits
  - Penn State Health (Project Manager Manager)– Lancaster Medical Center, Hampden Medical Center, Childrens Hospital, all with CHWP.
  - UPMC York Memorial Hospital (Project Manager) – New hospital with chilled water plant
  - Various others

## Attachment 1

### Project 1

Name of project, type of project and location	DGS Capitol Complex Chilled water plant renovation 2019
Description of the project and relevance of work to the Contract Work	Large renovation of central chilled water plant 8,600 tons. VPF control, energy efficiency, and plant optimization.
Contact information for an owner representative familiar with the firm's work performed on this project. Include name, address, telephone number(s) and e-mail address.	Corey Lex   Facilities Operations Administrator Dept. General Services   Energy & Resource Mgmt Office 403 North Office Building   Harrisburg, PA 17120 (W) <u>717.787.4408</u>
The original bid/proposal price and the final contract price. If the project is ongoing, project the final price and relation to proposal price. Contract value for which the firm was/is responsible.	Contract value: \$500,000
The original date for project completion and the actual completion date. If the project is ongoing, project the completion date and relation to original schedule.	Completion date: 2020
As available, performance ratings of the work evaluated by owner or owner's representative.	Satisfied customer by all measures. JCI continues to provide services on site.

### Project 2

Name of project, type of project and location	Penn State Health – Lancaster Medical Center 2160 State Rd, Lancaster, PA 17601
Description of the project and relevance of work to the Contract Work	New Greenfield hospital BAS installation for all mechanical systems. Systems include: Hot water and chilled water plants. Heat pump chillers and heat exchangers. QTY-12 AHUs and DOAS systems, 450+ terminal units (VAVs and FCUs). Pharmacy control systems, lab controls, and kitchen systems.
Contact information for an owner representative familiar with the firm's work performed on this project. Include name, address, telephone number(s) and e-mail address.	Dave Barto 717-531-0122 dbarto@pennstatehealth.psu.edu
The original bid/proposal price and the final contract price. If the project is ongoing, project the final price and relation to proposal price. Contract value for which the firm was/is responsible.	Contract Value: \$ 3,544,675
The original date for project completion and the actual completion date. If the project is ongoing,	Completion Date: August 2022

project the completion date and relation to original schedule.	
As available, performance ratings of the work evaluated by owner or owner's representative.	Satisfied customer by all measures. JCI continues to provide services on site.

### Project 3

Name of project, type of project and location	The Hershey Company – RCP Plant
Description of the project and relevance of work to the Contract Work	Brand new chocolate plant. Including three chilled water plants with 8 chillers. Over 20 AHUS and numerous terminal systems
Contact information for an owner representative familiar with the firm's work performed on this project. Include name, address, telephone number(s) and e-mail address.	Jake Garber Maintenance Supervisor Reese Chocolate Processing Plant 1000 Reese Ave Hershey, PA 17033-2271 Office: 717-374-0243 jegarber@hersheys.com
The original bid/proposal price and the final contract price. If the project is ongoing, project the final price and relation to proposal price. Contract value for which the firm was/is responsible.	Contract value: \$1,4000,000
The original date for project completion and the actual completion date. If the project is ongoing, project the completion date and relation to original schedule.	Completion Date: Spring 2025
As available, performance ratings of the work evaluated by owner or owner's representative.	Satisfied customer by all measures. JCI continues to provide services on site.

**APPENDIX G  
DESIGNATED CRITICAL WORK  
QUALIFICATIONS STATEMENT**

COVER SHEET

DGS Project Name

Capital complex Central Plant chiller

DGS Project Number

C-0948-0090-003

**DESIGNATED CRITICAL WORK: For proper evaluation, the Proposer MUST submit at least one "Designated Critical Work Qualification Statement" for each Work item listed in T-1C for the respective contract. NOTE: The selected Proposer shall enter subcontracts with each listed subcontractor in T-1C.**

Check One Work item for which this Qualification Statement is being submitted:

General Construction (.1 contract)

- Below grade utility (electrical) vault, below grade tunneling
- High security (impact) bollards
- Freight elevator
- Structural correction repair (plant and cooling tower)
- Multiple prime contract coordination and sequencing of work

HVAC Construction (.2 contract)

- Temporary chilled water systems
- Water-cooled chillers and system pumps
- Central plant piping and valve demolition and replacement (steam, chilled and condenser water)
- HVAC central plant controls and optimization strategy
- Testing, adjusting, and balancing
- Chemical Treatment

Electrical (.4 contract)

- Switchgear (main-tie-main with automatic transfer and closed transition transfer)
- Coordination of multiple voltage distribution (medium/low)
- Substations
- Duct bank (vault and tunnel)
- Busway feeders
- Fire pumps
- Panelboards
- Power conditioning and uninterruptible power supply
- Variable frequency drives
- Short-circuit, coordination, arc flash study

Name of Firm Flood & Starling, Inc.  
Address 718 Lime Kiln Road, New Cumberland, Pa 17070  
Principal Office Same  
Owner or Authorized Representative John Martz

**SECTION 1 – FIRM INFORMATION**

1.1 Background Information

a) How many years has the firm been in business? 57

b) How many years has the firm been doing business in the proposed contract field? 57

Under what former names has the firm conducted business?

N/A

c) Identify all jurisdictions in which the firm is licensed or otherwise qualified to do business.

USA

d) If the firm is a corporation, provide the following information:

Date of incorporation 1969

State of incorporation Pennsylvania

President's name Kevin Little

Vice President's name(s) Bret Morgan

Secretary's name \_\_\_\_\_

Treasurer's name \_\_\_\_\_

e) If the firm is a partnership, provide the following information:

Date of formation \_\_\_\_\_

Type of partnership N/A

Names of partners \_\_\_\_\_

f) If the firm is individually owned, provide the following information:

Date of formation N/A

Name of owner \_\_\_\_\_

g) If the form of the firm is other than those listed above, describe it and name the principals:

N/A

## SECTION 2 - EXPERIENCE AND PERFORMANCE

### 2.1 General

- a) Provide the annual construction volume in dollars completed by the firm in the past three years:
- Year 22 \$ 955,671.16  
Year 23 \$ 1,152,077.05  
Year 24 \$ 1,500,432.30
- b) Identify the percentage of work on similar projects the firm typically performs with its own work force 100%
- c) List the categories of work that the firm normally performs with its own forces on similar projects.

### 2.2 Project Experience and References

Submit as **Attachment 1** to this Qualifications Statement:

- a) Suggested number of Sheets/Pages:
- 3 sheets/(6 pages)

Three (3) detailed project descriptions for relevant projects similar in size and scope to the Contract Work. The project descriptions shall include, at a minimum, the following information presented in the order listed below:

- vii. Name of project, type of project and location
- viii. Description of the project and relevance of work to the Contract Work
- ix. Contact information for an owner representative familiar with the firm's work performed on this project. Include name, address, telephone number(s) and e-mail address.
- x. The original bid/proposal price and the final contract price. If the project is ongoing, project the final price and relation to proposal price. Contract value for which the firm was/is responsible.
- xi. The original date for project completion and the actual completion date. If the project is ongoing, project the completion date and relation to original schedule.
- xii. As available, performance ratings of the work evaluated by owner or owner's representative.

### 2.3 Contractor Safety Record

Submit as **Attachment 2** to this Qualifications Statement the information specified herein and verify this information by providing copies of OSHA 300/200 Forms or appropriate documentation from insurance carriers, as applicable. The firm may submit written explanations to comment on or clarify its safety record.

- a) Provide the firm's Workers Compensation Experience Modification Rating for the past three years, beginning with the most recent year available:

Year 1: \_\_\_\_\_  
Year 2: \_\_\_\_\_  
Year 3: \_\_\_\_\_

*SEE exemption sheet*

b) Provide the firm's Total Lost Workday Incidence Rate (LWDIR) for the past three years, beginning with the most recent year available:

Year 1: 0 / 0  
Year 2: 0 / 0  
Year 3: 0 / 0

\*LWDIR Rate = Number of Lost Time Injuries & Illnesses x 200,000 ÷ Total Hours Worked

c) Provide the firm's Recordable Incidence Rate (RIR) for the past three years:

Year 1: 0 / 0  
Year 2: 0 / 0  
Year 3: 0 / 0

\*RIR Rate = Number of Injuries x 200,000 ÷ Total Hours Worked

d) Provide in an **Attachment 3** to this Qualifications Statement a list of any health or safety citations issued by federal or state agencies for serious or willful violations issued in the past 3 years. Include a separate statement for any such violations and include the citation number, a brief description of the violation and the amount of penalty, if any, for each violation and current status of violation.

### **SECTION 3 - REQUIRED DISCLOSURES**

The firm shall answer the following questions with regard to the past three (3) years. If any question is answered in the affirmative, the firm shall submit in an **Attachment 5** to this Qualifications Statement, for each affirmative answer, a written explanation which shall provide details concerning the matter in question, including applicable dates, locations, names of projects/project owners and current status of any such matter.

3.1 Is the firm currently debarred or suspended from doing business with any federal, state or local government agency or private entity?

Yes \_\_\_ No ✓

3.2 Has the firm ever been debarred or suspended from doing business with any federal, state or local government agency or private entity?

Yes \_\_\_ No ✓

3.3 Is the firm currently or has the firm been otherwise prohibited from doing business with any federal, state or local government agency or private entity?

Yes \_\_\_ No ✓

3.4 Has the firm been denied prequalification (not including short listing), declared non-responsible, or otherwise declared ineligible to submit bids or proposals for work by any federal, state or local government agency or private entity?

Yes \_\_\_ No ✓

3.5 Has the firm defaulted, been terminated for cause or otherwise failed to complete any project that it was awarded?

Yes \_\_\_ No ✓

- 3.6 Has the firm been assessed or required to pay liquidated damages in connection with work performed on any project?  
Yes \_\_\_ No
- 3.7 Has the firm had any business or professional license, registration, certificate or certification suspended or revoked?  
Yes \_\_\_ No
- 3.8 Have any liens been filed against the firm as a result of its failure to pay subcontractors, suppliers, or workers?  
Yes \_\_\_ No
- 3.9 Has the firm been denied bonding or insurance coverage or been discontinued by a surety or insurance company?  
Yes \_\_\_ No
- 3.10 Has the firm been found in violation of any laws, including but not limited to contracting or antitrust laws, tax or licensing laws, labor or employment laws or environmental laws by a final decision of a court or government agency?  
Yes \_\_\_ No
- \*Note: information regarding health and safety violations is addressed in a previous section.
- 3.11 Has the firm or its owners, officers, directors or managers been the subject of any criminal indictment or criminal investigation concerning any aspect of the firm's business?  
Yes \_\_\_ No
- 3.12 Has the firm been subject to any bankruptcy proceeding?  
Yes \_\_\_ No

#### **SECTION 4 - REQUIRED REPRESENTATIONS**

In submitting this Qualifications Statement, along with the other representations and authorizations listed in the RFP, the firm also makes the following representations, which it understands are required as a condition of performing the Contract Work and receiving payment for same.

- 4.1 The firm will possess all applicable professional, business and trade licenses required for performing the Contract Work.
- 4.2 The firm satisfies all bonding and insurance requirements as stipulated in the solicitation for the Contract Work.
- 4.3 The firm and all subcontractors it employs in execution of the Contract Work shall be in full compliance with the Commonwealth's requirements for workers' compensation insurance according to all applicable laws, and unemployment insurance according to all applicable laws.
- 4.4 The firm and all subcontractors it employs in execution of the Contract Work shall be in full compliance with all requirements of the Commonwealth's prevailing wage law and Public Works Employment Verification Act.

- 4.5 If awarded the Contract Work, the firm represents that it will not exceed its current bonding limitations when the Contract Work is combined with the total aggregate amount of all unfinished work for which the Contractor is responsible.
- 4.6 The firm represents that it has no conflicts of interests with the Commonwealth of Pennsylvania and, if awarded the Contract Work, any potential conflicts of interest that may arise in the future will be disclosed immediately to the Department of General Services.
- 4.7 The firm represents the price offered in connection with its proposal for the Contract Work was arrived at independently without consultation, communication or agreement with any other Proposer or competitor.
- 4.8 The firm will ensure that employees and applicants for employment are not discriminated against because of their race, color, religion, sex or national origin.

.....

# FLOOD & STERLING, INC.

November 3, 2022

## Project Experience and References

### 1. PSECU Corporate Headquarters

1500 Elmerton Ave  
Harrisburg, Pa 17110

Total System's Balance of New Office Building

#### Description:

Project contained many large (40,000 to 60,000 CFM) units with VAV system, mostly under-floor systems. Large Smoke Evac systems throughout the building. Project contained a small cogeneration plant that produced Hot & Chilled water for the HVAC

#### Contact information:

Keith Gringrich of Quality Assurance Plus  
Director of Codes and Bidding

PH: (717) 458-0238  
[kgringrich@qualityassuranceplus.com](mailto:kgringrich@qualityassuranceplus.com)

Original Bid/Contract Price \$189,270.00

Completion Date: 12/17/13

## 2. Holy Spirit Trauma Center

503 N 21st St,  
Camp Hill, PA 17011

Total System's Balance of New Hospital/Medical Facility

### Description:

Project contained a mix of constant volume & variable volume systems. There were several rooms that required Room Pressure Balancing. Many critical exhaust air systems associated with the room pressure balancing also were contained in this report.

### Contact information:

Patrick Jacobs of Geisinger  
Sr. Facilities Coordinator, Facilities Construction

PH: (717) 972-7337  
pjacobs1@geisinger.edu

Original Bid/Contract Price: \$97,000.00

Completion Date: 5/15/18

## 2. Holy Spirit Trauma Center

503 N 21st St,  
Camp Hill, PA 17011

Total System's Balance of New Hospital/Medical Facility

### Description:

Project contained a mix of constant volume & variable volume systems. There were several rooms that required Room Pressure Balancing. Many critical exhaust air systems associated with the room pressure balancing also were contained in this report.

### Contact information:

Patrick Jacobs of Geisinger  
Sr. Facilities Coordinator, Facilities Construction

PH: (717) 972-7337  
pjacobs1@geisinger.edu

Original Bid/Contract Price: \$97,000.00

Completion Date: 5/15/18



CAPITAL REGION INSURANCE AGENCY  
— PLANNING · INSURANCE · FINANCIAL —

422 N. Front St. Wormleysburg, PA 17043

Call/Text 717-731-1142

April 8, 2025

John Martz  
Flood and Sterling, Inc  
718 Limekiln Road  
New Cumberland, PA 17070

Dear John,

Your Worker's Compensation policy does not currently have an (EMR) Experience Mod because your premium is not more than \$10,000. If your premium exceeds \$10,000 in the future, an Experience Mod will be applied.

Best Regards,

A handwritten signature in black ink that reads 'Doug Spigelmyer'.

Doug Spigelmyer  
Agent

.....

718 LIMEKILN ROAD  
NEW CUMBERLAND, PA 17070  
717.232.0529  
717.232.1797-fax  
Email: [contact@floodandsterling.com](mailto:contact@floodandsterling.com)

# FLOOD & STERLING, INC.

June 13, 2025

Pursuant to OSHA’s recordkeeping Rules, Flood & Sterling, Inc has less than 10 employees and is exempt from maintaining and keeping OSHA records.

Sincerely,



John Martz  
Office Manager



*“Committed to Excellence”*

.....

**APPENDIX G**  
**DESIGNATED CRITICAL WORK**  
**QUALIFICATIONS STATEMENT**

**COVER SHEET**

DGS Project Name Capitol Complex Central Plant- Building Renovations, Chiller System Replacement

DGS Project Number DGS C-0948-0090 Phase 3

**DESIGNATED CRITICAL WORK: For proper evaluation, the Proposer MUST submit at least one "Designated Critical Work Qualification Statement" for each Work item listed in T-1C for the respective contract. NOTE: The selected Proposer shall enter subcontracts with each listed subcontractor in T-1C.**

Check One Work item for which this Qualification Statement is being submitted:

General Construction (.1 contract)

- Below grade utility (electrical) vault, below grade tunneling
- High security (impact) bollards
- Freight elevator
- Structural correction repair (plant and cooling tower)
- Multiple prime contract coordination and sequencing of work

HVAC Construction (.2 contract)

- Temporary chilled water systems
- Water-cooled chillers and system pumps
- Central plant piping and valve demolition and replacement (steam, chilled and condenser water)
- HVAC central plant controls and optimization strategy
- Testing, adjusting, and balancing
- Chemical Treatment

Electrical (.4 contract)

- Switchgear (main-tie-main with automatic transfer and closed transition transfer)
- Coordination of multiple voltage distribution (medium/low)
- Substations
- Duct bank (vault and tunnel)
- Busway feeders
- Fire pumps
- Panelboards
- Power conditioning and uninterruptible power supply
- Variable frequency drives
- Short-circuit, coordination, arc flash study

Name of Firm ProAsys, Inc.

Address 318 Hendel Street, Shillington, PA 19607

Principal Office 318 Hendel Street, Shillington, PA 19607

Owner or Authorized Representative Timothy Keeler

**SECTION 1 – FIRM INFORMATION**

1.1 Background Information

- a) How many years has the firm been in business? 65
  
- b) How many years has the firm been doing business in the proposed contract field? 65

Under what former names has the firm conducted business?

The Keeler Company, Inc.  
The Keeler Company, Inc. dba ProAsys  
ProAsys, Inc.  
\_\_\_\_\_  
\_\_\_\_\_

- c) Identify all jurisdictions in which the firm is licensed or otherwise qualified to do business.

Pennsylvania                      New Jersey                      Delaware  
Maryland                                      \_\_\_\_\_                                      \_\_\_\_\_

- d) If the firm is a corporation, provide the following information:

Date of incorporation 1/1/2010  
State of incorporation Pennsylvania  
President's name Timothy Keeler  
Vice President's name(s) Bernard Kiefer  
Secretary's name \_\_\_\_\_  
Treasurer's name \_\_\_\_\_

- e) If the firm is a partnership, provide the following information:

Date of formation \_\_\_\_\_  
Type of partnership \_\_\_\_\_  
Names of partners \_\_\_\_\_

- f) If the firm is individually owned, provide the following information:

Date of formation \_\_\_\_\_  
Name of owner \_\_\_\_\_

- g) If the form of the firm is other than those listed above, describe it and name the principals:

\_\_\_\_\_  
\_\_\_\_\_

## SECTION 2 - EXPERIENCE AND PERFORMANCE

### 2.1 General

- a) Provide the annual construction volume in dollars completed by the firm in the past three years:
- |      |             |             |
|------|-------------|-------------|
| Year | <u>2024</u> | <u>\$ 0</u> |
| Year | <u>2023</u> | <u>\$ 0</u> |
| Year | <u>2022</u> | <u>\$ 0</u> |
- b) Identify the percentage of work on similar projects the firm typically performs with its own work force 100%
- c) List the categories of work that the firm normally performs with its own forces on similar projects. HVAC Water Treatment & Wastewater Treatment

### 2.2 Project Experience and References

Submit as **Attachment 1** to this Qualifications Statement:

- a) Suggested number of Sheets/Pages:
- 3 sheets/(6 pages)

Three (3) detailed project descriptions for relevant projects similar in size and scope to the Contract Work. The project descriptions shall include, at a minimum, the following information presented in the order listed below:

- vii. Name of project, type of project and location
- viii. Description of the project and relevance of work to the Contract Work
- ix. Contact information for an owner representative familiar with the firm's work performed on this project. Include name, address, telephone number(s) and e-mail address.
- x. The original bid/proposal price and the final contract price. If the project is ongoing, project the final price and relation to proposal price. Contract value for which the firm was/is responsible.
- xi. The original date for project completion and the actual completion date. If the project is ongoing, project the completion date and relation to original schedule.
- xii. As available, performance ratings of the work evaluated by owner or owner's representative.

### 2.3 Contractor Safety Record

Submit as **Attachment 2** to this Qualifications Statement the information specified herein and verify this information by providing copies of OSHA 300/200 Forms or appropriate documentation from insurance carriers, as applicable. The firm may submit written explanations to comment on or clarify its safety record.

- a) Provide the firm's Workers Compensation Experience Modification Rating for the past three years, beginning with the most recent year available:
- |         |             |            |
|---------|-------------|------------|
| Year 1: | <u>2024</u> | <u>.79</u> |
| Year 2: | <u>2023</u> | <u>.82</u> |
| Year 3: | <u>2022</u> | <u>.82</u> |

- b) Provide the firm's Total Lost Workday Incidence Rate (LWDIR) for the past three years, beginning with the most recent year available:

Year 1:	<u>2024</u>	<u>3.19</u>
Year 2:	<u>2023</u>	<u>0</u>
Year 3:	<u>2022</u>	<u>0</u>

\*LWDIR Rate = Number of Lost Time Injuries & Illnesses x 200,000 ÷ Total Hours Worked

- c) Provide the firm's Recordable Incidence Rate (RIR) for the past three years:

Year 1:	<u>2024</u>	<u>9.57</u>
Year 2:	<u>2023</u>	<u>3.36</u>
Year 3:	<u>2022</u>	<u>14.17</u>

\*RIR Rate = Number of Injuries x 200,000 ÷ Total Hours Worked

- d) Provide in an **Attachment 3** to this Qualifications Statement a list of any health or safety citations issued by federal or state agencies for serious or willful violations issued in the past 3 years. Include a separate statement for any such violations and include the citation number, a brief description of the violation and the amount of penalty, if any, for each violation and current status of violation.

### **SECTION 3 - REQUIRED DISCLOSURES**

The firm shall answer the following questions with regard to the past three (3) years. If any question is answered in the affirmative, the firm shall submit in an **Attachment 5** to this Qualifications Statement, for each affirmative answer, a written explanation which shall provide details concerning the matter in question, including applicable dates, locations, names of projects/project owners and current status of any such matter.

- 3.1 Is the firm currently debarred or suspended from doing business with any federal, state or local government agency or private entity?  
Yes \_\_\_ No X
- 3.2 Has the firm ever been debarred or suspended from doing business with any federal, state or local government agency or private entity?  
Yes \_\_\_ No X
- 3.3 Is the firm currently or has the firm been otherwise prohibited from doing business with any federal, state or local government agency or private entity?  
Yes \_\_\_ No X
- 3.4 Has the firm been denied prequalification (not including short listing), declared non-responsible, or otherwise declared ineligible to submit bids or proposals for work by any federal, state or local government agency or private entity?  
Yes \_\_\_ No X
- 3.5 Has the firm defaulted, been terminated for cause or otherwise failed to complete any project that it was awarded?  
Yes \_\_\_ No X

- 3.6 Has the firm been assessed or required to pay liquidated damages in connection with work performed on any project?  
Yes \_\_\_ No X
- 3.7 Has the firm had any business or professional license, registration, certificate or certification suspended or revoked?  
Yes \_\_\_ No X
- 3.8 Have any liens been filed against the firm as a result of its failure to pay subcontractors, suppliers, or workers?  
Yes \_\_\_ No X
- 3.9 Has the firm been denied bonding or insurance coverage or been discontinued by a surety or insurance company?  
Yes \_\_\_ No X
- 3.10 Has the firm been found in violation of any laws, including but not limited to contracting or antitrust laws, tax or licensing laws, labor or employment laws or environmental laws by a final decision of a court or government agency?  
Yes \_\_\_ No X
- \*Note: information regarding health and safety violations is addressed in a previous section.
- 3.11 Has the firm or its owners, officers, directors or managers been the subject of any criminal indictment or criminal investigation concerning any aspect of the firm's business?  
Yes \_\_\_ No X
- 3.12 Has the firm been subject to any bankruptcy proceeding?  
Yes \_\_\_ No X

#### **SECTION 4 - REQUIRED REPRESENTATIONS**

In submitting this Qualifications Statement, along with the other representations and authorizations listed in the RFP, the firm also makes the following representations, which it understands are required as a condition of performing the Contract Work and receiving payment for same.

- 4.1 The firm will possess all applicable professional, business and trade licenses required for performing the Contract Work.
- 4.2 The firm satisfies all bonding and insurance requirements as stipulated in the solicitation for the Contract Work.
- 4.3 The firm and all subcontractors it employs in execution of the Contract Work shall be in full compliance with the Commonwealth's requirements for workers' compensation insurance according to all applicable laws, and unemployment insurance according to all applicable laws.
- 4.4 The firm and all subcontractors it employs in execution of the Contract Work shall be in full compliance with all requirements of the Commonwealth's prevailing wage law and Public Works Employment Verification Act.

- 4.5 If awarded the Contract Work, the firm represents that it will not exceed its current bonding limitations when the Contract Work is combined with the total aggregate amount of all unfinished work for which the Contractor is responsible.
- 4.6 The firm represents that it has no conflicts of interests with the Commonwealth of Pennsylvania and, if awarded the Contract Work, any potential conflicts of interest that may arise in the future will be disclosed immediately to the Department of General Services.
- 4.7 The firm represents the price offered in connection with its proposal for the Contract Work was arrived at independently without consultation, communication or agreement with any other Proposer or competitor.
- 4.8 The firm will ensure that employees and applicants for employment are not discriminated against because of their race, color, religion, sex or national origin.



**Name of Project: PA Forum**

Type: Tower Install

Location: 500 Walnut St. Harrisburg, PA

Description: Clean and prepare new systems per specs.

Contact Information:

Name: Midline Mechanical

Address: 901 Dawn Ave. Suite E, Ephrata, PA 17522.

Number: 717-721-3160

Email: [mminnich@matchlinemechanical.com](mailto:mminnich@matchlinemechanical.com)

Proposal price: \$19,000.00

Completion: 8/2022

**Name of Project: Landis Homes Crossings**

Type: Tower/Boiler Install

Location: 1001 E Oregon Rd., Lititz, PA 17543

Description: Clean and prepare new systems per specs.

Contact Information:

Name: E.H. Gochnauer

Address: P.O. Box 6278, Lancaster, PA 17607

Number: 717-299-3776

Email: [dhaug@ehgochnauer.com](mailto:dhaug@ehgochnauer.com)

Proposal price: \$38,000.00

Completion: 10/2017

**Name of Project: Landis Homes Ephrata**

Type: Tower Install

Location: 1001 E Oregon Rd., Lititz, PA 17543

Description: Clean and prepare new systems per specs.

Contact Information:

Name: Trago Mechanical

Address: 5 Wynwood Dr., Willow Street, PA 17584

Number: 717-464-6499

Email: [josborne@tragomech.com](mailto:josborne@tragomech.com)

Proposal price: \$17,200.00

Completion: 9/2022