

DATE: February 5, 2026

DEPARTMENT OF GENERAL SERVICES  
BUREAU OF CAPITAL PROJECT DESIGN MANAGEMENT  
1800 HERR STREET  
HARRISBURG, PENNSYLVANIA

**ADDENDUM NO. 14**

**on**

**PROJECT NO. DGS C-0948-0090 PHASE 003**

**PROJECT TITLE - Capitol Complex Central Plant - Building Renovations, Chiller System  
Replacement and Electrical System Upgrades**

**PROFESSIONAL:**

H.F. Lenz Co.

1407 Scalp Avenue

Johnstown, Pennsylvania, 15904

**If you submitted a bid prior to this Addendum being issued, your bid has been discarded and you must re-submit your bid(s) prior to the bid opening date and time.**

ADMINISTRATIVE CHANGES – ALL CONTRACTS

Item 1 - N/A

SPECIFICATION CHANGES – ALL CONTRACTS

Item 1 - See attached Addendum 14 PDF

DRAWING CHANGES – ALL CONTRACTS

Item 1 - See attached Addendum 14 PDF

DEPARTMENT OF GENERAL SERVICES  
BUREAU PRE-CONSTRUCTION  
1800 HERR STREET  
HARRISBURG, PENNSYLVANIA

**ADDENDUM NO. 14**

on

**PROJECT NO. DGS C-0948-0090 PHASE 003**

**PROJECT TITLE - Capitol Complex Central Plant - Building Renovations, Chiller System Replacement and Electrical System Upgrades**

**PROFESSIONAL:**

H.F. Lenz Co.

1407 Scalp Avenue

Johnstown, Pennsylvania 15904

**If you submitted a bid prior to this Addendum being issued, your bid has been discarded and you must re-submit your bid(s) prior to the bid opening date and time.**

**ADMINISTRATIVE CHANGES – ALL CONTRACTS**

Item 1 - **N/A**

**GENERAL CHANGES – ALL CONTRACTS**

Item 1 - **N/A**

**DRAWING CHANGES – ALL CONTRACTS**

Item 1 - **N/A**

**SPECIFICATION CHANGES – CONTRACT NO. DGS C-0948-0090 PHASE 3.3**

Item 1 - Section 221319, Add Article 2.4 Backwater Valves:

**2.4 BACKWATER VALVES**

**A. End of Line Backwater Valves:**

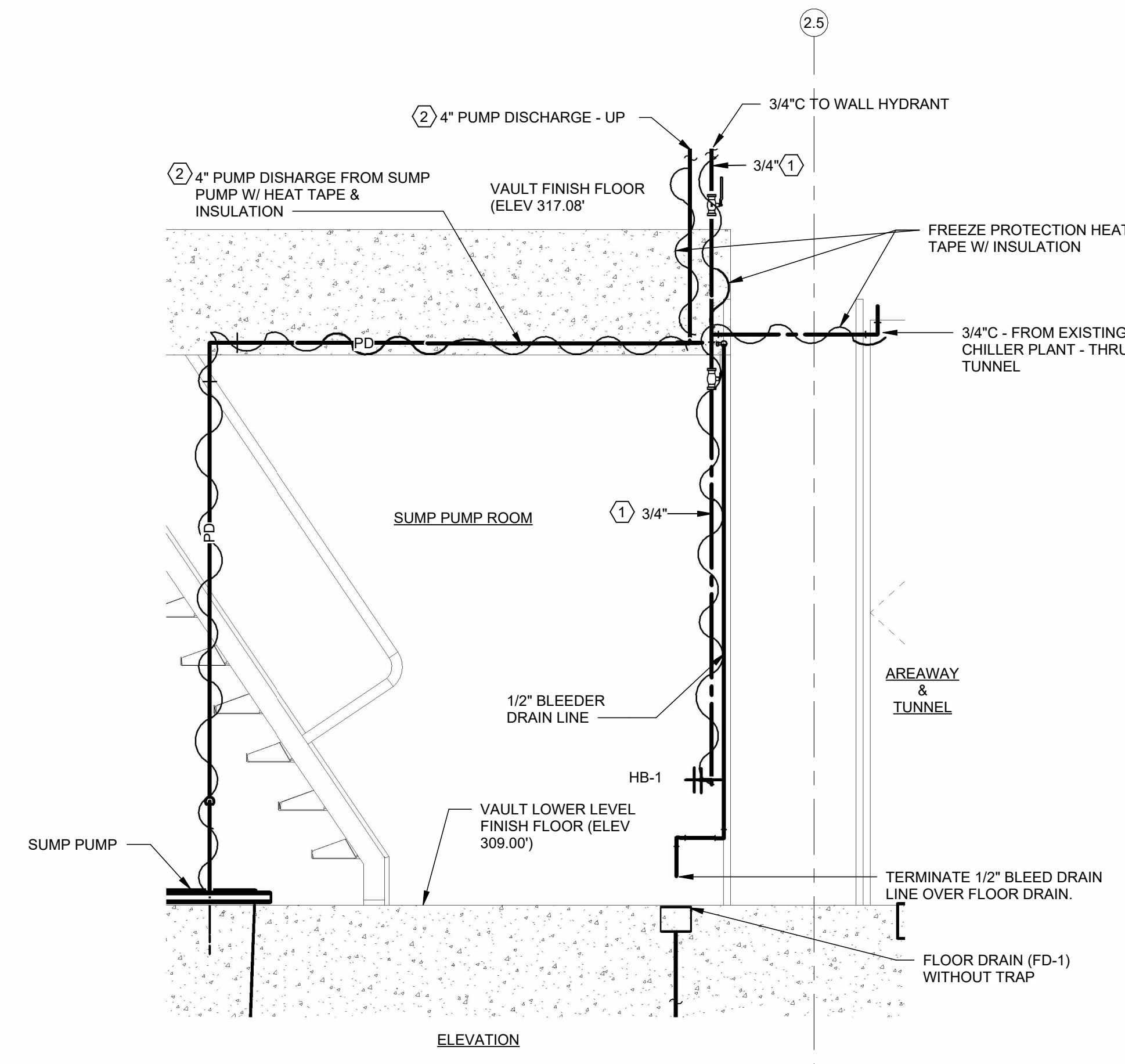
1. Manufacturers: Subject to compliance with requirements, provide products by the available manufacturers offering products that may be incorporated into the Work include, but are not limited to, the following:
  - a. Jay R. Smith Mfg Co; a division of Morris Group International
  - b. MIFAB, Inc
  - c. Wade; a subsidiary of McWane Inc.
  - d. Zurn Industries, LLC
2. Description: Coated cast iron body with hub inlet and open outlet for installation at end of drainage line with automatic flapper type backwater valve with o-ring.
3. Source Limitations: Obtain cast-iron, horizontal backwater valves from single manufacturer.
4. Standard: ASME A112.14.1.
5. Size: Same as connected piping.
6. Body Material: Coated Cast iron.
7. Basis of Design: Zurn - Backwater Valve Flapper Type - Model # Z1091

DRAWING CHANGES – CONTRACT NO. DGS C-0948-0090 PHASE 3.3

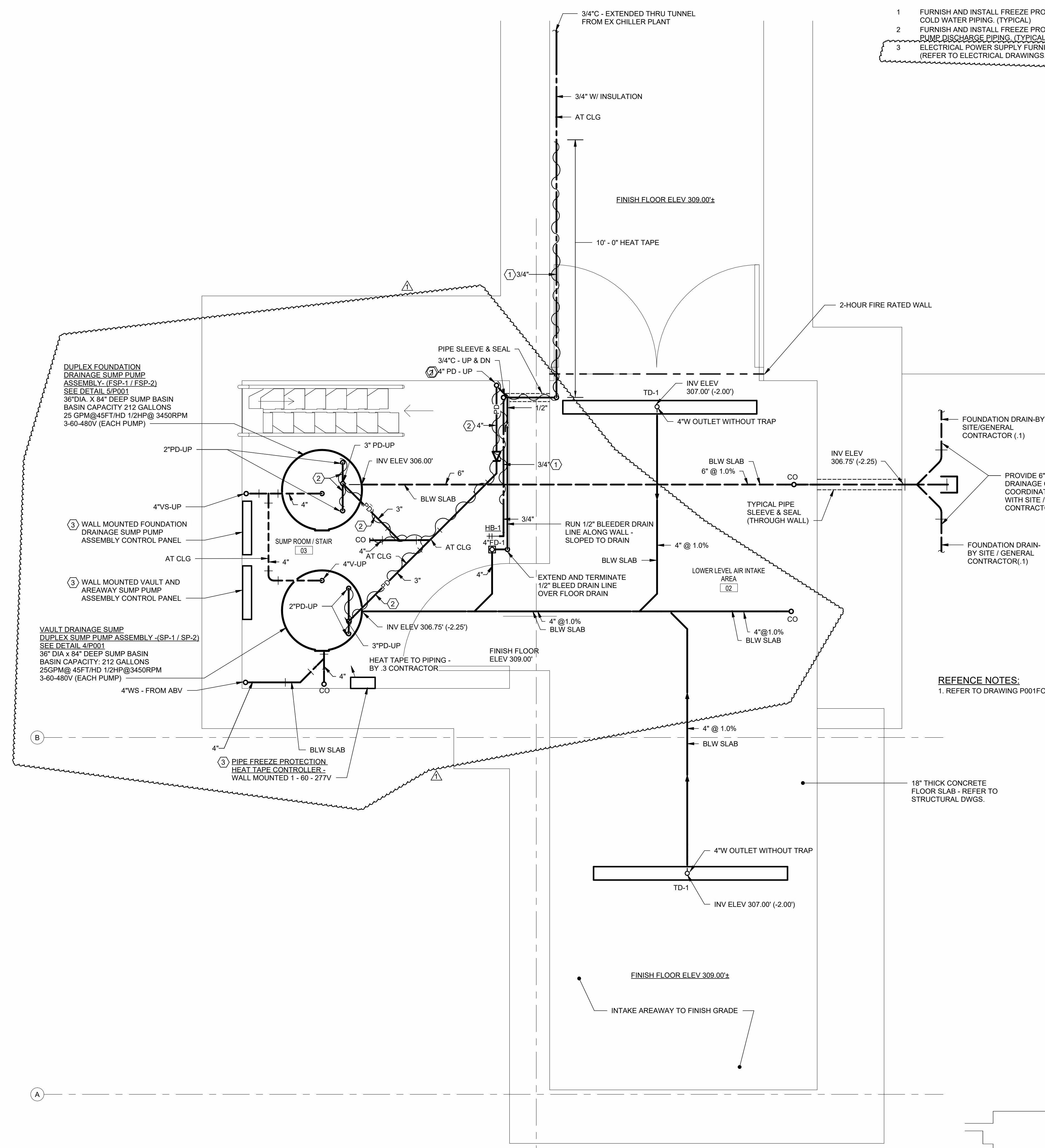
Item 1 - Sheets P201 and P202, dated February 5, 2026, are being reissued under this addendum.

**PLUMBING KEYNOTES**

- 1 FURNISH AND INSTALL FREEZE PROTECTION HEAT TAPE AND INSULATION ON COLD WATER PIPING. (TYPICAL)
- 2 FURNISH AND INSTALL FREEZE PROTECTION HEAT TAPE AND INSULATION ON SUMP DISCHARGE PIPING. (TYPICAL)
- 3 ELECTRICAL POWER SUPPLY FURNISH AND INSTALLED BY A CONTRACTOR (REFER TO ELECTRICAL DRAWINGS.)



**2 VAULT LOWER LEVEL SUMP PUMP AREA PIPING SCHEMATIC**  
NOT TO SCALE



**1 VAULT LOWER LEVEL PLAN - PLUMBING - NEW WORK**  
SCALE: 1/2" = 1'-0"

**REFERENCE NOTES:**  
1. REFER TO DRAWING P001 FOR PLUMBING SYMBOLS, ABBREVIATIONS, NOTES, DETAILS AND SCHEDULES.

1	FEB 5, 2026 ADDENDUM #14	
---	--------------------------	--

**RECORD REVISIONS**

Professional's Signature \_\_\_\_\_ Date \_\_\_\_\_

**H.F. LENZ**  
ENGINEERING  
Headquarters:  
1407 Sculp Avenue  
Johnstown, PA 15904  
814-269-9300  
www.hflenz.com

**COMMONWEALTH OF PENNSYLVANIA**  
**DEPARTMENT OF GENERAL SERVICES**  
HARRISBURG, PENNSYLVANIA

**PROJECT NO. DGS C-0948-0090 PHASE 003**

**CAPITAL COMPLEX CENTRAL PLANT BUILDING**  
**RENOVATIONS, CHILLER SYSTEM REPLACEMENT**  
**& ELECTRICAL SYSTEMS UPGRADES**  
HARRISBURG, DAUPHIN COUNTY, PENNSYLVANIA

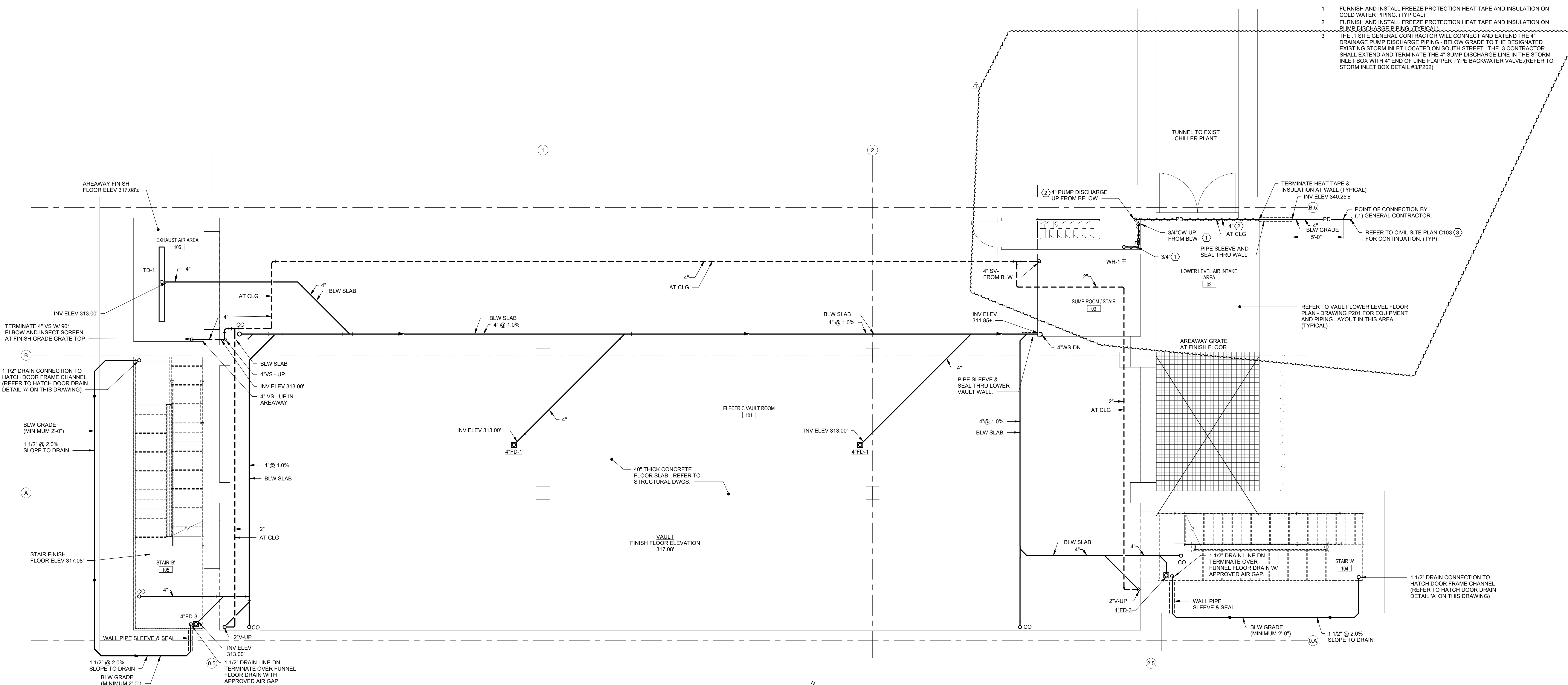
**ELECTRICAL VAULT LOWER LEVEL PLAN -**  
**PLUMBING NEW WORK**

**VERIFY SCALE**  
BAR IS ONE (1) INCH LONG ON ORIGINAL DRAWING.  
0 1  
IF BAR IS NOT ONE (1) INCH LONG, ADJUST SCALE ACCORDINGLY.  
CONTRACTOR SHALL FIELD VERIFY ALL DIMENSIONS. VARIANCE FROM CONTRACT DOCUMENTS NOT PERMITTED WITHOUT PROFESSIONAL & BUREAU OF CONSTRUCTION APPROVAL

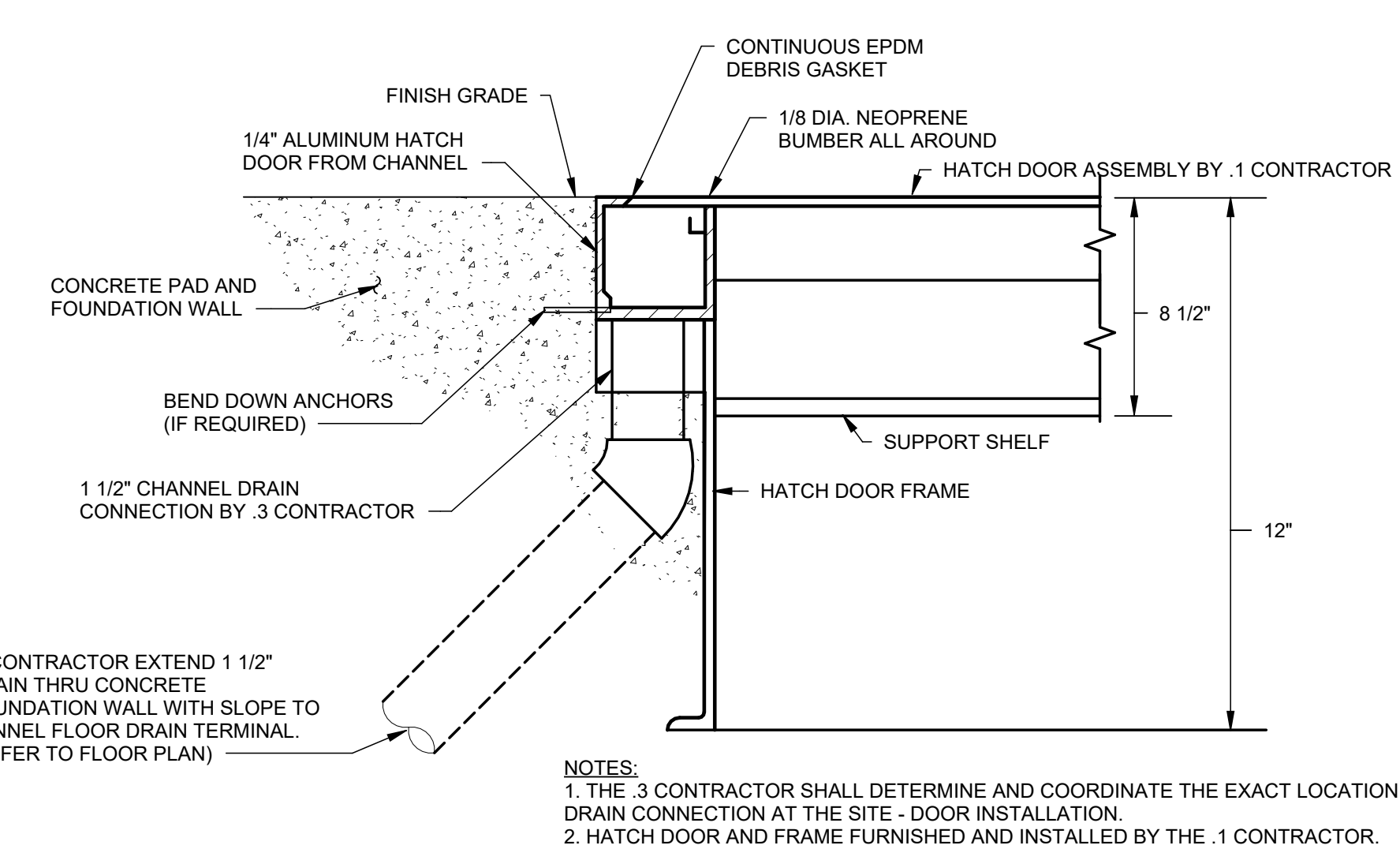
DRAWN BY	CRA	DATE	27 AUG 2025	DRAWING NO.	<b>P201</b>
CHECKED BY	SJK	SCALE	As indicated		

# PLUMBING KEYNOTES

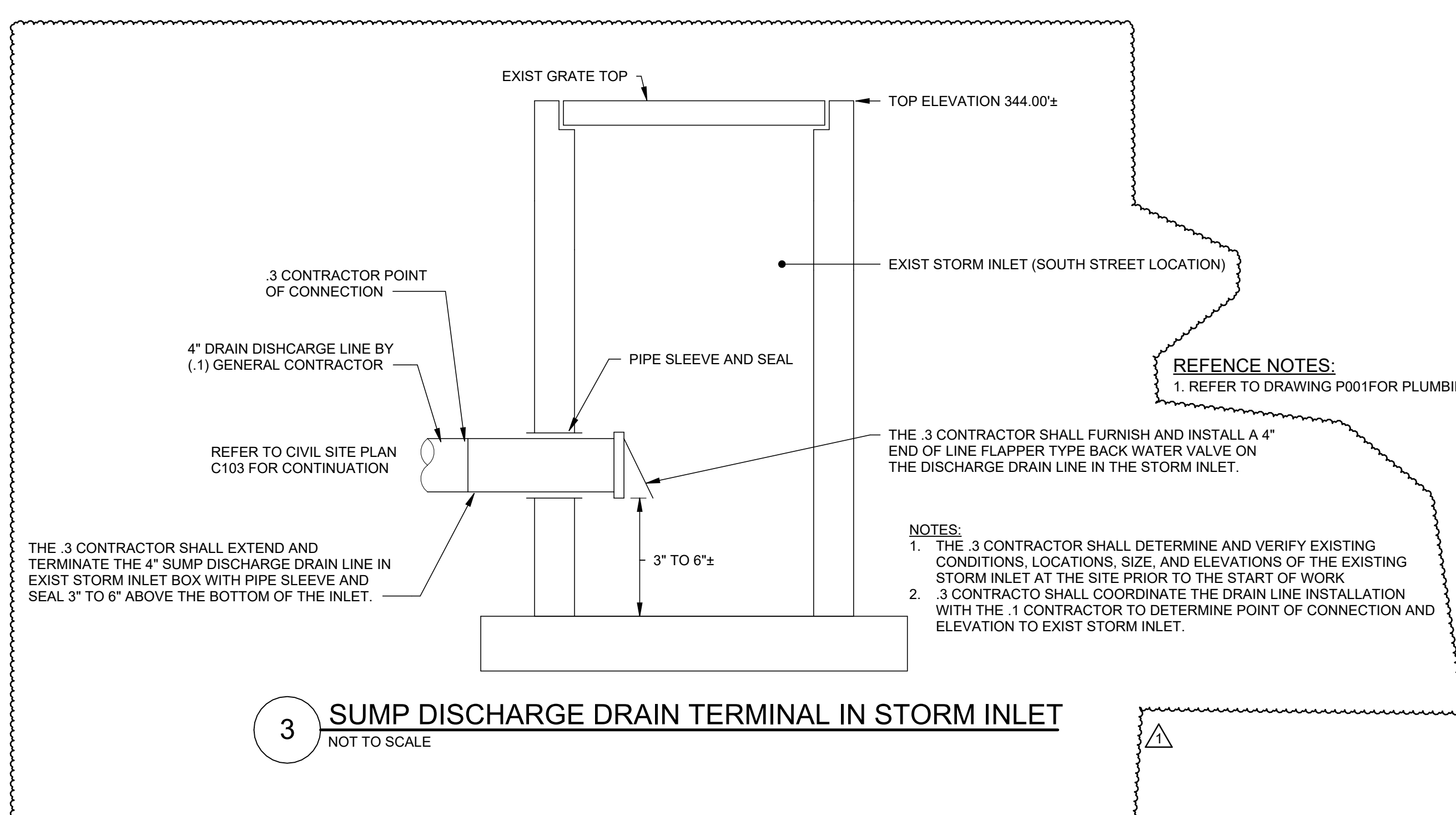
- 1 FURNISH AND INSTALL FREEZE PROTECTION HEAT TAPE AND INSULATION ON COLD WATER PIPING. (TYPICAL)
- 2 FURNISH AND INSTALL FREEZE PROTECTION HEAT TAPE AND INSULATION ON PUMP DISCHARGE PIPING. (TYPICAL)
- 3 THE 1 SITE GENERAL CONTRACTOR WILL CONNECT AND EXTEND THE 4" DRAINAGE PUMP DISCHARGE PIPING - BELOW GRADE TO THE DESIGNATED EXISTING STORM INLET LOCATED ON SOUTH STREET - THE 3 CONTRACTOR SHALL EXTEND AND TERMINATE THE 4" SUMP DISCHARGE LINE IN THE STORM INLET BOX WITH 4" END OF LINE FLAPPER TYPE BACKWATER VALVE (REFER TO STORM INLET BOX DETAIL #3/P202)



**1 VAULT PLAN - PLUMBING - NEW WORK**  
SCALE: 1/4" = 1'-0"



**2 STAIRWELL HATCH DOOR DRAIN DETAIL**  
NOT TO SCALE



**3 SUMP DISCHARGE DRAIN TERMINAL IN STORM INLET**  
NOT TO SCALE

1	FEB 5, 2026 ADDENDUM #14	
---	--------------------------	--

RECORD REVISIONS

Professional's Signature \_\_\_\_\_ Date \_\_\_\_\_

**H.F. LENZ** ENGINEERING  
1407 Sculp Avenue  
Johnstown, PA 15904  
814-269-9300  
www.hflenz.com

COMMONWEALTH OF PENNSYLVANIA  
DEPARTMENT OF GENERAL SERVICES  
HARRISBURG, PENNSYLVANIA

PROJECT NO. DGS C-0948-0090 PHASE 003

CAPITAL COMPLEX CENTRAL PLANT BUILDING  
RENOVATIONS, CHILLER SYSTEM REPLACEMENT  
& ELECTRICAL SYSTEMS UPGRADES  
HARRISBURG, DAUPHIN COUNTY, PENNSYLVANIA

ELECTRICAL VAULT PLAN - PLUMBING NEW WORK

**VERIFY SCALE**  
BAR IS ONE (1) INCH LONG ON ORIGINAL DRAWING.  
0 1  
IF BAR IS NOT ONE (1) INCH LONG, ADJUST SCALE ACCORDINGLY.  
CONTRACTOR SHALL FIELD VERIFY ALL DIMENSIONS. VARIANCE FROM CONTRACT DOCUMENTS NOT PERMITTED WITHOUT PROFESSIONAL & BUREAU OF CONSTRUCTION APPROVAL.

DRAWN BY	CRA	DATE	27 AUG 2025	DRAWING NO.	P202
CHECKED BY	SJK	SCALE	As indicated		