



pennsylvania
DEPARTMENT OF CORRECTIONS

Annual Statistical Report



2010

Tom Corbett
Governor

John E. Wetzel
Secretary

PRS Overview

The Bureau of Planning, Research and Statistics (PRS) directs the maintenance of historical data records for the Department and conducts ongoing planning, research, and evaluation activities designed to provide key decision-makers with quantitative data analysis for use in formulating and evaluating departmental policies and practices. Specific functions performed by the Office include planning, program evaluation, corrections research, data analysis, statistical repository, policy development and analysis.

Kristofer Bret Bucklen, Director
Planning, Research and Statistics

STAFF

- Robert FlahertyChief of Data Analysis
& Management Support
- Bonnie GasswintAnnuitant
- Lois Good.....Community Corrections
Analyst
- Runglux Kuba.....Information Coordinator
- Dean Lategan.....Population and
Projections Analyst
- Stacey O’Neill.....Security Data Analyst
- Lorraine Russell.....Research and Data
Analyst
- Angelo Santore.....Reentry/Program
Measures Analyst
- Joseph Tomkiel.....Research Manager

Annual Statistical Report



2 0 1 0

Report Preparation

Authors.....Dean Lategan
Stacey O’Neill
Angelo Santore

Technical and Editorial Support.....Planning, Research and
Statistics Staff

Note: Statistics in this report will not match statistics reported in the Bureau of Justice Statistics (BJS) “Prisoners in 2010” report. The BJS report is a national report based on a survey of all 50 states, containing different accounting rules from those used to generate this report. The primary difference is that this report counts all inmates under Pennsylvania Department of Corrections custody, whereas most of the tables/figures in the BJS report only include inmates who are sentenced and who have a maximum sentence of 1 year or more.

For additional information contact
The Bureau of Planning, Research and Statistics
at
(717) 975-4970 Fax (717) 975- 2232



COMMONWEALTH OF PENNSYLVANIA
DEPARTMENT OF CORRECTIONS
P.O. BOX 598
CAMP HILL, PENNSYLVANIA 17001-0598
(717) 975-4859

Secretary
John E. Wetzel

We are pleased to present the 2010 Annual Statistical Report on Pennsylvania's state prison system. This report provides a statistical overview of inmates admitted to, incarcerated in, and released from the Pennsylvania Department of Corrections in Calendar Year 2010. In addition, the report also offers a limited historical perspective on inmate profile changes for calendar years 2000 through 2010.

As Pennsylvania's inmate population continues to grow, the Department is committed to providing timely, accurate, and reliable data to policy makers and correctional administrators in order to ensure effective planning and evaluation practices. This information is used to effectively manage the Department's more than 15,000 employees, 27 prisons, 53 community corrections centers and facilities, one motivational boot camp, and more than 51,000 inmates.

We trust that this annual statistical report will serve to increase your understanding of the state prison system, its inmate population, and the significant challenges which the Department, as well as Pennsylvania's entire criminal justice system, are currently addressing.

Sincerely,

A handwritten signature in black ink, appearing to read "John E. Wetzel".

John E. Wetzel
Secretary of Corrections

Section I: Receptions

Receptions Highlights..... 7

Table 1: State Prison Receptions by Type and Offender Gender, 2000 through 2010..... 8

Table 2: State Prison Receptions by Committing County and Offender Gender in 2010..... 9

Table 3: Ten Counties with the Highest Court Commitment Activity in 2010..... 10

Table 4: Court Commitments by County for 2009 and 2010..... 11

Table 5: Court Commitments Received from 2000 through 2010 by Age Group 12

Table 6: Profile of Court Commitments Received by Age, Race, and Gender in 2009..... 13

Table 7: Profile of Court Commitments Received by Age, Race, and Gender in 2010..... 13

Table 8: Comparison of Court Commitments by Offense for 2009 and 2010..... 14

Table 9: Court Commitments by Minimum Sentence and Offender Gender in 2010..... 15

Table 10: Court Commitments by Maximum Sentence and Offender Gender in 2010..... 16

Table 11: Profile of Offenders Serving a Life Sentence Received from 2000 through 2010..... 17

Section II: Population

Population Highlights..... 19

Table 12: Rank Order of Ten Counties with Highest State Incarceration Rate for 2009 and 2010. 20

Table 13: Inmate Population by County and Gender on December 31; Calendar Years 2009..... 21
and 2010

Table 14: Rank-Ordered Comparison of Civilian Population and State Incarceration Rates..... 22
for 2009 and 2010

Table 15: Inmate Population Versus State Institutional Capacity from 2000 through 2010..... 23

Table 16: Month-End Population from January 2000 through December 2010..... 24

Table 17: Inmate Population by Facility, Race, Gender, and Age on December 31, 2009..... 25

Table 18: Inmate Population by Facility, Race, Gender, and Age on December 31, 2010..... 25

Table 19: Uniform Crime Report (UCR) Offense Groupings by Inmate Race and Gender..... 26
as of December 31, 2010

Table 20: Status of Inmates on December 31; Calendar Years 2000 through 2010..... 27

Contents

Table 21: Inmates by Primary UCR Offense on December 31; Calendar Years 2010 and 2009.....	28
with 2010 Average Sentence Length	
Table 22: Demographic Profile of Inmates on December 31; Calendar Years 2009 and 2010.....	29
Table 23: Long-Term Inmates on December 31; Calendar Years 2009 and 2010.....	30
Table 24: Number of Inmates by Facility Serving a Life Sentence on December 31;.....	30
Calendar Years 2009 and 2010	
Table 25: Ten Highest Counties with Inmates Serving a Life Sentence;.....	31
Calendar Years 2009 and 2010	
Table 26: Age of Inmates Serving a Life Sentence on December 31;.....	31
Calendar Years 2009 and 2010	
Table 27: Time Served by Inmates Serving Life as of December 31;.....	32
Calendar Years 2009 and 2010	
Table 28: Profile of Inmates Under Death Sentence on December 31;.....	32
Calendar Years 2009 and 2010	

Section III: Releases

Releases Highlights.....	34
Table 29: Average Time Served by Offense for Inmates Released During 2010.....	35
Table 30: Inmate Releases by Type for Calendar Years 2009 and 2010.....	36
Table 31: Average Months Served by Inmates Initially Released in Calendar Years 2000.....	37
through 2010	
Table 32: Releases by Type for Inmates Serving a Life Sentence; Calendar Years 2000.....	38
through 2010	

Section IV: Miscellaneous

Miscellaneous Highlights.....	40
Table 33: Number of Breach Escapes from 2000 through 2010 by Facility.....	41
Table 34: Number of Walk Away Escapes from 2000 through 2010 by Facility.....	41
Table 35: Complement Control by Location as of December 31, 2010.....	42

Section V: Glossary

Glossary.....	44-45
---------------	-------

Graphs

Graph 1: State Prison Receptions by Type; 2000 to 2010.....	8
Graph 2: Court Commitments by Major Contributing Counties; 2010.....	10
Graph 3: Percentage of Court Commitments by Age Group; 2000 Compared to 2010.....	12
Graph 4: Court Commitments by Minimum Sentence Distribution; 2009 and 2010.....	15
Graph 5: Court Commitments by Maximum Sentence Distribution; 2009 and 2010.....	16
Graph 6: Incarceration Rates for the Top Ten Counties; 2009 and 2010.....	20
Graph 7: Offender Population versus Capacity; 2002 to 2010.....	23
Graph 8: Monthly Population Change 2000, 2005, and 2010.....	24
Graph 9: Inmate Status as of Year-End; 2000 to 2010.....	27
Graph 10: Distribution by Release Type; 2009 and 2010.....	36
Graph 11: Average Time Served by Inmates Released; Calendar Years 2000 through 2010.....	37



Section I

Receptions



Receptions

Between 2000 and 2010, the number of inmates admitted into the Department increased by 58.6%, from 11,673 in 2000 to 18,518 in 2010.

From 2000 through 2010, the number of parole violator admissions increased by 29.3%, from 4,348 in 2000 to 5,621 in 2010.

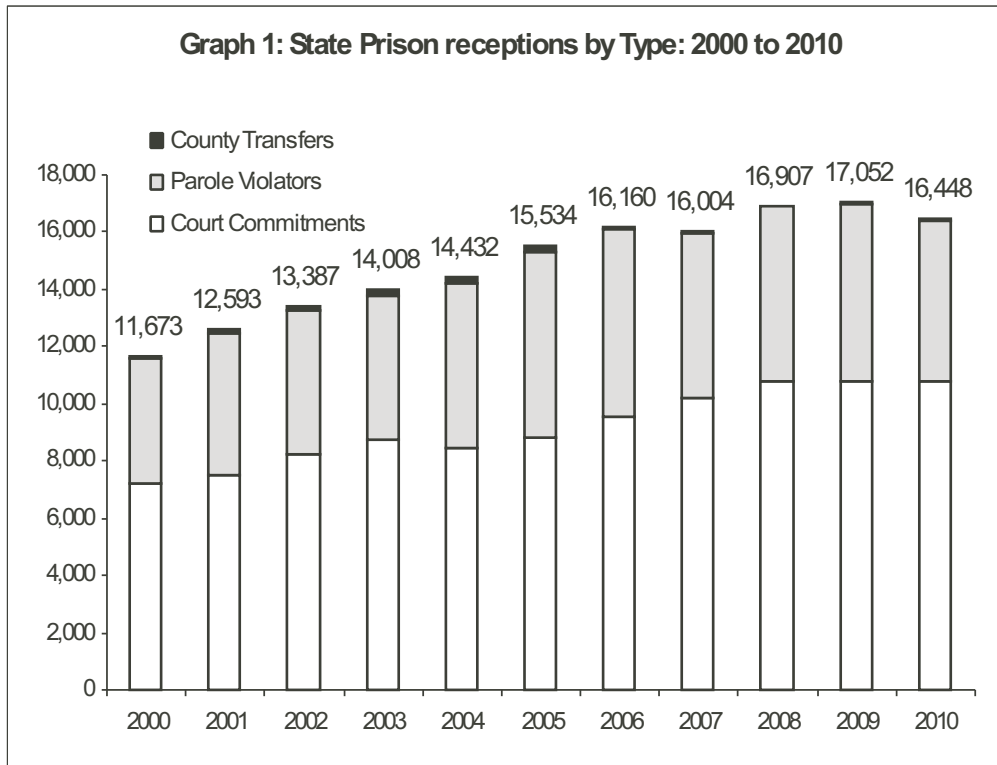
The number of court commitments grew by 49.7%, from 7,203 in 2000, to 10,781 in 2010.

Philadelphia County accounted for 22.4% of all new court commitments in 2010.

In 2010, more than half (57%) of all new court commitments were sentenced to a minimum sentence of two years or less. These inmates may be eligible for some type of release in 2012.

Of the total new court commitments, 85% received a maximum sentence of ten years or less. These inmates will complete their sentence and be released back to the community no later than 2020.

Year	Court Commitments			Parole Violators			County Transfers			Annual Total
	Male	Female	Sub-total	Male	Female	Sub-total	Male	Female	Sub-total	
2000	6,680	523	7,203	4,157	191	4,348	121	1	122	11,673
2001	6,924	586	7,510	4,682	273	4,955	122	6	128	12,593
2002	7,633	633	8,266	4,727	241	4,968	150	3	153	13,387
2003	8,067	693	8,760	4,786	242	5,028	215	5	220	14,008
2004	7,752	683	8,435	5,472	336	5,808	186	3	189	14,432
2005	8,027	803	8,830	6,186	319	6,505	196	3	199	15,534
2006	8,751	827	9,578	6,154	363	6,517	62	3	65	16,160
2007	9,326	896	10,222	5,473	280	5,753	27	2	29	16,004
2008	9,867	916	10,783	5,832	269	6,101	20	3	23	16,907
2009	9,878	920	10,798	5,782	385	6,167	75	12	87	17,052
2010	9,835	946	10,781	5,311	312	5,623	41	3	44	16,448



Receptions

Table 2: State Prison Receptions by Committing County and Offender Gender in 2010

County	Court Commitments			Parole Violators			County Receptions			Total			% of Total
	Male	Female	Sub-Total	Male	Female	Sub-Total	Male	Female	Sub-Total	Male	Female	Total	
Adams	129	7	136	40	3	43	0	0	0	169	10	179	1.1%
Allegheny	737	32	769	445	10	455	0	0	0	1,182	42	1,224	7.4%
Armstrong	25	0	25	10	0	10	0	0	0	35	0	35	0.2%
Beaver	84	1	85	28	0	28	0	0	0	112	1	113	0.7%
Bedford	43	7	50	13	0	13	0	0	0	56	7	63	0.4%
Berks	335	26	361	198	23	221	0	0	0	533	49	582	3.5%
Blair	112	20	132	40	7	47	0	0	0	152	27	179	1.1%
Bradford	59	7	66	17	1	18	1	0	1	77	8	85	0.5%
Bucks	282	23	305	94	2	96	2	0	2	378	25	403	2.5%
Butler	86	11	97	40	2	42	1	0	1	127	13	140	0.9%
Cambria	70	9	79	32	4	36	0	0	0	102	13	115	0.7%
Cameron	0	1	1	2	1	3	0	0	0	2	2	4	0.0%
Carbon	19	2	21	5	0	5	1	0	1	25	2	27	0.2%
Centre	50	11	61	13	0	13	0	0	0	63	11	74	0.4%
Chester	251	16	267	95	3	98	0	0	0	346	19	365	2.2%
Clarion	24	2	26	5	0	5	0	0	0	29	2	31	0.2%
Clearfield	93	18	111	40	9	49	0	0	0	133	27	160	1.0%
Clinton	24	8	32	9	1	10	0	0	0	33	9	42	0.3%
Columbia	19	2	21	12	2	14	0	0	0	31	4	35	0.2%
Crawford	58	3	61	23	1	24	0	0	0	81	4	85	0.5%
Cumberland	79	8	87	41	3	44	0	0	0	120	11	131	0.8%
Dauphin	413	31	444	214	11	225	1	0	1	628	42	670	4.1%
Delaware	560	63	623	181	2	183	0	0	0	741	65	806	4.9%
Elk	18	1	19	5	0	5	0	0	0	23	1	24	0.1%
Erie	194	30	224	203	23	226	0	0	0	397	53	450	2.7%
Fayette	188	81	269	113	14	127	0	0	0	301	95	396	2.4%
Forest	6	2	8	4	0	4	0	0	0	10	2	12	0.1%
Franklin	94	17	111	71	5	76	0	0	0	165	22	187	1.1%
Fulton	13	2	15	12	1	13	0	0	0	25	3	28	0.2%
Greene	25	5	30	10	1	11	0	0	0	35	6	41	0.2%
Huntingdon	23	3	26	14	2	16	0	0	0	37	5	42	0.3%
Indiana	35	5	40	22	3	25	0	0	0	57	8	65	0.4%
Jefferson	41	10	51	21	4	25	1	0	1	63	14	77	0.5%
Juniata	4	1	5	3	0	3	0	0	0	7	1	8	0.0%
Lackawanna	299	34	333	142	13	155	0	0	0	441	47	488	3.0%
Lancaster	316	29	345	157	11	168	0	0	0	473	40	513	3.1%
Lawrence	55	8	63	36	4	40	0	0	0	91	12	103	0.6%
Lebanon	115	17	132	82	4	86	0	0	0	197	21	218	1.3%
Lehigh	314	27	341	166	7	173	0	0	0	480	34	514	3.1%
Luzerne	183	20	203	88	9	97	0	0	0	271	29	300	1.8%
Lycoming	126	16	142	68	12	80	0	0	0	194	28	222	1.3%
McKean	43	8	51	17	2	19	1	0	1	61	10	71	0.4%
Mercer	86	8	94	35	8	43	1	0	1	122	16	138	0.8%
Mifflin	39	6	45	10	2	12	0	0	0	49	8	57	0.3%
Monroe	83	6	89	54	4	58	0	0	0	137	10	147	0.9%
Montgomery	379	43	422	142	12	154	0	0	0	521	55	576	3.5%
Montour	14	2	16	5	2	7	0	0	0	19	4	23	0.1%
Northampton	179	24	203	100	6	106	0	0	0	279	30	309	1.9%
Northumberland	63	8	71	33	6	39	0	0	0	96	14	110	0.7%
Perry	35	3	38	10	2	12	0	0	0	45	5	50	0.3%
Philadelphia	2321	99	2420	1,554	27	1,581	32	3	35	3,907	129	4036	24.5%
Pike	43	14	57	20	1	21	0	0	0	63	15	78	0.5%
Potter	6	0	6	4	0	4	0	0	0	10	0	10	0.1%
Schuylkill	99	24	123	35	5	40	0	0	0	134	29	163	1.0%
Snyder	17	1	18	21	4	25	0	0	0	38	5	43	0.3%
Somerset	49	4	53	20	5	25	0	0	0	69	9	78	0.5%
Sullivan	4	0	4	1	0	1	0	0	0	5	0	5	0.0%
Susquehanna	17	0	17	4	0	4	0	0	0	21	0	21	0.1%
Tioga	13	0	13	6	0	6	0	0	0	19	0	19	0.1%
Union	29	3	32	13	4	17	0	0	0	42	7	49	0.3%
Unknown/Others	6	0	6	0	0	0	0	0	0	6	0	6	0.0%
Venango	66	10	76	39	5	44	0	0	0	105	15	120	0.7%
Warren	57	12	69	23	2	25	0	0	0	80	14	94	0.6%
Washington	104	10	114	41	2	43	0	0	0	145	12	157	1.0%
Wayne	31	9	40	28	2	30	0	0	0	59	11	70	0.4%
Westmoreland	110	7	117	67	4	71	0	0	0	177	11	188	1.1%
Wyoming	22	0	22	13	0	13	0	0	0	35	0	35	0.2%
York	319	29	348	202	9	211	0	0	0	521	38	559	3.4%
Total	9835	946	10,781	5,311	312	5,623	41	3	44	15,187	1,261	16,448	100.0%

Note: Total may not equal 100% due to rounding.

Table 3: Ten Counties with the Highest Court Commitment Activity in 2010

Rank	County	Court Commitments	% of State Total
1	PHILADELPHIA	2420	22.4%
2	ALLEGHENY	769	7.1%
3	DELAWARE	623	5.8%
4	DAUPHIN	444	4.1%
5	MONTGOMERY	422	3.9%
6	BERKS	361	3.3%
7	YORK	348	3.2%
8	LANCASTER	345	3.2%
9	LEHIGH	341	3.2%
10	LACKAWANNA	333	3.1%
	Sub Total	6,406	59.4%
	Remaining Counties	4,375	40.6%
	State Total	10,781	100.0%

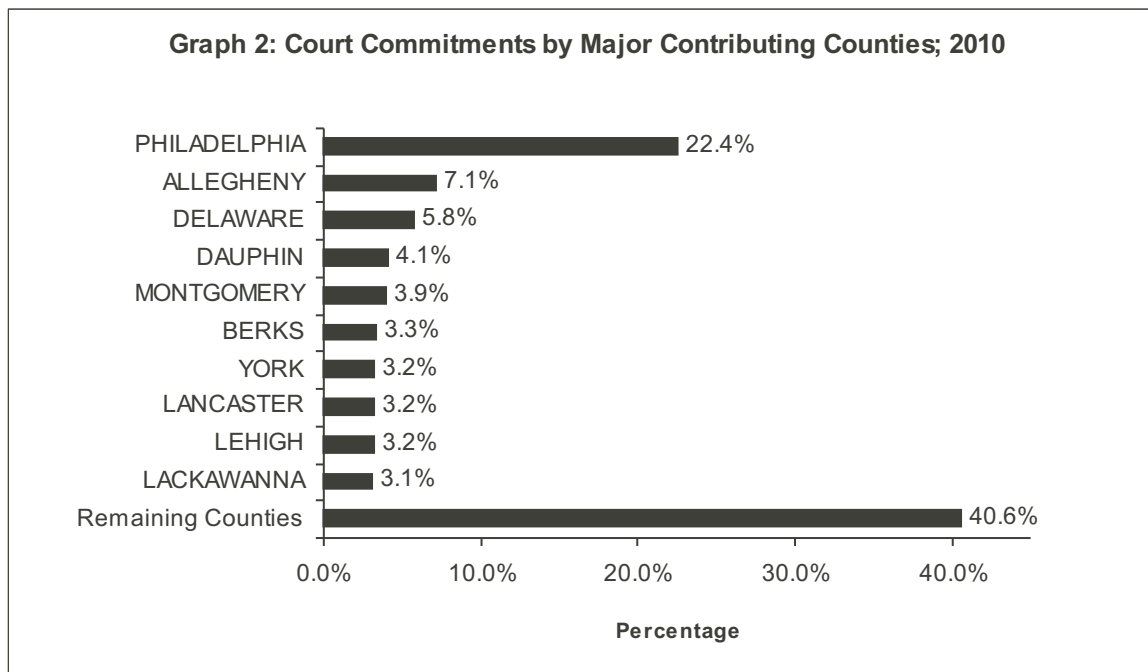
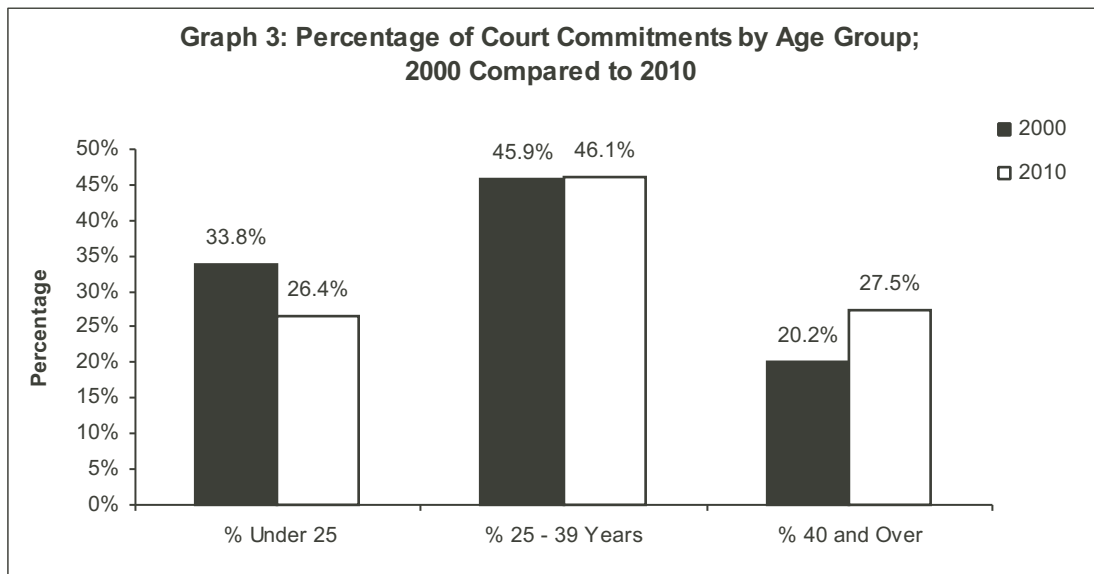


Table 4: Court Commitments by County for 2009 and 2010

County	Court Commitments		Growth Factor %
	2009	2010	
Adams	101	136	34.7
Allegheny	647	769	18.9
Armstrong	22	25	13.6
Beaver	53	85	60.4
Bedford	48	50	4.2
Berks	410	361	-12.0
Blair	155	132	-14.8
Bradford	47	66	40.4
Bucks	353	305	-13.6
Butler	95	97	2.1
Cambria	63	79	25.4
Cameron	4	1	-75.0
Carbon	19	21	10.5
Centre	59	61	3.4
Chester	287	267	-7.0
Clarion	33	26	-21.2
Clearfield	127	111	-12.6
Clinton	26	32	23.1
Columbia	47	21	-55.3
Crawford	62	61	-1.6
Cumberland	72	87	20.8
Dauphin	364	444	22.0
Delaware	553	623	12.7
Elk	15	19	26.7
Erie	289	224	-22.5
Fayette	200	269	34.5
Forest	5	8	60.0
Franklin	93	111	19.4
Fulton	14	15	7.1
Greene	26	30	15.4
Huntingdon	24	26	8.3
Indiana	20	40	100.0
Jefferson	45	51	13.3
Juniata	7	5	-28.6
Lackawanna	328	333	1.5
Lancaster	342	345	0.9
Lawrence	66	63	-4.5
Lebanon	159	132	-17.0
Lehigh	281	341	21.4
Luzerne	219	203	-7.3
Lycoming	171	142	-17.0
Mckean	41	51	24.4
Mercer	87	94	8.0
Mifflin	48	45	-6.3
Monroe	115	89	-22.6
Montgomery	372	422	13.4
Montour	14	16	14.3
Northampton	254	203	-20.1
Northumberland	85	71	-16.5
Perry	28	38	35.7
Philadelphia	2,687	2,420	-9.9
Pike	47	57	21.3
Potter	9	6	-33.3
Schuylkill	118	123	4.2
Snyder	49	18	-63.3
Somerset	57	53	-7.0
Sullivan	3	4	0.0
Susquehanna	12	17	41.7
Tioga	24	13	-45.8
Union	32	32	0.0
Venango	72	76	5.6
Warren	60	69	15.0
Washington	124	114	-8.1
Wayne	53	40	-24.5
Westmoreland	114	117	2.6
Wyoming	16	22	37.5
York	324	348	7.4
Out of State	2	6	200.0
Total	10,798	10,781	-0.2

Table 5: Court Commitments Received from 2000 through 2010 by Age Group

Age	2000	2001	2002	2003	2004	2005	2006	2007	2008	2009	2010
Under 18	43	34	32	66	46	25	38	45	76	86	38
18-20	752	707	706	889	883	650	787	810	993	962	791
21-24	1,643	1,650	1,793	1,845	1,769	1,749	1,846	2,032	2,043	1,953	2,017
25-29	1,256	1,396	1,505	1,619	1,664	1,731	1,887	2,069	2,124	2,183	2,121
30-34	1,067	1,165	1,223	1,243	1,146	1,252	1,293	1,375	1,482	1,546	1,695
35-39	986	949	1,144	1,135	978	1,107	1,209	1,177	1,235	1,236	1,158
40-44	725	769	894	902	916	1,018	1,033	1,130	1,121	1,070	1,082
45-49	420	451	541	555	530	703	743	806	872	863	852
50-54	179	204	239	283	292	318	424	455	484	508	567
55-59	70	109	101	129	125	167	183	192	209	223	282
60-64	34	46	53	51	47	67	93	92	96	107	117
65 and Over	28	30	35	43	39	43	42	39	48	61	61
Total	7,203	7,510	8,266	8,760	8,435	8,830	9,578	10,222	10,783	10,798	10,781
% Under 25	33.8	31.8	30.6	32.0	32.0	27.5	27.9	28.2	28.9	27.8	26.4
% 25 - 39 Years	45.9	46.7	46.8	45.6	44.9	46.3	45.8	45.2	44.9	46.0	46.1
% 40 and Over	20.2	21.4	22.5	22.4	23.1	26.2	26.3	26.6	26.2	26.2	27.5



Receptions

Table 6: Profile of Court Commitments Received by Age, Race, and Gender in 2009

Age	Race								Gender				Total
	White		Black		Hispanic		Other		Male		Female		
	Number	%	Number	%	Number	%	Number	%	Number	%	Number	%	
Under 18	8	0.1%	65	0.6%	10	0.1%	3	0.0%	84	0.8%	2	0.0%	86
18-20	292	2.7%	580	5.4%	86	0.8%	4	0.0%	926	8.6%	36	0.3%	962
21-24	734	6.8%	971	9.0%	227	2.1%	21	0.2%	1,826	16.9%	127	1.2%	1,953
25-29	936	8.7%	959	8.9%	275	2.5%	13	0.1%	2,010	18.6%	173	1.6%	2,183
30-34	652	6.0%	669	6.2%	218	2.0%	7	0.1%	1,436	13.3%	110	1.0%	1,546
35-39	554	5.1%	508	4.7%	169	1.6%	5	0.0%	1,078	10.0%	158	1.5%	1,236
40-44	553	5.1%	393	3.6%	115	1.1%	9	0.1%	940	8.7%	130	1.2%	1,070
45-49	468	4.3%	312	2.9%	79	0.7%	4	0.0%	756	7.0%	107	1.0%	863
50-54	280	2.6%	188	1.7%	38	0.4%	2	0.0%	456	4.2%	52	0.5%	508
55-59	127	1.2%	76	0.7%	18	0.2%	2	0.0%	203	1.9%	20	0.2%	223
60-64	61	0.6%	34	0.3%	11	0.1%	1	0.0%	103	1.0%	4	0.0%	107
65 and Over	43	0.4%	15	0.1%	3	0.0%	0	0.0%	60	0.6%	1	0.0%	61
Total	4,708	43.6%	4,770	44.2%	1,249	11.6%	71	0.7%	9,878	91.5%	920	8.5%	10,798
% Under 25	22.0%	-	33.9%	-	25.9%	-	39.4%	-	28.7%	-	17.9%	-	27.8%
% 25 to 39	44.9%	-	44.1%	-	50.5%	-	41.7%	-	45.0%	-	47.9%	-	45.2%
% 40 & Over	32.5%	-	21.3%	-	21.1%	-	25.4%	-	25.5%	-	34.1%	-	26.2%

Table 7: Profile of Court Commitments Received by Age, Race, and Gender in 2010

Age	Race								Gender				Total
	White		Black		Hispanic		Other		Male		Female		
	Number	%	Number	%	Number	%	Number	%	Number	%	Number	%	
Under 18	3	0.0%	31	0.3%	4	0.0%	0	0.0%	36	0.3%	2	0.0%	38
18-20	222	2.1%	474	4.4%	92	0.9%	3	0.0%	763	7.1%	28	0.3%	791
21-24	759	7.0%	1,039	9.6%	207	1.9%	12	0.1%	1,890	17.5%	127	1.2%	2,017
25-29	974	9.0%	860	8.0%	268	2.5%	19	0.2%	1,938	18.0%	183	1.7%	2,121
30-34	746	6.9%	718	6.7%	222	2.1%	9	0.1%	1,526	14.2%	169	1.6%	1,695
35-39	521	4.8%	444	4.1%	183	1.7%	10	0.1%	1,033	9.6%	125	1.2%	1,158
40-44	559	5.2%	381	3.5%	130	1.2%	12	0.1%	956	8.9%	126	1.2%	1,082
45-49	477	4.4%	305	2.8%	69	0.6%	1	0.0%	753	7.0%	99	0.9%	852
50-54	317	2.9%	197	1.8%	45	0.4%	8	0.1%	511	4.7%	56	0.5%	567
55-59	143	1.3%	111	1.0%	24	0.2%	4	0.0%	259	2.4%	23	0.2%	282
60-64	62	0.6%	44	0.4%	11	0.1%	0	0.0%	111	1.0%	6	0.1%	117
65 and Over	46	0.4%	11	0.1%	4	0.0%	0	0.0%	59	0.5%	2	0.0%	61
Total	4,829	44.8%	4,615	42.8%	1,259	11.7%	78	0.7%	9,835	91.2%	946	8.8%	10,781
% Under 25	20.4%	-	33.5%	-	24.1%	-	19.2%	-	27.3%	-	16.6%	-	26.4%
% 25 to 39	46.4%	-	43.8%	-	53.5%	-	48.7%	-	45.7%	-	50.4%	-	46.1%
% 40 & Over	33.2%	-	22.7%	-	22.5%	-	32.1%	-	26.9%	-	33.0%	-	27.5%

Table 8: Comparison of Court Commitments by Offense for 2009 and 2010

Table 8: Comparison of Court Commitments by Offense for 2009 and 2010						
Part I Offenses	2009		2010		Change 2009-2010	
	Number	%	Number	%	Number	%
Murder						
First Degree	114	1.1%	94	0.9%	-20	-17.5%
Second Degree	17	0.2%	30	0.3%	13	76.5%
Third Degree	192	1.8%	189	1.8%	-3	-1.6%
Unspecified	4	0.0%	3	0.0%	-1	-25.0%
Manslaughter						
Voluntary	12	0.1%	27	0.3%	15	125.0%
Involuntary	22	0.2%	20	0.2%	-2	-9.1%
Aggravated Assault	843	7.8%	882	8.2%	39	4.6%
Arson	46	0.4%	58	0.5%	12	26.1%
Burglary	628	5.8%	725	6.7%	97	15.4%
Forcible Rape	157	1.5%	146	1.4%	-11	-7.0%
Homicide by Vehicle	63	0.6%	66	0.6%	3	4.8%
Robbery	945	8.8%	971	9.0%	26	2.8%
Theft/Larceny	837	7.8%	853	7.9%	16	1.9%
Total Part I Offenses	3,880	35.9%	4,064	37.7%	184	4.7%
Part II Offenses	2009		2010		Change 2009-2010	
	Number	%	Number	%	Number	%
DUI	708	6.6%	601	5.6%	-107	-15.1%
Forgery	123	1.1%	104	1.0%	-19	-15.4%
Fraud	67	0.6%	74	0.7%	7	10.4%
Kidnapping	23	0.2%	22	0.2%	-1	-4.3%
Narcotic Drug Laws	3,378	31.3%	3,225	29.9%	-153	-4.5%
Other Assaults	170	1.6%	159	1.5%	-11	-6.5%
Other Sex Offenses	558	5.2%	592	5.5%	34	6.1%
Prison Breach	116	1.1%	95	0.9%	-21	-18.1%
Receiving Stolen Property	158	1.5%	139	1.3%	-19	-12.0%
Statutory Rape	173	1.6%	150	1.4%	-23	-13.3%
Weapons	619	5.7%	743	6.9%	124	20.0%
Other Part II Offenses	808	7.5%	806	7.5%	-2	-0.2%
Total Part II Offenses	6,901	63.9%	6,710	62.2%	-191	-2.8%
Other	17	0.2%	7	0.1%	-10	-0.1%
Total Offenses	10,798	100.0%	10,781	100.0%	-17	-0.2%

Note: More accurate data collection methods have led to an increase in certain Part II categories, such as DUI, and a decrease in Other Part II Offenses.

Table 9: Court Commitments by Minimum Sentence and Offender Gender in 2010

Minimum Sentence	Male		Female		Total	
	Number	%	Number	%	Number	%
1 Year and Under	2,203	22.4%	381	40.3%	2,584	24.0%
Over 1 to 2 Years	3,220	32.7%	330	34.9%	3,550	32.9%
Over 2 to 3 Years	1,667	16.9%	101	10.7%	1,768	16.4%
Over 3 to 5 Years	1,430	14.5%	78	8.2%	1,508	14.0%
Over 5 to 10 Years	762	7.7%	40	4.2%	802	7.4%
Over 10 to 20 Years	284	2.9%	8	0.8%	292	2.7%
Over 20 Years	144	1.5%	2	0.2%	146	1.4%
Life	123	1.3%	6	0.6%	129	1.2%
Death Sentence	1	0.0%	0	0.0%	1	0.0%
Not Reported as of Year End	1	0.0%	0	0.0%	1	0.0%
Total	9,835	100.0%	946	100.0%	10,781	100.0%

Note: Totals may not equal 100% due to rounding.

Graph 4: Court Commitments by Minimum Sentence Distribution: 2009 and 2010

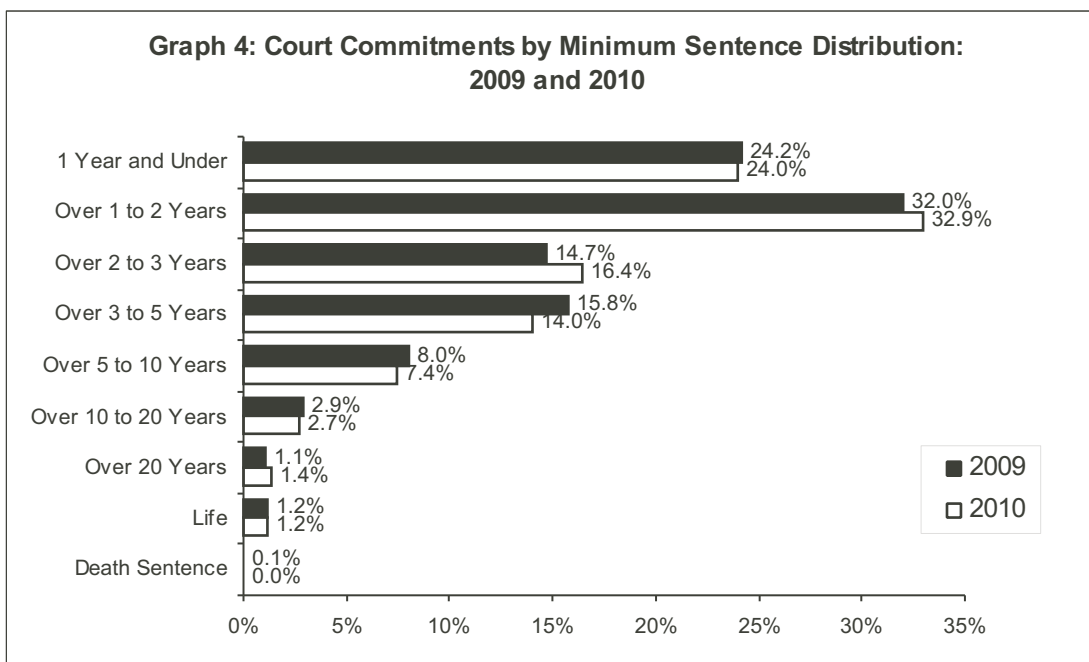
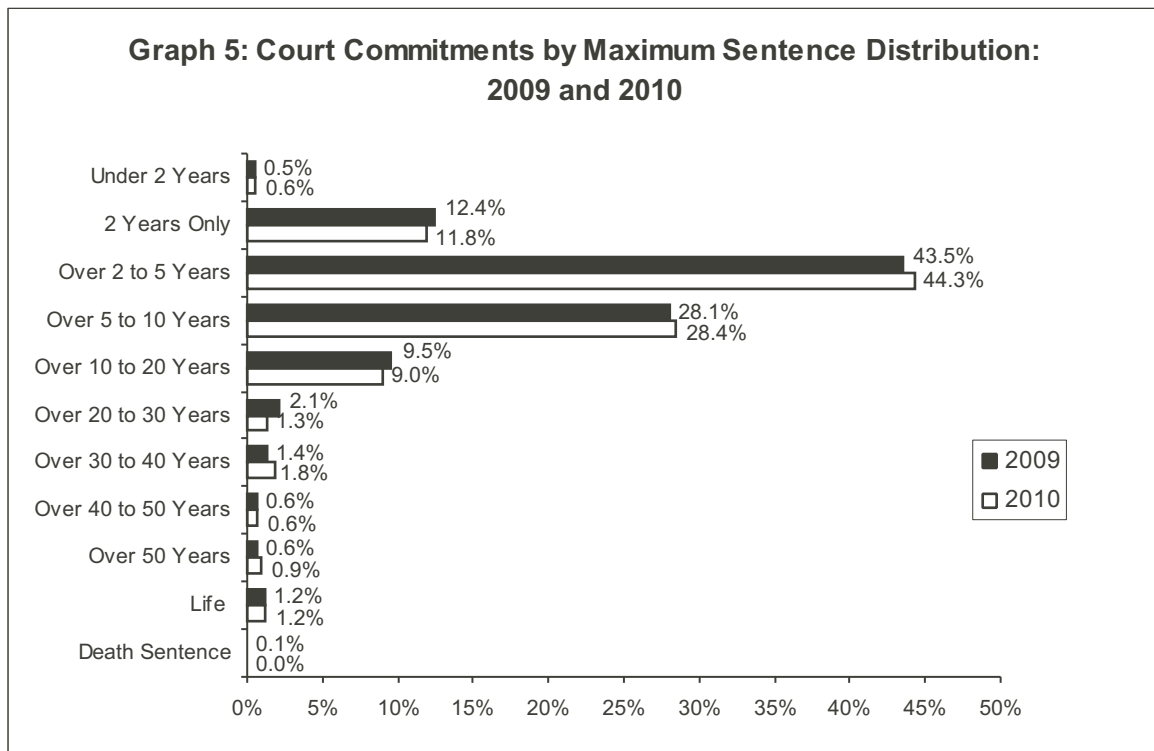


Table 10: Court Commitments by Maximum Sentence and Offender Gender in 2010

Maximum Sentence	Male		Female		Total	
	Number	%	Number	%	Number	%
Under 2 Years	16	0.2%	46	4.9%	62	0.6%
2 Years Only	1,132	11.5%	145	15.3%	1,277	11.8%
Over 2 to 5 Years	4,301	43.7%	474	50.1%	4,775	44.3%
Over 5 to 10 Years	2,859	29.1%	207	21.9%	3,066	28.4%
Over 10 to 20 Years	919	9.3%	55	5.8%	974	9.0%
Over 20 to 30 Years	137	1.4%	3	0.3%	140	1.3%
Over 30 to 40 Years	187	1.9%	8	0.8%	195	1.8%
Over 40 to 50 Years	65	0.7%	1	0.1%	66	0.6%
Over 50 Years	93	0.9%	1	0.1%	94	0.9%
Life	124	1.3%	6	0.6%	130	1.2%
Death Sentence	1	0.0%	0	0.0%	1	0.0%
Not Reported as of Year End	1	0.0%	0	0.0%	1	0.0%
Total	9,835	100.0%	946	100.0%	10,781	100.0%

Note: Totals may not equal 100% due to rounding.

Graph 5: Court Commitments by Maximum Sentence Distribution: 2009 and 2010



Receptions

Table 11: Profile of Offenders Serving a Life Sentence Received from 2000 through 2010

Commmitting County	Calendar Year										
	2000	2001	2002	2003	2004	2005	2006	2007	2008	2009	2010
Philadelphia	47	51	42	46	58	58	72	42	55	52	62
Allegheny	15	19	14	14	17	19	20	7	24	21	16
Other Counties	54	54	56	61	57	57	54	75	50	53	52
Total	116	124	112	121	132	134	146	124	129	126	130
Age	2000	2001	2002	2003	2004	2005	2006	2007	2008	2009	2010
Under 20	11	6	7	15	7	13	21	12	17	22	7
20 To 24	46	44	36	39	47	41	39	37	29	31	46
25 To 29	22	27	30	23	32	24	32	28	26	29	28
30 To 34	9	13	12	12	14	23	22	14	19	18	21
35 To 39	6	13	7	15	11	11	12	7	10	8	10
40 To 44	10	10	6	6	9	6	7	9	14	8	7
45 and Over	12	11	14	11	12	16	13	17	14	10	11
Race	2000	2001	2002	2003	2004	2005	2006	2007	2008	2009	2010
White	36	35	34	29	37	26	30	43	34	29	19
Non-White	80	89	78	92	95	108	116	81	95	97	111
Gender	2000	2001	2002	2003	2004	2005	2006	2007	2008	2009	2010
Male	107	122	110	116	127	127	140	115	120	122	124
Female	9	2	2	5	5	7	6	9	9	4	6
Total	116	124	112	121	132	134	146	124	129	126	130



Section II

Population



Population

The overall incarceration rate in Pennsylvania was 404 per 100,000 state residents in 2010. Nationally, the incarceration rate of state prisoners was 408.5 per 100,000 residents for year end 2009, the most recent year in which statistics are available (U.S. Bureau of Justice Statistics).

From 2009 to 2010, the number of inmates incarcerated has decreased by 0.3%, from 51,487 to 51,321.

At the end of 2010, the population was comprised of 86% sentenced offenders and 13.6% parole violators.

A demographic breakdown of the Department's inmates indicates that offender age, race, and gender have remained relatively constant between 2009 and 2010.

In 2010, the majority of DOC offenders were African Americans (49%), followed by Caucasians (39%), Hispanic (11%), and other races (1%).

As of calendar year-end 2010, the DOC population consisted of 48,603 males and 2,718 females.

In 2010, the average minimum sentence length for Part One Offenders was 8.9 years and the average maximum sentence length was 19.2 years. For Part Two Offenders, the average minimum sentence length was 4.1 years and the average maximum sentence length was 9.4 years.

The number of inmates serving a minimum sentence of more than 20 years (excluding inmates serving life sentences and capital cases) increased by 7.9% from 1,768 in 2009 to 1,908 in 2010.

The following are characteristics of offenders serving life sentences in the Department:

The number of offenders serving a life sentence increased by 2.6%, from 4,706 in 2009 to 4,829 in 2010.

The average age of inmates serving life sentences in 2010 was 44 years. The average age of 44 years for inmates serving life sentences remains higher than the average of 37 years for the total population.

Table 12: Rank Order of Ten Counties with Highest State Incarceration Rate for 2009 and 2010*

Ranking	County	Incarceration Rate for 2009	Incarceration Rate for 2010	Percent Change
1	Philadelphia County	1,022.3	1,022.2	0.0%
2	Dauphin County	832.3	795.2	-4.5%
3	Venango County	644.1	656.6	1.9%
4	Fayette County	493.0	559.3	13.5%
5	Fulton County	505.0	545.6	8.0%
6	Lebanon County	563.2	536.1	-4.8%
7	Lycoming County	539.2	519.3	-3.7%
8	Lackawanna County	506.7	514.4	1.5%
9	Jefferson County	513.1	488.9	-4.7%
10	Erie County	505.5	468.3	-7.4%

* Ranking by incarceration rate per 100,000 residents. Note: incarceration rate calculations are based on the number of offenders incarcerated in the state prison system for each committing county. This rate does not include county or federal inmates.

* Data based on estimated population and Census data provided by the Pennsylvania State Data Center.

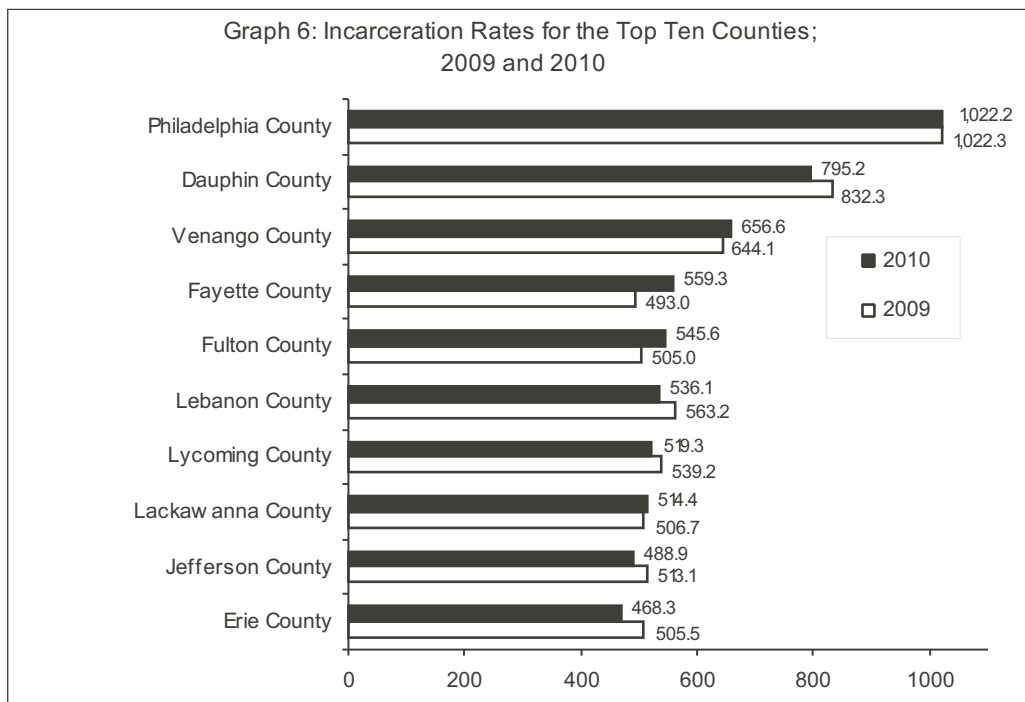


Table 13: Inmate Population by County and Gender on December 31; Calendar Years 2009 and 2010

County	December 31, 2009				December 31, 2010			
	Male	Female	Total	% of Total	Male	Female	Total	% of Total
Adams	304	30	334	0.6%	360	27	387	0.8%
Allegheny	3,766	145	3,911	7.6%	3,904	130	4,034	7.9%
Armstrong	100	12	112	0.2%	102	6	108	0.2%
Beaver	297	12	309	0.6%	319	9	328	0.6%
Bedford	146	12	158	0.3%	142	16	158	0.3%
Berks	1,715	128	1,843	3.6%	1,634	113	1,747	3.4%
Blair	485	78	563	1.1%	478	78	556	1.1%
Bradford	229	15	244	0.5%	235	15	250	0.5%
Bucks	1,180	61	1,241	2.4%	1,175	65	1,240	2.4%
Butler	363	32	395	0.8%	330	31	361	0.7%
Cambria	247	16	263	0.5%	280	16	296	0.6%
Cameron	19		19	0.0%	15	2	17	0.0%
Carbon	99	5	104	0.2%	102	5	107	0.2%
Centre	227	9	236	0.5%	225	15	240	0.5%
Chester	1,172	66	1,238	2.4%	1,185	64	1,249	2.4%
Clarion	109	7	116	0.2%	101	6	107	0.2%
Clearfield	350	42	392	0.8%	330	25	355	0.7%
Clinton	84	11	95	0.2%	87	16	103	0.2%
Columbia	110	15	125	0.2%	91	8	99	0.2%
Crawford	270	24	294	0.6%	264	19	283	0.6%
Cumberland	329	29	358	0.7%	344	28	372	0.7%
Dauphin	2,028	127	2,155	4.2%	2,030	102	2,132	4.2%
Delaware	1,853	114	1,967	3.8%	1,952	117	2,069	4.0%
Elk	60	4	64	0.1%	64	6	70	0.1%
Erie	1,328	89	1,417	2.8%	1,240	74	1,314	2.6%
Fayette	616	87	703	1.4%	675	89	764	1.5%
Forest	24		24	0.0%	20	1	21	0.0%
Franklin	502	36	538	1.0%	467	37	504	1.0%
Fulton	71	4	75	0.1%	76	5	81	0.2%
Greene	113	8	121	0.2%	107	11	118	0.2%
Huntingdon	91	12	103	0.2%	104	18	122	0.2%
Indiana	151	4	155	0.3%	140	7	147	0.3%
Jefferson	206	23	229	0.4%	196	25	221	0.4%
Juniata	55	3	58	0.1%	45	3	48	0.1%
Lackawanna	964	94	1,058	2.1%	1,017	86	1,103	2.1%
Lancaster	1,461	97	1,558	3.0%	1,520	104	1,624	3.2%
Lawrence	284	28	312	0.6%	273	24	297	0.6%
Lebanon	681	54	735	1.4%	665	51	716	1.4%
Lehigh	1,272	63	1,335	2.6%	1,279	65	1,344	2.6%
Luzerne	847	69	916	1.8%	835	64	899	1.8%
Lycoming	576	54	630	1.2%	548	55	603	1.2%
Mckean	105	8	113	0.2%	123	11	134	0.3%
Mercer	336	28	364	0.7%	335	29	364	0.7%
Mifflin	157	22	179	0.3%	168	24	192	0.4%
Monroe	339	37	376	0.7%	374	30	404	0.8%
Montgomery	1,519	97	1,616	3.1%	1,543	109	1,652	3.2%
Montour	51	8	59	0.1%	50	7	57	0.1%
Northampton	795	63	858	1.7%	751	60	811	1.6%
Northumberland	264	34	298	0.6%	265	31	296	0.6%
Perry	129	15	144	0.3%	140	13	153	0.3%
Philadelphia	15,359	459	15,818	30.7%	15,165	434	15,599	30.4%
Pike	118	12	130	0.3%	138	21	159	0.3%
Potter	48		48	0.1%	46		46	0.1%
Schuylkill	370	34	404	0.8%	366	39	405	0.8%
Snyder	164	15	179	0.3%	139	10	149	0.3%
Somerset	158	9	167	0.3%	170	12	182	0.4%
Sullivan	11		11	0.0%	13		13	0.0%
Susquehanna	75	3	78	0.2%	74	2	76	0.1%
Tioga	92	8	100	0.2%	83	4	87	0.2%
Union	145	9	154	0.3%	137	7	144	0.3%
Venango	326	23	349	0.7%	330	31	361	0.7%
Warren	145	27	172	0.3%	167	22	189	0.4%
Washington	427	36	463	0.9%	456	33	489	1.0%
Wayne	198	16	214	0.4%	169	18	187	0.4%
Westmoreland	589	44	633	1.2%	576	32	608	1.2%
Wyoming	78	5	83	0.2%	87	5	92	0.2%
York	1,811	95	1,906	3.7%	1,718	91	1,809	3.5%
Unknown/ Other	63	5	68	0.1%	64	5	69	0.1%
Total	48,656	2,831	51,487	100.0%	48,603	2,718	51,321	100.0%

Note: Totals may not equal 100% due to rounding.

Table 14: Rank-Ordered Comparison of Civilian Population and State Incarceration Rates for 2009 and 2010

County	2009			2010		
	Civilian Population*	Rate per 100,000	Rank	Civilian Population*	Rate per 100,000	Rank
Philadelphia	1,547,297	1,022.3	1	1,526,006	1,022.2	1
Dauphin	258,934	832.3	2	268,100	795.2	2
Venango	54,183	644.1	3	54,984	656.6	3
Fayette	142,605	493.0	10	136,606	559.3	4
Fulton	14,852	505.0	9	14,845	545.6	5
Lebanon	130,506	563.2	4	133,568	536.1	6
Lycoming	116,840	539.2	5	116,111	519.3	7
Lackawanna	208,801	506.7	7	214,437	514.4	8
Jefferson	44,634	513.1	6	45,200	488.9	9
Erie	280,291	505.5	8	280,566	468.3	10
Warren	40,638	423.2	16	41,815	452.0	11
Blair	126,122	446.4	14	127,089	437.5	12
Clearfield	82,324	476.2	11	81,642	434.8	13
Berks	407,125	452.7	13	411,442	424.6	14
York	428,937	444.4	15	434,972	415.9	15
Mifflin	45,937	389.7	19	46,682	411.3	16
Bradford	61,131	399.1	18	62,622	399.2	17
Lehigh	343,519	388.6	20	349,497	384.6	18
Adams	102,323	326.4	29	101,407	381.6	19
Snyder	38,519	464.7	12	39,702	375.3	20
Delaware	558,028	352.5	25	558,979	370.1	21
Wayne	51,337	416.9	17	52,822	354.0	22
Franklin	144,994	371.0	21	149,618	336.9	23
Cameron	5,163	368.0	22	5,085	334.3	24
Perry	45,502	316.5	33	45,969	332.8	25
Allegheny	1,218,494	321.0	31	1,223,348	329.8	26
Lawrence	90,160	346.1	26	91,108	326.0	27
Wyoming	27,808	298.5	37	28,276	325.4	28
Union	43,560	353.5	24	44,947	320.4	29
Crawford	88,521	332.1	28	88,765	318.8	30
Bedford	49,579	318.7	32	49,762	317.5	31
Northumberland	91,311	326.4	30	94,528	313.1	32
Lancaster	507,766	306.8	36	519,445	312.6	33
Mercer	116,071	313.6	34	116,638	312.1	34
Montour	17,715	333.1	27	18,267	312.0	35
McKean	43,196	261.6	43	43,450	308.4	36
Greene	39,245	308.3	35	38,686	305.0	37
Luzerne	312,845	292.8	39	320,918	280.1	38
Pike	60,529	214.8	52	57,369	277.2	39
Schuylkill	146,952	274.9	42	148,289	273.1	40
Northampton	298,990	287.0	41	297,735	272.4	41
Forest	6,775	354.2	23	7,716	272.2	42
Clarion	39,479	293.8	38	39,988	267.6	43
Huntingdon	45,395	226.9	48	45,913	265.7	44
Potter	16,714	287.2	40	17,457	263.5	45
Clinton	36,797	258.2	44	39,238	262.5	46
Chester	498,894	248.1	46	498,886	250.4	47
Monroe	166,355	226.0	49	169,842	237.9	48
Washington	207,389	223.3	50	207,820	235.3	49
Somerset	76,953	217.0	51	77,742	234.1	50
Elk	32,011	199.9	55	31,946	219.1	51
Tioga	40,875	244.6	47	41,981	207.2	52
Montgomery	782,339	206.6	54	799,874	206.5	53
Cambria	143,998	182.6	59	143,679	206.0	54
Sullivan	6,140	179.2	61	6,428	202.2	55
Bucks	626,015	198.2	56	625,249	198.3	56
Butler	184,694	213.9	53	183,862	196.3	57
Juniaata	23,118	250.9	45	24,636	194.8	58
Beaver	171,673	180.0	60	170,539	192.3	59
Susquehanna	40,646	191.9	58	43,356	175.3	60
Westmoreland	362,251	174.7	63	365,169	166.5	61
Indiana	87,450	177.2	62	88,880	165.4	62
Carbon	63,865	162.8	65	65,249	164.0	63
Cumberland	232,483	154.0	67	235,406	158.0	64
Armstrong	67,851	165.1	64	68,941	156.7	65
Centre	146,212	161.4	66	153,990	155.9	66
Columbia	65,111	192.0	57	67,295	147.1	67
Total	12,604,767	408.5	0	12,702,379	404.0	0

* Data based on estimated population provided by the Pennsylvania State Data Center.

Population

Table 15: Inmate Population Versus State Institutional Capacity From 2000 through 2010

Year	Number of Inmates	Multiple Occupancy Capacity	Percent of Capacity
2000	36,802	33,180	110.9%
2001	38,067	33,757	112.2%
2002	40,172	34,583	115.7%
2003	40,850	34,240	118.9%
2004	41,000	37,570	108.8%
2005	42,486	38,357	110.5%
2006	44,450	38,547	114.9%
2007	46,028	41,692	110.2%
2008	49,307	43,298	113.7%
2009	51,487	43,584	117.9%
2010	51,321	43,837	117.1%

Notes: The 2001-2004 percent of capacity does not include the Forensic Psychiatric Unit population at SCI Waymart. As of May 31, 2004, the Department began reporting "Operational Bed Capacity", which represents the optimal number of inmates that each facility can house based on a number of factors. In addition to cell size and security level, "Operational Bed Capacity" takes into consideration availability of inmate employment or programming, support services, and facility infrastructure. Prior capacity ratings were based solely on the physical characteristics of the cells (i.e., cell size and security level). This is not a change in how the Department operates. It is rather a change in how the Department assesses capacity with respect to quality of life and safety for both staff and inmates.

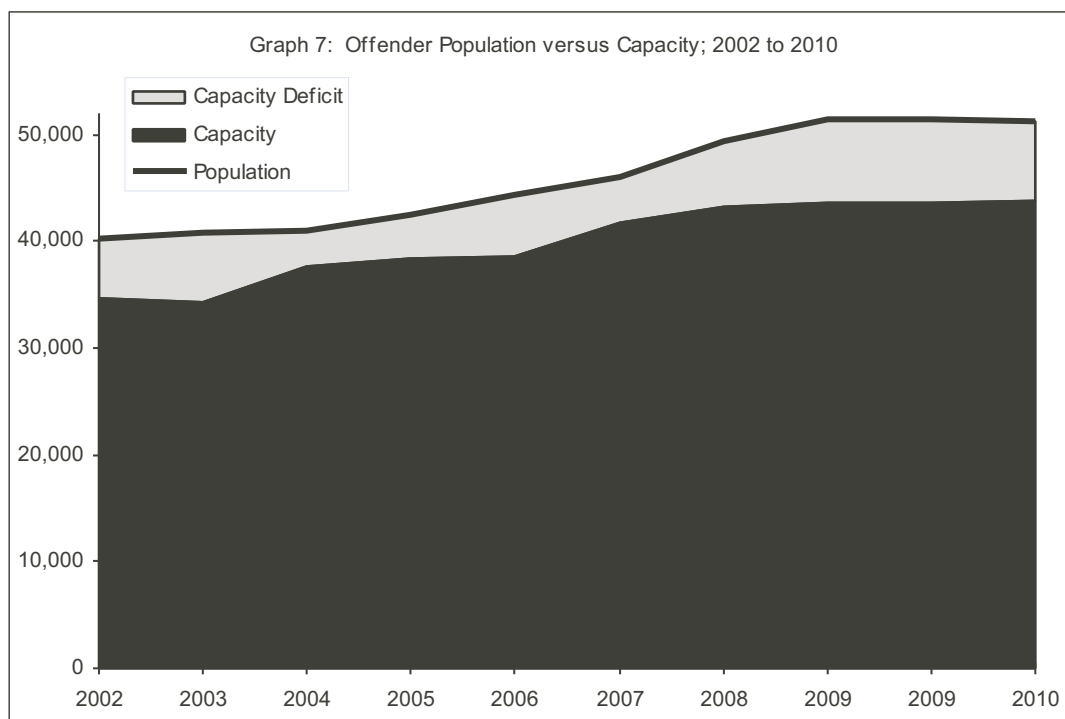
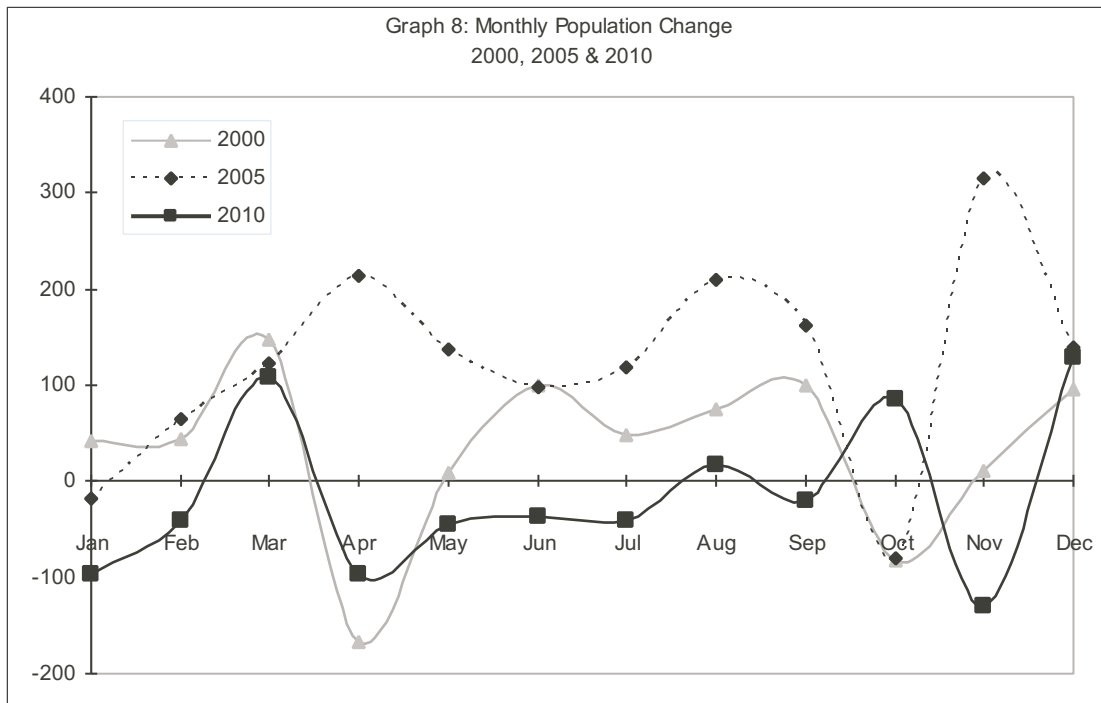


Table 16: Month-End Population 2000 through December 2010

Month	2000	2001	2002	2003	2004	2005	2006	2007	2008	2009	2010
January	36,426	36,799	38,195	40,394	40,836	40,948	42,544	44,625	46,019	49,215	51,390
February	36,471	36,760	38,397	40,556	40,809	41,012	42,565	44,753	45,944	49,345	51,349
March	36,613	36,961	38,660	40,606	40,873	41,134	42,812	45,177	45,981	49,666	51,457
April	36,452	36,829	38,734	40,662	40,901	41,347	42,773	45,201	46,198	50,161	51,361
May	36,462	37,020	39,074	40,744	40,822	41,484	42,909	45,505	46,241	50,310	51,317
June	36,563	37,081	39,136	40,437	40,697	41,582	43,206	45,484	46,369	50,622	51,281
July	36,611	37,166	39,283	40,639	40,627	41,700	43,244	45,625	46,492	50,945	51,240
August	36,686	37,299	39,268	40,783	40,524	41,910	43,596	45,588	46,816	50,957	51,257
September	36,783	37,407	39,295	40,818	40,633	42,073	43,823	45,703	46,883	51,022	51,236
October	36,703	37,500	39,571	40,859	40,726	41,992	43,878	45,935	47,942	51,334	51,322
November	36,714	37,754	39,776	40,777	40,674	42,307	43,887	45,922	48,691	51,403	51,193
December	36,802	38,067	40,172	40,850	41,000	42,486	44,450	46,028	49,307	51,487	51,321



Population

Table 17: Inmate Population by Facility, Race, Gender, and Age on December 31, 2009

Facility	Race				Gender		Age			Total
	White	Black	Hispanic	Other	Male	Female	Under 25	25 - 39	40 and Over	
Albion	1,045	1,133	217	17	2,412	0	219	1,238	955	2,412
Cambridge Springs	629	325	62	9	0	1,025	75	500	450	1,025
Camp Hill	1,562	1,687	511	18	3,778	0	855	1,784	1,139	3,778
Chester	480	604	233	6	1,323	0	184	693	446	1,323
Coal Township	809	1,055	220	13	2,097	0	411	986	700	2,097
Cresson	794	659	174	7	1,634	0	160	738	736	1,634
Dallas	751	1,219	230	8	2,208	0	197	992	1,019	2,208
Fayette	622	1,214	227	18	2,081	0	251	1,047	783	2,081
Forest	657	1,311	315	15	2,298	0	509	1,221	568	2,298
Frackville	421	568	165	12	1,166	0	98	618	450	1,166
Graterford	1,049	2,172	402	29	3,652	0	332	1,657	1,663	3,652
Greene	590	1,111	212	13	1,926	0	167	1,006	753	1,926
Greensburg	402	514	98	7	1,021	0	111	561	349	1,021
Houtzdale	875	1,219	270	14	2,378	0	630	965	783	2,378
Huntingdon	632	1,309	242	17	2,200	0	139	1,095	966	2,200
Laurel Highlands	727	512	135	11	1,385	0	119	479	787	1,385
Mahanoy	733	1,317	309	17	2,376	0	263	1,221	892	2,376
Mercer	931	593	134	15	1,673	0	137	656	880	1,673
Muncy	807	551	118	28	0	1,504	205	680	619	1,504
Pine Grove	244	654	97	7	1,002	0	693	205	104	1,002
Pittsburgh	746	809	134	5	1,694	0	195	902	597	1,694
Quehanna Bootcamp	193	179	69	0	386	55	145	237	59	441
Retreat	430	591	132	5	1,158	0	200	569	389	1,158
Rockview	973	1,040	234	11	2,258	0	212	1,084	962	2,258
Smithfield	353	760	127	7	1,247	0	126	704	417	1,247
Somerset	814	1,268	278	18	2,378	0	389	1,219	770	2,378
Waymart	963	416	130	10	1,519	0	66	472	981	1,519
C C Cs	352	171	79	1	534	69	64	314	225	603
Group Homes	377	425	117	1	742	178	93	507	320	920
Federal	3	7	0	0	10	0	0	2	8	10
County Jail	43	61	16	0	120	0	25	67	28	120
% of Total	38.8%	49.4%	11.1%	0.7%	94.5%	5.5%	14.1%	47.4%	38.5%	100.0%
Total	20,007	25,454	5,687	339	48,656	2,831	7,270	24,419	19,798	51,487

* Community Corrections Centers

Table 18: Inmate Population by Facility, Race, Gender, and Age on December 31, 2010

Facility	Race				Gender		Age			Total
	White	Black	Hispanic	Other	Male	Female	Under 25	25 - 39	40 and Over	
Albion	1,007	1,087	207	11	2,312	0	193	1,150	969	2,312
Cambridge Springs	581	272	69	10	0	932	68	439	425	932
Camp Hill	1,421	1,362	414	12	3,209	0	687	1,502	1,020	3,209
Chester	434	546	283	4	1,267	0	164	660	443	1,267
Coal Township	772	1,063	217	9	2,061	0	453	922	686	2,061
Cresson	765	587	166	9	1,527	0	143	680	704	1,527
Dallas	784	1,114	242	10	2,150	0	203	948	999	2,150
Fayette	424	576	142	12	1,154	0	110	599	445	1,154
Forest	666	1,292	316	15	2,289	0	493	1,181	615	2,289
Frackville	707	1,144	196	18	2,065	0	232	1,022	811	2,065
Graterford	776	1,780	309	23	2,888	0	213	1,283	1,392	2,888
Greene	399	451	77	4	931	0	108	490	333	931
Greensburg	589	976	210	14	1,789	0	160	915	714	1,789
Houtzdale	841	1,208	234	14	2,297	0	579	970	748	2,297
Huntingdon	643	1,279	221	15	2,158	0	180	1,087	891	2,158
Laurel Highlands	621	451	122	8	1,202	0	92	386	724	1,202
Mahanoy	827	1,250	273	17	2,367	0	253	1,187	927	2,367
Mercer	817	552	119	9	1,497	0	132	614	751	1,497
Michigan	325	686	152	8	1,171	0	80	557	534	1,171
Muncy	794	512	109	30	0	1,445	200	675	570	1,445
Pine Grove	801	730	122	5	1,658	0	202	857	599	1,658
Pittsburgh	201	549	73	6	829	0	542	186	101	829
Quehanna Bootcamp	249	106	38	3	281	115	134	196	66	396
Retreat	431	570	132	6	1,139	0	183	518	438	1,139
Rockview	866	1,018	219	9	2,112	0	236	940	936	2,112
Smithfield	444	762	154	13	1,373	0	174	753	446	1,373
Somerset	767	1,228	251	20	2,266	0	384	1,121	761	2,266
Virginia	285	622	97	5	1,009	0	110	456	443	1,009
Waymart	811	378	139	5	1,333	0	72	420	841	1,333
C C Cs	416	310	132	2	792	68	96	464	300	860
Group Homes	348	556	108	3	858	157	113	572	330	1,015
Federal	5	7	0	1	13	0	0	5	8	13
County Jail	188	333	78	8	607	0	131	307	169	607
% of Total	39.0%	49.4%	11.0%	0.7%	94.7%	5.3%	13.9%	46.9%	39.2%	100.0%
Total	20,005	25,357	5,621	338	48,603	2,718	7,120	24,062	20,139	51,321

* Community Corrections Centers

Table 19: Uniform Crime Report Offense Groupings by Inmate Race and Gender as of December 31, 2010

Part I Offenses	Race						Gender		Total	
	White	Black	Hispanic	Asian	Indian	Other	Male	Female	Number	Percent
Murder										
1st Degree	913	2,095	273	23	11	10	3,192	133	3,325	6.5%
2nd Degree	241	772	97	10	2	1	1,086	37	1,123	2.2%
3rd Degree	524	1,255	252	11	1	11	1,890	164	2,054	4.0%
Unspecified	272	616	103	8	0	1	984	16	1,000	1.9%
Voluntary Manslaughter	44	110	22	0	0	4	167	13	180	0.4%
Involuntary Manslaughter	28	16	7	0	0	0	41	10	51	0.1%
Homicide by Motor Vehicle	202	35	11	2	0	0	209	41	250	0.5%
Forcible Rape	1,618	1,289	252	3	7	7	3,149	27	3,176	6.2%
Robbery	1,309	2,911	437	6	0	15	4,525	153	4,678	9.1%
Aggravated Assault	1,187	2,298	434	10	6	20	3,744	211	3,955	7.7%
Burglary	1,371	714	158	6	3	5	2,186	71	2,257	4.4%
Theft (Including Motor Vehicle)	1,253	447	109	2	5	4	1,499	321	1,820	3.5%
Arson	176	50	13	0	0	1	222	18	240	0.5%
Total Part I Offenses	9,138	12,608	2,168	81	35	79	22,894	1,215	24,109	47.0%
Part II Offenses	Race						Gender		Total	
	White	Black	Hispanic	Asian	Indian	Other	Male	Female	Number	Percent
Other Assaults	171	105	28	0	1	1	287	19	306	0.6%
Fraud	86	33	2	0	0	1	94	28	122	0.2%
Receiving Stolen Property	188	136	26	0	0	1	340	11	351	0.7%
Forgery	193	62	8	0	1		191	73	264	0.5%
Statutory Rape	674	140	91	1	0	7	890	23	913	1.8%
Other Sex Offenses	1,741	568	204	6	4	4	2,472	55	2,527	4.9%
Narcotic Drug Laws	2,053	5,228	1,792	11	2	35	8,482	639	9,121	17.8%
Weapons	382	1,431	197	2	1	8	1,995	26	2,021	3.9%
DUI	1,054	99	65	3	3	6	1,140	90	1,230	2.4%
Prison Breach	132	88	26	0	0	1	228	19	247	0.5%
Kidnapping	82	116	28	0	0	1	218	9	227	0.4%
Other Part II Offenses	1,489	937	264	3	0	12	2,520	185	2,705	5.3%
Total Part II Offenses	8,245	8,943	2,731	26	12	77	18,857	1,177	20,034	39.0%
Parole Violators	2,473	3,761	705	19	5	4	6,678	289	6,967	13.6%
Detentioners/Other	151	44	16	0	0	0	174	37	211	0.4%
Total DOC	20,007	25,356	5,620	126	52	160	48,603	2,718	51,321	100.0%

Note: Totals based on percentages may be off due to rounding.

Population

Table 20: Status of Inmates on December 31, Calendar Years 2000 through 2010

Status	2000	2001	2002	2003	2004	2005	2006	2007	2008	2009	2010
Sentenced	30,683	31,232	32,865	33,613	33,906	34,804	36,946	38,935	41,773	43,706	44,143
Parole Violators	6,118	6,834	7,287	7,235	7,036	7,594	7,420	6,928	7,307	7,667	6,967
Detentioners	0	0	3	0	48	88	84	165	227	114	211
Unknown	1	1	17	2	10	0	0	0	0	0	0
Total	36,802	38,067	40,172	40,850	41,000	42,486	44,450	46,028	49,307	51,487	51,321
Percent Distribution	2000	2001	2002	2003	2004	2005	2006	2007	2008	2009	2010
Sentenced	83.4%	82.0%	81.8%	82.3%	82.7%	78.3%	83.1%	84.6%	81.4%	84.9%	86.0%
Parole Violators	16.6%	18.0%	18.1%	17.7%	17.2%	17.1%	16.7%	15.1%	14.2%	14.9%	13.6%
Detentioners	0.0%	0.0%	0.0%	0.0%	0.1%	0.2%	0.2%	0.4%	0.4%	0.2%	0.4%
Unknown	0.0%	0.0%	0.0%	0.0%	0.0%	0.0%	0.0%	0.0%	0.0%	0.0%	0.0%
Total	100.0%	100.0%	100.0%	100.0%	100.0%	100.0%	100.0%	100.0%	100.0%	100.0%	100.0%

Note: Totals may not equal 100% due to rounding.

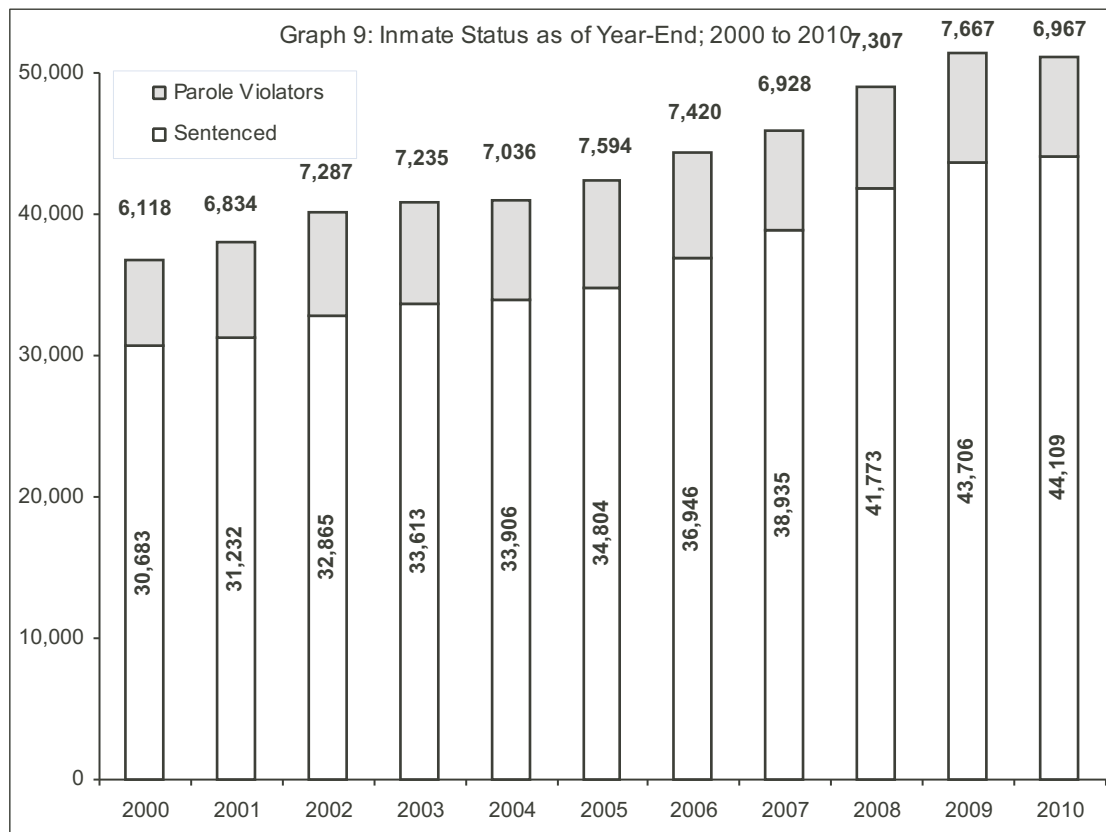


Table 21: Inmates by Primary Offense on December 31; Calendar Years 2010 and 2009 with 2010 Average Sentence Length

Part I Offenses	2010		December 31, 2010		December 31, 2009	
	*Average Minimum (Years)	* Average Maximum (Years)	Number	% of Total	Number	% of Total
Murder						
1st Degree	Life or Death	Life or Death	3,325	6.5%	3,229	6.3%
2nd Degree	Life	Life	1,123	2.2%	1,093	2.1%
3rd Degree	17.3	36.2	2,054	4.0%	1,963	3.8%
Unspecified	17.7	37.2	1,000	1.9%	1,055	2.0%
Voluntary Manslaughter	8.6	18.4	180	0.4%	189	0.4%
Involuntary Manslaughter	4.1	9.1	51	0.1%	59	0.1%
Homicide by Motor Vehicle	4.6	10.5	250	0.5%	245	0.5%
Forcible Rape	13.3	30.2	3,176	6.2%	3,255	6.3%
Robbery	7.7	17.0	4,678	9.1%	4,787	9.3%
Aggravated Assault	7.4	16.4	3,955	7.7%	3,765	7.3%
Burglary	4.8	11.4	2,257	4.4%	2,159	4.2%
Theft (Including Motor Vehicle)	2.0	5.3	1,820	3.5%	1,744	3.4%
Arson	6.5	15.7	240	0.5%	232	0.5%
Total Part I Offenses	8.9	19.2	24,109	47.0%	23,775	46.2%
Part II Offenses	2010		December 31, 2010		December 31, 2009	
	*Average Minimum (Years)	* Average Maximum (Years)	Number	% of Total	Number	% of Total
Other Assaults	2.2	5.2	306	0.6%	329	0.6%
Fraud	1.8	5.5	122	0.2%	115	0.2%
Stolen Property	2.6	6.2	351	0.7%	341	0.7%
Forgery	2.6	7.0	264	0.5%	305	0.6%
Statutory Rape	11.0	25.0	913	1.8%	785	1.5%
Other Sex Offenses	4.4	10.6	2,527	4.9%	2,353	4.6%
Narcotic Drug Offenses	3.3	7.6	9,121	17.8%	9,299	18.1%
Weapons	3.5	7.6	2,021	3.9%	1,743	3.4%
DUI	1.5	4.2	1,230	2.4%	1,426	2.8%
Prison Breach	1.9	4.9	247	0.5%	281	0.5%
Kidnapping	14.7	31.7	227	0.4%	231	0.4%
Other Part II Offenses	5.6	12.7	2,705	5.3%	2,723	5.3%
Total Part II Offenses	4.1	9.4	20,034	39.1%	19,931	38.7%
Total Part I and II Offenses	6.4	14.3	44,143	86.0%	43,706	84.9%
Parole Violators	4.1	11.0	6,967	13.6%	7,667	14.9%
Detentioners/Other			211	0.4%	114	0.2%
Total DOC			51,321	100.0%	51,487	100.0%

* Average sentence length excludes lifers.

Note: Totals based on percentages may be off due to rounding.

Table 22: Demographic Profile of Inmates on December 31; Calendar Years 2009 and 2010

Item	December 31, 2009		December 31, 2010	
	Number	Percent	Number	Percent
Age				
Under 18	57	0.1%	51	0.1%
18-20	1,260	2.4%	1,252	2.4%
21-24	5,953	11.6%	5,817	11.3%
25-29	9,133	17.7%	8,926	17.4%
30-34	8,405	16.3%	8,580	16.7%
35-39	6,881	13.4%	6,556	12.8%
40-44	6,196	12.0%	6,073	11.8%
45-49	5,653	11.0%	5,604	10.9%
50-54	3,866	7.5%	4,036	7.9%
55-59	2,112	4.1%	2,295	4.5%
60-64	1,141	2.2%	1,219	2.4%
65 and Over	830	1.6%	912	1.8%
Average	37		37	
Race				
Black	25,454	49.4%	25,357	49.4%
White	20,007	38.9%	20,005	39.0%
Hispanic	5,687	11.0%	5,621	11.0%
Other	339	0.7%	338	0.6%
Gender				
Male	48,656	94.5%	48,603	94.7%
Female	2,831	5.5%	2,718	5.3%
Marital Status				
Single	37,967	73.7%	37,835	73.7%
Married	7,355	14.3%	7,440	14.5%
Divorced	3,766	7.3%	3,684	7.2%
Separated	1,526	3.0%	1,492	2.9%
Widowed	532	1.0%	519	1.0%
Unknown	341	0.7%	351	0.7%
Birthplace				
PA	36,856	71.6%	36,676	71.40%
USA Not PA	13,018	25.3%	12,982	25.30%
Foreign Born	1,224	2.4%	1,261	2.40%
Religion				
Protestant	16,086	31.2%	15,537	30.3%
Catholic	8,514	16.5%	8,221	16.0%
Moslem	9,819	19.1%	9,991	19.5%
Jewish	278	0.5%	361	0.6%
Other	8,245	16.0%	8,863	17.3%
No preference	8,545	16.6%	8,348	16.3%
Total	51,487	100.0%	51,321	100.0%

Note: Totals may not equal 100% due to rounding.

Table 23: Long-Term Inmates on December 31, Calendar Years 2009 and 2010

Minimum Sentence	December 31st		Change from 2009 to 2010	
	2009	2010	Number	Percent
Over 10 to 20 Years	4,535	4,670	135	3.0%
Over 20 Years	1,768	1,908	140	7.9%
Lifers	4,706	4,829	123	2.6%
Capital Cases *	220	216	-4	-1.8%
Total	11,229	11,623	394	3.5%
Percent of Total Population	21.8%	22.6%	-	-

*Reduction is due to deaths by natural causes

Table 24: Number of Inmates by Facility Serving a Life Sentence on December 31; Calendar Years 2009 and 2010

Institution	2009		2010		Percent Change 2009 - 2010
	Number	Percent	Number	Percent	
Albion	210	4.5%	195	4.0%	-7.1%
Camp Hill	74	1.6%	71	1.5%	-4.1%
Cambridge Springs	23	0.5%	29	0.6%	26.1%
Chester	27	0.6%	26	0.5%	-3.7%
Coal Township	164	3.5%	177	3.7%	7.9%
Cresson	70	1.5%	69	1.4%	-1.4%
Dallas	435	9.2%	393	8.1%	-9.7%
Frackville	134	2.8%	132	2.7%	-1.5%
Forest	176	3.7%	167	3.5%	-5.1%
Fayette	317	6.7%	290	6.0%	-8.5%
Graterford	733	15.6%	690	14.3%	-5.9%
Greensburg	42	0.9%	37	0.8%	-11.9%
Greene	377	8.0%	319	6.6%	-15.4%
Houtzdale	181	3.8%	148	3.1%	-18.2%
Huntingdon	448	9.5%	388	8.0%	-13.4%
Laurel Highlands	63	1.3%	77	1.6%	22.2%
Mahanoy	288	6.1%	300	6.2%	4.2%
Mercer	3	0.1%	2	0.0%	-33.3%
Michigan	0	0.0%	317	6.6%	0.0%
Muncy	150	3.2%	149	3.1%	-0.7%
Pittsburgh	56	1.2%	42	0.9%	-25.0%
Pine Grove	24	0.5%	18	0.4%	-25.0%
Retreat	65	1.4%	61	1.3%	-6.2%
Rockview	224	4.8%	228	4.7%	1.8%
Smithfield	167	3.5%	158	3.3%	-5.4%
Somerset	239	5.1%	217	4.5%	-9.2%
Virginia	0	0.0%	113	2.3%	0.0%
Waymart	13	0.3%	13	0.3%	0.0%
Lewisburg (Federal)	3	0.1%	3	0.1%	0.0%
Total	4,706	100.0%	4,829	100.0%	2.6%

Note: Totals may not equal 100% due to rounding.

Table 25: Ten Highest Counties with Inmates Serving a Life Sentence Calendar Years 2009 and 2010

County	December 31, 2009		December 31, 2010	
	Number	% of Total	Number	% of Total
Philadelphia	2,446	52.0%	2,508	51.9%
Allegheny	483	10.3%	501	10.4%
Delaware	169	3.6%	169	3.5%
Dauphin	143	3.0%	147	3.0%
Montgomery	105	2.2%	109	2.3%
Lancaster	100	2.1%	103	2.1%
Berks	102	2.2%	102	2.1%
Bucks	98	2.1%	100	2.1%
York	86	1.8%	90	1.9%
Lehigh	74	1.6%	76	1.6%
Chester	69	1.5%	71	1.5%
Erie	70	1.5%	71	1.5%
Other Counties	761	16.2%	782	16.2%
Total	4,706	100.0%	4,829	100.0%

Note: Totals may not equal 100% due to rounding.

Table 26: Age of Inmates Serving a Life Sentence on December 31; Calendar Years 2009 and 2010

Age	December 31, 2009			December 31, 2010		
	Number	% of Total	Cumulative %	Number	% of Total	Cumulative %
Under 20	13	0.3%	0.3%	12	0.2%	0.2%
20 to 24	179	3.8%	4.1%	181	3.7%	4.0%
25 to 29	389	8.3%	12.3%	378	7.8%	11.8%
30 to 34	644	13.7%	26.0%	639	13.2%	25.1%
35 to 39	613	13.0%	39.1%	646	13.4%	38.4%
40 to 44	598	12.7%	51.8%	604	12.5%	50.9%
45 to 49	657	14.0%	65.7%	621	12.9%	63.8%
50 to 54	602	12.8%	78.5%	648	13.4%	77.2%
55 to 59	463	9.8%	88.4%	478	9.9%	87.1%
60 to 64	290	6.2%	94.5%	329	6.8%	93.9%
65 and Over	258	5.5%	100.0%	293	6.1%	100.0%
Total	4,706	100.0%		4,829	100.0%	
Average Age	44.1			44.6		

**Table 27 : Time Served by Inmates Serving Life as of December 31;
Calendar Years 2009 and 2010**

Time Served	2009		2010	
	Number	% of Total	Number	% of Total
Under 5 Years	538	11.4%	520	10.8%
5 to 9.9 Years	707	15.0%	734	15.2%
10 to 14.9 Years	801	17.0%	778	16.1%
15 to 19.9 Years	875	18.6%	854	17.7%
20 to 24.9 Years	604	12.8%	670	13.9%
25 to 29.9 Years	562	11.9%	551	11.4%
30 to 34.9 Years	349	7.4%	389	8.1%
35 to 39.9 Years	198	4.2%	227	4.7%
40 Years and over	72	1.5%	106	2.2%
Total	4,706	100.0%	4,829	100.0%
Average(Years)	17.6		18.1	

Note: Totals may not equal 100% due to rounding.

**Table 28: Profile of Inmates Under Death Sentence on December 31;
Calendar Years 2009 and 2010**

Category	December 31, 2009		December 31, 2010	
	Number	% of Total	Number	% of Total
County				
Philadelphia	106	48.2%	105	47.7%
Berks	12	5.5%	12	5.5%
Allegheny	9	4.1%	9	4.1%
York	8	3.6%	8	3.6%
Bucks	6	2.7%	6	2.7%
Lehigh	7	3.2%	6	2.7%
Montgomery	6	2.7%	6	2.7%
Lancaster	5	2.3%	5	2.3%
Cumberland	5	2.3%	4	1.8%
Fayette	4	1.8%	4	1.8%
Washington	4	1.8%	4	1.8%
Dauphin	4	1.8%	3*	1.4%
Other Counties*	44	20.0%	44	20.0%
Age				
18 - 24	2	0.9%	2	0.9%
25 - 29	11	5.0%	11	5.0%
30 - 34	26	11.8%	22	10.0%
35 - 39	26	11.8%	22	10.0%
40 - 44	37	16.8%	38	17.3%
45 - 49	45	20.5%	44	20.0%
50 - 54	35	15.9%	33	15.0%
55 and Over	38	17.3%	44	20.0%
Average	45		45.8	
Race				
White	71	32.3%	69	31.4%
Black	129	58.6%	127	57.7%
Hispanic	18	8.2%	18	8.2%
Other	2	0.9%	2	0.9%
Gender				
Male	216	98.2%	213	98.6%
Female	4	1.8%	3	1.4%
Total	220	100.0%	216	100.0%

*Blair, Bradford, Chester, Lebanon, Luzerne, and Northumberland each had 3 inmates with death sentences.

Note: Totals may not equal 100% due to rounding.

Commonwealth of Pennsylvania
Department of Corrections



2010
Annual Statistical Report

Section III

Releases



Releases

Overall, the average time served for inmates released in 2010 serving both Part One and Part Two Offenses was 48.5 months.

The average time served for Part One Offenders released in 2010 was 68.8 months and the average time served for Part Two Offenders was 36.8 months.

The number of inmates initially released serving a sentence of two or more years hit an all-time high of 11,511 in 2010.

Table 29: Average Time Served by Offense for Inmates Released During 2010

Part I Offenses	12/31/10 Number	Average Time Served (Months)	Average Time Served (Years)	% of Total
Murder				
1st Degree	26	247.9	20.6	0.1%
2nd Degree	9	336.6	28.0	0.0%
3rd Degree	134	161.9	13.5	0.7%
Unspecified	56	154.0	12.8	0.3%
Voluntary Manslaughter	40	100.3	8.3	0.2%
Involuntary Manslaughter	31	46.1	3.8	0.2%
Homicide by Motor Vehicle	71	51.7	4.3	0.4%
Forcible Rape	275	163.7	13.6	1.5%
Robbery	1,315	73.5	6.1	7.1%
Aggravated Assault	930	70.6	5.9	5.0%
Burglary	832	49.8	4.1	4.5%
Theft (Including Motor Vehicle)	1,062	30.1	2.5	5.8%
Arson	55	53.4	4.4	0.3%
Total Part I Offenses	4,836	68.8	5.7	26.3%
Part II Offenses	12/31/10 Number	Average Time Served (Months)	Average Time Served (Years)	% of Total
Other Assaults	191	26.0	2.2	1.0%
Fraud	76	27.1	2.3	0.4%
Stolen Property	190	37.1	3.1	1.0%
Forgery	197	31.3	2.6	1.1%
Statutory Rape	32	67.7	5.6	0.2%
Other Sex Offenses	455	55.7	4.6	2.5%
Narcotic Drug Offenses	4,284	36.8	3.1	23.3%
Weapons	581	37.1	3.1	3.2%
DUI	951	23.2	1.9	5.2%
Prison Breach	193	38.0	3.2	1.0%
Kidnapping	32	131.6	11.0	0.2%
Other Part II Offenses	1,186	39.8	3.3	6.4%
Total Part II Offenses	8,368	36.8	3.1	45.4%
Total Part I and II Offenses	13,204	48.5	4.0	71.7%
Parole Violators	3,510			19.1%
Other	1,703			9.2%
Total DOC	18,417			100.0%
Notes:				
1) Calculation of average time served does not include non-recommit actions or reparoles.				
2) Totals may not equal 100% due to rounding.				
3) In 2010, three of the 1st & 2nd degree murder releases were paroled and two maxed out. The remaining releases include inmate deaths and vacated sentences.				

Table 30: Inmate Releases by Type for Calendar Years 2009 and 2010

Type of Release	2009		2010	
	Number	Percent	Number	Percent
Unconditional				
Maxed Out*	3,860	23.2%	4,134	22.4%
By Court Order	81	0.5%	76	0.4%
Total	3,941	23.7%	4,210	22.8%
Conditional				
State Parole	7,996	48.0%	9,007	48.9%
County Parole	37	0.2%	45	0.2%
Reparoled (State)	2,670	16.0%	3,514	19.1%
Total	9,775	64.2%	12,566	68.2%
Other Releases				
Deaths	166	1.0%	143	0.9%
Other**	1,841	11.1%	1,498	8.1%
Total	2,935	12.1%	1,641	9.0%
Total Releases	16,651	100.0%	18,417	100.0%

* Expiration of maximum sentence.

** Other includes transfers to state hospitals and other jurisdictions, and released detentioners.

Graph 10: Distribution by Release Type; 2009 and 2010

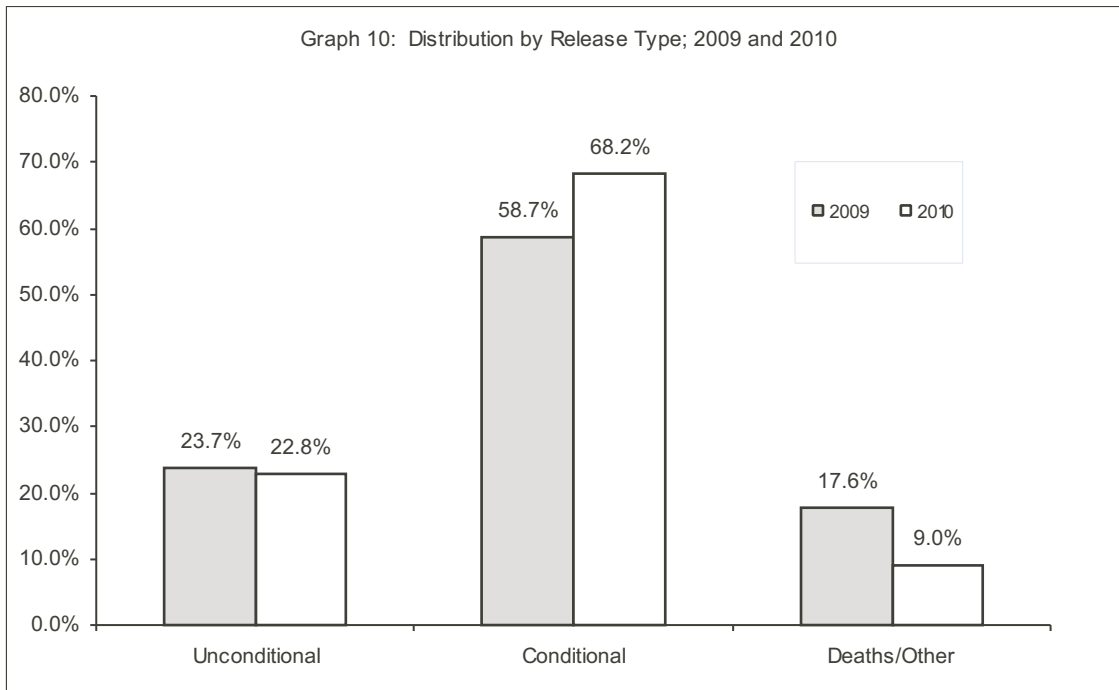


Table 31: Average Months Served by Inmates Initially Released in Calendar Years 2000 through 2010

Year Released	Maximum Sentence Under 2 Years		Maximum Sentence 2 Years and Over		All Sentences	
	Number Released	Average Time Served (Months)	Number Released	Average Time Served (Months)	Number Released	Average Time Served (Months)
2000	35	13.1	7,073	50.3	7,108	50.1
2001	28	9.8	6,841	48.6	6,869	48.4
2002	29	13.8	6,809	48.8	6,838	48.4
2003	30	12.8	7,962	47.3	7,992	47.3
2004	30	13.7	9,046	43.2	9,076	43.1
2005	13	14.7	8,748	42.8	8,761	42.7
2006	18	16.8	8,507	43.4	8,525	43.4
2007	49	9.5	10,617	42.4	10,666	42.3
2008	20	10.5	9,159	44.6	9,179	44.6
2009	23	14.4	10,153	41.6	10,176	41.5
2010	20	14.8	11,511	43.5	11,531	43.4

Note: Initial releases includes first time parolees, deaths, some maxout cases, vacated sentences, and vacated convictions. Initial releases does not include parole violators and some max out cases.

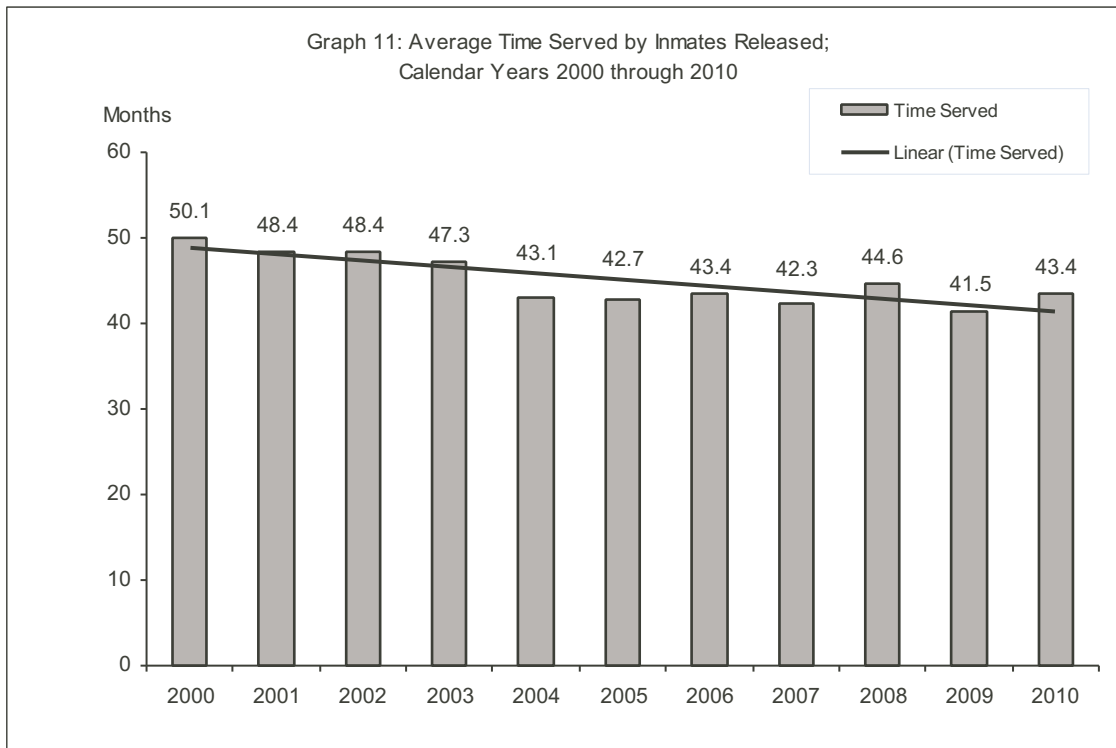


Table 32: Releases by Type for Inmates Serving a Life Sentence; Calendar Years 2000 through 2010

Year Released	Commuted/Other*	Died	Total
2000	0	36	36
2001	0	13	13
2002	0	31	31
2003	0	33	33
2004	2	35	37
2005	2	41	43
2006	5	15	20
2007	3	29	32
2008	1	29	30
2009	1	27	28
2010	0	32	32
Total	14	321	335

* Refers to commuted lifers or those whose Life Sentence was vacated and who were released from the PA DOC.



Section IV

Miscellaneous



Miscellaneous

There were no breach escapes from an institution in 2010. There have only been two walk aways from outside the institutions since 1998 and both of them were quickly apprehended.

There were 164 walk aways from community correction centers in 2010.

The Department of Corrections' overall personnel complement consisted of 9,237 security staff and 5,594 other staff positions in 2010.

Table 33: Number of Breach Escapes from 2000 through 2010 by Facility

Institution/Facility	2000	2001	2002	2003	2004	2005	2006	2007	2008	2009	2010
Albion	0	0	0	0	0	0	0	1	0	0	0
Camp Hill	0	0	0	0	0	0	0	0	0	0	0
Cambridge Springs	0	0	0	0	0	0	0	0	0	0	0
Chester	0	0	0	0	0	0	0	0	0	0	0
Coal Township	0	0	0	0	0	0	0	0	0	0	0
Cresson	0	0	0	0	0	0	0	0	0	0	0
Dallas	0	0	0	0	0	0	0	0	0	0	0
Frackville	0	0	0	0	0	0	0	0	0	0	0
Forest	0	0	0	0	0	0	0	0	0	0	0
Fayette	-	-	-	0	0	0	0	0	0	0	0
Graterford	0	0	0	0	0	0	0	0	0	0	0
Greensburg	0	0	0	0	0	0	0	0	0	0	0
Greene	0	0	0	0	0	0	0	0	0	0	0
Houtzdale	0	0	0	0	0	0	0	0	0	0	0
Huntingdon	0	0	0	0	0	0	0	0	0	0	0
Laurel Highlands	0	0	0	0	0	0	0	0	0	0	0
Mahanoy	0	0	0	0	0	0	0	0	0	0	0
Mercer	0	0	0	0	0	0	0	0	0	0	0
Muncy	0	0	0	0	0	0	0	0	0	0	0
Pittsburgh	0	0	0	0	0	0	0	0	0	0	0
Pine Grove	0	0	0	0	0	0	0	0	0	0	0
Quehanna	0	0	0	0	0	0	0	0	0	0	0
Retreat	0	0	0	0	0	0	0	0	0	0	0
Rockview	0	0	0	0	0	0	0	0	0	0	0
Smithfield	0	0	0	0	0	0	0	0	0	0	0
Somerset	0	0	0	0	0	0	0	0	0	0	0
Waymart	0	0	0	0	0	0	0	0	0	0	0
Total	0	0	0	0	0	0	0	1	0	0	0

Table 34: Number of Walk Aways from 2000 through 2010 by Facility

Institution/Facility	2000	2001	2002	2003	2004	2005	2006	2007	2008	2009	2010
Albion	0	0	0	0	0	0	0	0	0	0	0
Camp Hill	0	0	0	0	0	0	0	0	0	0	0
Cambridge Springs	0	0	0	0	0	0	0	0	0	0	0
Chester	0	0	0	0	0	0	0	0	0	0	0
Coal Township	0	0	0	0	0	0	0	0	0	0	0
Cresson	0	0	0	0	0	0	0	0	0	0	0
Dallas	0	0	0	0	0	0	0	0	0	0	0
Frackville	0	0	0	0	0	0	0	0	0	0	0
Forest	0	0	0	0	0	0	0	0	0	0	0
Fayette	-	-	-	0	0	0	0	0	0	0	0
Graterford	0	0	0	0	0	0	0	0	0	0	0
Greensburg	0	0	0	0	0	0	0	0	0	0	0
Greene	0	0	0	0	0	0	0	0	0	0	0
Houtzdale	0	0	0	0	0	0	0	0	0	0	0
Huntingdon	0	0	0	0	0	1	1	0	0	0	0
Laurel Highlands	0	0	0	0	0	0	0	0	0	0	0
Mahanoy	0	0	0	0	0	0	0	0	0	0	0
Mercer	0	0	0	0	0	0	0	0	0	0	0
Muncy	0	0	0	0	0	0	0	0	0	0	0
Pittsburgh	0	0	0	0	0	0	0	0	0	0	0
Pine Grove	0	0	0	0	0	0	0	0	0	0	0
Quehanna	0	0	0	0	0	0	0	0	0	0	0
Retreat	0	0	0	0	0	0	0	0	0	0	0
Rockview	0	0	0	0	0	0	0	0	0	0	0
Smithfield	0	0	0	0	0	0	0	0	0	0	0
Somerset	0	0	0	0	0	0	0	0	0	0	0
Waymart	0	0	0	0	0	0	0	0	0	0	0
Sub-Total	0	0	0	0	0	1	1	0	0	0	0
CCCs	73	161	126	126	109	86	156	276	168	94	164
Total	73	161	126	126	109	87	157	276	168	94	164

Note - beginning in 2006, there was an increase in pre-release inmates.

Table 35: Complement Control by Location as of December 31, 2010

Org Name	Other Staff		Other Staff Total	Security Staff		Security Staff Total	Grand Total
	Female	Male		Female	Male		
Albion	106	120	226	18	295	313	539
Cambridge Springs	91	48	139	84	89	173	312
Camp Hill	171	201	372	68	511	579	951
Chester	65	77	142	80	159	239	381
Coal Township	95	120	215	21	280	301	516
Cresson	79	112	191	14	298	312	503
Dallas	88	147	235	19	431	450	685
Frackville	59	82	141	12	269	281	422
Forest	120	109	229	25	371	396	625
Fayette	109	122	231	19	406	425	656
Graterford	167	191	358	162	595	757	1,115
Greensburg	59	78	137	13	224	237	374
Greene	100	129	229	27	449	476	705
Houtzdale	108	124	232	13	314	327	559
Huntingdon	102	122	224	14	400	414	638
Laurel Highlands	134	115	249	21	244	265	514
Mahanoy	105	113	218	21	303	324	542
Mercer	67	102	169	21	237	258	427
Muncy	124	91	215	139	168	307	522
Pittsburgh	85	105	190	23	310	333	523
Pine Grove	63	86	149	7	226	233	382
Quehanna	38	43	81	13	104	117	198
Retreat	67	81	148	13	219	232	380
Rockview	86	148	234	20	393	413	647
Smithfield	72	91	163	14	320	334	497
Somerset	94	119	213	10	317	327	540
Waymart	129	135	264	22	392	414	678
Grand Total	2,583	3,011	5,594	913	8,324	9,237	14,831



Section VI

Glossary

Capacity: “Operational Bed Capacity” represents the optimal number of inmates that each facility can house based on a number of factors. In addition to cell size and security level, “Operational Bed Capacity” takes into consideration availability of inmate employment or programming, support services, and facility infrastructure.

Capital cases: Inmate found guilty of first degree murder and sentenced by a judge to death by execution.

Commutations: A change of a legal penalty or punishment to a lesser one. A commutation for an inmate serving a life sentence is the establishment of a parole date.

Conditional release: The release of an inmate from the Department of Corrections to another supervising authority. This method of release includes the following types:

State Parole: When an inmate is released to the community and is supervised by the Pennsylvania Board of Probation and Parole.

County Parole: When an inmate is released to the community and is supervised by the county probation/parole department.

Reparoled (State): When an inmate is paroled from a state correctional facility, returned to the Department of Corrections for a parole violation, serves time in the institution, and is again released to the community under supervision of the Pennsylvania Board of Probation and Parole.

County transfers: When an inmate serving a county sentence is transferred to the Department of Corrections. The reason for the transfer could be for security, medical, or mental health reasons.

Court Commitments: A commitment imposed by a court sentencing an individual to confinement in a state correctional facility.

Detentioners: An inmate who has not been sentenced to a Pennsylvania state correctional facility, but who is being housed in a Pennsylvania state correctional facility at the request of another jurisdiction such as a county, another state, or the federal government.

Escape: The intentional act of an inmate to leave the custody of the Department of Corrections. The act of escape includes the following types:

Breach escape: When an inmate, in the process of intentionally leaving the custody of the Department of Corrections, compromises the secure perimeter of the facility.

Walk away: When an inmate intentionally leaves the custody of the DOC while on an authorized release or furlough (i.e., work detail, medical treatment, educational release, etc.). A walk away, as opposed to a breach escape, does not compromise the secure perimeter of the facility as it occurs outside the secure perimeter (i.e., wall, fence, etc.).

Incarceration rate: The number of state sentenced inmates incarcerated per 100,000 Pennsylvania residents.

Lifer: An individual with a minimum and maximum sentence of natural life.

Minimum sentence: The minimum amount of time imposed by the court that an inmate must serve before being eligible for release from prison. This sentence cannot exceed one-half of the maximum sentence under the Pennsylvania statute.

Maximum sentence: The maximum amount of time spent imposed by the court that an inmate can be required to serve before being released from prison.

Non-recommit action: The release of a parolee who was returned to the department as a possible parole violator. If the return action is not adjudicated as a parole violation, the parolee is re-released to parole.

Offender: Generally refers to an individual who is convicted of an offense but who has not been received by the state prison system. This term is used in the Receptions Section of this report to denote newly admitted individuals.

Parole violators: Persons paroled from prison who violated the terms and/or conditions of their parole. Parole violators are generally classified as technical or convicted violators. Technical violators are recommitted for failure to adhere to the requirements of their parole plan (i.e., non-reporting to agent or program, non-criminal drug violations, etc.), while convicted violators are found guilty of new criminal offenses. A technical/convicted violator is committed for violating conditions of parole in addition to being charged with commission of a new criminal offense.

Part I Offenses: Offenses identified by the Uniform Crime Report which are of a serious nature and are usually reported to law enforcement agencies. Crimes identified as Part I Offenses include: criminal homicide, forcible rape, robbery, assault, burglary, larceny-theft, motor vehicle theft and arson.

Part II Offenses: Offenses not classified as Part I Offense as defined above because they are less serious crimes. Crimes identified as Part II offenses include: fraud, stolen property, forgery, narcotic drugs, and drunken driving (DUI).

Reparole: A parole release after a previous parole revocation. The initial parole and subsequent reparole occur during the same sentence.

Sentenced: Inmates who are serving time on court-imposed sentences. (Does not include inmates who are serving time because of parole violations.)

Uniform Crime Report (UCR) Offense Groupings: Offense classifications employed by Pennsylvania's criminal justice system. In order to remain compatible with the Federal Bureau of Investigation, the categories of offense classification utilized are the same as those employed at the national level. The crimes defined in this classification system are grouped as Part I or Part II offenses.

Unconditional release: The means of release for inmates who have either served their maximum sentence or have had their sentences reduced or vacated by the court (e.g., max out, executed, court order, etc.).