

2024 Products and Services
INMATE APPAREL



**PENNSYLVANIA
CORRECTIONAL INDUSTRIES**

HOME OF





YOU WEAR IT WELL

Pennsylvania Correctional Industries trains inmates in every aspect of clothing manufacturing; From weaving of raw materials to sewing of the final product. In this Inmate Apparel catalog, you will find garments for all of your apparel requirements. Each item has been designed for practicality, durability and appearance. Unusual sizes and modifications are always available. The products located in this catalog section are all approved by DOC for inmate wear. Please contact our Customer Service Department with your special clothing requirements, to receive a price quote or to place an order.

All Pennsylvania Correctional Industries customers can get assistance from a PCI Sales Representative or Customer Service Representative. These individuals provide detailed information on more than 2500 PCI products and services and can help in selecting the best solution for your business or organization, and can assist in placing orders. If you do not know your Sales Representative information, please use our Sales contact information to the right.

Prices are subject to change without notice.



Pennsylvania Correctional Industries
P.O. Box 47
Camp Hill, PA 17001

Customer Service—717.425.7292 or 1.877.ORDER.CI
Fax—717.425.7291
Mail—To Above Address
E-mail—pci@pa.gov
Web—www.cor.pa.gov/pci

INMATE APPAREL

Coats and Jackets

Twill Work Jackets.....	IA1
Winter Corduroy Coat.....	IA1
Inmate Release Jacket.....	IA1

Coveralls and Jumpsuits

DOC Coveralls & Male Transport.....	IA2
Winter-Weight Twill Coveralls (RHU).....	IA2
Summer-Weight Poplin Coveralls (RHU).....	IA2
DOC Quilt-Lined Coveralls.....	IA2
Female Transport Separates.....	IA3
Visiting Room Jumpsuits.....	IA3

Jeans

Hobby Jeans.....	IA4
Denim Jeans for Inmate Release.....	IA4

Pajamas and Gowns

Poplin Patient Pajamas.....	IA5
Poplin Patient Gowns.....	IA5
Poplin Pajama Tops and Bottoms.....	IA5

Raingear

Nylon Rain Jackets and Raincoats.....	IA6
---------------------------------------	-----

Smocks

Twill Kitchen Smock	IA6
---------------------------	-----

Work Shirts

Blue Chambray Work Shirts.....	IA7
Poplin Work Shirts.....	IA8
Twill Work Shirts.....	IA9

Shoes

Men's Leather High-Top Work Boots.....	IA10
Women's Oxford Shoes.....	IA10
Shoe Laces.....	IA11
Cushioned Sole Inserts	IA11

Socks

Terry Socks.....	IA11
Tube Socks.....	IA11
Anklet Tube Socks.....	IA11

Sweat Clothes

Fleece Sweatshirt.....	IA12
DOC Fleece Sweatshirt.....	IA12
Fleece Sweat Pants.....	IA12
Fleece Sweat Shorts.....	IA12

T-Shirts

Red DOC T-Shirts.....	IA13
Unisex Brown T-Shirt Undershirts.....	IA13

Undergarments

Women's Panties.....	IA14
Men's Underwear.....	IA14
Men's Boxer Briefs.....	IA14
Men's Long Johns.....	IA15

Accessories

Baseball Caps.....	IA16
Ski Caps.....	IA16
Scarves	IA16
Handkerchiefs	IA16
Safety Vests	IA16

Mental Health Population

Unisex Hobby Jeans.....	IA17
Twill Work Shirts.....	IA17
Patient Gowns	IA17
Two-Piece Pajamas.....	IA17

COATS & JACKETS

MALE and FEMALE TWILL WORK JACKETS

These unlined, single breasted work jackets are made out of a Cotton/Polyester Twill blend and feature a tailored collar, button down front, three pockets and DOC on the back. Approved for Inmate Wear. Available for men in Cocoa Brown and Gray. Available for women in Cocoa Brown only.



MALE SIZE	COCOA BROWN		GRAY		FEMALE SIZE	COCOA BROWN	
	MM #	PRICE	MM #	PRICE		MM #	PRICE
N/A	-	-	-	-	X-Small	315002	\$23.72
Small	312744	\$21.05	312749	\$19.07	Small	315003	\$23.72
Medium	312745	\$21.44	312750	\$19.37	Medium	315004	\$23.72
Large	312746	\$22.21	312751	\$19.90	Large	315005	\$23.72
X-Large	312747	\$22.68	312752	\$20.27	X-Large	315006	\$23.72
2X	200474	\$22.74	312753	\$20.47	2X	315007	\$24.65
3X	200473	\$22.98	312754	\$20.65	3X	315008	\$24.65
4X	312748	\$23.56	312755	\$21.09	4X	315009	\$24.65
5X	200231	\$24.29	312756	\$21.48	5X	315010	\$26.11
6X	314557	\$24.81	312757	\$21.88	6X	340038	\$28.36
7X	243149	\$25.33	312758	\$22.27	7X	340039	\$28.36
N/A	-	-	-	-	8X	340040	\$29.91

UNISEX WINTER CORDUROY COAT

This single breasted winter corduroy coat is lined with Thinsulate and features a button down front, fold down collar, two inverted side pockets and DOC on the back. Approved for Inmate Wear. Available in Gray or Cocoa Brown.



SIZE	GRAY		COCOA BROWN	
	MM #	PRICE	MM #	PRICE
Small	312432	\$42.21	312426	\$45.22
Medium	312433	\$43.50	312427	\$46.95
Large	312434	\$44.45	312428	\$47.63
X-Large	312435	\$45.16	312429	\$48.60
2X	312436	\$47.82	200508	\$51.53
3X	312437	\$48.41	200491	\$50.71
4X	312438	\$49.25	200479	\$53.25
5X	312439	\$50.10	200230	\$54.29
6X	312440	\$50.99	312430	\$55.33
7X	312441	\$51.89	312431	\$56.39

UNISEX INMATE RELEASE JACKET

Denim jacket made of Blue denim with a quilt lining. For use as Inmate Release clothing.



SIZE	MM #	PRICE
Small	312735	\$62.34
Medium	312736	\$61.59
Large	312737	\$62.65
X-Large	312738	\$63.35
2X	312739	\$65.04
3X	312740	\$65.96
4X	312741	\$66.91
5X	312742	\$70.12
6X	312743	\$71.13

COVERALLS

DOC TWILL COVERALLS

These Cotton/Polyester blend Twill coveralls feature a button closure and long sleeves with DOC printed on the back. Available in White, Light Gray, Cocoa Brown or Transportation Gold. The Transportation Gold coveralls also have the 3 letter institution initials printed on the back. All twill coveralls are approved for Inmate Wear.

WHITE			LIGHT GRAY		COCOA BROWN		TRANSPORTATION GOLD	
SIZE	MM #	PRICE	MM #	PRICE	MM #	PRICE	MM #	PRICE
Small	312641	\$43.09	312624	\$44.85	312614	\$56.28	312632	\$43.59
Medium	312642	\$43.09	312625	\$44.85	312615	\$56.28	312633	\$43.59
Large	312643	\$43.09	312626	\$44.85	312616	\$56.28	312634	\$43.59
X-Large	312644	\$43.09	312627	\$44.85	312617	\$56.28	312635	\$43.59
2X	312645	\$44.12	312628	\$39.62	312618	\$58.97	312636	\$44.71
3X	312646	\$44.12	312629	\$46.11	312619	\$58.97	312637	\$44.71
4X	312647	\$44.12	312630	\$46.11	312620	\$58.97	312638	\$44.71
5X	312648	\$46.66	312631	\$49.22	312621	\$65.52	312639	\$47.44
6X	340265	\$46.66	340246	\$49.75	312622	\$66.27	312640	\$47.76
7X	340266	\$47.25	340247	\$50.00	312623	\$67.62	340256	\$48.00
8X	340267	\$47.25	340248	\$50.00	340238	\$67.62	340257	\$48.00
9X	340268	\$48.00	340249	\$52.00	340239	\$68.50	340258	\$49.00
10X	340269	\$48.00	340250	\$52.00	340240	\$68.50	340259	\$49.00

WINTER-WEIGHT TWILL COVERALLS (RHU)

Made of Twill, these coveralls are great for winter will and feature button closures along with ¾ length sleeves. Available in Orange only with DOC printed on the back. These coveralls are approved for RHU inmates.

SIZE	MM #	PRICE
Small	312452	\$48.74
Medium	312453	\$48.74
Large	312454	\$48.74
X-Large	312455	\$48.74
2X	312456	\$62.51
3X	312457	\$62.51
4X	312458	\$62.51
5X	312459	\$70.07
6X	312460	\$70.07
7X	340229	\$71.00
8X	340230	\$71.00
9X	340231	\$72.00
10X	340232	\$72.00



SUMMER-WEIGHT POPLIN COVERALLS (RHU)

Made of Poplin, these coveralls are light-weight for summer wear and feature button closures and ¾ length sleeves. Available in Orange only with DOC printed on the back. These coveralls are approved for RHU inmates.

SIZE	MM #	PRICE
Small	312461	\$43.27
Medium	312462	\$43.27
Large	312463	\$43.27
X-Large	312464	\$43.27
2X	312465	\$44.35
3X	312466	\$44.35
4X	312467	\$44.35
5X	312468	\$46.99
6X	312469	\$47.29
7X	340201	\$47.29
8X	340202	\$48.00
9X	340203	\$48.00
10X	340438	\$48.00

DOC QUILT-LINED COVERALLS

Twill coveralls feature long sleeves, a quilted lining and zipper closure, with DOC printed on the back and no hood. Approved for Inmate Wear. Available in Gray or Cocoa Brown.

GRAY			COCOA BROWN	
SIZE	MM #	PRICE	MM #	PRICE
Small	339949	\$85.71	312649	\$88.75
Medium	312660	\$85.71	312650	\$88.75
Large	312661	\$85.71	312651	\$88.75
X-Large	312662	\$85.71	312652	\$88.75
2X	312663	\$88.23	312653	\$91.06
3X	312664	\$88.23	312654	\$91.06
4X	312665	\$88.23	312655	\$91.06
5X	312666	\$97.05	312657	\$99.69
6X	312667	\$97.05	312656	\$99.69
7X	312668	\$97.05	312658	\$99.69
8X	338274	\$97.05	338273	\$99.69

FEMALE TRANSPORT SEPARATES

Two-piece top and bottom Female transportation sets are made of a Cotton/Polyester Twill material. The pullover top features a scoop neck with long or short sleeves. The bottoms feature a full elastic waist. Transport separates are available in Transportation Gold only, with DOC and 3 letter institution letters printed on the back of the pullover top.

LONG SLEEVES			SHORT SLEEVES	
SIZE	MM #	PRICE	MM #	PRICE
Small	312820	\$43.45	312828	\$43.45
Medium	312821	\$43.47	312829	\$43.47
Large	312822	\$43.49	312830	\$43.49
X-Large	312823	\$43.52	312831	\$43.52
2X	312824	\$44.66	312832	\$44.66
3X	312825	\$44.68	312833	\$44.68
4X	312826	\$44.71	312834	\$44.71
5X	312827	\$46.80	312835	\$47.46



FEMALE RHU SEPARATES

Two-piece top and bottom Female RHU sets are made of a Cotton/Polyester Twill material. The pullover top features a scoop neck with 3/4" sleeves. The bottoms feature a full elastic waist. Available in orange only and have DOC on the back. These are approved for RHU inmates.

SIZE	MM #	PRICE
Small	348838	\$45.69
Medium	348839	\$45.72
Large	348840	\$45.74
X-Large	348841	\$45.76
2X	348842	\$48.88
3X	348843	\$48.91
4X	348844	\$48.93
5X	348845	\$56.51
6X	348848	\$60.10

SIZE	MM #	PRICE
Small	312810	\$28.28
Medium	312811	\$28.70
Large	312812	\$28.94
X-Large	312813	\$29.24
2X	312814	\$29.64
3X	312815	\$29.99
4X	312816	\$30.16
5X	312817	\$30.33
6X	312818	\$30.52
7X	312819	\$30.73
8X	339969	\$31.02
9X	339970	\$31.16
10X	339971	\$31.55
11X	339972	\$31.77
12X	339973	\$31.96
13X	341931	\$332.47
14X	341932	\$32.85
15X	341933	\$33.25
16X	341934	\$33.65
17X	341935	\$34.44

VISITING ROOM JUMPSUITS

Visiting room jumpsuits are made of 4¼-ounce, Cocoa Brown, Cotton/Polyester blend Poplin and feature short sleeves with a yellow arm band, full elastic waistband, no pockets, a finished collar, 20" brass zipper and DOC printed on the back. These jumpsuits are approved for Inmate Wear.



MALE HOBBY JEANS

These Cotton/Polyester Twill hobby jeans feature a half-elastic waist and a button fly. Hobby jeans are available in White, Navy Blue (Reception), Cocoa Brown (General Population), Royal Blue (MHU*) and Gray (Outside Service Unit). *To include SRTU, SAU, SOU, POC and MHU inmates.

SIZE	WHITE		NAVY BLUE		COCOA BROWN		ROYAL BLUE		GRAY	
	MM #	PRICE	MM #	PRICE	MM #	PRICE	MM #	PRICE	MM #	PRICE
Small	291120	\$15.60	312800	\$14.32	312791	\$20.54	340021	\$15.13	291119	\$16.44
Medium	291110	\$15.60	312801	\$14.32	312792	\$20.54	340020	\$15.13	291090	\$16.44
Large	291111	\$15.60	312802	\$14.32	312793	\$20.54	340019	\$15.13	291091	\$16.44
X-Large	291112	\$15.60	312803	\$14.32	312794	\$20.54	340022	\$15.13	291092	\$16.44
2X	291113	\$16.68	312804	\$17.47	312795	\$23.23	340011	\$15.29	291093	\$16.94
3X	291114	\$16.68	312805	\$17.47	312796	\$23.23	340012	\$15.29	291094	\$16.94
4X	291115	\$16.68	312806	\$17.47	312797	\$23.23	340013	\$15.29	291095	\$16.94
5X	291116	\$17.49	312807	\$18.46	291118	\$25.21	340014	\$15.65	291096	\$17.31
6X	291117	\$17.70	312808	\$18.60	312798	\$25.64	340015	\$15.65	340309	\$17.37
7X	338977	\$17.84	312809	\$18.75	312799	\$25.91	340016	\$15.65	340310	\$17.42
8X	338978	\$18.05	338974	\$19.13	321174	\$26.00	340017	\$15.65	340311	\$17.51
9X	338979	\$18.36	338975	\$19.50	321175	\$26.10	340018	\$15.65	340312	\$17.66
10X	338976	\$18.68	338973	\$19.87	338972	\$26.20	340010	\$15.65	340313	\$17.80

FEMALE HOBBY JEANS

These Cotton/Polyester Twill hobby jeans feature a full elastic waist. Hobby jeans are available in White, Navy Blue (Reception), and Cocoa Brown (General Population).



SIZE	WHITE		NAVY BLUE		COCOA BROWN	
	MM #	PRICE	MM #	PRICE	MM #	PRICE
Small	338314	\$13.99	338306	\$14.28	312783	\$14.84
Medium	338313	\$13.99	338305	\$14.28	312784	\$14.84
Large	338312	\$13.99	338304	\$14.28	312785	\$14.84
X-Large	338315	\$13.99	338307	\$14.28	312786	\$14.84
2X	338308	\$14.37	338300	\$14.78	312787	\$16.00
3X	338309	\$14.37	338301	\$14.78	312788	\$16.00
4X	338310	\$14.37	338302	\$14.78	312789	\$16.00
5X	338311	\$14.94	338303	\$15.90	312790	\$16.81
6X	340047	\$14.94	340044	\$15.90	340041	\$16.81
7X	340048	\$14.94	340045	\$15.90	340042	\$16.81
8X	340049	\$14.94	340046	\$15.90	340043	\$18.71

DENIM JEANS

These jeans are made of Blue denim and feature a half-elastic waist, button fly, and one rear pocket. These jeans are approved for Inmate Release Wear.

SIZE	MM #	PRICE
Small	312769	\$18.92
Medium	312770	\$19.87
Large	312771	\$20.78
X-Large	312772	\$21.72
2X	312773	\$22.66
3X	312774	\$23.92
4X	312775	\$24.17
5X	339967	\$24.41
6X	339968	\$25.17
7X	341930	\$26.09

POPLIN PATIENT PAJAMAS

This Cotton/Polyester, summer-weight Poplin pajama set features tops with long or short sleeves and elastic waist pants. Pajamas are available in Jade Green or Royal Blue with DOC on the back. Pajamas are approved for Inmate Wear.

JADE GREEN			JADE GREEN		ROYAL BLUE		ROYAL BLUE	
LONG SLEEVES			SHORT SLEEVES		LONG SLEEVES		SHORT SLEEVES	
SIZE	MM #	PRICE	MM #	PRICE	MM #	PRICE	MM #	PRICE
Small	312877	\$26.98	312884	\$25.45	312891	\$25.67	312898	\$27.08
Medium	312878	\$26.98	312885	\$25.45	312892	\$25.67	312899	\$27.08
Large	312879	\$26.98	312886	\$25.45	312893	\$25.67	312900	\$27.08
X-Large	312880	\$26.98	312887	\$25.45	312894	\$25.67	312901	\$27.08
2X	312881	\$30.16	312888	\$28.64	312895	\$26.96	312902	\$28.61
3X	312882	\$30.16	312889	\$28.64	312896	\$26.96	312903	\$28.61
4X	312883	\$30.16	312890	\$28.64	312897	\$26.96	312904	\$28.61

POPLIN V-NECK PATIENT GOWNS

This pullover, knee-length gown is made from Cotton/Polyester Poplin and features short sleeves and a V-neck. Available in Jade Green or Royal Blue, with DOC on the back. These gowns are approved for Inmate Wear.

JADE GREEN			ROYAL BLUE	
SIZE	MM #	PRICE	MM #	PRICE
Small	312704	\$17.94	312711	\$20.26
Medium	312705	\$17.94	312712	\$20.29
Large	312706	\$17.99	312713	\$20.34
X-Large	312707	\$18.14	312714	\$20.49
2X	312708	\$19.21	312715	\$21.58
3X	312709	\$19.29	312716	\$21.65
4X	312710	\$19.49	312717	\$21.86

POPLIN PAJAMA TOPS

These Cotton/Polyester Poplin pajama tops are available with either long or short sleeves. Available in Cocoa Brown only. Pajama tops are approved for Inmate Wear.

LONG SLEEVES			SHORT SLEEVES	
SIZE	MM #	PRICE	MM #	PRICE
Small	312954	\$10.30	312961	\$9.30
Medium	312955	\$10.30	312962	\$9.30
Large	312956	\$10.30	312963	\$9.30
X-Large	312957	\$10.30	312964	\$9.30
2X	312958	\$10.35	312965	\$10.35
3X	312959	\$10.35	312966	\$10.35
4X	312960	\$10.35	312967	\$10.35

POPLIN PAJAMA BOTTOMS

These Cotton/Polyester Poplin pajama bottoms are made with an elastic waist. Available in Cocoa Brown only. Pajama bottoms are approved for Inmate Wear.

SIZE	MM #	PRICE
Small	312947	\$10.20
Medium	312948	\$10.20
Large	312949	\$10.20
X-Large	312950	\$10.20
2X	312951	\$11.38
3X	312952	\$11.38
4X	312953	\$11.38

NYLON RAIN JACKETS AND RAINCOATS

The Nylon Rain Jacket is made of Yellow Nylon material with DOC on the back. This rain jacket is water repellent. The full-length raincoat is made of Yellow Nylon and is also water repellent with DOC printed on the back. Both items are approved for Inmate Wear.

RAIN JACKET			FULL-LENGTH RAINCOAT	
SIZE	MM #	PRICE	MM #	PRICE
Small	295713	\$57.39	295671	\$64.46
Medium	295714	\$57.39	295672	\$64.46
Large	295715	\$57.39	295673	\$64.46
X-Large	295716	\$57.39	295674	\$64.46
2X	295717	\$57.39	295675	\$64.46
3X	295718	\$57.39	295676	\$64.46
4X	295719	\$57.39	295677	\$64.46

TWILL KITCHEN SMOCK

This new Kitchen smock is made of White Twill with 3/4" sleeves and a wrap tie closure to allow for size adjusting and comfort. These are calf length and have DOC imprinted on the back. Smocks are approved for Inmate Wear.

SIZE	MM #	PRICE
Fits sizes S to X-Large	349478	\$16.79
Fits sizes 2X to 4X	349479	\$18.43

MALE BLUE CHAMBRAY WORK SHIRTS

The Male Blue Chambray work shirts are available with long or short sleeves. This style features a button down front and one pocket. Available for Inmate Wear, with DOC on the back, or for Inmate Release, without DOC on the back.

LONG SLEEVES					SHORT SLEEVES			
PLAIN			W/ DOC ON BACK		PLAIN		W/ DOC ON BACK	
SIZE	MM#	PRICE	MM #	PRICE	MM #	PRICE	MM #	PRICE
Small	314043	\$11.74	314057	\$13.10	314049	\$9.83	314063	\$10.47
Medium	314044	\$11.74	314058	\$13.10	314050	\$10.03	314064	\$10.67
Large	314045	\$11.74	314059	\$13.10	314051	\$10.22	314065	\$10.86
X-Large	314553	\$11.74	207843	\$13.10	314052	\$10.43	314066	\$11.05
2X	314556	\$12.41	208133	\$13.74	314053	\$10.81	314067	\$11.10
3X	314555	\$12.41	208132	\$13.74	314054	\$10.81	314068	\$11.56
4X	314554	\$12.41	208131	\$13.74	314055	\$10.81	314069	\$11.56
5X	314046	\$13.59	314060	\$14.24	314056	\$11.55	314070	\$12.20
6X	314047	\$13.92	314061	\$14.90	340028	\$12.75	340033	\$12.41
7X	314048	\$14.77	314062	\$15.42	340029	\$12.77	340034	\$12.53
8X	340023	\$15.15	338996	\$15.80	340030	\$13.00	340035	\$12.67
9X	340024	\$15.31	340026	\$15.96	340031	\$13.28	340036	\$12.83
10X	340025	\$15.49	340027	\$16.14	340032	\$13.75	340037	\$13.32

FEMALE BLUE CHAMBRAY WORK SHIRTS

The Female Blue Chambray work shirts are available with long or short sleeves. This style features a button down front and one pocket with a straight cut hem. Available for Inmate Wear, with DOC on the back.

LONG SLEEVES			SHORT SLEEVES	
W/ DOC ON BACK			W/ DOC ON BACK	
SIZE	MM #	PRICE	MM #	PRICE
Small	340063	\$22.38	340074	\$18.50
Medium	340064	\$22.38	340075	\$18.50
Large	340065	\$22.38	340076	\$18.50
X-Large	340066	\$22.38	340077	\$18.50
2X	340067	\$23.14	340078	\$19.12
3X	340068	\$23.14	340079	\$19.12
4X	340069	\$23.14	340080	\$19.12
5X	340070	\$25.02	340081	\$19.44
6X	340071	\$25.02	340082	\$19.44
7X	340072	\$25.02	340083	\$19.44
8X	340073	\$25.02	340084	\$19.44

POPLIN WORK SHIRTS

A Cotton/Polyester Poplin shirt with a button-down front and one pocket. Available with long or short sleeves in Cocoa Brown only, with DOC on the back. Approved for Inmate Wear. Available in both Male and Female sizes.



MALE				
LONG SLEEVES			SHORT SLEEVES	
SIZE	MM #	PRICE	MM #	PRICE
Small	314071	\$13.38	314078	\$11.38
Medium	314072	\$13.38	314079	\$11.63
Large	314073	\$13.38	314080	\$12.01
X-Large	200447	\$13.38	314081	\$12.14
2X	200458	\$14.30	314082	\$12.51
3X	200445	\$14.30	314083	\$12.64
4X	314074	\$14.30	314084	\$12.84
5X	314075	\$15.91	314085	\$13.78
6X	314076	\$16.37	314086	\$14.10
7X	314077	\$17.53	314087	\$14.32
8X	338998	\$18.02	340315	\$14.41
9X	338999	\$18.25	340316	\$14.83
10X	338997	\$18.49	340317	\$14.83

FEMALE				
LONG SLEEVES			SHORT SLEEVES	
SIZE	MM #	PRICE	MM #	PRICE
X-Small	314088	\$18.72	314097	\$15.04
Small	314089	\$18.72	314098	\$15.04
Medium	314090	\$18.72	314099	\$15.04
Large	314091	\$18.72	314100	\$15.04
X-Large	314092	\$18.72	314101	\$15.04
2X	314093	\$19.32	314102	\$15.84
3X	314094	\$19.32	314103	\$15.84
4X	314095	\$19.32	314104	\$15.84
5X	314096	\$21.87	314105	\$17.90
6X	340050	\$21.87	340053	\$17.90
7X	340051	\$21.87	340054	\$17.90
8X	340052	\$22.38	340055	\$18.09

WORK SHIRTS

TWILL WORK SHIRTS

These long or short sleeved Cotton/Polyester twill shirts feature a button front, one pocket and DOC on the back. Available in White, Cocoa Brown (General Population), Royal Blue (MHU*), and Gray (Outside Service Unit). *To include SRTU, SAU, SOU, POC and MHU inmates.

MALE - LONG SLEEVES								
WHITE			COCOA BROWN		ROYAL BLUE		GRAY	
SIZE	MM #	PRICE	MM #	PRICE	MM #	PRICE	MM #	PRICE
Small	314142	\$14.64	314106	\$18.28	314128	\$15.05	314125	\$13.64
Medium	314143	\$14.64	314107	\$18.28	314129	\$15.05	314126	\$13.64
Large	314144	\$14.64	314108	\$18.28	314130	\$15.05	237779	\$13.86
X-Large	314145	\$14.64	314109	\$18.28	314131	\$15.05	237778	\$14.19
2X	314146	\$15.83	314110	\$20.43	314132	\$16.09	237777	\$14.47
3X	314147	\$15.83	314111	\$20.43	314133	\$16.09	277756	\$14.64
4X	314148	\$15.83	314112	\$20.43	314134	\$16.09	237776	\$14.81
5X	314149	\$16.87	314113	\$24.19	339961	\$17.27	237775	\$16.42
6X	314150	\$16.22	314114	\$25.27	339962	\$17.27	340295	\$16.50
7X	314151	\$17.03	314115	\$27.95	339963	\$17.27	340296	\$16.70
8X	339007	\$17.62	339004	\$28.50	339964	\$17.27	340297	\$17.00
9X	339008	\$17.70	339005	\$29.00	339965	\$17.27	340298	\$17.50
10X	339006	\$17.78	339003	\$30.14	339966	\$17.27	340299	\$18.00

MALE - SHORT SLEEVES								
WHITE			COCOA BROWN		ROYAL BLUE		GRAY	
SIZE	MM#	PRICE	MAT'L#	PRICE	MM #	PRICE	MM #	PRICE
Small	314152	\$11.32	314116	\$15.28	314135	\$11.49	314127	\$12.07
Medium	314153	\$11.80	314117	\$15.28	314136	\$11.49	237574	\$14.13
Large	314154	\$11.86	314118	\$15.28	314137	\$11.49	237580	\$14.13
X-Large	314155	\$12.14	314119	\$15.28	314138	\$11.49	238863	\$14.13
2X	314156	\$12.44	314120	\$16.36	314139	\$12.79	237579	\$14.67
3X	314157	\$12.58	200439	\$16.36	314140	\$12.79	277757	\$14.90
4X	314158	\$12.72	314121	\$16.36	314141	\$12.79	317884	\$14.90
5X	314159	\$13.95	314122	\$20.65	339956	\$13.96	237782	\$14.90
6X	314160	\$14.56	314123	\$21.45	339957	\$13.96	340300	\$14.97
7X	314161	\$14.92	314124	\$22.26	339958	\$13.96	340301	\$15.37
8X	339010	\$15.23	339001	\$22.50	339959	\$13.96	340302	\$15.63
9X	339011	\$15.59	339002	\$23.00	339960	\$13.96	340303	\$15.90
10X	339009	\$16.18	339000	\$24.99	340105	\$13.96	340304	\$16.70

FEMALE - LONG SLEEVES		
WHITE		
SIZE	MM #	PRICE
Small	338868	\$16.06
Medium	338867	\$16.06
Large	338866	\$16.06
X-Large	338869	\$16.06
2X	338862	\$17.12
3X	338863	\$17.12

SIZE	MM #	PRICE
4X	338864	\$17.12
5X	338865	\$17.67
6X	340056	\$18.41
7X	340057	\$19.14
8X	340058	\$23.96



MEN'S LEATHER HIGH-TOP WORK BOOTS

Men's boots are handcrafted from genuine leather to provide comfort and extended wear. These high-top work boots are double-stitched with a round toe. Available in Brown only and approved for inmate wear.

SIZE	E WIDTH		EEE WIDTH	
	MM #	PRICE	MM #	PRICE
6	312379	\$48.43	291294	\$48.91
7	312381	\$48.43	312396	\$48.91
7½	312382	\$48.43	312397	\$48.91
8	312383	\$48.43	312398	\$48.91
8½	312384	\$48.43	312399	\$48.91
9	312385	\$48.43	312400	\$48.91
9½	312386	\$48.43	312401	\$48.91
10	312387	\$48.43	312402	\$48.91
10½	312388	\$48.43	312403	\$48.91
11	312389	\$48.43	312404	\$48.91
11½	312390	\$48.43	312405	\$48.91
12	312391	\$48.43	312406	\$48.91
13	312392	\$48.43	312407	\$48.91
14	312393	\$48.43	312408	\$48.91
15	312394	\$48.43	312409	\$48.91



WOMEN'S OXFORD SHOES

Women's oxford style shoes are handcrafted from smooth leather with a half-inch padded collar. Available in Medium Brown only, these shoes are approved for Inmate Wear.

SIZE	E WIDTH		EEE WIDTH	
	MM #	PRICE	MM #	PRICE
6	320098	\$44.11	320108	\$44.45
7	320099	\$44.11	320109	\$44.45
8	320100	\$44.11	320110	\$44.45
9	320101	\$44.11	320111	\$44.45
10	320102	\$44.11	320112	\$44.45
11	320103	\$44.11	320113	\$44.45
12	320104	\$44.11	320114	\$44.45
13	320105	\$44.11	320115	\$44.45
14	320106	\$44.11	320116	\$44.45
15	320107	\$44.11	320117	\$44.45

SHOES & SOCKS



SHOE LACES

Brown shoe laces are the standard 46-inch length for PCI shoes and boots. Sold as a pair.

MM #	PRICE
312855	\$0.11

CUSHIONED SOLE INSERTS

Replacement cushion sole inserts, sold by the dozen only.

SIZE	MM #	PRICE
6	314418	\$16.74
7	314419	\$16.74
8	314420	\$16.74
9	314421	\$16.74
10	314422	\$16.74
11	314423	\$16.74
12	314424	\$16.74
13	314425	\$16.74
14	314426	\$16.74
15	314427	\$16.74



TERRY SOCKS

These mid-length socks are a 50/50 blend of cotton and polyester and feature a cushioned sole. Available for men in White or Natural color and in natural only for women.

WHITE		NATURAL		
MALE				
SIZE	MM #	PRICE	MM #	PRICE
9-13	314435	\$.63	314433	\$.53
14-18	314436	\$.66	314434	\$.56
FEMALE				
5-8	--	--	314432	\$0.46

TUBE SOCKS

These mid-length socks are a 50/50 blend of cotton and polyester and are One Size Fits All. Available in White only.

MM #	PRICE
314437	\$.86

ANKLET TUBE SOCKS

These ankle-length socks are a 50/50 blend of cotton and polyester and are One Size Fits All. Available in White only.

MM #	PRICE
326718	\$.83

FLEECE SWEATSHIRT

This knit fleece, crewneck sweatshirt features long sleeves with rib knit waist and cuffs. Available in Cocoa Brown only, this sweatshirt is approved for Inmate Wear.



SIZE	MM #	PRICE
Small	328389	\$17.03
Medium	328390	\$17.19
Large	328391	\$17.56
X-Large	328392	\$17.82
2X	328393	\$18.11
3X	328394	\$18.89
4X	328395	\$20.22
5X	314202	\$22.45
6X	314203	\$24.43
7X	341939	\$25.05
8X	341940	\$25.80
9X	341941	\$26.65
10X	341942	\$27.72

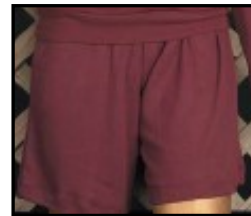
DOC FLEECE SWEATSHIRT

This knit fleece sweat shirt features long sleeves, a crewneck and rib knit waist and cuffs, with DOC on the back. Available in Red only.

SIZE	MM #	PRICE
Small	314212	\$17.83
Medium	314213	\$17.83
Large	314214	\$18.39
X-Large	314215	\$18.67
2X	314216	\$18.98
3X	314217	\$20.17
4X	314218	\$20.47
5X	314219	\$21.03

FLEECE SWEAT SHORTS

These knit fleece sweat shorts feature a full-elastic waist and are available in Cocoa Brown only. Approved for Inmate Wear.



FLEECE SWEAT PANTS

These Cocoa Brown, knit fleece sweatpants have a full elastic waist, 2 pockets and elastic at the ankle. Approved for Inmate Wear.

SIZE	MM #	PRICE
X-Small	361631	\$19.67
Small	328382	\$20.71
Medium	328383	\$21.25
Large	328384	\$21.43
X-Large	328385	\$22.06
2X	328386	\$23.12
3X	328387	\$23.54
4X	328388	\$24.24
5X	314185	\$24.82
6X	314186	\$25.37
7X	314187	\$26.13
8X	341936	\$27.14
9X	341937	\$28.62
10X	341938	\$29.45

SIZE	MM #	PRICE
Small	314227	\$16.54
Medium	314228	\$17.36
Large	314229	\$18.20
X-Large	314230	\$18.75
2X	314231	\$19.83
3X	314232	\$20.76
4X	314233	\$21.06
5X	314234	\$21.34
6X	314235	\$22.18
7X	314236	\$22.18
8X	339974	\$22.18

DOC T-SHIRT

RED DOC T-SHIRTS

This Red, Cotton/Polyester blend jersey knit, crewneck t-shirt has no pockets and is silk-screened with DOC on the back. Red DOC t-shirts are approved for Inmate Wear.



SIZE	MM #	PRICE
Small	314317	\$9.45
Medium	314318	\$9.45
Large	314319	\$9.45
X-Large	314320	\$9.45
2X	314321	\$10.78
3X	314322	\$10.78
4X	314323	\$10.78
5X	314324	\$10.78
6X	340198	\$11.40
7X	340199	\$11.40
8X	340200	\$13.92

UNISEX UNDERSHIRTS

This T-shirt style undershirt is made of a medium weight, Cocoa Brown, 50/50 Cotton/Polyester jersey knit material.

Approved for male and female Inmate Wear.

NOT AVAILABLE WITH DOC ON BACK PER POLICY



SIZE	MM #	PRICE
Small	314325	\$6.86
Medium	314326	\$6.86
Large	314327	\$6.86
X-Large	314328	\$6.86
2X	314329	\$7.31
3X	314330	\$7.36
4X	314331	\$7.51
5X	314332	\$8.84
6X	314624	\$8.84
7X	348528	\$8.84
8X	348529	\$9.10
9X	348530	\$9.17
10X	348531	\$9.57

WOMEN'S PANTIES

Our 50/50 cotton/polyester blend Women's panties feature a reinforced crotch and are available in Jersey Knit material with an elastic waistband and regular or elastic leg openings. Available in White only.

JERSEY KNIT				
REGULAR LEG OPENINGS			ELASTIC LEG OPENINGS	
SIZE	MM #	PRICE	MM #	PRICE
Small	312968	\$2.49	312976	\$2.55
Medium	312969	\$2.49	312977	\$2.58
Large	312970	\$2.50	312978	\$2.61
X-Large	312971	\$2.52	312979	\$2.62
2X	312972	\$2.87	312980	\$2.93
3X	312973	\$2.87	312981	\$2.95
4X	312974	\$2.87	312982	\$2.95
5X	312975	\$3.36	312983	\$3.44
6X	338372	\$3.36	338377	\$3.44
7X	338373	\$3.36	338378	\$3.44
8X	338374	\$3.51	338379	\$3.60
9X	338375	\$3.51	338380	\$3.60
10X	338371	\$3.60	338376	\$3.60

MEN'S UNDERWEAR

Men's underwear is available in either Boxer or Jockey style and is made from a cotton/polyester blend featuring an elastic waistband and a fly-front opening. Men's underwear is available in White only.



MEN'S BOXER BRIEFS

Men's boxer briefs are available in a cotton/polyester blend, White Rib Knit material and feature short legs, a fly-front opening and an elastic waistband.



BOXER		JOCKEY		
SIZE	MM #	PRICE	MM #	PRICE
Small	314347	\$3.12	314357	\$2.17
Medium	314348	\$3.12	314358	\$2.17
Large	314349	\$3.12	314359	\$2.17
X-Large	314350	\$3.12	314360	\$2.17
2X	314351	\$3.43	314361	\$2.49
3X	314352	\$3.43	314362	\$2.49
4X	314353	\$3.43	314363	\$2.49
5X	314354	\$4.06	314364	\$2.83
6X	314355	\$4.14	314365	\$2.90
7X	314356	\$4.26	314366	\$2.90
8X	339072	\$4.29	338317	\$3.33
9X	339073	\$4.37	338318	\$3.33
10X	339071	\$4.41	338316	\$3.33

SIZE	MM #	PRICE
28/30	312413	\$3.18
32/34	312414	\$3.18
36/38	312415	\$3.18
40/42	312416	\$3.26
44/46	312417	\$3.53
48/50	312418	\$3.53
52/54	312419	\$3.53
56/58	312420	\$3.99
60/62	312421	\$3.99
64/66	312422	\$3.99
68/70	338193	\$4.41
72/74	338194	\$4.41
76/78	338195	\$4.41

MEN'S LONG JOHNS

These 50/50 cotton/polyester blend, winter-weight long johns feature elastic waistbands and a fly-front with long-sleeved, crew neck tops. Men's long johns are available in Natural color only.

LONG JOHN TOPS		
SIZE	MM #	PRICE
30/32	312866	\$7.10
34/36	312867	\$7.10
38/40	312868	\$7.10
42/44	312869	\$7.10
46/48	312870	\$8.47
50/52	312871	\$8.47
54/56	312872	\$8.89
58/60	312873	\$8.89
62/64	312874	\$9.34
66/68	312875	\$9.34
70/72	338366	\$9.34
74/76	338367	\$10.00
78/80	338368	\$10.00
82/84	338369	\$10.00



LONG JOHN BOTTOMS		
SIZE	MM #	PRICE
28/30	312856	\$6.37
32/34	312857	\$6.37
36/38	312858	\$6.37
40/42	312859	\$6.61
44/46	312860	\$6.87
48/50	312861	\$7.05
52/54	312862	\$7.24
56/58	312863	\$7.58
60/62	312864	\$7.58
64/66	312865	\$7.58
68/70	338363	\$7.80
72/74	338364	\$7.80
76/78	338365	\$7.80



INMATE BASEBALL CAPS

A solid Twill cap with five panels for winter, or a Nylon Mesh cap with five panels for summer. Both styles have adjustable snaps and one size fits all. Available in Cocoa Brown or Light Gray. Approved for Inmate Wear.

COLOR	MATERIAL	MM #	PRICE
Cocoa Brown	Solid Twill	202107	\$6.68
Cocoa Brown	Nylon Mesh	312423	\$6.98
Light Gray	Solid Twill	319794	\$6.76
Light Gray	Nylon Mesh	319793	\$6.95



SKI CAPS

This 100-percent acrylic, stretchable rib knit fabric ski cap is available in Cocoa Brown or Gray. Approved for Inmate Wear. One size fits all.

COLOR	MM #	PRICE
Cocoa Brown	200814	\$1.62
Gray	319795	\$1.16

SCARVES

Packed 12 per case, these 28" x 28" square rayon silk scarves are available in assorted colors and patterns.

MM #	PRICE
313037	\$106.80

HANDKERCHIEFS

These Cotton/Polyester blend, White broadcloth handkerchiefs are 14" x 14" and are packed in lots of one dozen.



MM #	PRICE
314416	\$5.89

SAFETY VESTS

Made of soft polyester mesh in fluorescent yellow-green. Includes 2" lime yellow reflective strips around the waist and over each shoulder. Velcro closures allow for an adjustable, secure fit. DOC is also imprinted on the back of the vest. Approved for Inmate Wear.

SIZE	MM #	PRICE
Large (Fits up to 63")	314367	\$29.07
X-Large (Fits up to 70")	314368	\$30.99
2X (Fits up to 76")	314369	\$32.81



TWILL WORK SHIRTS

This cotton/polyester twill shirt features a button front and one pocket and are available with short or long sleeves.

Approved for Mental Health Population. Available in Royal Blue only with DOC imprinted on the back.



SIZE	MM #	PRICE
Small	340021	\$15.13
Medium	340020	\$15.13
Large	340019	\$15.13
X-Large	340022	\$15.13
2X	340011	\$15.29
3X	340012	\$15.29
4X	340013	\$15.29
5X	340014	\$15.65
6X	340015	\$15.65
7X	340016	\$15.65
8X	340017	\$15.65
9X	340018	\$15.65
10X	340010	\$15.65

SIZE	MM #	PRICE
Small	312711	\$20.26
Medium	312712	\$20.29
Large	312713	\$20.34
X-Large	312714	\$20.49
2X	312715	\$21.58
3X	312716	\$21.65
4X	312717	\$21.86

SIZE	MM #	PRICE	MM#	PRICE
SHORT SLEEVES		LONG SLEEVES		
Small	314135	\$11.49	314128	\$15.05
Medium	314136	\$11.49	314129	\$15.05
Large	314137	\$11.49	314130	\$15.05
X-Large	314138	\$11.49	314131	\$15.05
2X	314139	\$12.79	314132	\$16.09
3X	314140	\$12.79	314133	\$16.09
4X	314141	\$12.79	314134	\$16.09
5X	339956	\$13.96	339961	\$17.27
6X	339957	\$13.96	339962	\$17.27
7X	339958	\$13.96	339963	\$17.27
8X	339959	\$13.96	339964	\$17.27
9X	339960	\$13.96	339965	\$17.27
10X	340105	\$13.96	339966	\$17.27

UNISEX HOBBY JEANS

Made of cotton/polyester twill, with a half-elastic waist.



PATIENT GOWNS

This pullover, knee-length gown is made from a cotton/polyester blend poplin fabric, featuring short sleeves and a V-neck.

Approved for Mental Health Population. Available in Royal Blue only with DOC imprinted on the back.



TWO-PIECE PAJAMAS

Cotton/polyester light-weight poplin pajamas with elastic waist pants are available with short or long sleeves.

Approved for Mental Health Population. Available in Royal Blue only with DOC imprinted on the back.



SIZE	MM #	PRICE	MM#	PRICE
SHORT SLEEVES		LONG SLEEVES		
Small	312898	\$27.08	312891	\$25.67
Medium	312899	\$27.08	312892	\$25.67
Large	312900	\$27.08	312893	\$25.67
X-Large	312901	\$27.08	312894	\$25.67
2X	312902	\$28.61	312895	\$26.96
3X	312903	\$28.61	312896	\$26.96
4X	312904	\$28.61	312897	\$26.96

This is a
BIG HOUSE
catalog